

# V&V Reference Report

## L2 ASCDS Version : 8.4.4

Observation 8555 - L2 Version 3  
Chandra X-Ray Center

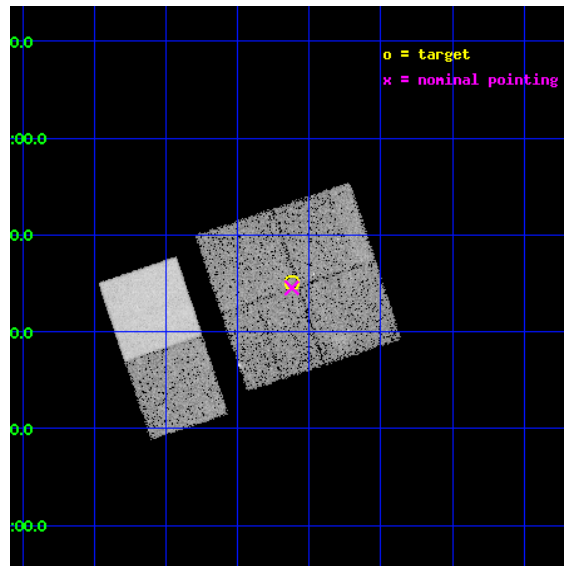
L2 Processing Date : Apr 24 2012

## Contents

<b>1</b>	<b>Front</b>	<b>2</b>
<b>2</b>	<b>OBI</b>	<b>3</b>
2.1	OBI . . . . .	3
2.1.1	Images . . . . .	3
2.1.2	Bias . . . . .	3
2.1.3	Parameters . . . . .	4
2.1.4	Events . . . . .	4
2.2	Compared Parameters . . . . .	5
2.3	Aspect . . . . .	6
2.4	Star Slots . . . . .	9
2.4.1	Slot 3 . . . . .	9
2.4.2	Slot 4 . . . . .	10
2.4.3	Slot 5 . . . . .	11
2.4.4	Slot 6 . . . . .	12
2.4.5	Slot 7 . . . . .	13
2.5	FID Slots . . . . .	14
2.5.1	Slot 0 . . . . .	14
2.5.2	Slot 1 . . . . .	15
2.5.3	Slot 2 . . . . .	16
<b>A</b>	<b>Summary</b>	<b>17</b>
A.1	Status . . . . .	17
A.2	Comments . . . . .	17

# 1 Front

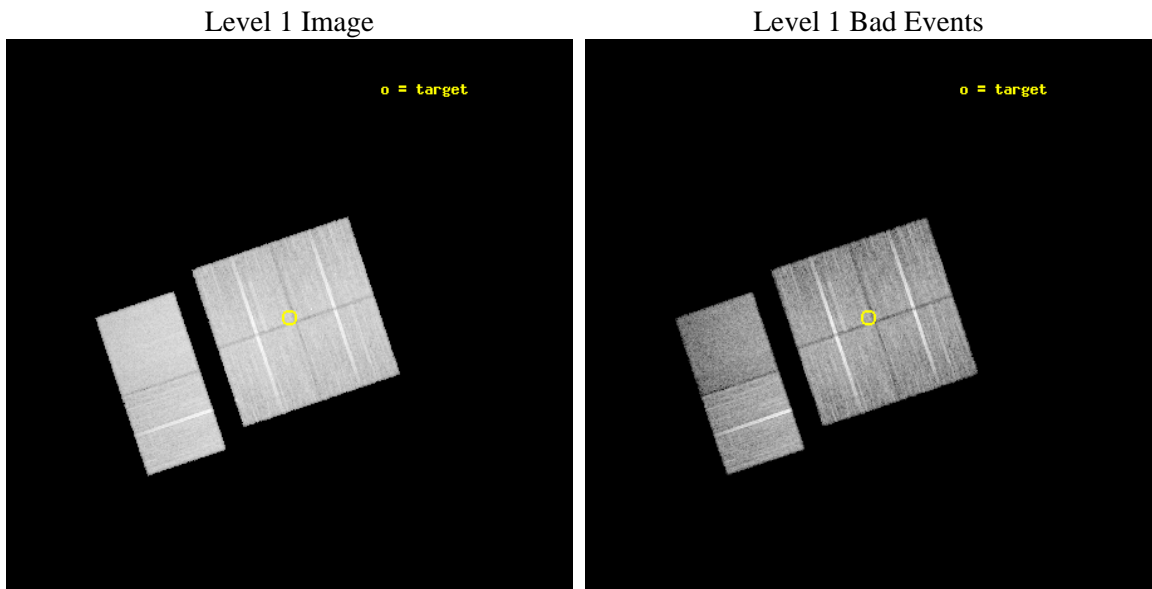
seq_num	900566	Sequence number
obs_id	8555	Observation id
title	THE CHANDRA-COSMOS SURVEY	Proposal title
observer	Dr. Martin Elvis	Principal investigator
object	C-COSMOS6-1	Source name
dtcycle	0	&#160
cycle	P	events from which exps? Prim/Second/Both
ra_targ	150.280433	Observer's specified target RA [deg]
dec_targ	1.750386	Observer's specified target Dec [deg]
ra_nom	150.28025745504	Nominal RA [deg]
dec_nom	1.7422996760781	Nominal Dec [deg]
roll_nom	251.40870311378	Nominal Roll [deg]
revision	3	Processing version of data
ontime	16805.399537086	Sum of GTIs [s]
livetime	16592.599449151	Livetime [s]
ontime0	16802.035446823	Sum of GTIs [s]
ontime1	16795.594536066	Sum of GTIs [s]
ontime2	16805.358497083	Sum of GTIs [s]
ontime3	16805.399537086	Sum of GTIs [s]
ontime6	16802.240606904	Sum of GTIs [s]
ontime7	16805.44057709	Sum of GTIs [s]
l2events	122412	Number of level 2 events



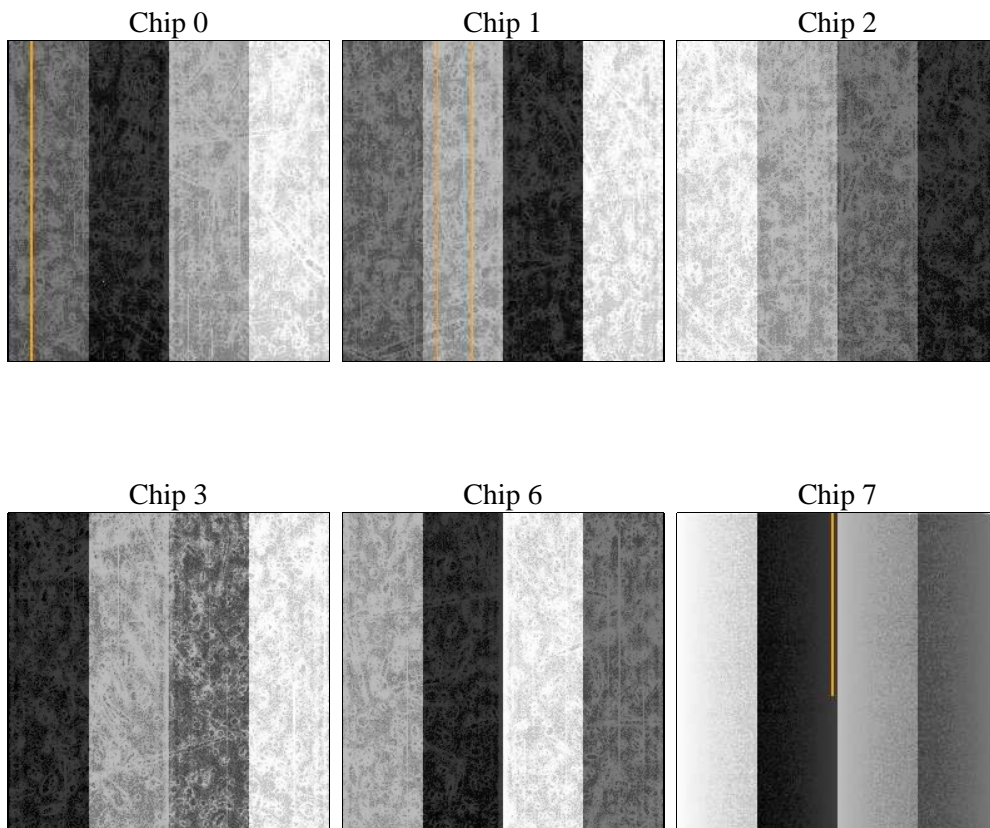
## 2 OBI

### 2.1 OBI

#### 2.1.1 Images



#### 2.1.2 Bias



### 2.1.3 Parameters

obi_num	0	Obi number	sched_exp_time	16762.756000	[s] Scheduled observation exposure time
ascdsver	8.4.4	Processing system revision	ontime	16805.399537086	Sum of GTIs [s]
caldbver	4.4.9	&#160	ontime0	16802.035446823	Sum of GTIs [s]
date	2012-04-24T21:20:10	Date and time of file creation	ontime1	16795.594536066	Sum of GTIs [s]
revision	3	Processing version of data	ontime2	16805.358497083	Sum of GTIs [s]
			ontime3	16805.399537086	Sum of GTIs [s]
			ontime6	16802.240606904	Sum of GTIs [s]
			ontime7	16805.44057709	Sum of GTIs [s]
			l1events	823508	Number of level 1 events

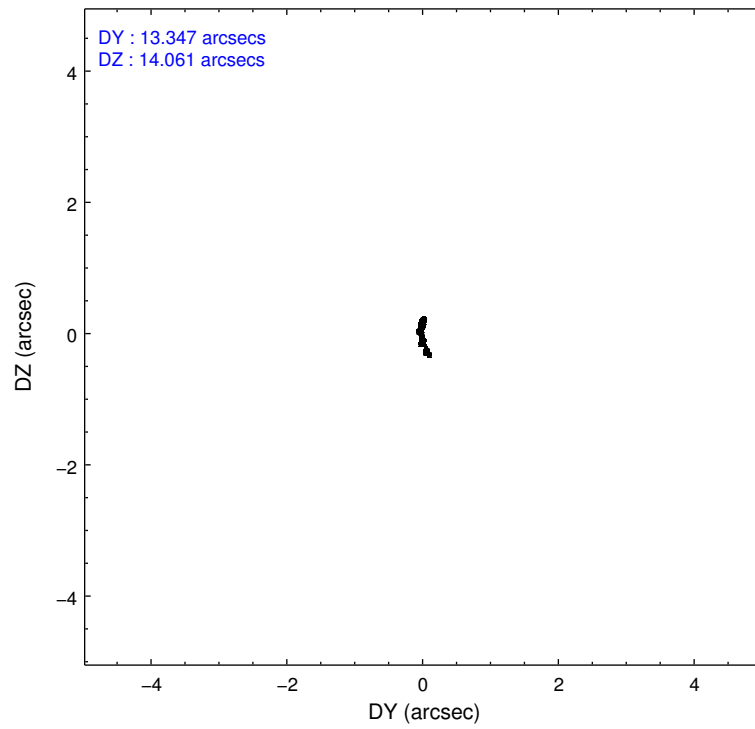
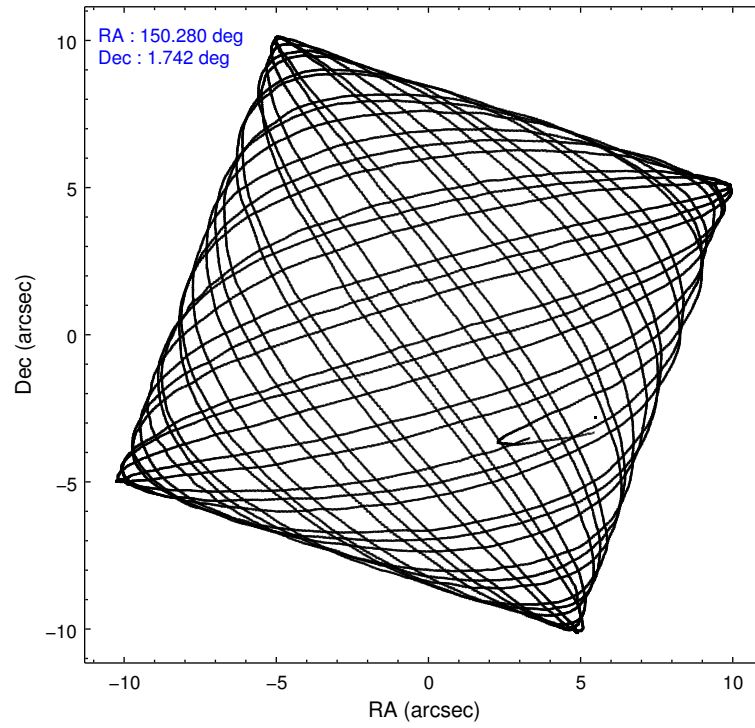
### 2.1.4 Events

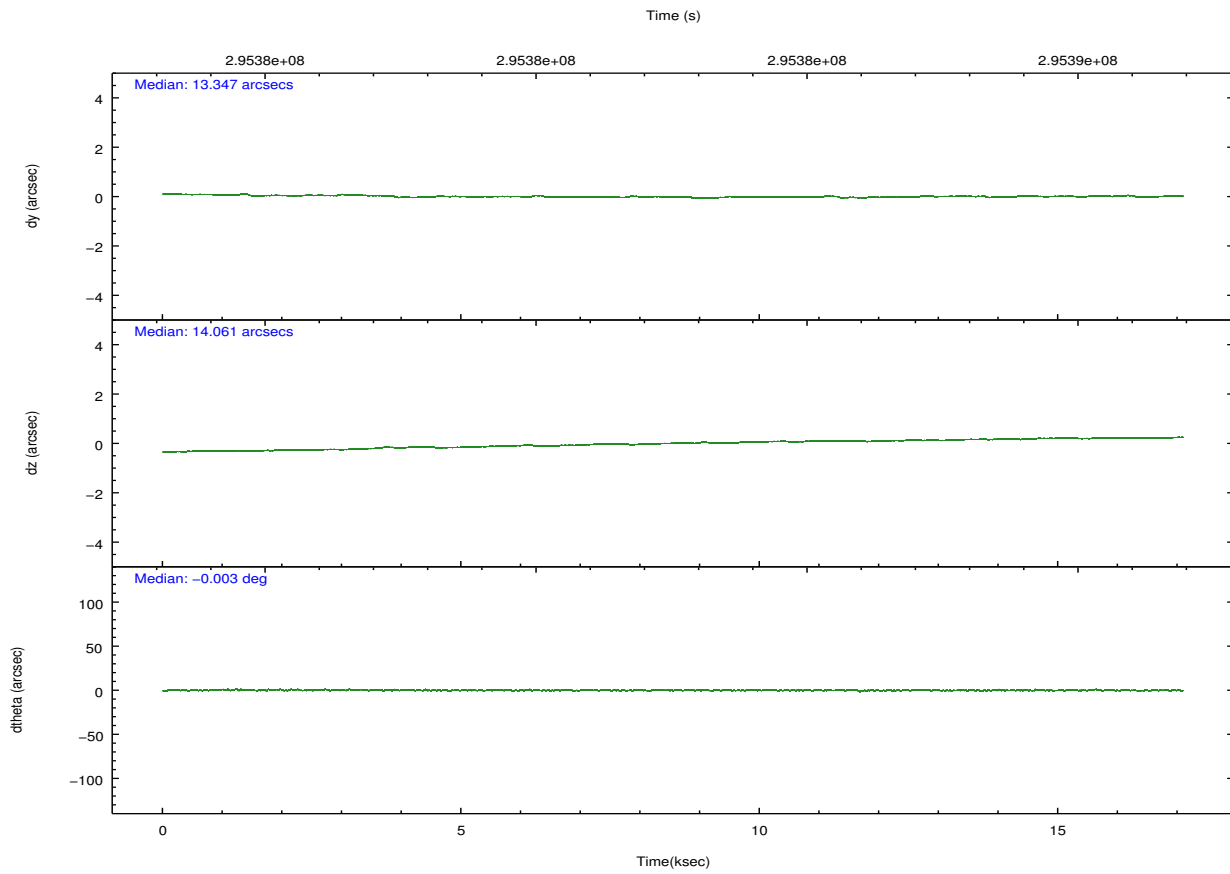
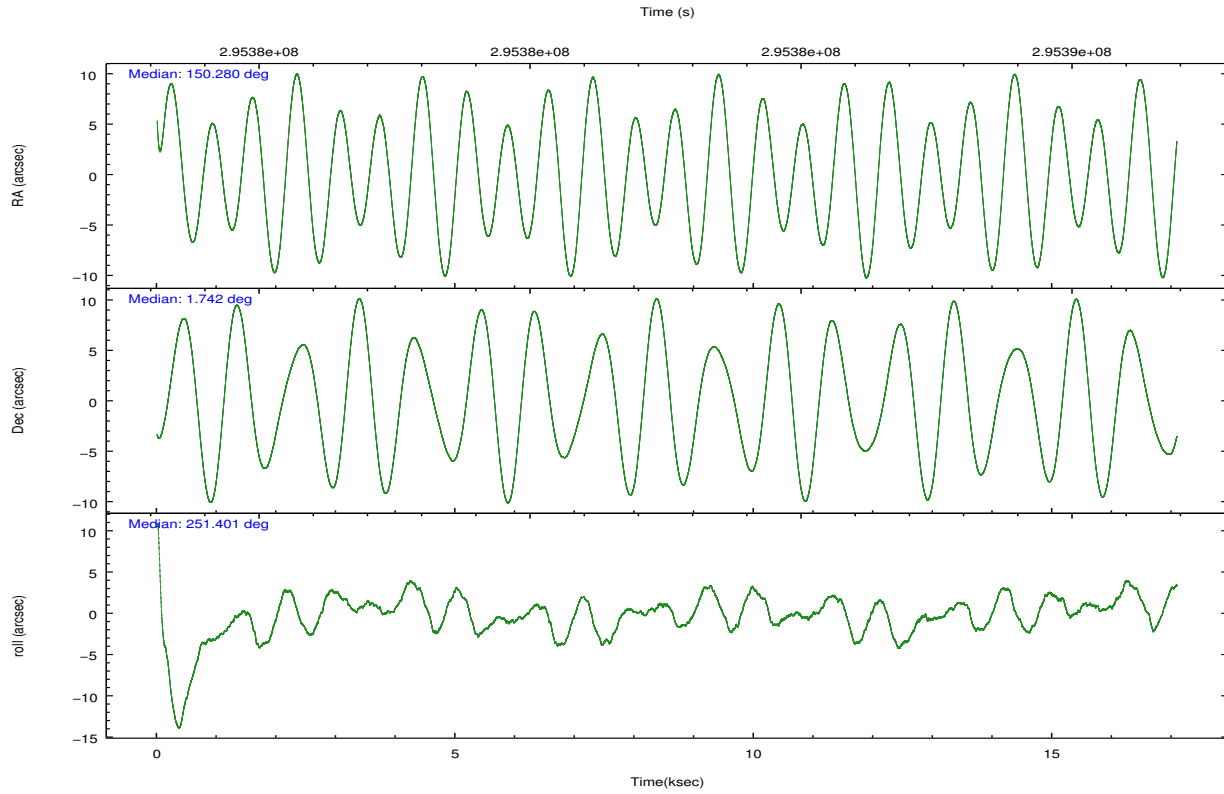
	ccd 0	ccd 1	ccd 2	ccd 3	ccd 6	ccd 7		ccd 0	ccd 1	ccd 2	ccd 3	ccd 6	ccd 7
level 1 events	129460	126447	143080	132712	142548	149261	grade 0 events	5072	5367	4798	4244	4763	6268
rejected events	115705	111572	129967	120501	128584	81217		3%	4%	3%	3%	3%	4%
rejected %	89%	88%	90%	90%	90%	54%	grade 1 events	69	68	65	74	69	198
								0%	0%	0%	0%	0%	0%
							grade 2 events	3235	3390	3059	2641	3150	13785
								2%	2%	2%	1%	2%	9%
							grade 3 events	1507	1628	1418	1431	1542	6377
								1%	1%	0%	1%	1%	4%
							grade 4 events	1382	1615	1436	1357	1448	6185
								1%	1%	1%	1%	1%	4%
							grade 5 events	4621	4982	4291	5307	5531	15555
								3%	3%	2%	3%	3%	10%
							grade 6 events	2565	2879	2407	2540	3068	35453
								1%	2%	1%	1%	2%	23%
							grade 7 events	111009	106518	125606	115118	122977	65440
								85%	84%	87%	86%	86%	43%

## 2.2 Compared Parameters

Parameter	Planned	Actual	Parameter	Planned	Actual
Instrument	ACIS	ACIS	Obspar format version number	7	7
Detector	ACIS-012367	ACIS-012367	Obspar file type	PREDICTED	ACTUAL
Grating	NONE	NONE	Obspar update status	NONE	UPDATED
Data mode	VFAINT	VFAINT	CCD I0 on	Y	Y
Observation mode	POINTING	POINTING	CCD I1 on	Y	Y
[deg] Pointing RA	150.274702	150.2802574550359	CCD I2 on	Y	Y
[deg] Pointing Dec	1.769243	1.742299676078053	CCD I3 on	Y	Y
[deg] Pointing Roll	251.200183	251.4087031137847	CCD S0 on	N	N
[mm] SIM focus pos	-0.782348	-0.7809083437167272	CCD S1 on	N	N
[mm] SIM defocus	0	0.001439871863259334	CCD S2 on	O1	Y
[mm] SIM translation stage pos	-233.592463	-233.5874344608287	CCD S3 on	O2	Y
[mm] SIM translation stage offset	0	-0.005018542100998502	CCD S4 on	N	N
[s] Observation start time (MET)	295374321.184000	295373238.03357	CCD S5 on	N	N
Observation start date	2007-05-12T16:24:16	2007-05-12T16:07:18	Number of optional ACIS chips dropped	0	0
[s] Observation end time (MET)	295391083.184000	295391318.00943	On-chip summing requested	N	N
Observation end date	2007-05-12T21:03:38	2007-05-12T21:08:38	Subarray requested	NONE	NONE
Read mode	TIMED	TIMED	Alternating exposures requested	N	N
			[s] Primary exposure time	0.000000	3.2

## 2.3 Aspect



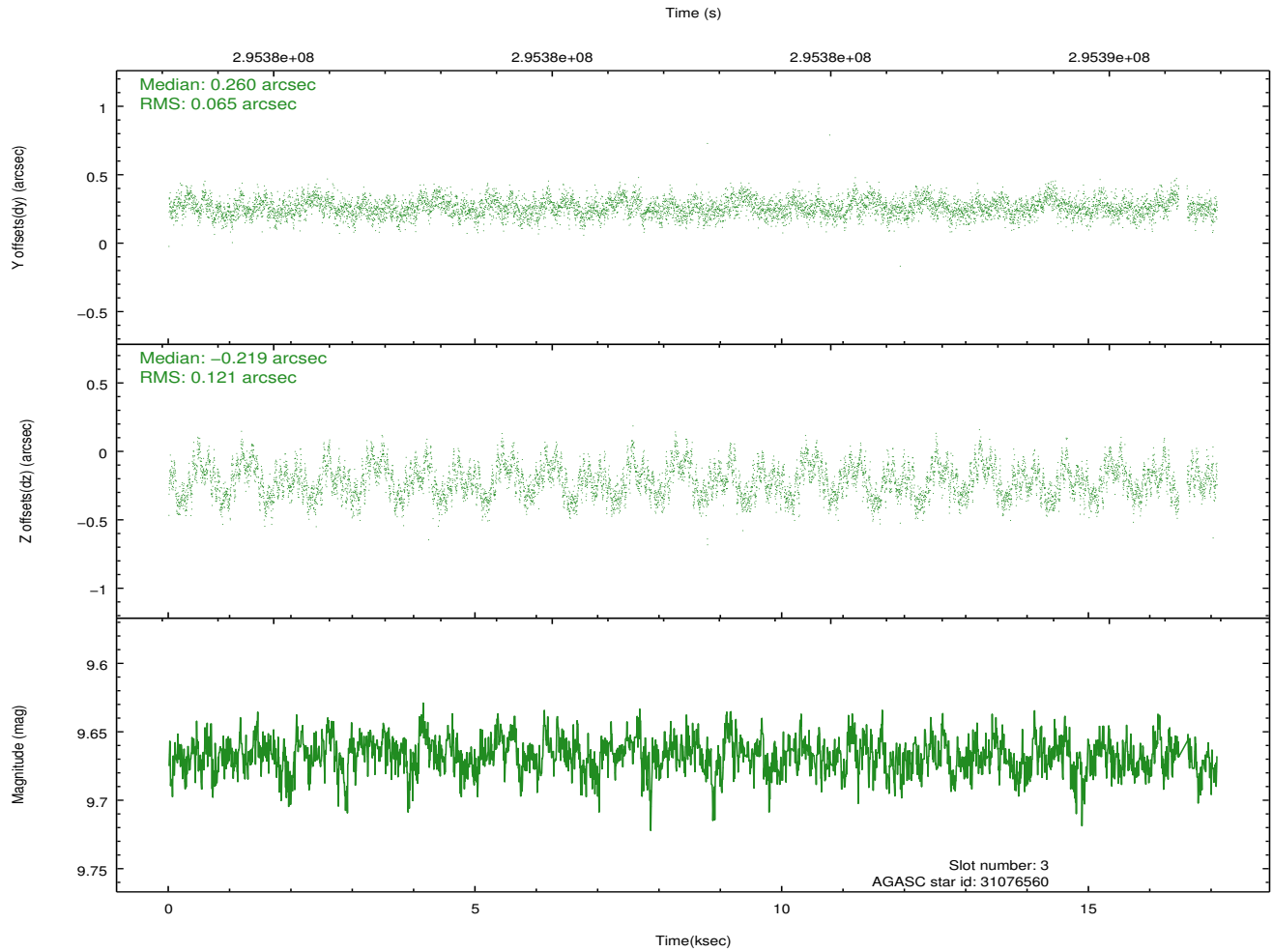
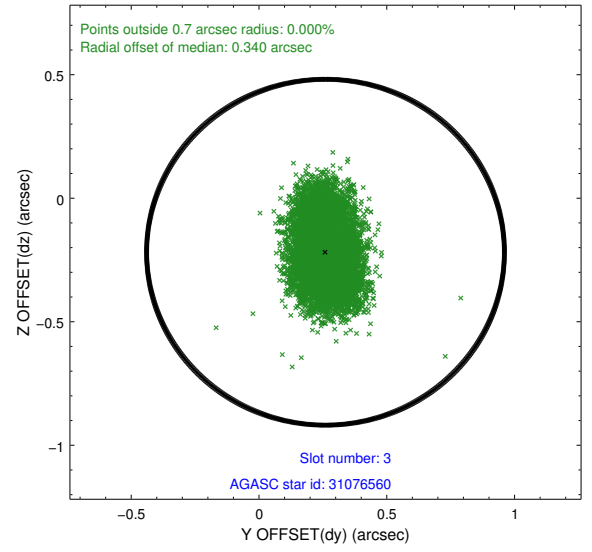
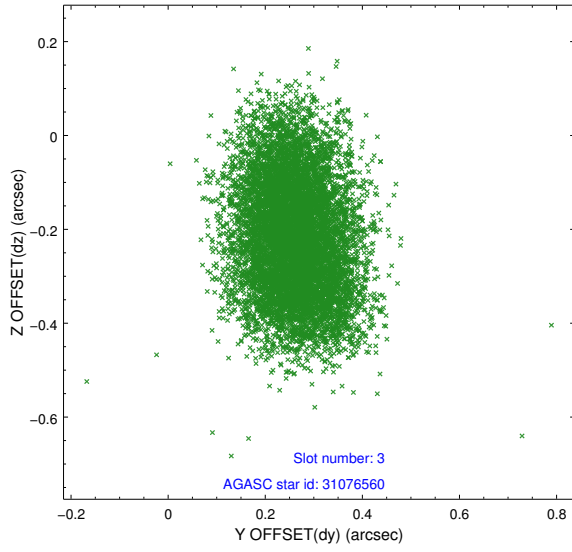


### Slot Statistics

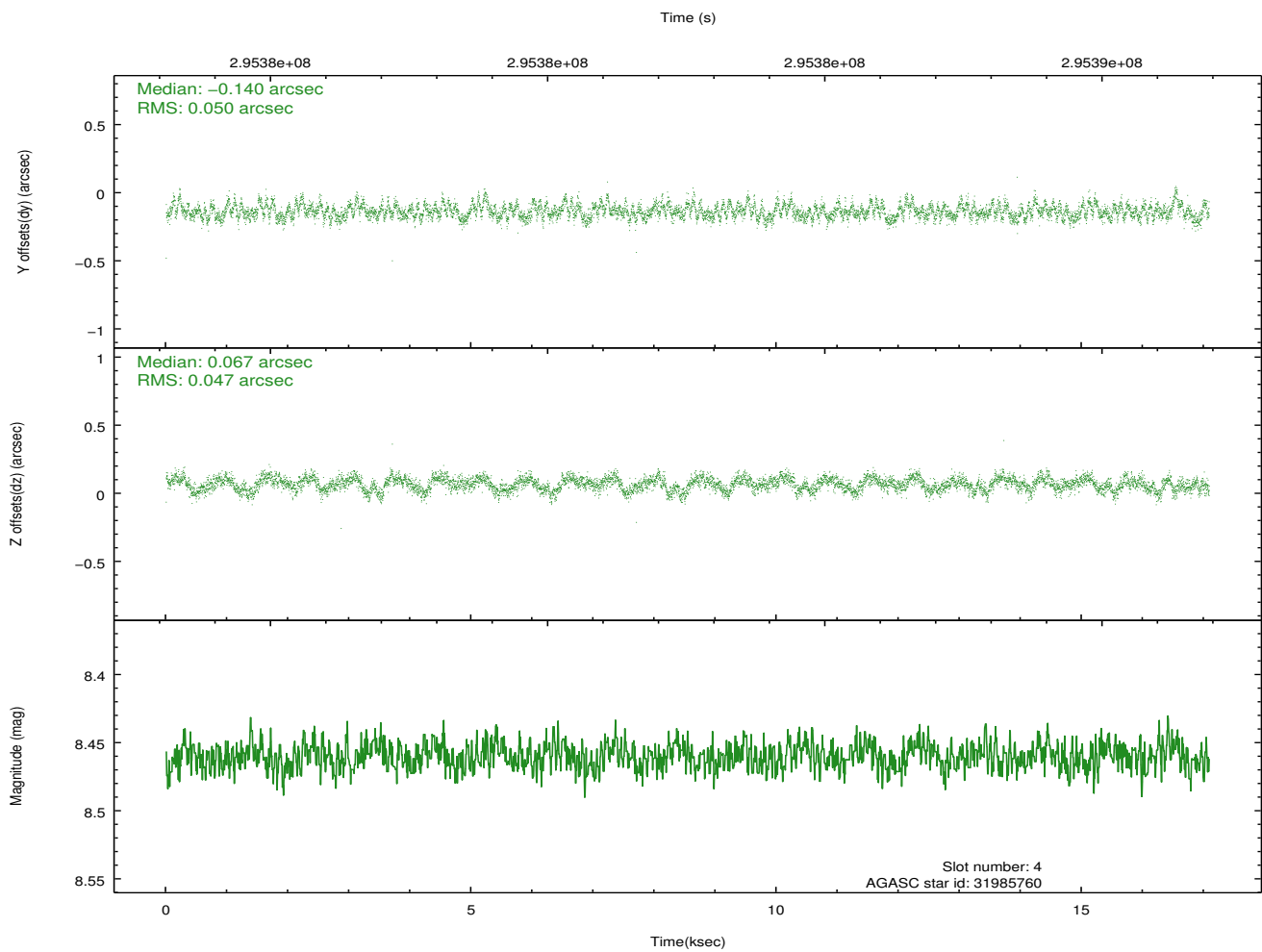
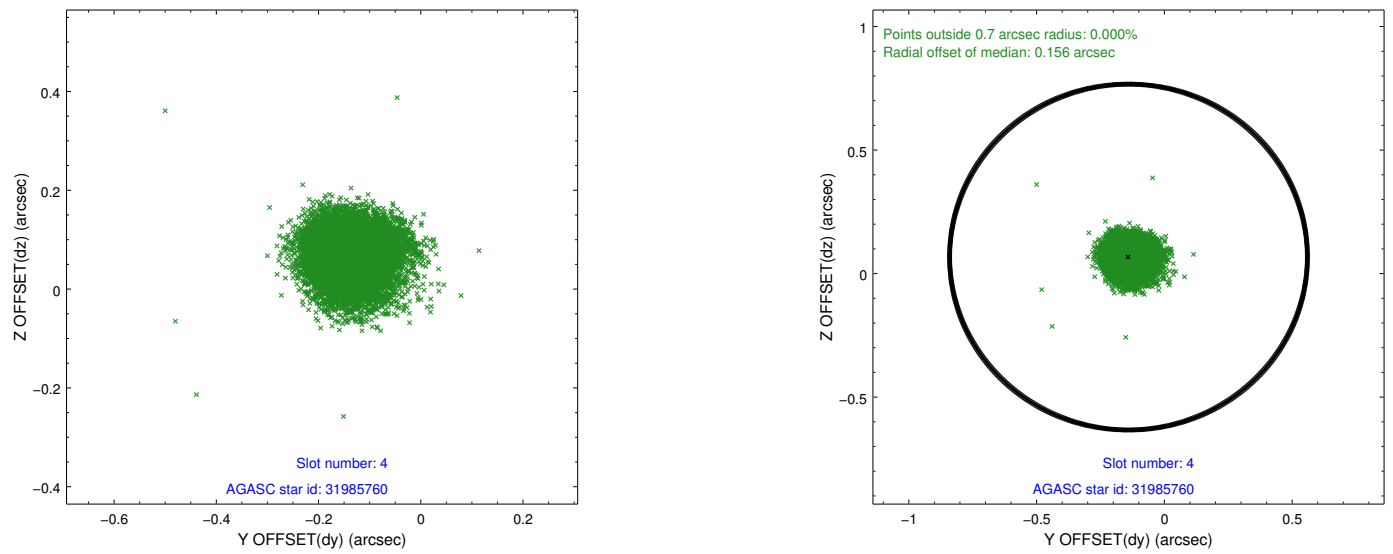
slot	status	id	mag	n_pts	med_dy	med_dz	dr1	dr2	ra	dec	mean_y	mean_z
0	FID	ACIS-I-1	7.23	4168	0.040	-0.001	0.007	0.012	0.000000	0.000000	926.20	-837.60
1	FID	ACIS-I-5	7.22	4168	-0.226	0.042	0.007	0.011	0.000000	0.000000	-1822.06	1059.78
2	FID	ACIS-I-6	7.24	4168	0.095	0.030	0.008	0.014	0.000000	0.000000	391.51	1704.57
3	GUIDE	31076560	9.67	8251	0.260	-0.219	0.146	0.239	149.884782	2.009277	-365.41	-1606.22
4	GUIDE	31985760	8.46	8334	-0.140	0.067	0.073	0.114	150.924581	2.094394	-1862.21	1835.81
5	GUIDE	31986152	9.00	8332	-0.025	0.142	0.080	0.129	150.840314	2.057585	-1639.06	1591.89
6	GUIDE	31989744	8.94	8329	0.216	-0.036	0.075	0.123	150.416962	1.131114	2009.61	1225.78
7	GUIDE	31983336	8.59	8334	-0.310	0.043	0.065	0.107	150.429924	2.291234	-1958.94	-76.79

## 2.4 Star Slots

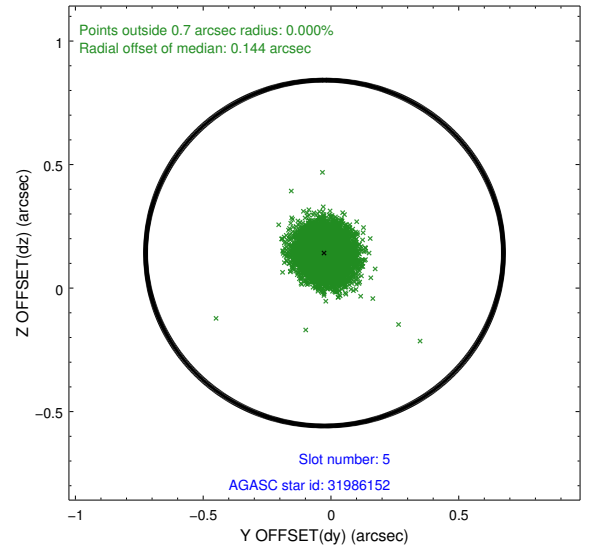
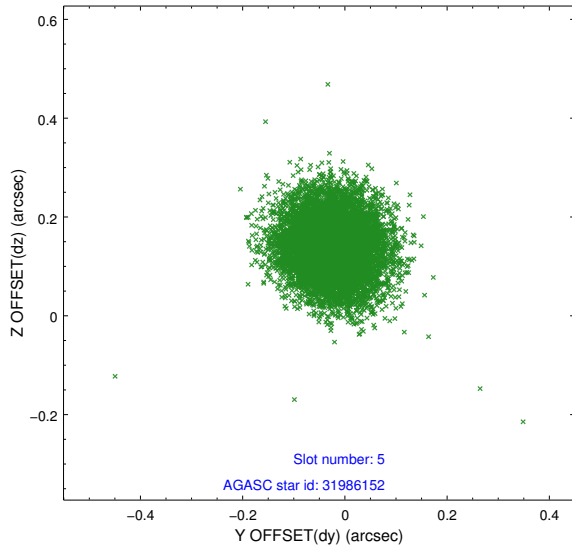
### 2.4.1 Slot 3



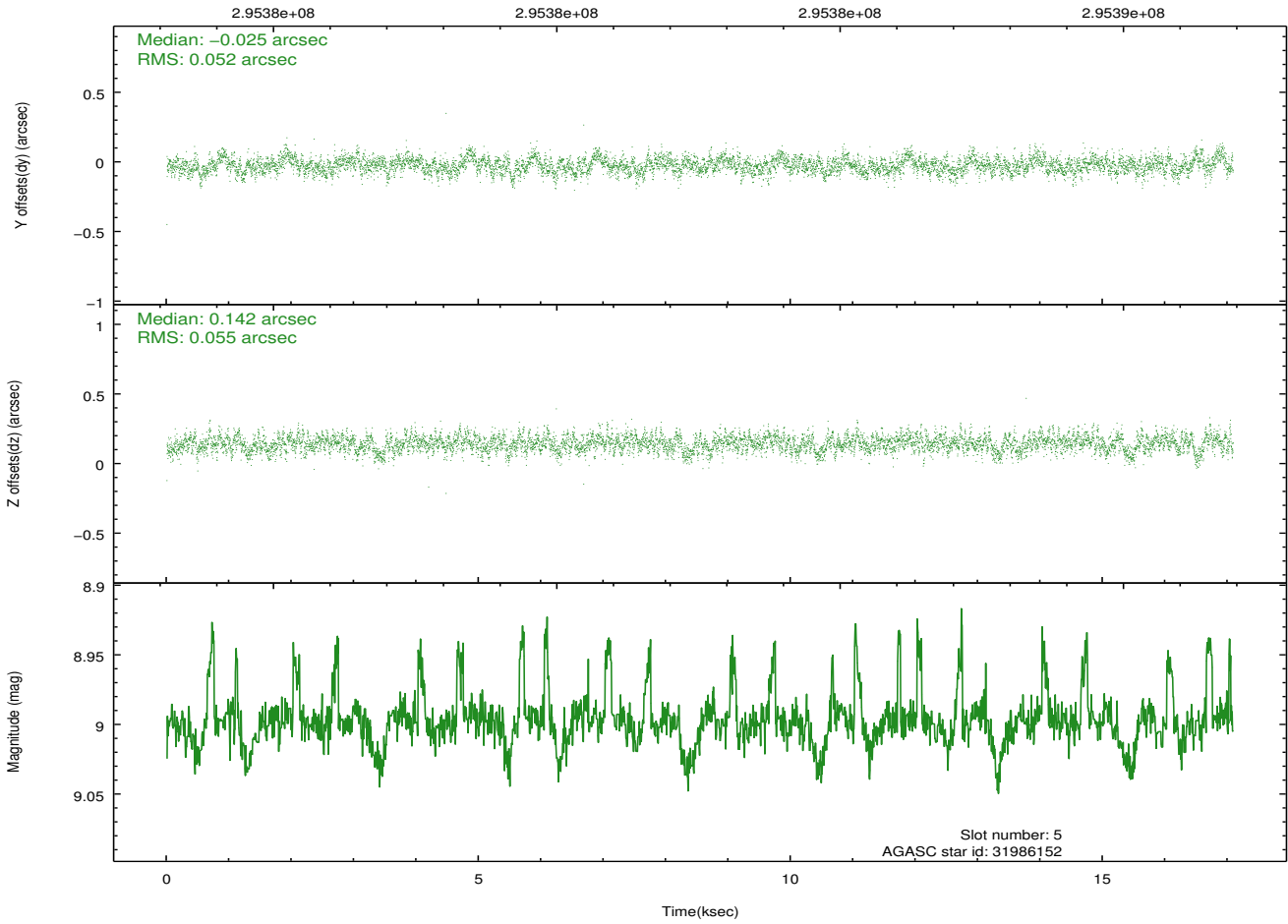
## 2.4.2 Slot 4



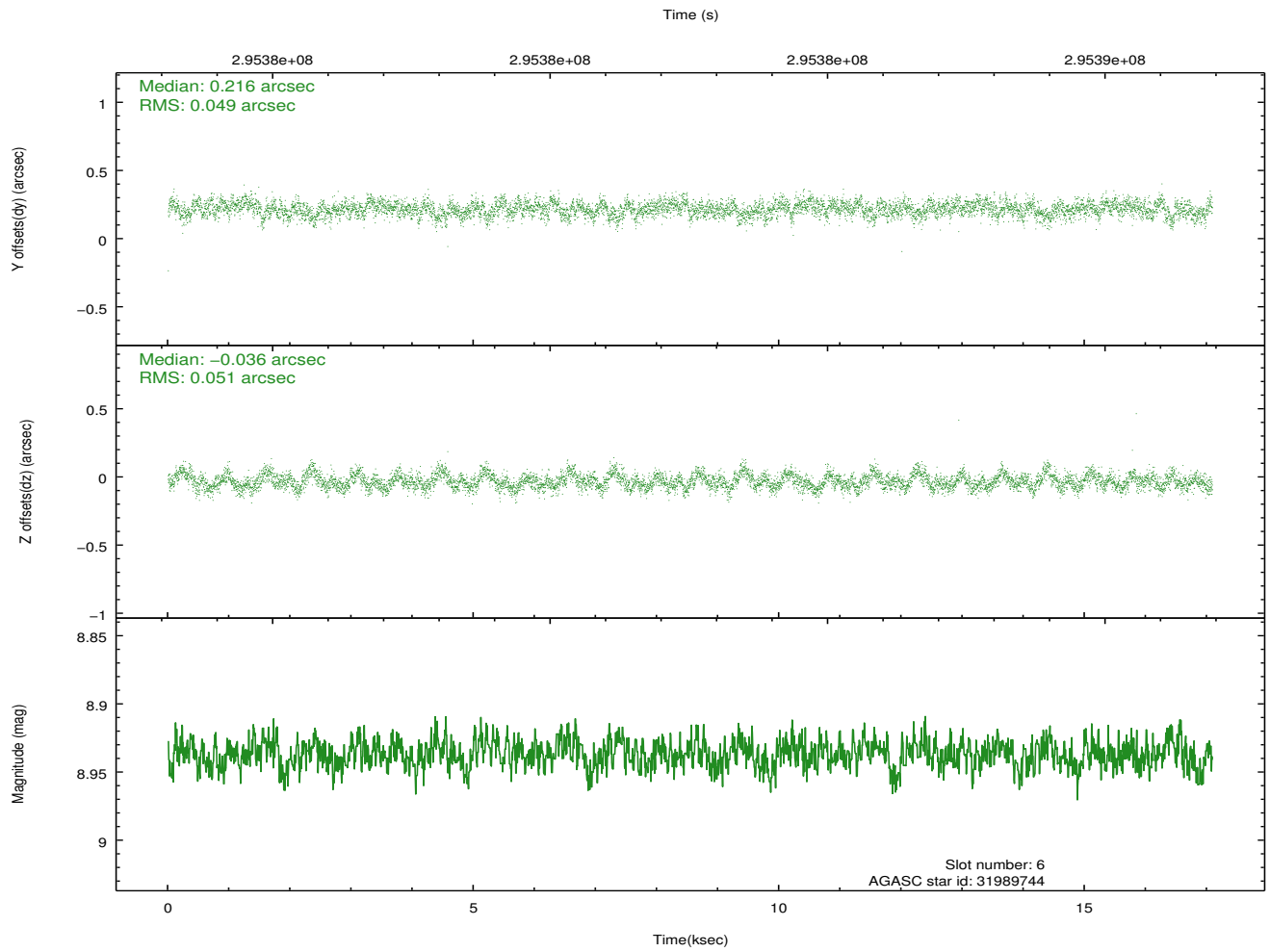
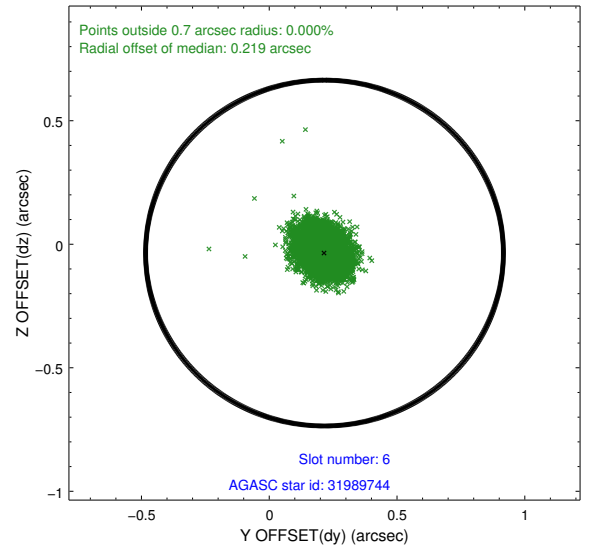
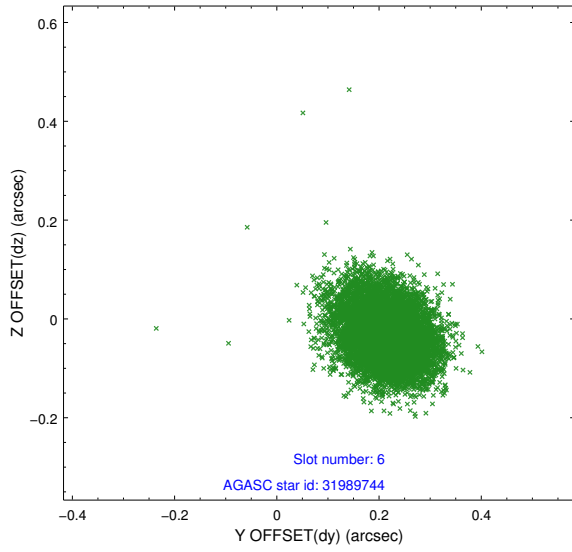
### 2.4.3 Slot 5



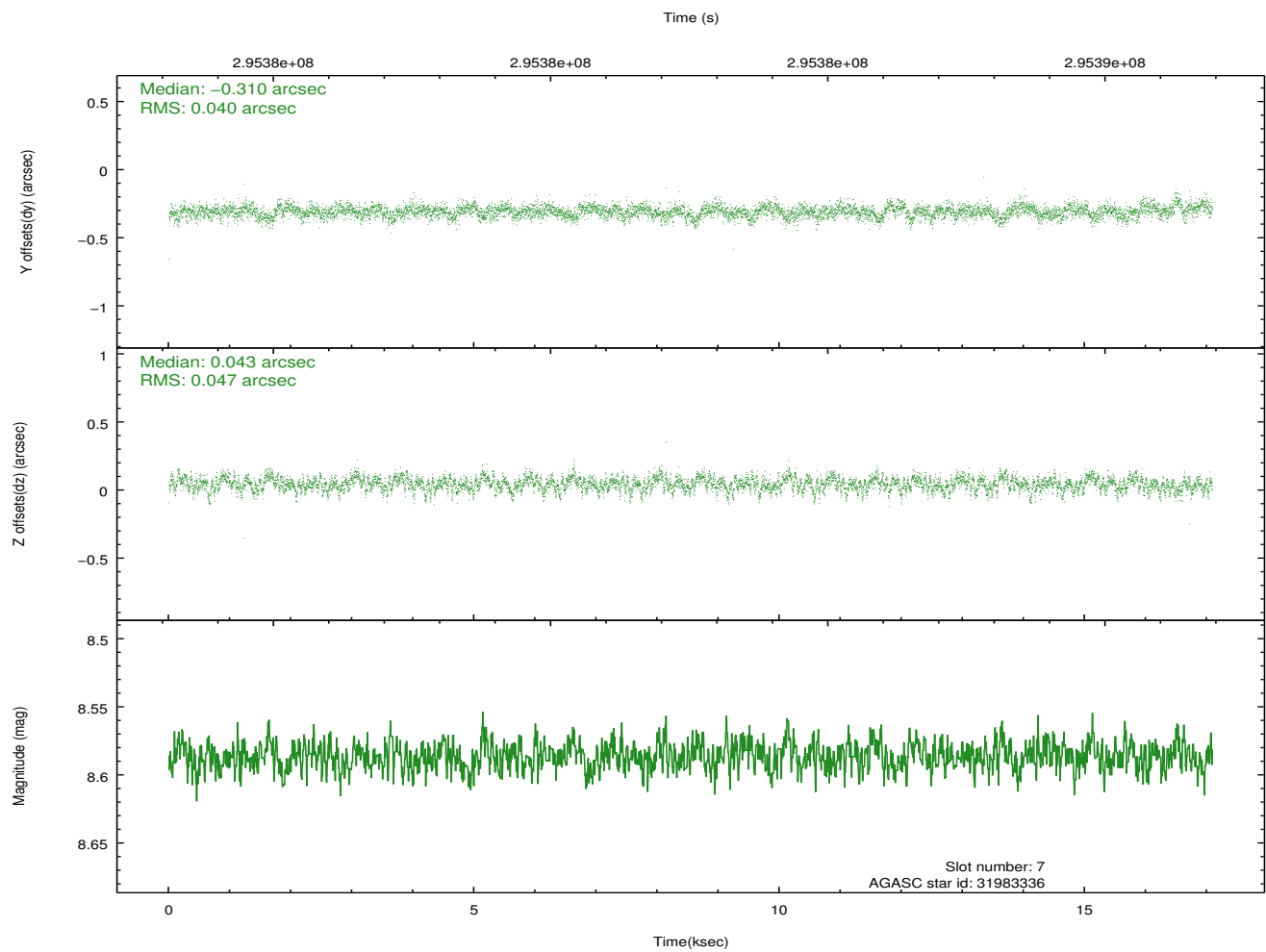
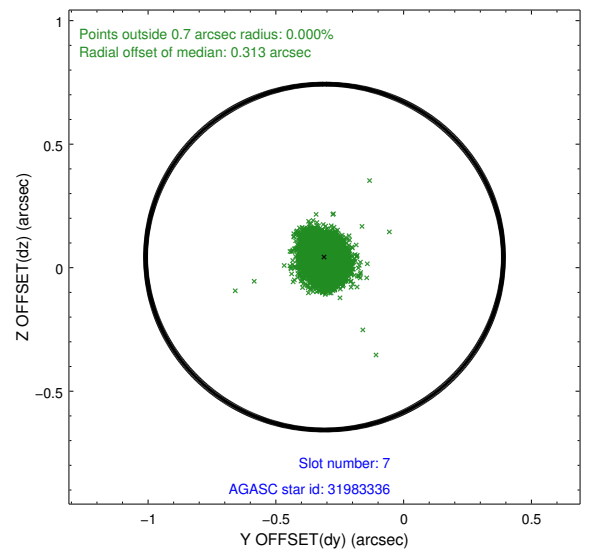
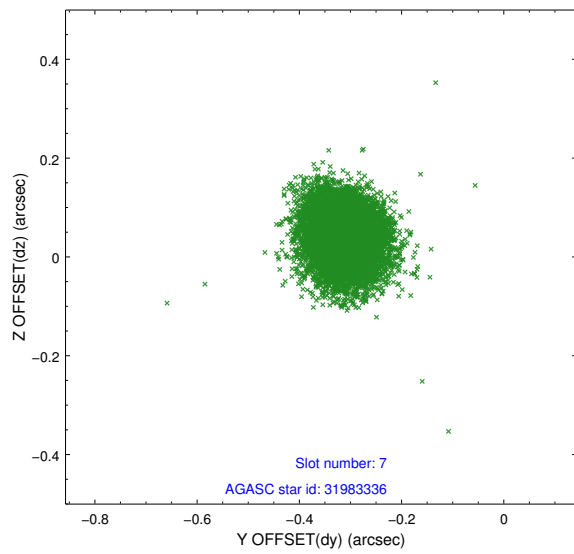
Time (s)



## 2.4.4 Slot 6

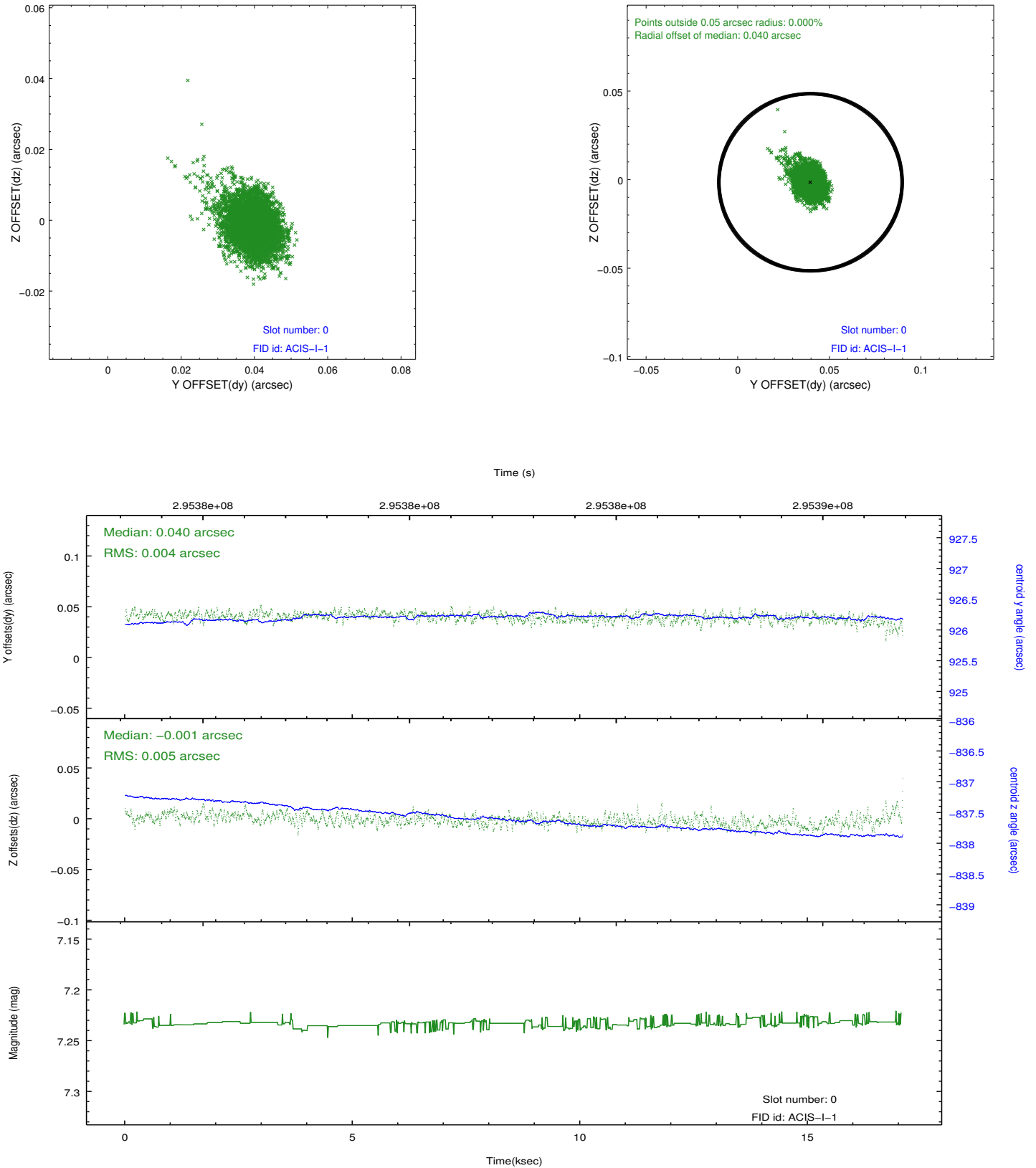


## 2.4.5 Slot 7

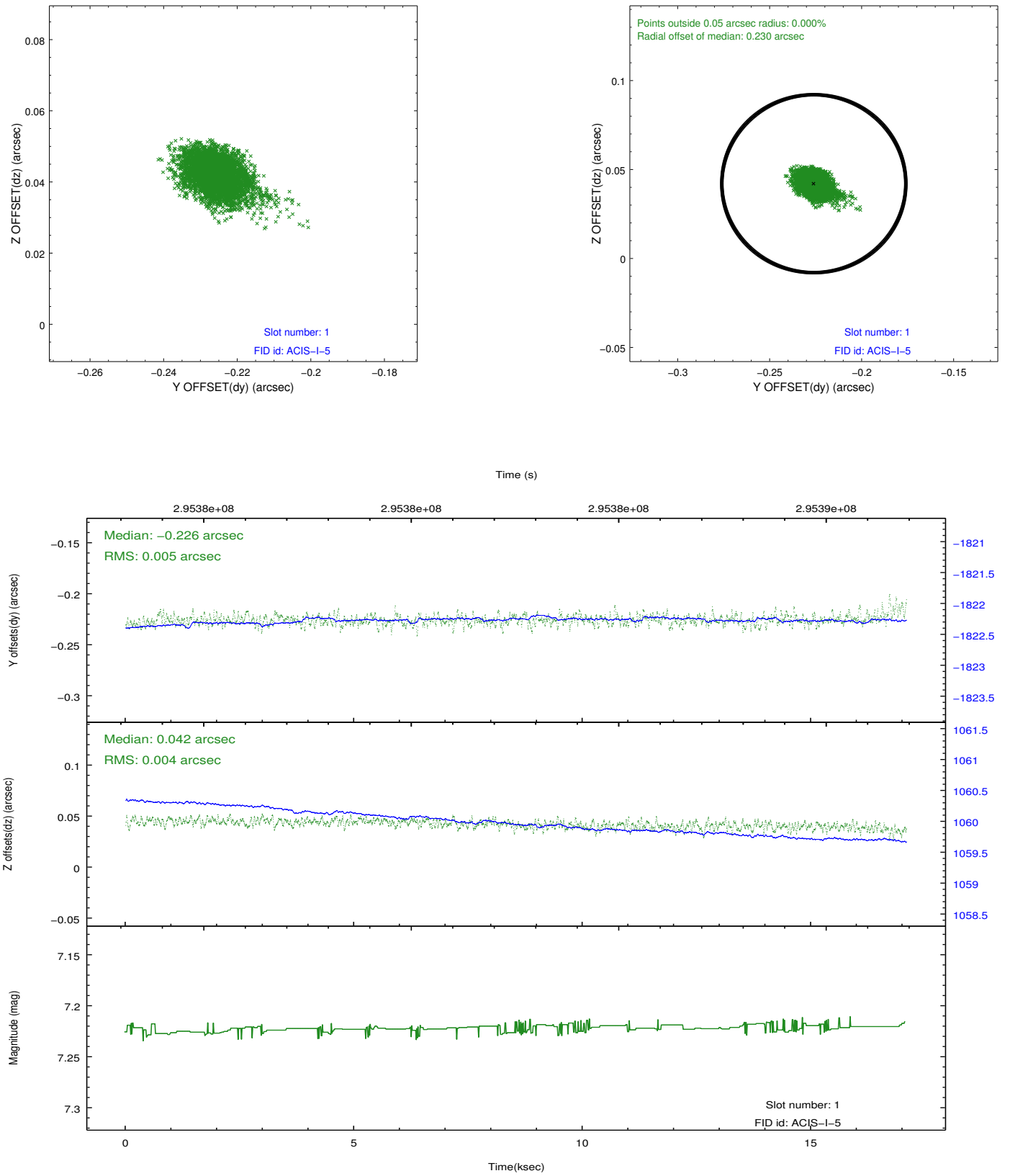


## 2.5 FID Slots

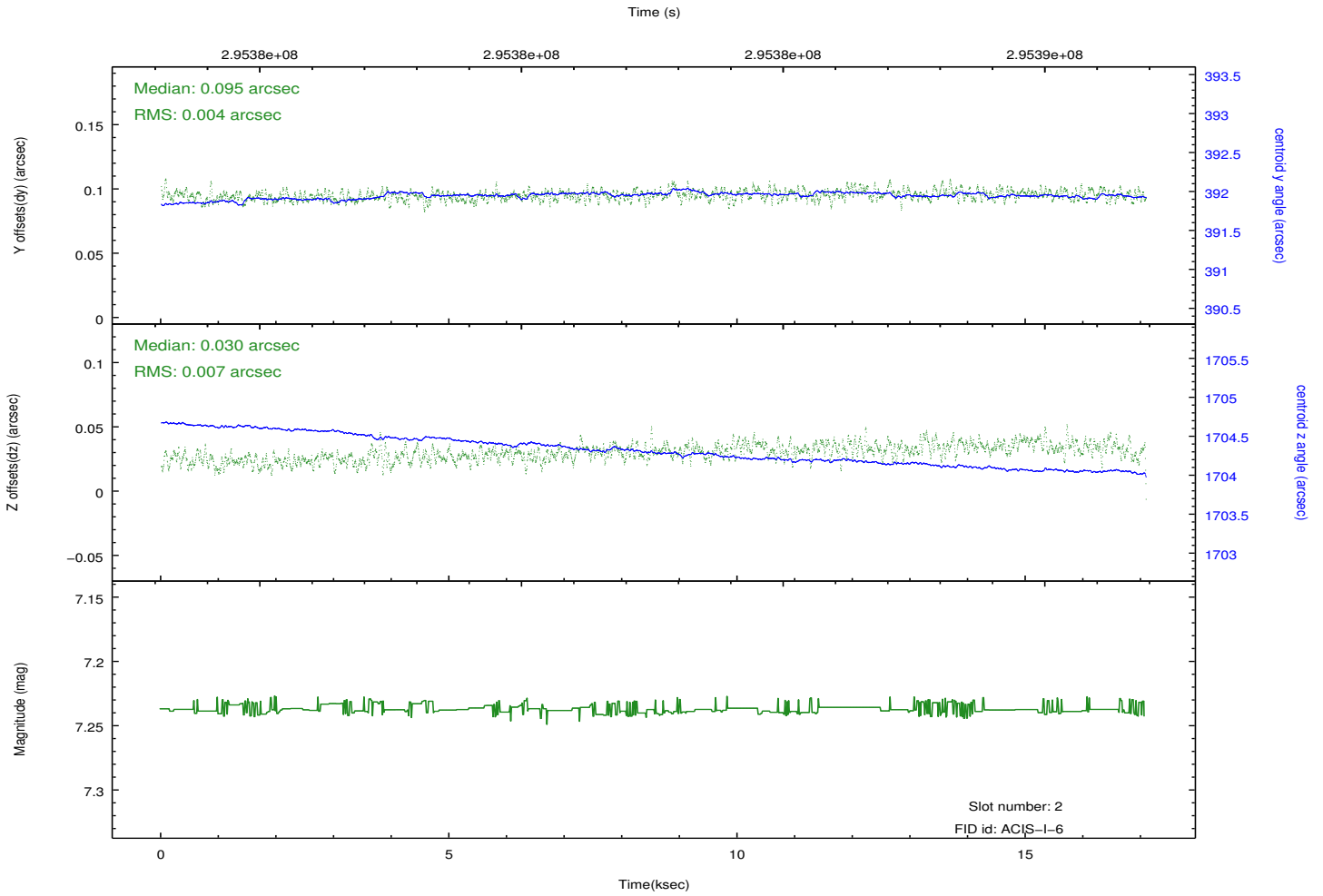
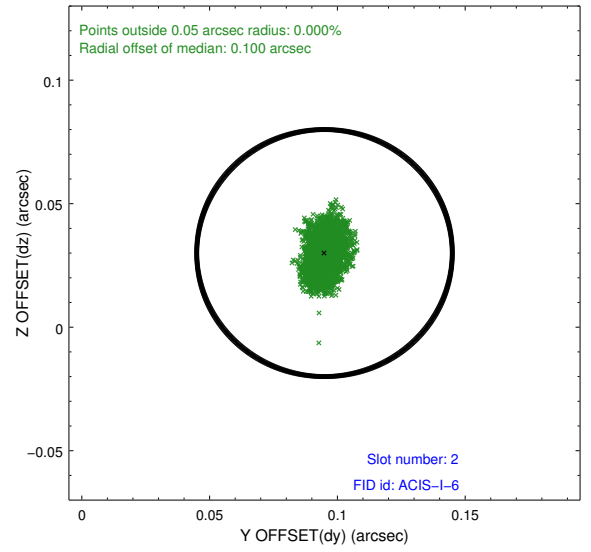
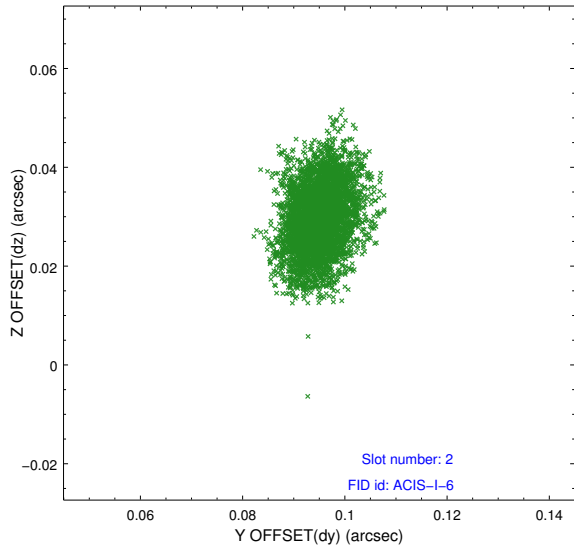
### 2.5.1 Slot 0



## 2.5.2 Slot 1



### 2.5.3 Slot 2



# A Summary

## A.1 Status

V&V Scientist	Jen Lauer
V&V Date (YYYY-MM-DD)	2012.04.25
V&V Edition	1
V&V Disposition and Status	OK
V&V Charge Time	16.8063999

## A.2 Comments

Roll preference met.