

V&V Reference Report

L2 ASCDS Version : 8.4.4

Observation 8585 - L2 Version 2
Chandra X-Ray Center

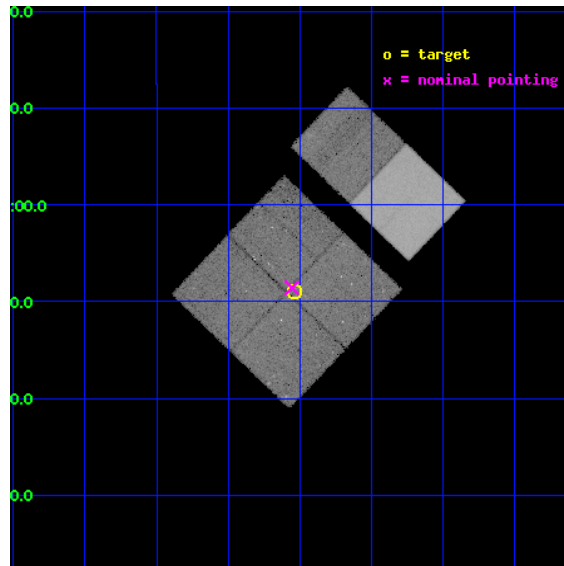
L2 Processing Date : May 24 2012

Contents

1	Front	2
2	OBI	3
2.1	OBI	3
2.1.1	Images	3
2.1.2	Bias	3
2.1.3	Parameters	4
2.1.4	Events	4
2.2	Compared Parameters	5
2.3	Aspect	6
2.4	Star Slots	9
2.4.1	Slot 3	9
2.4.2	Slot 4	10
2.4.3	Slot 5	11
2.4.4	Slot 6	12
2.4.5	Slot 7	13
2.5	FID Slots	14
2.5.1	Slot 0	14
2.5.2	Slot 1	15
2.5.3	Slot 2	16
A	Summary	17
A.1	Status	17
A.2	Comments	17

1 Front

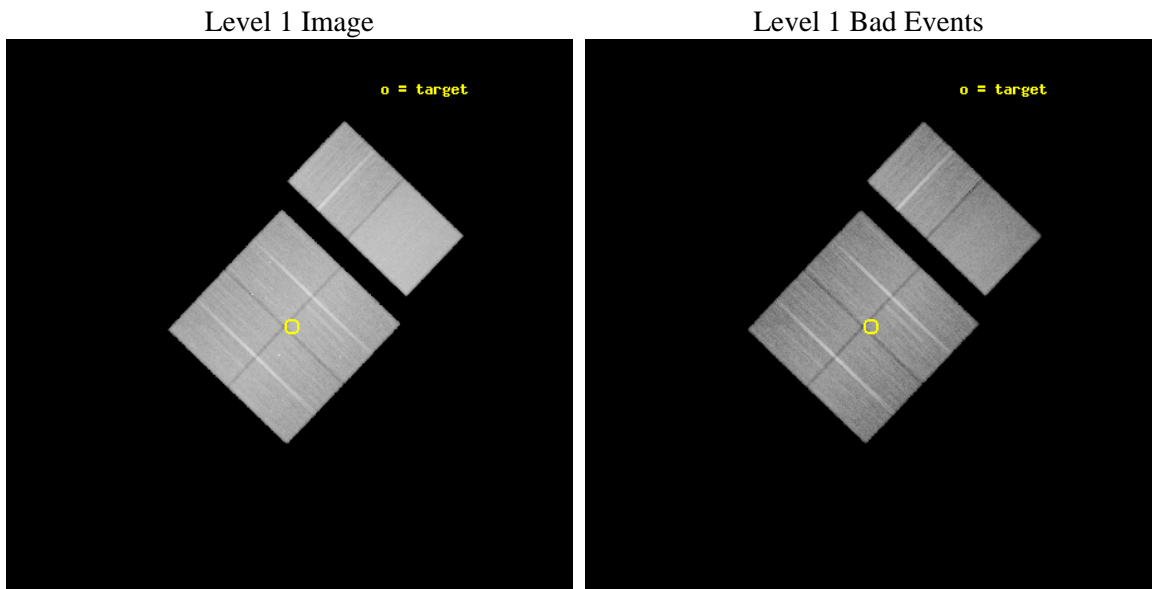
seq_num	200472	Sequence number
obs_id	8585	Observation id
title	Probing the Gas in the Planet Forming Regions of Protoplanetary Disks	Proposal title
observer	Dr. Nuria Calvet	Principal investigator
object	NGC 2068/2071	Source name
dtcycle	0	
cycle	P	events from which exps? Prim/Second/Both
ra_targ	86.51	Observer's specified target RA [deg]
dec_targ	-0.15	Observer's specified target Dec [deg]
ra_nom	86.513913003418	Nominal RA [deg]
dec_nom	-0.14294087808718	Nominal Dec [deg]
roll_nom	43.708695453842	Nominal Roll [deg]
revision	2	Processing version of data
ontime	28831.958862424	Sum of GTIs [s]
livetime	28466.871238787	Livetime [s]
ontime0	28835.19989264	Sum of GTIs [s]
ontime1	28835.19989264	Sum of GTIs [s]
ontime2	28835.19989264	Sum of GTIs [s]
ontime3	28831.958862424	Sum of GTIs [s]
ontime6	28835.19989264	Sum of GTIs [s]
ontime7	28835.19989264	Sum of GTIs [s]
l2events	313497	Number of level 2 events



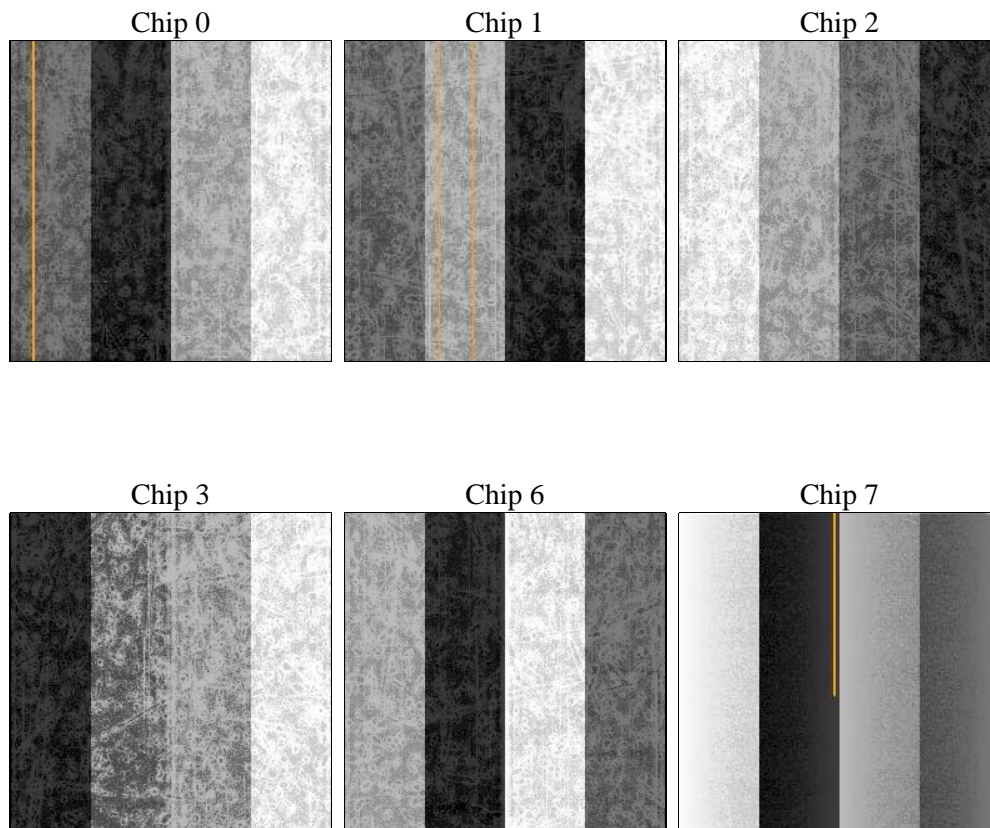
2 OBI

2.1 OBI

2.1.1 Images



2.1.2 Bias



2.1.3 Parameters

obi_num	0	Obi number	sched_exp_time	28658.125000	[s] Scheduled observation exposure time
ascdsver	8.4.4	Processing system revision	ontime	28831.958862424	Sum of GTIs [s]
caldbver	4.4.9	 	ontime0	28835.19989264	Sum of GTIs [s]
date	2012-05-24T17:58:44	Date and time of file creation	ontime1	28835.19989264	Sum of GTIs [s]
revision	2	Processing version of data	ontime2	28835.19989264	Sum of GTIs [s]
			ontime3	28831.958862424	Sum of GTIs [s]
			ontime6	28835.19989264	Sum of GTIs [s]
			ontime7	28835.19989264	Sum of GTIs [s]
			l1events	1871332	Number of level 1 events

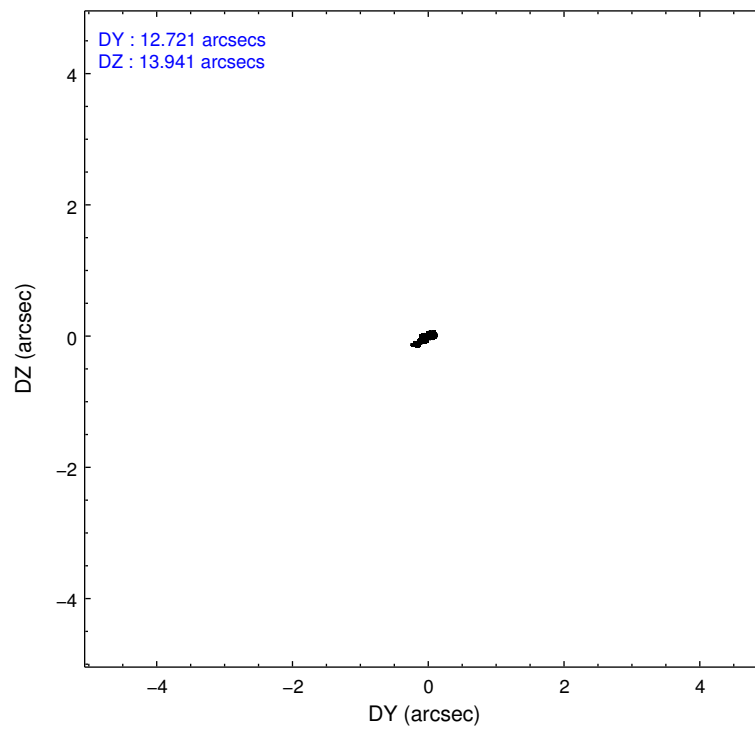
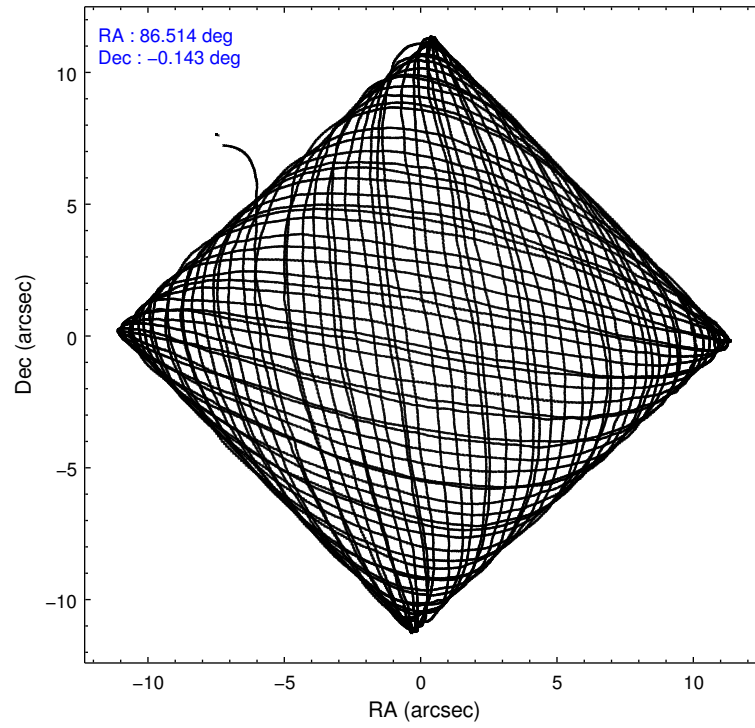
2.1.4 Events

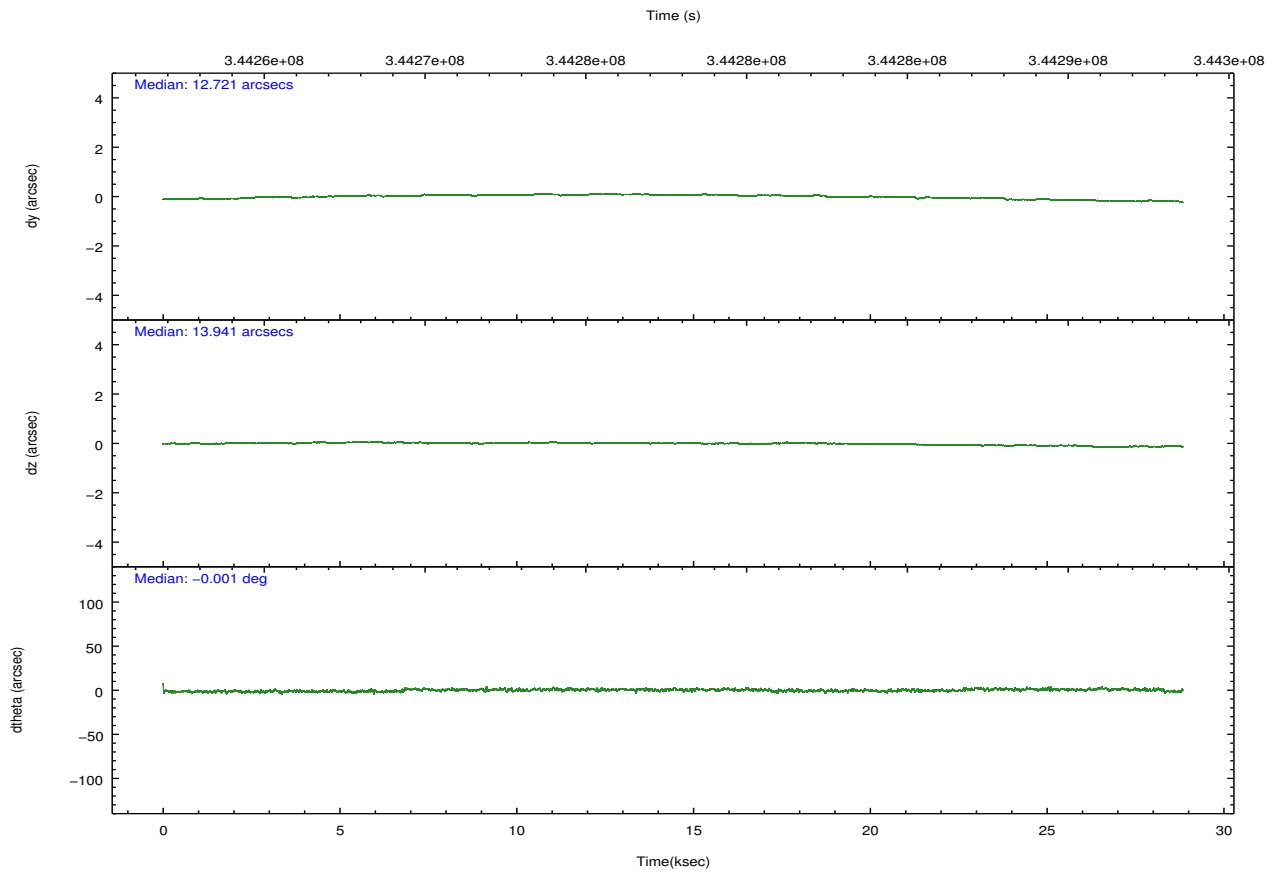
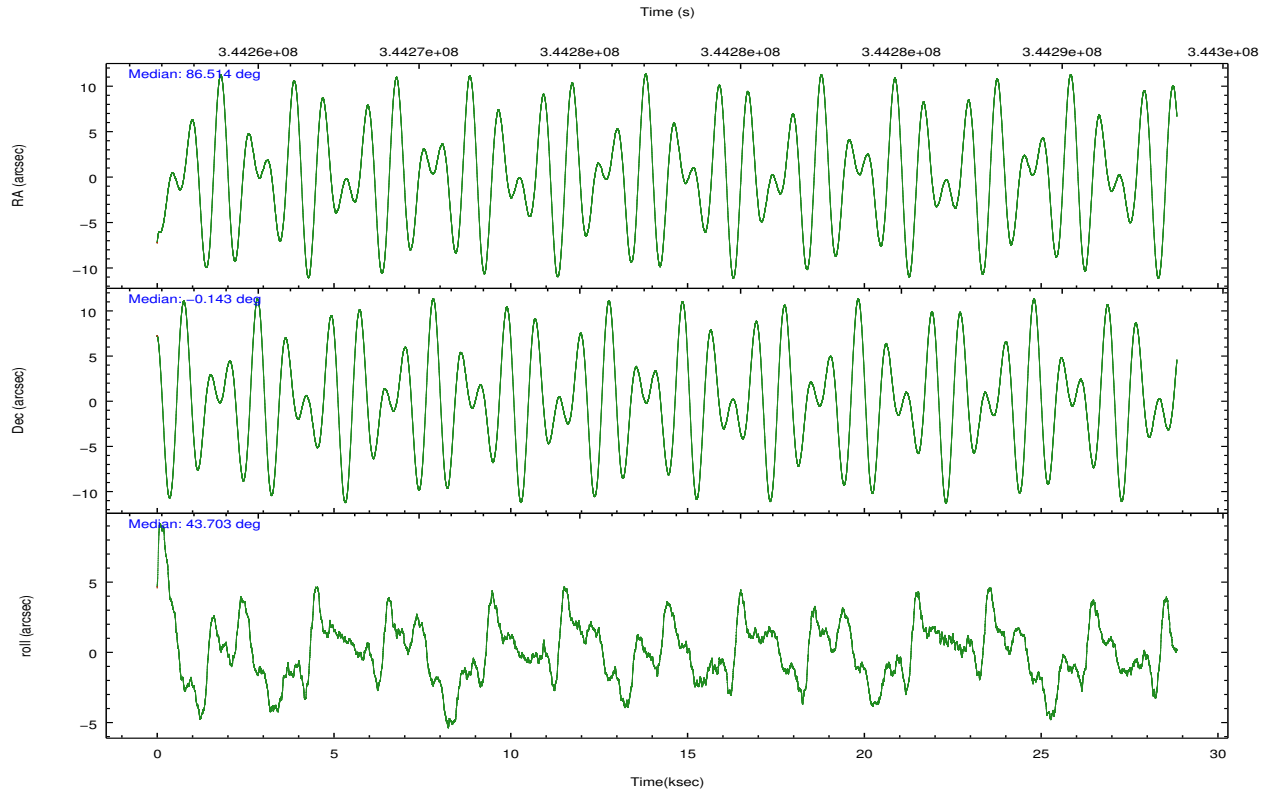
	ccd 0	ccd 1	ccd 2	ccd 3	ccd 6	ccd 7		ccd 0	ccd 1	ccd 2	ccd 3	ccd 6	ccd 7
level 1 events	273541	277489	293027	299337	311461	416477	grade 0 events	15610	15392	15062	15888	13821	14448
rejected events	238176	239593	259152	264319	276964	252053		5%	5%	5%	5%	4%	3%
rejected %	87%	86%	88%	88%	88%	60%	grade 1 events	191	184	194	194	176	435
								0%	0%	0%	0%	0%	0%
							grade 2 events	8233	9344	7730	7330	8157	35135
								3%	3%	2%	2%	2%	8%
							grade 3 events	3361	3590	3267	3420	3357	14471
								1%	1%	1%	1%	1%	3%
							grade 4 events	3275	3617	3391	3381	3291	14268
								1%	1%	1%	1%	1%	3%
							grade 5 events	12435	13511	12219	14568	14795	39263
								4%	4%	4%	4%	4%	9%
							grade 6 events	6533	7654	5965	6623	7543	93738
								2%	2%	2%	2%	2%	22%
							grade 7 events	223903	224197	245199	247933	260321	204719
								81%	80%	83%	82%	83%	49%

2.2 Compared Parameters

Parameter	Planned	Actual	Parameter	Planned	Actual
Instrument	ACIS	ACIS	Obspar format version number	7	7
Detector	ACIS-012367	ACIS-012367	Obspar file type	PREDICTED	ACTUAL
Grating	NONE	NONE	Obspar update status	NONE	UPDATED
Data mode	FAINT	FAINT	Number of optional ACIS chips dropped	0	0
Observation mode	POINTING	POINTING	On-chip summing requested	N	N
[deg] Pointing RA	86.506313	86.51391300341835	Subarray requested	NONE	NONE
[deg] Pointing Dec	-0.169362	-0.1429408780871758	Alternating exposures requested	N	N
[deg] Pointing Roll	43.499990	43.70869545384167	[s] Primary exposure time	0.000000	3.2
[mm] SIM focus pos	-0.782348	-0.7809083437167272			
[mm] SIM defocus	0	0.001439871863259334			
[mm] SIM translation stage pos	-233.592463	-233.5874344608287			
[mm] SIM translation stage offset	0	-0.005018542100998502			
[s] Observation start time (MET)	344263479.184000	344261736.01713			
Observation start date	2008-11-28T12:43:34	2008-11-28T12:15:36			
[s] Observation end time (MET)	344292137.184000	344292368.65615			
Observation end date	2008-11-28T20:41:12	2008-11-28T20:46:08			
Read mode	TIMED	TIMED			

2.3 Aspect



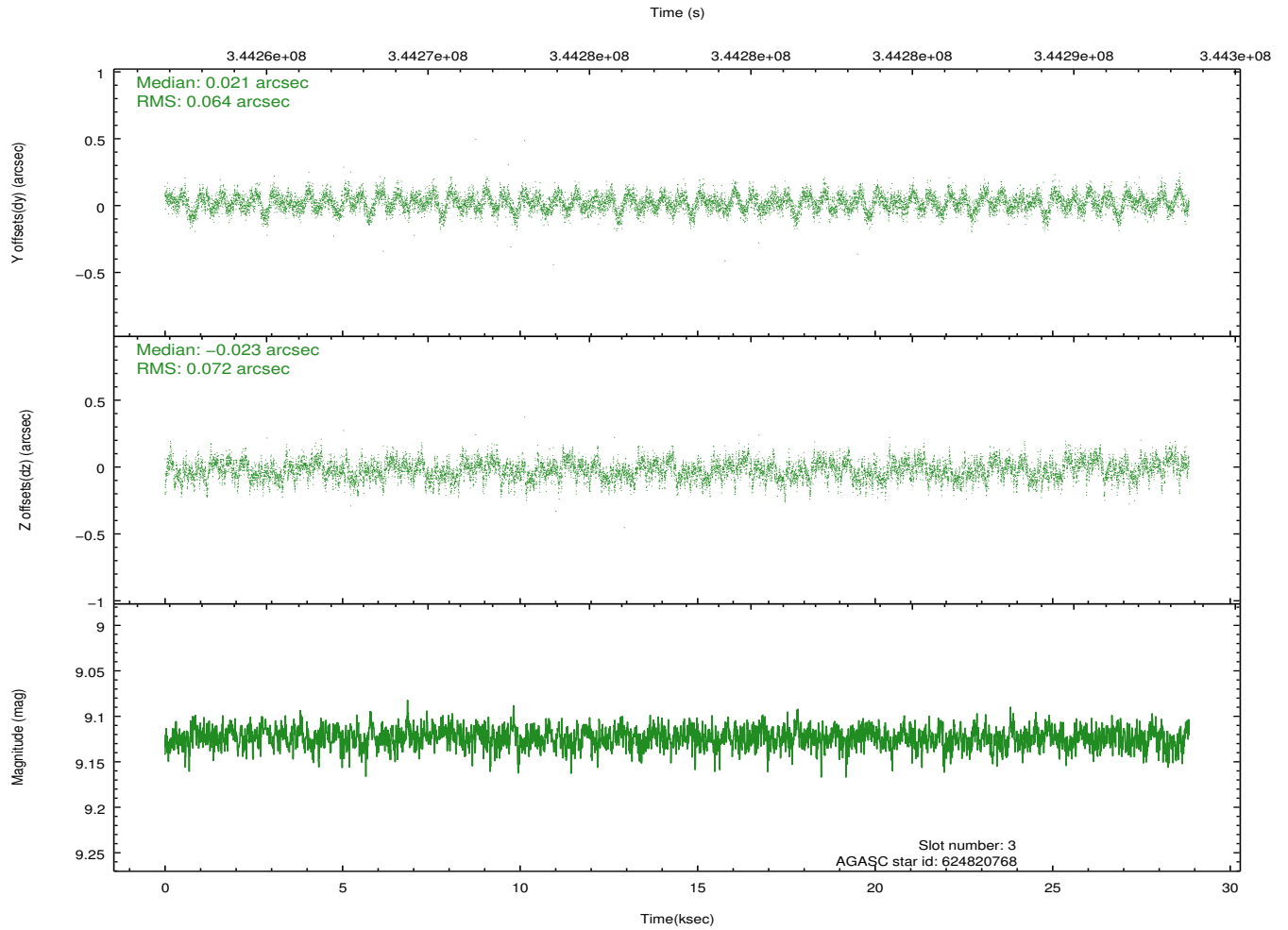
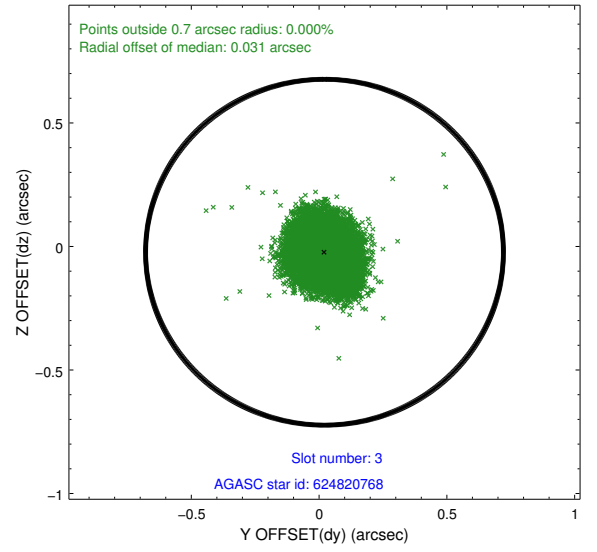
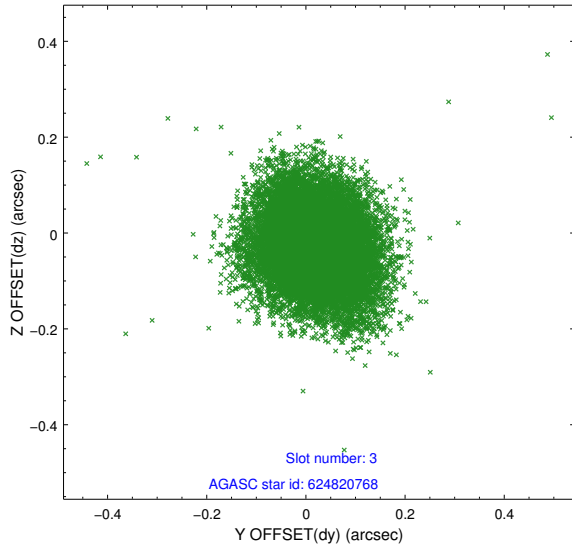


Slot Statistics

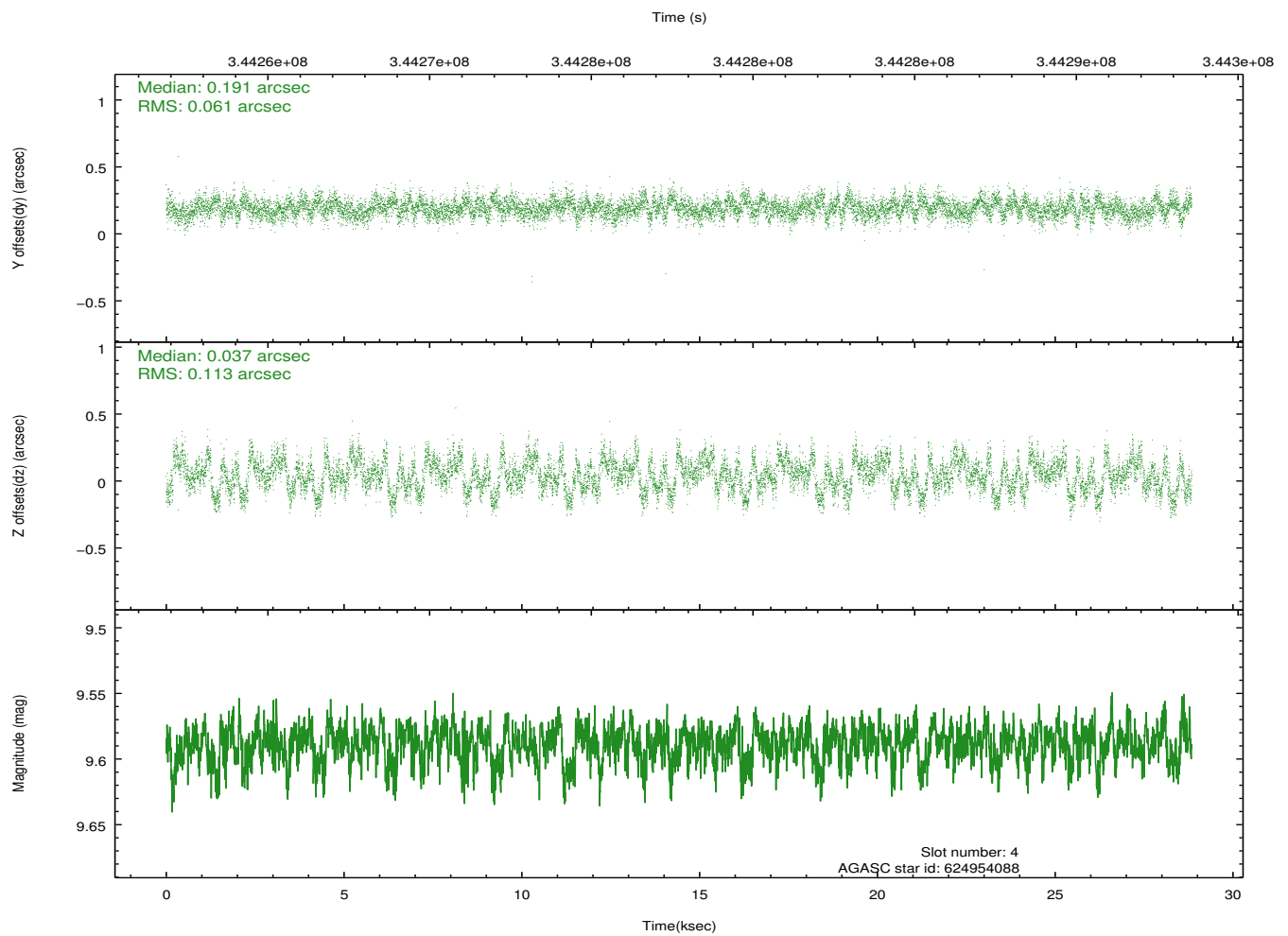
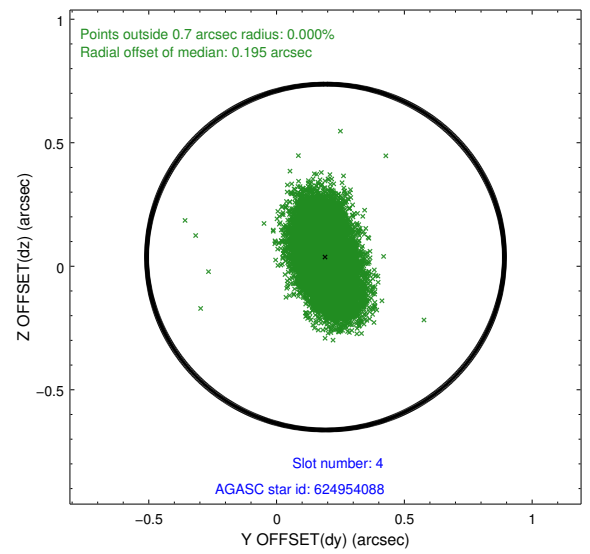
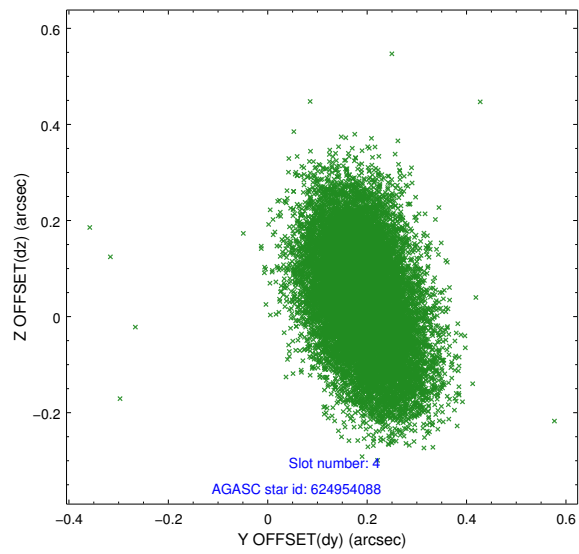
slot	status	id	mag	n_pts	med_dy	med_dz	dr1	dr2	ra	dec	mean_y	mean_z
0	FID	ACIS-I-1	7.04	7035	-0.056	0.071	0.011	0.019	0.000000	0.000000	926.74	-837.44
1	FID	ACIS-I-2	6.96	7035	-0.150	-0.092	0.012	0.019	0.000000	0.000000	-767.39	-844.05
2	FID	ACIS-I-4	6.96	7034	0.108	0.088	0.010	0.019	0.000000	0.000000	2146.79	1062.32
3	GUIDE	624820768	9.12	14058	0.021	-0.023	0.101	0.164	86.202480	-0.061953	-526.97	1033.50
4	GUIDE	624954088	9.59	14050	0.191	0.037	0.137	0.228	86.606399	-0.671650	-982.70	-1559.48
5	GUIDE	624954400	9.13	14055	-0.021	0.180	0.117	0.183	86.607838	-0.762568	-1204.48	-1800.54
6	GUIDE	624954504	9.63	14036	-0.088	-0.139	0.137	0.230	86.731350	-0.894009	-1207.76	-2450.15
7	GUIDE	15212184	10.01	14038	-0.113	-0.064	0.181	0.285	86.645698	0.614228	2305.67	1701.10

2.4 Star Slots

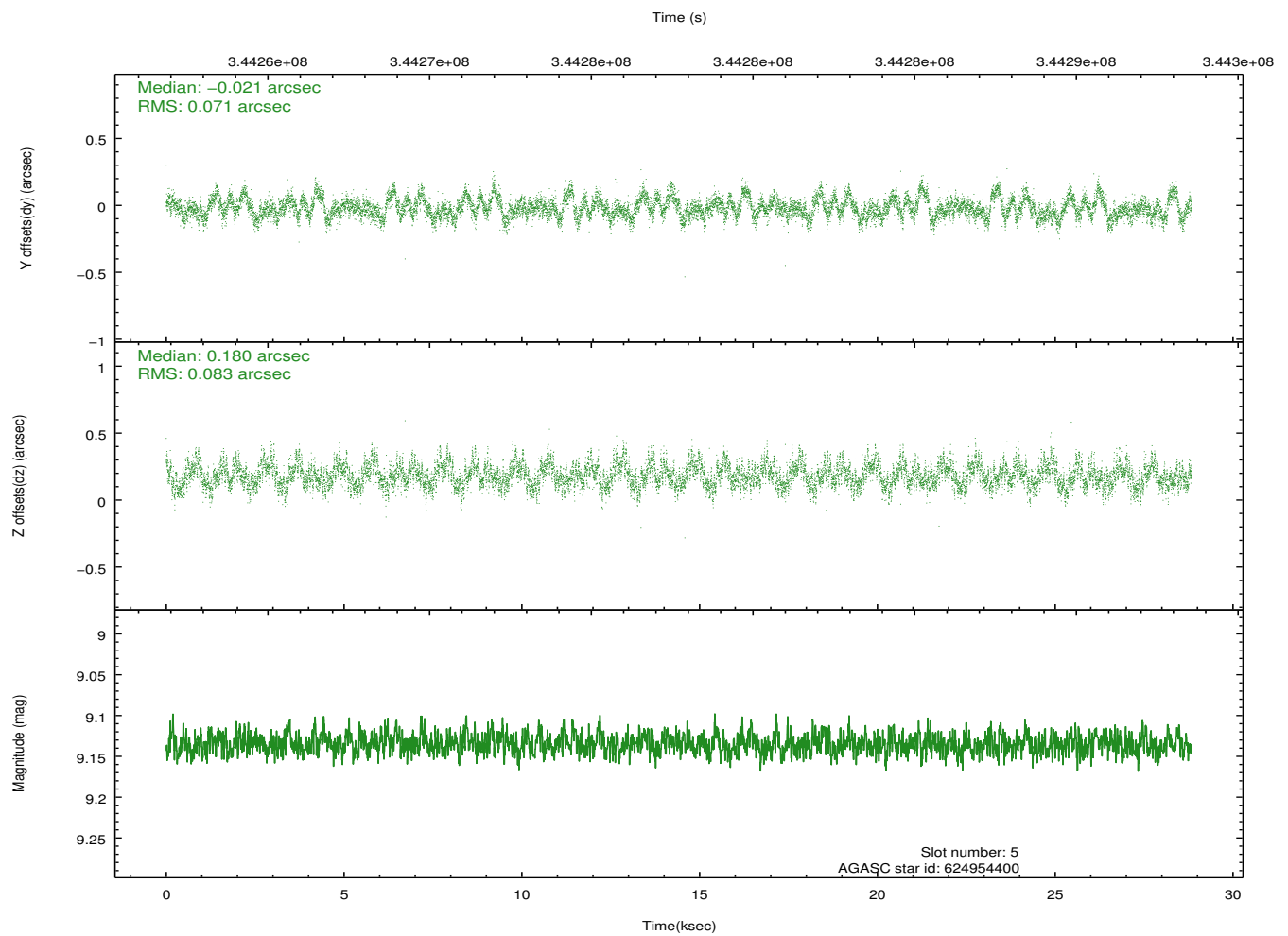
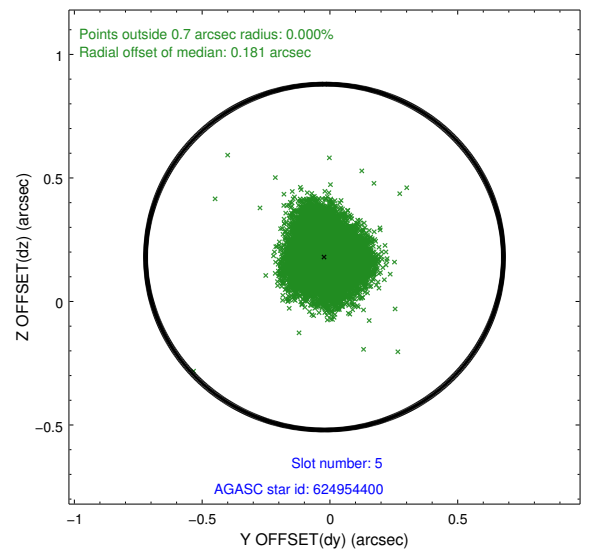
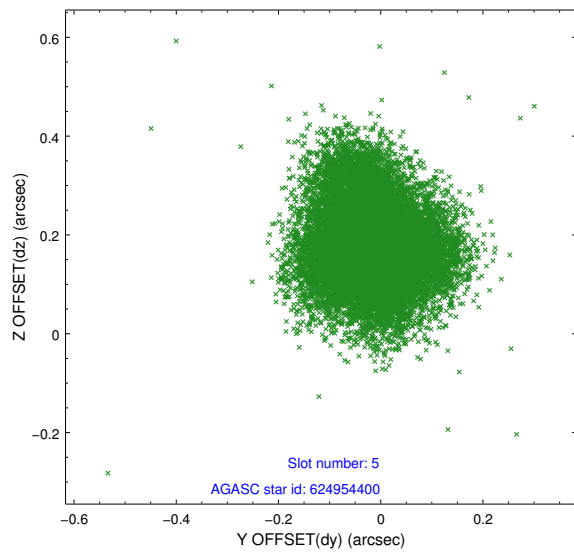
2.4.1 Slot 3



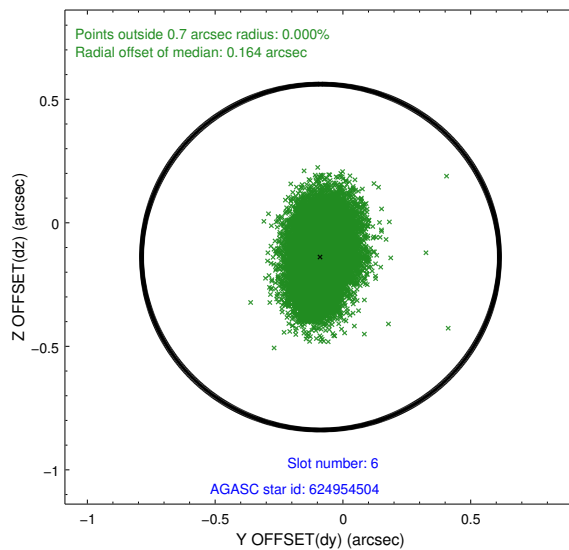
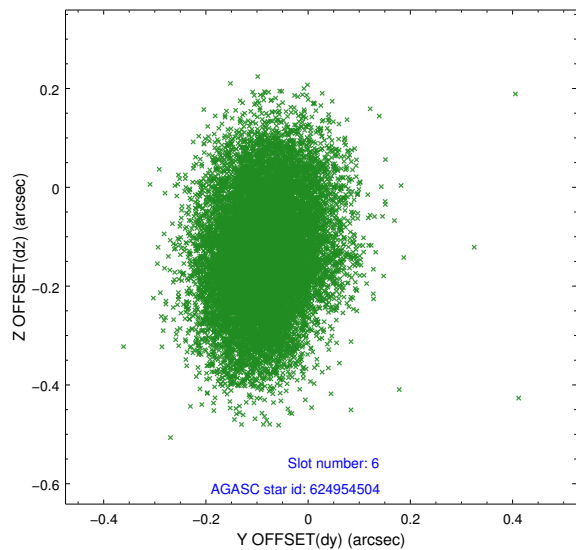
2.4.2 Slot 4



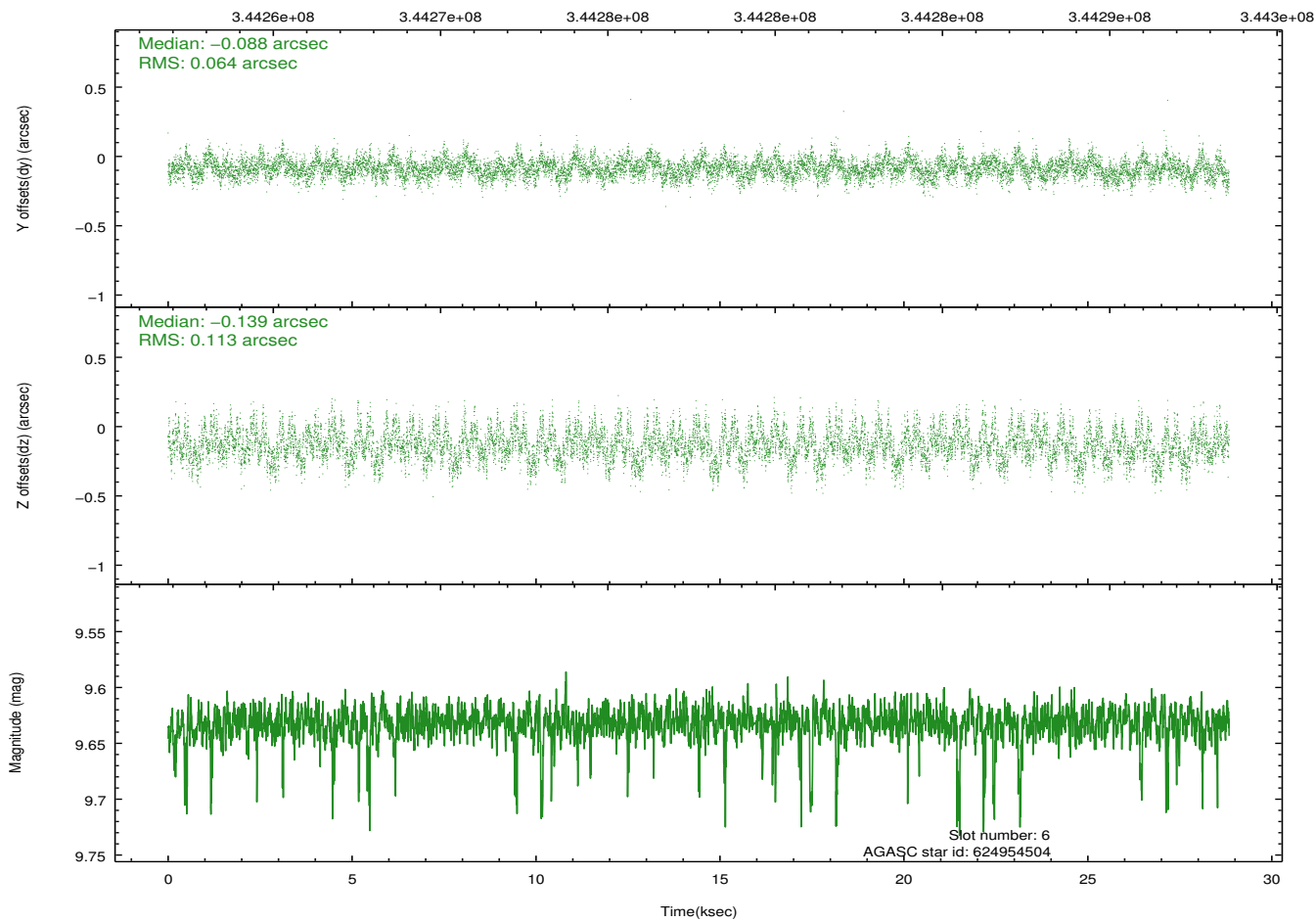
2.4.3 Slot 5



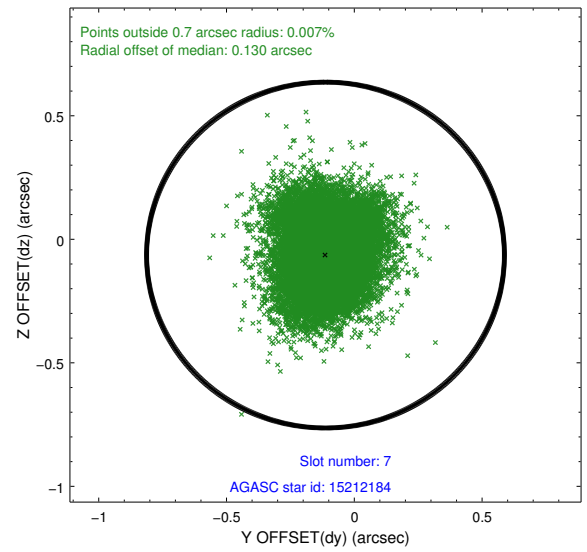
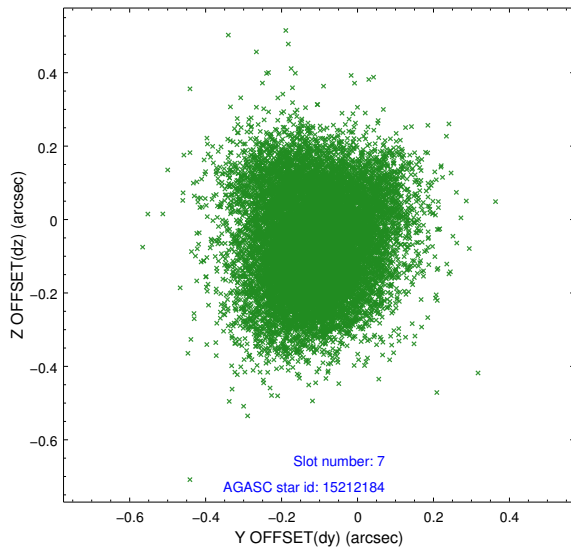
2.4.4 Slot 6



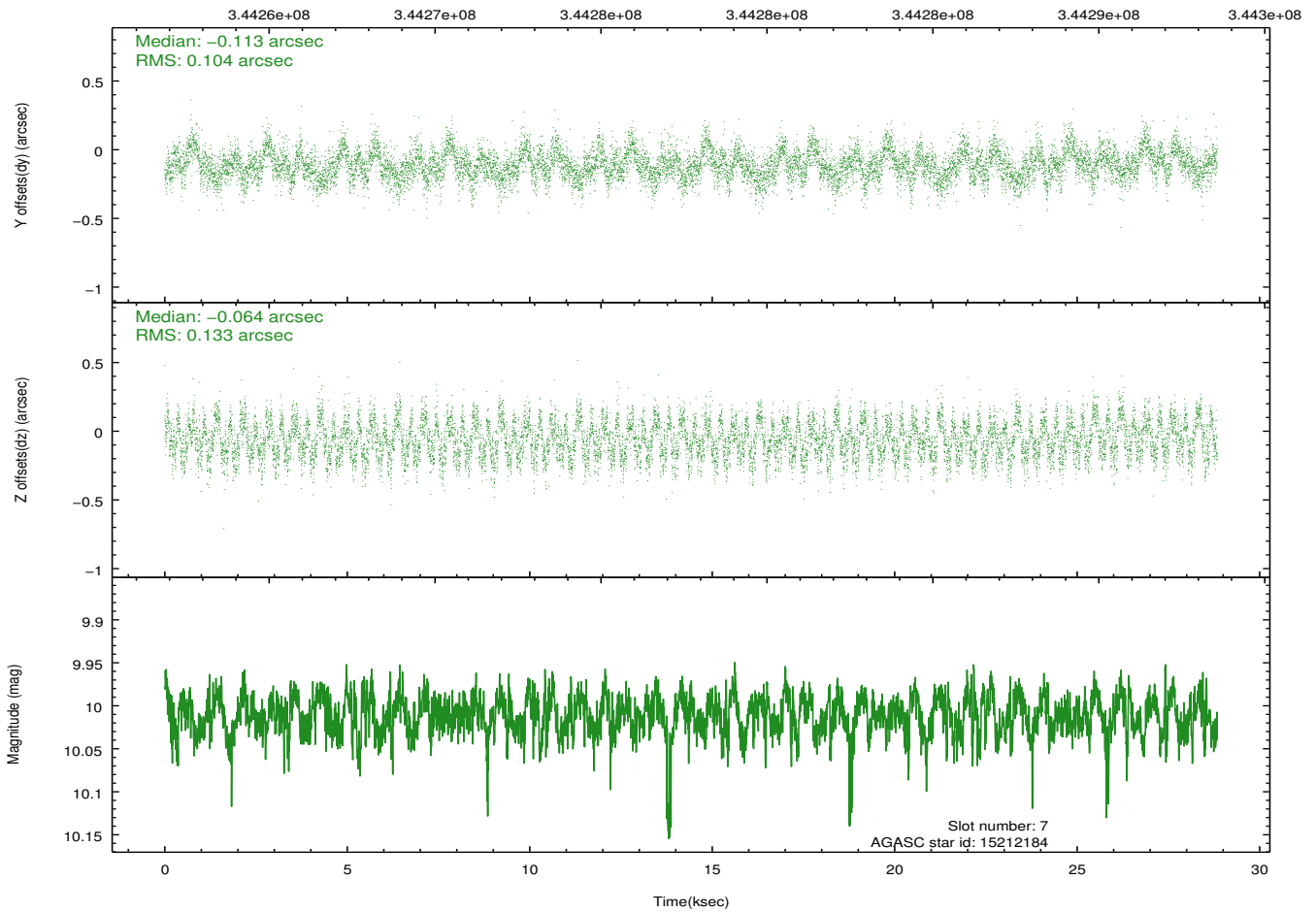
Time (s)



2.4.5 Slot 7

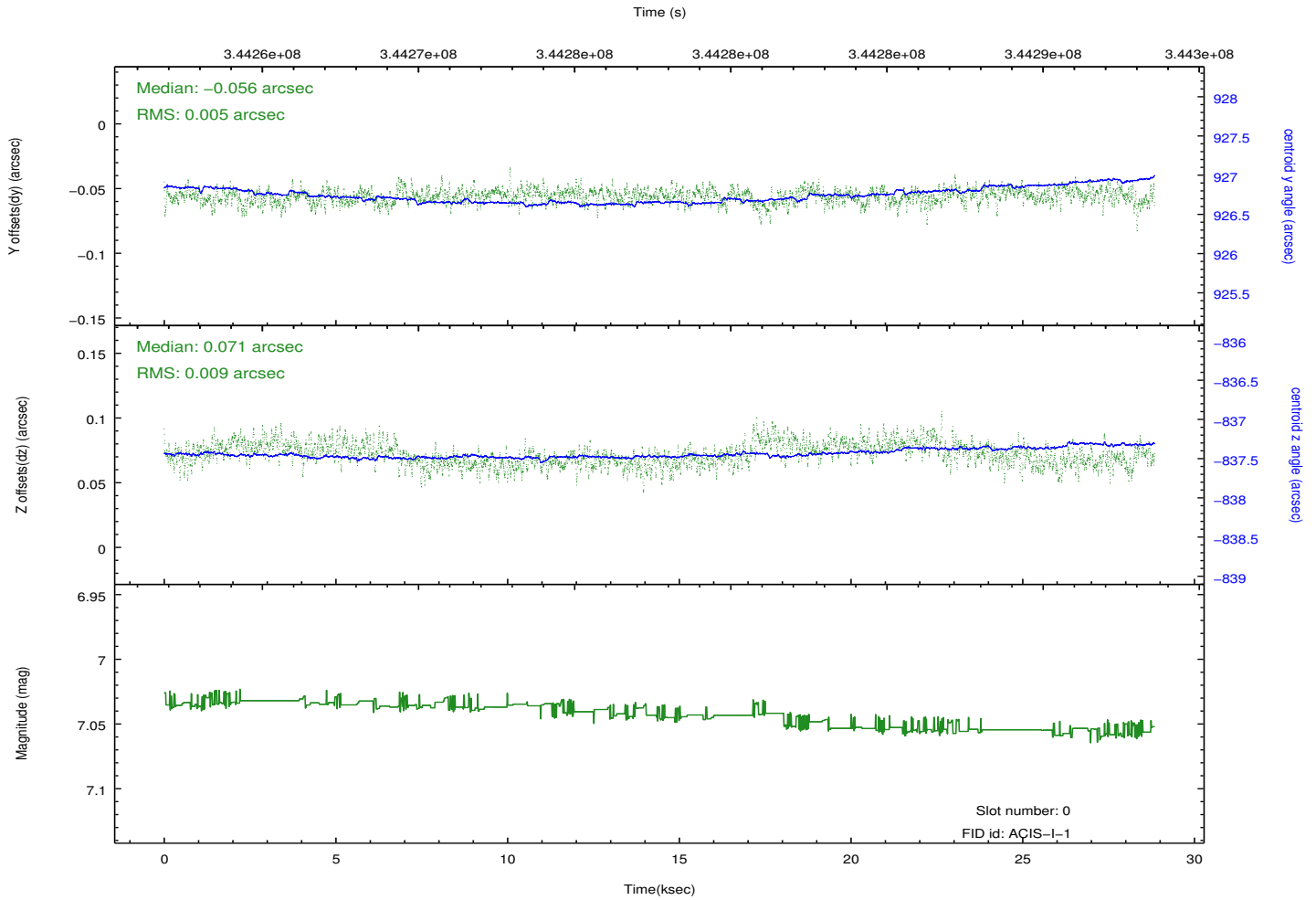
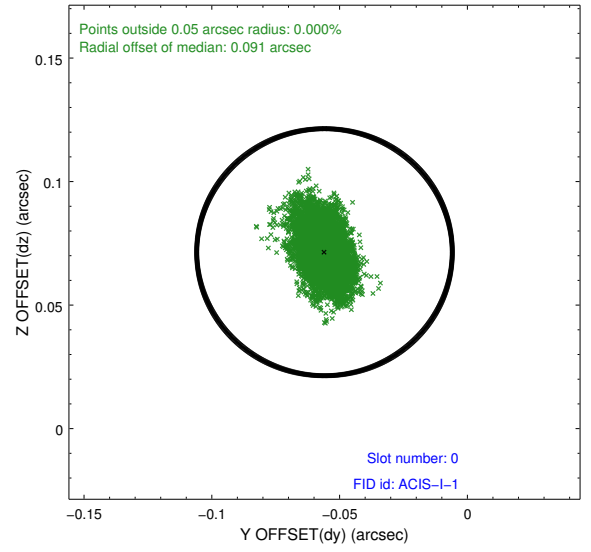
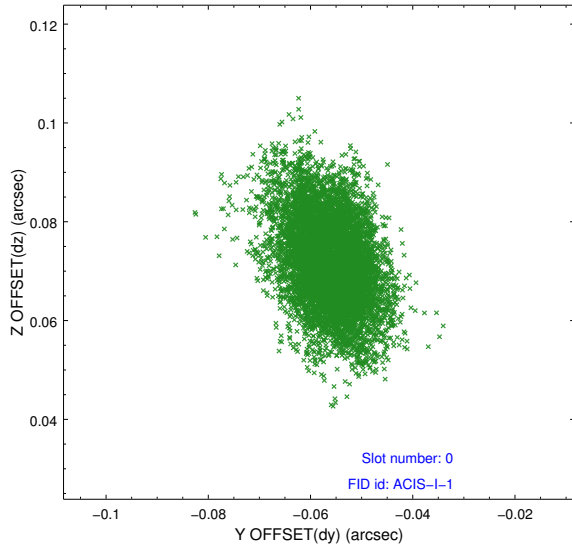


Time (s)

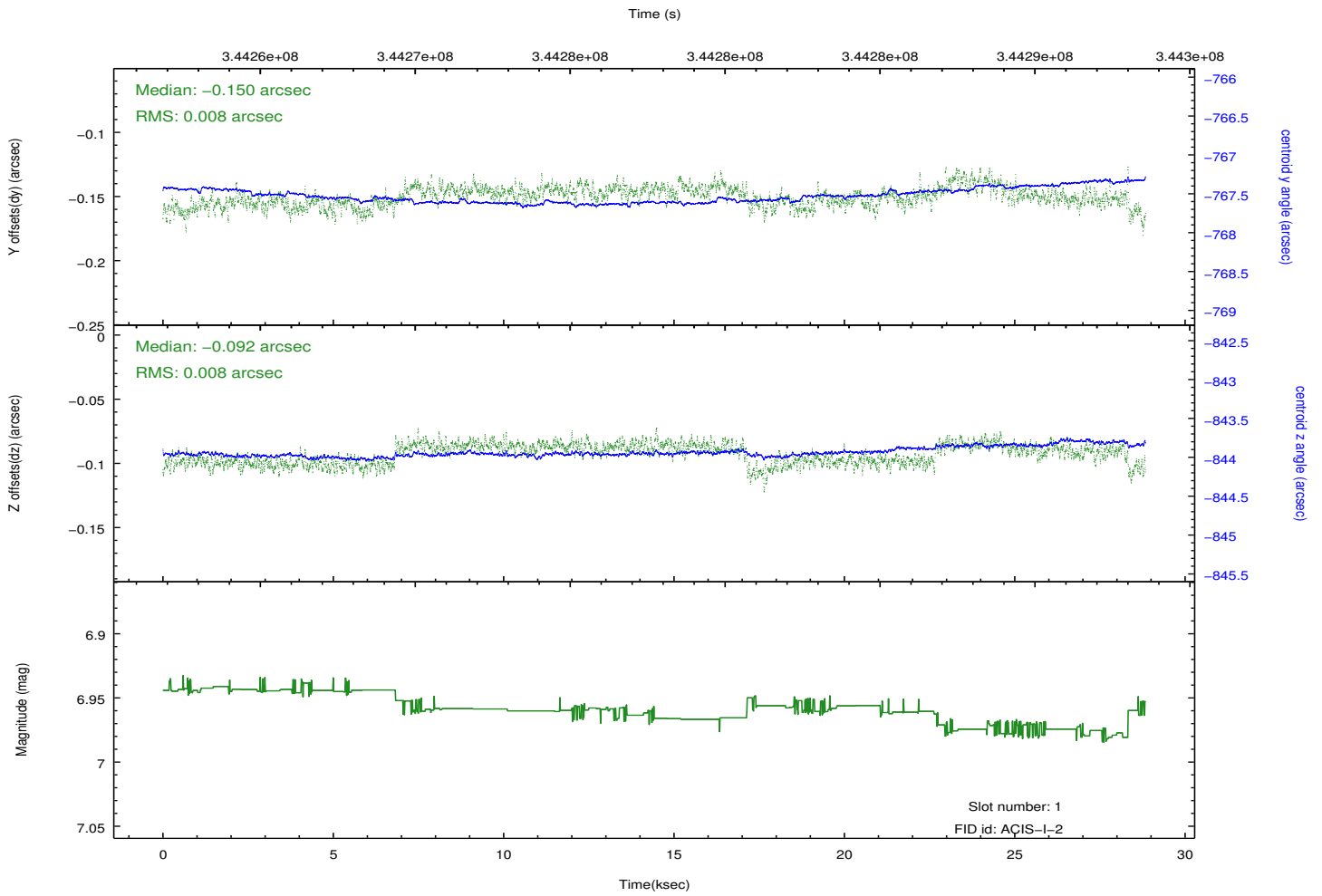
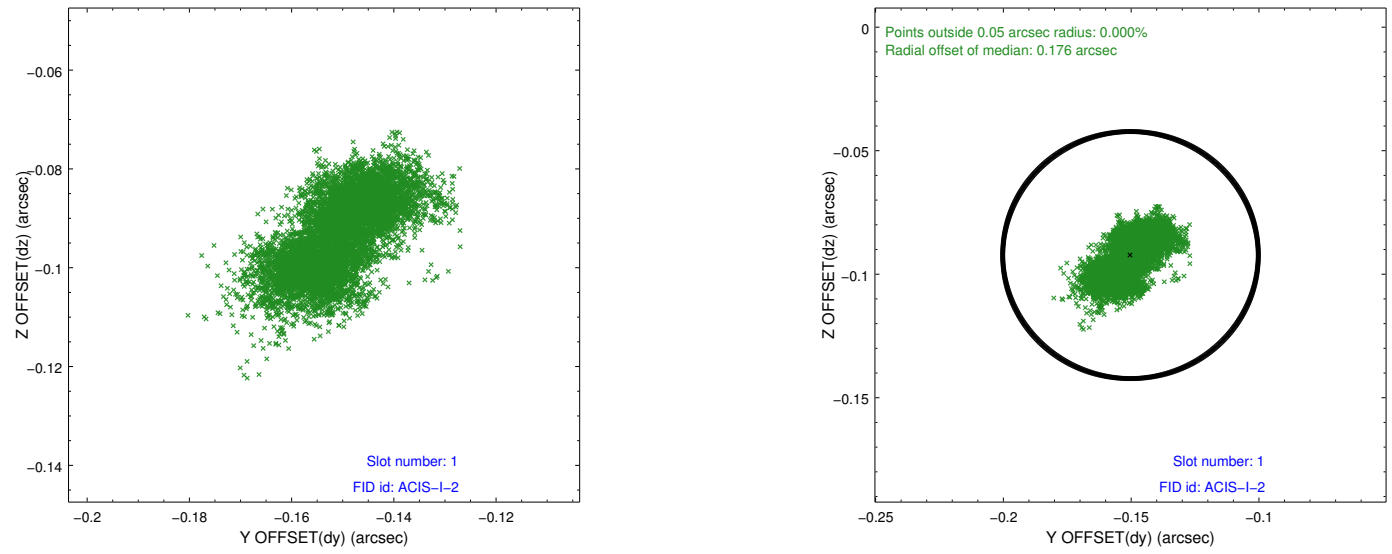


2.5 FID Slots

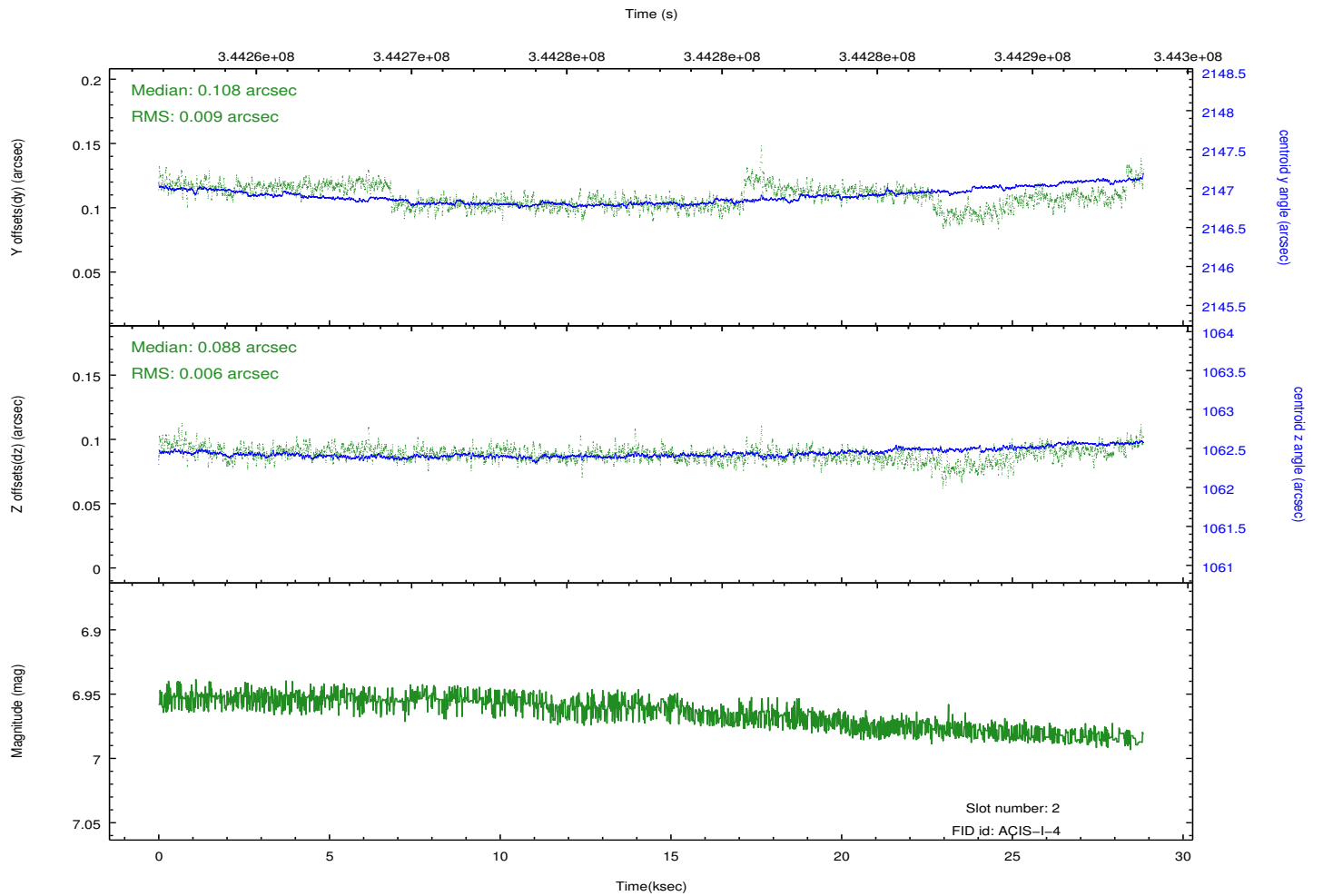
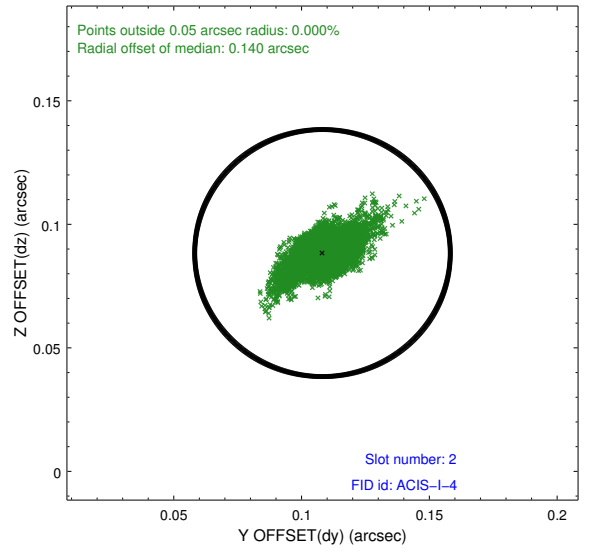
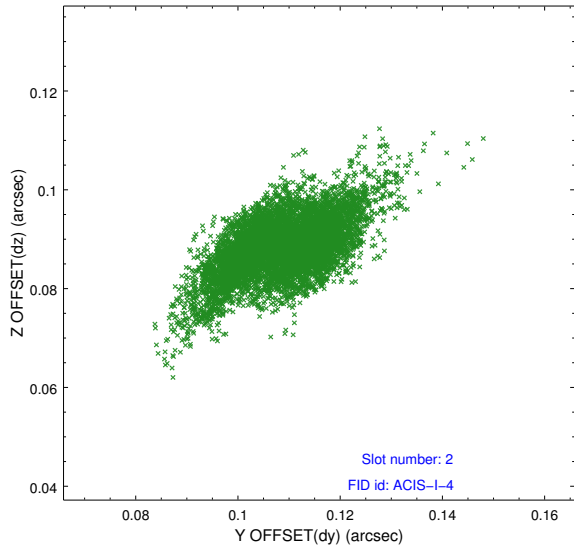
2.5.1 Slot 0



2.5.2 Slot 1



2.5.3 Slot 2



A Summary

A.1 Status

V&V Scientist	Beth Sundheim
V&V Date (YYYY-MM-DD)	2012.05.31
V&V Edition	1
V&V Disposition and Status	OK
V&V Charge Time	28.8319588

A.2 Comments

Joint proposal with Spitzer.