

# V&V Reference Report

## L2 ASCDS Version : 8.4.5

Observation 925 - L2 Version 4  
Chandra X-Ray Center

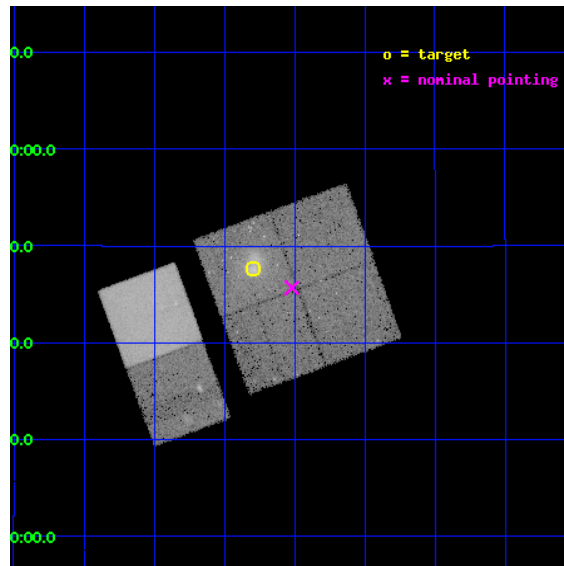
L2 Processing Date : Aug 29 2012

## Contents

<b>1</b>	<b>Front</b>	<b>2</b>
<b>2</b>	<b>OBI</b>	<b>3</b>
2.1	OBI . . . . .	3
2.1.1	Images . . . . .	3
2.1.2	Bias . . . . .	3
2.1.3	Parameters . . . . .	4
2.1.4	Events . . . . .	4
2.2	Compared Parameters . . . . .	5
2.3	Aspect . . . . .	6
2.4	Star Slots . . . . .	9
2.4.1	Slot 3 . . . . .	9
2.4.2	Slot 4 . . . . .	10
2.4.3	Slot 5 . . . . .	11
2.4.4	Slot 6 . . . . .	12
2.4.5	Slot 7 . . . . .	13
2.5	FID Slots . . . . .	14
2.5.1	Slot 0 . . . . .	14
2.5.2	Slot 1 . . . . .	15
2.5.3	Slot 2 . . . . .	16
<b>A</b>	<b>Summary</b>	<b>17</b>
A.1	Status . . . . .	17
A.2	Comments . . . . .	17

# 1 Front

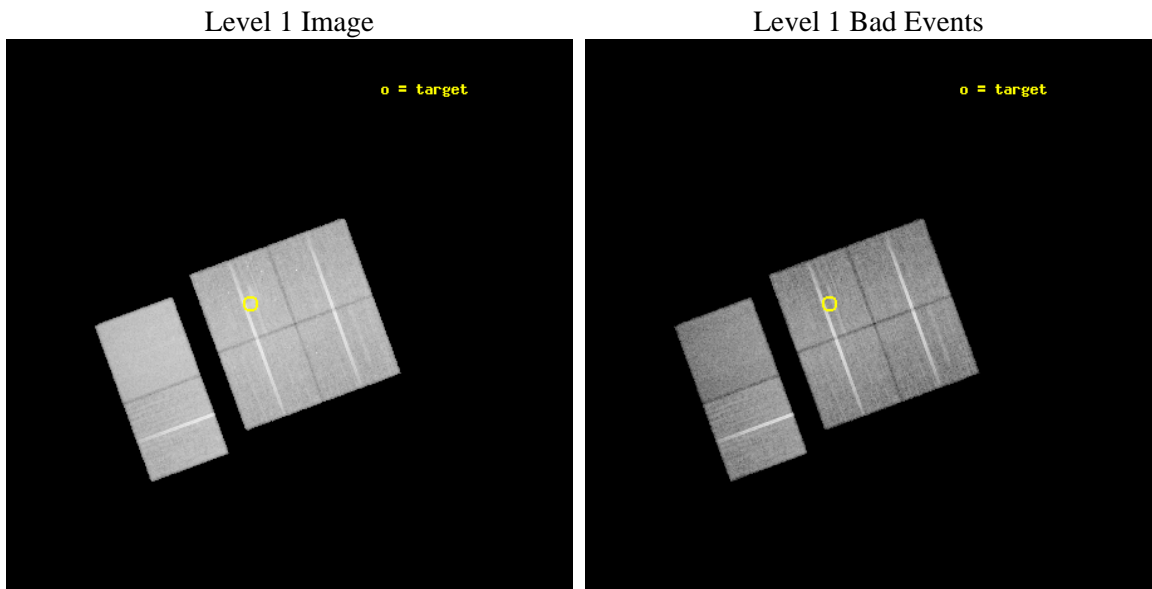
seq_num	800101	Sequence number
obs_id	925	Observation id
title	CLUSTER MASSES AT MODERATE REDSHIFTS	Proposal title
observer	Dr. Erica Ellingson	Principal investigator
object	MS 1006.0+1202	Source name
dtycycle	0	&#160
cycle	P	events from which exps? Prim/Second/Both
ra_targ	152.19904	Observer's specified target RA [deg]
dec_targ	11.79444	Observer's specified target Dec [deg]
ra_nom	152.12991656672	Nominal RA [deg]
dec_nom	11.761359633123	Nominal Dec [deg]
roll_nom	249.85352804553	Nominal Roll [deg]
revision	4	Processing version of data
ontime	29792.000027731	Sum of GTIs [s]
livetime	29414.755784791	Livetime [s]
ontime0	29792.000027731	Sum of GTIs [s]
ontime1	29792.000027731	Sum of GTIs [s]
ontime2	29791.992747471	Sum of GTIs [s]
ontime3	29792.000027731	Sum of GTIs [s]
ontime6	29791.869597554	Sum of GTIs [s]
ontime7	29791.910667479	Sum of GTIs [s]
l2events	222108	Number of level 2 events



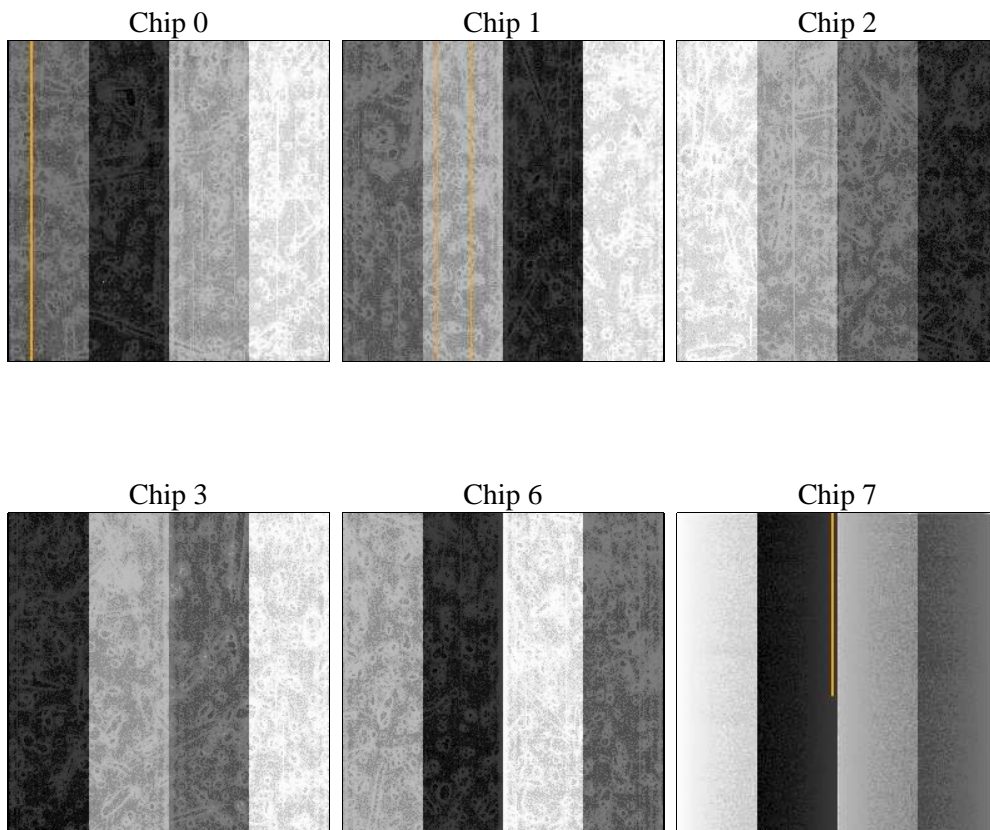
## 2 OBI

### 2.1 OBI

#### 2.1.1 Images



#### 2.1.2 Bias



### 2.1.3 Parameters

obi_num	0	Obi number	sched_exp_time	29655.000000	[s] Scheduled observation exposure time
ascdsver	8.4.5	Processing system revision	ontime	29792.000027731	Sum of GTIs [s]
caldbver	4.5.1.1	&#160	ontime0	29792.000027731	Sum of GTIs [s]
date	2012-08-29T15:31:23	Date and time of file creation	ontime1	29792.000027731	Sum of GTIs [s]
revision	4	Processing version of data	ontime2	29791.992747471	Sum of GTIs [s]
			ontime3	29792.000027731	Sum of GTIs [s]
			ontime6	29791.869597554	Sum of GTIs [s]
			ontime7	29791.910667479	Sum of GTIs [s]
			l1events	1238721	Number of level 1 events

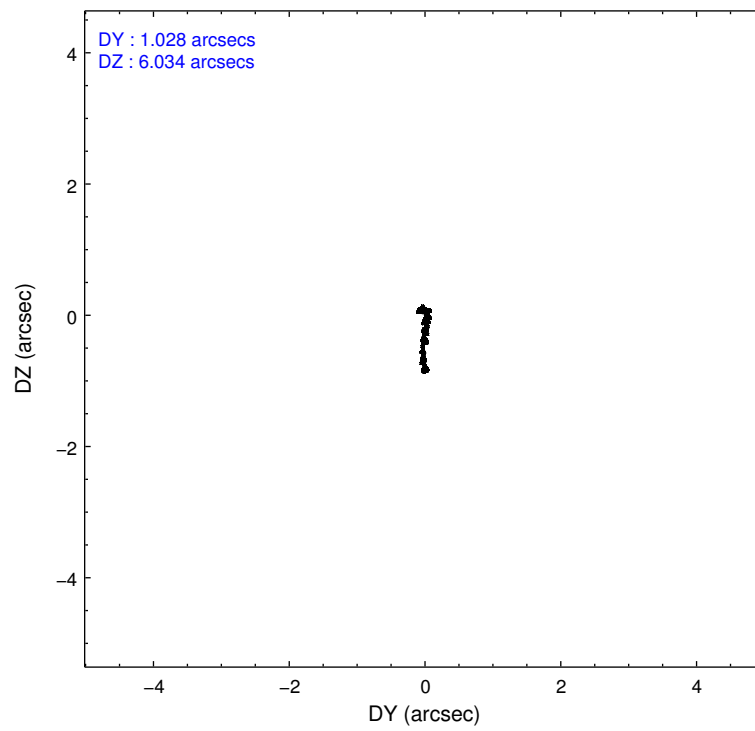
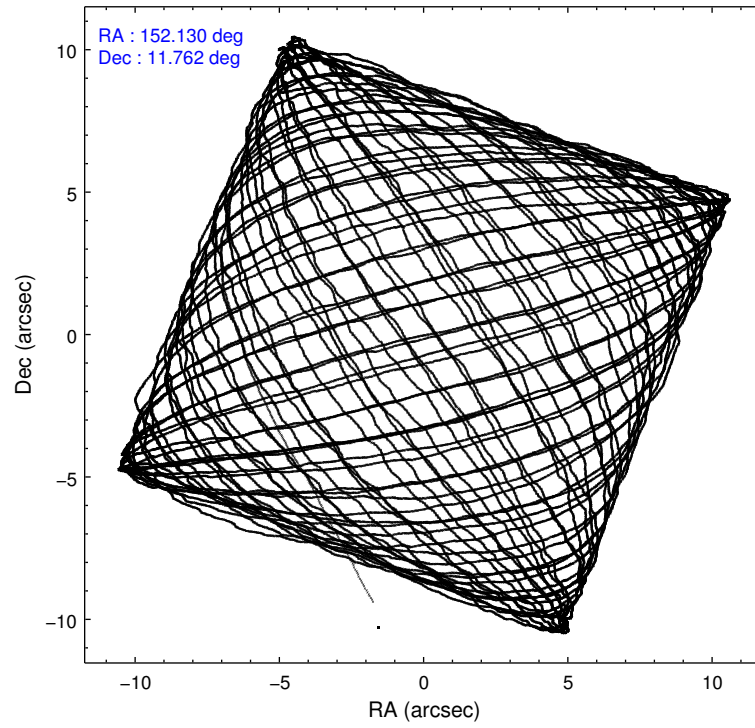
### 2.1.4 Events

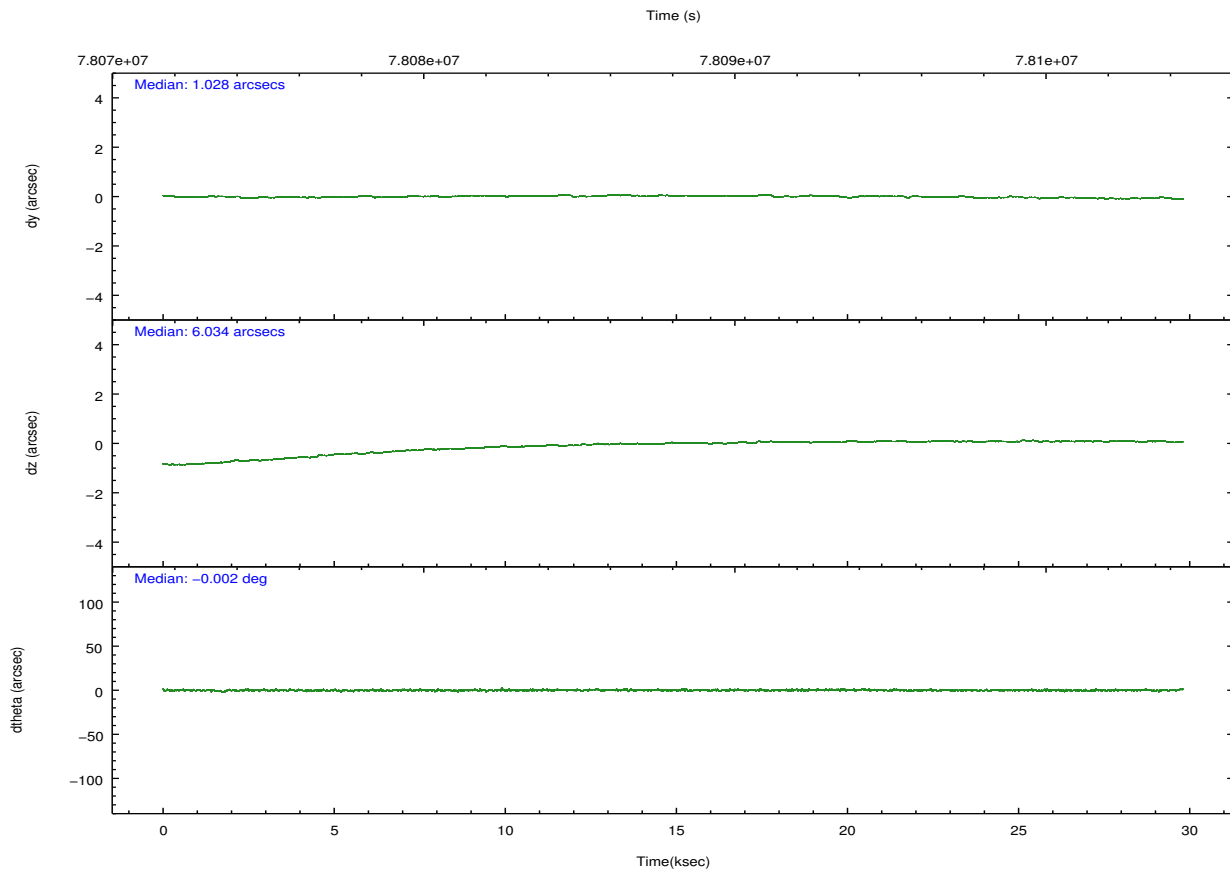
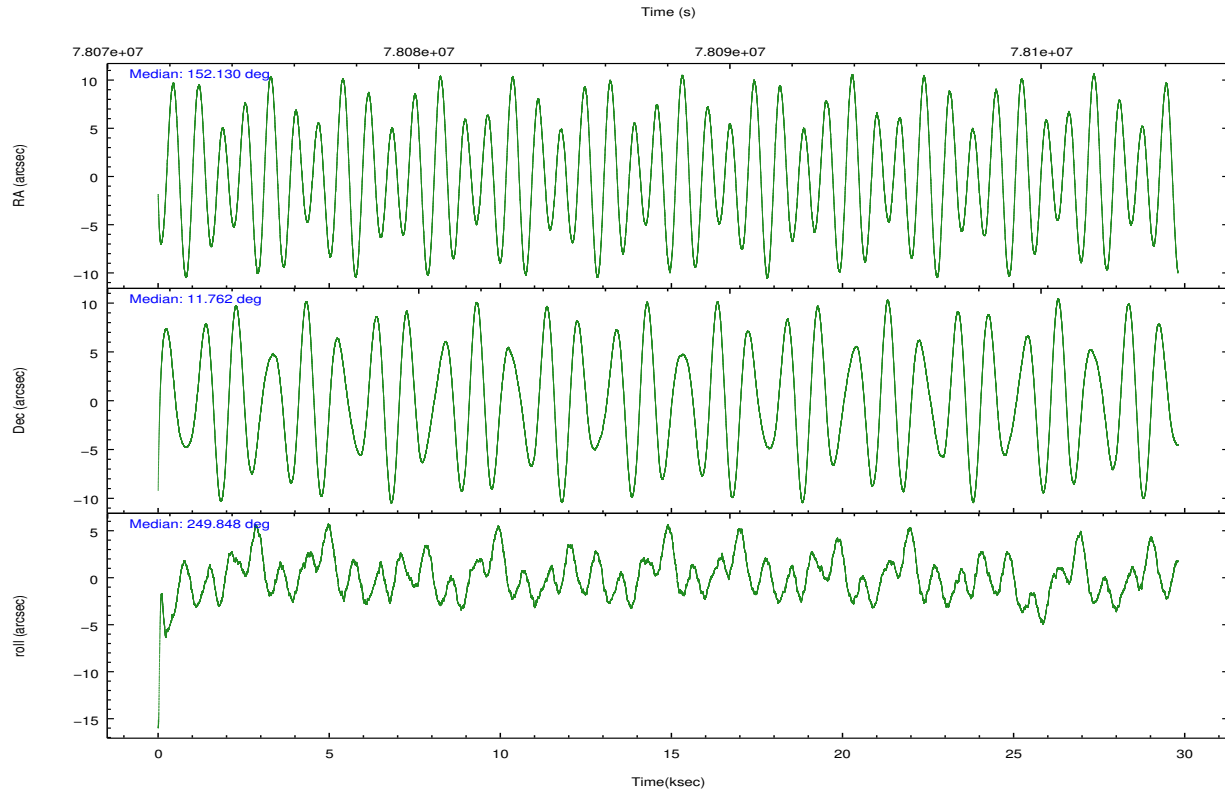
	ccd 0	ccd 1	ccd 2	ccd 3	ccd 6	ccd 7		ccd 0	ccd 1	ccd 2	ccd 3	ccd 6	ccd 7
level 1 events	183371	184849	201669	212684	209180	246968	grade 0 events	10645	10342	9982	19969	9960	12391
rejected events	159192	160140	178851	177749	185634	133722		5%	5%	4%	9%	4%	5%
rejected %	86%	86%	88%	83%	88%	54%	grade 1 events	98	84	83	131	78	233
								0%	0%	0%	0%	0%	0%
							grade 2 events	5201	5234	5014	5873	4954	22366
								2%	2%	2%	2%	2%	9%
							grade 3 events	2227	2456	1981	2496	2230	10661
								1%	1%	0%	1%	1%	4%
							grade 4 events	2127	2403	2043	2428	2164	10536
								1%	1%	1%	1%	1%	4%
							grade 5 events	6240	6567	5955	6690	7637	22064
								3%	3%	2%	3%	3%	8%
							grade 6 events	4246	4539	4045	4459	4481	58502
								2%	2%	2%	2%	2%	23%
							grade 7 events	152587	153224	172566	170638	177676	110215
								83%	82%	85%	80%	84%	44%

## 2.2 Compared Parameters

Parameter	Planned	Actual	Parameter	Planned	Actual
Instrument	ACIS	ACIS	Obspar format version number	7	7
Detector	ACIS-012367	ACIS-012367	Obspar file type	PREDICTED	ACTUAL
Grating	NONE	NONE	Obspar update status	NONE	UPDATED
Data mode	VFAINT	VFAINT	Number of optional ACIS chips dropped	0	0
Observation mode	POINTING	POINTING	On-chip summing requested	N	N
[deg] Pointing RA	152.125250	152.1299165667176	Subarray requested	NONE	NONE
[deg] Pointing Dec	11.788538	11.76135963312344	Alternating exposures requested	N	N
[deg] Pointing Roll	249.645805	249.8535280455342	[s] Primary exposure time	0.000000	3.2
[mm] SIM focus pos	-0.782348	-0.7809083437167272			
[mm] SIM defocus	0	0.001439871863259334			
[mm] SIM translation stage pos	-233.592463	-233.5874344608287			
[mm] SIM translation stage offset	0	-0.005018542100998502			
[s] Observation start time (MET)	78073259.184000	78072026.863028			
Observation start date	2000-06-22T14:59:55	2000-06-22T14:40:26			
[s] Observation end time (MET)	78102914.184000	78103915.639204			
Observation end date	2000-06-22T23:14:10	2000-06-22T23:31:55			
Read mode	TIMED	TIMED			

## 2.3 Aspect



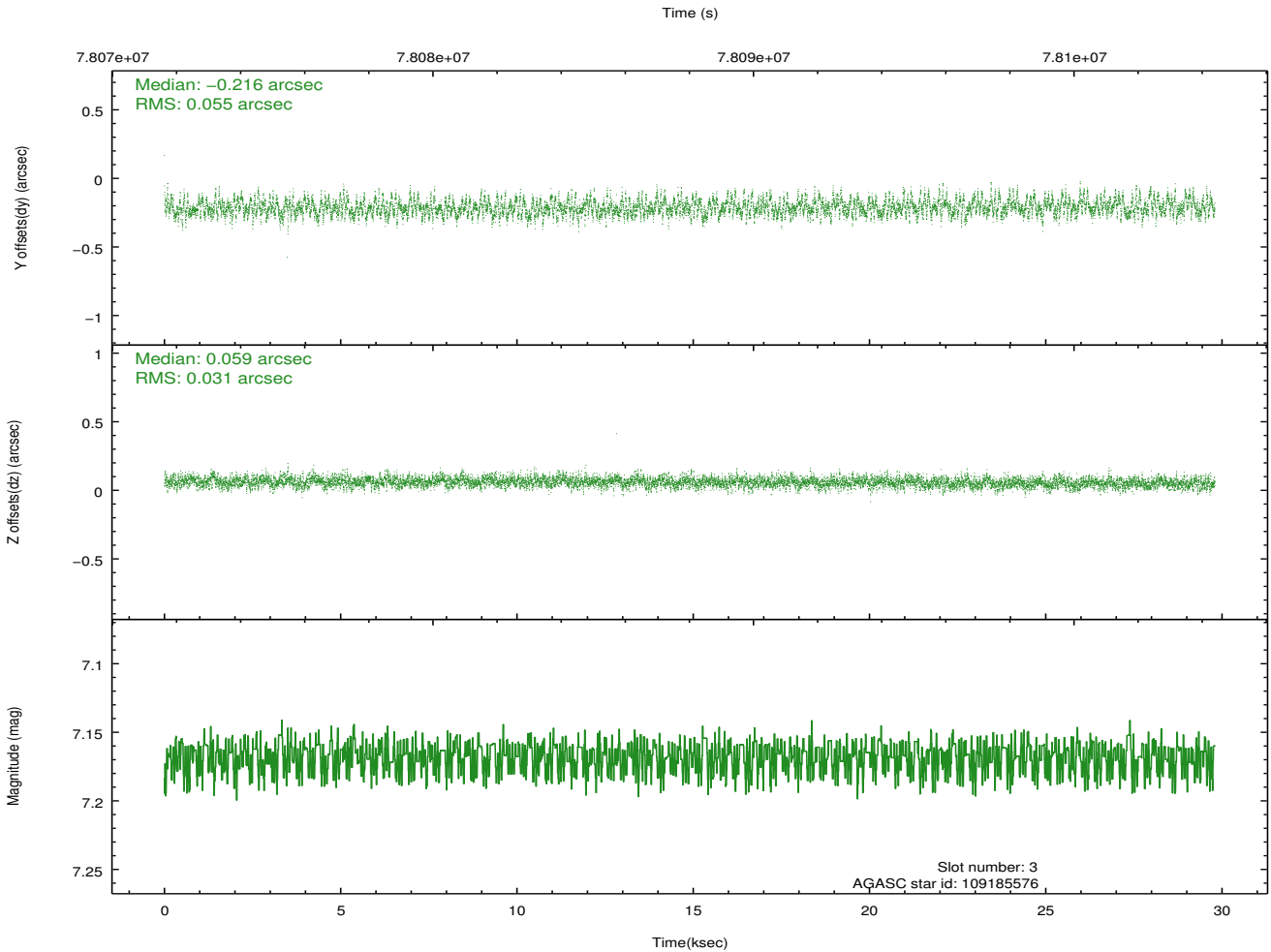
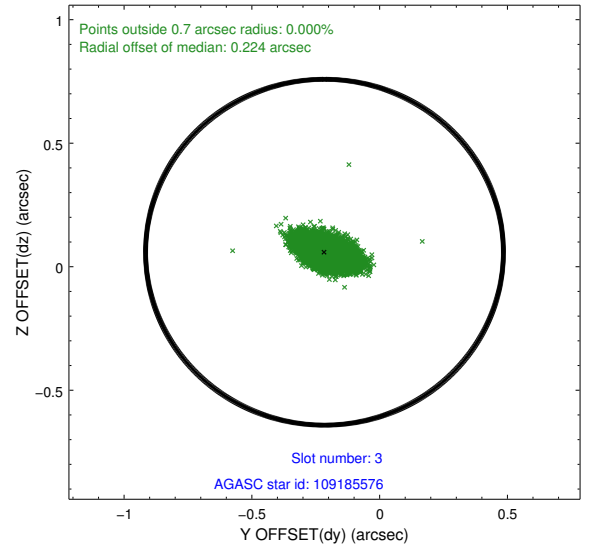
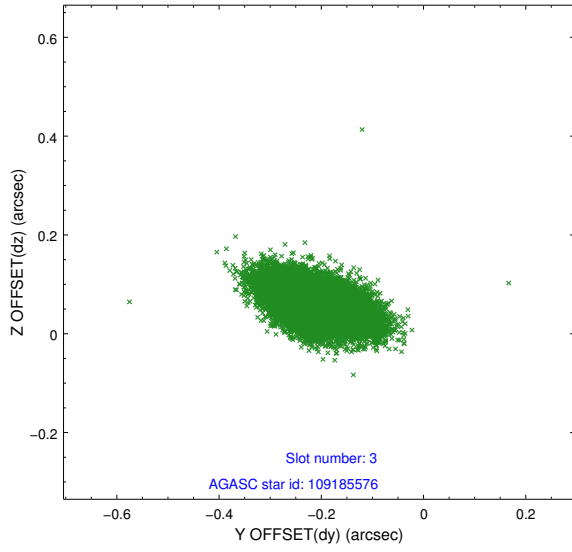


### Slot Statistics

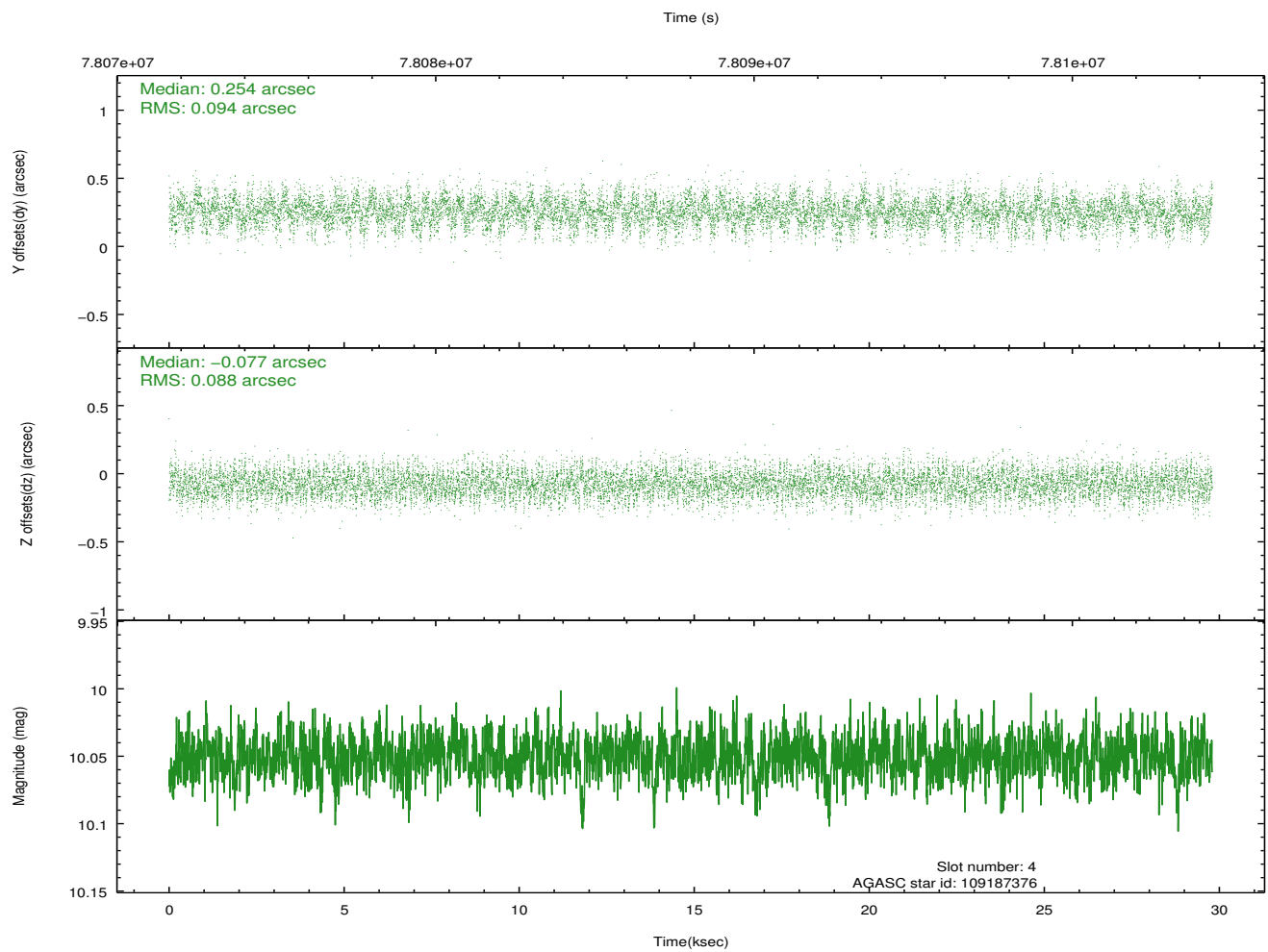
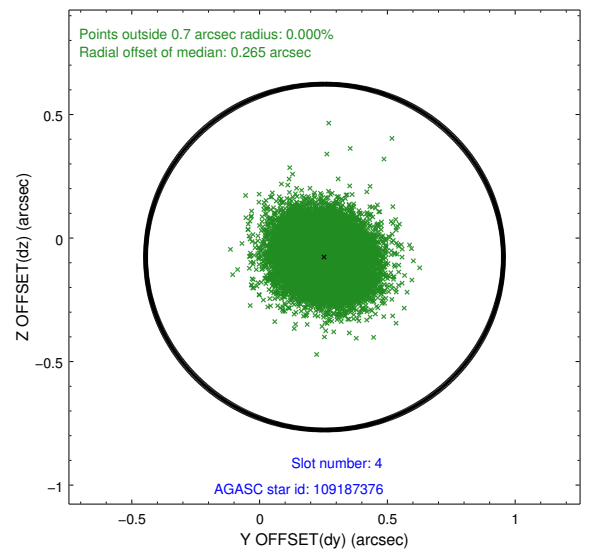
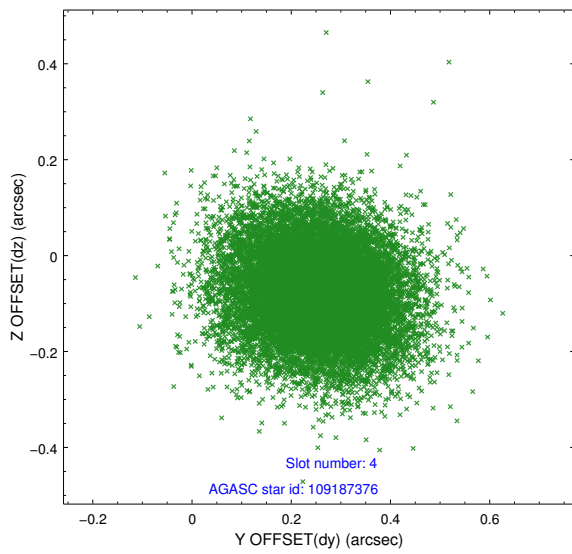
slot	status	id	mag	n_pts	med_dy	med_dz	dr1	dr2	ra	dec	mean_y	mean_z
0	FID	ACIS-I-2	7.15	7265	-0.031	-0.053	0.011	0.024	0.000000	0.000000	-755.38	-835.67
1	FID	ACIS-I-4	7.18	7265	-0.054	0.041	0.008	0.014	0.000000	0.000000	2158.63	1070.55
2	FID	ACIS-I-5	7.23	7268	-0.016	0.081	0.011	0.020	0.000000	0.000000	-1809.09	1068.53
3	GUIDE	109185576	7.17	14533	-0.216	0.059	0.065	0.114	152.897284	12.036426	-1785.40	2236.58
4	GUIDE	109187376	10.05	14524	0.254	-0.077	0.137	0.220	152.003412	11.157499	2280.35	386.81
5	GUIDE	109190696	9.99	14530	0.178	-0.070	0.111	0.181	152.031484	11.280852	1829.72	325.29
6	GUIDE	109183984	9.59	14524	-0.161	0.028	0.086	0.140	152.338747	12.246473	-1806.40	130.35
7	GUIDE	109192064	8.46	14527	-0.057	0.058	0.079	0.128	152.614248	11.575676	117.70	1882.79

## 2.4 Star Slots

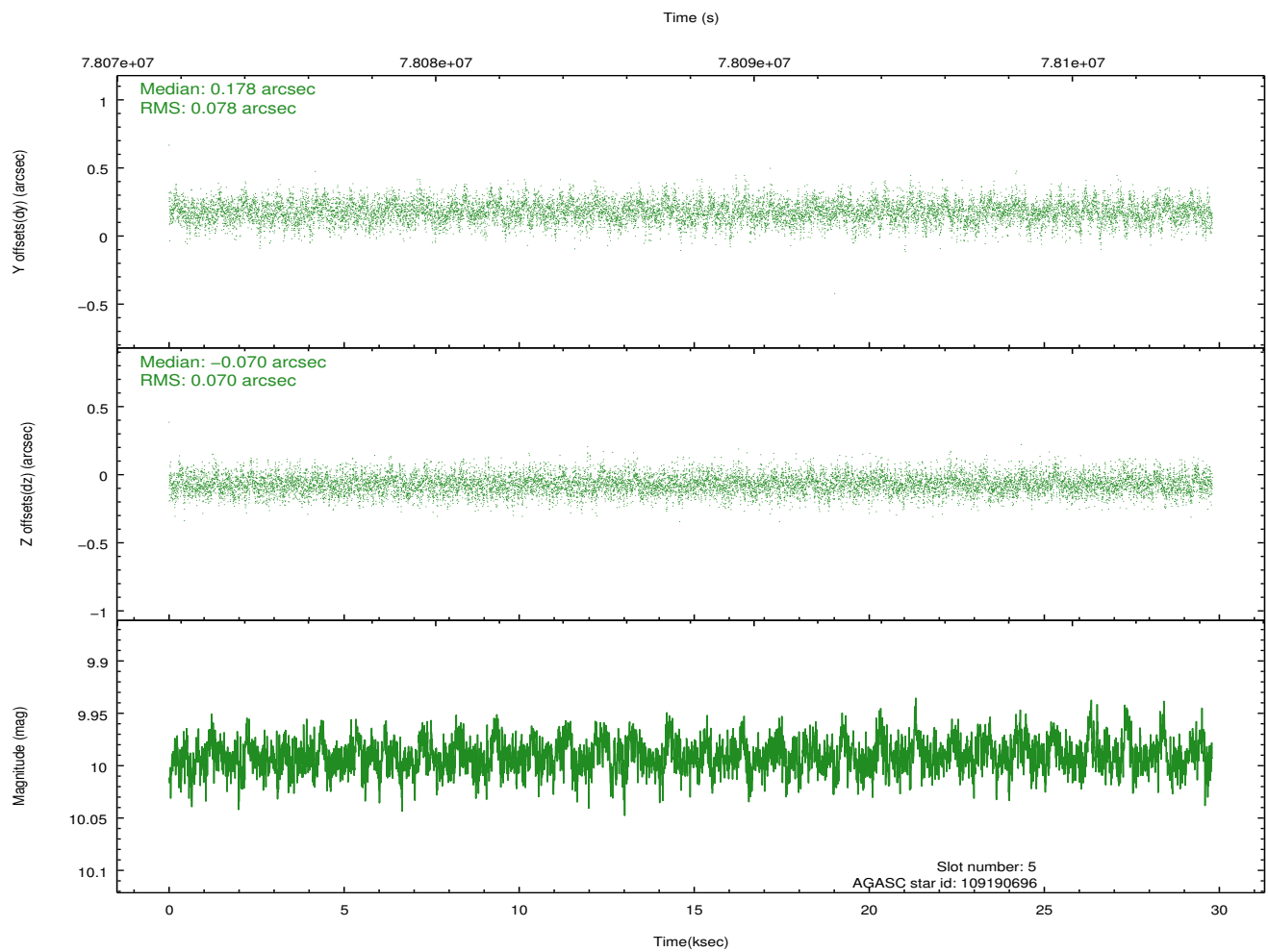
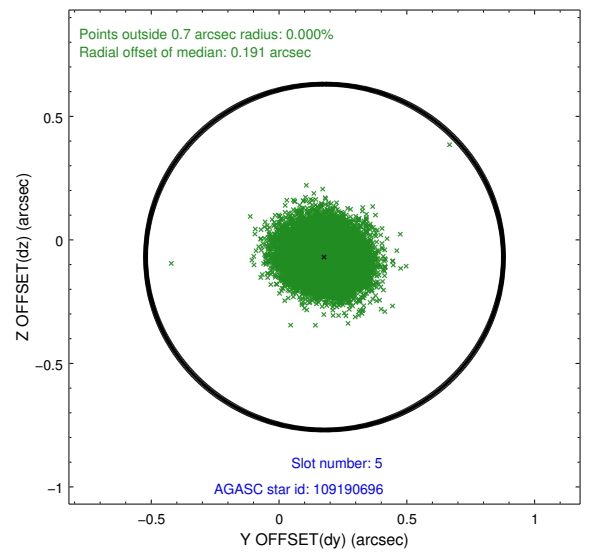
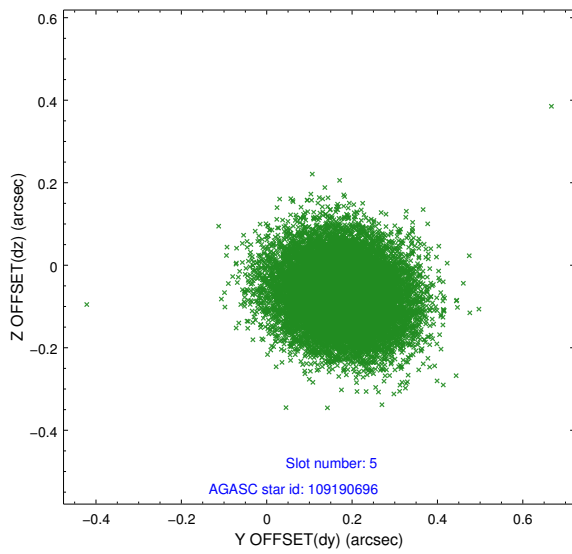
### 2.4.1 Slot 3



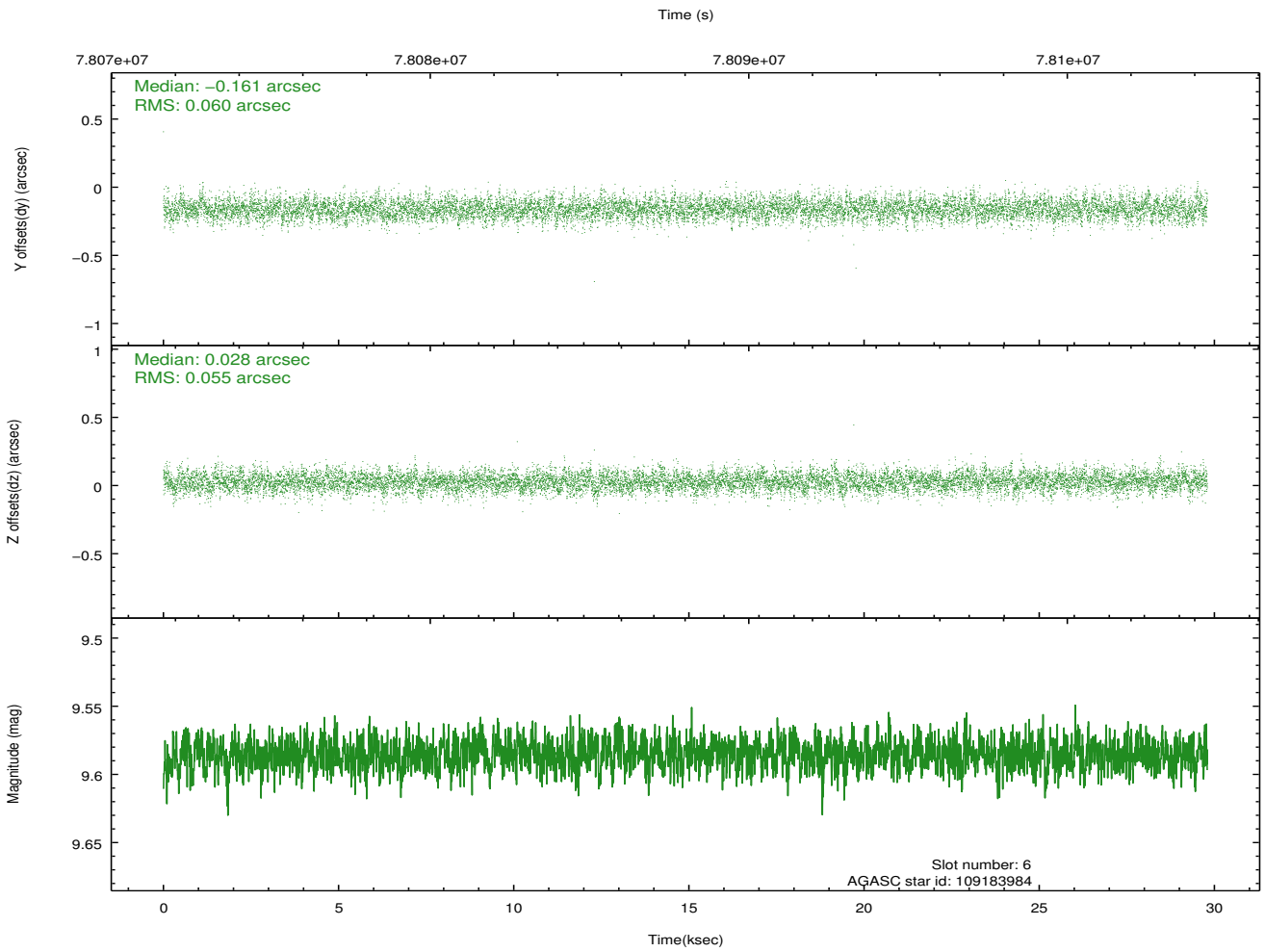
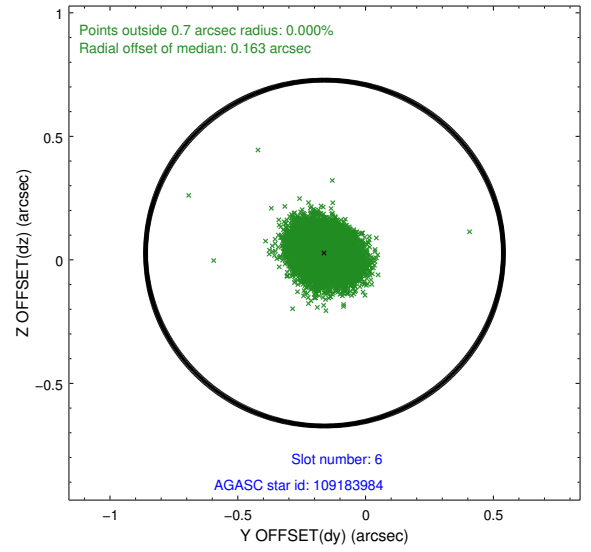
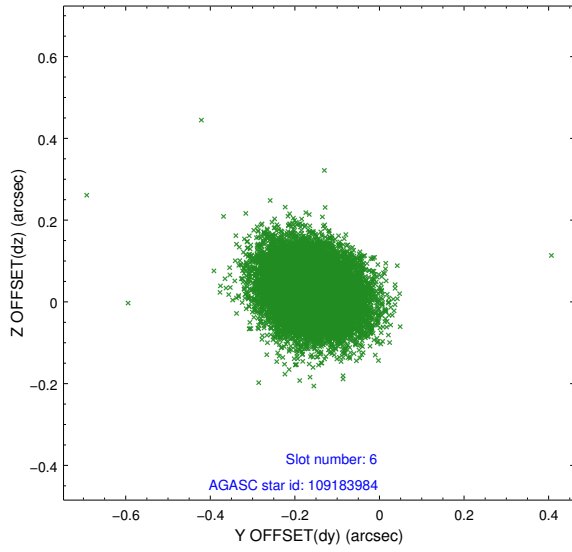
## 2.4.2 Slot 4



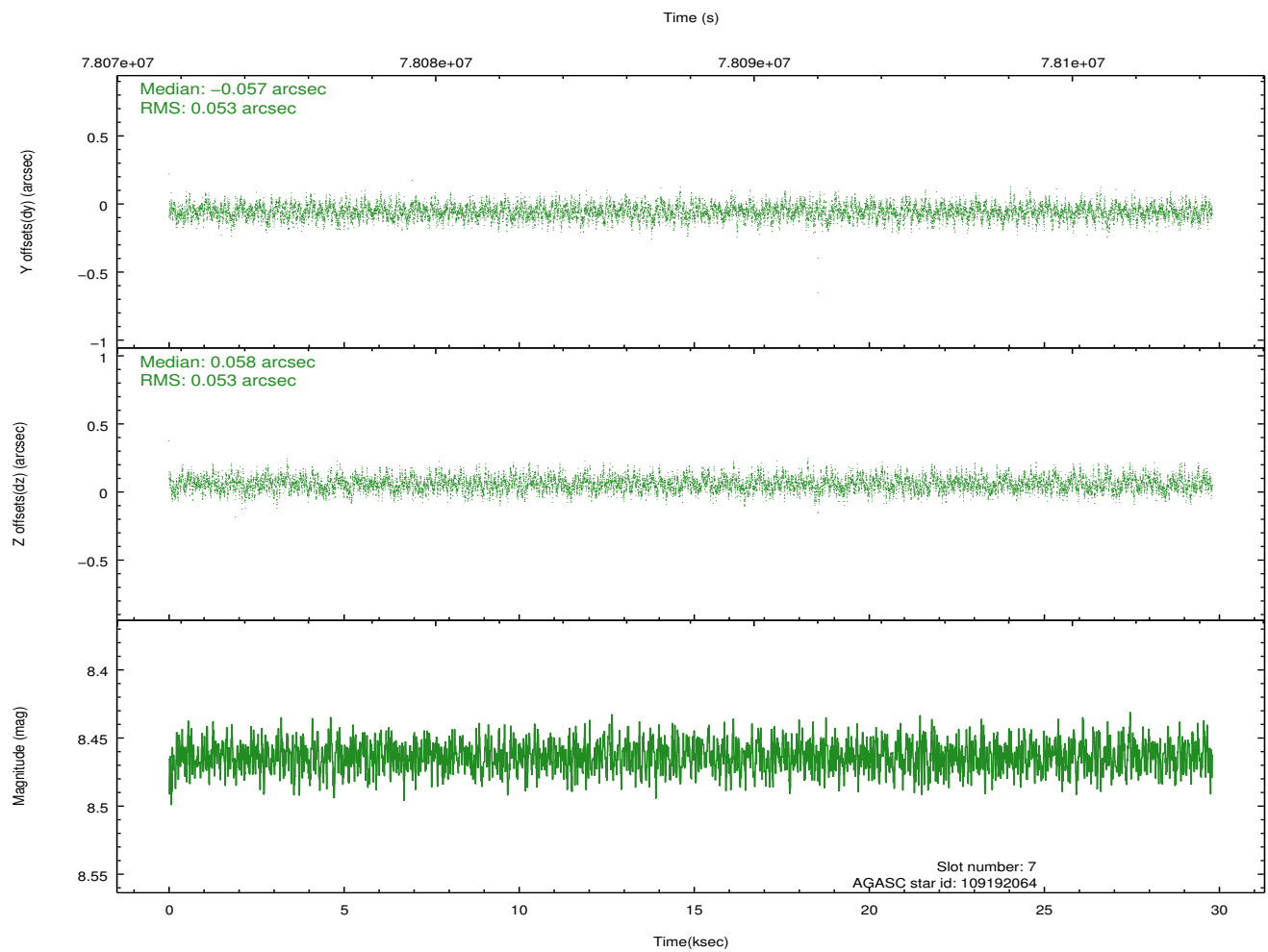
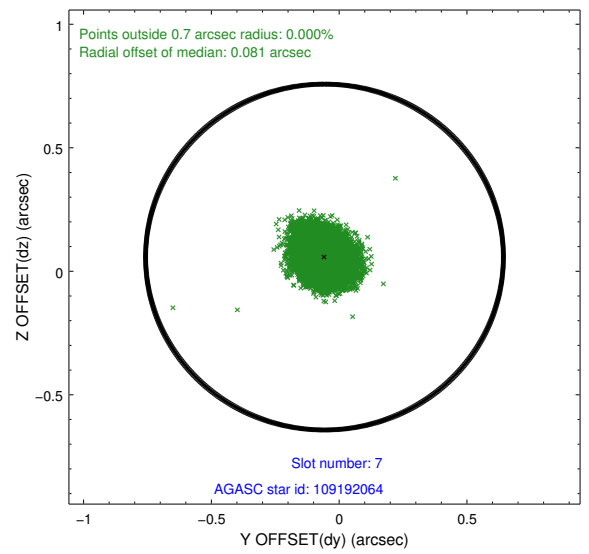
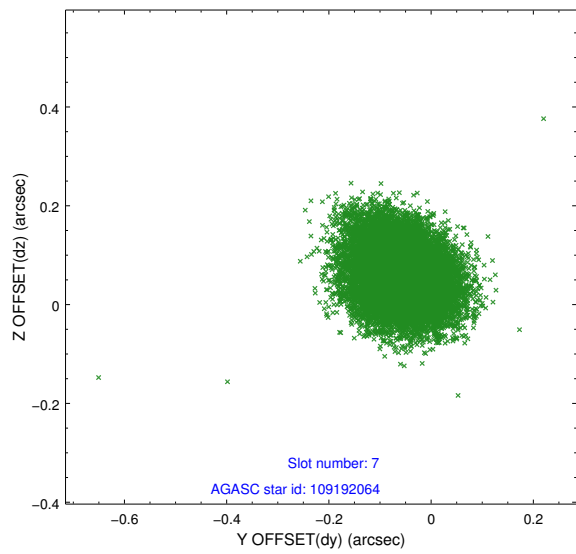
### 2.4.3 Slot 5



### 2.4.4 Slot 6

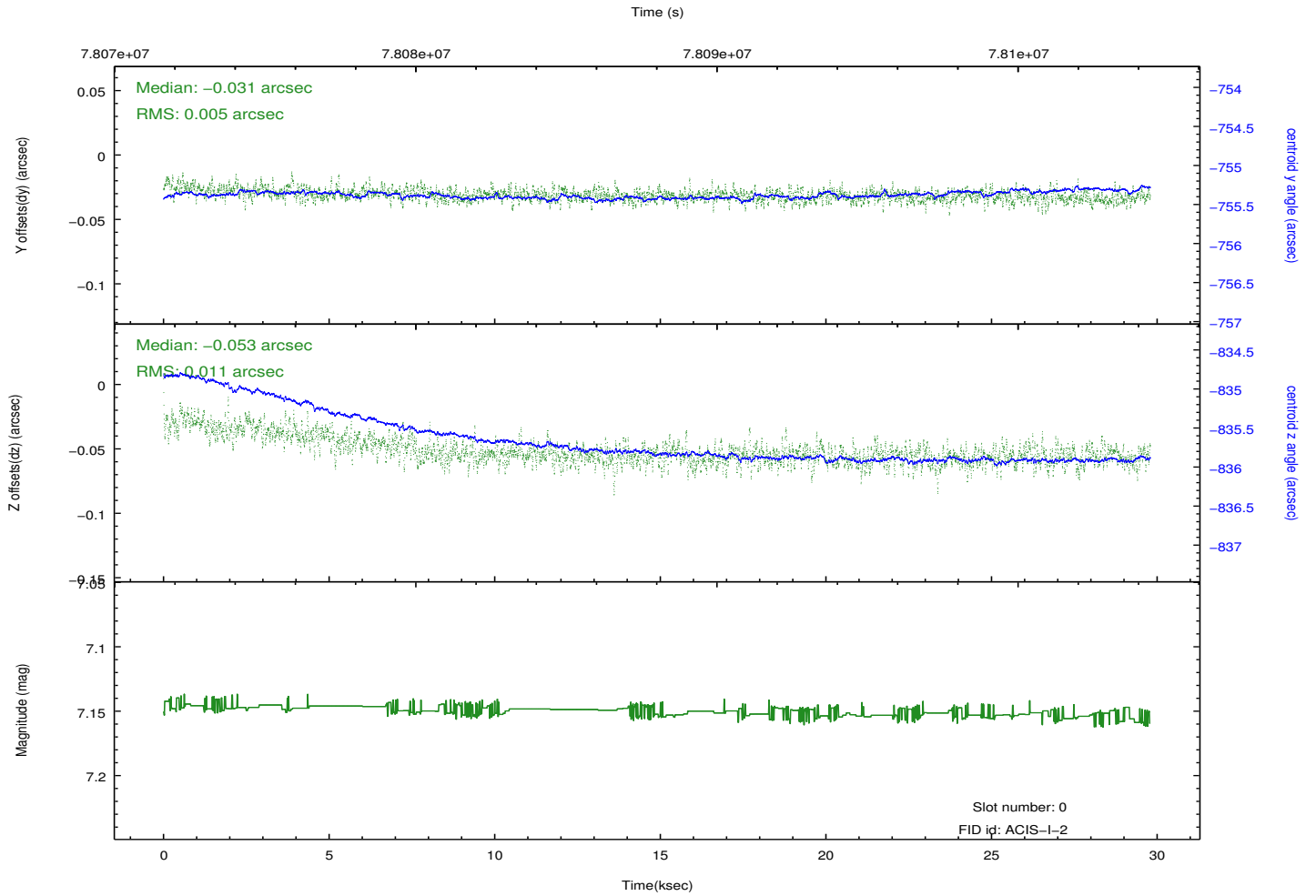
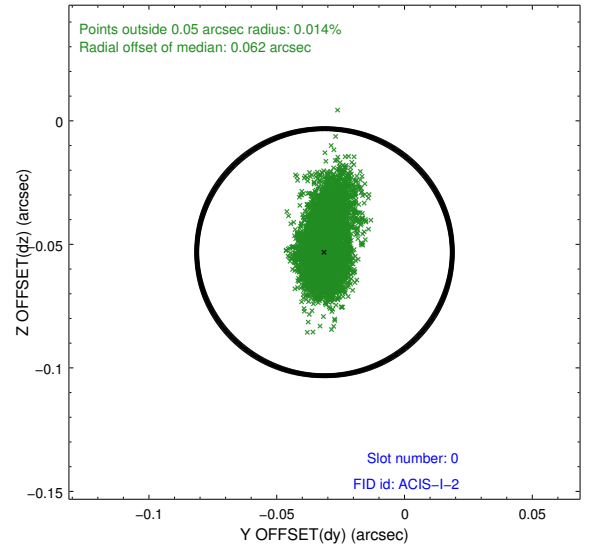
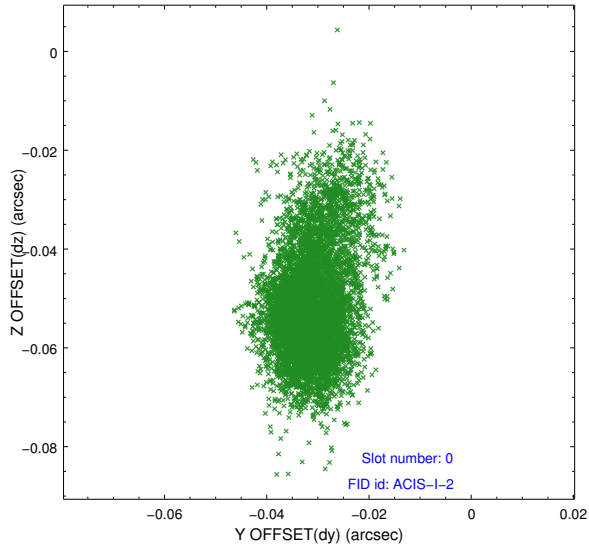


## 2.4.5 Slot 7

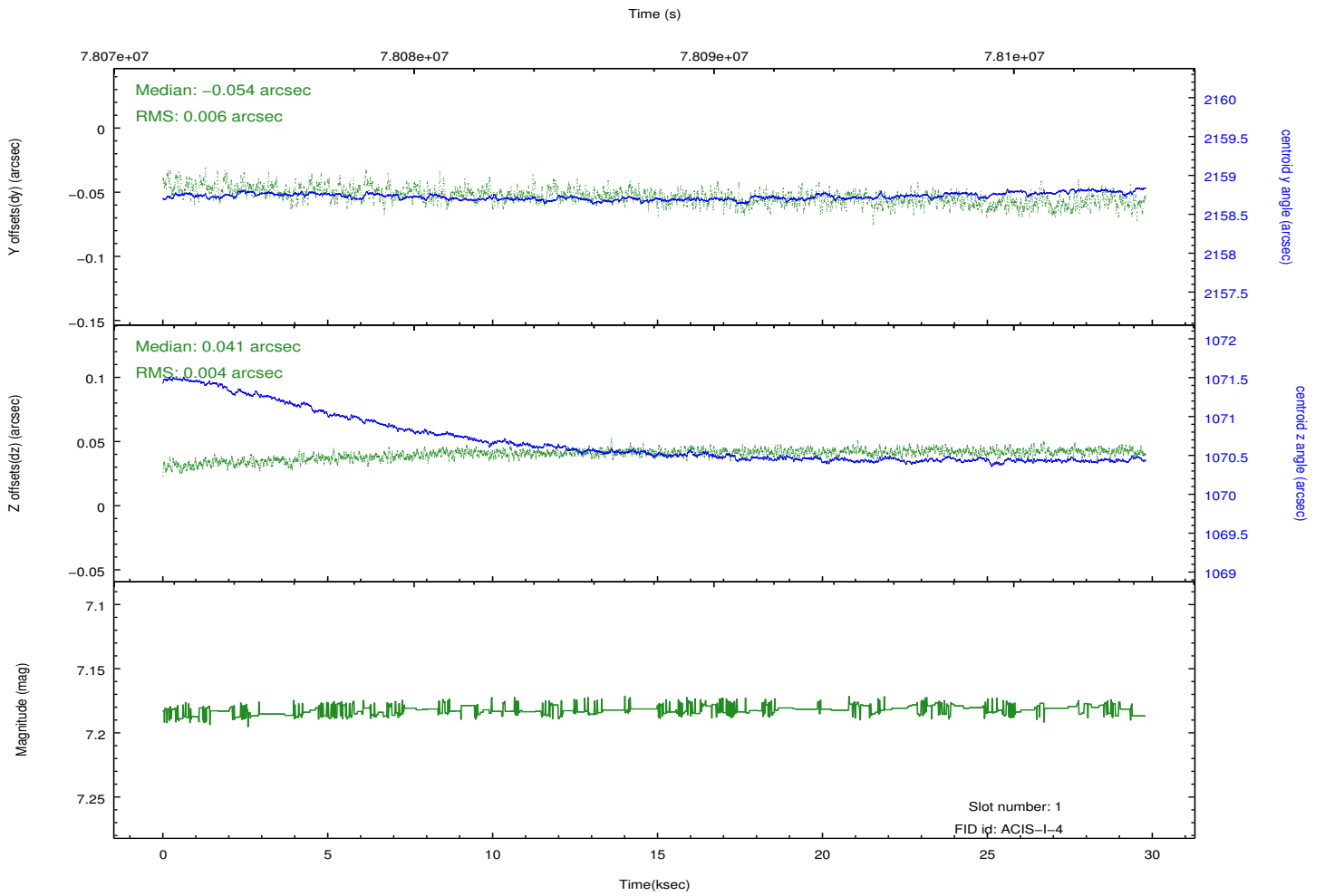
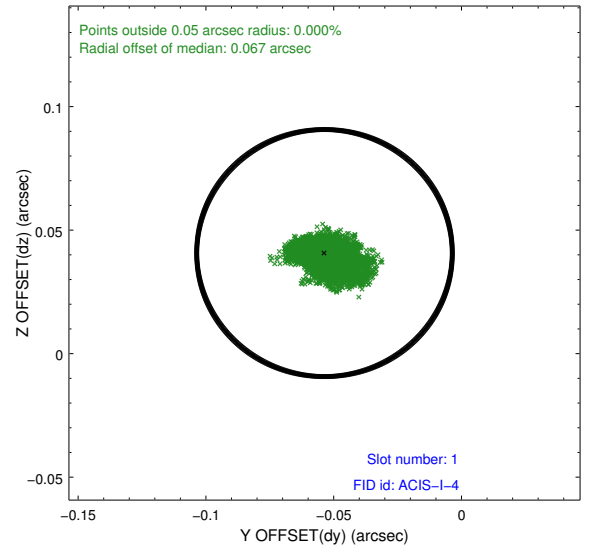
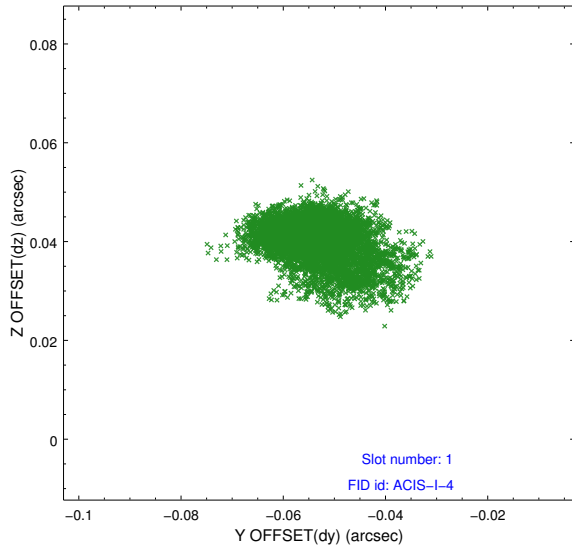


## 2.5 FID Slots

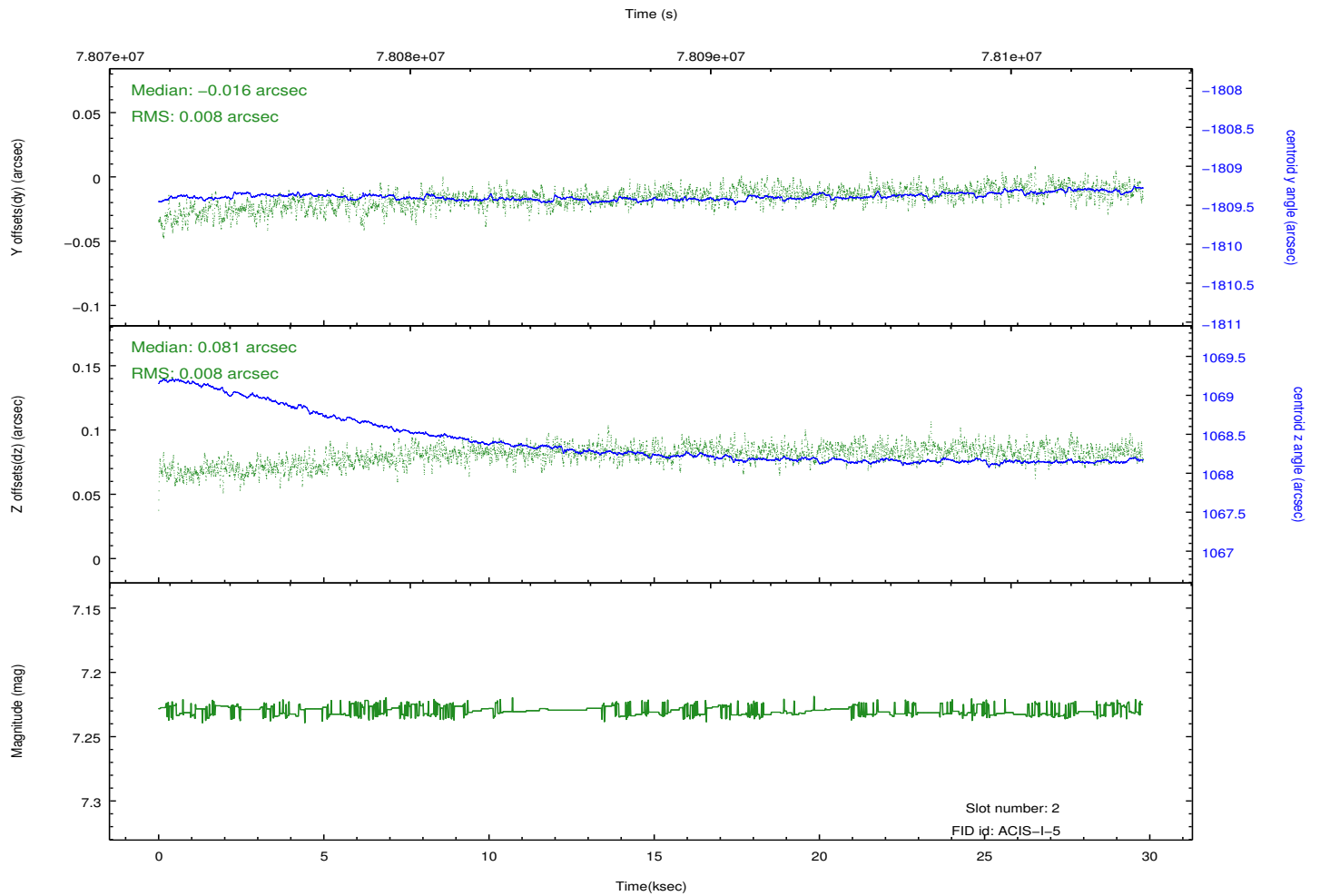
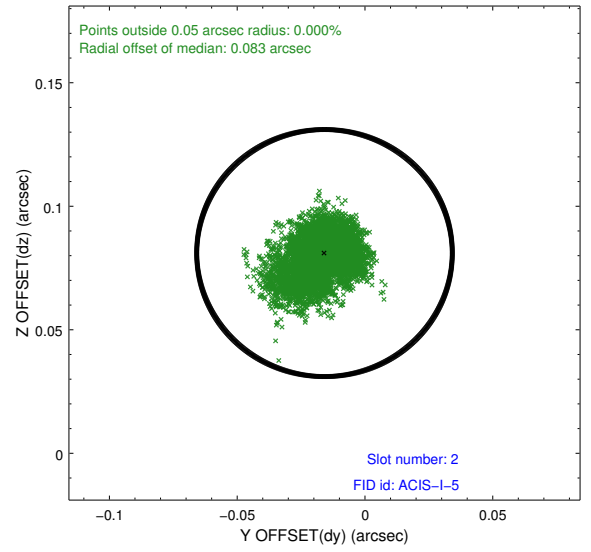
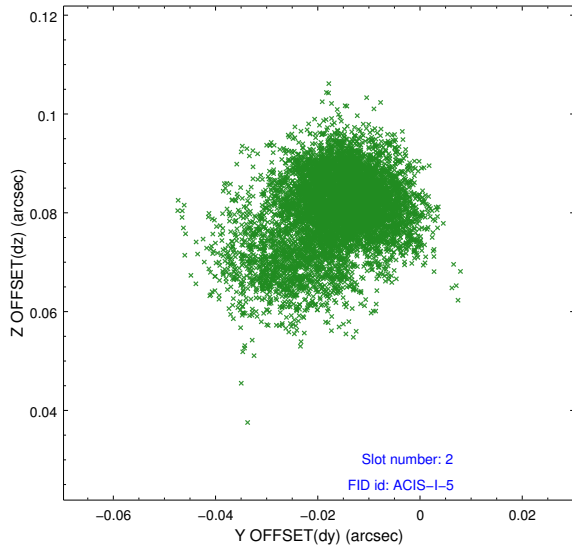
### 2.5.1 Slot 0



## 2.5.2 Slot 1



### 2.5.3 Slot 2



## A Summary

### A.1 Status

V&V Scientist	Jen Lauer
V&V Date (YYYY-MM-DD)	2012.08.31
V&V Edition	1
V&V Disposition and Status	OK
V&V Charge Time	29.792

### A.2 Comments