

# V&V Reference Report

## L2 ASCDS Version : 8.4.4

Observation 10466 - L2 Version 2  
Chandra X-Ray Center

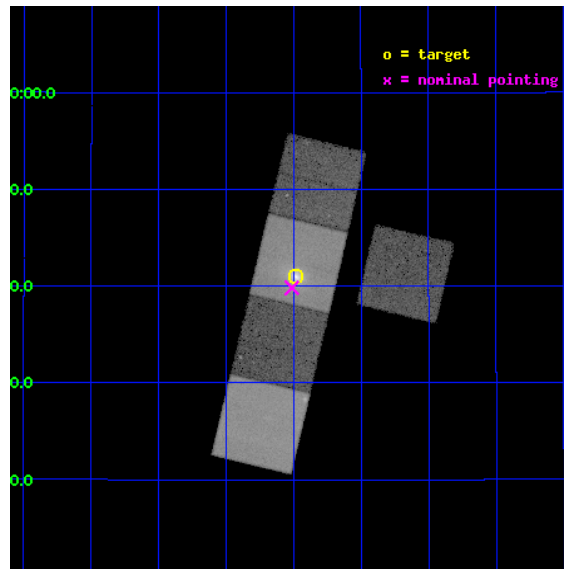
L2 Processing Date : May 26 2012

## Contents

<b>1</b>	<b>Front</b>	<b>2</b>
<b>2</b>	<b>OBI</b>	<b>3</b>
2.1	OBI . . . . .	3
2.1.1	Images . . . . .	3
2.1.2	Bias . . . . .	3
2.1.3	Parameters . . . . .	4
2.1.4	Events . . . . .	4
2.2	Compared Parameters . . . . .	5
2.3	Aspect . . . . .	6
2.4	Star Slots . . . . .	9
2.4.1	Slot 3 . . . . .	9
2.4.2	Slot 4 . . . . .	10
2.4.3	Slot 5 . . . . .	11
2.4.4	Slot 6 . . . . .	12
2.4.5	Slot 7 . . . . .	13
2.5	FID Slots . . . . .	14
2.5.1	Slot 0 . . . . .	14
2.5.2	Slot 1 . . . . .	15
2.5.3	Slot 2 . . . . .	16
<b>A</b>	<b>Summary</b>	<b>17</b>
A.1	Status . . . . .	17
A.2	Comments . . . . .	17

# 1 Front

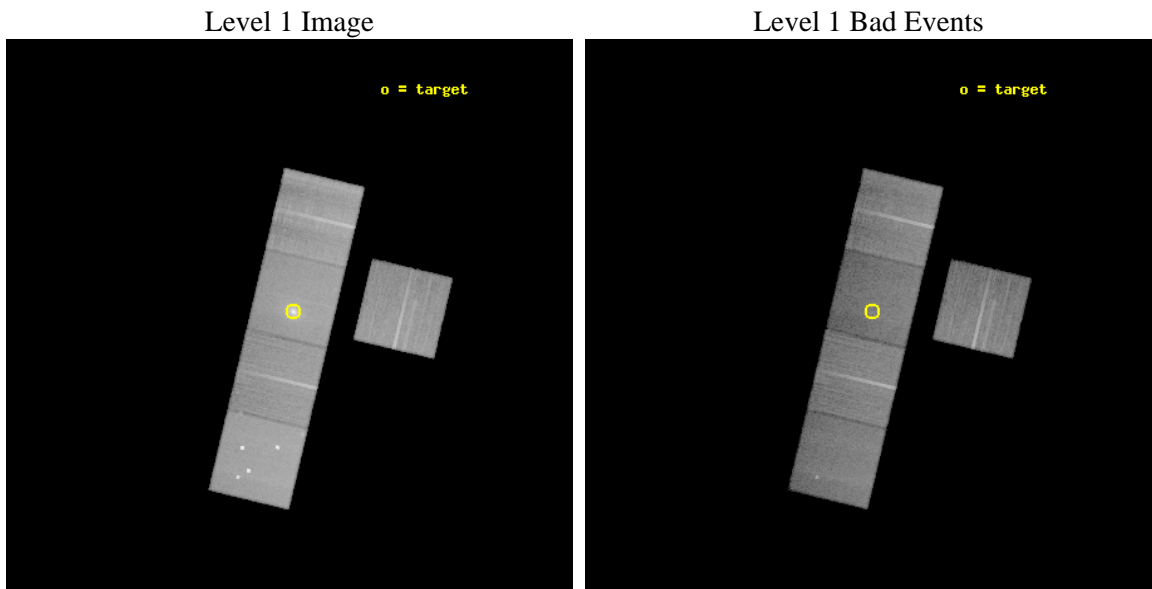
seq_num	800827	Sequence number
obs_id	10466	Observation id
title	Does AGN heating quench star formation in Brightest Cluster Galaxies?	Proposal title
observer	Dr Helen Russell	Principal investigator
object	RXC J0352.9+1941	Source name
dtcycle	0	&#160
cycle	P	events from which exps? Prim/Second/Both
ra_targ	58.245417	Observer's specified target RA [deg]
dec_targ	19.683333	Observer's specified target Dec [deg]
ra_nom	58.253110437588	Nominal RA [deg]
dec_nom	19.663702115718	Nominal Dec [deg]
roll_nom	283.37192123264	Nominal Roll [deg]
revision	2	Processing version of data
ontime	27562.100211978	Sum of GTIs [s]
livetime	27201.981081785	Livetime [s]
ontime3	27558.959231615	Sum of GTIs [s]
ontime5	27562.100211978	Sum of GTIs [s]
ontime6	27562.100211978	Sum of GTIs [s]
ontime7	27562.100211978	Sum of GTIs [s]
ontime8	27558.959221542	Sum of GTIs [s]
l2events	368067	Number of level 2 events



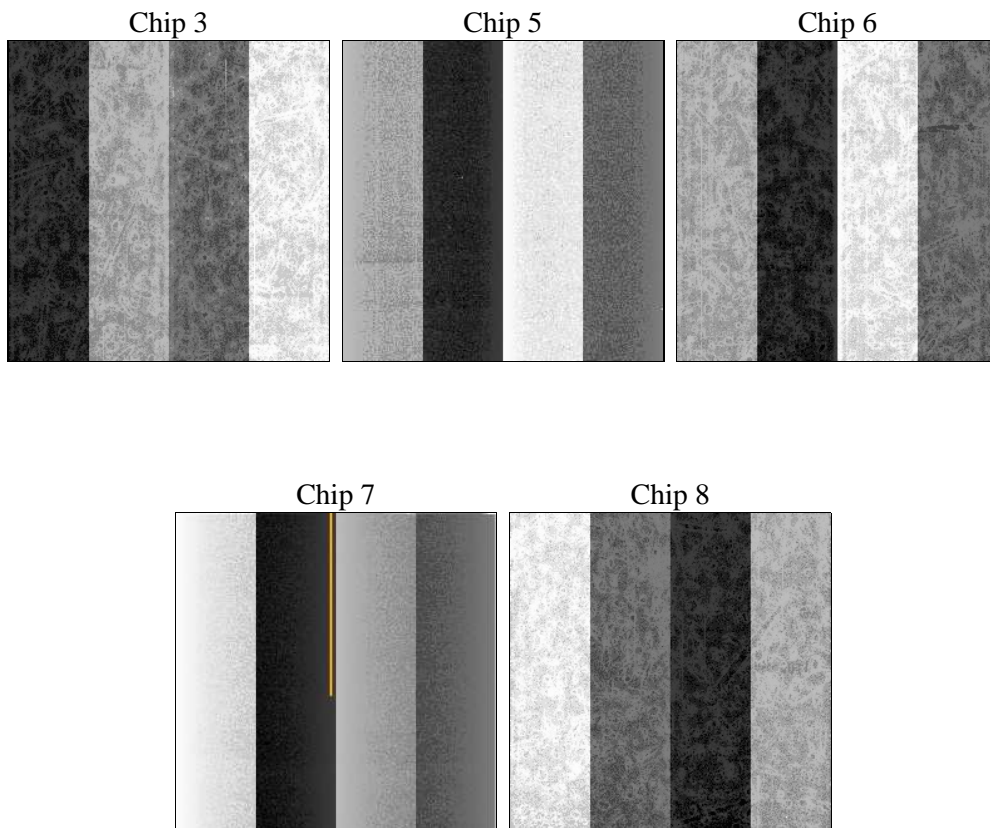
## 2 OBI

### 2.1 OBI

#### 2.1.1 Images



#### 2.1.2 Bias



### 2.1.3 Parameters

obi_num	0	Obi number	sched_exp_time	27500.000000	[s] Scheduled observation exposure time
ascdsver	8.4.4	Processing system revision	ontime	27562.100211978	Sum of GTIs [s]
caldsver	4.4.9	&#160	ontime3	27558.959231615	Sum of GTIs [s]
date	2012-05-26T05:34:35	Date and time of file creation	ontime5	27562.100211978	Sum of GTIs [s]
revision	2	Processing version of data	ontime6	27562.100211978	Sum of GTIs [s]
			ontime7	27562.100211978	Sum of GTIs [s]
			ontime8	27558.959221542	Sum of GTIs [s]
			l1events	1379718	Number of level 1 events

### 2.1.4 Events

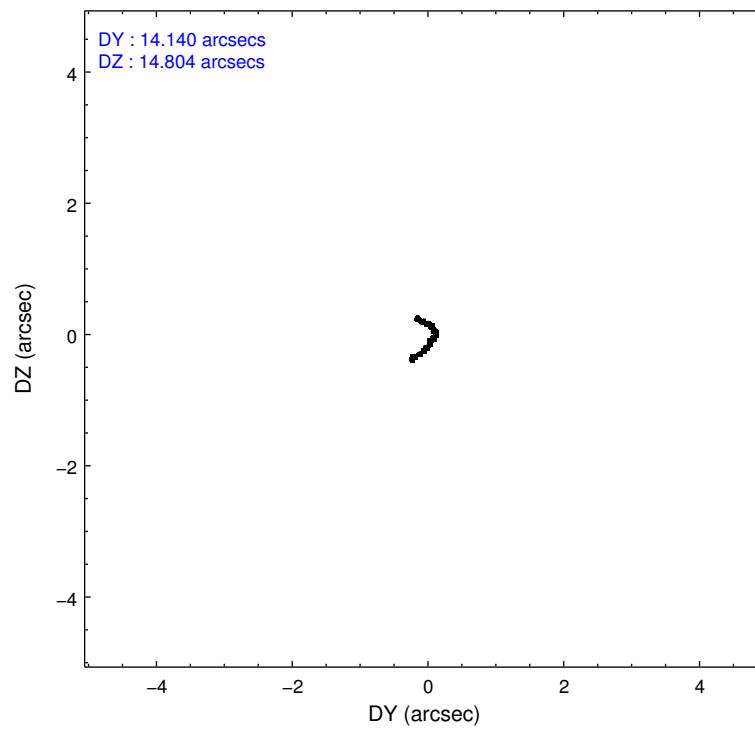
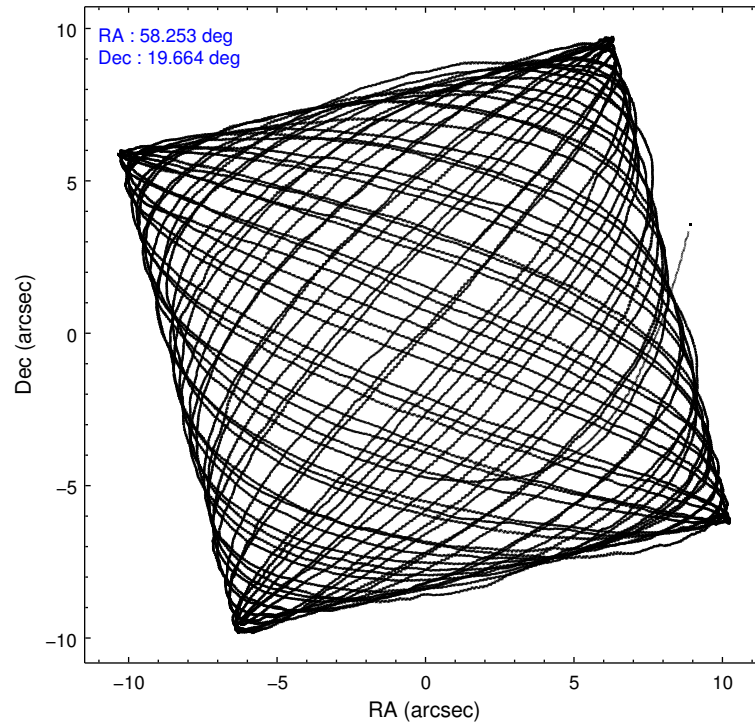
	ccd 3	ccd 5	ccd 6	ccd 7	ccd 8
level 1 events	223800	340884	229628	297072	288334
rejected events	201874	163185	205243	142661	215775
rejected %	90%	47%	89%	48%	74%

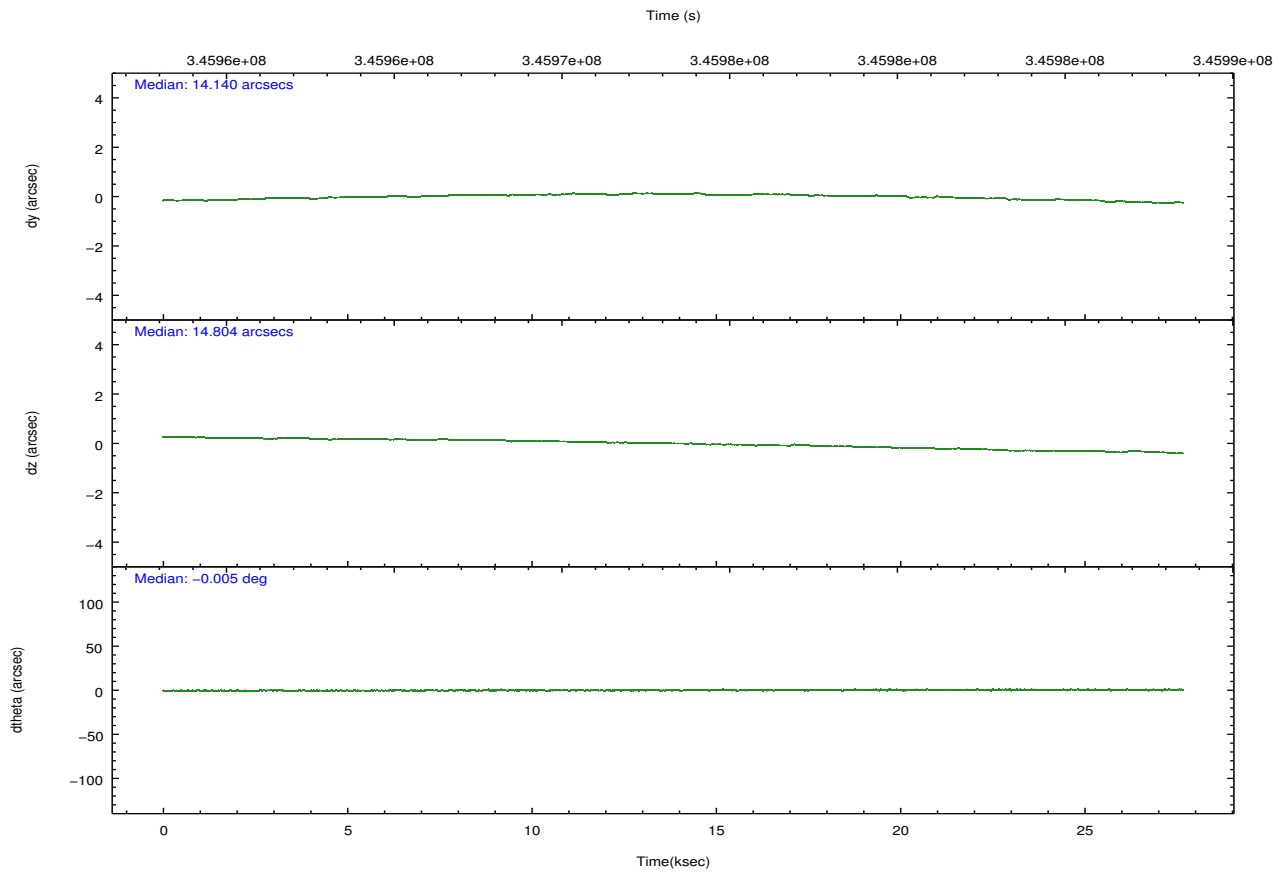
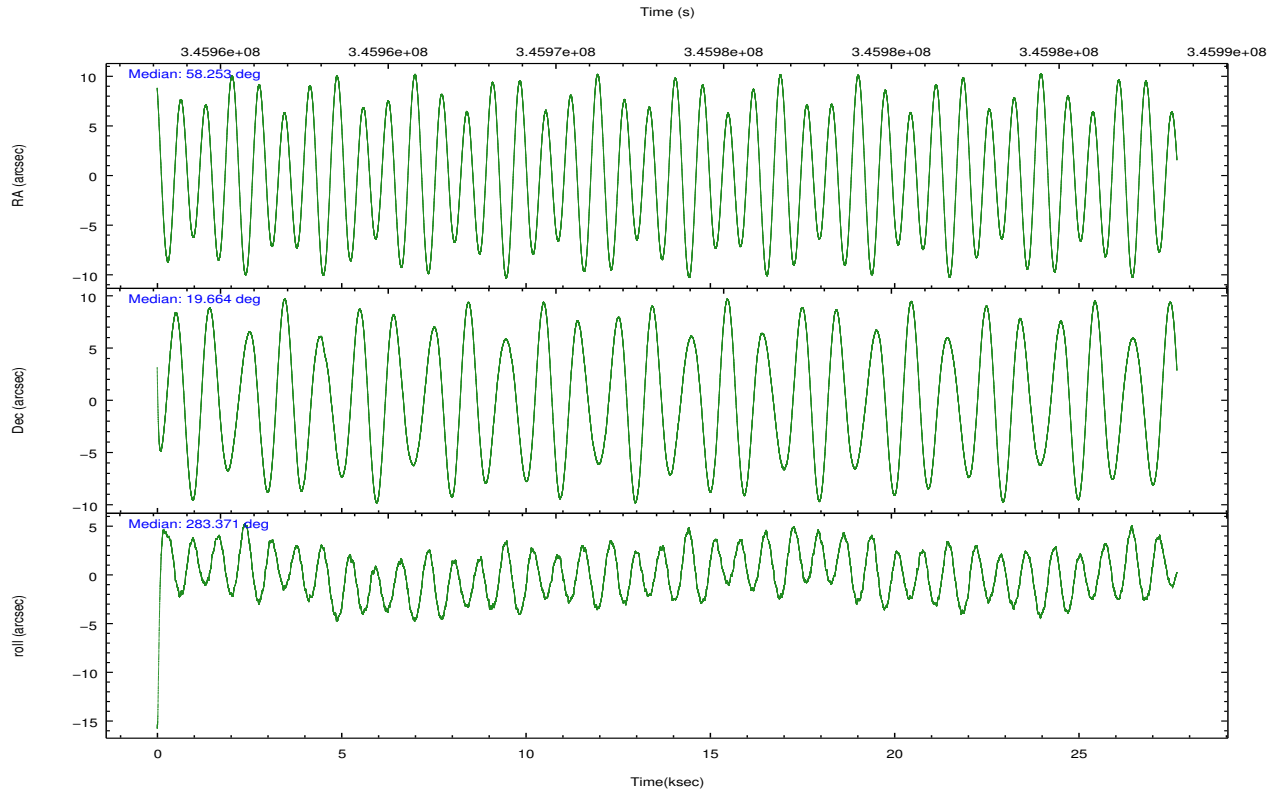
	ccd 3	ccd 5	ccd 6	ccd 7	ccd 8
grade 0 events	7711	31677	8724	21881	21613
	3%	9%	3%	7%	7%
grade 1 events	136	584	113	380	240
	0%	0%	0%	0%	0%
grade 2 events	4871	49139	5378	33611	16911
	2%	14%	2%	11%	5%
grade 3 events	2494	6864	2574	15204	7840
	1%	2%	1%	5%	2%
grade 4 events	2417	6387	2464	15007	7065
	1%	1%	1%	5%	2%
grade 5 events	9447	25567	9449	27656	13565
	4%	7%	4%	9%	4%
grade 6 events	4435	83663	5254	68741	19136
	1%	24%	2%	23%	6%
grade 7 events	192289	137003	195672	114592	201964
	85%	40%	85%	38%	70%

## 2.2 Compared Parameters

Parameter	Planned	Actual	Parameter	Planned	Actual
Instrument	ACIS	ACIS	Obspar format version number	7	7
Detector	ACIS-35678	ACIS-35678	Obspar file type	PREDICTED	ACTUAL
Grating	NONE	NONE	Obspar update status	NONE	UPDATED
Data mode	VFAINT	VFAINT	CCD I0 on	N	N
Observation mode	POINTING	POINTING	CCD I1 on	N	N
[deg] Pointing RA	58.232879	58.25311043758781	CCD I2 on	N	N
[deg] Pointing Dec	19.683301	19.66370211571777	CCD I3 on	O2	Y
[deg] Pointing Roll	283.222115	283.3719212326375	CCD S0 on	N	N
[mm] SIM focus pos	-0.684267	-0.6828225247311905	CCD S1 on	Y	Y
[mm] SIM defocus	0	0.001444936568705701	CCD S2 on	Y	Y
[mm] SIM translation stage pos	-190.132523	-190.1400660498719	CCD S3 on	Y	Y
[mm] SIM translation stage offset	0	0.00754346686406393	CCD S4 on	O1	Y
[s] Observation start time (MET)	345959645.184000	345958700.47602	CCD S5 on	N	N
Observation start date	2008-12-18T03:53:00	2008-12-18T03:38:20	Number of optional ACIS chips dropped	0	0
[s] Observation end time (MET)	345987145.184000	345987848.40247	On-chip summing requested	N	N
Observation end date	2008-12-18T11:31:20	2008-12-18T11:44:08	Subarray requested	NONE	NONE
Read mode	TIMED	TIMED	Alternating exposures requested	N	N
			[s] Primary exposure time	0.000000	3.1

## 2.3 Aspect



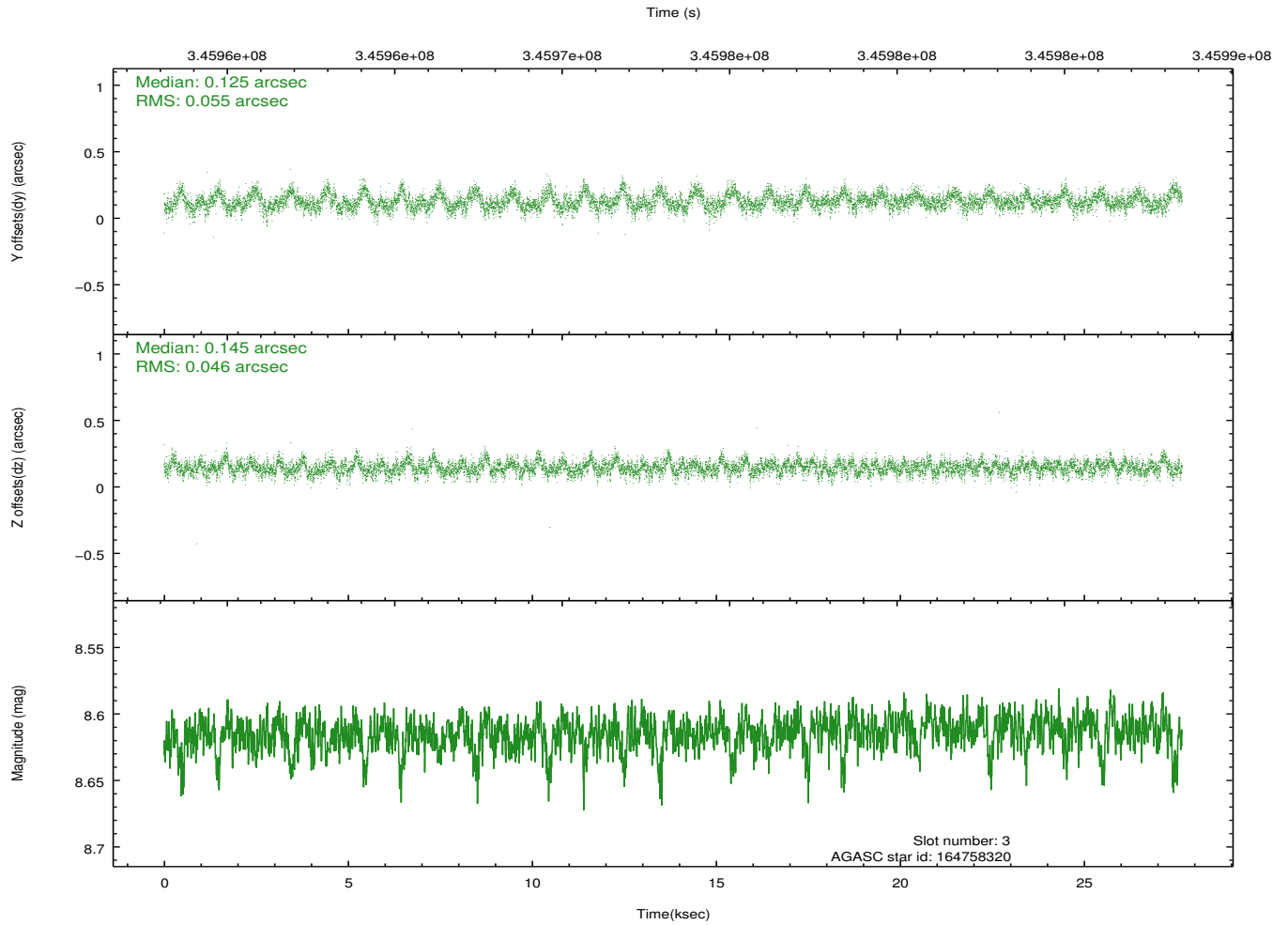
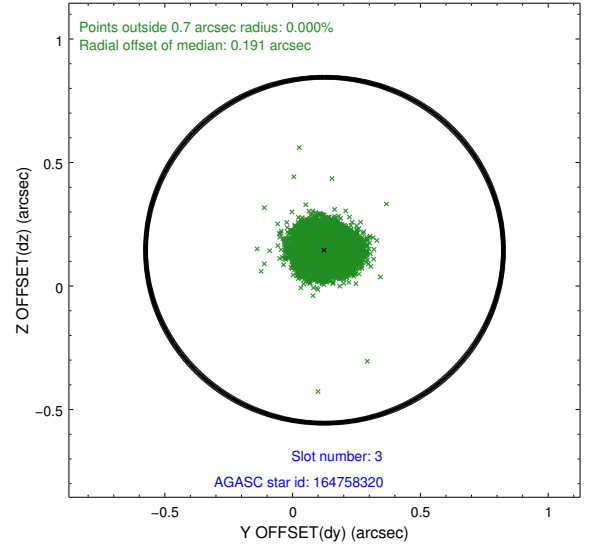
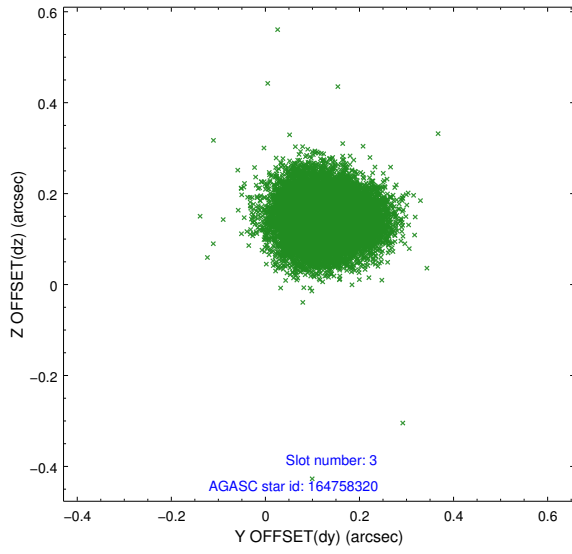


### Slot Statistics

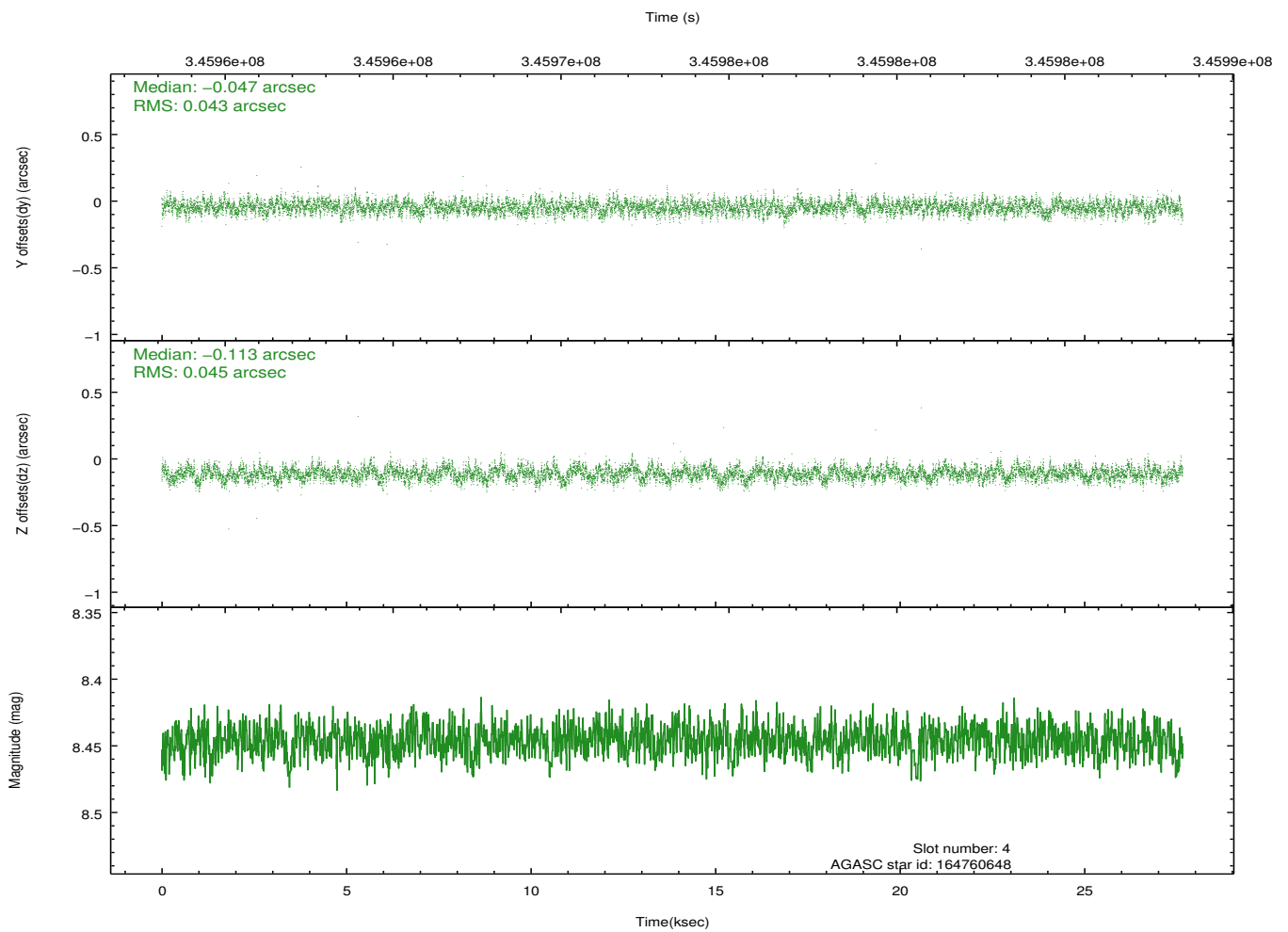
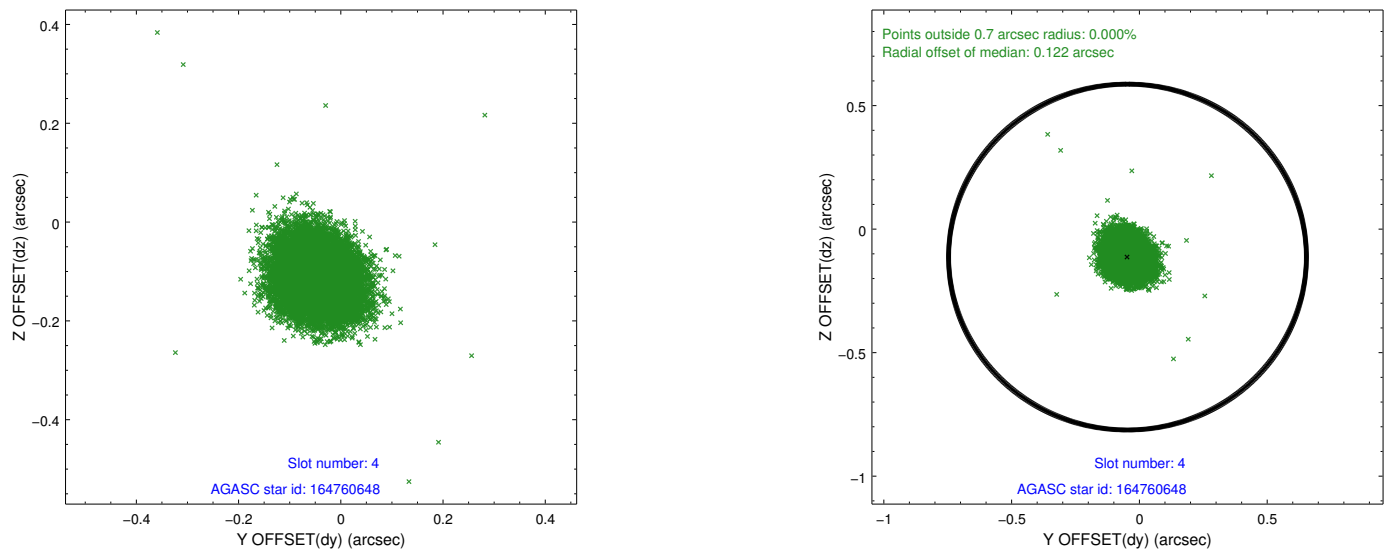
slot	status	id	mag	n_pts	med_dy	med_dz	dr1	dr2	ra	dec	mean_y	mean_z
0	FID	ACIS-S-2	6.88	6748	-0.072	-0.036	0.008	0.015	0.000000	0.000000	-767.12	-1736.19
1	FID	ACIS-S-4	6.97	6748	0.208	0.044	0.010	0.021	0.000000	0.000000	2146.37	172.30
2	FID	ACIS-S-5	6.99	6748	-0.166	0.001	0.009	0.014	0.000000	0.000000	-1819.96	165.99
3	GUIDE	164758320	8.61	13491	0.125	0.145	0.076	0.123	59.037060	19.228375	2213.81	2288.48
4	GUIDE	164760648	8.45	13485	-0.047	-0.113	0.065	0.105	58.750057	20.099402	-1060.74	2045.50
5	GUIDE	164764952	8.14	13488	-0.093	0.055	0.061	0.099	58.152070	19.608175	200.73	-328.44
6	GUIDE	164765360	6.54	13495	-0.240	-0.032	0.060	0.095	58.256784	20.208020	-1820.49	510.62
7	GUIDE	164766168	9.02	13485	0.256	-0.059	0.099	0.160	58.702746	19.181323	2122.77	1142.57

## 2.4 Star Slots

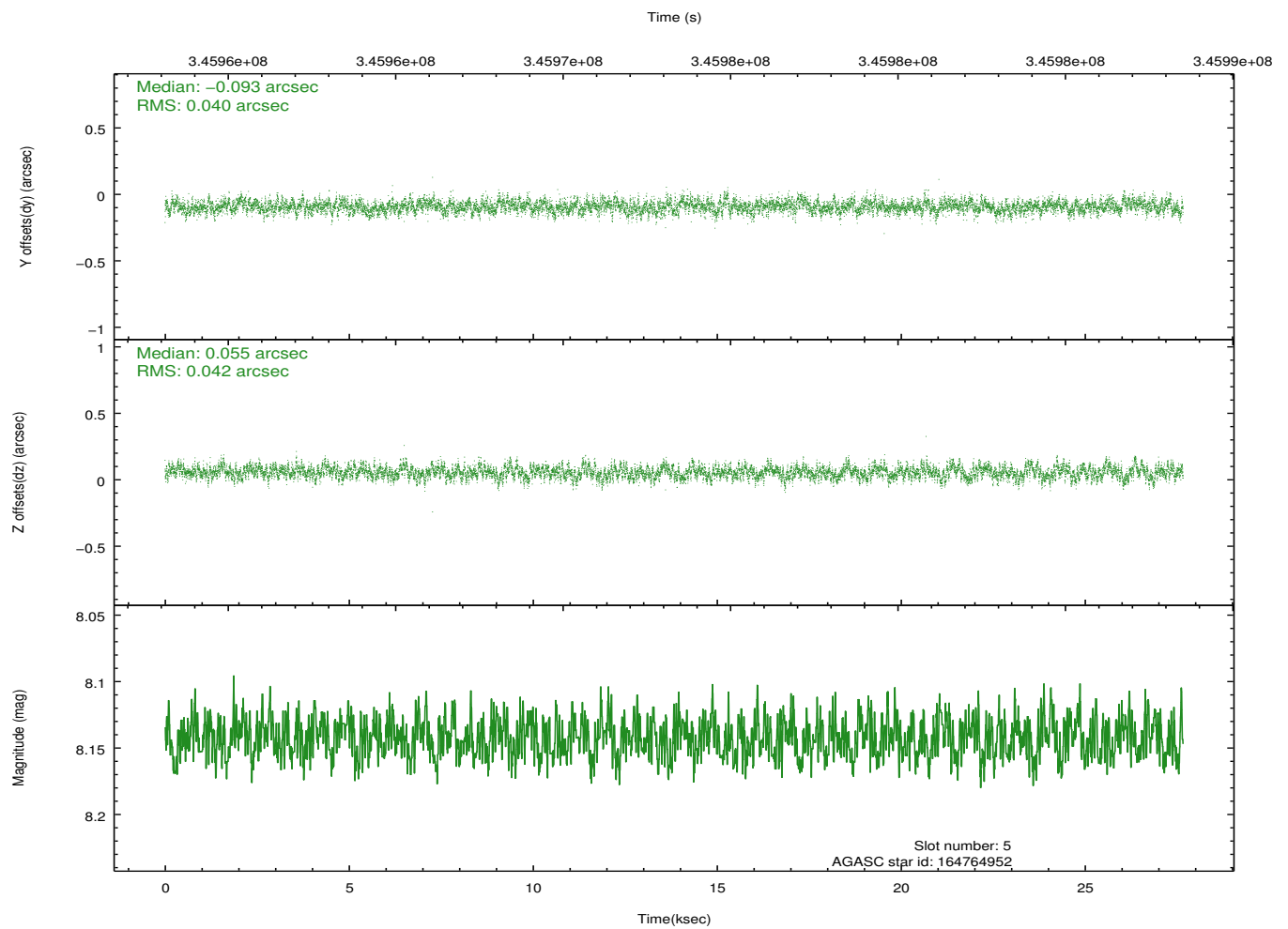
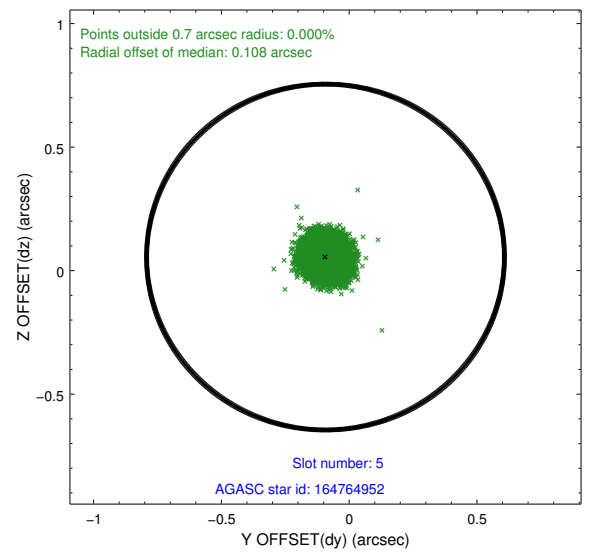
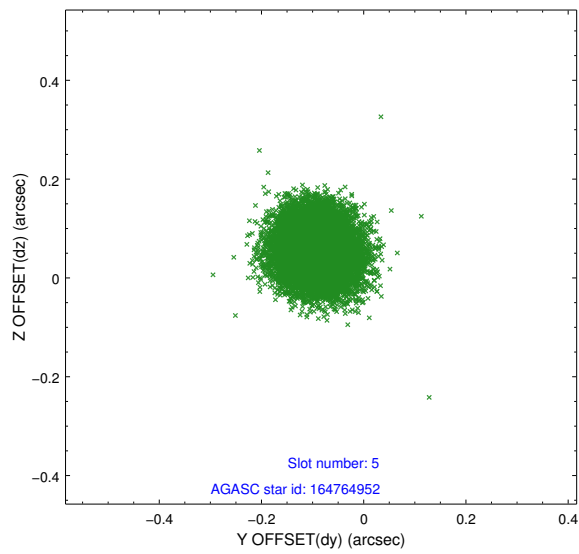
### 2.4.1 Slot 3



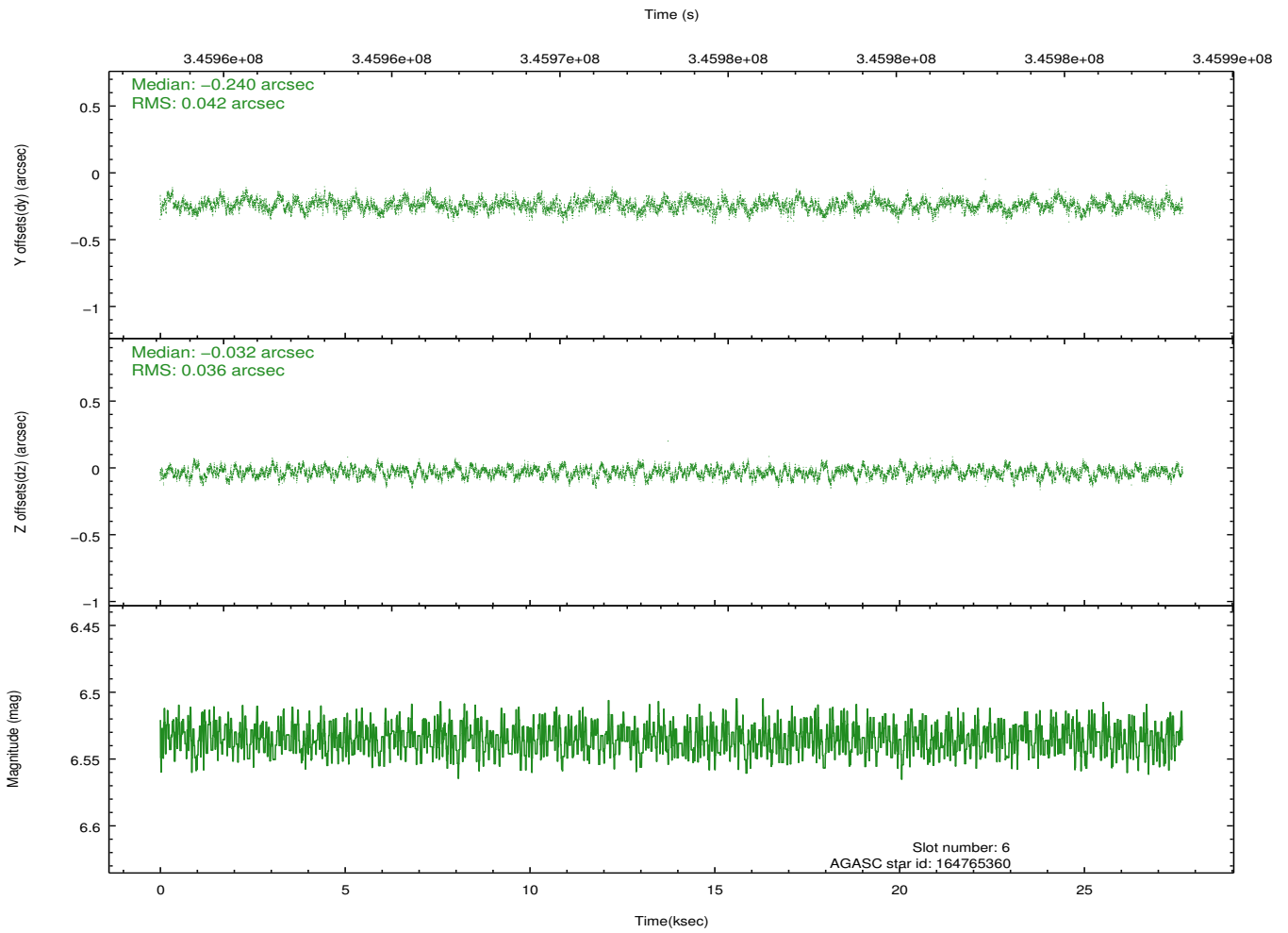
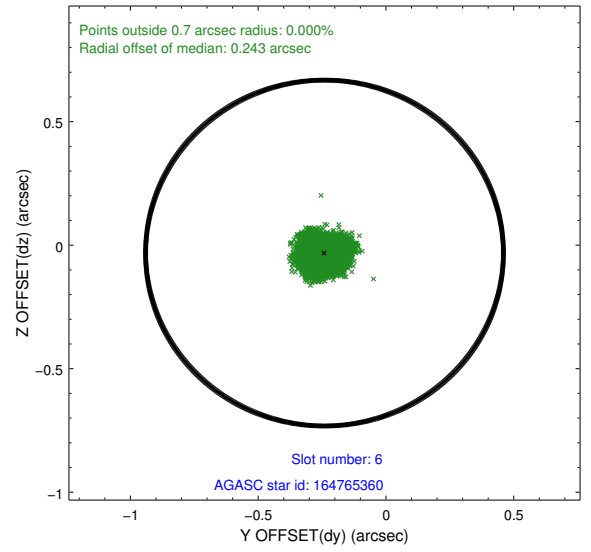
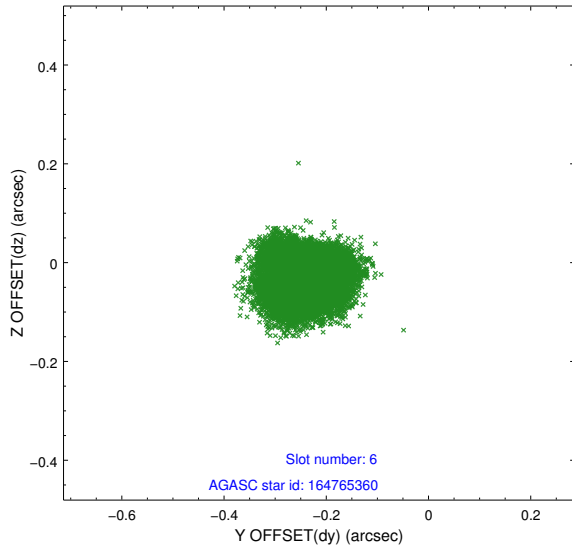
## 2.4.2 Slot 4



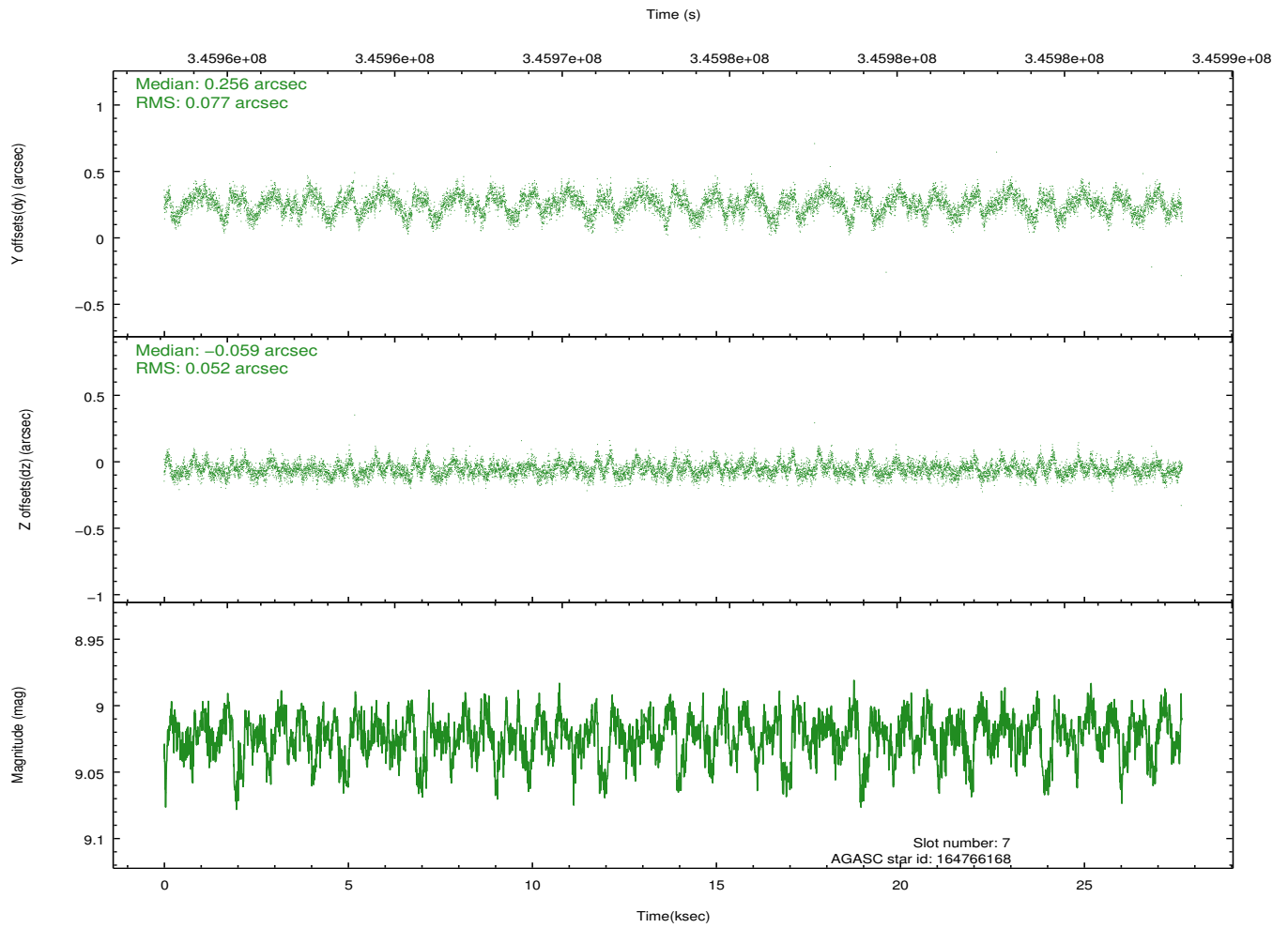
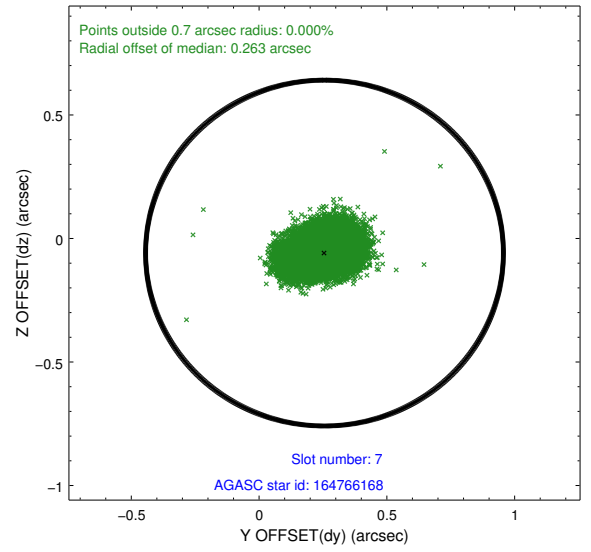
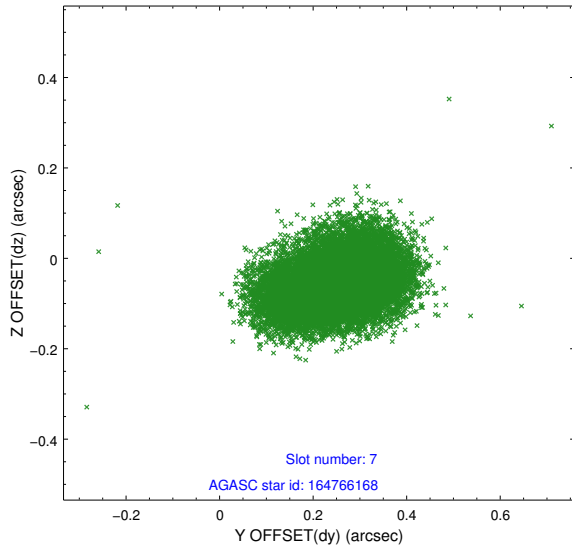
### 2.4.3 Slot 5



## 2.4.4 Slot 6

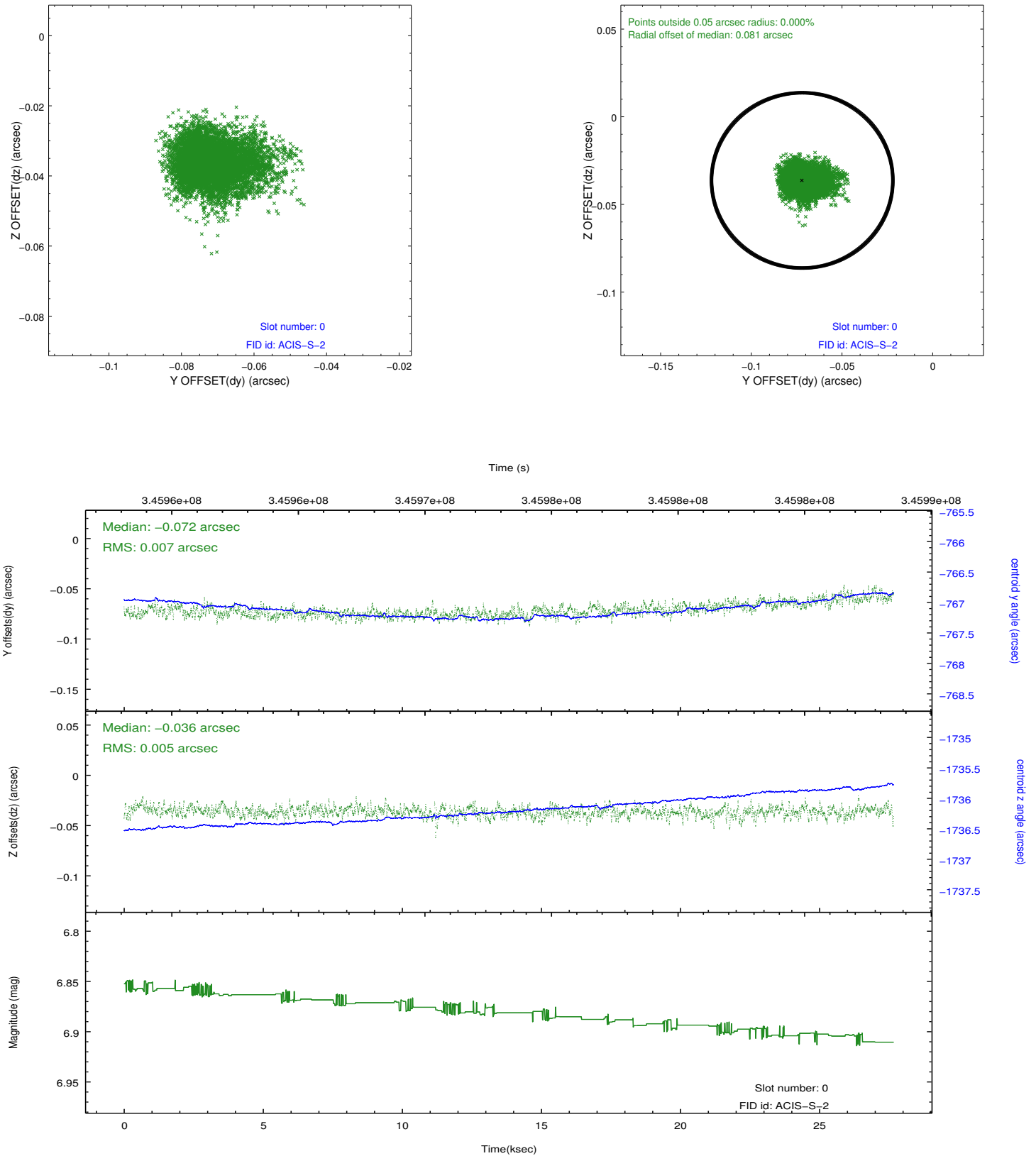


### 2.4.5 Slot 7

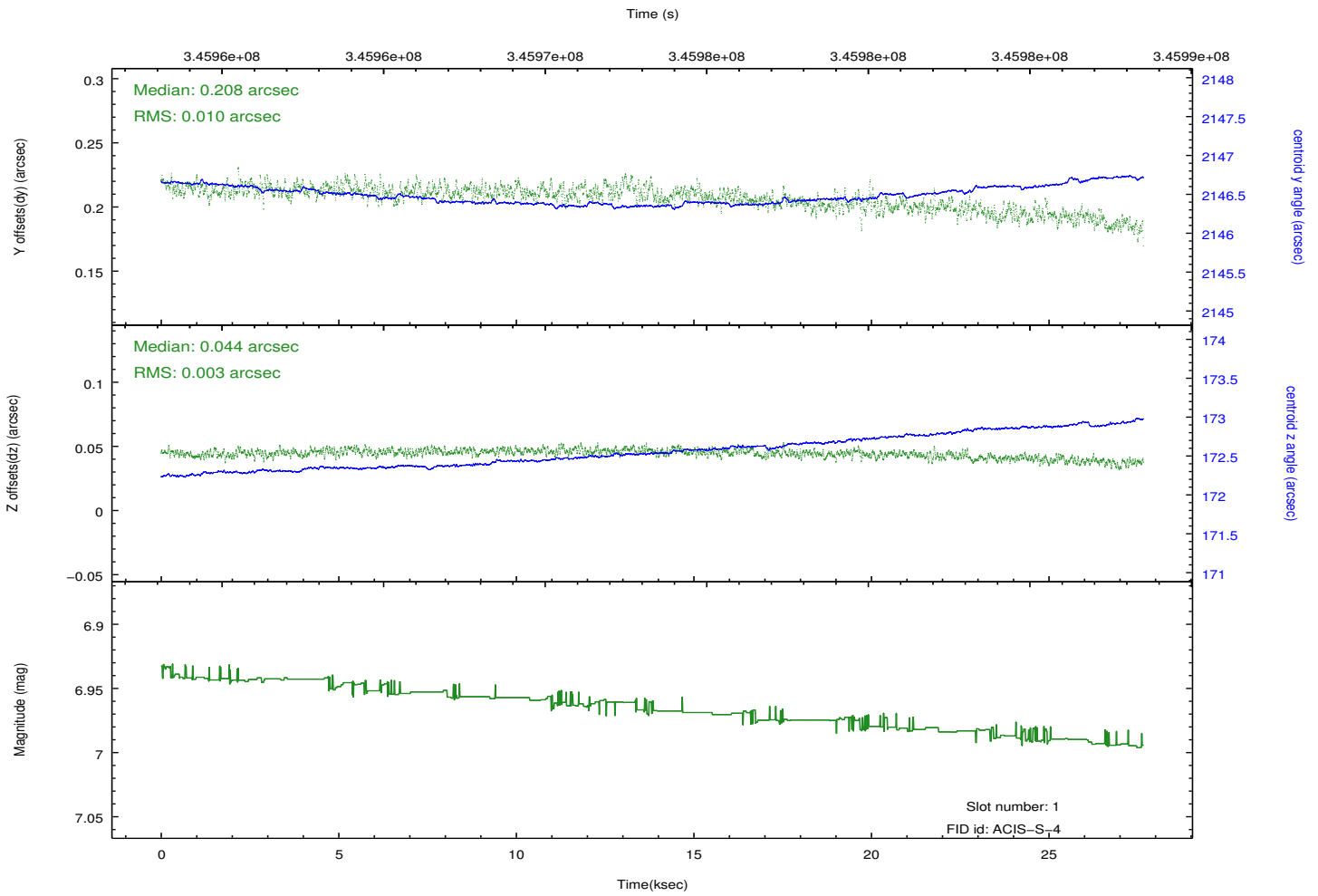
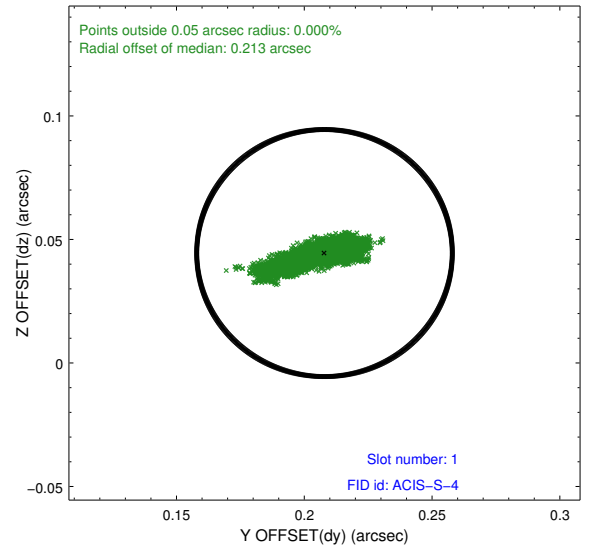
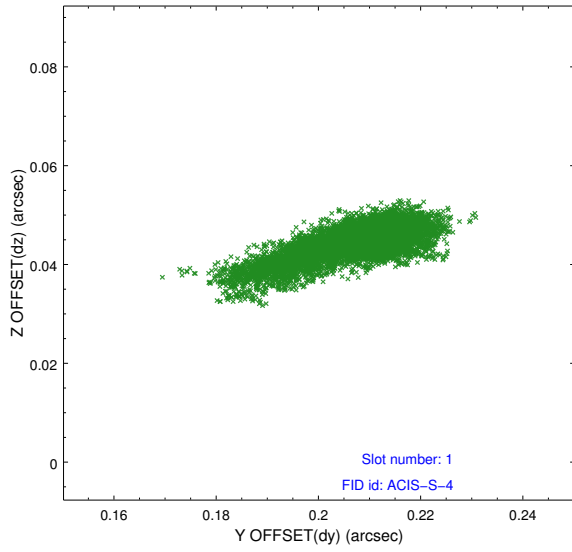


## 2.5 FID Slots

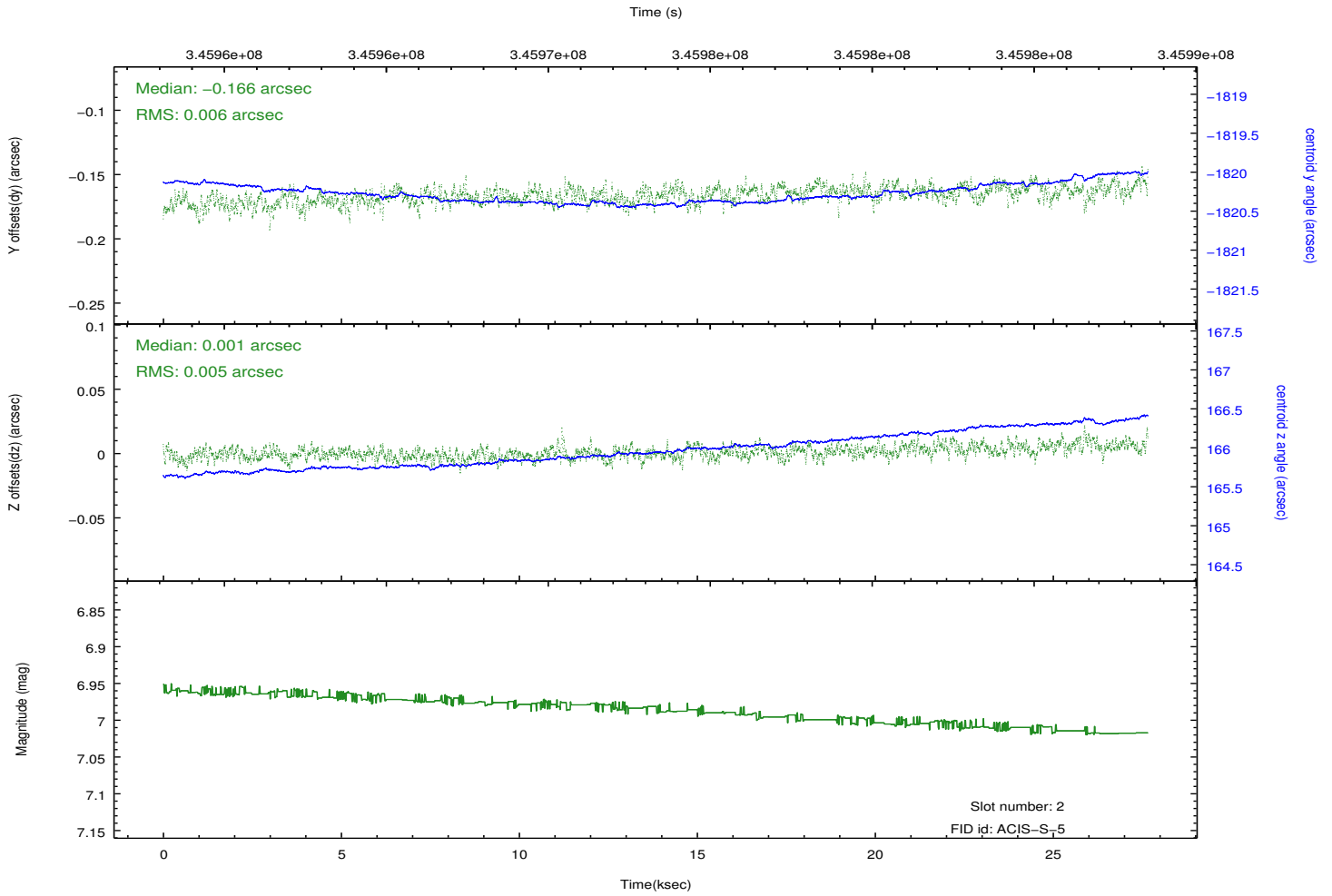
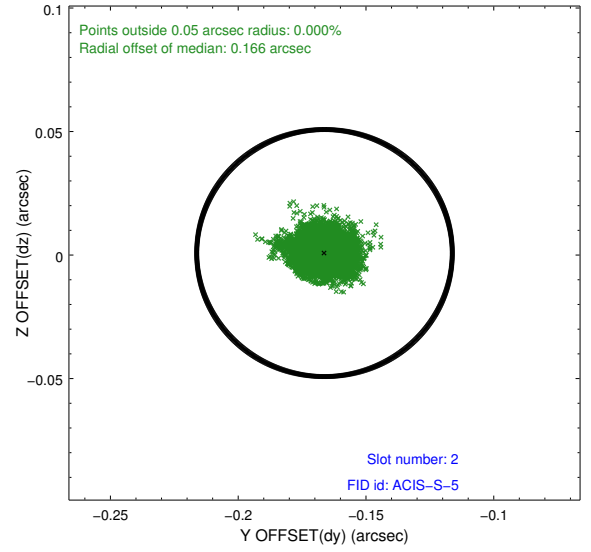
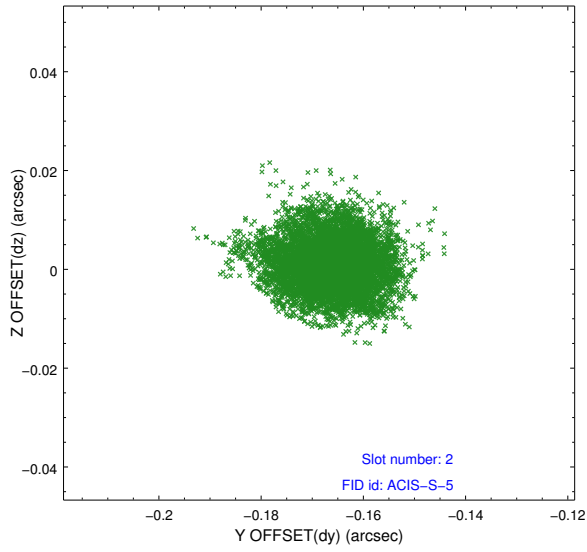
### 2.5.1 Slot 0



## 2.5.2 Slot 1



### 2.5.3 Slot 2



# A Summary

## A.1 Status

V&V Scientist	Jen Lauer
V&V Date (YYYY-MM-DD)	2012.06.01
V&V Edition	1
V&V Disposition and Status	OK
V&V Charge Time	27.5621002

## A.2 Comments