

V&V Reference Report

L2 ASCDS Version : 8.4.4

Observation 10756 - L2 Version 2
Chandra X-Ray Center

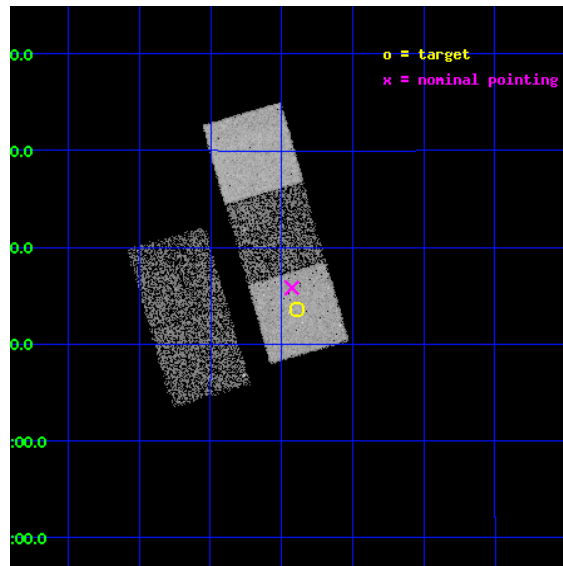
L2 Processing Date : Jun 1 2012

Contents

1	Front	2
2	OBI	3
2.1	OBI	3
2.1.1	Images	3
2.1.2	Bias	3
2.1.3	Parameters	4
2.1.4	Events	4
2.2	Compared Parameters	5
2.3	Aspect	6
2.4	Star Slots	9
2.4.1	Slot 3	9
2.4.2	Slot 4	10
2.4.3	Slot 5	11
2.4.4	Slot 6	12
2.4.5	Slot 7	13
2.5	FID Slots	14
2.5.1	Slot 0	14
2.5.2	Slot 1	15
2.5.3	Slot 2	16
A	Summary	17
A.1	Status	17
A.2	Comments	17

1 Front

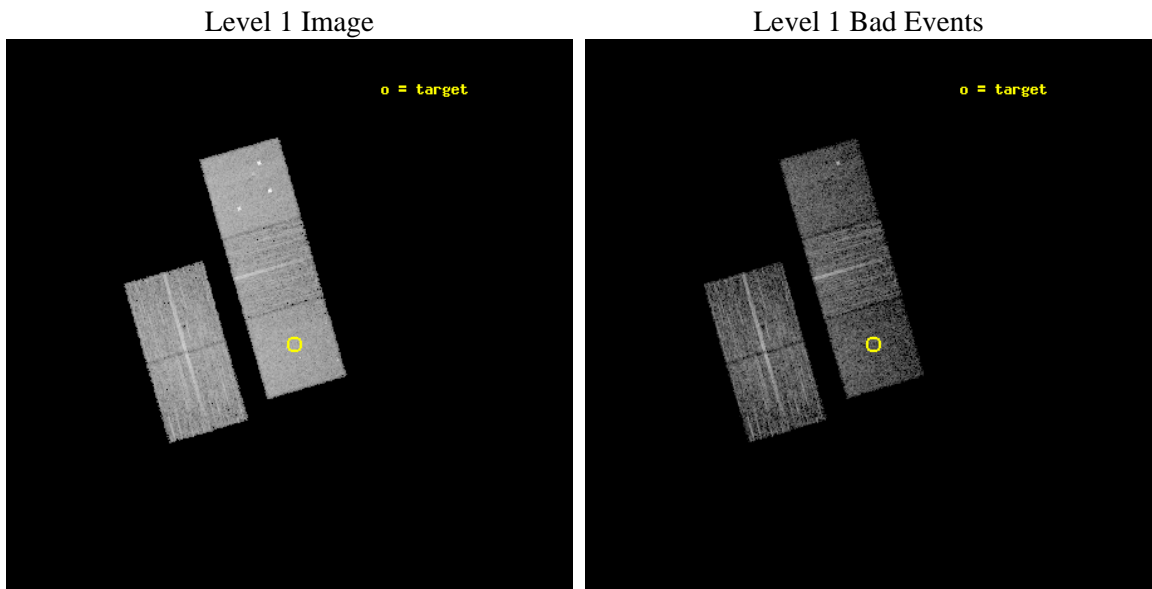
seq_num	900903	Sequence number
obs_id	10756	Observation id
title	The Origin and Evolution of Fossil Groups	Proposal title
observer	Professor Gordon Garmire	Principal investigator
object	SDSS J1136+0713	Source name
dtcycle	0	
cycle	P	events from which exps? Prim/Second/Both
ra_targ	174.09875	Observer's specified target RA [deg]
dec_targ	7.227083	Observer's specified target Dec [deg]
ra_nom	174.10683218504	Nominal RA [deg]
dec_nom	7.2638117305479	Nominal Dec [deg]
roll_nom	73.876671500345	Nominal Roll [deg]
revision	2	Processing version of data
ontime	5062.3000389338	Sum of GTIs [s]
livetime	4996.157362114	Livetime [s]
ontime2	5059.1590486765	Sum of GTIs [s]
ontime3	5062.3000389338	Sum of GTIs [s]
ontime5	5062.3000389338	Sum of GTIs [s]
ontime6	5062.3000389338	Sum of GTIs [s]
ontime7	5062.3000389338	Sum of GTIs [s]
l2events	61653	Number of level 2 events



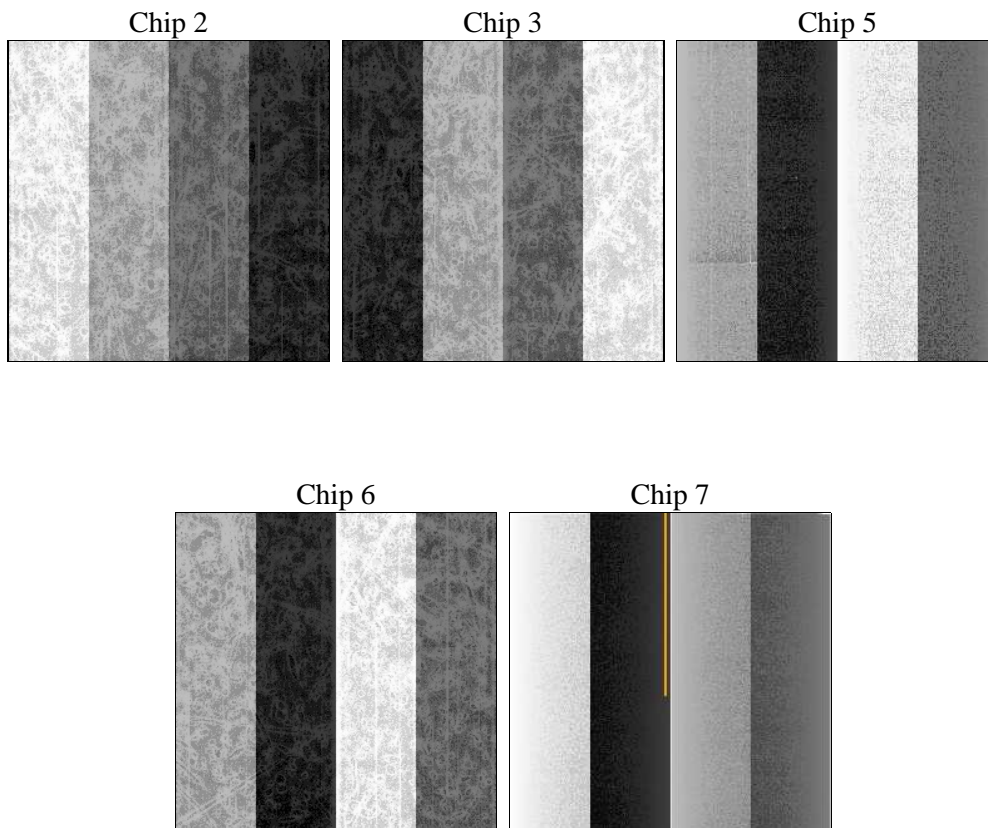
2 OBI

2.1 OBI

2.1.1 Images



2.1.2 Bias



2.1.3 Parameters

obi_num	0	Obi number	sched_exp_time	5000.000000	[s] Scheduled observation exposure time
ascdsver	8.4.4	Processing system revision	ontime	5062.3000389338	Sum of GTIs [s]
caldbver	4.4.9	 	ontime2	5059.1590486765	Sum of GTIs [s]
date	2012-06-01T09:41:36	Date and time of file creation	ontime3	5062.3000389338	Sum of GTIs [s]
revision	2	Processing version of data	ontime5	5062.3000389338	Sum of GTIs [s]
			ontime6	5062.3000389338	Sum of GTIs [s]
			ontime7	5062.3000389338	Sum of GTIs [s]
			l1events	243217	Number of level 1 events

2.1.4 Events

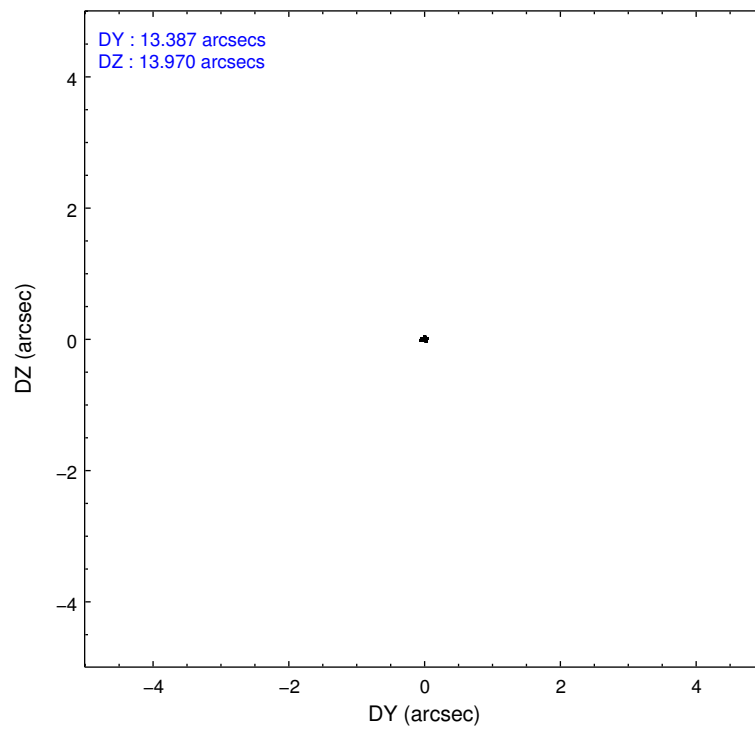
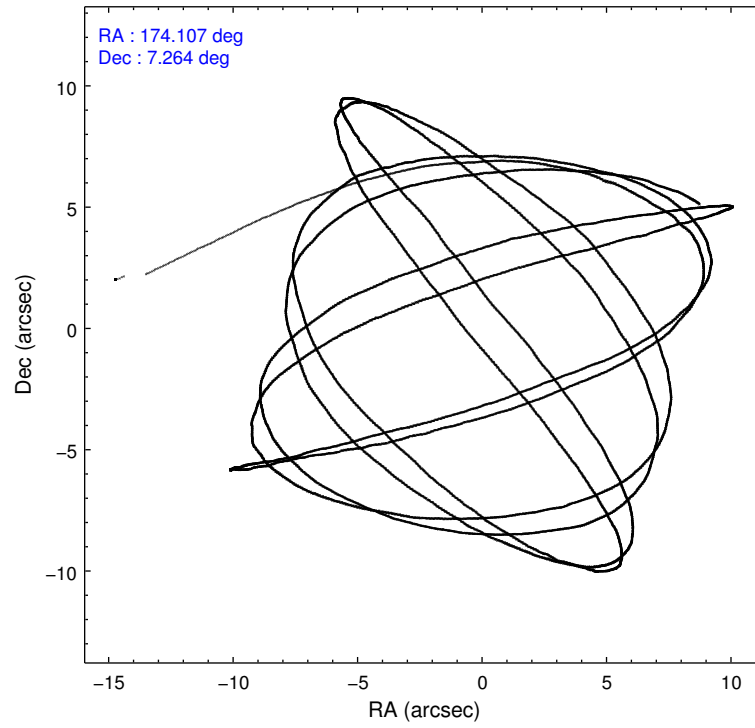
	ccd 2	ccd 3	ccd 5	ccd 6	ccd 7
level 1 events	44448	43090	62609	43381	49689
rejected events	40167	38899	30589	38853	26621
rejected %	90%	90%	48%	89%	53%

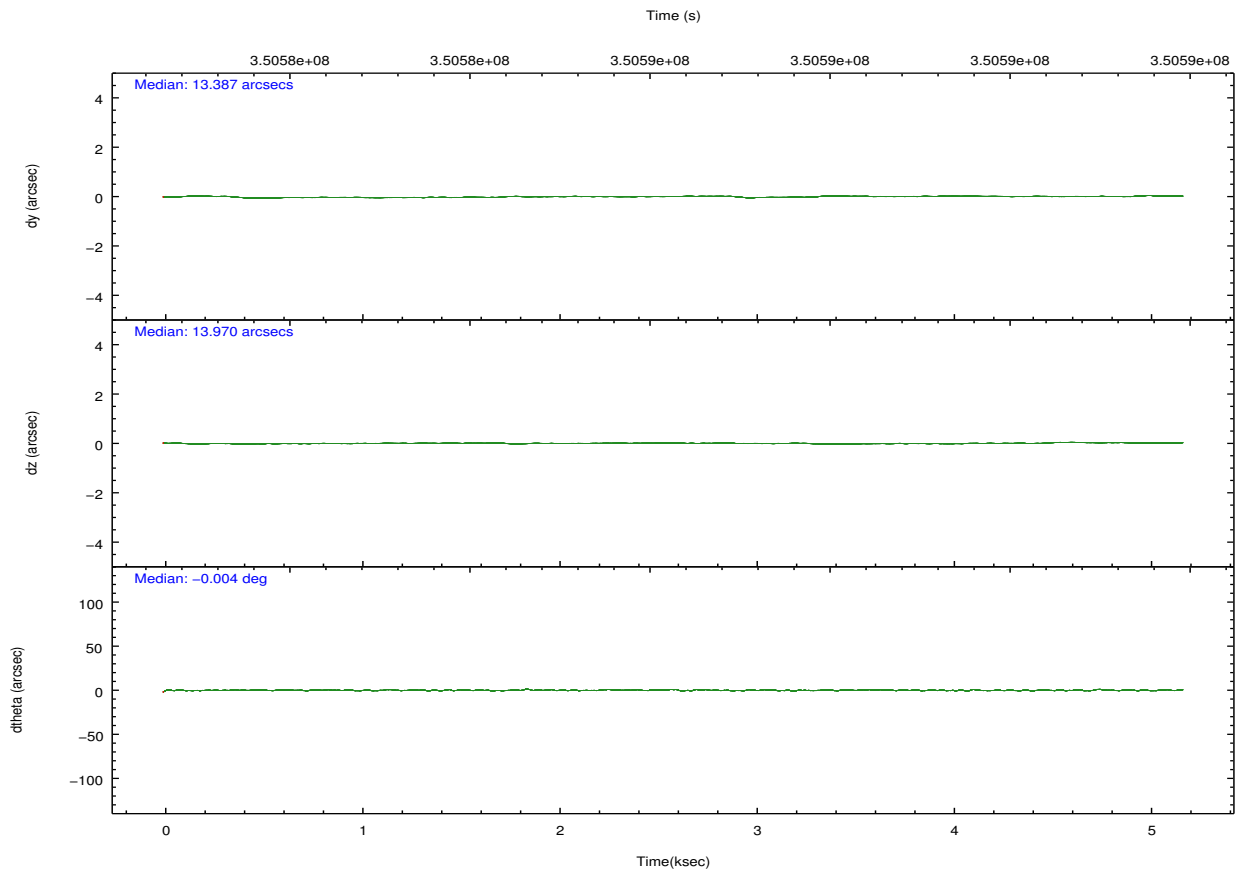
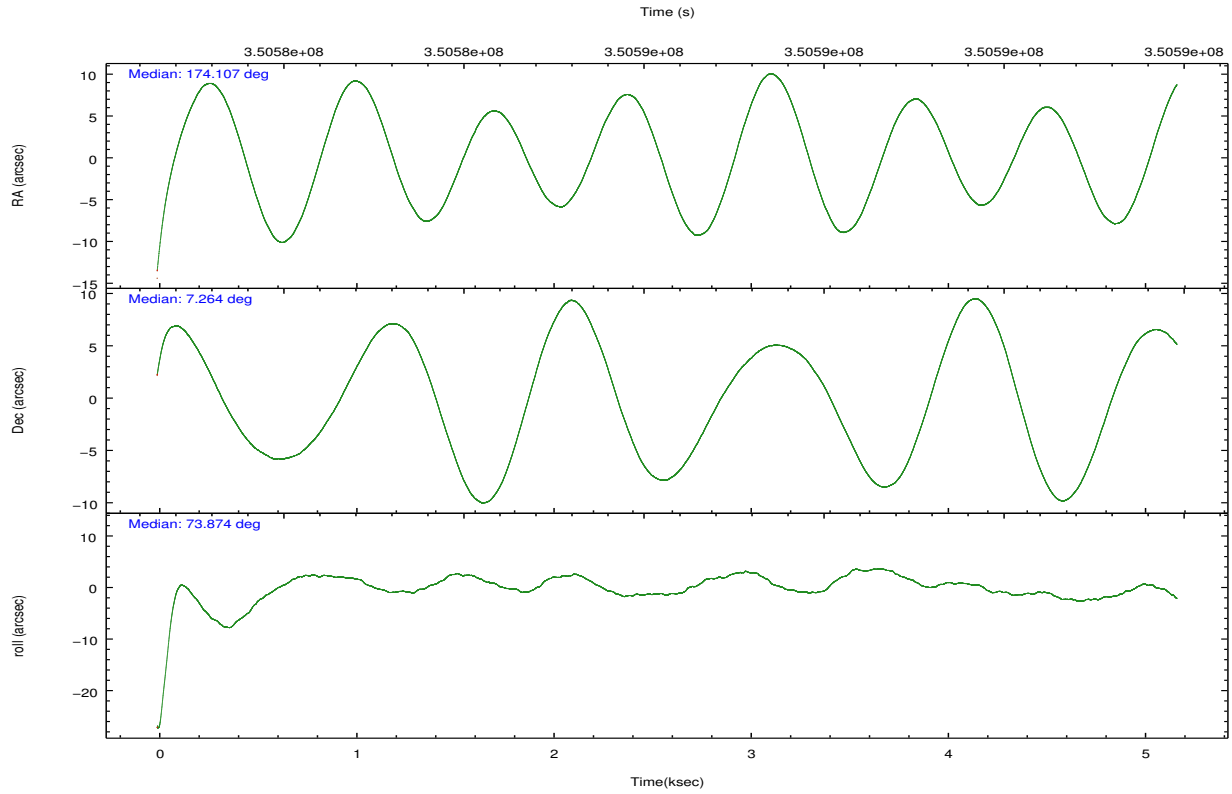
	ccd 2	ccd 3	ccd 5	ccd 6	ccd 7
grade 0 events	1519	1539	4772	1529	2375
	3%	3%	7%	3%	4%
grade 1 events	22	19	187	26	62
	0%	0%	0%	0%	0%
grade 2 events	1026	917	9428	1041	4868
	2%	2%	15%	2%	9%
grade 3 events	423	436	1290	457	2150
	0%	1%	2%	1%	4%
grade 4 events	501	495	1203	477	2120
	1%	1%	1%	1%	4%
grade 5 events	1524	1672	4864	1761	5185
	3%	3%	7%	4%	10%
grade 6 events	819	809	15370	1026	11581
	1%	1%	24%	2%	23%
grade 7 events	38614	37203	25495	37064	21348
	86%	86%	40%	85%	42%

2.2 Compared Parameters

Parameter	Planned	Actual	Parameter	Planned	Actual
Instrument	ACIS	ACIS	Obspar format version number	7	7
Detector	ACIS-23567	ACIS-23567	Obspar file type	PREDICTED	ACTUAL
Grating	NONE	NONE	Obspar update status	NONE	UPDATED
Data mode	VFAINT	VFAINT	CCD I0 on	N	N
Observation mode	POINTING	POINTING	CCD I1 on	N	N
[deg] Pointing RA	174.113839	174.1068321850447	CCD I2 on	O1	Y
[deg] Pointing Dec	7.237296	7.263811730547866	CCD I3 on	O2	Y
[deg] Pointing Roll	73.719230	73.87667150034537	CCD S0 on	N	N
[mm] SIM focus pos	-0.684267	-0.6828225247311905	CCD S1 on	Y	Y
[mm] SIM defocus	0	0.001444936568705701	CCD S2 on	Y	Y
[mm] SIM translation stage pos	-190.132523	-190.1400660498719	CCD S3 on	Y	Y
[mm] SIM translation stage offset	0	0.00754346686406393	CCD S4 on	N	N
[s] Observation start time (MET)	350583712.184000	350582767.82989	CCD S5 on	N	N
Observation start date	2009-02-09T16:20:46	2009-02-09T16:06:07	Number of optional ACIS chips dropped	0	0
[s] Observation end time (MET)	350588712.184000	350589617.90523	On-chip summing requested	N	N
Observation end date	2009-02-09T17:44:06	2009-02-09T18:00:17	Subarray requested	NONE	NONE
Read mode	TIMED	TIMED	Alternating exposures requested	N	N
			[s] Primary exposure time	0.000000	3.1

2.3 Aspect



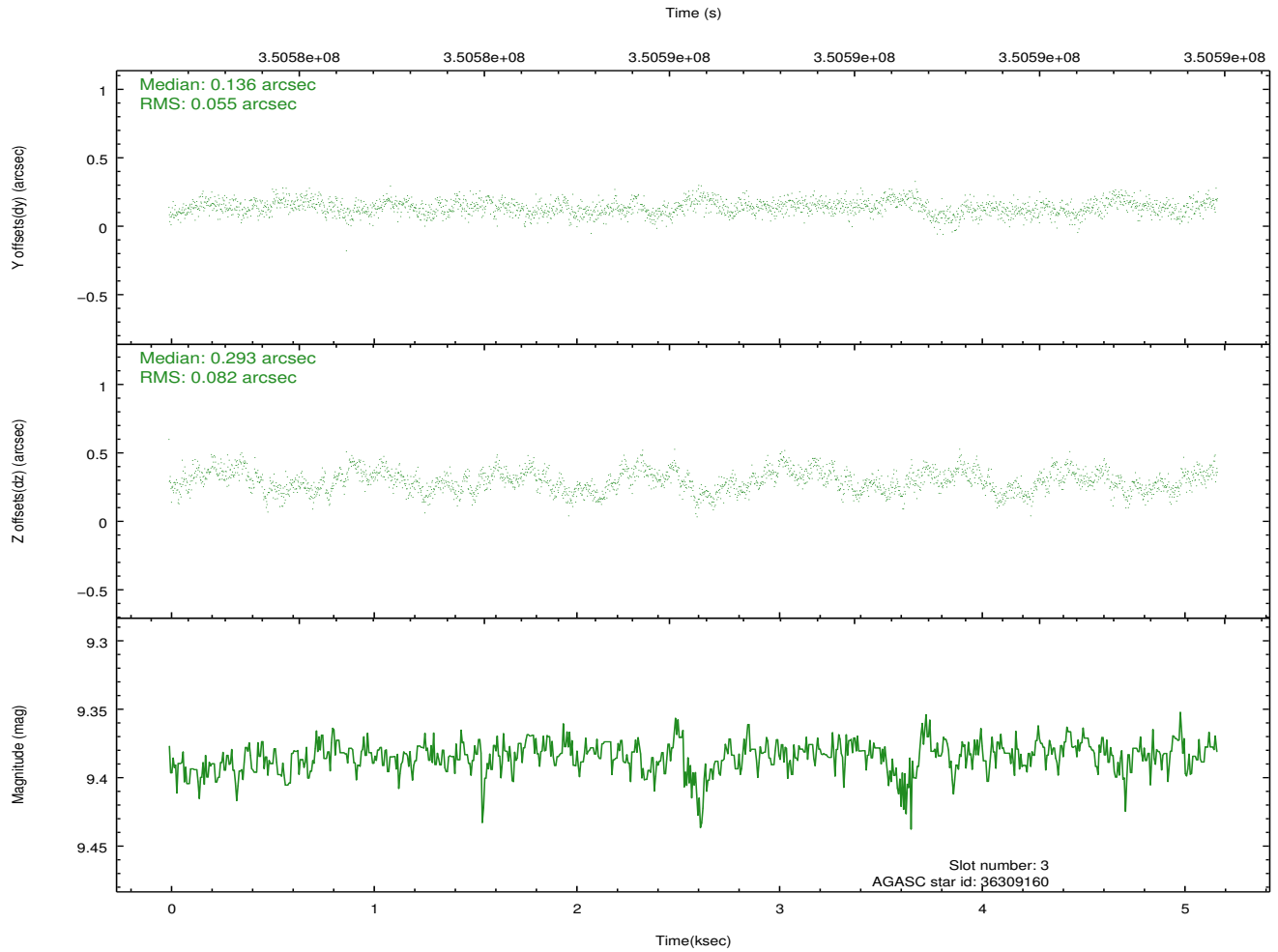
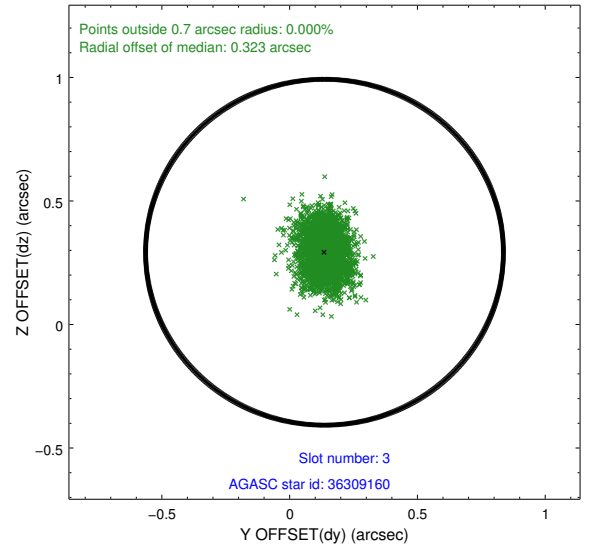
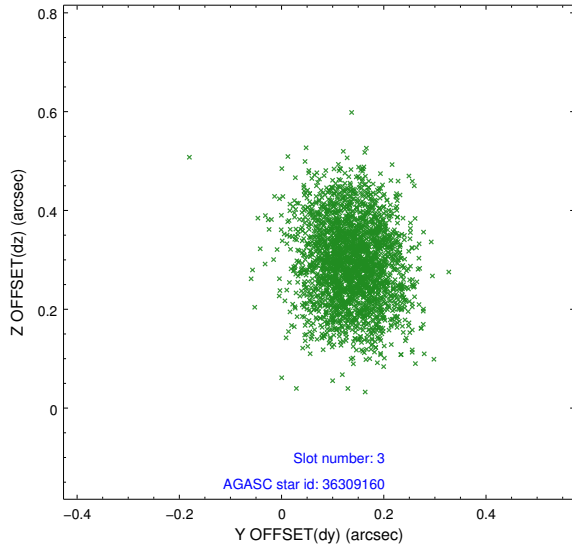


Slot Statistics

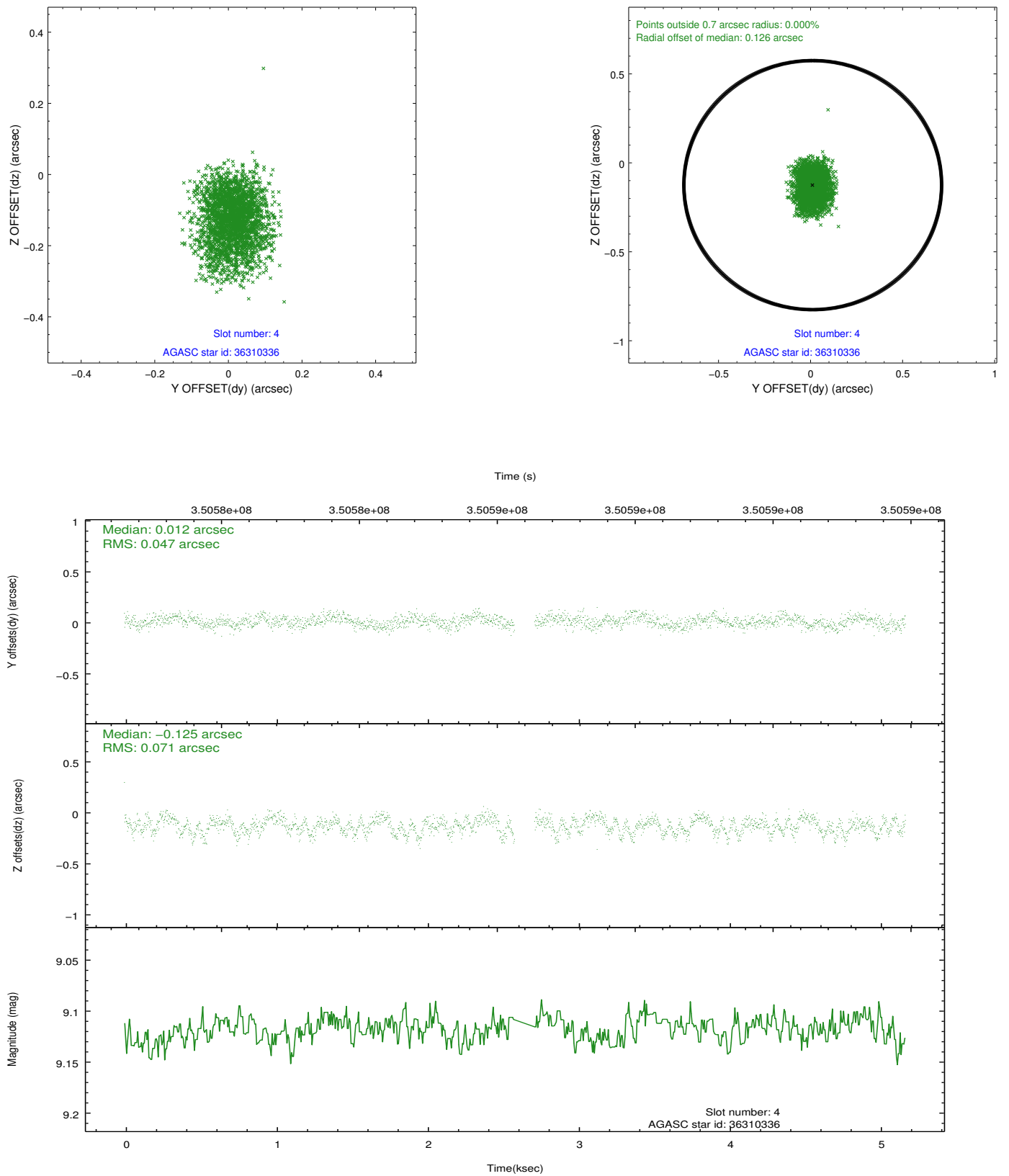
slot	status	id	mag	n_pts	med_dy	med_dz	dr1	dr2	ra	dec	mean_y	mean_z
0	FID	ACIS-S-2	6.93	1262	-0.079	-0.041	0.005	0.010	0.000000	0.000000	-766.39	-1735.36
1	FID	ACIS-S-4	7.02	1262	0.100	0.040	0.006	0.009	0.000000	0.000000	2146.54	171.98
2	FID	ACIS-S-6	7.16	1262	-0.049	0.009	0.006	0.010	0.000000	0.000000	397.14	810.68
3	GUIDE	36309160	9.38	2521	0.136	0.293	0.105	0.169	174.450728	6.683120	-1576.59	-1715.16
4	GUIDE	36310336	9.12	2455	0.012	-0.125	0.091	0.147	174.435602	6.847810	-1023.76	-1497.63
5	GUIDE	36310576	9.49	2522	0.081	-0.161	0.090	0.152	173.844628	7.174367	-488.13	858.71
6	GUIDE	36313496	8.71	2520	-0.079	0.117	0.079	0.129	174.694611	7.395742	1130.16	-1829.26
7	GUIDE	112335120	9.49	2519	-0.155	-0.121	0.131	0.204	173.821483	7.626535	1053.33	1393.60

2.4 Star Slots

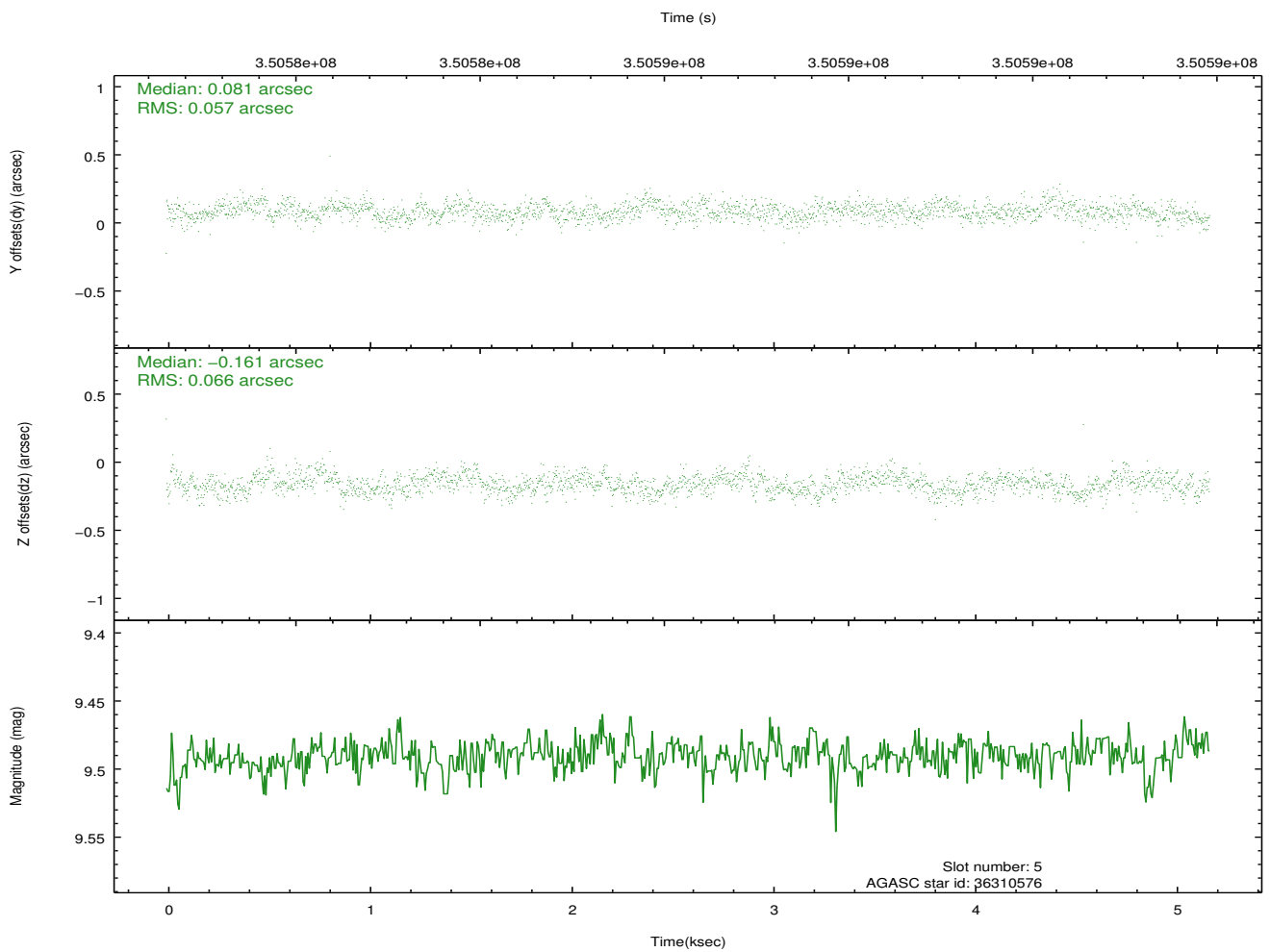
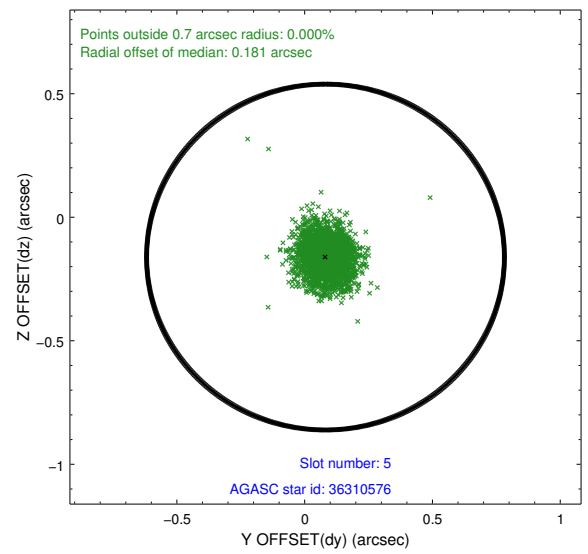
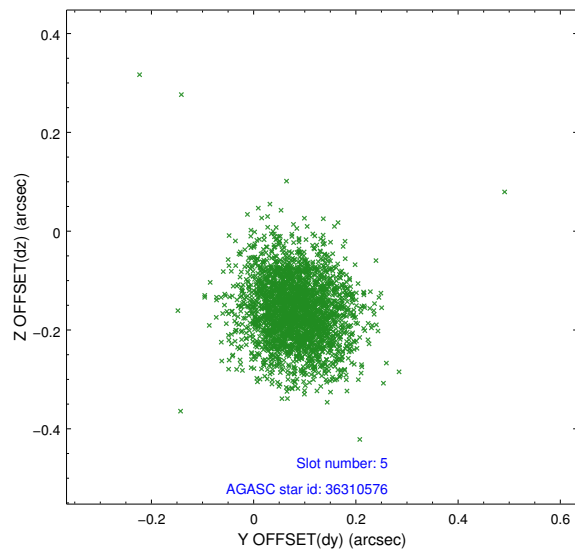
2.4.1 Slot 3



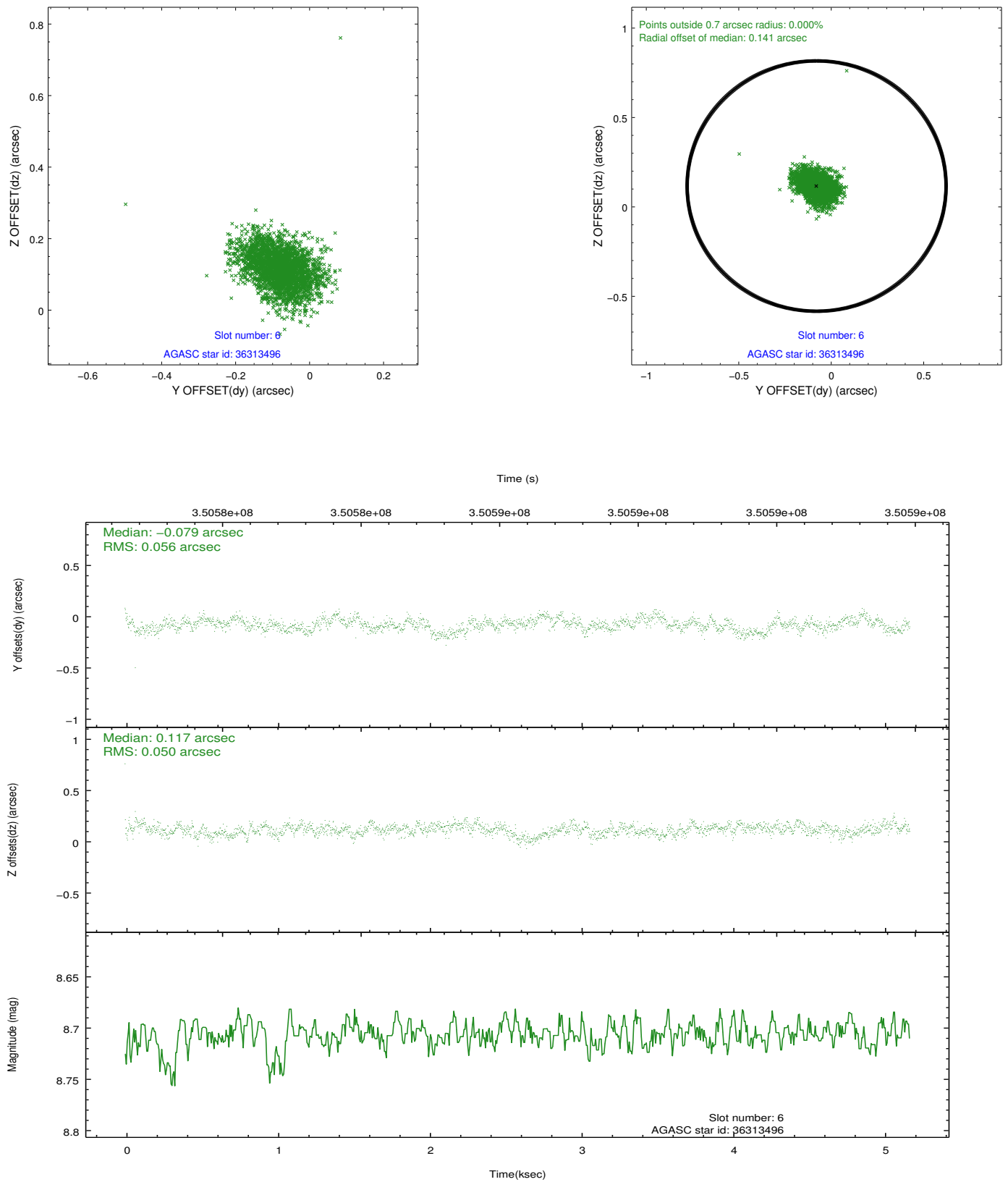
2.4.2 Slot 4



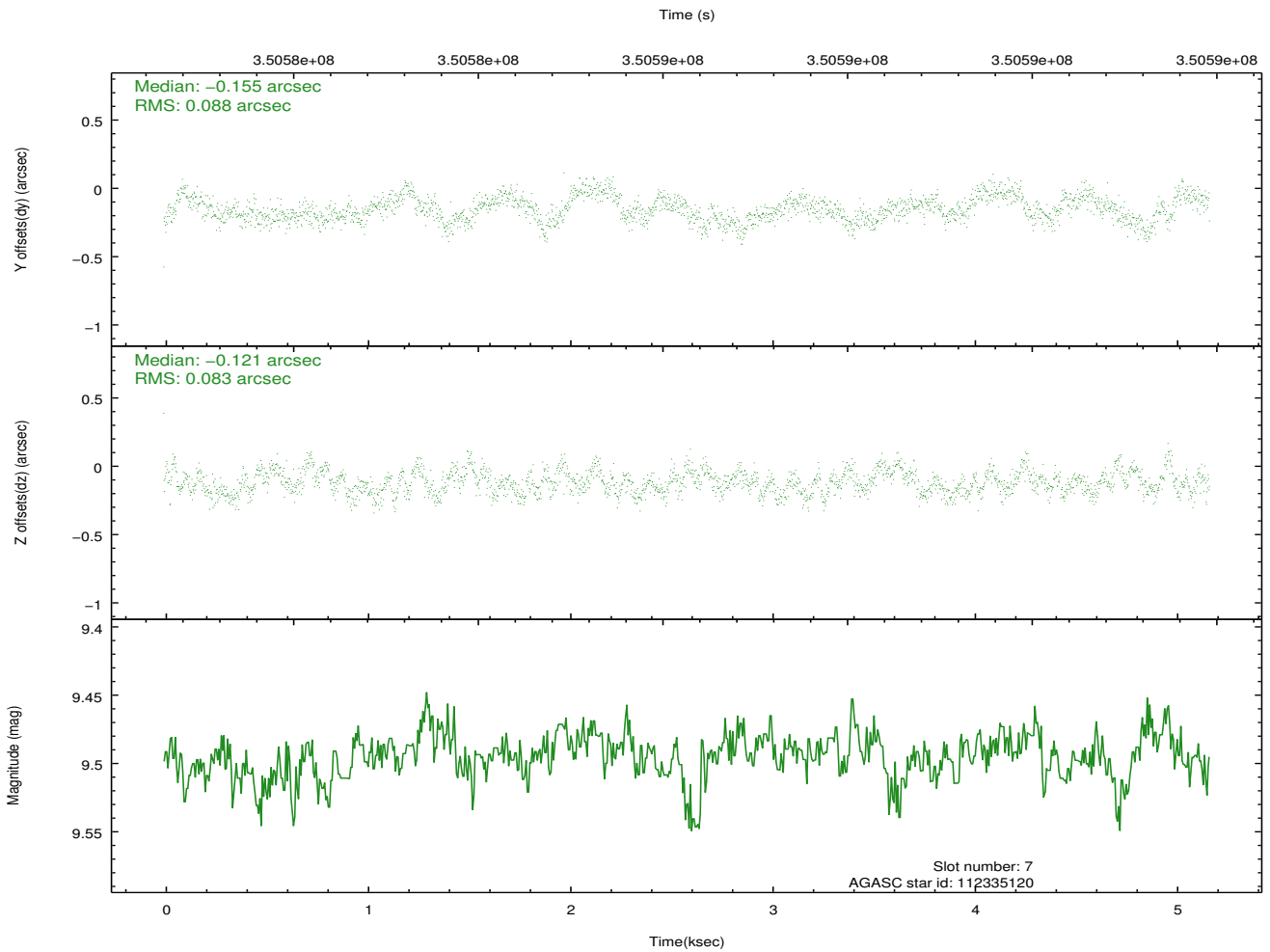
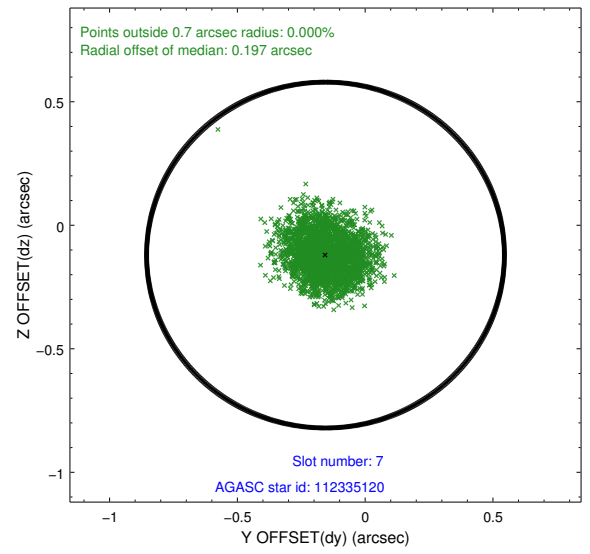
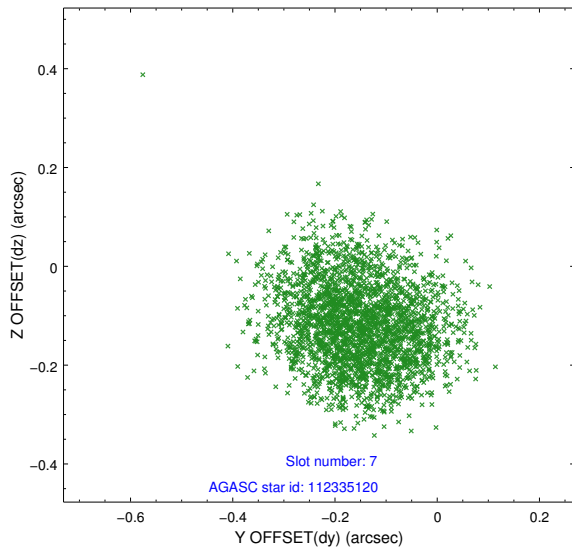
2.4.3 Slot 5



2.4.4 Slot 6

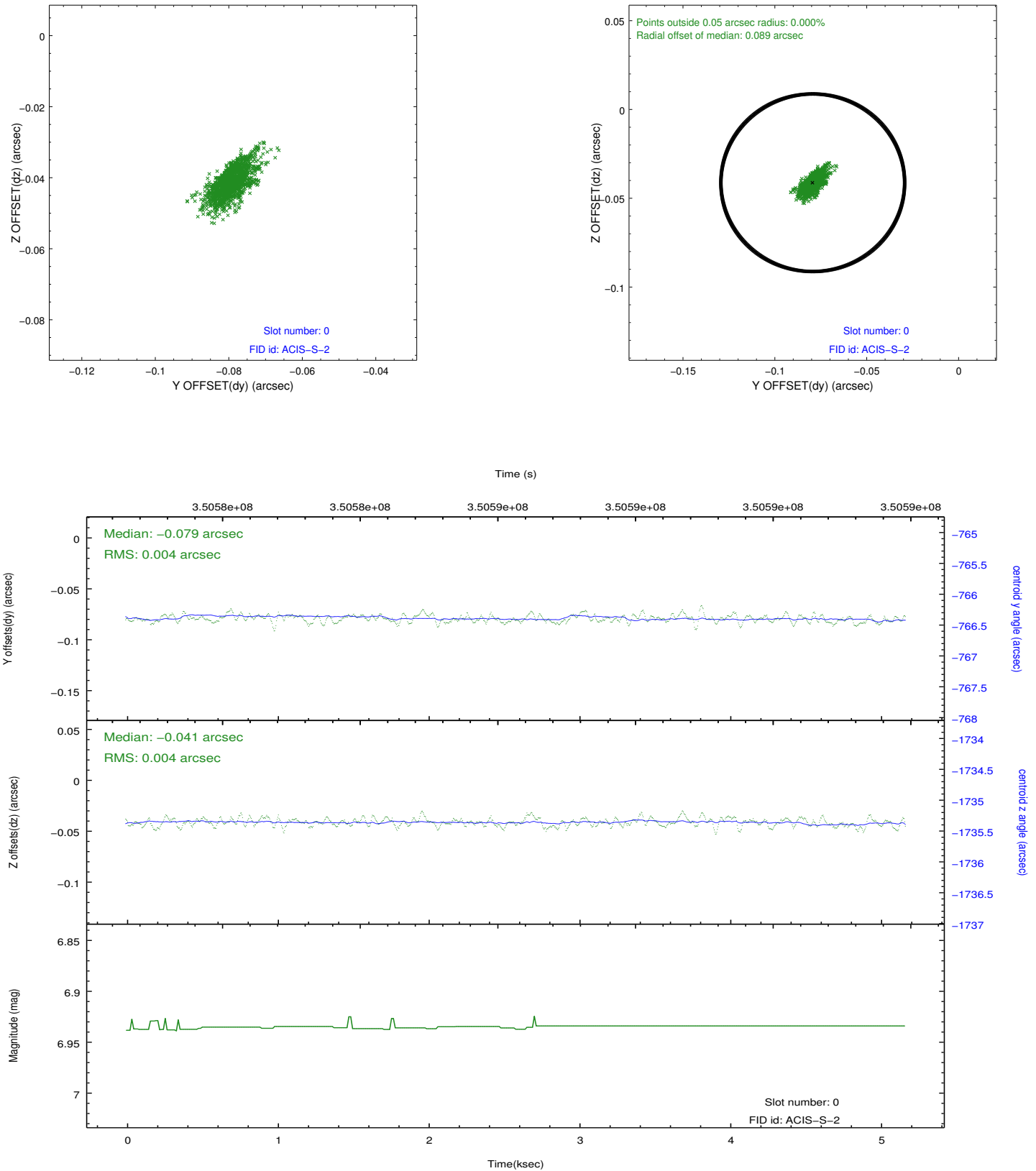


2.4.5 Slot 7

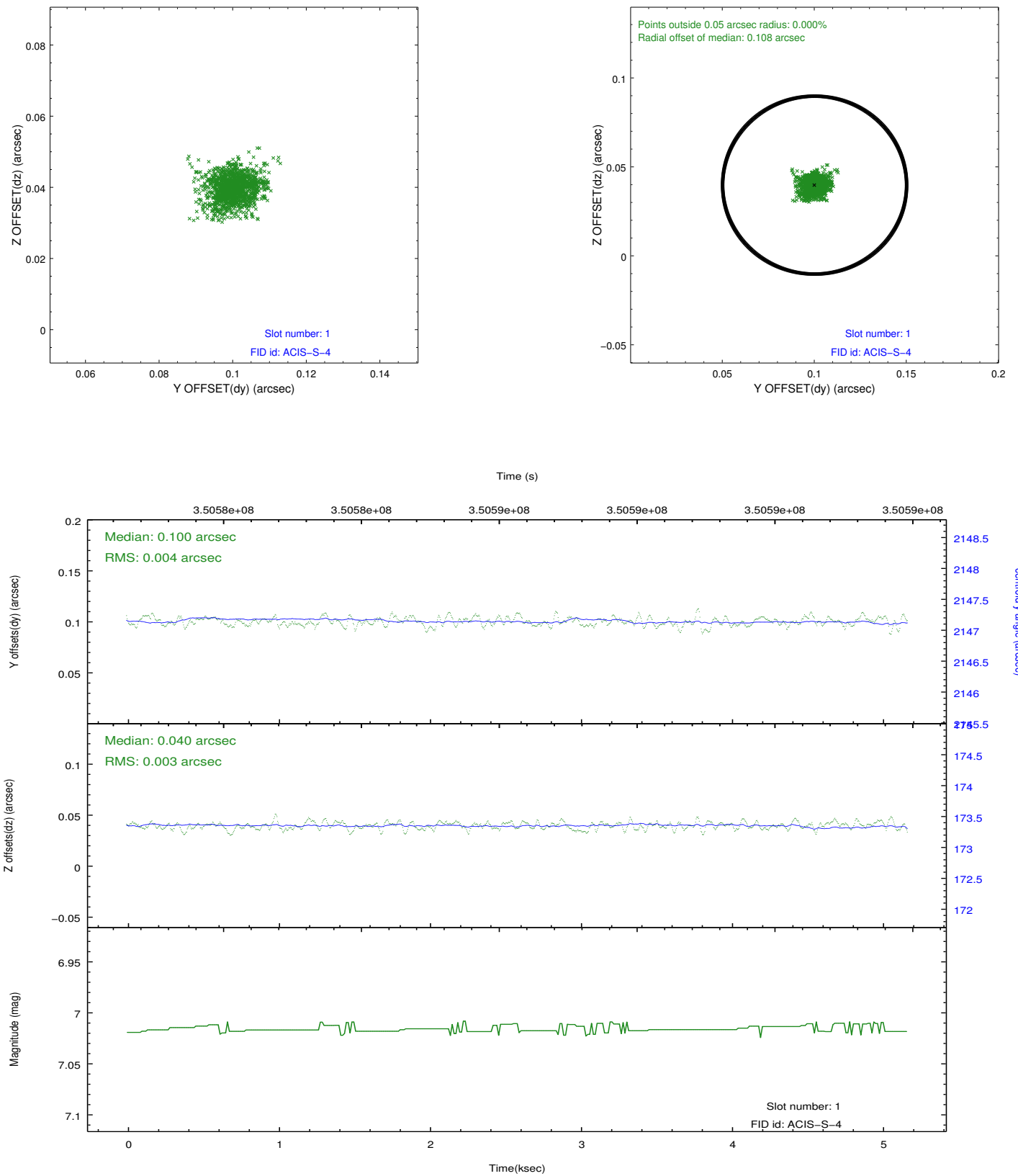


2.5 FID Slots

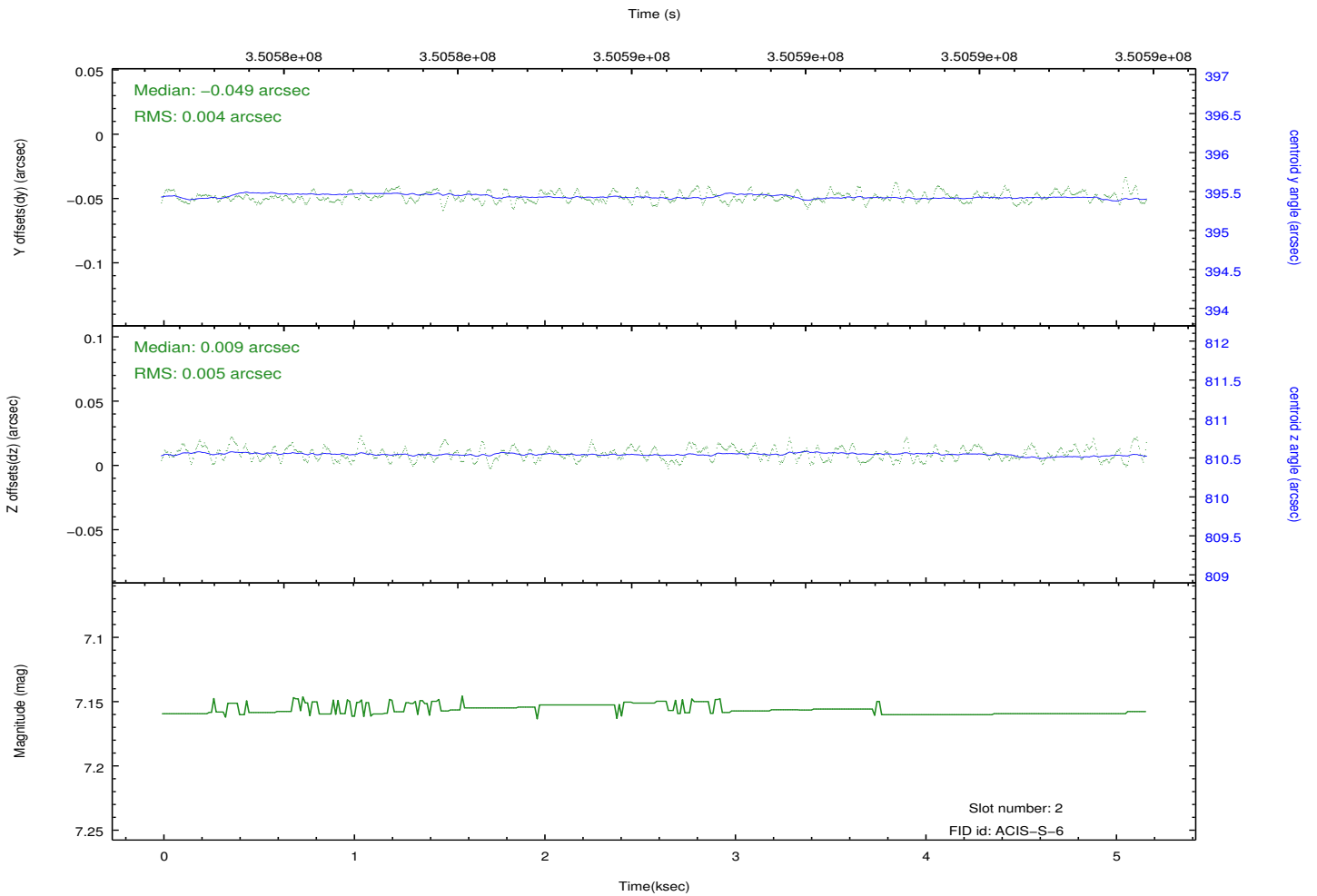
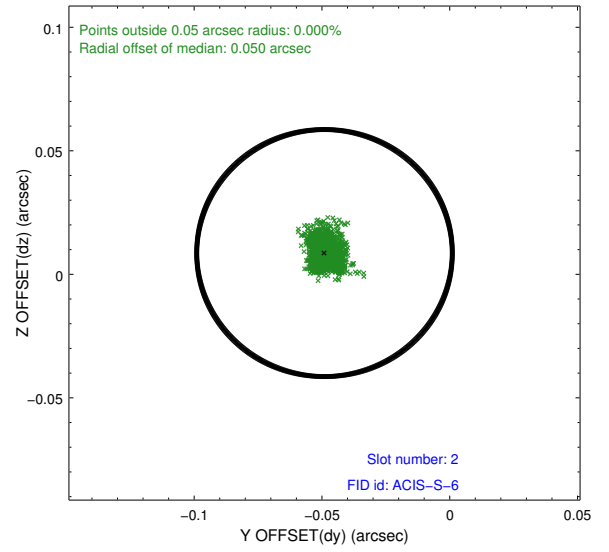
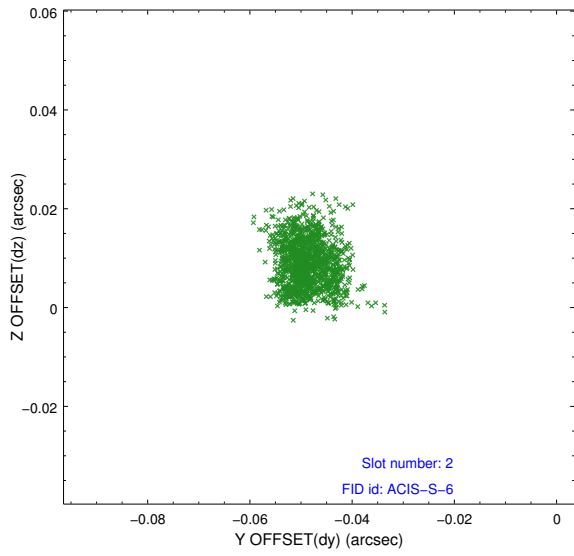
2.5.1 Slot 0



2.5.2 Slot 1



2.5.3 Slot 2



A Summary

A.1 Status

V&V Scientist	Beth Sundheim
V&V Date (YYYY-MM-DD)	2012.06.06
V&V Edition	1
V&V Disposition and Status	OK
V&V Charge Time	5.06230003

A.2 Comments