

# V&V Reference Report

## L2 ASCDS Version : 8.4.5

Observation 10886 - L2 Version 3  
Chandra X-Ray Center

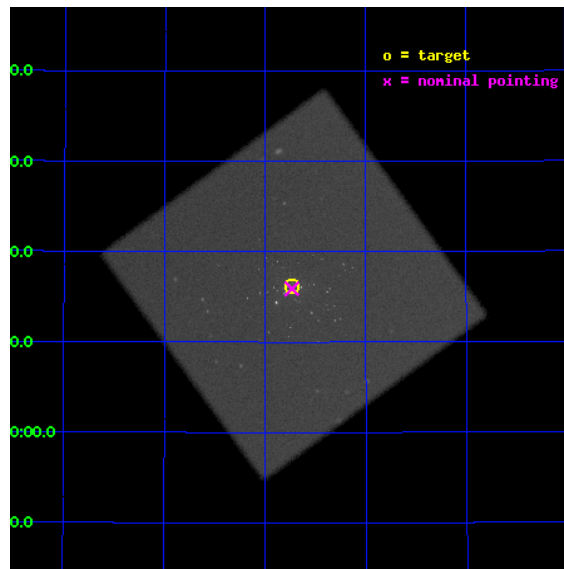
L2 Processing Date : Aug 13 2012

## Contents

<b>1</b>	<b>Front</b>	<b>2</b>
<b>2</b>	<b>OBI</b>	<b>3</b>
2.1	OBI . . . . .	3
2.1.1	Images . . . . .	3
2.1.2	Parameters . . . . .	4
2.1.3	Events . . . . .	4
2.2	Compared Parameters . . . . .	5
2.3	Aspect . . . . .	6
2.4	Star Slots . . . . .	9
2.4.1	Slot 3 . . . . .	9
2.4.2	Slot 4 . . . . .	10
2.4.3	Slot 5 . . . . .	11
2.4.4	Slot 6 . . . . .	12
2.4.5	Slot 7 . . . . .	13
2.5	FID Slots . . . . .	14
2.5.1	Slot 0 . . . . .	14
2.5.2	Slot 1 . . . . .	15
2.5.3	Slot 2 . . . . .	16
<b>A</b>	<b>Summary</b>	<b>17</b>
A.1	Status . . . . .	17
A.2	Comments . . . . .	17

# 1 Front

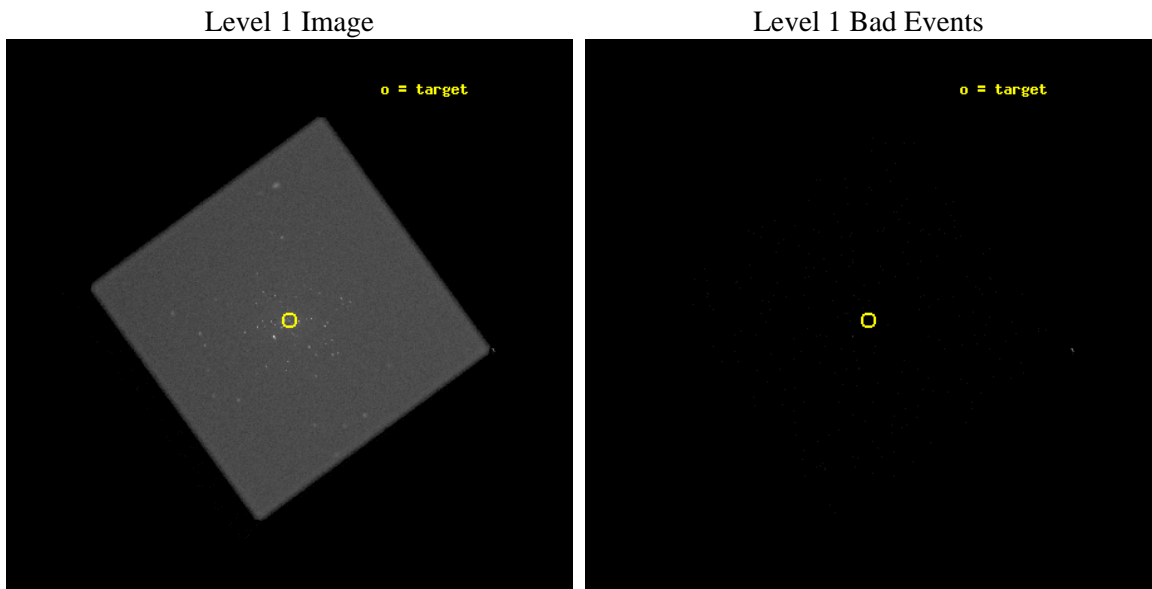
seq_num	300263	Sequence number
obs_id	10886	Observation id
title	Resolving short supersoft source states of optical novae in the core of M31	Proposal title
observer	Dr. Wolfgang Pietsch	Principal investigator
object	M31	Source name
ra_targ	10.684583	Observer's specified target RA [deg]
dec_targ	41.269278	Observer's specified target Dec [deg]
ra_nom	10.683412626002	Nominal RA [deg]
dec_nom	41.265130059692	Nominal Dec [deg]
roll_nom	278.9198206283	Nominal Roll [deg]
revision	3	Processing version of data
ontime	18578.125938654	[s]
livetime	18343.808793268	Ontime multiplied by DTCOR
l2events	1512796	Number of level 2 events



## 2 OBI

### 2.1 OBI

#### 2.1.1 Images



### 2.1.2 Parameters

obi_num	0	Obi number	sched_exp_time	18400.000000	[s] Scheduled observation exposure time
ascdsver	8.4.5	Processing system revision	ontime	18578.125938654	[s]
caldbver	4.5.1.1	&#160	l1events	2184470	Number of level 1 events
date	2012-08-13T19:16:39	Date and time of file creation			
revision	3	Processing version of data			

### 2.1.3 Events

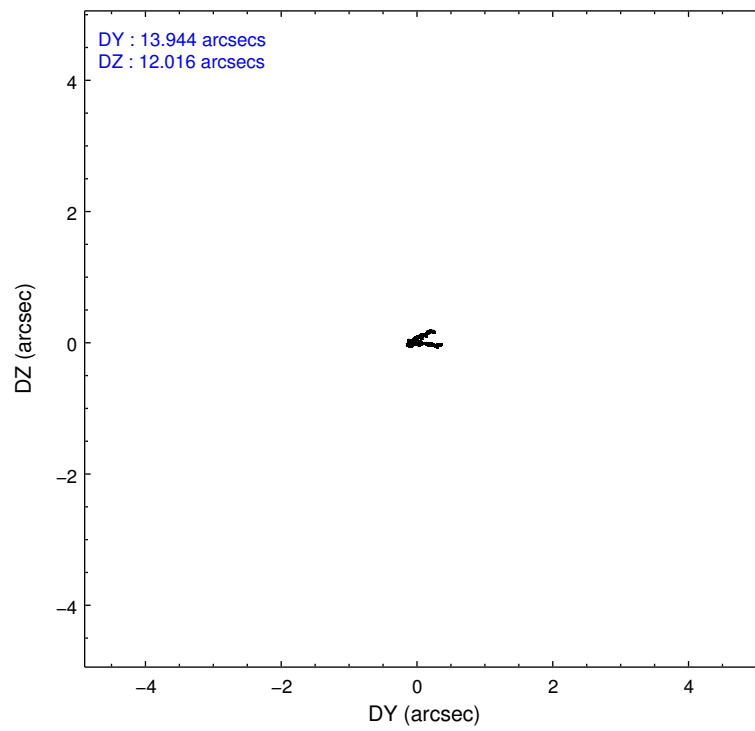
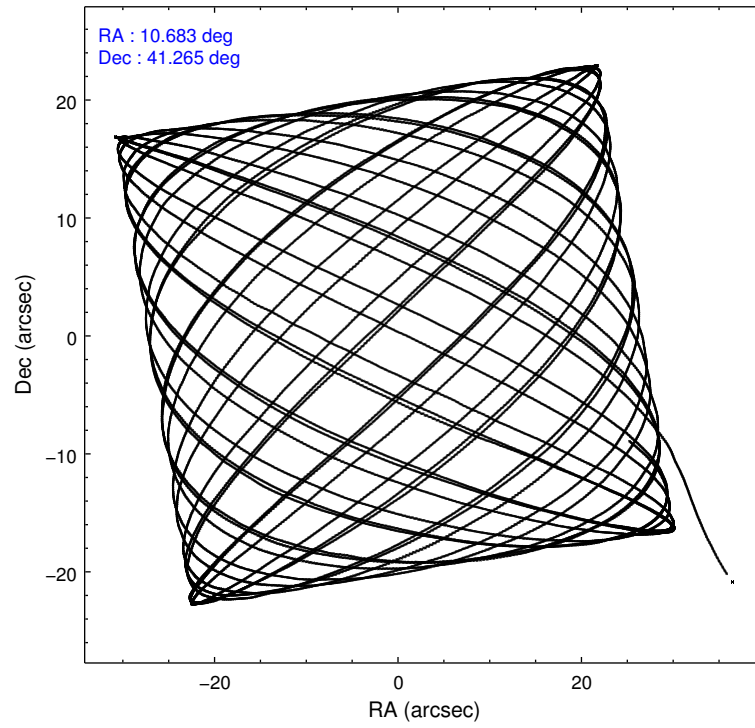
#### Level 1 Events

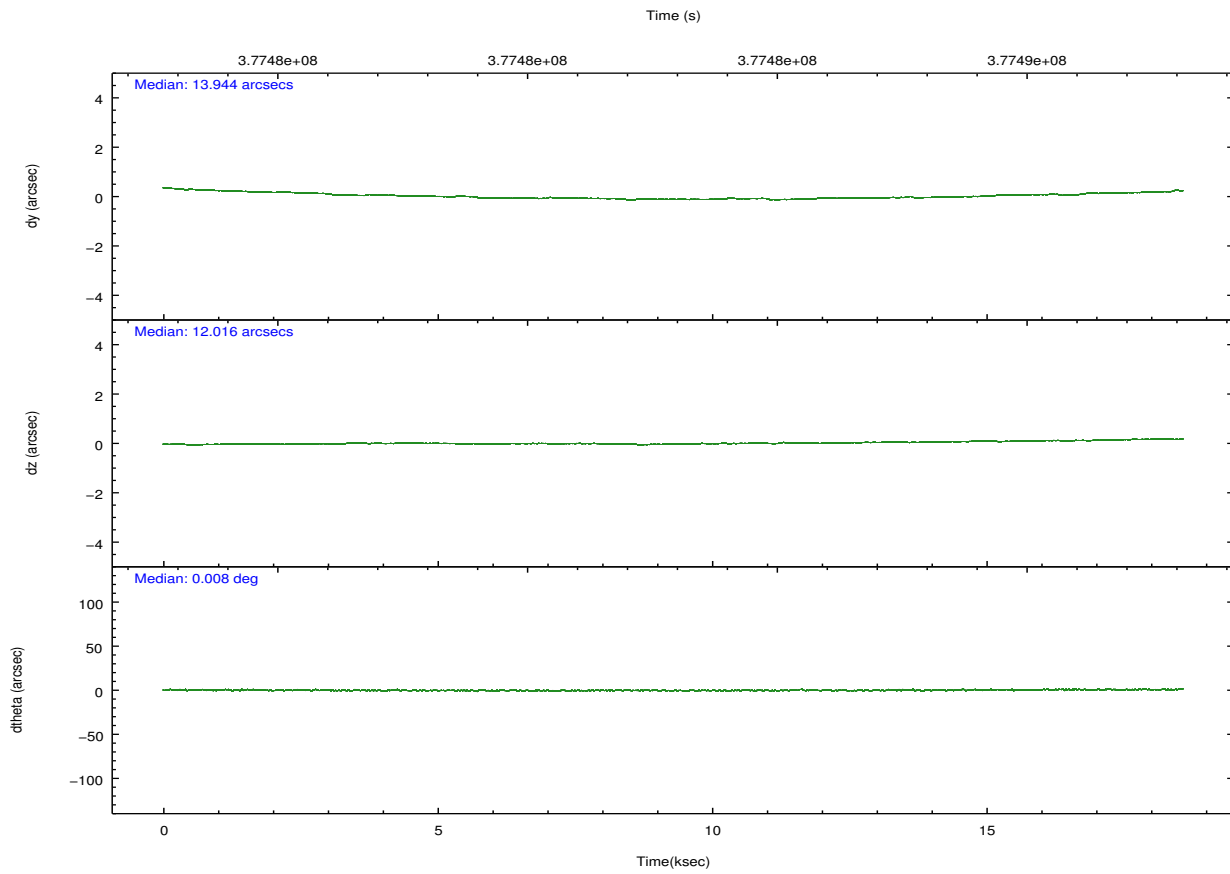
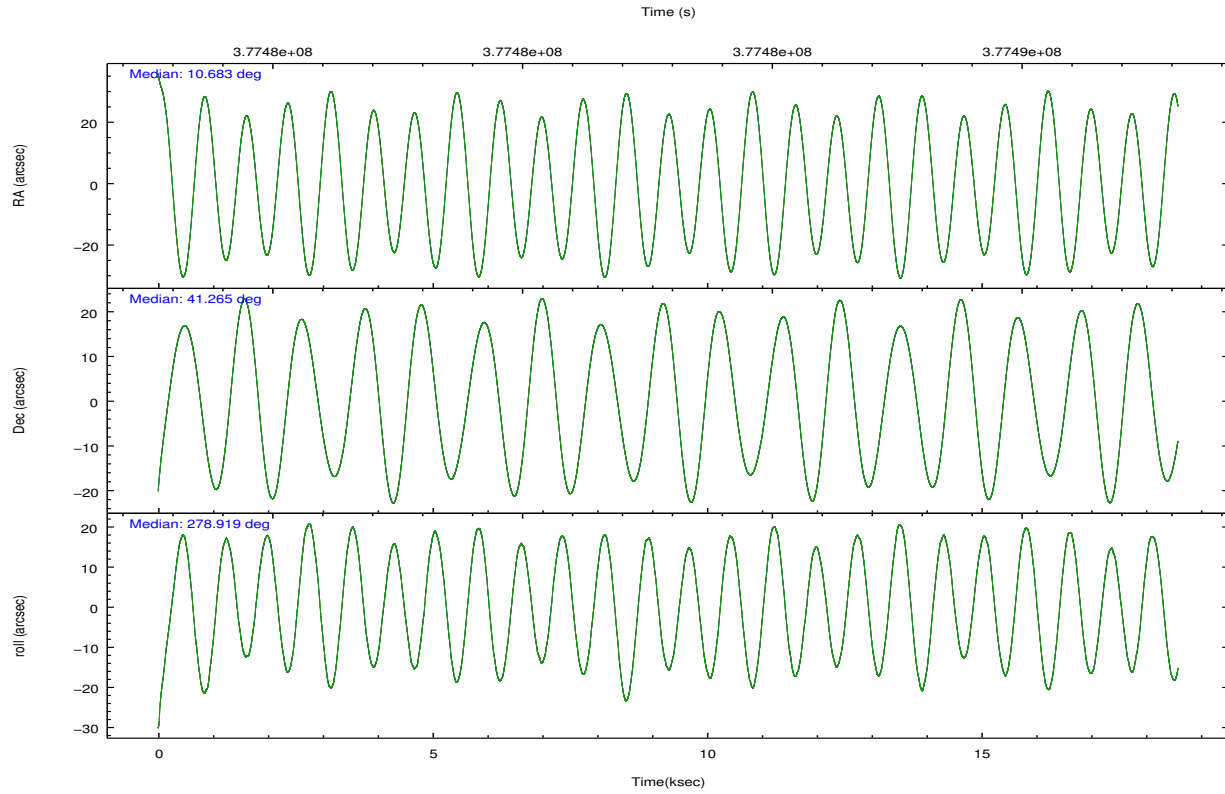
	<b>segment 0</b>
level 1 events	2184470
rejected events	22386
rejected %	<b>1%</b>

## 2.2 Compared Parameters

Parameter	Planned	Actual	Parameter	Planned	Actual
Instrument	HRC	HRC	Obspar format version number	7	7
Detector	HRC-I	HRC-I	Obspar file type	PREDICTED	ACTUAL
Grating	NONE	NONE	Obspar update status	NONE	UPDATED
Data mode	OBSERVING	OBSERVING			
Observation mode	POINTING	POINTING			
[deg] Pointing RA	10.659969	10.68341262600229			
[deg] Pointing Dec	41.285915	41.26513005969191			
[deg] Pointing Roll	279.030779	278.919820628305			
[mm] SIM focus pos	-1.040293	-1.038866356238299			
[mm] SIM defocus	0	0.001426264420575141			
[mm] SIM translation stage pos	126.985494	126.9854943052878			
[mm] SIM translation stage offset	0	-5.413686238853188e-06			
[s] Observation start time (MET)	377473800.184000	377472935.38763			
Observation start date	2009-12-17T21:48:54	2009-12-17T21:35:35			
[s] Observation end time (MET)	377492200.184000	377492954.66364			
Observation end date	2009-12-18T02:55:34	2009-12-18T03:09:14			

## 2.3 Aspect



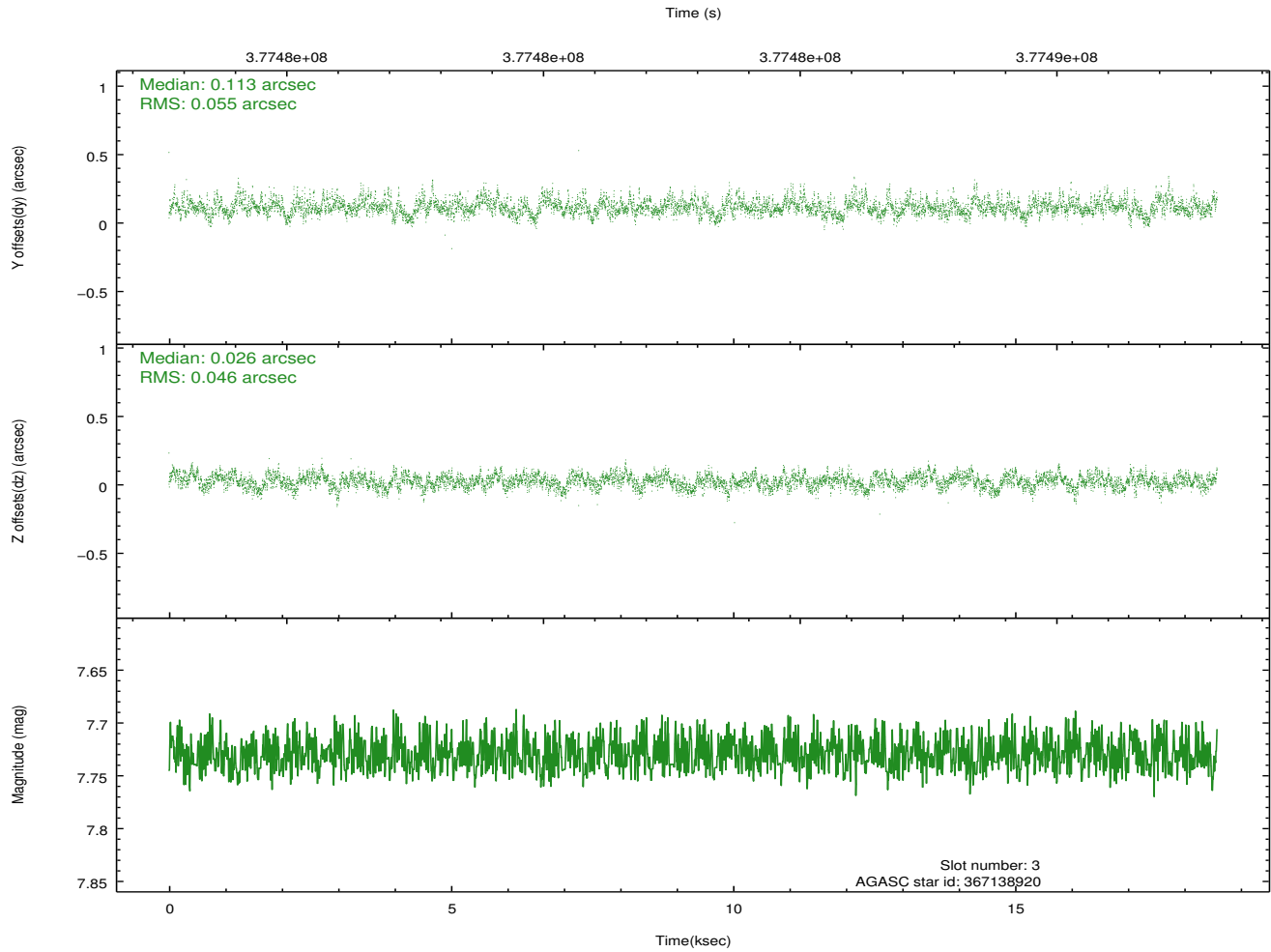
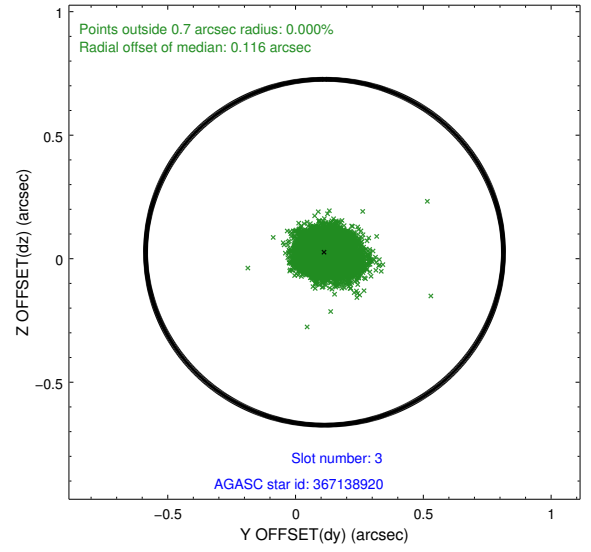
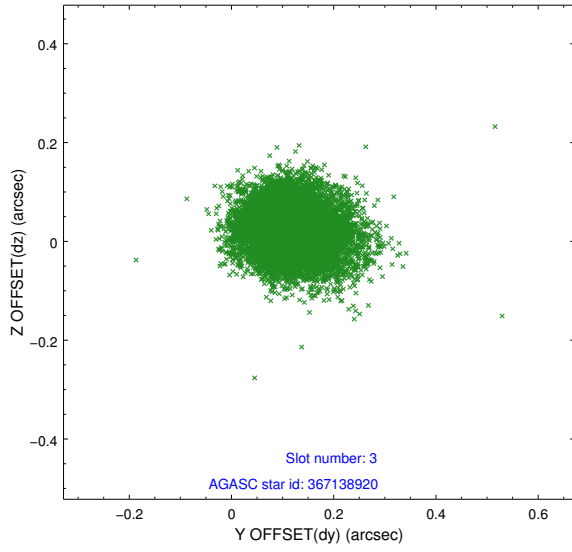


### Slot Statistics

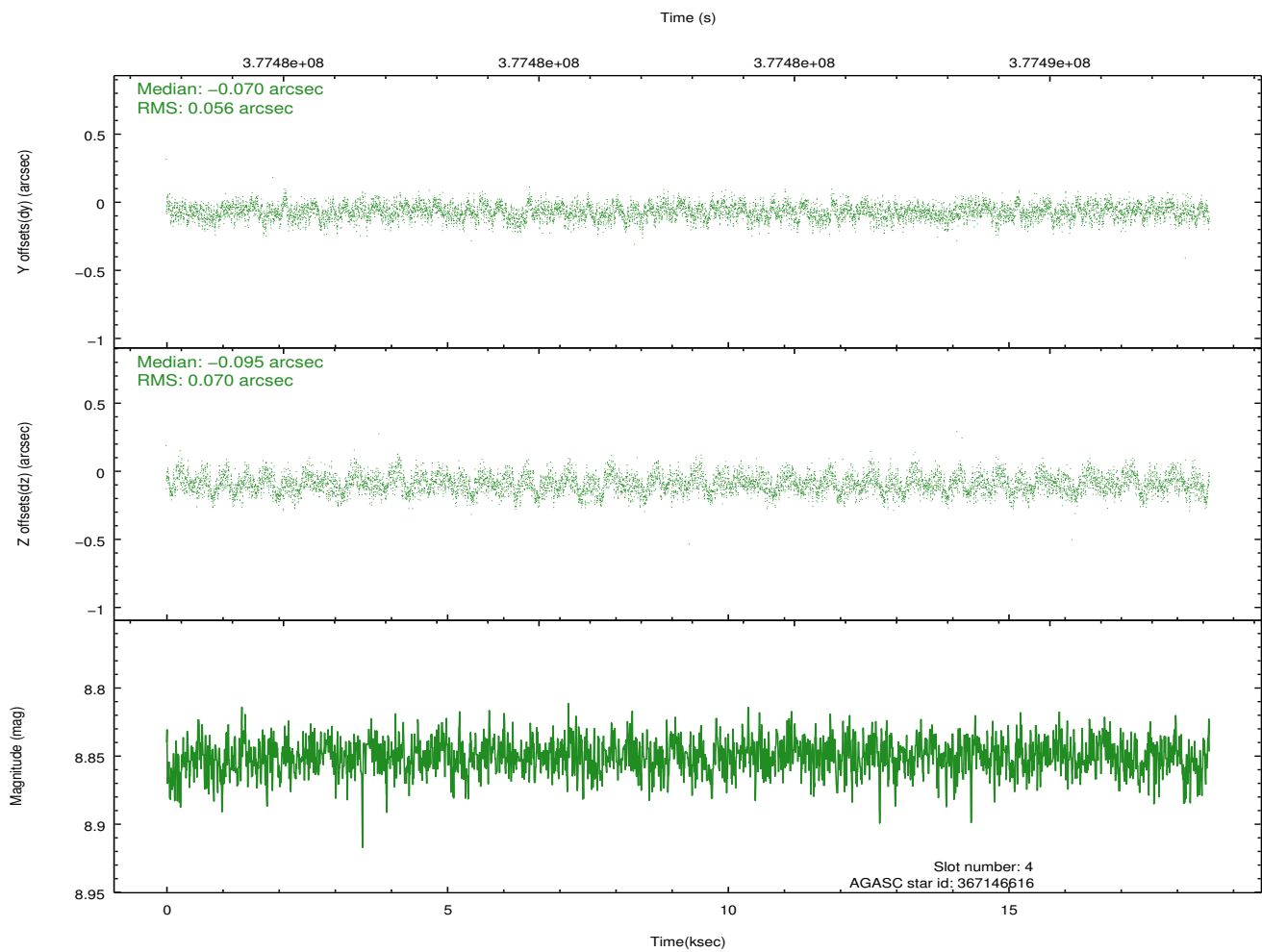
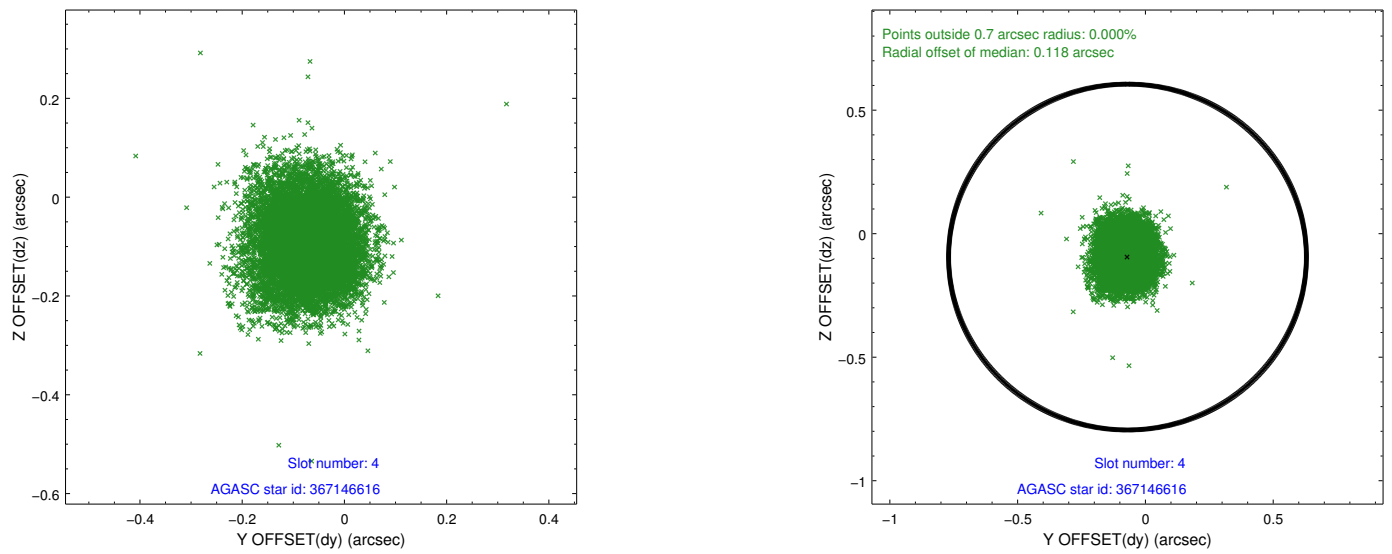
slot	status	id	mag	n_pts	med_dy	med_dz	dr1	dr2	ra	dec	mean_y	mean_z
0	FID	HRC-I-1	6.97	4532	-0.065	0.014	0.008	0.013	0.000000	0.000000	-769.80	-1300.08
1	FID	HRC-I-2	7.00	4531	0.249	-0.158	0.007	0.011	0.000000	0.000000	842.98	-1302.09
2	FID	HRC-I-3	7.06	4532	-0.065	0.054	0.006	0.011	0.000000	0.000000	-1198.12	1004.23
3	GUIDE	367138920	7.73	9063	0.113	0.026	0.076	0.125	11.513485	40.808909	2050.63	2029.91
4	GUIDE	367146616	8.85	9054	-0.070	-0.095	0.095	0.152	11.418645	41.190163	654.36	1977.20
5	GUIDE	367148872	7.23	9065	0.057	0.031	0.074	0.122	10.505940	40.688258	2059.31	-752.96
6	GUIDE	367663272	9.29	9047	-0.110	-0.020	0.111	0.184	10.656279	41.699429	-1471.35	222.83
7	GUIDE	367674552	8.85	9059	0.006	0.062	0.082	0.134	11.016238	41.570845	-864.39	1109.08

## 2.4 Star Slots

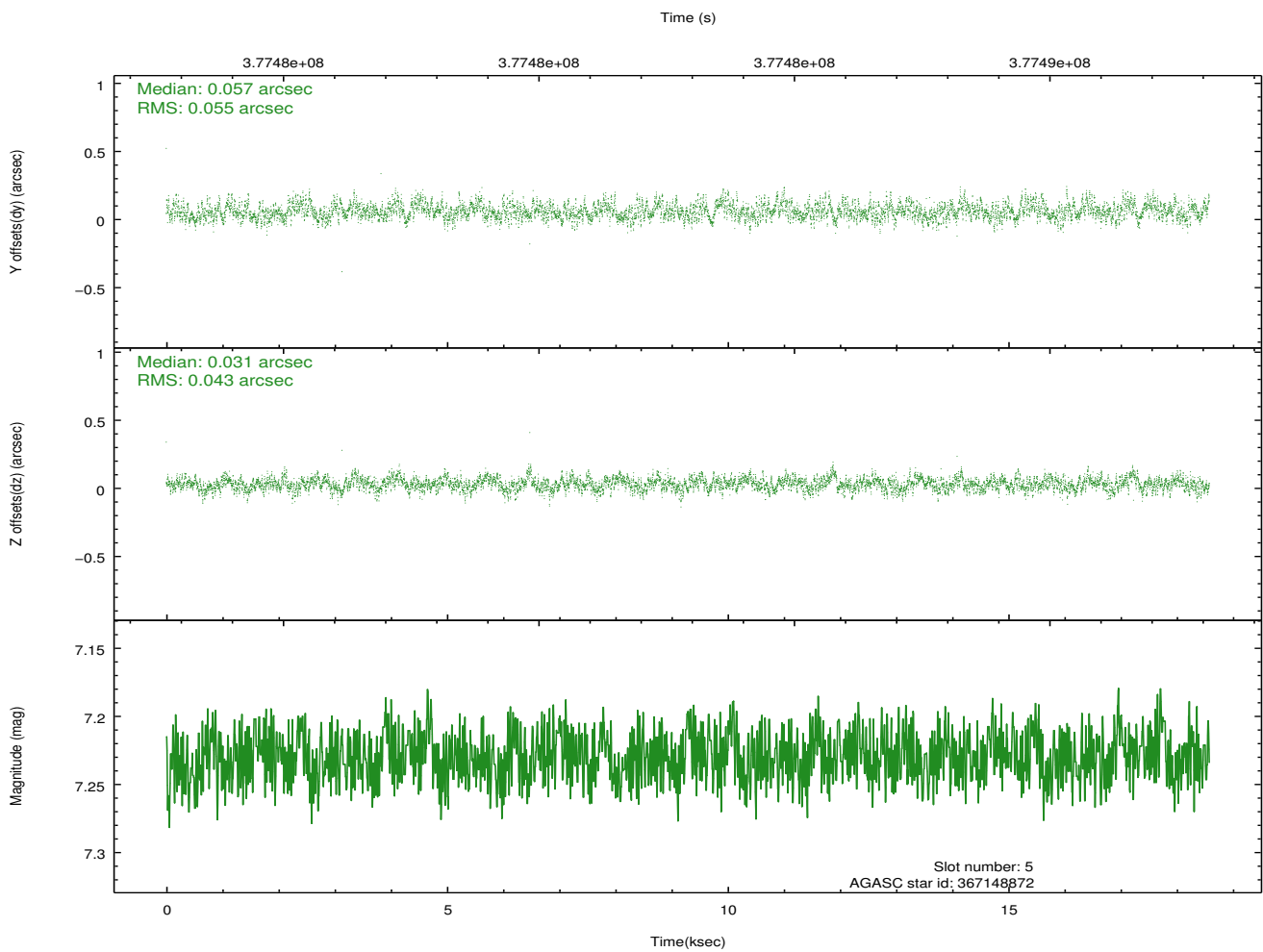
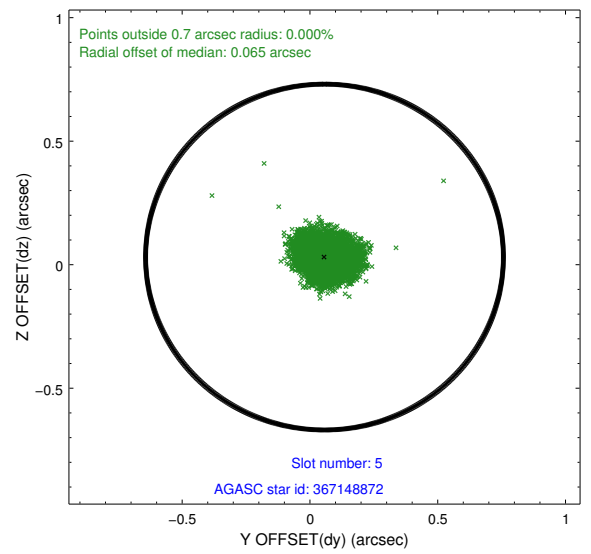
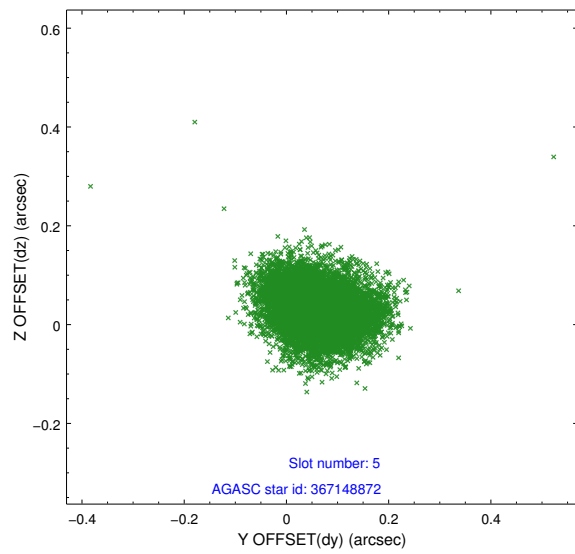
### 2.4.1 Slot 3



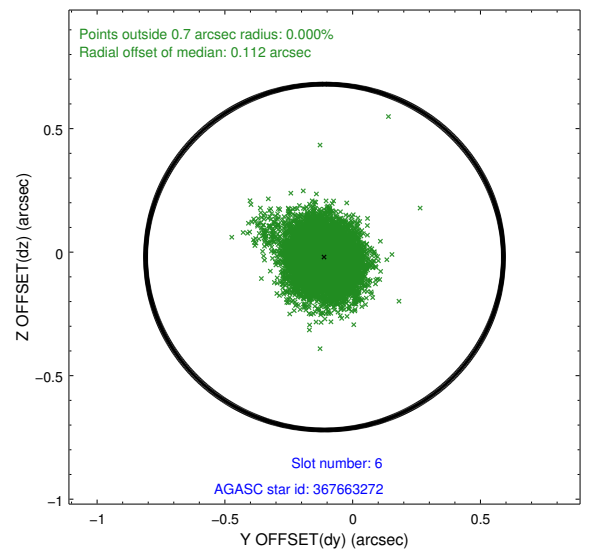
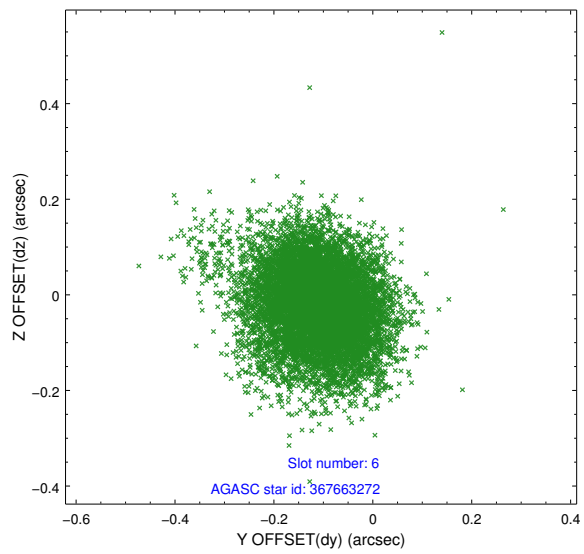
## 2.4.2 Slot 4



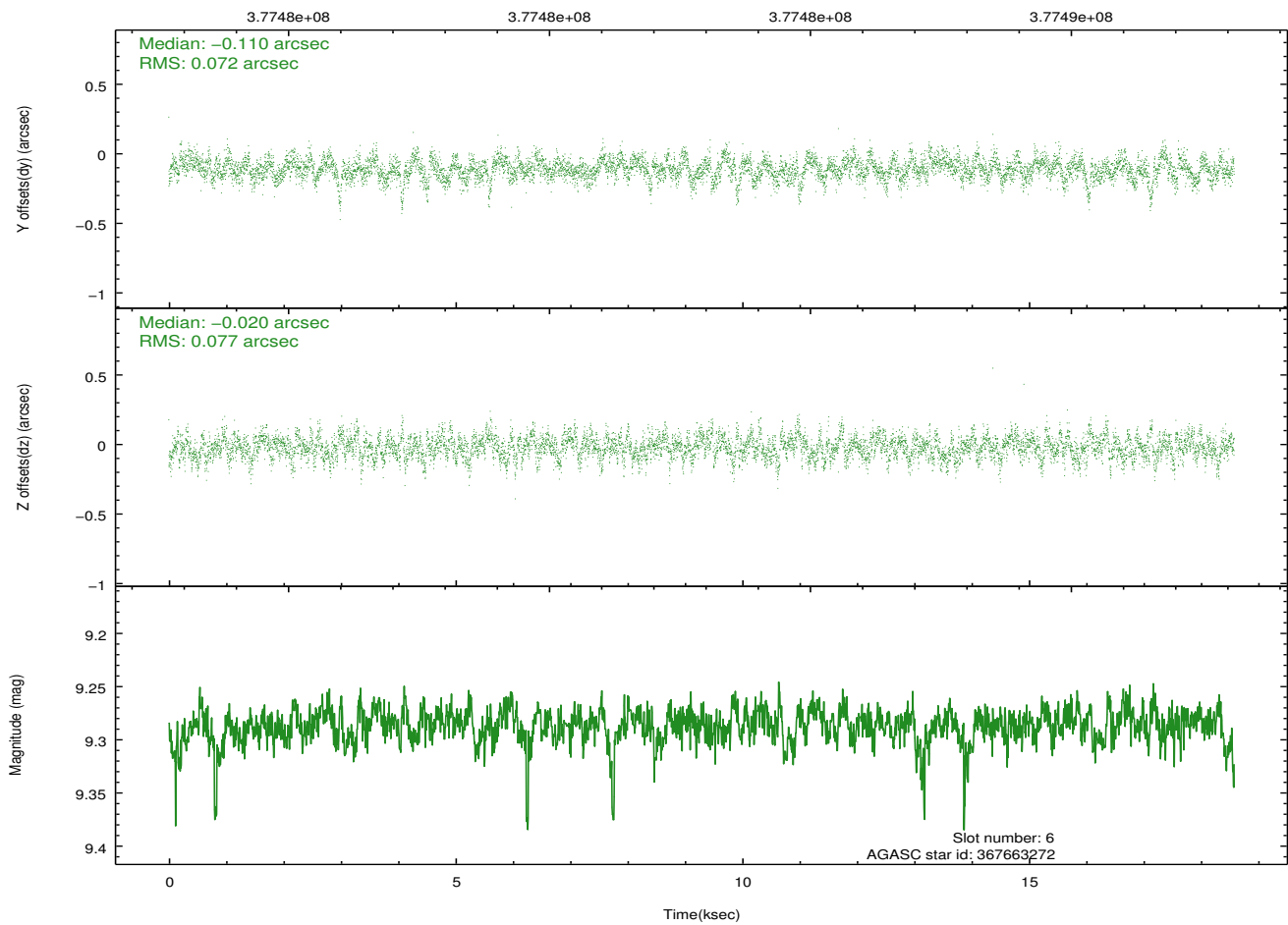
### 2.4.3 Slot 5



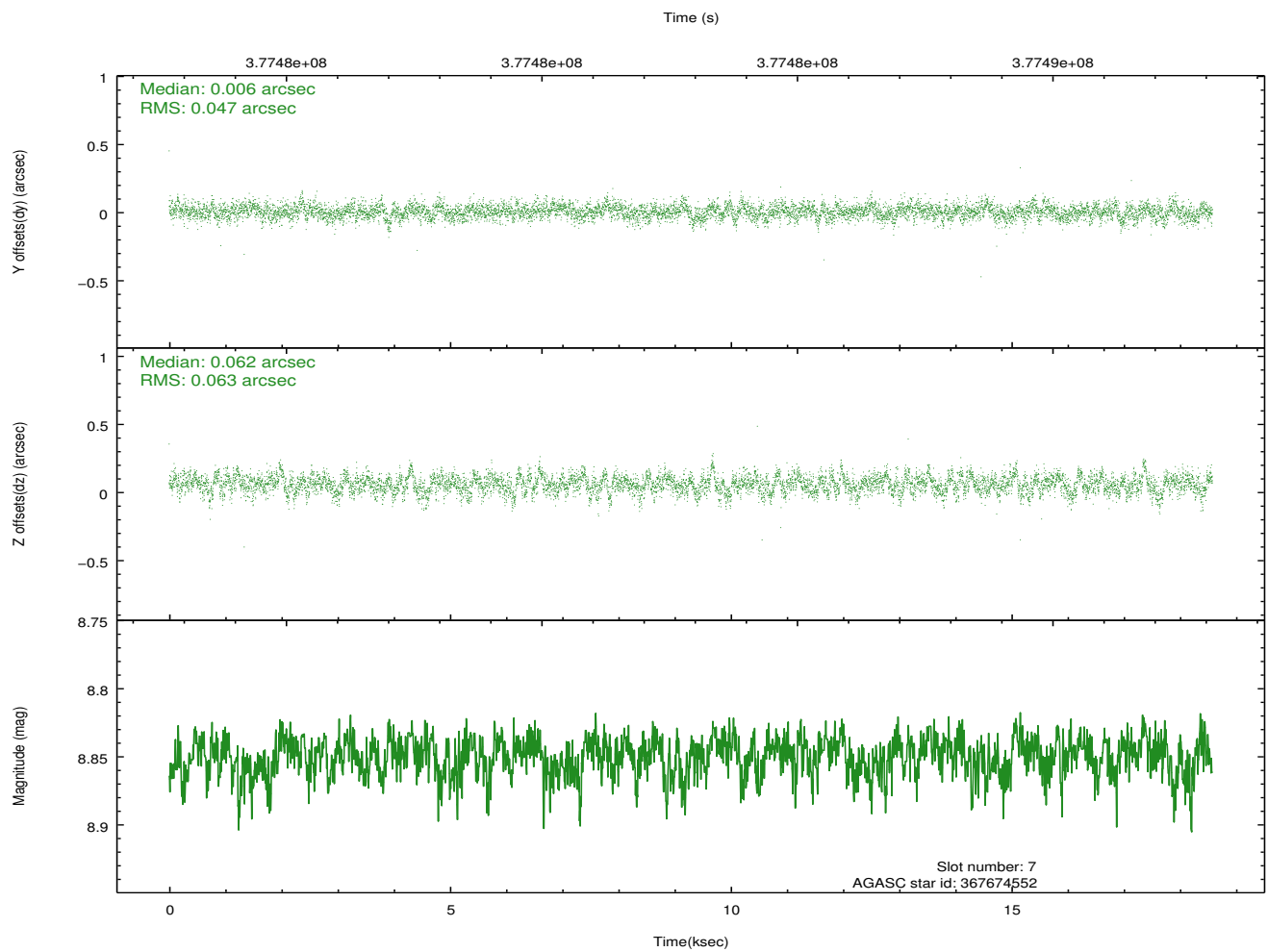
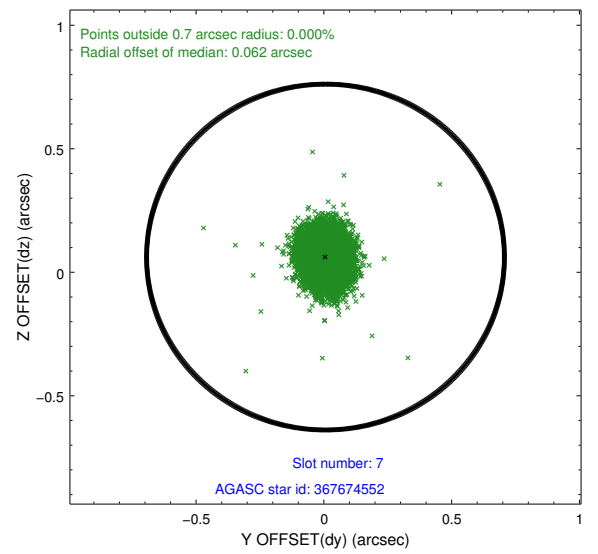
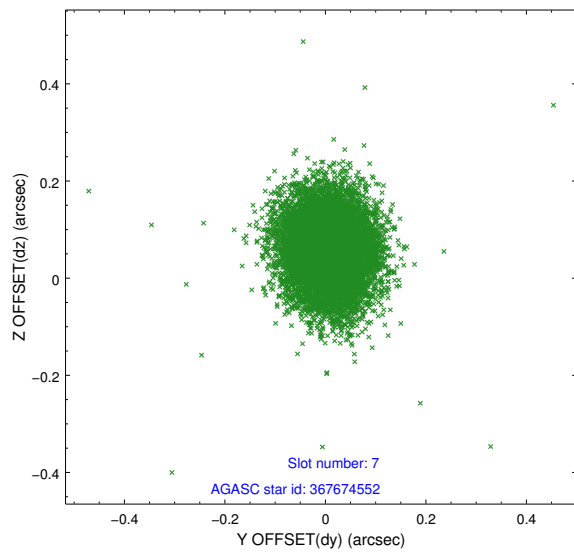
## 2.4.4 Slot 6



Time (s)

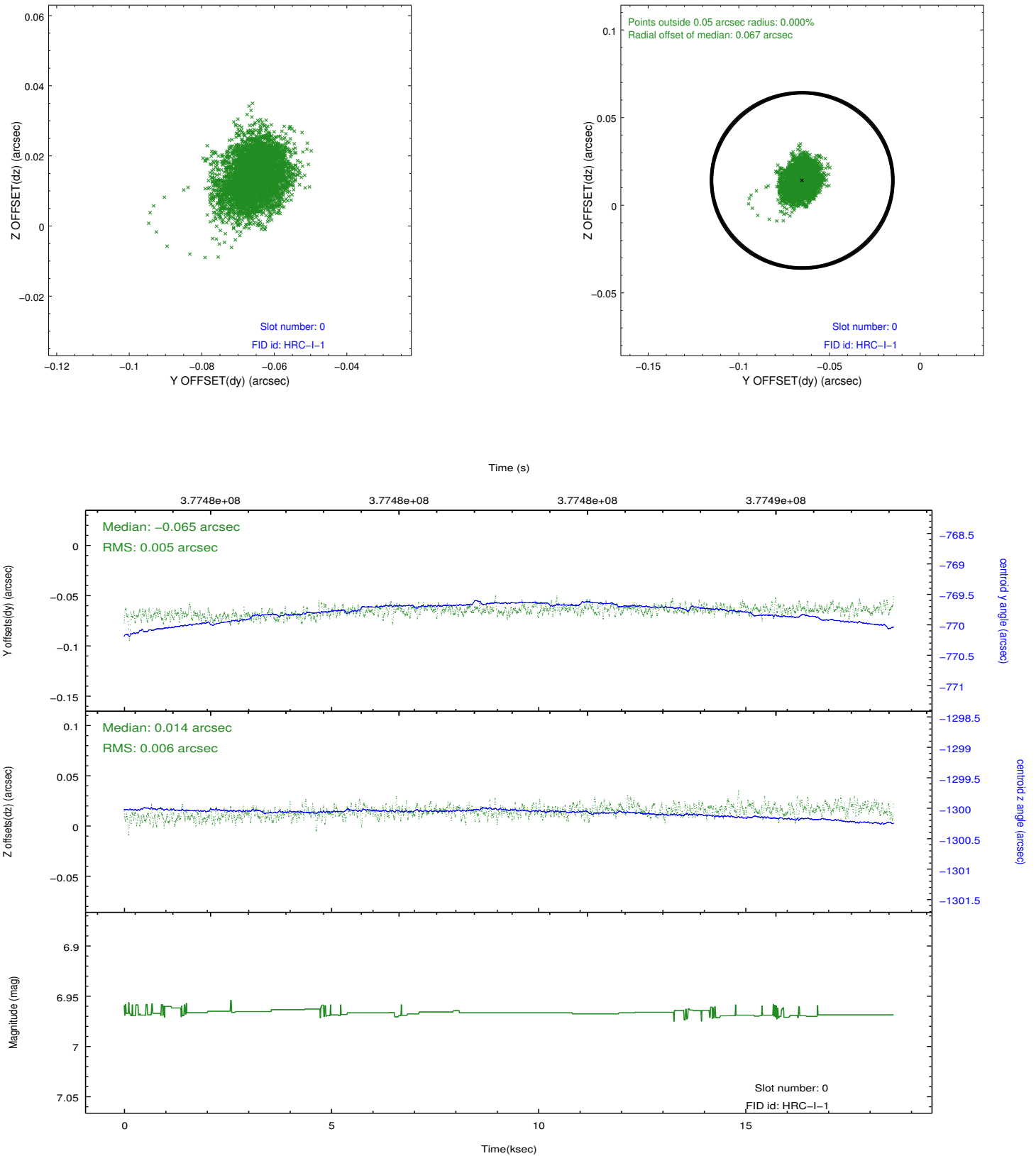


## 2.4.5 Slot 7

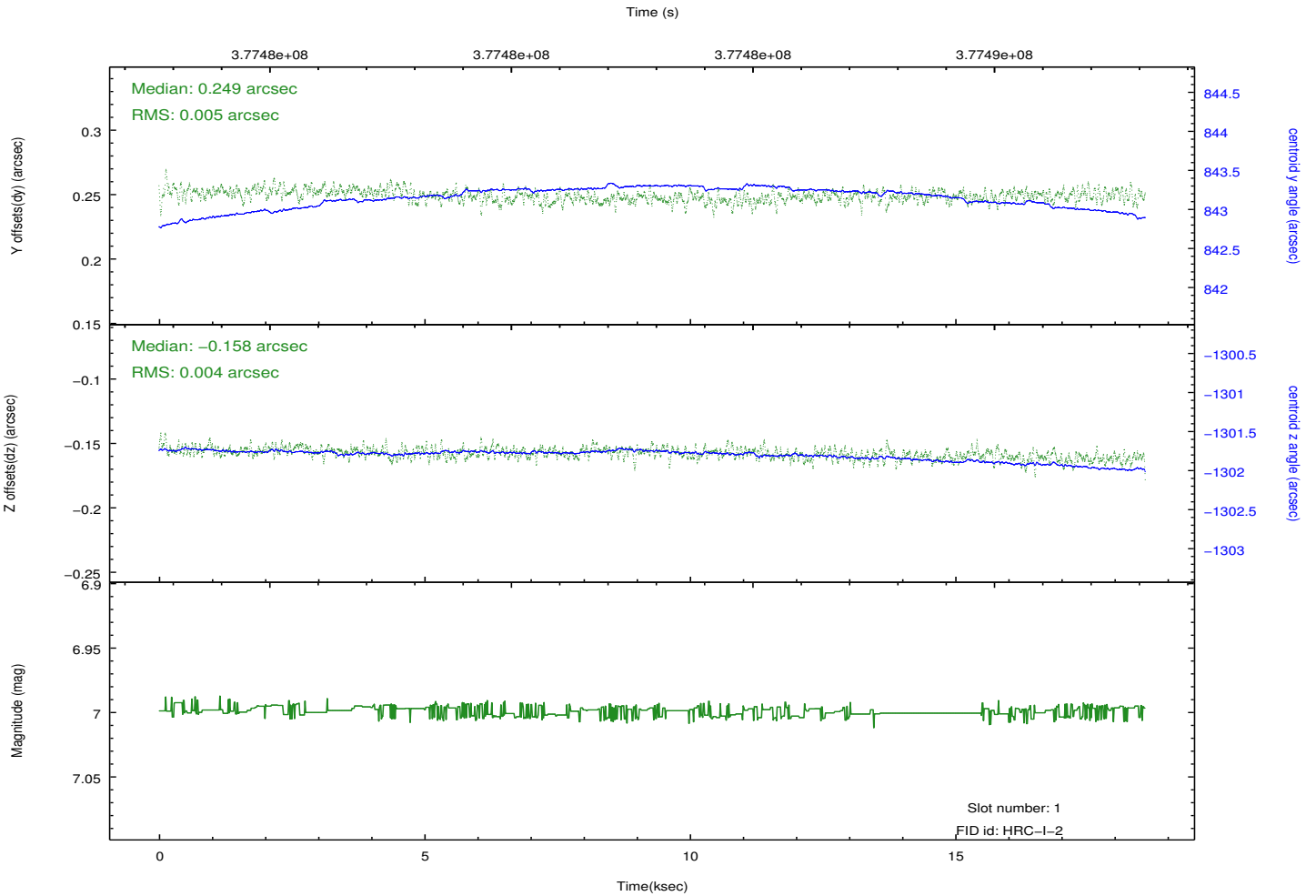
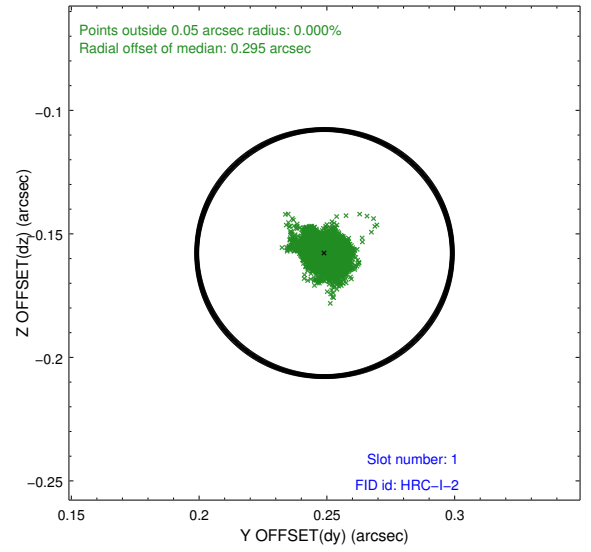
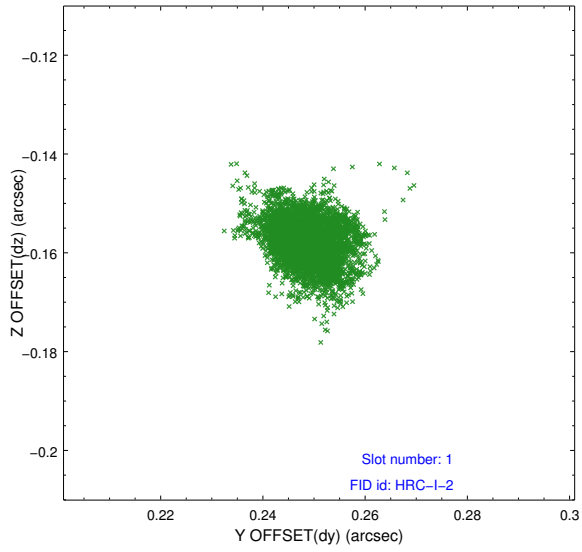


## 2.5 FID Slots

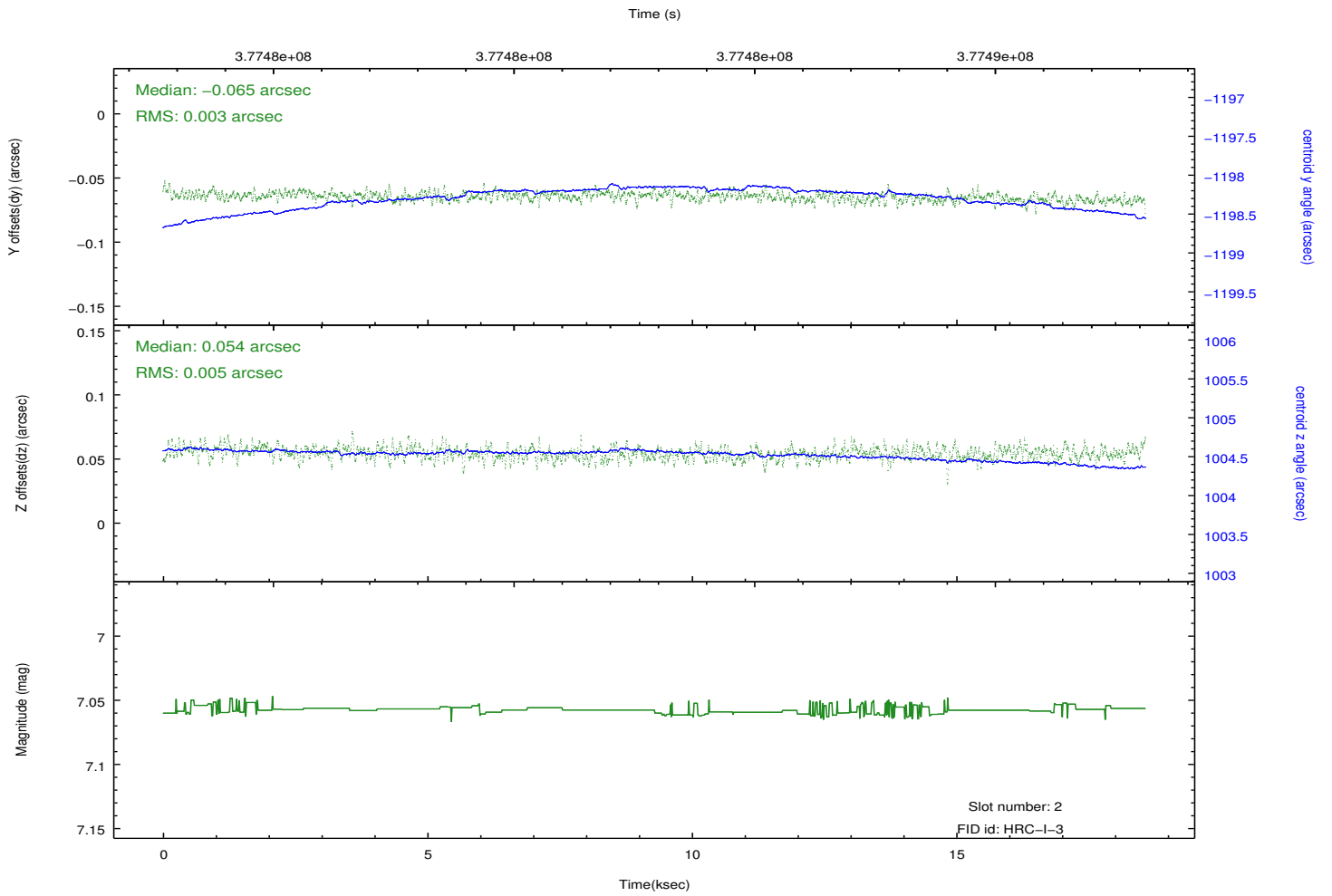
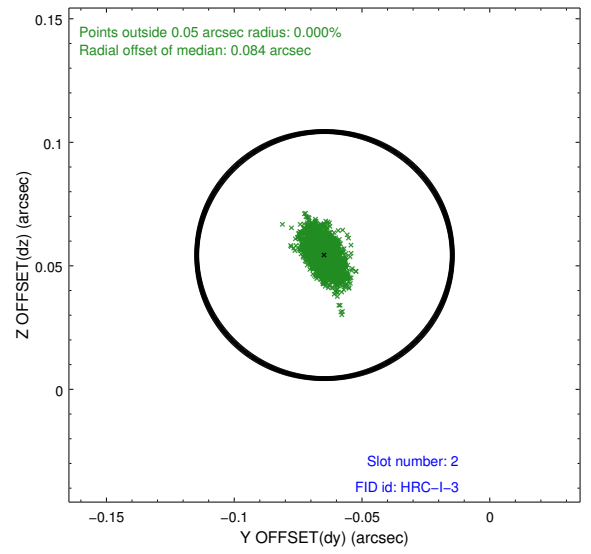
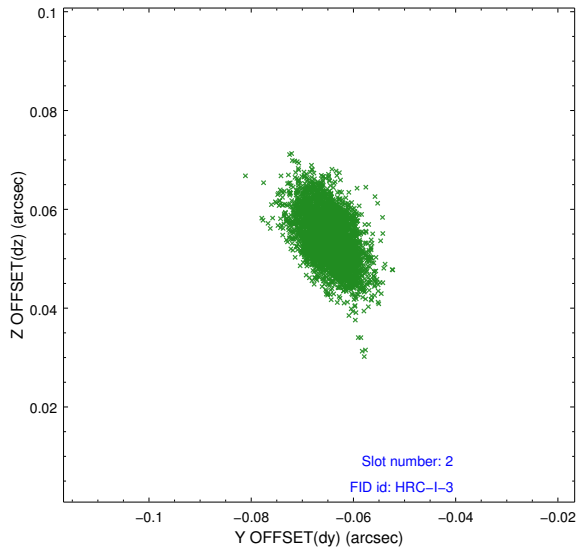
### 2.5.1 Slot 0



## 2.5.2 Slot 1



### 2.5.3 Slot 2



# A Summary

## A.1 Status

V&V Scientist	Jen Lauer
V&V Date (YYYY-MM-DD)	2012.08.22
V&V Edition	1
V&V Disposition and Status	OK
V&V Charge Time	18.578125939071

## A.2 Comments

Joint Proposal: CXO-XMM. Monitor constraint met.