

V&V Reference Report

L2 ASCDS Version : 8.4.5

Observation 10896 - L2 Version 2
Chandra X-Ray Center

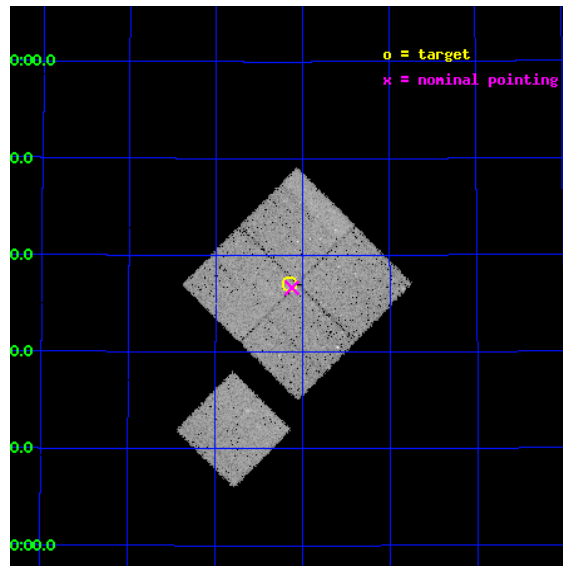
L2 Processing Date : Jun 8 2012

Contents

1	Front	2
2	OBI	3
2.1	OBI	3
2.1.1	Images	3
2.1.2	Bias	3
2.1.3	Parameters	4
2.1.4	Events	4
2.2	Compared Parameters	5
2.3	Aspect	6
2.4	Star Slots	9
2.4.1	Slot 3	9
2.4.2	Slot 4	10
2.4.3	Slot 5	11
2.4.4	Slot 6	12
2.4.5	Slot 7	13
2.5	FID Slots	14
2.5.1	Slot 0	14
2.5.2	Slot 1	15
2.5.3	Slot 2	16
A	Summary	17
A.1	Status	17
A.2	Comments	17

1 Front

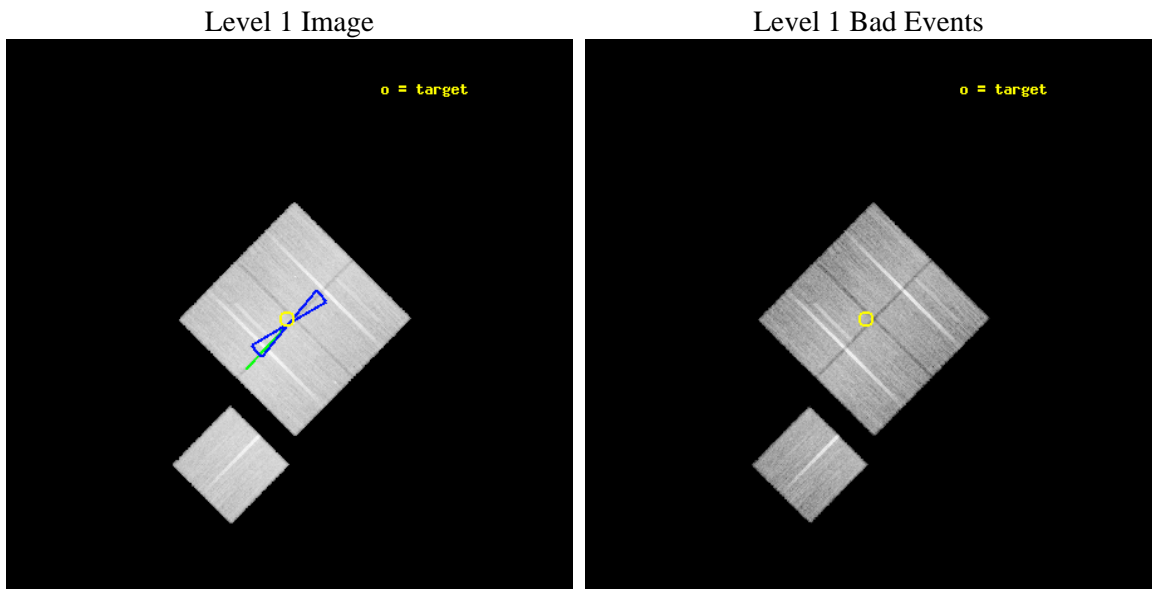
seq_num	900798	Sequence number
obs_id	10896	Observation id
title	The Evolution of Faint AGN at High Redshift	Proposal title
observer	Prof Kirpal Nandra	Principal investigator
object	AEGIS-3	Source name
dtcycle	0	
cycle	P	events from which exps? Prim/Second/Both
ra_targ	214.5375	Observer's specified target RA [deg]
dec_targ	52.617889	Observer's specified target Dec [deg]
ra_nom	214.53123111246	Nominal RA [deg]
dec_nom	52.610754792646	Nominal Dec [deg]
roll_nom	224.67627910116	Nominal Roll [deg]
revision	2	Processing version of data
ontime	23596.567834258	Sum of GTIs [s]
livetime	23288.261303963	Livetime [s]
ontime0	23599.585684597	Sum of GTIs [s]
ontime1	23599.626774311	Sum of GTIs [s]
ontime2	23599.667764604	Sum of GTIs [s]
ontime3	23596.567834258	Sum of GTIs [s]
ontime6	23596.403704047	Sum of GTIs [s]
l2events	89118	Number of level 2 events



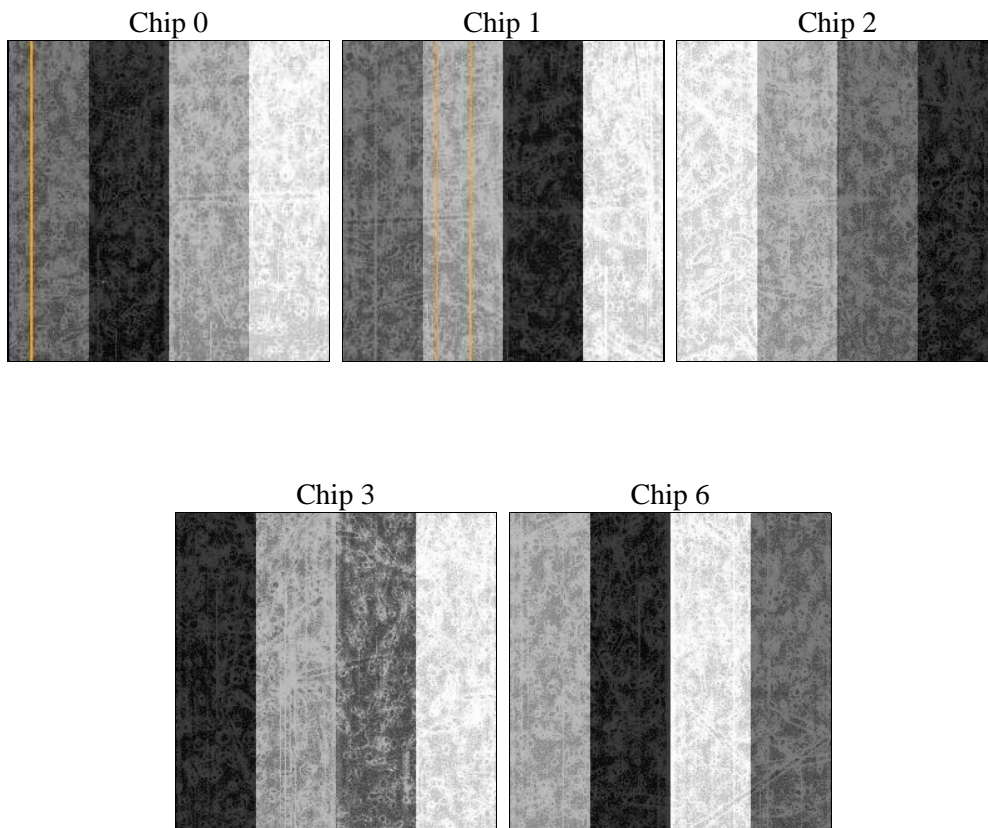
2 OBI

2.1 OBI

2.1.1 Images



2.1.2 Bias



2.1.3 Parameters

obi_num	0	Obi number	sched_exp_time	23562.000000	[s] Scheduled observation exposure time
ascdsver	8.4.5	Processing system revision	ontime	23596.567834258	Sum of GTIs [s]
caldbver	4.4.10	 	ontime0	23599.585684597	Sum of GTIs [s]
date	2012-06-08T20:38:14	Date and time of file creation	ontime1	23599.626774311	Sum of GTIs [s]
revision	2	Processing version of data	ontime2	23599.667764604	Sum of GTIs [s]
			ontime3	23596.567834258	Sum of GTIs [s]
			ontime6	23596.403704047	Sum of GTIs [s]
			l1events	1034401	Number of level 1 events

2.1.4 Events

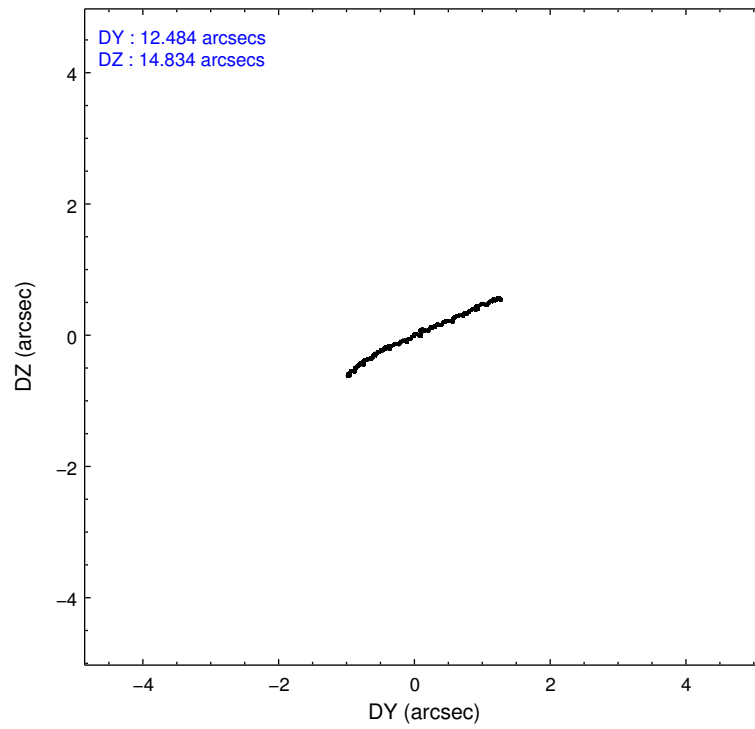
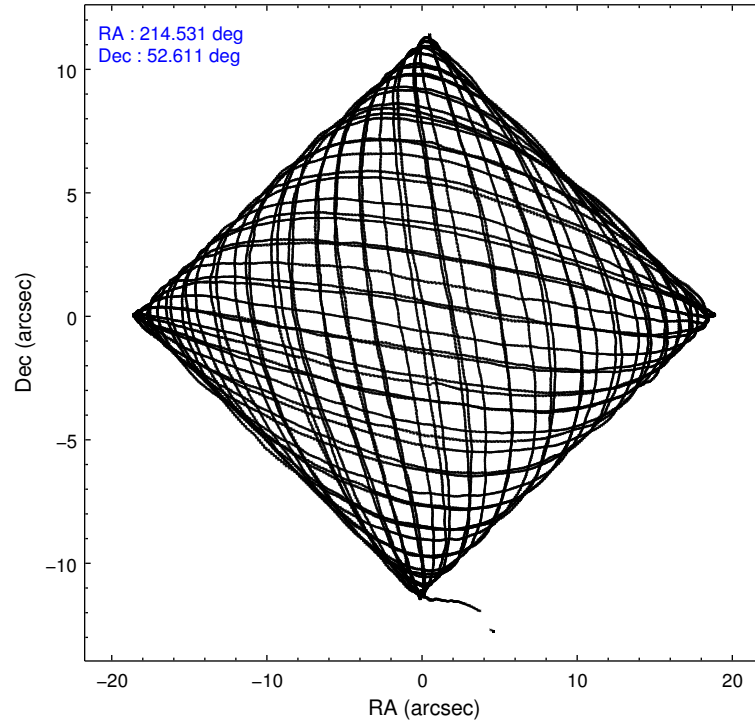
	ccd 0	ccd 1	ccd 2	ccd 3	ccd 6
level 1 events	196168	200515	218949	209569	209200
rejected events	174810	175988	198167	189867	187941
rejected %	89%	87%	90%	90%	89%

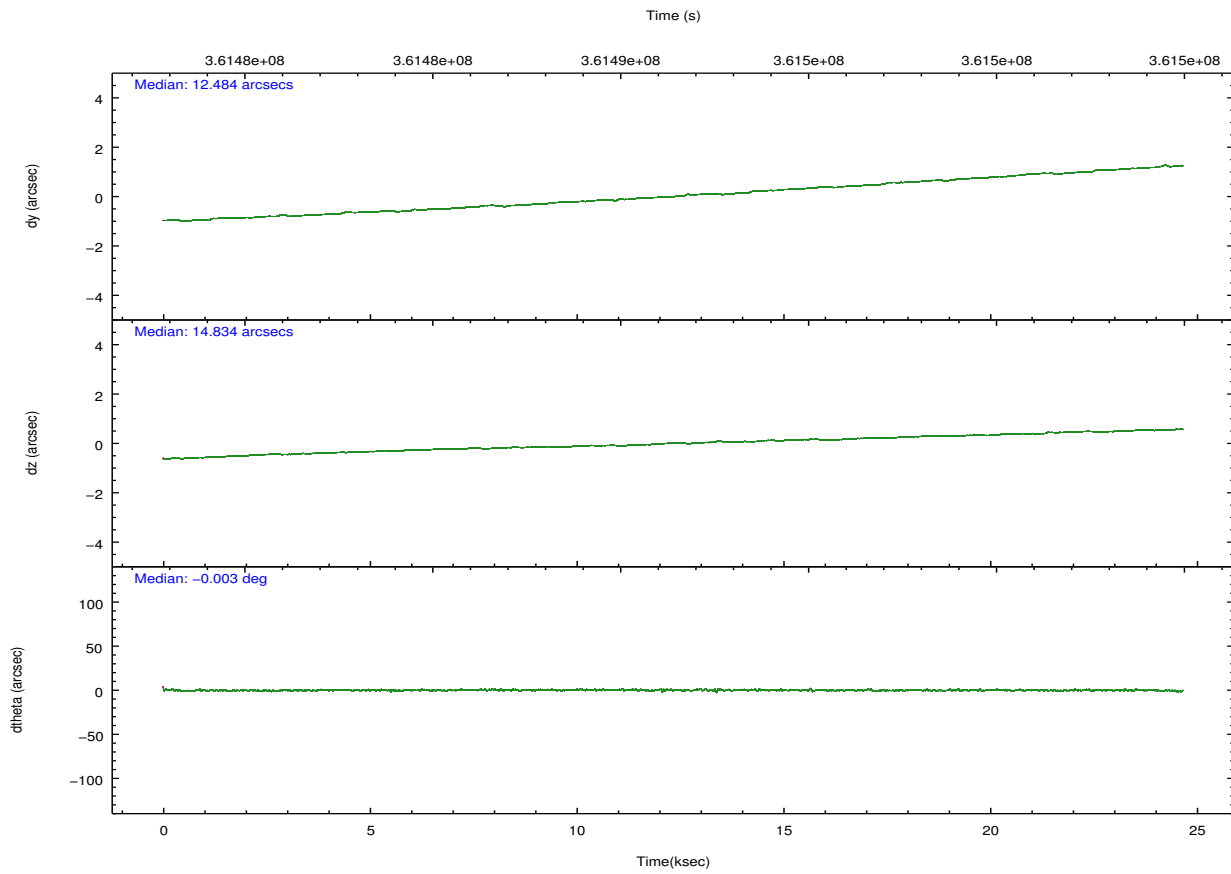
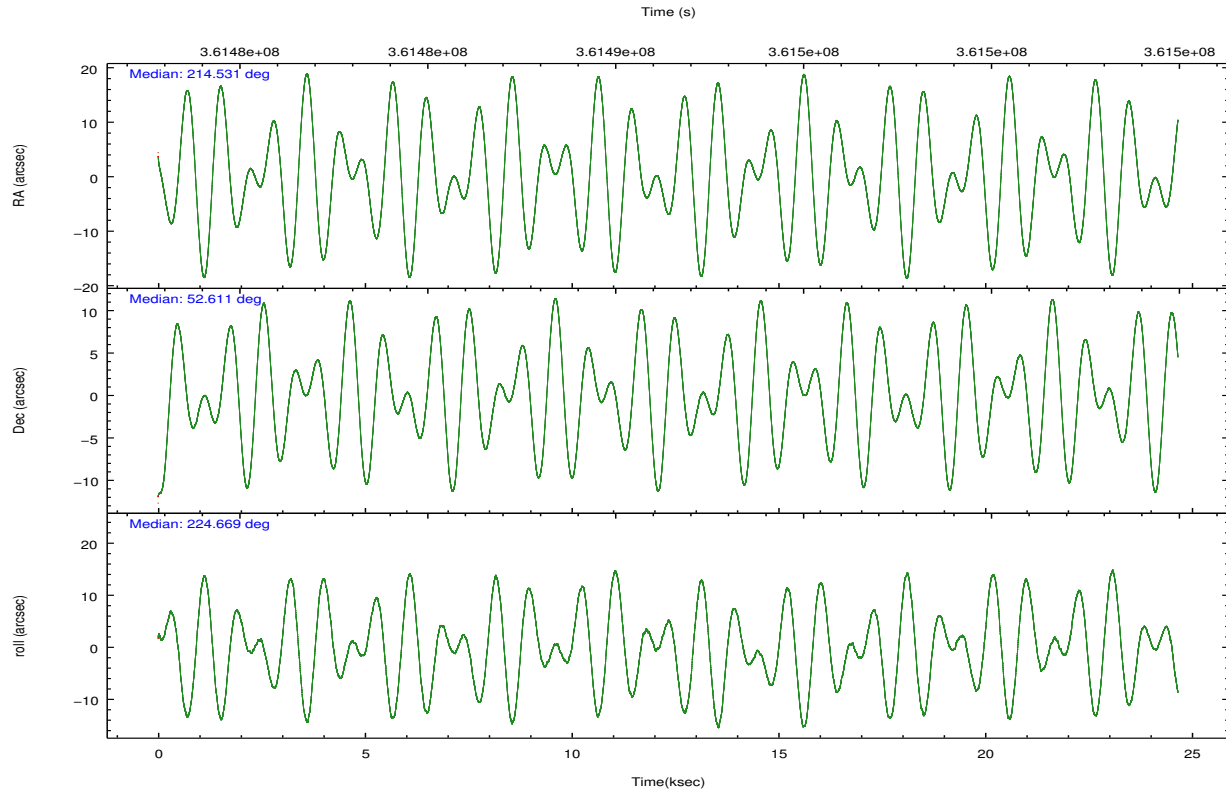
	ccd 0	ccd 1	ccd 2	ccd 3	ccd 6
grade 0 events	7364	8938	7536	6840	7410
	3%	4%	3%	3%	3%
grade 1 events	107	116	126	128	102
	0%	0%	0%	0%	0%
grade 2 events	5219	5634	5036	4373	4572
	2%	2%	2%	2%	2%
grade 3 events	2376	2578	2110	2158	2299
	1%	1%	0%	1%	1%
grade 4 events	2282	2466	2165	2248	2361
	1%	1%	0%	1%	1%
grade 5 events	7489	8229	6970	8712	8188
	3%	4%	3%	4%	3%
grade 6 events	4123	4915	3943	4090	4624
	2%	2%	1%	1%	2%
grade 7 events	167208	167639	191063	181020	179644
	85%	83%	87%	86%	85%

2.2 Compared Parameters

Parameter	Planned	Actual	Parameter	Planned	Actual
Instrument	ACIS	ACIS	Obspar format version number	7	7
Detector	ACIS-01236	ACIS-01236	Obspar file type	PREDICTED	ACTUAL
Grating	NONE	NONE	Obspar update status	NONE	UPDATED
Data mode	VFAINT	VFAINT	CCD I0 on	Y	Y
Observation mode	POINTING	POINTING	CCD I1 on	Y	Y
[deg] Pointing RA	214.543051	214.5312311124604	CCD I2 on	Y	Y
[deg] Pointing Dec	52.637306	52.61075479264635	CCD I3 on	Y	Y
[deg] Pointing Roll	224.458205	224.6762791011604	CCD S0 on	N	N
[deg] Roll angle	50.000000	50.000000	CCD S1 on	N	N
[deg] Roll tolerance	10.000000	10.000000	CCD S2 on	O1	Y
Roll constraint allows 180D rotation	Y	Y	CCD S3 on	N	N
[mm] SIM focus pos	-0.782348	-0.7809083437167272	CCD S4 on	N	N
[mm] SIM defocus	0	0.001439871863259334	CCD S5 on	N	N
[mm] SIM translation stage pos	-233.592463	-233.5874344608287	Number of optional ACIS chips dropped	0	0
[mm] SIM translation stage offset	0	-0.005018542100998502	On-chip summing requested	N	N
[s] Observation start time (MET)	361480158.184000	361478774.10945	Subarray requested	NONE	NONE
Observation start date	2009-06-15T19:08:12	2009-06-15T18:46:14	Alternating exposures requested	N	N
[s] Observation end time (MET)	361503720.184000	361504349.91073	[s] Primary exposure time	0.000000	3.1
Observation end date	2009-06-16T01:40:54	2009-06-16T01:52:29			
Read mode	TIMED	TIMED			

2.3 Aspect



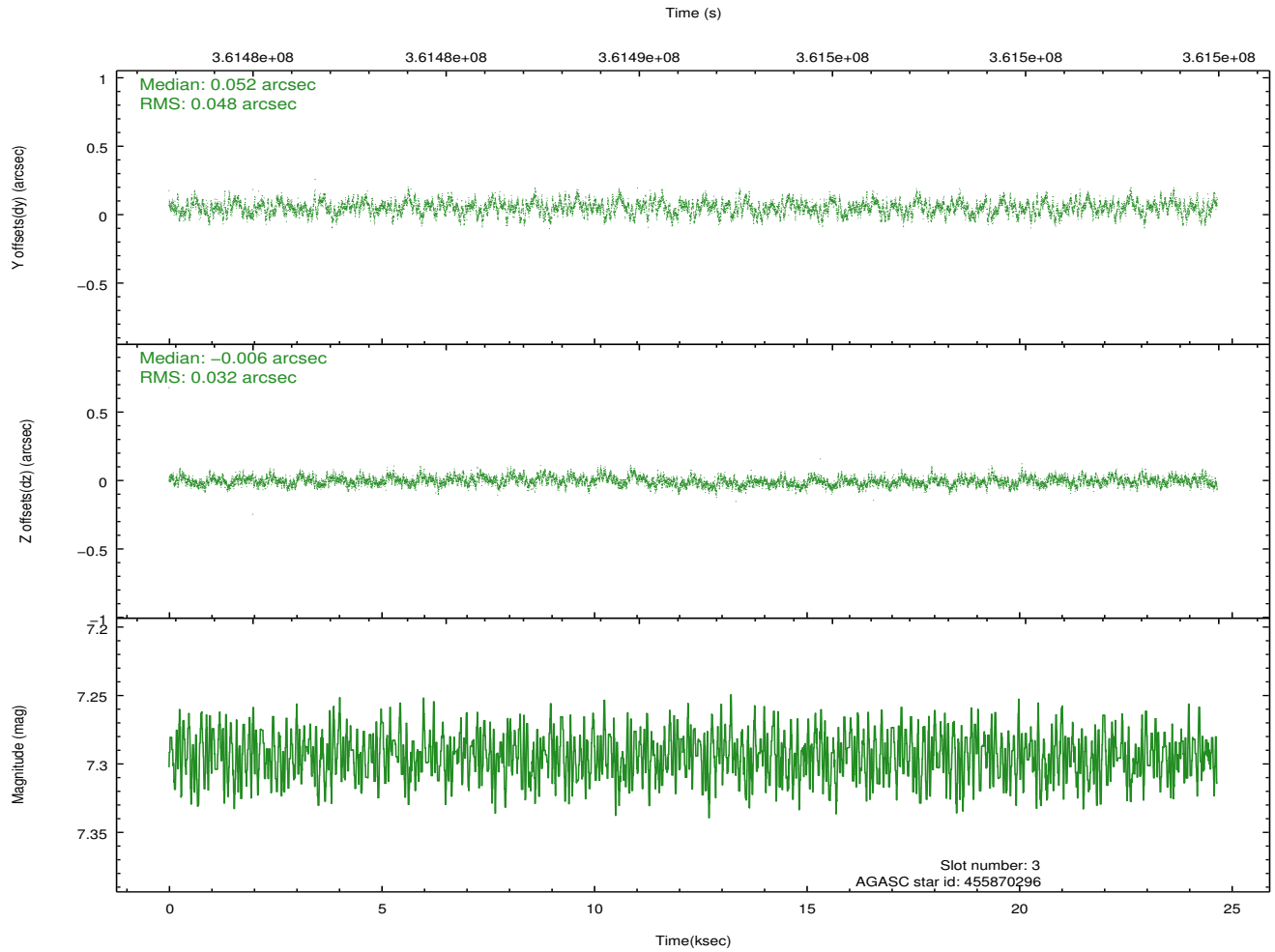
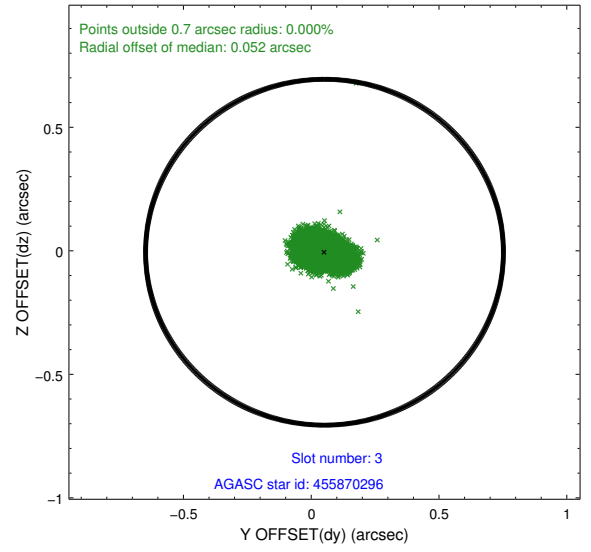
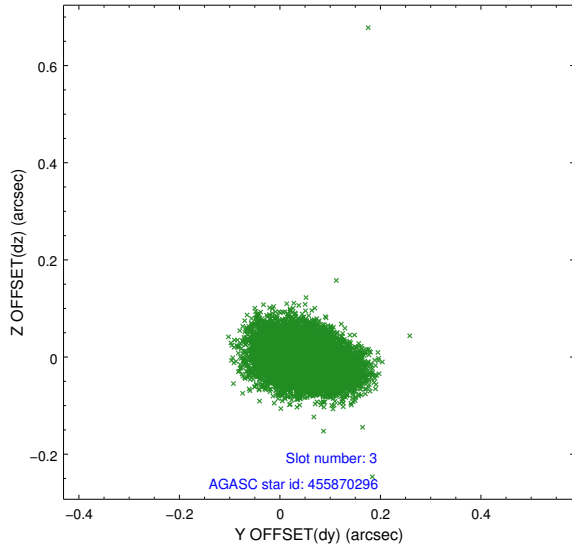


Slot Statistics

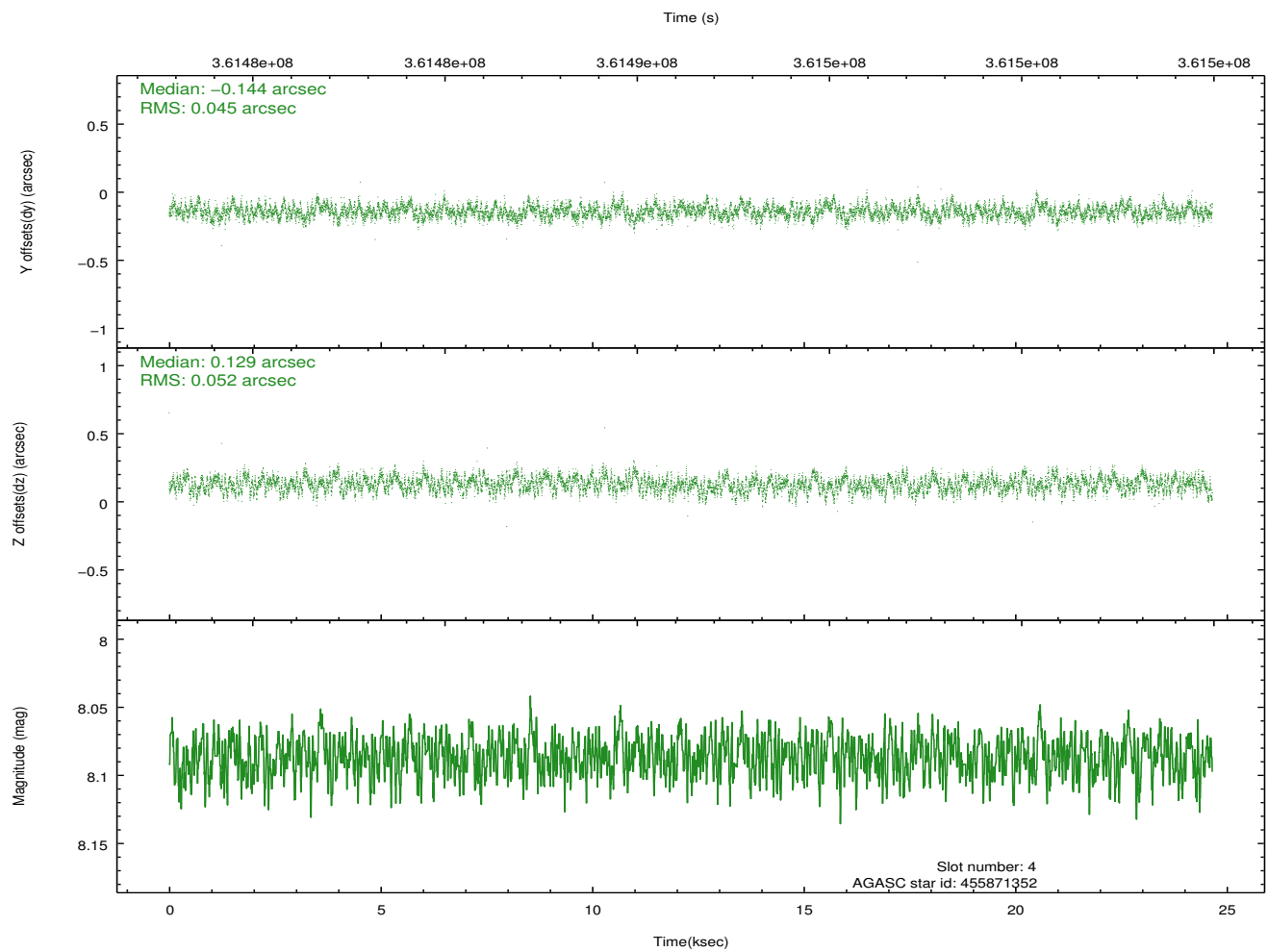
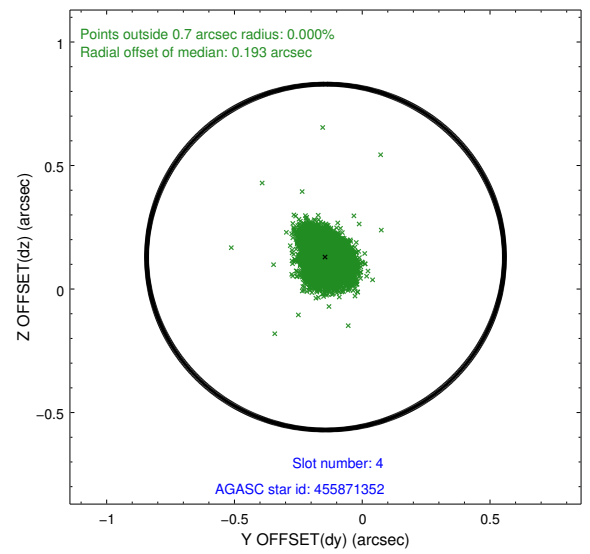
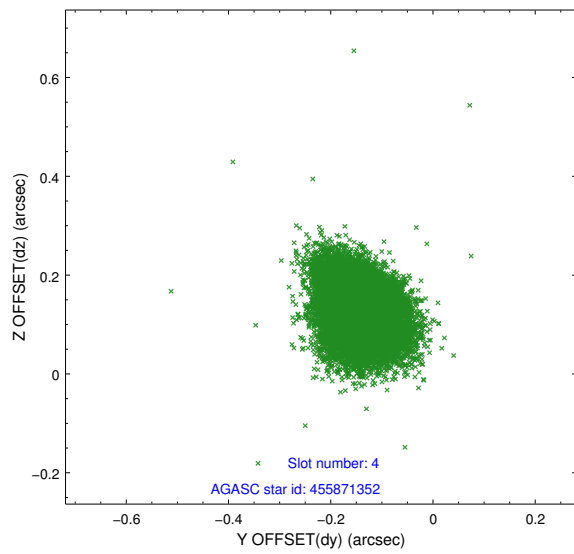
slot	status	id	mag	n_pts	med_dy	med_dz	dr1	dr2	ra	dec	mean_y	mean_z
0	FID	ACIS-I-1	7.04	6015	-0.022	0.014	0.025	0.055	0.000000	0.000000	926.98	-838.41
1	FID	ACIS-I-4	6.97	6014	0.154	0.027	0.023	0.036	0.000000	0.000000	2147.25	1061.36
2	FID	ACIS-I-5	7.03	6015	-0.228	0.031	0.030	0.045	0.000000	0.000000	-1821.09	1059.33
3	GUIDE	455870296	7.29	12030	0.052	-0.006	0.061	0.103	214.629779	52.033323	1385.85	1686.66
4	GUIDE	455871352	8.09	12022	-0.144	0.129	0.073	0.117	215.099961	52.172669	290.61	2052.05
5	GUIDE	504894728	8.81	12019	-0.044	-0.108	0.101	0.170	213.220892	52.722550	1824.76	-2256.65
6	GUIDE	505806936	7.02	12030	0.177	-0.010	0.061	0.099	213.820815	52.535927	1379.62	-852.80
7	GUIDE	505812088	8.14	12024	-0.041	-0.006	0.058	0.093	214.186617	53.263562	-1031.93	-2148.30

2.4 Star Slots

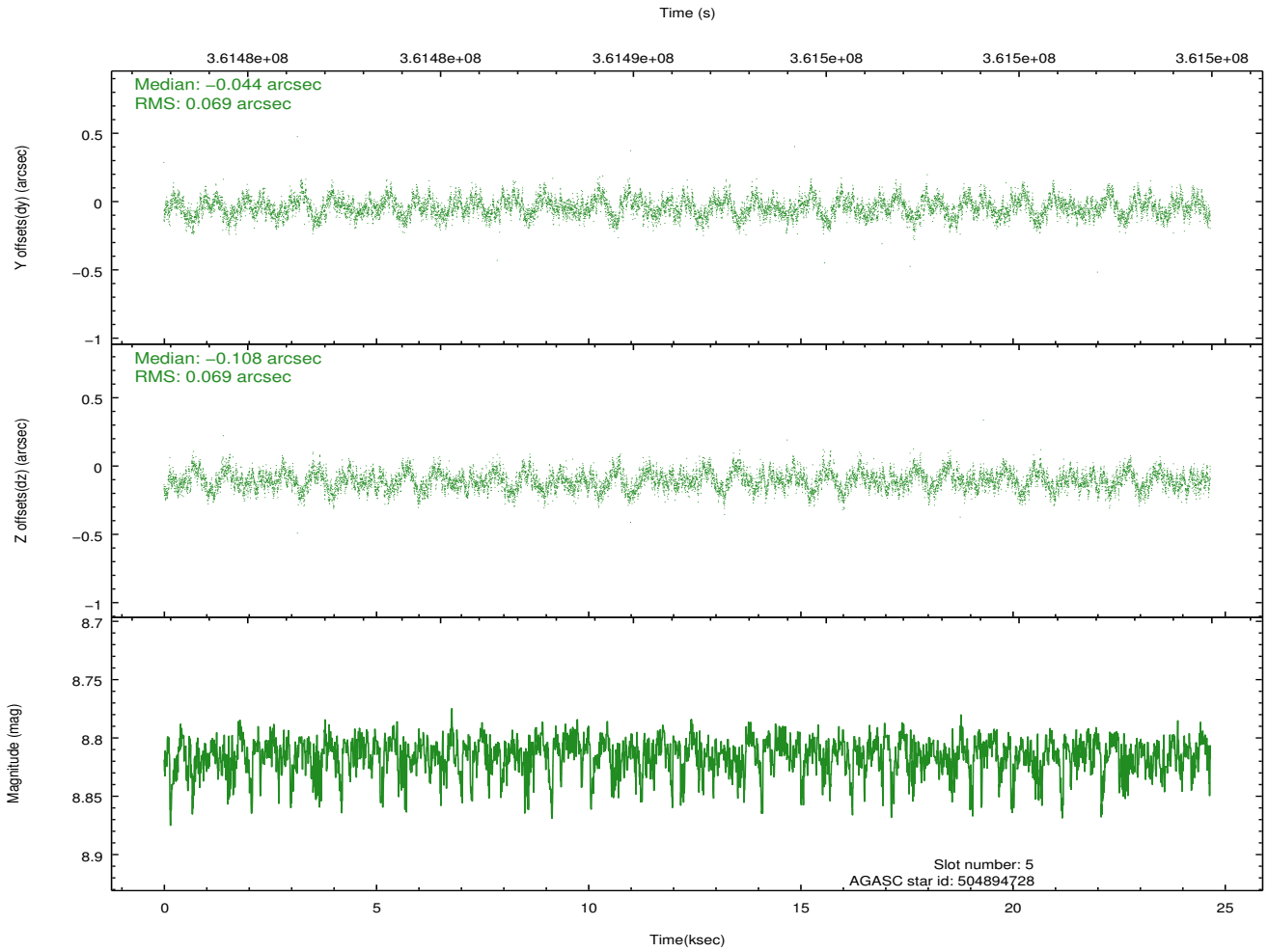
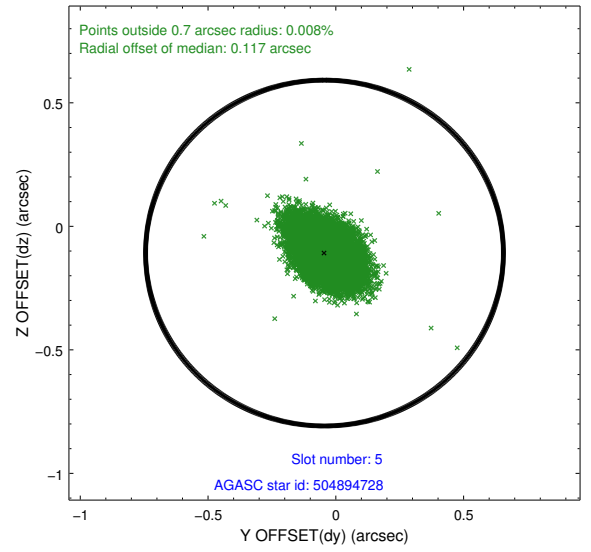
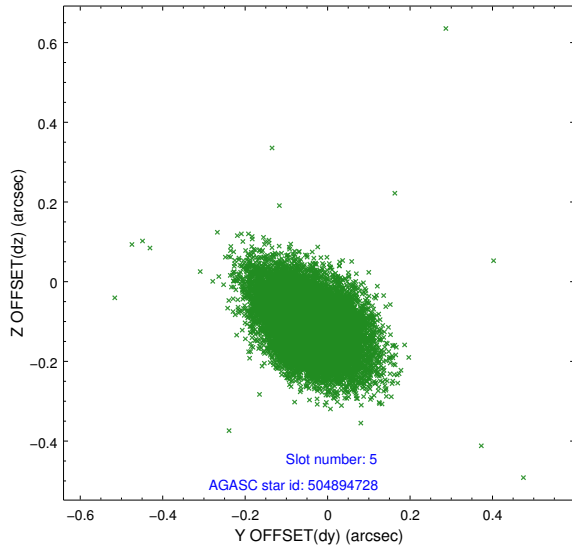
2.4.1 Slot 3



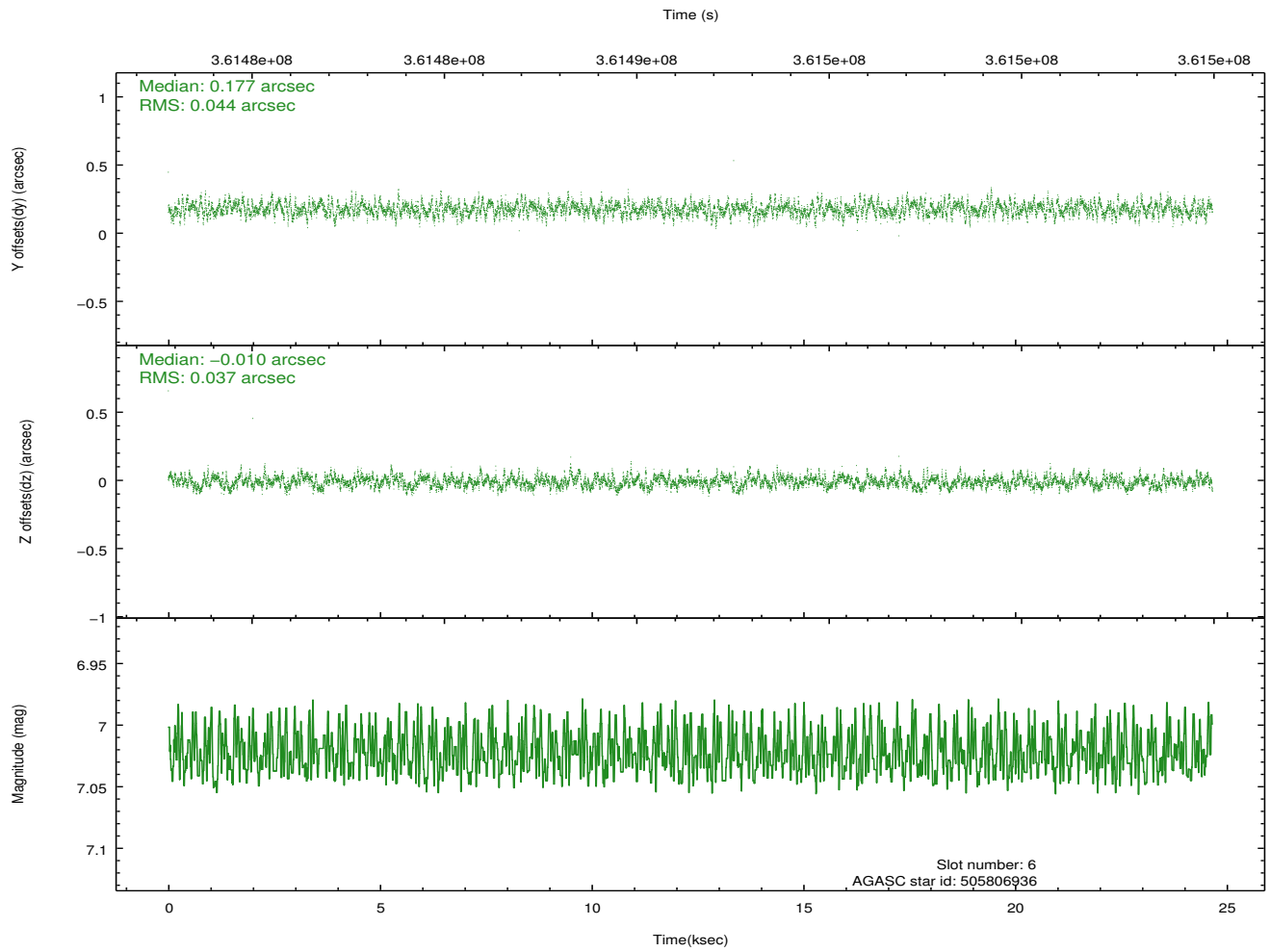
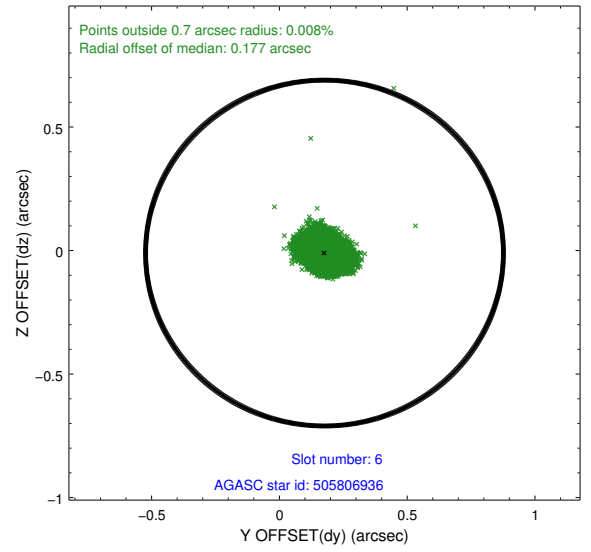
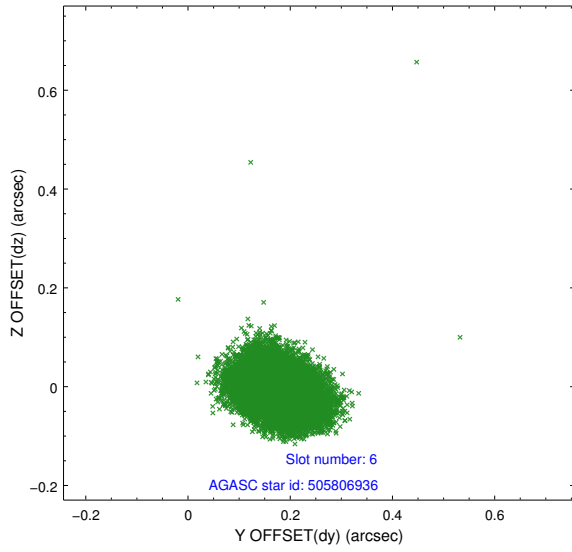
2.4.2 Slot 4



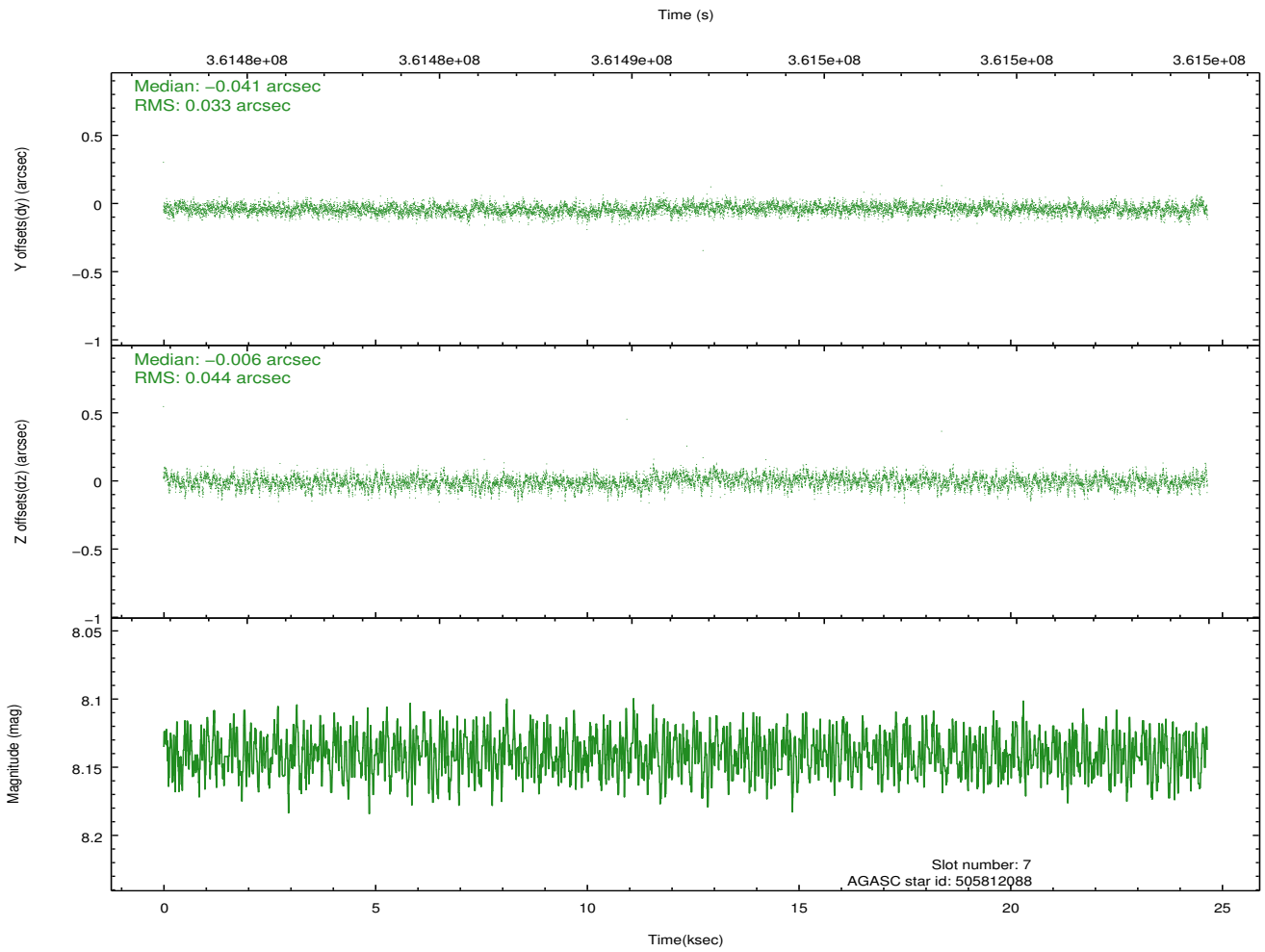
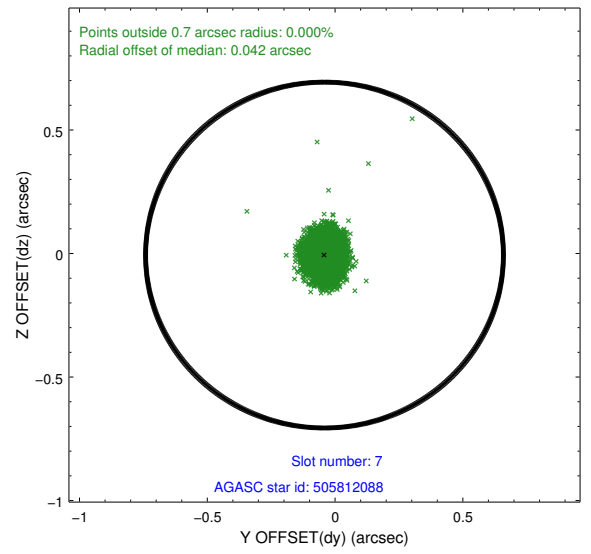
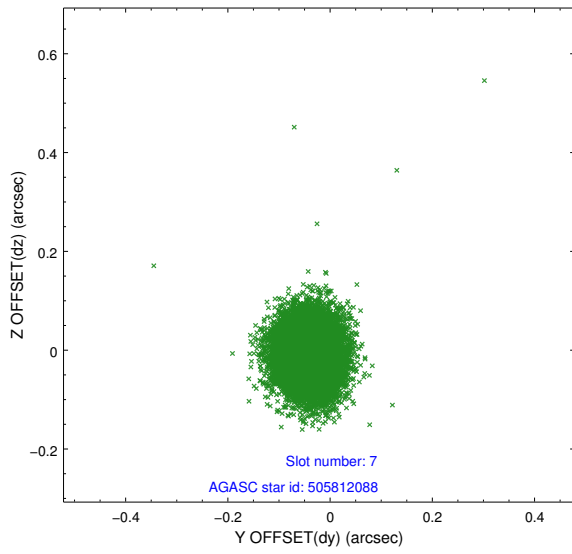
2.4.3 Slot 5



2.4.4 Slot 6

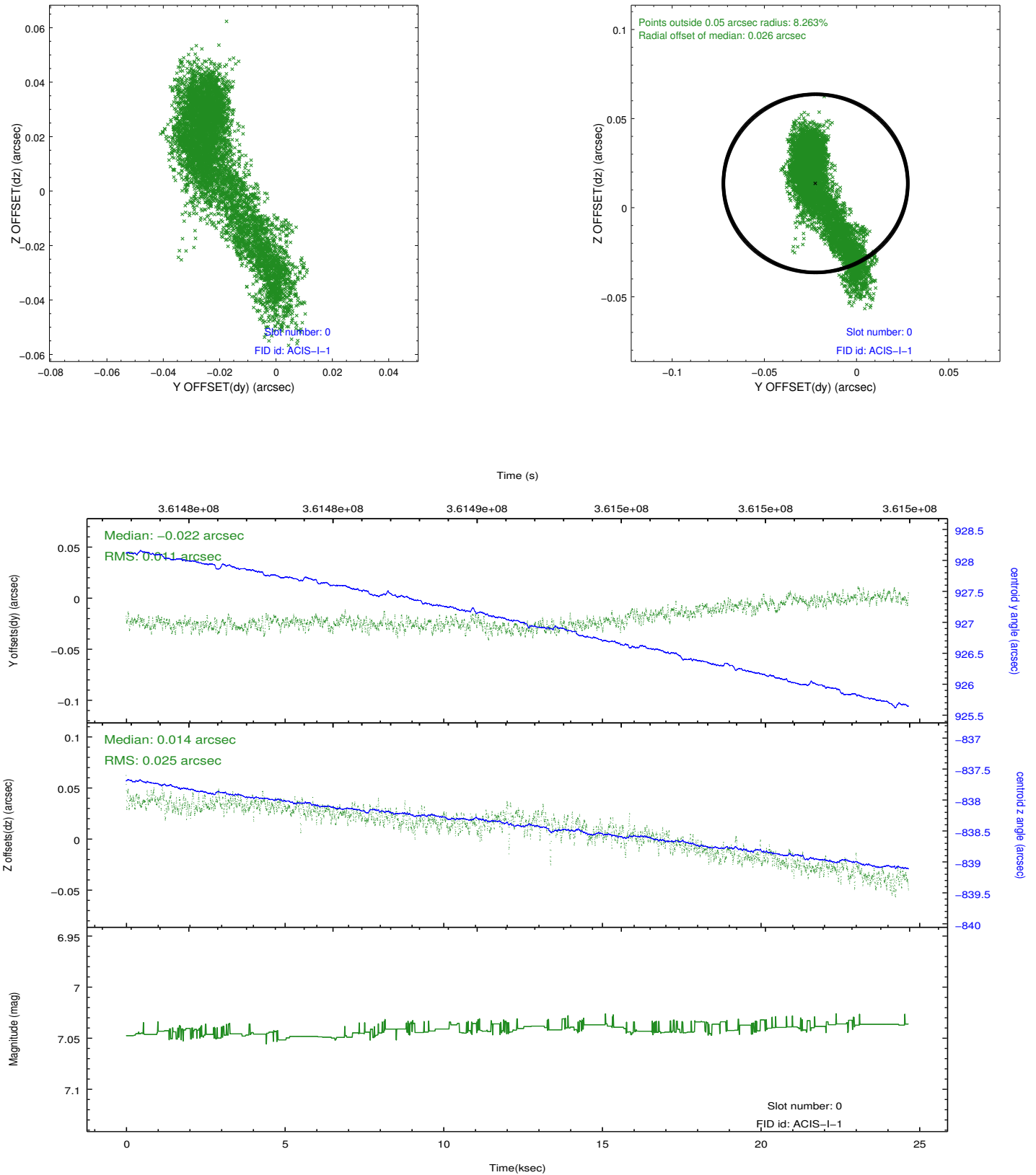


2.4.5 Slot 7

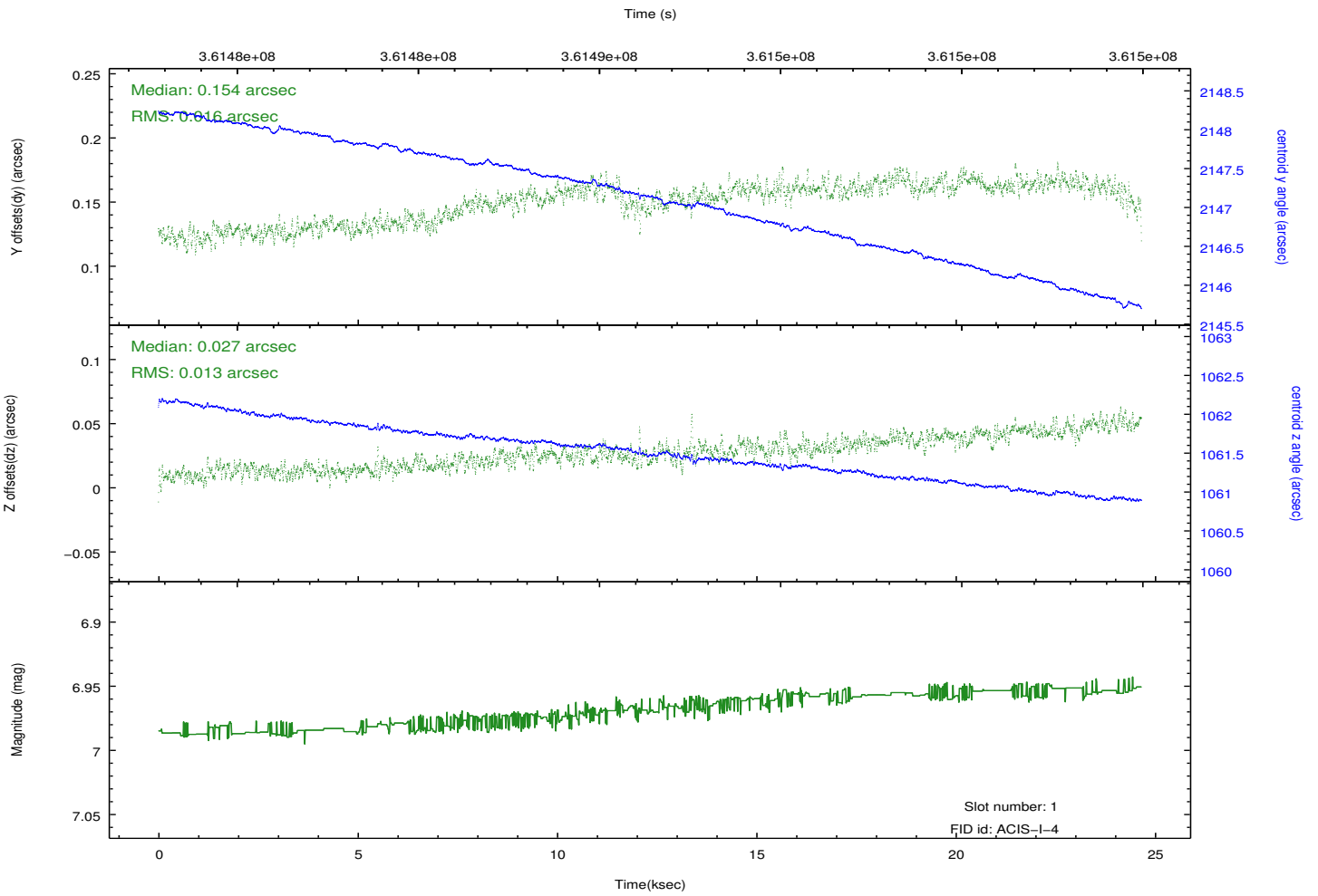
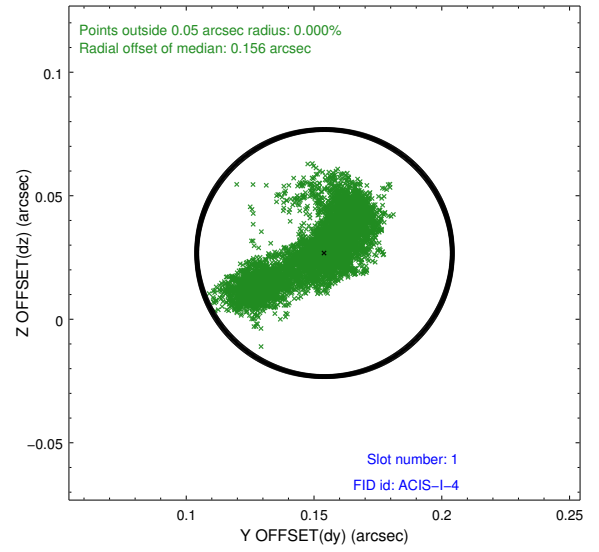
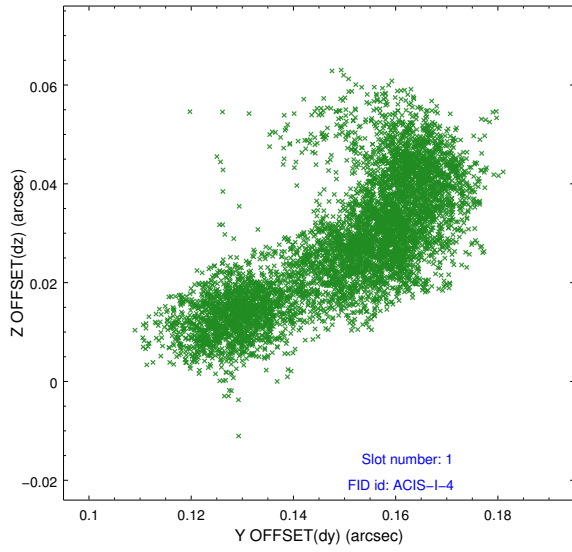


2.5 FID Slots

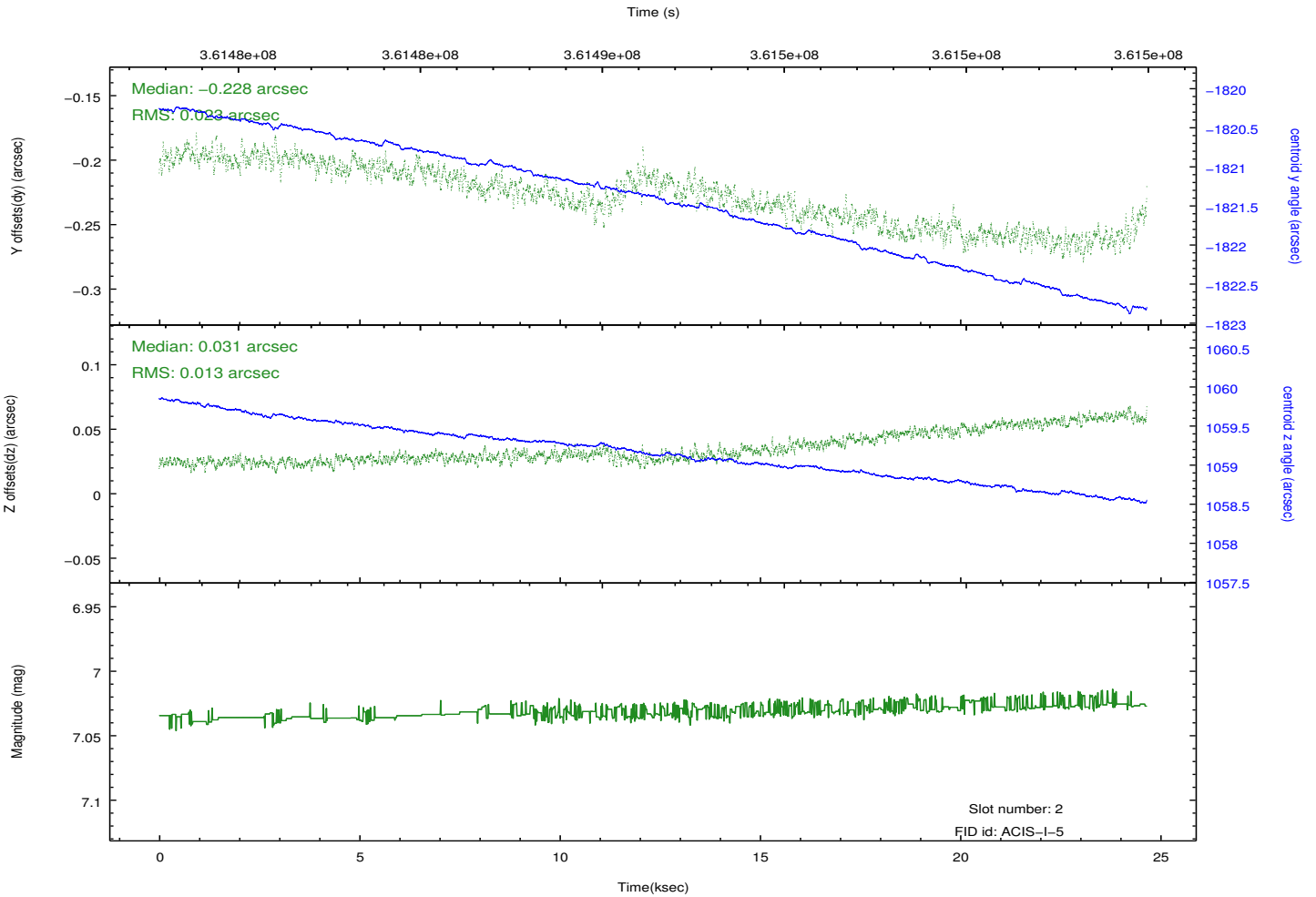
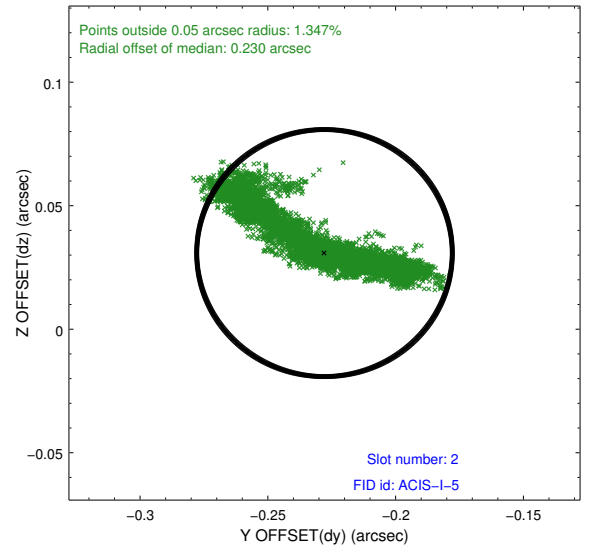
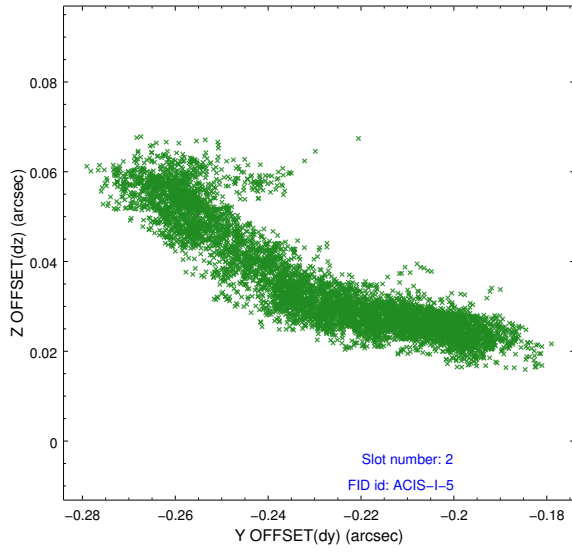
2.5.1 Slot 0



2.5.2 Slot 1



2.5.3 Slot 2



A Summary

A.1 Status

V&V Scientist	Beth Sundheim
V&V Date (YYYY-MM-DD)	2012.06.12
V&V Edition	1
V&V Disposition and Status	OK
V&V Charge Time	23.5971182

A.2 Comments

Joint proposal with Spitzer.

Roll preference met.