

V&V Reference Report

L2 ASCDS Version : 8.4.5

Observation 11566 - L2 Version 2
Chandra X-Ray Center

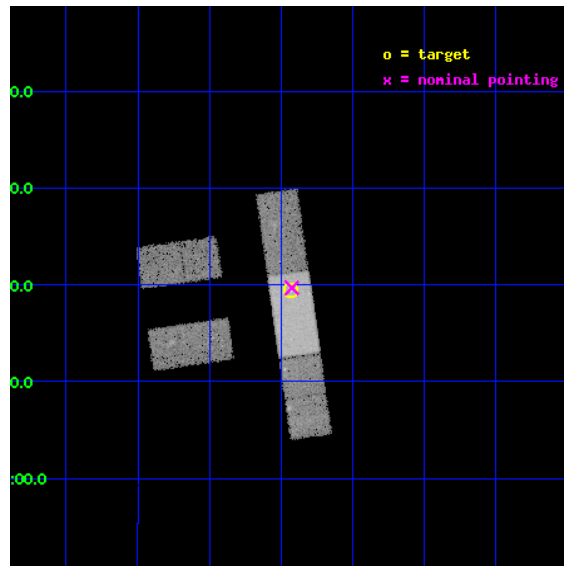
L2 Processing Date : Jul 4 2012

Contents

1	Front	2
2	OBI	3
2.1	OBI	3
2.1.1	Images	3
2.1.2	Bias	3
2.1.3	Parameters	4
2.1.4	Events	4
2.2	Compared Parameters	5
2.3	Aspect	6
2.4	Star Slots	9
2.4.1	Slot 3	9
2.4.2	Slot 4	10
2.4.3	Slot 5	11
2.4.4	Slot 6	12
2.4.5	Slot 7	13
2.5	FID Slots	14
2.5.1	Slot 0	14
2.5.2	Slot 1	15
2.5.3	Slot 2	16
A	Summary	17
A.1	Status	17
A.2	Comments	17

1 Front

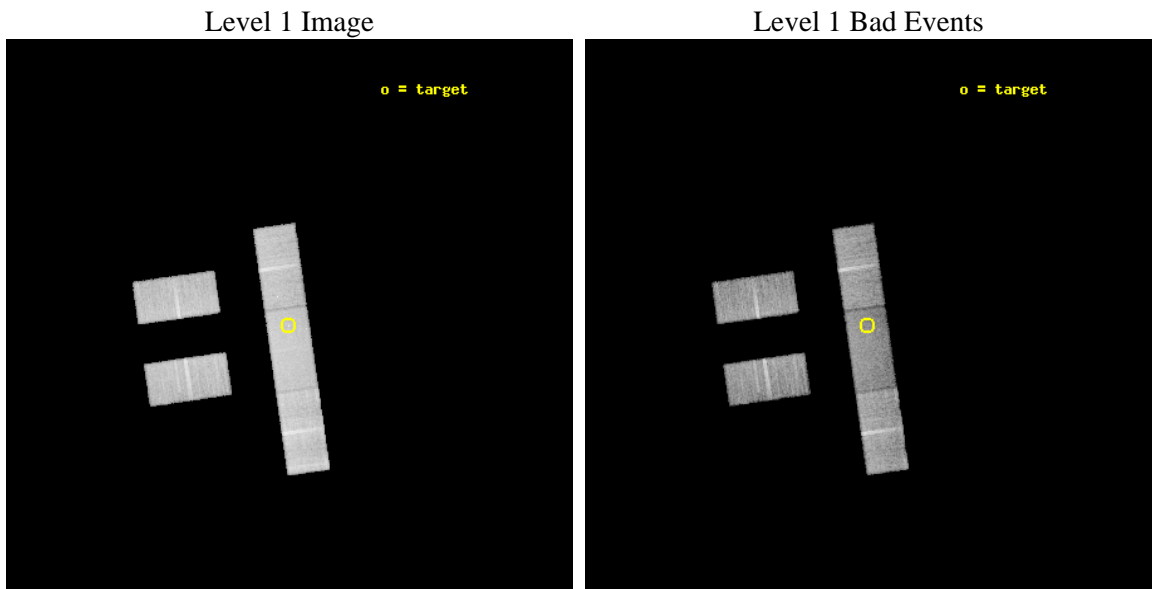
seq_num	702152	Sequence number
obs_id	11566	Observation id
title	The Size of Quasar Non-Thermal/X-ray Emission Regions	Proposal tit
observer	Prof. Christopher Kochanek	Principal investigator
object	SDSS0924+0219	Source name
dtcycle	0	
cycle	P	events from which exps? Prim/Second/Both
ra_targ	141.232917	Observer's specified target RA [deg]
dec_targ	2.323583	Observer's specified target Dec [deg]
ra_nom	141.23096730426	Nominal RA [deg]
dec_nom	2.3280269060769	Nominal Dec [deg]
roll_nom	81.839136835308	Nominal Roll [deg]
revision	2	Processing version of data
ontime	22062.59984535	Sum of GTIs [s]
livetime	21542.537642498	Livetime [s]
ontime2	22062.59984535	Sum of GTIs [s]
ontime3	22060.858855188	Sum of GTIs [s]
ontime6	22062.59984535	Sum of GTIs [s]
ontime7	22062.59984535	Sum of GTIs [s]
ontime8	22062.59984535	Sum of GTIs [s]
l2events	81193	Number of level 2 events



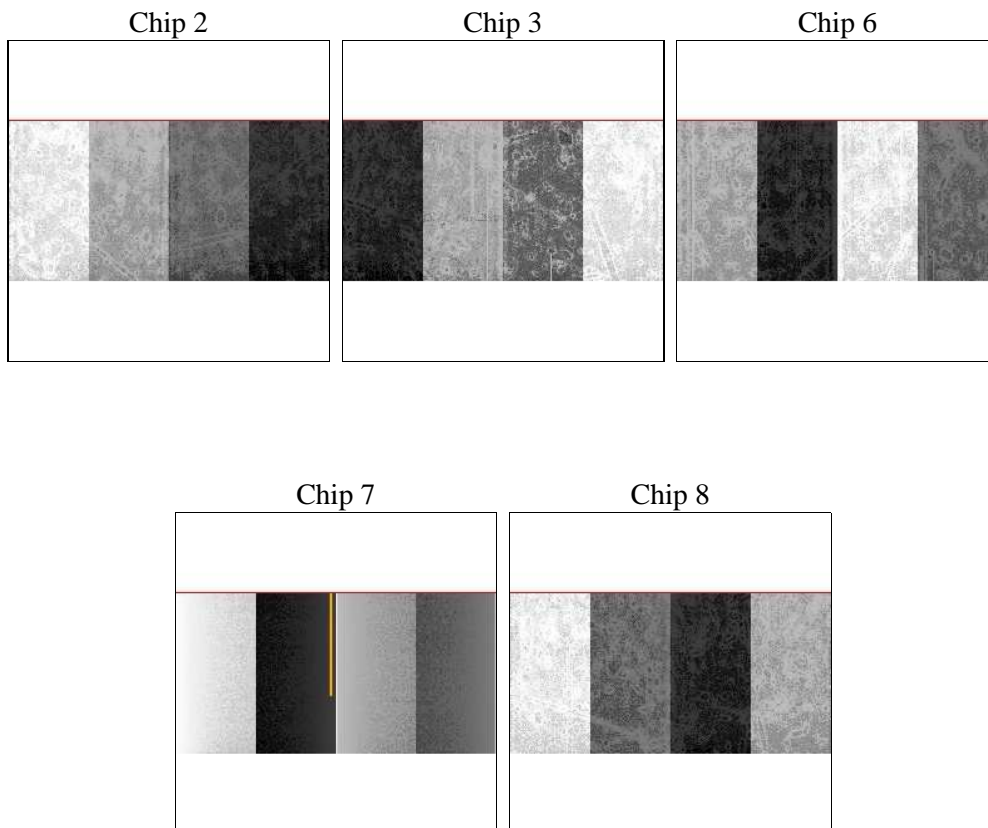
2 OBI

2.1 OBI

2.1.1 Images



2.1.2 Bias



2.1.3 Parameters

obi_num	0	Obi number	sched_exp_time	22000.000000	[s] Scheduled observation exposure time
ascdsver	8.4.5	Processing system revision	ontime	22062.59984535	Sum of GTIs [s]
caldbver	4.5.0	 	ontime2	22062.59984535	Sum of GTIs [s]
date	2012-07-04T16:03:01	Date and time of file creation	ontime3	22060.858855188	Sum of GTIs [s]
revision	2	Processing version of data	ontime6	22062.59984535	Sum of GTIs [s]
			ontime7	22062.59984535	Sum of GTIs [s]
			ontime8	22062.59984535	Sum of GTIs [s]
			l1events	481193	Number of level 1 events

2.1.4 Events

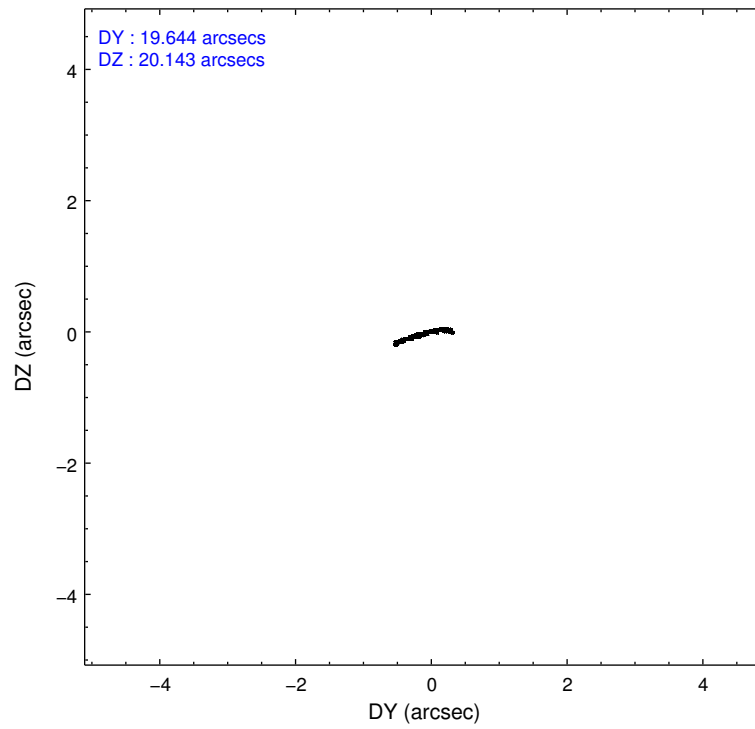
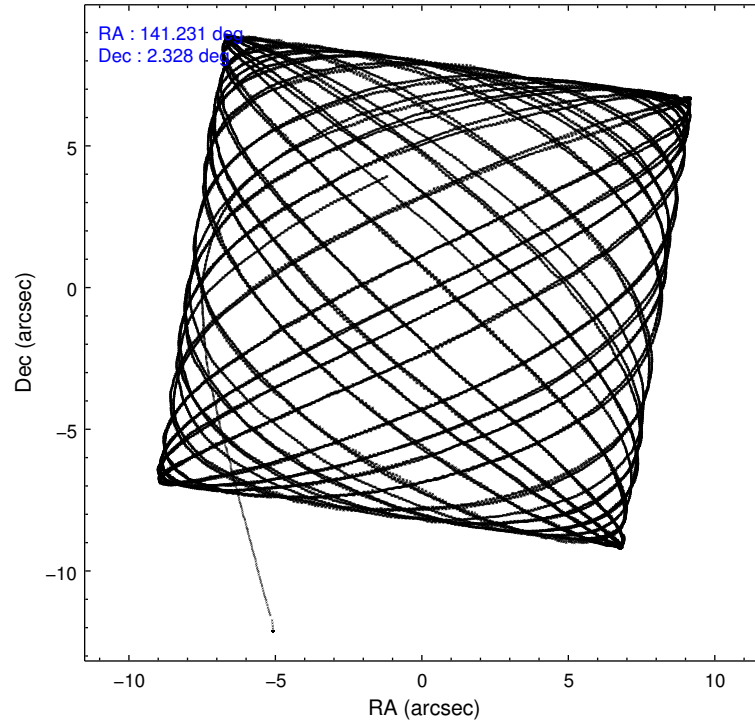
	ccd 2	ccd 3	ccd 6	ccd 7	ccd 8
level 1 events	86787	84516	90285	103584	116021
rejected events	77549	75349	79577	55916	87581
rejected %	89%	89%	88%	53%	75%

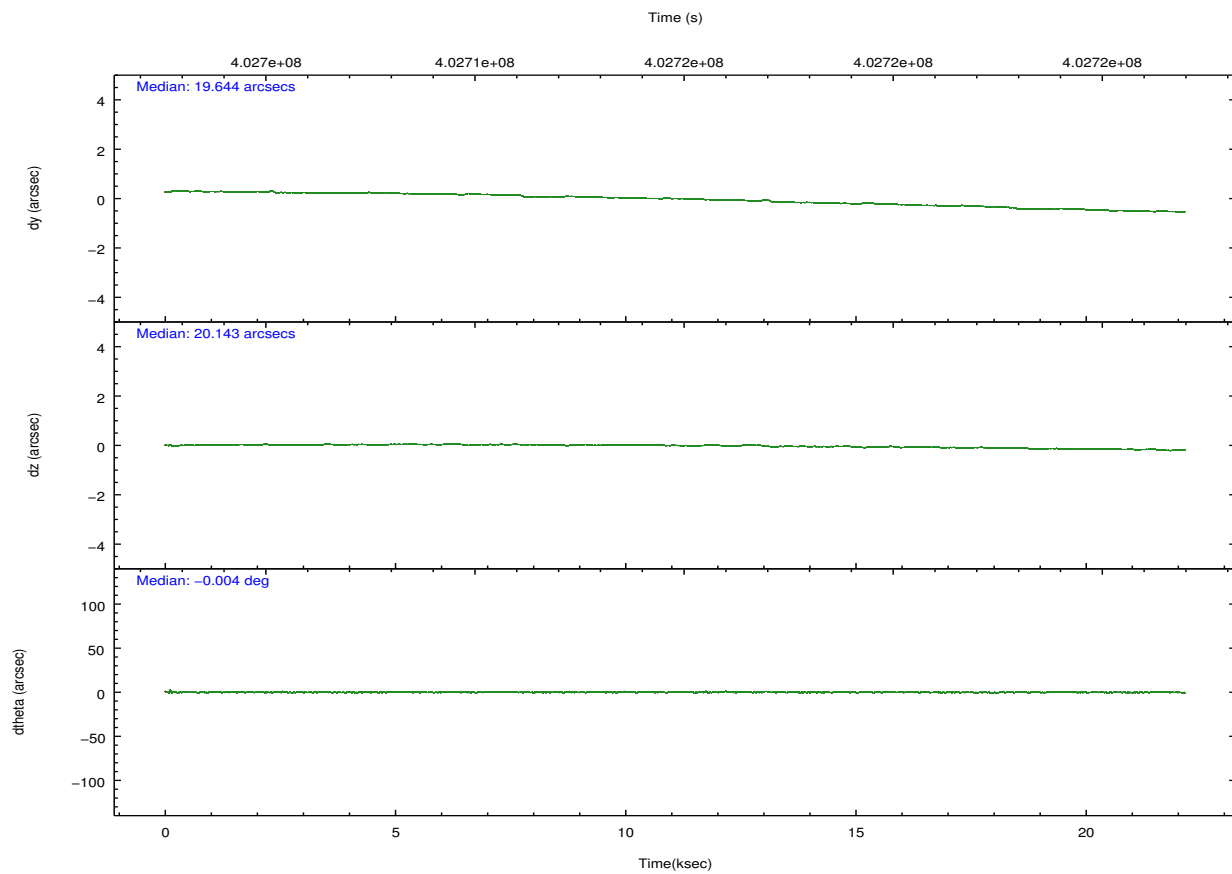
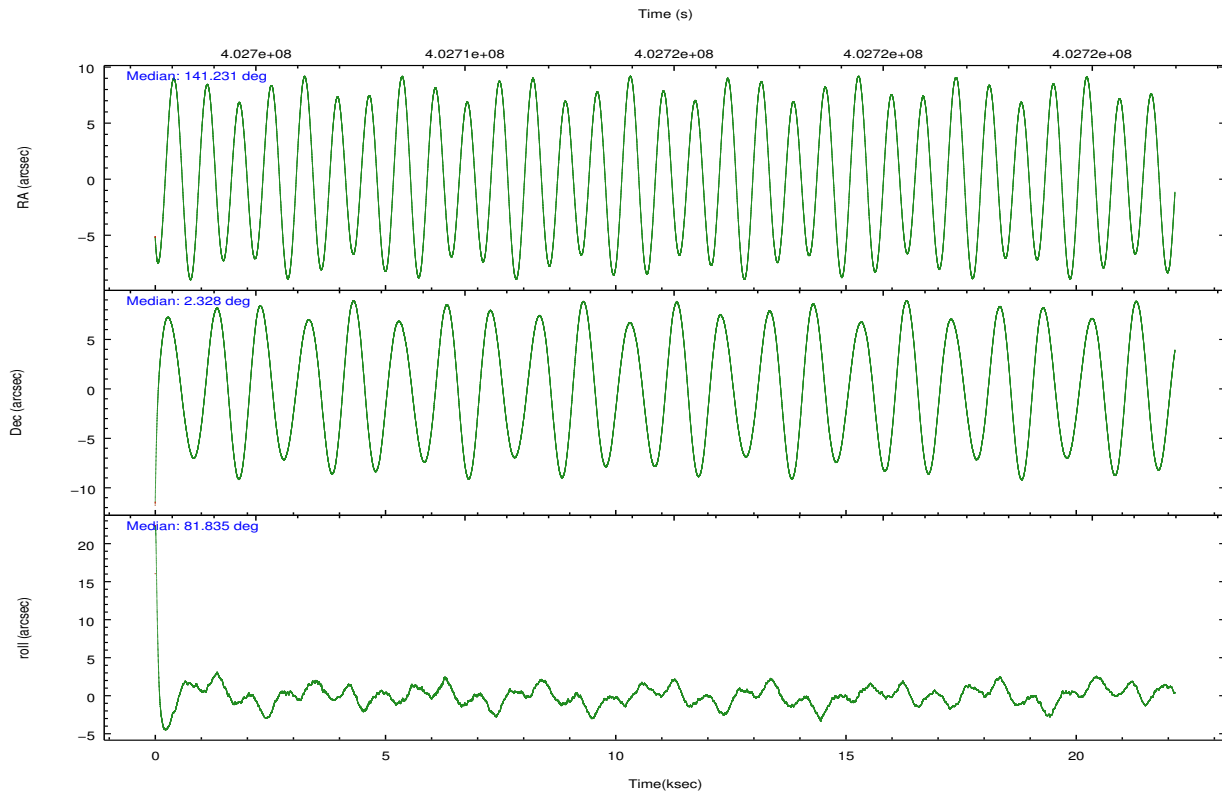
	ccd 2	ccd 3	ccd 6	ccd 7	ccd 8
grade 0 events	3080	3115	3787	4906	8631
	3%	3%	4%	4%	7%
grade 1 events	35	47	33	113	65
	0%	0%	0%	0%	0%
grade 2 events	2204	1941	2274	9786	6551
	2%	2%	2%	9%	5%
grade 3 events	1157	1198	1244	4759	2943
	1%	1%	1%	4%	2%
grade 4 events	1138	1206	1278	4753	2832
	1%	1%	1%	4%	2%
grade 5 events	2947	3751	3963	11048	5387
	3%	4%	4%	10%	4%
grade 6 events	1662	1710	2128	23465	7483
	1%	2%	2%	22%	6%
grade 7 events	74564	71548	75578	44754	82129
	85%	84%	83%	43%	70%

2.2 Compared Parameters

Parameter	Planned	Actual	Parameter	Planned	Actual
Instrument	ACIS	ACIS	Obspar format version number	7	7
Detector	ACIS-23678	ACIS-23678	Obspar file type	PREDICTED	ACTUAL
Grating	NONE	NONE	Obspar update status	NONE	UPDATED
Data mode	VFAINT	VFAINT	CCD I0 on	N	N
Observation mode	POINTING	POINTING	CCD I1 on	N	N
[deg] Pointing RA	141.241505	141.2309673042633	CCD I2 on	O4	Y
[deg] Pointing Dec	2.302789	2.328026906076858	CCD I3 on	O3	Y
[deg] Pointing Roll	81.682074	81.83913683530848	CCD S0 on	N	N
[mm] SIM focus pos	-0.684267	-0.6828225247311905	CCD S1 on	N	N
[mm] SIM defocus	0	0.001444936568705701	CCD S2 on	O1	Y
[mm] SIM translation stage pos	-190.132523	-190.145094680475	CCD S3 on	Y	Y
[mm] SIM translation stage offset	0	0.01257209746719923	CCD S4 on	O2	Y
[s] Observation start time (MET)	402703856.184000	402702827.87241	CCD S5 on	N	N
Observation start date	2010-10-05T22:09:50	2010-10-05T21:53:47	Number of optional ACIS chips dropped	0	0
[s] Observation end time (MET)	402725856.184000	402726595.57363	On-chip summing requested	N	N
Observation end date	2010-10-06T04:16:30	2010-10-06T04:29:55	Subarray requested	CUSTOM	1/2
Read mode	TIMED	TIMED	Subarray start row	257	257
			Subarray row count	512	512
			Alternating exposures requested	N	N
			[s] Primary exposure time	0.000000	1.7

2.3 Aspect



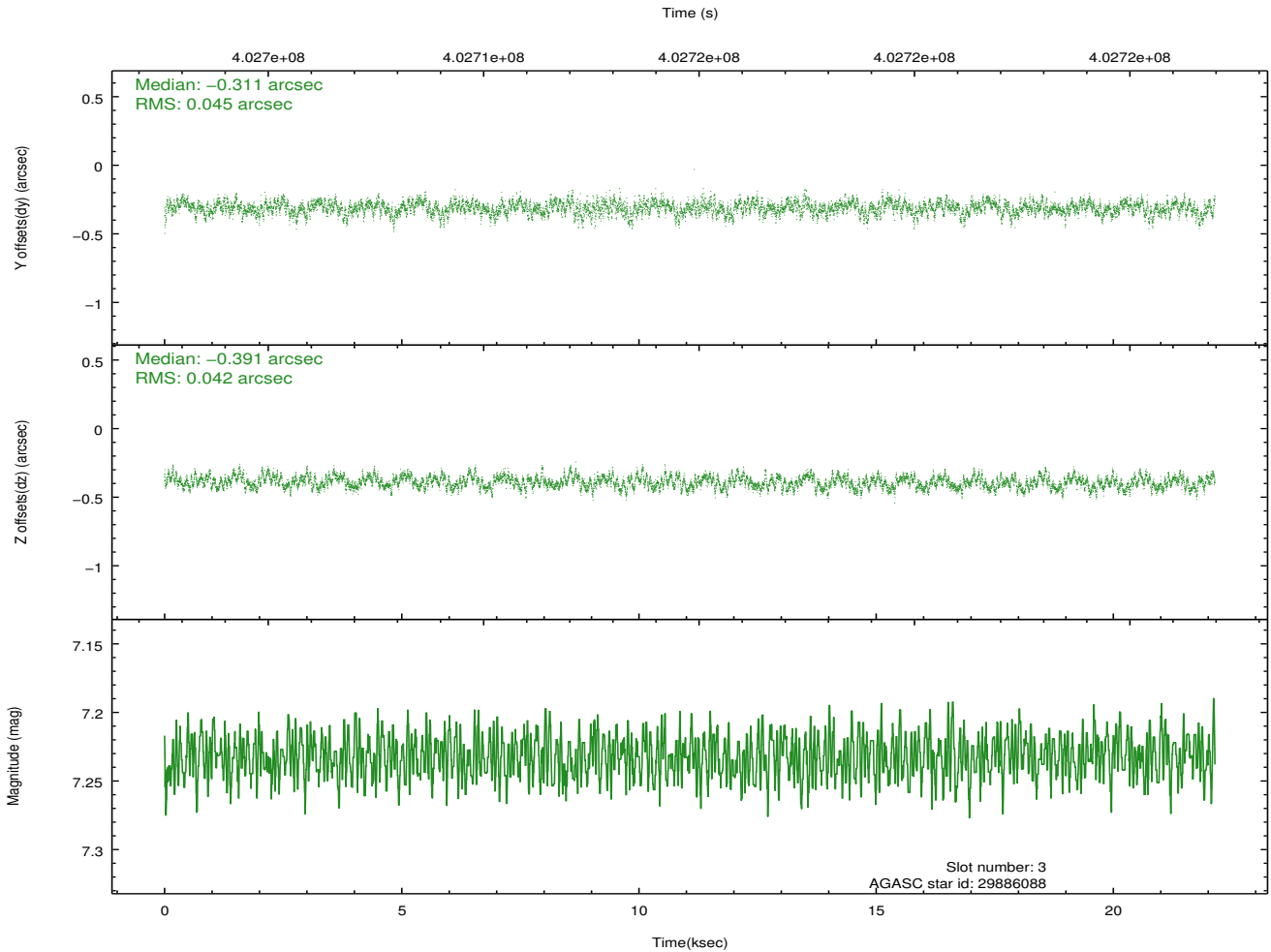
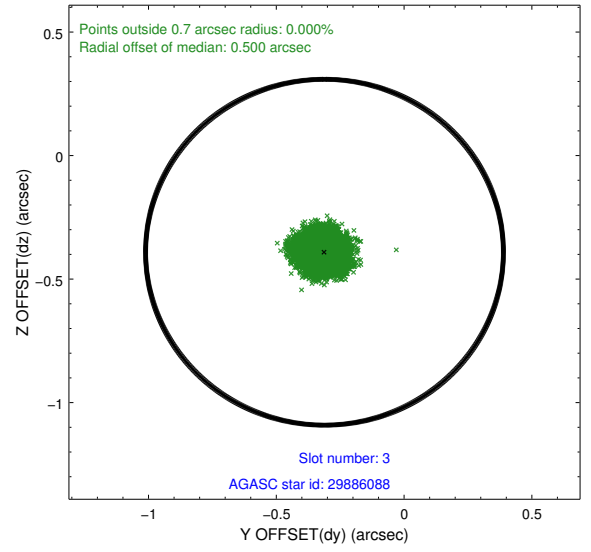
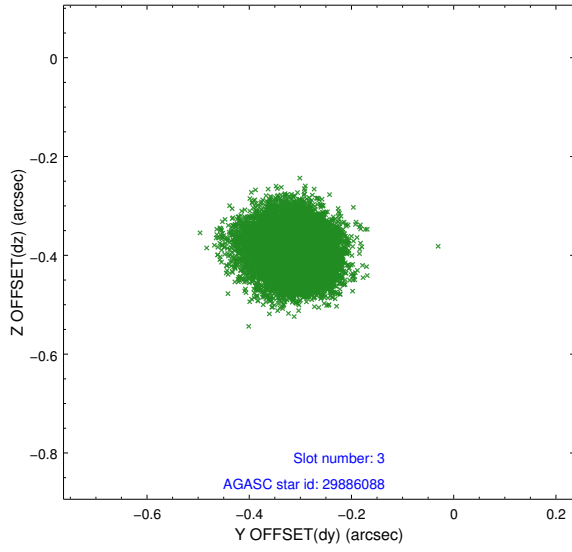


Slot Statistics

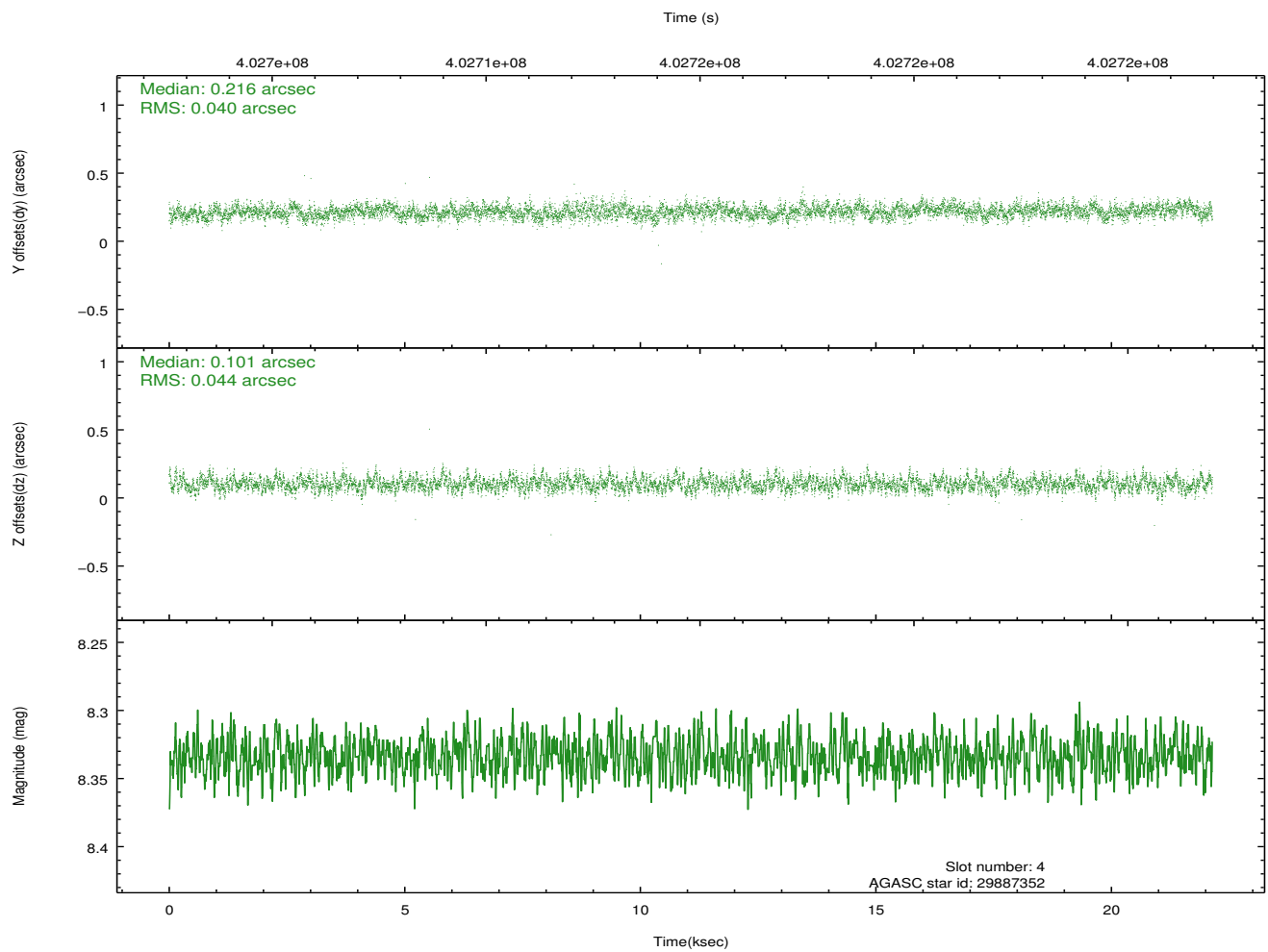
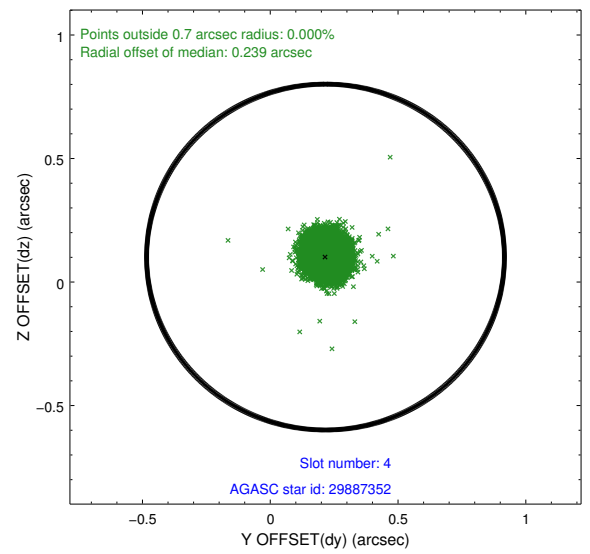
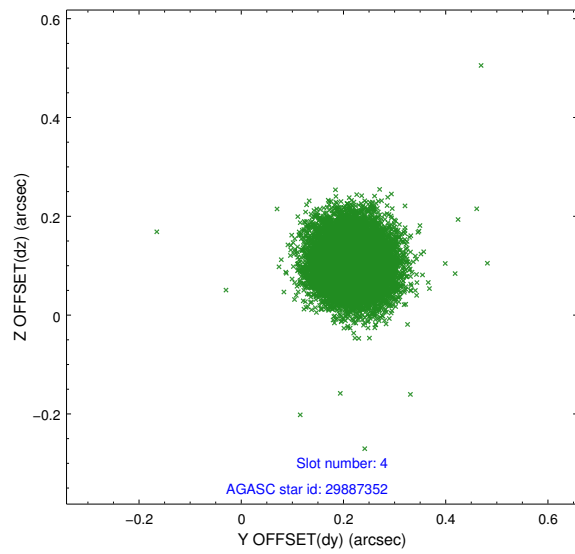
slot	status	id	mag	n_pts	med_dy	med_dz	dr1	dr2	ra	dec	mean_y	mean_z
0	FID	ACIS-S-2	6.89	5402	-0.103	-0.017	0.006	0.011	0.000000	0.000000	-772.80	-1741.54
1	FID	ACIS-S-4	6.96	5402	0.212	0.054	0.007	0.013	0.000000	0.000000	2140.73	166.84
2	FID	ACIS-S-5	6.99	5402	-0.140	-0.028	0.008	0.015	0.000000	0.000000	-1825.47	160.62
3	GUIDE	29886088	7.23	10802	-0.311	-0.391	0.066	0.104	140.911389	2.409953	210.02	1230.33
4	GUIDE	29887352	8.33	10798	0.216	0.101	0.064	0.103	141.532384	1.680922	-2063.08	-1359.40
5	GUIDE	29887672	8.91	10796	0.146	0.269	0.094	0.154	141.769553	1.649125	-2052.95	-2220.42
6	GUIDE	30286048	8.07	10799	-0.070	-0.020	0.093	0.162	141.985448	2.834840	2281.38	-2370.50
7	GUIDE	30292744	8.54	10798	0.022	0.038	0.078	0.125	141.614493	2.506173	919.20	-1220.94

2.4 Star Slots

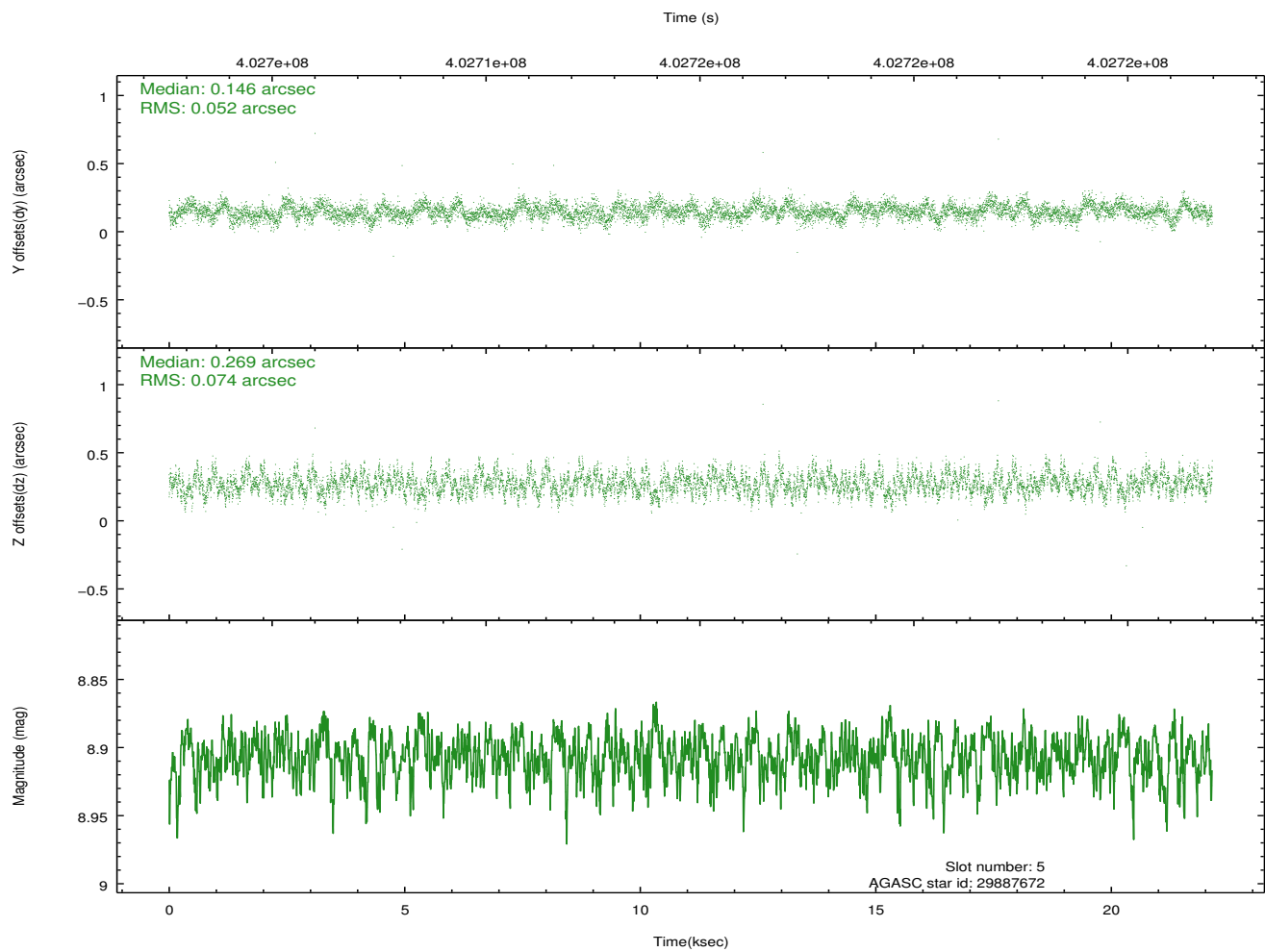
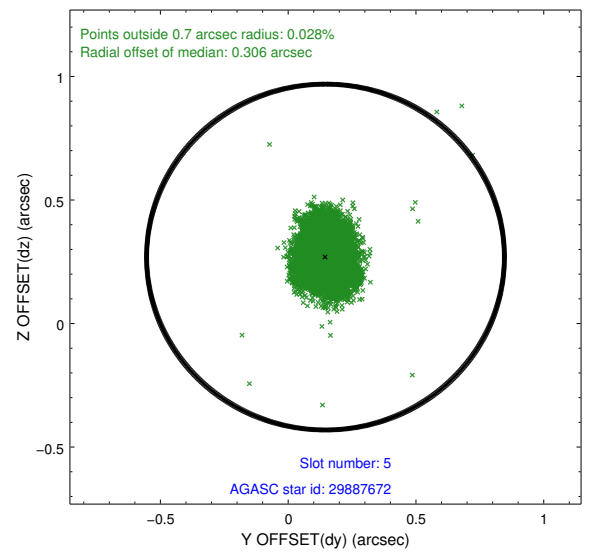
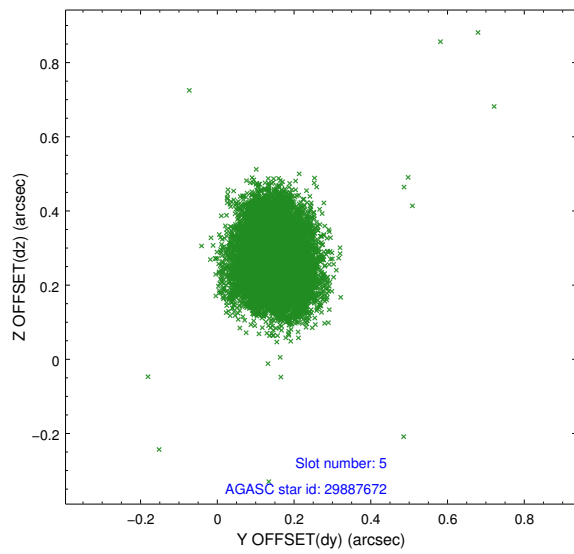
2.4.1 Slot 3



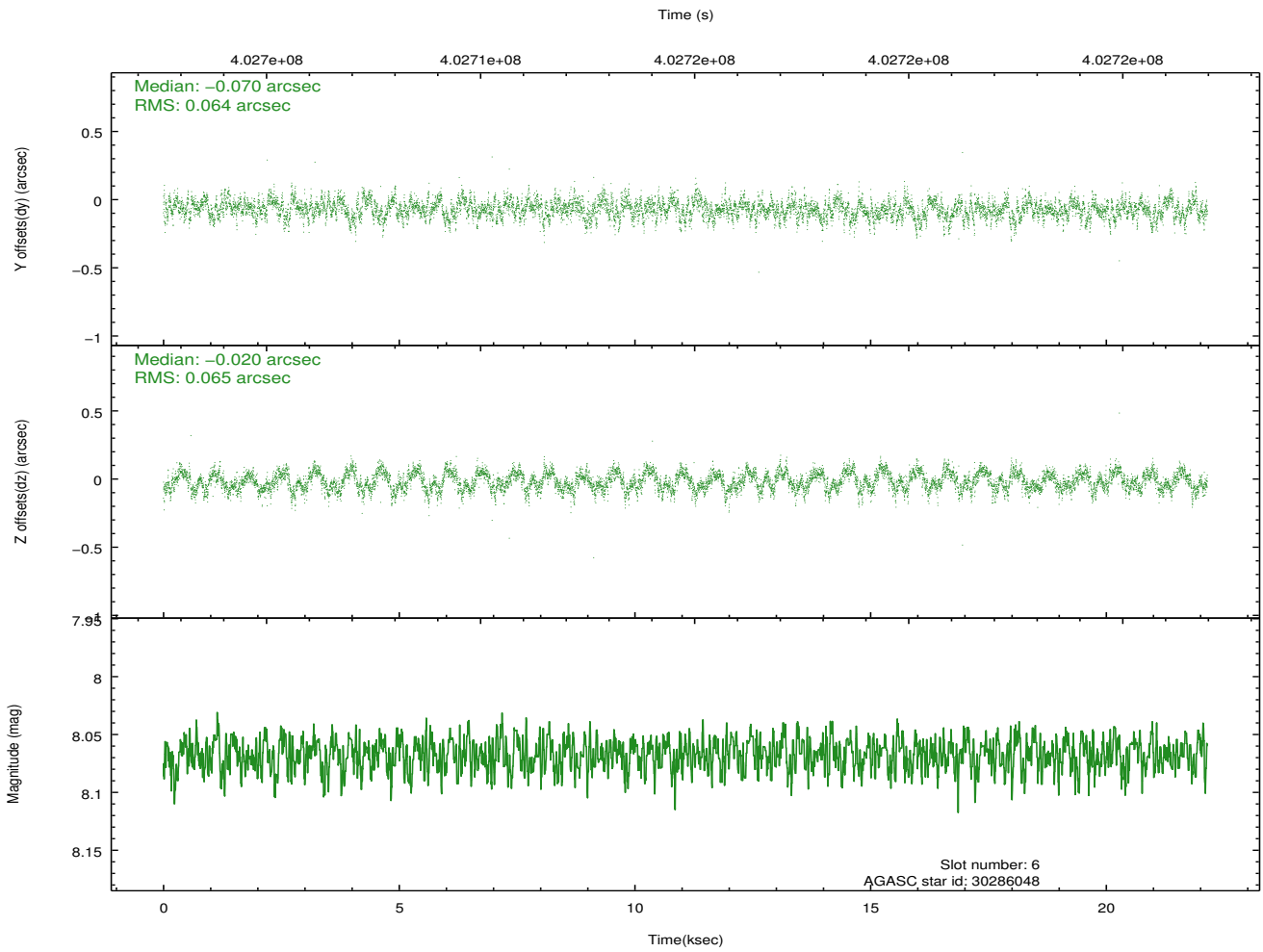
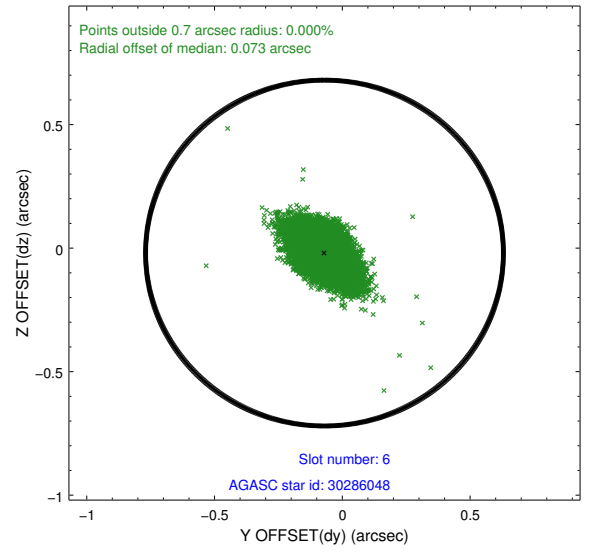
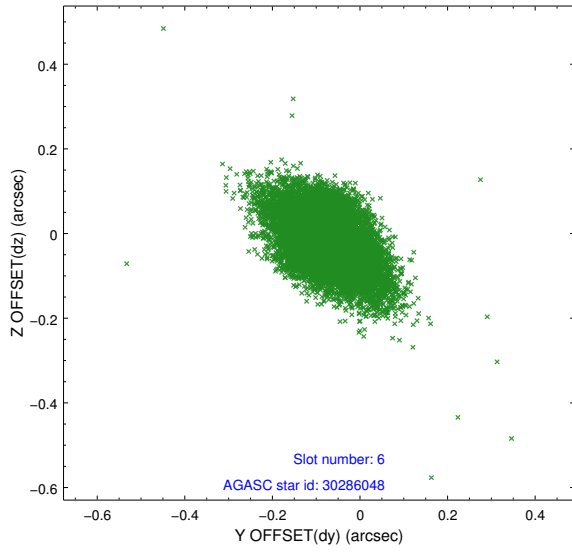
2.4.2 Slot 4



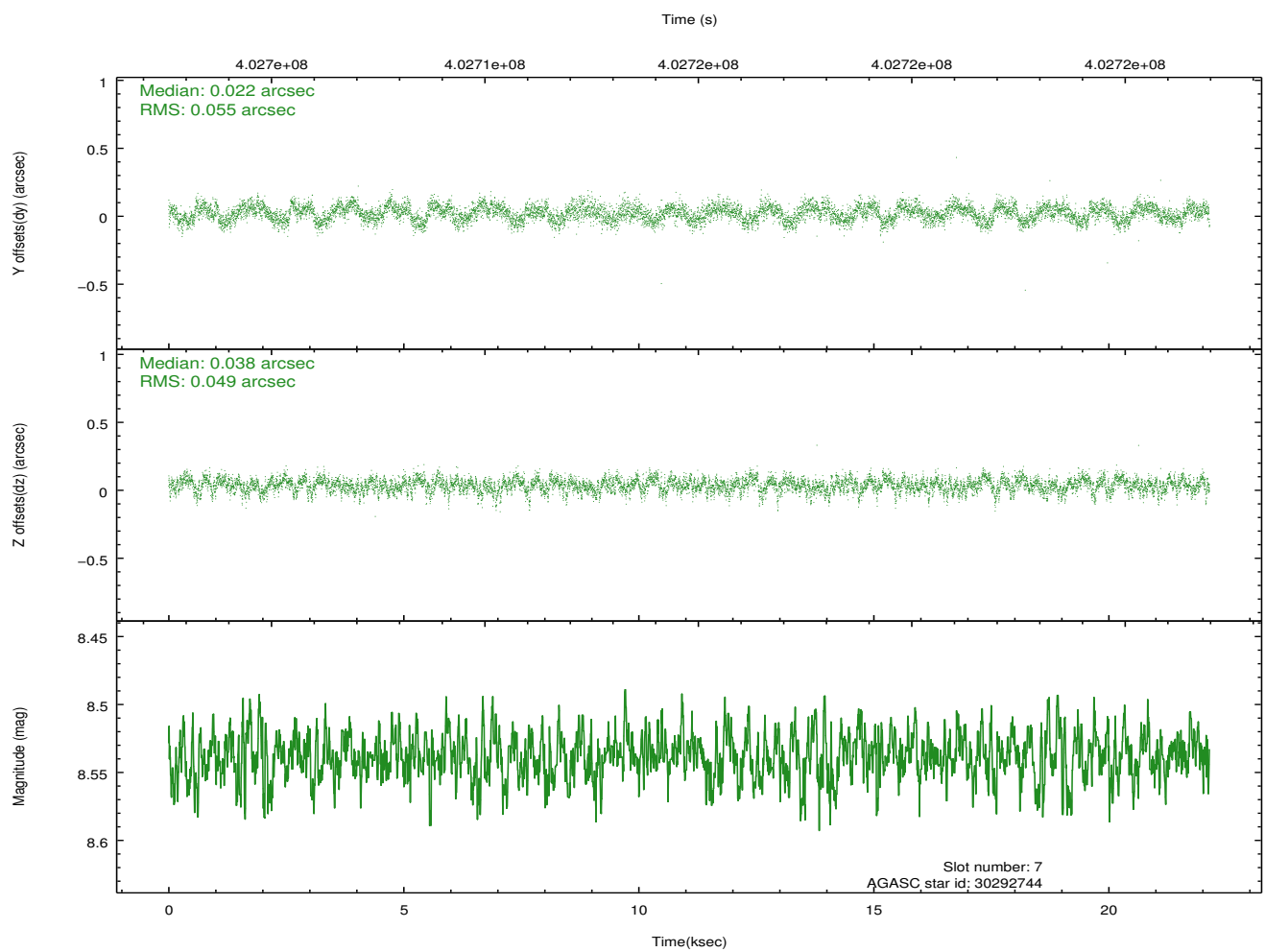
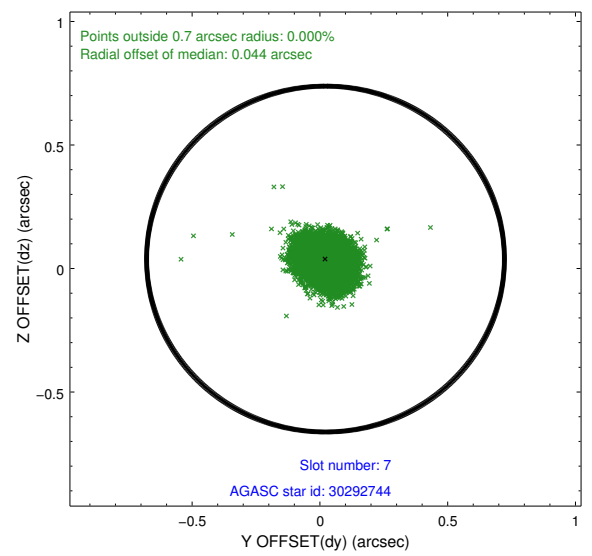
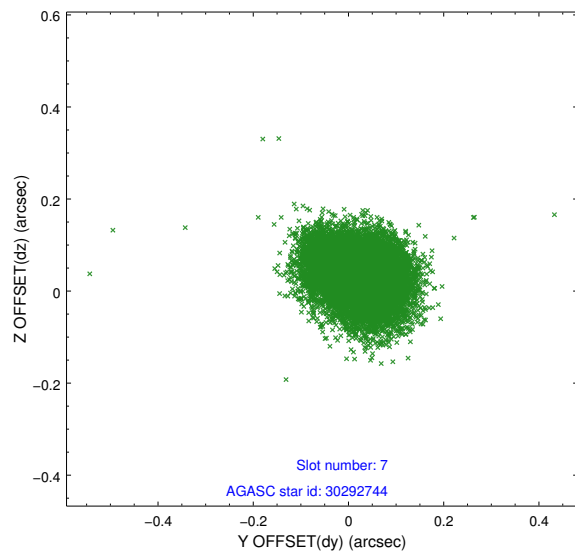
2.4.3 Slot 5



2.4.4 Slot 6

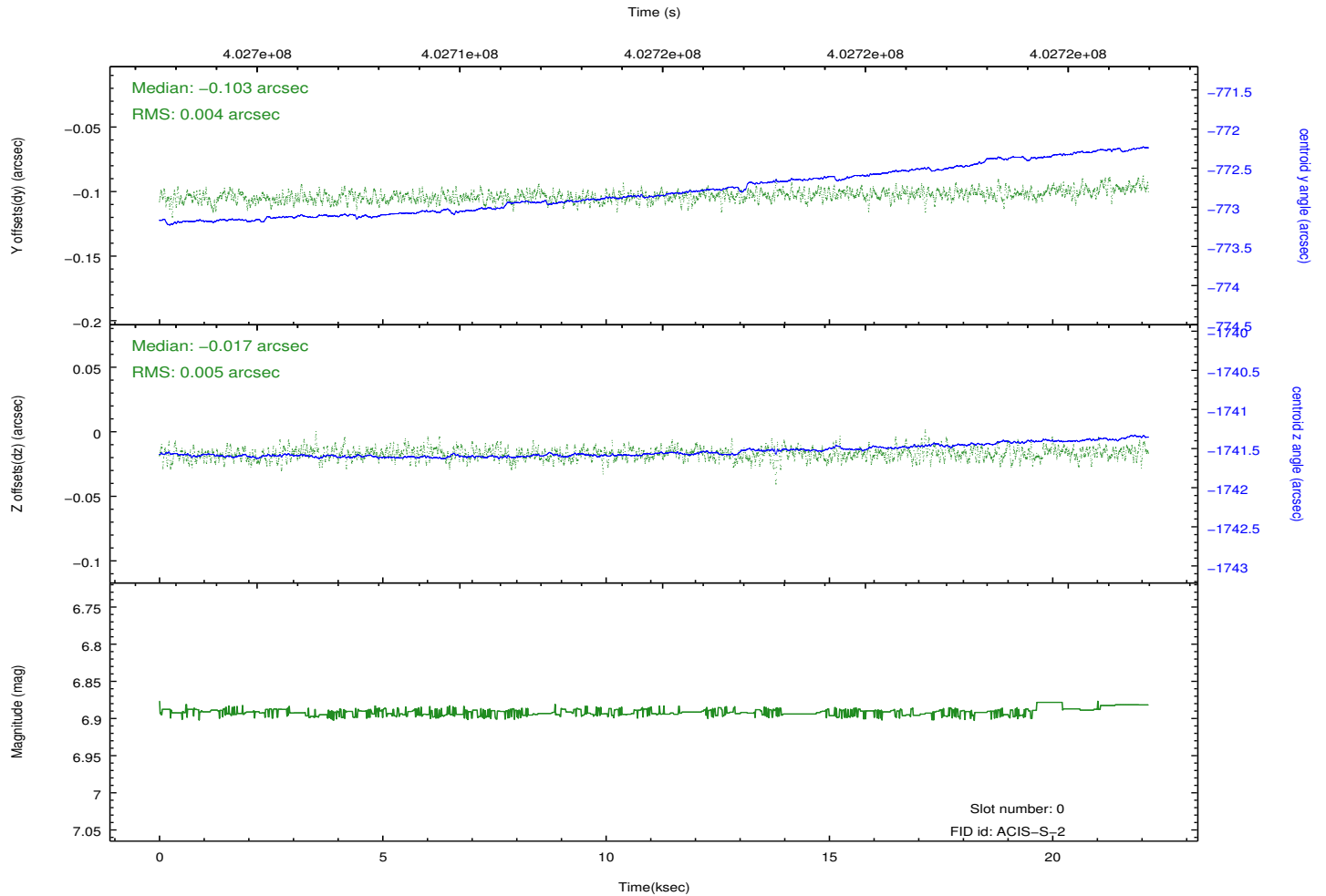
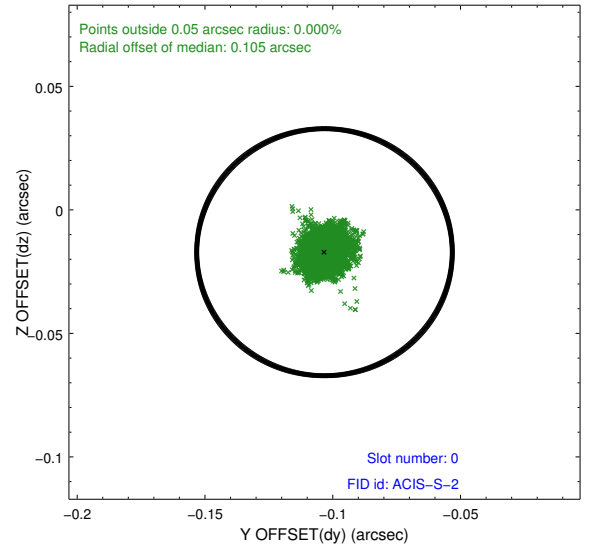
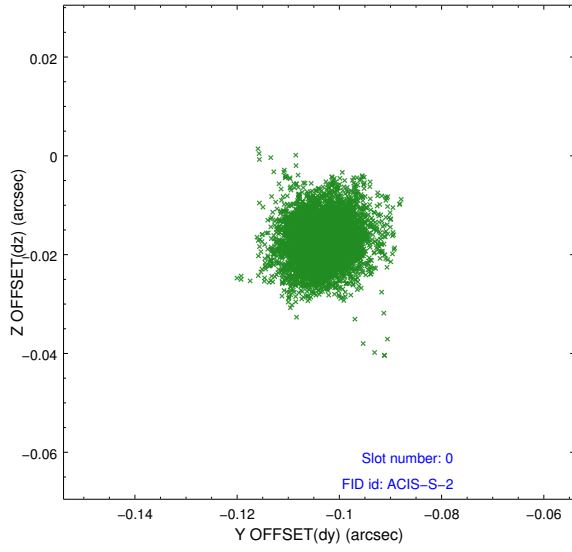


2.4.5 Slot 7

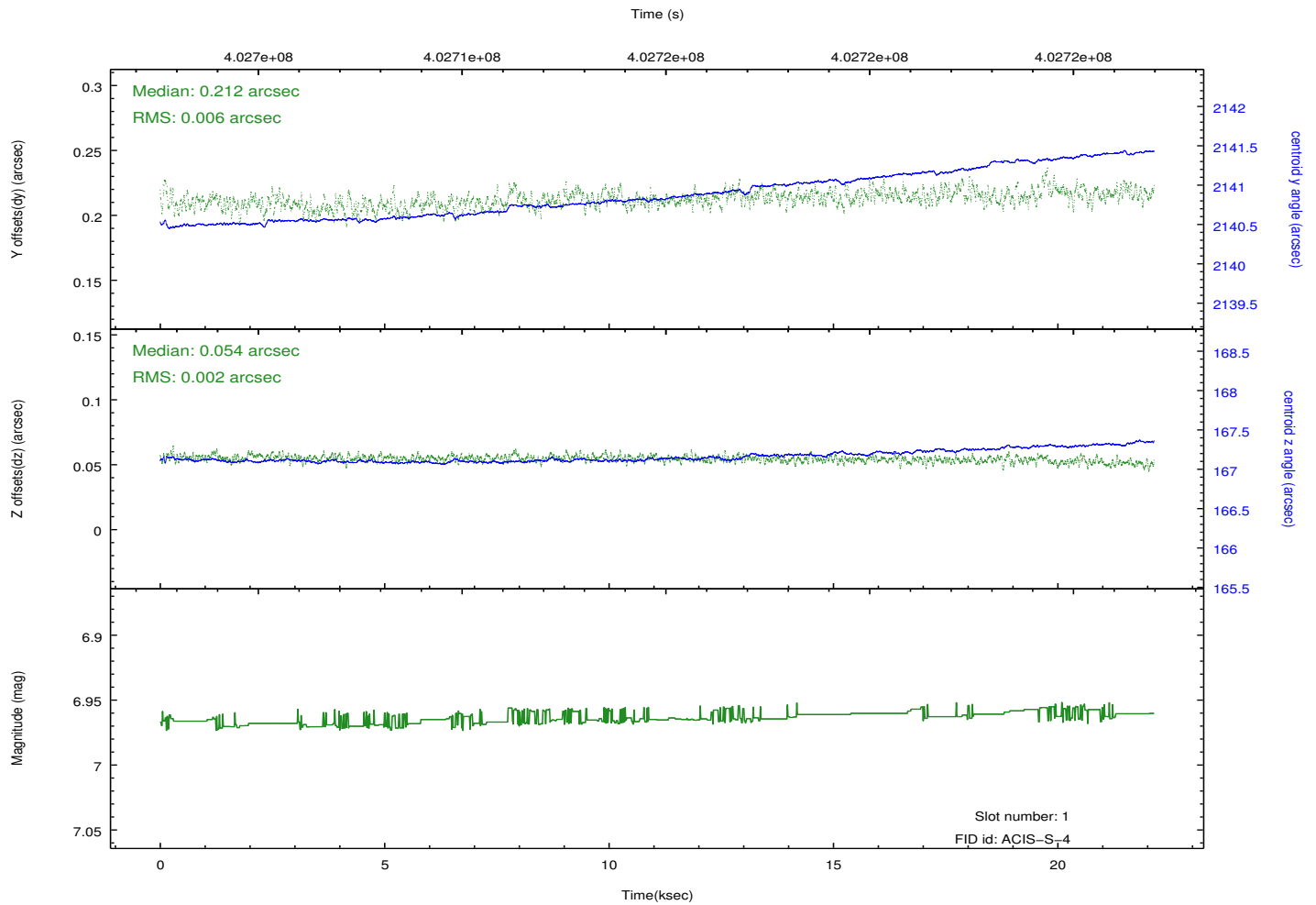
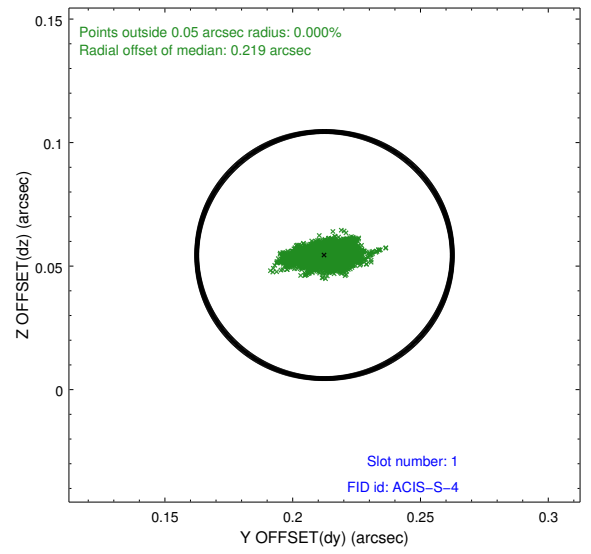
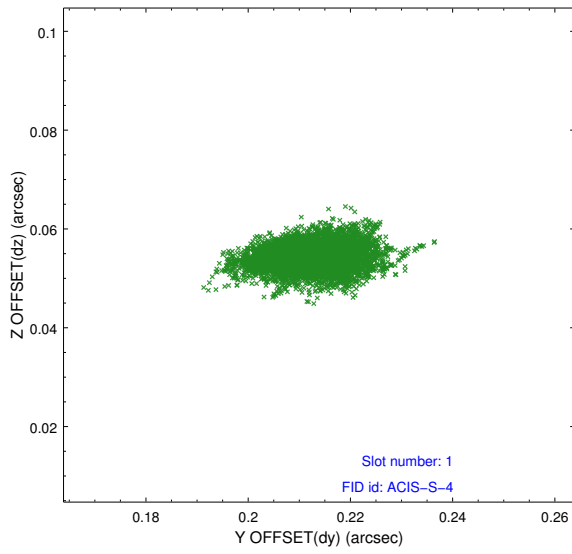


2.5 FID Slots

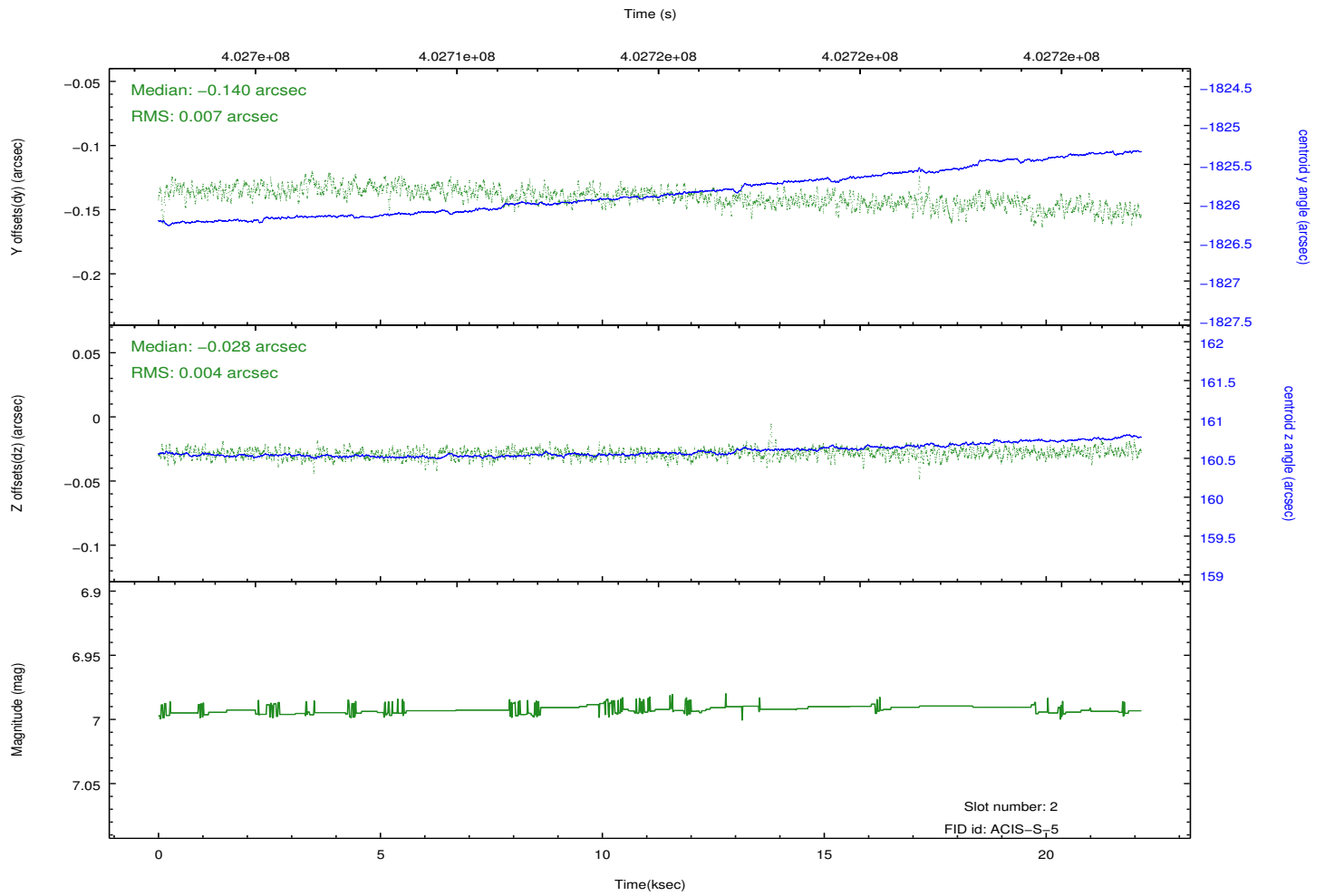
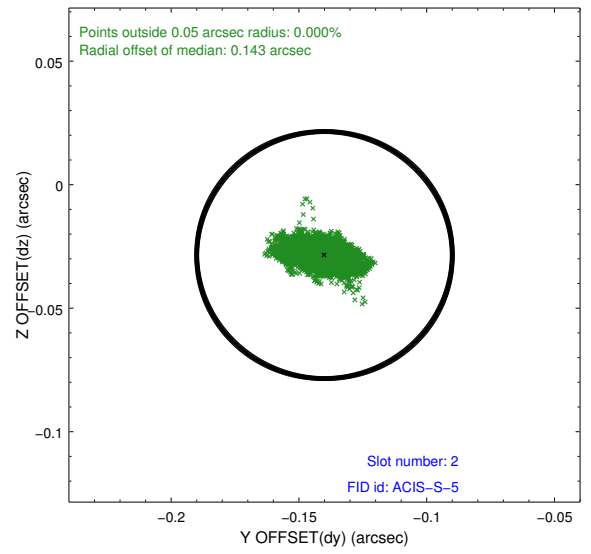
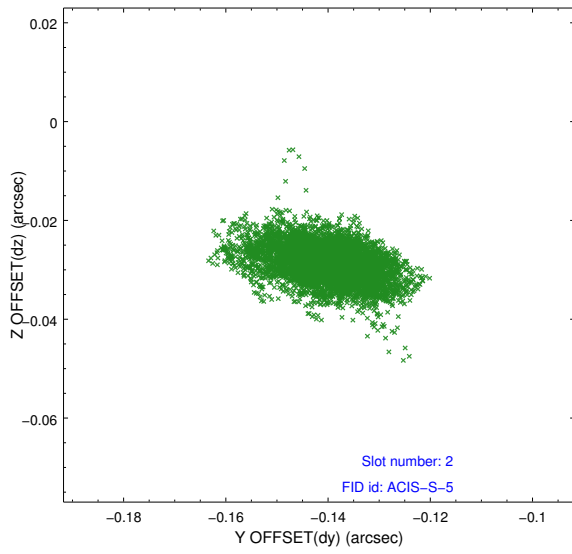
2.5.1 Slot 0



2.5.2 Slot 1



2.5.3 Slot 2



A Summary

A.1 Status

V&V Scientist	Jen Lauer
V&V Date (YYYY-MM-DD)	2012.07.12
V&V Edition	1
V&V Disposition and Status	OK
V&V Charge Time	22.06259984535

A.2 Comments