

V&V Reference Report

L2 ASCDS Version : 8.4.5

Observation 116 - L2 Version 4
Chandra X-Ray Center

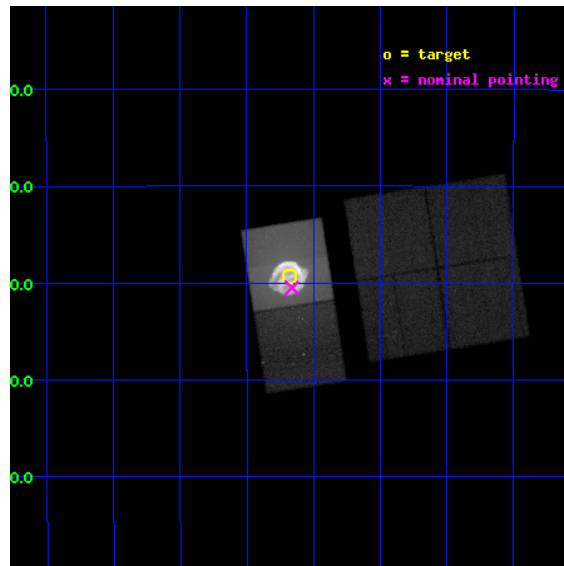
L2 Processing Date : Aug 30 2012

Contents

1	Front	2
2	OBI	3
2.1	OBI	3
2.1.1	Images	3
2.1.2	Bias	3
2.1.3	Parameters	4
2.1.4	Events	4
2.2	Compared Parameters	5
2.3	Aspect	6
2.4	Star Slots	9
2.4.1	Slot 3	9
2.4.2	Slot 4	10
2.4.3	Slot 5	11
2.4.4	Slot 6	12
2.4.5	Slot 7	13
2.5	FID Slots	14
2.5.1	Slot 0	14
2.5.2	Slot 1	15
2.5.3	Slot 2	16
A	Summary	17
A.1	Status	17
A.2	Comments	17

1 Front

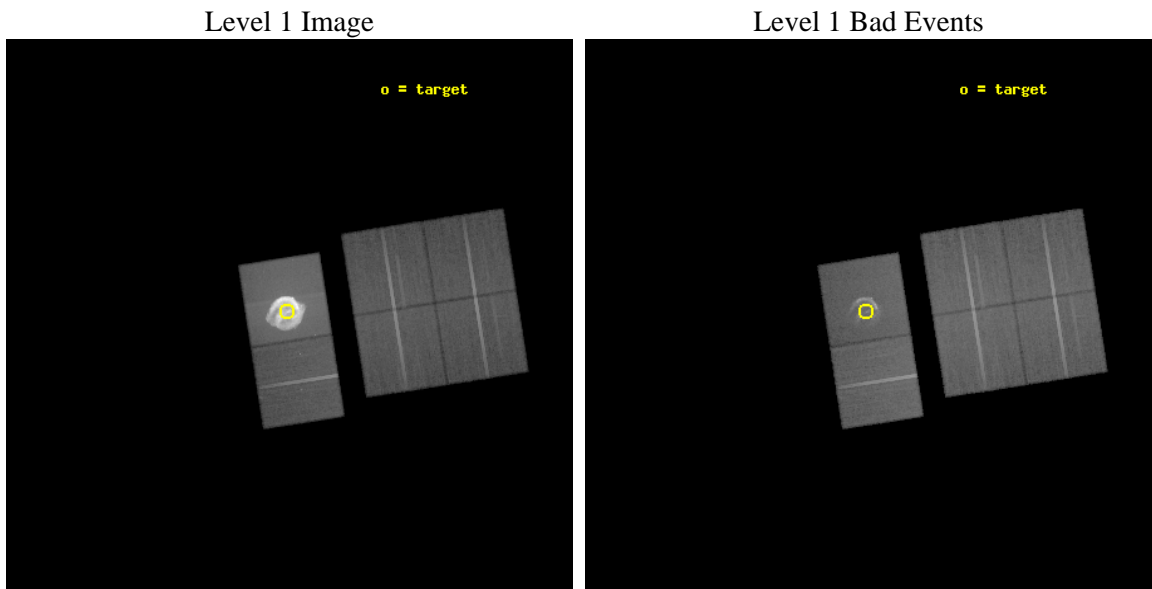
seq_num	500003	Sequence number
obs_id	116	Observation id
title	ACIS OBSERVATIONS OF TYCHO AND KEPLER	Proposal title
observer	DR STEPHEN HOLT	Principal investigator
object	KEPLER SNR	Source name
dtycycle	0	
cycle	P	events from which exps? Prim/Second/Both
ra_targ	262.67083	Observer's specified target RA [deg]
dec_targ	-21.48806	Observer's specified target Dec [deg]
ra_nom	262.66538182345	Nominal RA [deg]
dec_nom	-21.508488051454	Nominal Dec [deg]
roll_nom	261.12426446101	Nominal Roll [deg]
revision	4	Processing version of data
ontime	49449.559075803	Sum of GTIs [s]
livetime	48823.398983835	Livetime [s]
ontime0	49449.559045896	Sum of GTIs [s]
ontime1	49452.800046042	Sum of GTIs [s]
ontime2	49452.800046042	Sum of GTIs [s]
ontime3	49452.800046042	Sum of GTIs [s]
ontime6	49452.800046042	Sum of GTIs [s]
ontime7	49449.559075803	Sum of GTIs [s]
l2events	2913962	Number of level 2 events



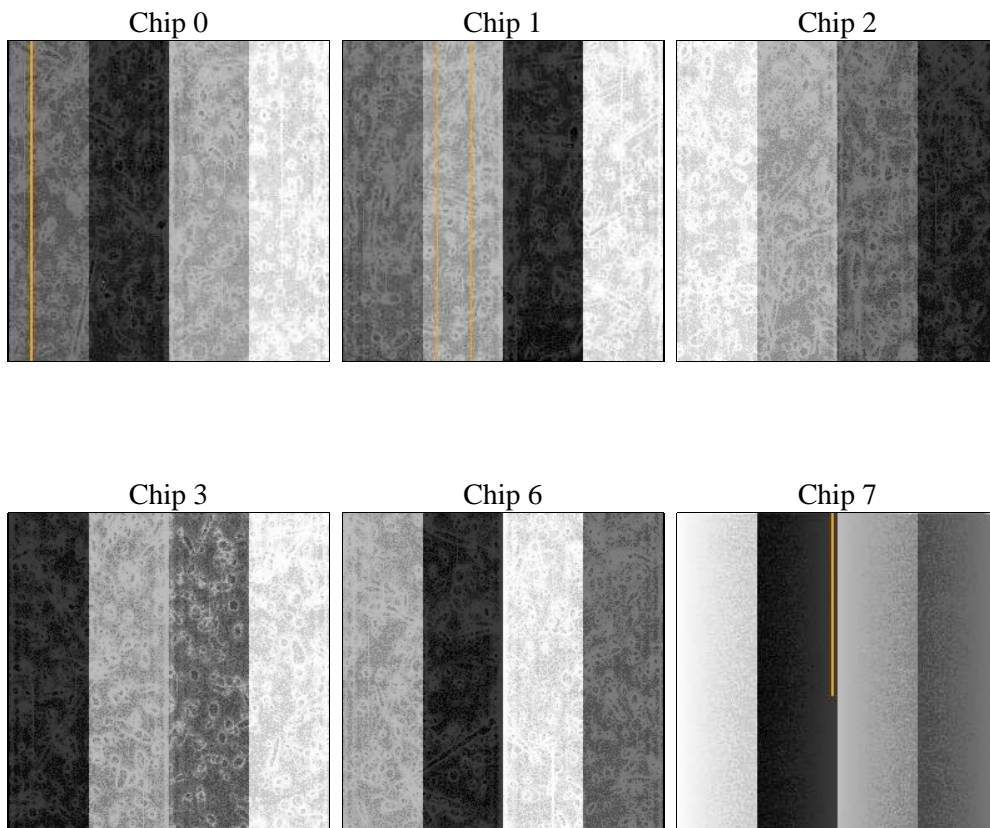
2 OBI

2.1 OBI

2.1.1 Images



2.1.2 Bias



2.1.3 Parameters

obi_num	0	Obi number	sched_exp_time	49500.000000	[s] Scheduled observation exposure time
ascdsver	8.4.5	Processing system revision	ontime	49449.559075803	Sum of GTIs [s]
caldbver	4.5.1.1	 	ontime0	49449.559045896	Sum of GTIs [s]
date	2012-08-30T03:56:46	Date and time of file creation	ontime1	49452.800046042	Sum of GTIs [s]
revision	4	Processing version of data	ontime2	49452.800046042	Sum of GTIs [s]
			ontime3	49452.800046042	Sum of GTIs [s]
			ontime6	49452.800046042	Sum of GTIs [s]
			ontime7	49449.559075803	Sum of GTIs [s]
			l1events	4706373	Number of level 1 events

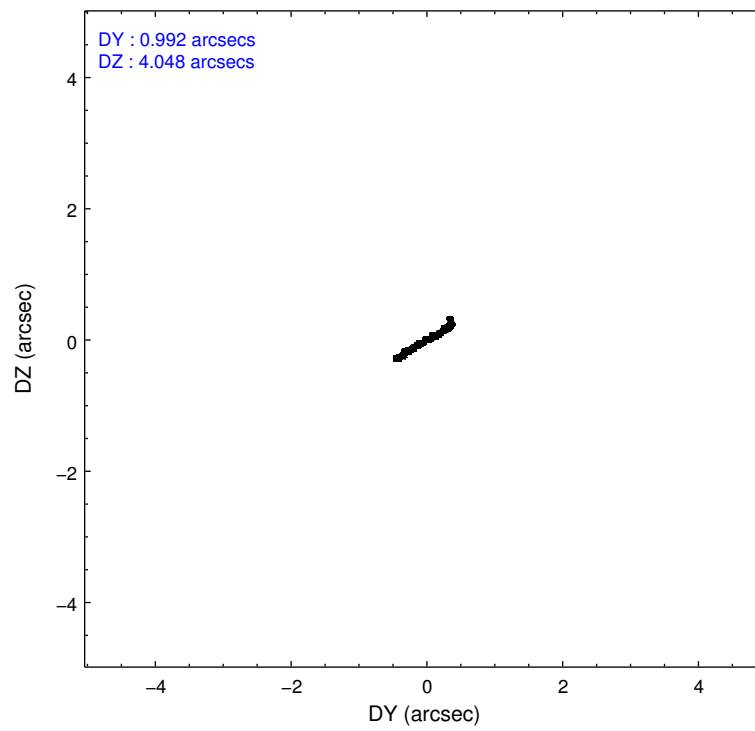
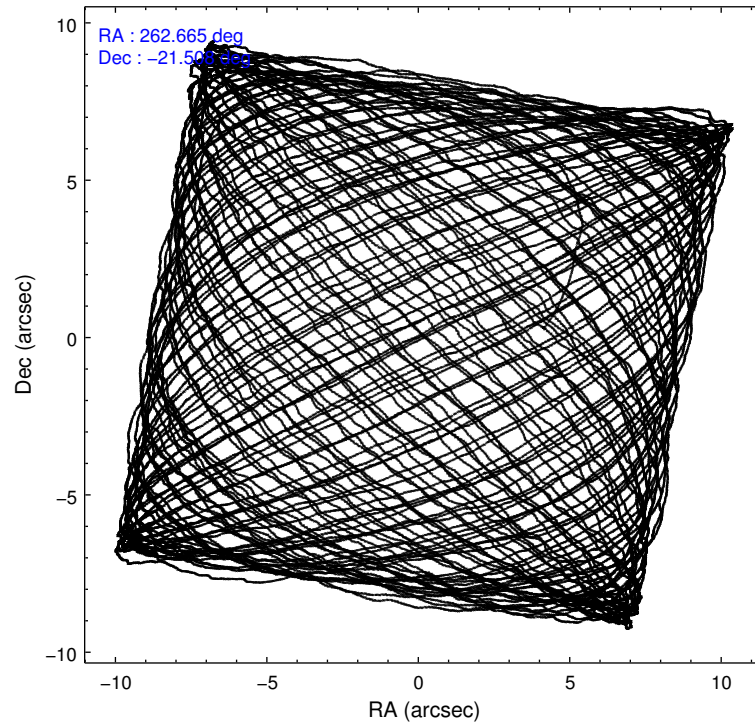
2.1.4 Events

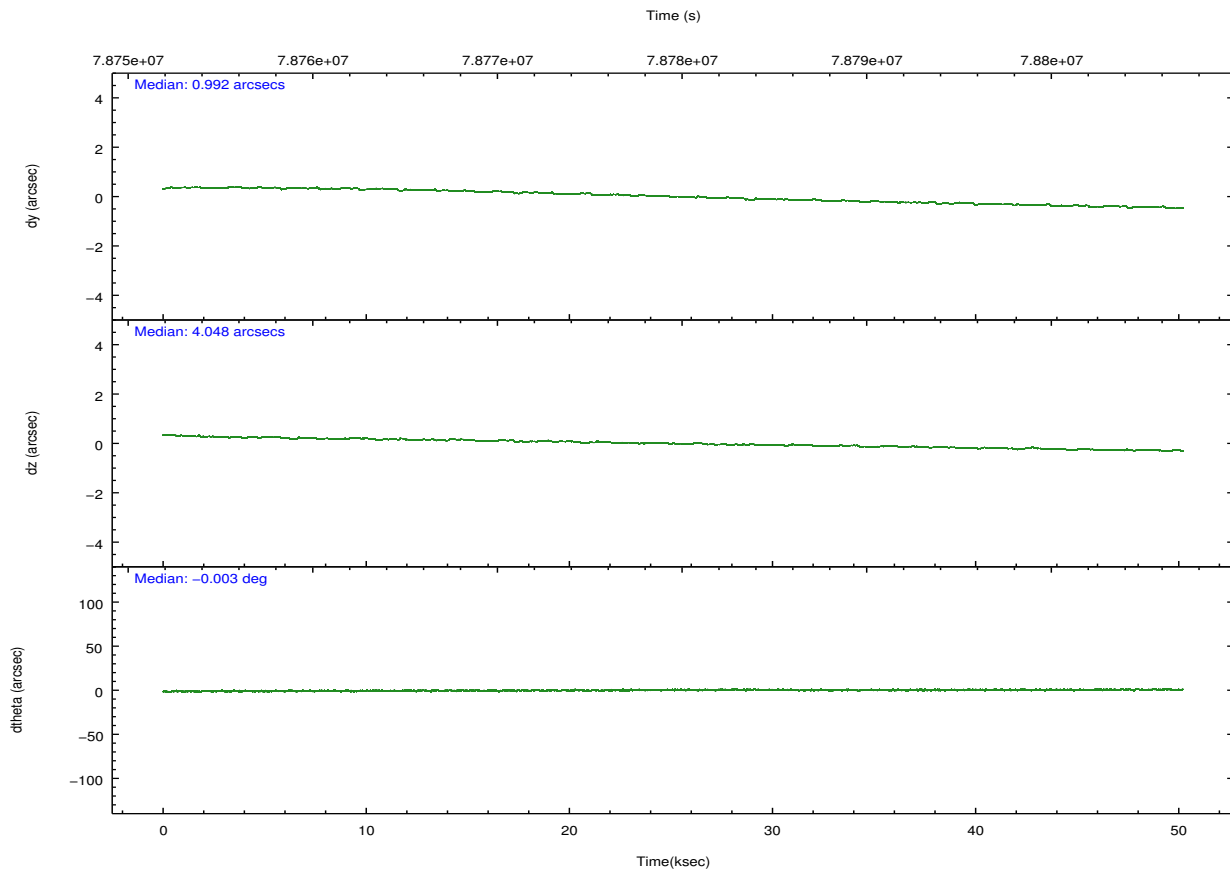
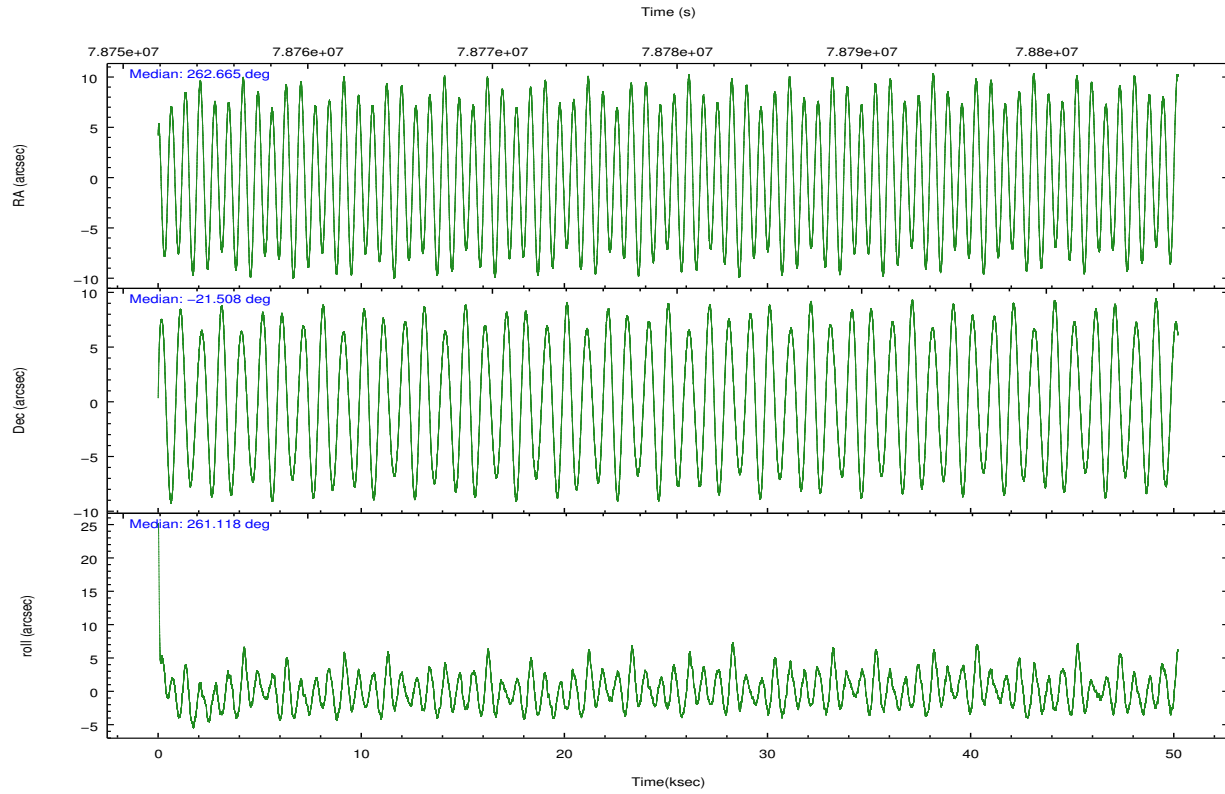
	ccd 0	ccd 1	ccd 2	ccd 3	ccd 6	ccd 7		ccd 0	ccd 1	ccd 2	ccd 3	ccd 6	ccd 7
level 1 events	318113	305304	341552	341092	362399	3037913	grade 0 events	18270	17917	20484	22685	38748	850662
rejected events	278211	264700	300191	297413	298885	267440		5%	5%	5%	6%	10%	28%
rejected %	87%	86%	87%	87%	82%	8%	grade 1 events	172	162	163	169	223	7004
								0%	0%	0%	0%	0%	0%
							grade 2 events	7944	7766	7957	7582	9186	736136
								2%	2%	2%	2%	2%	24%
							grade 3 events	3807	4021	3530	3642	4144	327742
								1%	1%	1%	1%	1%	10%
							grade 4 events	3494	3973	3451	3610	4236	324553
								1%	1%	1%	1%	1%	10%
							grade 5 events	11132	11333	10370	11421	12763	62727
								3%	3%	3%	3%	3%	2%
							grade 6 events	6391	6932	5941	6163	7206	531626
								2%	2%	1%	1%	1%	17%
							grade 7 events	266903	253200	289656	285820	285893	197463
								83%	82%	84%	83%	78%	6%

2.2 Compared Parameters

Parameter	Planned	Actual	Parameter	Planned	Actual
Instrument	ACIS	ACIS	Obspar format version number	7	7
Detector	ACIS-012367	ACIS-012367	Obspar file type	PREDICTED	ACTUAL
Grating	NONE	NONE	Obspar update status	NONE	UPDATED
Data mode	FAINT	FAINT	Number of optional ACIS chips dropped	0	0
Observation mode	POINTING	POINTING	On-chip summing requested	N	N
[deg] Pointing RA	262.654653	262.6653818234469	Subarray requested	NONE	NONE
[deg] Pointing Dec	-21.482967	-21.50848805145441	Alternating exposures requested	N	N
[deg] Pointing Roll	260.963702	261.1242644610083	[s] Primary exposure time	0.000000	3.2
[mm] SIM focus pos	-0.684267	-0.6828225247311905			
[mm] SIM defocus	0	0.001444936568705701			
[mm] SIM translation stage pos	-190.132523	-190.1425803651734			
[mm] SIM translation stage offset	0	0.01005778216563158			
[s] Observation start time (MET)	78755112.184000	78753896.350668			
Observation start date	2000-06-30T12:24:08	2000-06-30T12:04:56			
[s] Observation end time (MET)	78804612.184000	78805186.32755899			
Observation end date	2000-07-01T02:09:08	2000-07-01T02:19:46			
Read mode	TIMED	TIMED			

2.3 Aspect





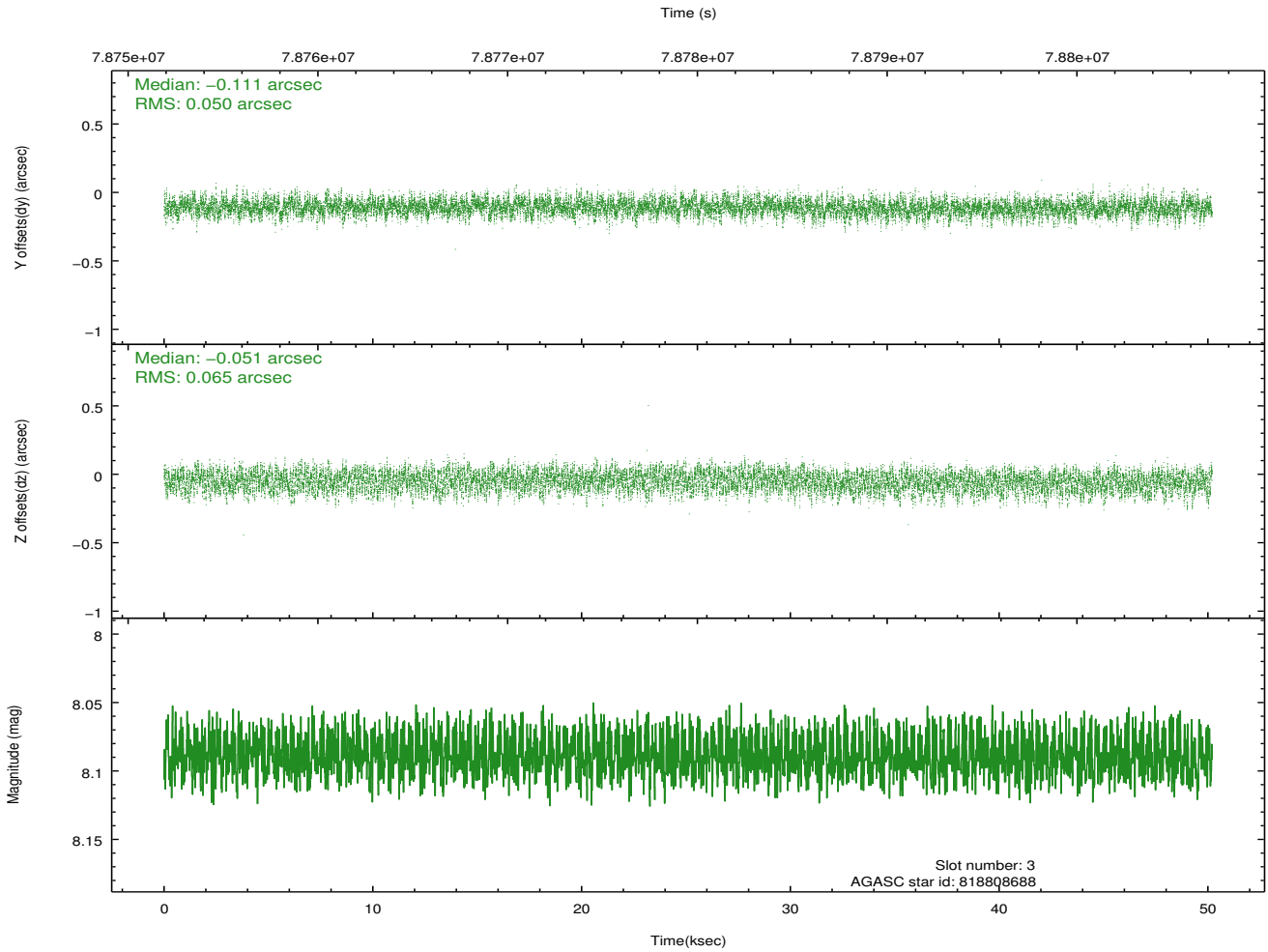
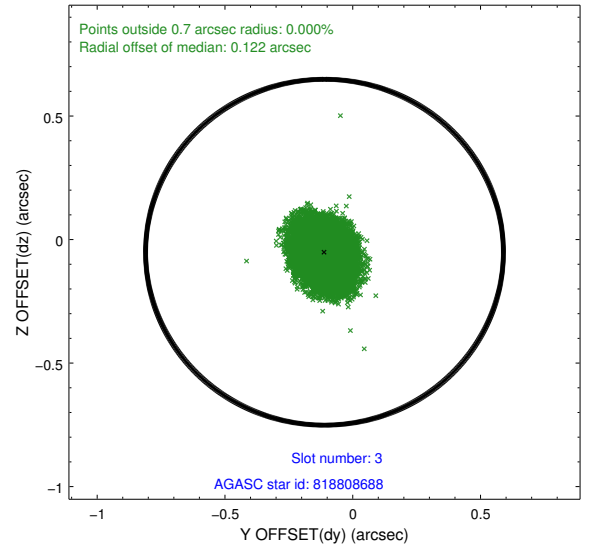
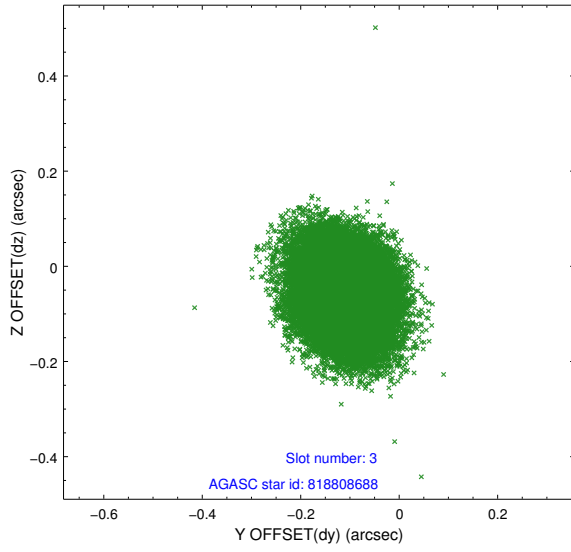
Slot Statistics

slot	status	id	mag	n_pts	med_dy	med_dz	dr1	dr2	ra	dec	mean_y	mean_z
0	FID	ACIS-S-2	7.11	12245	-0.018	-0.016	0.012	0.019	0.000000	0.000000	-753.62	-1725.09
1	FID	ACIS-S-4	7.21	12245	-0.003	0.013	0.028	0.038	0.000000	0.000000	2159.72	183.41
2	FID	ACIS-S-5	7.24	12245	-0.012	0.013	0.023	0.035	0.000000	0.000000	-1806.46	177.11
3	GUIDE	818808688	8.09	24481	-0.111	-0.051	0.088	0.139	262.067475	-20.963695	-1531.42	-2242.48
4	GUIDE	818808256	8.82	24487	-0.096	-0.049	0.085	0.139	263.255476	-21.831270	927.53	2180.76
5	GUIDE	818806904	9.87	24405	0.032	-0.092	0.104	0.172	262.317300	-21.245613	-663.66	-1251.74
6	GUIDE	818806888	9.72	24465	0.057	0.086	0.118	0.198	263.030968	-21.219468	-1132.75	1098.66
7	GUIDE	818808400	10.27	24270	0.119	0.102	0.136	0.221	262.897094	-22.049178	1887.64	1119.80

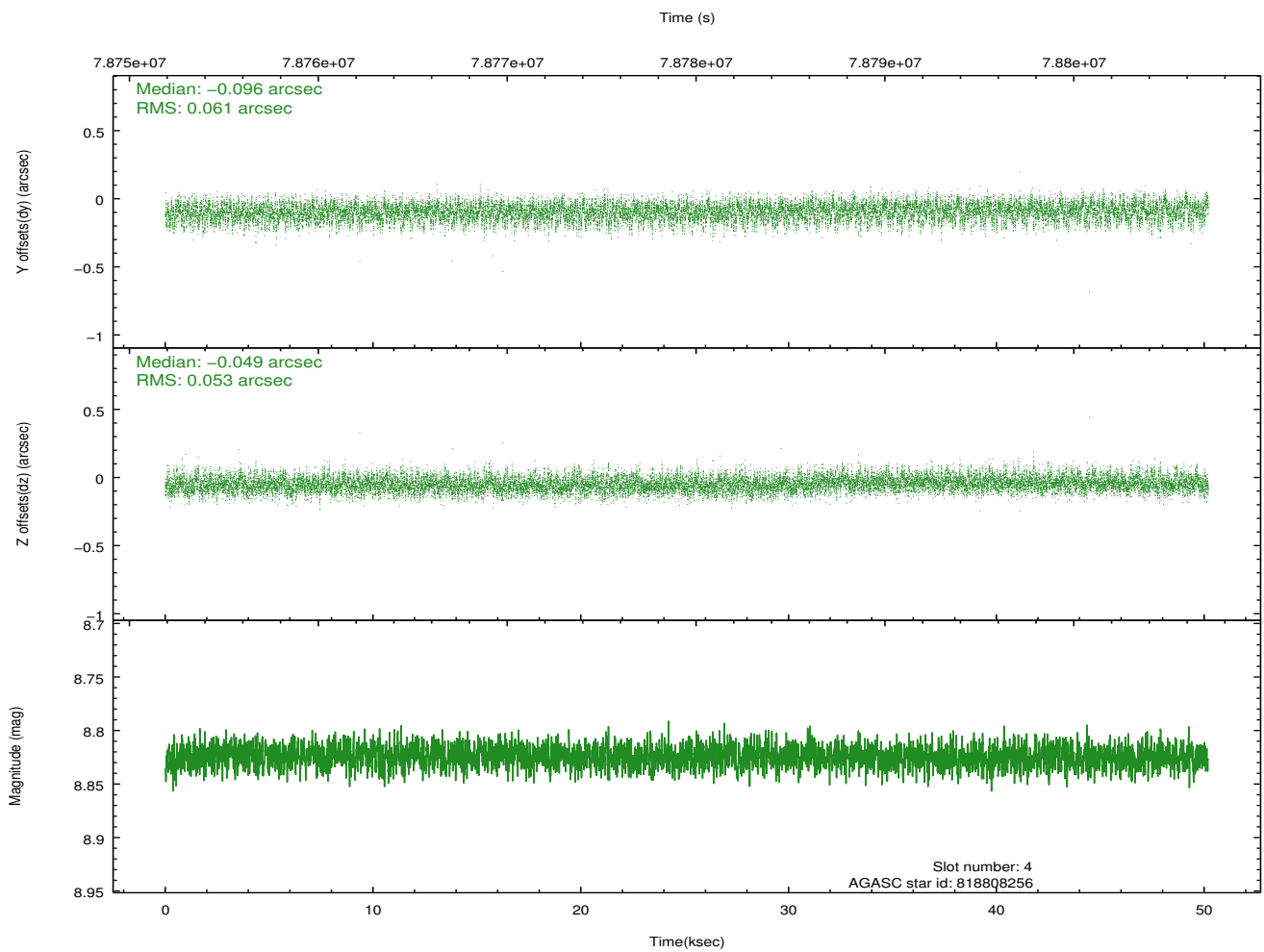
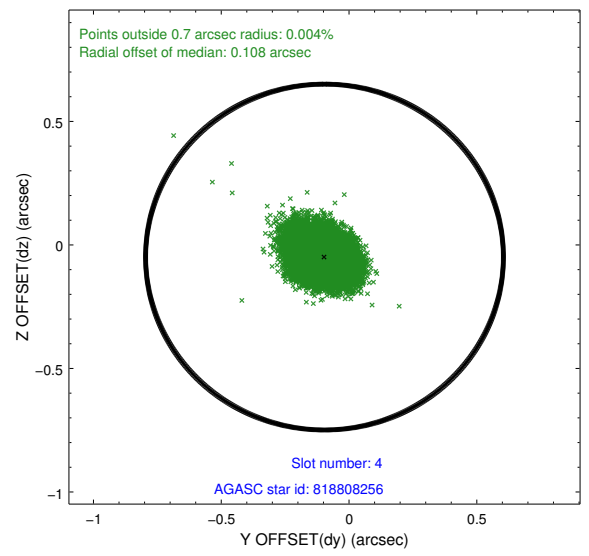
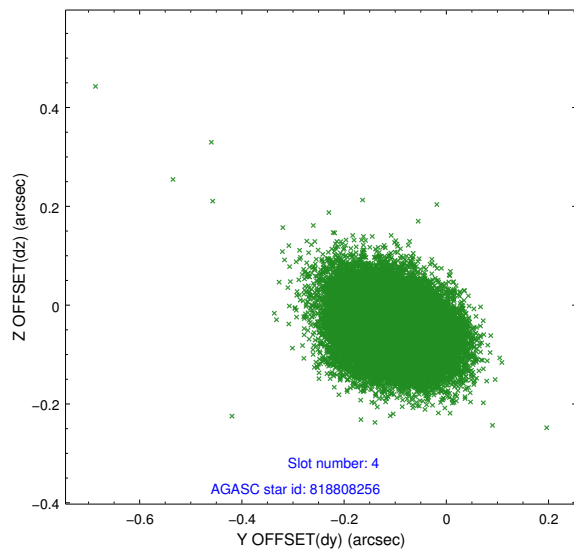
∞

2.4 Star Slots

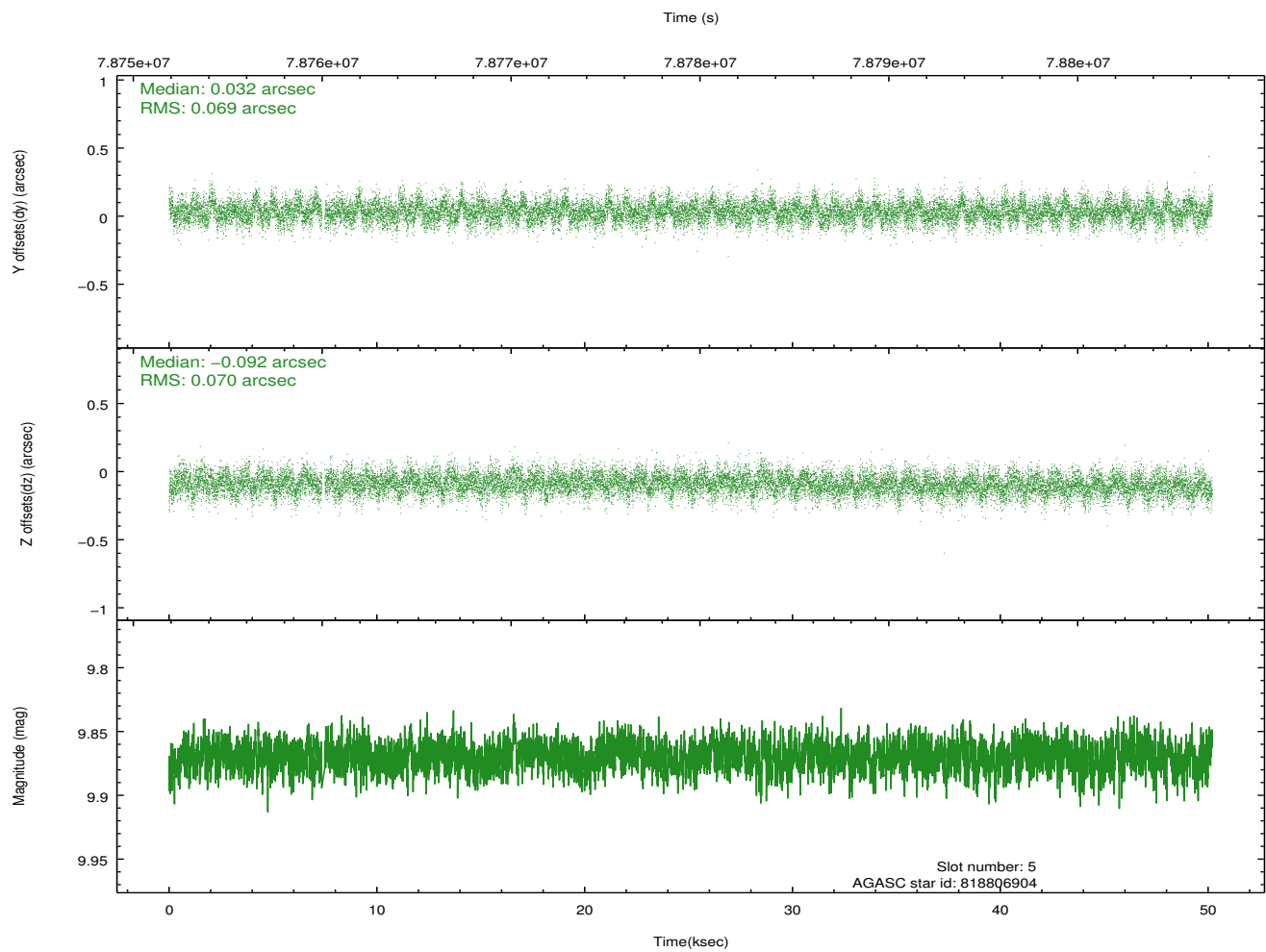
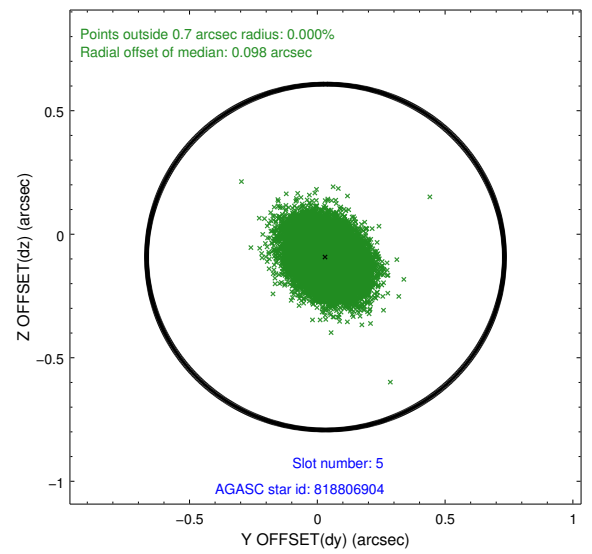
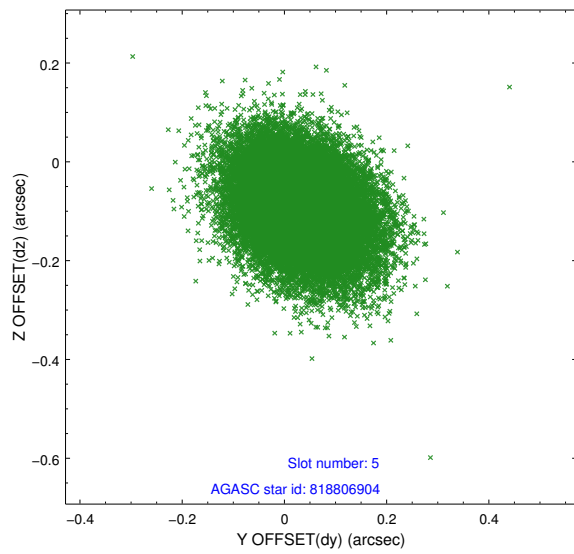
2.4.1 Slot 3



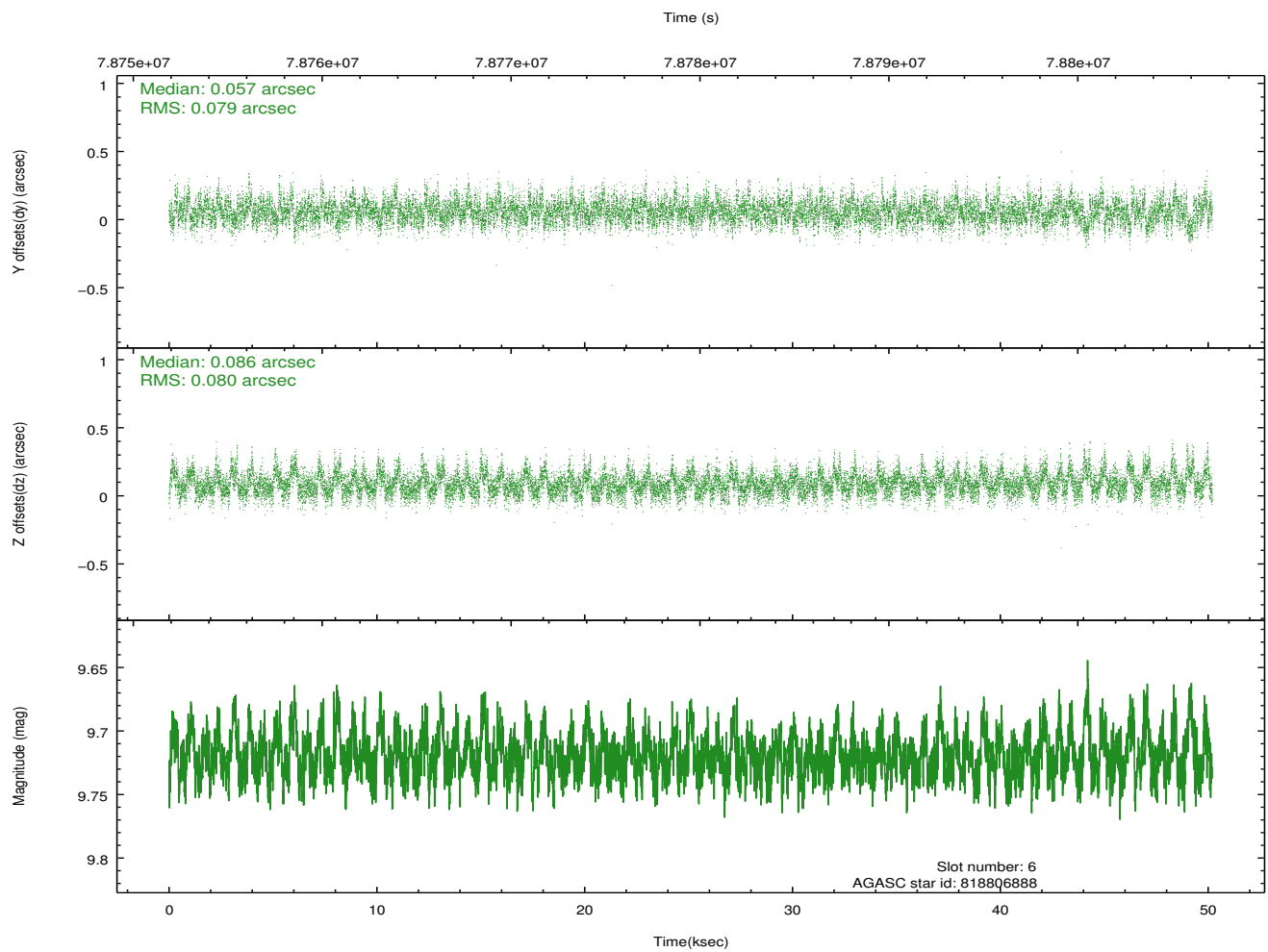
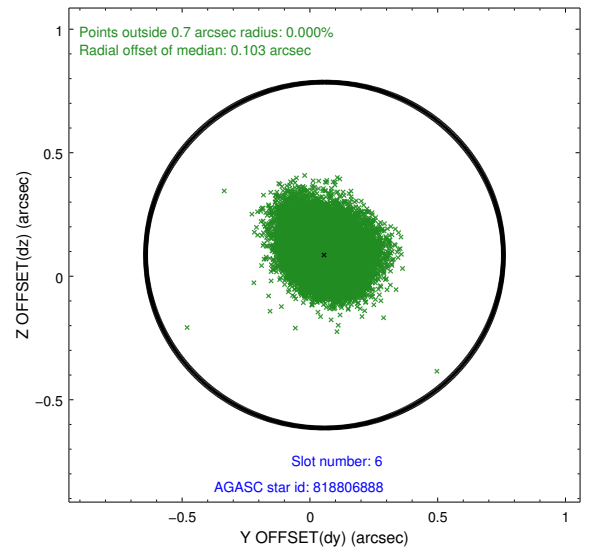
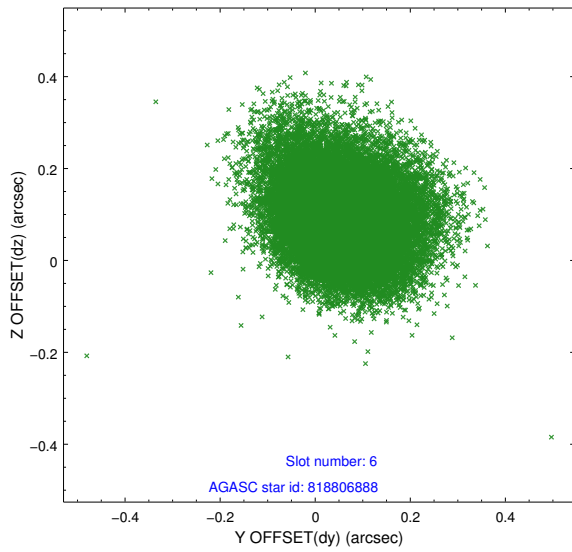
2.4.2 Slot 4



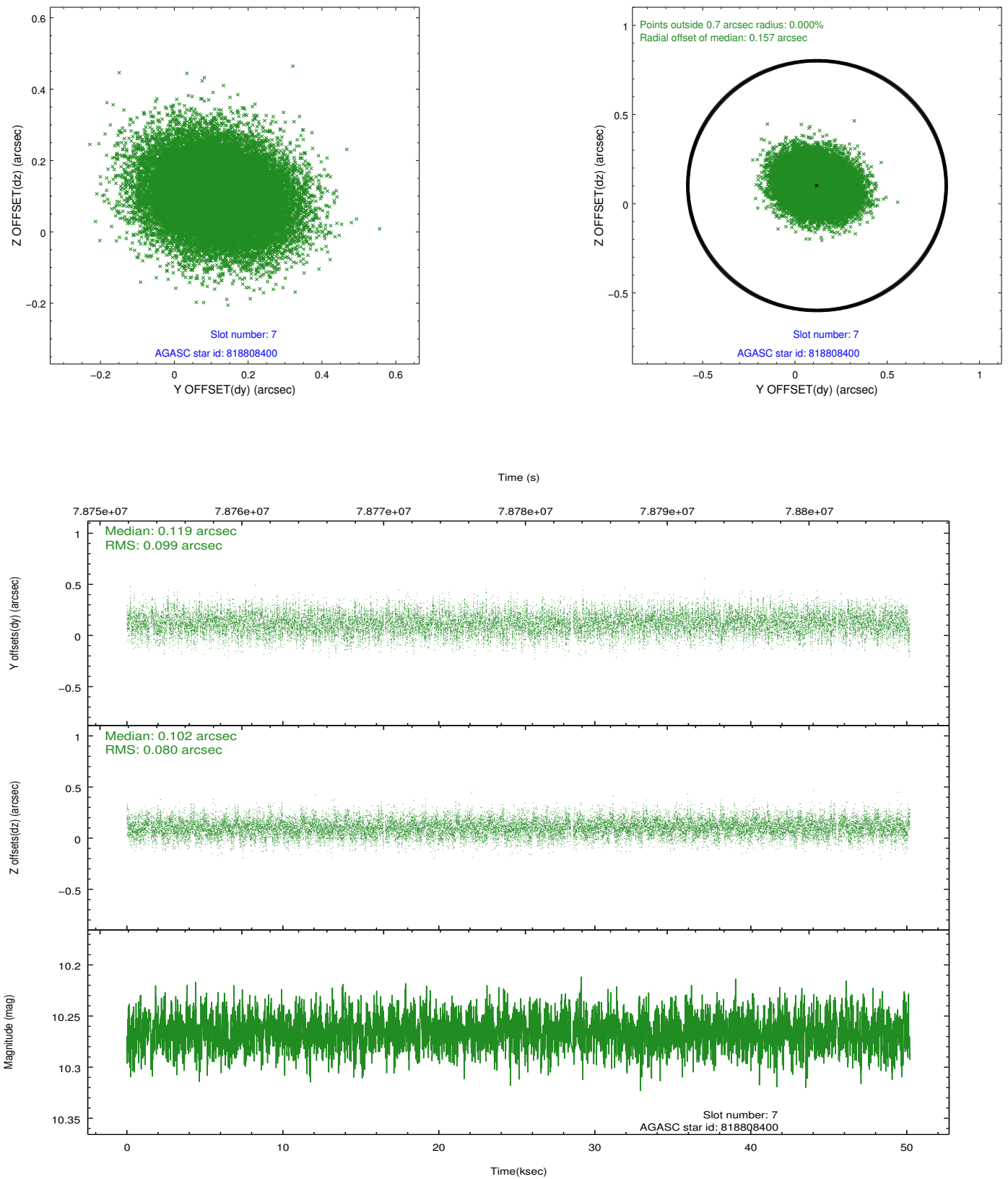
2.4.3 Slot 5



2.4.4 Slot 6

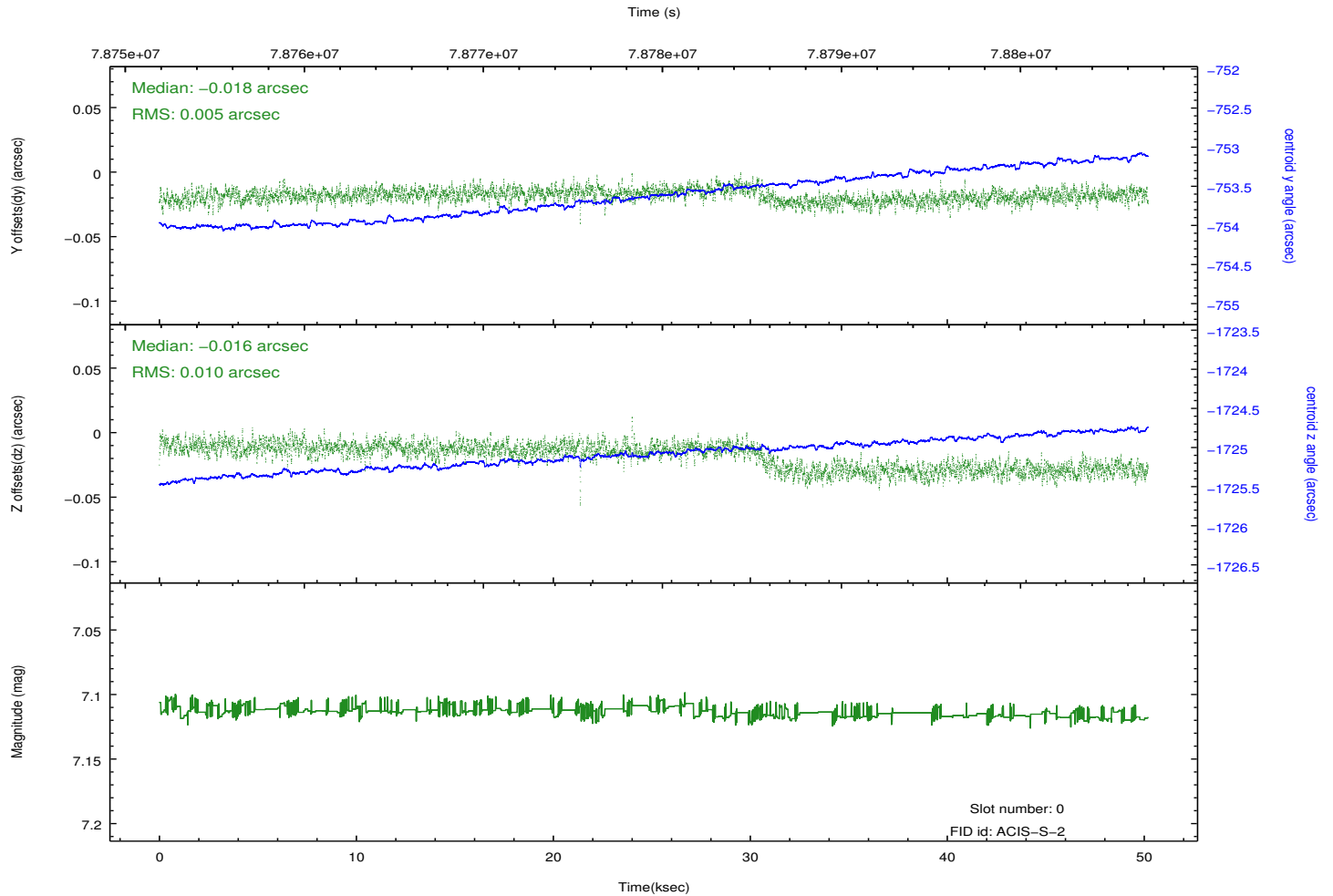
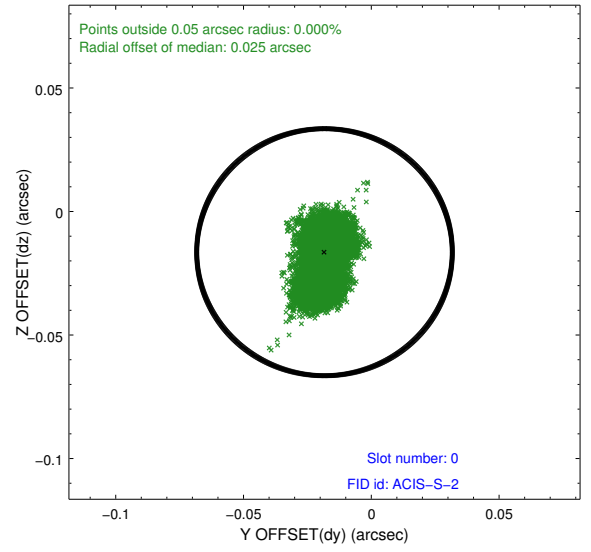
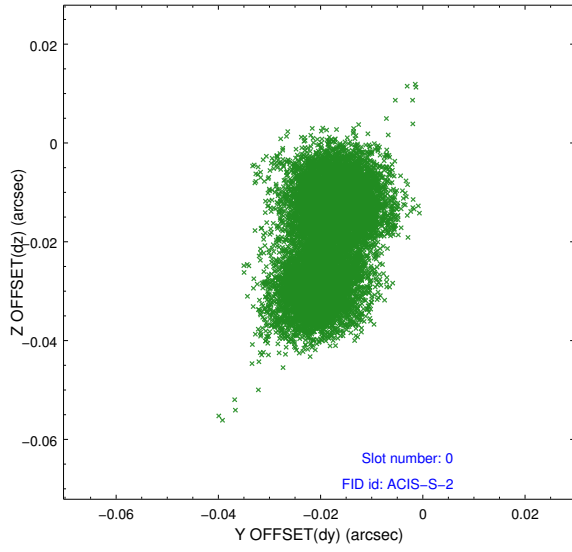


2.4.5 Slot 7

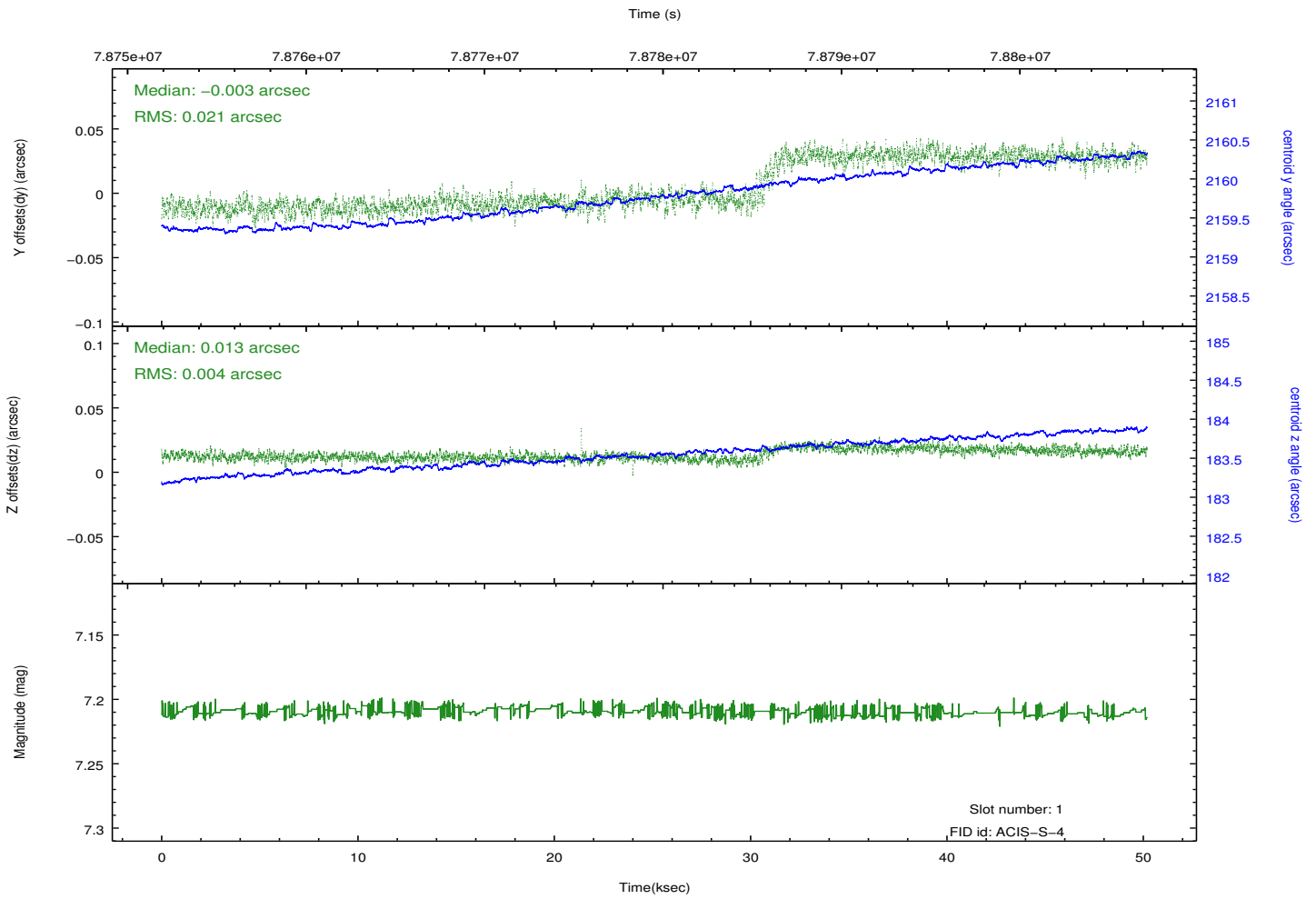
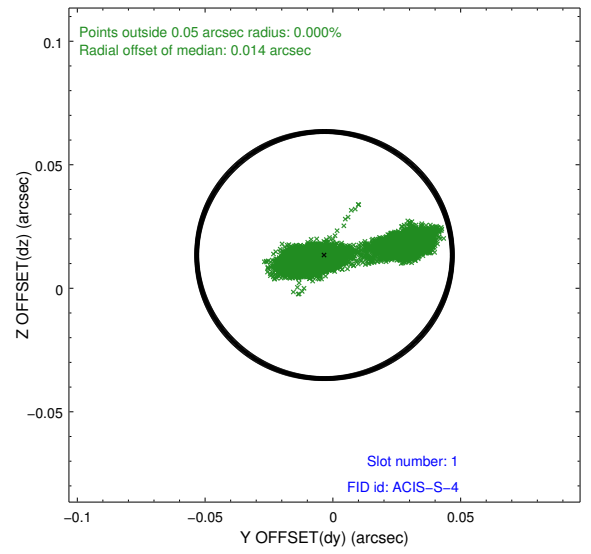
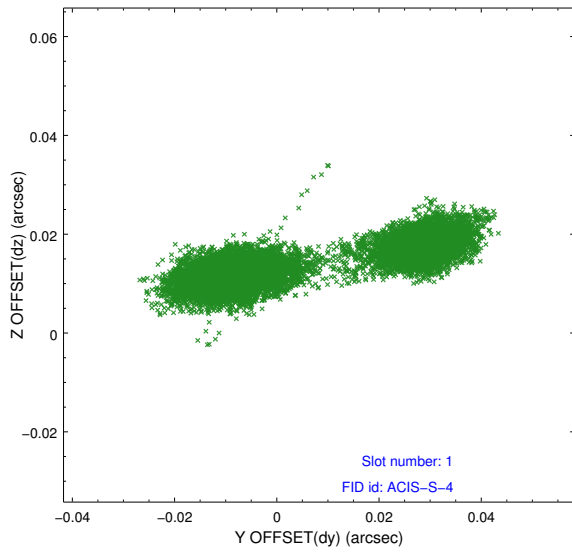


2.5 FID Slots

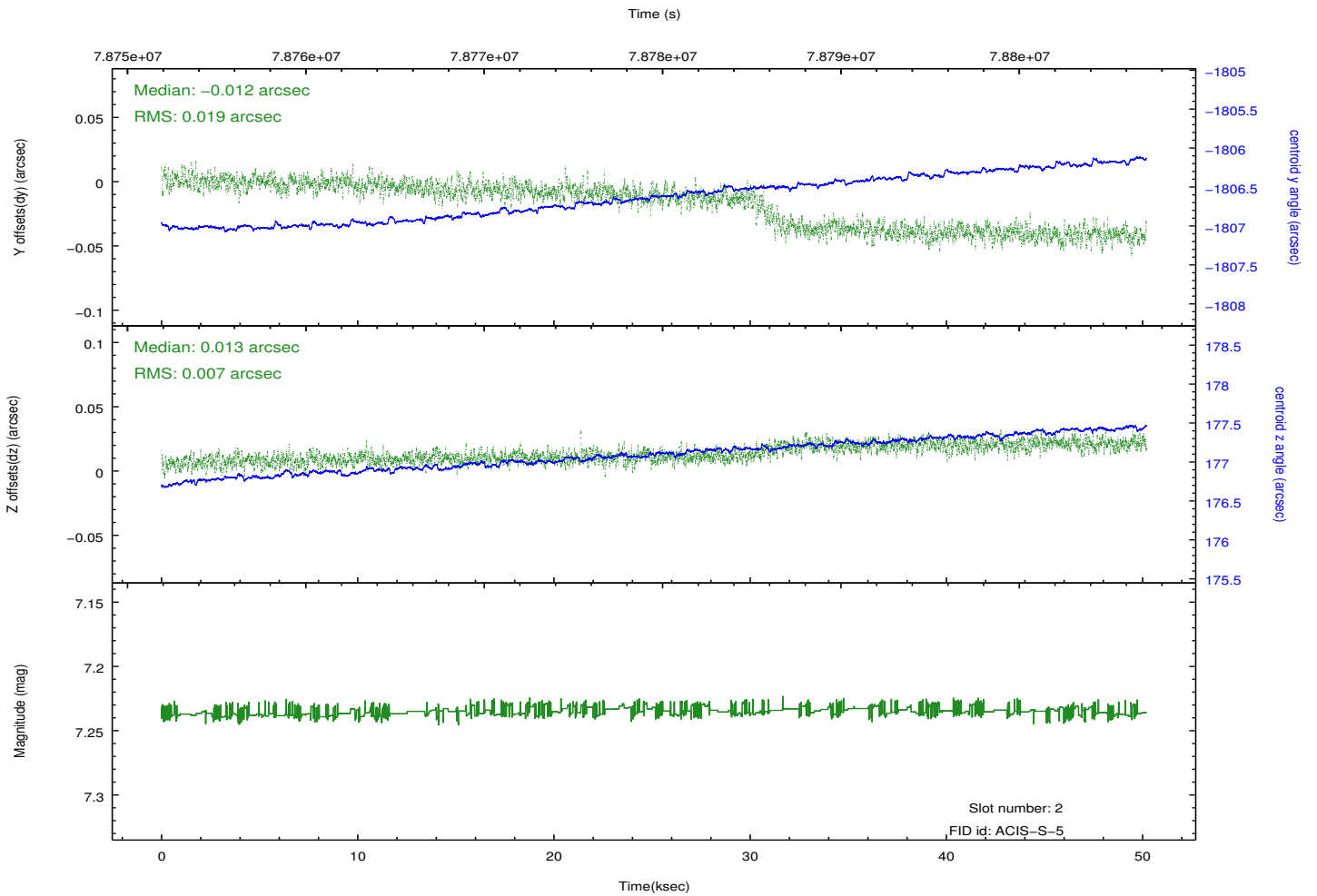
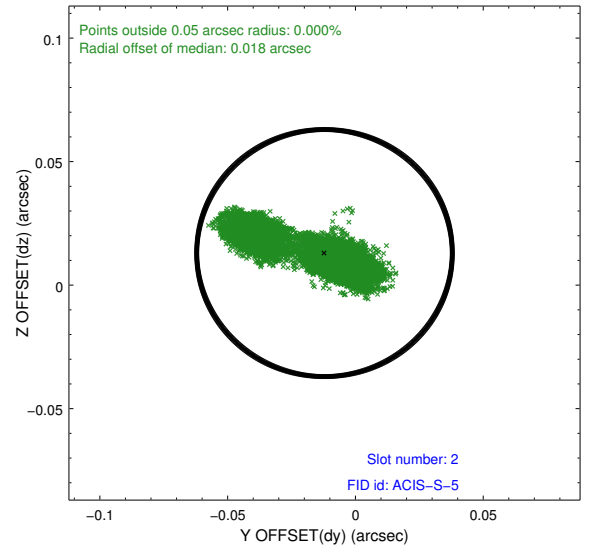
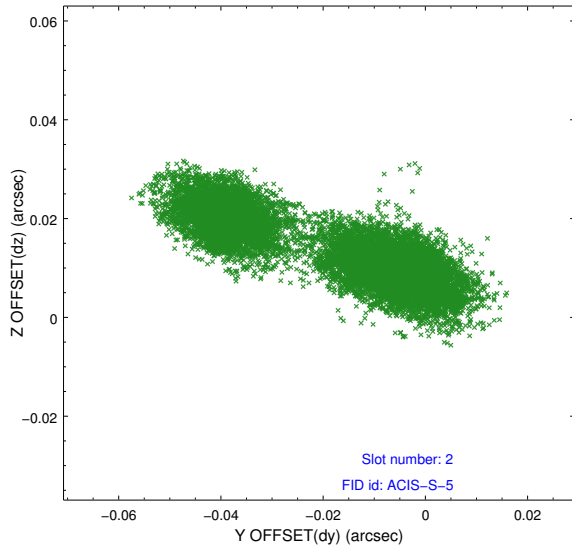
2.5.1 Slot 0



2.5.2 Slot 1



2.5.3 Slot 2



A Summary

A.1 Status

V&V Scientist	Beth Sundheim
V&V Date (YYYY-MM-DD)	2012.09.05
V&V Edition	1
V&V Disposition and Status	OK
V&V Charge Time	49.452

A.2 Comments