

# V&V Reference Report

## L2 ASCDS Version : 8.4.5

Observation 12056 - L2 Version 2  
Chandra X-Ray Center

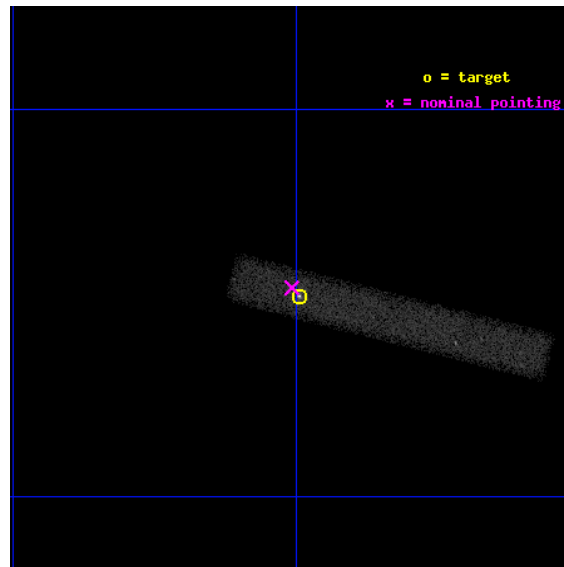
L2 Processing Date : Jun 18 2012

## Contents

<b>1</b>	<b>Front</b>	<b>2</b>
<b>2</b>	<b>OBI</b>	<b>3</b>
2.1	OBI . . . . .	3
2.1.1	Images . . . . .	3
2.1.2	Bias . . . . .	3
2.1.3	Parameters . . . . .	4
2.1.4	Events . . . . .	4
2.2	Compared Parameters . . . . .	5
2.3	Aspect . . . . .	6
2.4	Star Slots . . . . .	9
2.4.1	Slot 3 . . . . .	9
2.4.2	Slot 4 . . . . .	10
2.4.3	Slot 5 . . . . .	11
2.4.4	Slot 6 . . . . .	12
2.4.5	Slot 7 . . . . .	13
2.5	FID Slots . . . . .	14
2.5.1	Slot 0 . . . . .	14
2.5.2	Slot 1 . . . . .	15
2.5.3	Slot 2 . . . . .	16
<b>A</b>	<b>Summary</b>	<b>17</b>
A.1	Status . . . . .	17
A.2	Comments . . . . .	17

# 1 Front

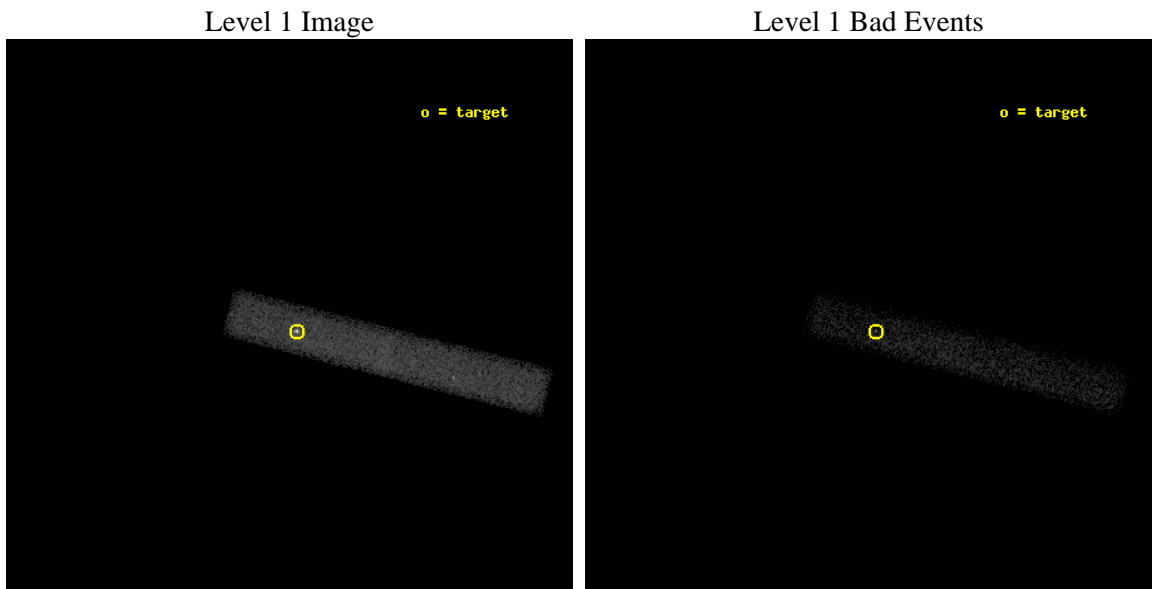
seq_num	702017	Sequence number
obs_id	12056	Observation id
title	The nature of X-ray jets in powerful core-dominated quasars	Propos
observer	Dr Martin Hardcastle	Principal investigator
object	PKS 0605-085	Source name
dtcycle	0	&#160
cycle	P	events from which exps? Prim/Second/Both
ra_targ	91.99875	Observer's specified target RA [deg]
dec_targ	-8.580556	Observer's specified target Dec [deg]
ra_nom	92.002141910936	Nominal RA [deg]
dec_nom	-8.5770832091669	Nominal Dec [deg]
roll_nom	14.157132615507	Nominal Roll [deg]
revision	2	Processing version of data
ontime	30398.398188114	Sum of GTIs [s]
liveltime	27569.7425976	Livetime [s]
ontime7	30398.398188114	Sum of GTIs [s]
l2events	29129	Number of level 2 events



## 2 OBI

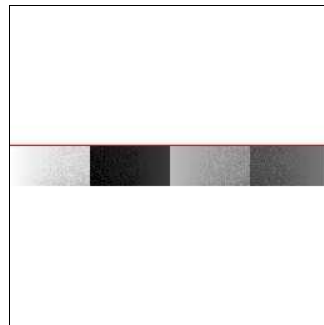
### 2.1 OBI

#### 2.1.1 Images



#### 2.1.2 Bias

Chip 7



### 2.1.3 Parameters

obi_num	0	Obi number	sched_exp_time	30211.841000	[s] Scheduled observation exposure time
ascdsver	8.4.5	Processing system revision	ontime	30398.398188114	Sum of GTIs [s]
caldbver	4.4.10	&#160	ontime7	30398.398188114	Sum of GTIs [s]
date	2012-06-18T07:26:21	Date and time of file creation	l1events	52375	Number of level 1 events
revision	2	Processing version of data			

### 2.1.4 Events

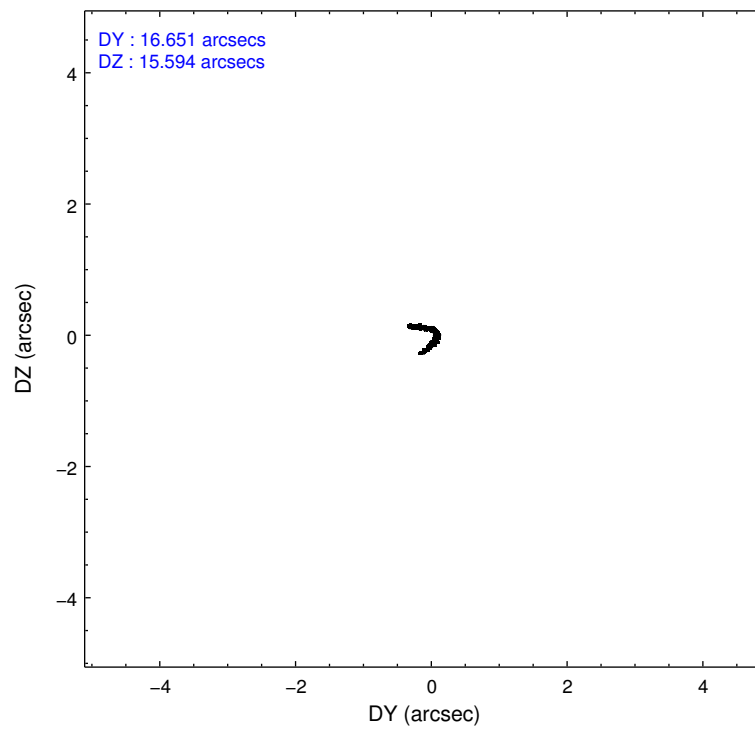
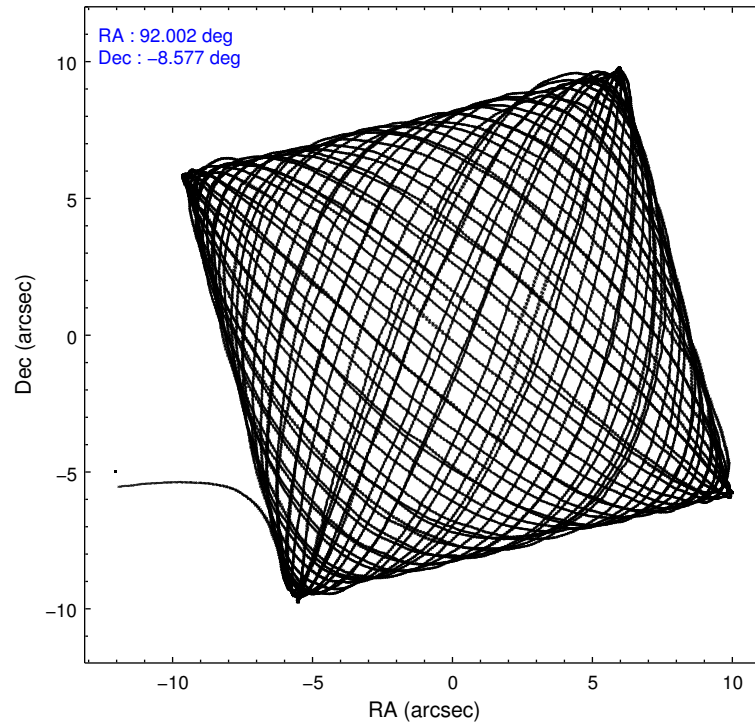
	<b>ccd 7</b>
level 1 events	52375
rejected events	22269
rejected %	42%

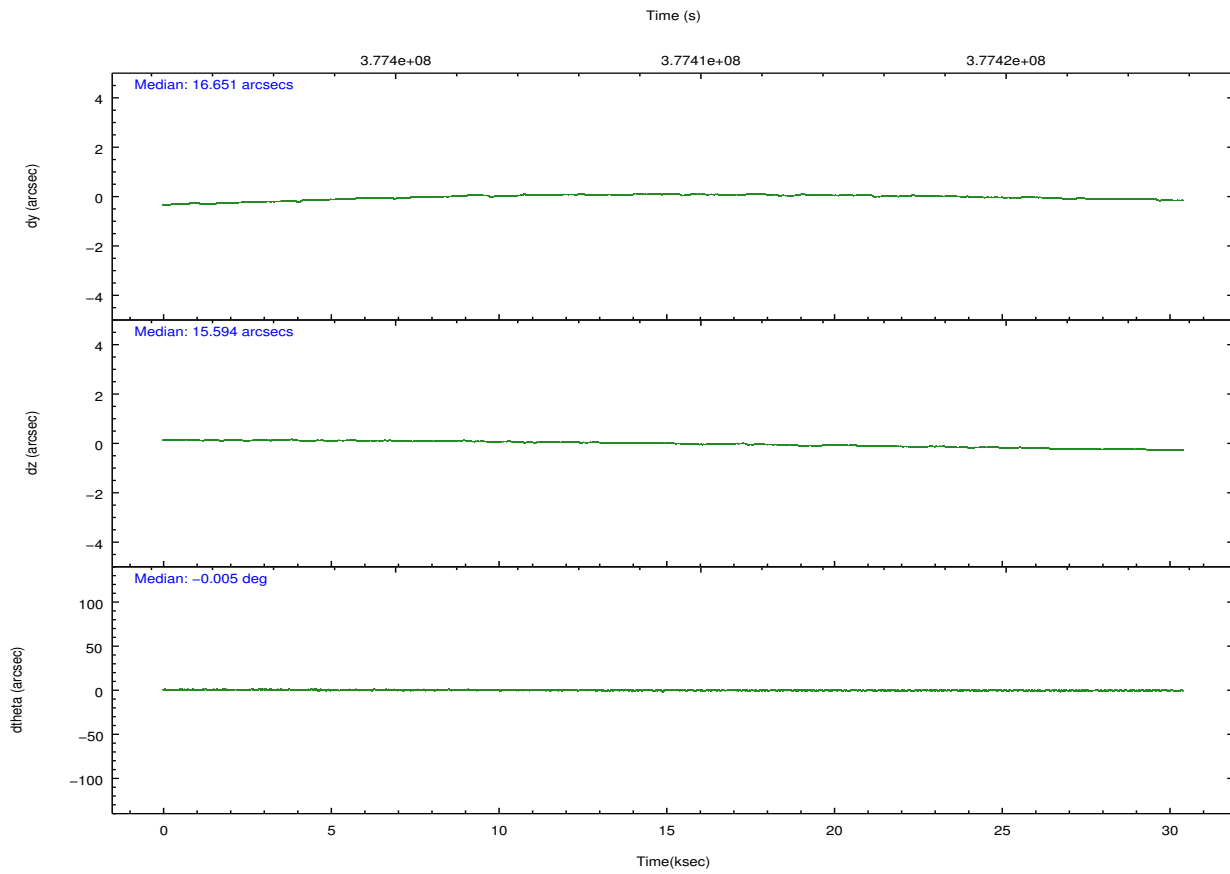
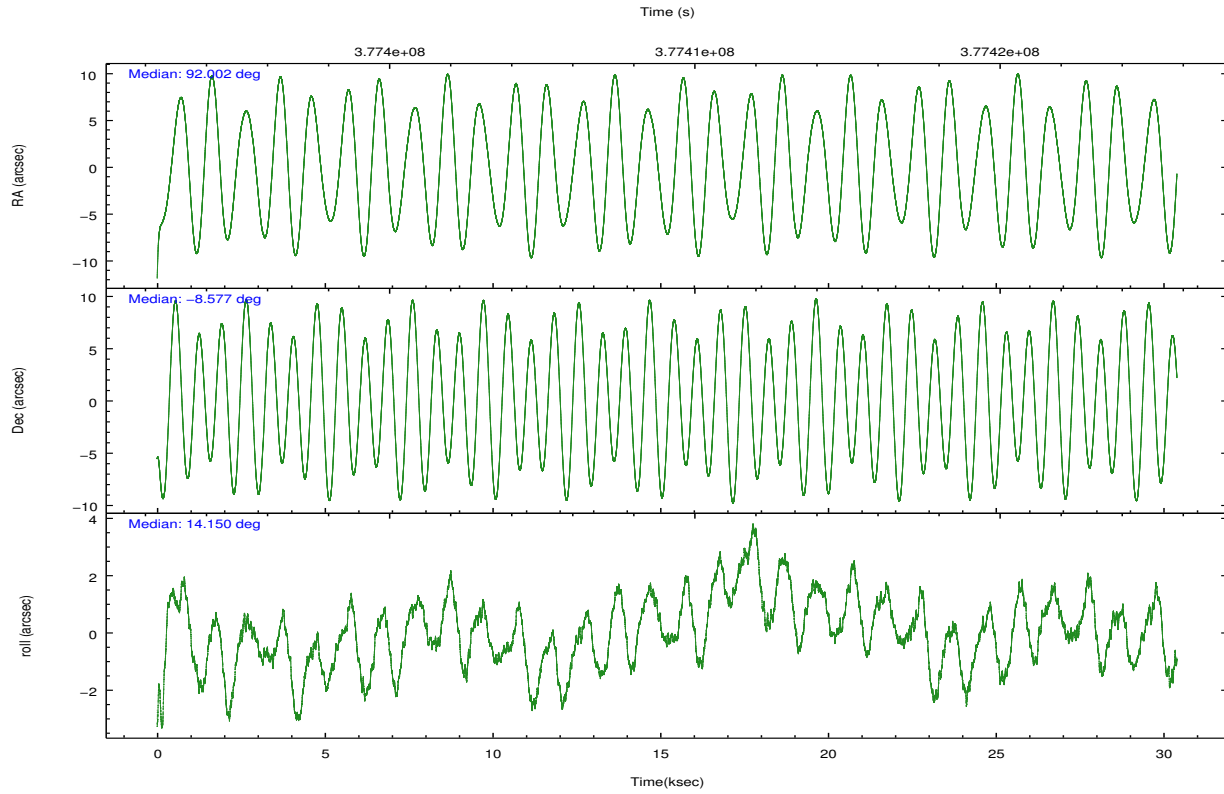
	<b>ccd 7</b>
grade 0 events	4455
	8%
grade 1 events	92
	0%
grade 2 events	6727
	12%
grade 3 events	4159
	7%
grade 4 events	4038
	7%
grade 5 events	4480
	8%
grade 6 events	11795
	22%
grade 7 events	16629
	31%

## 2.2 Compared Parameters

Parameter	Planned	Actual	Parameter	Planned	Actual
Instrument	ACIS	ACIS	Obspar format version number	7	7
Detector	ACIS-7	ACIS-7	Obspar file type	PREDICTED	ACTUAL
Grating	NONE	NONE	Obspar update status	NONE	UPDATED
Data mode	FAINT	FAINT	Number of optional ACIS chips dropped	0	0
Observation mode	POINTING	POINTING	On-chip summing requested	N	N
[deg] Pointing RA	91.982589	92.0021419109359	Subarray requested	CUSTOM	1/8
[deg] Pointing Dec	-8.596397	-8.577083209166863	Subarray start row	449	449
[deg] Pointing Roll	13.997586	14.15713261550716	Subarray row count	128	128
[mm] SIM focus pos	-0.684267	-0.6828225247311905	Alternating exposures requested	N	N
[mm] SIM defocus	0	0.001444936568705701	[s] Primary exposure time	0.000000	0.4
[mm] SIM translation stage pos	-190.132523	-190.1400660498719			
[mm] SIM translation stage offset	0	0.00754346686406393			
[s] Observation start time (MET)	377394062.184000	377392424.19606			
Observation start date	2009-12-16T23:39:56	2009-12-16T23:13:44			
[s] Observation end time (MET)	377424274.184000	377424495.93518			
Observation end date	2009-12-17T08:03:28	2009-12-17T08:08:15			
Read mode	TIMED	TIMED			

## 2.3 Aspect



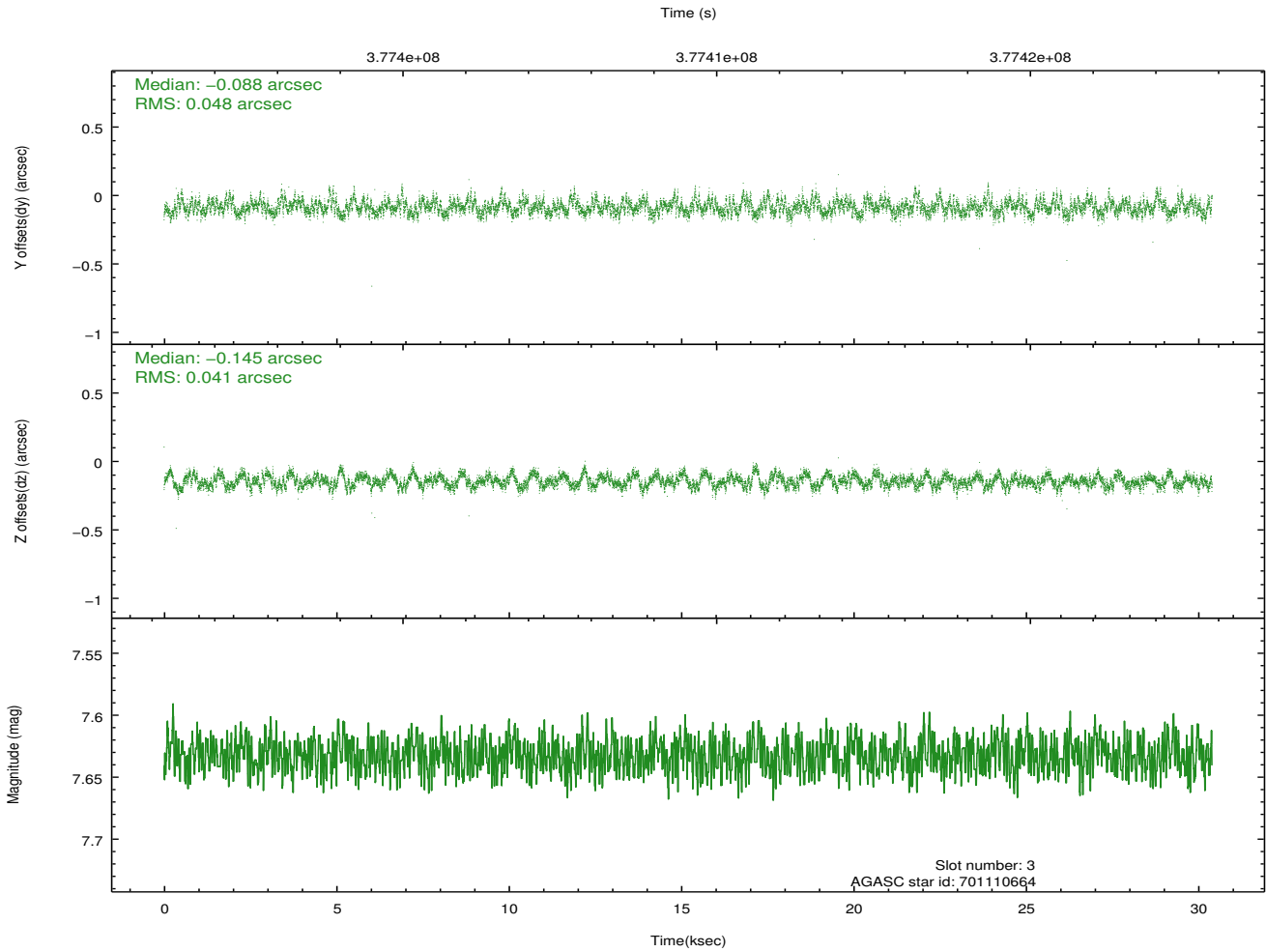
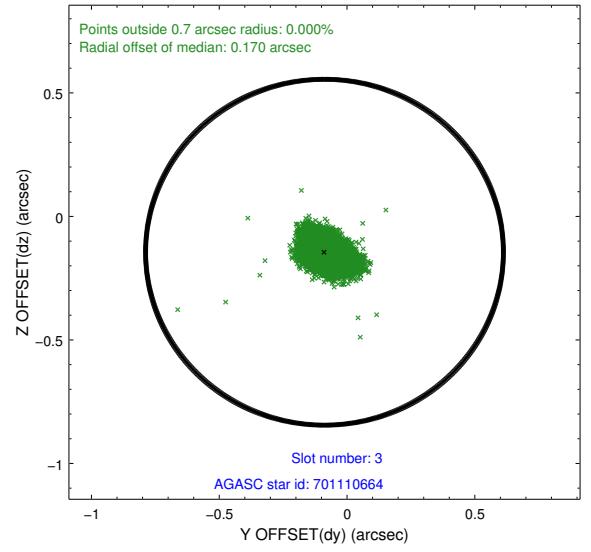
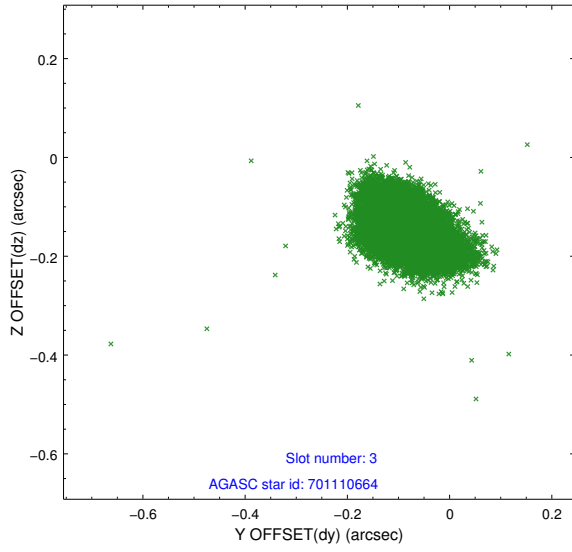


### Slot Statistics

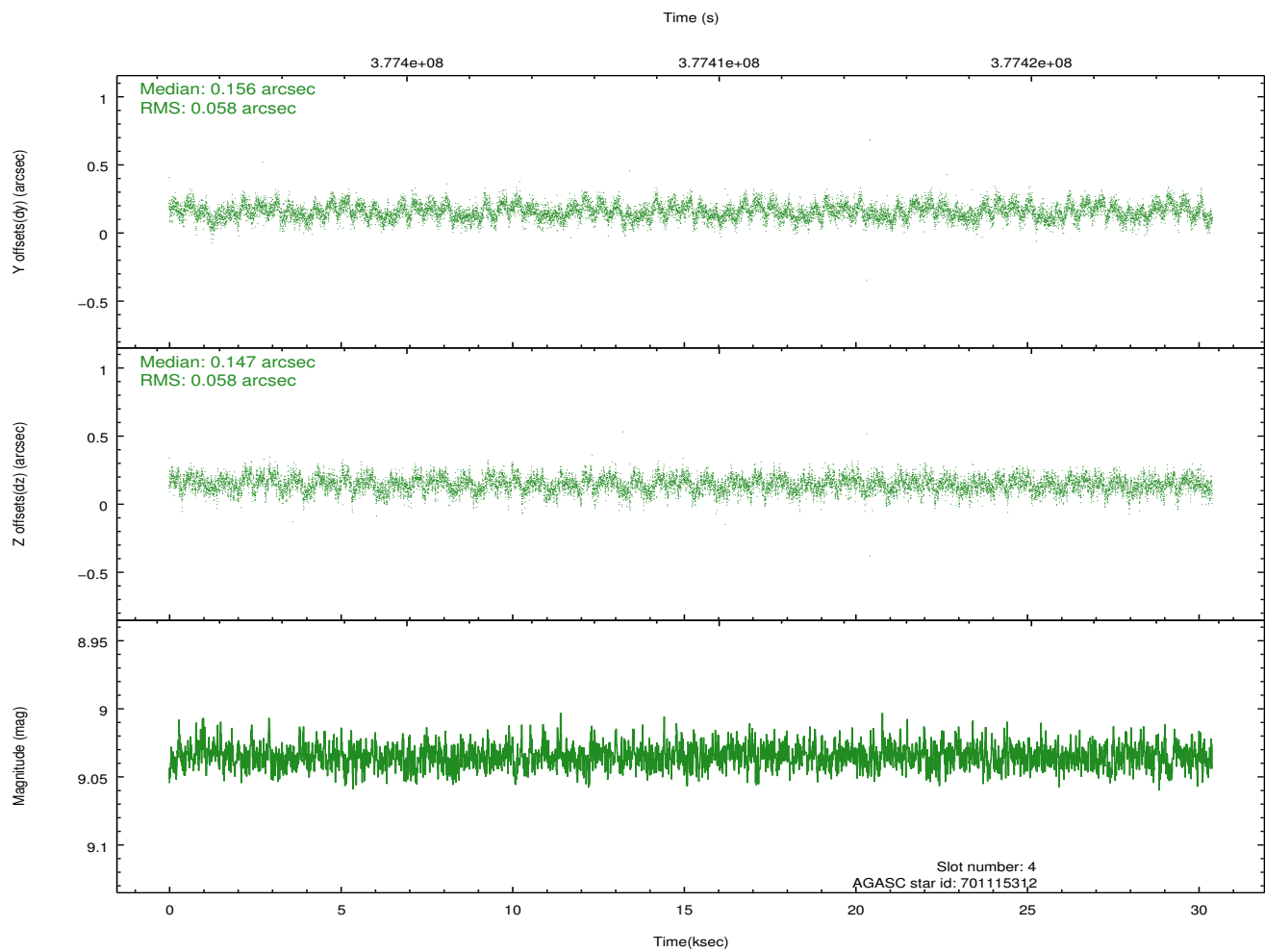
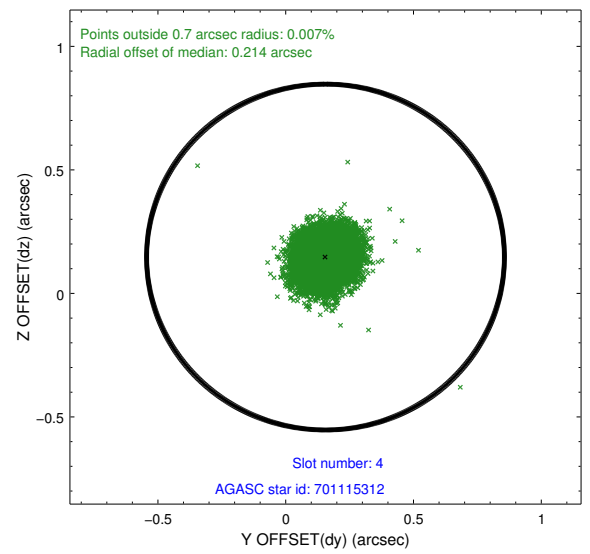
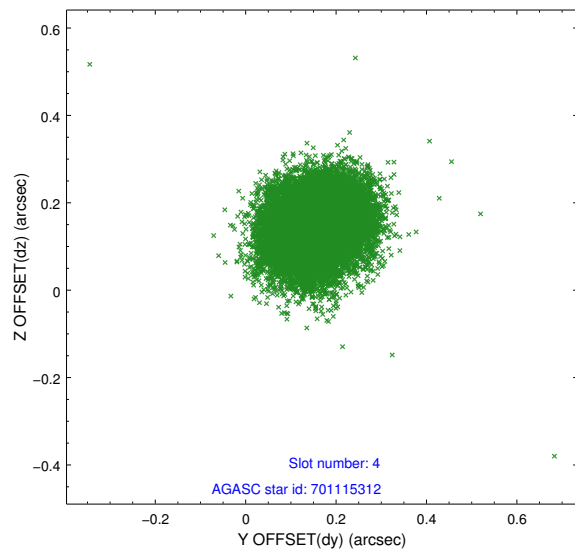
slot	status	id	mag	n_pts	med_dy	med_dz	dr1	dr2	ra	dec	mean_y	mean_z
0	FID	ACIS-S-2	6.89	7414	-0.097	-0.022	0.007	0.012	0.000000	0.000000	-769.70	-1737.00
1	FID	ACIS-S-4	6.97	7415	0.197	0.053	0.006	0.011	0.000000	0.000000	2143.81	171.53
2	FID	ACIS-S-5	7.00	7414	-0.130	-0.022	0.008	0.014	0.000000	0.000000	-1822.52	165.15
3	GUIDE	701110664	7.63	14828	-0.088	-0.145	0.066	0.109	91.584158	-8.350270	-1162.78	1202.17
4	GUIDE	701115312	9.04	14814	0.156	0.147	0.088	0.139	91.551680	-8.877721	-1731.82	-613.12
5	GUIDE	702822352	8.04	14824	-0.077	0.068	0.076	0.121	92.326569	-9.127061	723.92	-2149.62
6	GUIDE	701114072	9.39	14781	0.129	0.129	0.122	0.195	91.498132	-9.350911	-2326.42	-2220.67
7	GUIDE	702823864	7.12	14827	-0.129	-0.200	0.069	0.113	92.190386	-7.936361	1293.32	2125.98

## 2.4 Star Slots

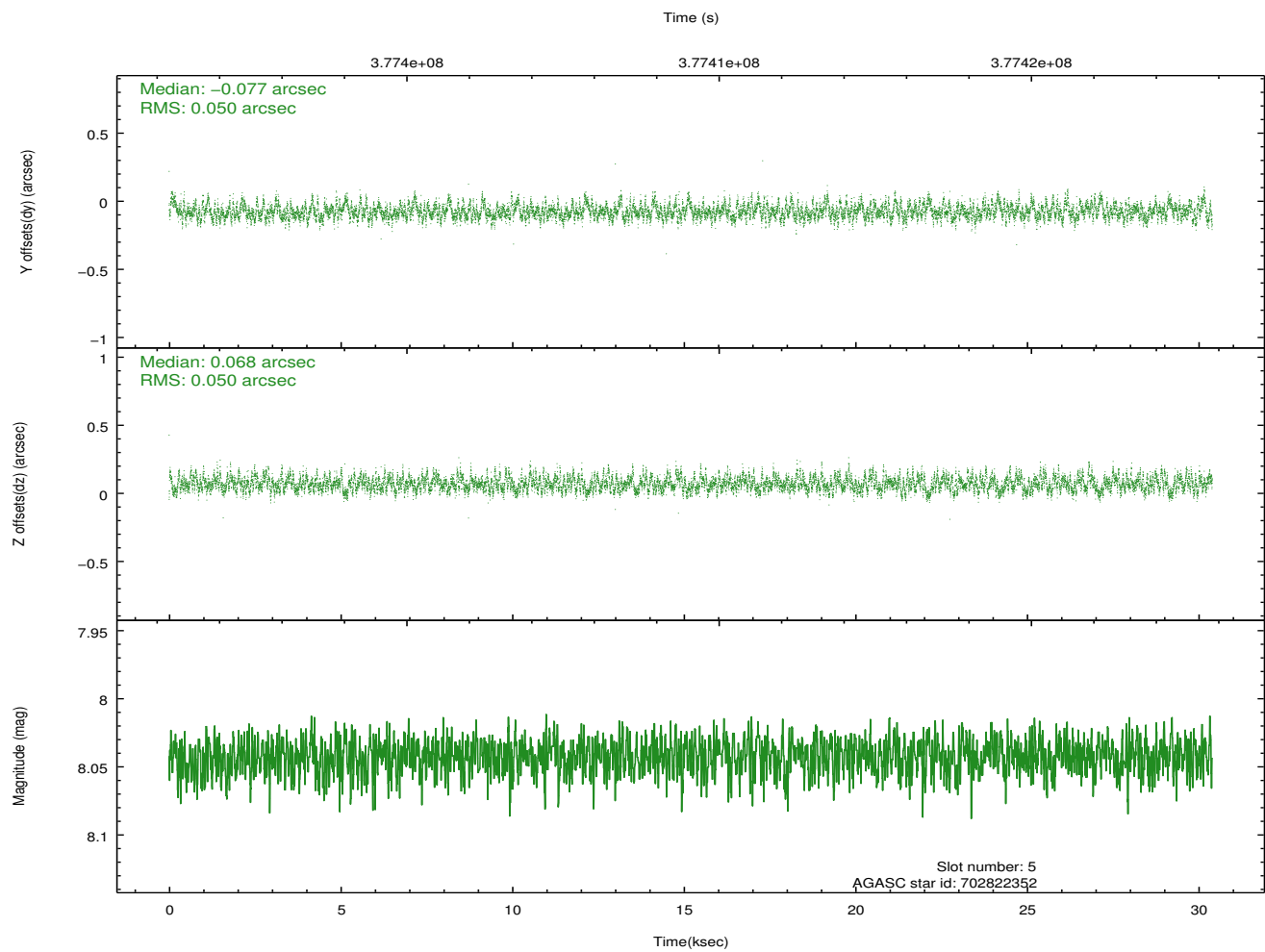
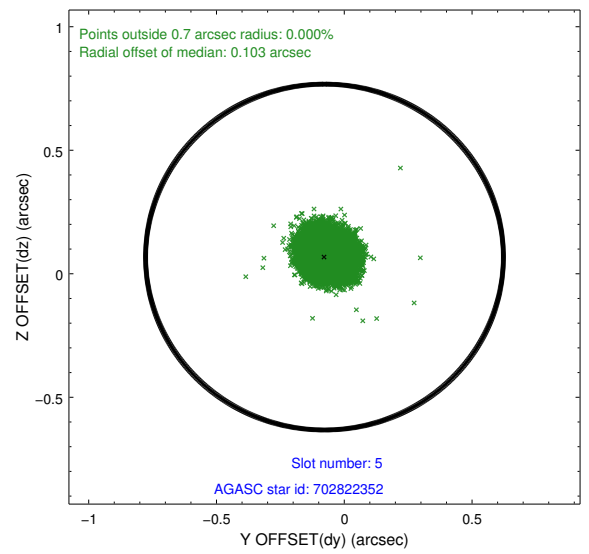
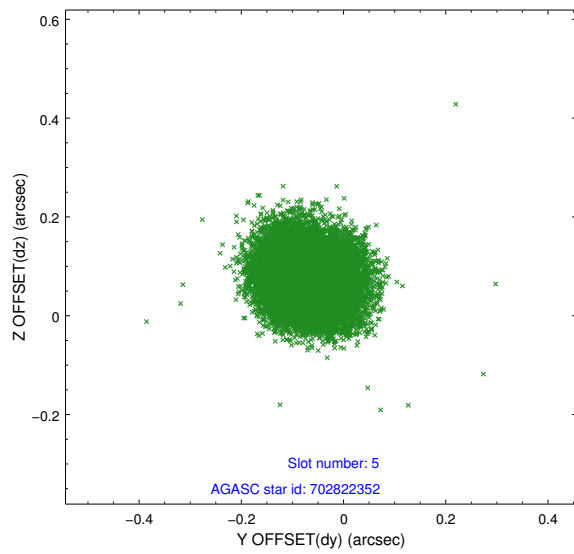
### 2.4.1 Slot 3



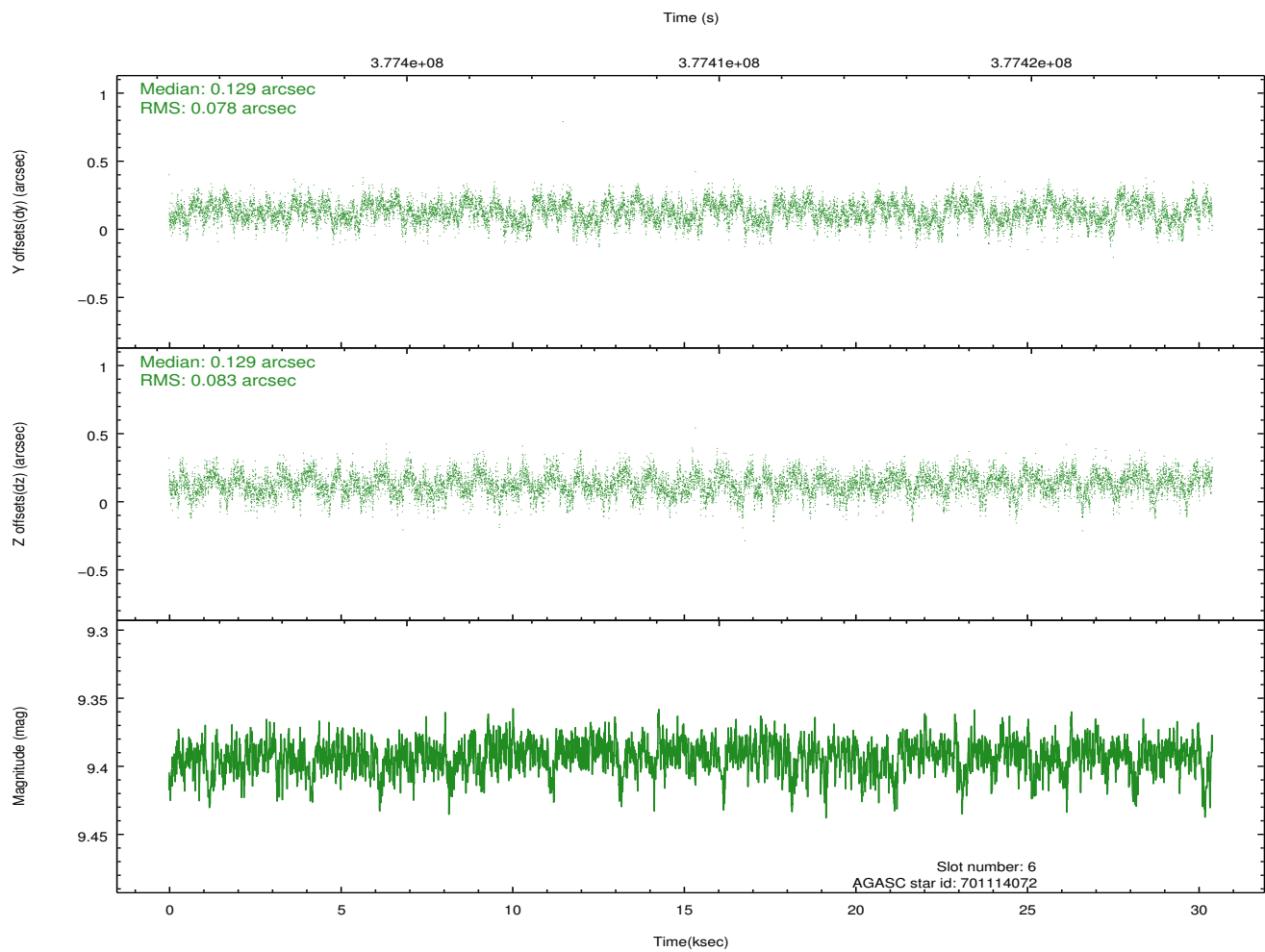
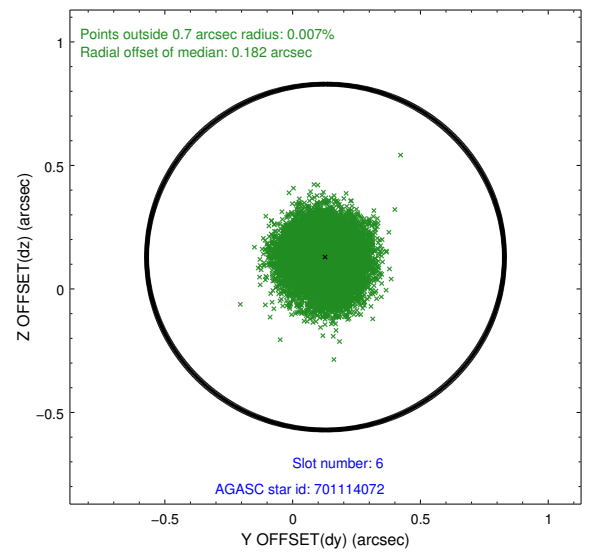
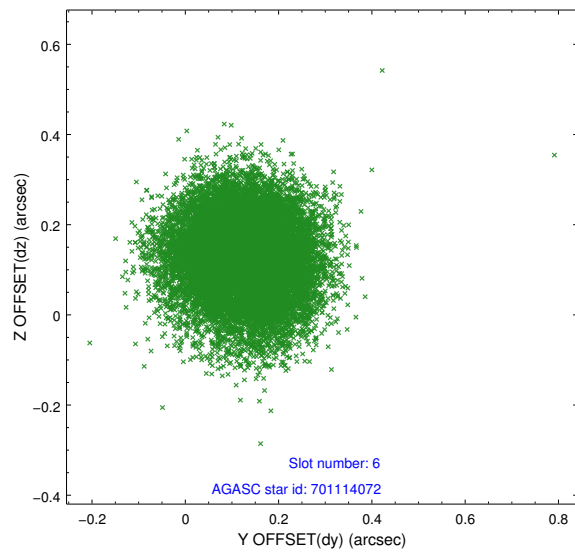
## 2.4.2 Slot 4



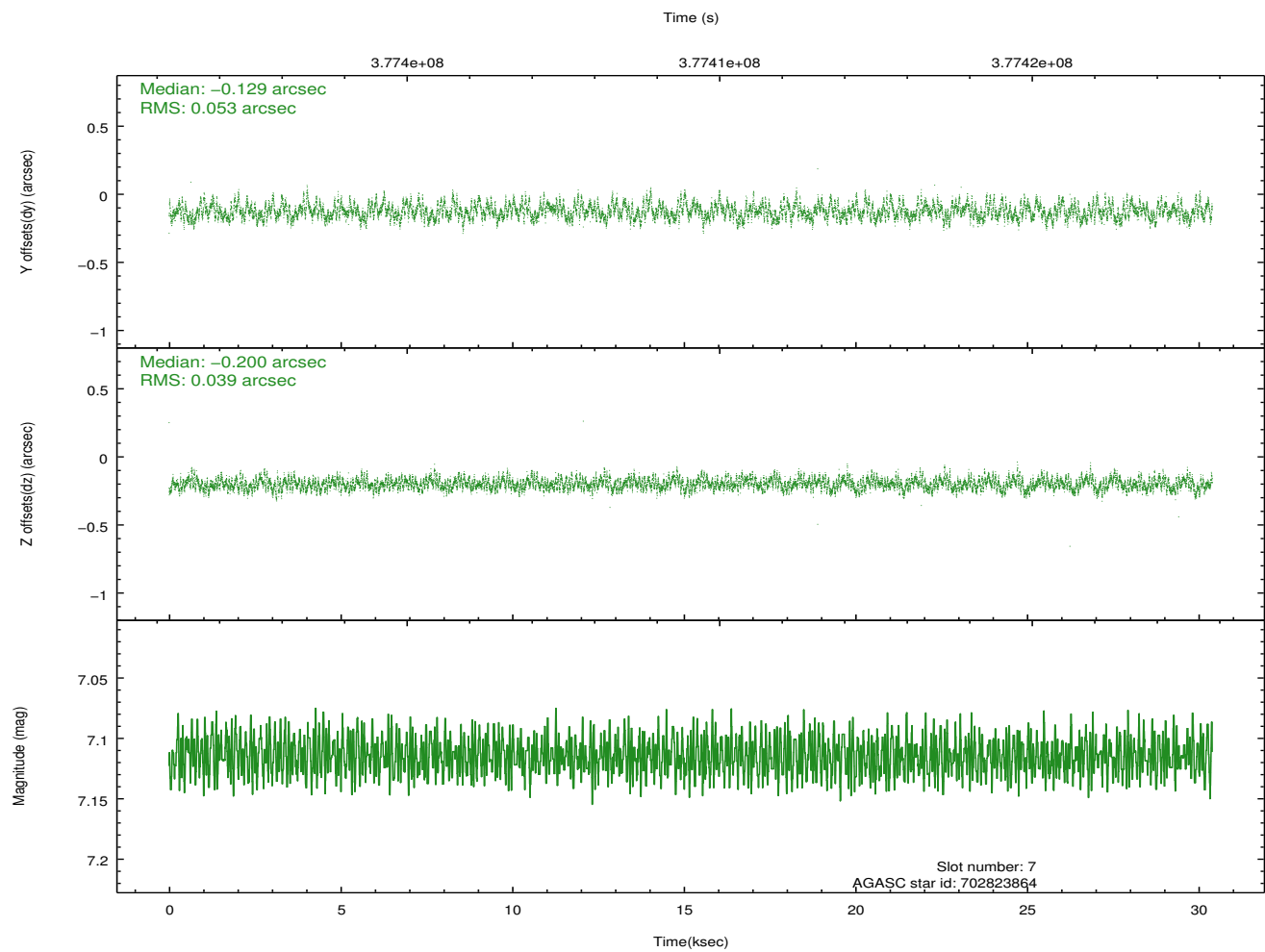
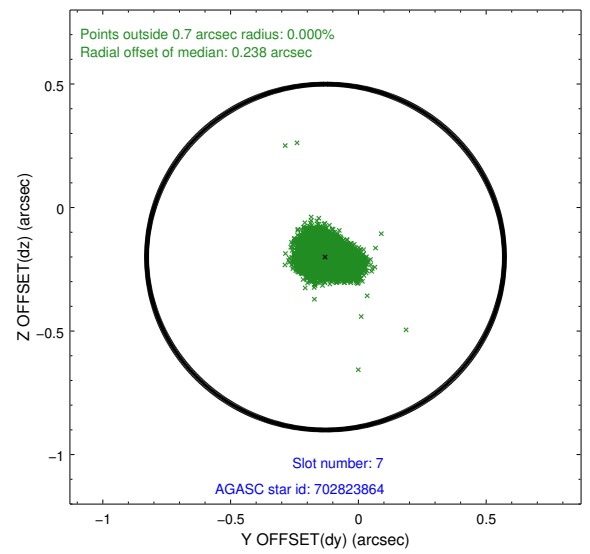
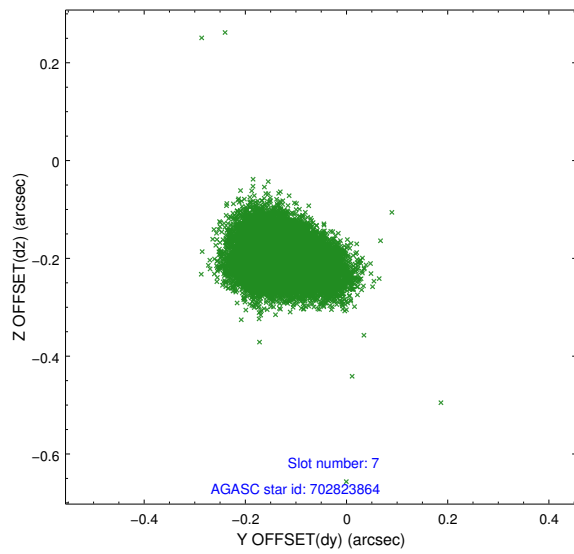
### 2.4.3 Slot 5



## 2.4.4 Slot 6

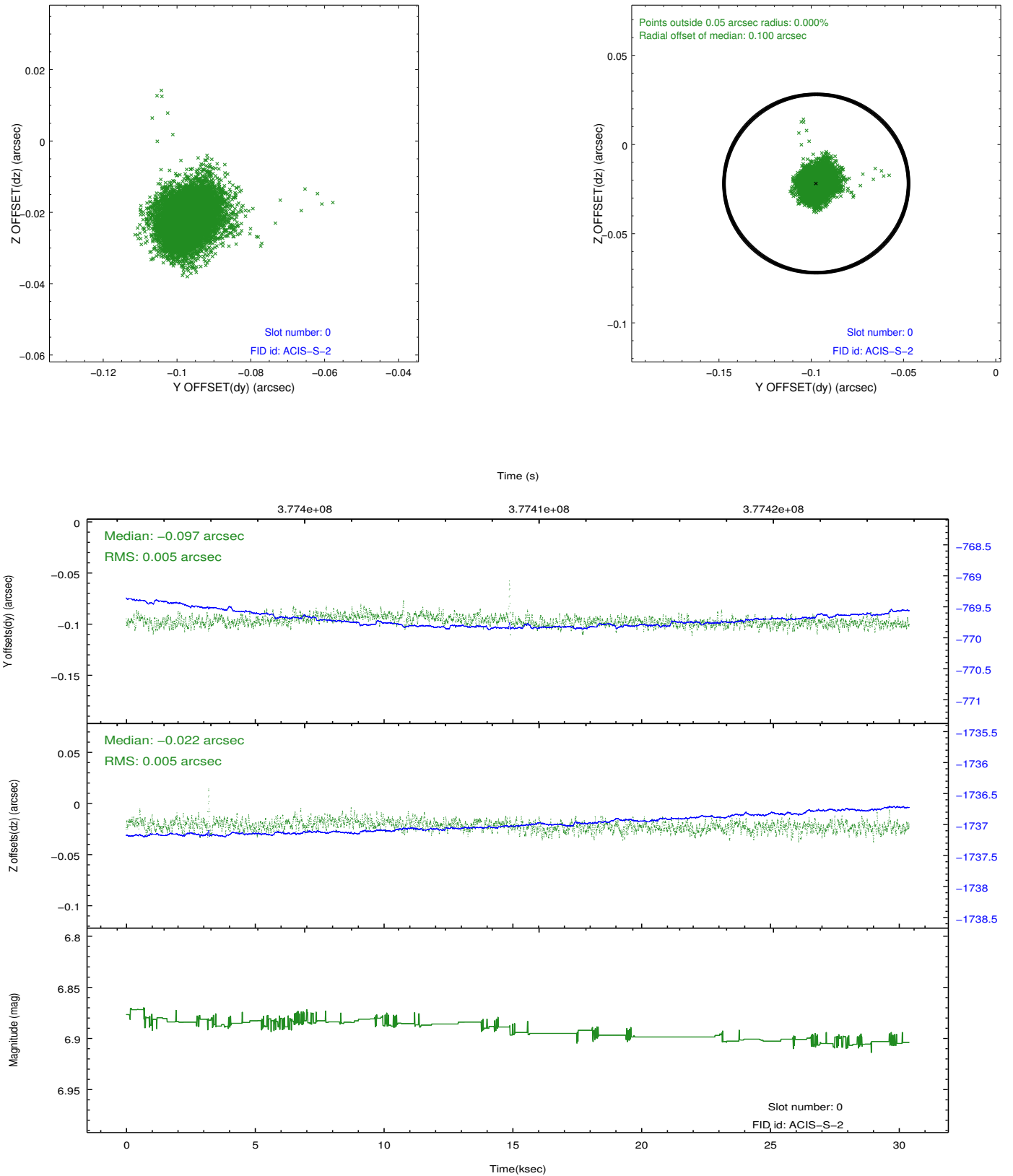


## 2.4.5 Slot 7

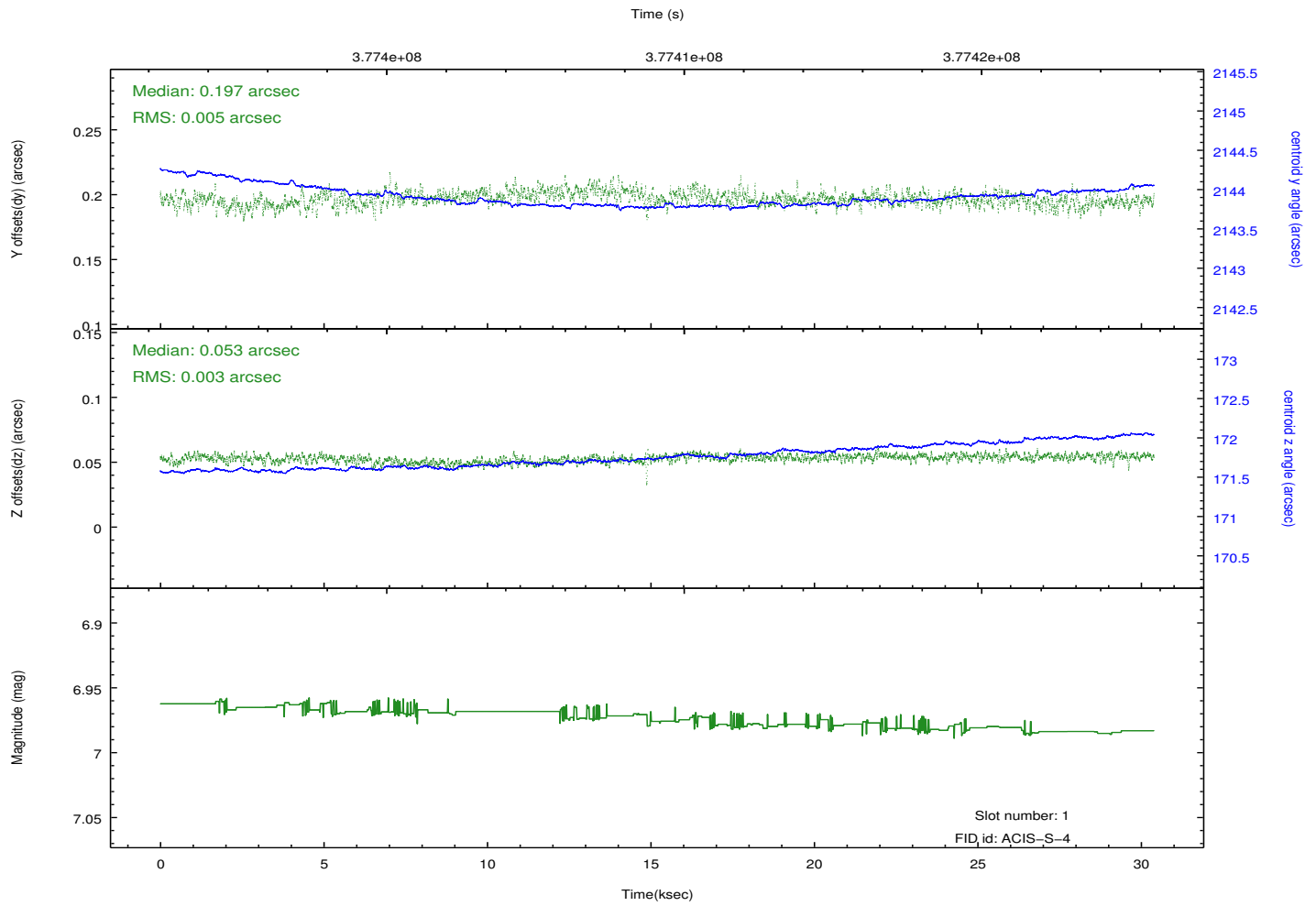
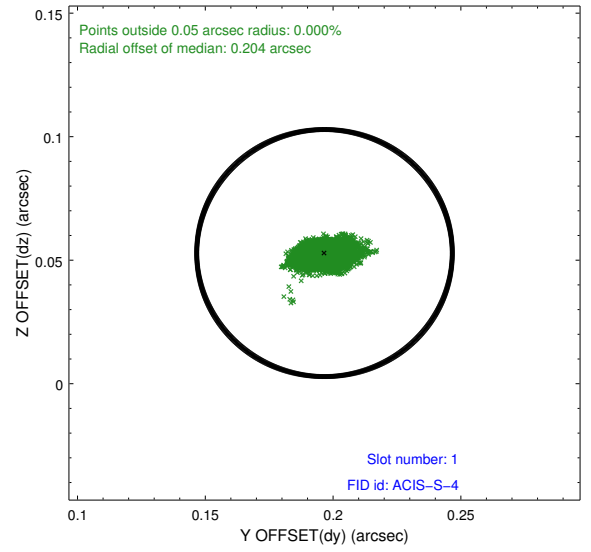
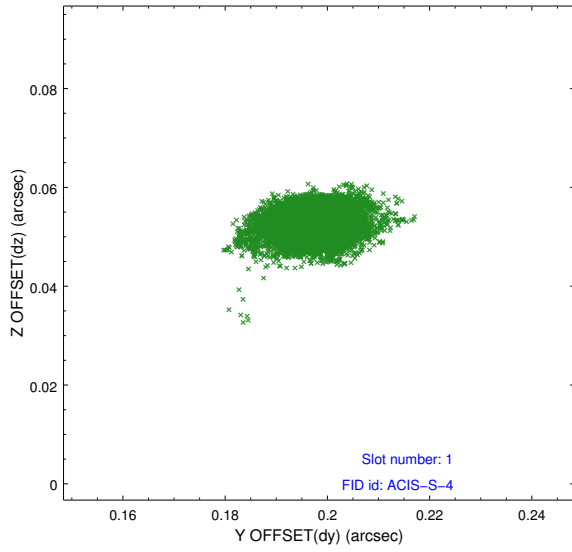


## 2.5 FID Slots

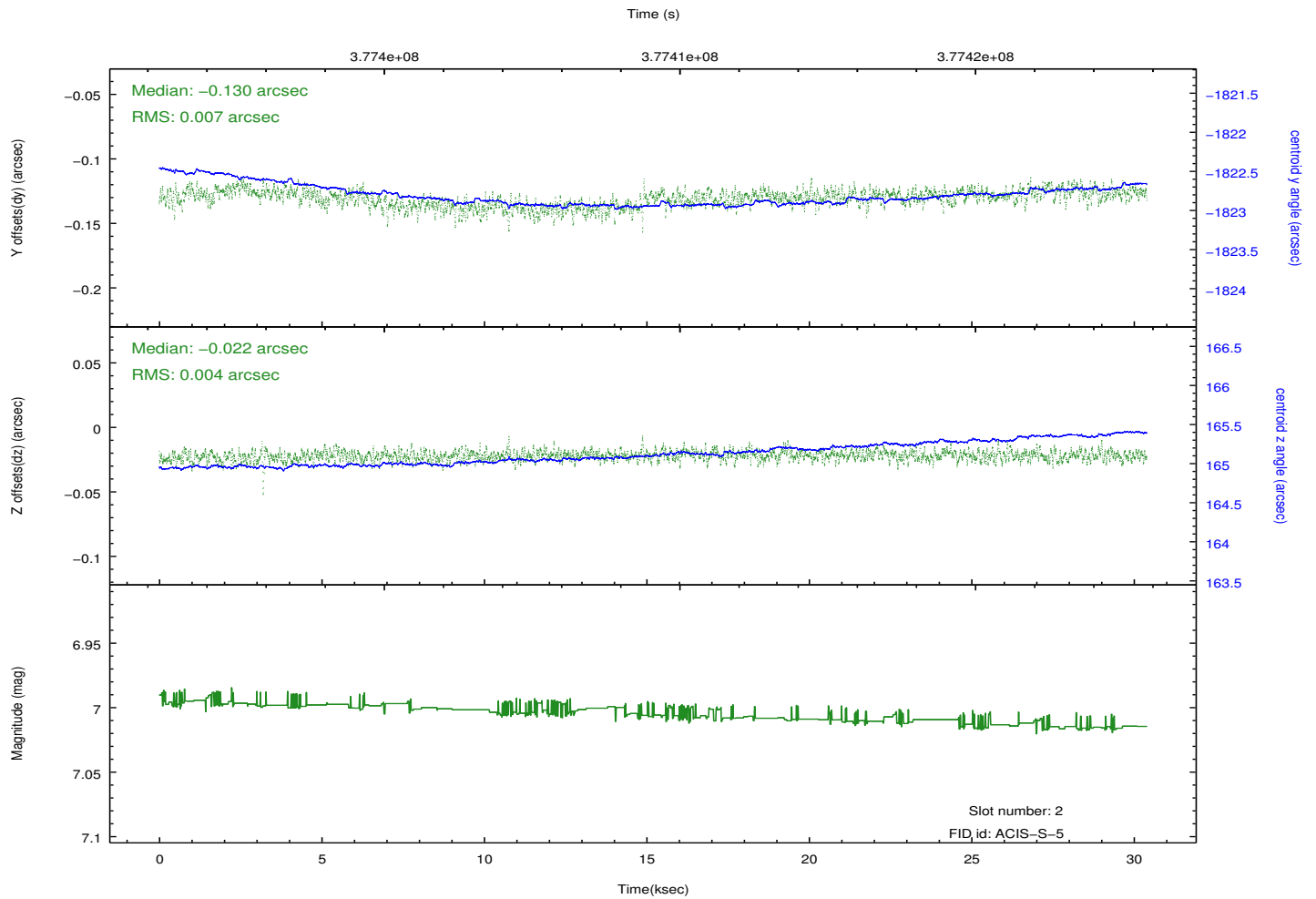
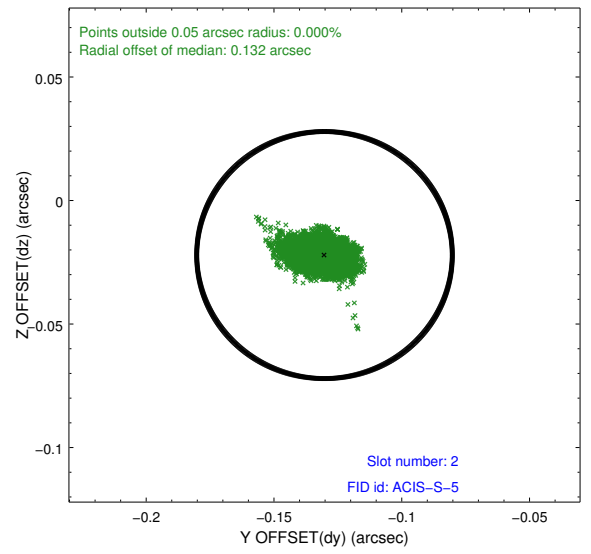
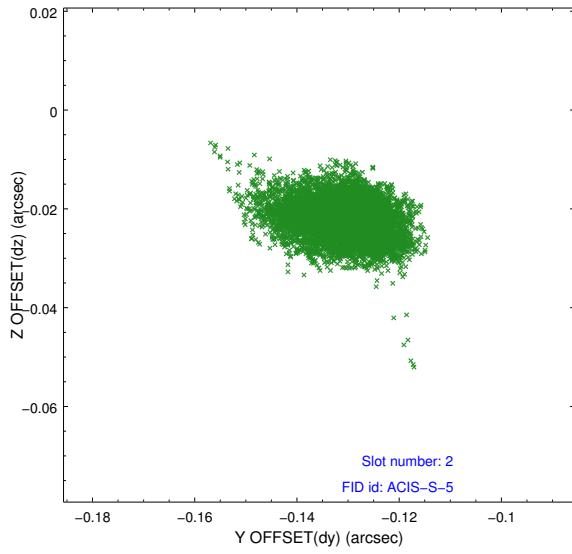
### 2.5.1 Slot 0



## 2.5.2 Slot 1



### 2.5.3 Slot 2



# A Summary

## A.1 Status

V&V Scientist	Beth Sundheim
V&V Date (YYYY-MM-DD)	2012.06.21
V&V Edition	1
V&V Disposition and Status	OK
V&V Charge Time	30.398398188114

## A.2 Comments