

V&V Reference Report

L2 ASCDS Version : 8.2.1

Observation 1246 - L2 Version 4
Chandra X-Ray Center

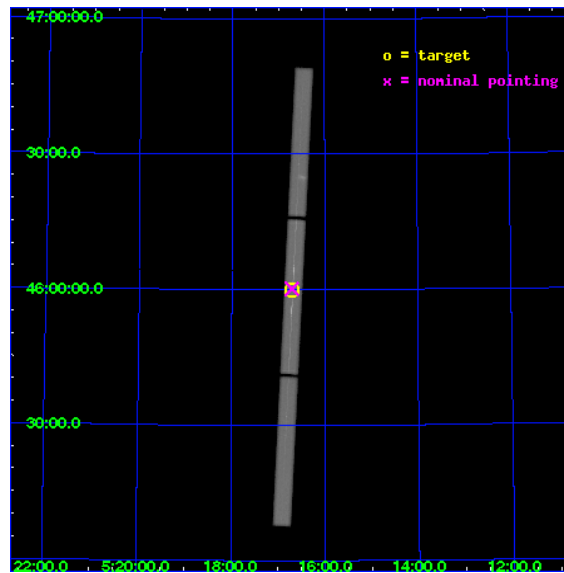
L2 Processing Date : Jan 13 2010

Contents

1	Front	2
2	OBI	3
2.1	OBI	3
2.1.1	Images	3
2.1.2	Parameters	4
2.1.3	Events	4
2.2	Compared Parameters	5
2.3	Aspect	6
2.4	Star Slots	9
2.4.1	Slot 3	9
2.4.2	Slot 4	10
2.4.3	Slot 5	11
2.4.4	Slot 6	12
2.4.5	Slot 7	13
2.5	FID Slots	14
2.5.1	Slot 0	14
2.5.2	Slot 1	15
2.5.3	Slot 2	16
3	Gratings	17
3.1	LETG Arm	17
A	Summary	19
A.1	Status	19
A.2	Comments	19

1 Front

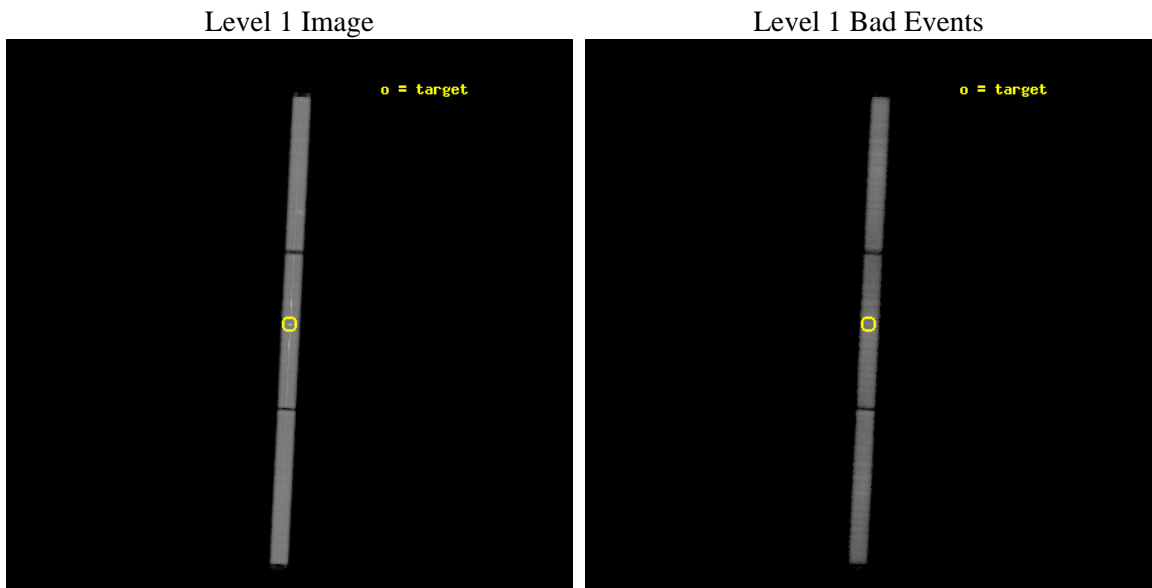
seq_num	280196	Sequence number
obs_id	1246	Observation id
title	 	Proposal title
observer	Dr. CXC Calibration	Principal investigator
object	CAPELLA	Source name
ra_targ	79.17625	Observer's specified target RA
dec_targ	45.997889	Observer's specified target Dec
ra_nom	79.176795103102	Nominal RA
dec_nom	46.003358963024	Nominal Dec
roll_nom	92.772260239476	Nominal Roll
revision	4	Processing version of data
ontime	14724.381778538	[s]
livetime	14601.783567791	Ontime multiplied by DTCOR
l2events	858379	Number of level 2 events



2 OBI

2.1 OBI

2.1.1 Images



2.1.2 Parameters

obi_num	1	Obi number	sched_exp_time	15000.000000	Scheduled observation exposure time
ascdsver	8.2.1	Processing system revision	ontime	14724.381778538	[s]
caldbver	4.1.5	 	ll events	1349446	Number of level 1 events
date	2010-01-13T10:49:39	Date and time of file creation			
revision	4	Processing version of data			

2.1.3 Events

Level 1 Events

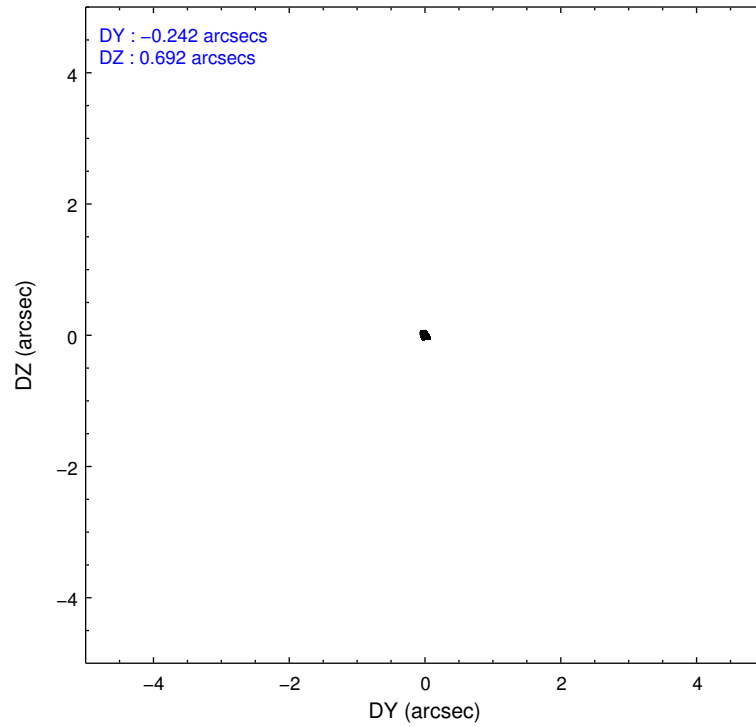
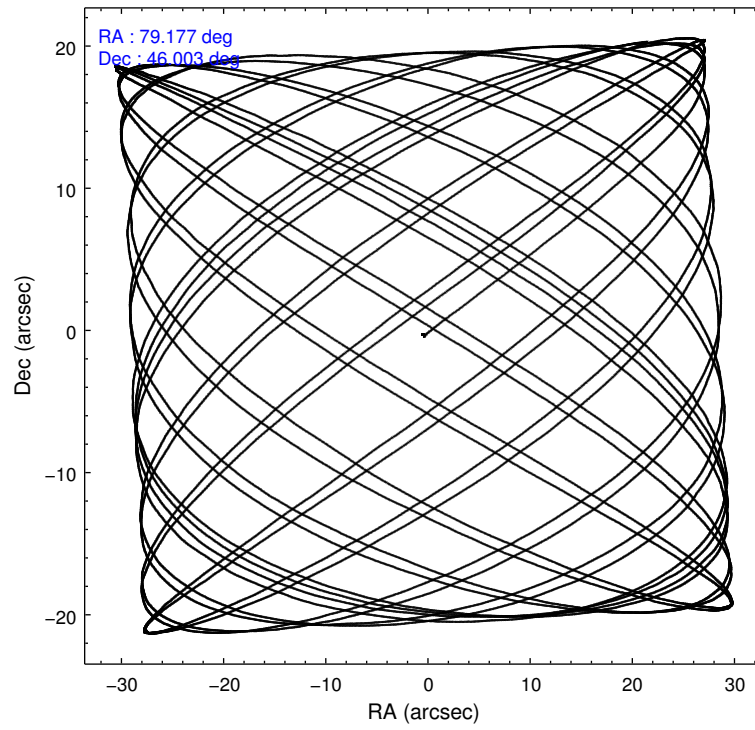
	segment 1	segment 2	segment 3
level 1 events	429216	482861	437369
rejected events	114864	121308	140017
rejected %	26%	25%	32%

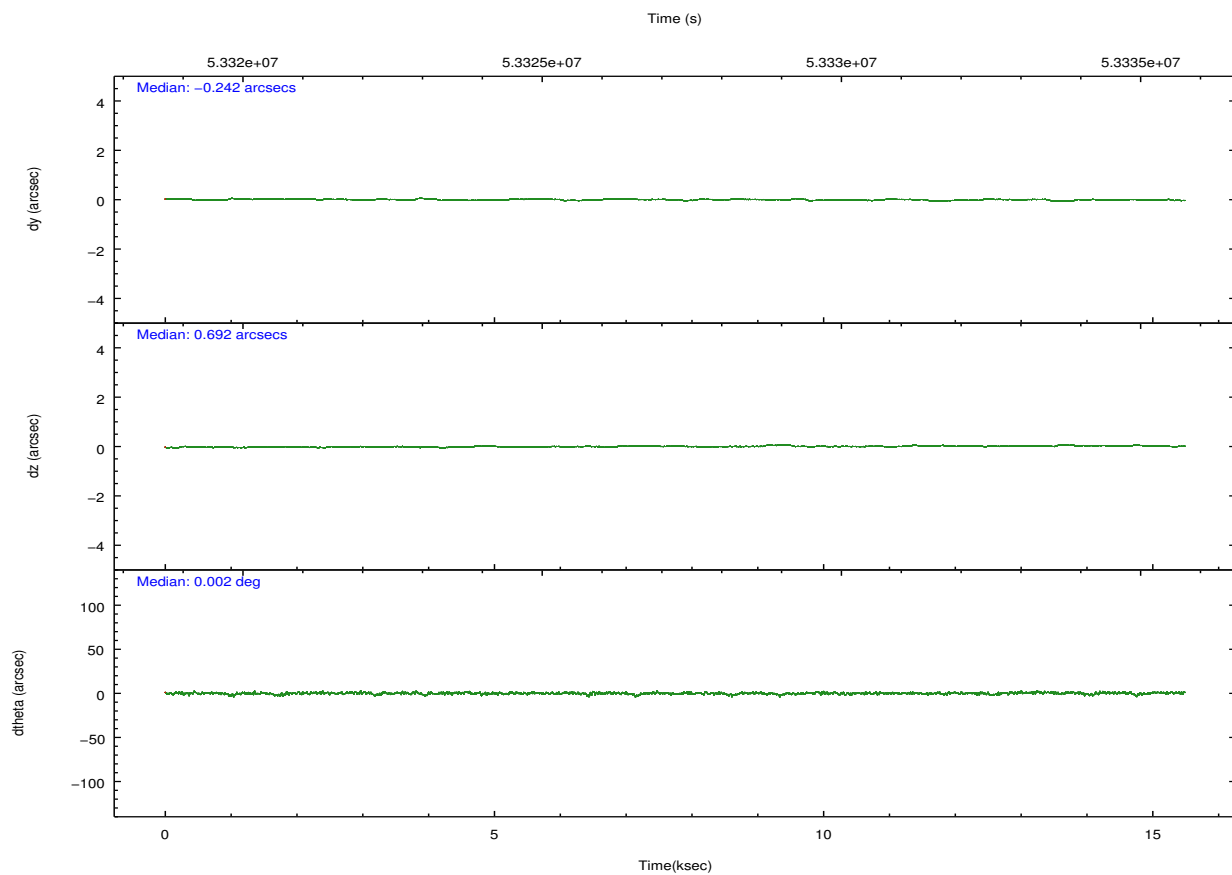
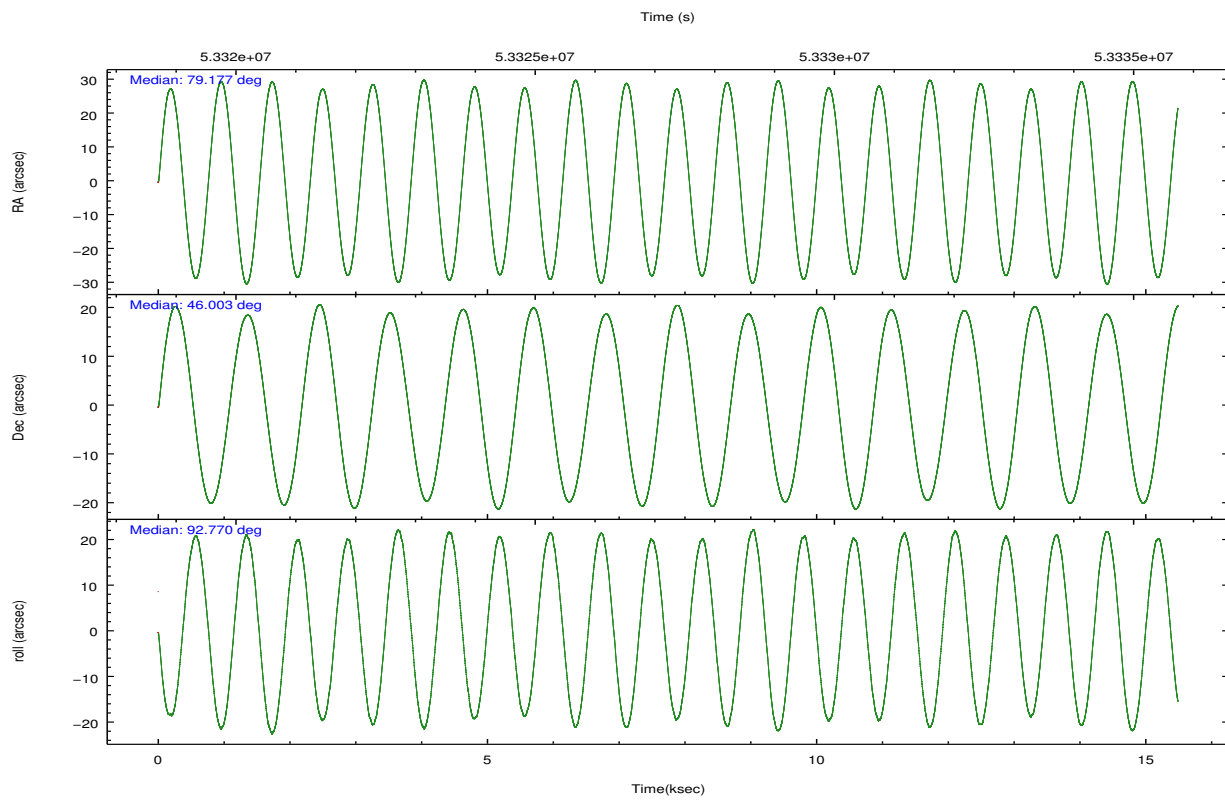
2.2 Compared Parameters

Parameter	Planned	Actual
Instrument	HRC	HRC
Detector	HRC-S	HRC-S
Grating	LETG	LETG
Data mode	OBSERVING	OBSERVING
Observation mode	POINTING	POINTING
Pointing RA	79.200078	79.17679510310163
Pointing Dec	45.979309	46.00335896302446
Pointing Roll	92.688180	92.77226023947635
SIM focus pos (mm)	-1.229586	-1.08446789718153
SIM defocus (mm)	0.3037507710433288	0.4488687422227668
SIM translation stage pos (mm)	250.455976	250.466033080201
SIM translation stage offset (mm)	0	-0.01005468664627074
Observation start time	53319964.184000	53319297.315623
Observation start date	1999-09-10T03:05:00	1999-09-10T02:54:57
Observation end time	53334964.184000	53336409.178737
Observation end date	1999-09-10T07:15:00	1999-09-10T07:40:09

Parameter	Planned	Actual
Obspar format version number	6	6
Obspar file type	PREDICTED	ACTUAL
Obspar update status	NONE	UPDATED

2.3 Aspect



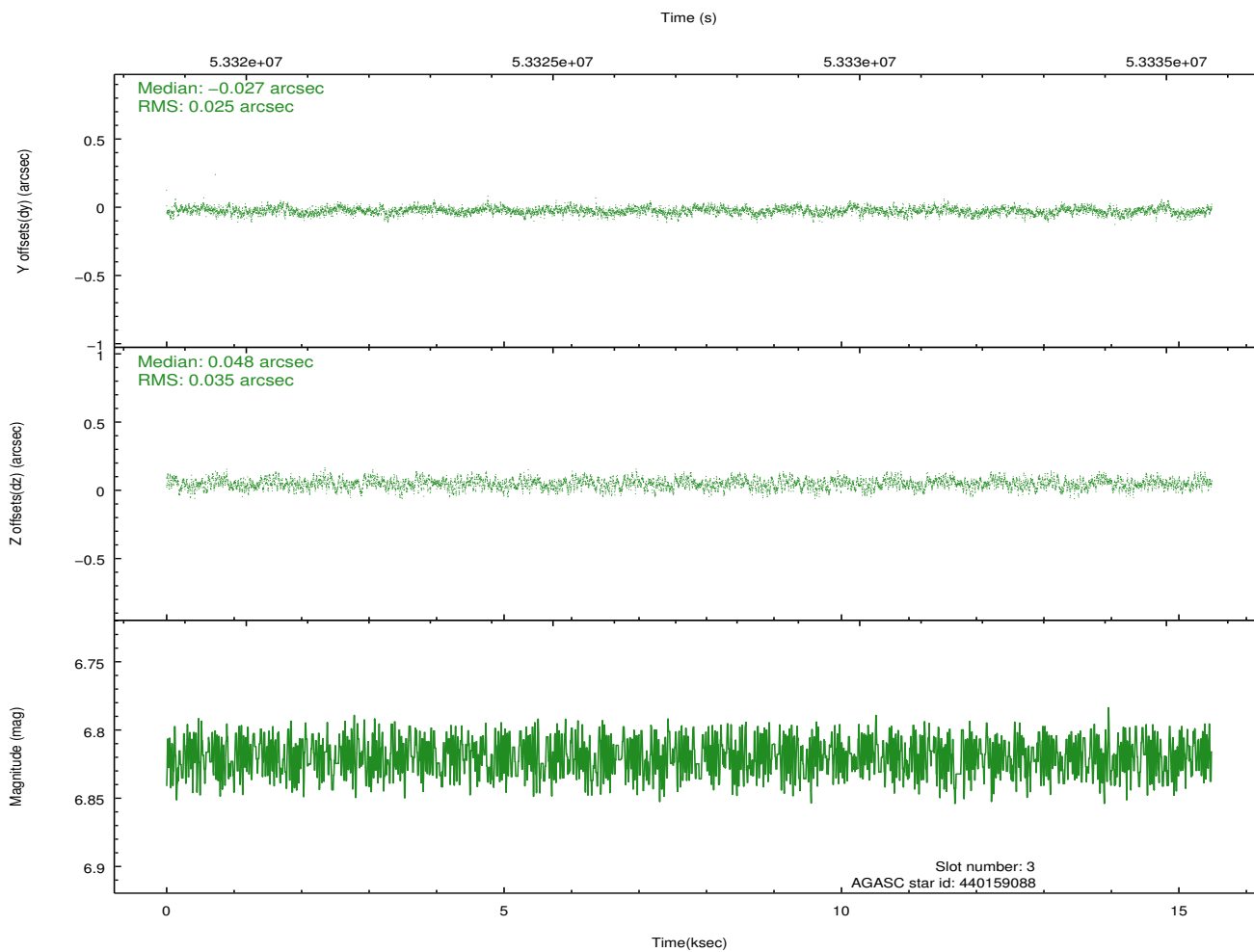
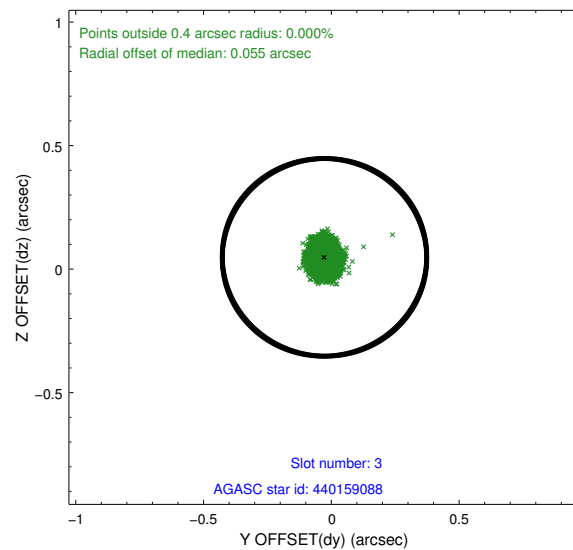
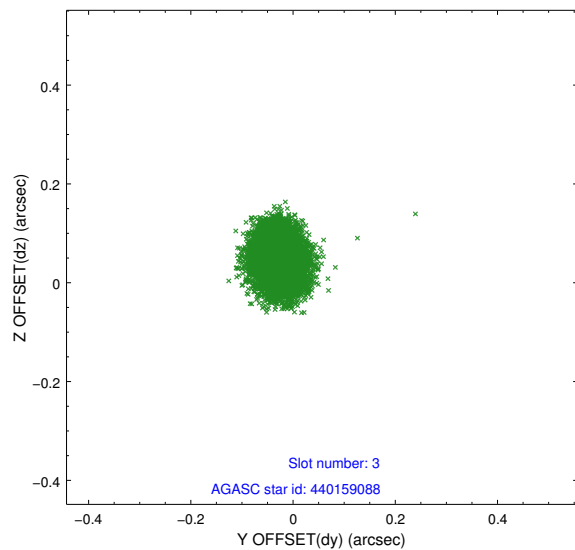


Slot Statistics

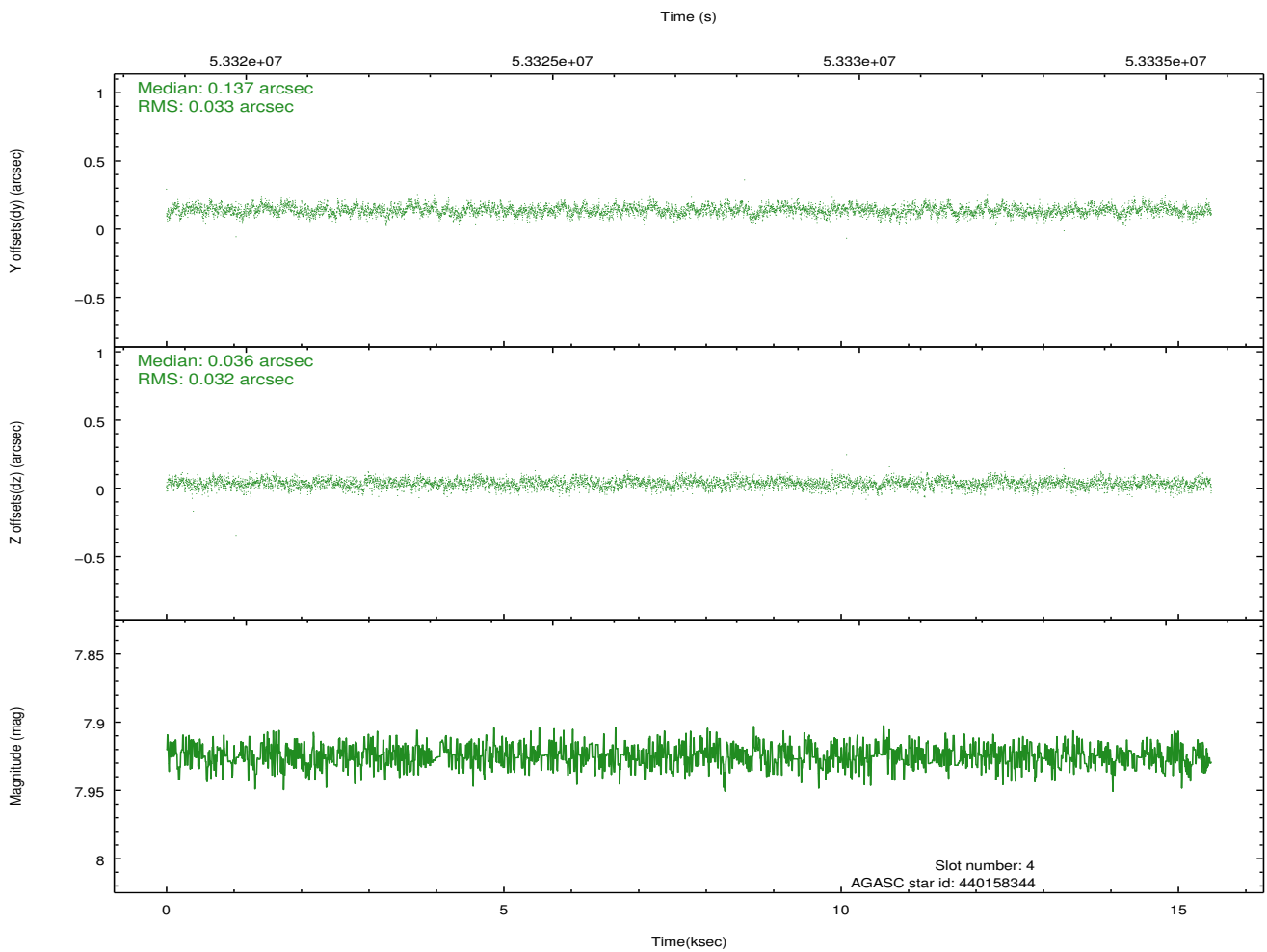
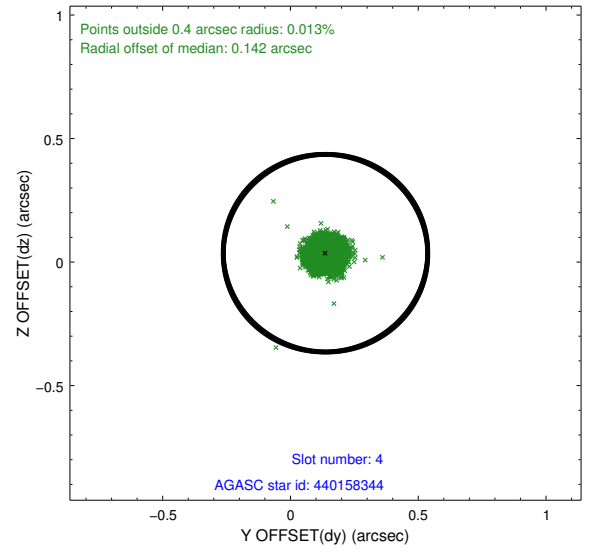
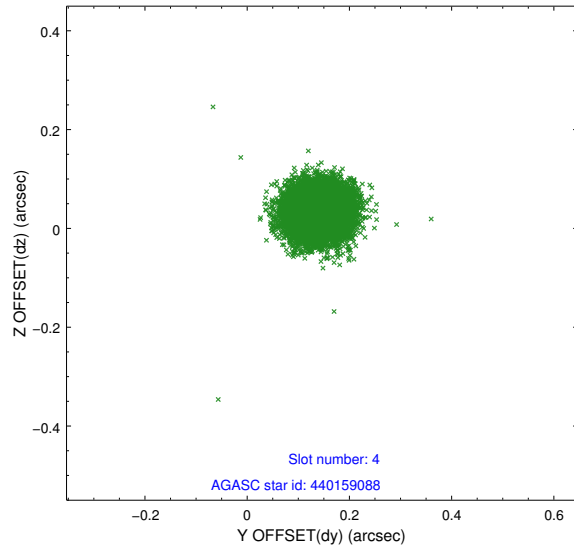
slot	status	id	mag	n_pts	med_dy	med_dz	dr1	dr2	ra	dec	mean_y	mean_z
0	FID	HRC-S-1	6.96	7557	0.136	-0.082	0.008	0.023	0.000000	0.000000	-1153.82	-448.90
1	FID	HRC-S-3	6.98	7555	0.114	-0.112	0.009	0.032	0.000000	0.000000	-1156.61	580.57
2	FID	HRC-S-4	6.94	7557	0.137	-0.103	0.005	0.014	0.000000	0.000000	1244.47	583.03
3	GUIDE	440159088	6.82	7556	-0.027	0.048	0.046	0.075	79.453034	46.128063	506.61	-654.86
4	GUIDE	440158344	7.92	7557	0.137	0.036	0.049	0.077	79.344888	45.394991	-2117.55	-266.51
5	GUIDE	440149808	8.55	7554	-0.052	-0.079	0.059	0.097	78.873930	46.405955	1573.80	737.23
6	GUIDE	438438936	8.97	7555	-0.144	-0.096	0.080	0.128	78.241026	46.550197	2178.96	2275.55
7	GUIDE	440145944	9.09	7553	0.088	0.093	0.081	0.127	80.083717	45.428844	-2071.20	-2136.74

2.4 Star Slots

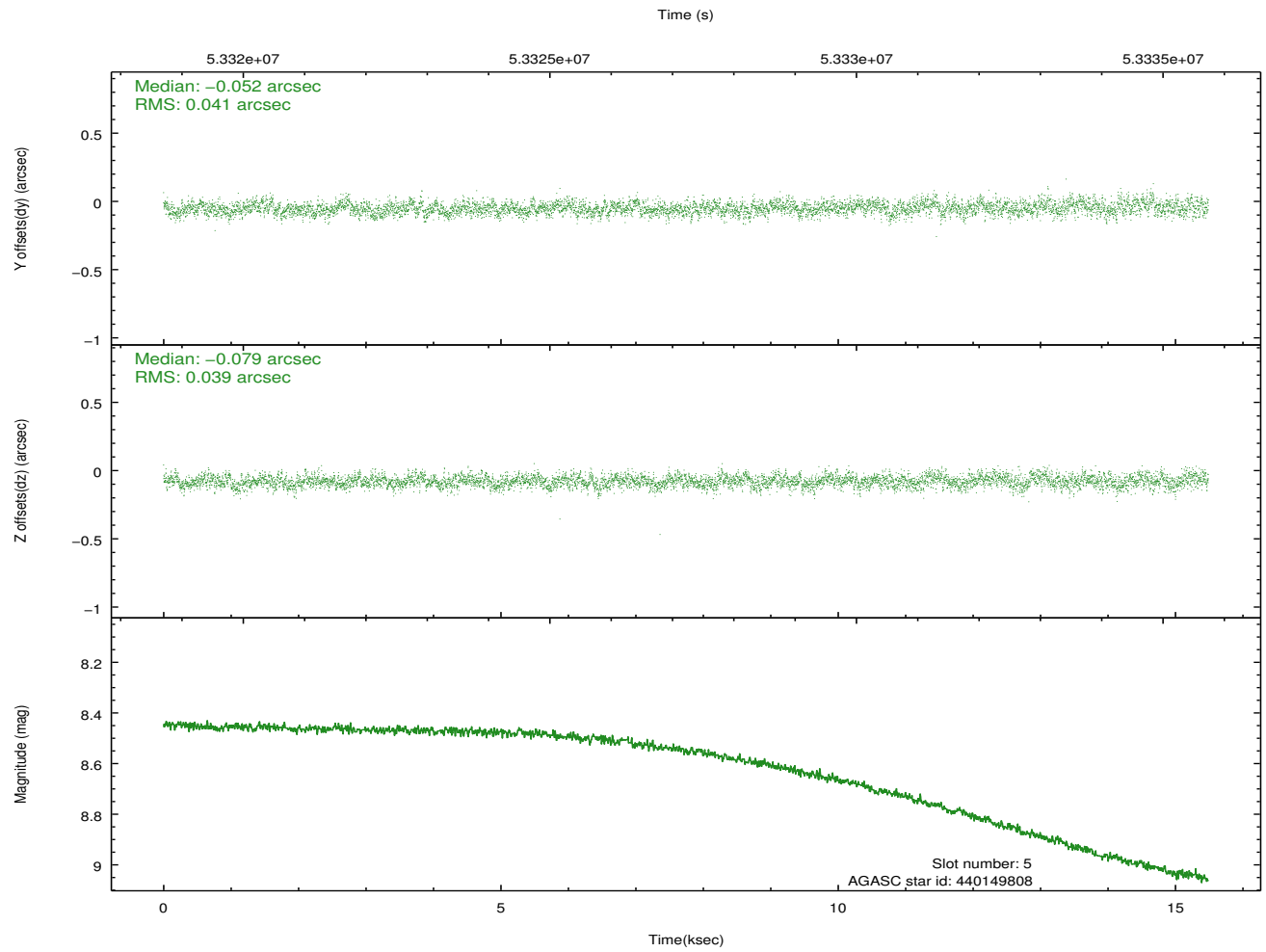
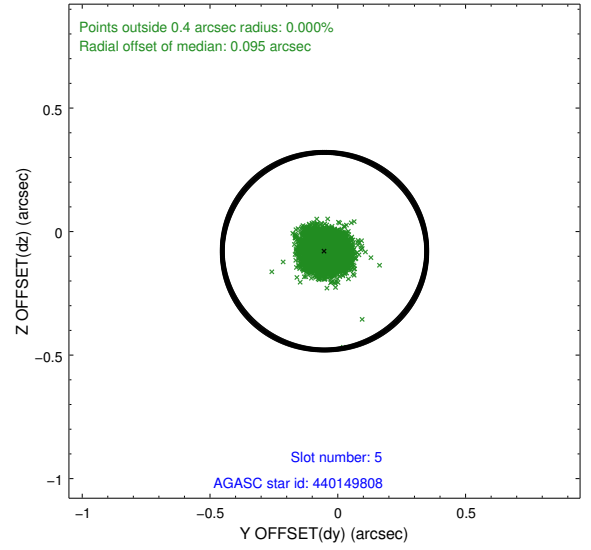
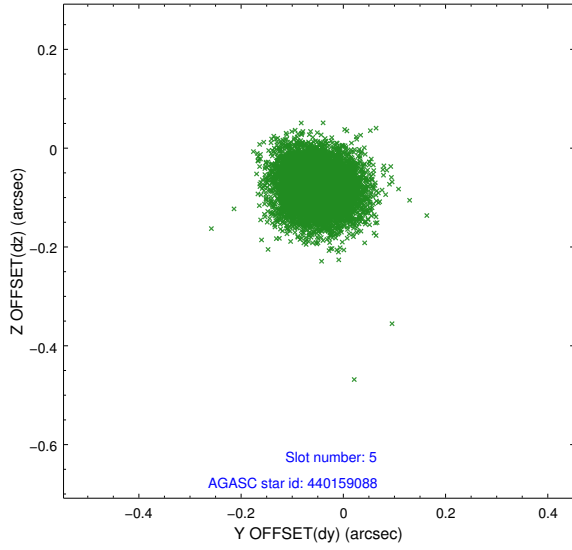
2.4.1 Slot 3



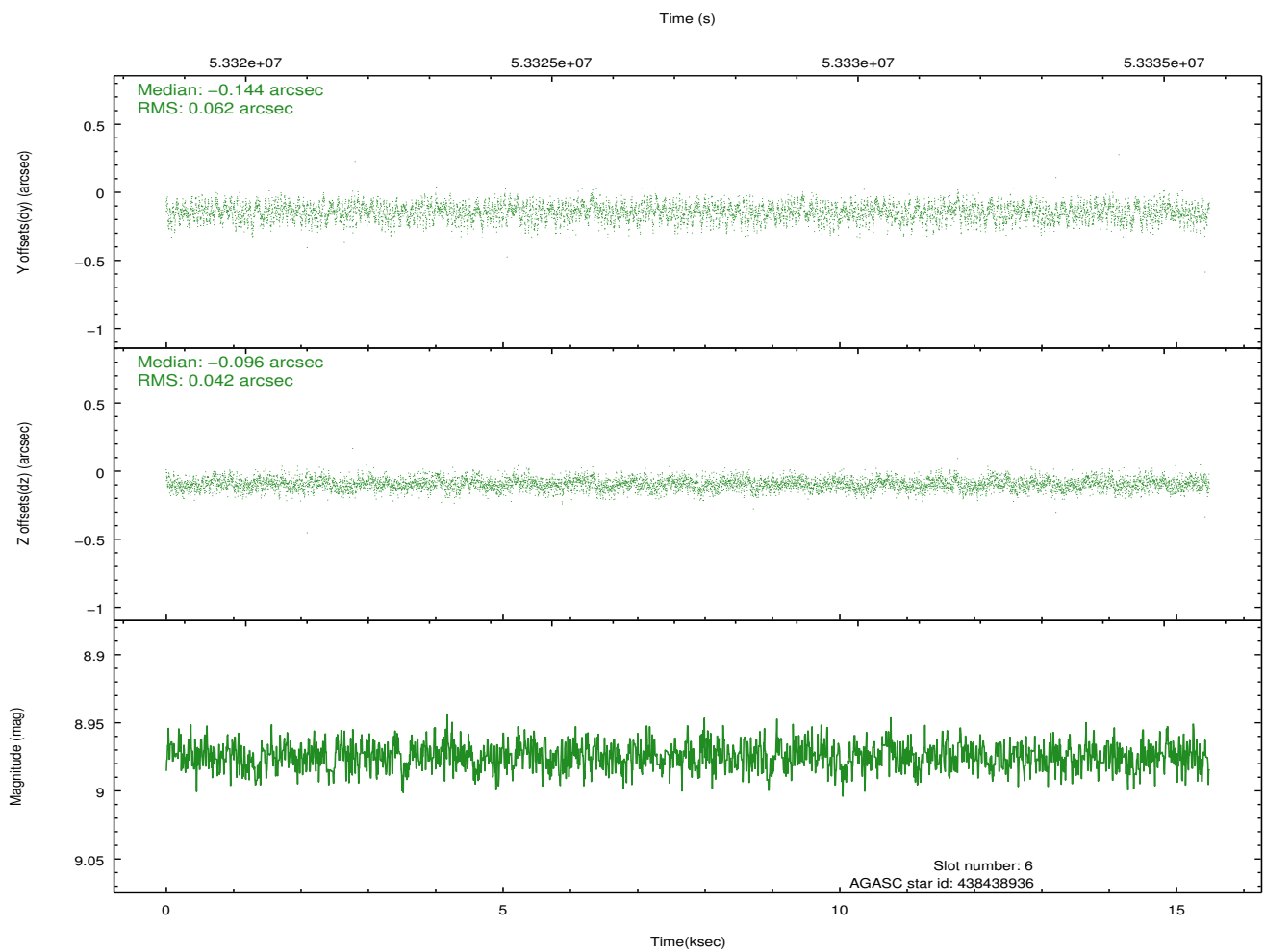
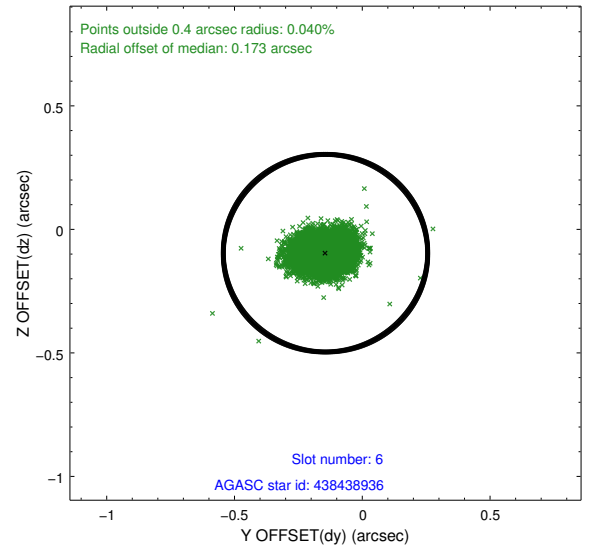
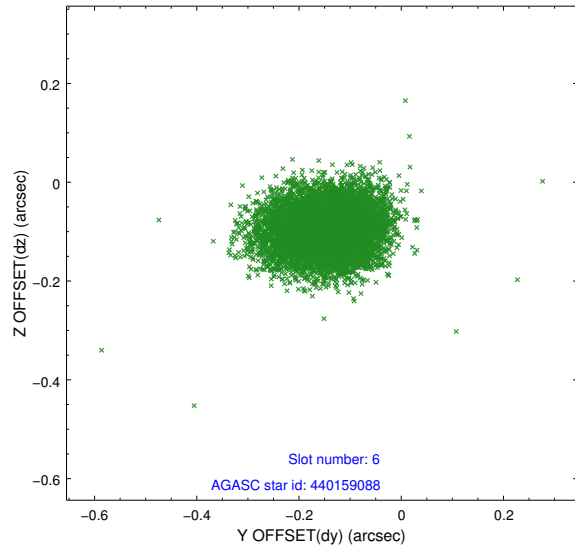
2.4.2 Slot 4



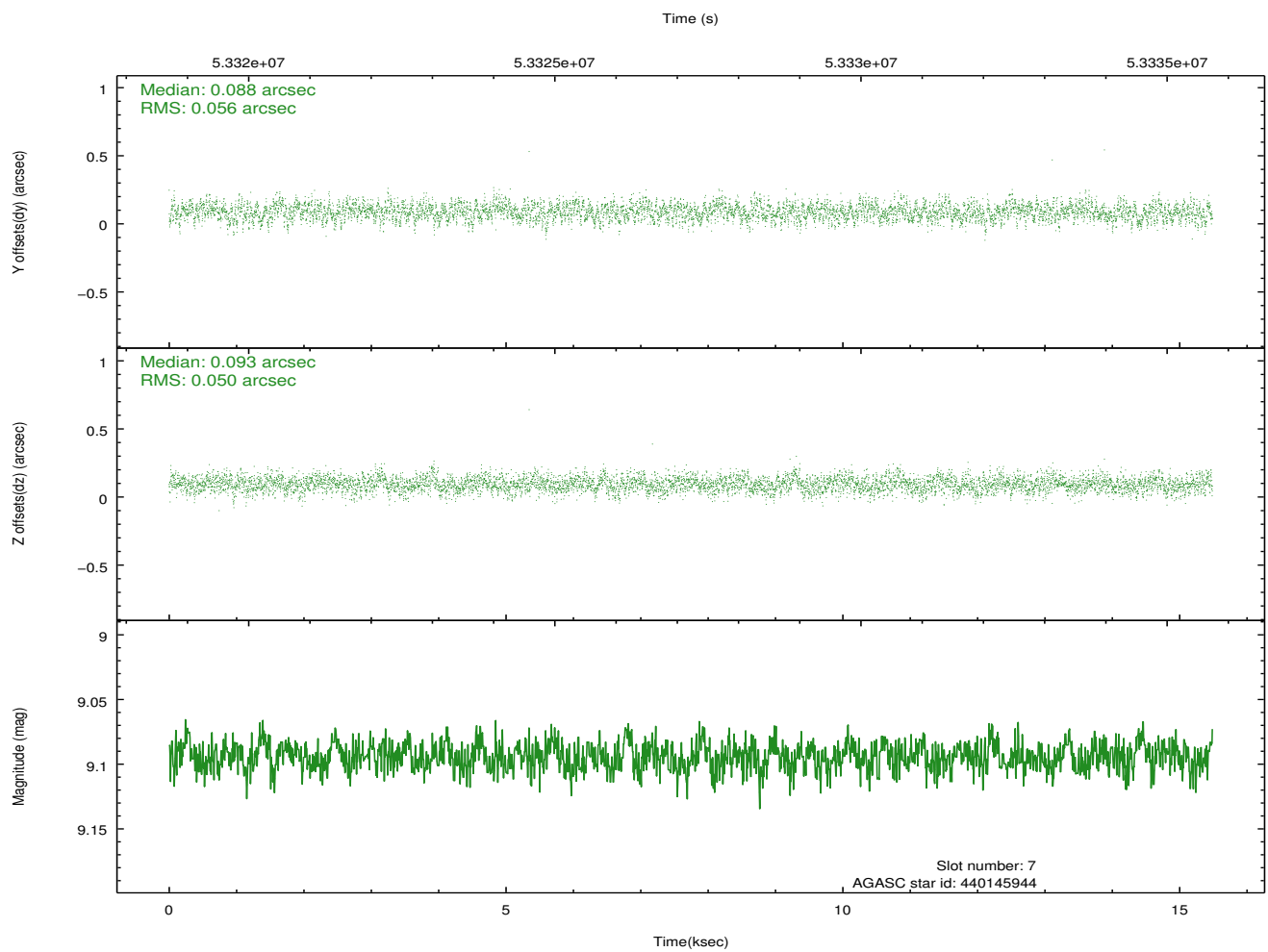
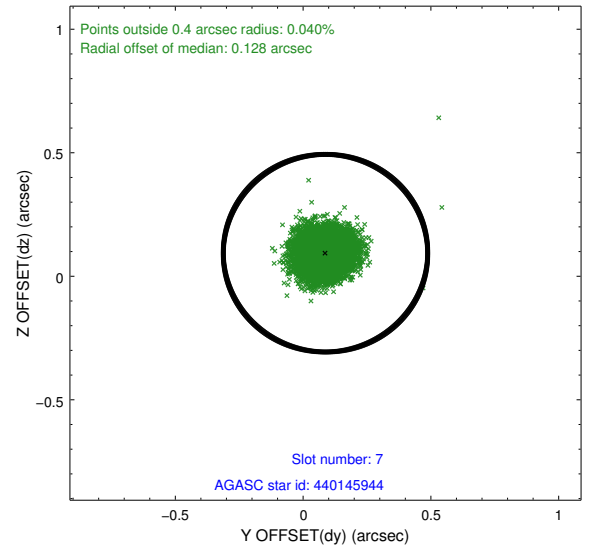
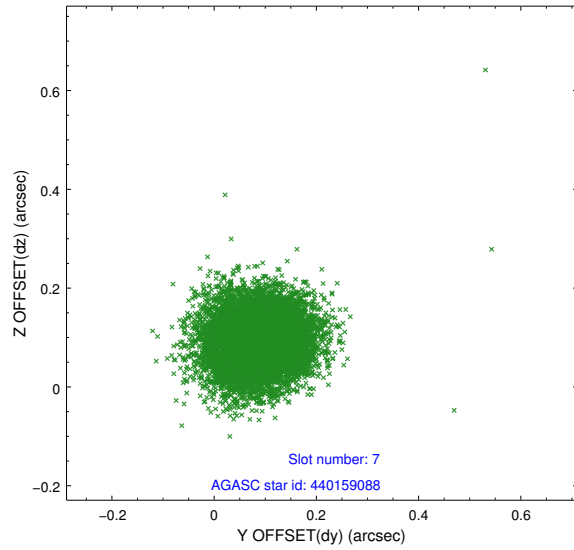
2.4.3 Slot 5



2.4.4 Slot 6

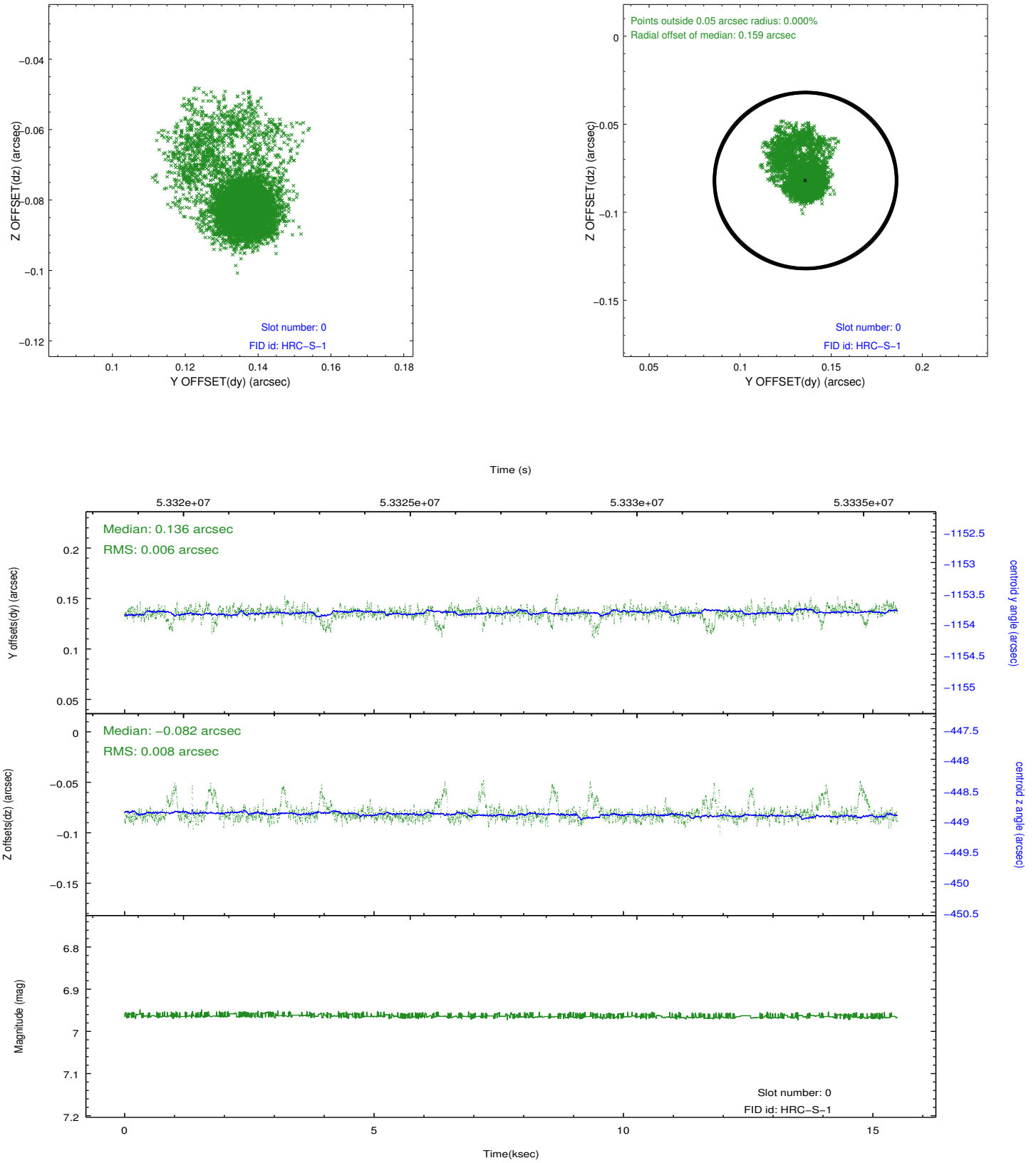


2.4.5 Slot 7

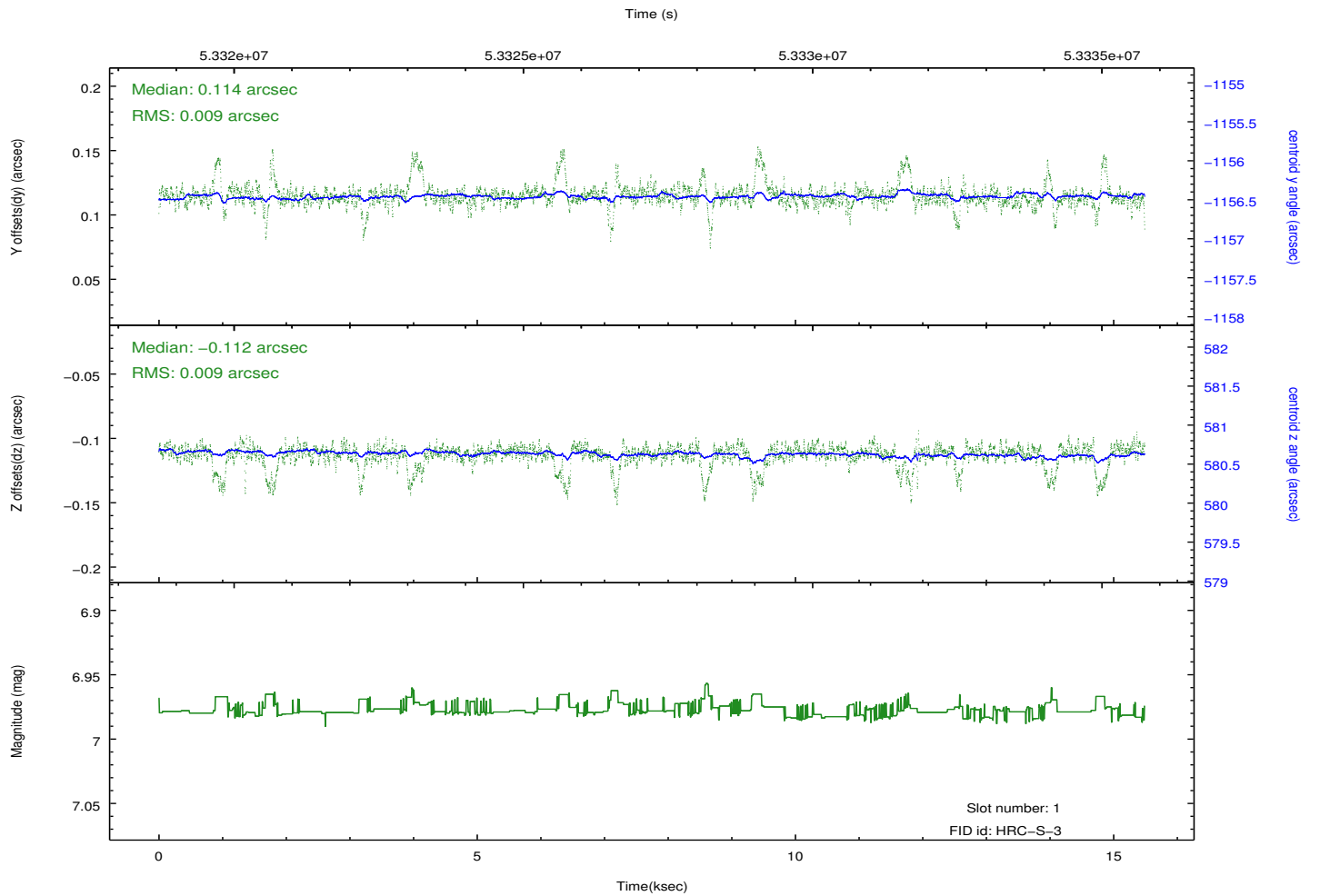
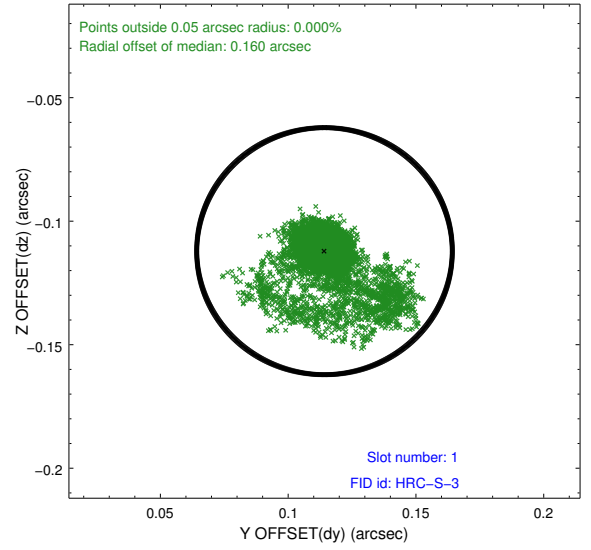
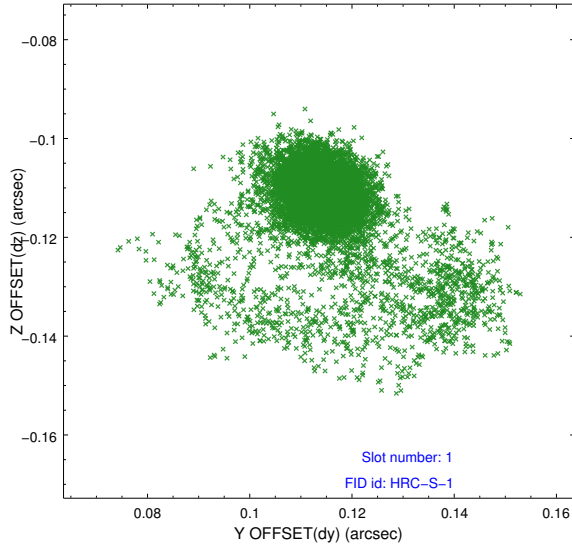


2.5 FID Slots

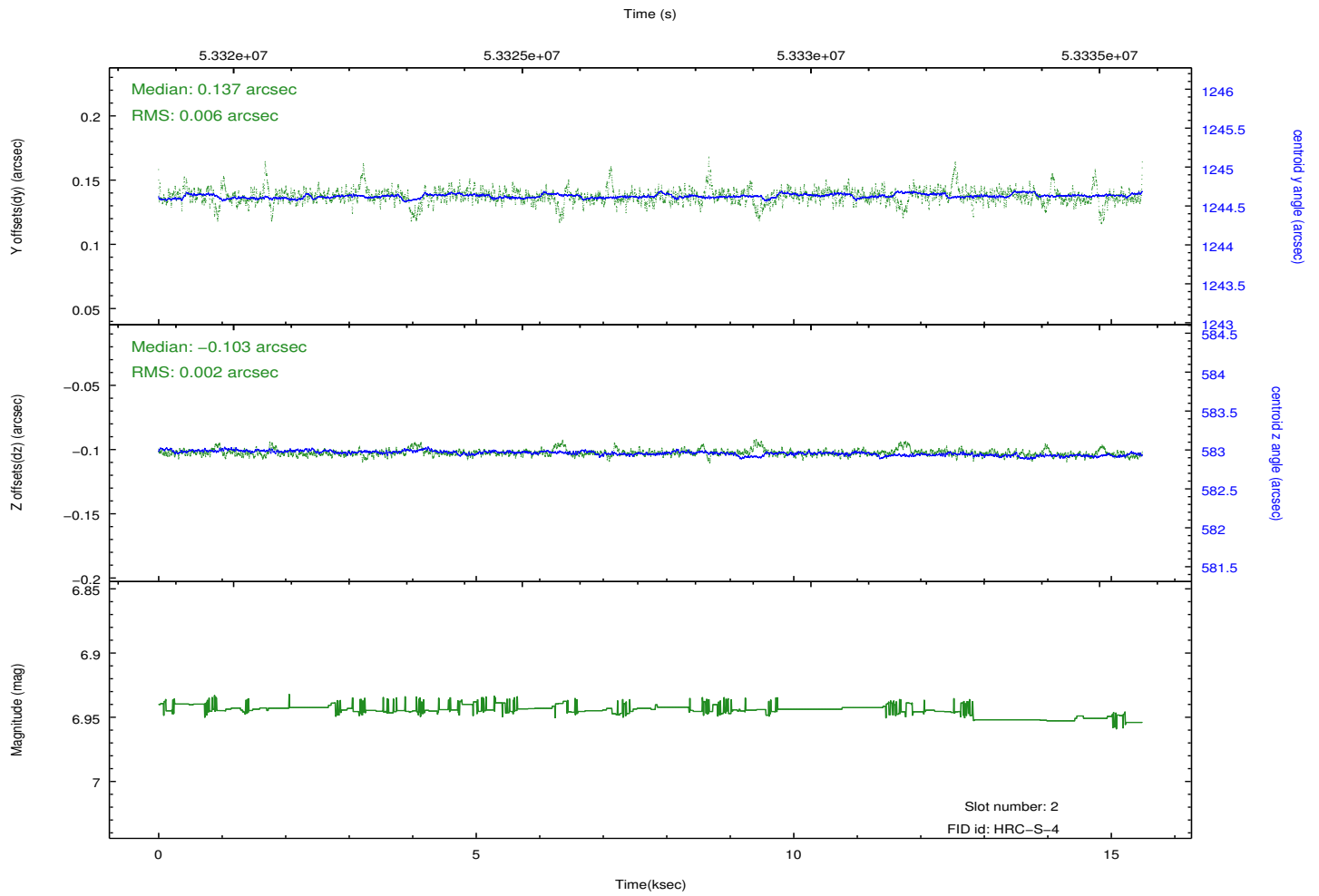
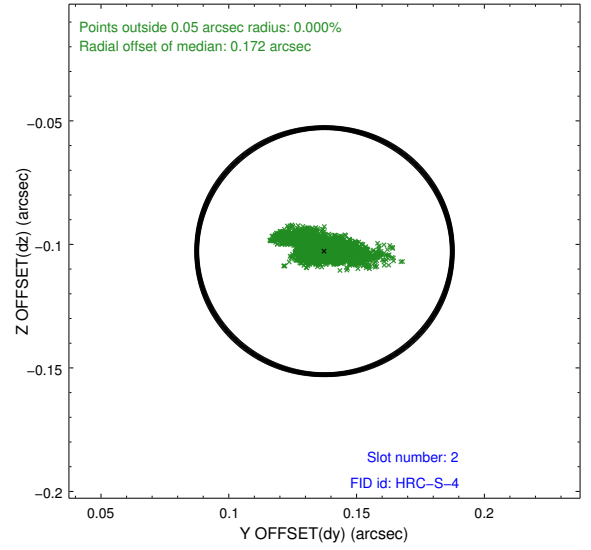
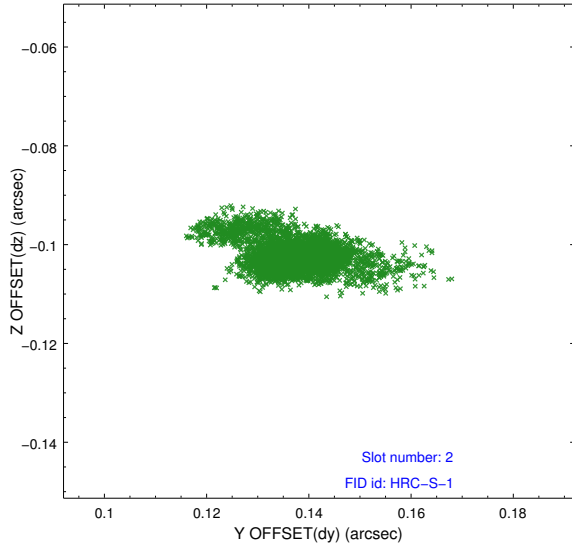
2.5.1 Slot 0



2.5.2 Slot 1

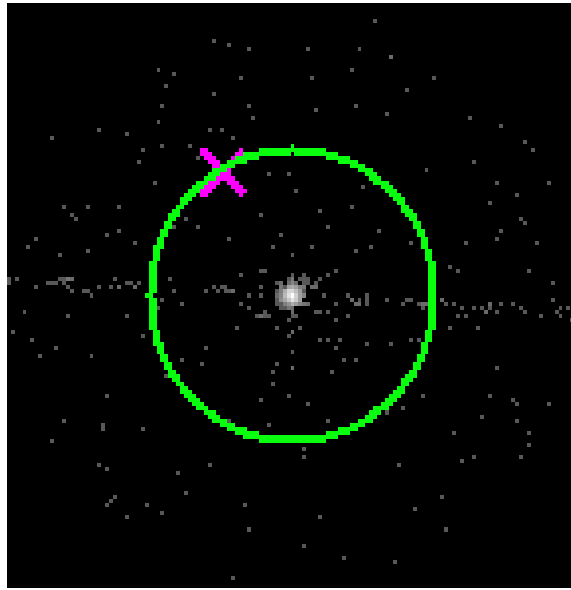


2.5.3 Slot 2

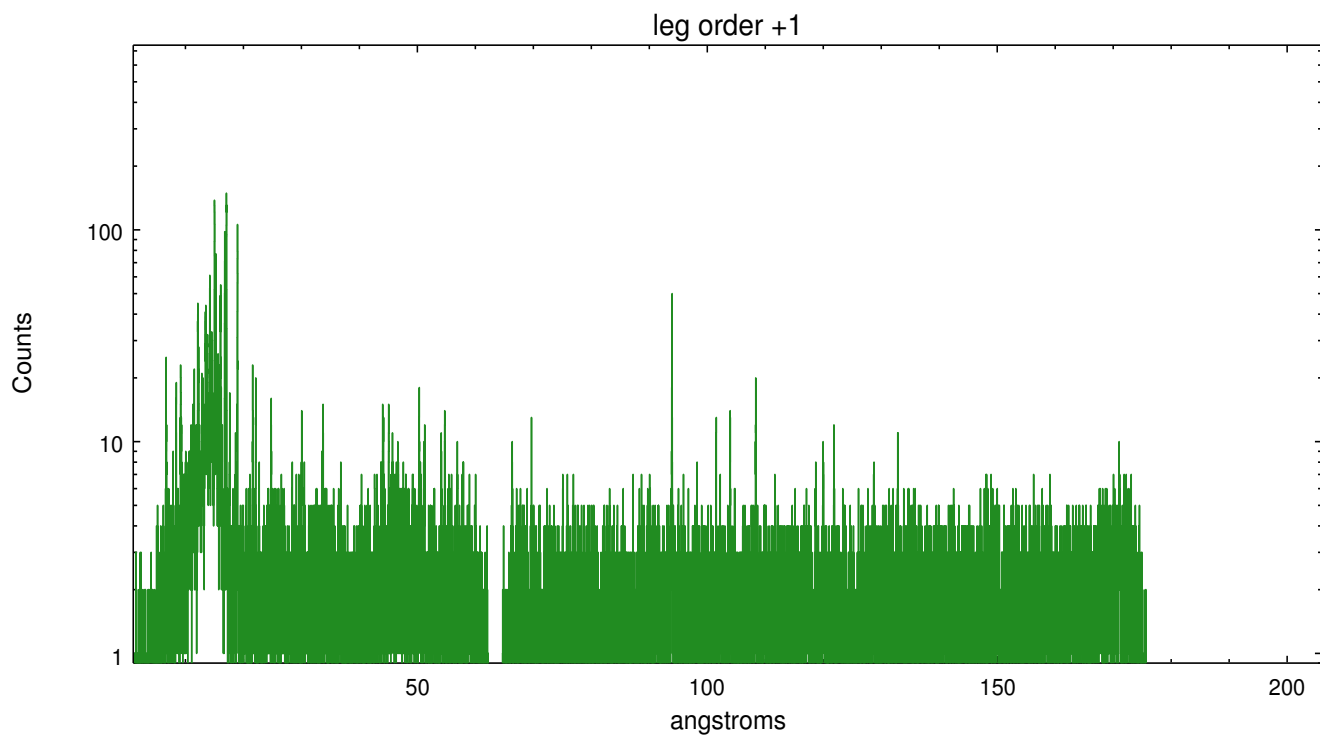
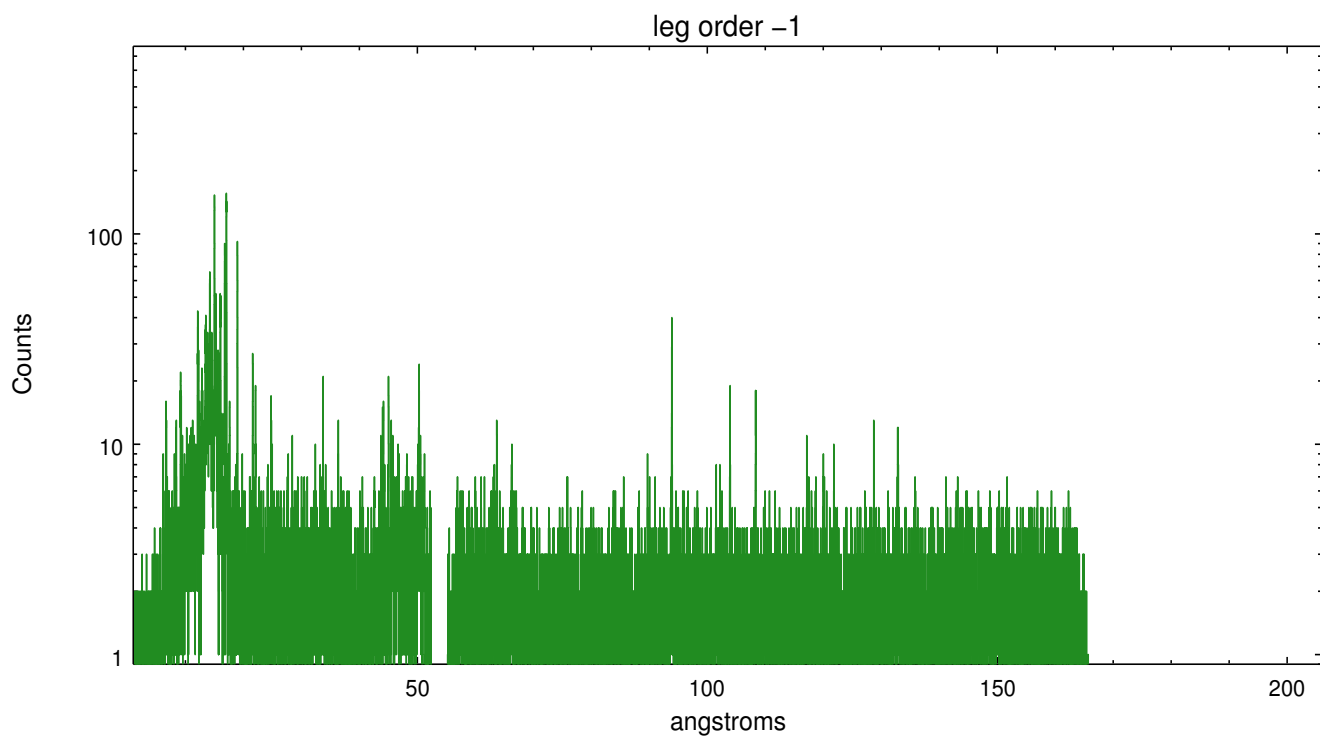


3 Gratings

3.1 LETG Arm



LETG Zero Order



A Summary

A.1 Status

V&V Scientist	Joy Nichols
V&V Date (YYYY-MM-DD)	2010.04.23
V&V Edition	1
V&V Disposition and Status	OK
V&V Charge Time	14.718

A.2 Comments