

V&V Reference Report

L2 ASCDS Version : 8.4.5

Observation 12866 - L2 Version 2
Chandra X-Ray Center

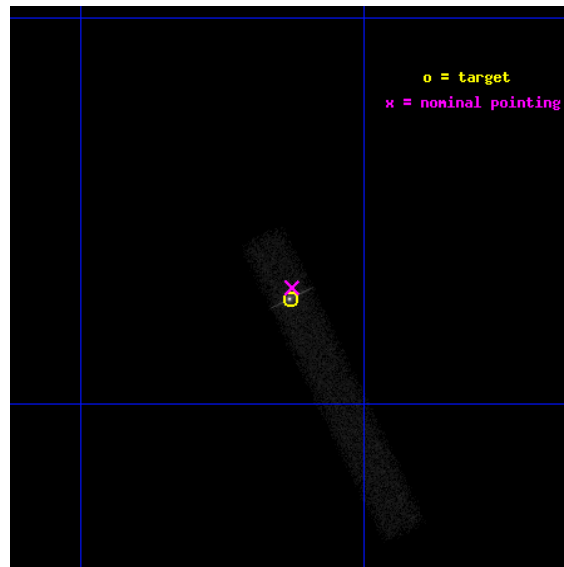
L2 Processing Date : Jul 4 2012

Contents

1	Front	2
2	OBI	3
2.1	OBI	3
2.1.1	Images	3
2.1.2	Bias	3
2.1.3	Parameters	4
2.1.4	Events	4
2.2	Compared Parameters	5
2.3	Aspect	6
2.4	Star Slots	9
2.4.1	Slot 3	9
2.4.2	Slot 4	10
2.4.3	Slot 5	11
2.4.4	Slot 6	12
2.4.5	Slot 7	13
2.5	FID Slots	14
2.5.1	Slot 0	14
2.5.2	Slot 1	15
2.5.3	Slot 2	16
A	Summary	17
A.1	Status	17
A.2	Comments	17

1 Front

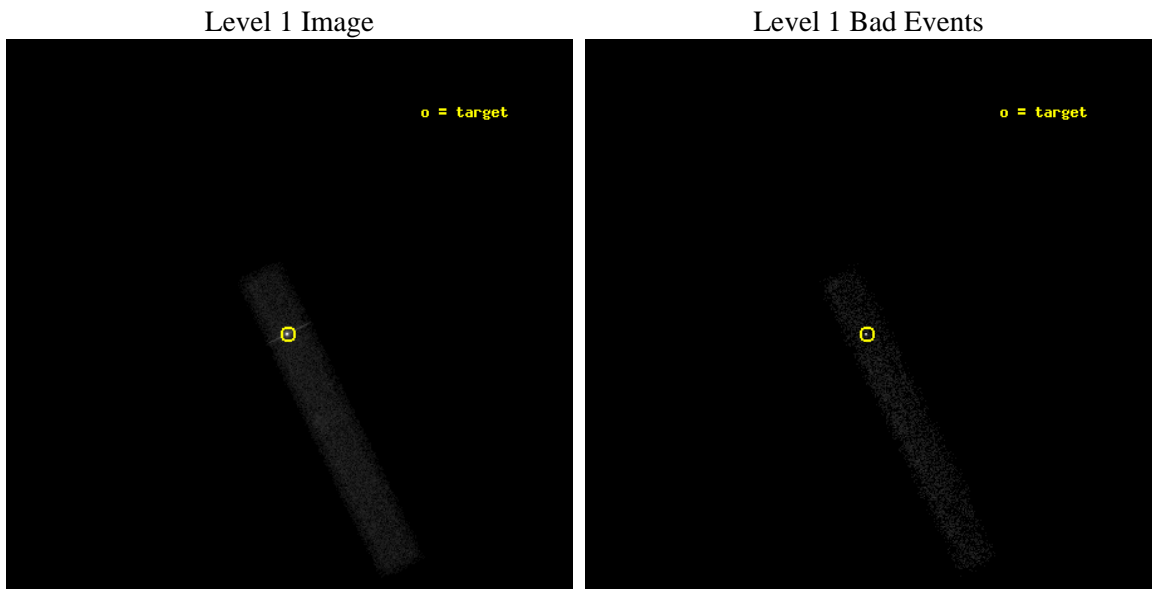
seq_num	702499	Sequence number
obs_id	12866	Observation id
title	Chandra Survey of Hard X-ray Selected Merging AGN Hosts	Proposal t
observer	Dr. Richard Mushotzky	Principal investigator
object	NGC 985	Source name
dtcycle	0	
cycle	P	events from which exps? Prim/Second/Both
ra_targ	38.657083	Observer's specified target RA [deg]
dec_targ	-8.788	Observer's specified target Dec [deg]
ra_nom	38.656622070326	Nominal RA [deg]
dec_nom	-8.783170603894	Nominal Dec [deg]
roll_nom	63.848776281545	Nominal Roll [deg]
revision	2	Processing version of data
ontime	25009.91572392	Sum of GTIs [s]
livetime	22682.673430002	Livetime [s]
ontime7	25009.91572392	Sum of GTIs [s]
l2events	53153	Number of level 2 events



2 OBI

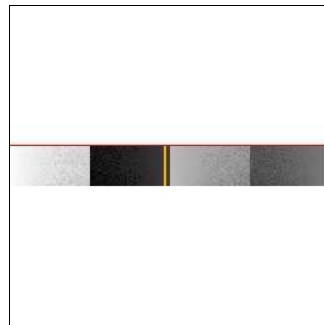
2.1 OBI

2.1.1 Images



2.1.2 Bias

Chip 7



2.1.3 Parameters

obi_num	0	Obi number	sched_exp_time	25000.000000	[s] Scheduled observation exposure time
ascdsver	8.4.5	Processing system revision	ontime	25009.91572392	Sum of GTIs [s]
caldbver	4.5.0	 	ontime7	25009.91572392	Sum of GTIs [s]
date	2012-07-04T16:10:09	Date and time of file creation	l1events	76151	Number of level 1 events
revision	2	Processing version of data			

2.1.4 Events

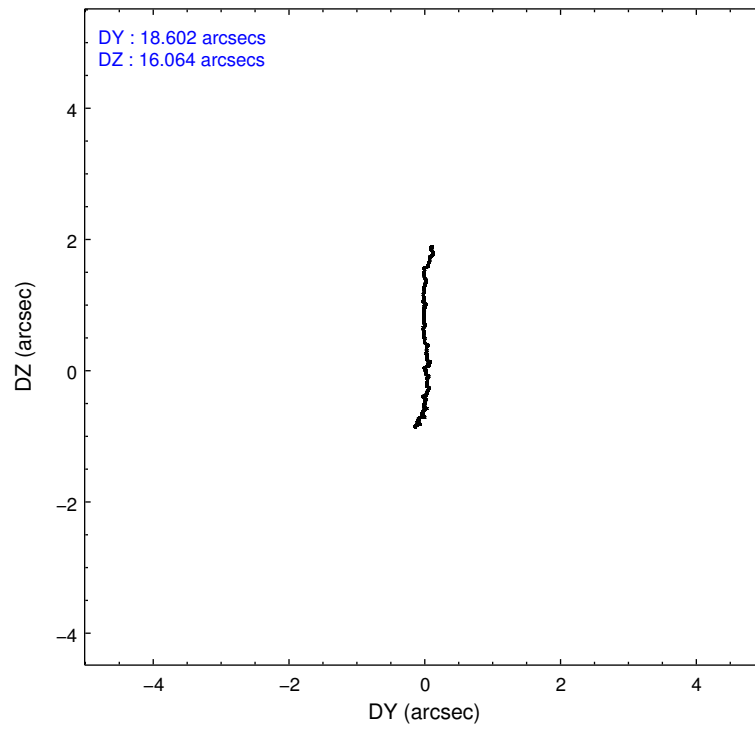
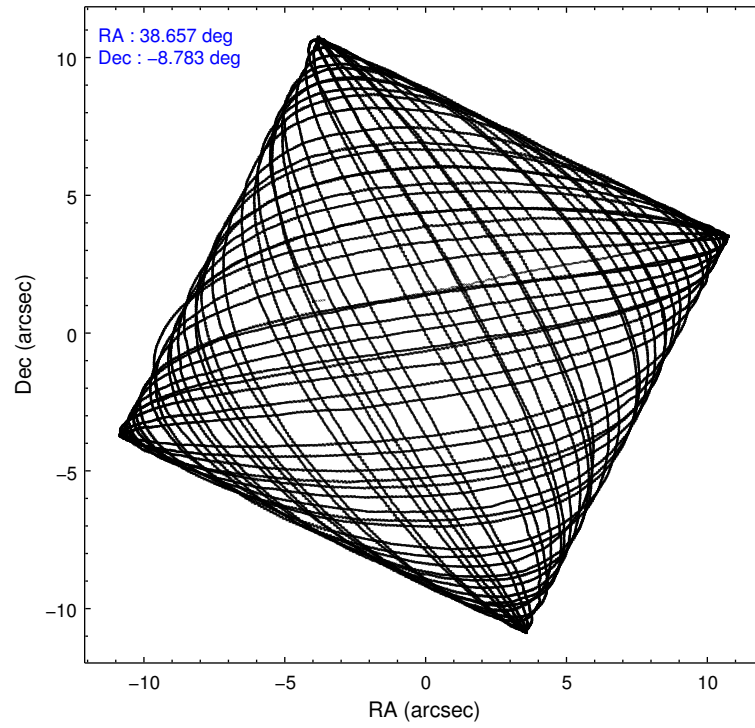
	ccd 7
level 1 events	76151
rejected events	22291
rejected %	29%

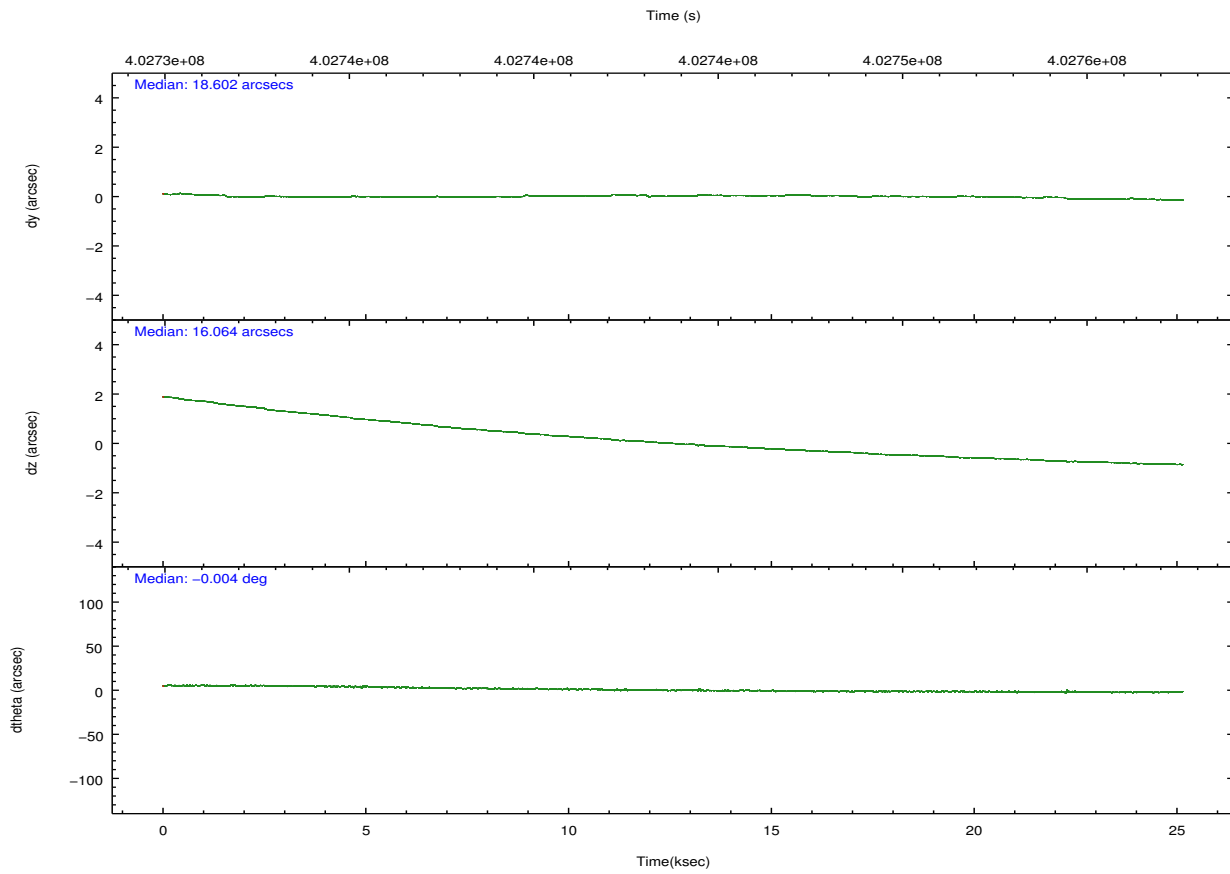
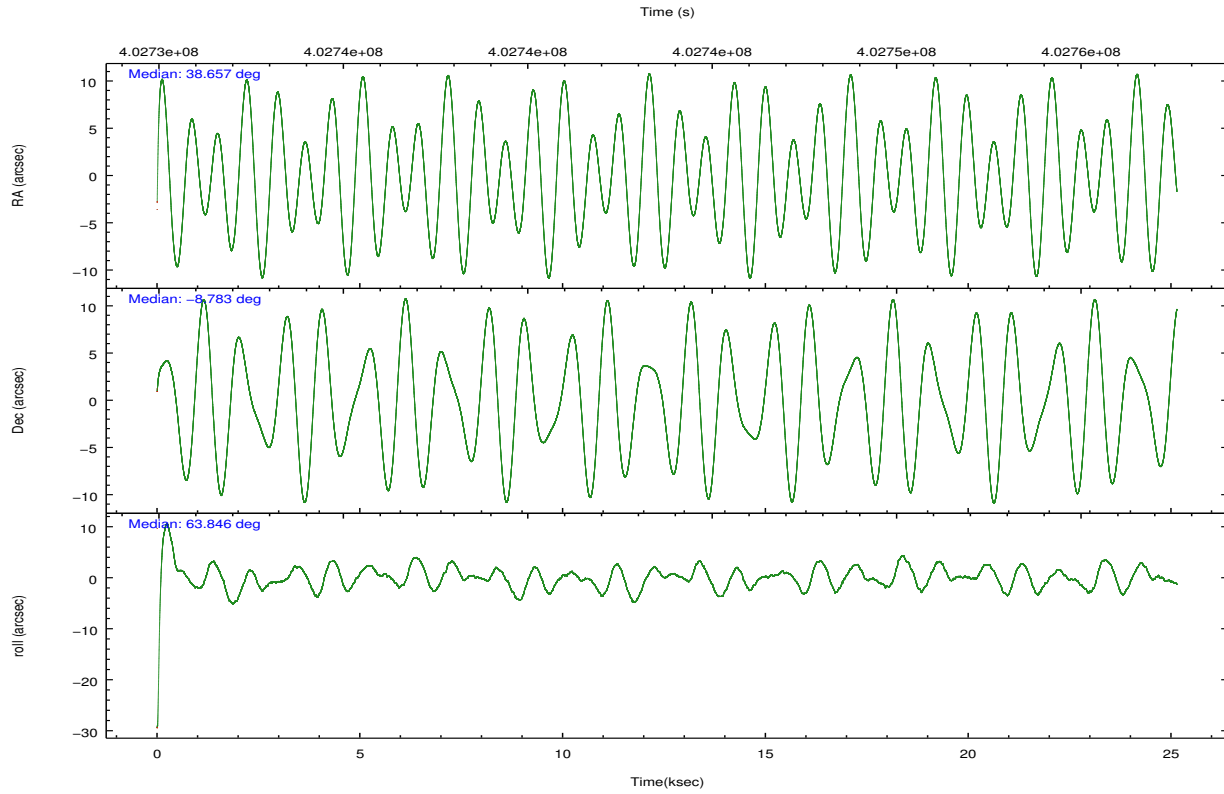
	ccd 7
grade 0 events	11781
	15%
grade 1 events	770
	1%
grade 2 events	12264
	16%
grade 3 events	6221
	8%
grade 4 events	6089
	7%
grade 5 events	6154
	8%
grade 6 events	17509
	22%
grade 7 events	15363
	20%

2.2 Compared Parameters

Parameter	Planned	Actual	Parameter	Planned	Actual
Instrument	ACIS	ACIS	Obspar format version number	7	7
Detector	ACIS-7	ACIS-7	Obspar file type	PREDICTED	ACTUAL
Grating	NONE	NONE	Obspar update status	NONE	UPDATED
Data mode	FAINT	FAINT	Number of optional ACIS chips dropped	0	0
Observation mode	POINTING	POINTING	On-chip summing requested	N	N
[deg] Pointing RA	38.658848	38.65662207032594	Subarray requested	CUSTOM	1/8
[deg] Pointing Dec	-8.810431	-8.783170603893986	Subarray start row	449	449
[deg] Pointing Roll	63.692505	63.84877628154485	Subarray row count	128	128
[mm] SIM focus pos	-0.684267	-0.6828225247311905	Alternating exposures requested	N	N
[mm] SIM defocus	0	0.001444936568705701	[s] Primary exposure time	0.000000	0.4
[mm] SIM translation stage pos	-190.132523	-190.1400660498719			
[mm] SIM translation stage offset	0	0.00754346686406393			
[s] Observation start time (MET)	402731346.184000	402730340.92382			
Observation start date	2010-10-06T05:48:00	2010-10-06T05:32:20			
[s] Observation end time (MET)	402756346.184000	402757028.3377			
Observation end date	2010-10-06T12:44:40	2010-10-06T12:57:08			
Read mode	TIMED	TIMED			

2.3 Aspect



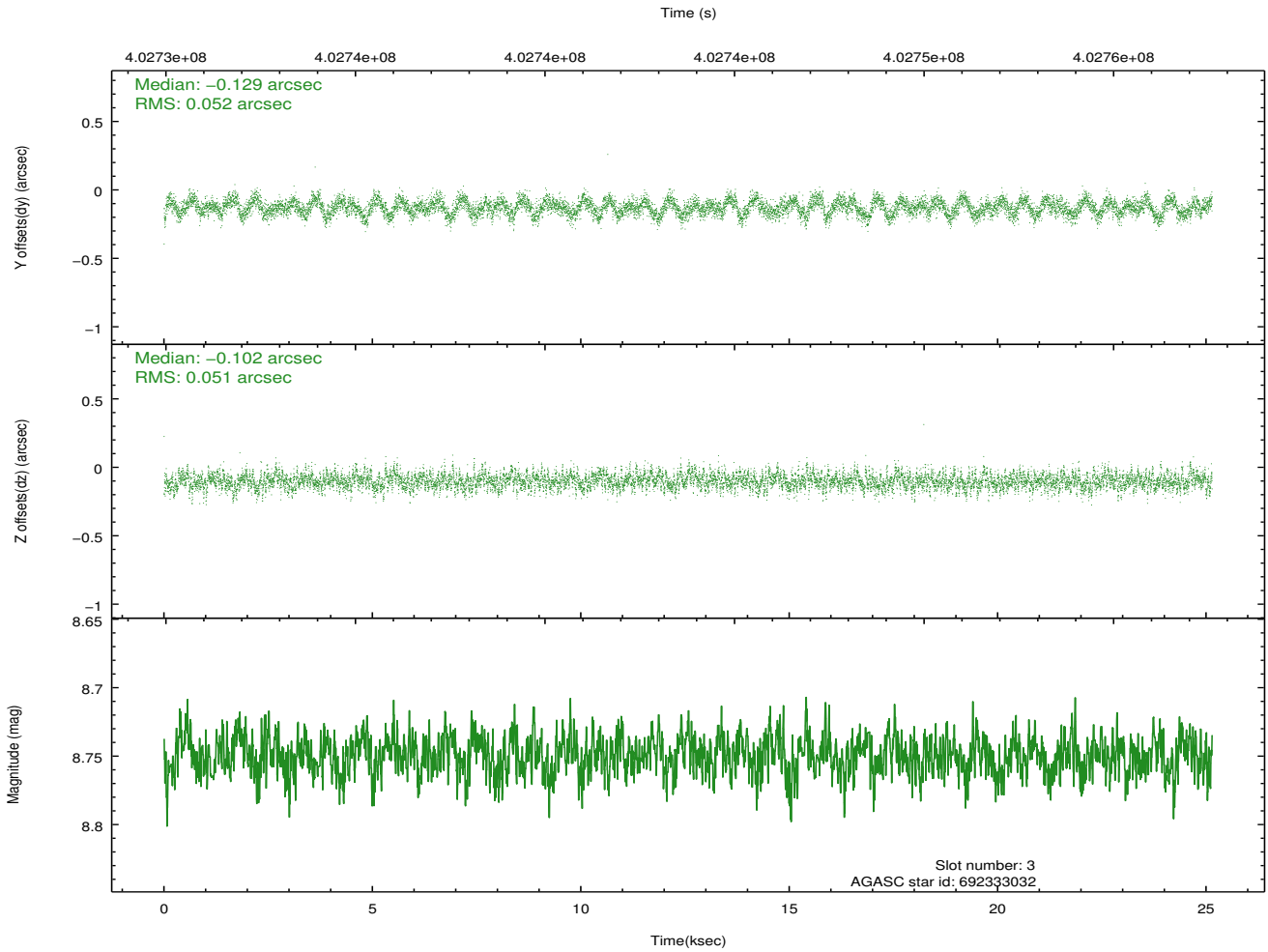
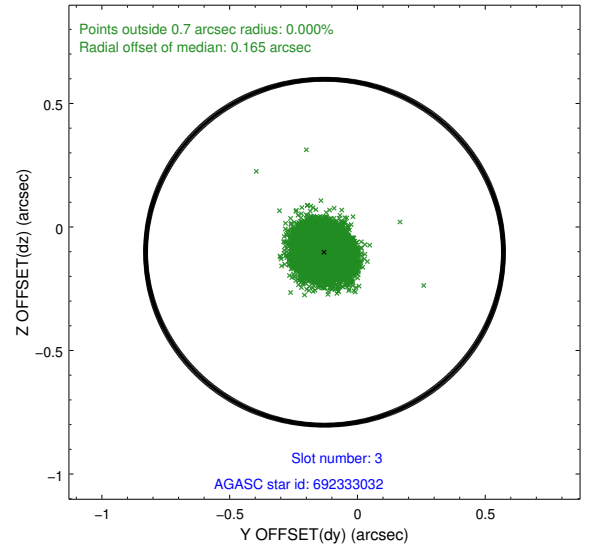
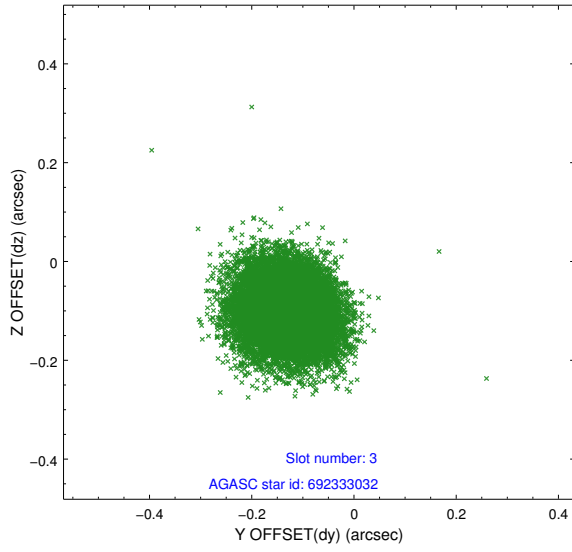


Slot Statistics

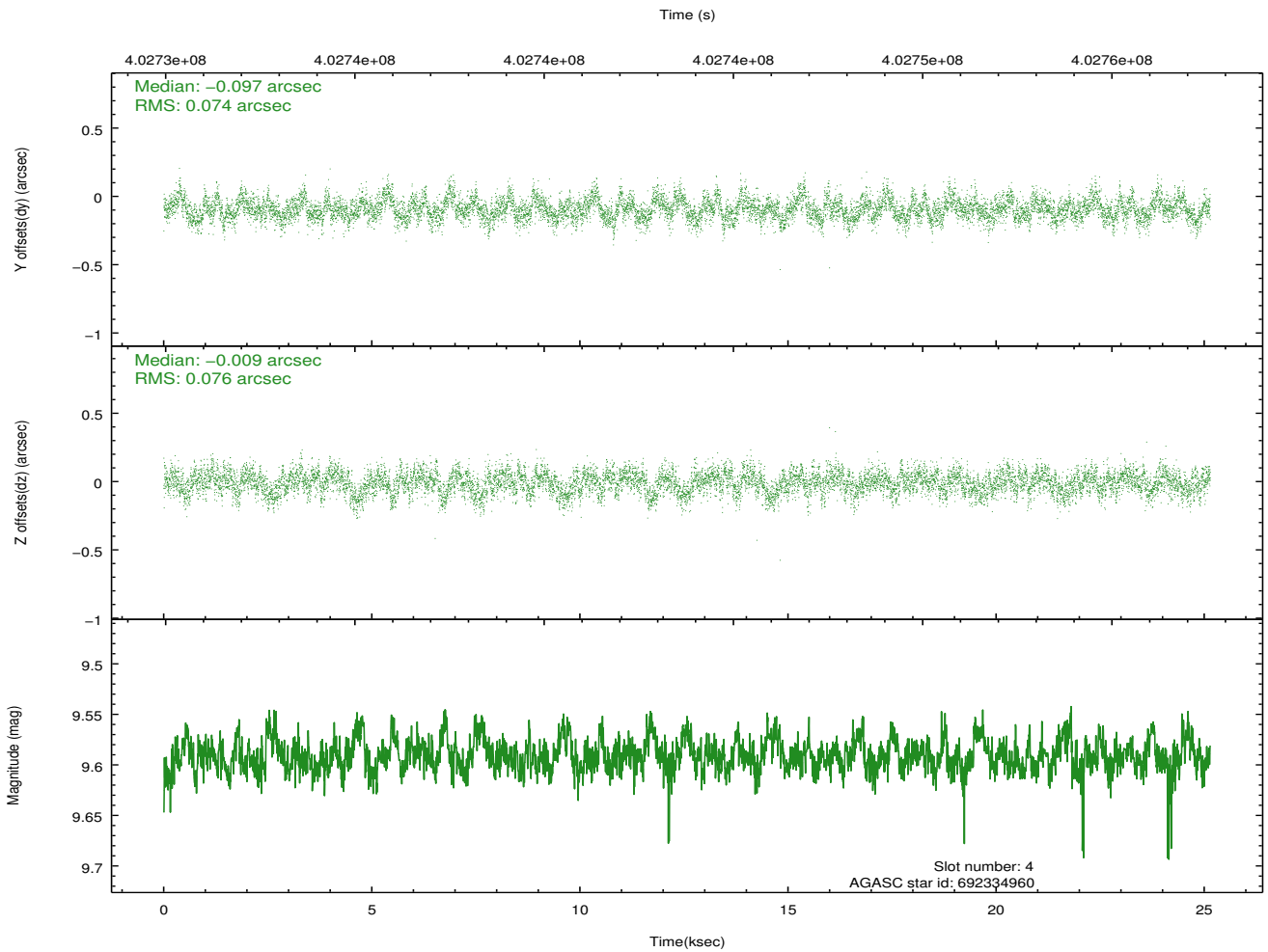
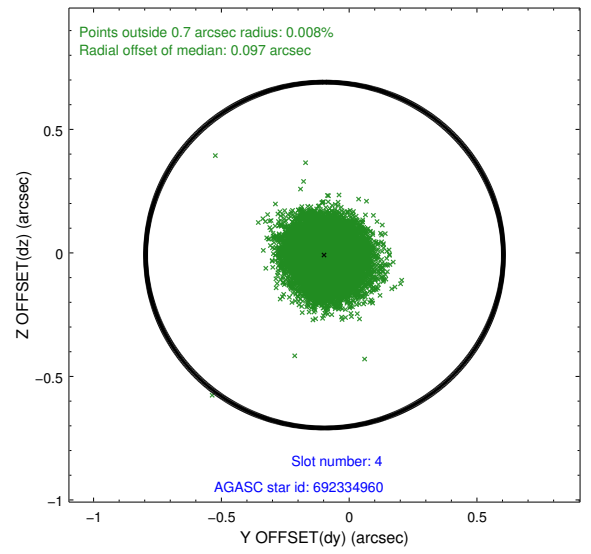
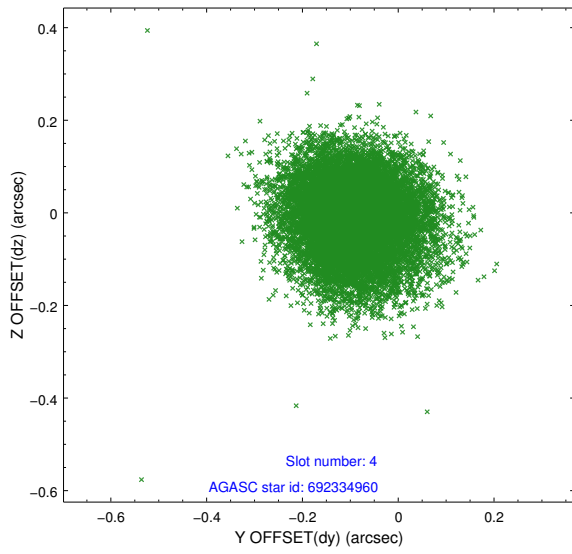
slot	status	id	mag	n_pts	med_dy	med_dz	dr1	dr2	ra	dec	mean_y	mean_z
0	FID	ACIS-S-2	6.91	6132	-0.090	-0.028	0.016	0.037	0.000000	0.000000	-771.77	-1737.67
1	FID	ACIS-S-4	6.98	6133	0.242	0.050	0.013	0.020	0.000000	0.000000	2141.80	170.75
2	FID	ACIS-S-5	7.01	6133	-0.186	-0.015	0.014	0.034	0.000000	0.000000	-1824.55	164.52
3	GUIDE	692333032	8.75	12258	-0.129	-0.102	0.078	0.124	38.230649	-8.700316	-320.68	1541.18
4	GUIDE	692334960	9.59	12254	-0.097	-0.009	0.114	0.182	38.103081	-8.961434	-1365.67	1530.56
5	GUIDE	692716992	9.66	12230	0.122	0.411	0.152	0.250	39.111864	-9.324281	-945.79	-2262.50
6	GUIDE	692717464	9.08	12246	0.275	-0.418	0.200	0.271	38.968454	-8.565552	1278.84	-597.89
7	GUIDE	692722248	8.78	12257	-0.170	0.109	0.138	0.222	39.237347	-8.343405	2419.56	-1102.71

2.4 Star Slots

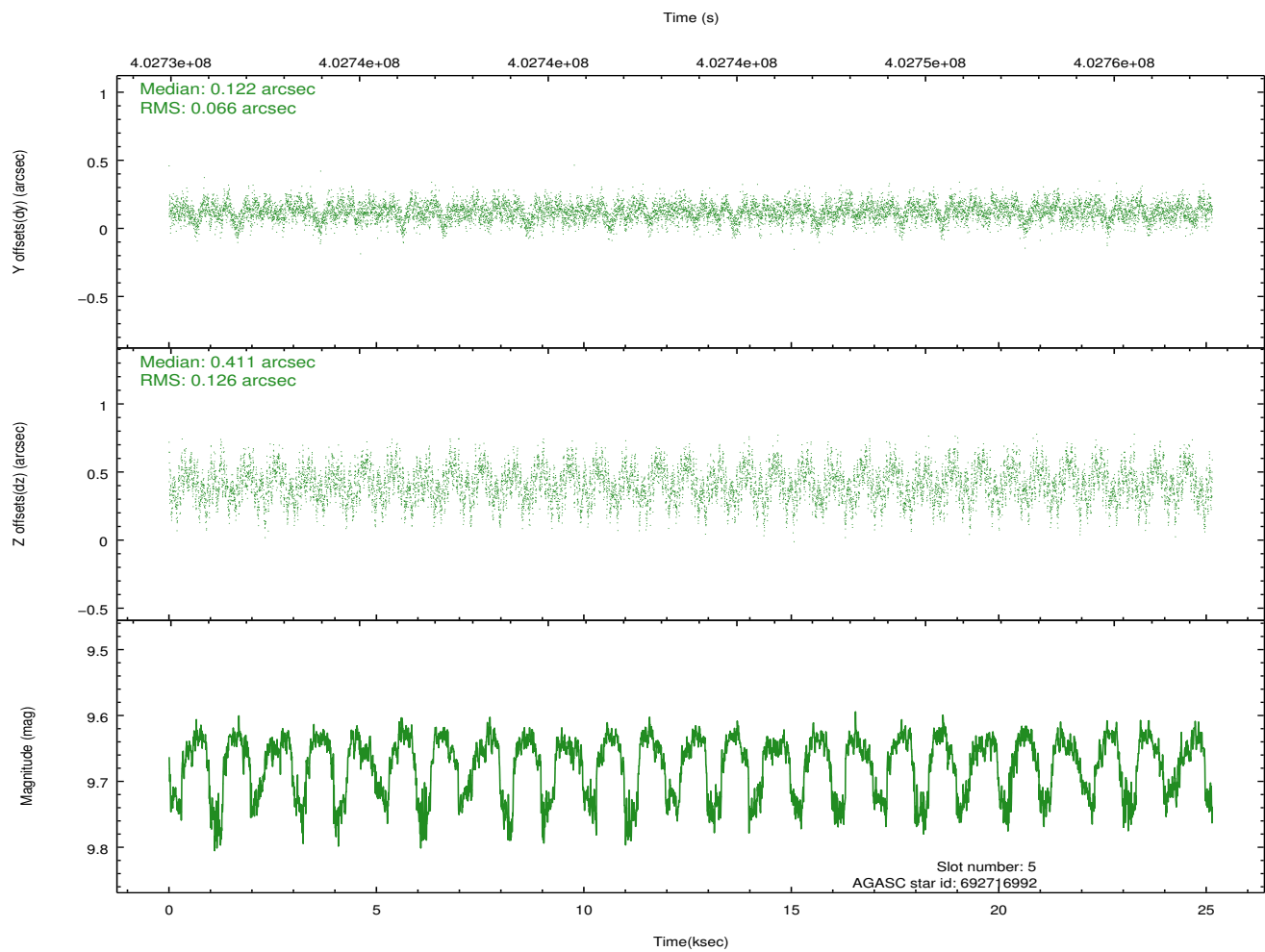
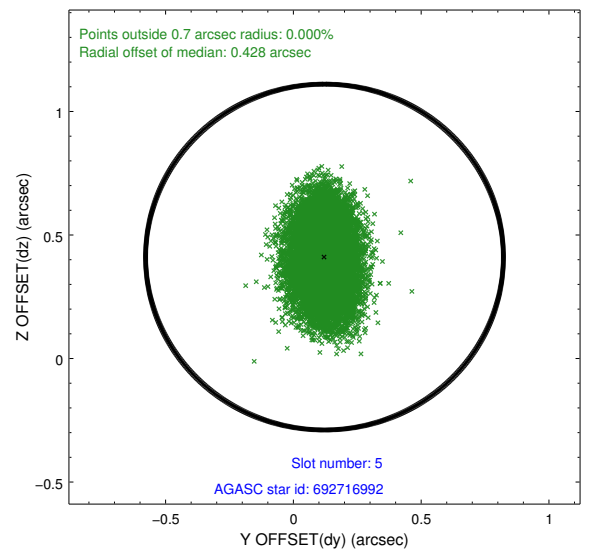
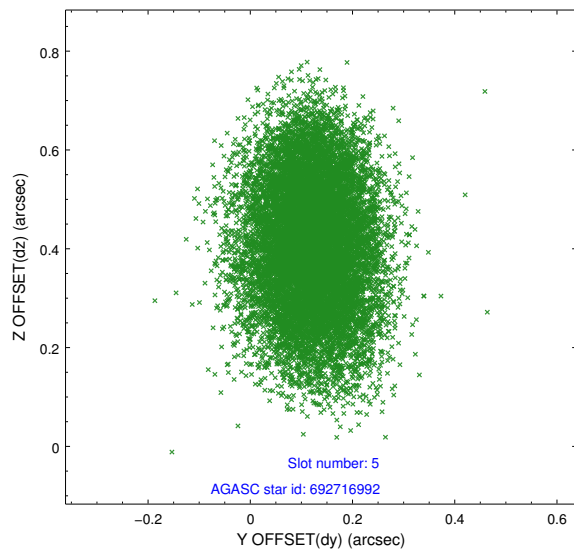
2.4.1 Slot 3



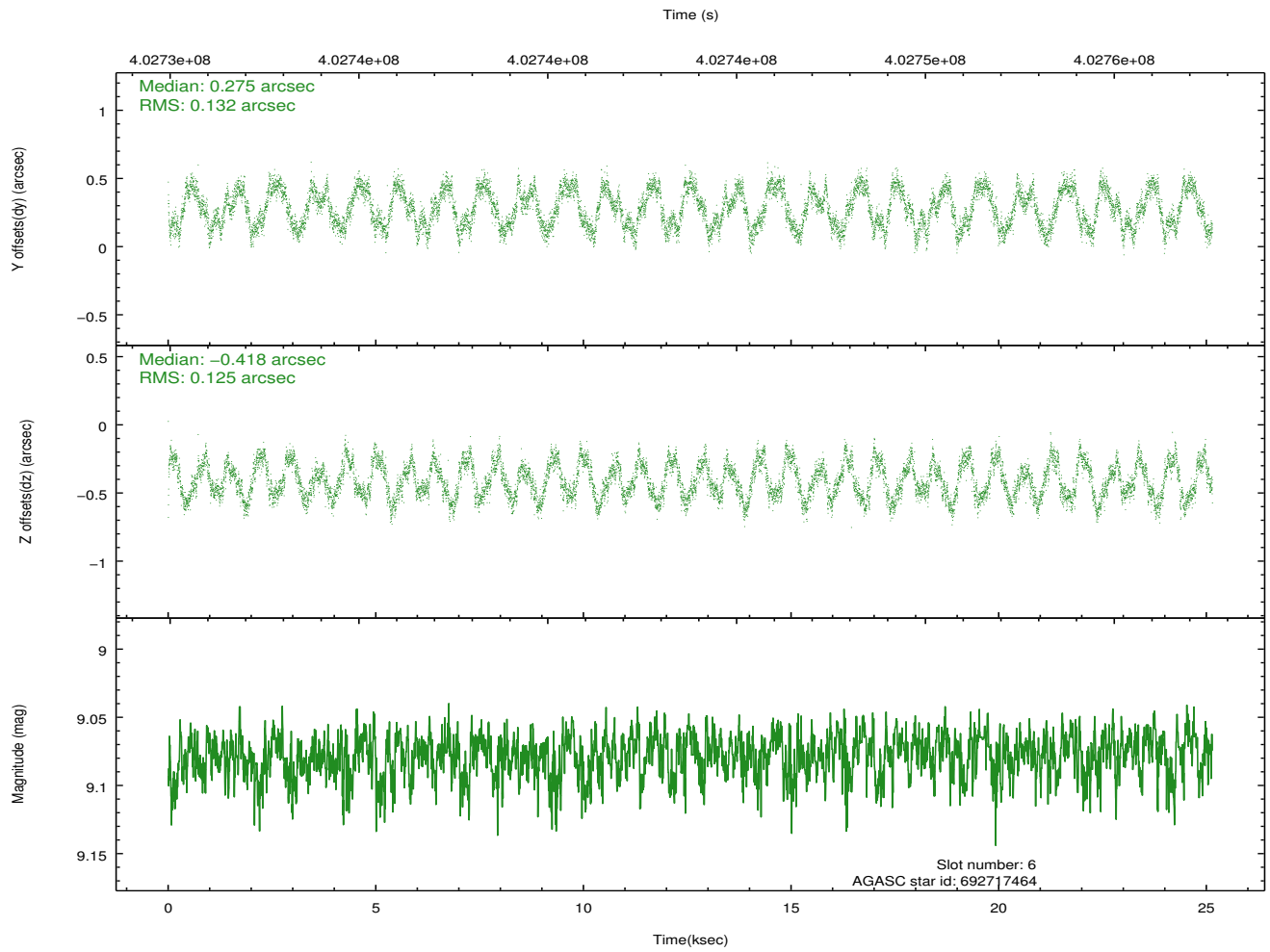
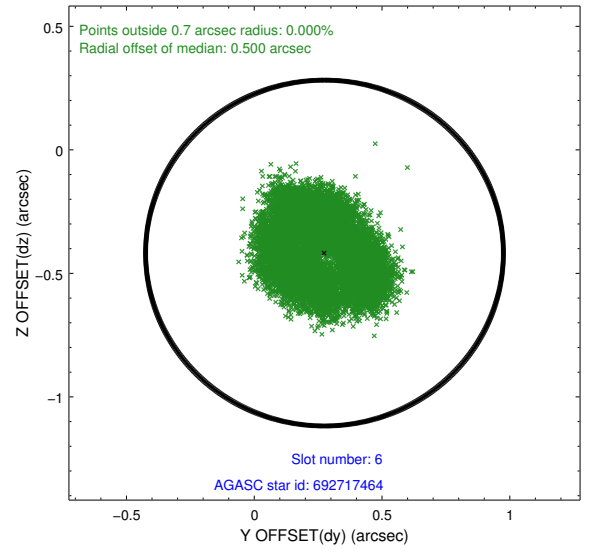
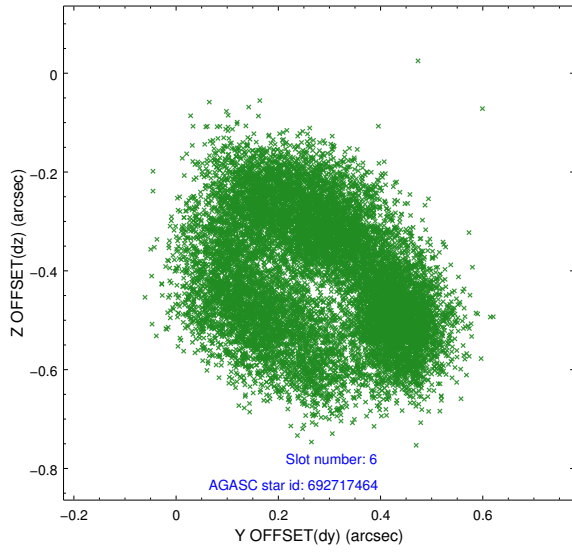
2.4.2 Slot 4



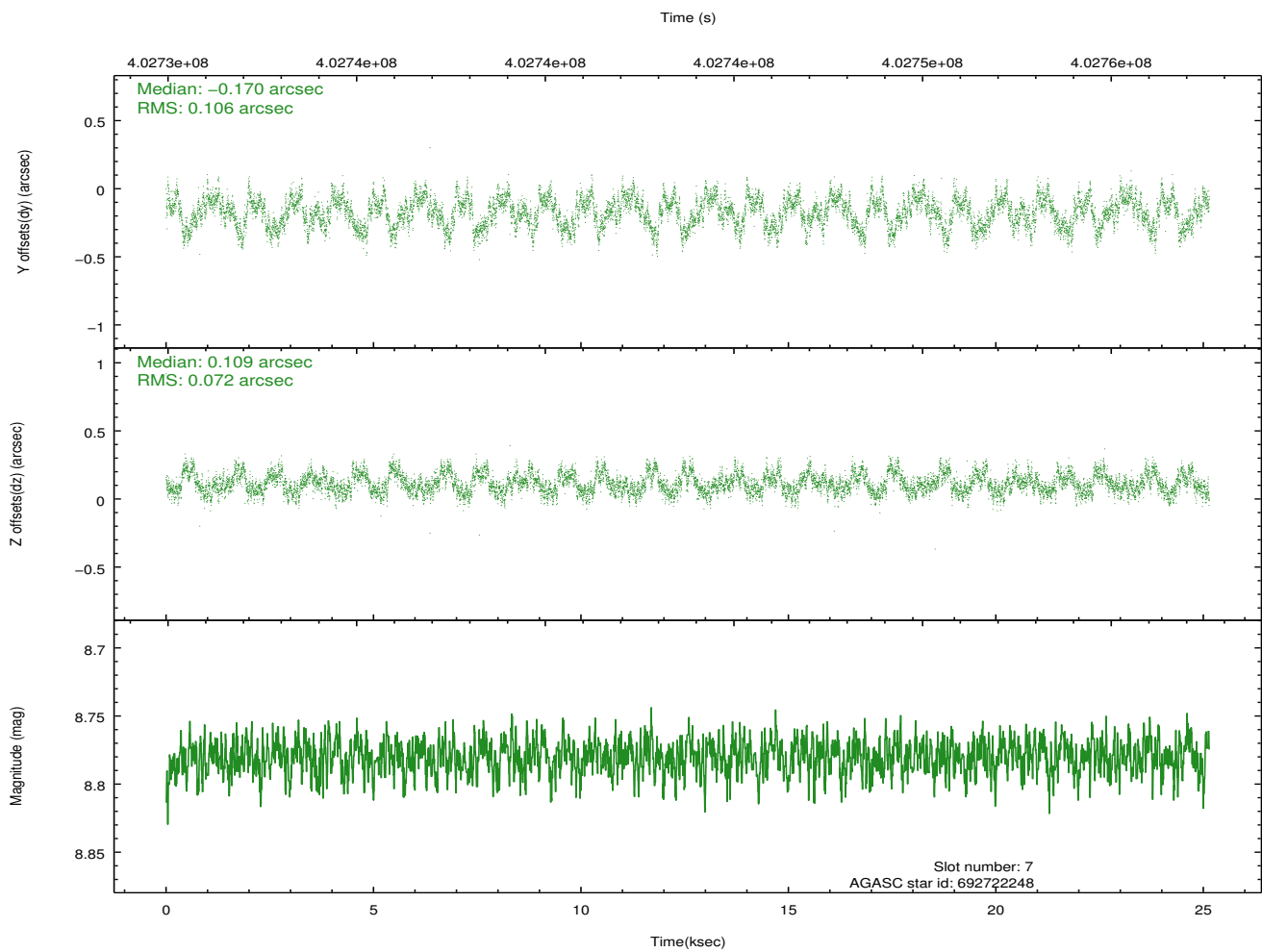
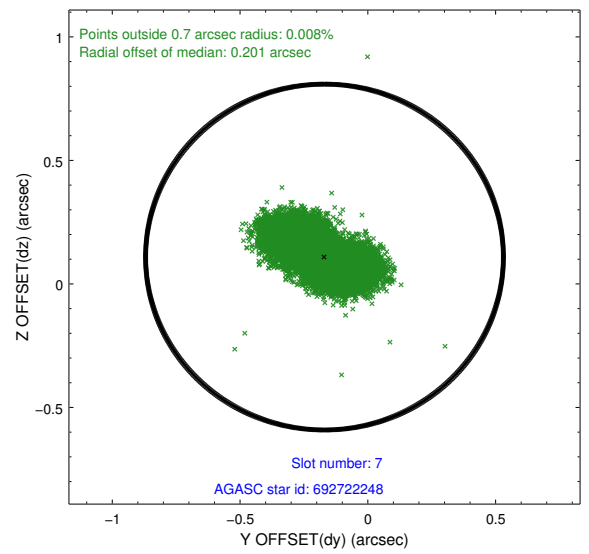
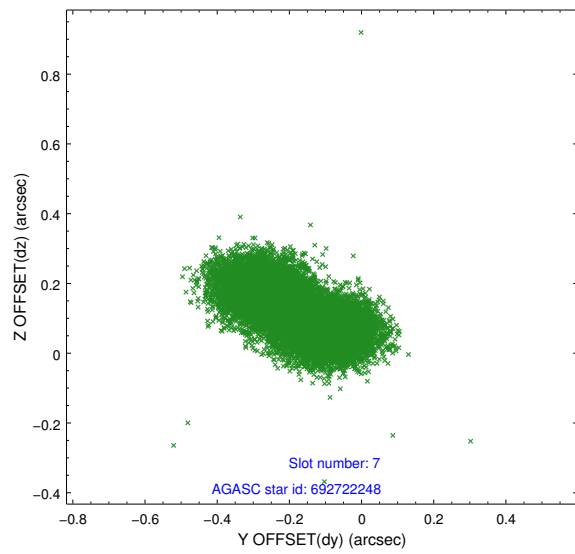
2.4.3 Slot 5



2.4.4 Slot 6

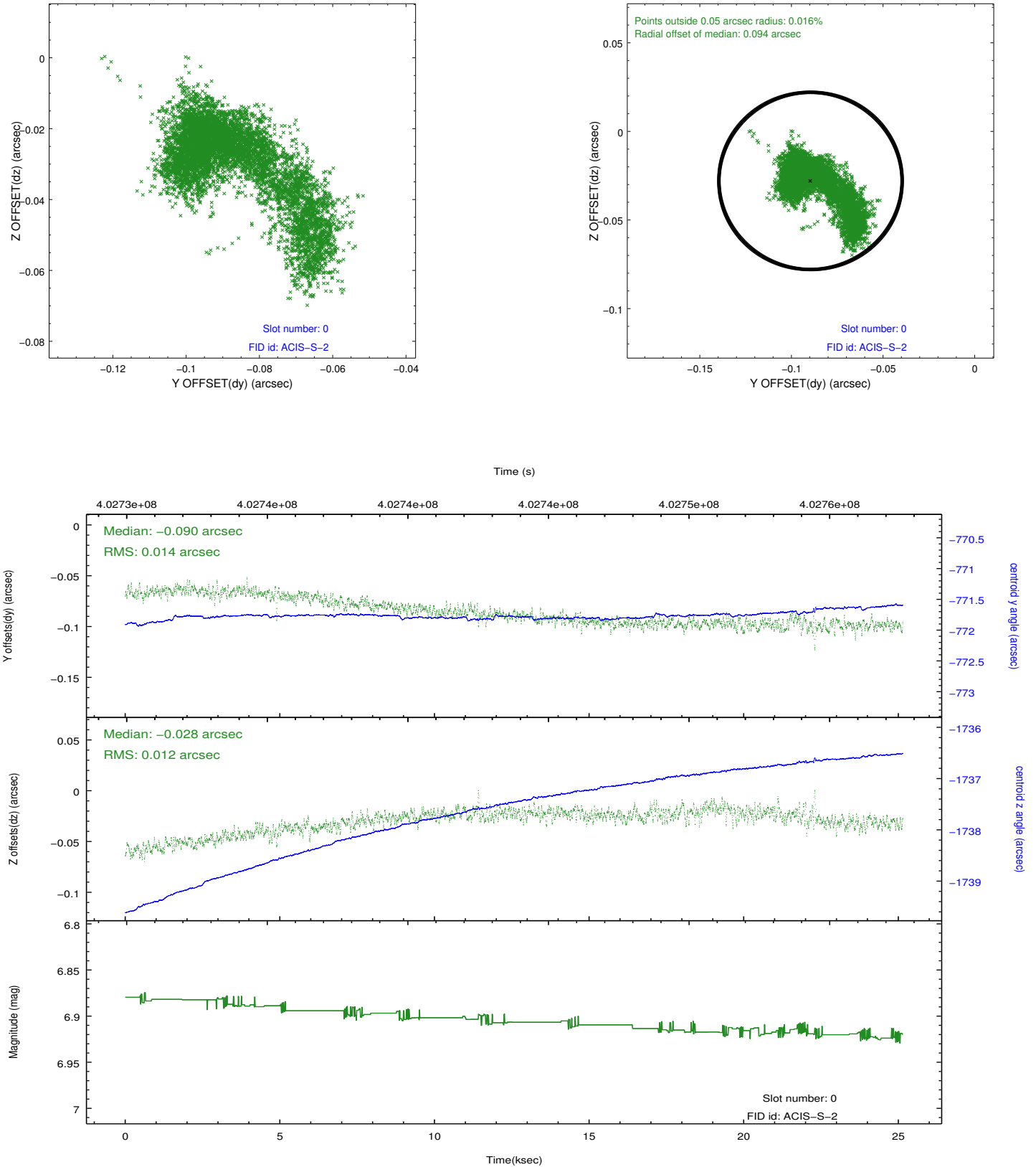


2.4.5 Slot 7

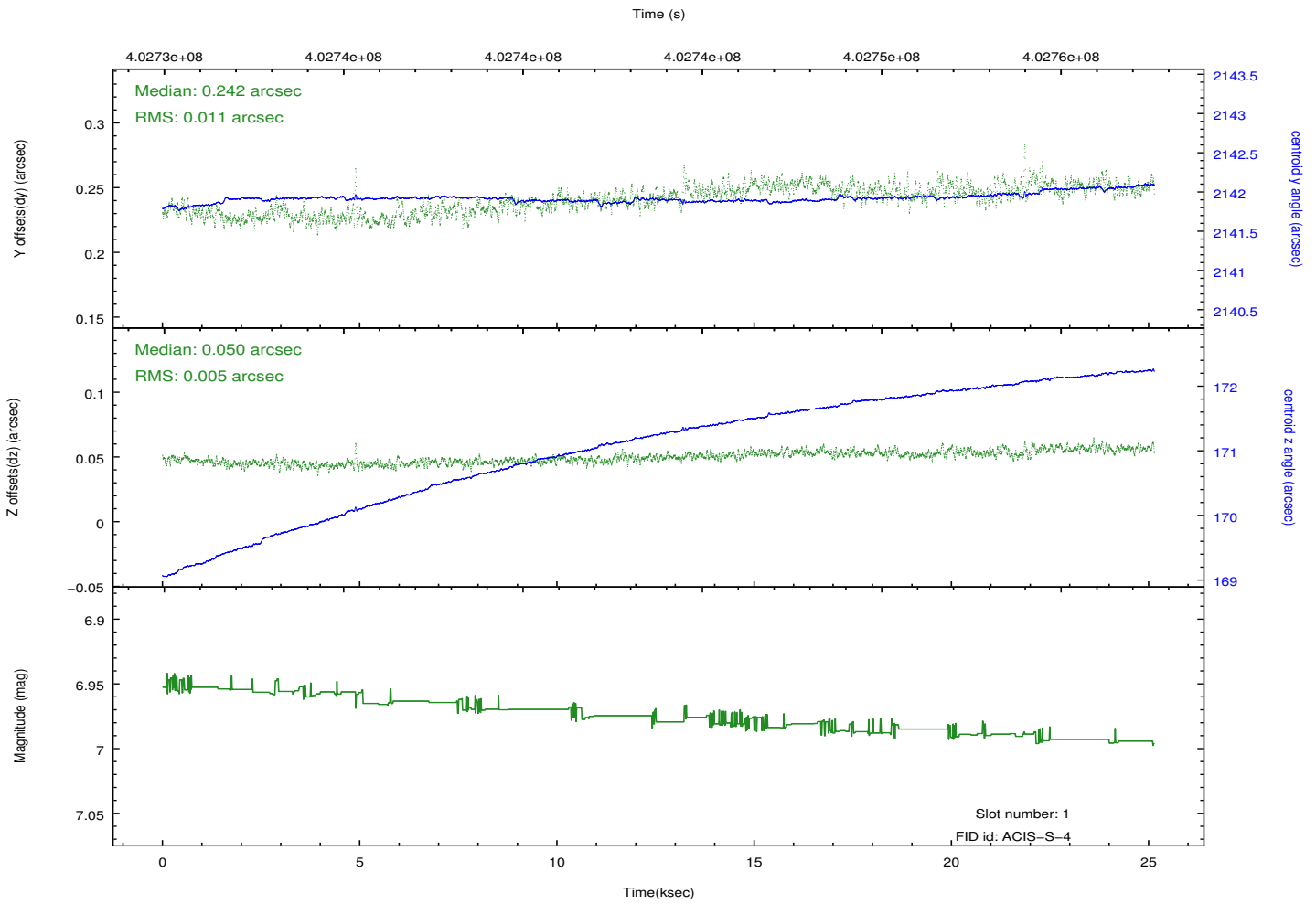
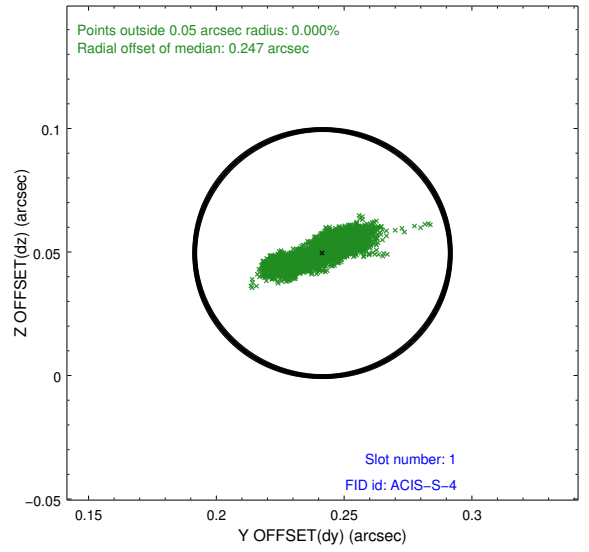
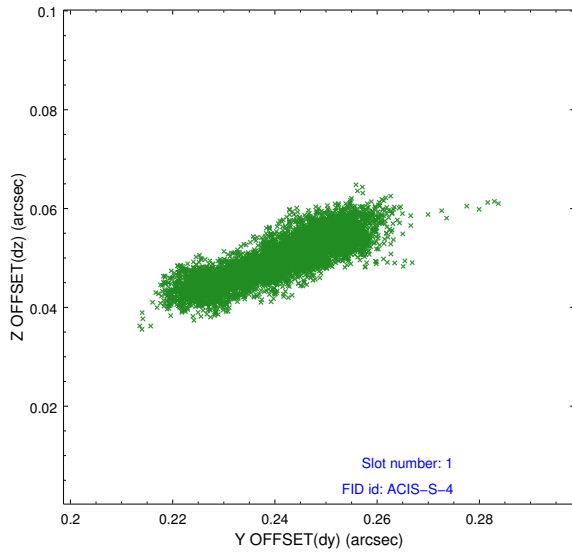


2.5 FID Slots

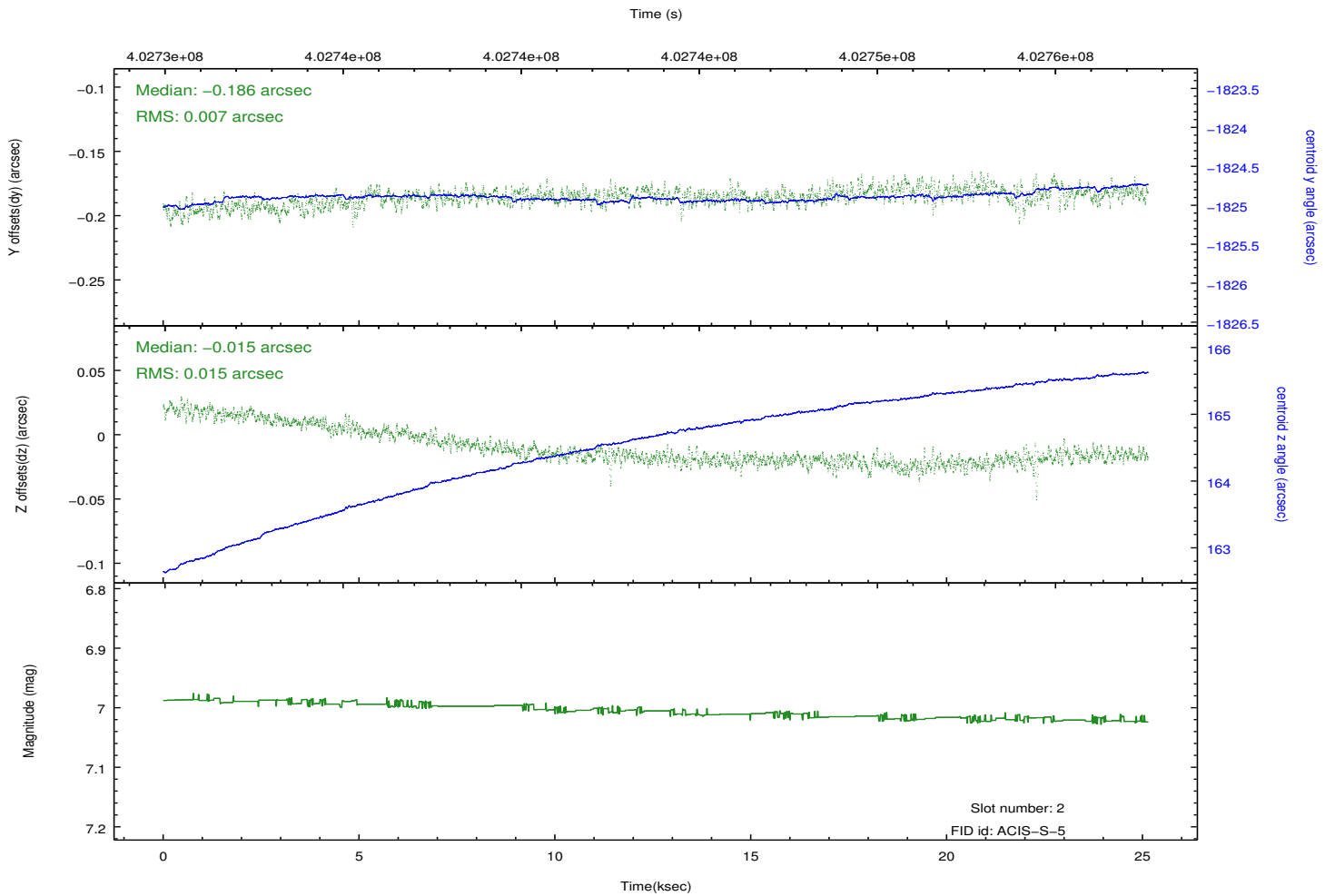
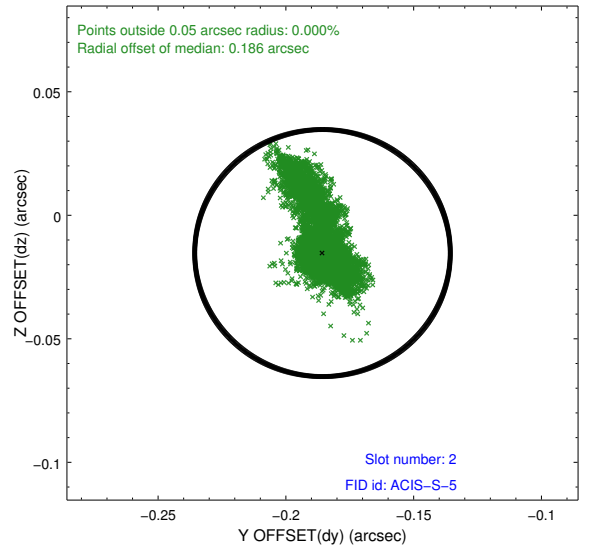
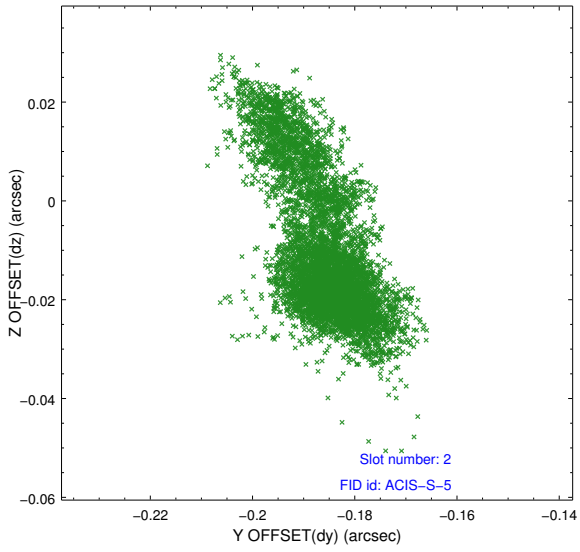
2.5.1 Slot 0



2.5.2 Slot 1



2.5.3 Slot 2



A Summary

A.1 Status

V&V Scientist	Jen Lauer
V&V Date (YYYY-MM-DD)	2012.07.12
V&V Edition	1
V&V Disposition and Status	OK
V&V Charge Time	25.009915726066

A.2 Comments