

V&V Reference Report

L2 ASCDS Version : 8.4.3

Observation 13486 - L2 Version 1
Chandra X-Ray Center

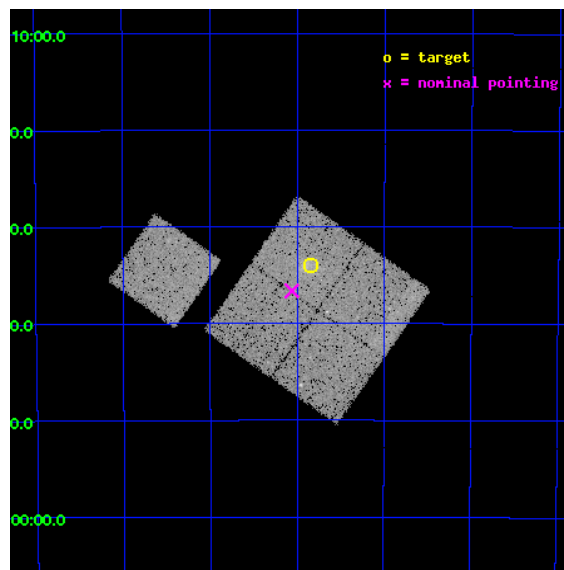
L2 Processing Date : Feb 26 2012

Contents

1	Front	2
2	OBI	3
2.1	OBI	3
2.1.1	Images	3
2.1.2	Bias	3
2.1.3	Parameters	4
2.1.4	Events	4
2.2	Compared Parameters	5
2.3	Aspect	6
2.4	Star Slots	9
2.4.1	Slot 3	9
2.4.2	Slot 4	10
2.4.3	Slot 5	11
2.4.4	Slot 6	12
2.4.5	Slot 7	13
2.5	FID Slots	14
2.5.1	Slot 0	14
2.5.2	Slot 1	15
2.5.3	Slot 2	16
A	Summary	17
A.1	Status	17
A.2	Comments	17

1 Front

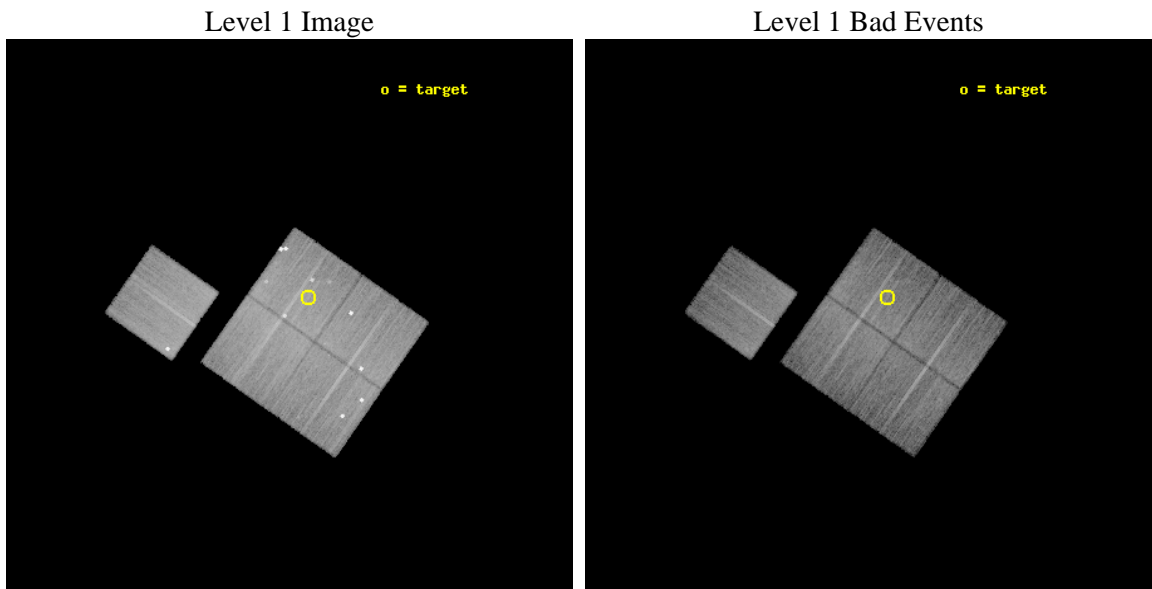
seq_num	801127	Sequence number
obs_id	13486	Observation id
title	Cosmology and Cluster Evolution from the 80 Most Massive Clusters in 2000 deg ² from the South Pole Telescope Survey	Proposal title
observer	Dr Bradford Benson	Principal investigator
object	SPT-CLJ0655-5234	Source name
dtcycle	0	
cycle	P	events from which exps? Prim/Second/Both
ra_targ	103.960833	Observer's specified target RA [deg]
dec_targ	-52.567389	Observer's specified target Dec [deg]
ra_nom	104.01522824578	Nominal RA [deg]
dec_nom	-52.610624029758	Nominal Dec [deg]
roll_nom	305.05960049942	Nominal Roll [deg]
revision	1	Processing version of data
ontime	20477.540858746	Sum of GTIs [s]
livetime	20209.98671208	Livetime [s]
ontime0	20474.276718378	Sum of GTIs [s]
ontime1	20477.458778739	Sum of GTIs [s]
ontime2	20474.358808398	Sum of GTIs [s]
ontime3	20477.540858746	Sum of GTIs [s]
ontime6	20477.376698732	Sum of GTIs [s]
l2events	67518	Number of level 2 events



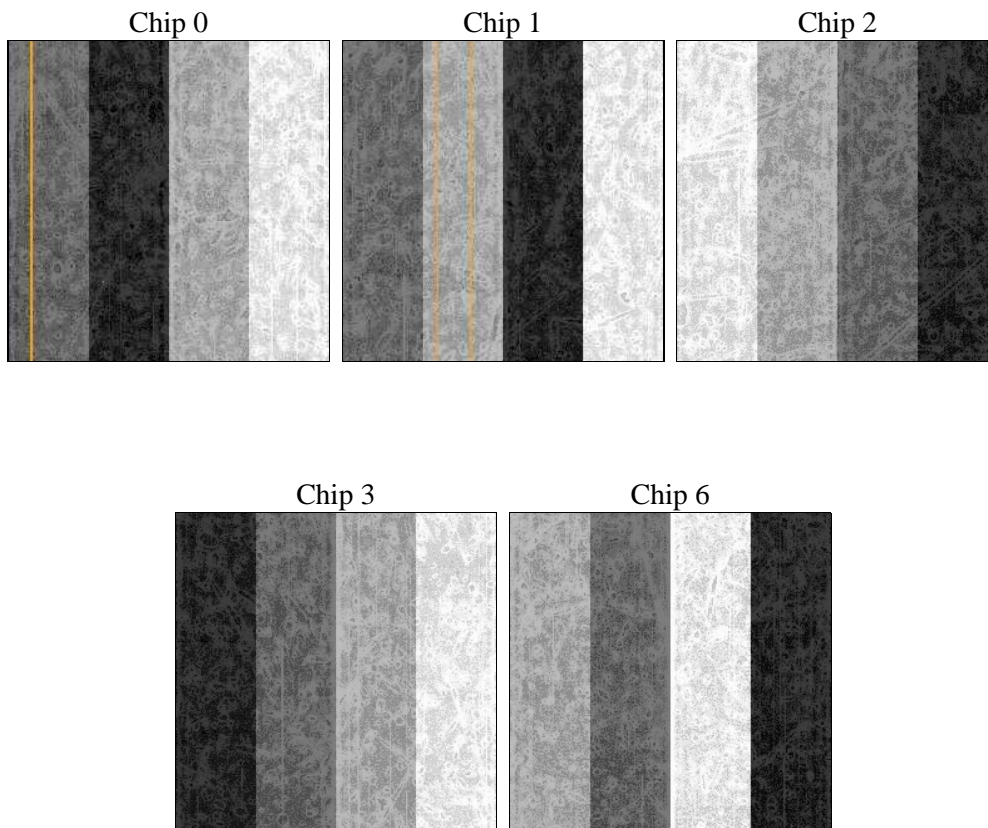
2 OBI

2.1 OBI

2.1.1 Images



2.1.2 Bias



2.1.3 Parameters

obi_num	0	Obi number	sched_exp_time	20400.000000	[s] Scheduled observation exposure time
ascdsver	8.4.3	Processing system revision	ontime	20477.540858746	Sum of GTIs [s]
caldbver	4.4.8	 	ontime0	20474.276718378	Sum of GTIs [s]
date	2012-02-26T15:27:24	Date and time of file creation	ontime1	20477.458778739	Sum of GTIs [s]
revision	1	Processing version of data	ontime2	20474.358808398	Sum of GTIs [s]
			ontime3	20477.540858746	Sum of GTIs [s]
			ontime6	20477.376698732	Sum of GTIs [s]
			l1events	817461	Number of level 1 events

2.1.4 Events

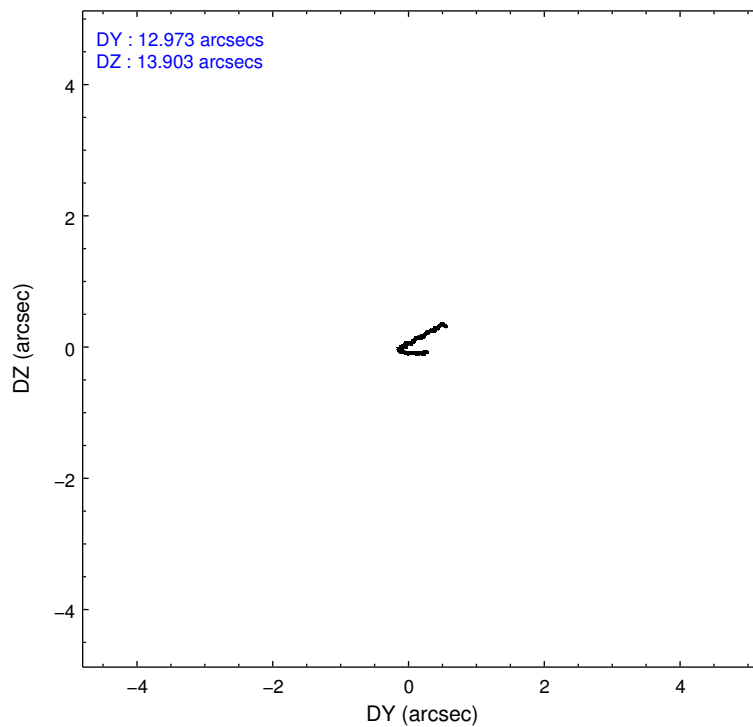
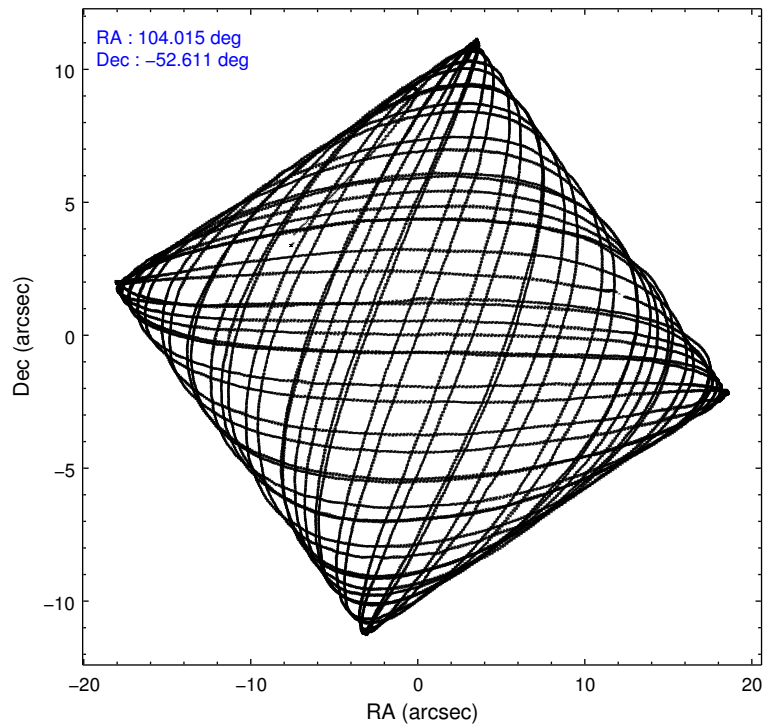
	ccd 0	ccd 1	ccd 2	ccd 3	ccd 6
level 1 events	150194	156843	165132	175514	169778
rejected events	118893	126205	144984	141255	144959
rejected %	79%	80%	87%	80%	85%

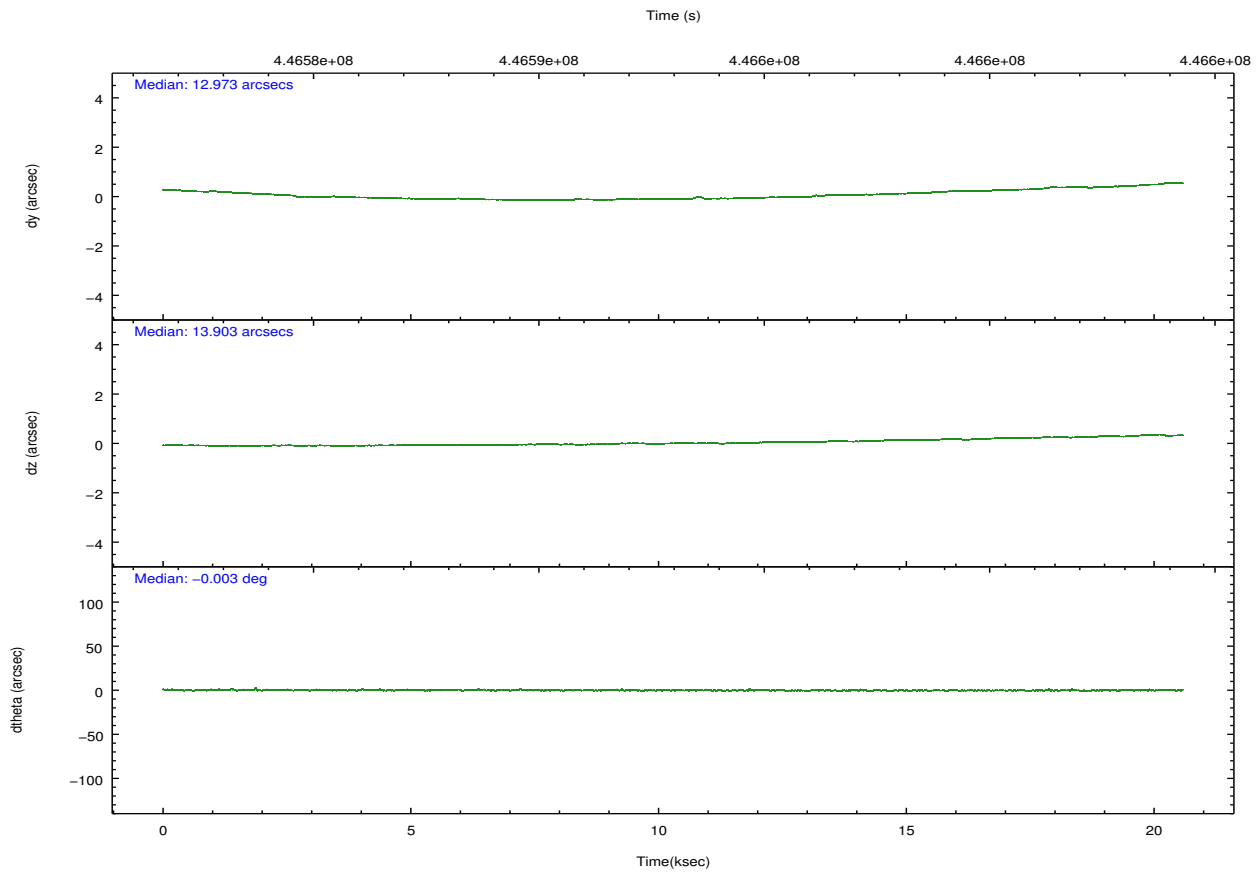
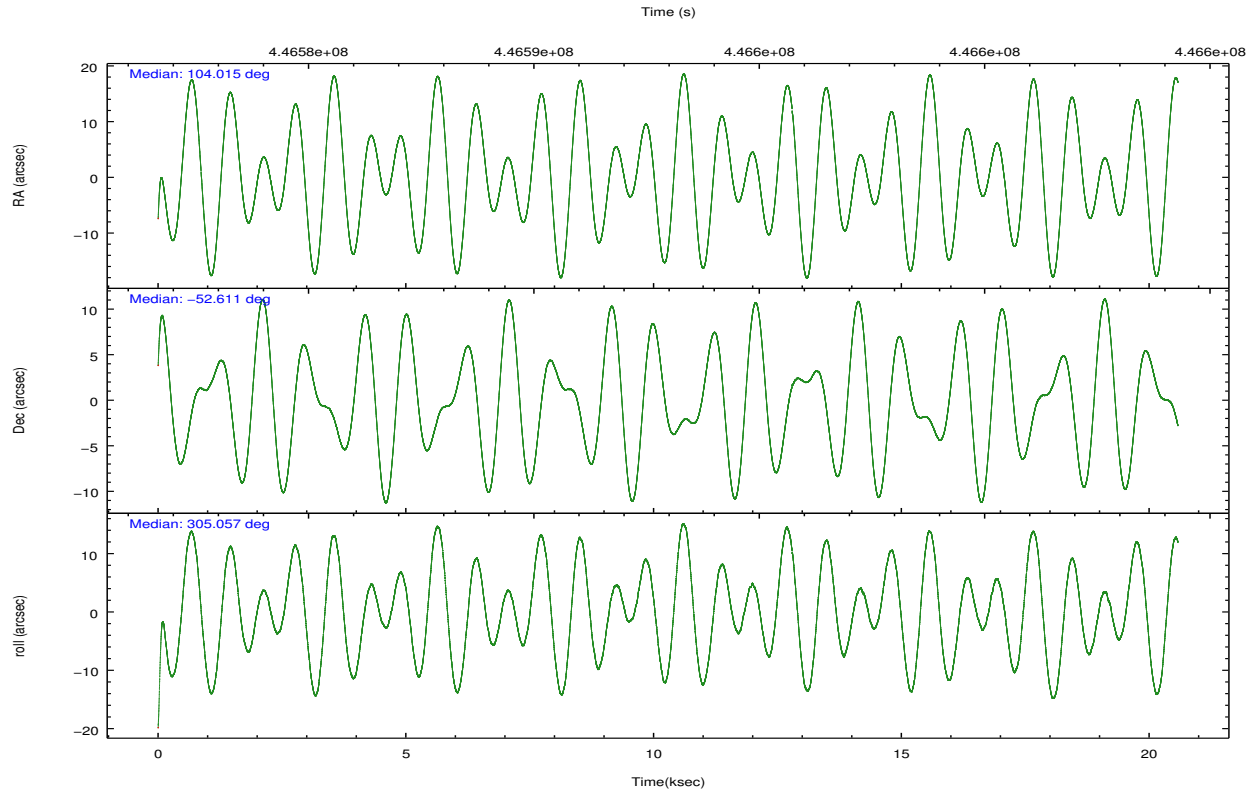
	ccd 0	ccd 1	ccd 2	ccd 3	ccd 6
grade 0 events	19525	12897	7667	21647	13182
	12%	8%	4%	12%	7%
grade 1 events	164	122	112	225	135
	0%	0%	0%	0%	0%
grade 2 events	5579	10777	5743	6491	5038
	3%	6%	3%	3%	2%
grade 3 events	1578	1706	1542	1533	1595
	1%	1%	0%	0%	0%
grade 4 events	1478	1625	1917	1570	1554
	0%	1%	1%	0%	0%
grade 5 events	5658	5689	5360	6209	6069
	3%	3%	3%	3%	3%
grade 6 events	3150	3640	3284	3032	3460
	2%	2%	1%	1%	2%
grade 7 events	113062	120387	139507	134807	138745
	75%	76%	84%	76%	81%

2.2 Compared Parameters

Parameter	Planned	Actual	Parameter	Planned	Actual
Instrument	ACIS	ACIS	Obspar format version number	7	7
Detector	ACIS-01236	ACIS-01236	Obspar file type	PREDICTED	ACTUAL
Grating	NONE	NONE	Obspar update status	NONE	UPDATED
Data mode	VFAINT	VFAINT	CCD I0 on	Y	Y
Observation mode	POINTING	POINTING	CCD I1 on	Y	Y
[deg] Pointing RA	103.974103	104.015228245783	CCD I2 on	Y	Y
[deg] Pointing Dec	-52.599142	-52.61062402975752	CCD I3 on	Y	Y
[deg] Pointing Roll	304.818253	305.0596004994202	CCD S0 on	N	N
[mm] SIM focus pos	-0.782348	-0.7809083437167272	CCD S1 on	N	N
[mm] SIM defocus	0	0.001439871863259334	CCD S2 on	O1	Y
[mm] SIM translation stage pos	-225.842463	-225.8433433320239	CCD S3 on	N	N
[mm] SIM translation stage offset	-7.75	-7.749109670905796	CCD S4 on	N	N
[s] Observation start time (MET)	446582870.184000	446581852.13823	CCD S5 on	N	N
Observation start date	2012-02-25T18:46:44	2012-02-25T18:30:52	Number of optional ACIS chips dropped	0	0
[s] Observation end time (MET)	446603270.184000	446604143.83941	On-chip summing requested	N	N
Observation end date	2012-02-26T00:26:44	2012-02-26T00:42:23	Subarray requested	NONE	NONE
Read mode	TIMED	TIMED	Alternating exposures requested	N	N
			[s] Primary exposure time	0.000000	3.1

2.3 Aspect



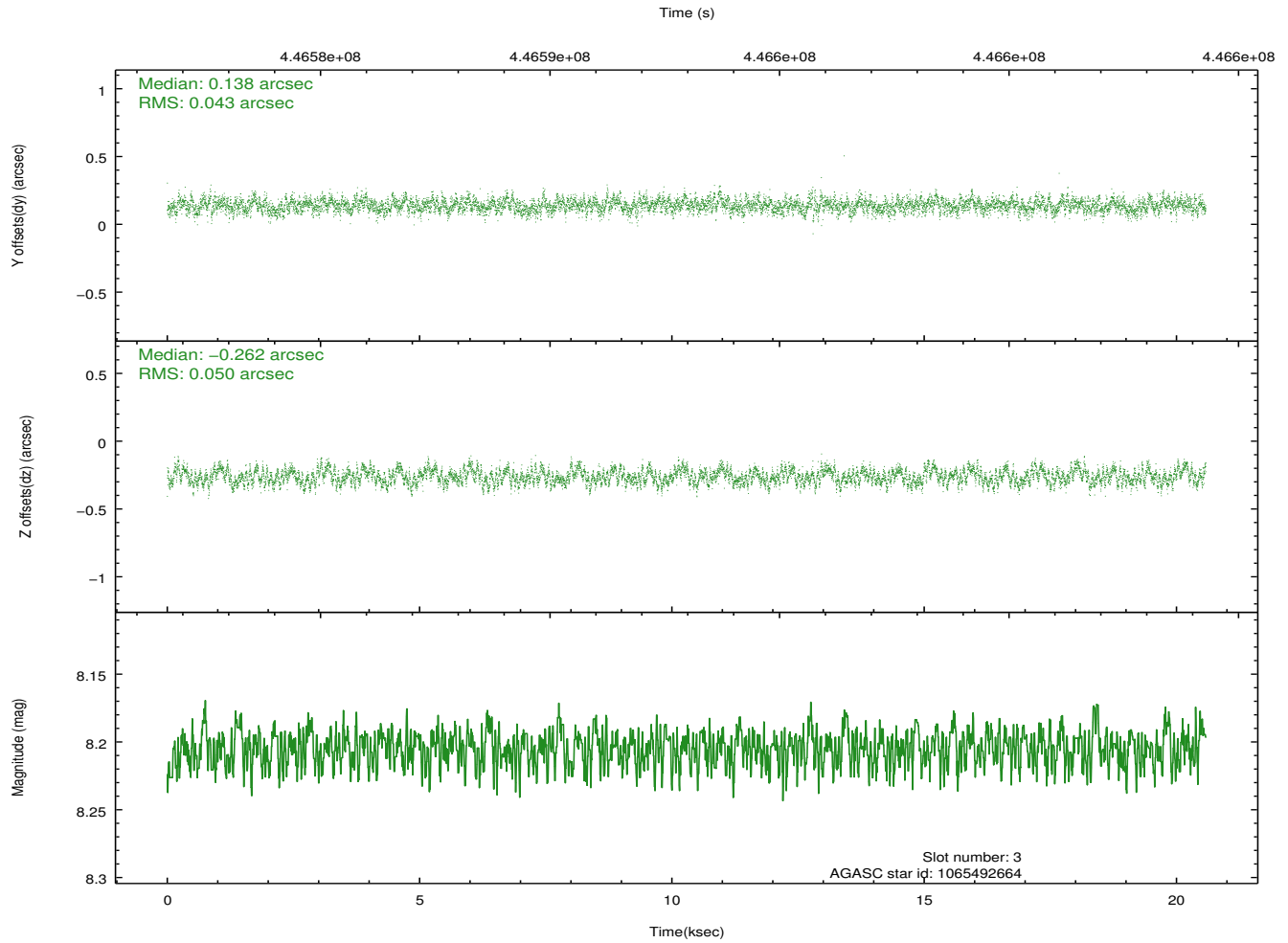
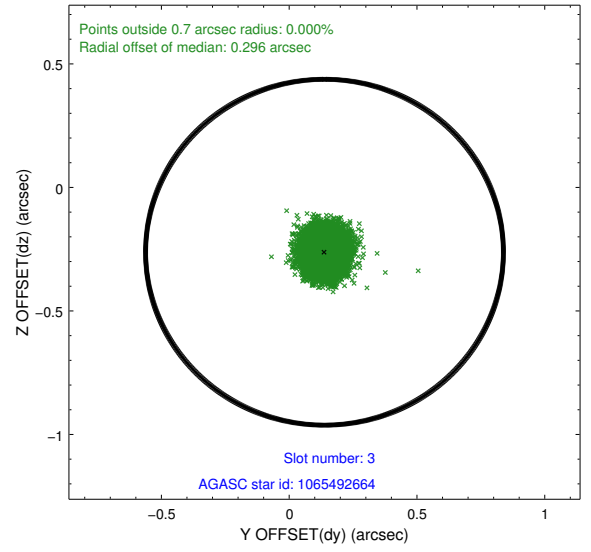
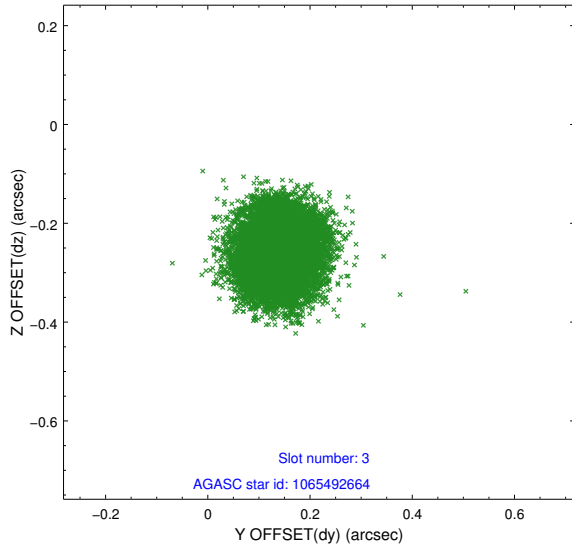


Slot Statistics

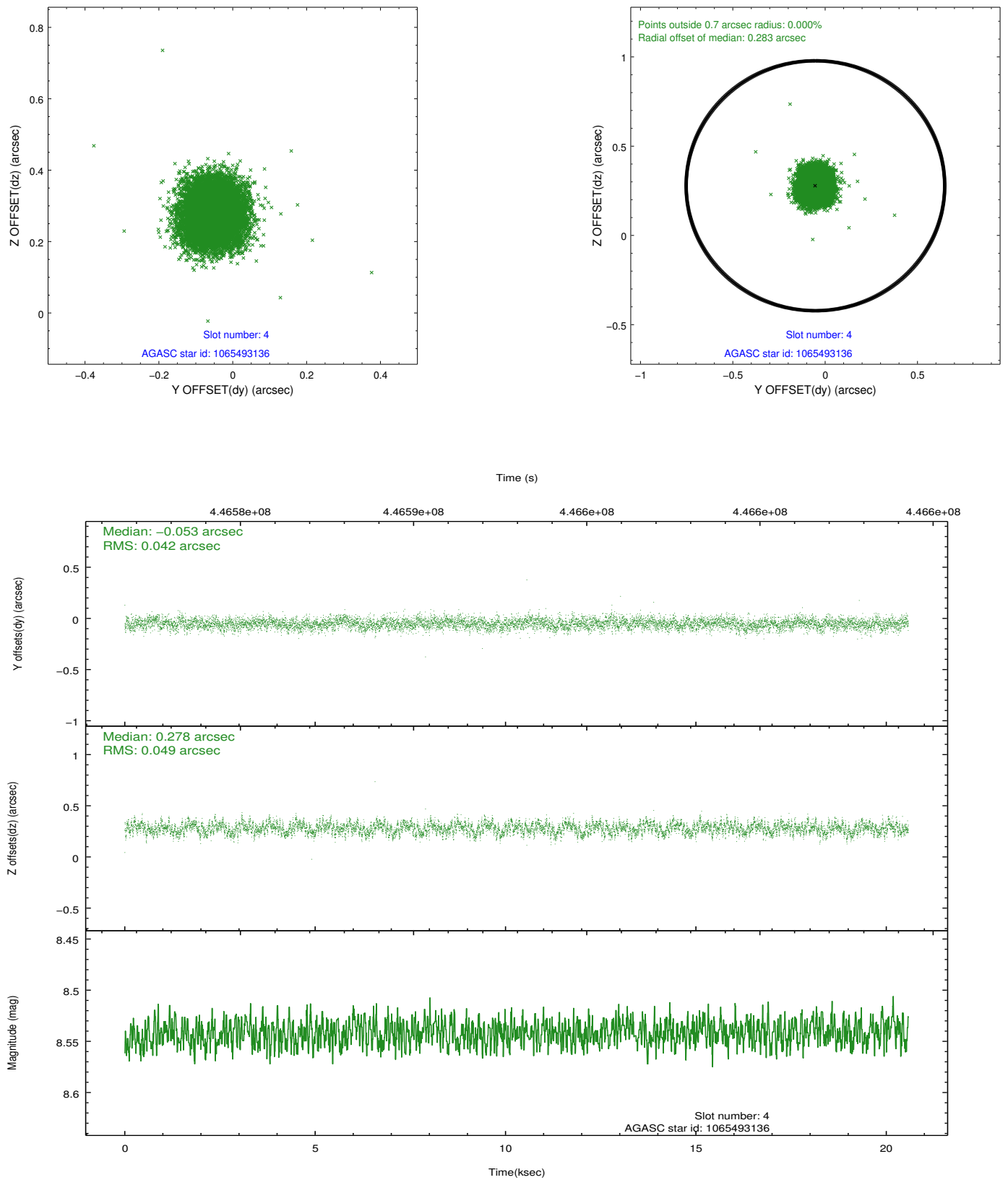
slot	status	id	mag	n_pts	med_dy	med_dz	dr1	dr2	ra	dec	mean_y	mean_z
0	FID	ACIS-I-1	7.12	5020	0.098	-0.055	0.007	0.013	0.000000	0.000000	926.44	-996.63
1	FID	ACIS-I-5	7.12	5020	-0.286	0.079	0.010	0.019	0.000000	0.000000	-1822.00	900.80
2	FID	ACIS-I-6	7.14	5020	0.096	0.046	0.010	0.019	0.000000	0.000000	391.73	1545.53
3	GUIDE	1065492664	8.20	10040	0.138	-0.262	0.071	0.111	103.637856	-52.236460	-1493.36	135.83
4	GUIDE	1065493136	8.54	10033	-0.053	0.278	0.069	0.109	103.305609	-52.191813	-2040.52	-377.35
5	GUIDE	1118974968	9.12	10029	-0.162	0.028	0.113	0.179	104.851302	-52.581578	1053.11	1604.97
6	GUIDE	1118835904	7.98	10040	0.103	0.058	0.063	0.099	102.692780	-52.639823	-1457.02	-2395.35
7	GUIDE	1118969544	8.98	10028	-0.025	-0.106	0.083	0.133	104.851987	-53.051456	2431.06	623.21

2.4 Star Slots

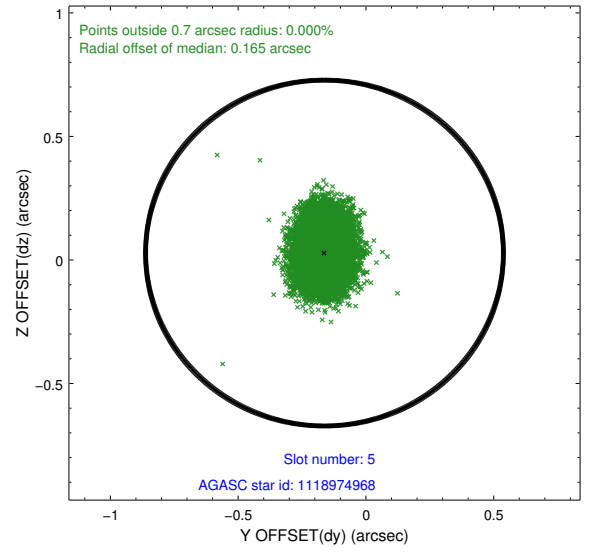
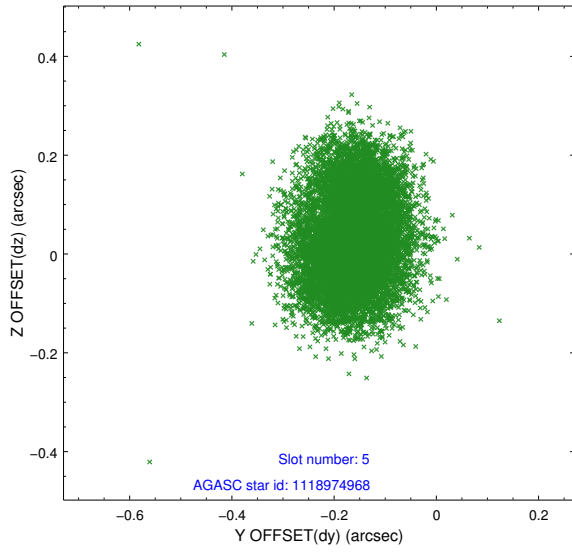
2.4.1 Slot 3



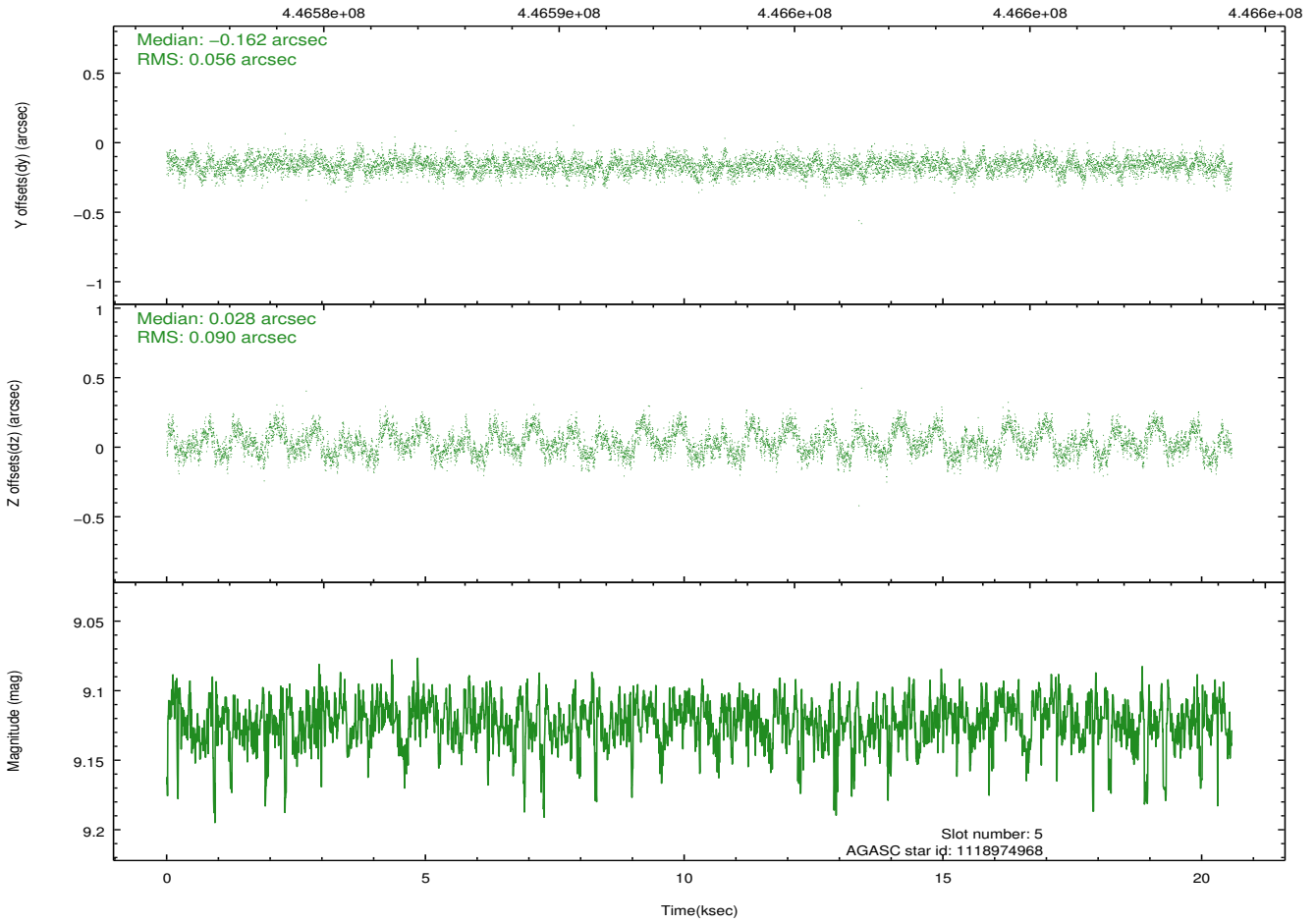
2.4.2 Slot 4



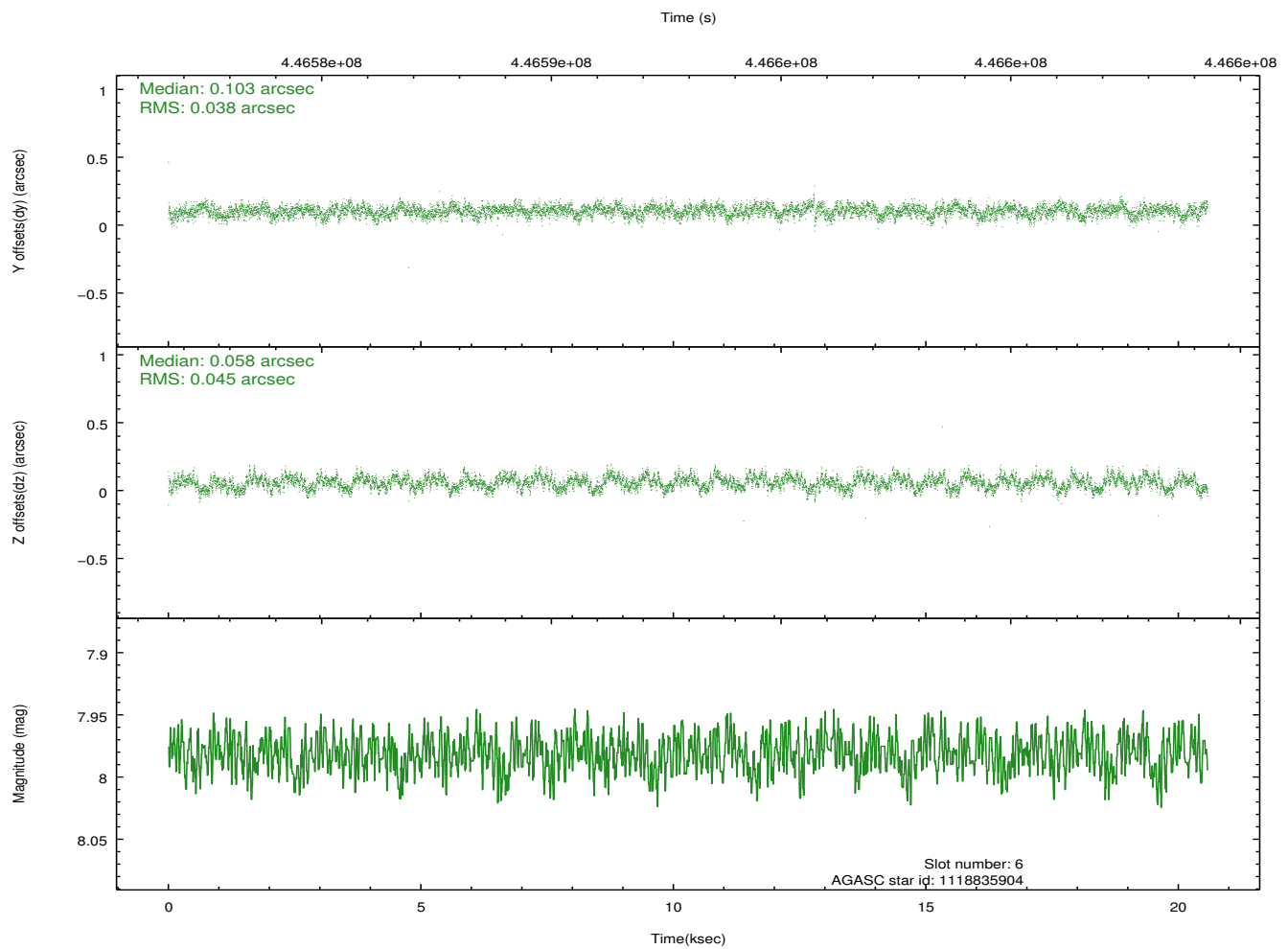
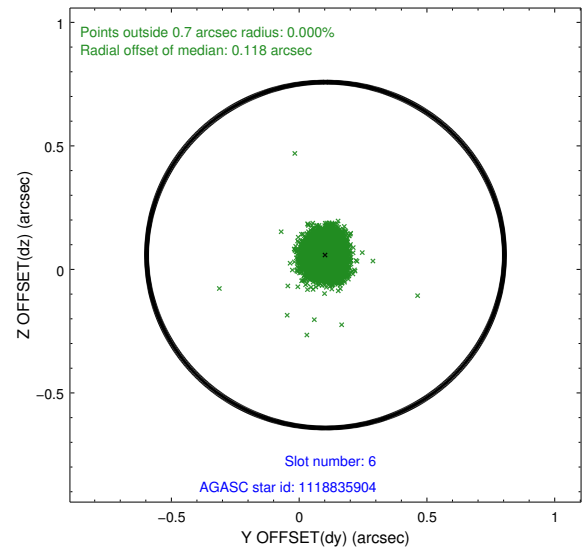
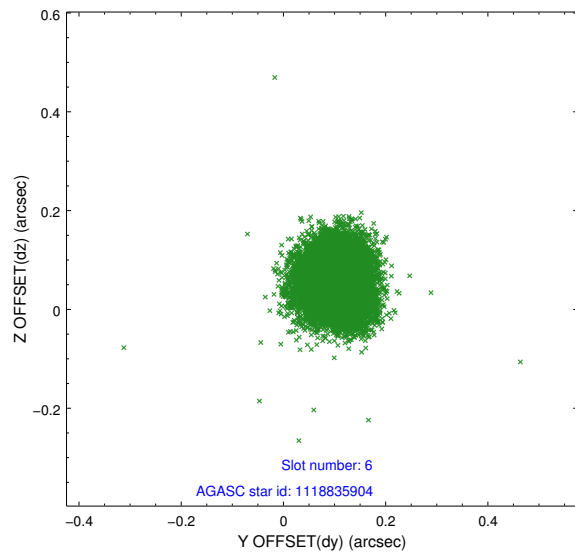
2.4.3 Slot 5



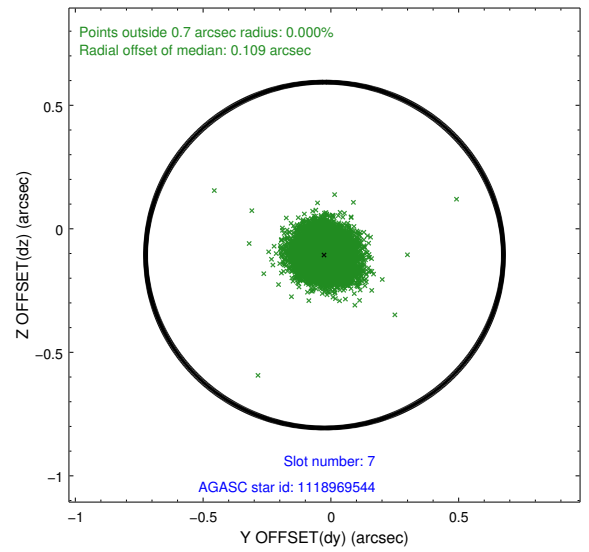
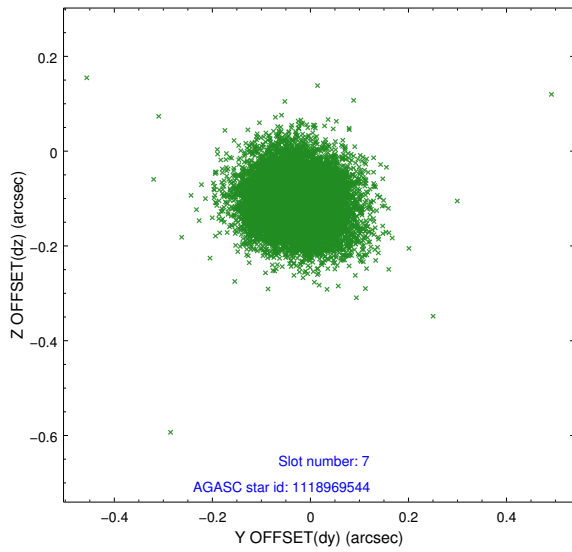
Time (s)



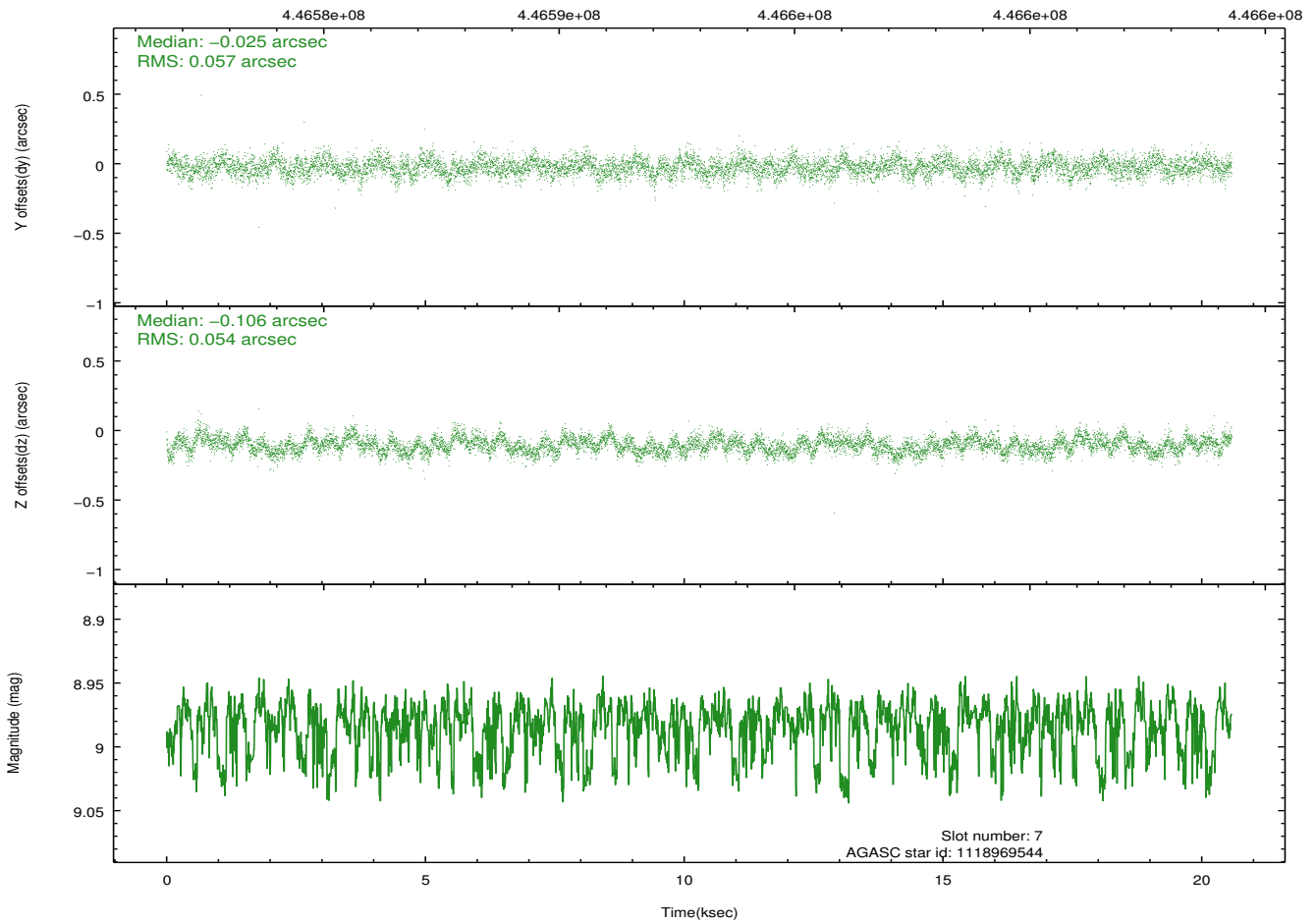
2.4.4 Slot 6



2.4.5 Slot 7

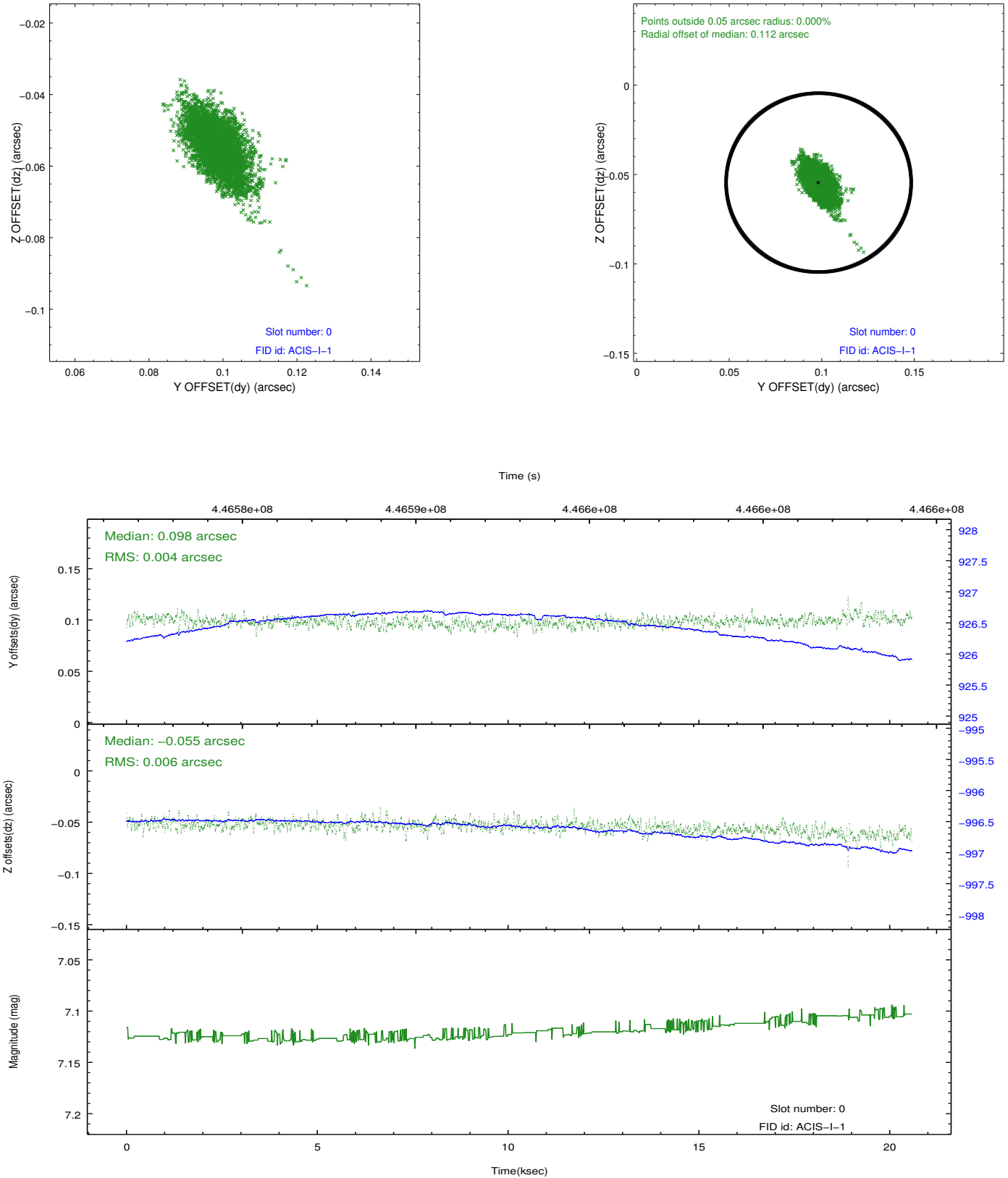


Time (s)

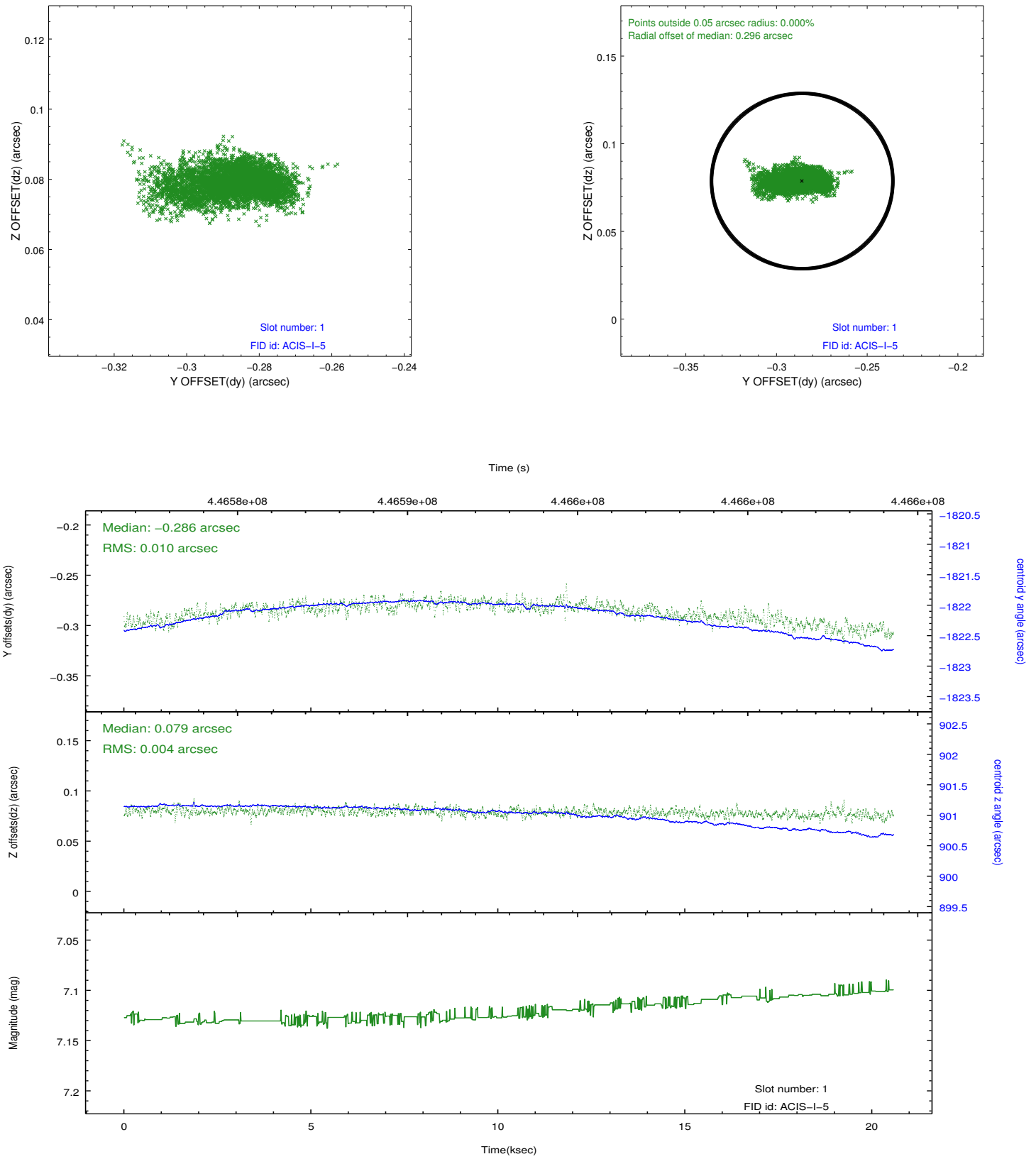


2.5 FID Slots

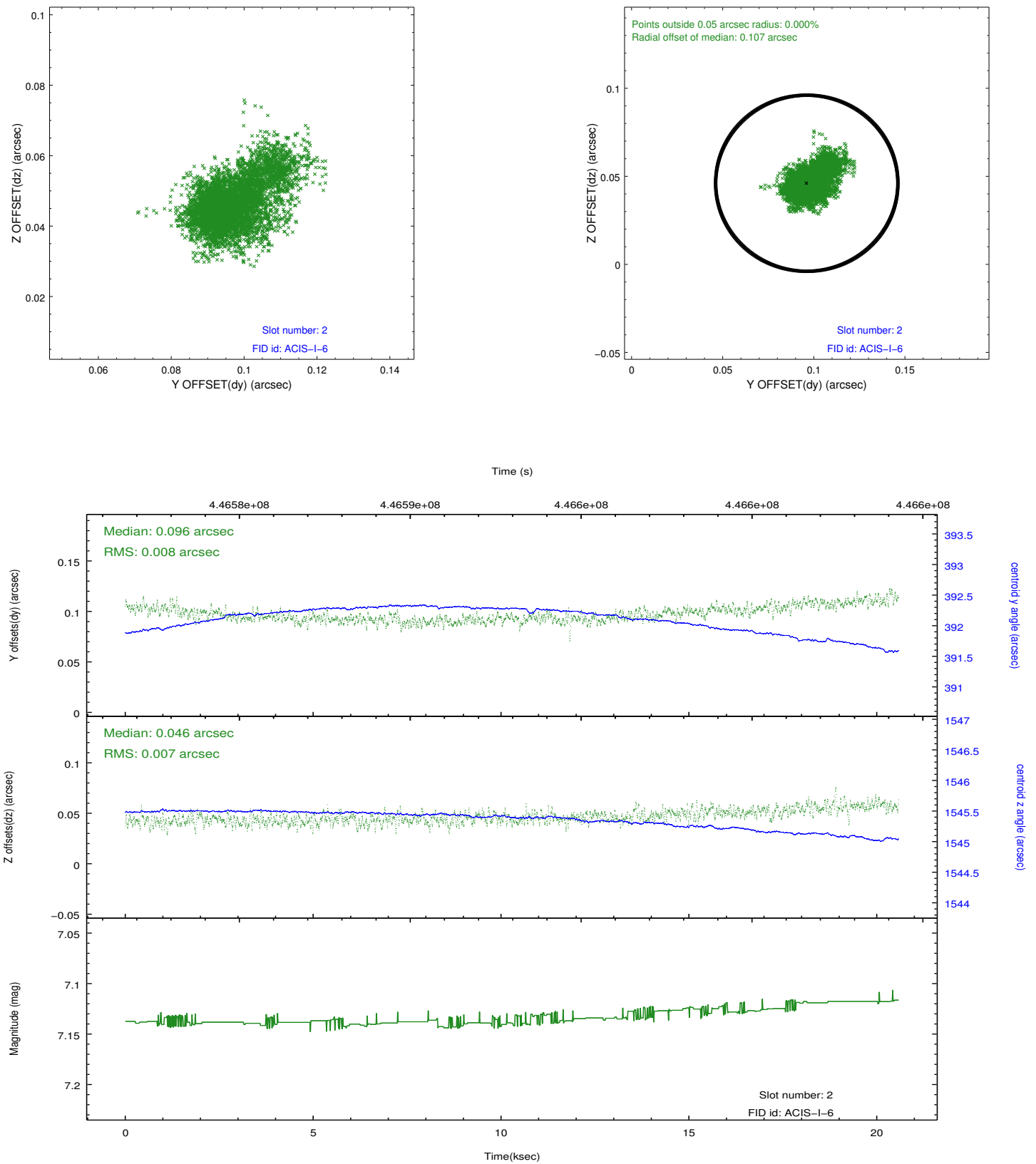
2.5.1 Slot 0



2.5.2 Slot 1



2.5.3 Slot 2



A Summary

A.1 Status

V&V Scientist	Jen Lauer
V&V Date (YYYY-MM-DD)	2012.02.27
V&V Edition	1
V&V Disposition and Status	OK
V&V Charge Time	20.477540858746

A.2 Comments