

V&V Reference Report

L2 ASCDS Version : 8.4.3

Observation 14056 - L2 Version 2
Chandra X-Ray Center

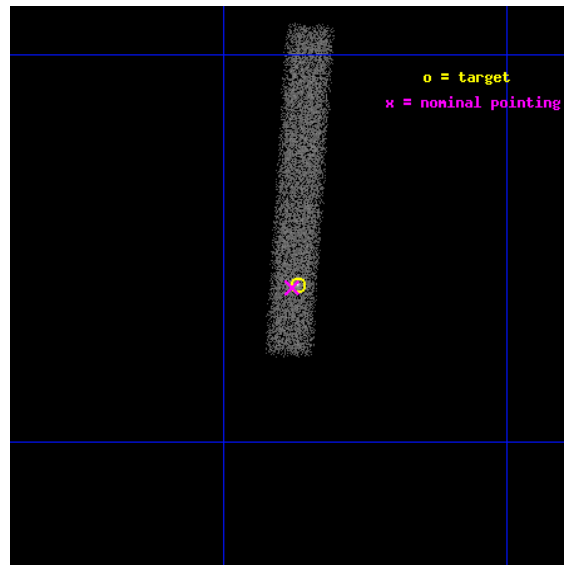
L2 Processing Date : Feb 24 2012

Contents

1	Front	2
2	OBI	3
2.1	OBI	3
2.1.1	Images	3
2.1.2	Bias	3
2.1.3	Parameters	4
2.1.4	Events	4
2.2	Compared Parameters	5
2.3	Aspect	6
2.4	Star Slots	9
2.4.1	Slot 3	9
2.4.2	Slot 4	10
2.4.3	Slot 5	11
2.4.4	Slot 6	12
2.4.5	Slot 7	13
2.5	FID Slots	14
2.5.1	Slot 0	14
2.5.2	Slot 1	15
2.5.3	Slot 2	16
A	Summary	17
A.1	Status	17
A.2	Comments	17

1 Front

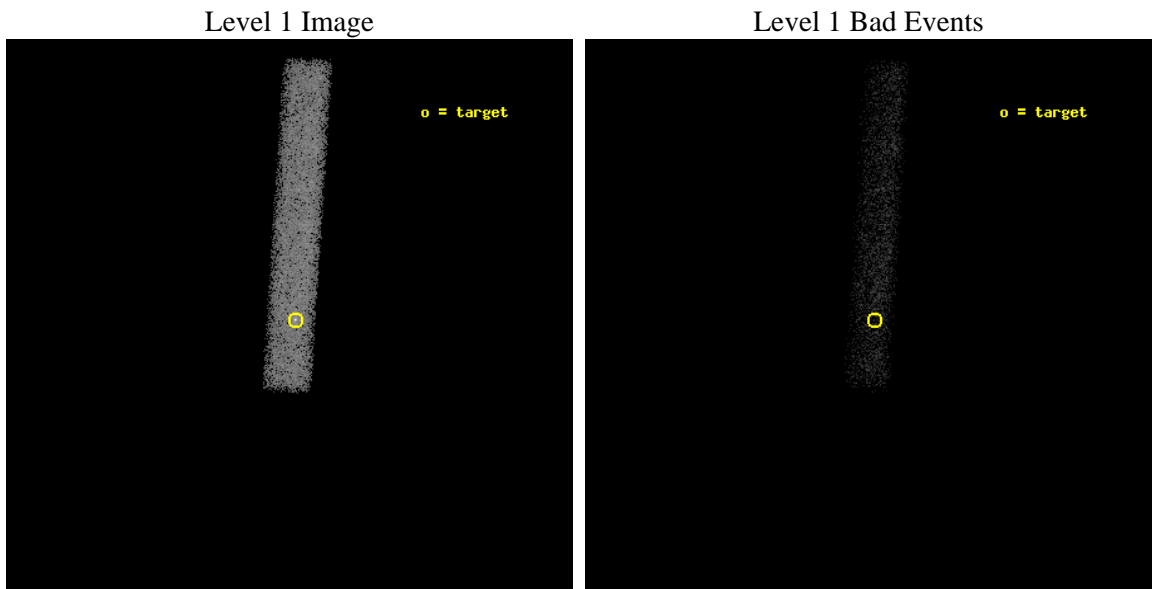
seq_num	501641	Sequence number
obs_id	14056	Observation id
title	PROMPT STUDY OF MAGNETAR OUTBURSTS WITH CHANDRA	Proposal title
observer	Dr. Nanda Rea	Principal investigator
object	Swift J1834.9-0846	Source name
dtycycle	0	
cycle	P	events from which exps? Prim/Second/Both
ra_targ	278.717167	Observer's specified target RA [deg]
dec_targ	-8.765547	Observer's specified target Dec [deg]
ra_nom	278.71986341985	Nominal RA [deg]
dec_nom	-8.7669896134555	Nominal Dec [deg]
roll_nom	273.75078548317	Nominal Roll [deg]
revision	2	Processing version of data
ontime	27009.854627728	Sum of GTIs [s]
livetime	24496.512450325	Livetime [s]
ontime7	27009.854627728	Sum of GTIs [s]
l2events	13628	Number of level 2 events



2 OBI

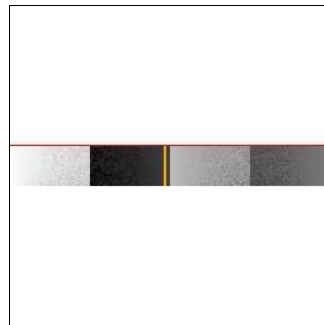
2.1 OBI

2.1.1 Images



2.1.2 Bias

Chip 7



2.1.3 Parameters

obi_num	0	Obi number	sched_exp_time	27000.000000	[s] Scheduled observation exposure time
ascdsver	8.4.3	Processing system revision	ontime	27009.854627728	Sum of GTIs [s]
caldbver	4.4.8	 	ontime7	27009.854627728	Sum of GTIs [s]
date	2012-02-24T04:30:09	Date and time of file creation	l1events	27631	Number of level 1 events
revision	2	Processing version of data			

2.1.4 Events

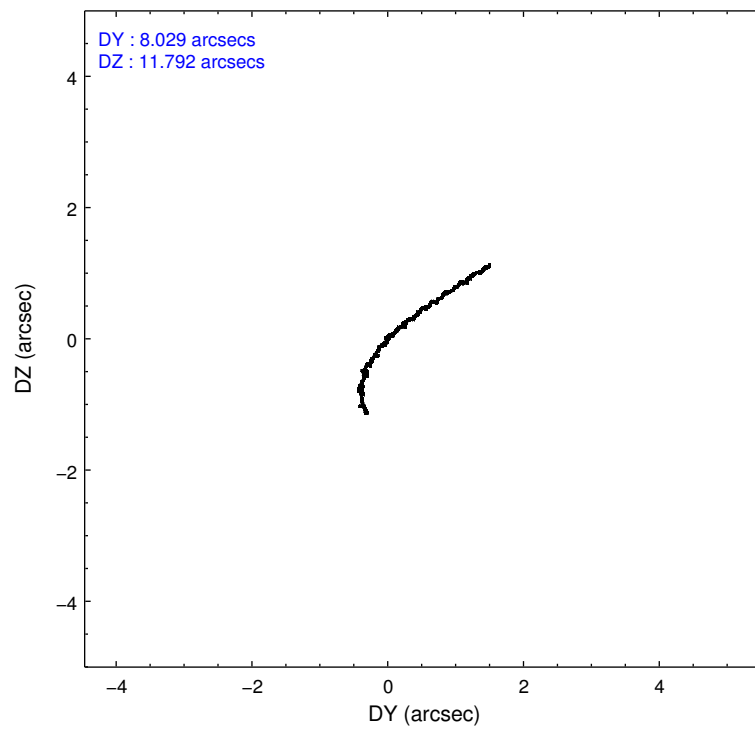
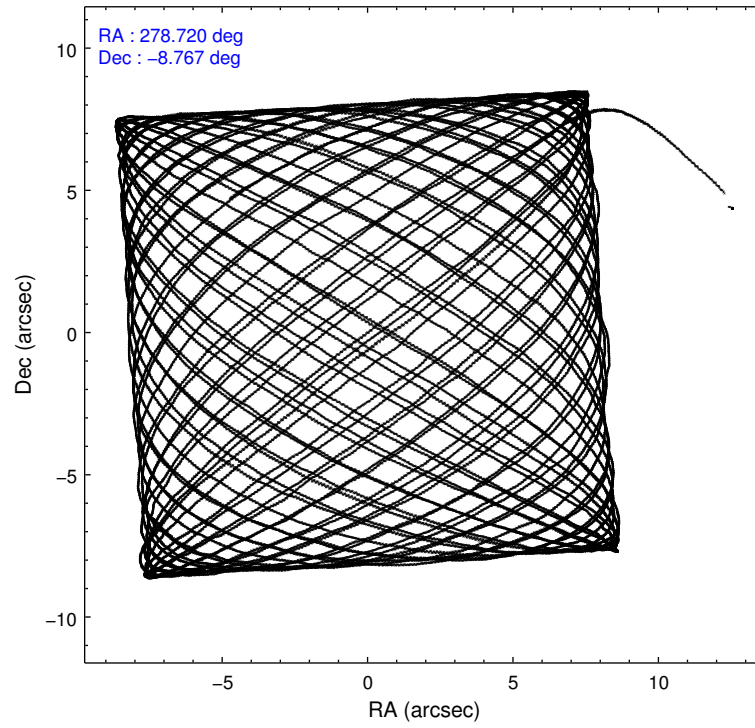
	ccd 7
level 1 events	27631
rejected events	13424
rejected %	48%

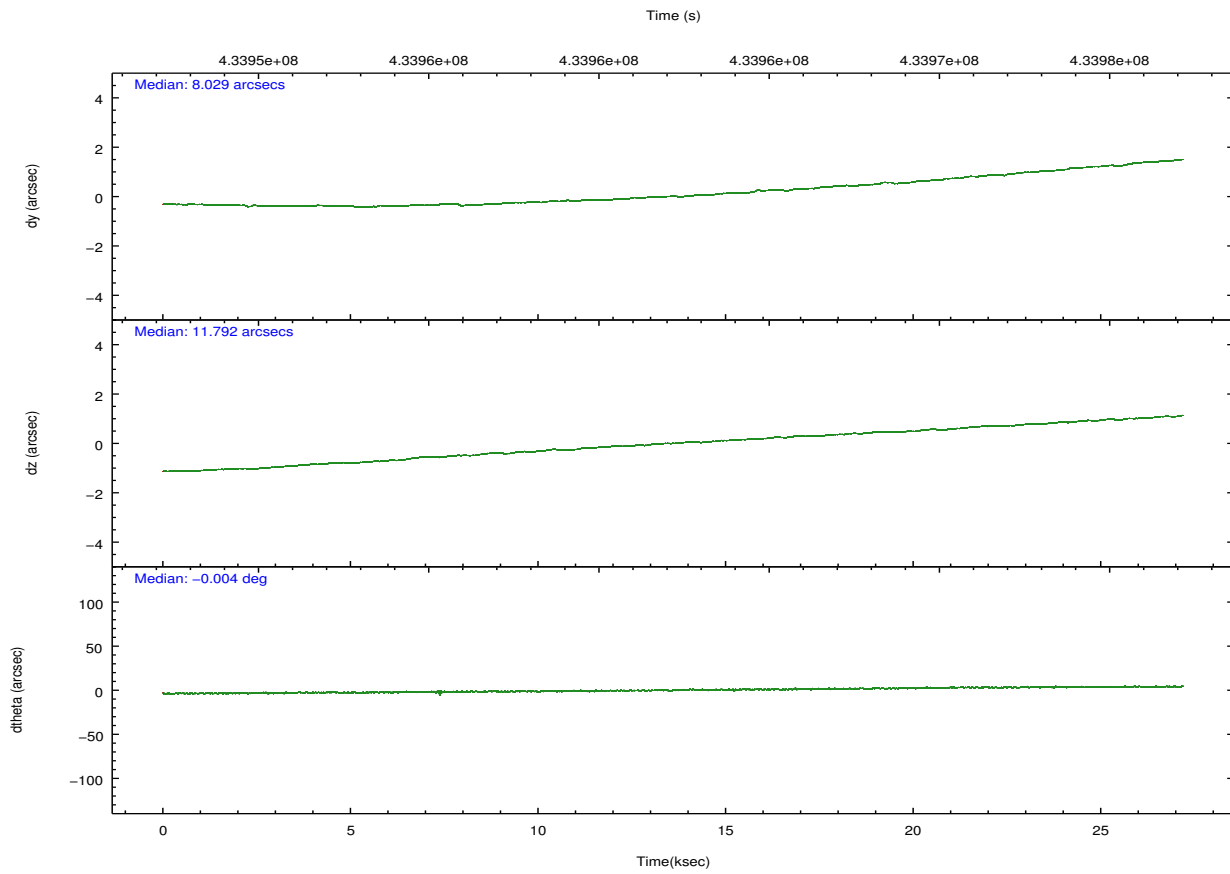
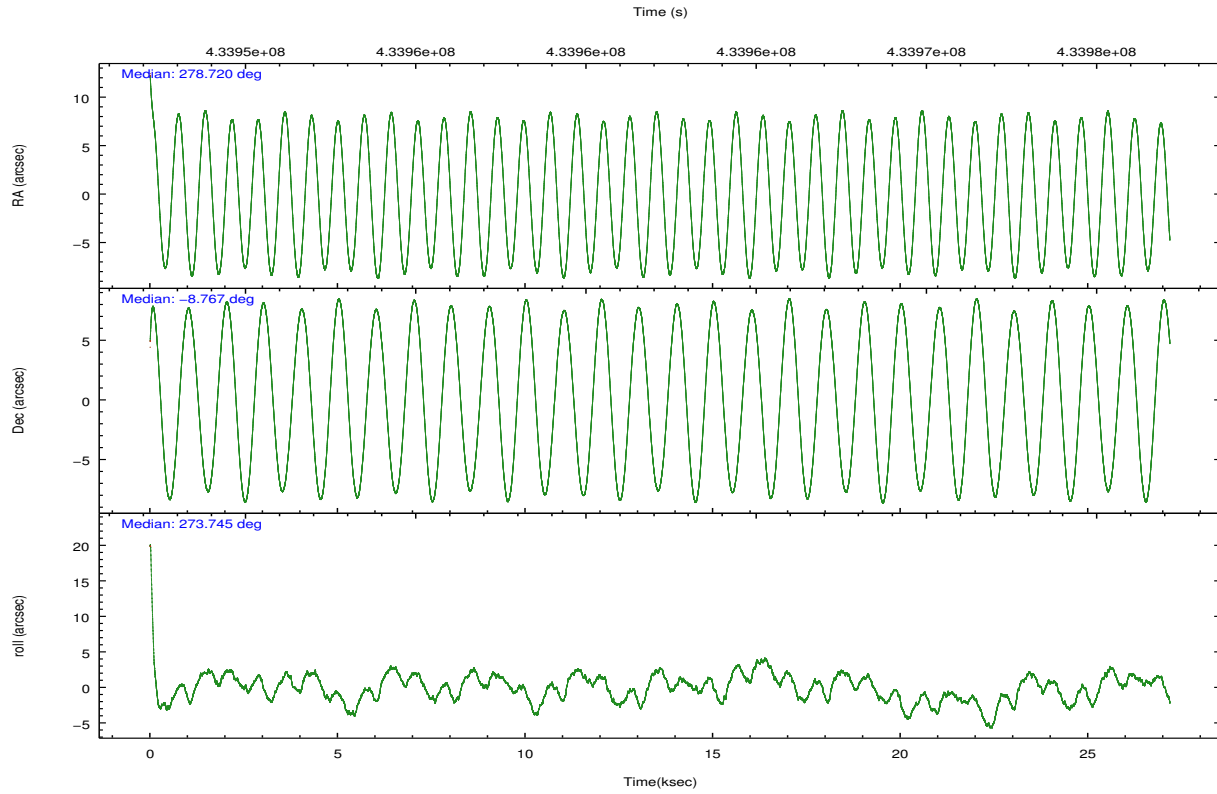
	ccd 7
grade 0 events	1522
	5%
grade 1 events	40
	0%
grade 2 events	2749
	9%
grade 3 events	1863
	6%
grade 4 events	1799
	6%
grade 5 events	2678
	9%
grade 6 events	6274
	22%
grade 7 events	10706
	38%

2.2 Compared Parameters

Parameter	Planned	Actual	Parameter	Planned	Actual
Instrument	ACIS	ACIS	Obspar format version number	7	7
Detector	ACIS-7	ACIS-7	Obspar file type	PREDICTED	ACTUAL
Grating	NONE	NONE	Obspar update status	NONE	UPDATED
Data mode	VFAINT	VFAINT	Number of optional ACIS chips dropped	0	0
Observation mode	POINTING	POINTING	On-chip summing requested	N	N
[deg] Pointing RA	278.704173	278.7198634198464	Subarray requested	CUSTOM	1/8
[deg] Pointing Dec	-8.744484	-8.766989613455523	Subarray start row	449	449
[deg] Pointing Roll	273.591761	273.750785483173	Subarray row count	128	128
[mm] SIM focus pos	-0.684267	-0.6828225247311905	Alternating exposures requested	N	N
[mm] SIM defocus	0	0.001444936568705701	[s] Primary exposure time	0.000000	0.4
[mm] SIM translation stage pos	-190.132523	-190.1400660498719			
[mm] SIM translation stage offset	0	0.00754346686406393			
[s] Observation start time (MET)	433948768.184000	433947741.14695			
Observation start date	2011-10-02T13:18:22	2011-10-02T13:02:21			
[s] Observation end time (MET)	433975768.184000	433977235.011			
Observation end date	2011-10-02T20:48:22	2011-10-02T21:13:55			
Read mode	TIMED	TIMED			

2.3 Aspect



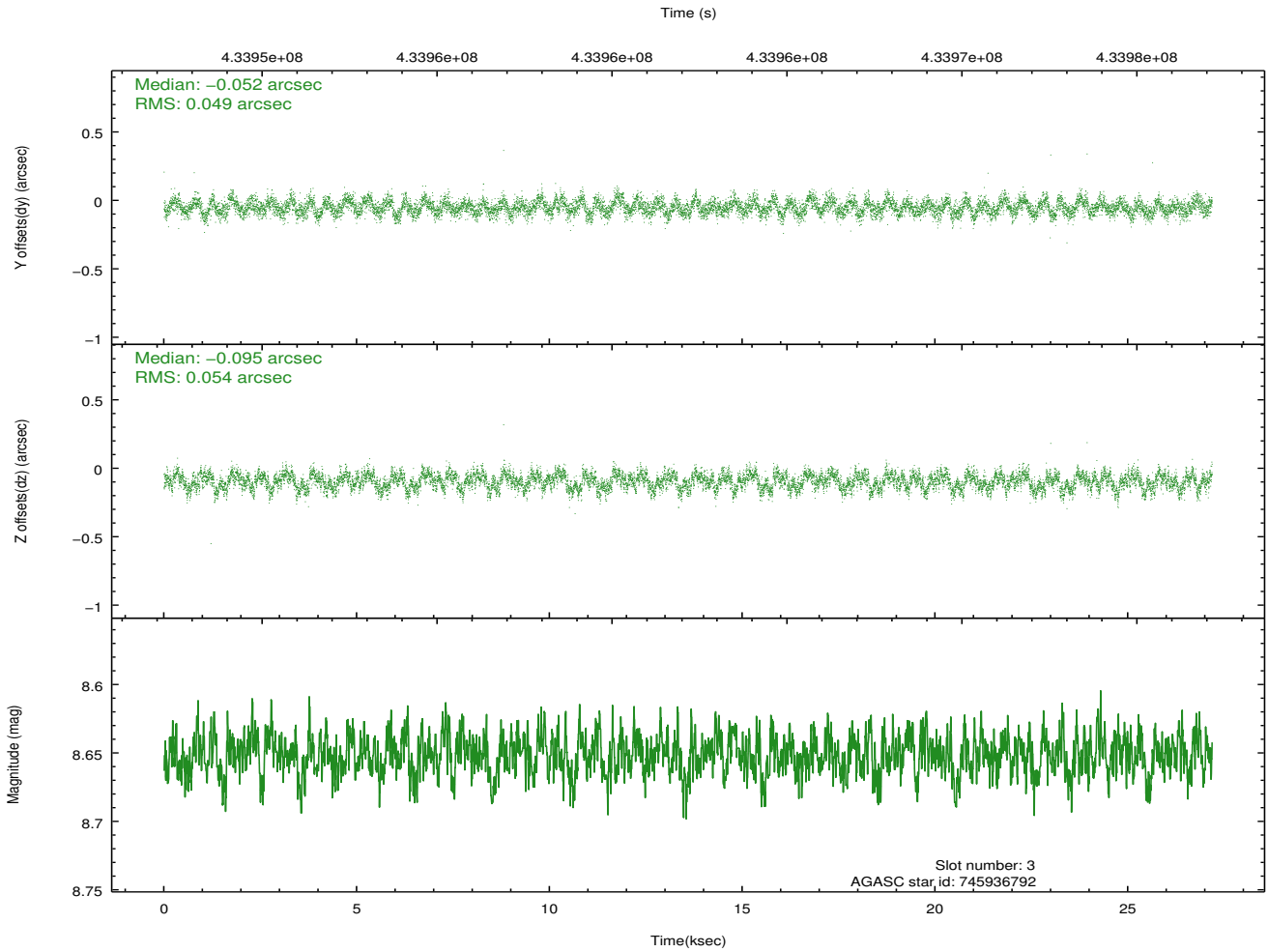
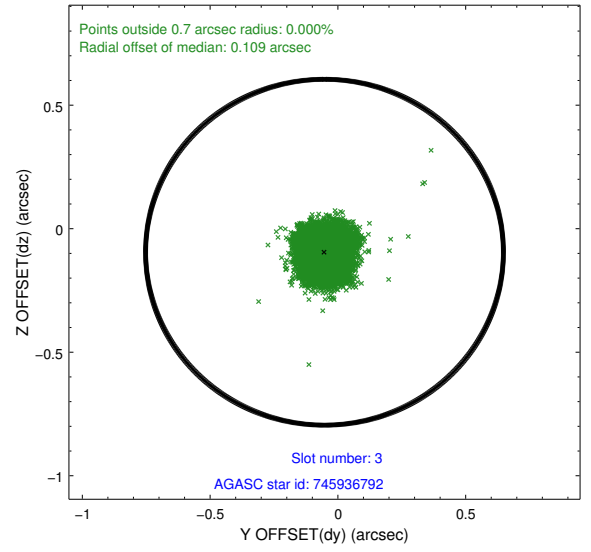
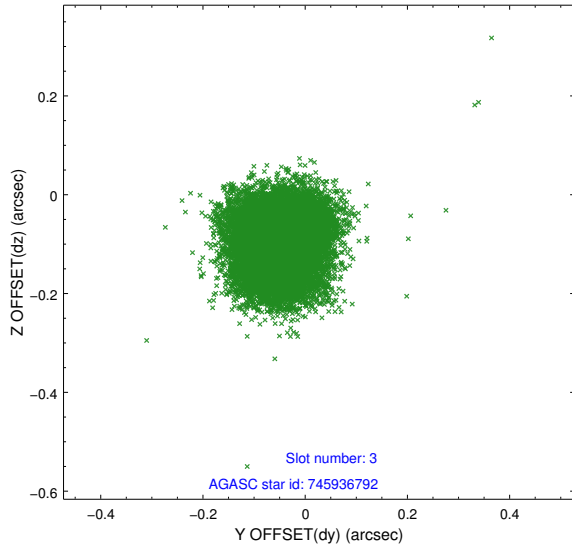


Slot Statistics

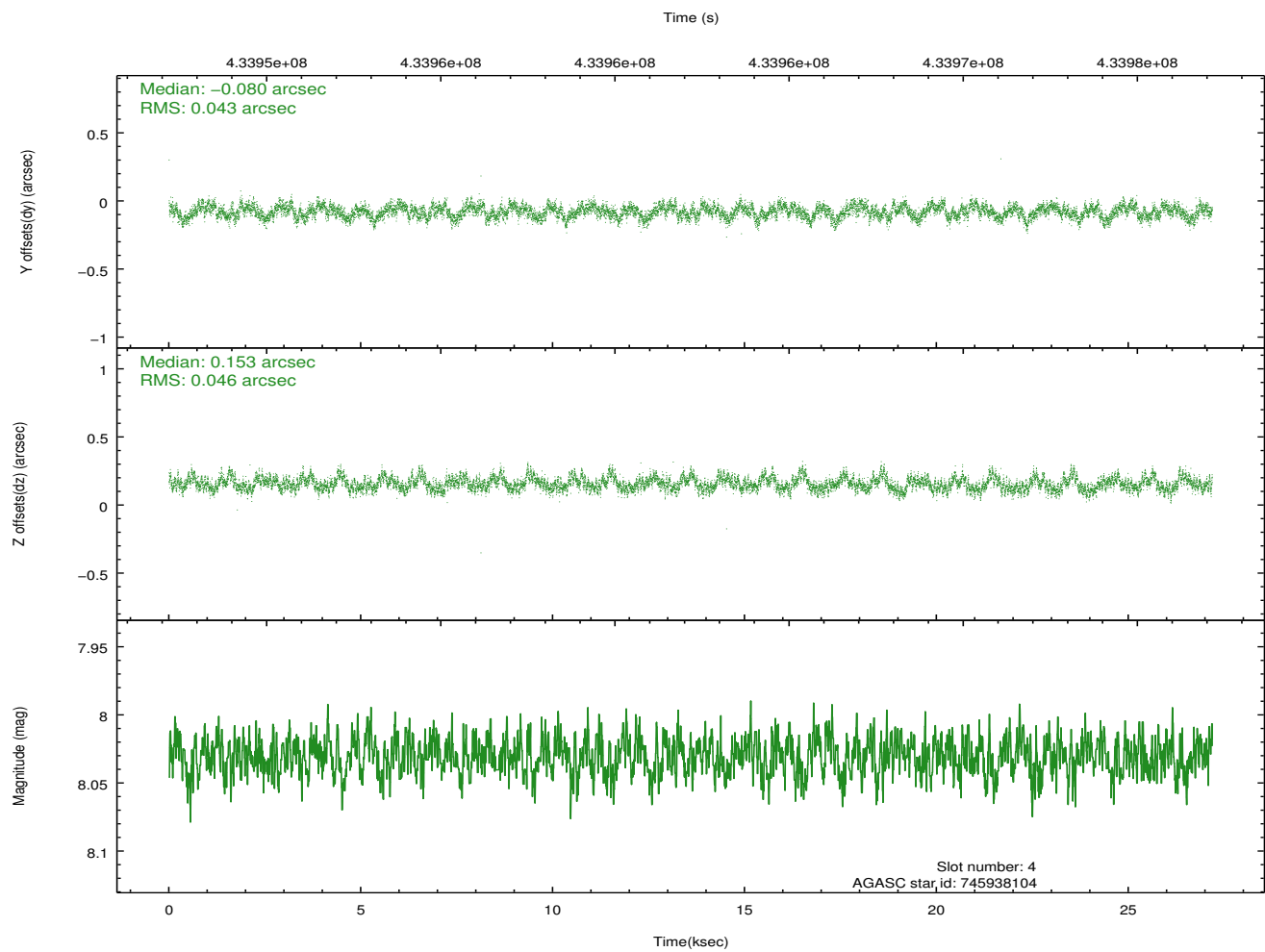
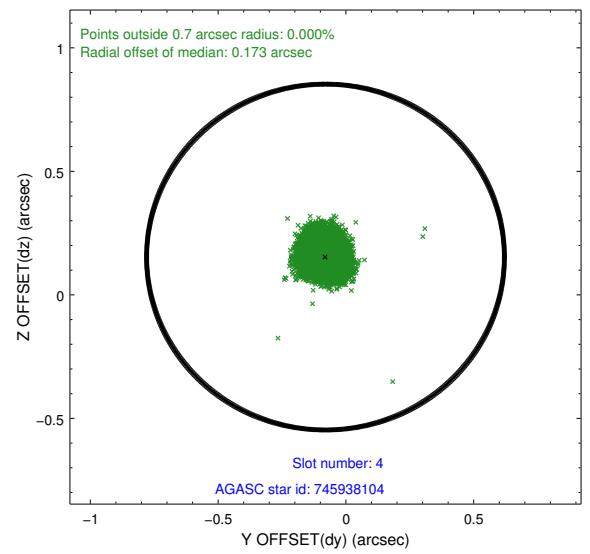
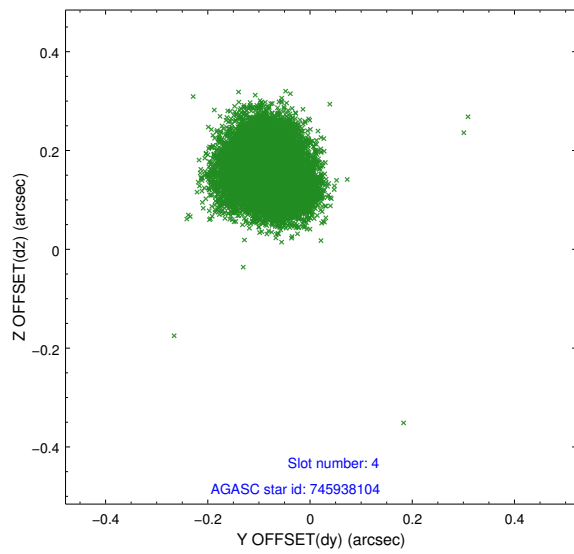
slot	status	id	mag	n_pts	med_dy	med_dz	dr1	dr2	ra	dec	mean_y	mean_z
0	FID	ACIS-S-2	6.99	6631	-0.044	-0.036	0.022	0.030	0.000000	0.000000	-761.07	-1733.09
1	FID	ACIS-S-4	7.07	6631	0.183	0.033	0.015	0.039	0.000000	0.000000	2152.40	175.34
2	FID	ACIS-S-5	7.11	6630	-0.169	0.015	0.034	0.051	0.000000	0.000000	-1813.91	169.13
3	GUIDE	745936792	8.65	13257	-0.052	-0.095	0.078	0.122	278.841392	-9.051493	1133.94	417.57
4	GUIDE	745938104	8.03	13259	-0.080	0.153	0.067	0.106	279.090231	-8.877678	565.47	1340.54
5	GUIDE	745938592	8.61	13256	-0.160	0.064	0.081	0.126	279.317497	-8.670287	-128.11	2195.13
6	GUIDE	745932928	9.34	13158	-0.178	-0.142	0.109	0.180	278.034432	-8.686351	-355.70	-2365.85
7	GUIDE	746460752	8.67	13254	0.469	0.012	0.072	0.114	278.807572	-9.403686	2392.26	217.86

2.4 Star Slots

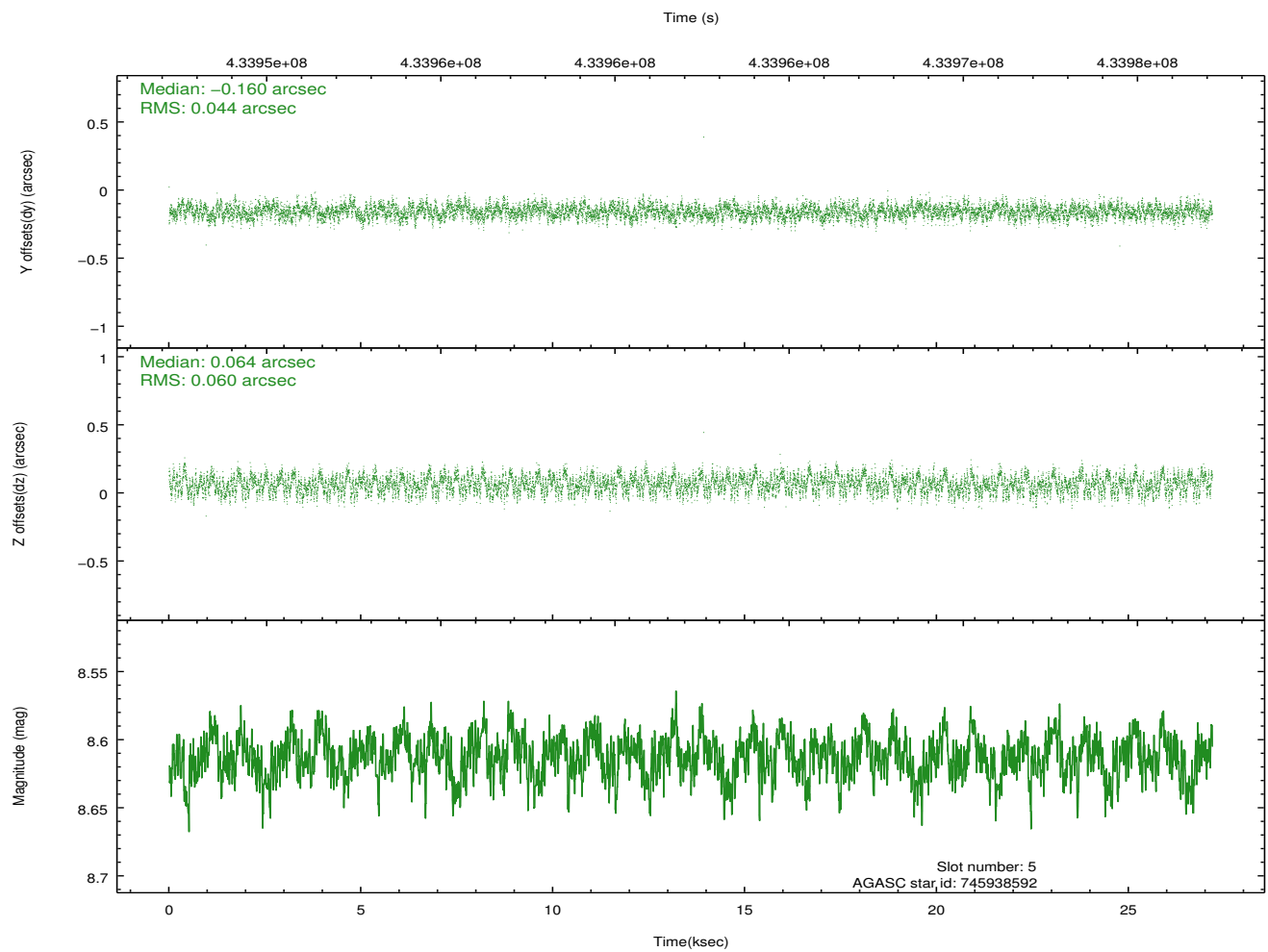
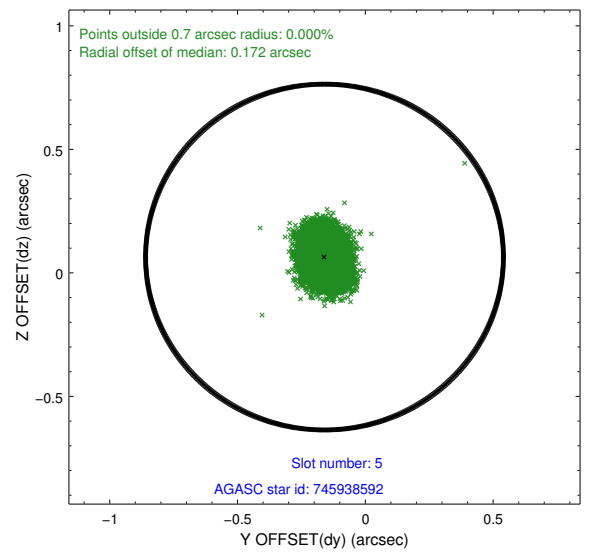
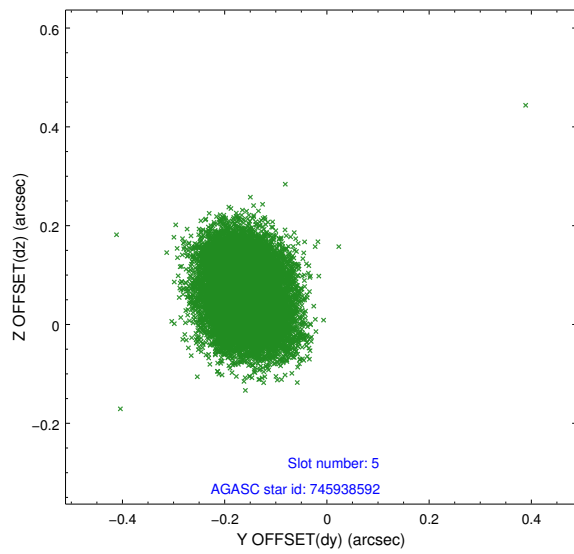
2.4.1 Slot 3



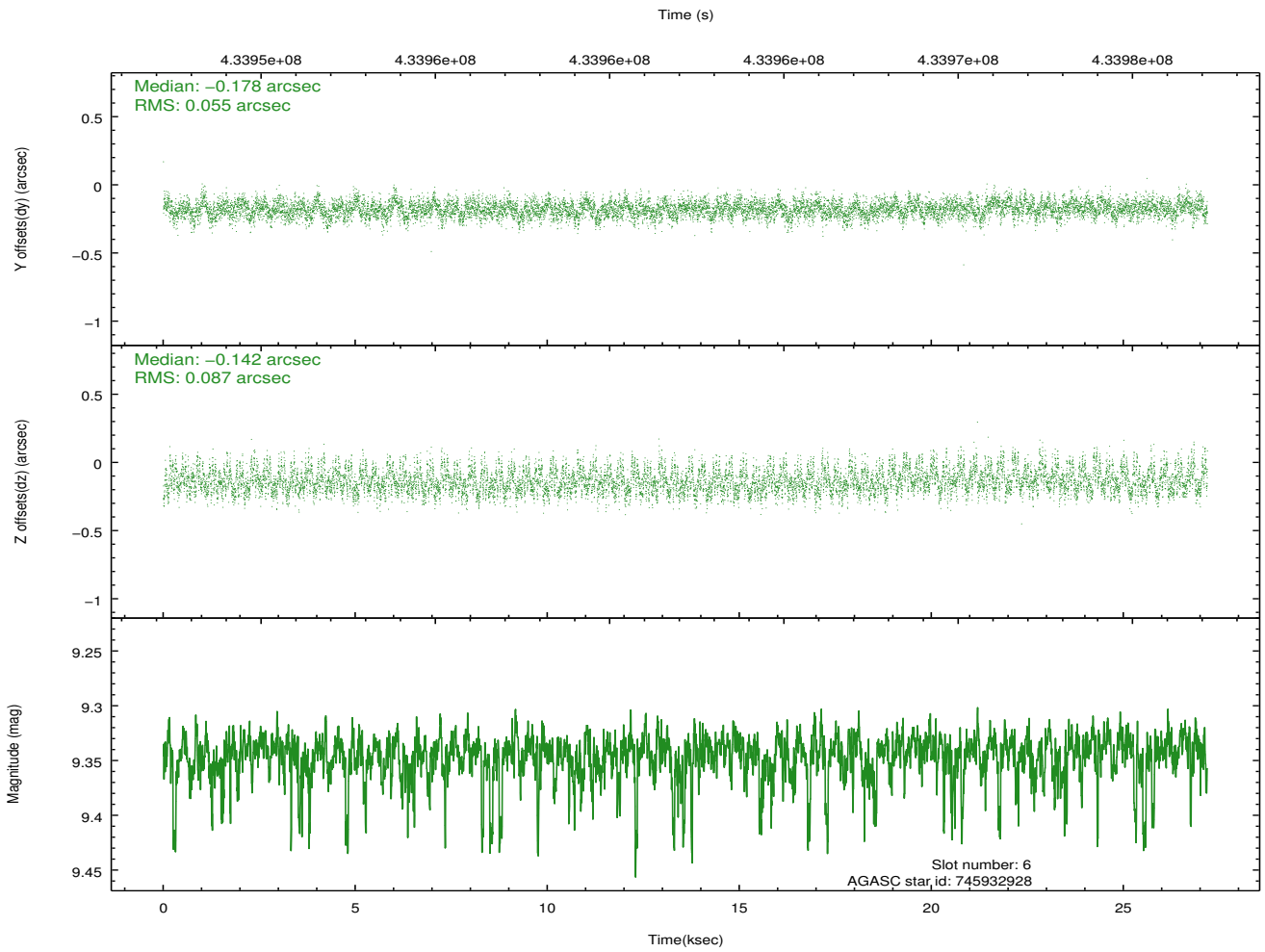
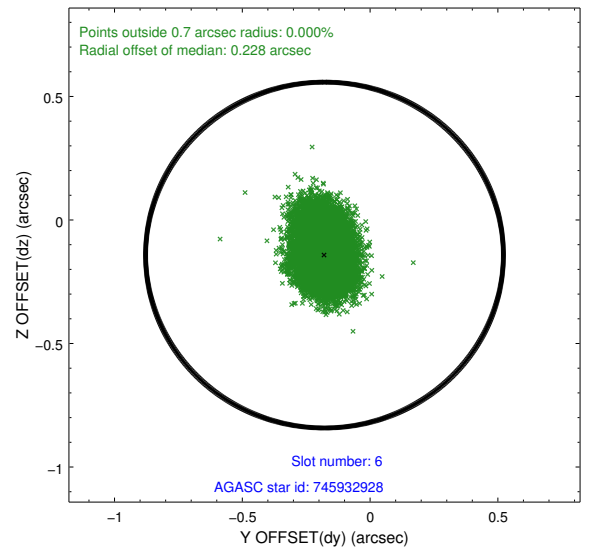
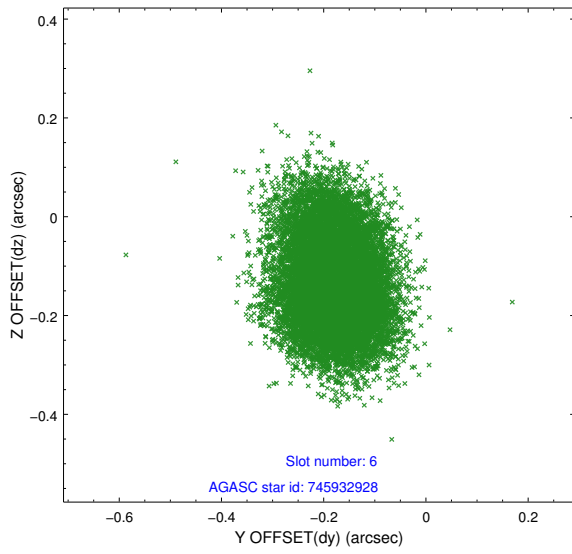
2.4.2 Slot 4



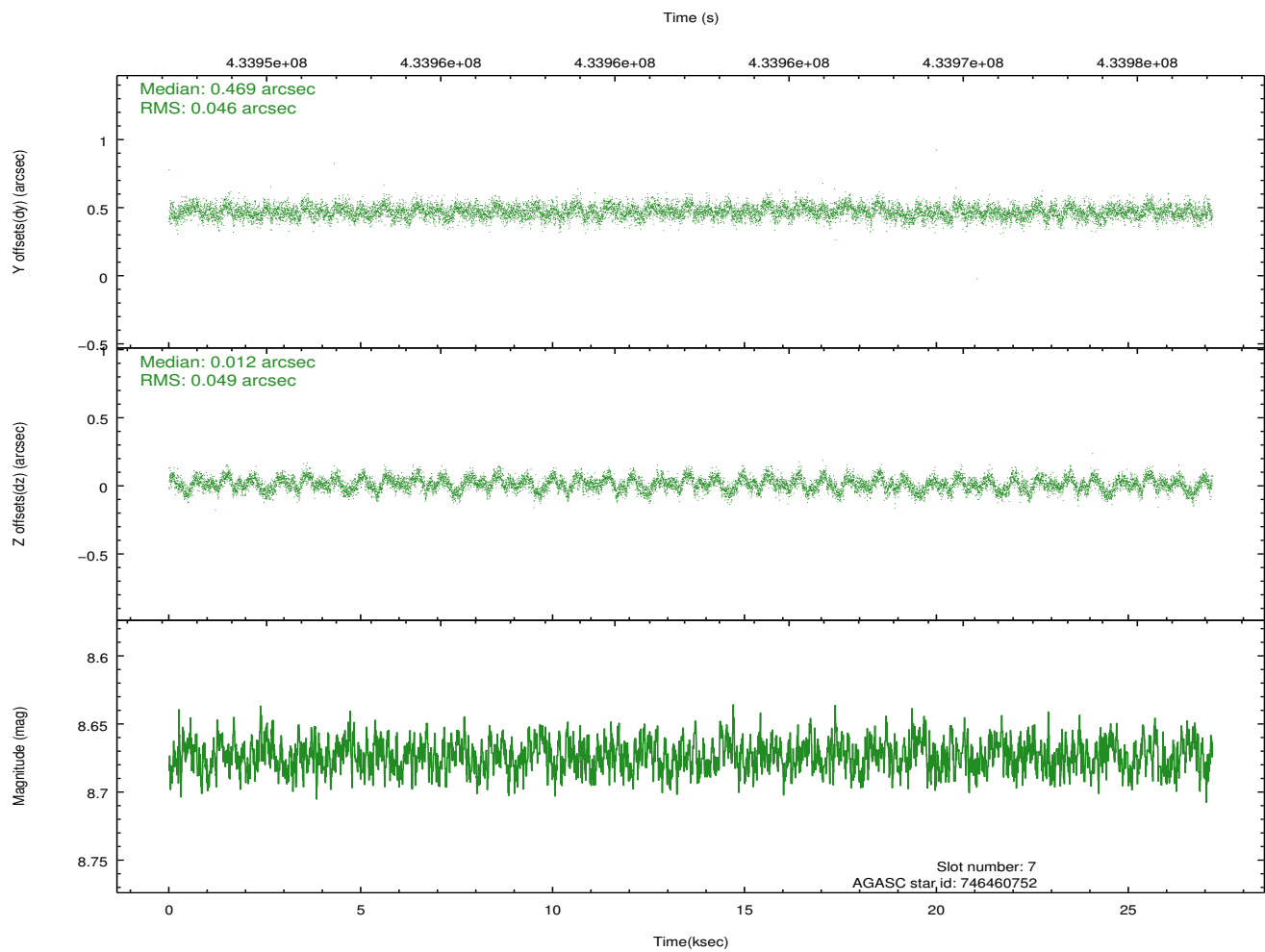
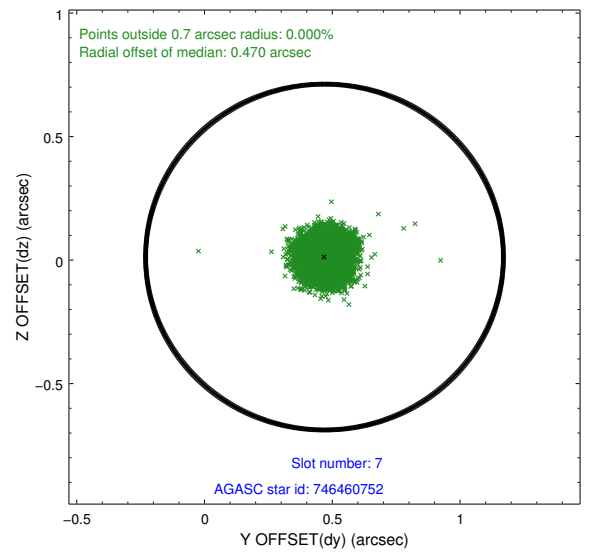
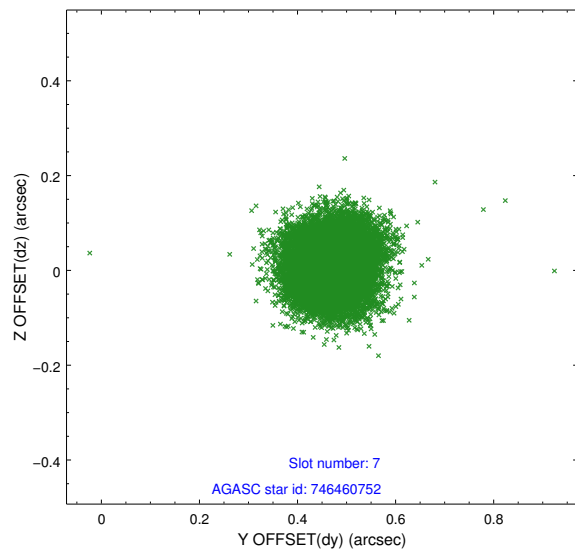
2.4.3 Slot 5



2.4.4 Slot 6

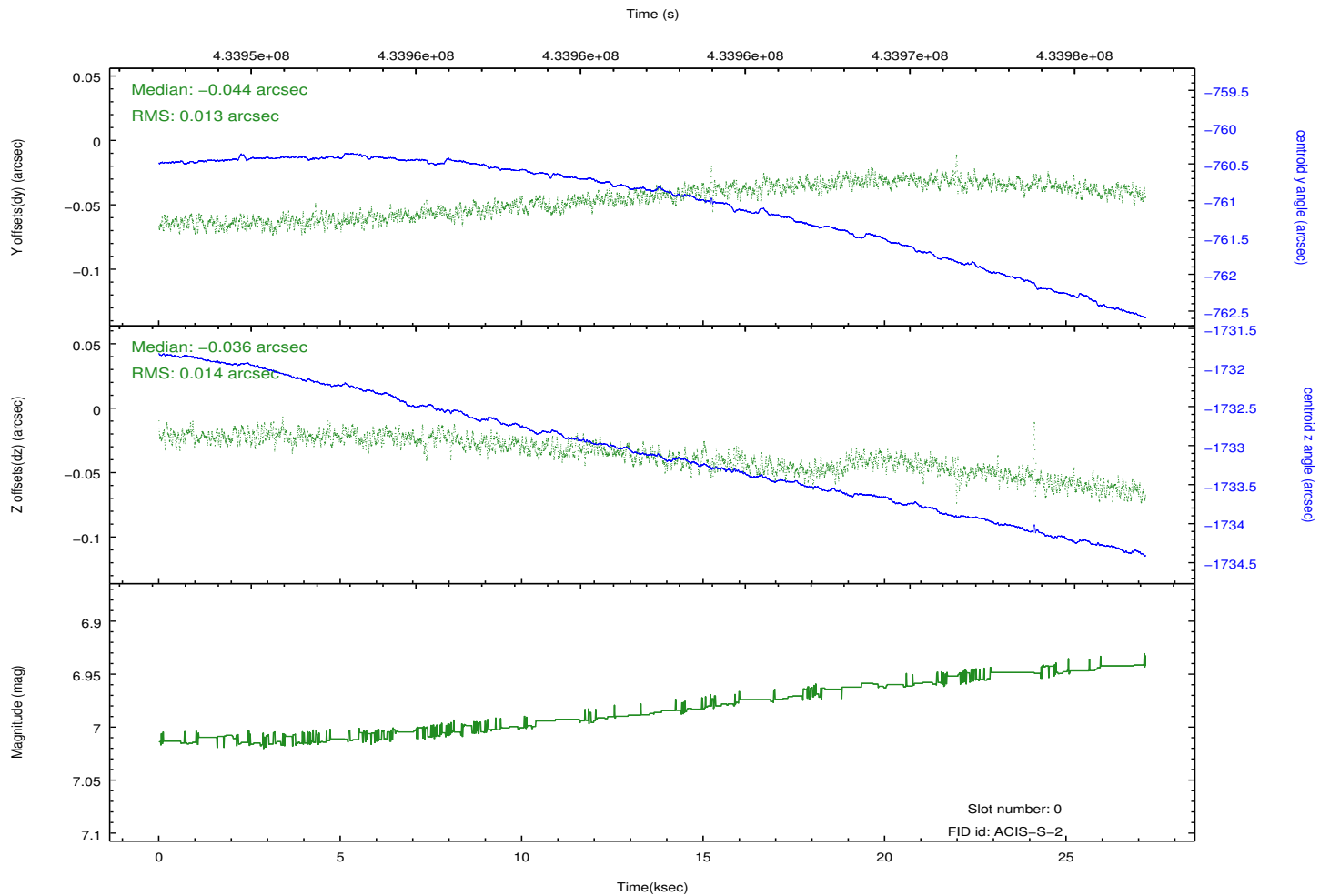
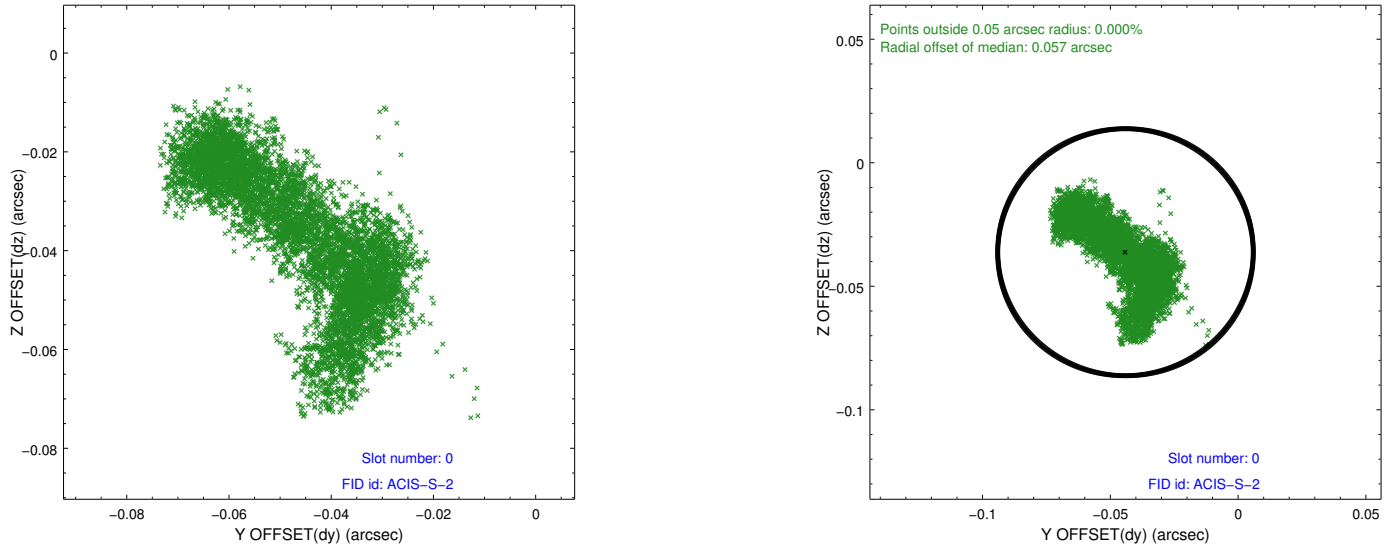


2.4.5 Slot 7

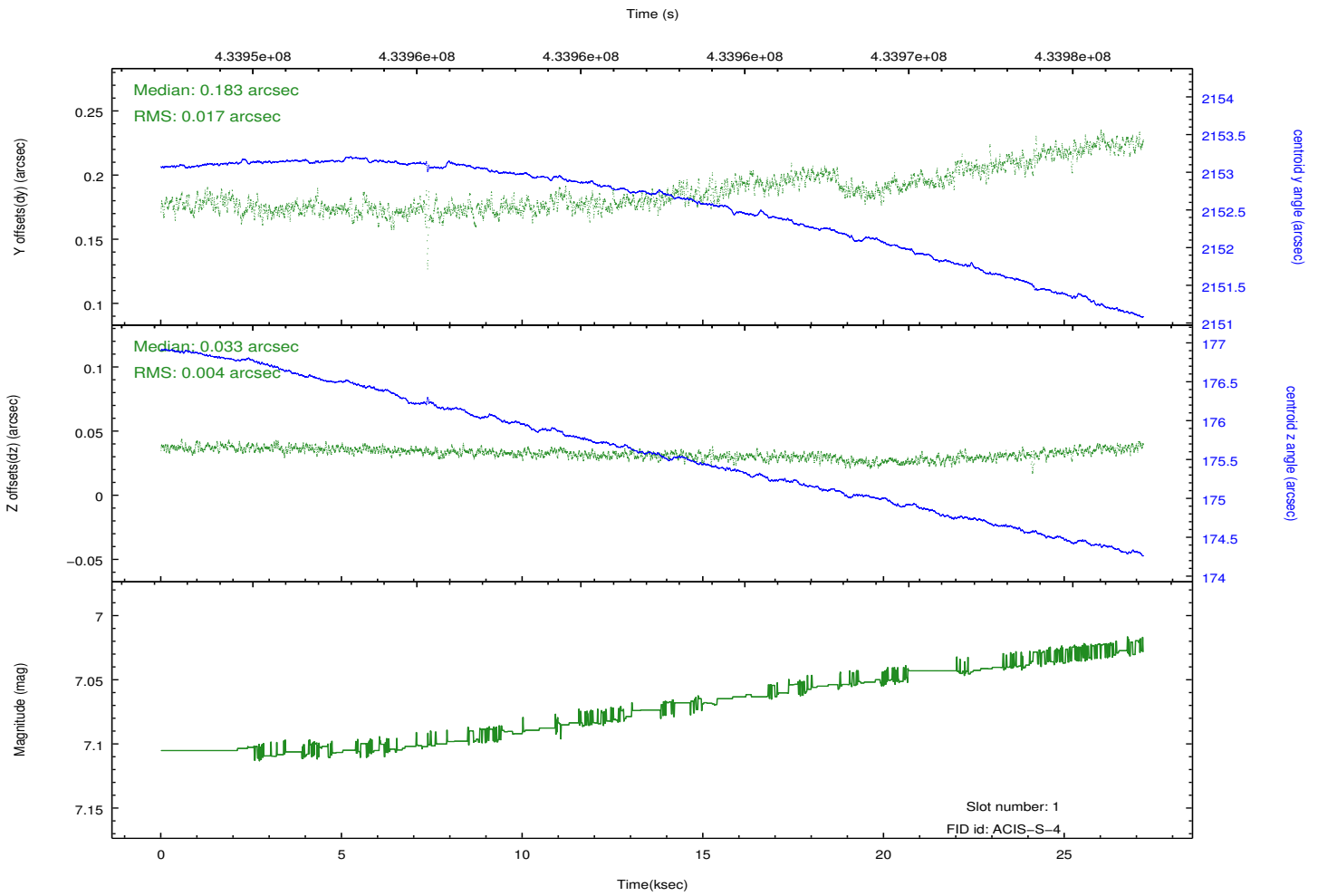
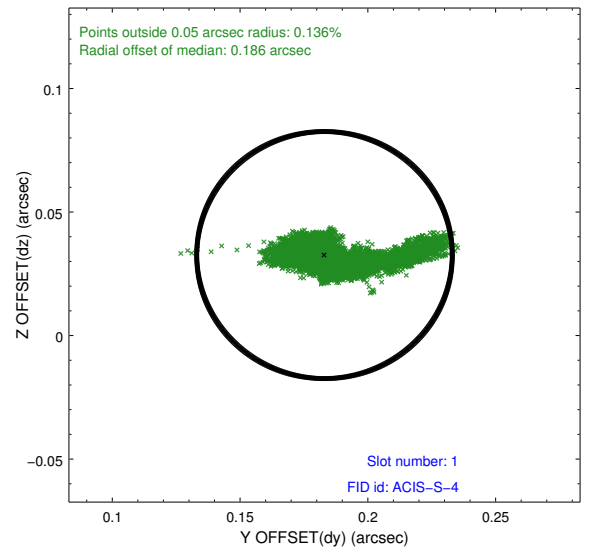
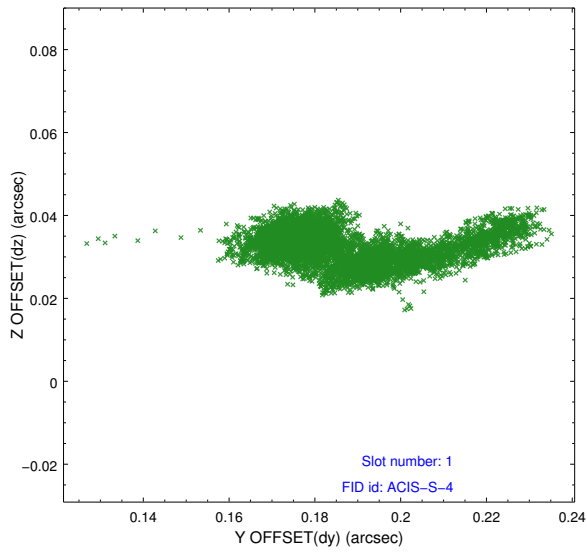


2.5 FID Slots

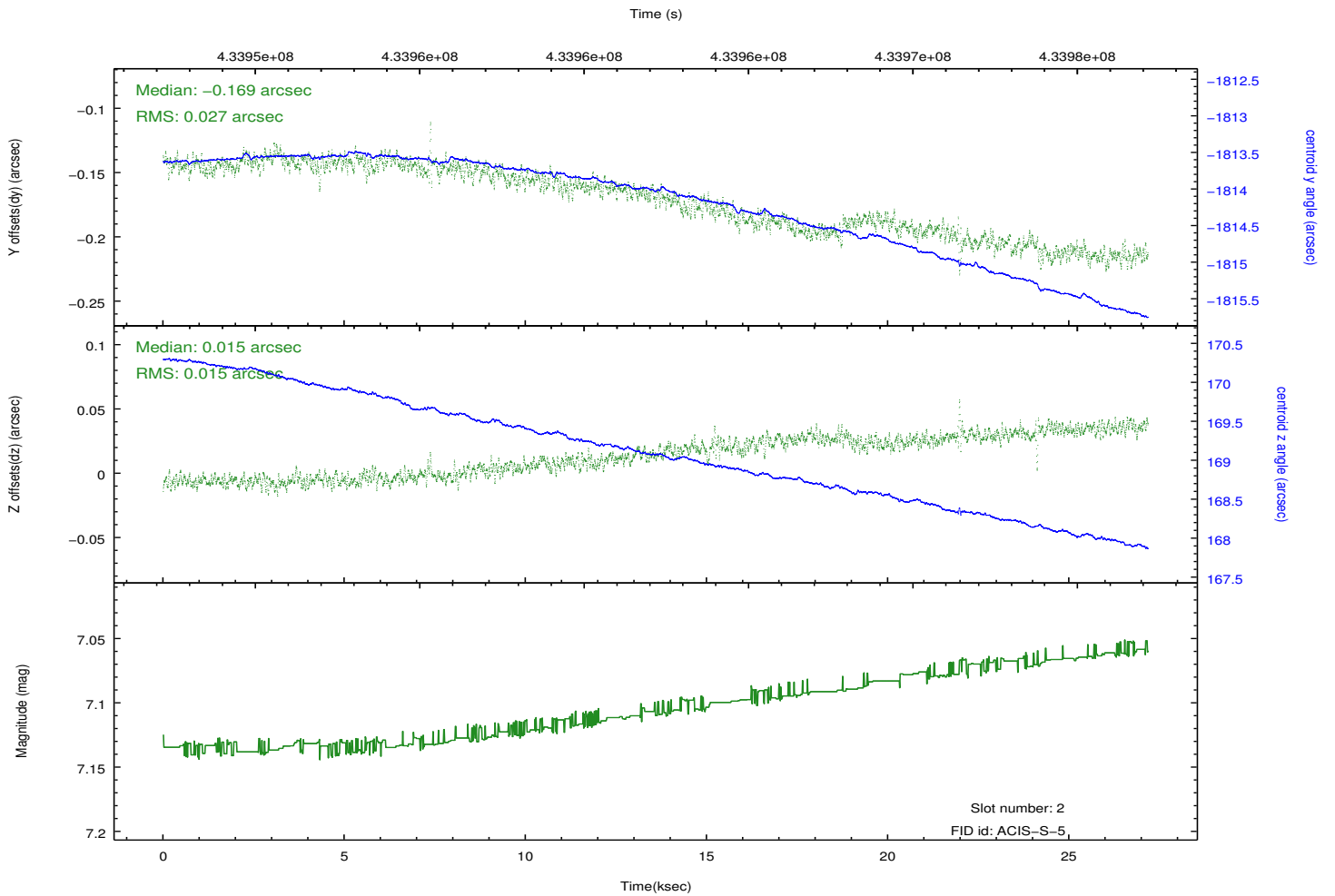
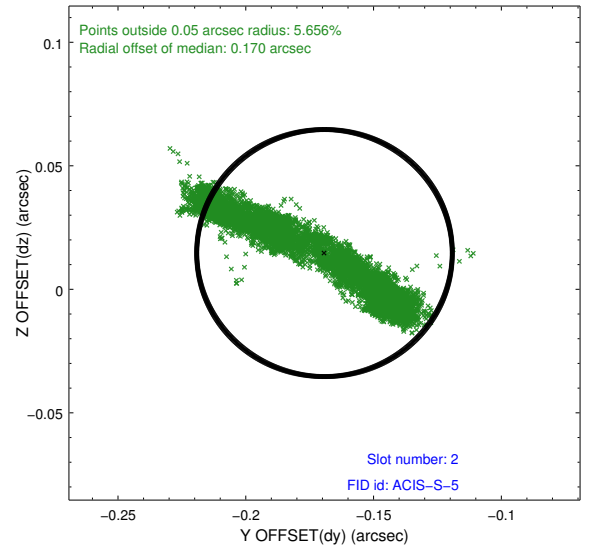
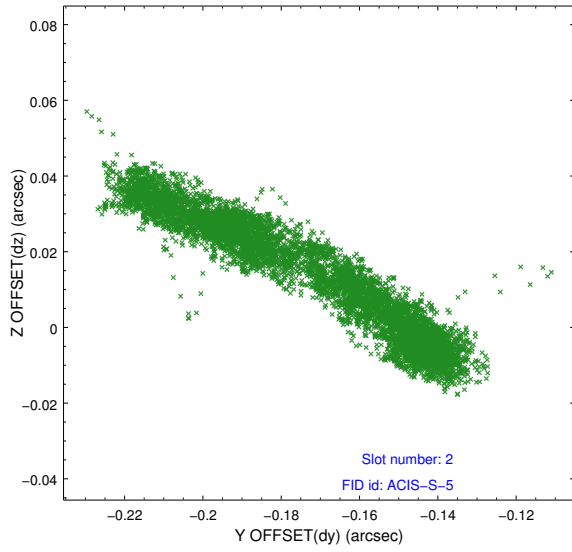
2.5.1 Slot 0



2.5.2 Slot 1



2.5.3 Slot 2



A Summary

A.1 Status

V&V Scientist	Jen Lauer
V&V Date (YYYY-MM-DD)	2012.02.24
V&V Edition	1
V&V Disposition and Status	OK
V&V Charge Time	27.009854629278

A.2 Comments