

V&V Reference Report

L2 ASCDS Version : 8.4.3

Observation 14406 - L2 Version 1
Chandra X-Ray Center

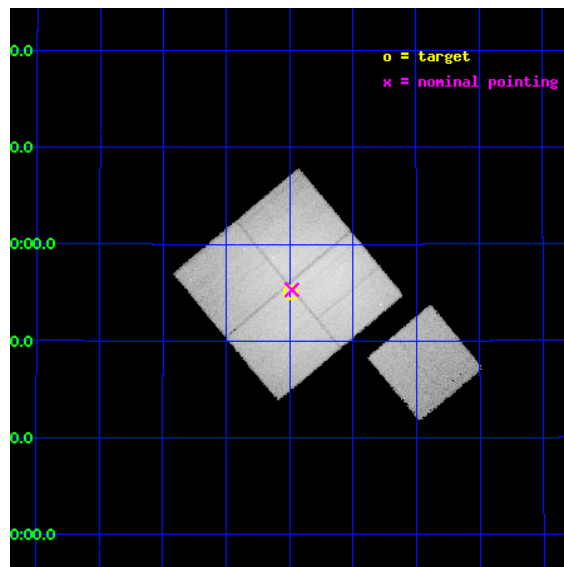
L2 Processing Date : Mar 16 2012

Contents

1	Front	2
2	OBI	3
2.1	OBI	3
2.1.1	Images	3
2.1.2	Bias	3
2.1.3	Parameters	4
2.1.4	Events	4
2.2	Compared Parameters	5
2.3	Aspect	6
2.4	Star Slots	9
2.4.1	Slot 3	9
2.4.2	Slot 4	10
2.4.3	Slot 5	11
2.4.4	Slot 6	12
2.4.5	Slot 7	13
2.5	FID Slots	14
2.5.1	Slot 0	14
2.5.2	Slot 1	15
2.5.3	Slot 2	16
A	Summary	17
A.1	Status	17
A.2	Comments	17

1 Front

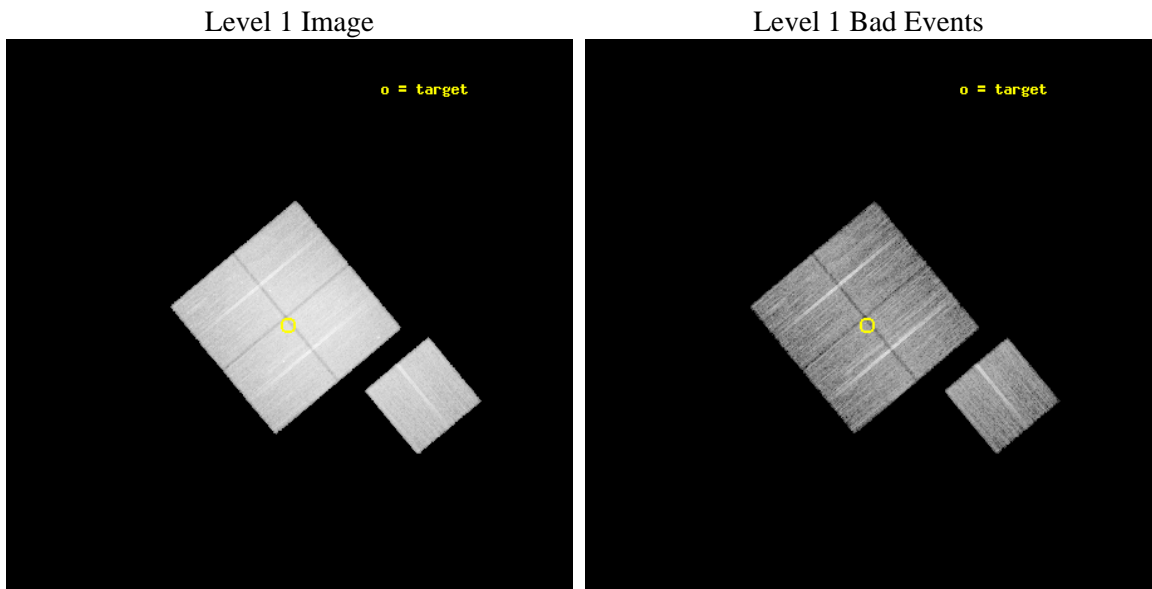
seq_num	801175	Sequence number
obs_id	14406	Observation id
title	Examining incredible structure in the core of the Coma cluster	Pro
observer	Dr Jeremy Sanders	Principal investigator
object	Coma cluster	Source name
dtcycle	0	
cycle	P	events from which exps? Prim/Second/Both
ra_targ	194.99819	Observer's specified target RA [deg]
dec_targ	27.917353	Observer's specified target Dec [deg]
ra_nom	194.99566634563	Nominal RA [deg]
dec_nom	27.921469791878	Nominal Dec [deg]
roll_nom	140.20991591025	Nominal Roll [deg]
revision	1	Processing version of data
ontime	25087.134533167	Sum of GTIs [s]
liveltime	24759.352651611	Livetime [s]
ontime0	25087.011413157	Sum of GTIs [s]
ontime1	25083.911422908	Sum of GTIs [s]
ontime2	25083.952462792	Sum of GTIs [s]
ontime3	25087.134533167	Sum of GTIs [s]
ontime6	25086.970373154	Sum of GTIs [s]
l2events	465901	Number of level 2 events



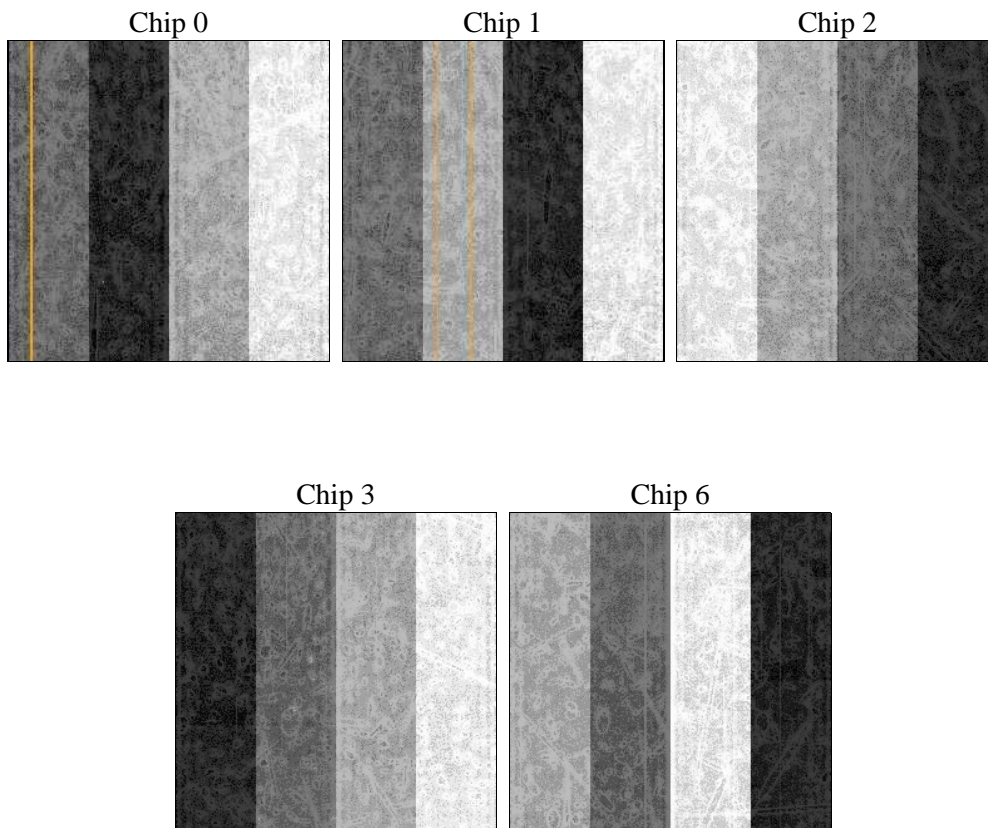
2 OBI

2.1 OBI

2.1.1 Images



2.1.2 Bias



2.1.3 Parameters

obi_num	1	Obi number	sched_exp_time	25000.827000	[s] Scheduled observation exposure time
ascdsver	8.4.3	Processing system revision	ontime	25087.134533167	Sum of GTIs [s]
caldbver	4.4.8	 	ontime0	25087.011413157	Sum of GTIs [s]
date	2012-03-16T18:17:21	Date and time of file creation	ontime1	25083.911422908	Sum of GTIs [s]
revision	1	Processing version of data	ontime2	25083.952462792	Sum of GTIs [s]
			ontime3	25087.134533167	Sum of GTIs [s]
			ontime6	25086.970373154	Sum of GTIs [s]
			l1events	1039011	Number of level 1 events

2.1.4 Events

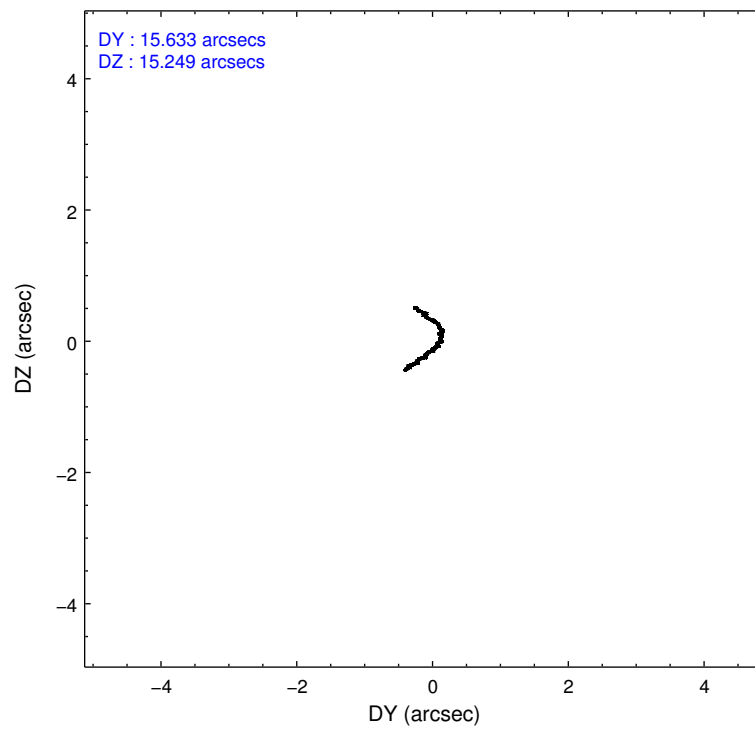
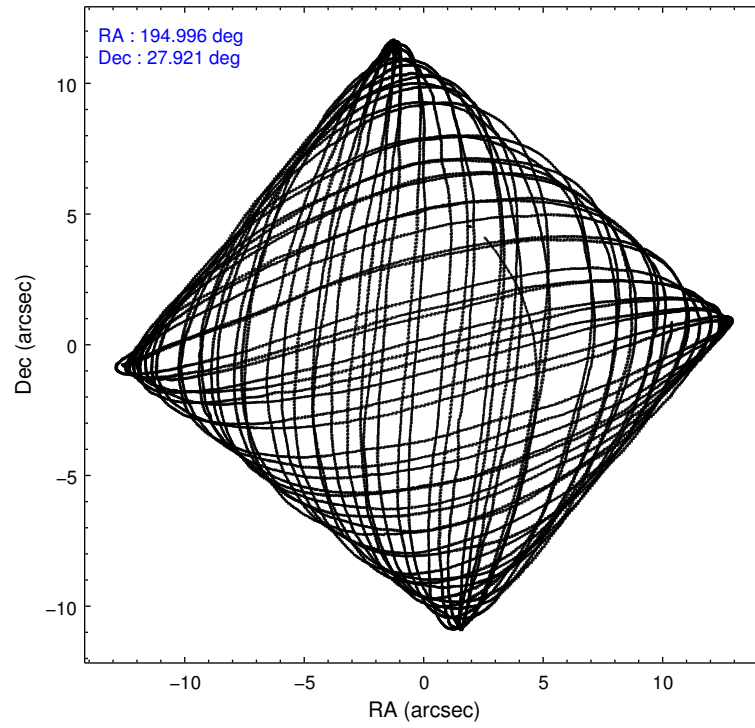
	ccd 0	ccd 1	ccd 2	ccd 3	ccd 6
level 1 events	209207	192361	269813	212190	155440
rejected events	99179	103251	111953	110135	110478
rejected %	47%	53%	41%	51%	71%

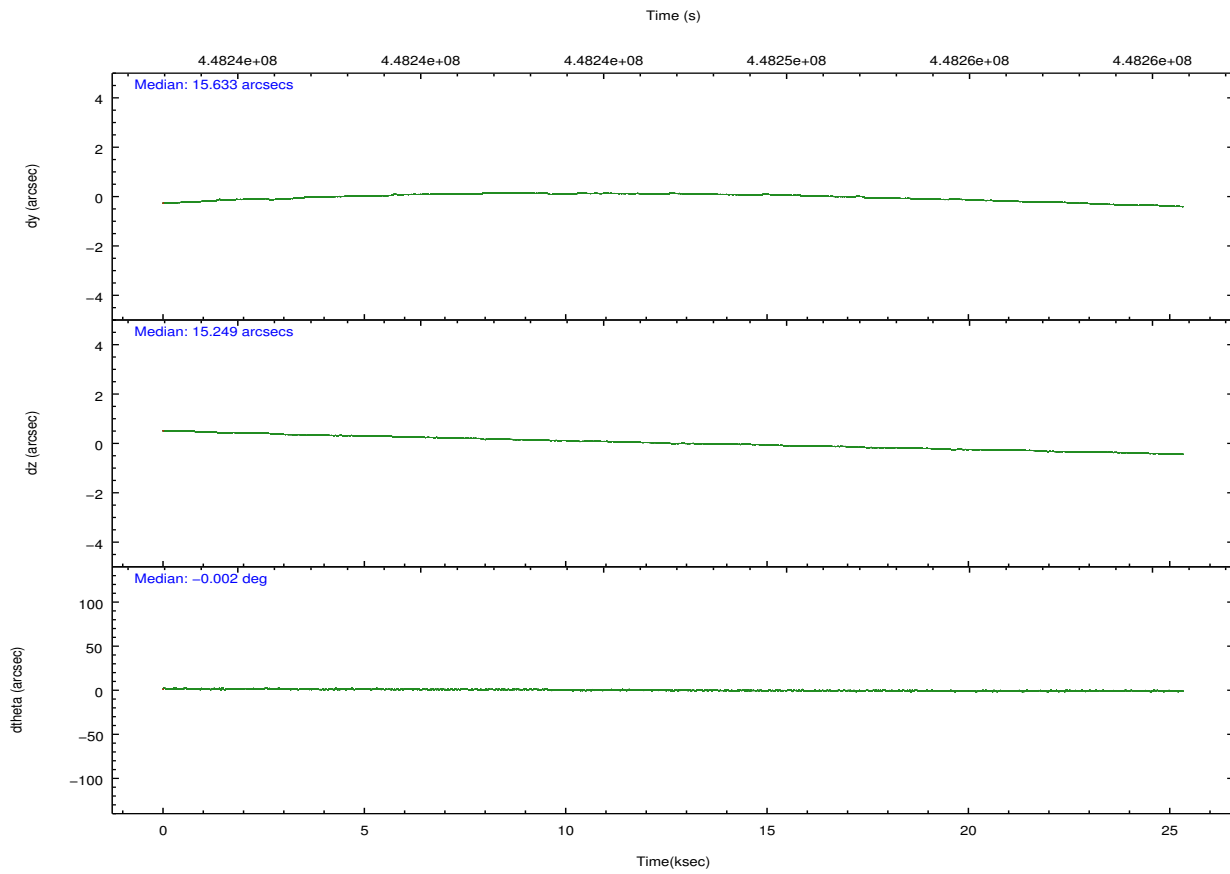
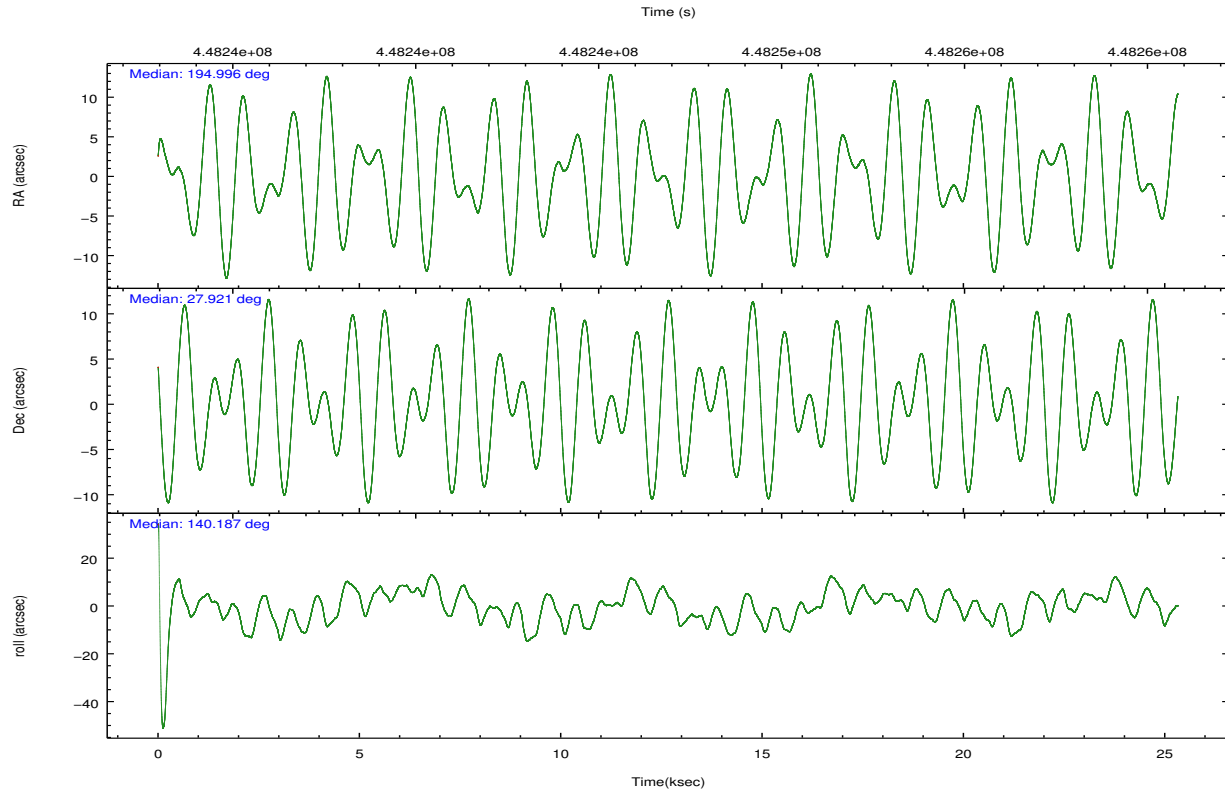
	ccd 0	ccd 1	ccd 2	ccd 3	ccd 6
grade 0 events	81321	63684	120290	76090	29500
	38%	33%	44%	35%	18%
grade 1 events	365	282	524	357	141
	0%	0%	0%	0%	0%
grade 2 events	13728	11894	18317	12026	6379
	6%	6%	6%	5%	4%
grade 3 events	4721	3919	6154	4357	2497
	2%	2%	2%	2%	1%
grade 4 events	4360	3852	6143	4220	2404
	2%	2%	2%	1%	1%
grade 5 events	6037	6192	5788	6585	6373
	2%	3%	2%	3%	4%
grade 6 events	5907	5769	6976	5376	4195
	2%	2%	2%	2%	2%
grade 7 events	92768	96769	105621	103179	103951
	44%	50%	39%	48%	66%

2.2 Compared Parameters

Parameter	Planned	Actual	Parameter	Planned	Actual
Instrument	ACIS	ACIS	Obspar format version number	7	7
Detector	ACIS-01236	ACIS-01236	Obspar file type	PREDICTED	ACTUAL
Grating	NONE	NONE	Obspar update status	NONE	UPDATED
Data mode	VFAINT	VFAINT	CCD I0 on	Y	Y
Observation mode	POINTING	POINTING	CCD I1 on	Y	Y
[deg] Pointing RA	195.026345	194.995666345628	CCD I2 on	Y	Y
[deg] Pointing Dec	27.916922	27.92146979187817	CCD I3 on	Y	Y
[deg] Pointing Roll	139.986824	140.2099159102477	CCD S0 on	N	N
[mm] SIM focus pos	-0.782348	-0.7809083437167272	CCD S1 on	N	N
[mm] SIM defocus	0	0.001439871863259334	CCD S2 on	O2	Y
[mm] SIM translation stage pos	-233.592463	-233.5874344608287	CCD S3 on	O1	N
[mm] SIM translation stage offset	0	-0.005018542100998502	CCD S4 on	N	N
[s] Observation start time (MET)	448234567.184000	448233561.82572	CCD S5 on	N	N
Observation start date	2012-03-15T21:35:01	2012-03-15T21:19:21	Number of optional ACIS chips dropped	1	1
[s] Observation end time (MET)	448259568.184000	448259805.41461	On-chip summing requested	N	N
Observation end date	2012-03-16T04:31:42	2012-03-16T04:36:45	Subarray requested	NONE	NONE
Read mode	TIMED	TIMED	Alternating exposures requested	N	N
			[s] Primary exposure time	0.000000	3.1

2.3 Aspect



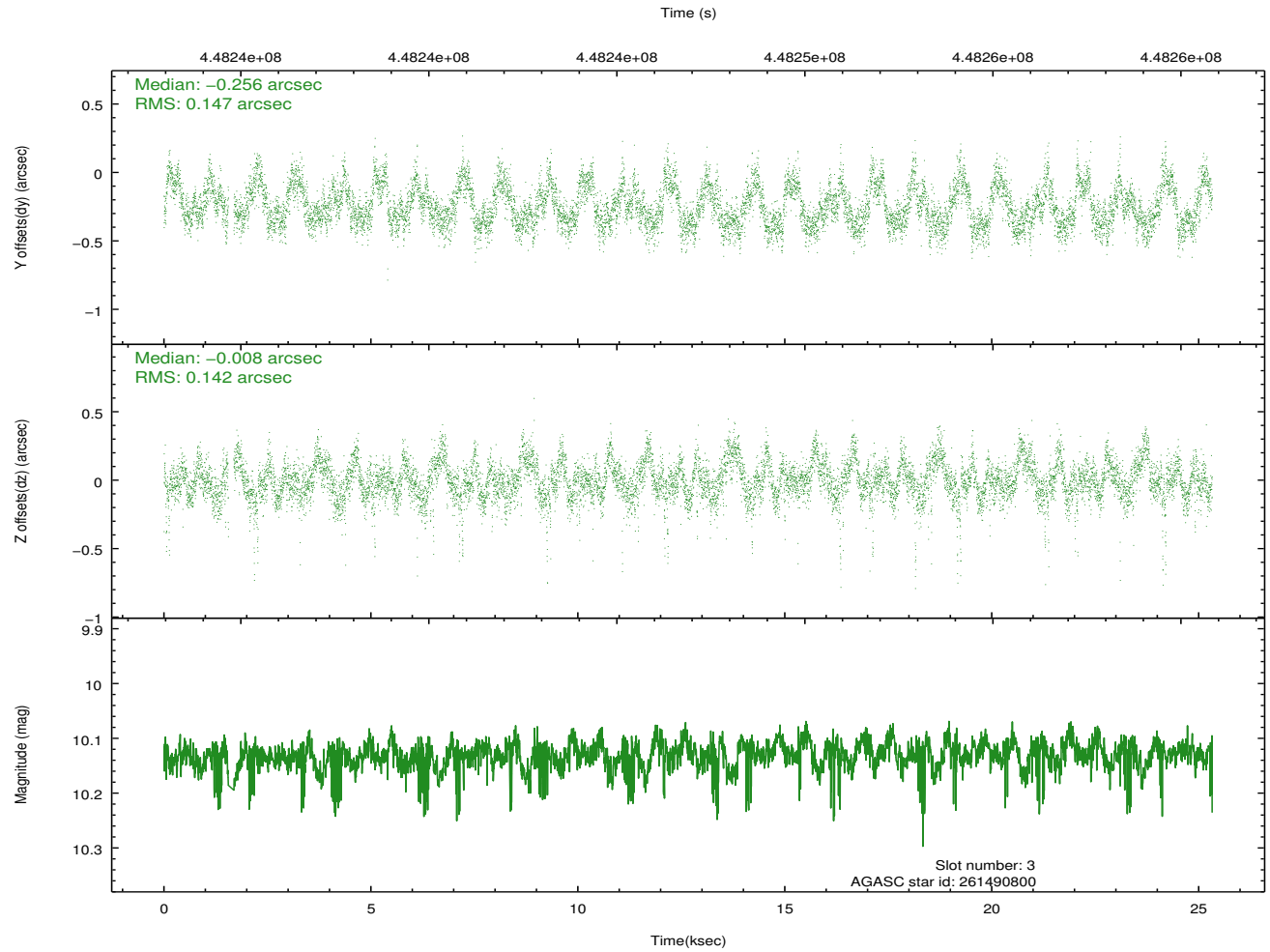
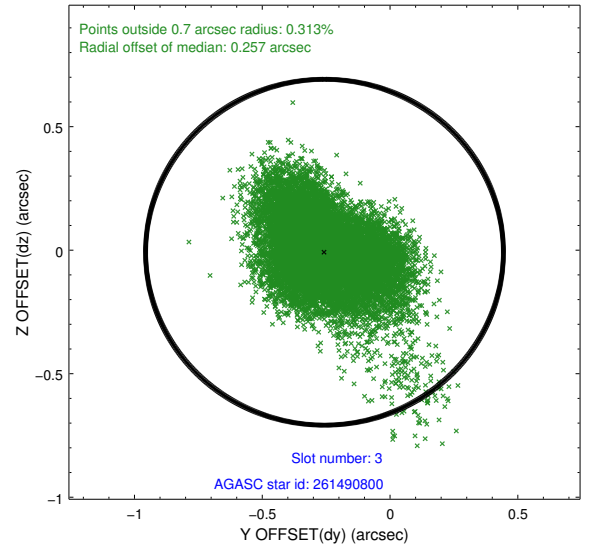
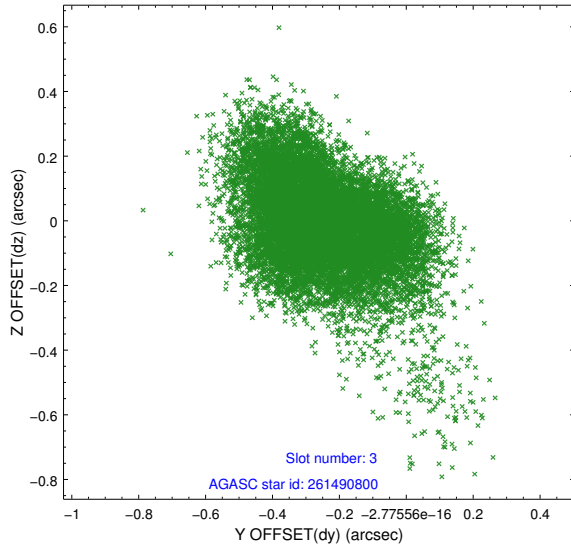


Slot Statistics

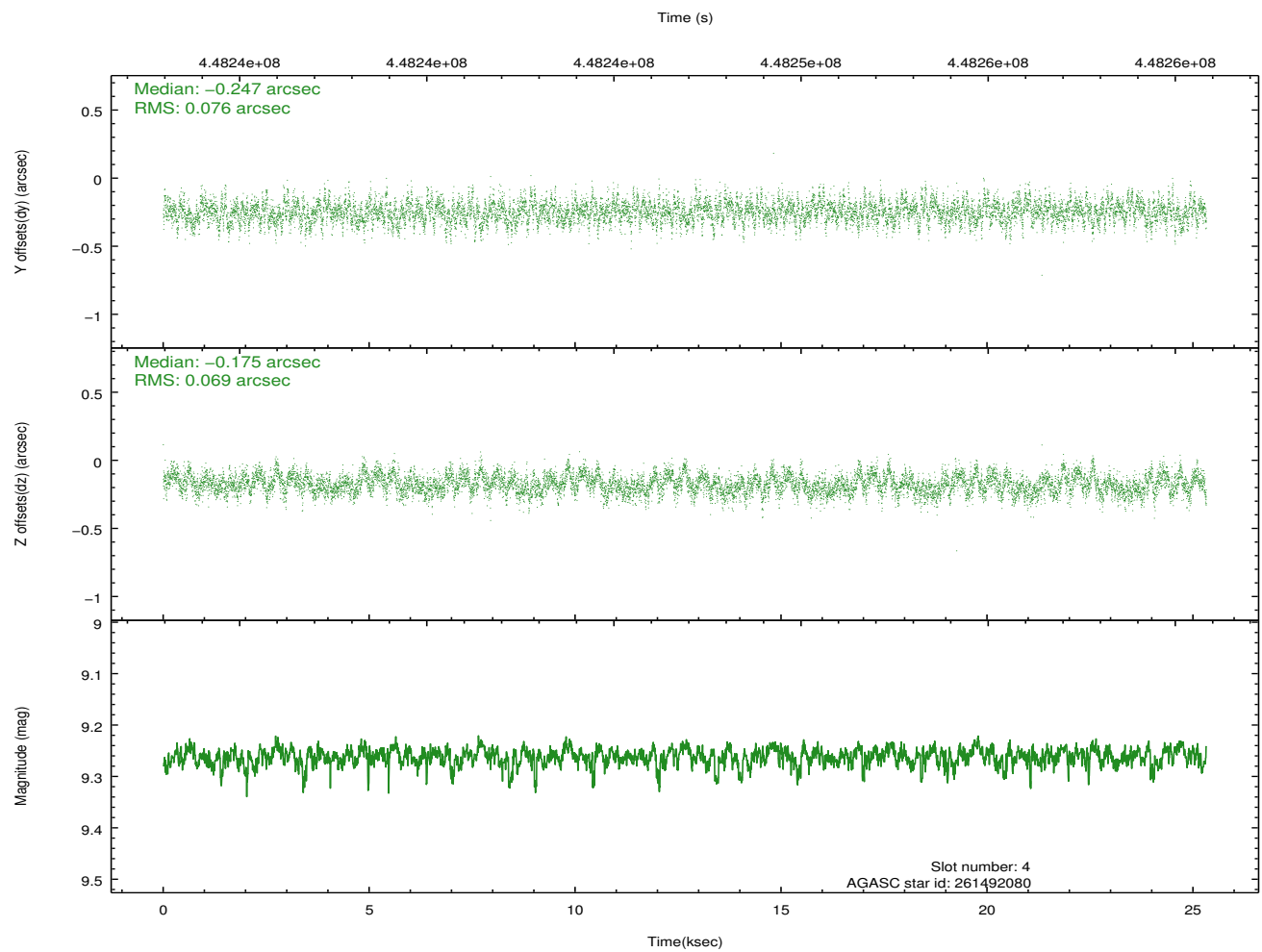
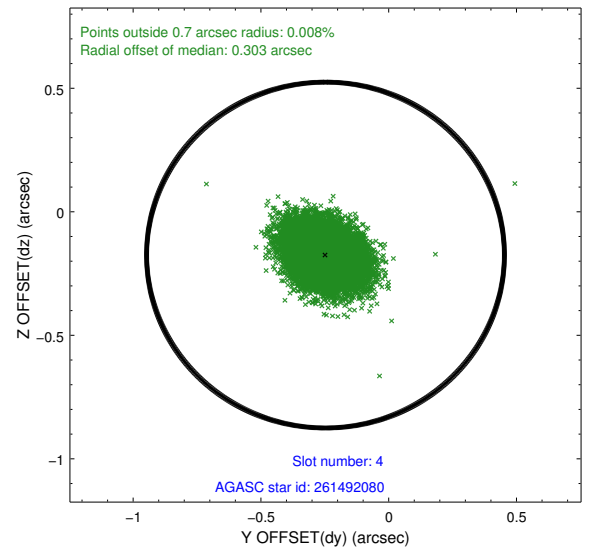
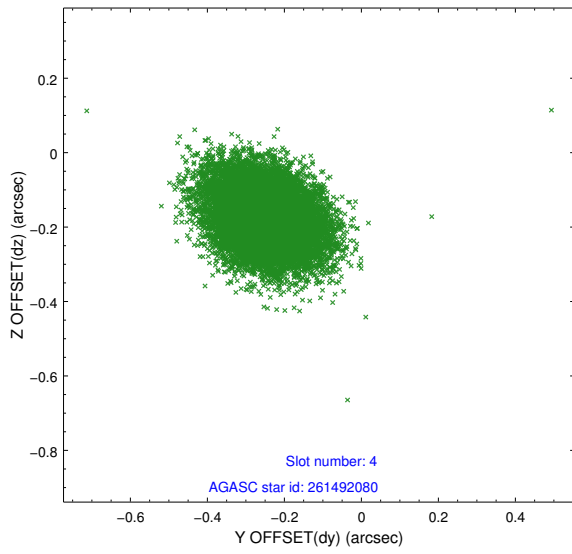
slot	status	id	mag	n_pts	med_dy	med_dz	dr1	dr2	ra	dec	mean_y	mean_z
0	FID	ACIS-I-1	7.06	6177	0.034	-0.006	0.016	0.025	0.000000	0.000000	923.89	-838.88
1	FID	ACIS-I-5	7.05	6177	-0.219	0.036	0.008	0.014	0.000000	0.000000	-1824.42	1058.58
2	FID	ACIS-I-6	7.06	6177	0.094	0.041	0.012	0.020	0.000000	0.000000	389.35	1703.23
3	GUIDE	261490800	10.13	12149	-0.256	-0.008	0.210	0.347	195.029641	27.224508	-1610.84	1901.66
4	GUIDE	261492080	9.26	12345	-0.247	-0.175	0.108	0.177	194.976344	28.631585	1776.21	-1868.48
5	GUIDE	261498392	8.31	12348	0.806	0.689	0.093	0.145	194.888587	28.238913	1081.85	-606.31
6	GUIDE	261502496	7.36	12353	-0.411	-0.172	0.087	0.149	194.887297	28.065668	683.05	-126.46
7	GUIDE	261505232	9.74	12233	0.085	-0.338	0.191	0.285	194.216553	27.802521	1714.53	1967.60

2.4 Star Slots

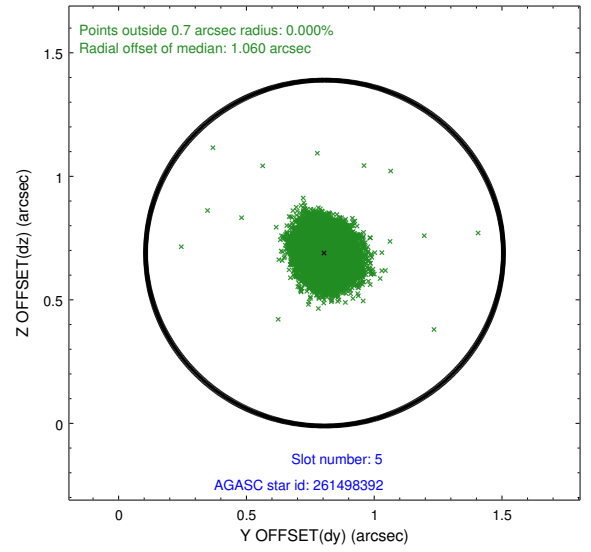
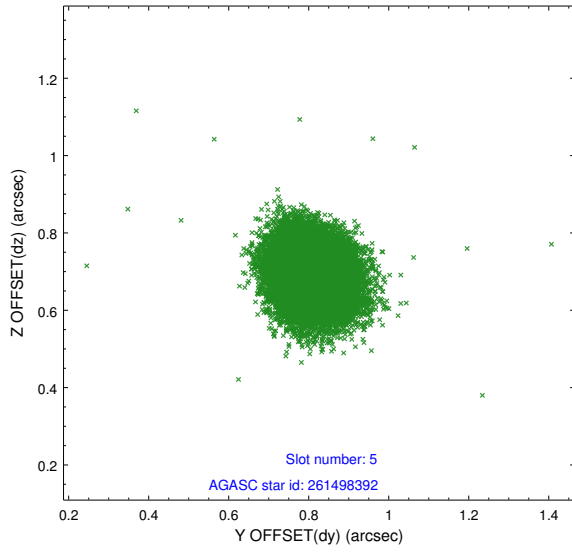
2.4.1 Slot 3



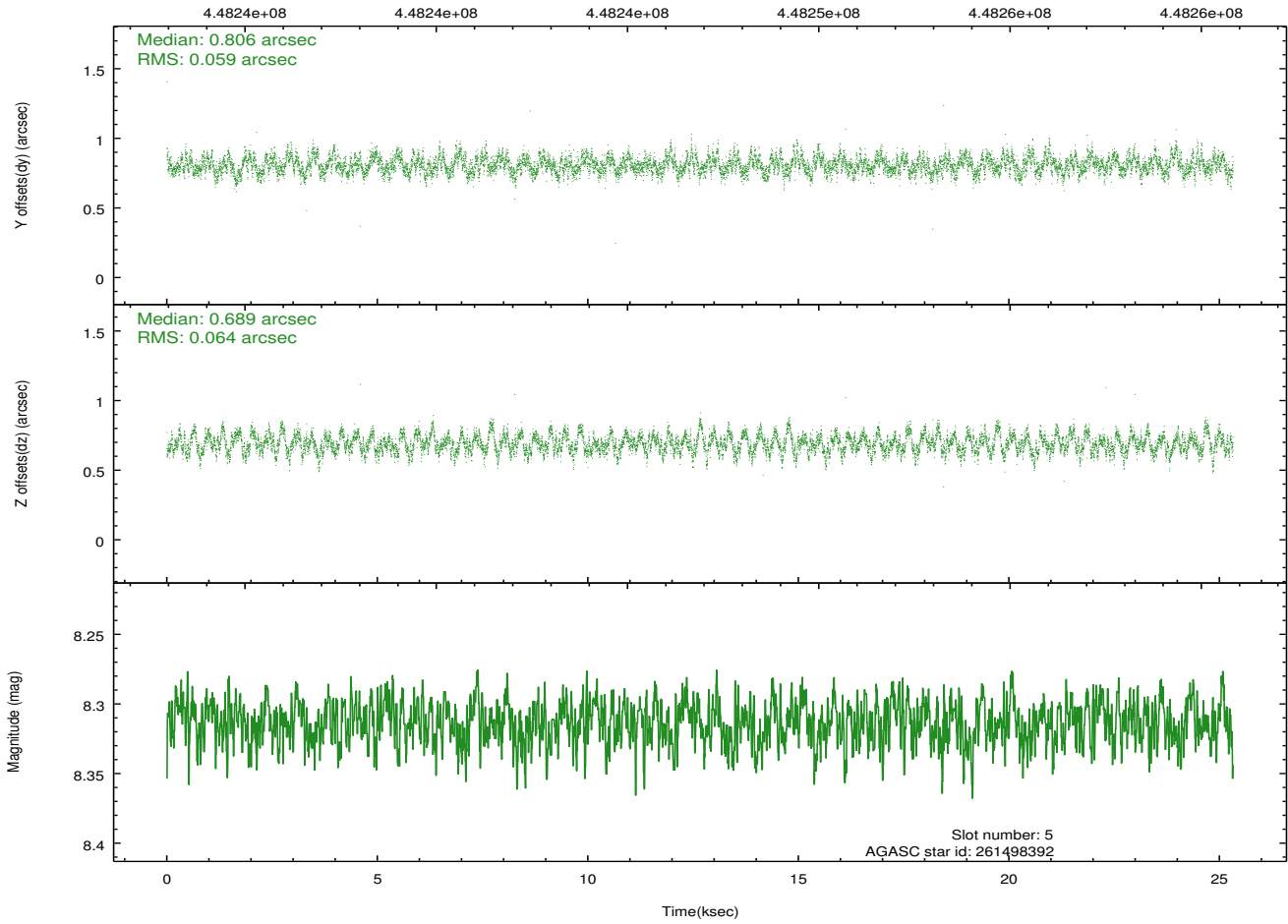
2.4.2 Slot 4



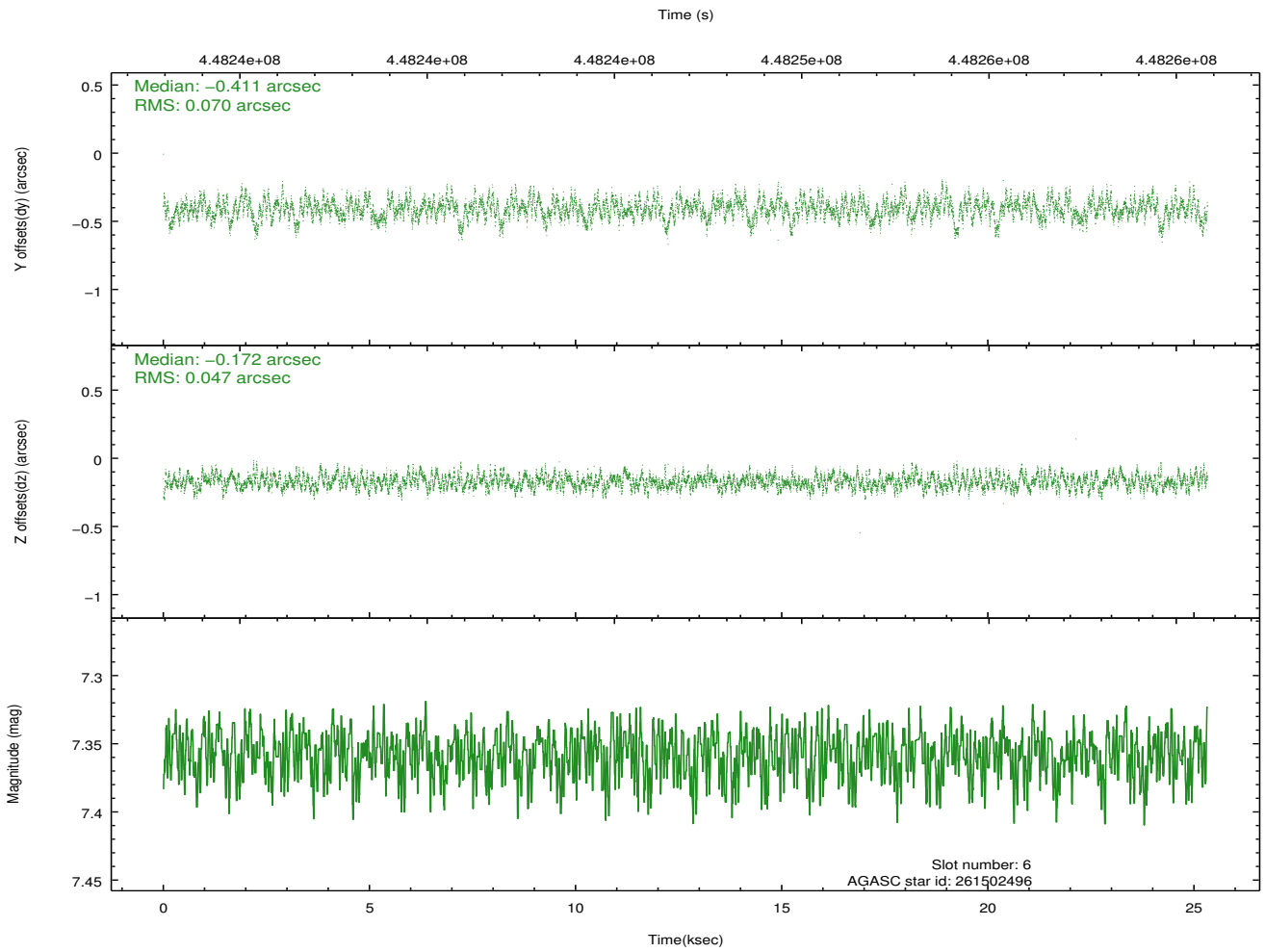
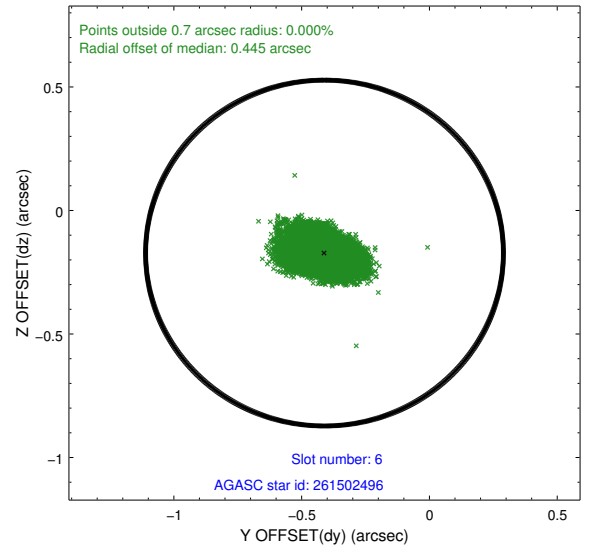
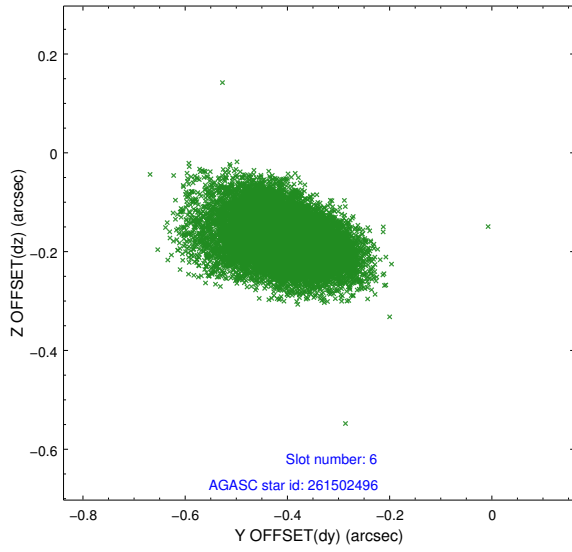
2.4.3 Slot 5



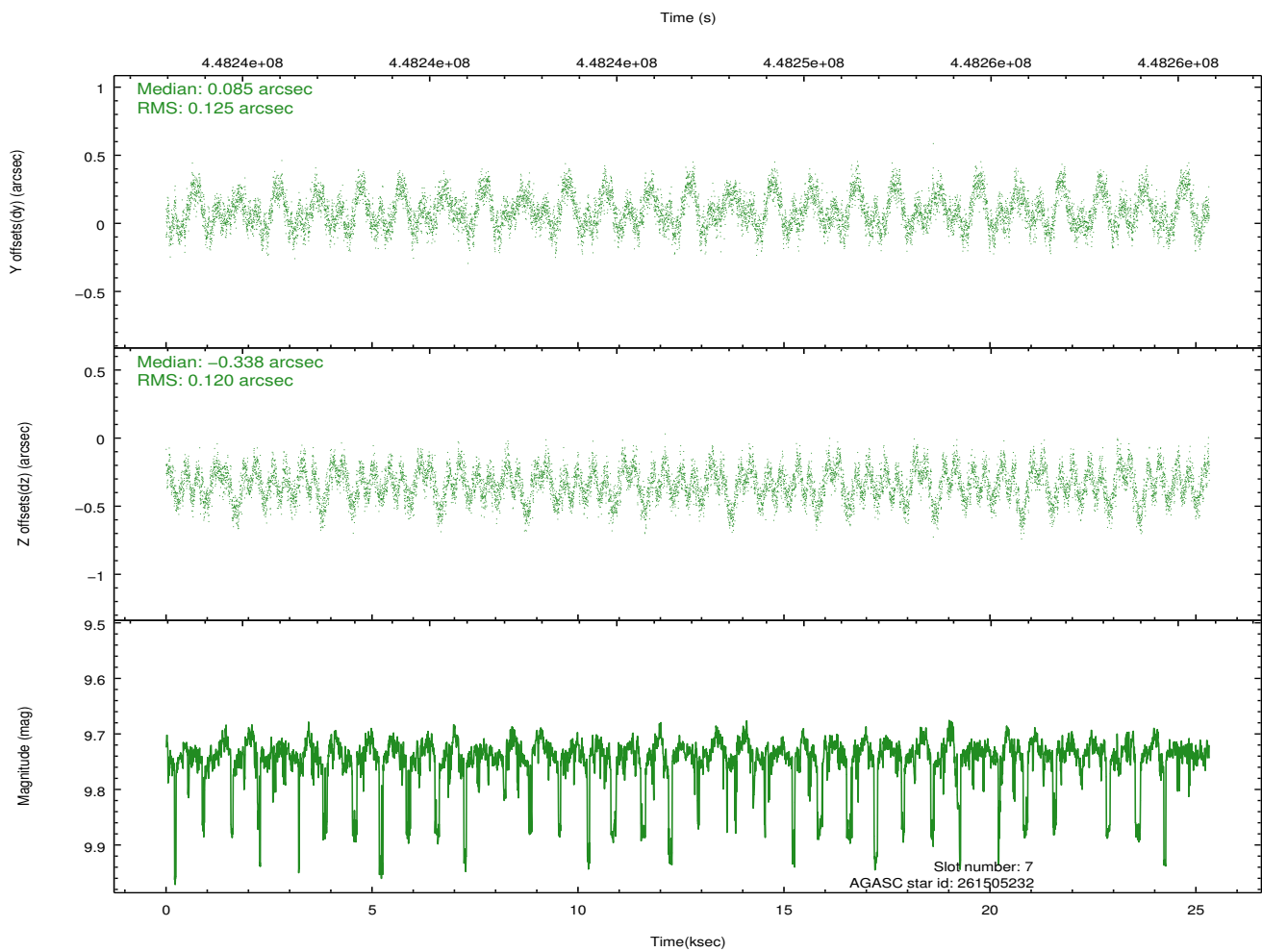
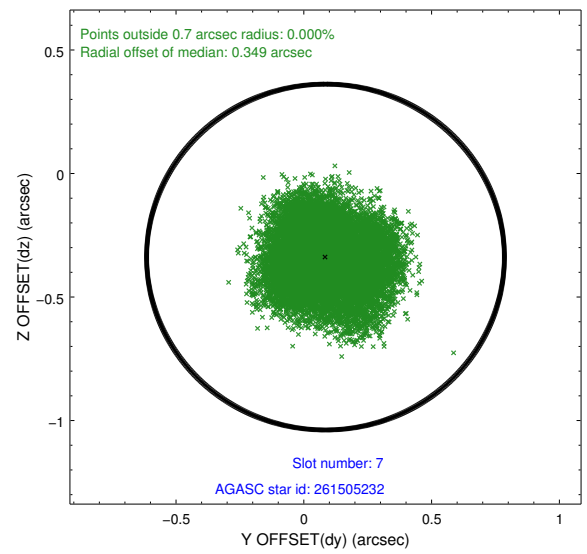
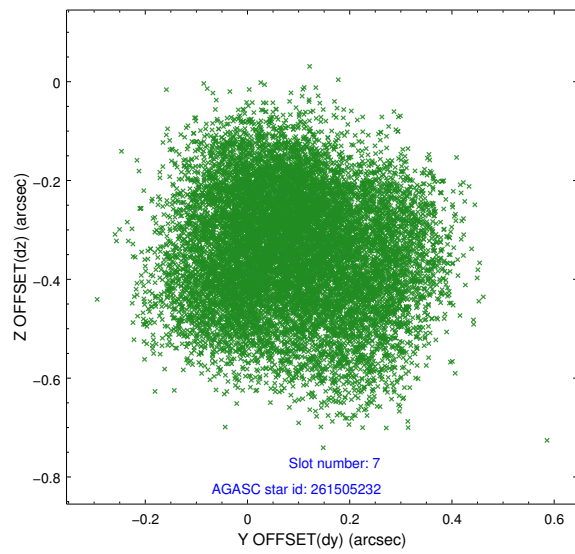
Time (s)



2.4.4 Slot 6

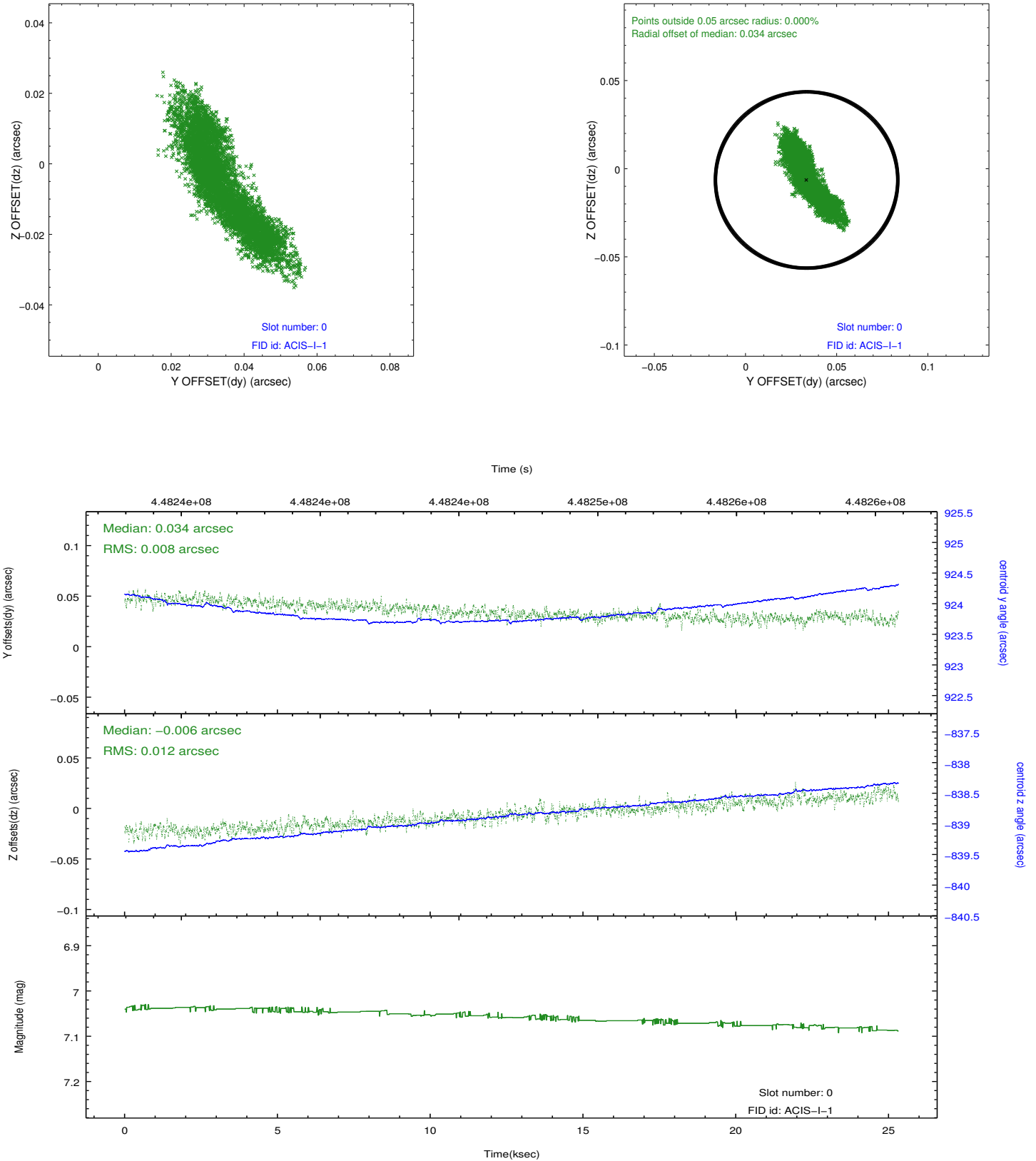


2.4.5 Slot 7

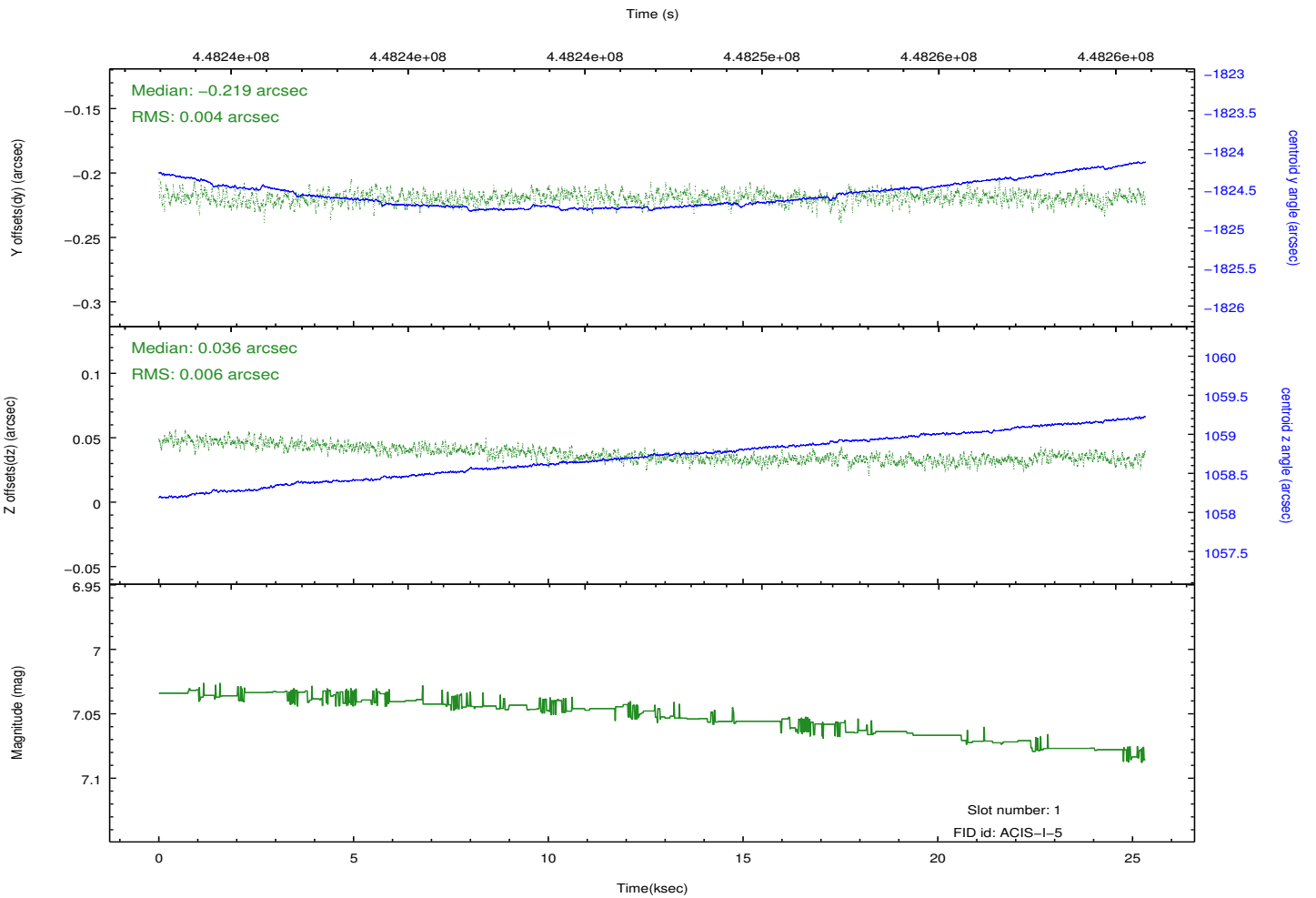
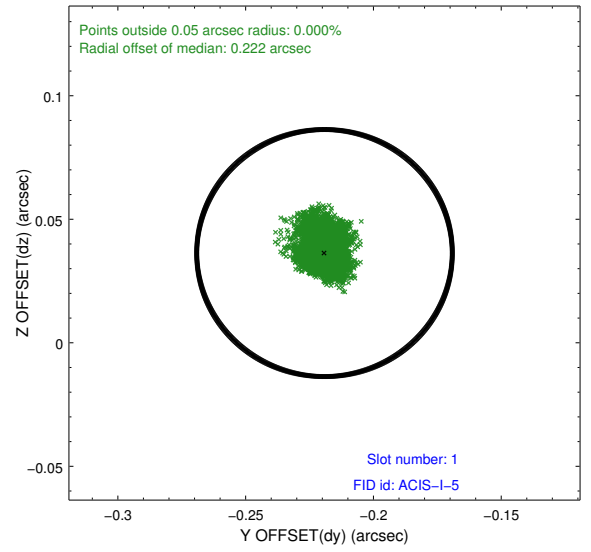
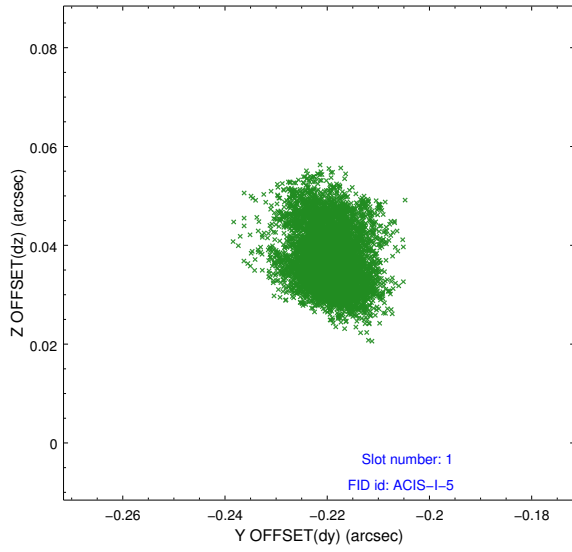


2.5 FID Slots

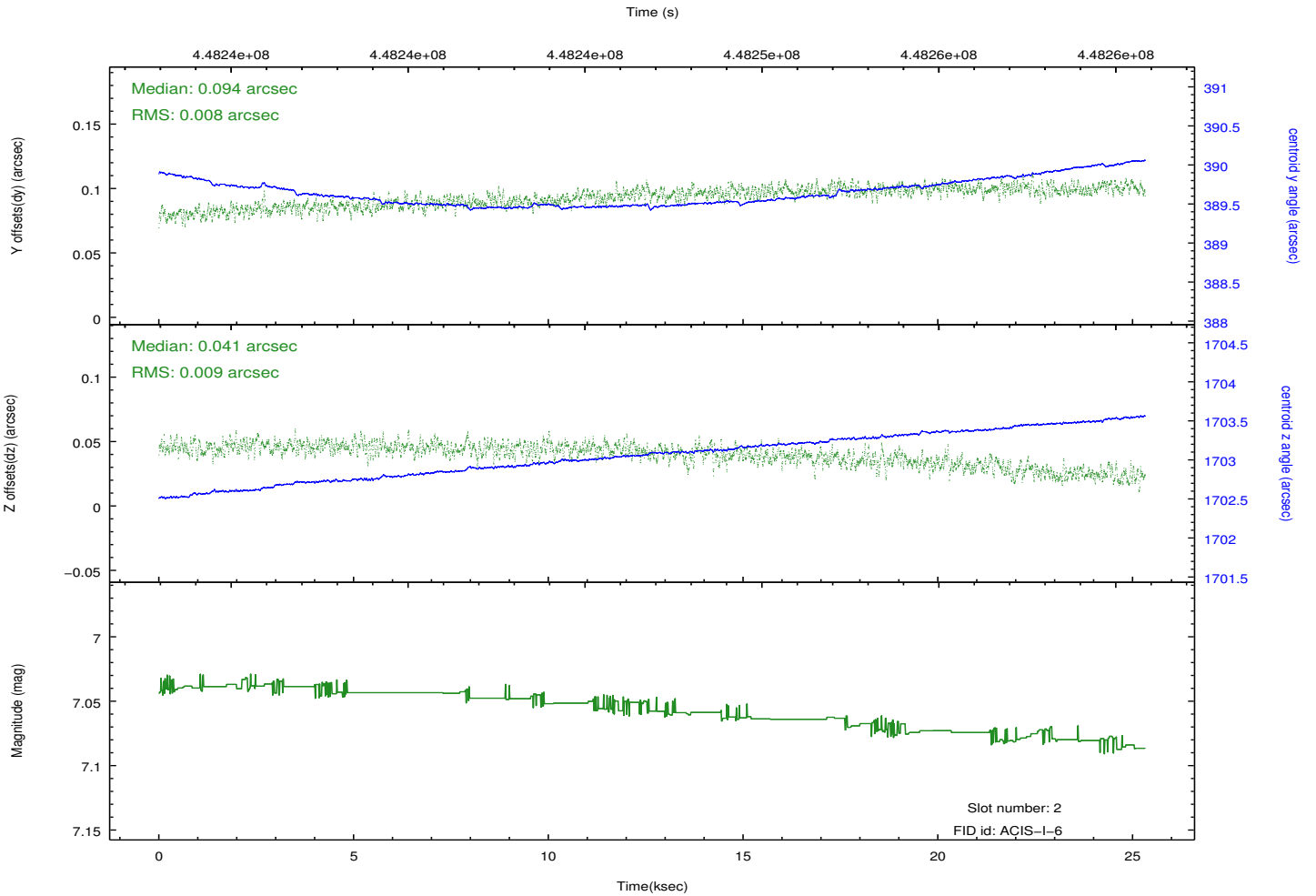
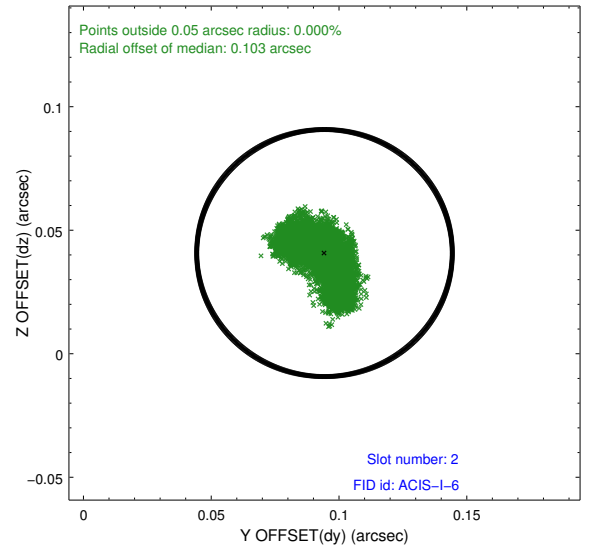
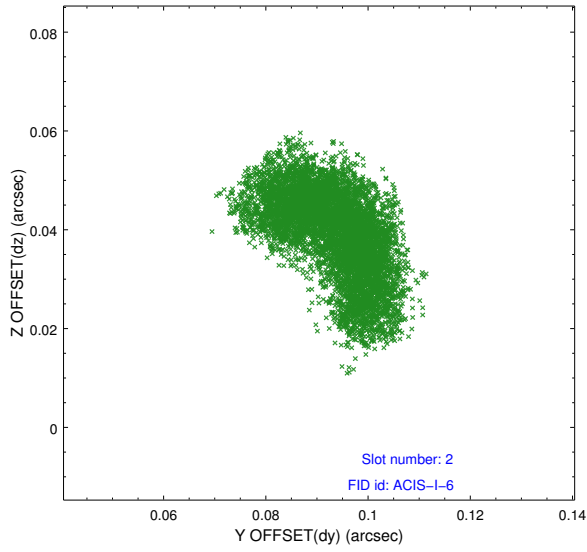
2.5.1 Slot 0



2.5.2 Slot 1



2.5.3 Slot 2



A Summary

A.1 Status

V&V Scientist	Beth Sundheim
V&V Date (YYYY-MM-DD)	2012.03.16
V&V Edition	1
V&V Disposition and Status	OK
V&V Charge Time	25.087134533167

A.2 Comments