

V&V Reference Report

L2 ASCDS Version : 8.5.1.1

Observation 15236 - L2 Version 2
Chandra X-Ray Center

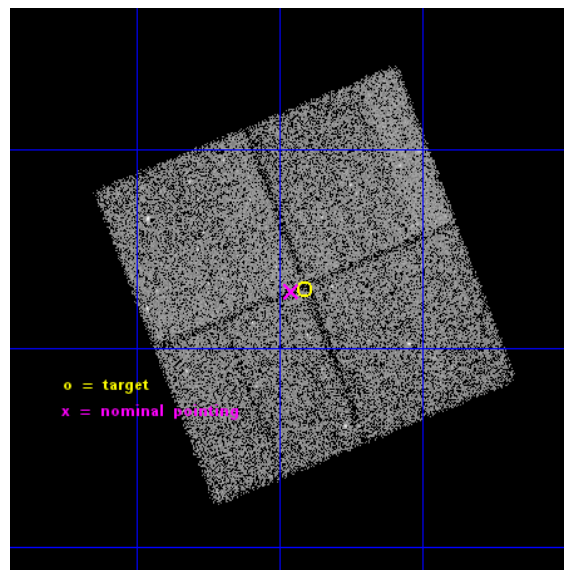
L2 Processing Date : Dec 3 2014

Contents

1	Front	2
2	OBI	3
2.1	OBI	3
2.1.1	Images	3
2.1.2	Bias	3
2.1.3	Parameters	4
2.1.4	Events	4
2.2	Compared Parameters	5
2.3	Aspect	6
2.4	Star Slots	9
2.4.1	Slot 3	9
2.4.2	Slot 4	10
2.4.3	Slot 5	11
2.4.4	Slot 6	12
2.4.5	Slot 7	13
2.5	FID Slots	14
2.5.1	Slot 0	14
2.5.2	Slot 1	15
2.5.3	Slot 2	16
A	Summary	17
A.1	Status	17
A.2	Comments	17

1 Front

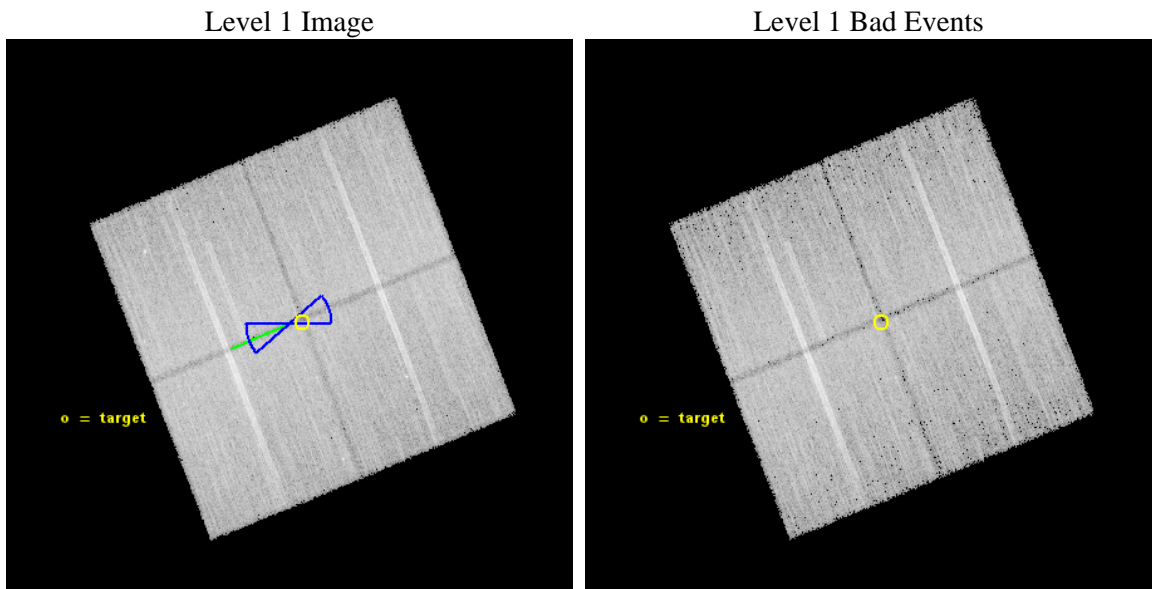
seq_num	901066	Sequence number
obs_id	15236	Observation id
title	The COSMOS Legacy Survey	Proposal title
observer	Dr Francesca Civano	Principal investigator
object	COSMOS Legacy	Source name
dtcycle	0	
cycle	P	events from which exps? Prim/Second/Both
ra_targ	150.35351	Observer's specified target RA [deg]
dec_targ	2.716353	Observer's specified target Dec [deg]
ra_nom	150.36482202355	Nominal RA [deg]
dec_nom	2.7142601098958	Nominal Dec [deg]
roll_nom	248.23921282281	Nominal Roll [deg]
revision	2	Processing version of data
ontime	50089.759424865	Sum of GTIs [s]
livetime	49435.299842435	Livetime [s]
ontime0	50092.900385261	Sum of GTIs [s]
ontime1	50089.759424865	Sum of GTIs [s]
ontime2	50083.477464199	Sum of GTIs [s]
ontime3	50092.900385261	Sum of GTIs [s]
l2events	97265	Number of level 2 events



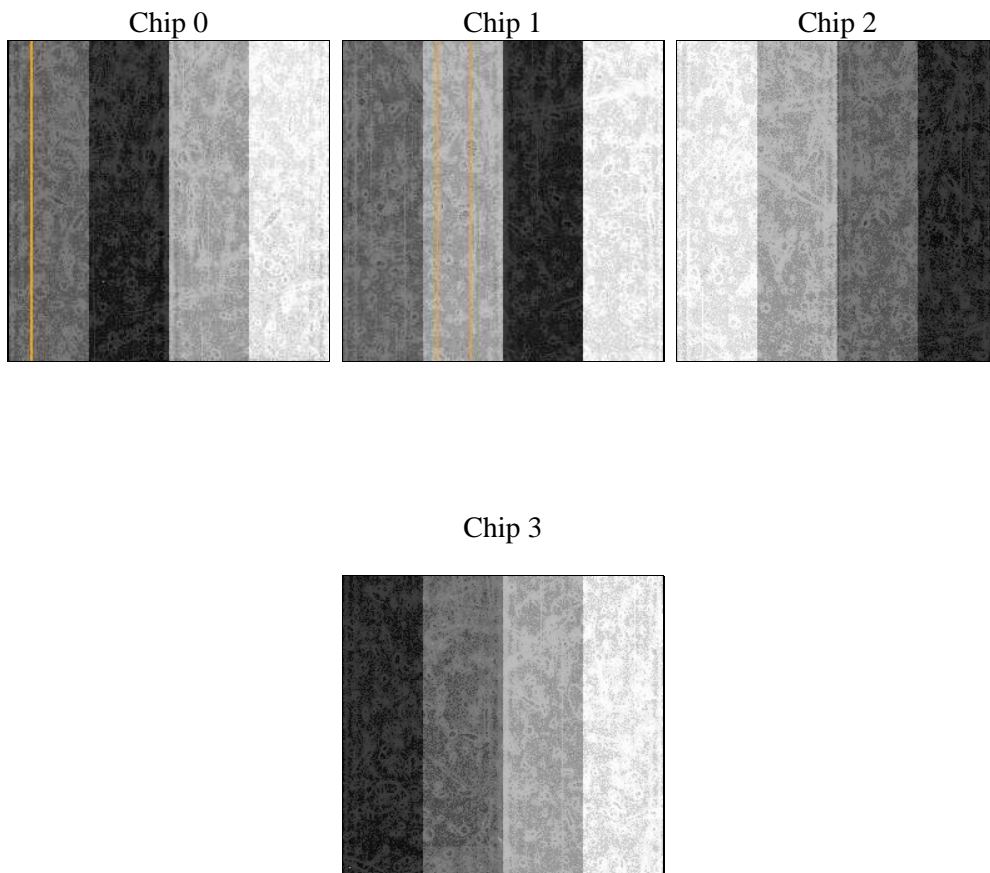
2 OBI

2.1 OBI

2.1.1 Images



2.1.2 Bias



2.1.3 Parameters

obi_num	1	Obi number	sched_exp_time	50000.000000	[s] Scheduled observation exposure time
ascdsver	10.3	Processing system revision	ontime	50089.759424865	Sum of GTIs [s]
caldbver	4.6.4	 	ontime0	50092.900385261	Sum of GTIs [s]
date	2014-12-03T12:28:54	Date and time of file creation	ontime1	50089.759424865	Sum of GTIs [s]
revision	2	Processing version of data	ontime2	50083.477464199	Sum of GTIs [s]
			ontime3	50092.900385261	Sum of GTIs [s]
			l1events	904927	Number of level 1 events

2.1.4 Events

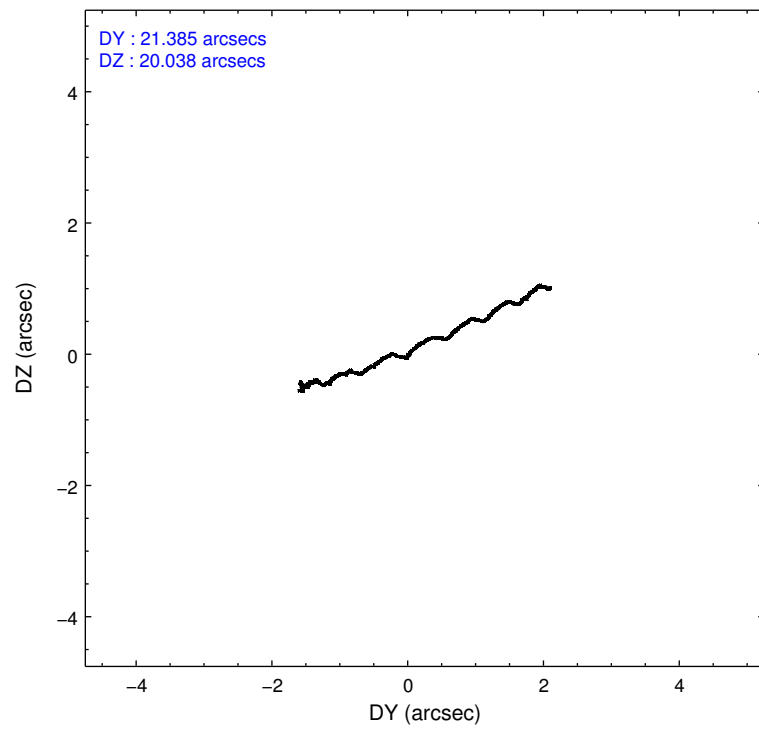
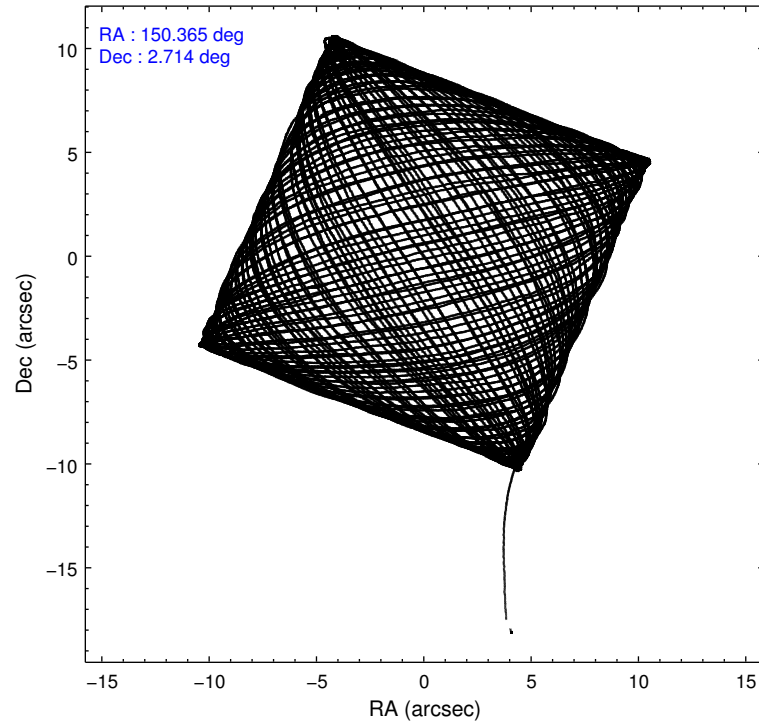
	ccd 0	ccd 1	ccd 2	ccd 3
level 1 events	212600	226743	235394	230190
rejected events	184297	194663	207662	201811
rejected %	86%	85%	88%	87%

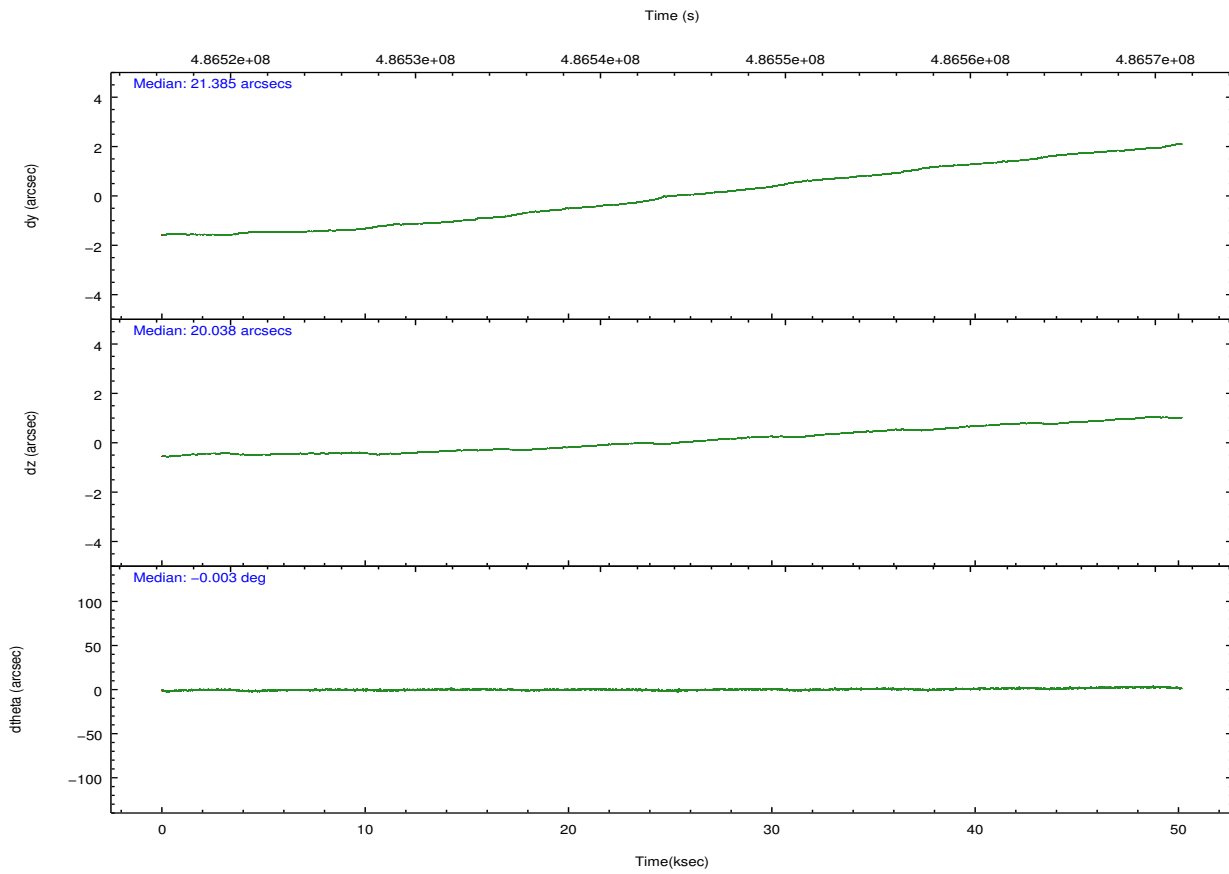
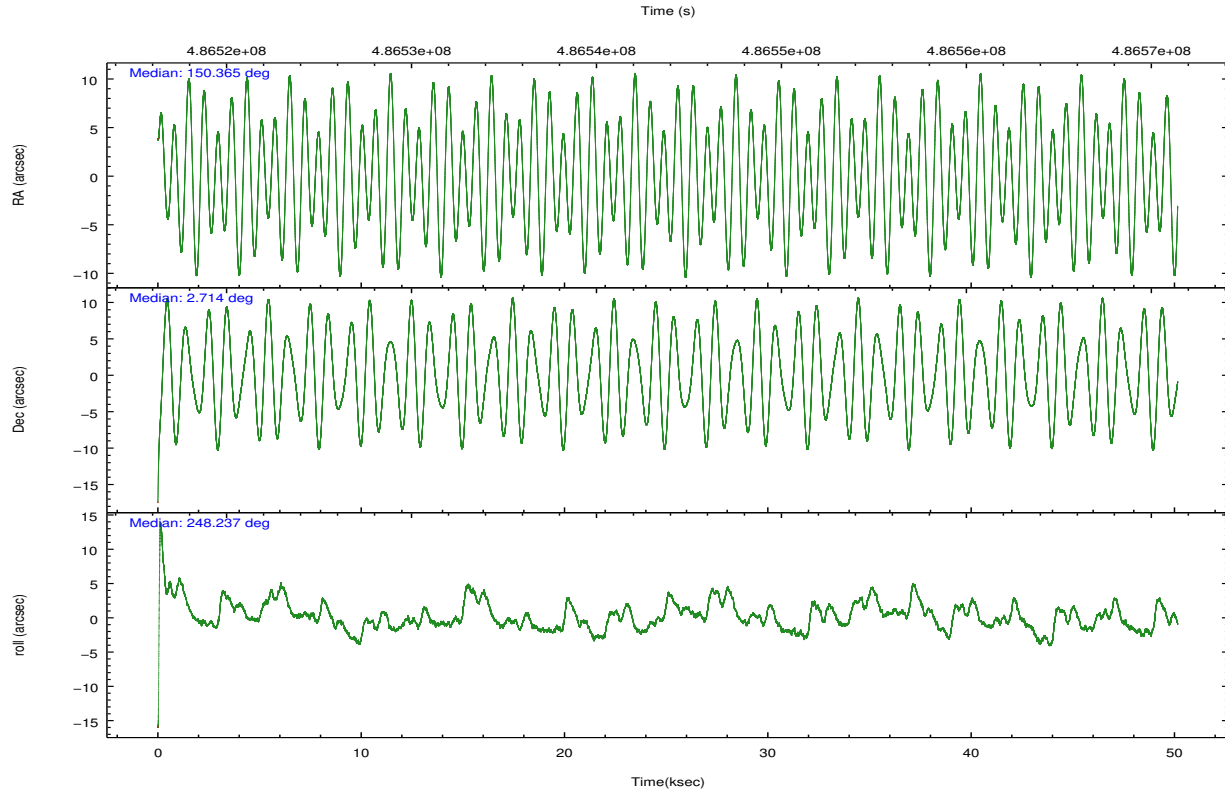
	ccd 0	ccd 1	ccd 2	ccd 3
grade 0 events	9776	11240	10081	10607
	4%	4%	4%	4%
grade 1 events	117	112	143	131
	0%	0%	0%	0%
grade 2 events	7133	7731	6843	6189
	3%	3%	2%	2%
grade 3 events	2883	3115	2695	2929
	1%	1%	1%	1%
grade 4 events	2774	3197	2825	2983
	1%	1%	1%	1%
grade 5 events	10935	11801	10031	12778
	5%	5%	4%	5%
grade 6 events	5740	6800	5296	5671
	2%	2%	2%	2%
grade 7 events	173242	182747	197480	188902
	81%	80%	83%	82%

2.2 Compared Parameters

Parameter	Planned	Actual	Parameter	Planned	Actual
Instrument	ACIS	ACIS	Obspar format version number	7	7
Detector	ACIS-0123	ACIS-0123	Obspar file type	PREDICTED	ACTUAL
Grating	NONE	NONE	Obspar update status	NONE	UPDATED
Data mode	VFAINT	VFAINT	Number of optional ACIS chips dropped	0	0
Observation mode	POINTING	POINTING	On-chip summing requested	N	N
[deg] Pointing RA	150.360770	150.3648220235537	Subarray requested	NONE	NONE
[deg] Pointing Dec	2.741461	2.714260109895844	Alternating exposures requested	N	N
[deg] Pointing Roll	248.030729	248.2392128228095	[s] Primary exposure time	0.000000	3.1
[deg] Roll angle	250.000000	250.000000			
[deg] Roll tolerance	20.000000	20.000000			
Roll constraint allows 180D rotation	Y	Y			
[mm] SIM focus pos	-0.782348	-0.7809083437167272			
[mm] SIM defocus	0	0.001439871863259334			
[mm] SIM translation stage pos	-233.592463	-233.5874344608287			
[mm] SIM translation stage offset	0	-0.005018542100998502			
[s] Observation start time (MET)	486518941.184000	486517880.70154			
Observation start date	2013-06-02T00:07:54	2013-06-01T23:51:20			
[s] Observation end time (MET)	486568941.184000	486570261.27938			
Observation end date	2013-06-02T14:01:14	2013-06-02T14:24:21			
Read mode	TIMED	TIMED			

2.3 Aspect



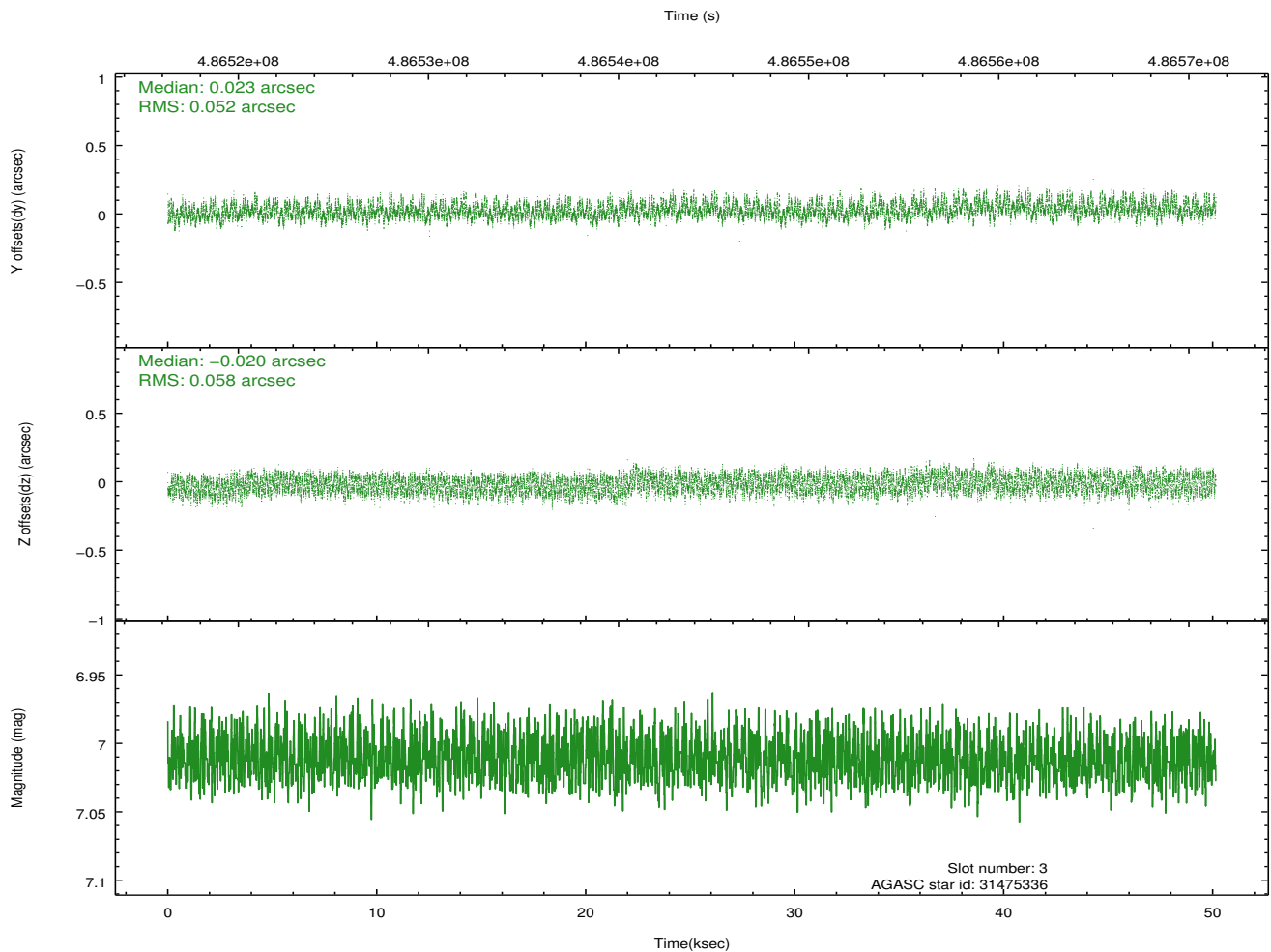
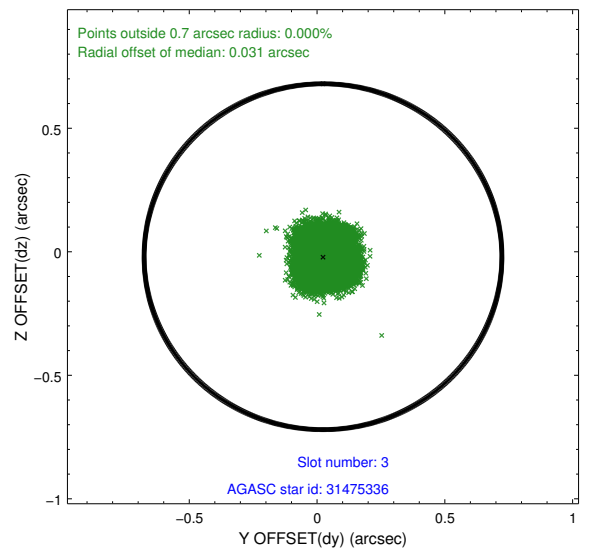
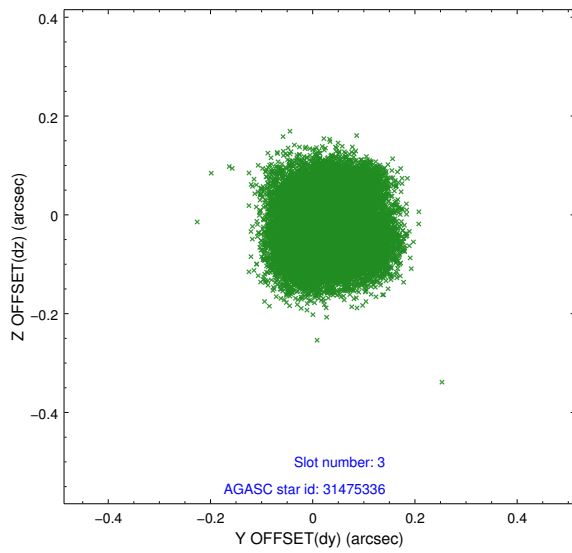


Slot Statistics

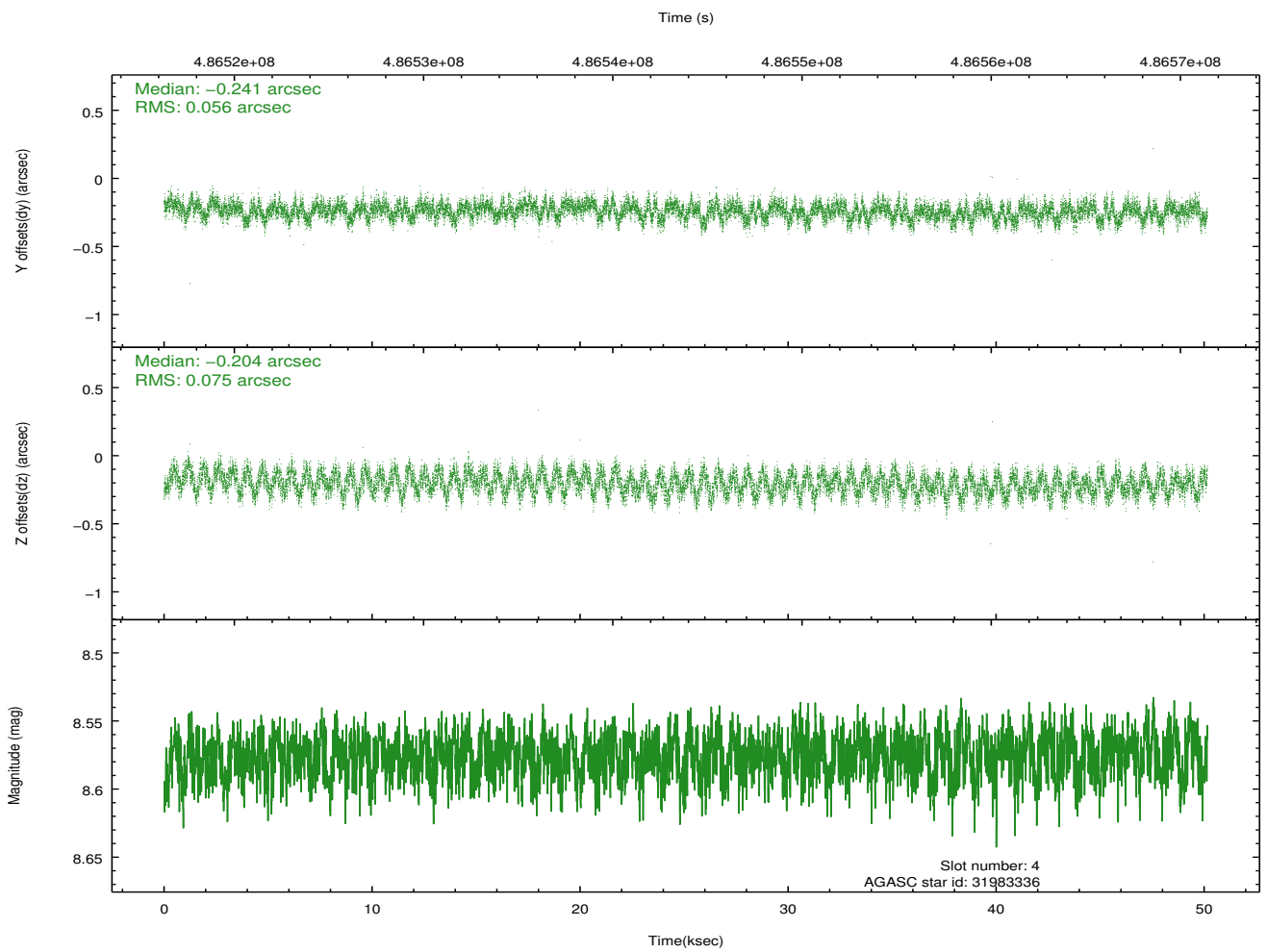
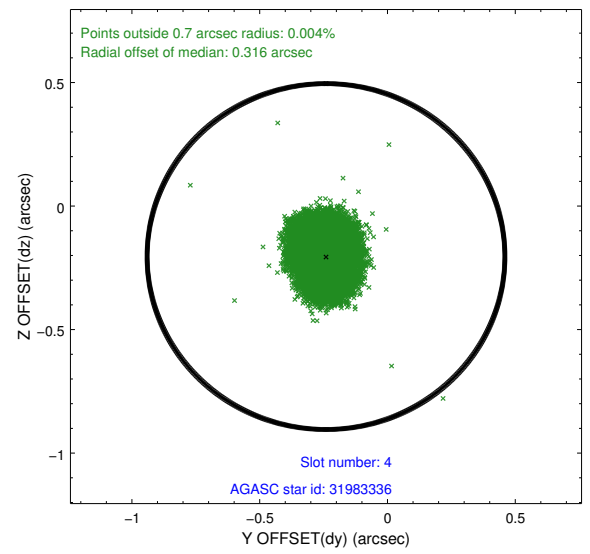
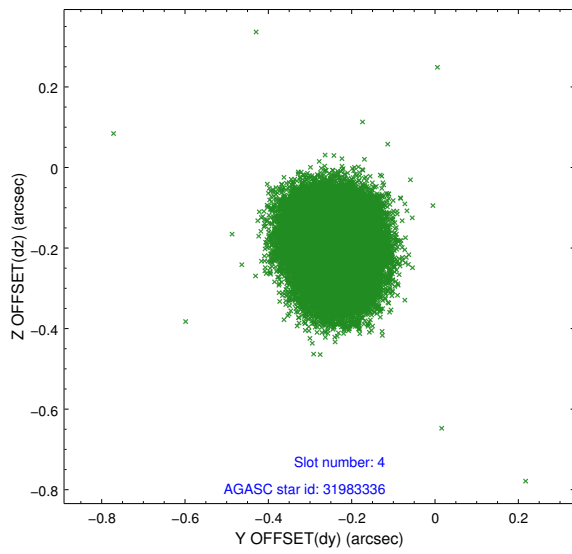
slot	status	used	id	mag	n_pts	med_dy	med_dz	dr1	dr2	ra	dec	mean_y	mean_z
0	FID		ACIS-I-1	7.06	12234	0.038	0.004	0.035	0.065	0.000000	0.000000	917.94	-843.87
1	FID		ACIS-I-5	7.05	12234	-0.255	0.034	0.017	0.043	0.000000	0.000000	-1830.52	1053.62
2	FID		ACIS-I-6	7.06	12233	0.123	0.035	0.022	0.030	0.000000	0.000000	383.53	1698.14
3	GUIDE	used	31475336	7.01	24467	0.023	-0.020	0.085	0.129	149.929497	3.384805	-1567.92	-2304.74
4	GUIDE	used	31983336	8.58	24463	-0.241	-0.204	0.101	0.156	150.429924	2.291234	1410.05	837.03
5	GUIDE	used	32374896	9.22	24375	-0.105	-0.058	0.095	0.152	150.682269	2.512794	331.20	1380.63
6	GUIDE	used	32386456	9.22	24449	0.072	0.331	0.115	0.185	150.309862	3.285518	-1747.52	-901.88
7	GUIDE	used	32387968	9.21	24450	0.251	-0.050	0.111	0.175	150.106347	3.119099	-918.33	-1356.67

2.4 Star Slots

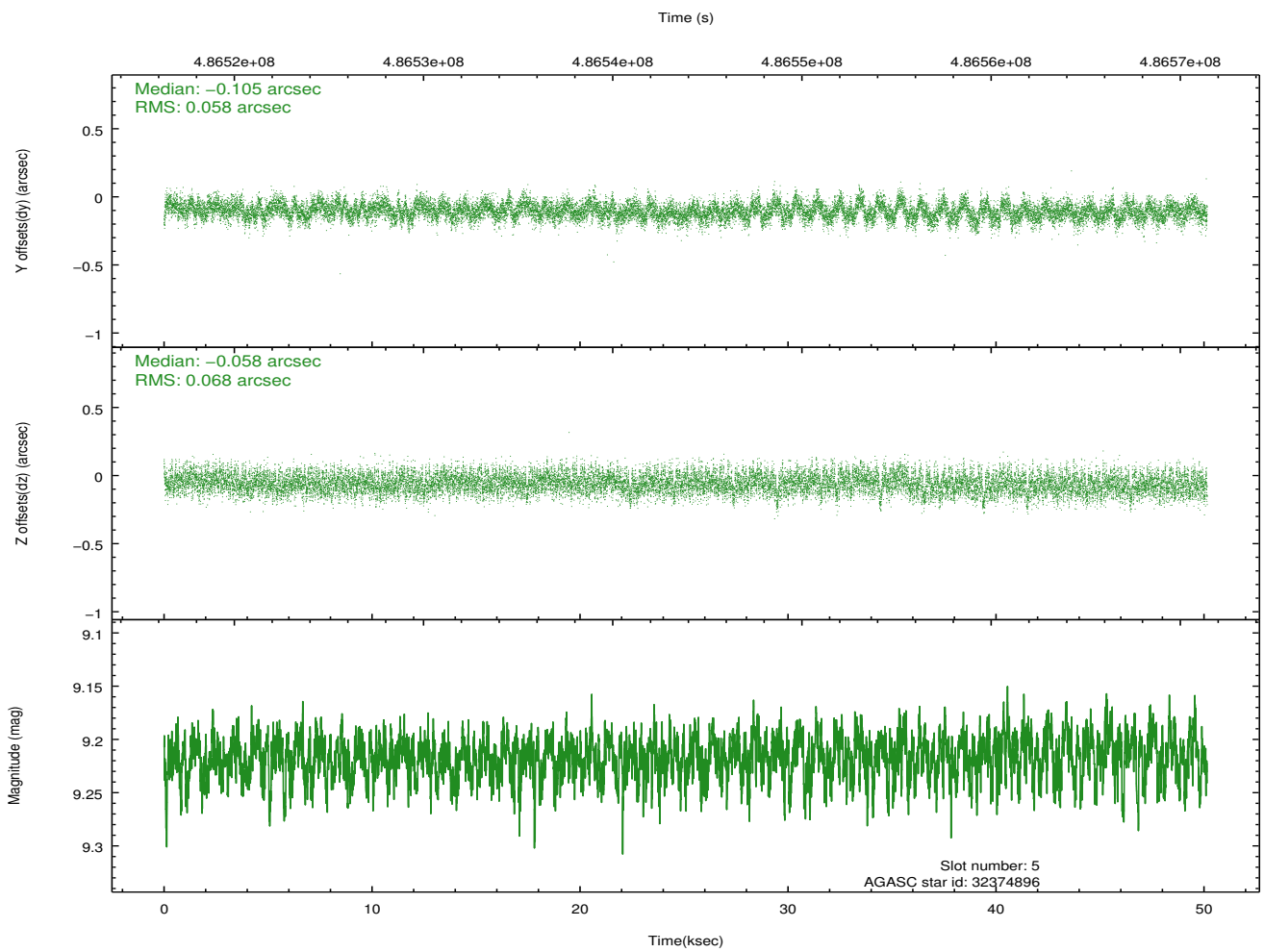
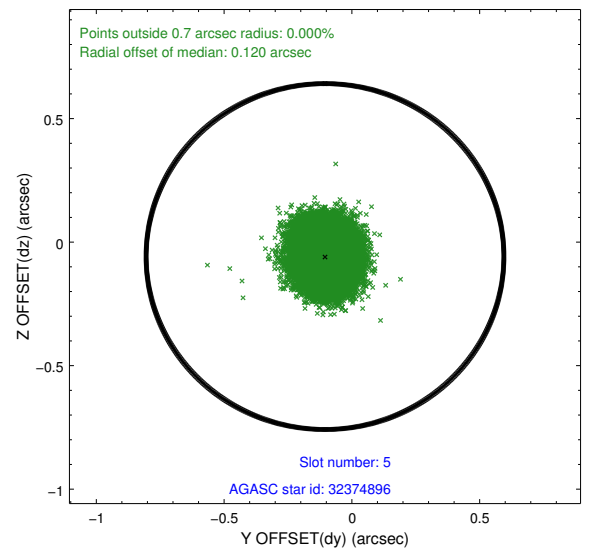
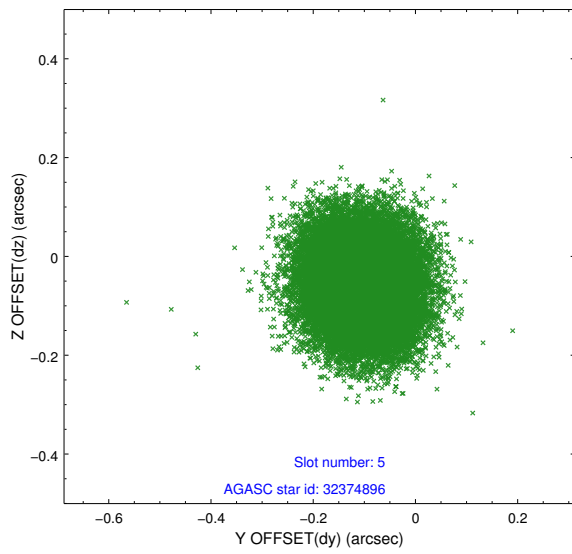
2.4.1 Slot 3



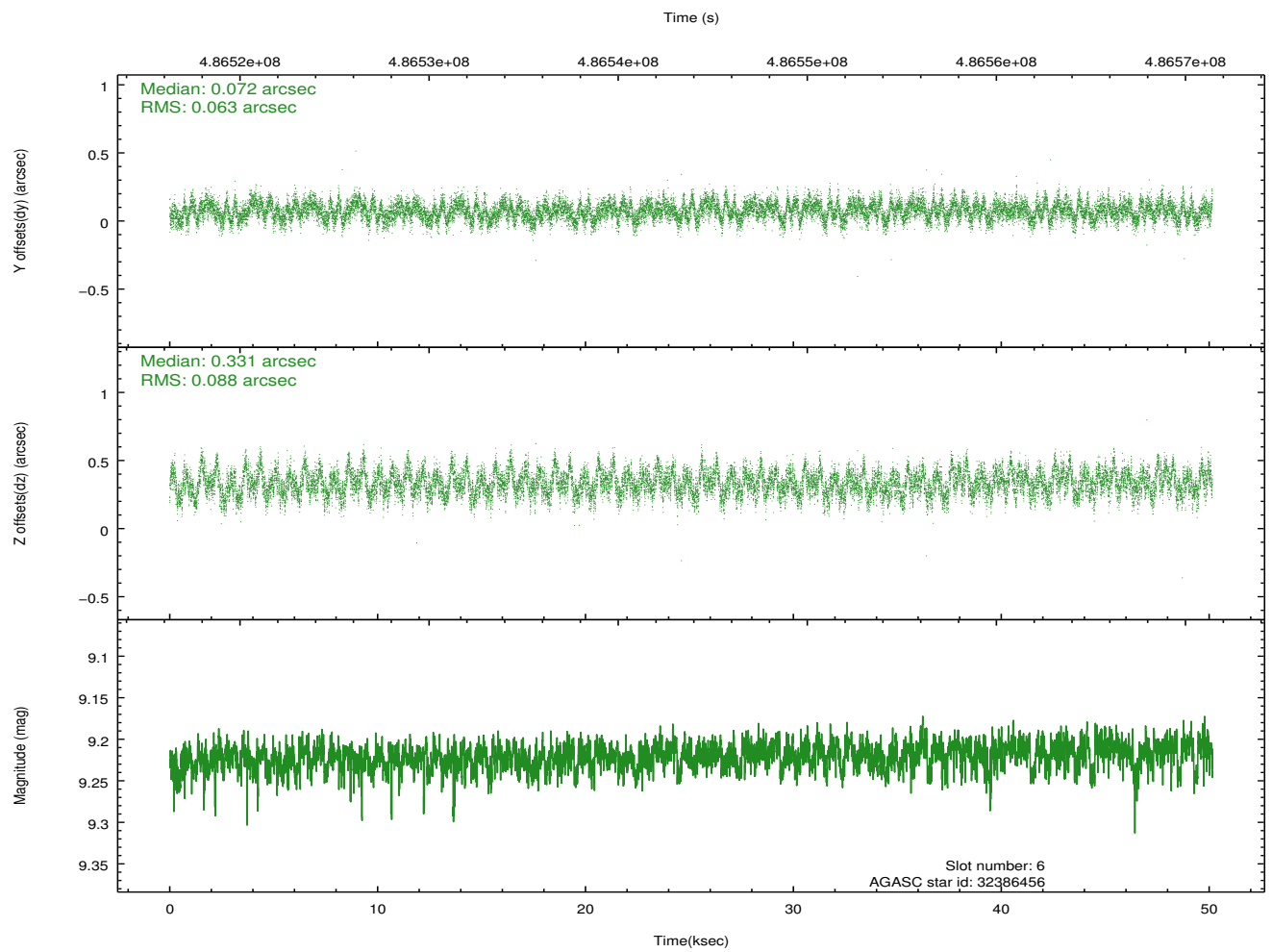
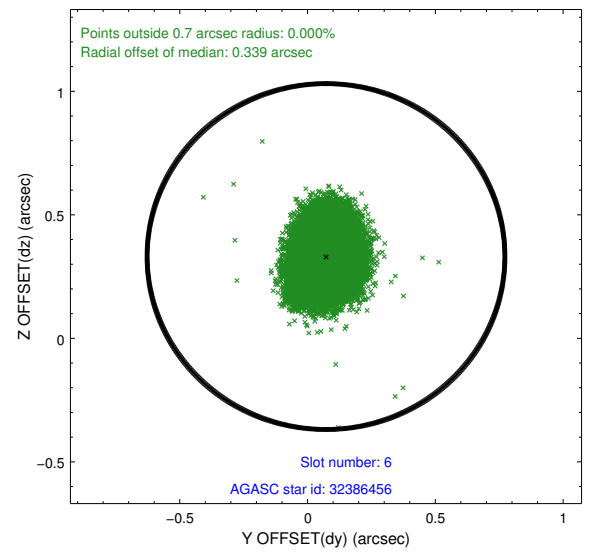
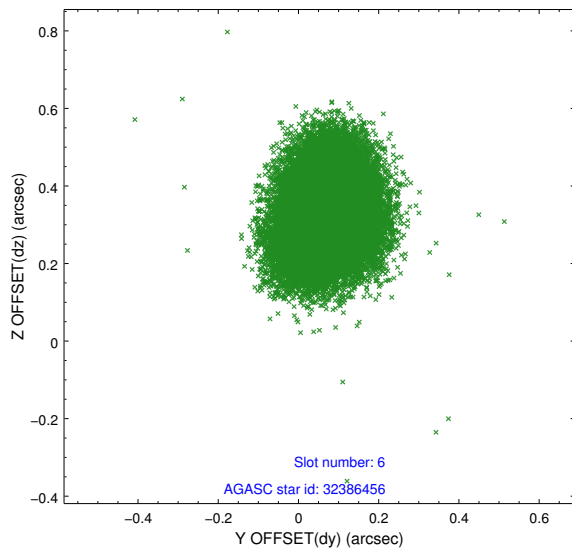
2.4.2 Slot 4



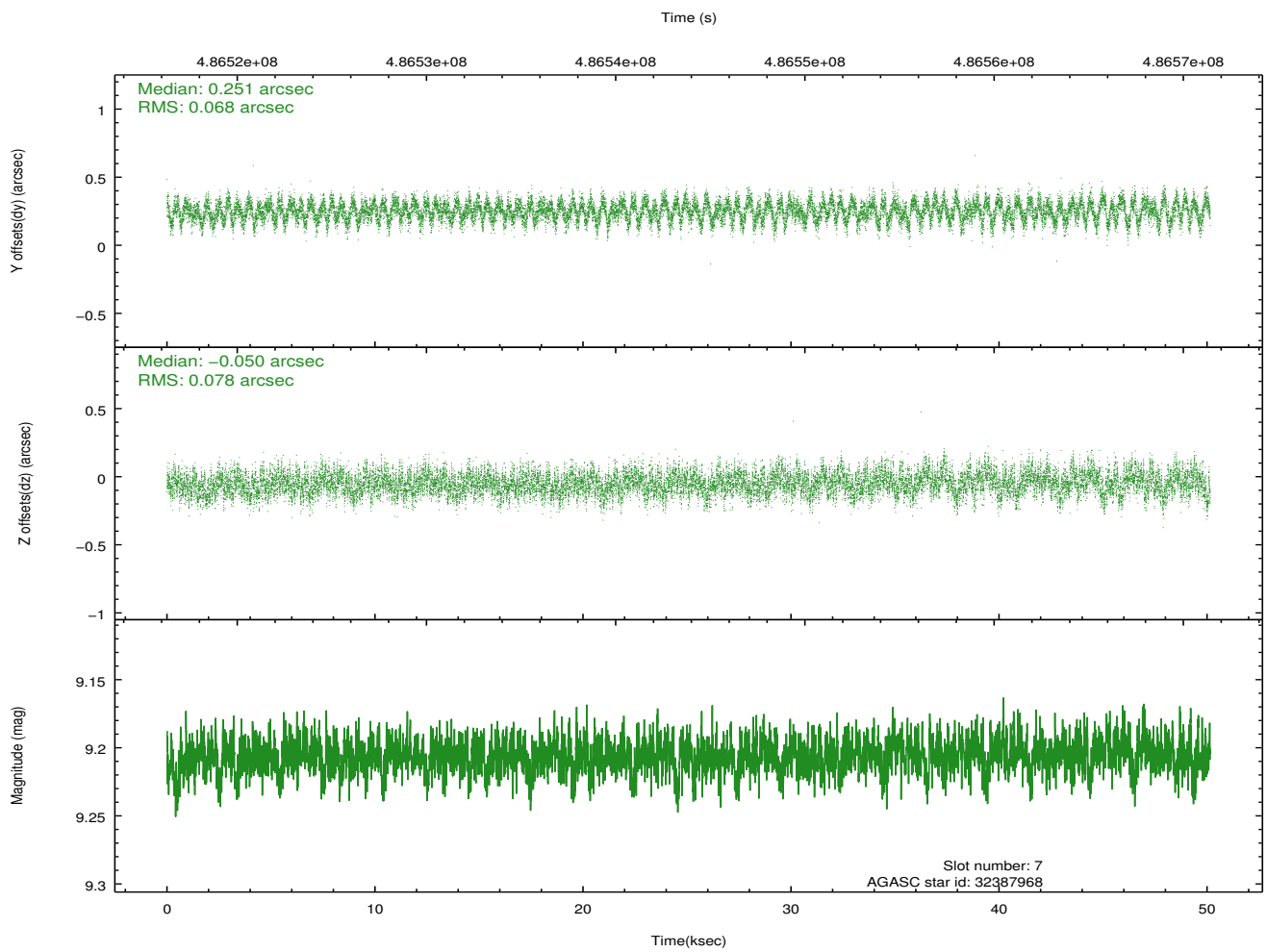
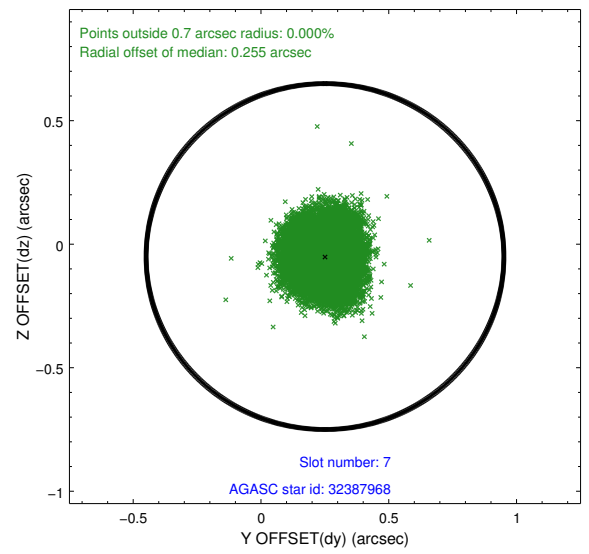
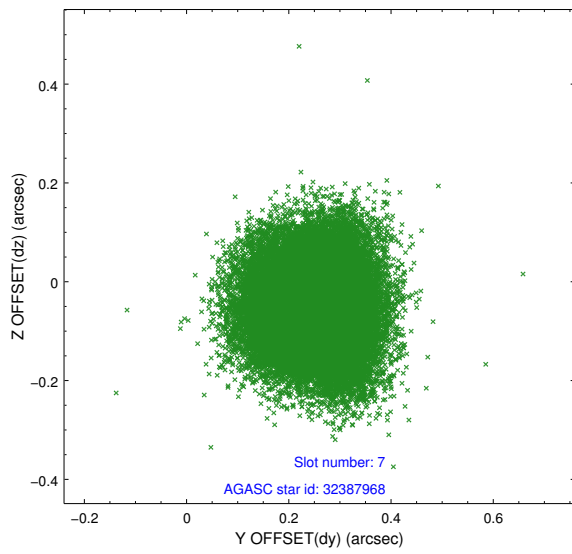
2.4.3 Slot 5



2.4.4 Slot 6

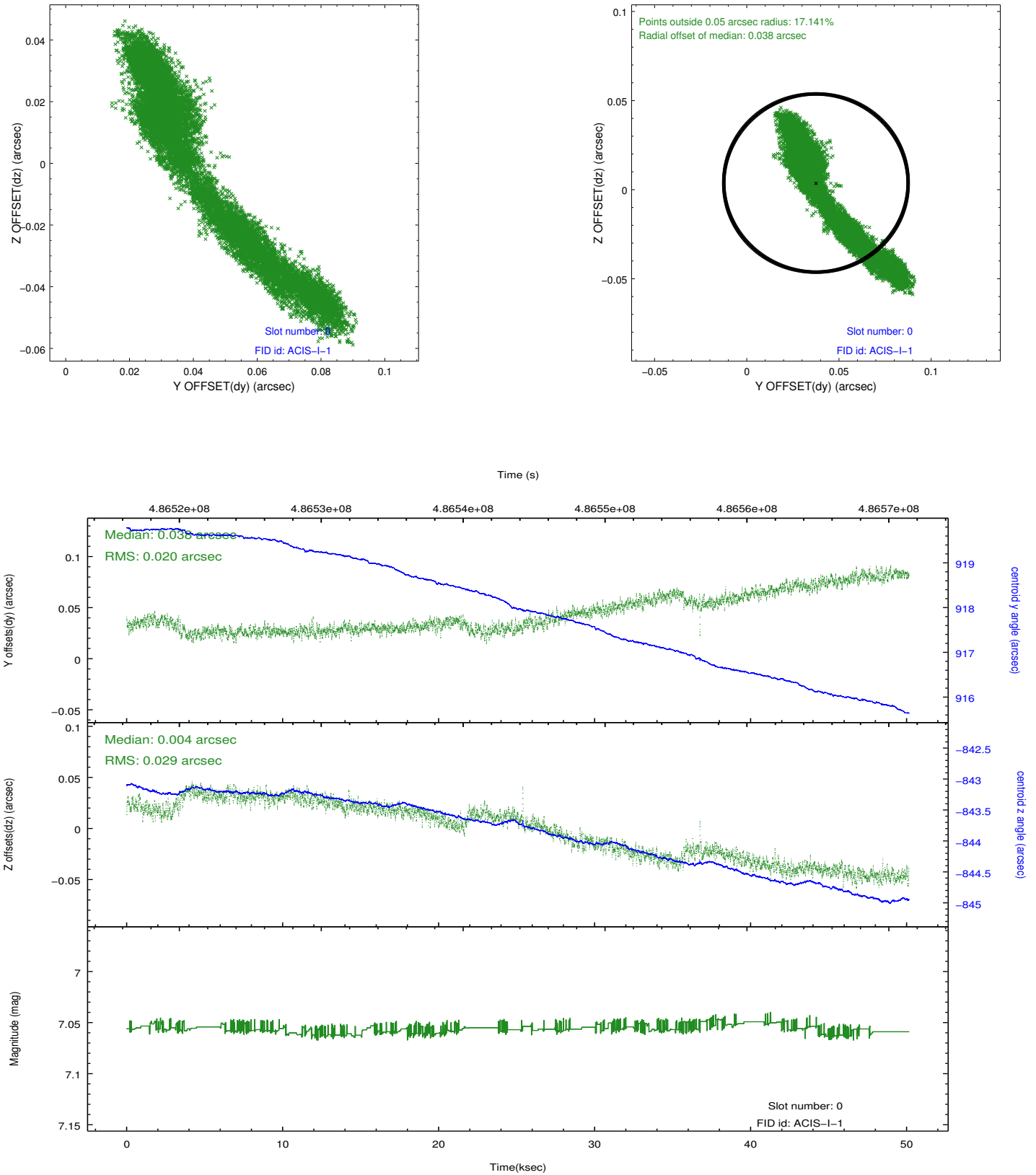


2.4.5 Slot 7

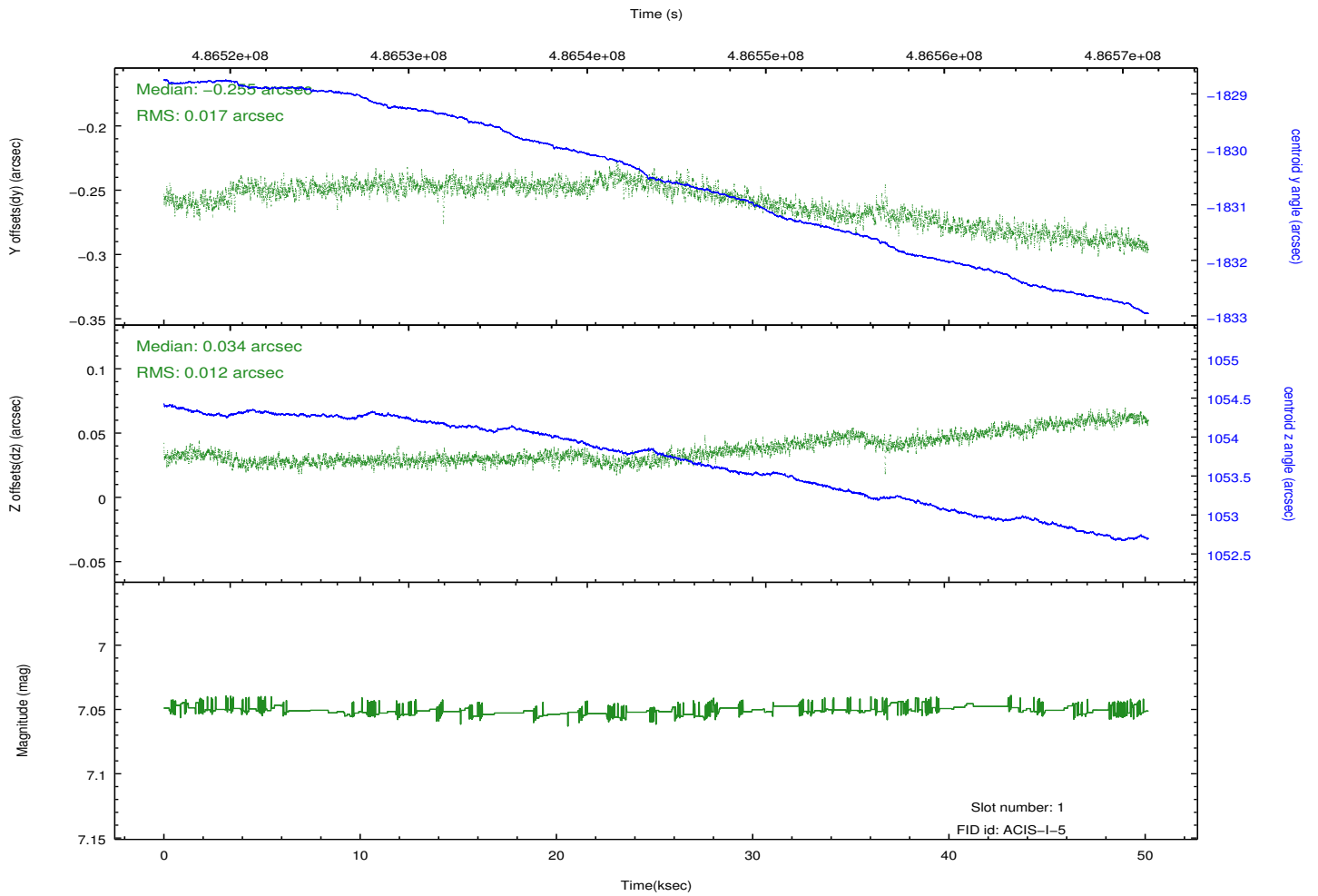
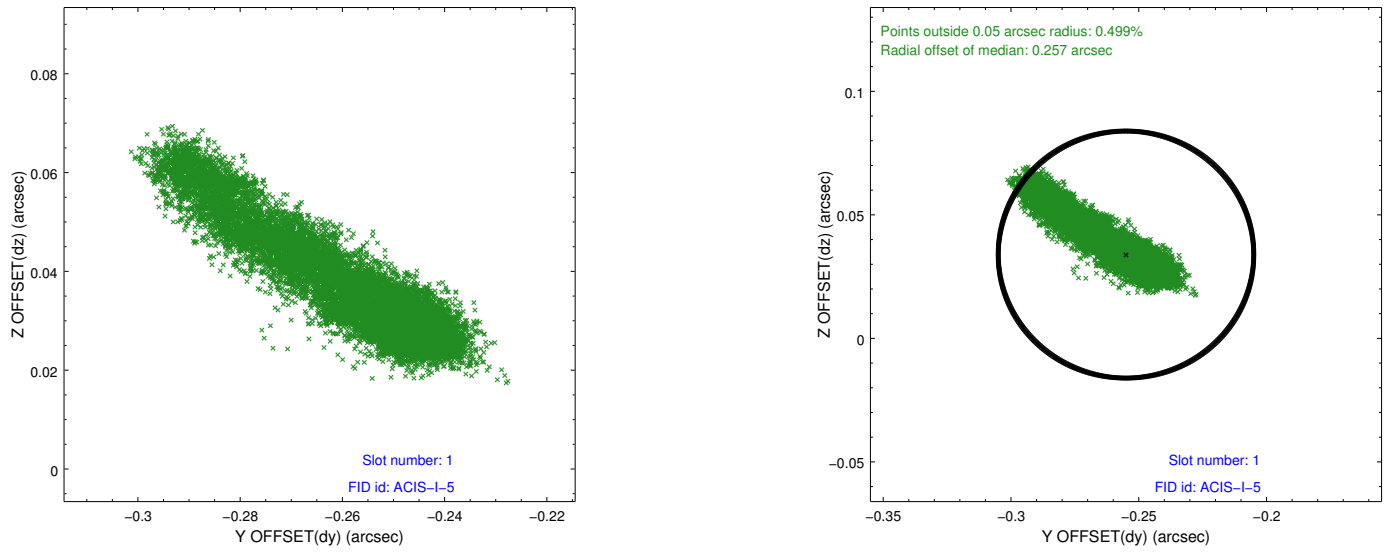


2.5 FID Slots

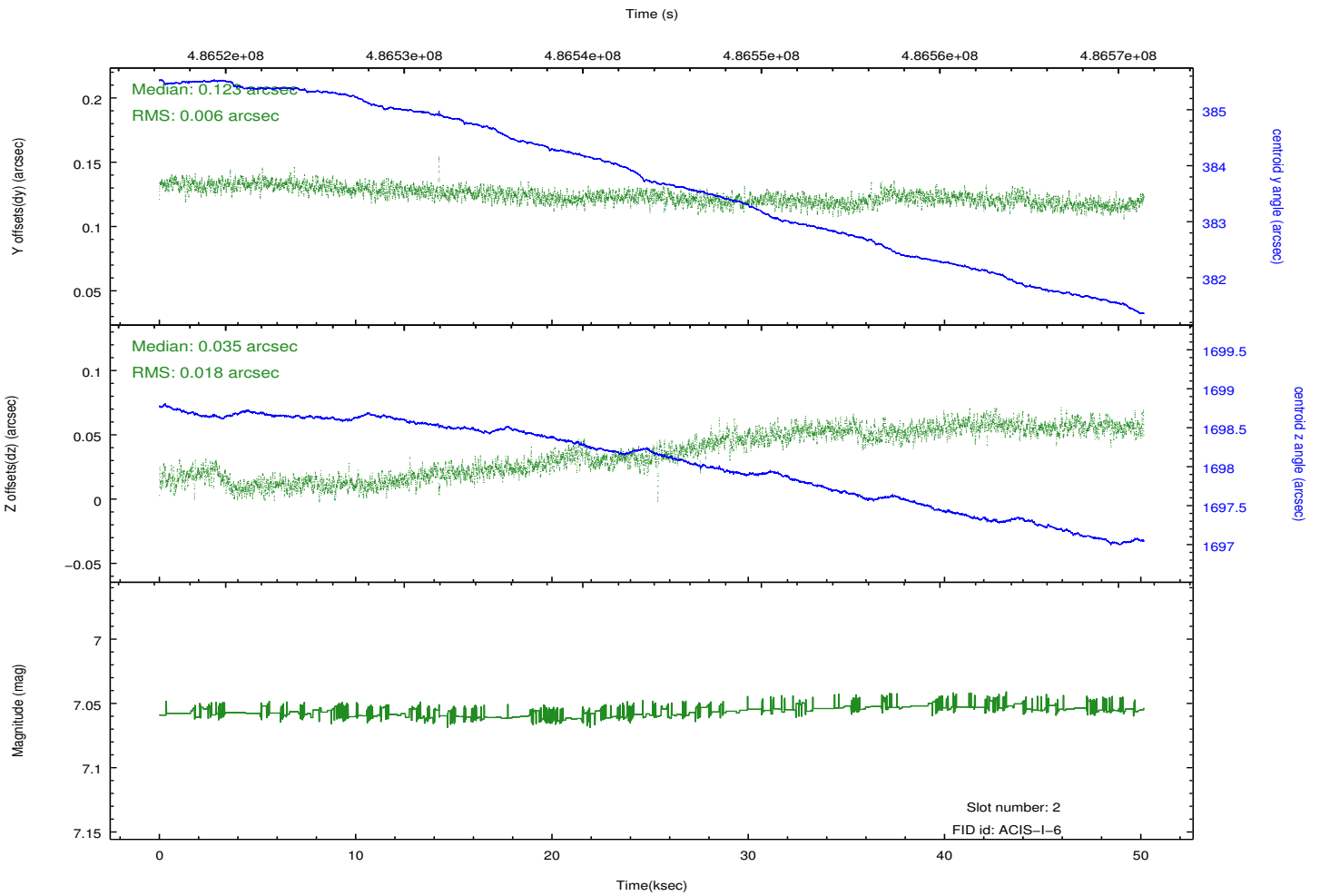
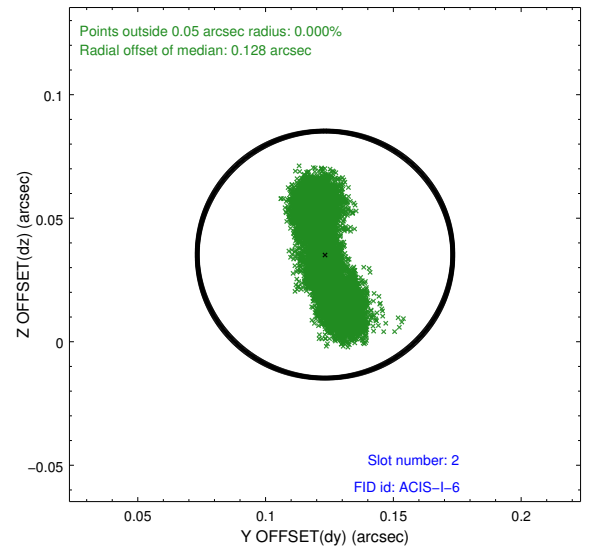
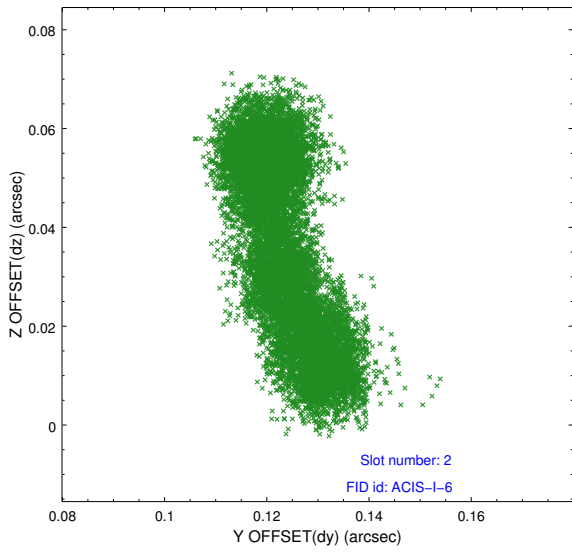
2.5.1 Slot 0



2.5.2 Slot 1



2.5.3 Slot 2



A Summary

A.1 Status

V&V Scientist	Jen Lauer
V&V Date (YYYY-MM-DD)	2014.12.11
V&V Edition	1
V&V Disposition and Status	OK
V&V Charge Time	50.089759424865

A.2 Comments

Roll constraint met.

=====

These data have been reprocessed with new aspect alignment calibration files that correct small mean offsets (up to 0.4 arcsecs) and improve overall astrometric accuracy. The new calibration was determined using data from the time period being reprocessed and was performed using cross-correlation of X-ray sources with radio and optical counterparts.