

V&V Reference Report

L2 ASCDS Version : 10.3

Observation 16186 - L2 Version 1
Chandra X-Ray Center

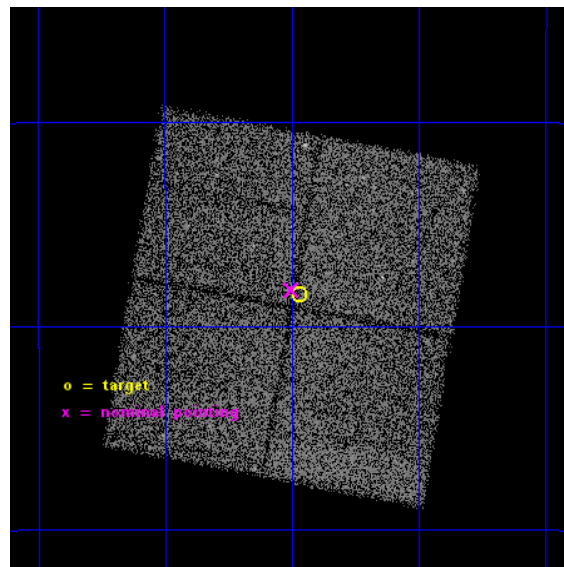
L2 Processing Date : Nov 3 2014

Contents

1	Front	2
2	OBI	3
2.1	OBI	3
2.1.1	Images	3
2.1.2	Bias	3
2.1.3	Parameters	4
2.1.4	Events	4
2.2	Compared Parameters	5
2.3	Aspect	6
2.4	Star Slots	9
2.4.1	Slot 3	9
2.4.2	Slot 4	10
2.4.3	Slot 5	11
2.4.4	Slot 6	12
2.4.5	Slot 7	13
2.5	FID Slots	14
2.5.1	Slot 0	14
2.5.2	Slot 1	15
2.5.3	Slot 2	16
A	Summary	17
A.1	Status	17
A.2	Comments	17

1 Front

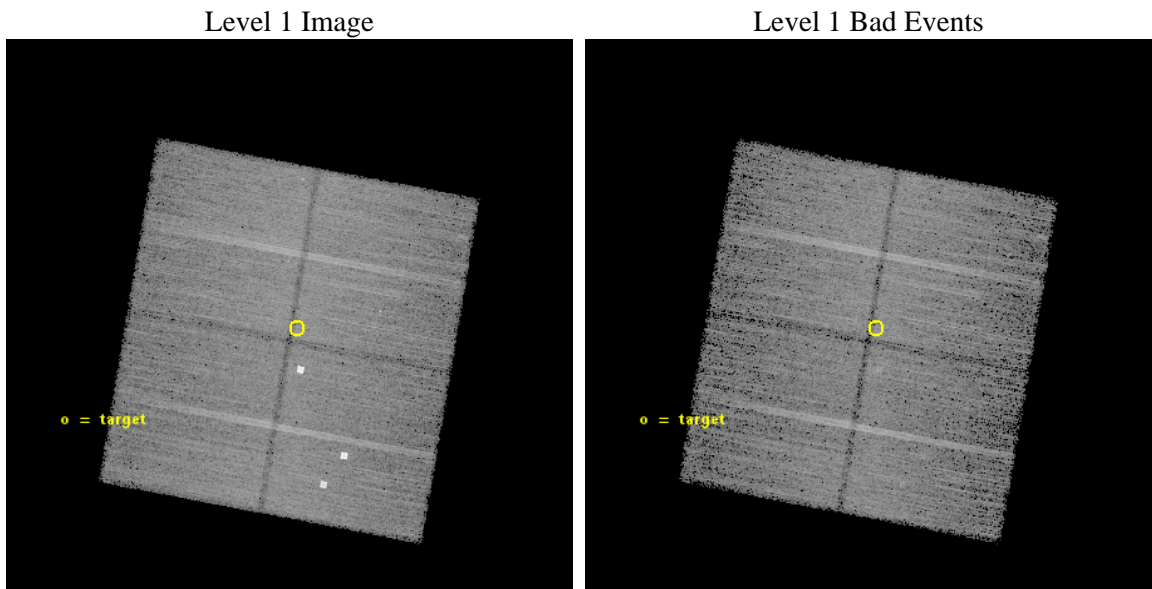
seq_num	901115	Sequence number
obs_id	16186	Observation id
title	The Chandra Deep Field-South: A Peerless Ultradeep Survey for Exploring the Distant X-ray Universe	Proposal title
observer	Prof. W.N. Brandt	Principal investigator
object	Chandra Deep Field-South	Source name
dtcycle	0	
cycle	P	events from which exps? Prim/Second/Both
ra_targ	53.117083	Observer's specified target RA [deg]
dec_targ	-27.807333	Observer's specified target Dec [deg]
ra_nom	53.125298610246	Nominal RA [deg]
dec_nom	-27.803547699999	Nominal Dec [deg]
roll_nom	10.212507706199	Nominal Roll [deg]
revision	1	Processing version of data
ontime	29790.528766096	Sum of GTIs [s]
livetime	29401.293576298	Livetime [s]
ontime0	29790.405646086	Sum of GTIs [s]
ontime1	29787.305645823	Sum of GTIs [s]
ontime2	29790.487726092	Sum of GTIs [s]
ontime3	29790.528766096	Sum of GTIs [s]
l2events	60743	Number of level 2 events



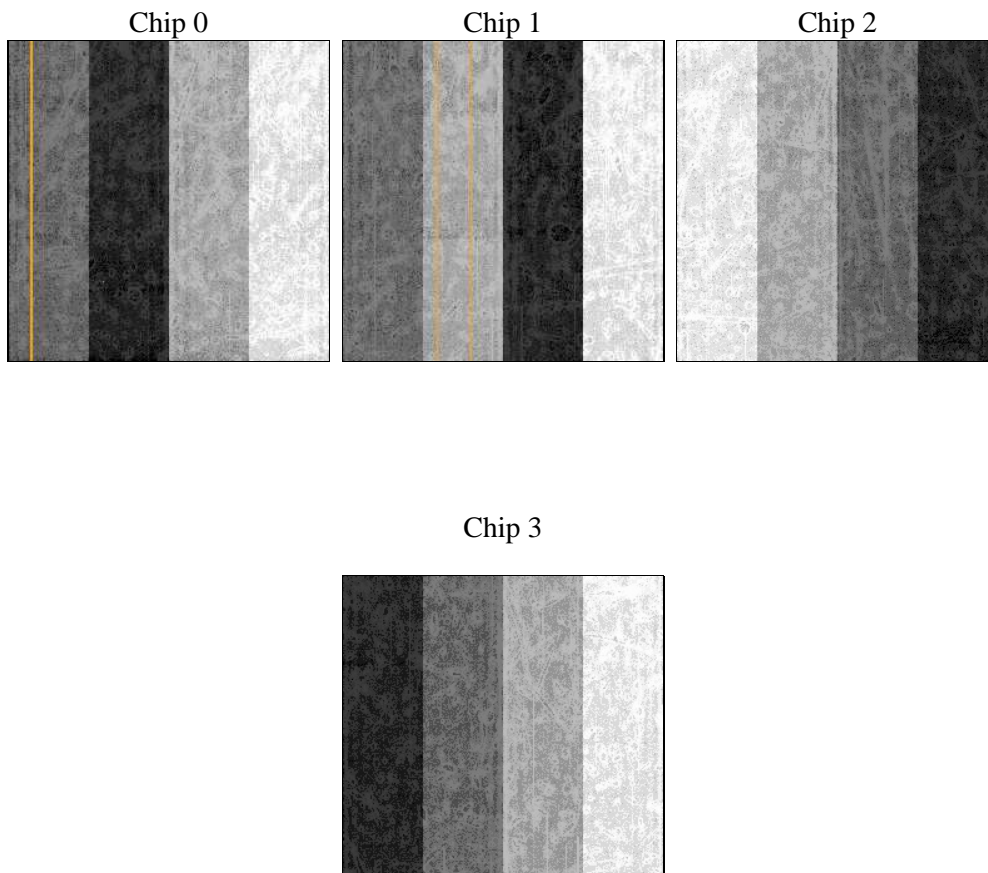
2 OBI

2.1 OBI

2.1.1 Images



2.1.2 Bias



2.1.3 Parameters

obi_num	0	Obi number	sched_exp_time	30000.000000	[s] Scheduled observation exposure time
ascdsver	10.3	Processing system revision	ontime	29790.528766096	Sum of GTIs [s]
caldsver	4.6.4	 	ontime0	29790.405646086	Sum of GTIs [s]
date	2014-11-03T11:51:11	Date and time of file creation	ontime1	29787.305645823	Sum of GTIs [s]
revision	1	Processing version of data	ontime2	29790.487726092	Sum of GTIs [s]
			ontime3	29790.528766096	Sum of GTIs [s]
			l1events	669286	Number of level 1 events

2.1.4 Events

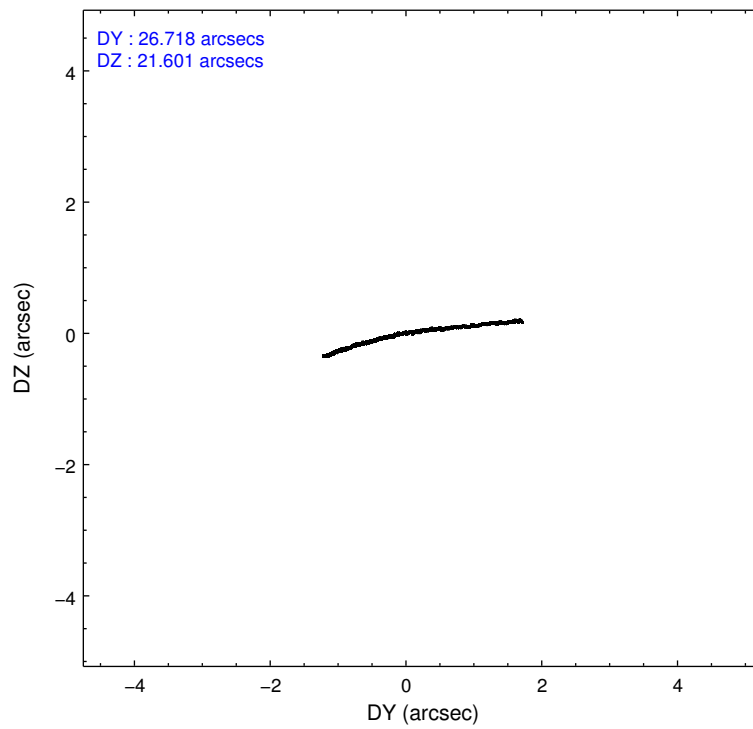
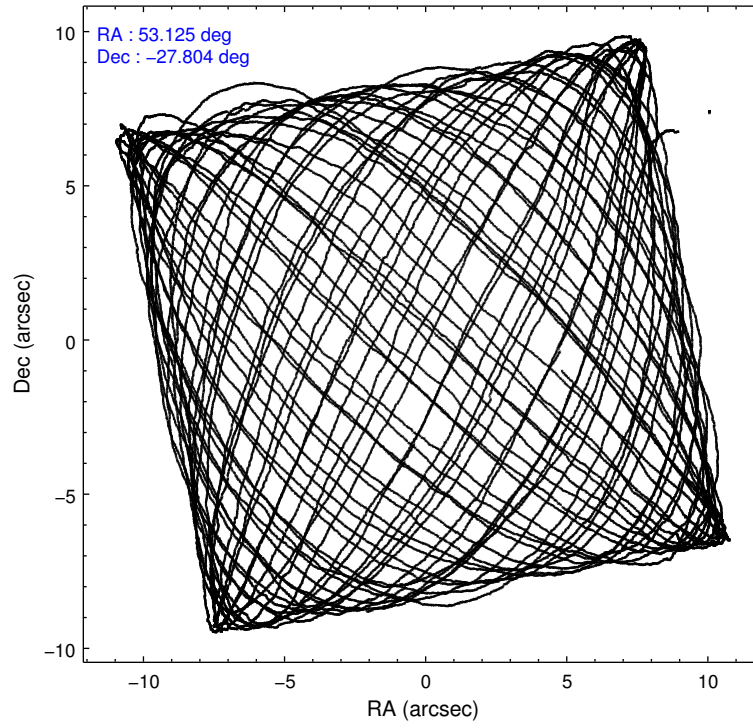
	ccd 0	ccd 1	ccd 2	ccd 3
level 1 events	148461	180720	172364	167741
rejected events	128322	137460	150884	150436
rejected %	86%	76%	87%	89%

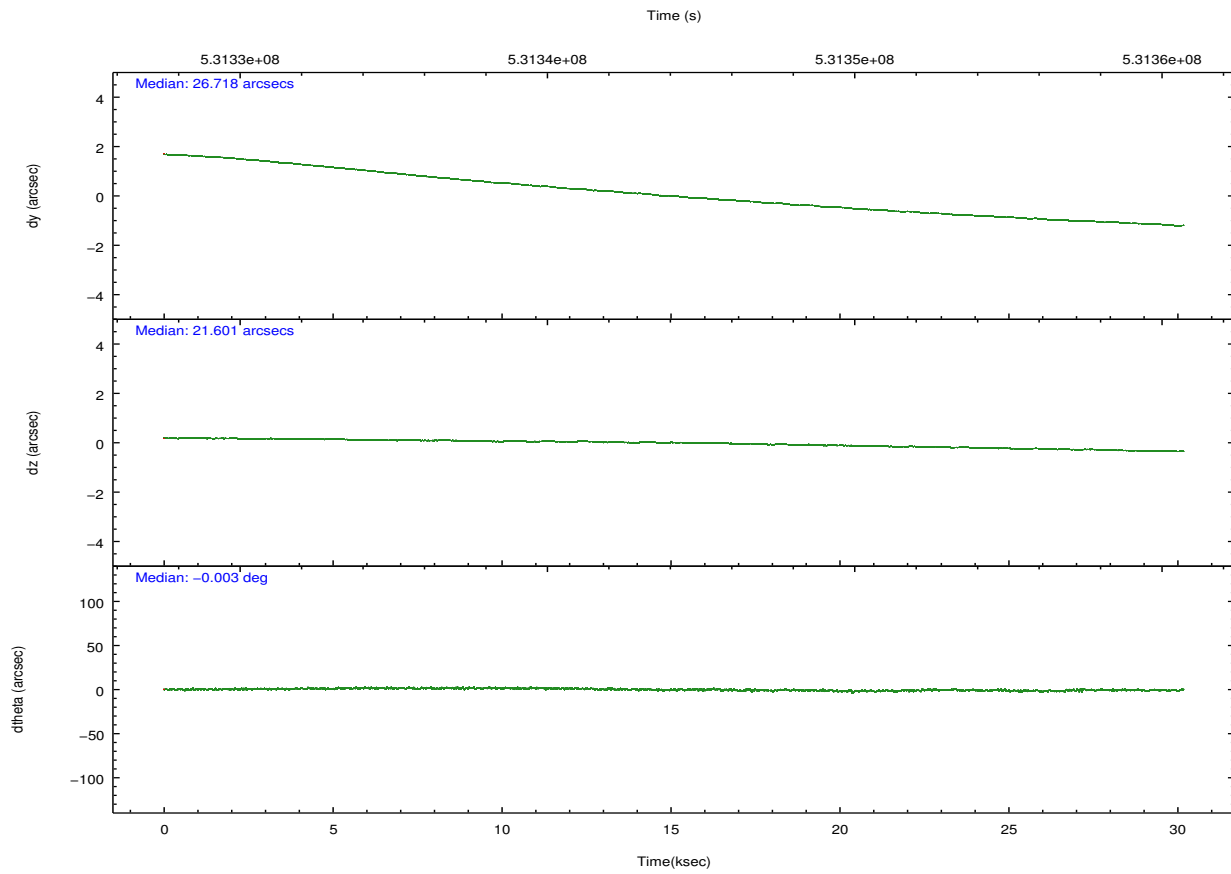
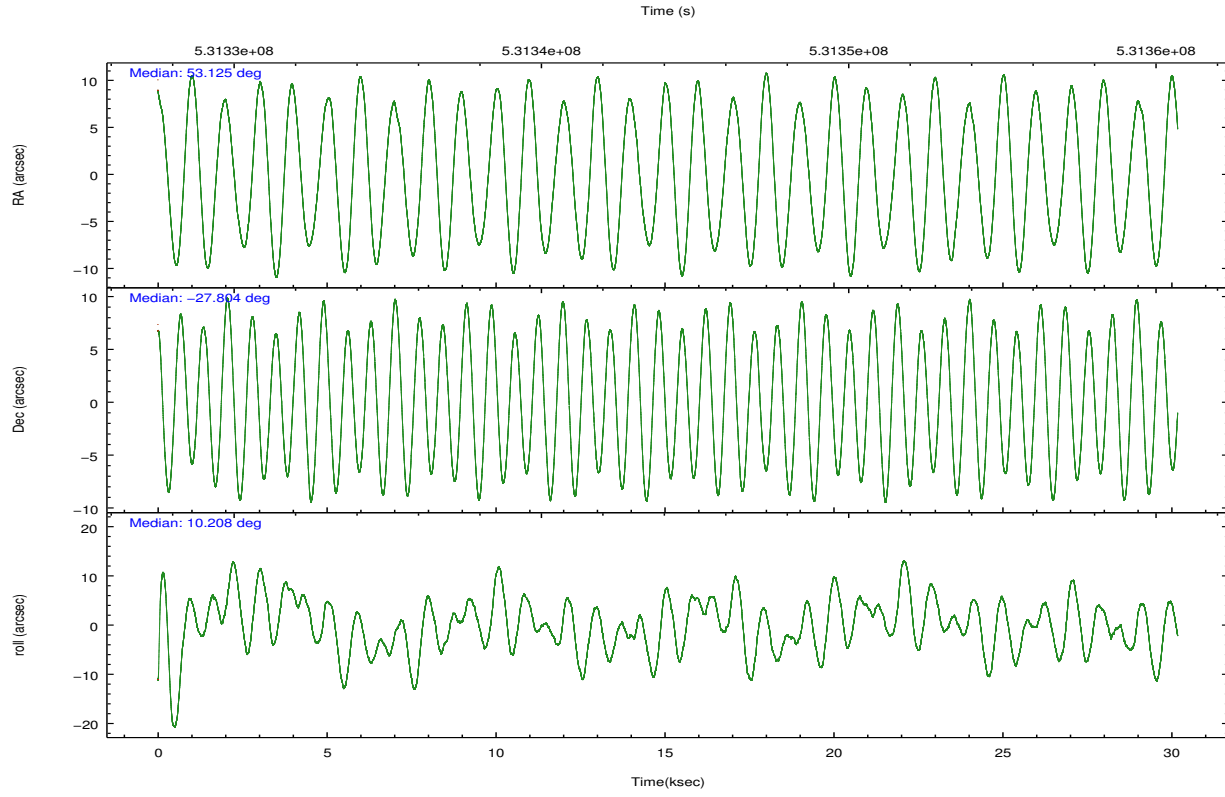
	ccd 0	ccd 1	ccd 2	ccd 3
grade 0 events	7290	30211	7978	6173
	4%	16%	4%	3%
grade 1 events	96	194	109	92
	0%	0%	0%	0%
grade 2 events	5635	5073	5815	4123
	3%	2%	3%	2%
grade 3 events	1782	1847	1753	1743
	1%	1%	1%	1%
grade 4 events	1683	1867	2225	1716
	1%	1%	1%	1%
grade 5 events	6902	7251	6577	7720
	4%	4%	3%	4%
grade 6 events	3750	4271	3715	3554
	2%	2%	2%	2%
grade 7 events	121323	130006	144192	142620
	81%	71%	83%	85%

2.2 Compared Parameters

Parameter	Planned	Actual	Parameter	Planned	Actual
Instrument	ACIS	ACIS	Obspar format version number	7	7
Detector	ACIS-0123	ACIS-0123	Obspar file type	PREDICTED	ACTUAL
Grating	NONE	NONE	Obspar update status	NONE	UPDATED
Data mode	VFAINT	VFAINT	Number of optional ACIS chips dropped	0	0
Observation mode	POINTING	POINTING	On-chip summing requested	N	N
[deg] Pointing RA	53.101531	53.12529861024596	Subarray requested	NONE	NONE
[deg] Pointing Dec	-27.821438	-27.80354769999935	Alternating exposures requested	N	N
[deg] Pointing Roll	9.992741	10.21250770619894	[s] Primary exposure time	0.000000	3.1
[mm] SIM focus pos	-0.782348	-0.7809083437167272			
[mm] SIM defocus	0	0.001439871863259334			
[mm] SIM translation stage pos	-233.592463	-233.5874344608287			
[mm] SIM translation stage offset	0	-0.005018542100998502			
[s] Observation start time (MET)	531329196.184000	531328508.75379			
Observation start date	2014-11-02T15:25:29	2014-11-02T15:15:08			
[s] Observation end time (MET)	531359196.184000	531360305.79306			
Observation end date	2014-11-02T23:45:29	2014-11-03T00:05:05			
Read mode	TIMED	TIMED			

2.3 Aspect





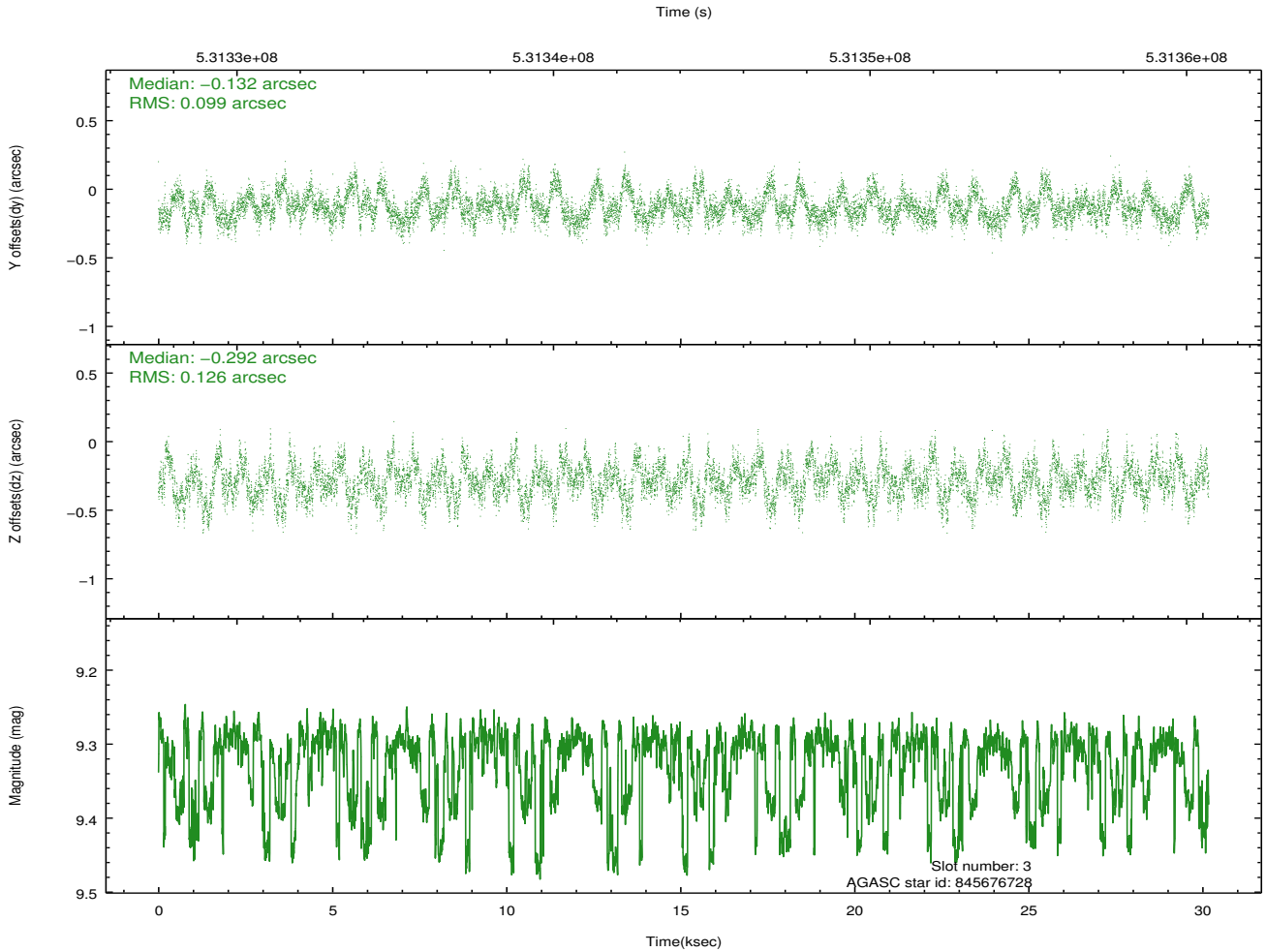
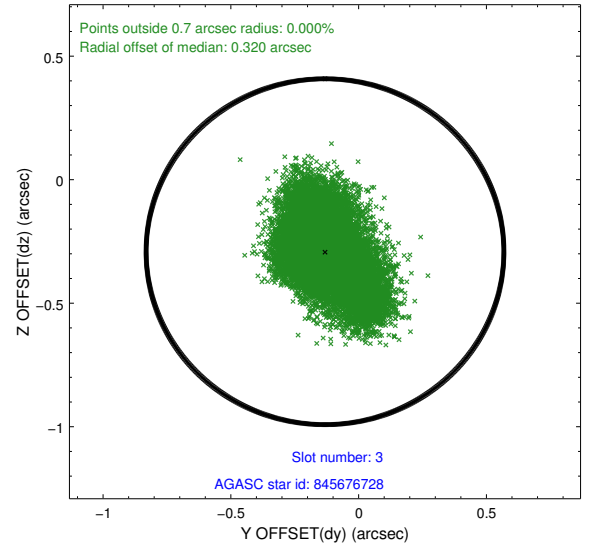
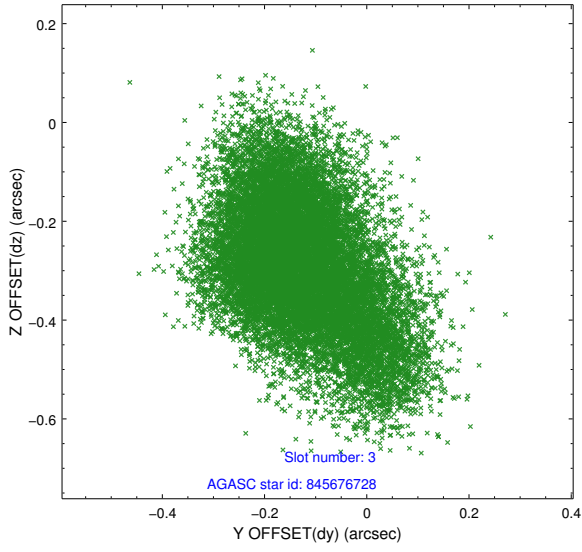
Slot Statistics

slot	status	used	id	mag	n_pts	med_dy	med_dz	dr1	dr2	ra	dec	mean_y	mean_z
0	FID		ACIS-I-2	7.08	7360	-0.221	-0.116	0.017	0.030	0.000000	0.000000	-782.06	-851.82
1	FID		ACIS-I-4	7.15	7361	0.449	0.148	0.026	0.043	0.000000	0.000000	2132.61	1054.61
2	FID		ACIS-I-5	7.16	7361	-0.326	0.036	0.021	0.030	0.000000	0.000000	-1835.92	1052.39
3	GUIDE	used	845676728	9.32	14709	-0.132	-0.292	0.168	0.285	52.877179	-27.664318	-606.21	680.26
4	GUIDE	used	845683408	9.18	14642	0.290	0.305	0.124	0.195	52.484531	-28.338862	-2248.67	-1500.22
5	GUIDE	used	845807880	8.79	14716	-0.253	-0.011	0.108	0.173	53.382027	-27.886093	838.46	-385.09
6	GUIDE	used	845814592	9.02	14718	-0.014	0.001	0.167	0.262	53.853010	-28.336603	2024.22	-2249.04
7	GUIDE	used	845813656	10.13	14611	0.129	-0.009	0.310	0.490	53.922767	-28.083703	2404.43	-1390.89

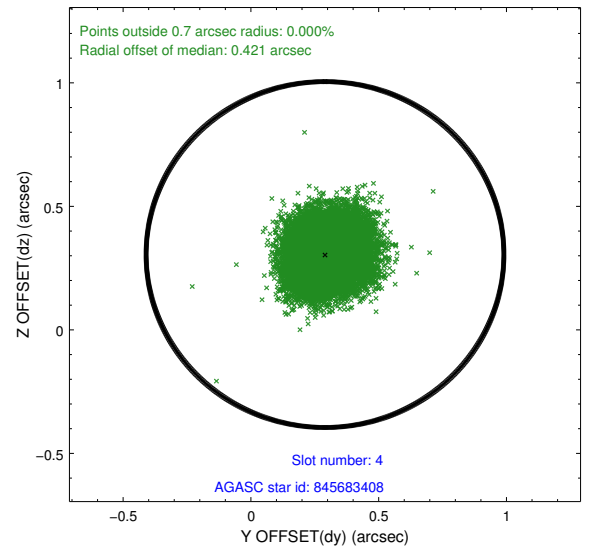
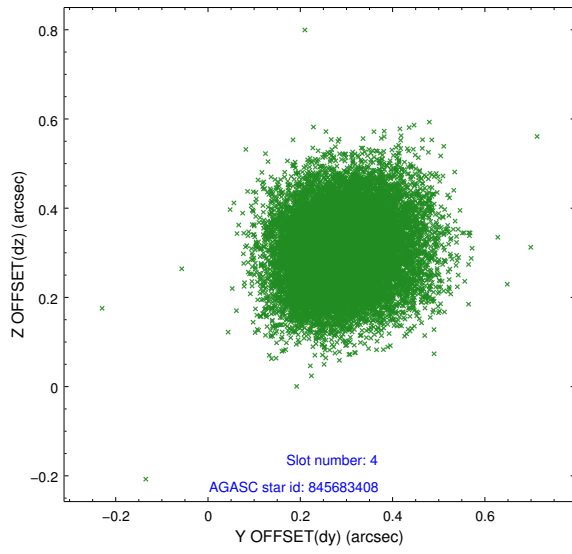
∞

2.4 Star Slots

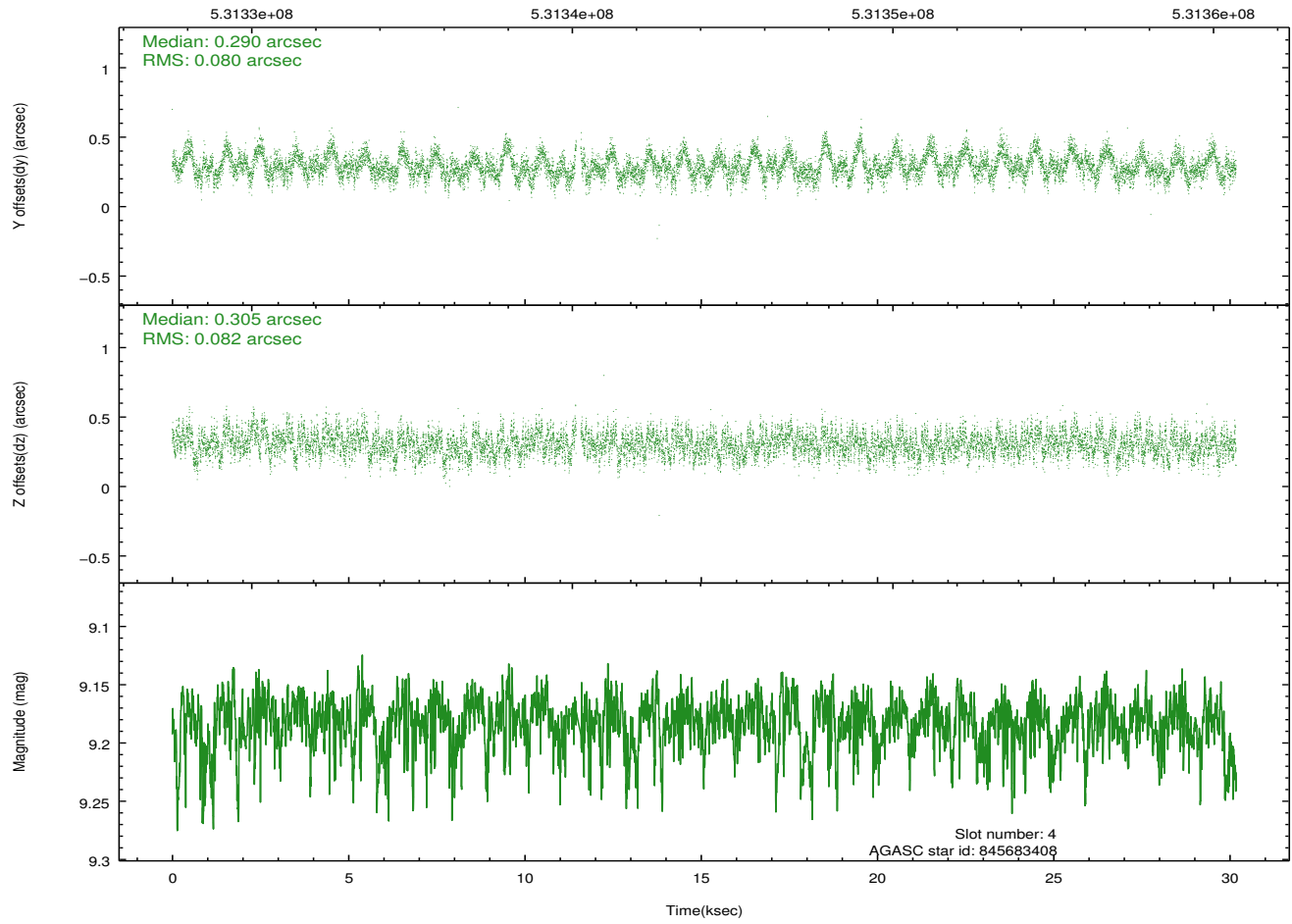
2.4.1 Slot 3



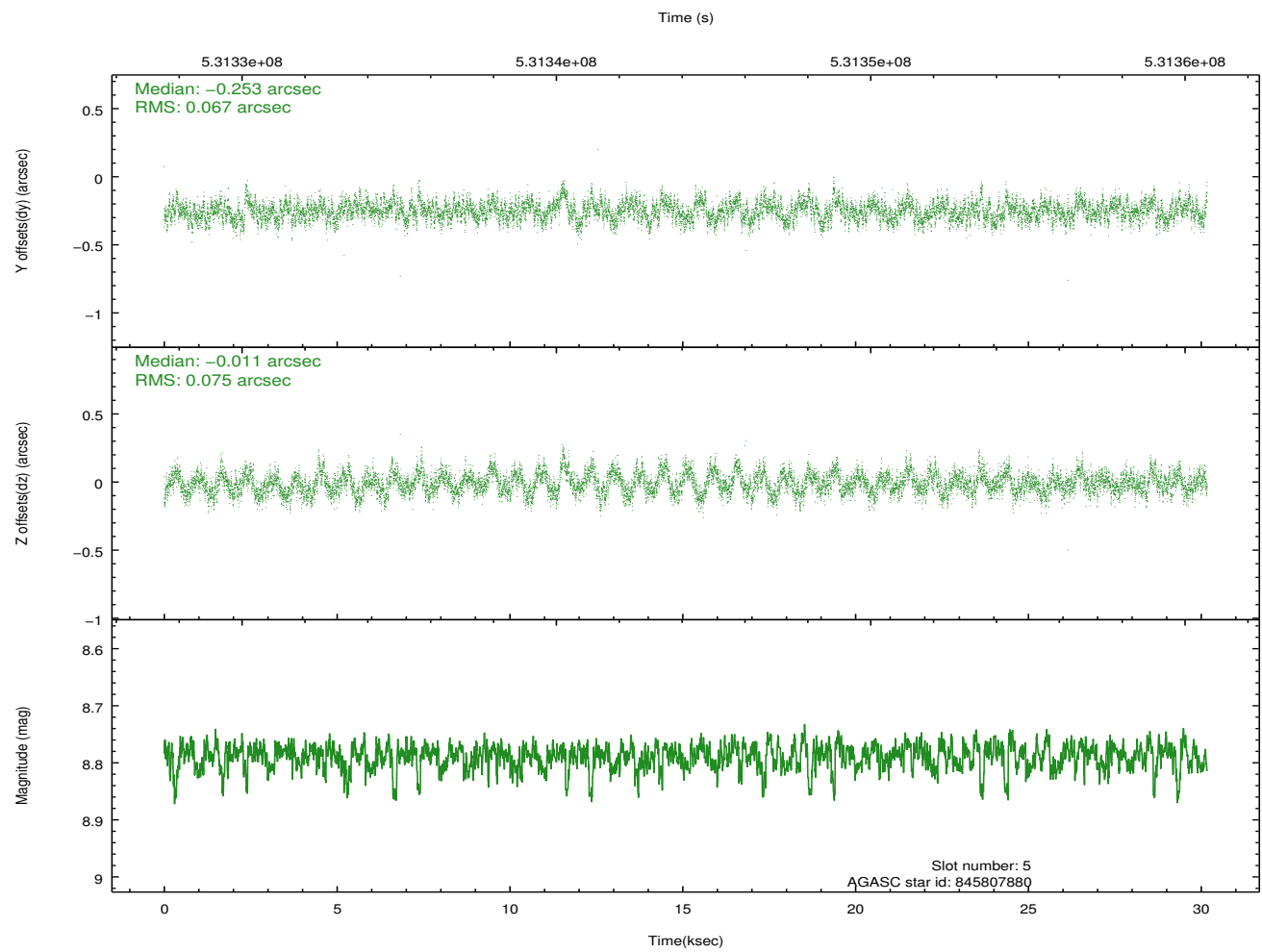
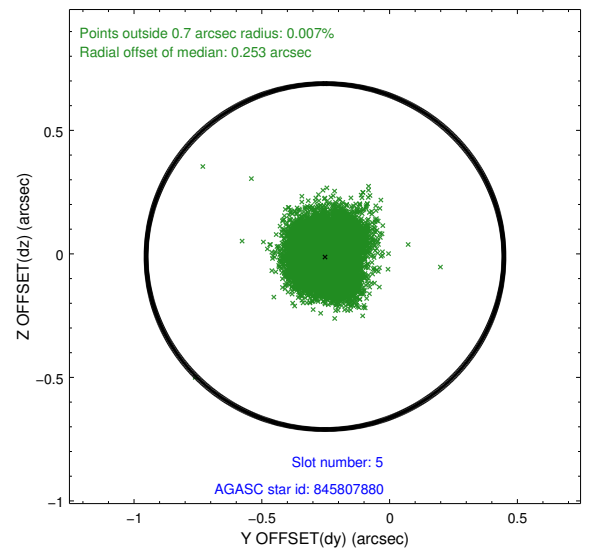
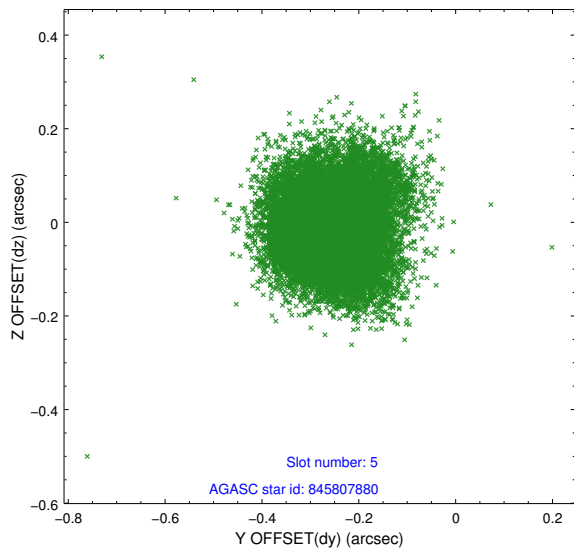
2.4.2 Slot 4



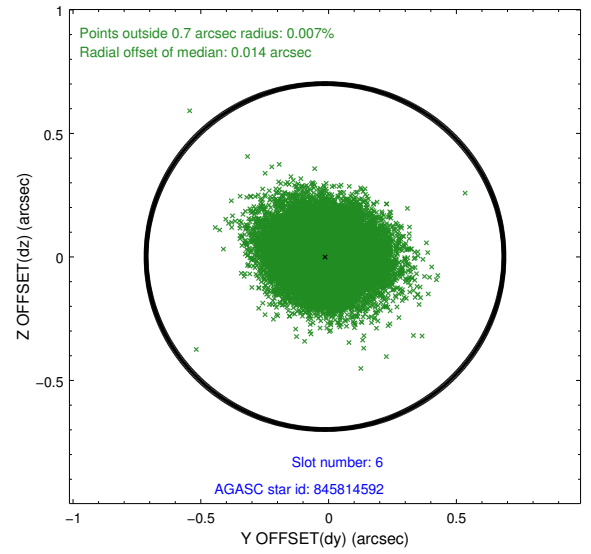
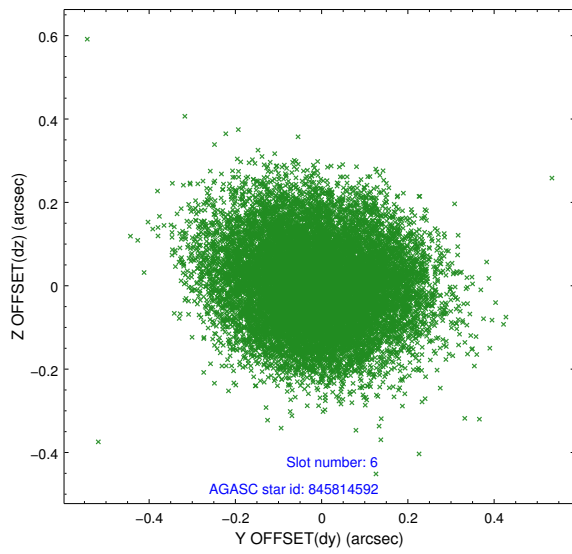
Time (s)



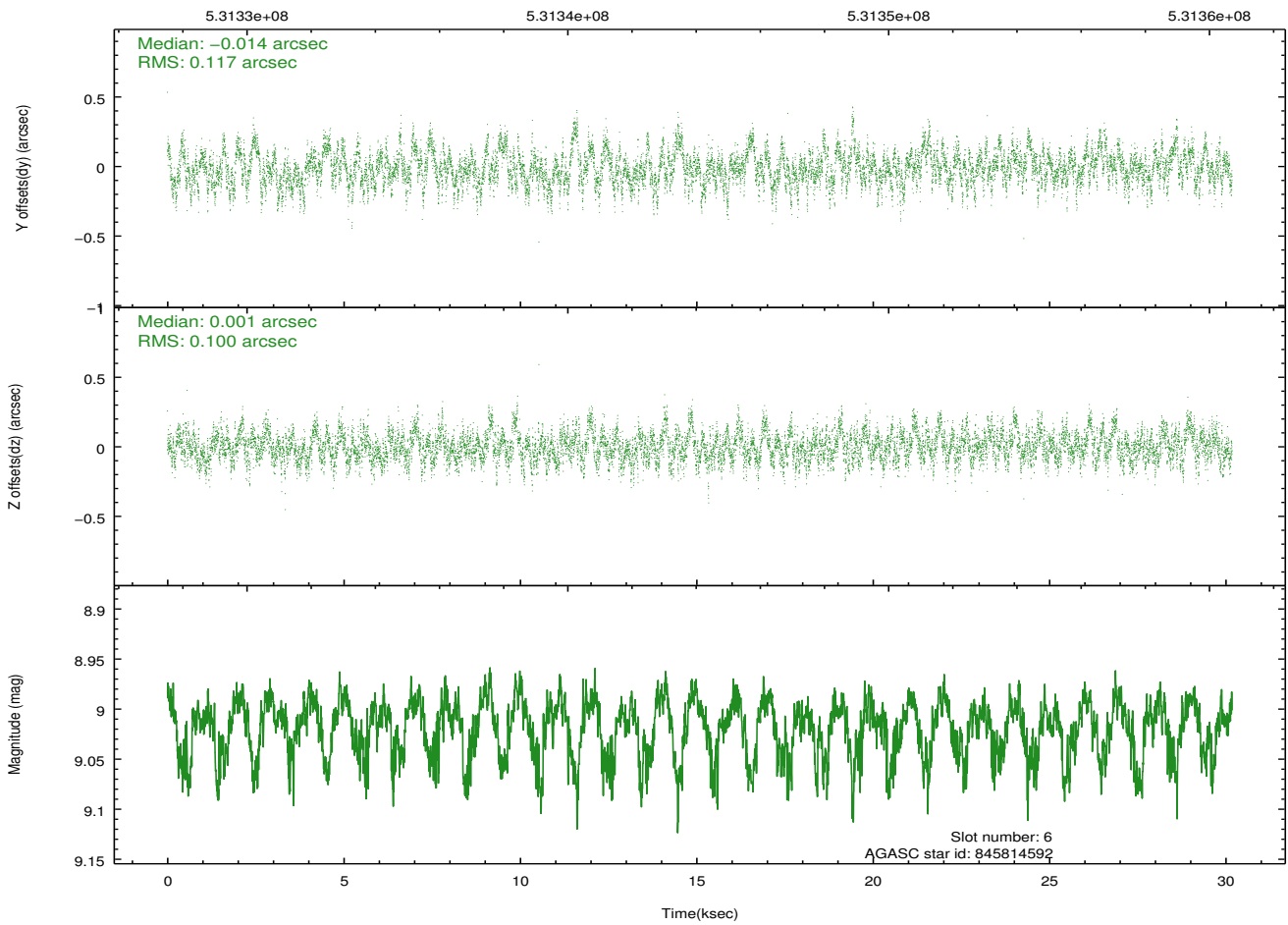
2.4.3 Slot 5



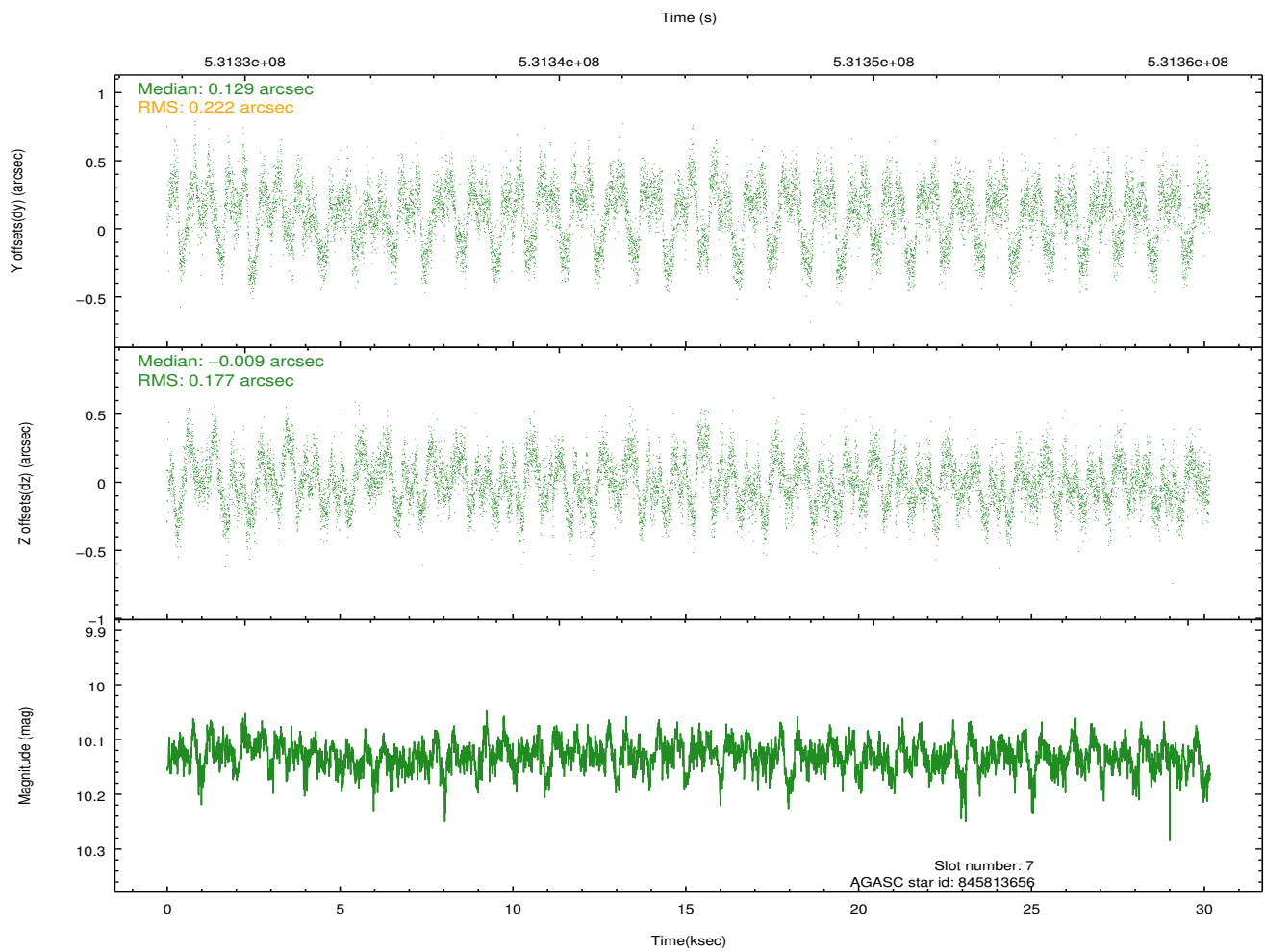
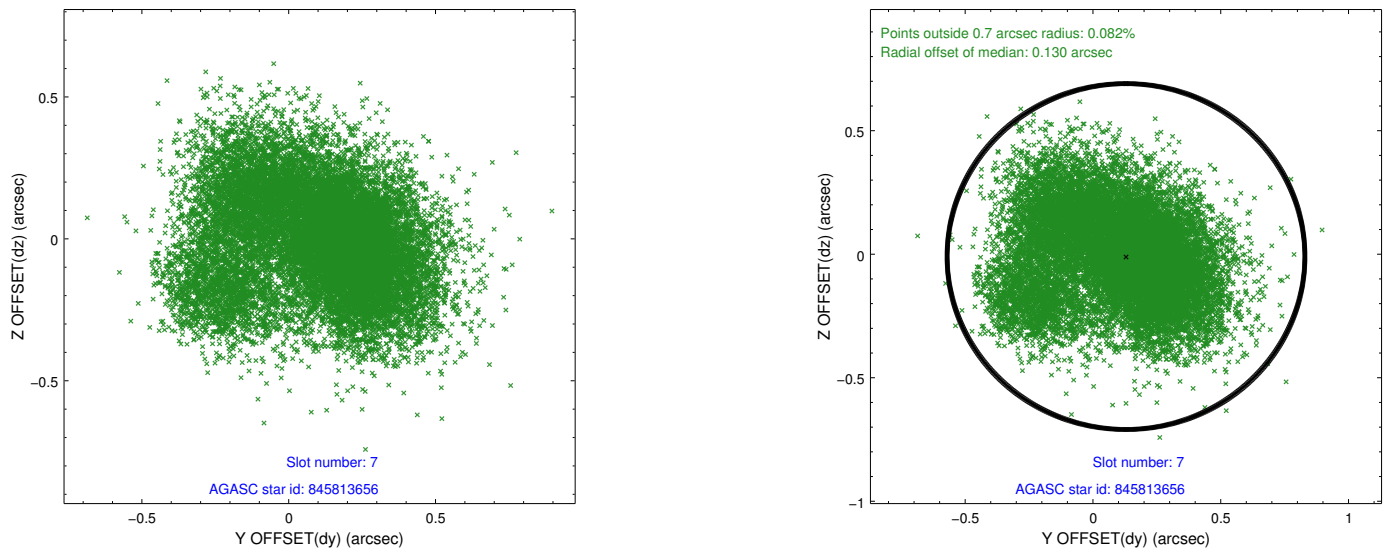
2.4.4 Slot 6



Time (s)

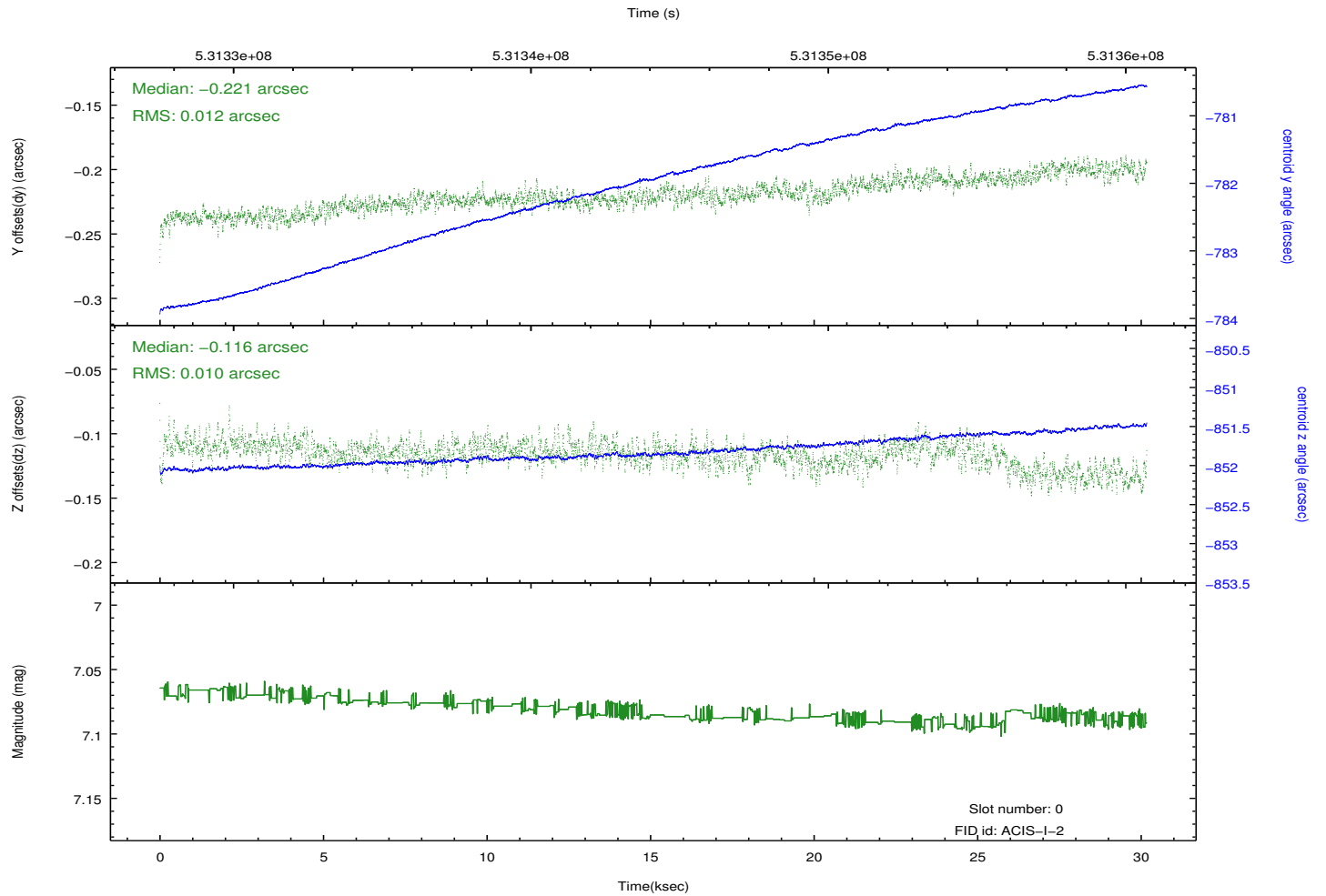
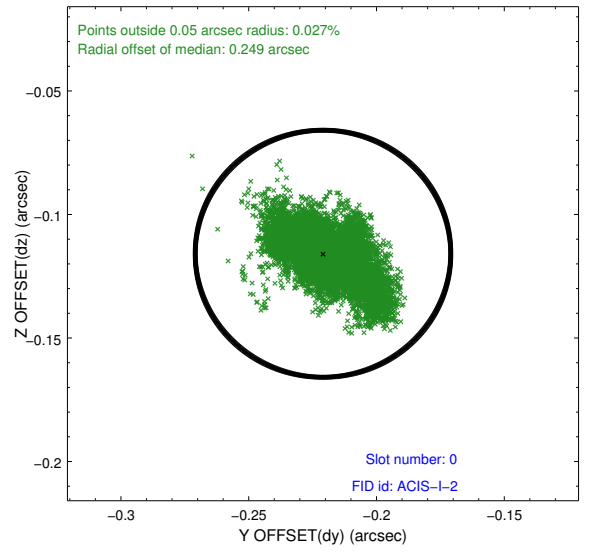
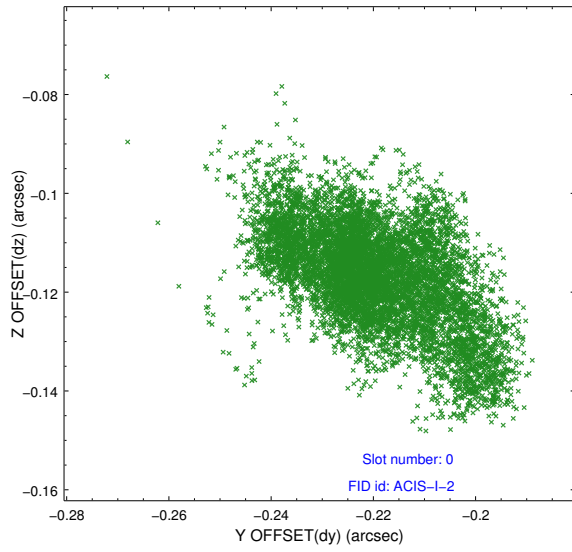


2.4.5 Slot 7

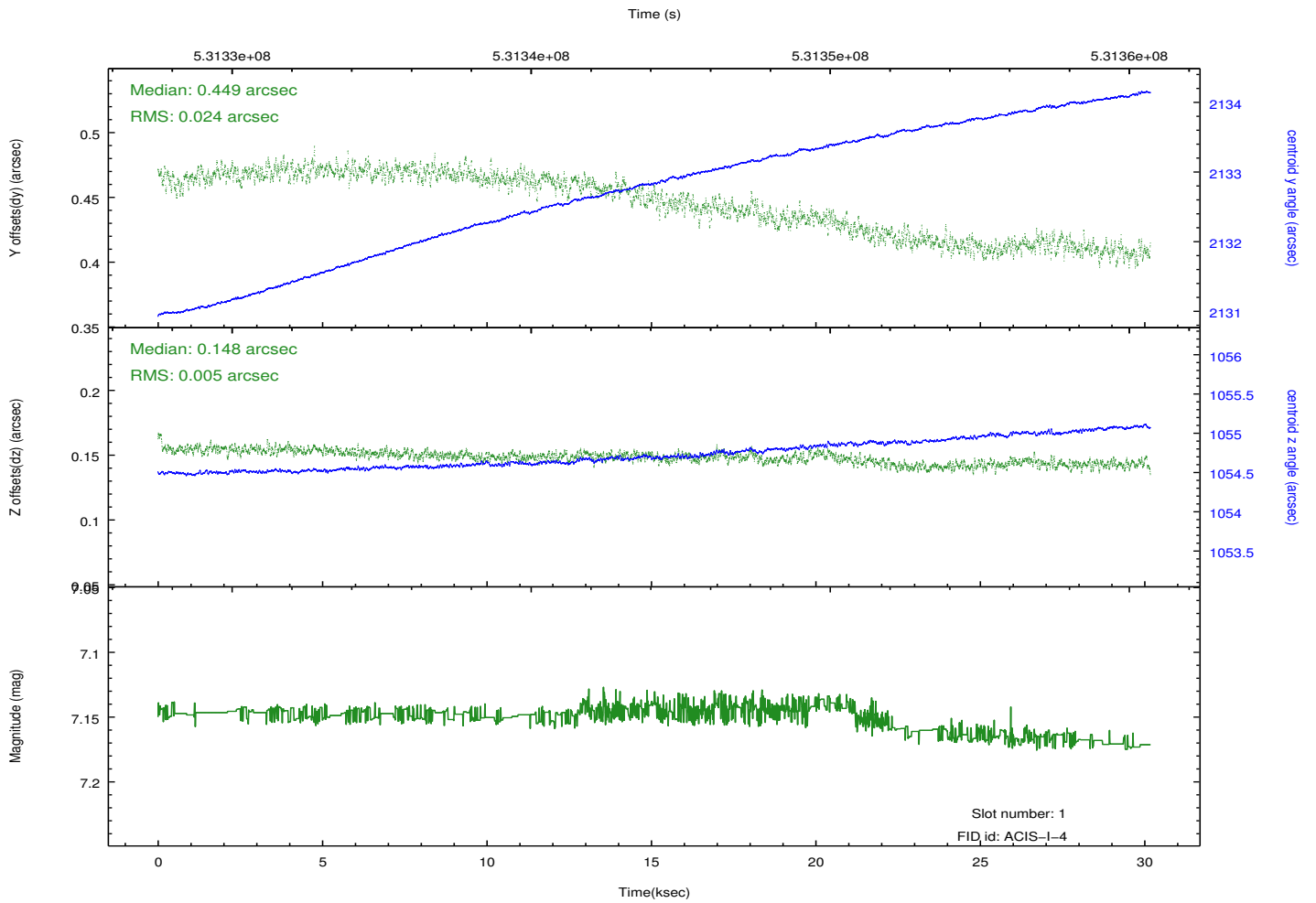
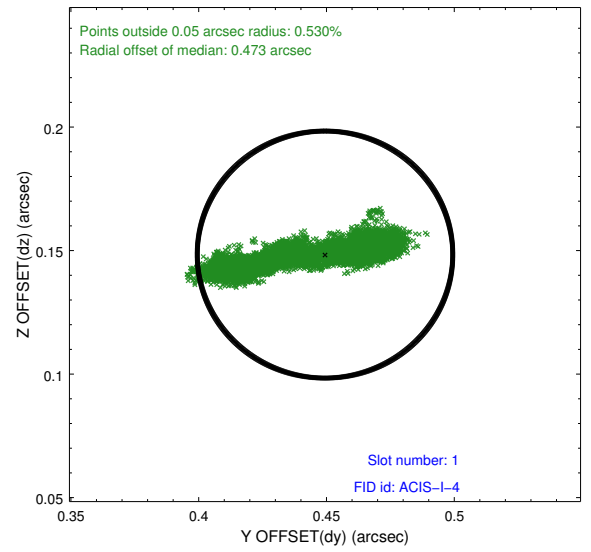
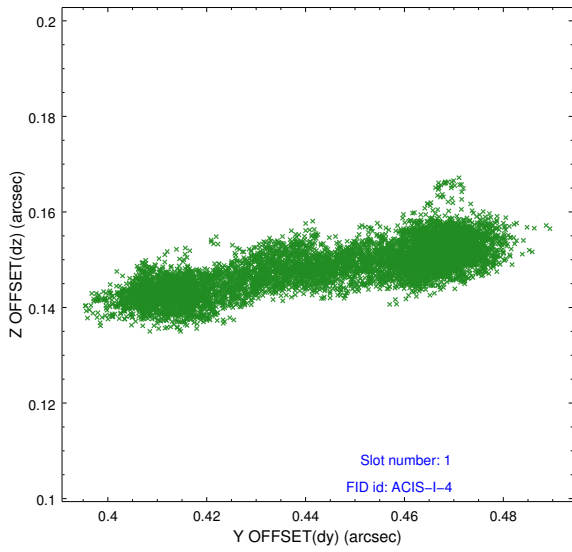


2.5 FID Slots

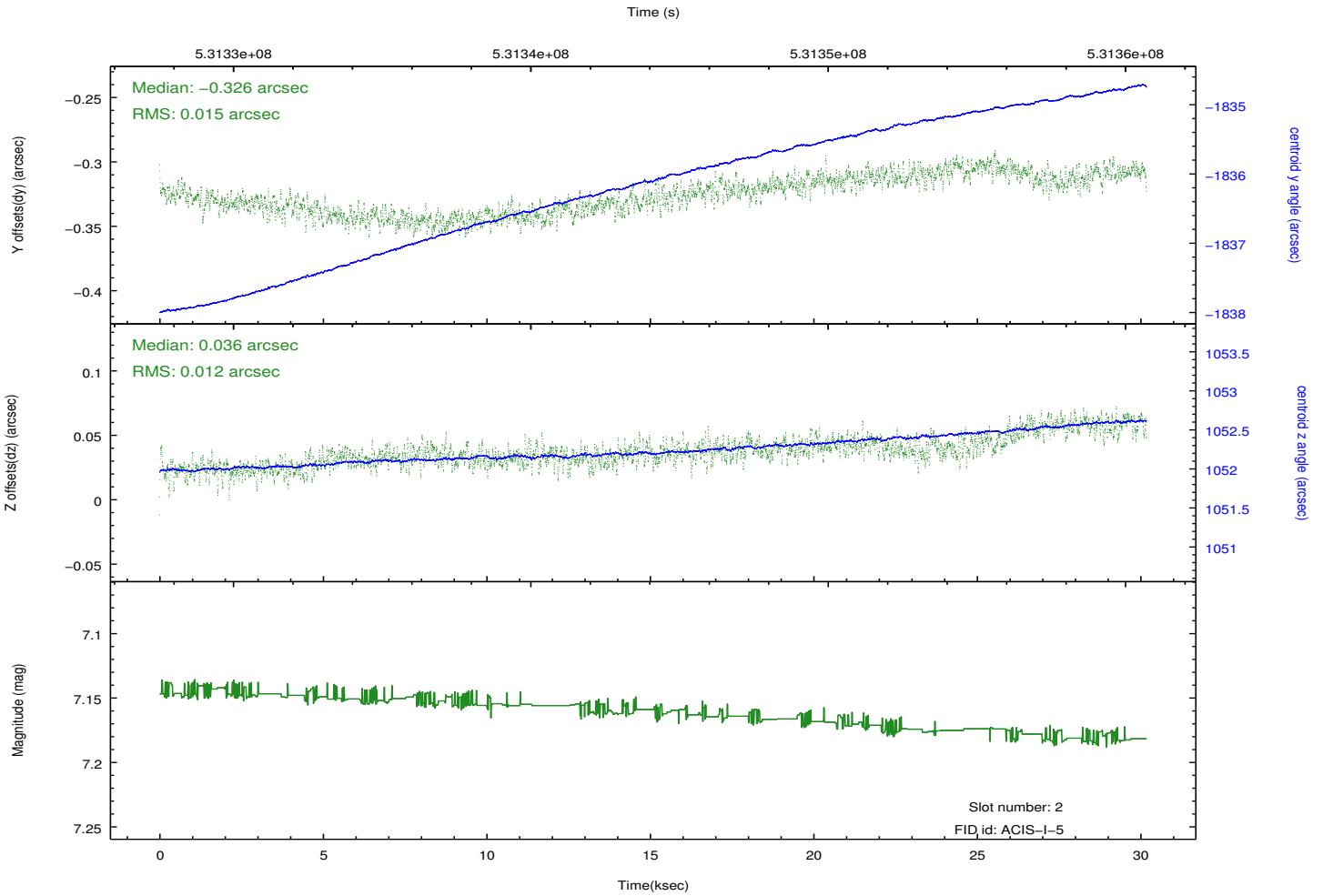
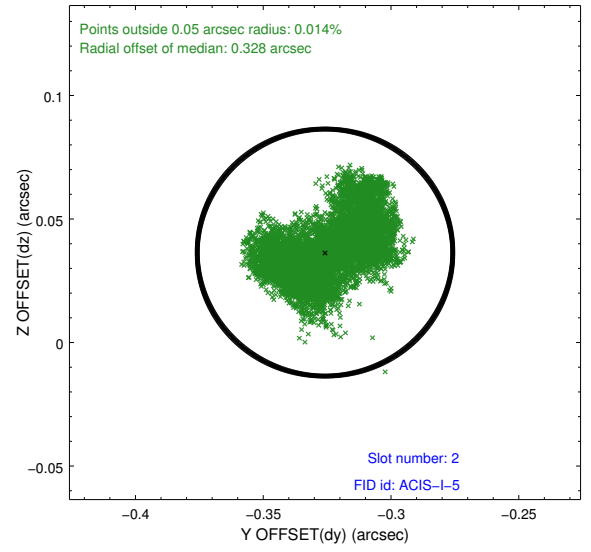
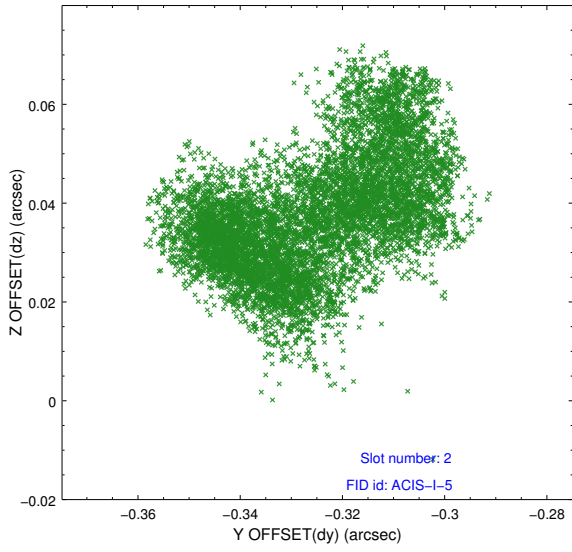
2.5.1 Slot 0



2.5.2 Slot 1



2.5.3 Slot 2



A Summary

A.1 Status

V&V Scientist	Jen Lauer
V&V Date (YYYY-MM-DD)	2014.11.03
V&V Edition	1
V&V Disposition and Status	OK
V&V Charge Time	29.790528766096

A.2 Comments