

V&V Reference Report

L2 ASCDS Version : 10.2.4

Observation 17536 - L2 Version 1
Chandra X-Ray Center

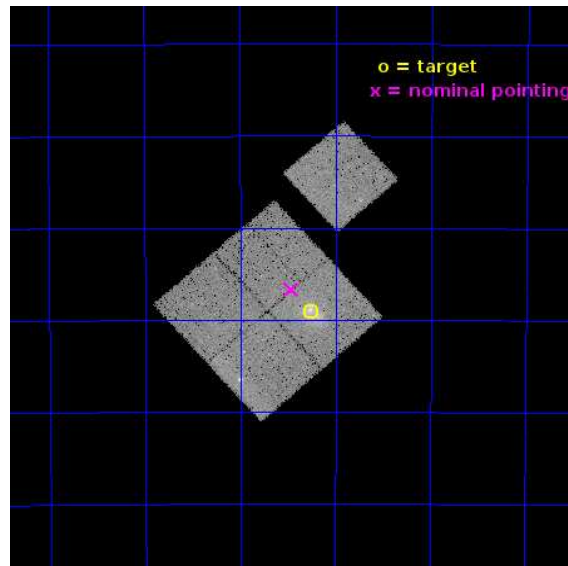
L2 Processing Date : Oct 14 2014

Contents

1	Front	2
2	OBI	3
2.1	OBI	3
2.1.1	Images	3
2.1.2	Bias	3
2.1.3	Parameters	4
2.1.4	Events	4
2.2	Compared Parameters	5
2.3	Aspect	6
2.4	Star Slots	9
2.4.1	Slot 3	9
2.4.2	Slot 4	10
2.4.3	Slot 5	11
2.4.4	Slot 6	12
2.4.5	Slot 7	13
2.5	FID Slots	14
2.5.1	Slot 0	14
2.5.2	Slot 1	15
2.5.3	Slot 2	16
A	Summary	17
A.1	Status	17
A.2	Comments	17

1 Front

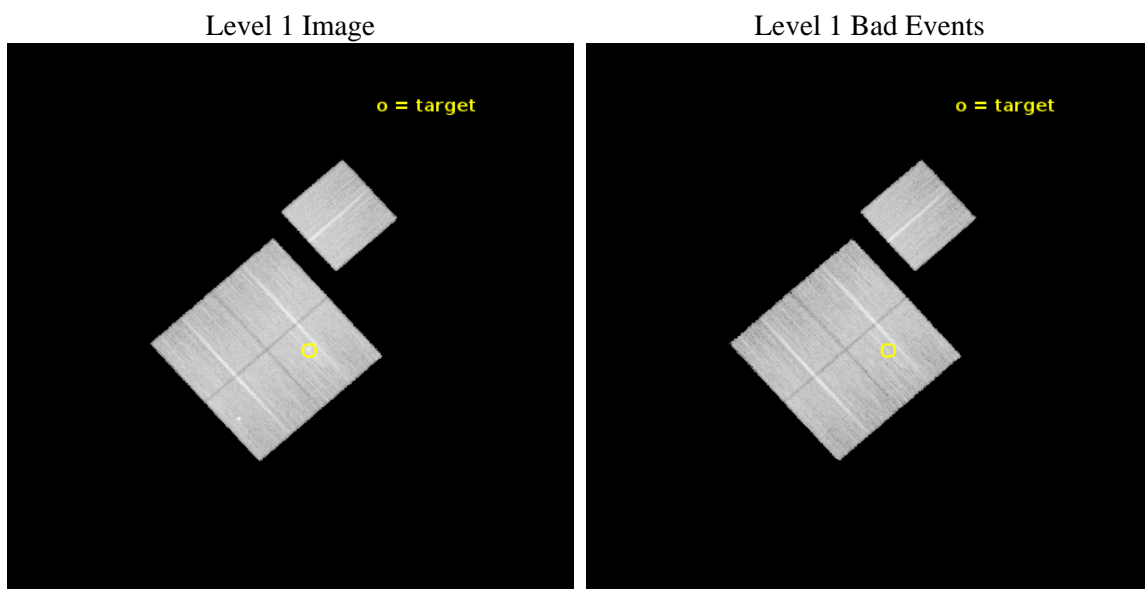
seq_num	801434	Sequence number
obs_id	17536	Observation id
title	Do Cluster Mergers Halt Cooling Flows?	Proposal title
observer	Professor Gordon Garmire	Principal investigator
object	SPT-CLJ0411-4819	Source name
dtcycle	0	
cycle	P	events from which exps? Prim/Second/Both
ra_targ	62.81625	Observer's specified target RA [deg]
dec_targ	-48.318111	Observer's specified target Dec [deg]
ra_nom	62.865713756659	Nominal RA [deg]
dec_nom	-48.277835378272	Nominal Dec [deg]
roll_nom	48.245615383205	Nominal Roll [deg]
revision	1	Processing version of data
ontime	33836.500260234	Sum of GTIs [s]
livetime	33394.401474265	Livetime [s]
ontime0	33836.500260234	Sum of GTIs [s]
ontime1	33830.218239307	Sum of GTIs [s]
ontime2	33836.500260234	Sum of GTIs [s]
ontime3	33836.500260234	Sum of GTIs [s]
ontime6	33836.500260234	Sum of GTIs [s]
l2events	94031	Number of level 2 events



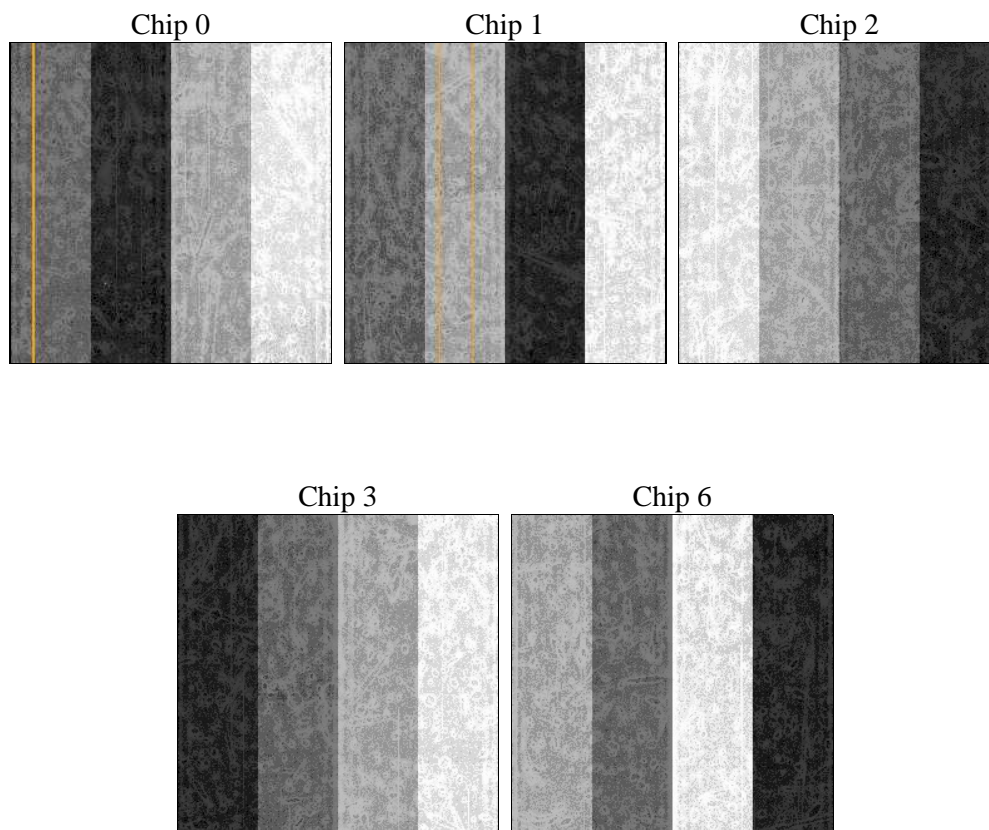
2 OBI

2.1 OBI

2.1.1 Images



2.1.2 Bias



2.1.3 Parameters

obi_num	0	Obi number	sched_exp_time	33750.000000	[s] Scheduled observation exposure time
ascdsver	10.2.4	Processing system revision	ontime	33836.500260234	Sum of GTIs [s]
caldbver	4.6.3	 	ontime0	33836.500260234	Sum of GTIs [s]
date	2014-10-15T02:59:40	Date and time of file creation	ontime1	33830.218239307	Sum of GTIs [s]
revision	1	Processing version of data	ontime2	33836.500260234	Sum of GTIs [s]
			ontime3	33836.500260234	Sum of GTIs [s]
			ontime6	33836.500260234	Sum of GTIs [s]
			l1events	840730	Number of level 1 events

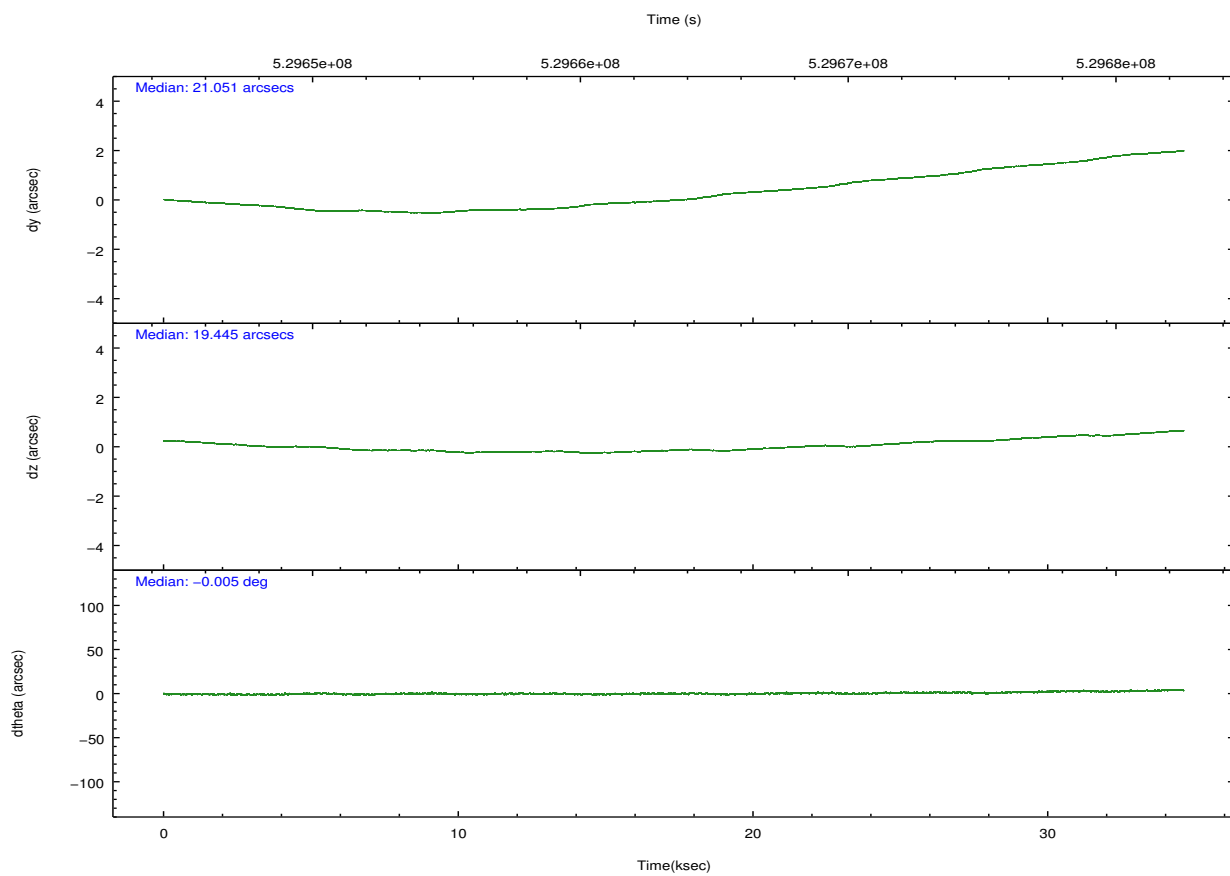
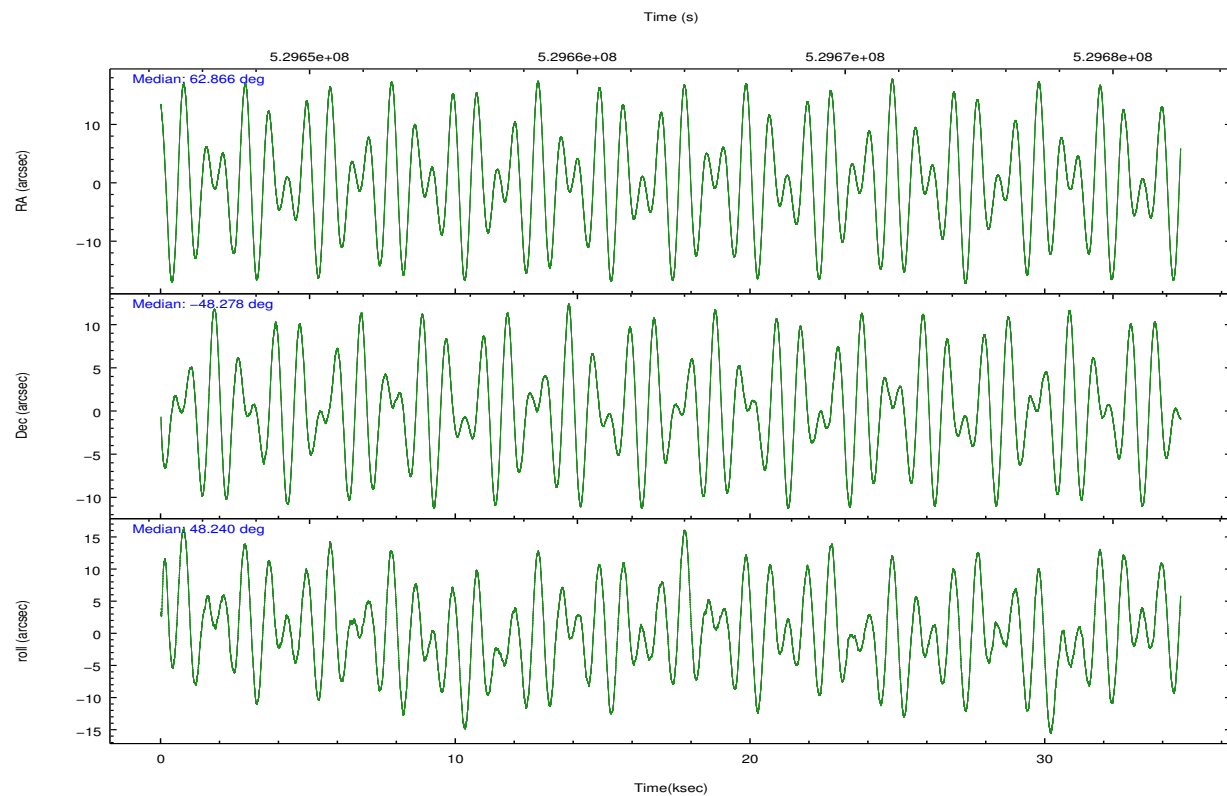
2.1.4 Events

	ccd 0	ccd 1	ccd 2	ccd 3	ccd 6		ccd 0	ccd 1	ccd 2	ccd 3	ccd 6
level 1 events	158051	161225	172904	179488	169062	grade 0 events	6880	8617	6820	11554	7111
rejected events	137787	137680	152833	154352	148139		4%	5%	3%	6%	4%
rejected %	87%	85%	88%	85%	87%	grade 1 events	94	71	95	117	83
							0%	0%	0%	0%	0%
						grade 2 events	5091	5677	5244	4898	4769
							3%	3%	3%	2%	2%
						grade 3 events	2102	2171	2009	2176	2117
							1%	1%	1%	1%	1%
						grade 4 events	1984	2164	2063	2207	2046
							1%	1%	1%	1%	1%
						grade 5 events	8466	8680	7941	9314	8779
							5%	5%	4%	5%	5%
						grade 6 events	4207	4917	3935	4302	4881
							2%	3%	2%	2%	2%
						grade 7 events	129227	128928	144797	144920	139276
							81%	79%	83%	80%	82%

2.2 Compared Parameters

Parameter	Planned	Actual	Parameter	Planned	Actual
Instrument	ACIS	ACIS	Obspar format version number	7	7
Detector	ACIS-01236	ACIS-01236	Obspar file type	PREDICTED	ACTUAL
Grating	NONE	NONE	Obspar update status	NONE	UPDATED
Data mode	VFAINT	VFAINT	CCD I0 on	Y	Y
Observation mode	POINTING	POINTING	CCD I1 on	Y	Y
[deg] Pointing RA	62.857438	62.86571375665869	CCD I2 on	Y	Y
[deg] Pointing Dec	-48.304868	-48.27783537827212	CCD I3 on	Y	Y
[deg] Pointing Roll	48.030751	48.24561538320491	CCD S0 on	N	N
[mm] SIM focus pos	-0.782348	-0.7809083437167272	CCD S1 on	N	N
[mm] SIM defocus	0	0.001439871863259334	CCD S2 on	O1	Y
[mm] SIM translation stage pos	-225.840463	-225.8433433320239	CCD S3 on	N	N
[mm] SIM translation stage offset	-7.752	-7.749109670905796	CCD S4 on	N	N
[s] Observation start time (MET)	529647040.184000	529645495.56021	CCD S5 on	N	N
Observation start date	2014-10-14T04:09:33	2014-10-14T03:44:55	Number of optional ACIS chips dropped	0	0
[s] Observation end time (MET)	529680790.184000	529681255.7622	On-chip summing requested	N	N
Observation end date	2014-10-14T13:32:03	2014-10-14T13:40:55	Subarray requested	NONE	NONE
Read mode	TIMED	TIMED	Alternating exposures requested	N	N
			[s] Primary exposure time	0.000000	3.1

2.3 Aspect

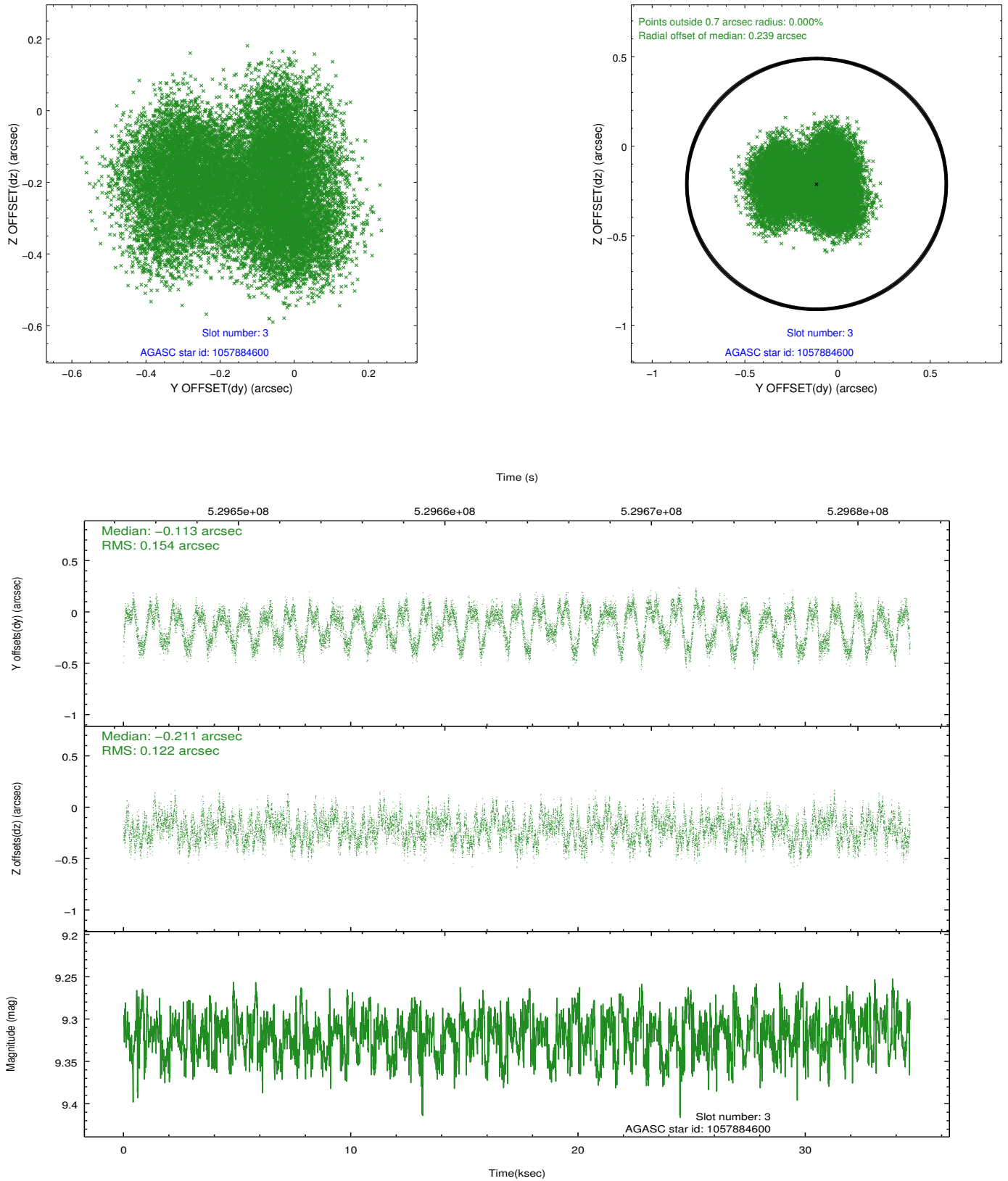


Slot Statistics

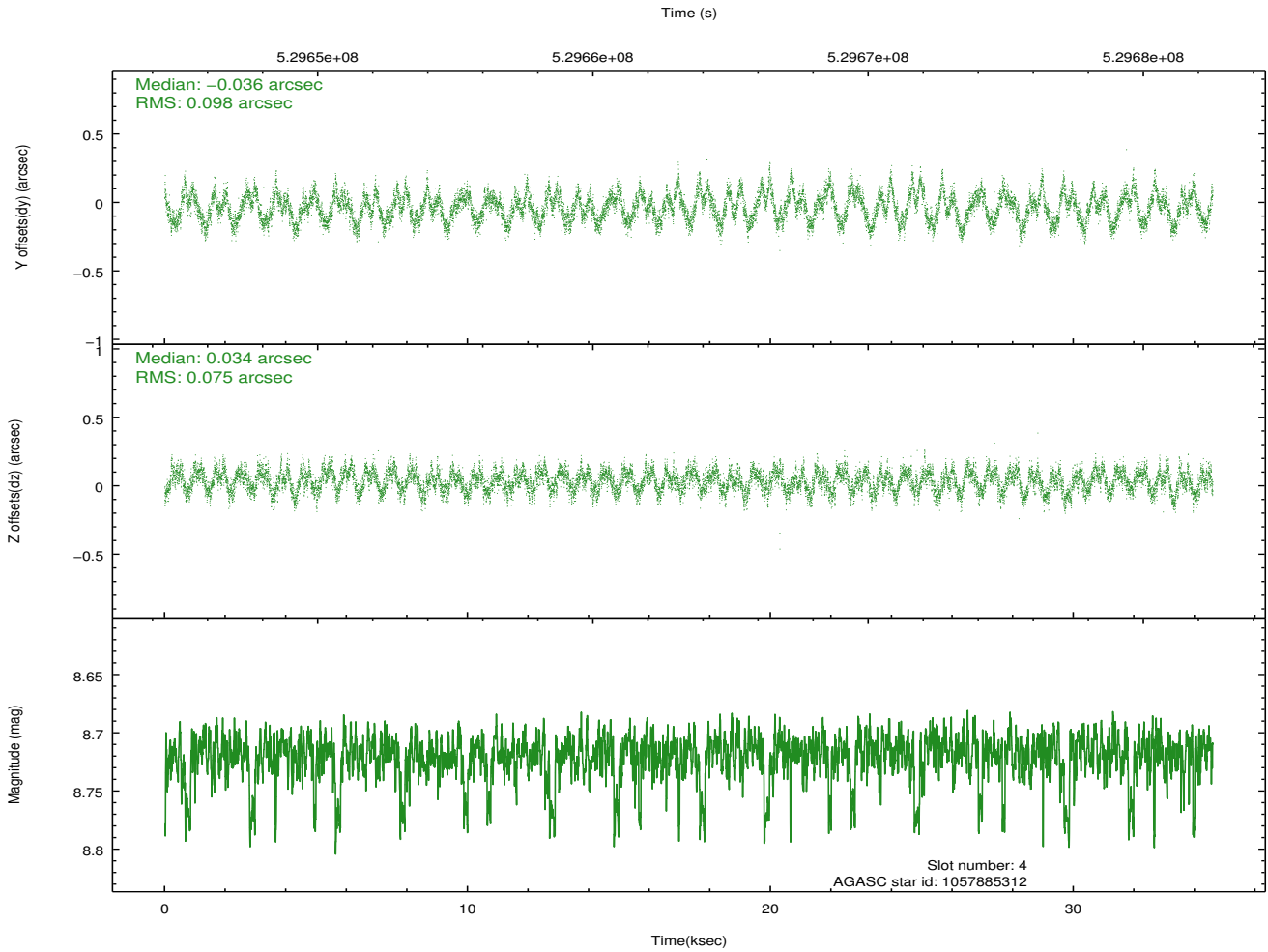
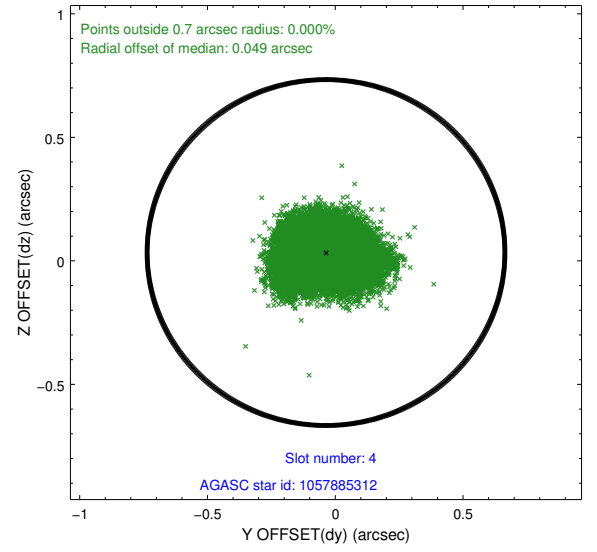
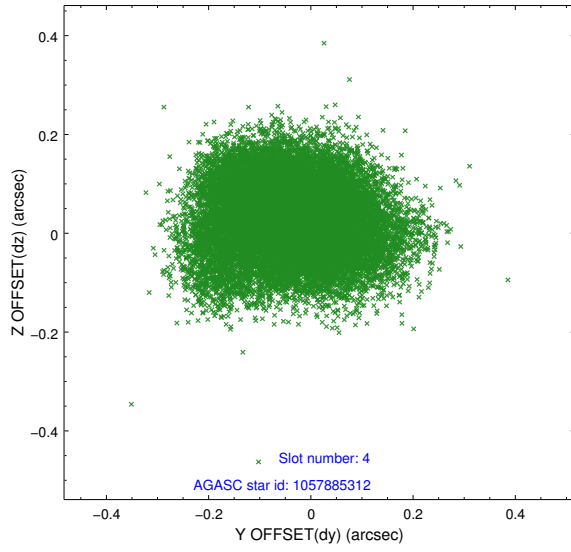
slot	status	id	mag	n_pts	med_dy	med_dz	dr1	dr2	ra	dec	mean_y	mean_z
0	FID	ACIS-I-1	7.09	8440	0.118	-0.087	0.010	0.019	0.000000	0.000000	917.92	-1002.32
1	FID	ACIS-I-5	7.07	8439	-0.333	0.079	0.011	0.036	0.000000	0.000000	-1830.73	895.14
2	FID	ACIS-I-6	7.09	8438	0.124	0.078	0.014	0.042	0.000000	0.000000	383.29	1539.82
3	GUIDE	1057884600	9.32	16869	-0.113	-0.211	0.218	0.319	62.943353	-47.976140	1018.93	637.44
4	GUIDE	1057885312	8.72	16873	-0.036	0.034	0.133	0.207	63.453714	-48.106999	1484.46	-592.64
5	GUIDE	1057891656	8.65	16874	0.195	0.404	0.119	0.191	63.028923	-48.976842	-1527.35	-1918.90
6	GUIDE	1057892856	7.74	16878	-0.028	-0.162	0.078	0.124	62.048221	-48.345716	-1411.71	1334.05
7	GUIDE	1057893392	8.82	16869	0.002	-0.063	0.152	0.230	62.278022	-48.476035	-1386.17	612.85

2.4 Star Slots

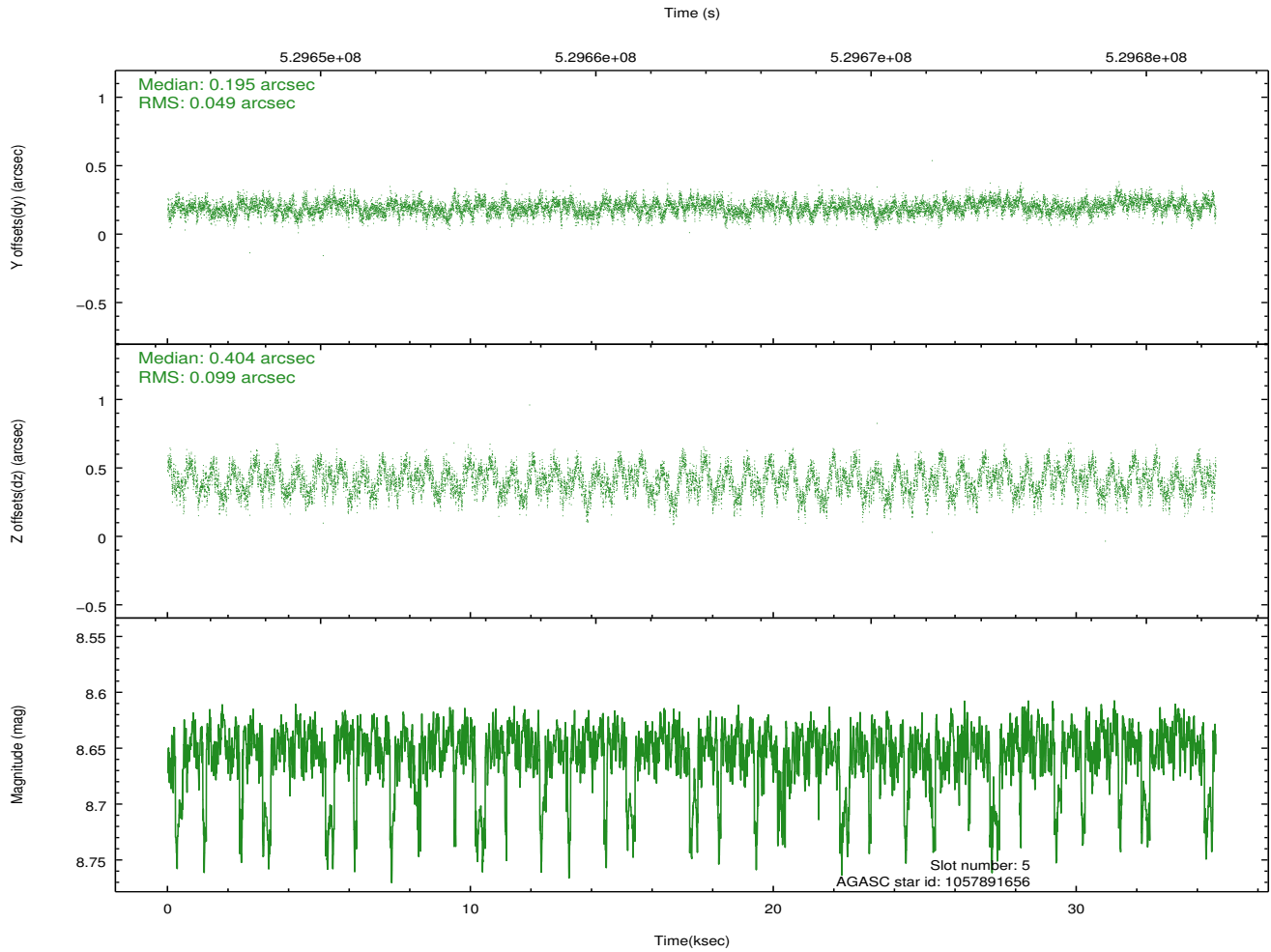
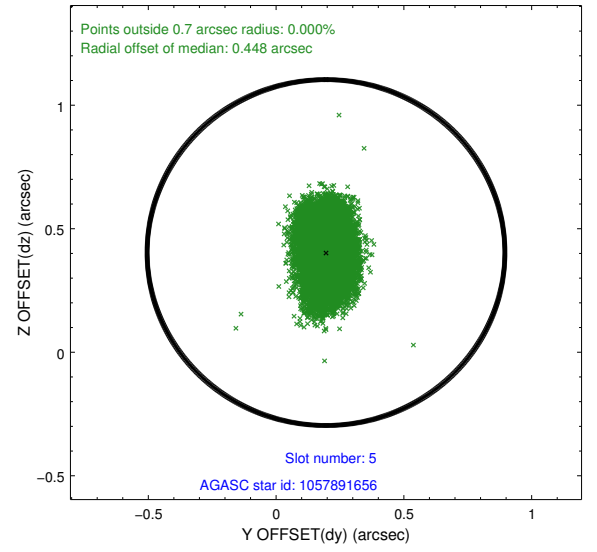
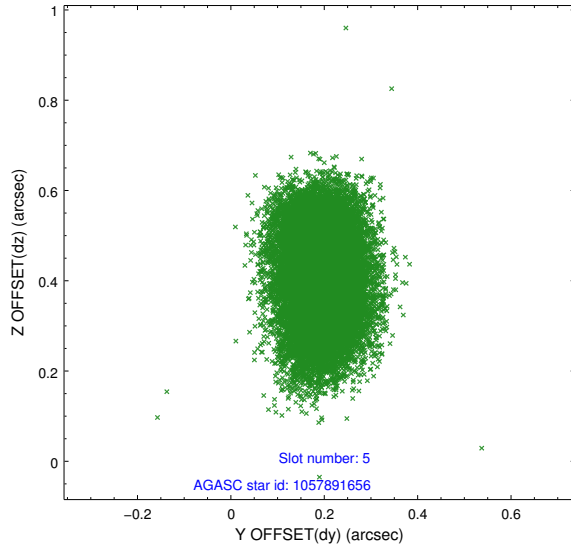
2.4.1 Slot 3



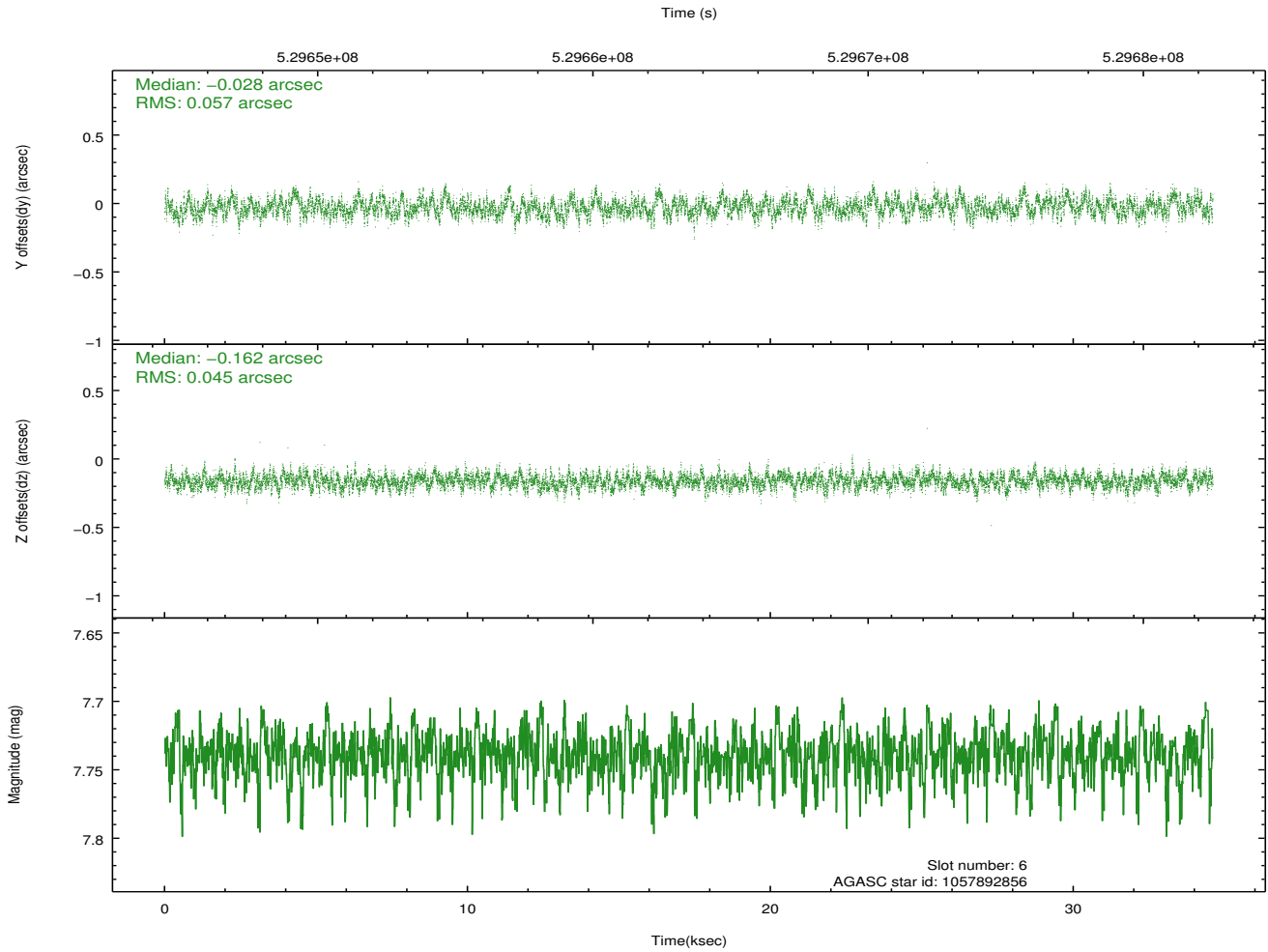
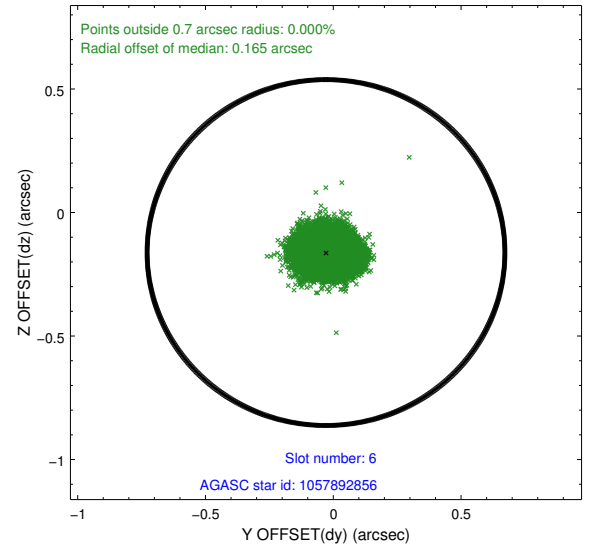
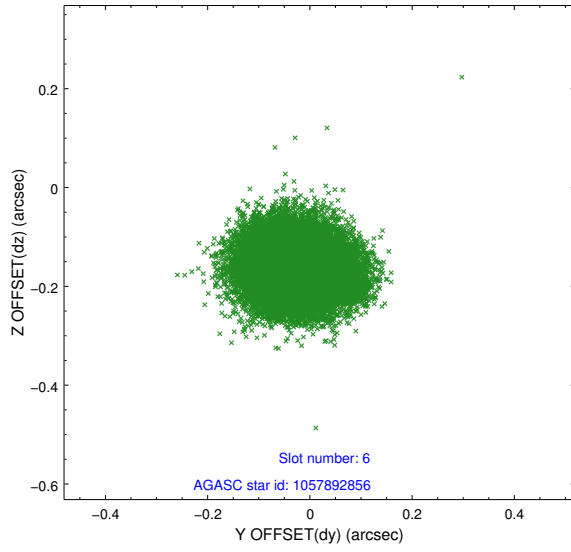
2.4.2 Slot 4



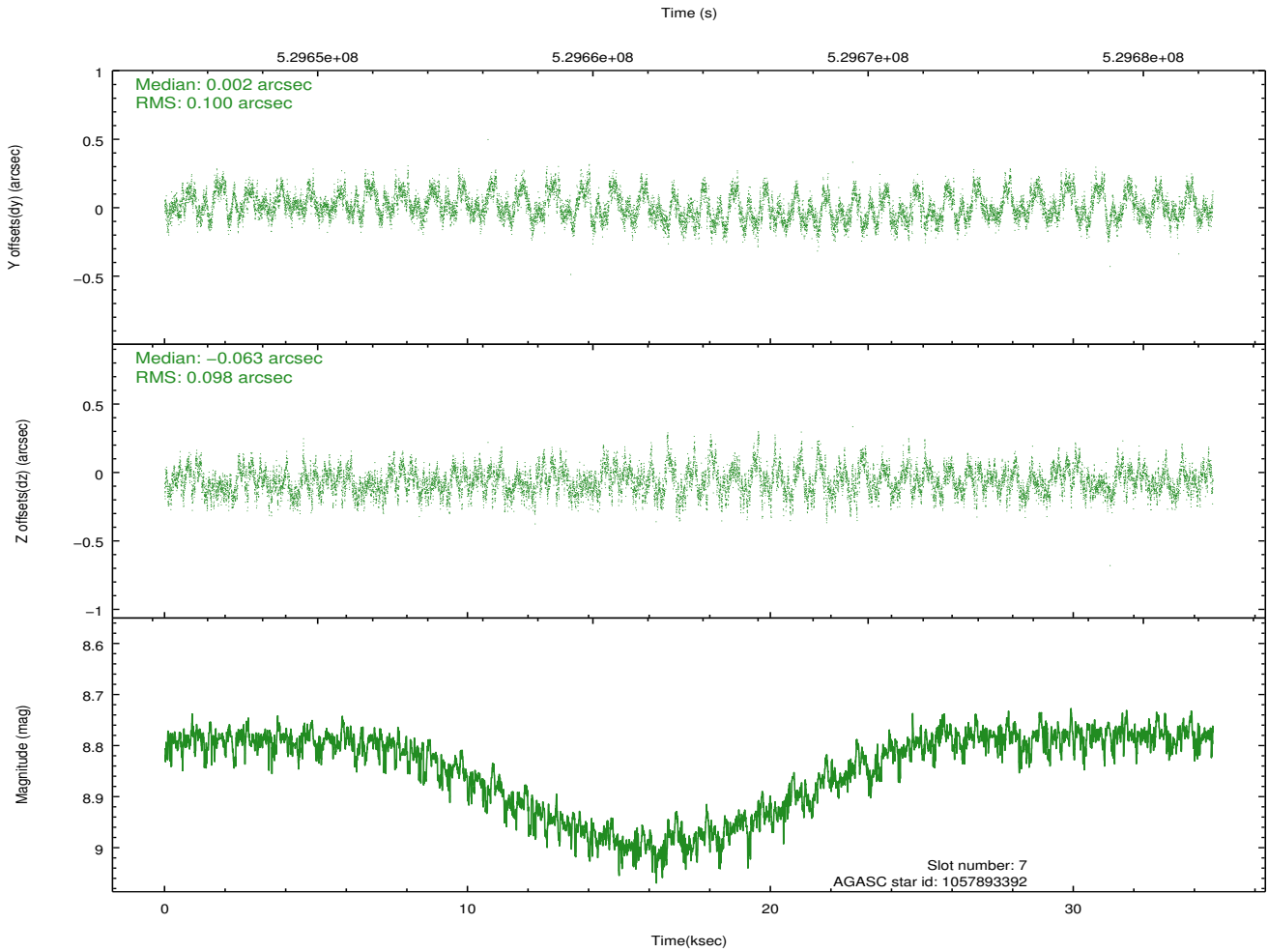
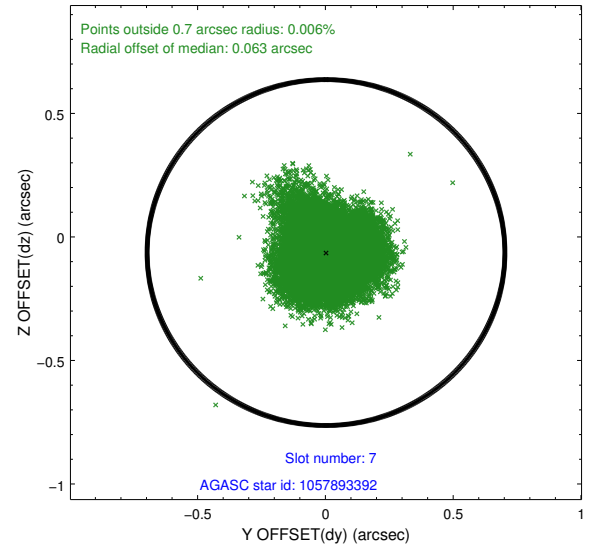
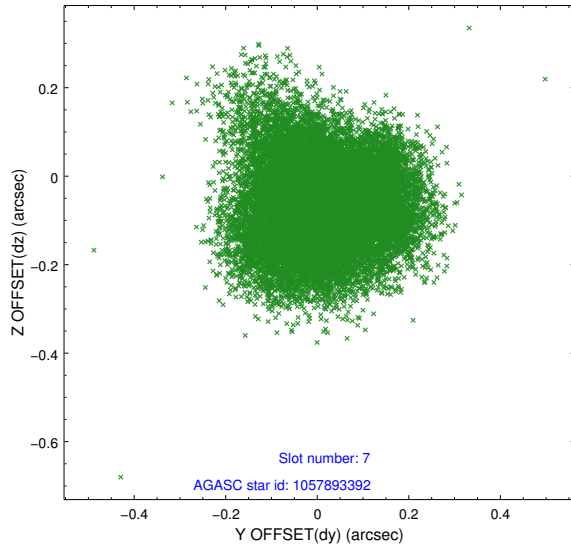
2.4.3 Slot 5



2.4.4 Slot 6

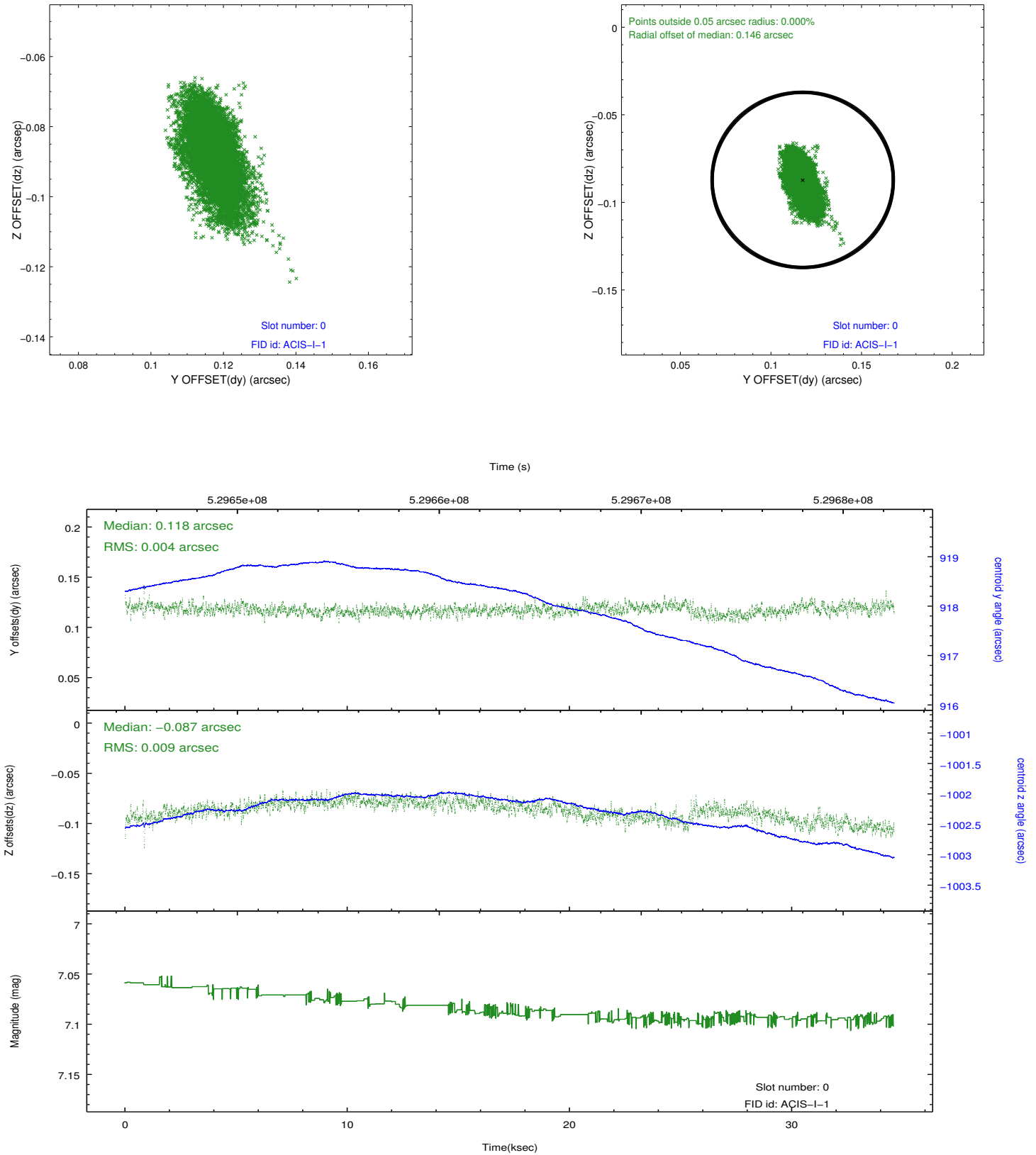


2.4.5 Slot 7

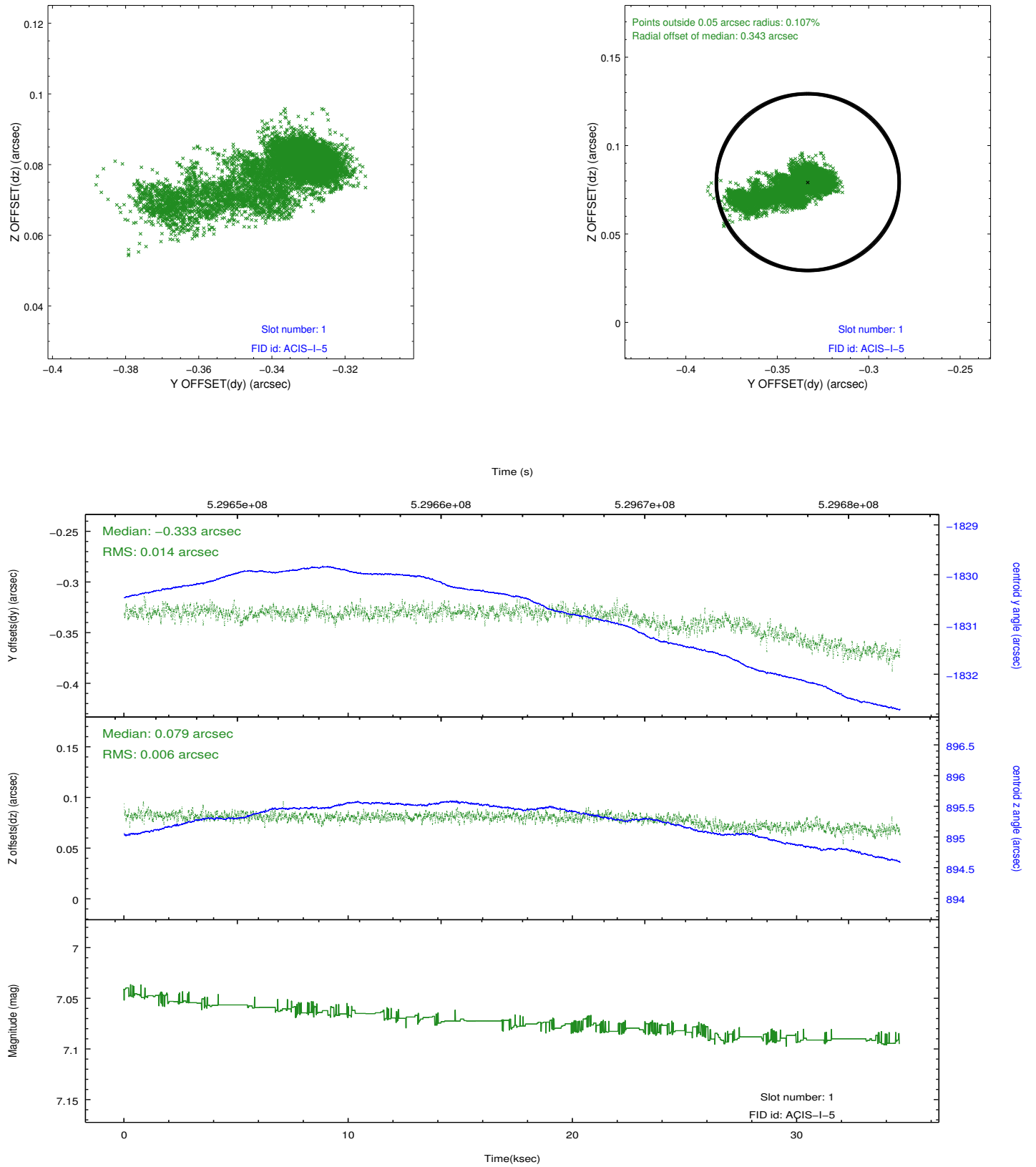


2.5 FID Slots

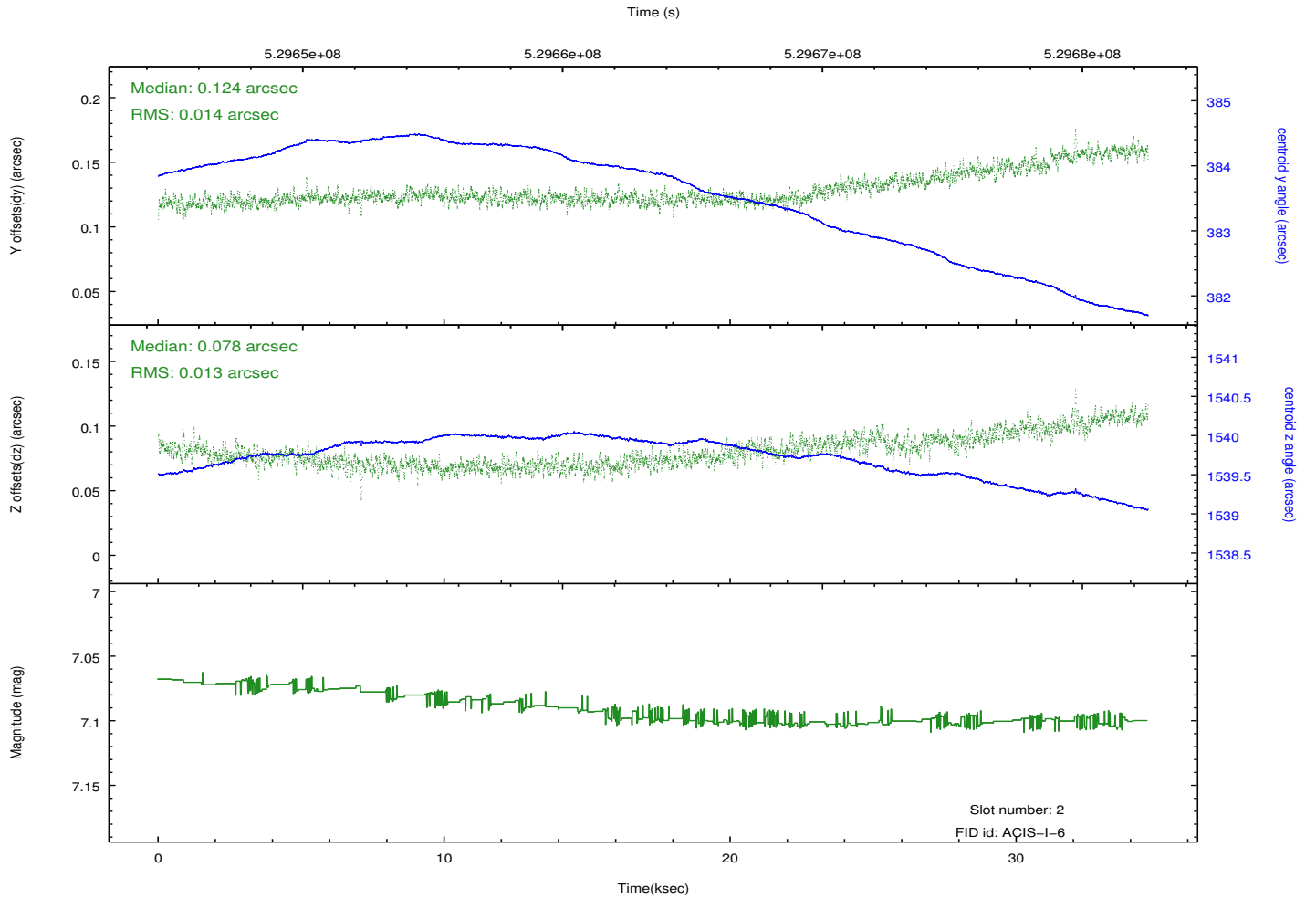
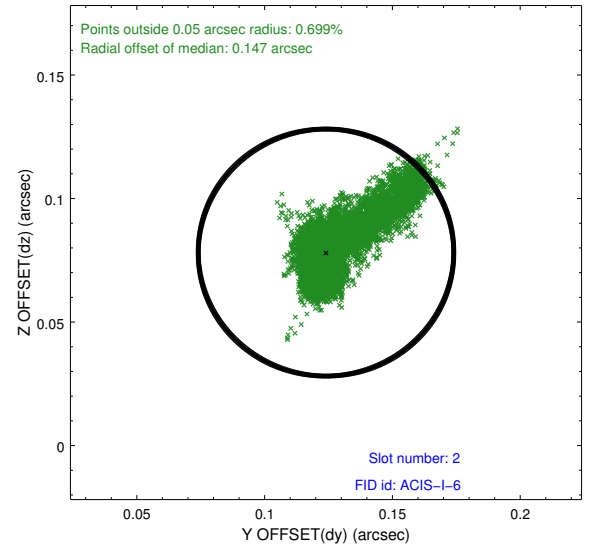
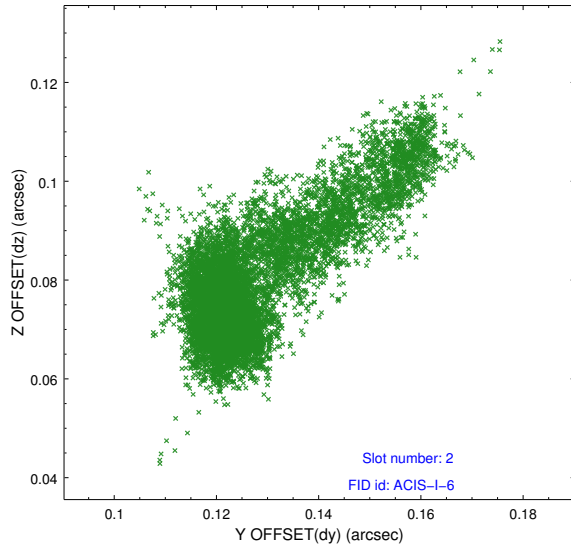
2.5.1 Slot 0



2.5.2 Slot 1



2.5.3 Slot 2



A Summary

A.1 Status

V&V Scientist	Beth Sundheim
V&V Date (YYYY-MM-DD)	2014.10.15
V&V Edition	1
V&V Disposition and Status	OK
V&V Charge Time	33.836500260234

A.2 Comments