

V&V Reference Report

L2 ASCDS Version : 10.3.1

Observation 17566 - L2 Version 1
Chandra X-Ray Center

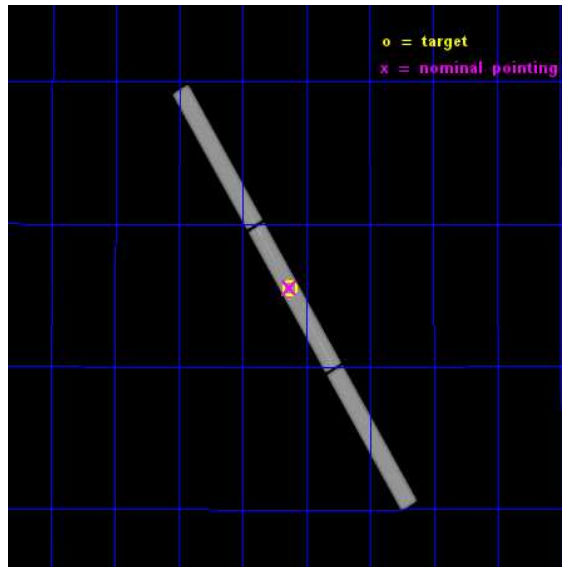
L2 Processing Date : Dec 9 2014

Contents

1	Front	2
2	OBI	3
2.1	OBI	3
2.1.1	Images	3
2.1.2	Parameters	4
2.1.3	Events	4
2.2	Compared Parameters	5
2.3	Aspect	6
2.4	Star Slots	9
2.4.1	Slot 3	9
2.4.2	Slot 4	10
2.4.3	Slot 5	11
2.4.4	Slot 6	12
2.4.5	Slot 7	13
2.5	FID Slots	14
2.5.1	Slot 0	14
2.5.2	Slot 1	15
2.5.3	Slot 2	16
3	Gratings	17
3.1	LETG Arm	17
A	Summary	19
A.1	Status	19
A.2	Comments	19

1 Front

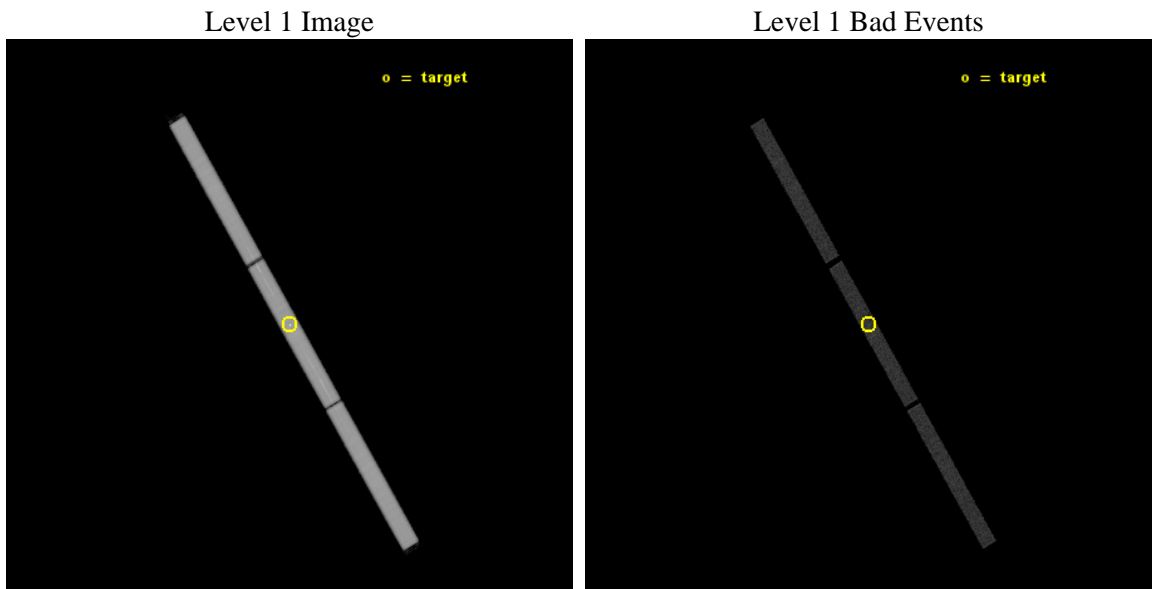
seq_num	703152	Sequence number
obs_id	17566	Observation id
title	A High-resolution Spectrum of an Unprecedented Tidal Disruption Event	Proposal title
observer	Dr. Jon Miller	Principal investigator
object	ASASSN-14li	Source name
ra_targ	192.063333	Observer's specified target RA [deg]
dec_targ	17.773944	Observer's specified target Dec [deg]
ra_nom	192.0659375105	Nominal RA [deg]
dec_nom	17.778138104496	Nominal Dec [deg]
roll_nom	59.566538039421	Nominal Roll [deg]
revision	1	Processing version of data
ontime	35039.883200347	[s]
livetime	34800.05784016	Ontime multiplied by DTCOR
l2events	2130972	Number of level 2 events



2 OBI

2.1 OBI

2.1.1 Images



2.1.2 Parameters

obi_num	0	Obi number	sched_exp_time	35000.000000	[s] Scheduled observation exposure time
ascdsver	10.3.1	Processing system revision	ontime	35039.883200347	[s]
caldsver	4.6.4	 	l1events	2753461	Number of level 1 events
date	2014-12-09T16:39:44	Date and time of file creation	tgmethod	TGDETECT	Method used to create src1a file
revision	1	Processing version of data	zo_pos	(32831.93, 32647.71)	src1a sky pixel position

2.1.3 Events

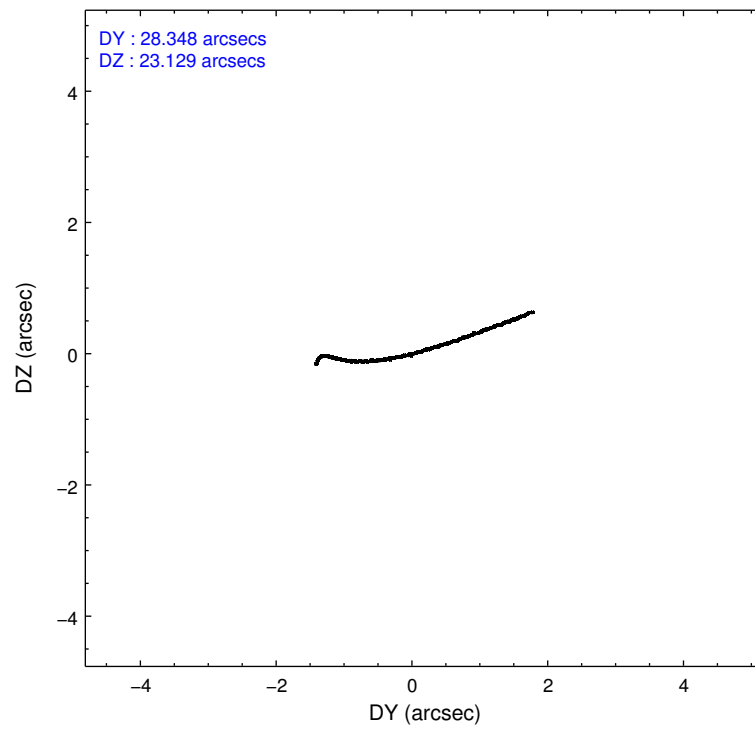
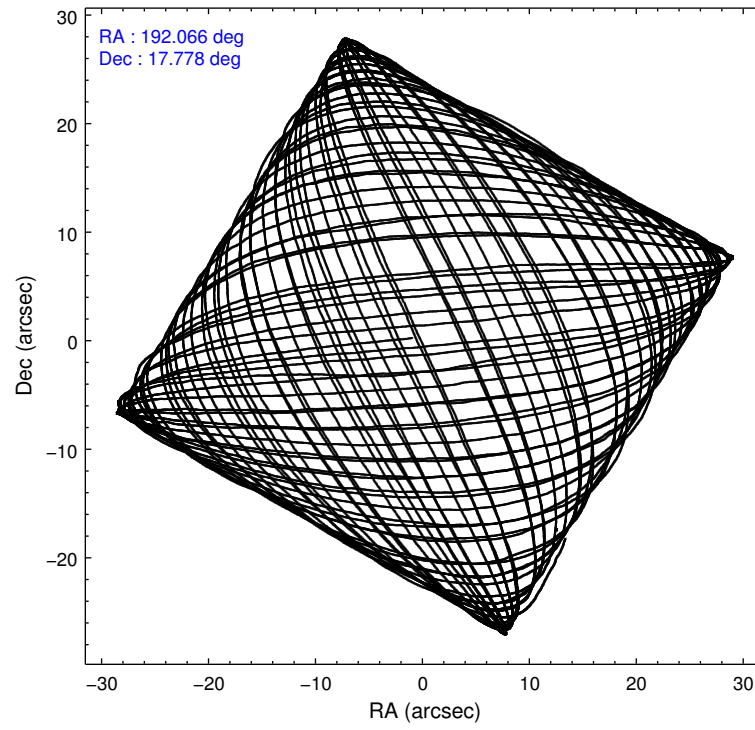
Level 1 Events

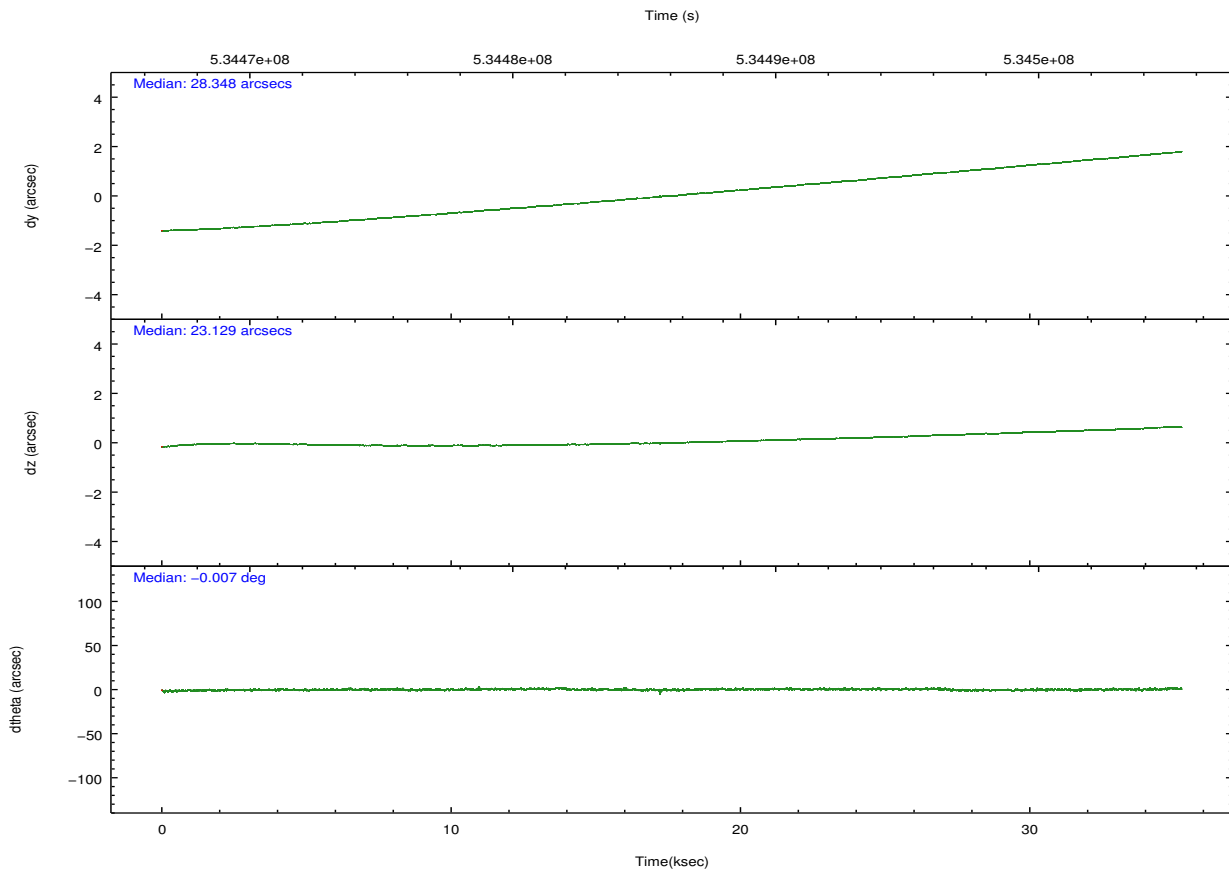
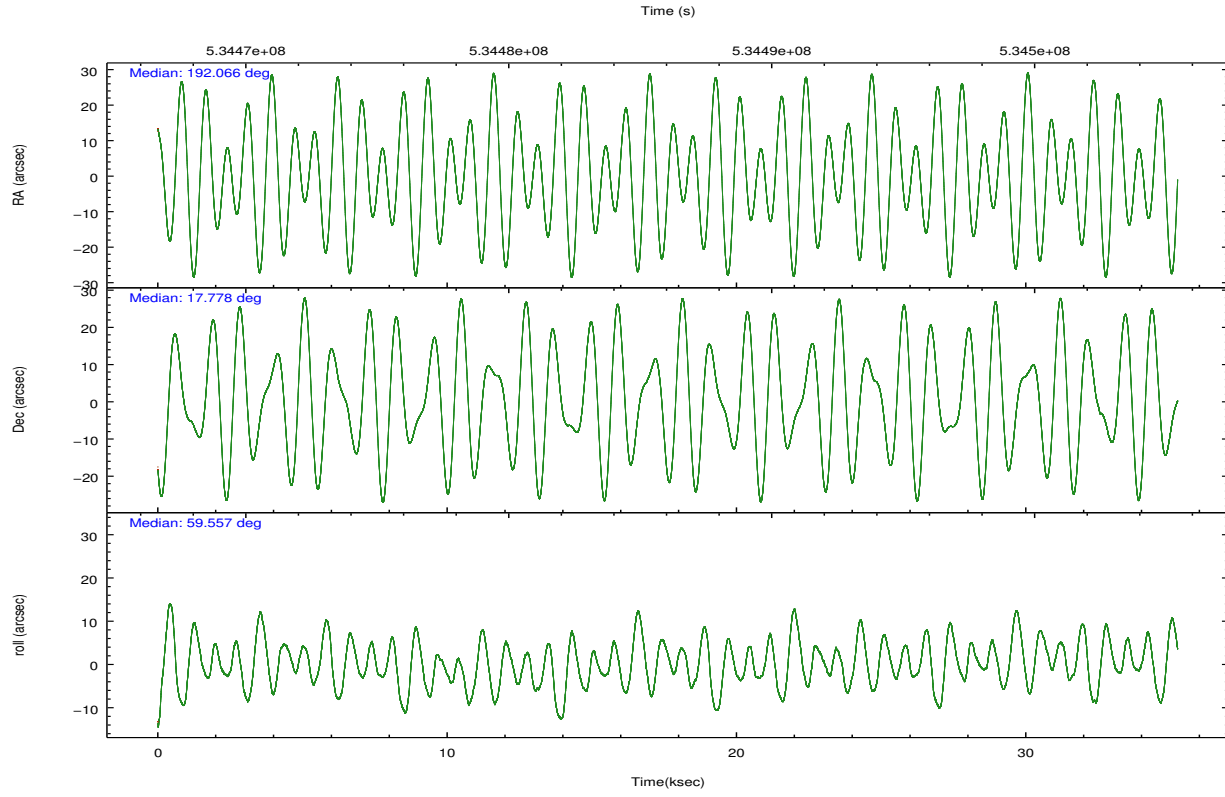
	segment 1	segment 2	segment 3
level 1 events	911761	943524	898176
rejected events	20431	20276	20718
rejected %	2%	2%	2%

2.2 Compared Parameters

Parameter	Planned	Actual	Parameter	Planned	Actual
Instrument	HRC	HRC	Obspar format version number	7	7
Detector	HRC-S	HRC-S	Obspar file type	PREDICTED	ACTUAL
Grating	LETG	LETG	Obspar update status	NONE	UPDATED
Data mode	OBSERVING	OBSERVING			
Observation mode	POINTING	POINTING			
[deg] Pointing RA	192.067206	192.0659375105014			
[deg] Pointing Dec	17.749332	17.77813810449597			
[deg] Pointing Roll	59.498814	59.56653803942081			
[mm] SIM focus pos	-1.429586	-1.428180813131781			
[mm] SIM defocus	0.1037507710433287	0.1051558262725154			
[mm] SIM translation stage pos	250.455976	250.466033080201			
[mm] SIM translation stage offset	0	-0.01005468664627074			
[s] Observation start time (MET)	534468666.184000	534468095.20352			
Observation start date	2014-12-08T23:29:59	2014-12-08T23:21:35			
[s] Observation end time (MET)	534503666.184000	534504488.34304			
Observation end date	2014-12-09T09:13:19	2014-12-09T09:28:08			

2.3 Aspect





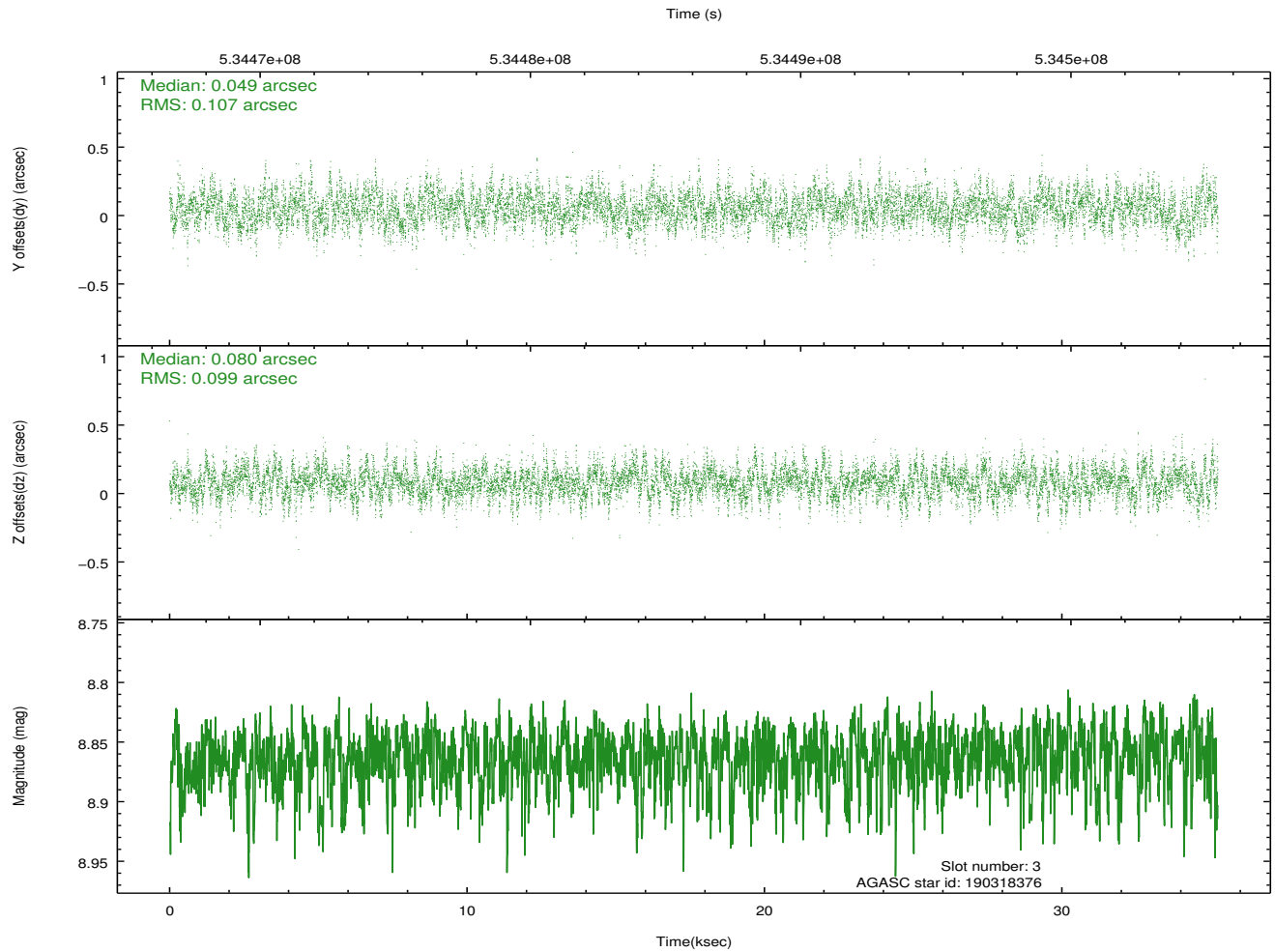
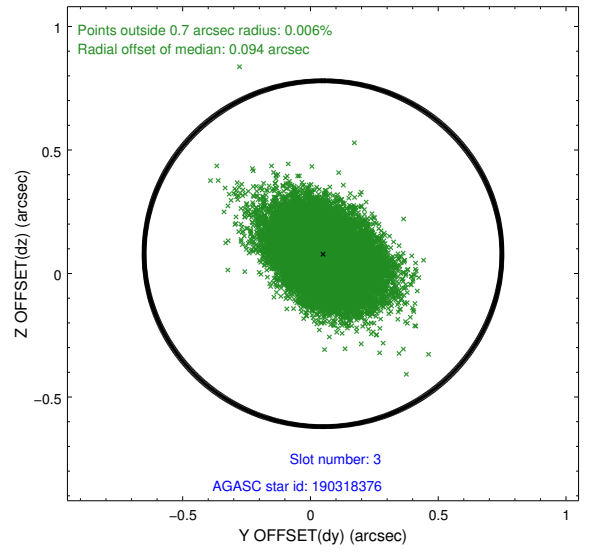
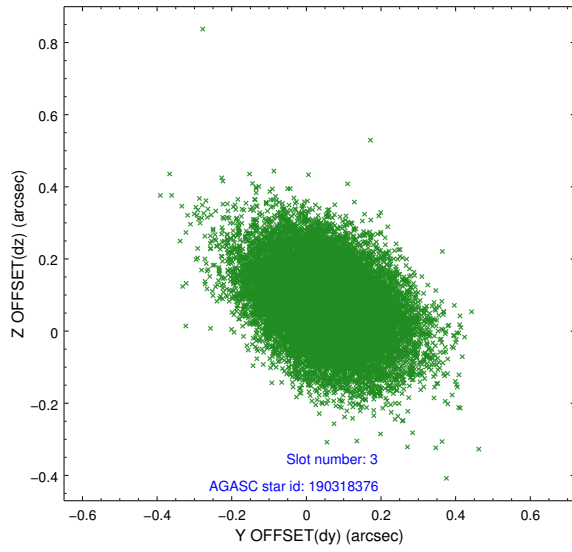
Slot Statistics

slot	status	used	id	mag	n_pts	med_dy	med_dz	dr1	dr2	ra	dec	mean_y	mean_z
0	FID		HRC-S-1	7.08	8597	-0.014	-0.158	0.020	0.031	0.000000	0.000000	-1183.22	-472.45
1	FID		HRC-S-2	7.04	8597	0.356	-0.134	0.016	0.033	0.000000	0.000000	1216.70	-464.96
2	FID		HRC-S-3	7.08	8597	0.050	-0.013	0.017	0.024	0.000000	0.000000	-1185.80	557.17
3	GUIDE	used	190318376	8.86	17184	0.049	0.080	0.153	0.253	192.967225	17.915241	2086.81	-2348.82
4	GUIDE	used	190321992	9.37	17178	-0.117	0.004	0.167	0.286	192.558931	17.650526	550.68	-1631.66
5	GUIDE	used	190322864	8.19	17190	-0.216	-0.219	0.118	0.184	192.118474	17.579756	-436.27	-461.56
6	GUIDE	used	190323712	9.21	17179	0.158	-0.064	0.158	0.263	192.191806	17.550786	-398.45	-732.00
7	GUIDE	used	189924664	8.41	17189	0.138	0.190	0.105	0.167	192.162029	16.938116	-2349.58	-1763.63

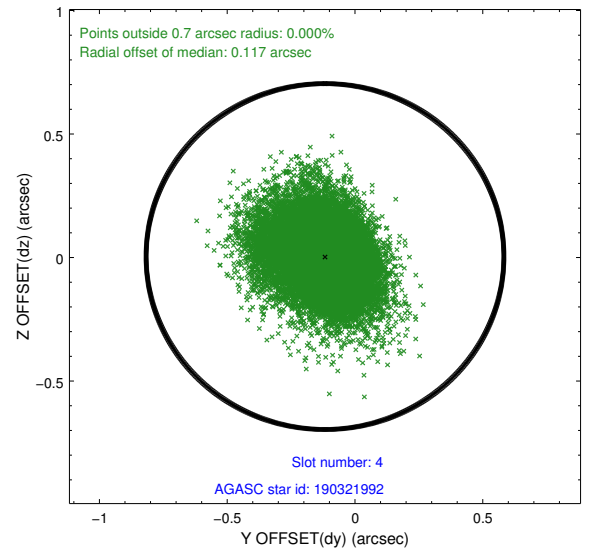
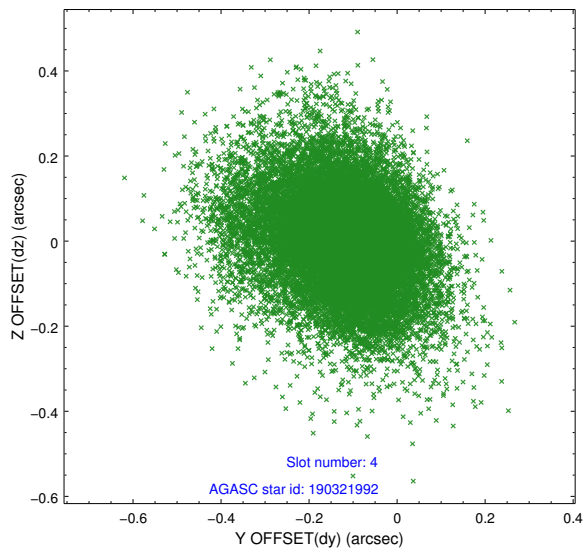
∞

2.4 Star Slots

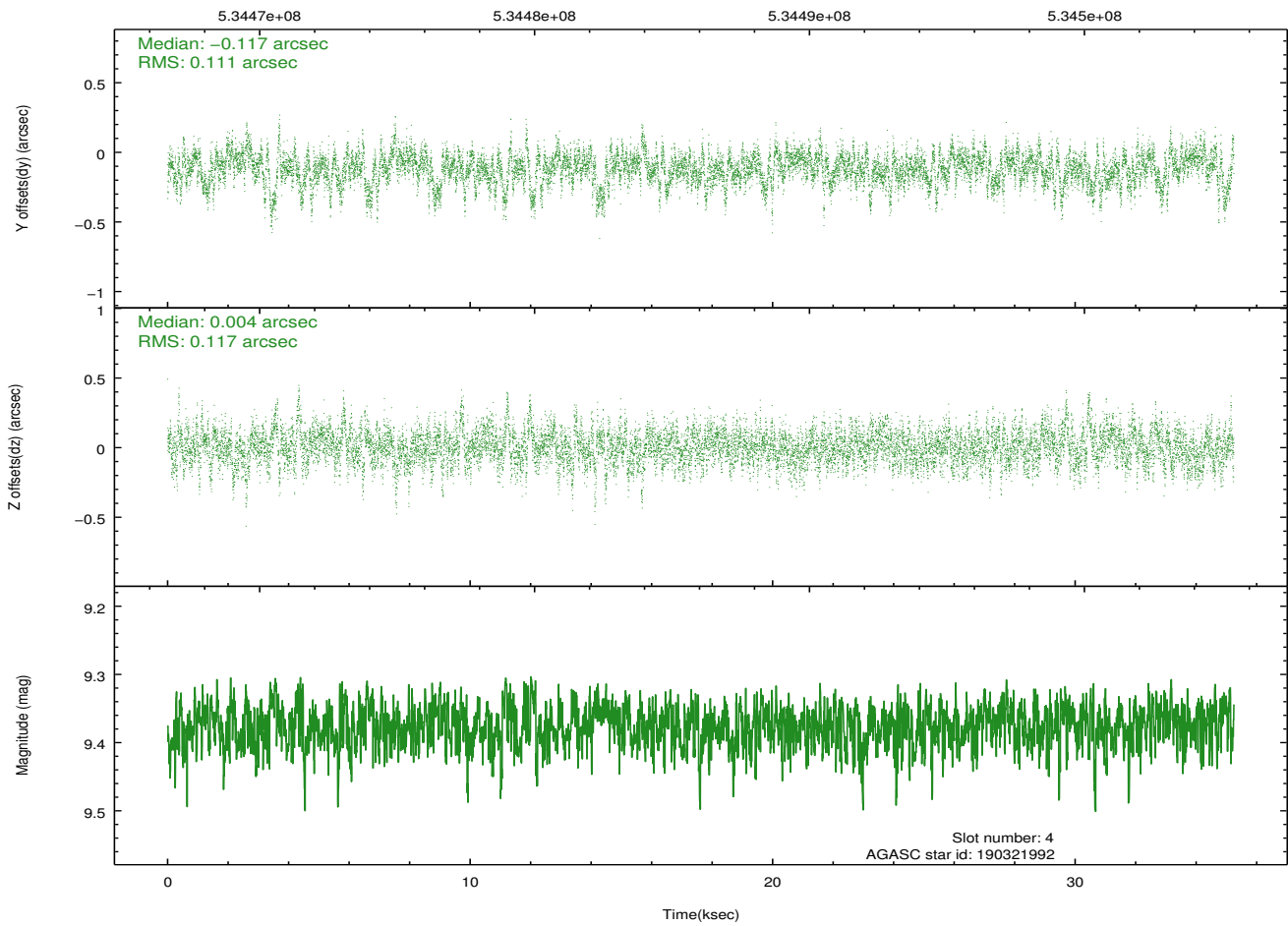
2.4.1 Slot 3



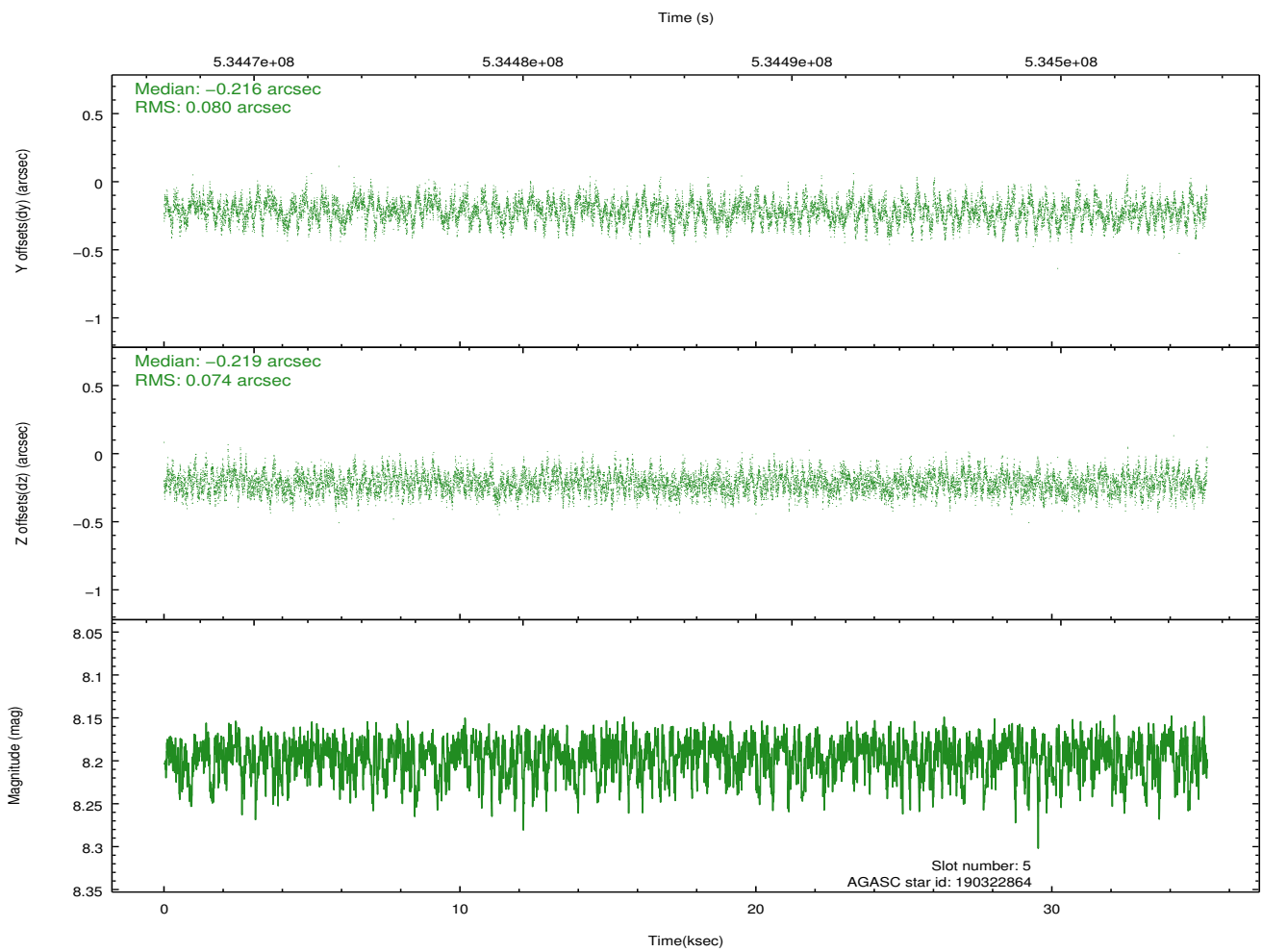
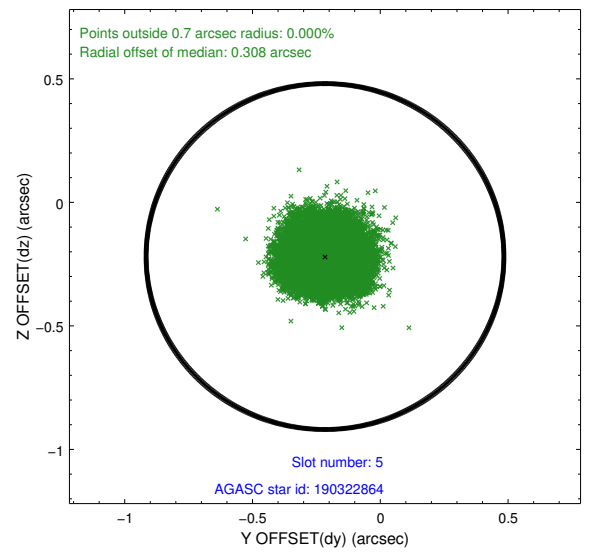
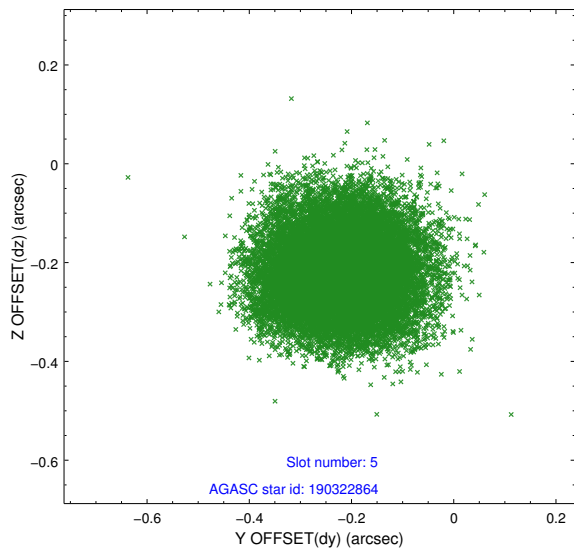
2.4.2 Slot 4



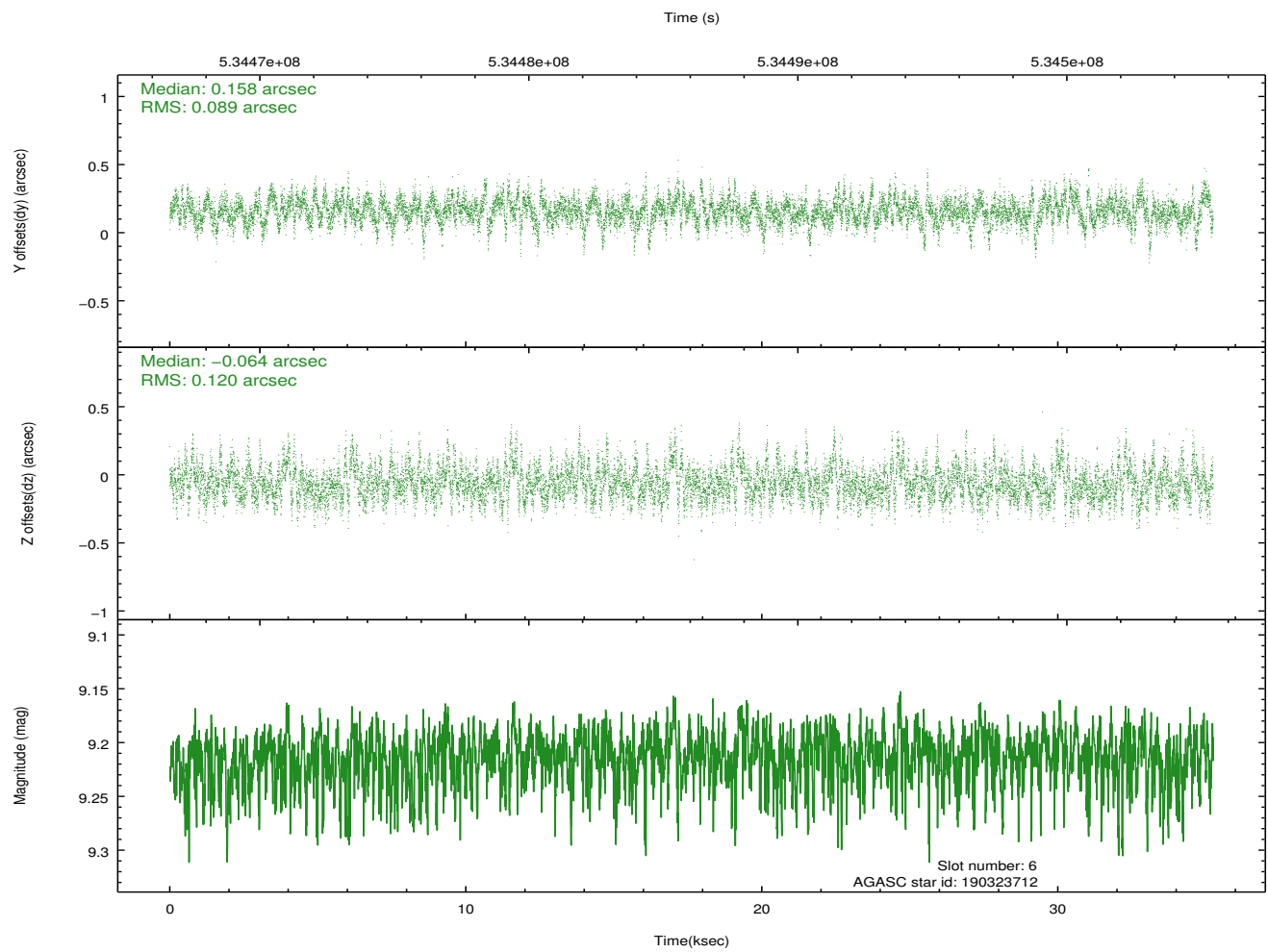
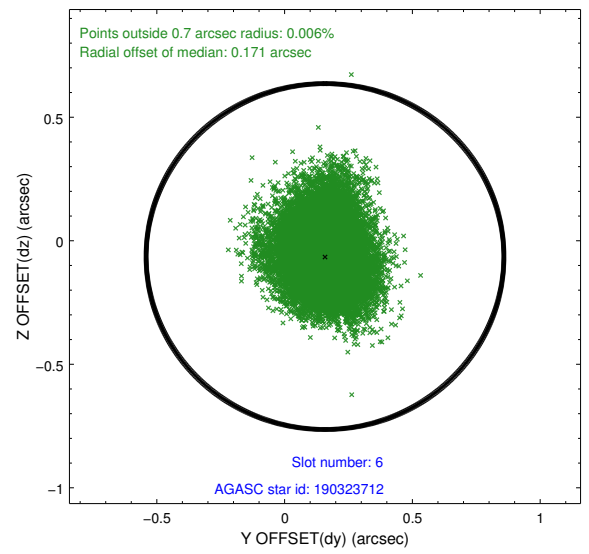
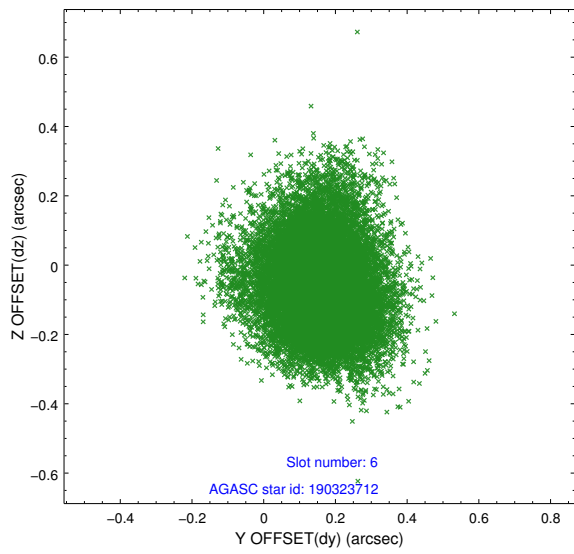
Time (s)



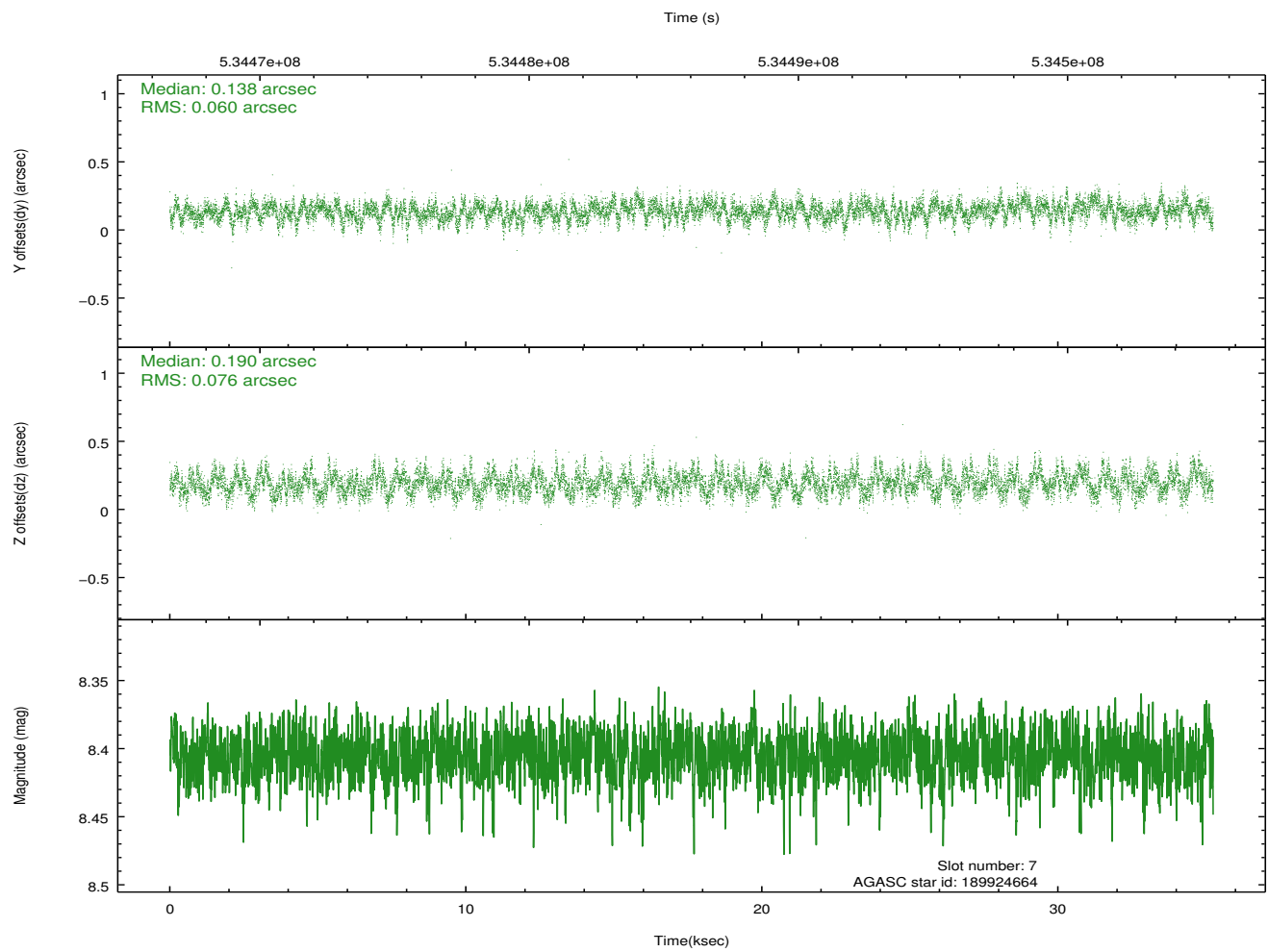
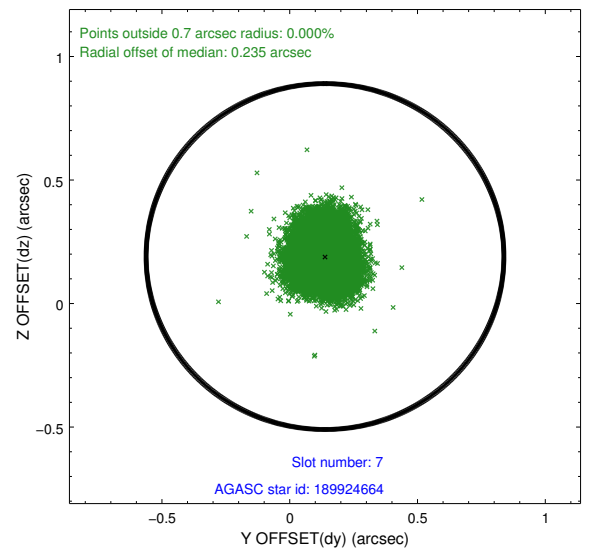
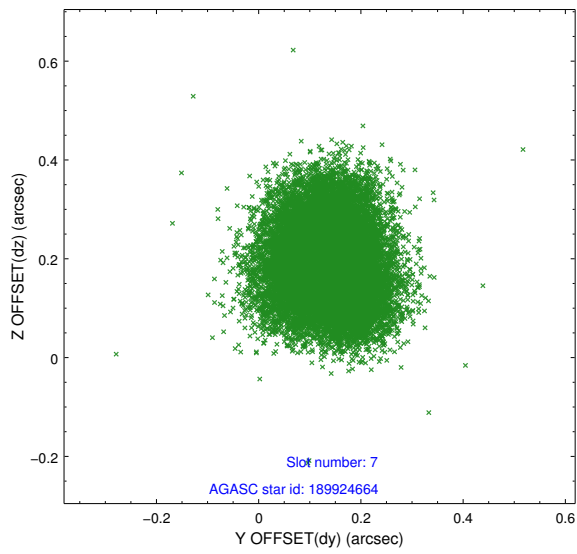
2.4.3 Slot 5



2.4.4 Slot 6

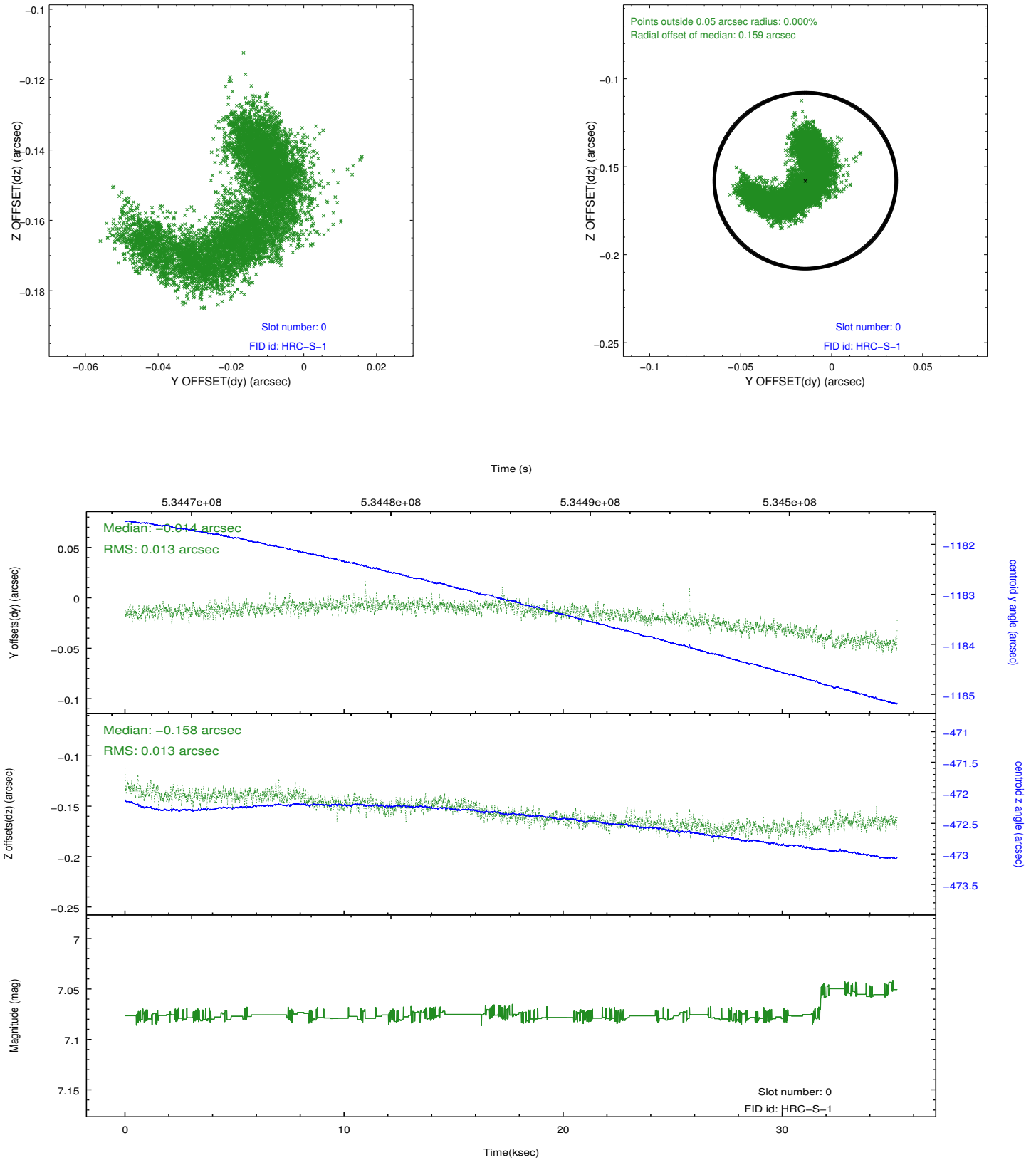


2.4.5 Slot 7

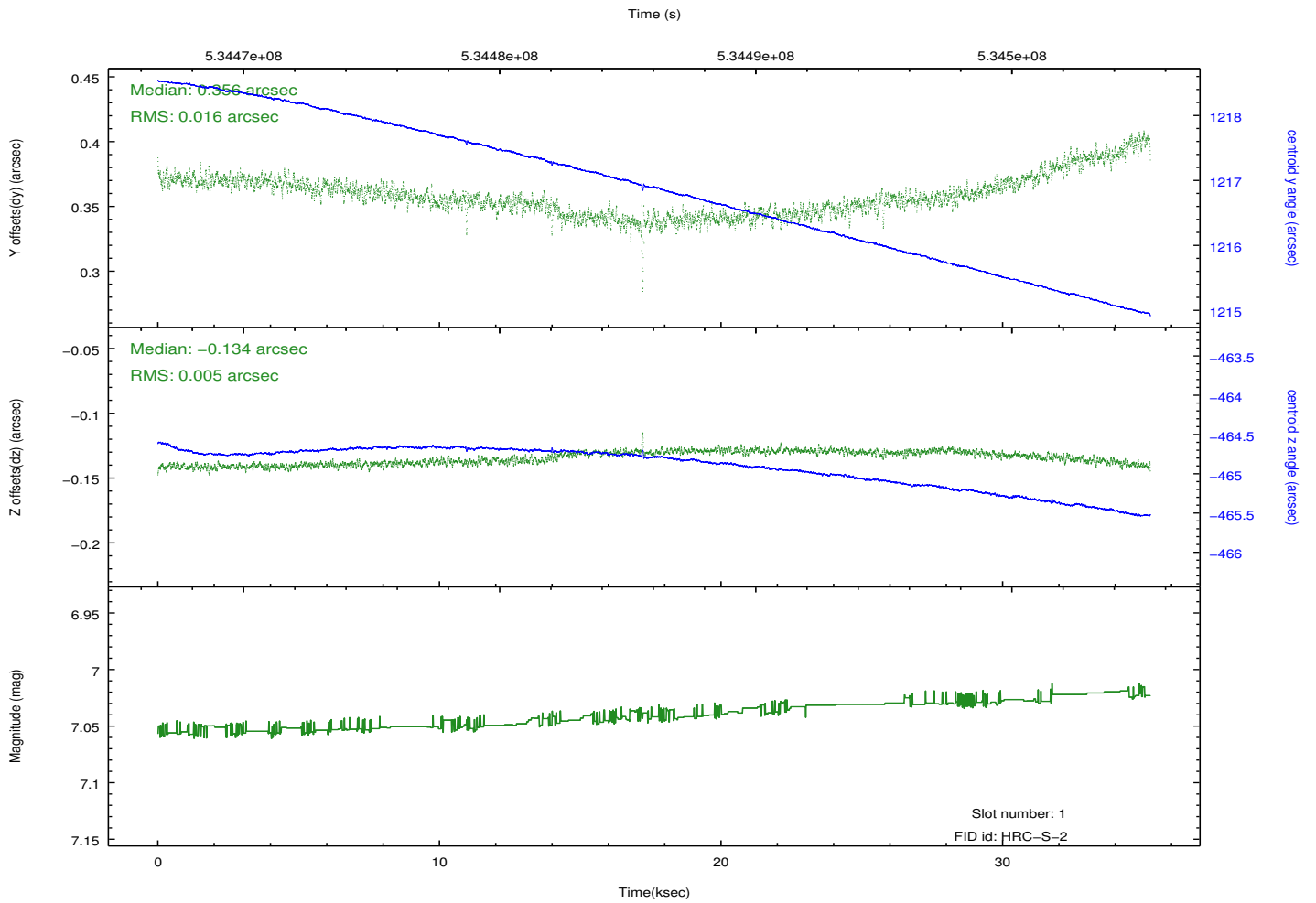
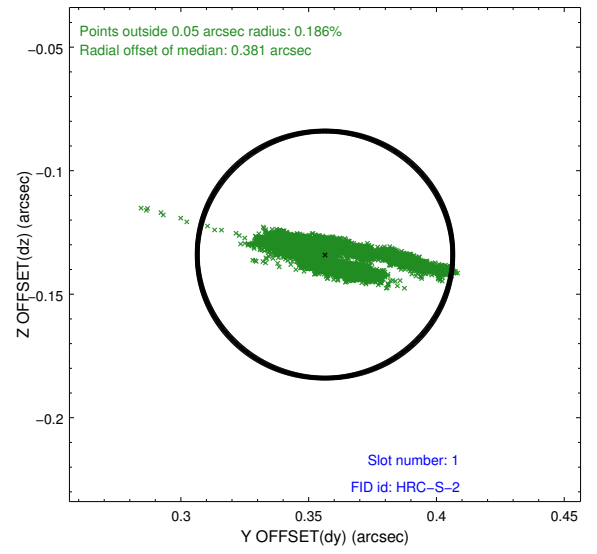
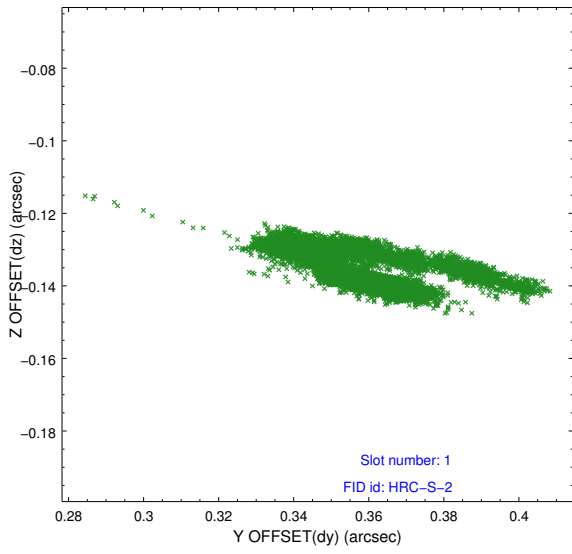


2.5 FID Slots

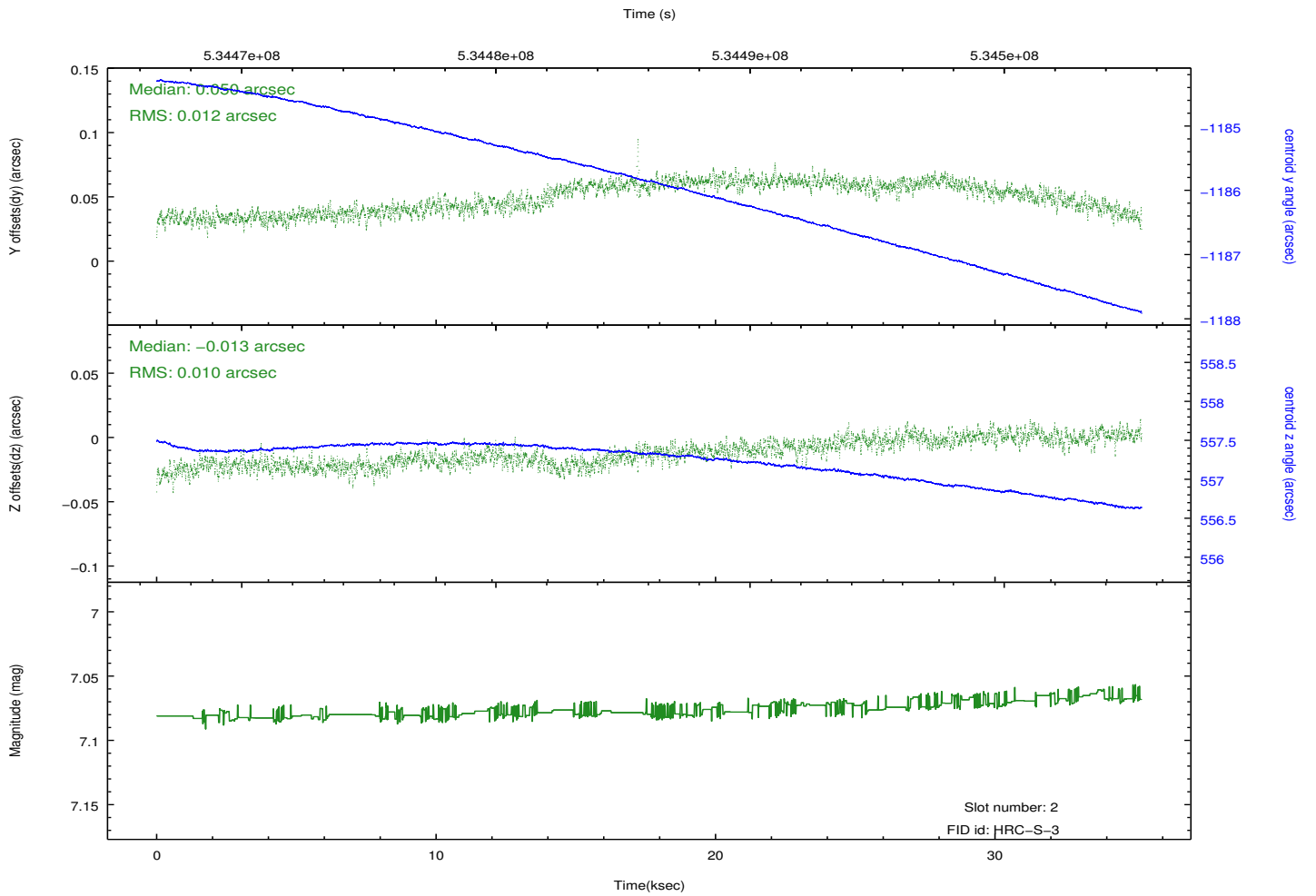
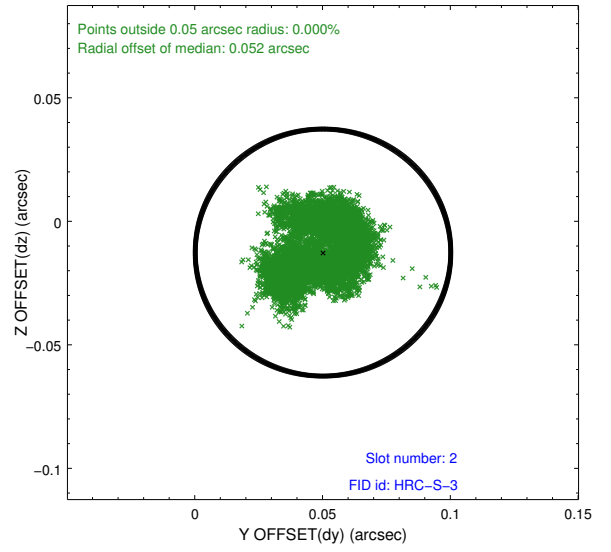
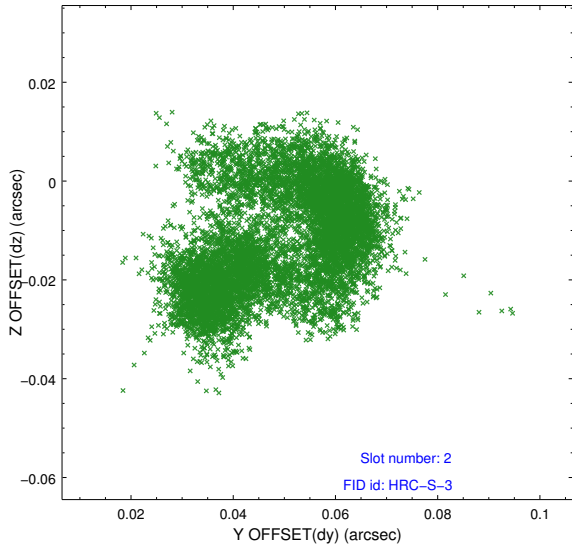
2.5.1 Slot 0



2.5.2 Slot 1

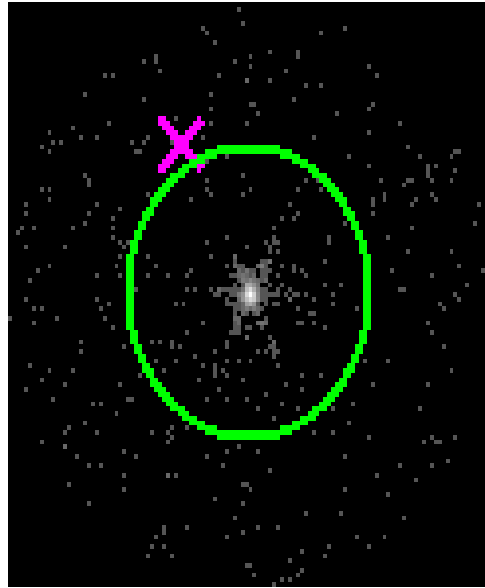


2.5.3 Slot 2

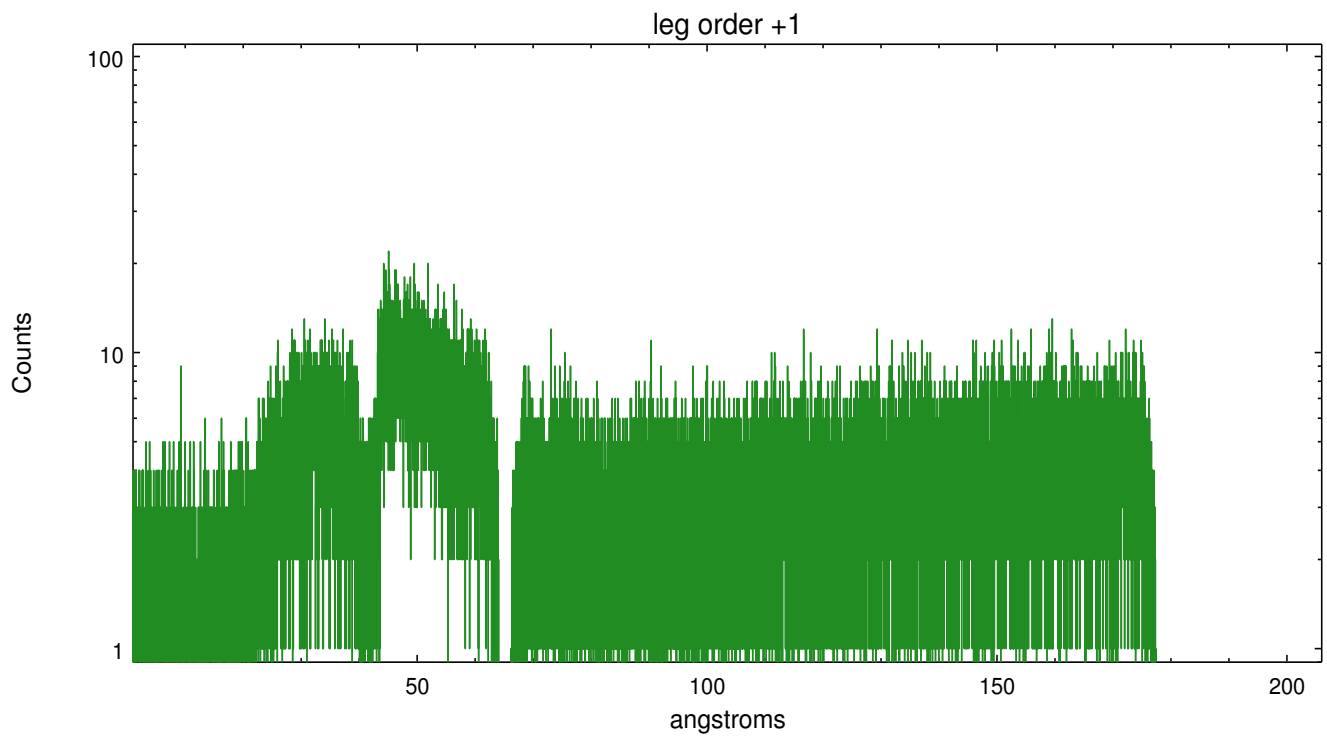
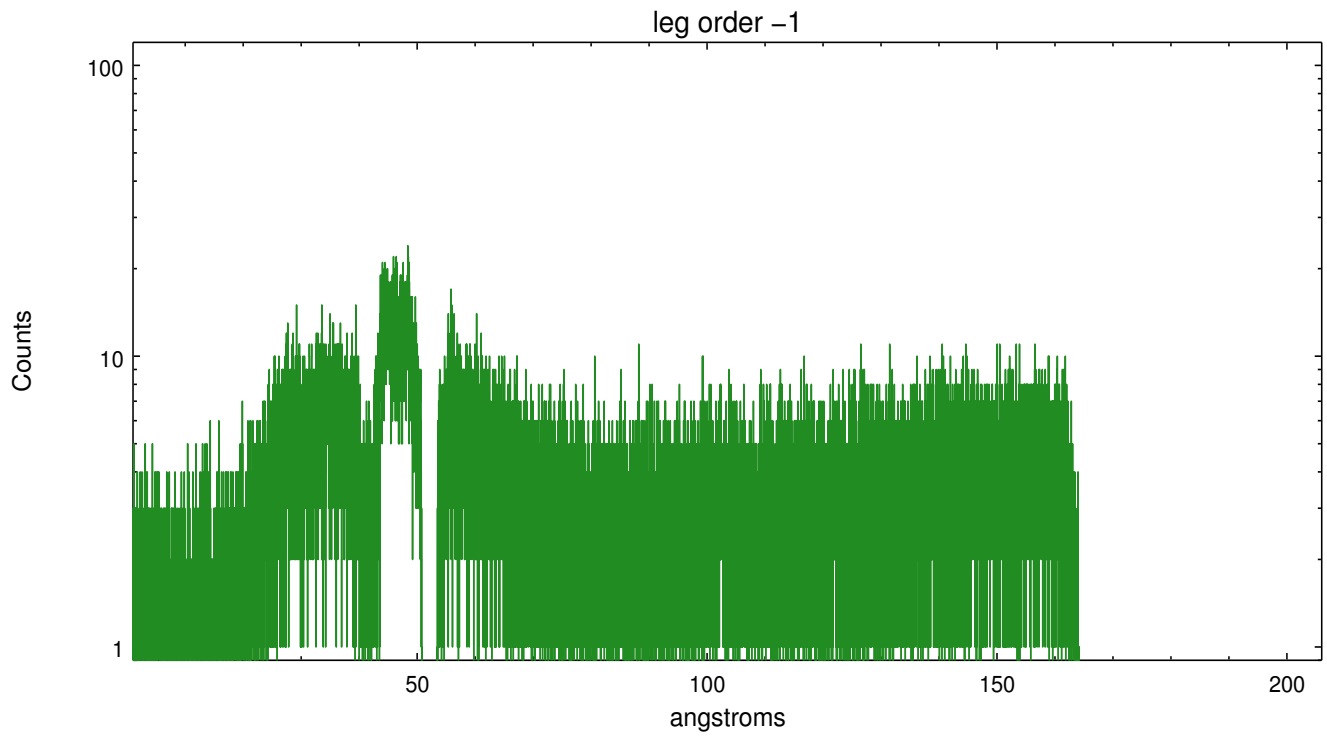


3 Gratings

3.1 LETG Arm



LETG Zero Order



A Summary

A.1 Status

V&V Scientist	Joy Nichols
V&V Date (YYYY-MM-DD)	2014.12.10
V&V Edition	1
V&V Disposition and Status	OK
V&V Charge Time	35.039883200347

A.2 Comments