

V&V Reference Report

L2 ASCDS Version : 8.4.5

Observation 2016 - L2 Version 3
Chandra X-Ray Center

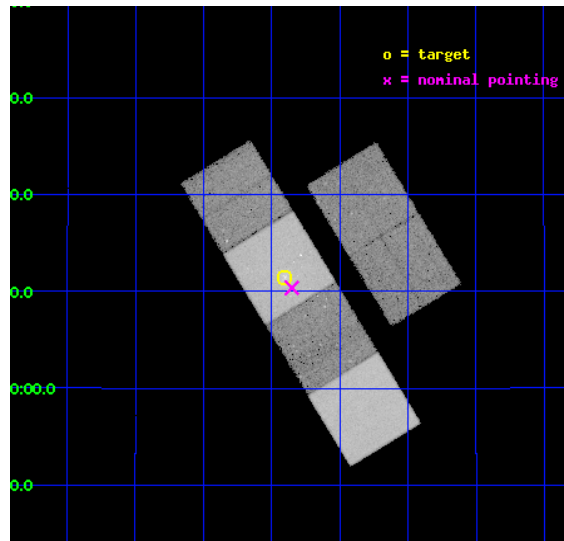
L2 Processing Date : Sep 17 2012

Contents

1	Front	2
2	OBI	3
2.1	OBI	3
2.1.1	Images	3
2.1.2	Bias	3
2.1.3	Parameters	4
2.1.4	Events	4
2.2	Compared Parameters	5
2.3	Aspect	6
2.4	Star Slots	9
2.4.1	Slot 3	9
2.4.2	Slot 4	10
2.4.3	Slot 5	11
2.4.4	Slot 6	12
2.4.5	Slot 7	13
2.5	FID Slots	14
2.5.1	Slot 0	14
2.5.2	Slot 1	15
2.5.3	Slot 2	16
A	Summary	17
A.1	Status	17
A.2	Comments	17

1 Front

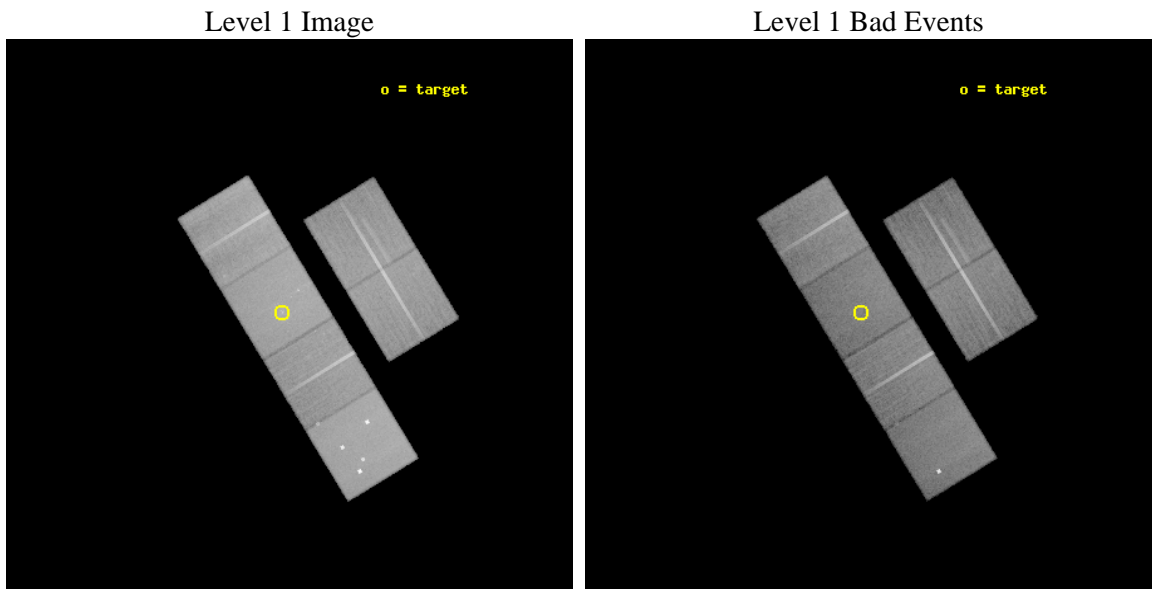
seq_num	600150	Sequence number
obs_id	2016	Observation id
title	RESOLVING THE X-RAY BINARY POPULATION IN EARLY-TYPE GALAXIES	Propo
observer	Dr. CRAIG SARAZIN	Principal investigator
object	NGC4382 (M85)	Source name
dtcycle	0	
cycle	P	events from which exps? Prim/Second/Both
ra_targ	186.350833	Observer's specified target RA [deg]
dec_targ	18.189833	Observer's specified target Dec [deg]
ra_nom	186.33784667673	Nominal RA [deg]
dec_nom	18.173021885737	Nominal Dec [deg]
roll_nom	238.63502452693	Nominal Roll [deg]
revision	3	Processing version of data
ontime	40256.000037476	Sum of GTIs [s]
livetime	39746.254325749	Livetime [s]
ontime2	40252.759077221	Sum of GTIs [s]
ontime3	40249.518116996	Sum of GTIs [s]
ontime5	40256.000037476	Sum of GTIs [s]
ontime6	40256.000037476	Sum of GTIs [s]
ontime7	40256.000037476	Sum of GTIs [s]
ontime8	40252.759077236	Sum of GTIs [s]
l2events	395700	Number of level 2 events



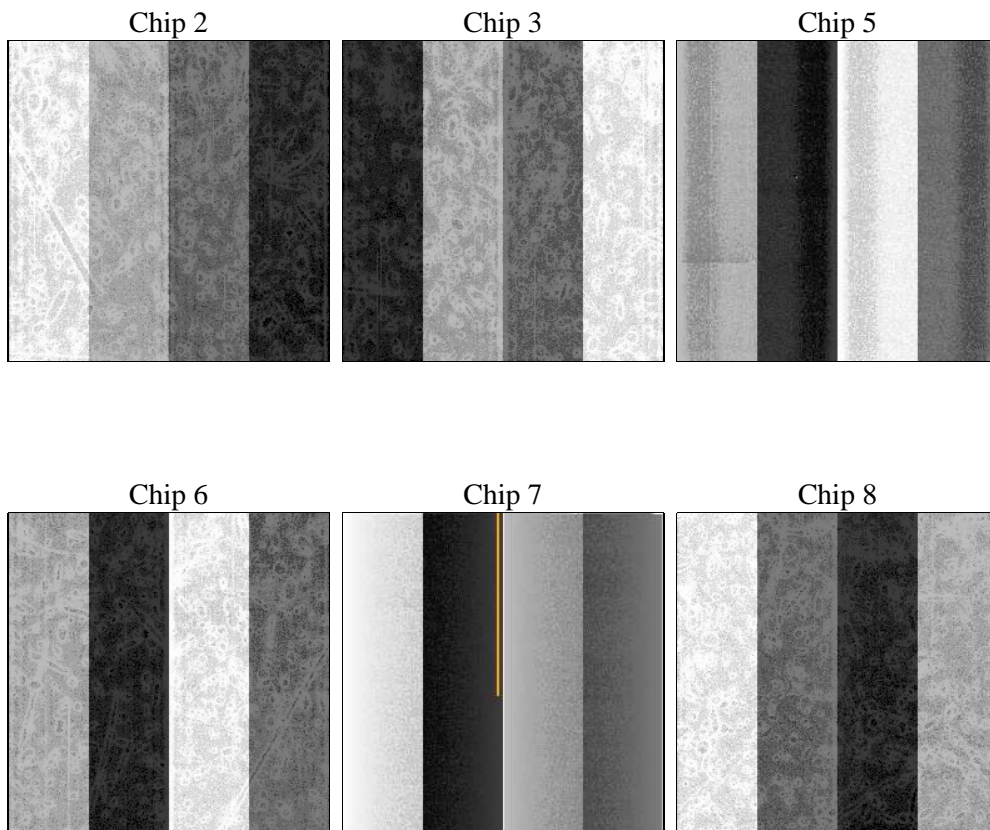
2 OBI

2.1 OBI

2.1.1 Images



2.1.2 Bias



2.1.3 Parameters

obi_num	0	Obi number	sched_exp_time	40500.000000	[s] Scheduled observation exposure time
ascdsver	8.4.5	Processing system revision	ontime	40256.000037476	Sum of GTIs [s]
caldbver	4.5.1.1	 	ontime2	40252.759077221	Sum of GTIs [s]
date	2012-09-17T02:10:59	Date and time of file creation	ontime3	40249.518116996	Sum of GTIs [s]
revision	3	Processing version of data	ontime5	40256.000037476	Sum of GTIs [s]
			ontime6	40256.000037476	Sum of GTIs [s]
			ontime7	40256.000037476	Sum of GTIs [s]
			ontime8	40252.759077236	Sum of GTIs [s]
			l1events	1777636	Number of level 1 events

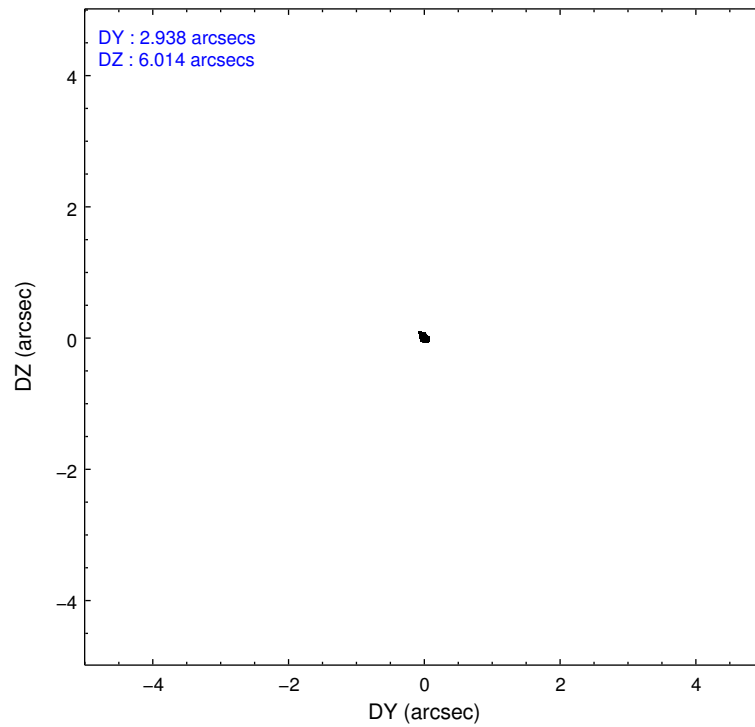
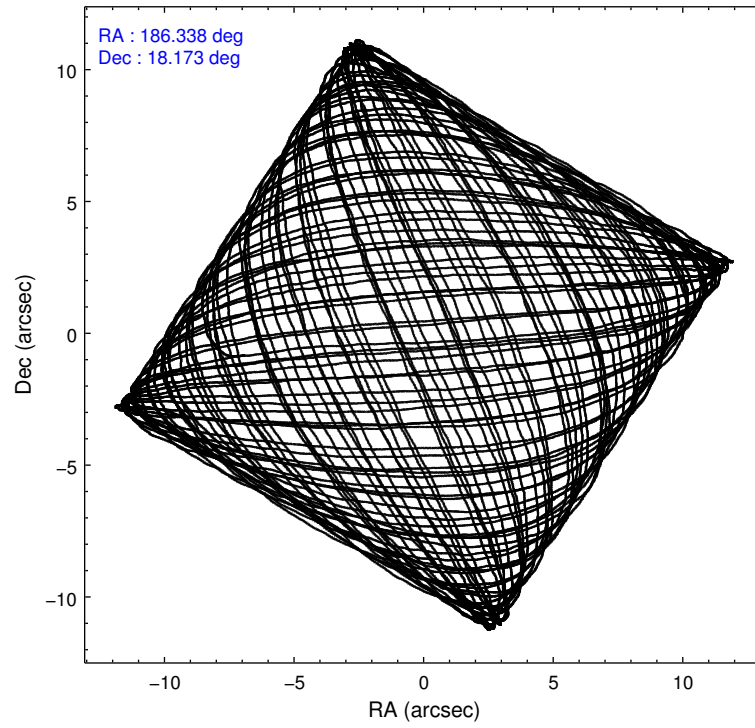
2.1.4 Events

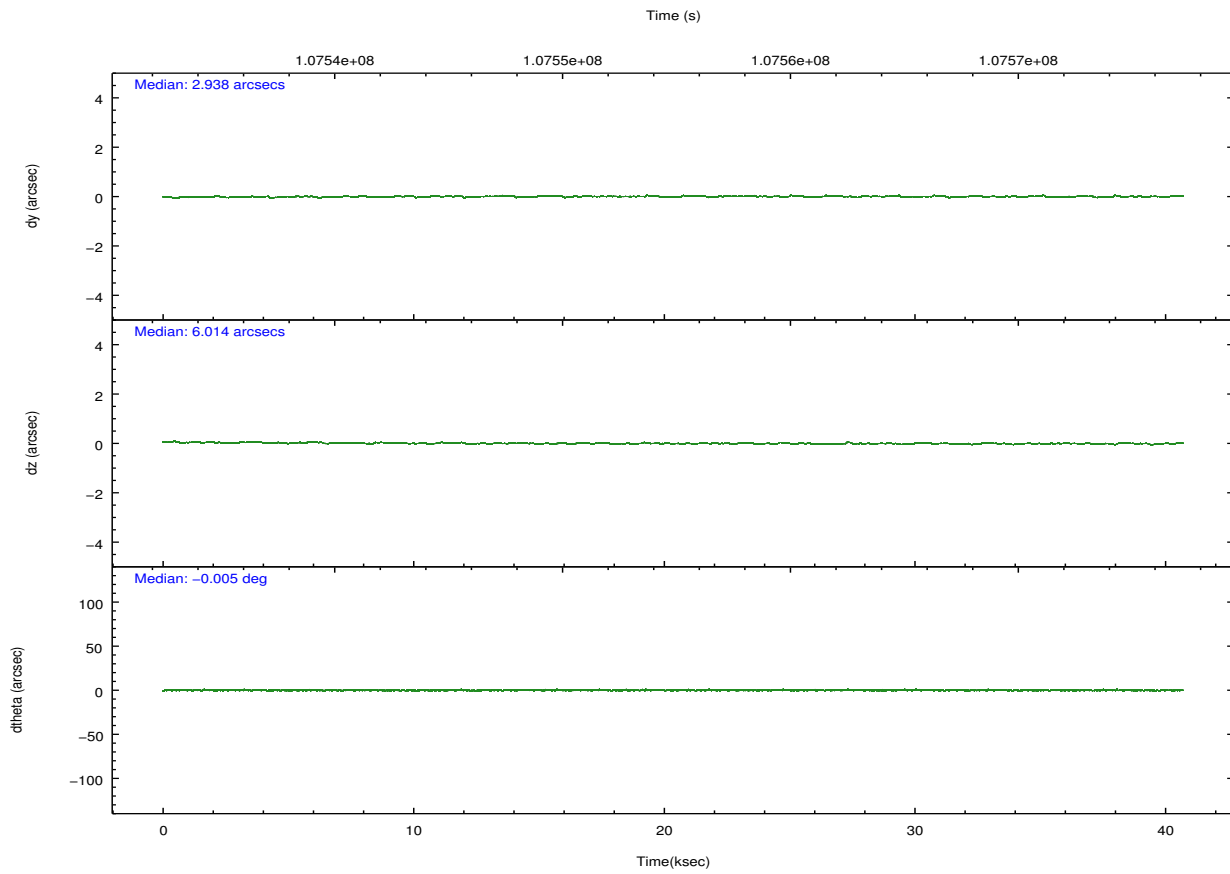
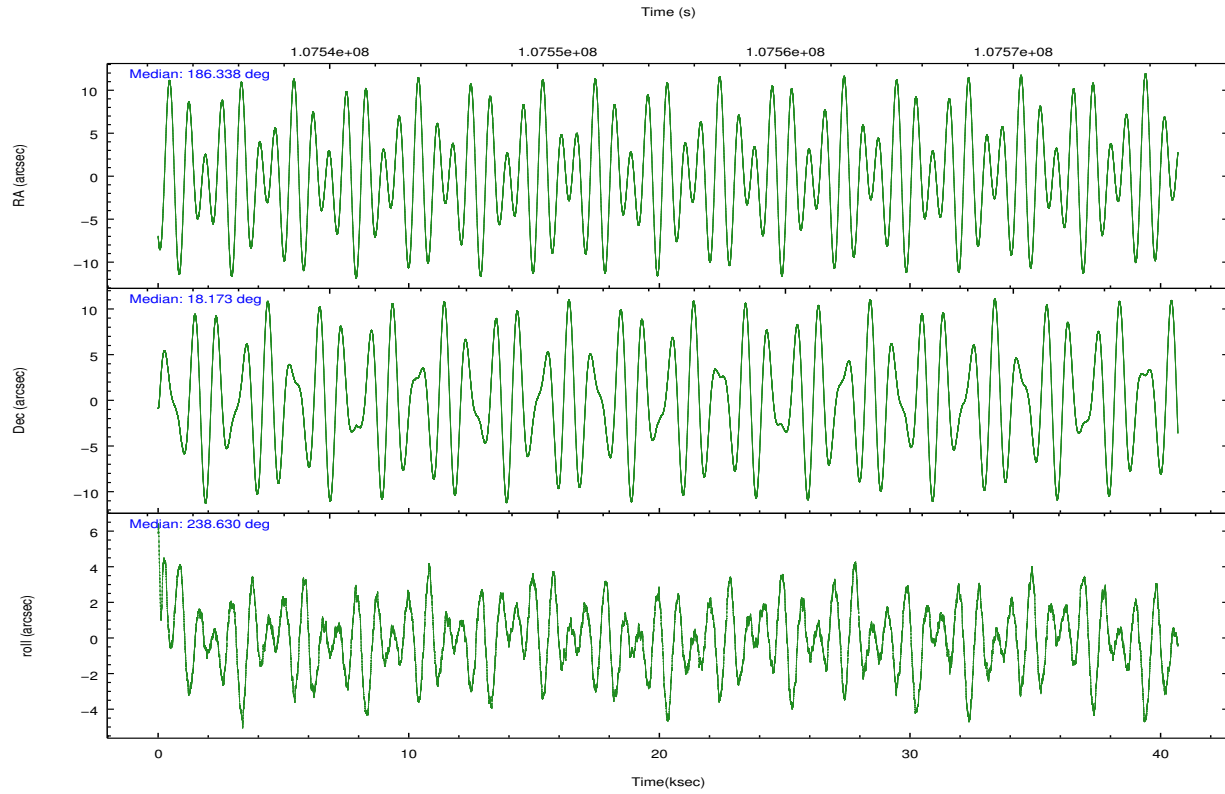
	ccd 2	ccd 3	ccd 5	ccd 6	ccd 7	ccd 8		ccd 2	ccd 3	ccd 5	ccd 6	ccd 7	ccd 8
level 1 events	255866	244352	376403	253284	330438	317293	grade 0 events	12259	12073	32574	12528	16519	20062
rejected events	227315	216519	195920	223505	186294	254606		4%	4%	8%	4%	4%	6%
rejected %	88%	88%	52%	88%	56%	80%	grade 1 events	102	102	532	130	257	158
								0%	0%	0%	0%	0%	0%
							grade 2 events	6005	5569	49656	5923	28666	13650
								2%	2%	13%	2%	8%	4%
							grade 3 events	2660	2714	7192	2954	13154	6759
								1%	1%	1%	1%	3%	2%
							grade 4 events	2629	2621	6650	2794	13061	6283
								1%	1%	1%	1%	3%	1%
							grade 5 events	8736	9336	29155	10336	30520	13243
								3%	3%	7%	4%	9%	4%
							grade 6 events	5001	4857	84425	5581	72762	15935
								1%	1%	22%	2%	22%	5%
							grade 7 events	218474	207080	166219	213038	155499	241203
								85%	84%	44%	84%	47%	76%

2.2 Compared Parameters

Parameter	Planned	Actual	Parameter	Planned	Actual
Instrument	ACIS	ACIS	Obspar format version number	7	7
Detector	ACIS-235678	ACIS-235678	Obspar file type	PREDICTED	ACTUAL
Grating	NONE	NONE	Obspar update status	NONE	UPDATED
Data mode	FAINT	FAINT	Number of optional ACIS chips dropped	0	0
Observation mode	POINTING	POINTING	On-chip summing requested	N	N
[deg] Pointing RA	186.338240	186.337846676731	Subarray requested	NONE	NONE
[deg] Pointing Dec	18.200296	18.17302188573704	Alternating exposures requested	N	N
[deg] Pointing Roll	238.478269	238.6350245269304	[s] Primary exposure time	0.000000	3.2
[mm] SIM focus pos	-0.684267	-0.6828225247311905			
[mm] SIM defocus	0	0.001444936568705701			
[mm] SIM translation stage pos	-190.132523	-190.1400660498719			
[mm] SIM translation stage offset	0	0.00754346686406393			
[s] Observation start time (MET)	107534696.184000	107534074.48506			
Observation start date	2001-05-29T14:43:52	2001-05-29T14:34:34			
[s] Observation end time (MET)	107575196.184000	107575438.36167			
Observation end date	2001-05-30T01:58:52	2001-05-30T02:03:58			
Read mode	TIMED	TIMED			

2.3 Aspect



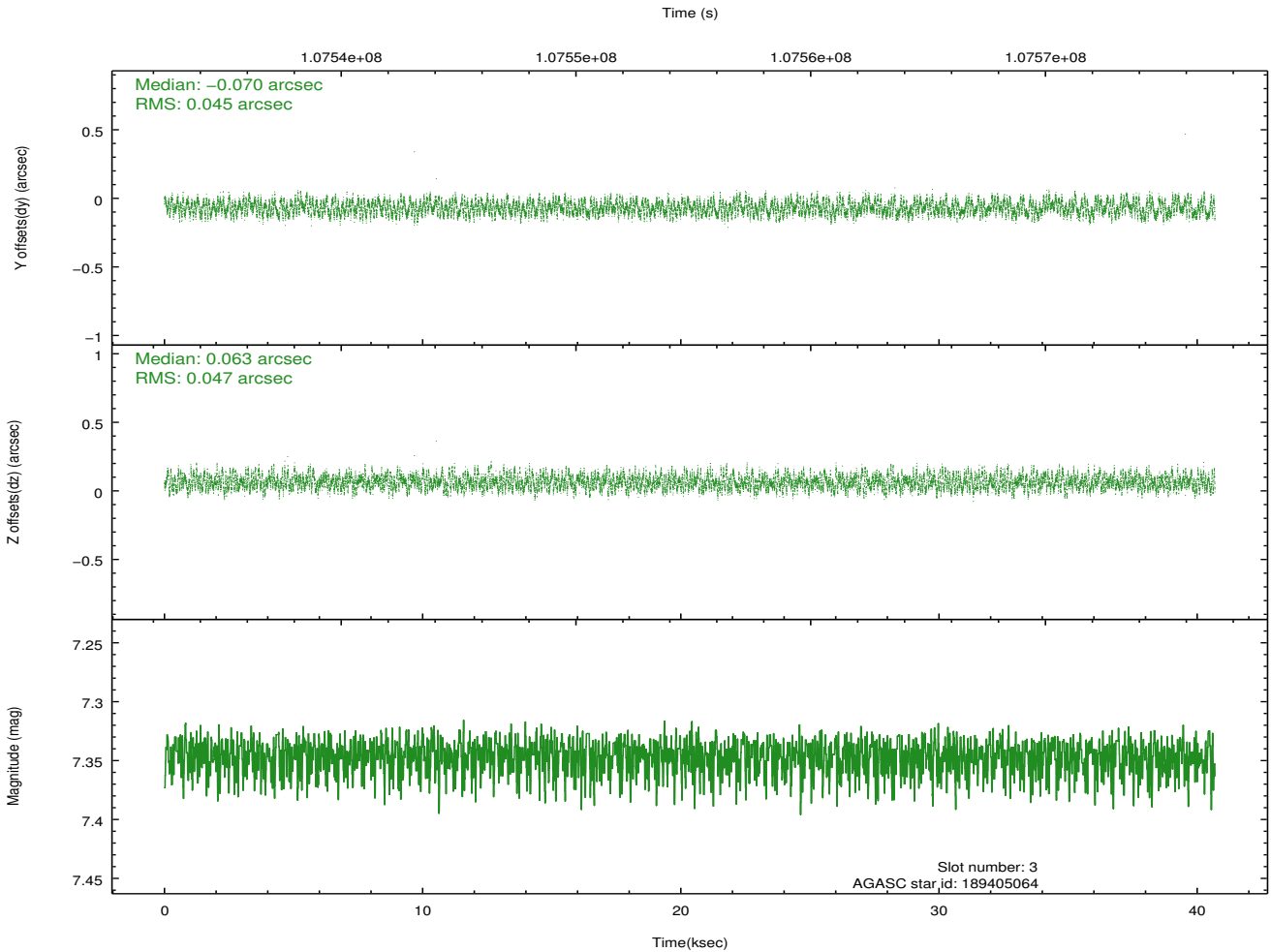
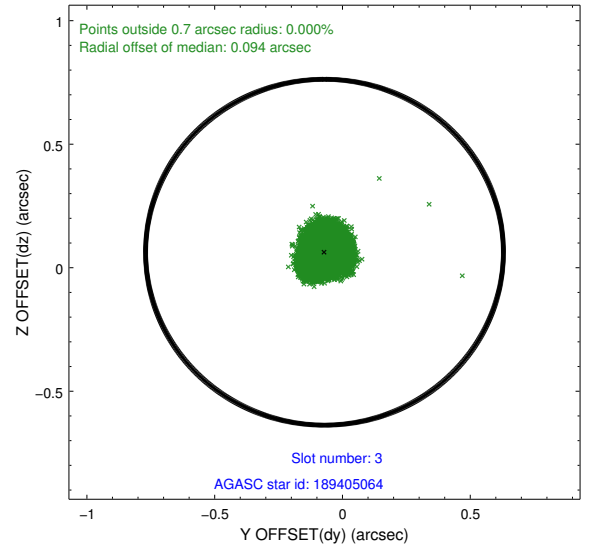
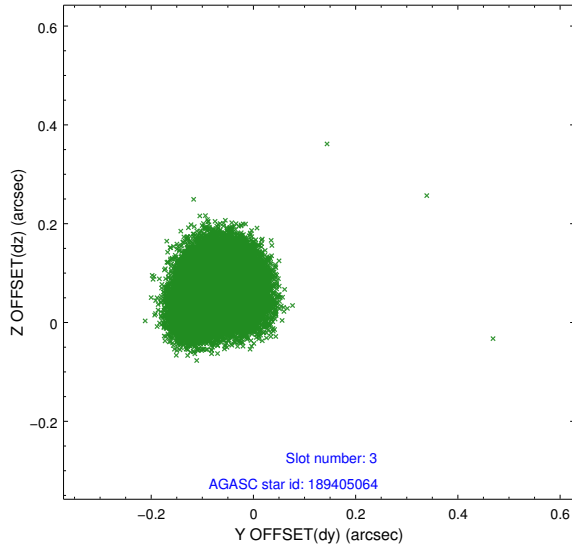


Slot Statistics

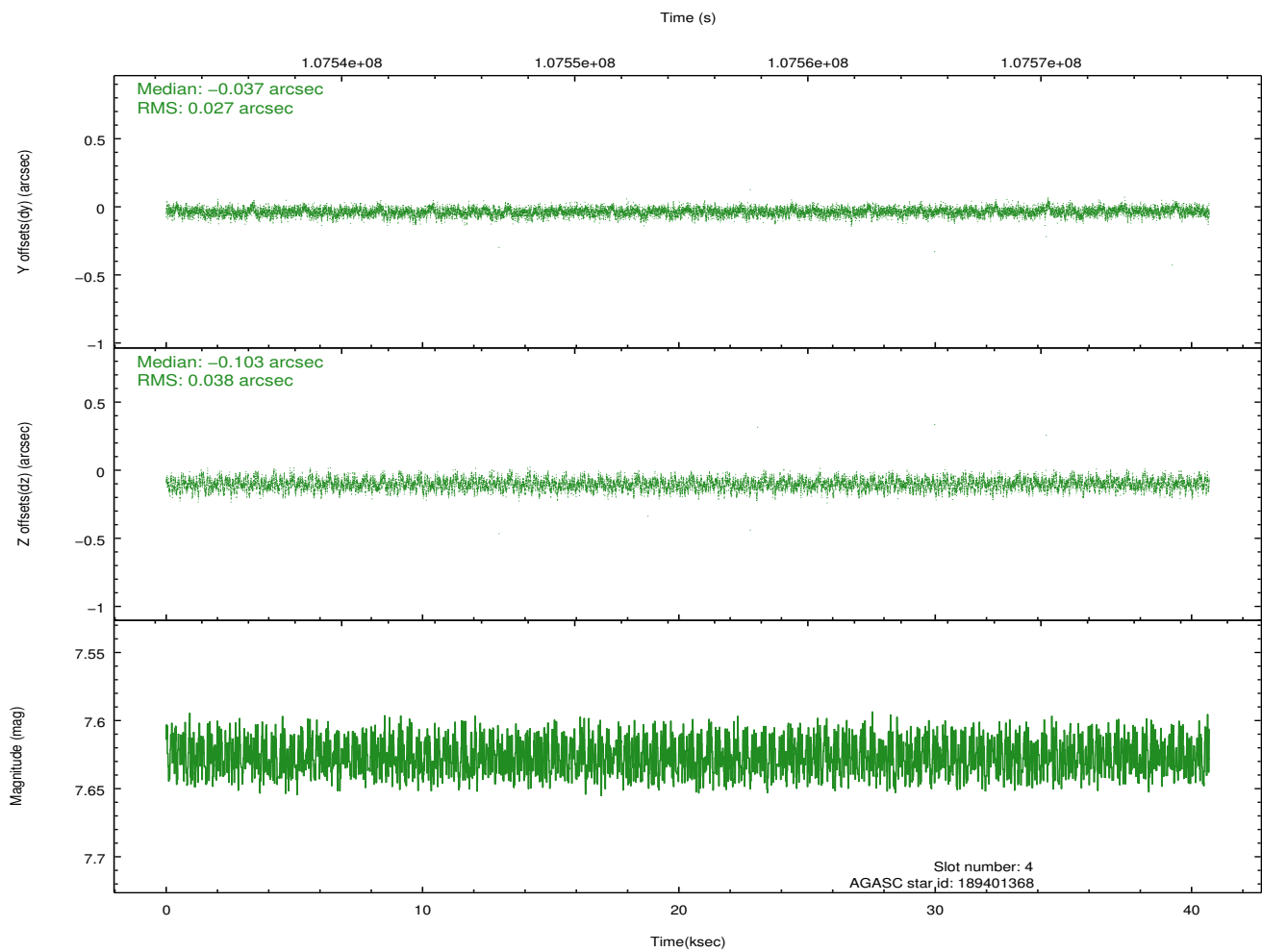
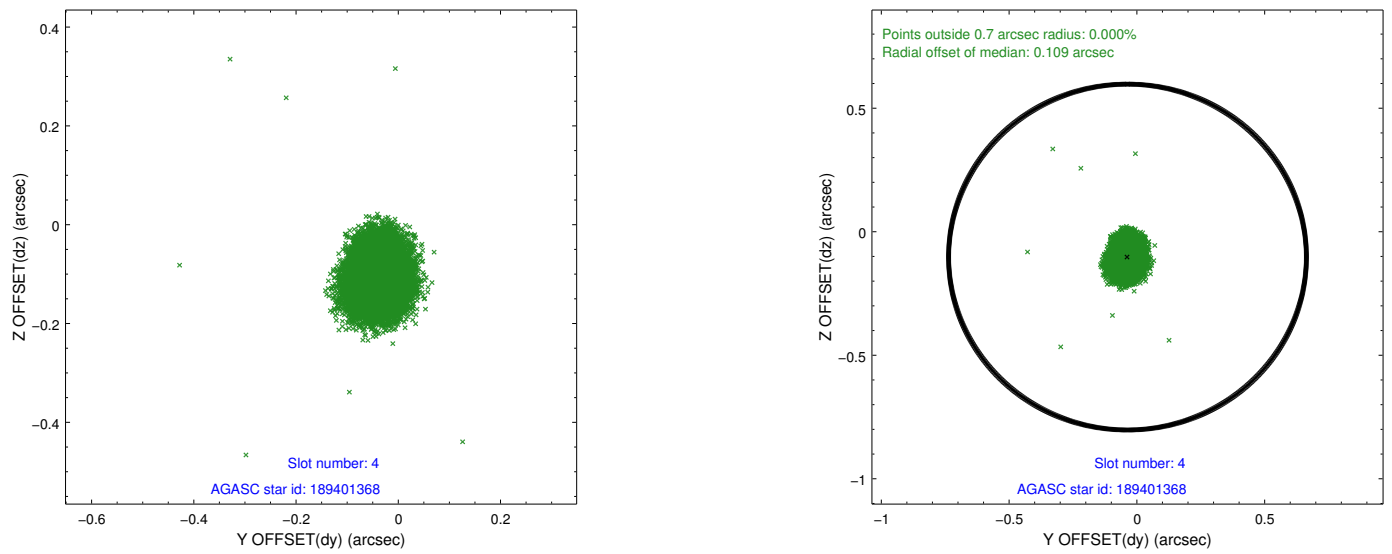
slot	status	id	mag	n_pts	med_dy	med_dz	dr1	dr2	ra	dec	mean_y	mean_z
0	FID	ACIS-S-2	7.11	9923	-0.024	0.013	0.007	0.011	0.000000	0.000000	-755.56	-1727.16
1	FID	ACIS-S-4	7.20	9922	-0.043	0.008	0.005	0.010	0.000000	0.000000	2157.65	181.37
2	FID	ACIS-S-5	7.23	9922	0.036	-0.012	0.006	0.011	0.000000	0.000000	-1808.37	174.95
3	GUIDE	189405064	7.35	19846	-0.070	0.063	0.072	0.106	186.887888	17.834342	136.30	2293.03
4	GUIDE	189401368	7.63	19846	-0.037	-0.103	0.049	0.081	186.150770	18.668355	-1101.62	-1426.32
5	GUIDE	189403984	8.27	19842	-0.042	0.068	0.066	0.108	187.021519	18.330647	-1624.13	1742.66
6	GUIDE	189665040	8.41	19840	-0.098	0.003	0.058	0.097	186.390146	18.867028	-2137.91	-1104.35
7	GUIDE	189411056	8.71	19844	0.251	-0.032	0.058	0.095	186.168211	17.852769	1371.79	157.38

2.4 Star Slots

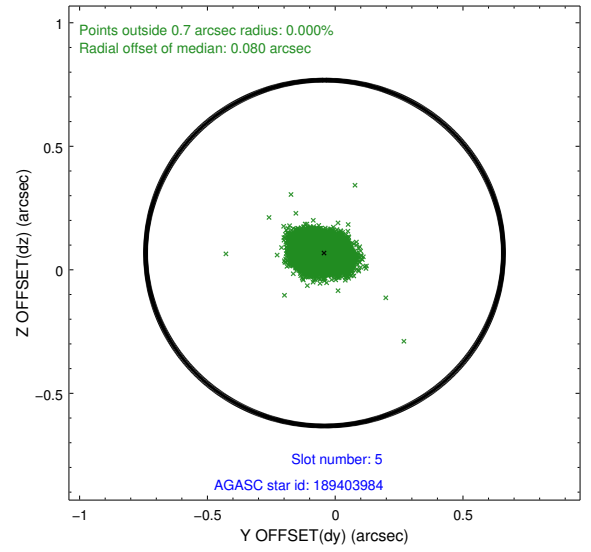
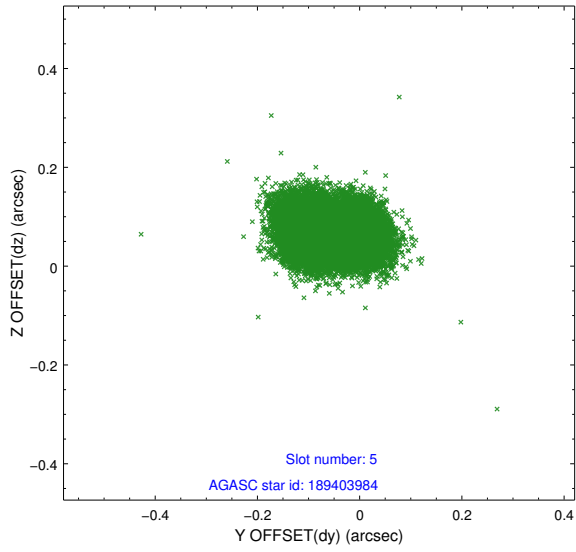
2.4.1 Slot 3



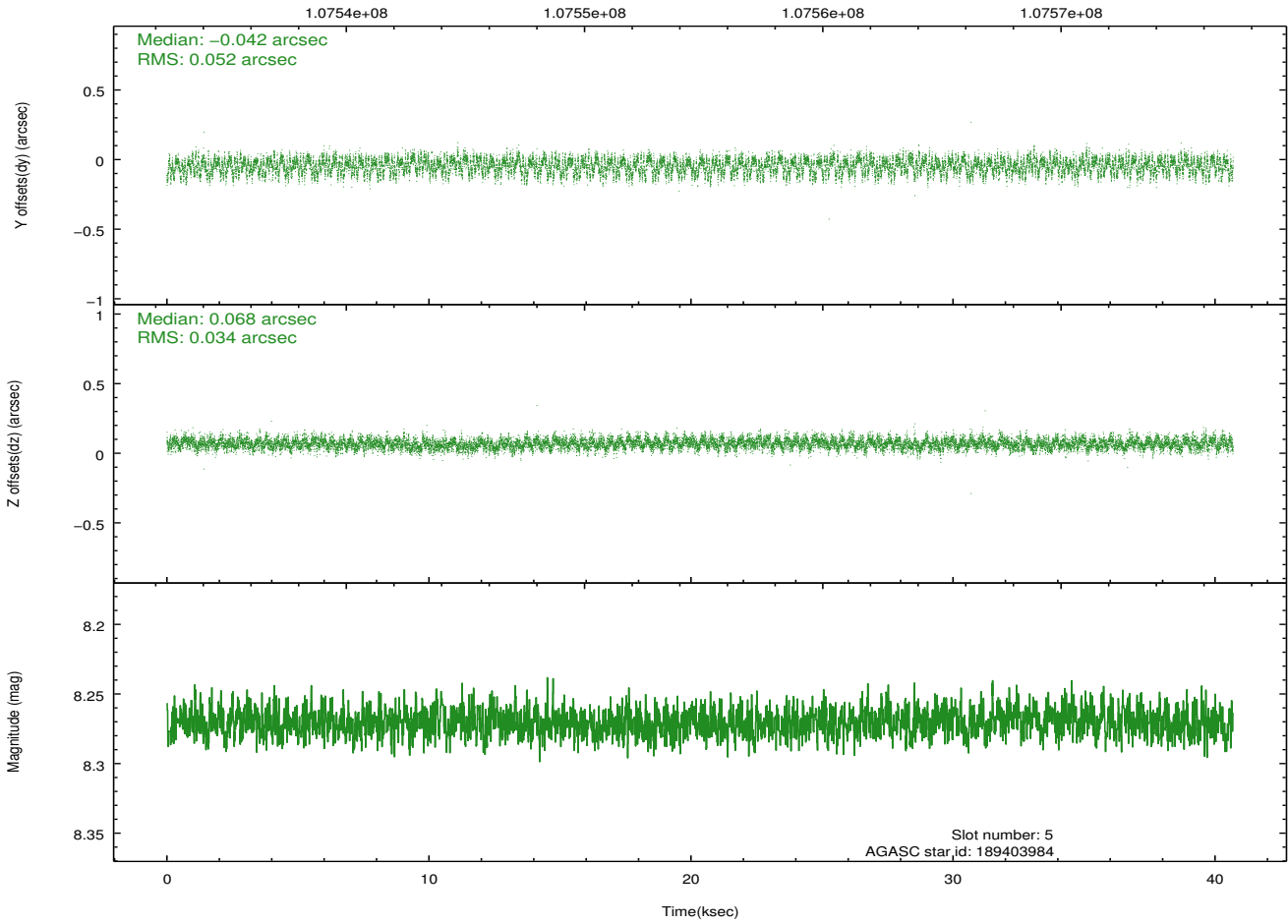
2.4.2 Slot 4



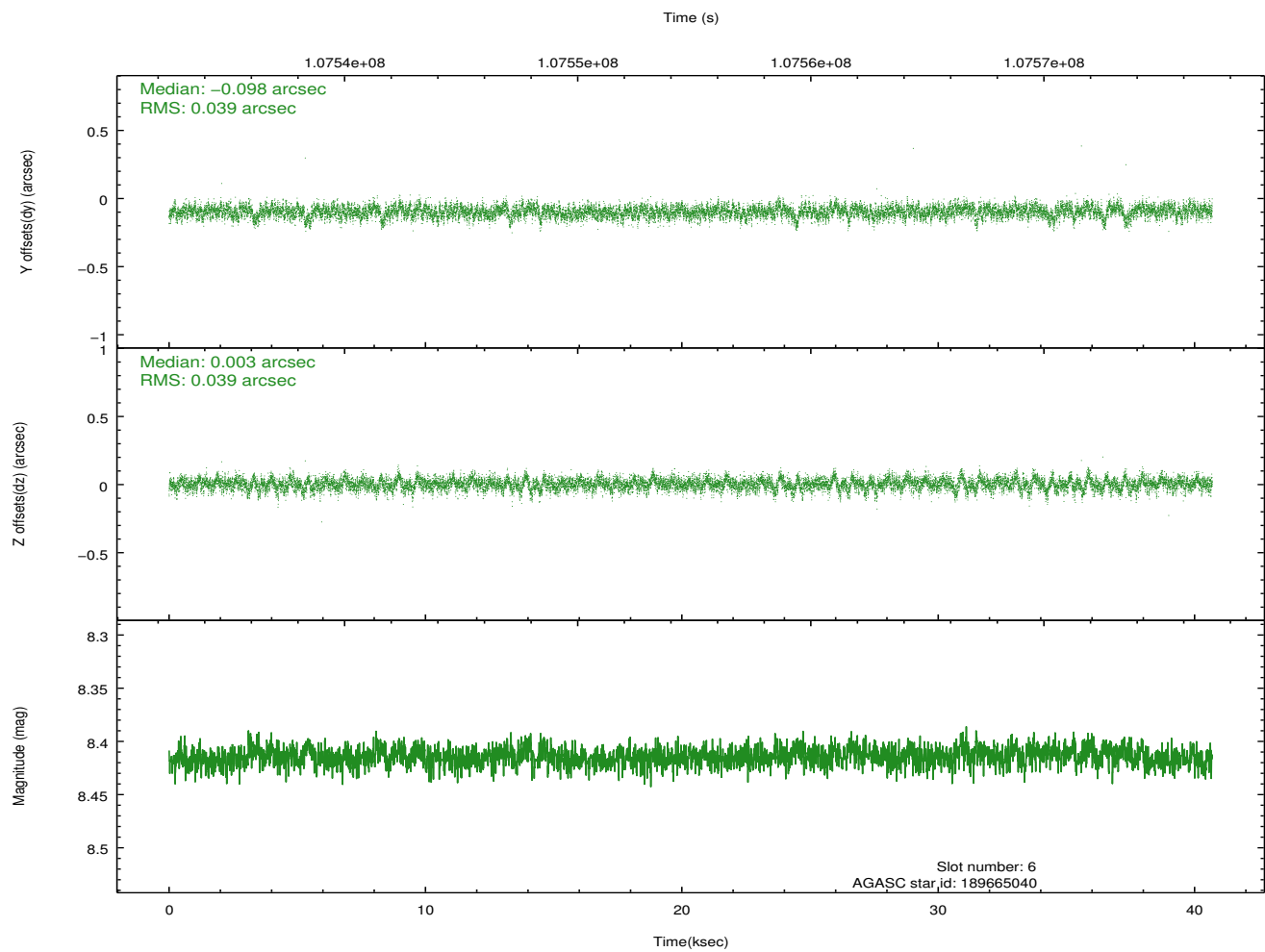
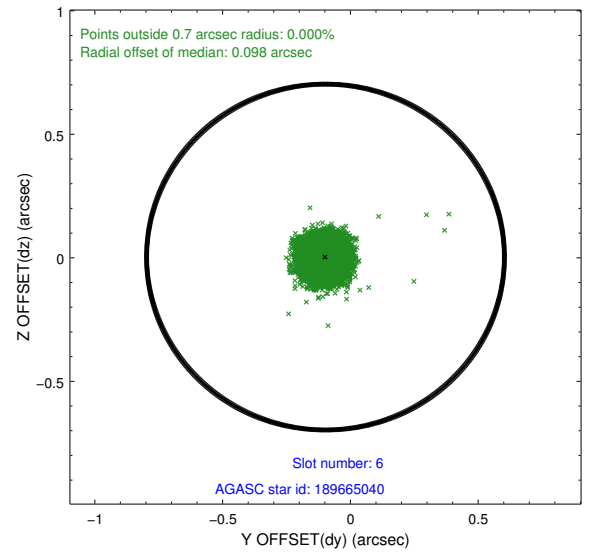
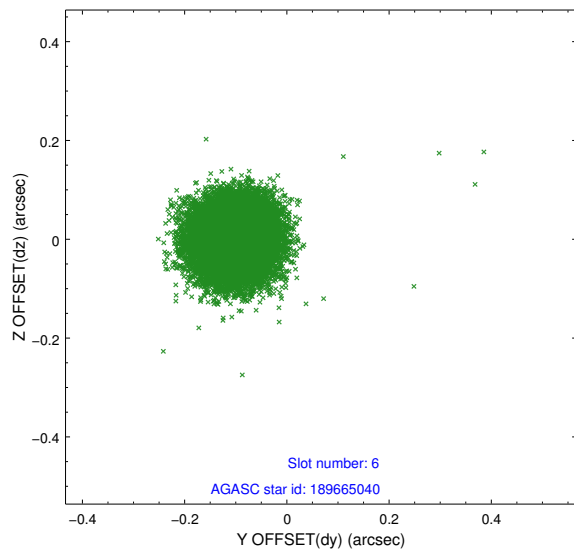
2.4.3 Slot 5



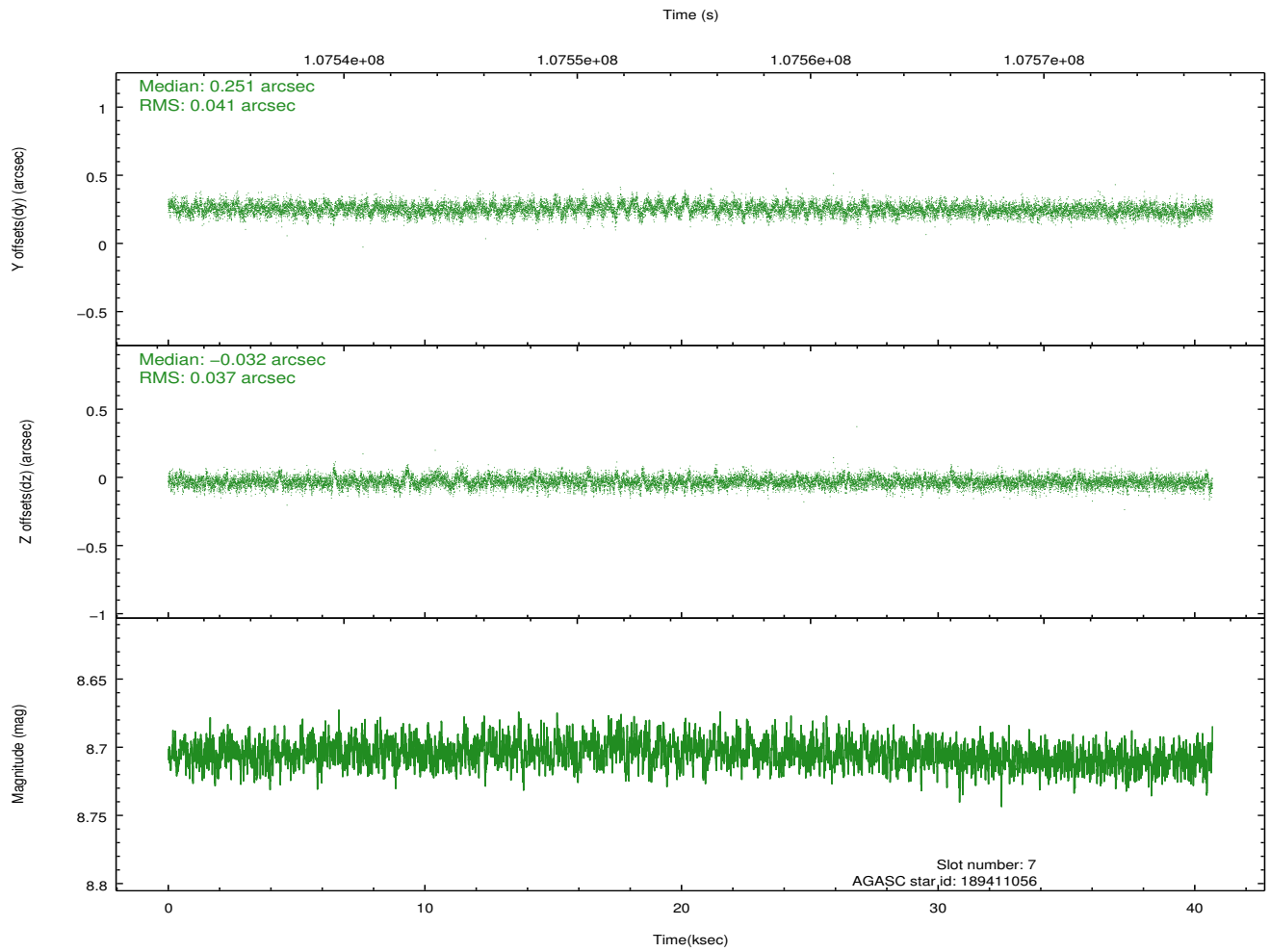
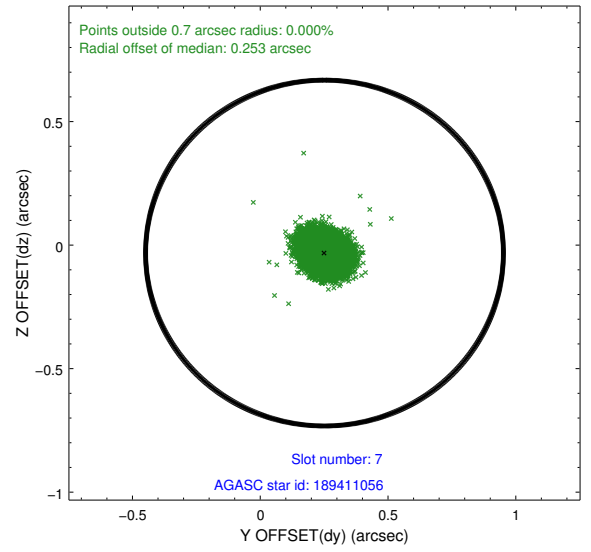
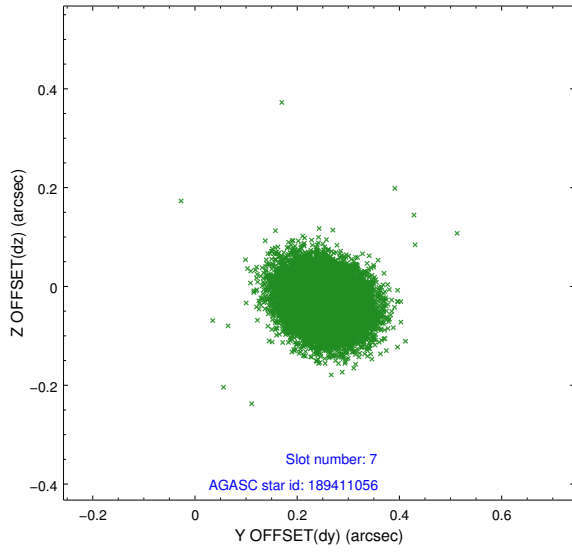
Time (s)



2.4.4 Slot 6

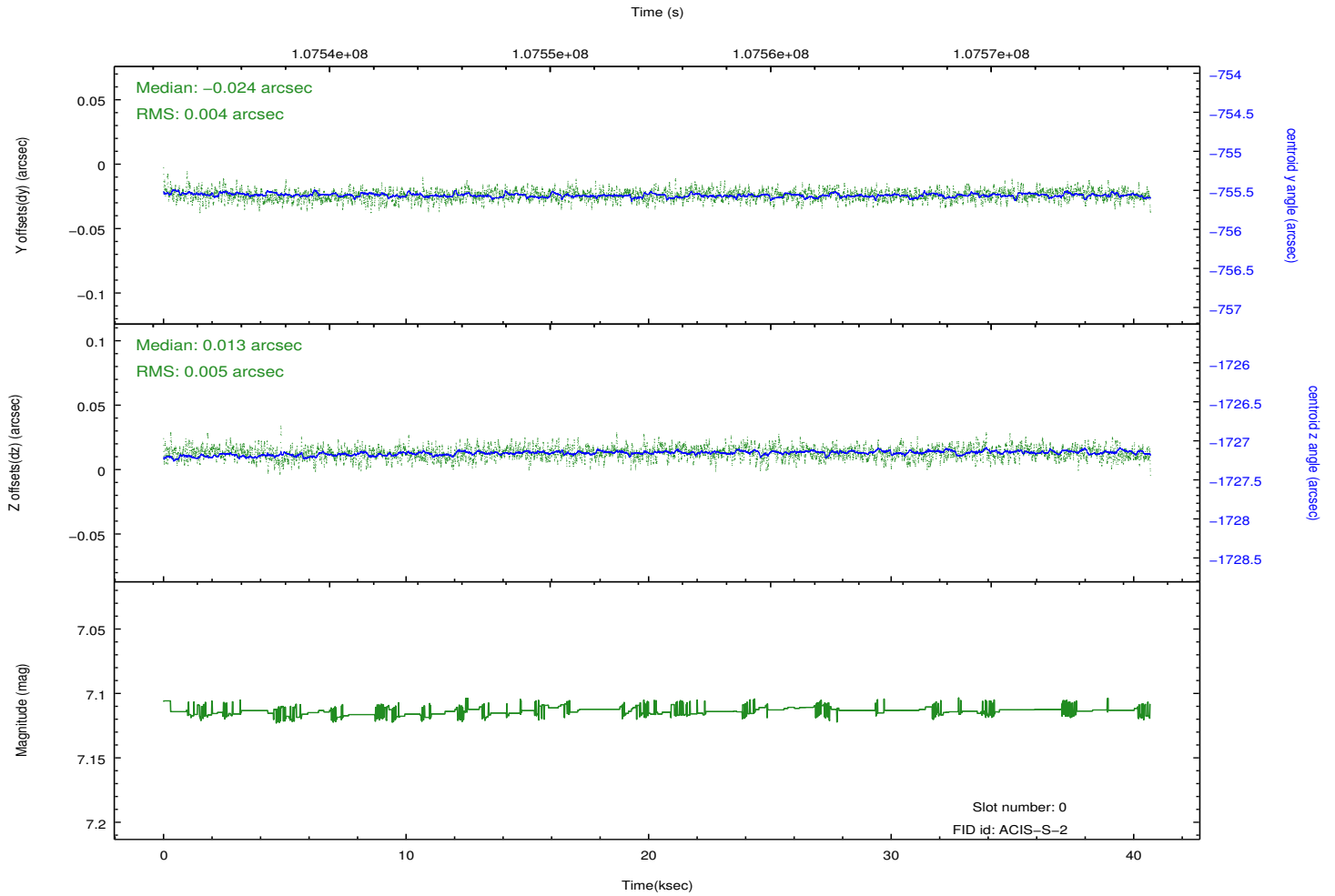
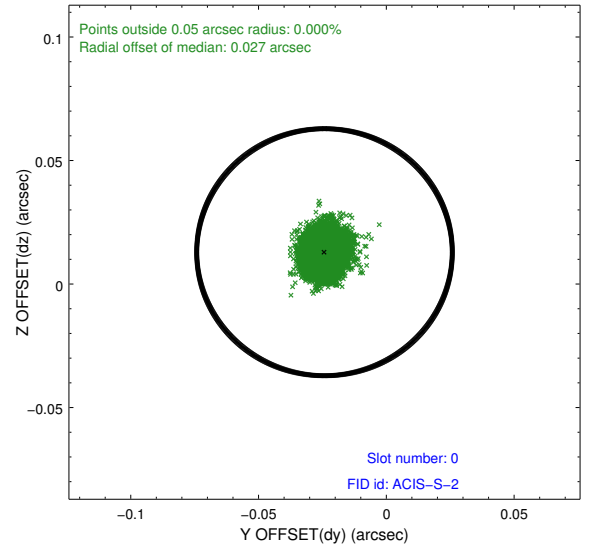
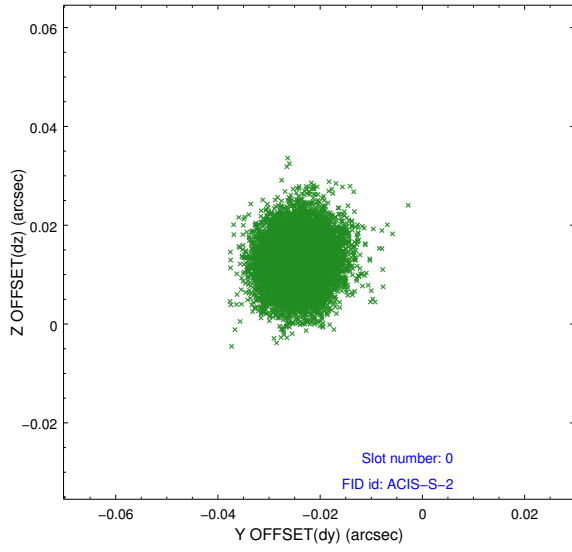


2.4.5 Slot 7

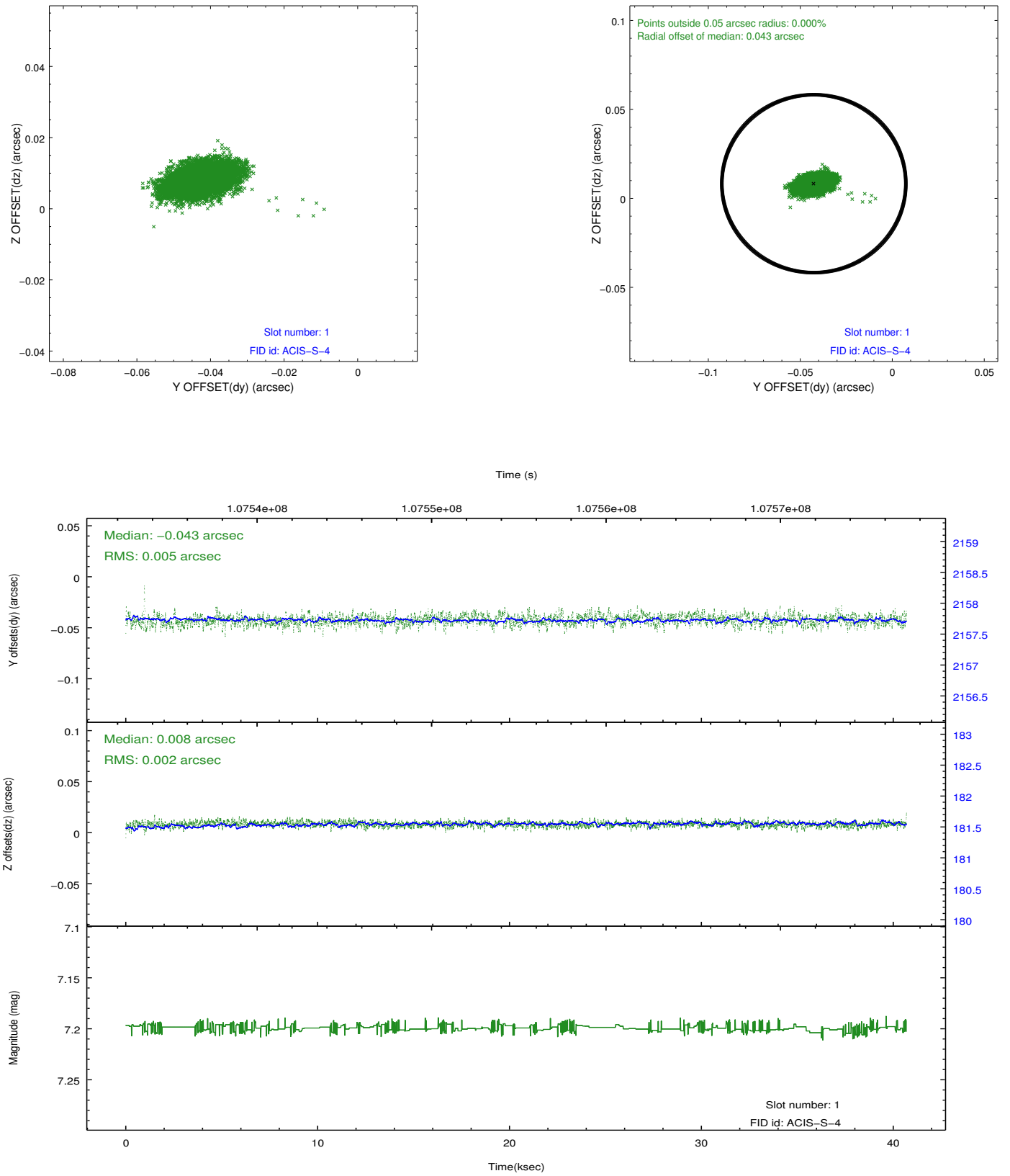


2.5 FID Slots

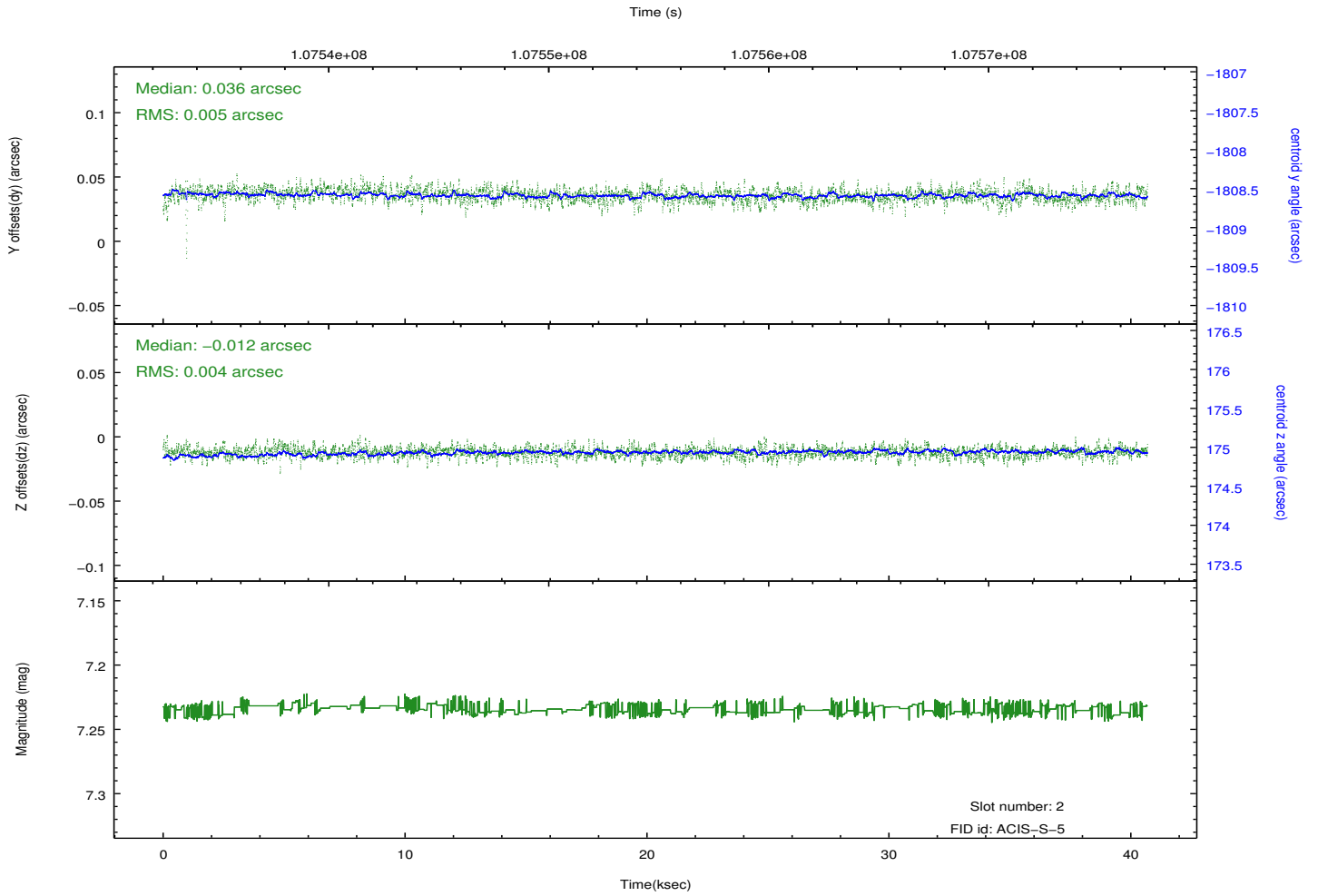
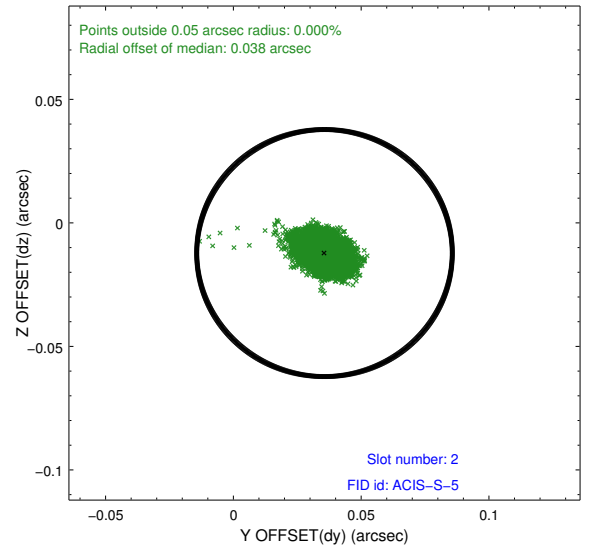
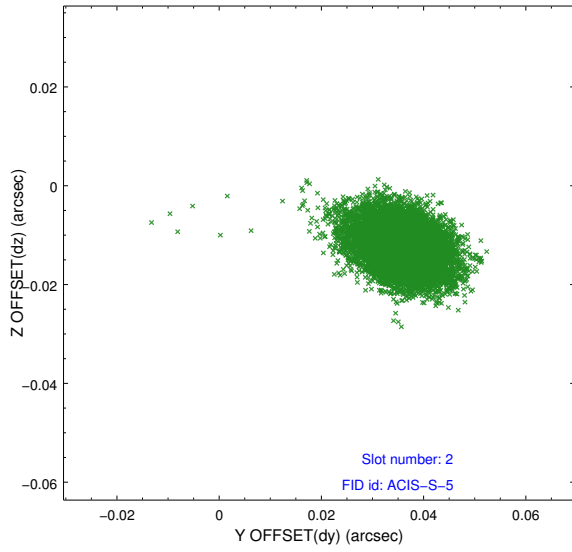
2.5.1 Slot 0



2.5.2 Slot 1



2.5.3 Slot 2



A Summary

A.1 Status

V&V Scientist	Jen Lauer
V&V Date (YYYY-MM-DD)	2012.09.19
V&V Edition	1
V&V Disposition and Status	OK
V&V Charge Time	40.259

A.2 Comments