

V&V Reference Report

L2 ASCDS Version : 8.4.5

Observation 2036 - L2 Version 3
Chandra X-Ray Center

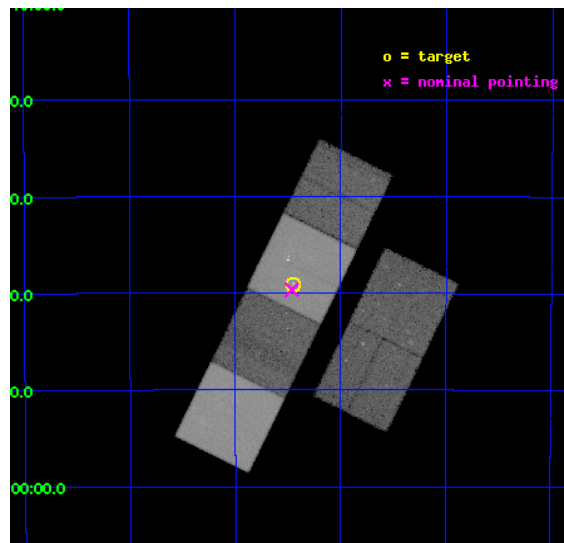
L2 Processing Date : Sep 26 2012

Contents

1	Front	2
2	OBI	3
2.1	OBI	3
2.1.1	Images	3
2.1.2	Bias	3
2.1.3	Parameters	4
2.1.4	Events	4
2.2	Compared Parameters	5
2.3	Aspect	6
2.4	Star Slots	9
2.4.1	Slot 3	9
2.4.2	Slot 4	10
2.4.3	Slot 5	11
2.4.4	Slot 6	12
2.5	FID Slots	13
2.5.1	Slot 0	13
2.5.2	Slot 1	14
2.5.3	Slot 2	15
A	Summary	16
A.1	Status	16
A.2	Comments	16

1 Front

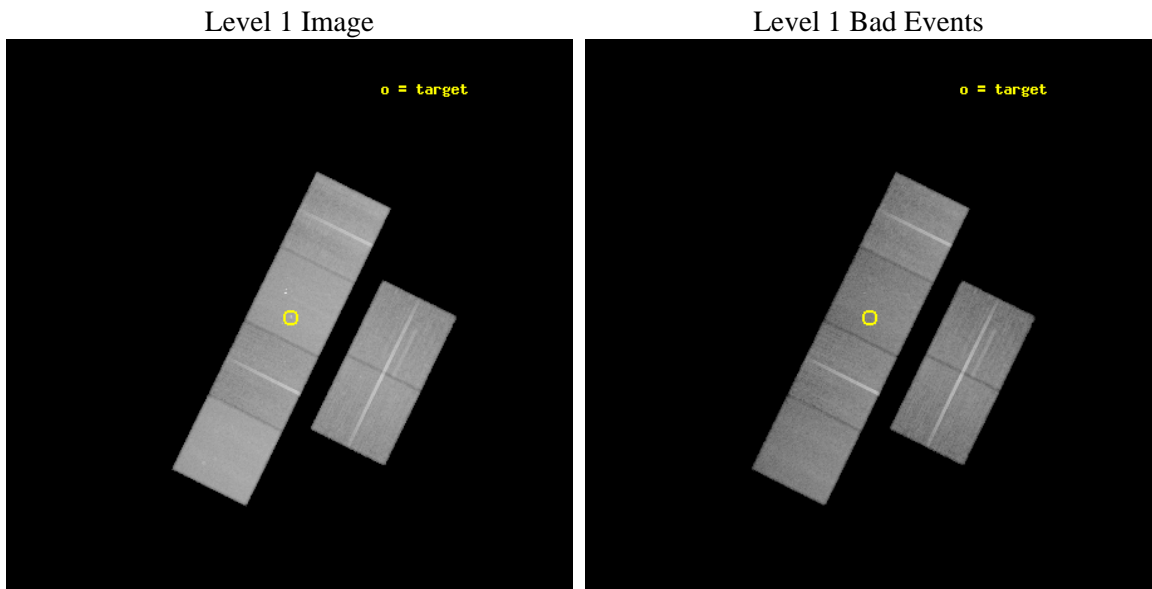
seq_num	600170	Sequence number
obs_id	2036	Observation id
title	THE X-RAY PROPERTIES OF ULTRALUMINOUS GALAXIES: COSMOLOGICAL IMPLICATIONS	Proposal title
observer	Dr. Tim Heckman	Principal investigator
object	IRAS 20551-4250	Source name
dtcycle	0	
cycle	P	events from which exps? Prim/Second/Both
ra_targ	314.612083	Observer's specified target RA [deg]
dec_targ	-42.651722	Observer's specified target Dec [deg]
ra_nom	314.61573022162	Nominal RA [deg]
dec_nom	-42.661070464158	Nominal Dec [deg]
roll_nom	296.18320709179	Nominal Roll [deg]
revision	3	Processing version of data
ontime	45446.40004231	Sum of GTIs [s]
livetime	44870.930360438	Livetime [s]
ontime2	45446.40004231	Sum of GTIs [s]
ontime3	45443.159082055	Sum of GTIs [s]
ontime5	45446.40004231	Sum of GTIs [s]
ontime6	45446.40004231	Sum of GTIs [s]
ontime7	45446.40004231	Sum of GTIs [s]
ontime8	45443.159082055	Sum of GTIs [s]
l2events	486711	Number of level 2 events



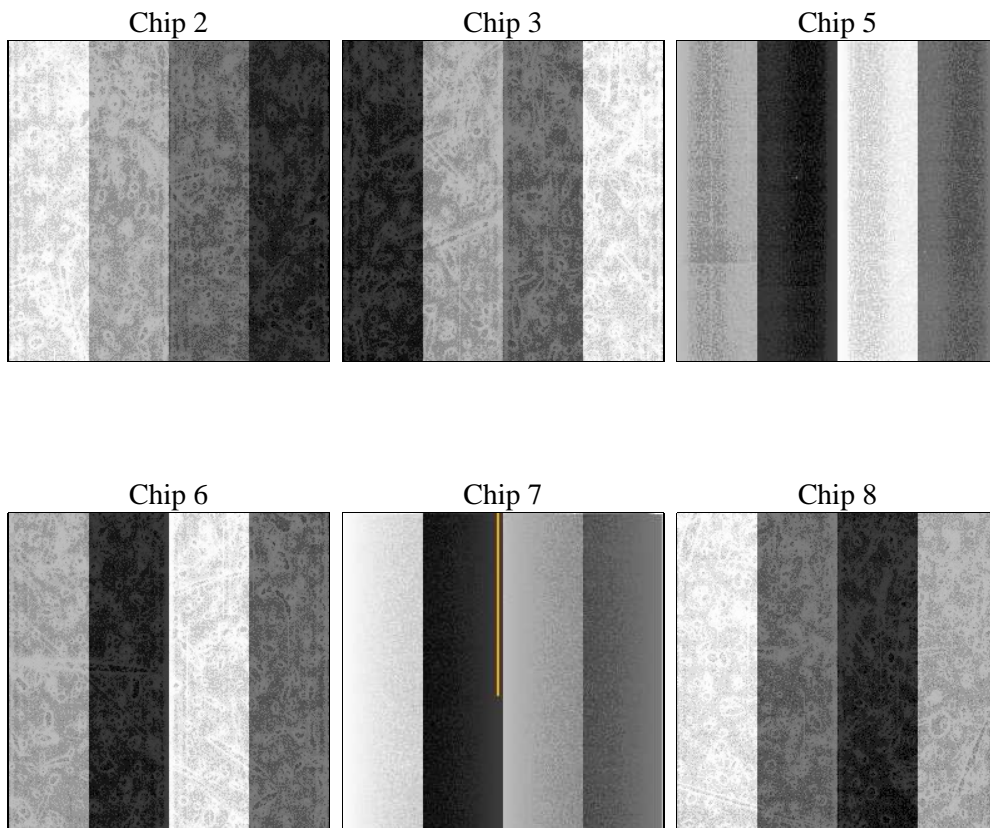
2 OBI

2.1 OBI

2.1.1 Images



2.1.2 Bias



2.1.3 Parameters

obi_num	0	Obi number	sched_exp_time	45500.000000	[s] Scheduled observation exposure time
ascdsver	8.4.5	Processing system revision	ontime	45446.40004231	Sum of GTIs [s]
caldbver	4.5.1.1	 	ontime2	45446.40004231	Sum of GTIs [s]
date	2012-09-26T05:33:52	Date and time of file creation	ontime3	45443.159082055	Sum of GTIs [s]
revision	3	Processing version of data	ontime5	45446.40004231	Sum of GTIs [s]
			ontime6	45446.40004231	Sum of GTIs [s]
			ontime7	45446.40004231	Sum of GTIs [s]
			ontime8	45443.159082055	Sum of GTIs [s]
			l1events	2011154	Number of level 1 events

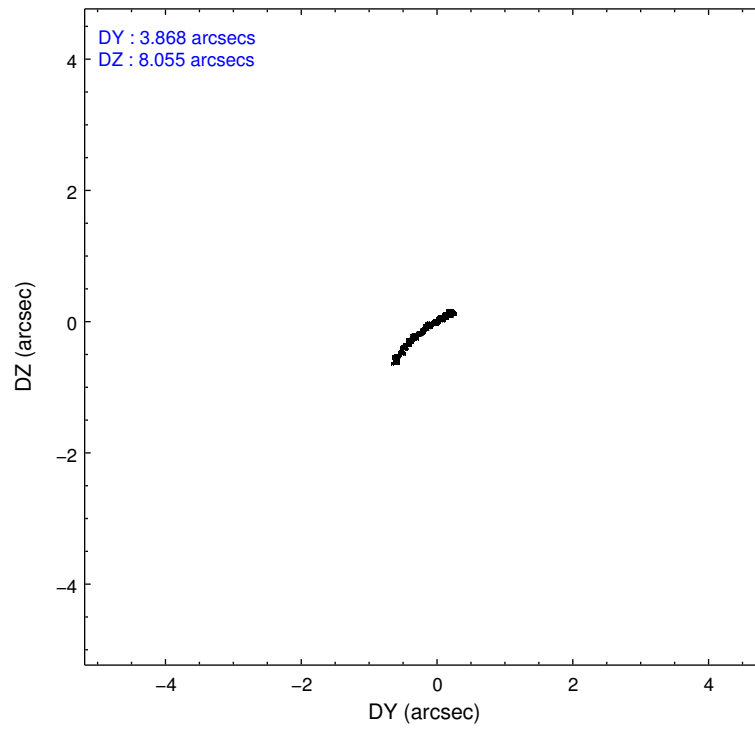
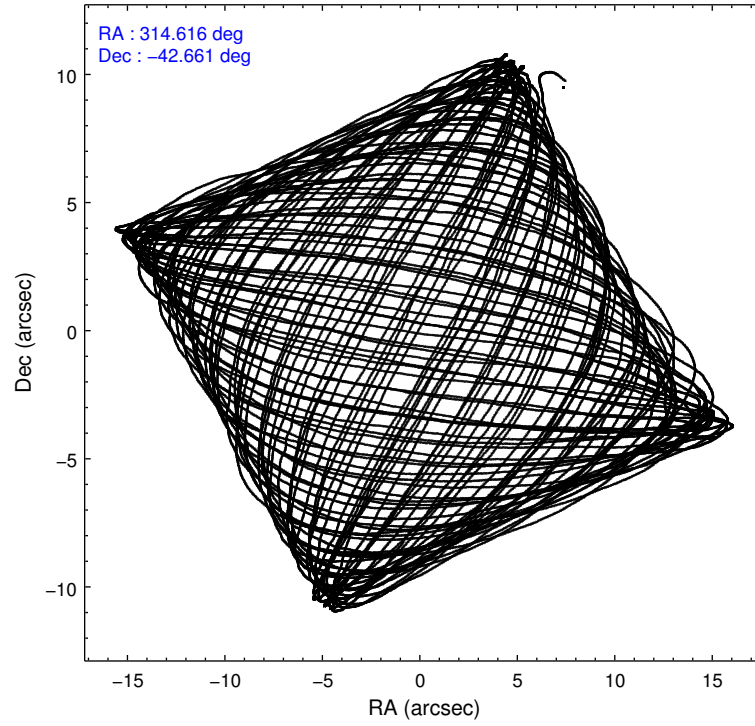
2.1.4 Events

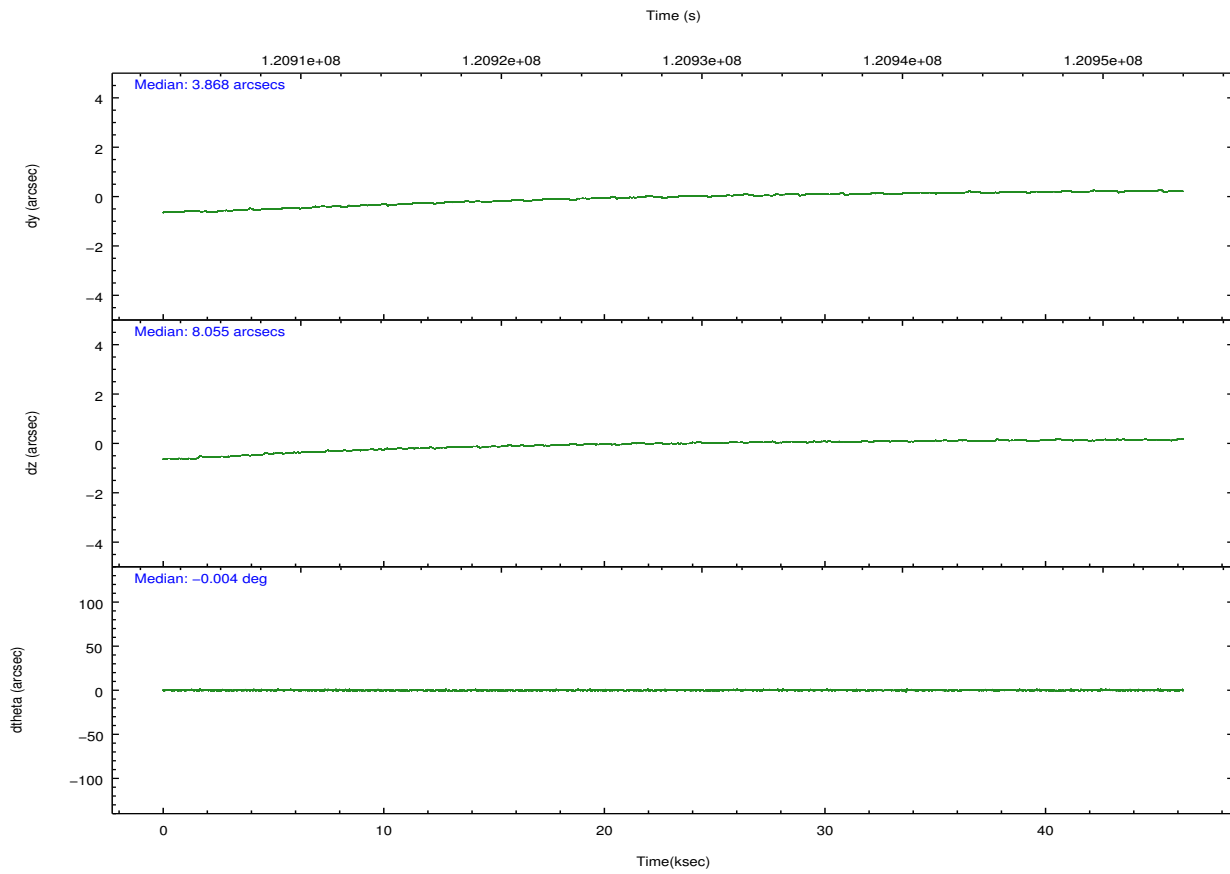
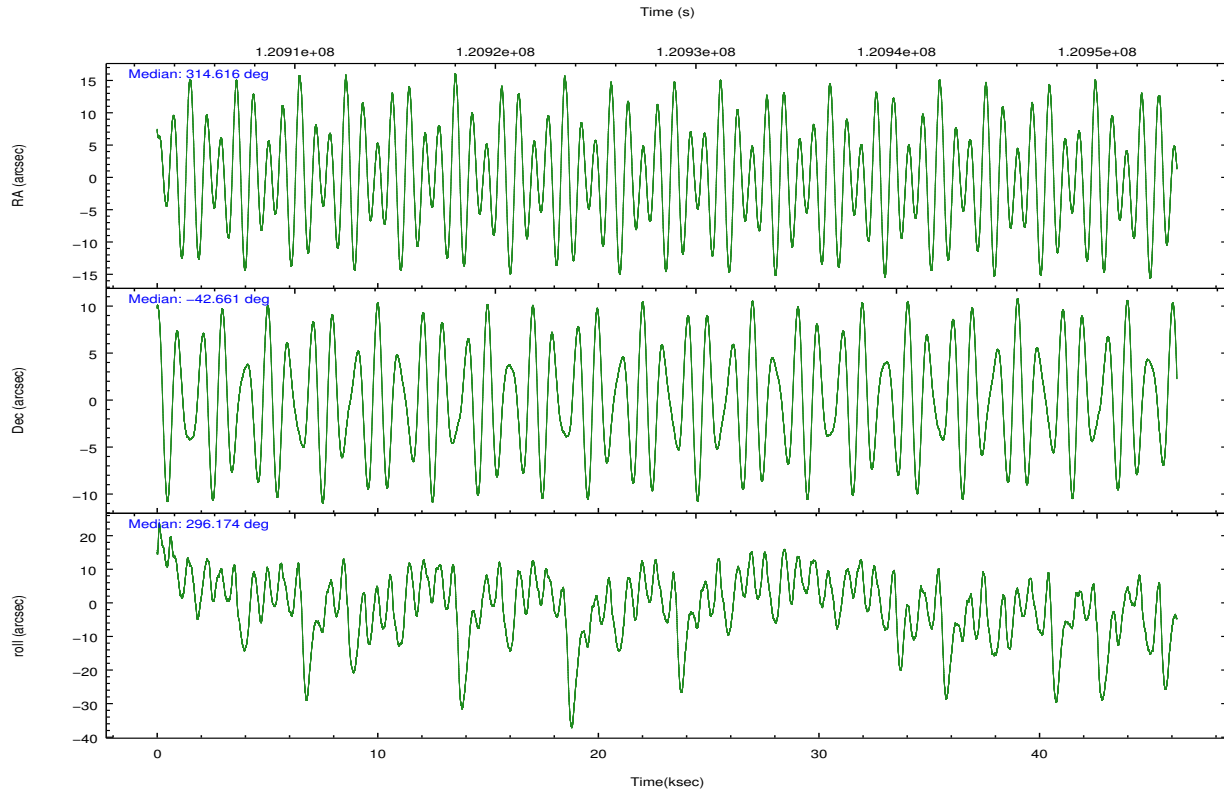
	ccd 2	ccd 3	ccd 5	ccd 6	ccd 7	ccd 8		ccd 2	ccd 3	ccd 5	ccd 6	ccd 7	ccd 8
level 1 events	288568	278033	409685	289879	385246	359743	grade 0 events	16380	15831	16936	16151	18774	26959
rejected events	252318	243069	218807	252790	212141	280871		5%	5%	4%	5%	4%	7%
rejected %	87%	87%	53%	87%	55%	78%	grade 1 events	136	153	483	134	344	250
								0%	0%	0%	0%	0%	0%
							grade 2 events	7647	6844	56349	7437	34307	16272
								2%	2%	13%	2%	8%	4%
							grade 3 events	3165	3147	8819	3477	15706	8640
								1%	1%	2%	1%	4%	2%
							grade 4 events	3052	3054	8586	3228	15494	7976
								1%	1%	2%	1%	4%	2%
							grade 5 events	10044	10938	30098	12249	35267	15352
								3%	3%	7%	4%	9%	4%
							grade 6 events	6010	6091	100198	6798	88845	19028
								2%	2%	24%	2%	23%	5%
							grade 7 events	242134	231975	188216	240405	176509	265266
								83%	83%	45%	82%	45%	73%

2.2 Compared Parameters

Parameter	Planned	Actual	Parameter	Planned	Actual
Instrument	ACIS	ACIS	Obspar format version number	7	7
Detector	ACIS-235678	ACIS-235678	Obspar file type	PREDICTED	ACTUAL
Grating	NONE	NONE	Obspar update status	NONE	UPDATED
Data mode	FAINT	FAINT	Number of optional ACIS chips dropped	0	0
Observation mode	POINTING	POINTING	On-chip summing requested	N	N
[deg] Pointing RA	314.584698	314.6157302216193	Subarray requested	NONE	NONE
[deg] Pointing Dec	-42.646159	-42.66107046415819	Alternating exposures requested	N	N
[deg] Pointing Roll	296.005554	296.1832070917899	[s] Primary exposure time	0.000000	3.2
[mm] SIM focus pos	-0.684267	-0.6828225247311905			
[mm] SIM defocus	0	0.001444936568705701			
[mm] SIM translation stage pos	-190.132523	-190.1400660498719			
[mm] SIM translation stage offset	0	0.00754346686406393			
[s] Observation start time (MET)	120906175.184000	120904946.83634			
Observation start date	2001-10-31T09:01:51	2001-10-31T08:42:26			
[s] Observation end time (MET)	120951675.184000	120952448.92573			
Observation end date	2001-10-31T21:40:11	2001-10-31T21:54:08			
Read mode	TIMED	TIMED			

2.3 Aspect



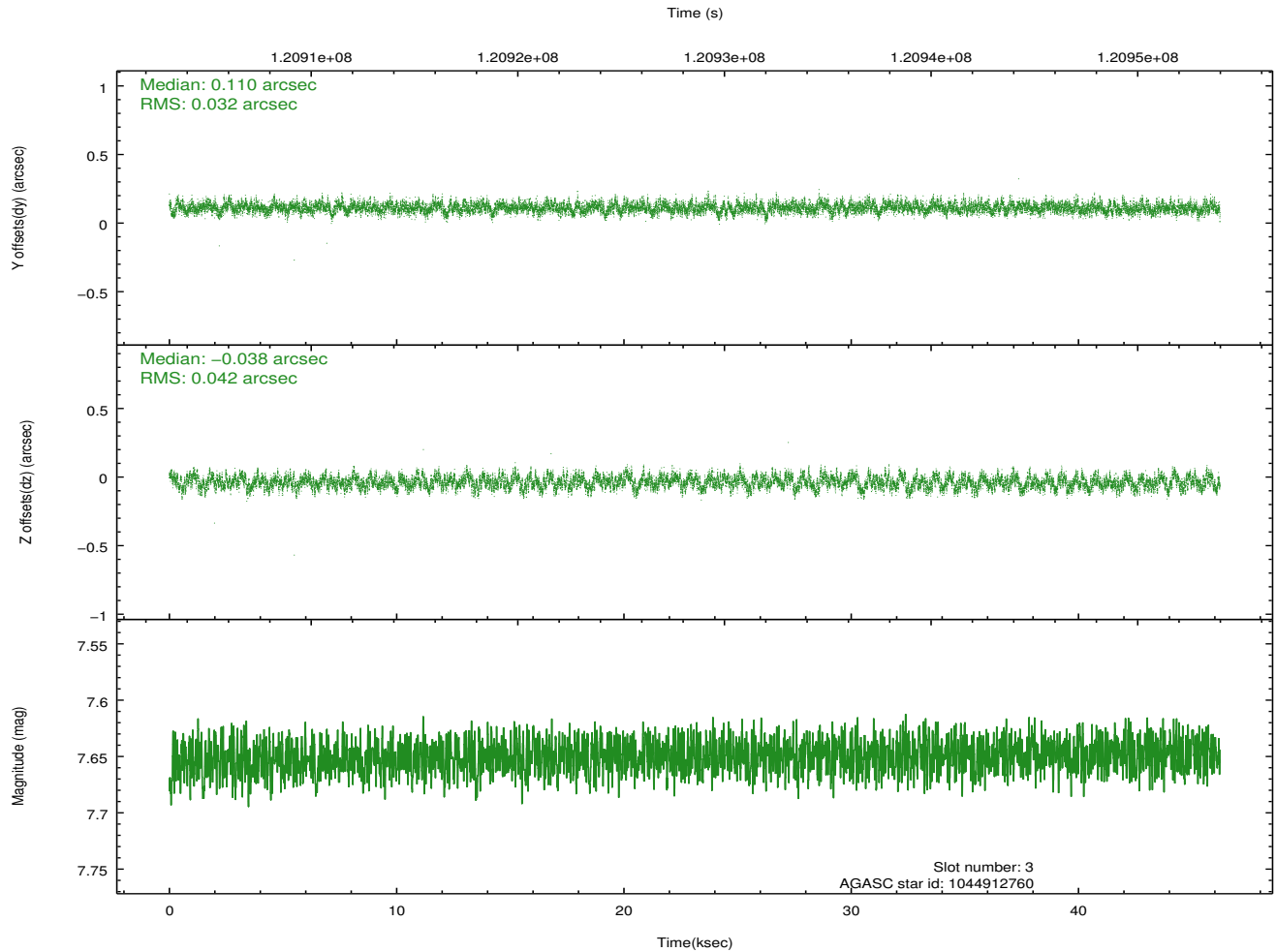
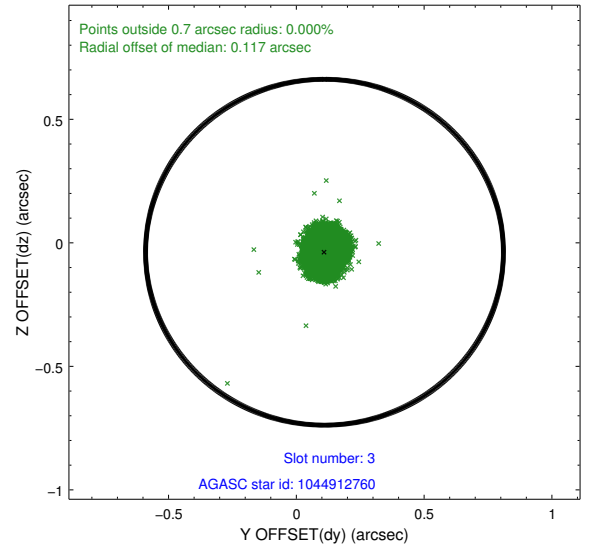
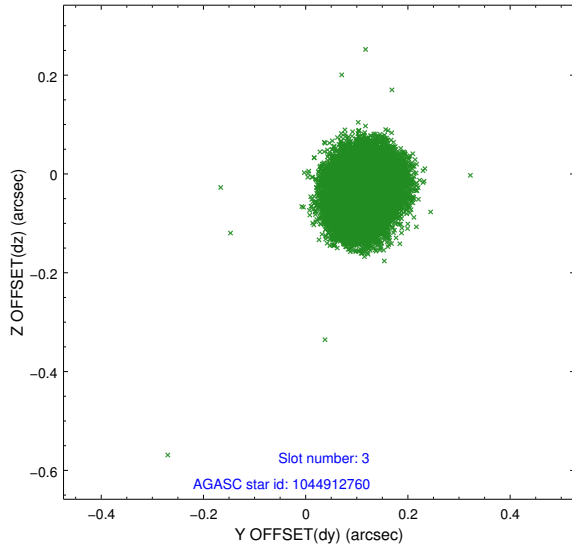


Slot Statistics

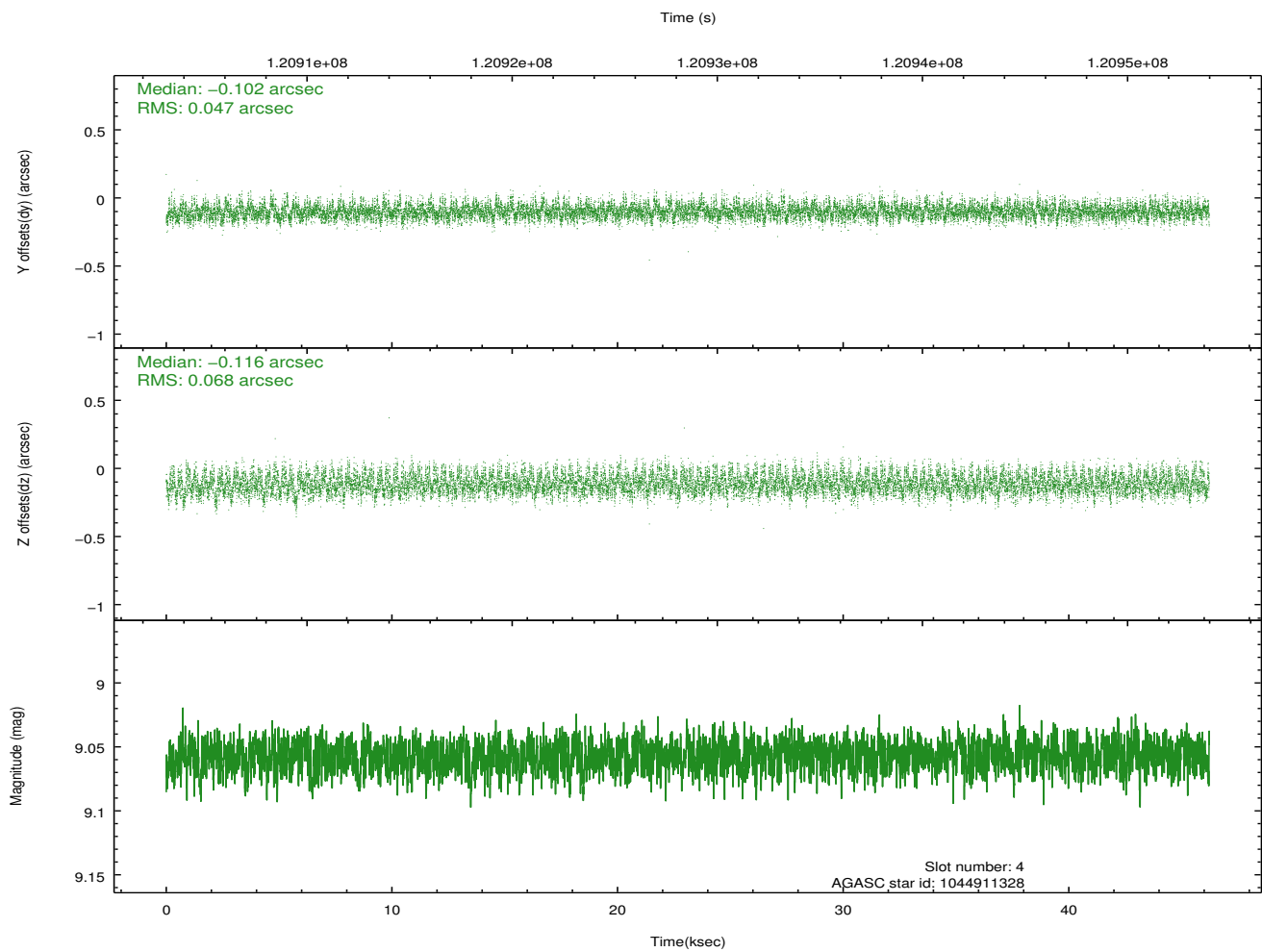
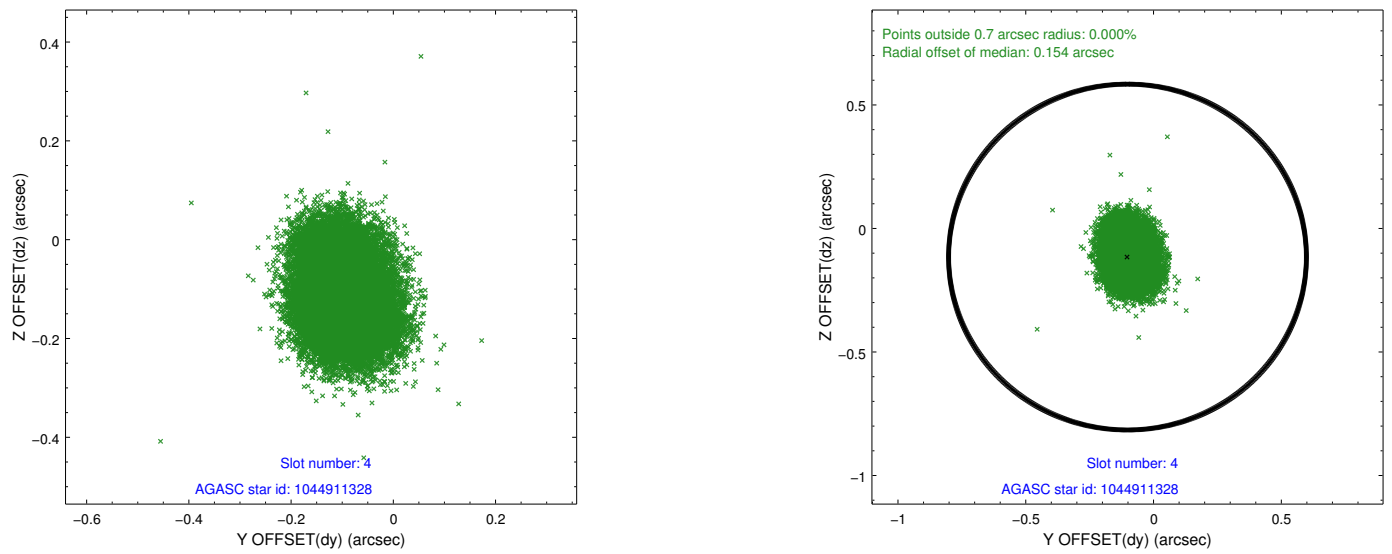
slot	status	id	mag	n_pts	med_dy	med_dz	dr1	dr2	ra	dec	mean_y	mean_z
0	FID	ACIS-S-1	7.20	11275	0.031	-0.012	0.013	0.031	0.000000	0.000000	939.57	-1724.84
1	FID	ACIS-S-5	7.24	11275	-0.035	0.034	0.011	0.019	0.000000	0.000000	-1809.44	172.85
2	FID	ACIS-S-6	7.36	11274	-0.015	-0.009	0.014	0.034	0.000000	0.000000	405.15	816.70
3	GUIDE	1044912760	7.65	22550	0.110	-0.038	0.057	0.090	314.991148	-43.015476	1665.67	377.39
4	GUIDE	1044911328	9.06	22544	-0.102	-0.116	0.088	0.142	313.755575	-42.864997	-241.78	-2316.80
5	GUIDE	1045041040	9.61	22529	-0.064	0.217	0.117	0.187	315.481975	-42.675498	1146.40	2082.53
6	GUIDE	1044912808	9.95	22483	0.058	-0.065	0.111	0.184	314.828933	-42.886568	1060.58	199.04
7	OMITTED		0.00	0	0.000	0.000	0.000	0.000	0.000000	0.000000	0.00	0.00

2.4 Star Slots

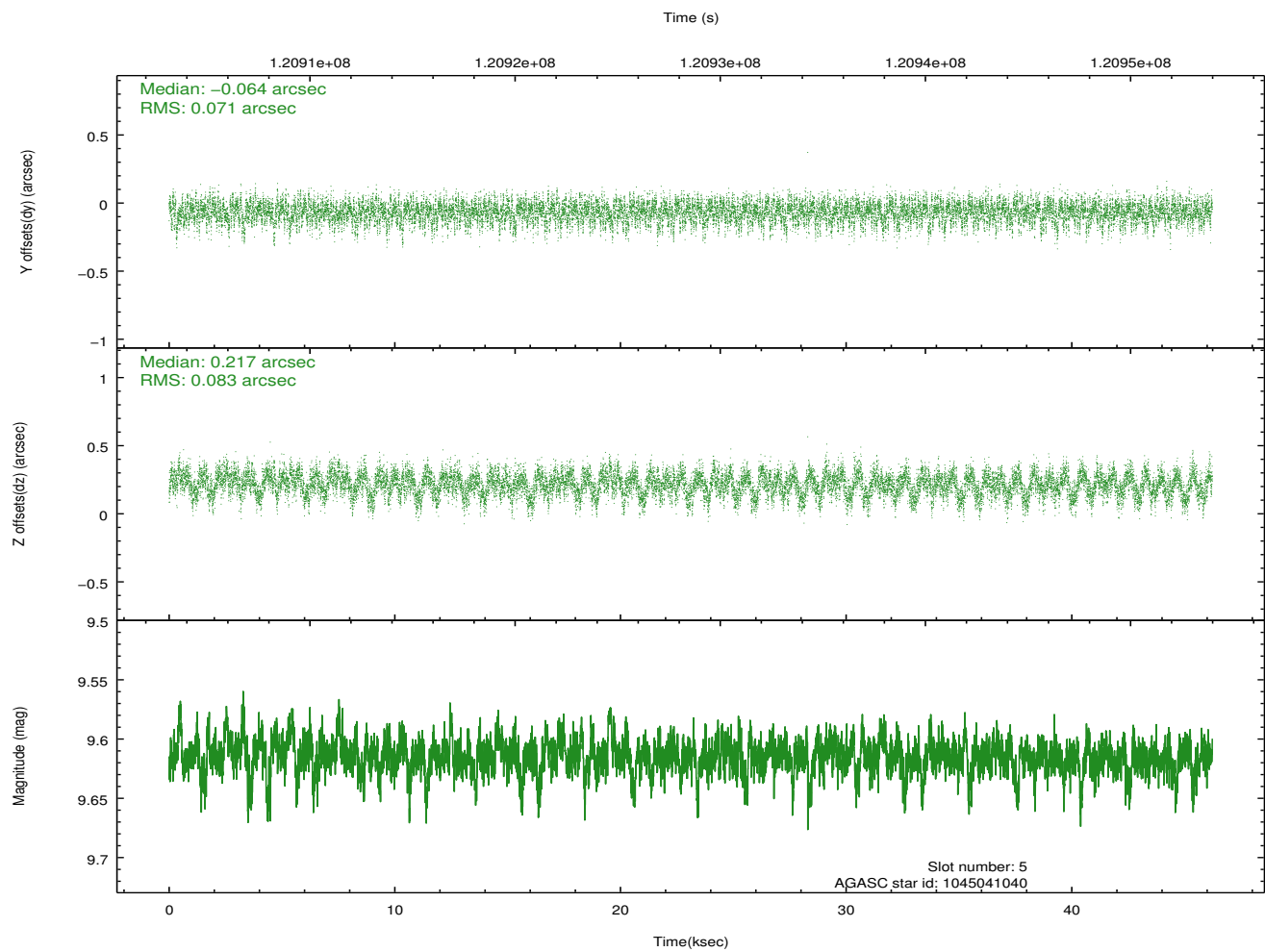
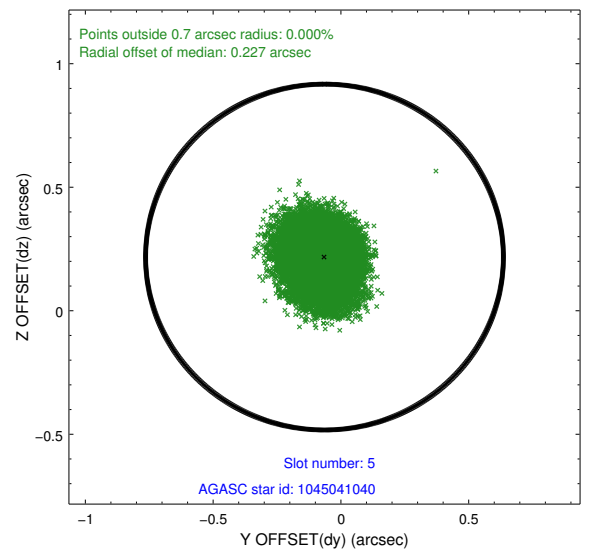
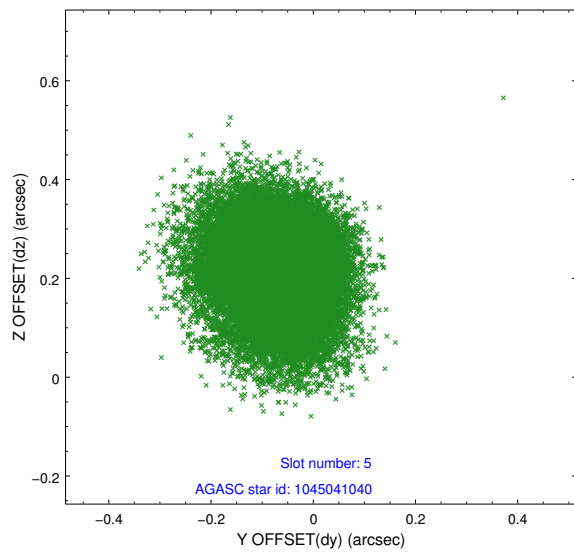
2.4.1 Slot 3



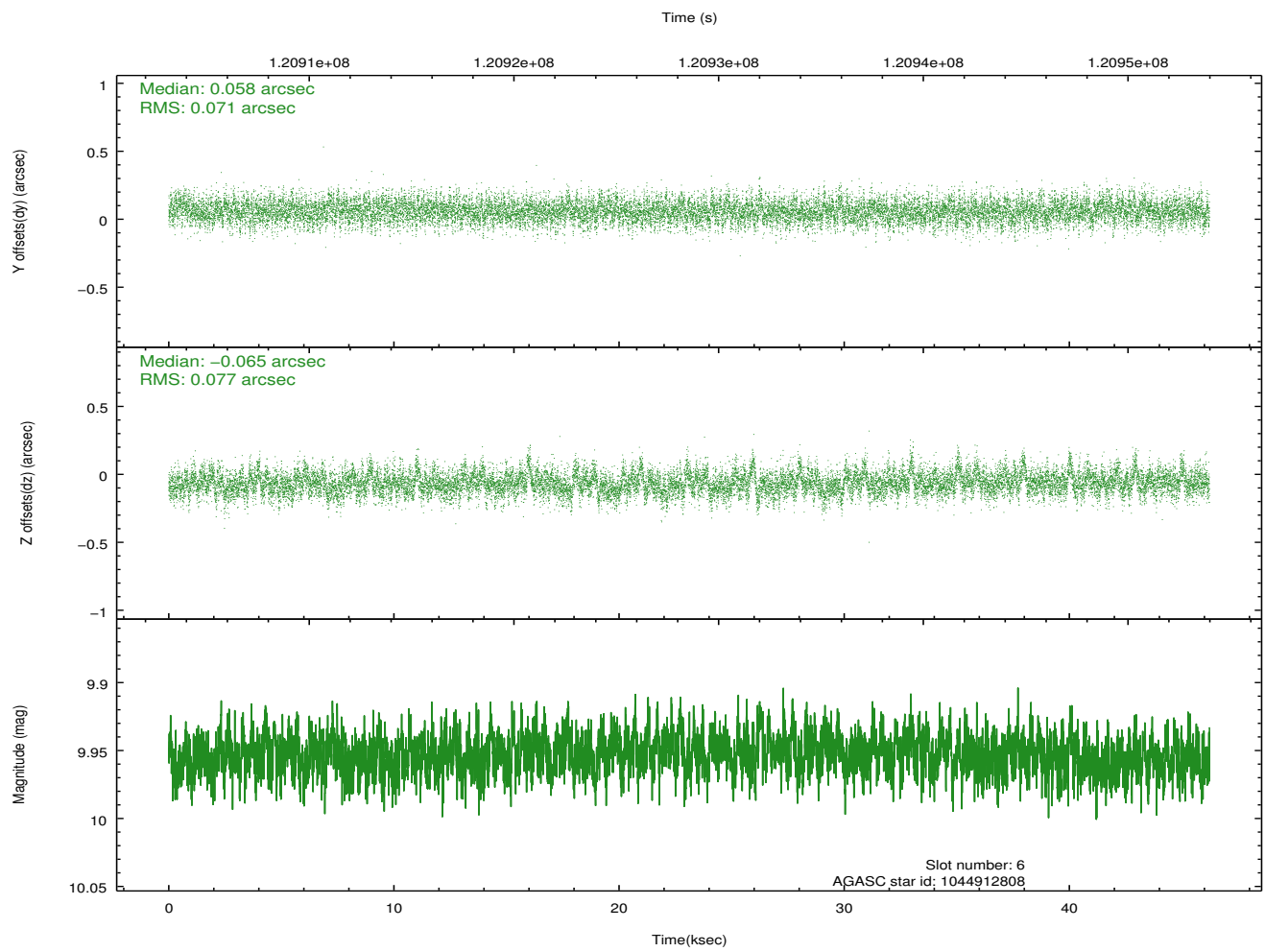
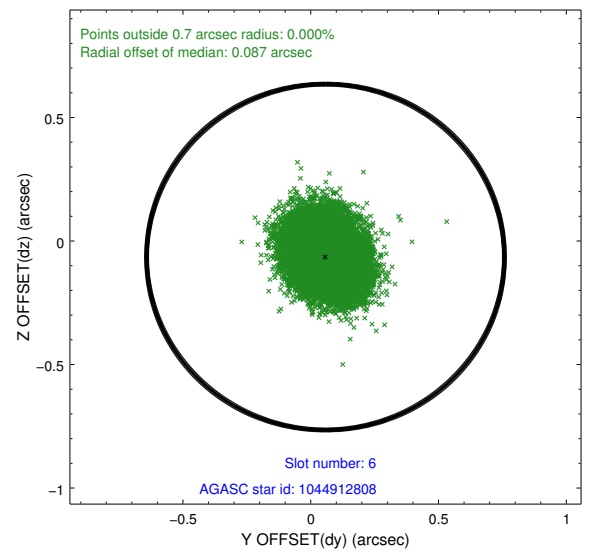
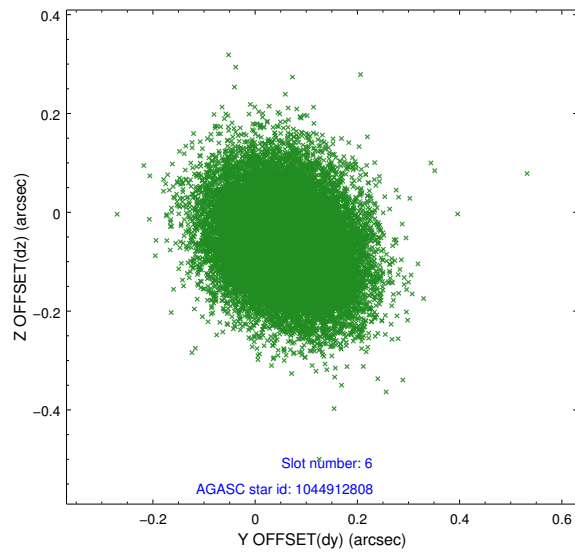
2.4.2 Slot 4



2.4.3 Slot 5

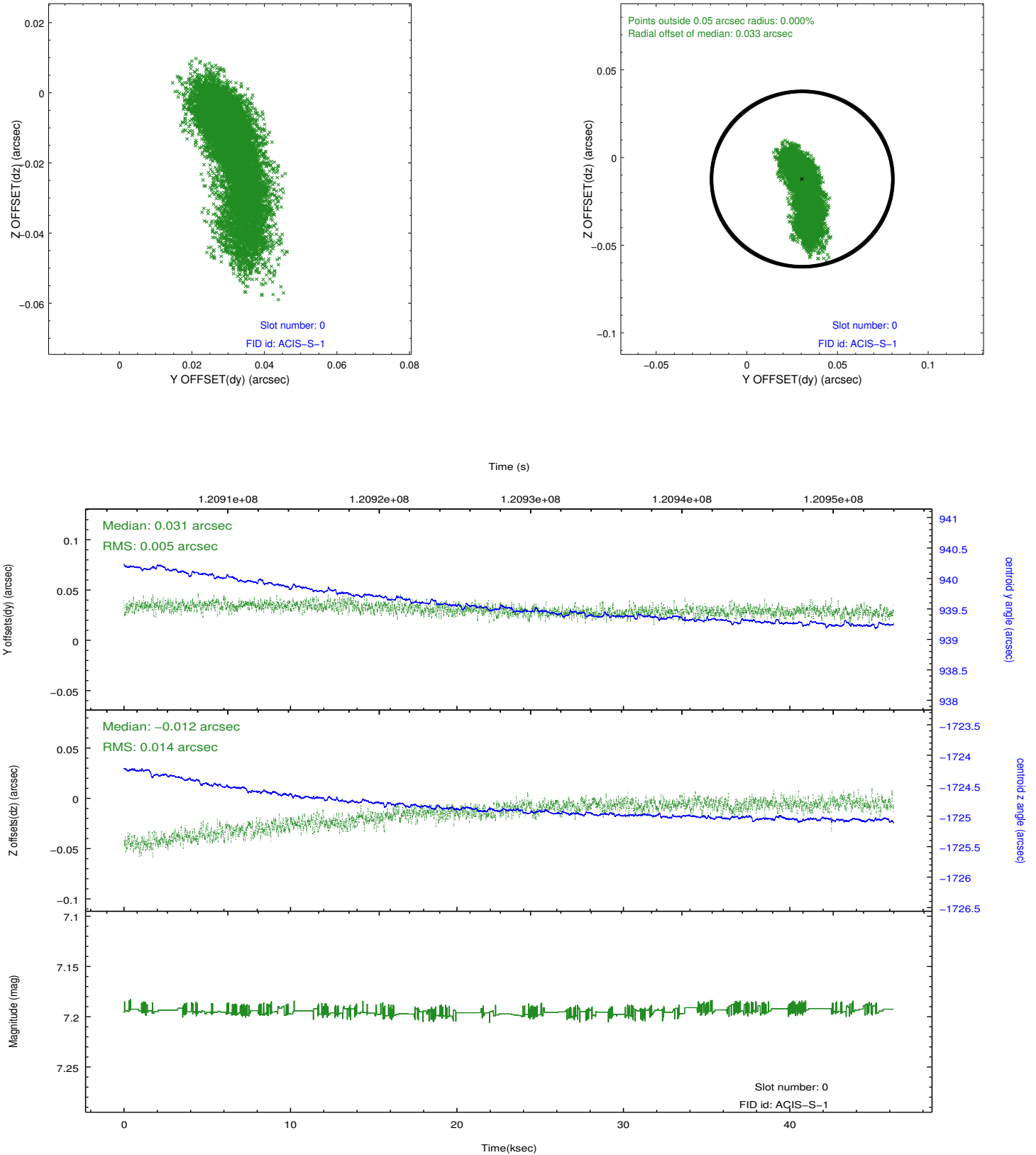


2.4.4 Slot 6

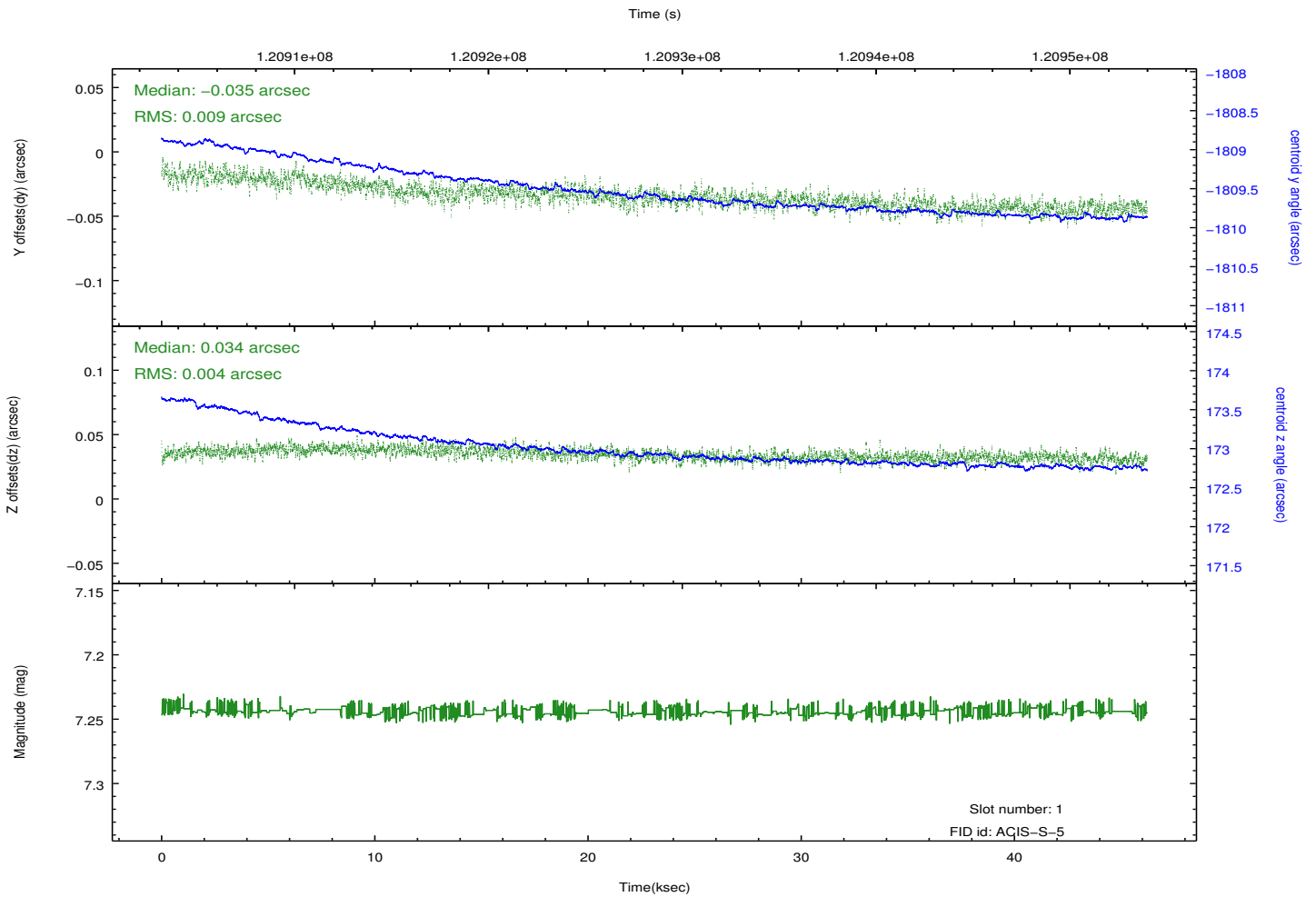
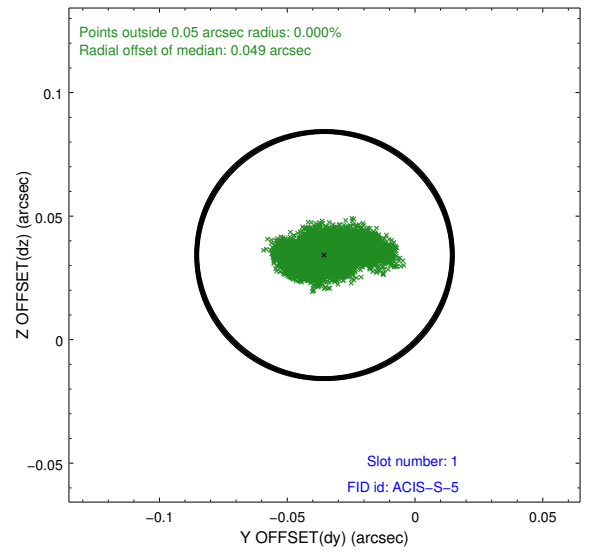
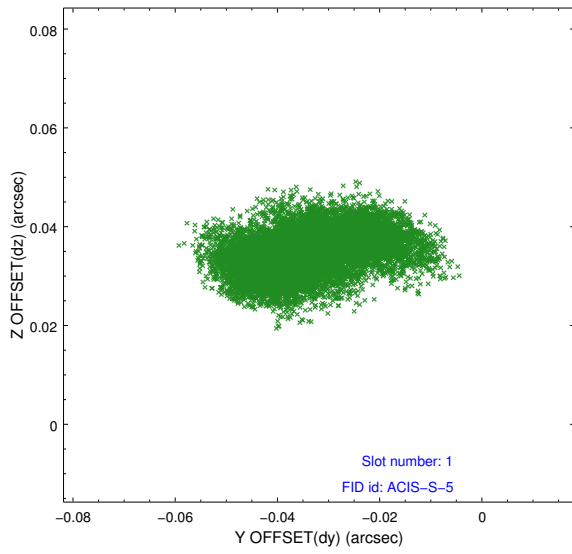


2.5 FID Slots

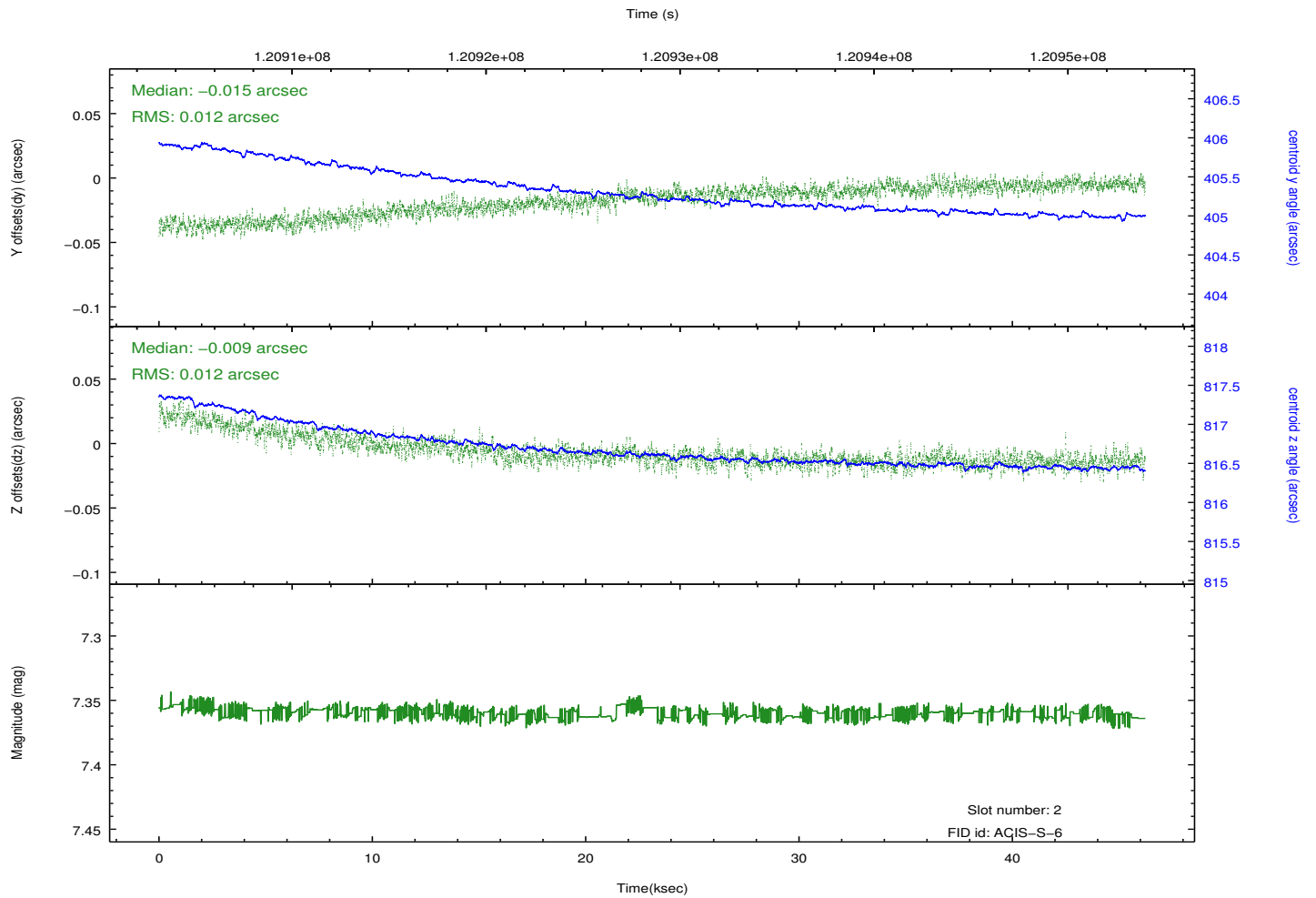
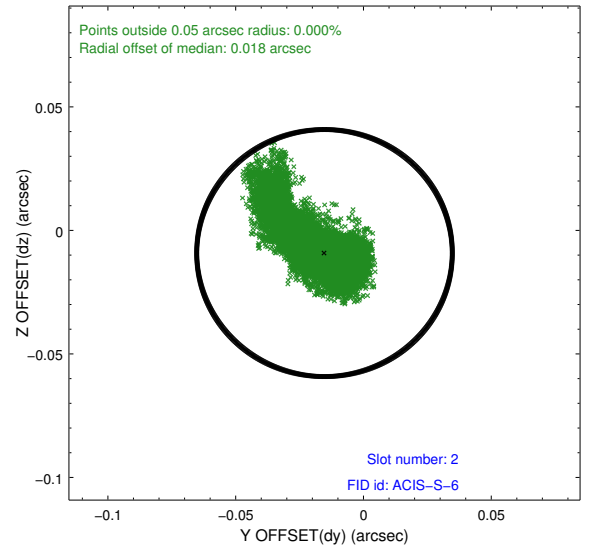
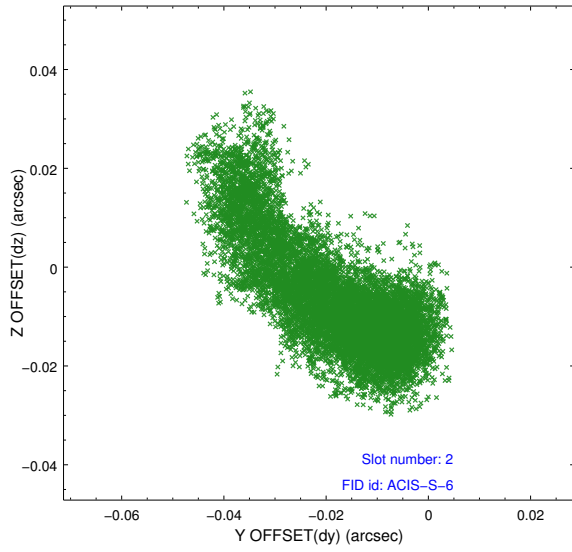
2.5.1 Slot 0



2.5.2 Slot 1



2.5.3 Slot 2



A Summary

A.1 Status

V&V Scientist	Beth Sundheim
V&V Date (YYYY-MM-DD)	2012.09.27
V&V Edition	1
V&V Disposition and Status	OK
V&V Charge Time	45.443

A.2 Comments

The guide star in slot 7 was removed from the aspect solution due to poor data quality. The aspect solution is improved by the removal of this star from the solution.