

# V&V Reference Report

## L2 ASCDS Version : 8.4.5

Observation 2096 - L2 Version 3  
Chandra X-Ray Center

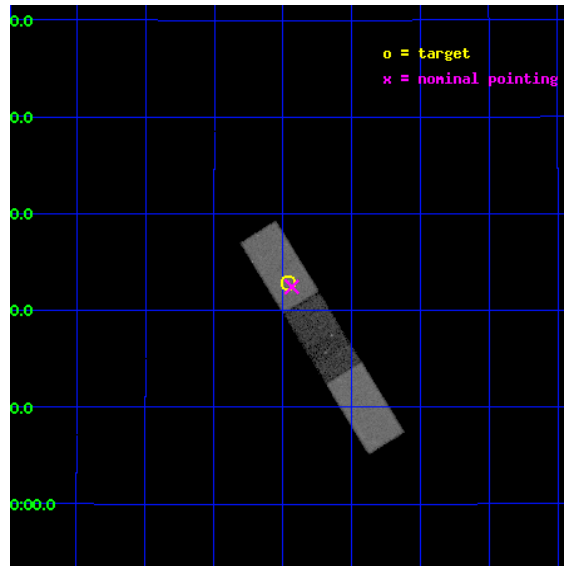
L2 Processing Date : Sep 17 2012

## Contents

<b>1</b>	<b>Front</b>	<b>2</b>
<b>2</b>	<b>OBI</b>	<b>3</b>
2.1	OBI . . . . .	3
2.1.1	Images . . . . .	3
2.1.2	Bias . . . . .	3
2.1.3	Parameters . . . . .	4
2.1.4	Events . . . . .	4
2.2	Compared Parameters . . . . .	5
2.3	Aspect . . . . .	6
2.4	Star Slots . . . . .	9
2.4.1	Slot 3 . . . . .	9
2.4.2	Slot 4 . . . . .	10
2.4.3	Slot 5 . . . . .	11
2.4.4	Slot 6 . . . . .	12
2.4.5	Slot 7 . . . . .	13
2.5	FID Slots . . . . .	14
2.5.1	Slot 0 . . . . .	14
2.5.2	Slot 1 . . . . .	15
2.5.3	Slot 2 . . . . .	16
<b>A</b>	<b>Summary</b>	<b>17</b>
A.1	Status . . . . .	17
A.2	Comments . . . . .	17

# 1 Front

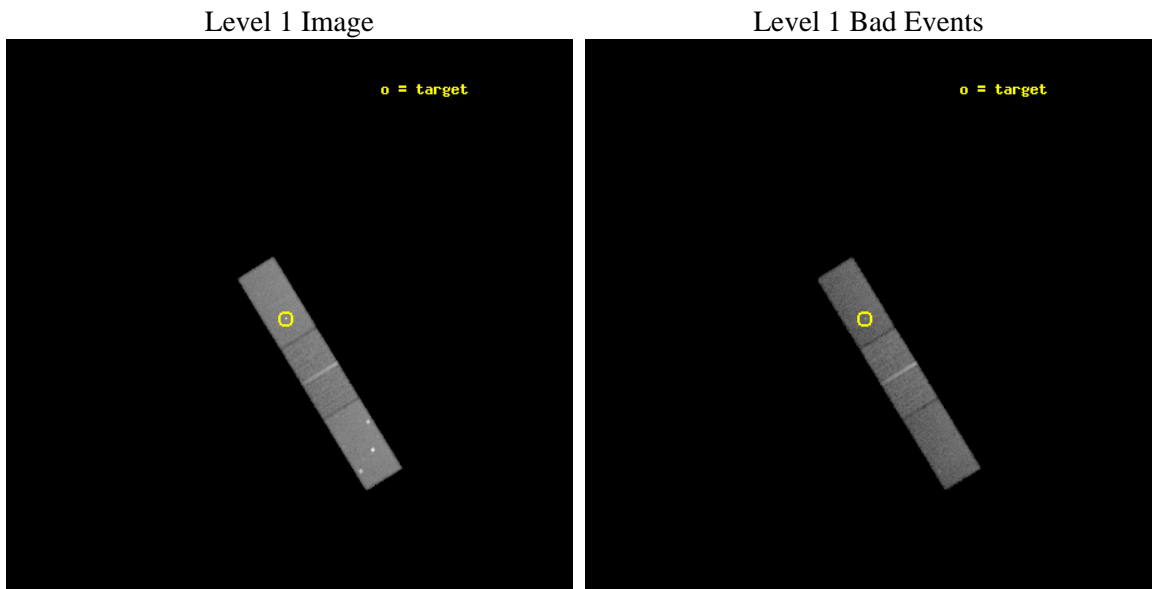
seq_num	700286	Sequence number
obs_id	2096	Observation id
title	X-RAY STRUCTURES IN AND AROUND POWERFUL RADIO SOURCES	Proposal tit
observer	Prof Diana Worrall	Principal investigator
object	3C 275.1	Source name
dtycycle	0	&#160
cycle	P	events from which exps? Prim/Second/Both
ra_targ	190.990417	Observer's specified target RA [deg]
dec_targ	16.381444	Observer's specified target Dec [deg]
ra_nom	190.98362217797	Nominal RA [deg]
dec_nom	16.374175385091	Nominal Dec [deg]
roll_nom	238.37235834686	Nominal Roll [deg]
revision	3	Processing version of data
ontime	25398.317905113	Sum of GTIs [s]
livetime	24763.143279982	Livetime [s]
ontime5	25398.317905113	Sum of GTIs [s]
ontime6	25396.67691496	Sum of GTIs [s]
ontime7	25398.317905113	Sum of GTIs [s]
l2events	109238	Number of level 2 events



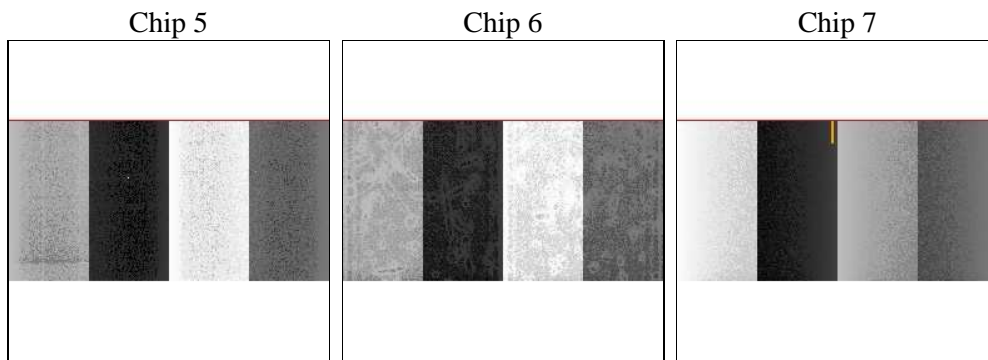
## 2 OBI

### 2.1 OBI

#### 2.1.1 Images



#### 2.1.2 Bias



### 2.1.3 Parameters

obi_num	0	Obi number	sched_exp_time	25000.000000	[s] Scheduled observation exposure time
ascdsver	8.4.5	Processing system revision	ontime	25398.317905113	Sum of GTIs [s]
caldbver	4.5.1.1	&#160	ontime5	25398.317905113	Sum of GTIs [s]
date	2012-09-17T17:51:38	Date and time of file creation	ontime6	25396.67691496	Sum of GTIs [s]
revision	3	Processing version of data	ontime7	25398.317905113	Sum of GTIs [s]
			l1events	338393	Number of level 1 events

### 2.1.4 Events

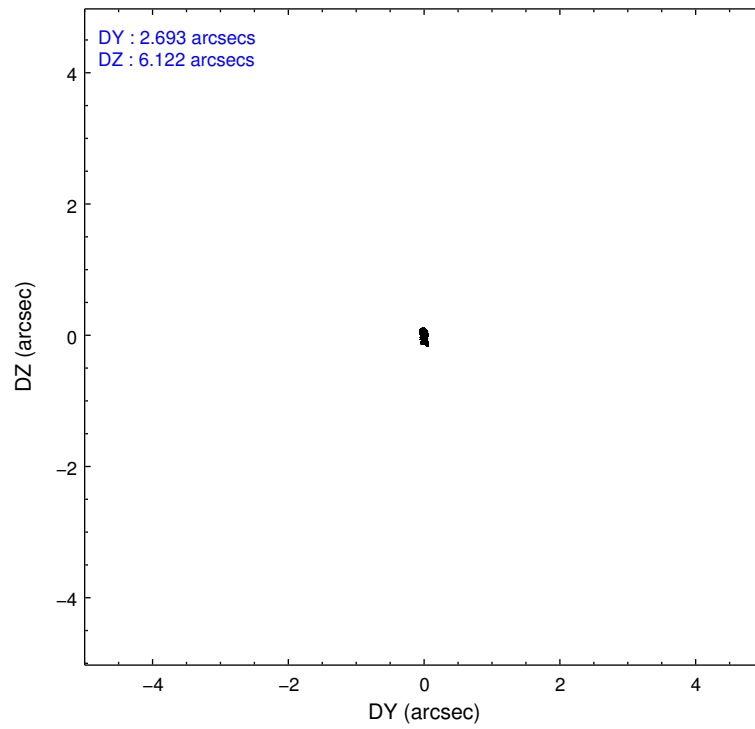
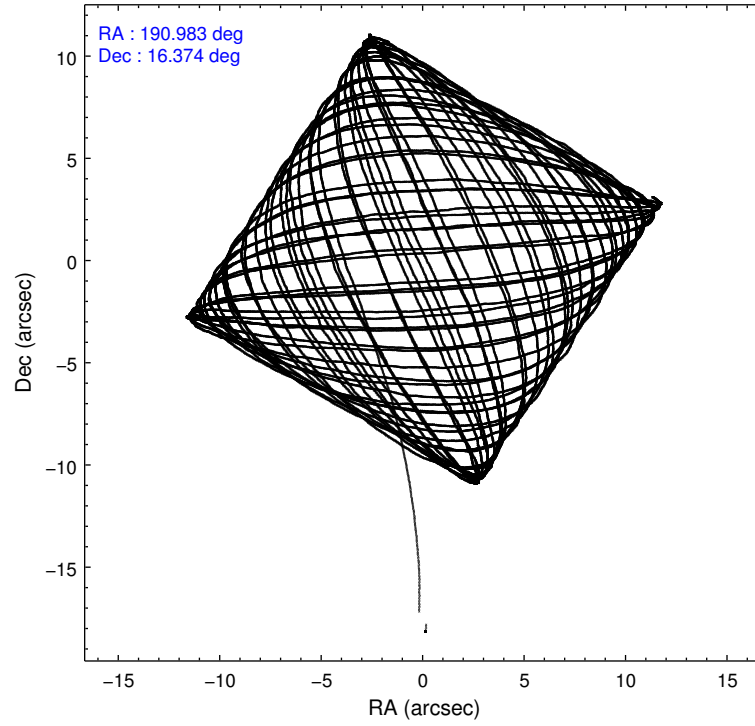
	ccd 5	ccd 6	ccd 7
level 1 events	132944	92878	112571
rejected events	63116	82605	61468
rejected %	47%	88%	54%

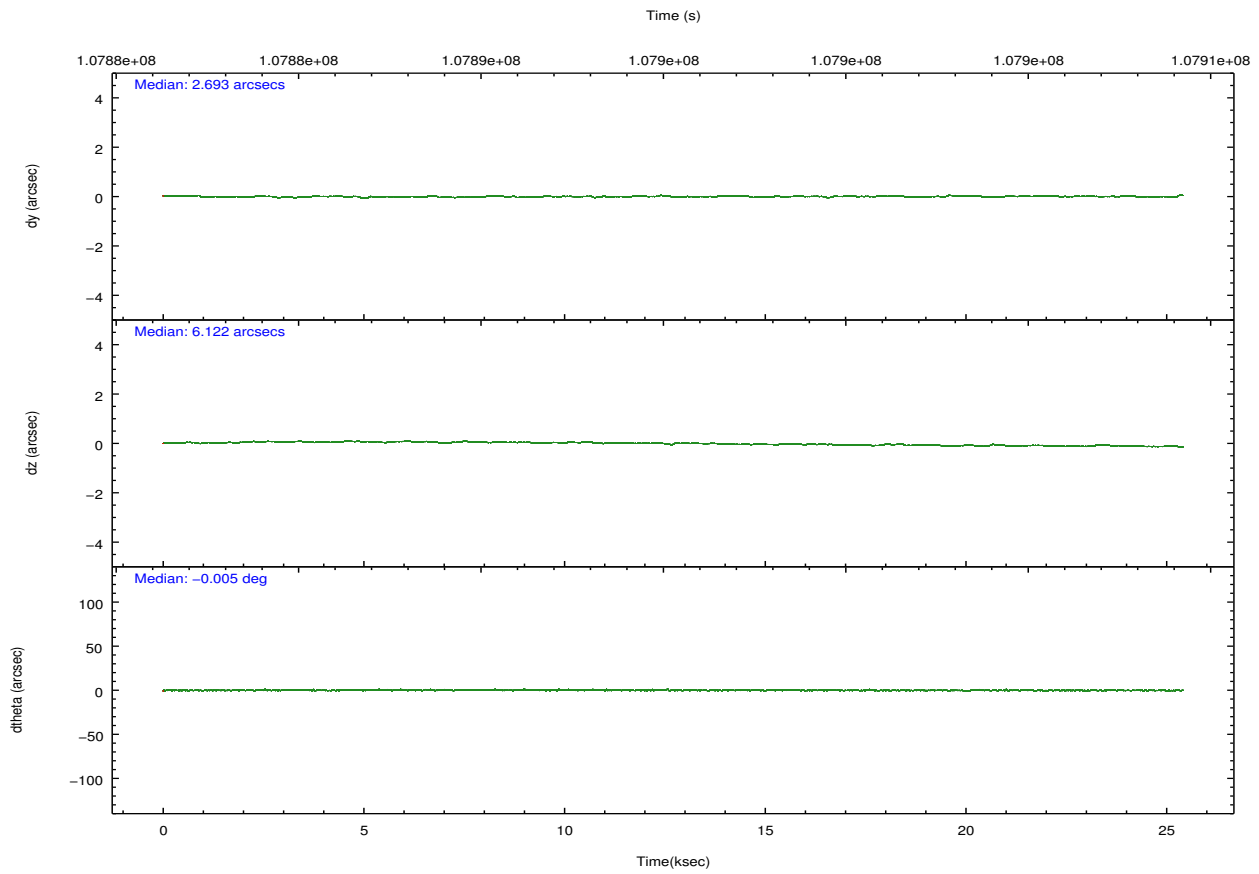
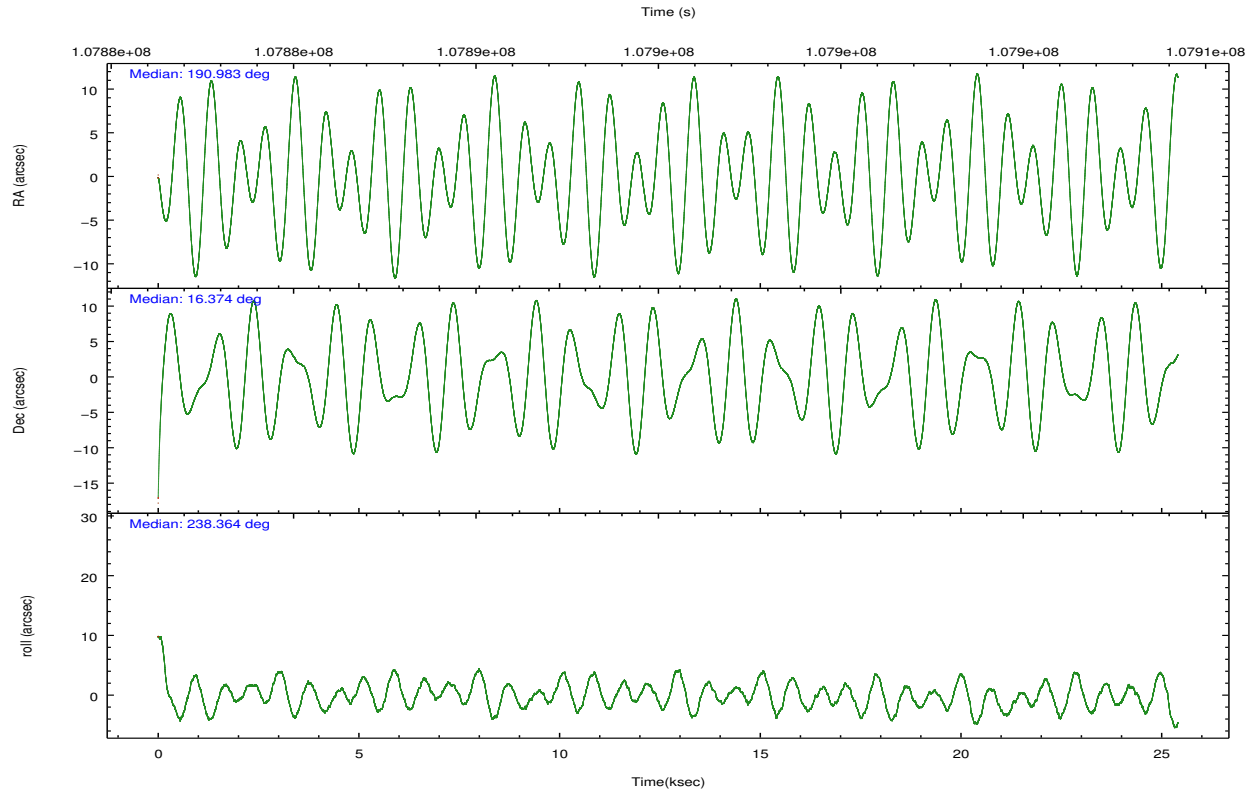
	ccd 5	ccd 6	ccd 7
grade 0 events	22205	3959	6342
	16%	4%	5%
grade 1 events	258	35	139
	0%	0%	0%
grade 2 events	15629	1932	10693
	11%	2%	9%
grade 3 events	2973	1275	5231
	2%	1%	4%
grade 4 events	2877	1284	5119
	2%	1%	4%
grade 5 events	9298	3491	10325
	6%	3%	9%
grade 6 events	26751	1893	24099
	20%	2%	21%
grade 7 events	52953	79009	50623
	39%	85%	44%

## 2.2 Compared Parameters

Parameter	Planned	Actual	Parameter	Planned	Actual
Instrument	ACIS	ACIS	Obspar format version number	7	7
Detector	ACIS-567	ACIS-567	Obspar file type	PREDICTED	ACTUAL
Grating	NONE	NONE	Obspar update status	NONE	UPDATED
Data mode	FAINT	FAINT	Number of optional ACIS chips dropped	0	0
Observation mode	POINTING	POINTING	On-chip summing requested	N	N
[deg] Pointing RA	190.984126	190.9836221779715	Subarray requested	CUSTOM	1/2
[deg] Pointing Dec	16.401453	16.37417538509058	Subarray start row	257	257
[deg] Pointing Roll	238.215592	238.3723583468588	Subarray row count	512	512
[mm] SIM focus pos	-0.684267	-0.6828225247311905	Alternating exposures requested	N	N
[mm] SIM defocus	0	0.001444936568705701	[s] Primary exposure time	0.000000	1.6
[mm] SIM translation stage pos	-190.132523	-190.1400660498719			
[mm] SIM translation stage offset	0	0.00754346686406393			
[s] Observation start time (MET)	107882964.184000	107881890.31111			
Observation start date	2001-06-02T15:28:20	2001-06-02T15:11:30			
[s] Observation end time (MET)	107907964.184000	107908363.49964			
Observation end date	2001-06-02T22:25:00	2001-06-02T22:32:43			
Read mode	TIMED	TIMED			

## 2.3 Aspect



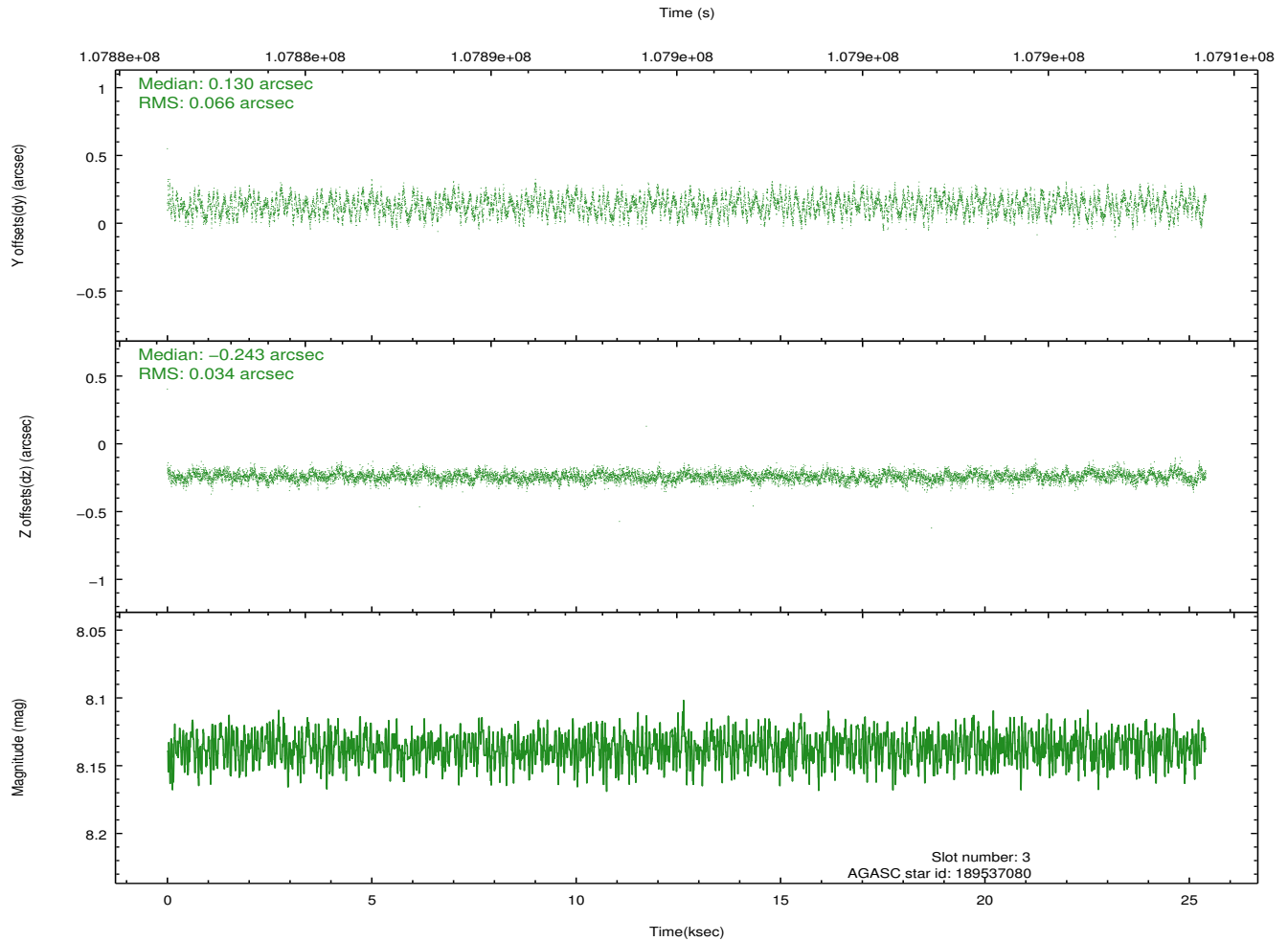
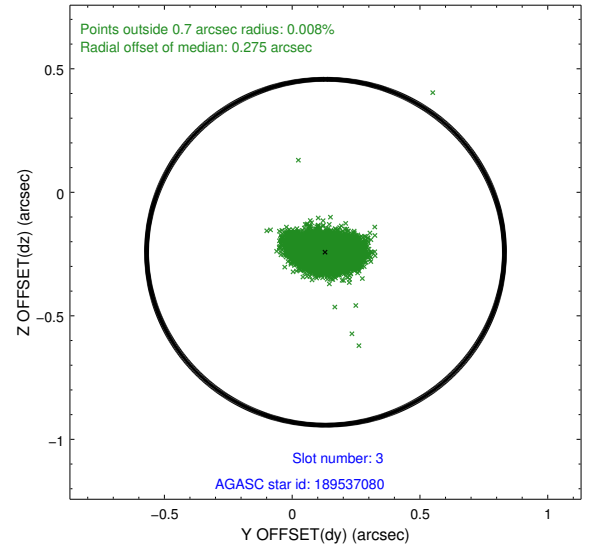
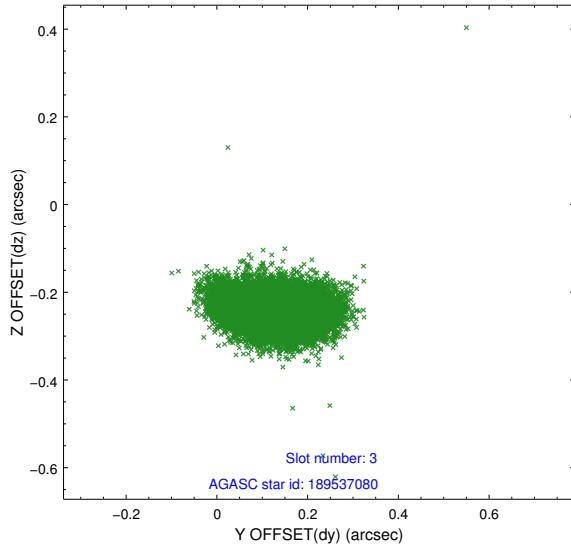


### Slot Statistics

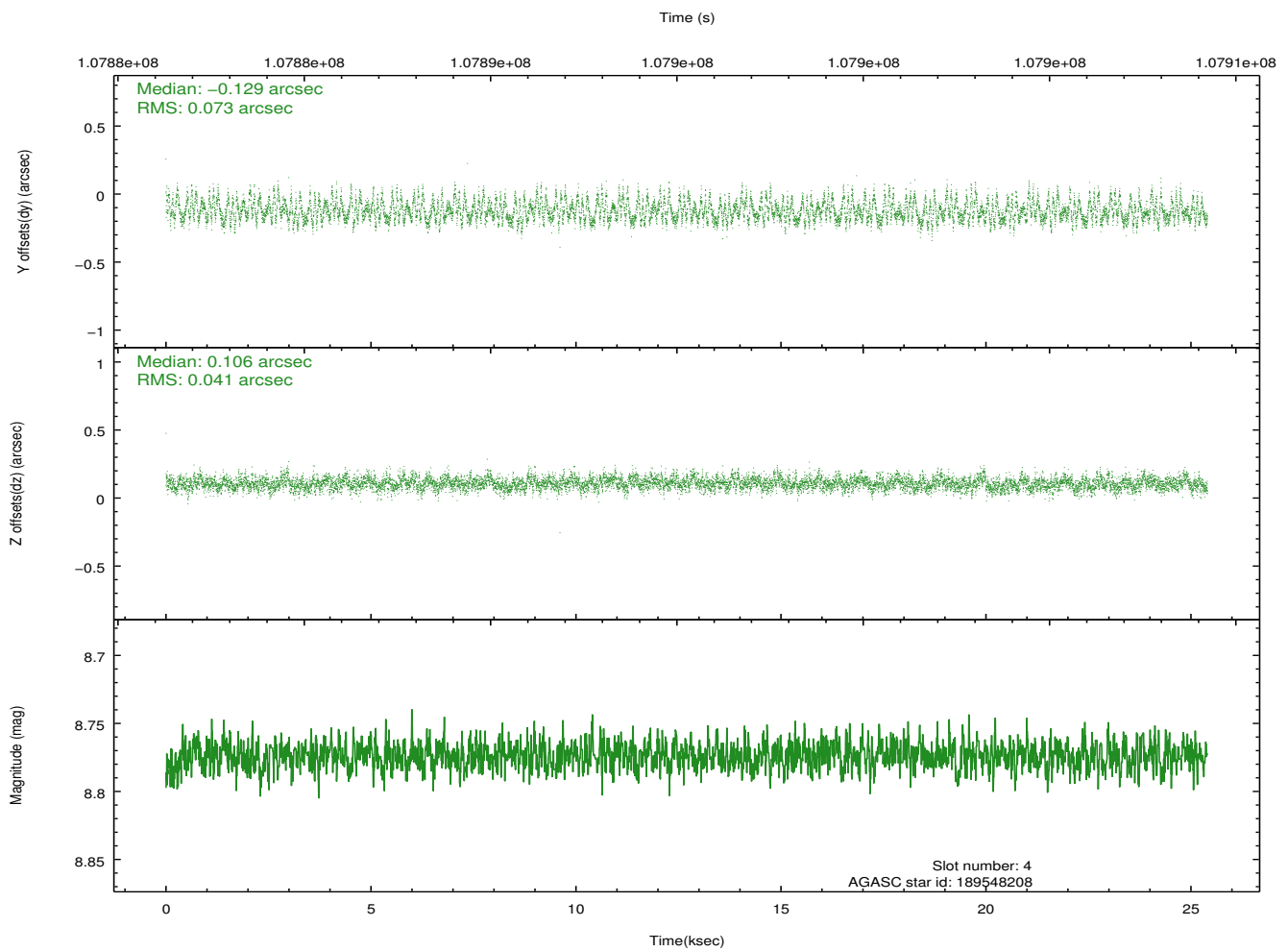
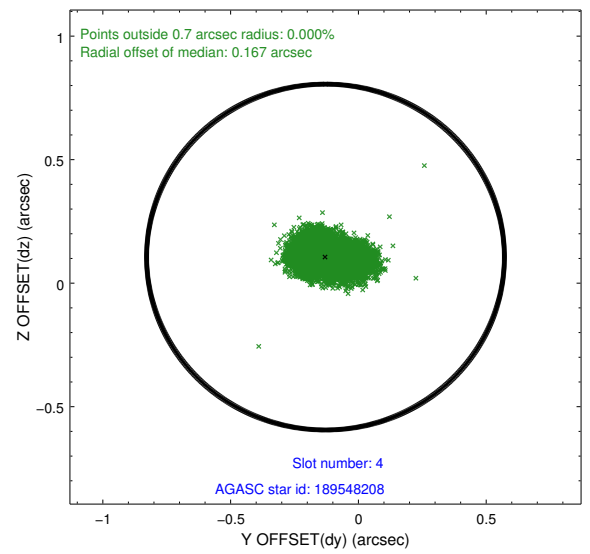
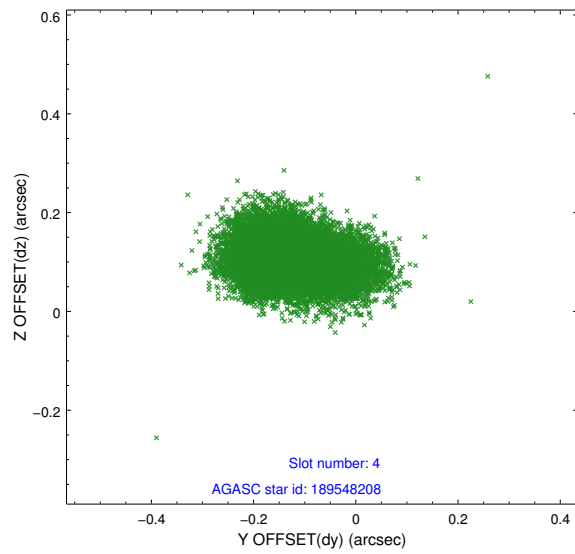
slot	status	id	mag	n_pts	med_dy	med_dz	dr1	dr2	ra	dec	mean_y	mean_z
0	FID	ACIS-S-2	7.11	6195	-0.023	0.016	0.007	0.011	0.000000	0.000000	-755.31	-1727.25
1	FID	ACIS-S-4	7.20	6195	-0.052	0.007	0.006	0.010	0.000000	0.000000	2157.85	181.17
2	FID	ACIS-S-5	7.24	6194	0.044	-0.014	0.006	0.010	0.000000	0.000000	-1807.98	174.86
3	GUIDE	189537080	8.14	12387	0.130	-0.243	0.079	0.129	190.121612	16.279339	1937.88	-2304.50
4	GUIDE	189548208	8.77	12385	-0.129	0.106	0.088	0.147	191.620676	16.521429	-1528.40	1638.87
5	GUIDE	189542152	9.12	12385	0.106	0.100	0.083	0.134	190.948751	15.714368	2166.34	1200.13
6	GUIDE	189548192	9.64	12380	-0.084	0.098	0.118	0.186	191.748178	16.492067	-1671.83	2068.36
7	GUIDE	189545696	9.97	12384	-0.026	-0.062	0.104	0.175	191.205591	16.321408	-159.63	803.01

## 2.4 Star Slots

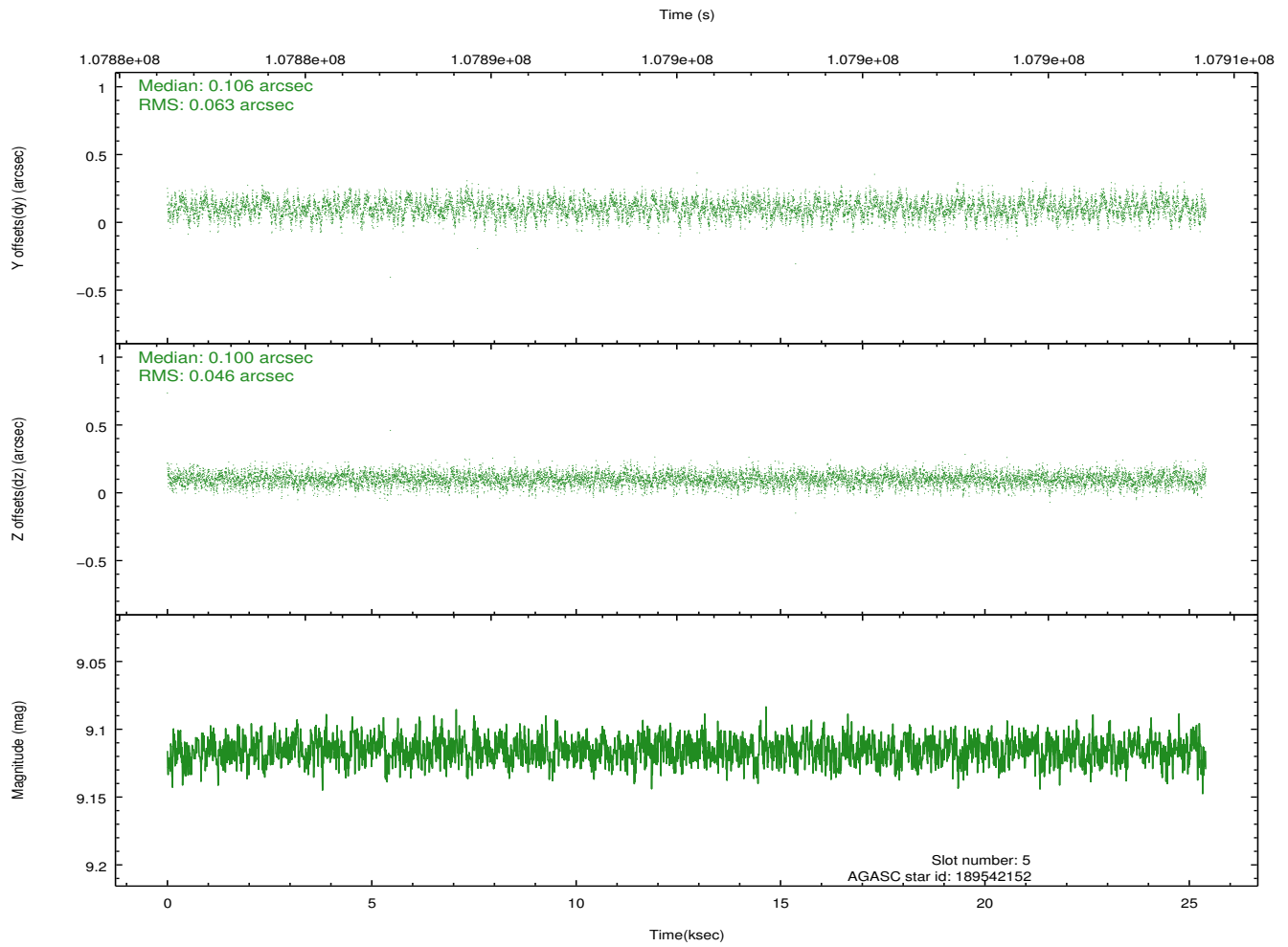
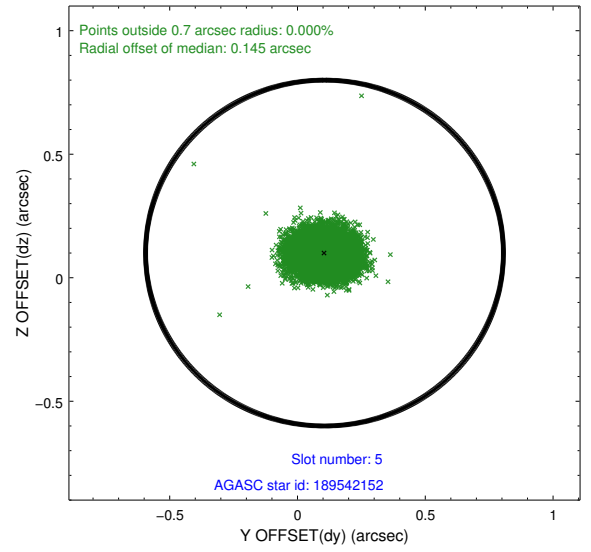
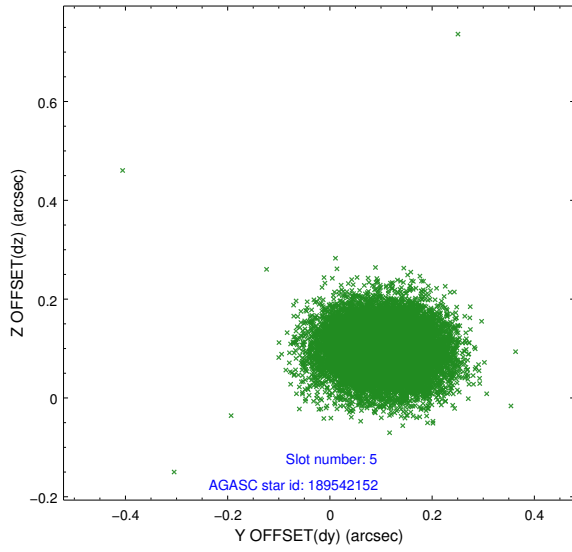
### 2.4.1 Slot 3



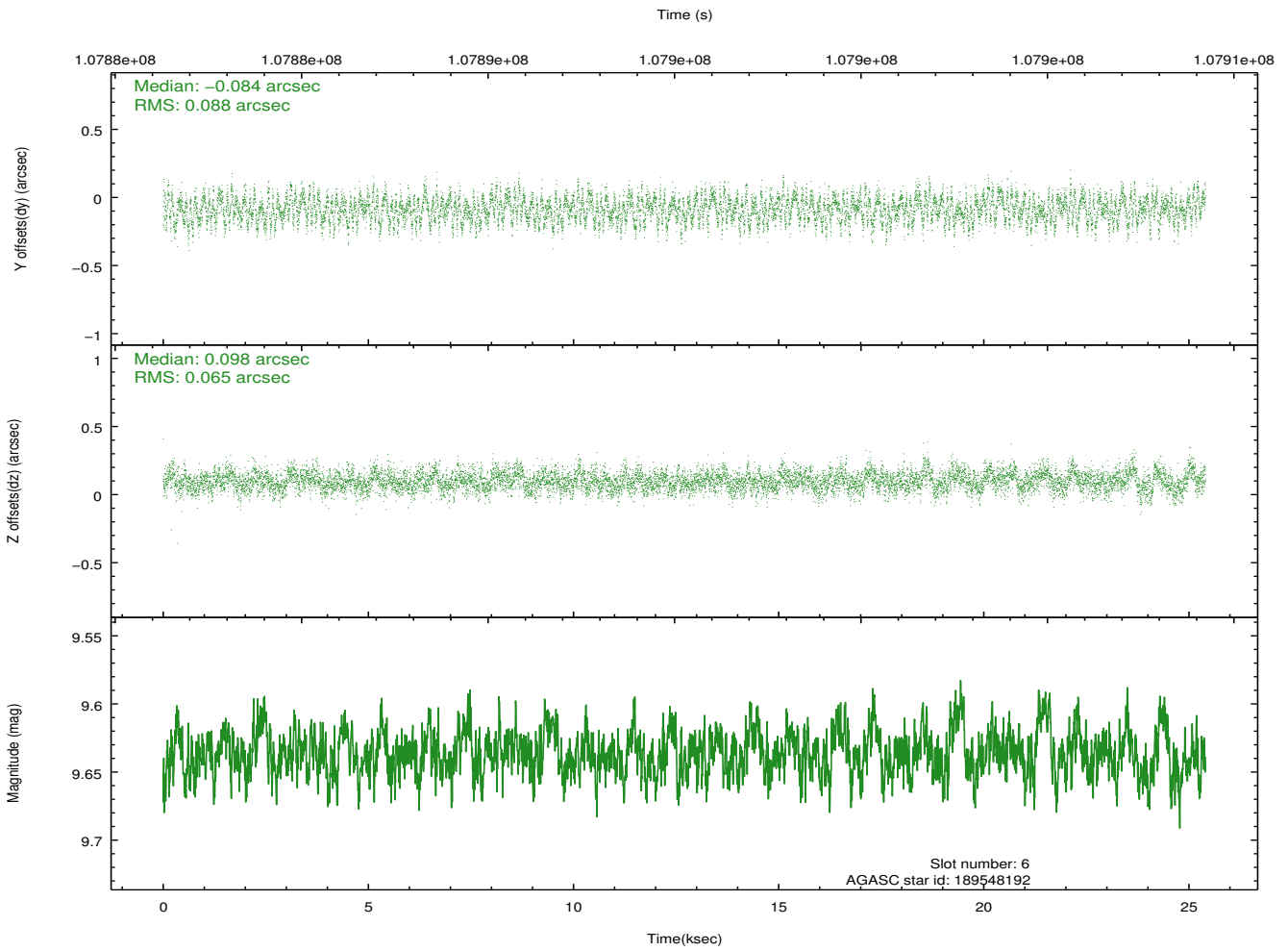
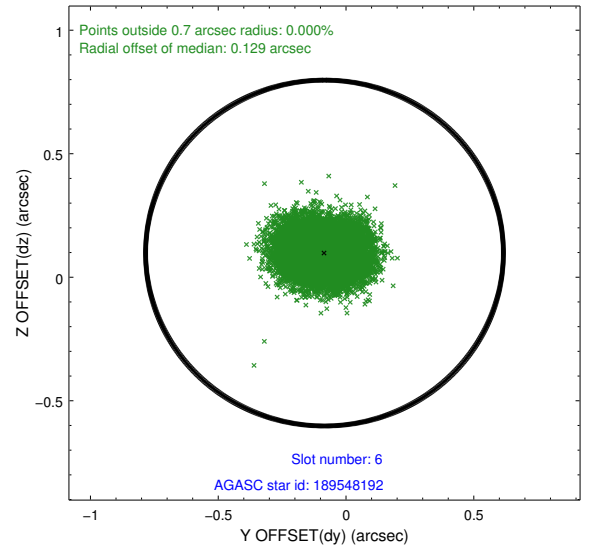
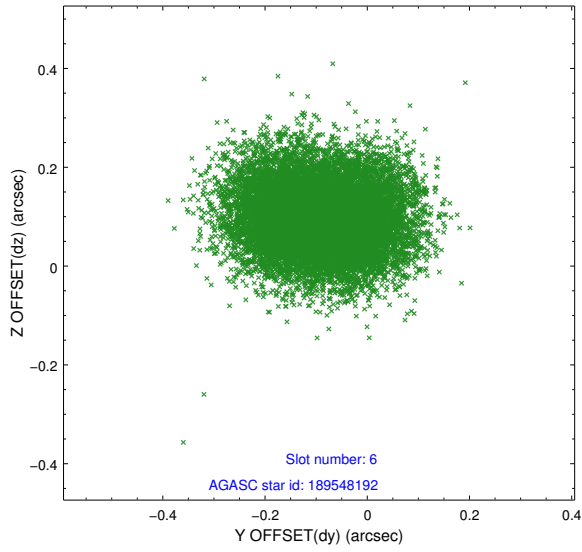
## 2.4.2 Slot 4



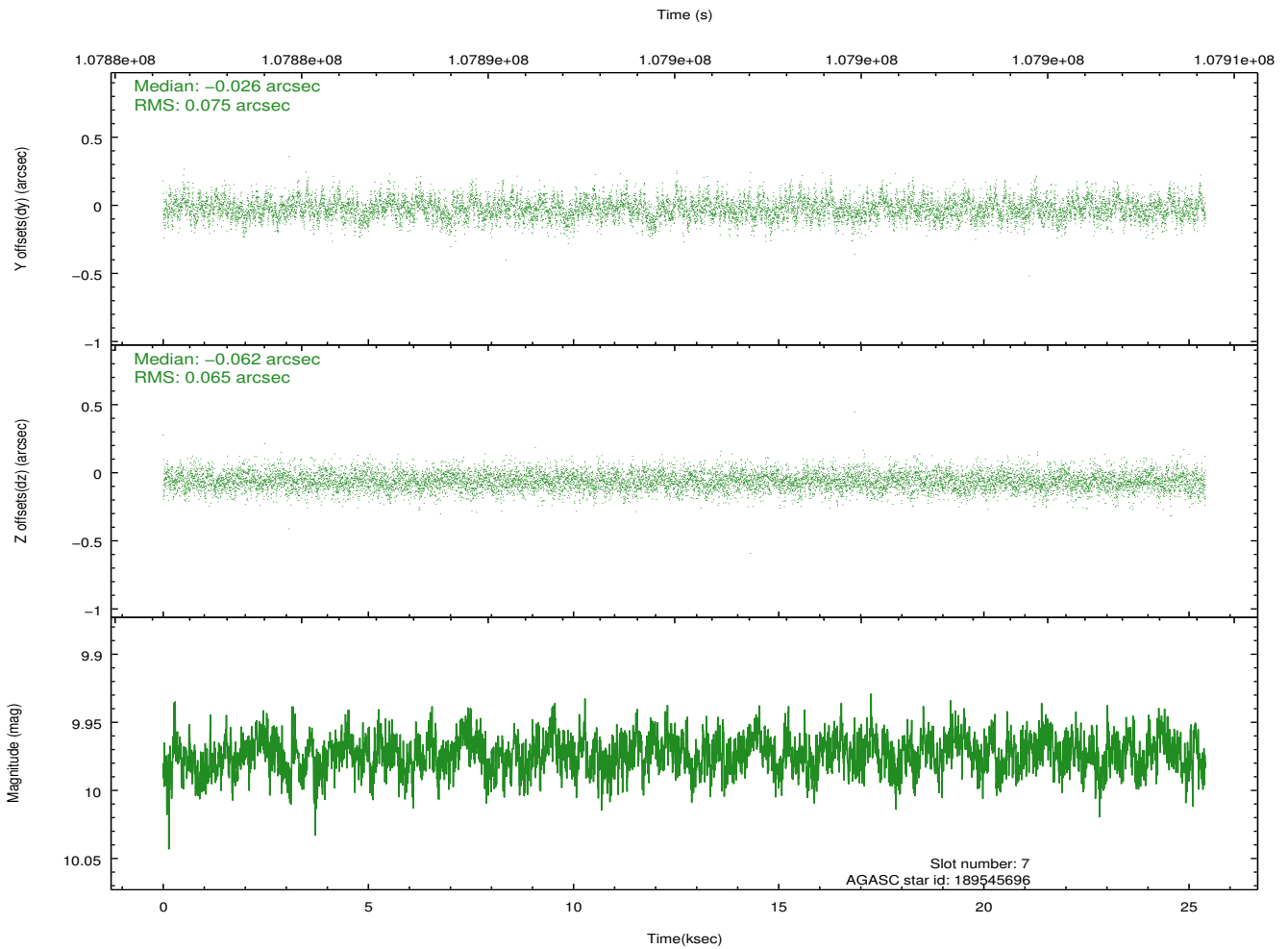
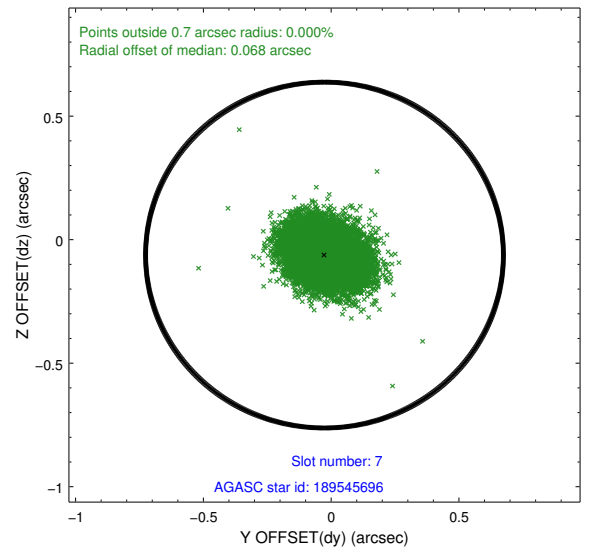
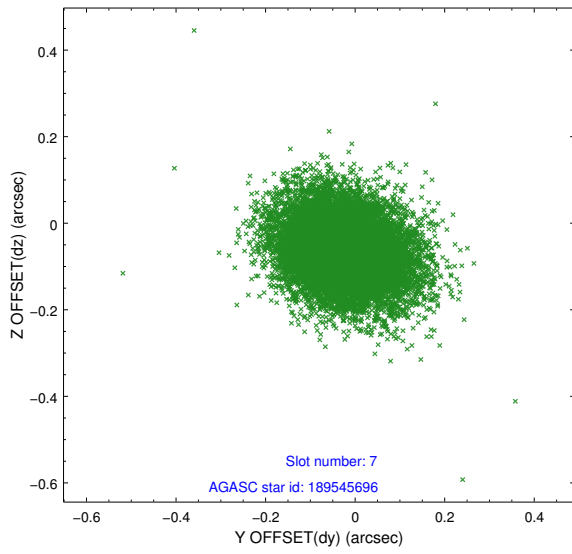
### 2.4.3 Slot 5



### 2.4.4 Slot 6

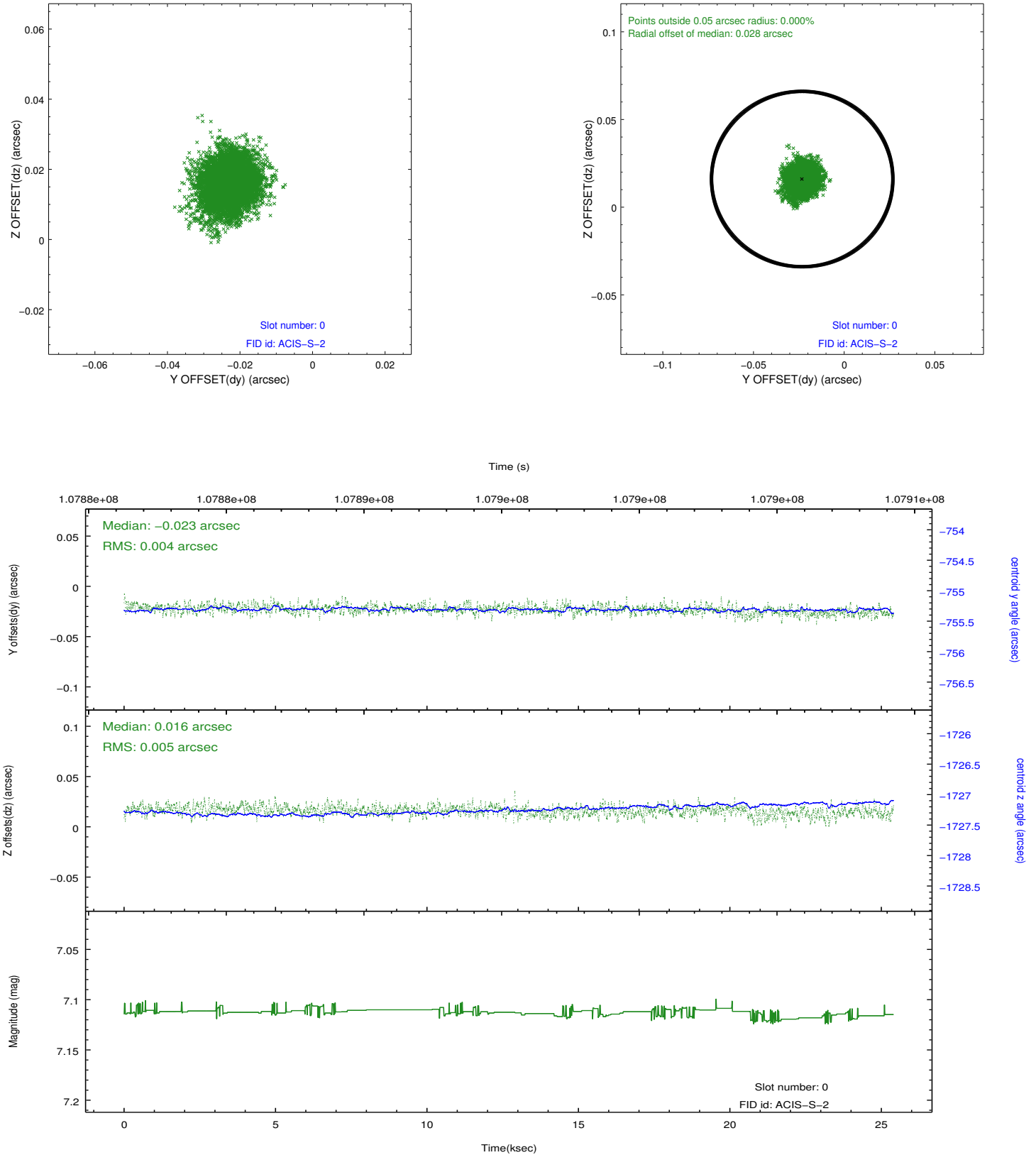


## 2.4.5 Slot 7

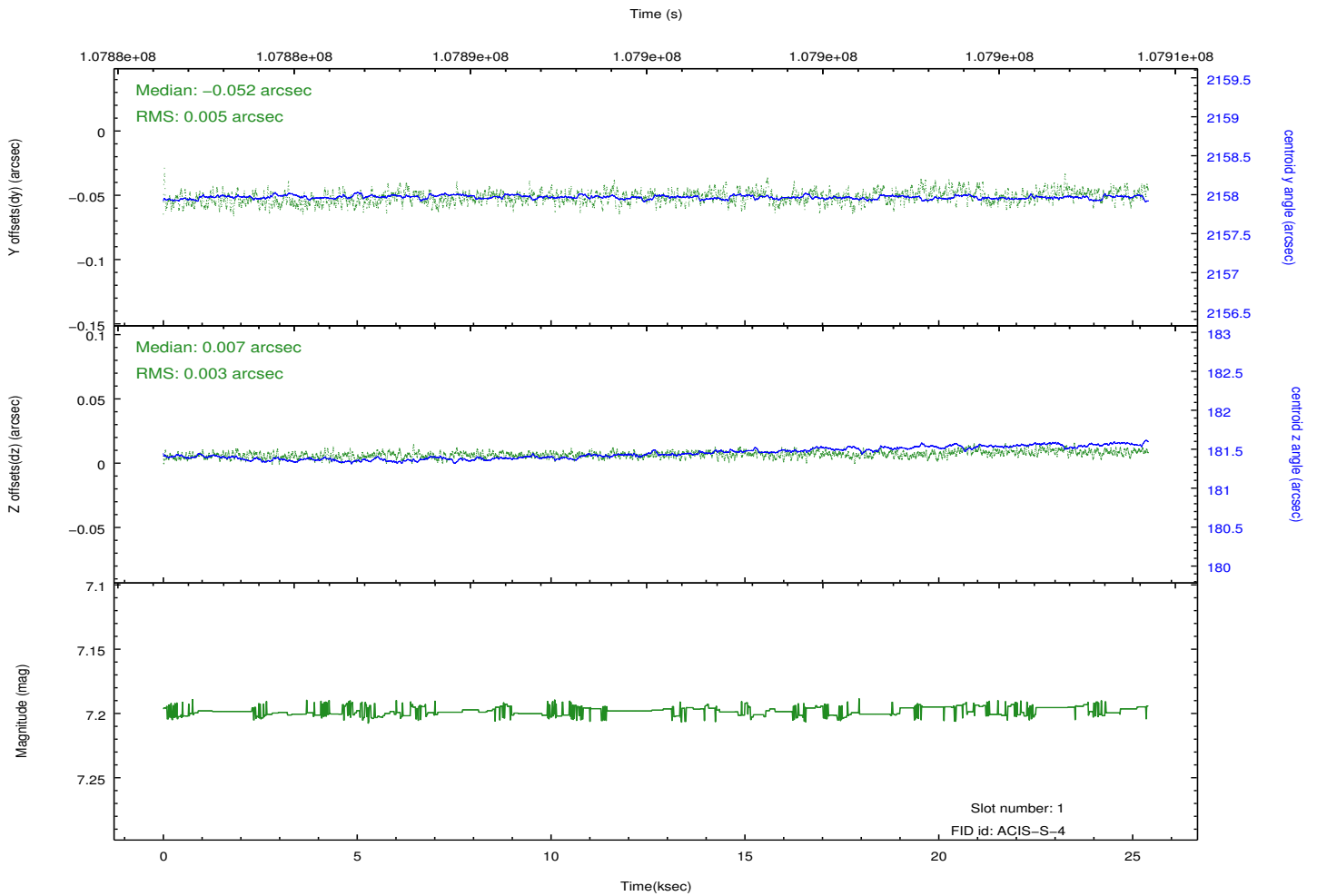
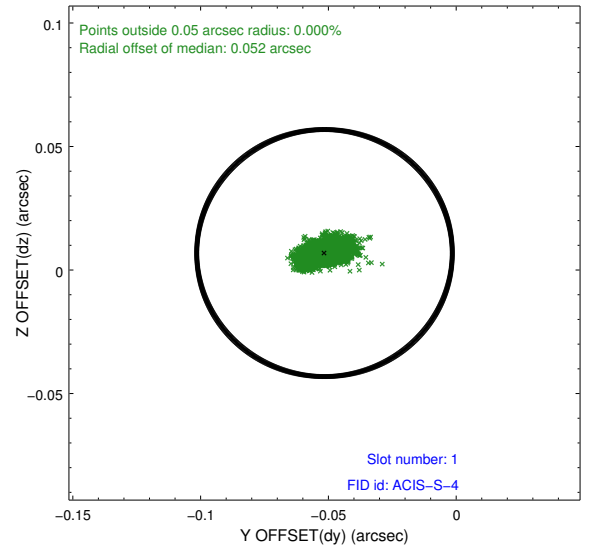
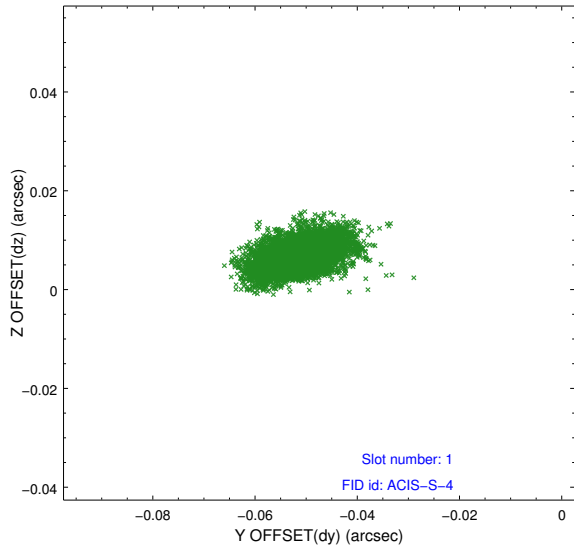


## 2.5 FID Slots

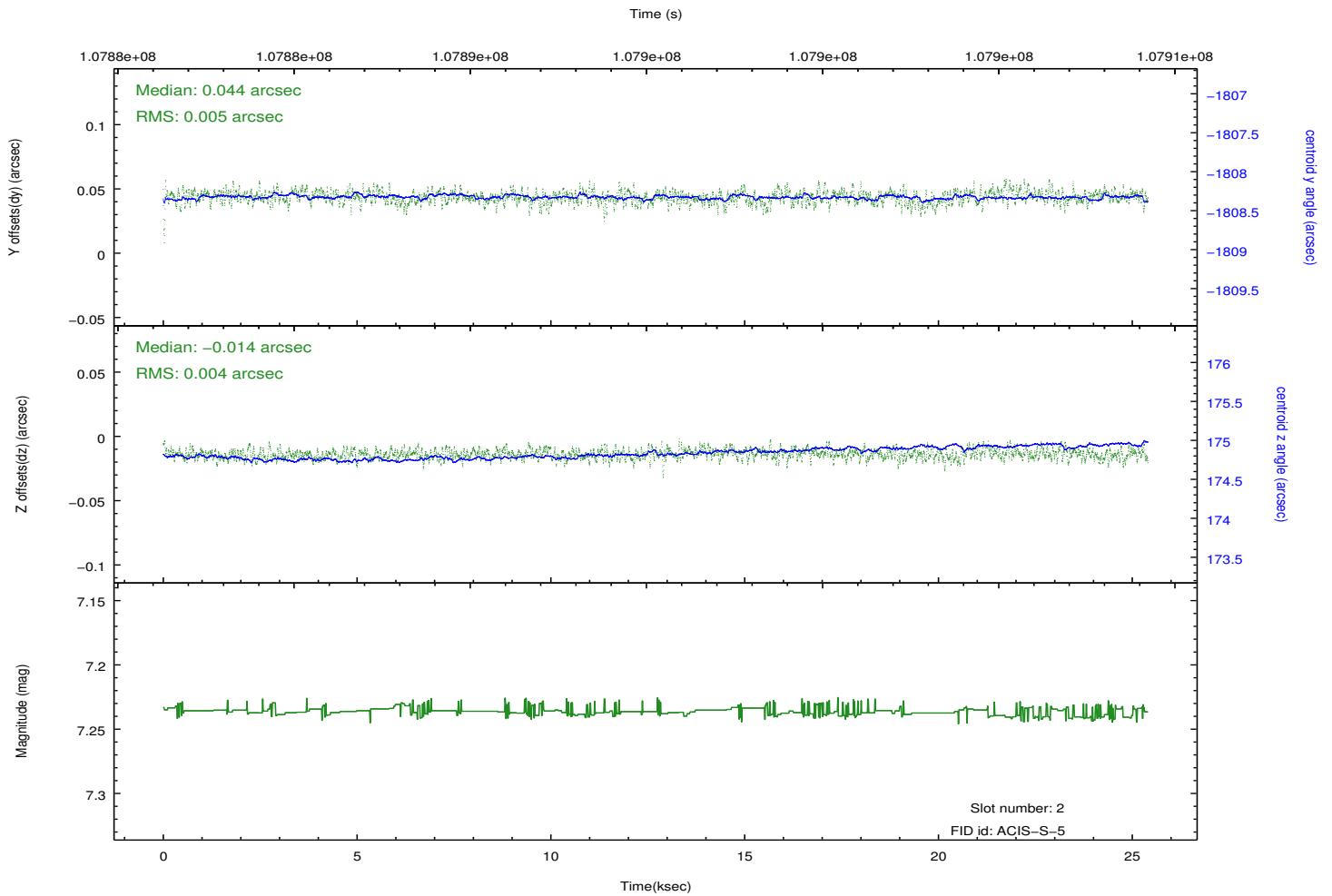
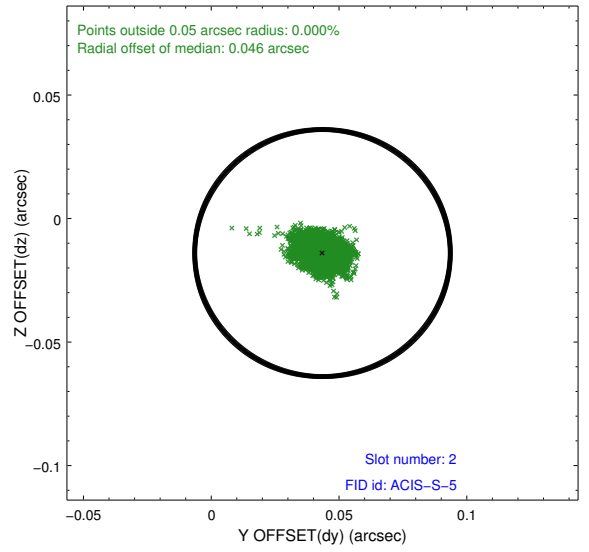
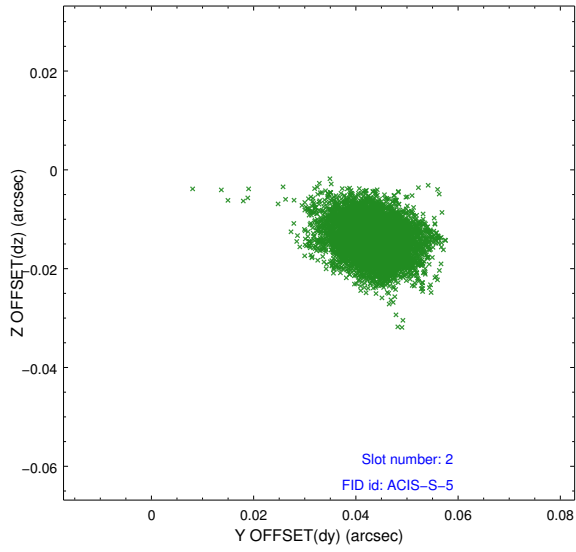
### 2.5.1 Slot 0



## 2.5.2 Slot 1



### 2.5.3 Slot 2



# A Summary

## A.1 Status

V&V Scientist	Jen Lauer
V&V Date (YYYY-MM-DD)	2012.09.20
V&V Edition	1
V&V Disposition and Status	OK
V&V Charge Time	25.4

## A.2 Comments