

V&V Reference Report

L2 ASCDS Version : 8.4.5

Observation 2516 - L2 Version 3
Chandra X-Ray Center

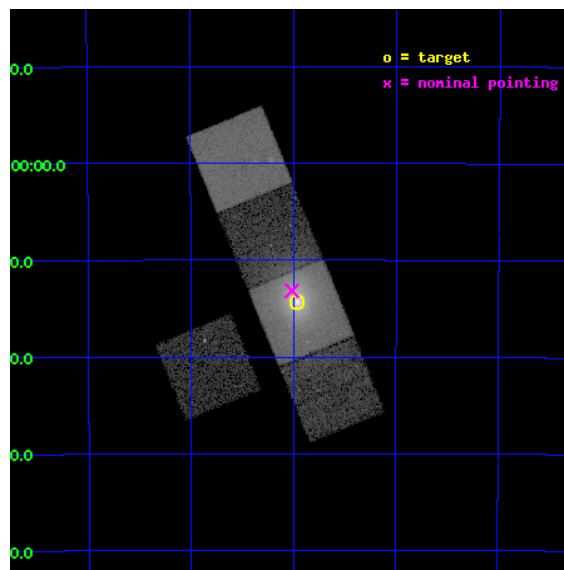
L2 Processing Date : Sep 24 2012

Contents

1	Front	2
2	OBI	3
2.1	OBI	3
2.1.1	Images	3
2.1.2	Bias	3
2.1.3	Parameters	4
2.1.4	Events	4
2.2	Compared Parameters	5
2.3	Aspect	6
2.4	Star Slots	9
2.4.1	Slot 3	9
2.4.2	Slot 4	10
2.4.3	Slot 5	11
2.4.4	Slot 6	12
2.4.5	Slot 7	13
2.5	FID Slots	14
2.5.1	Slot 0	14
2.5.2	Slot 1	15
2.5.3	Slot 2	16
A	Summary	17
A.1	Status	17
A.2	Comments	17

1 Front

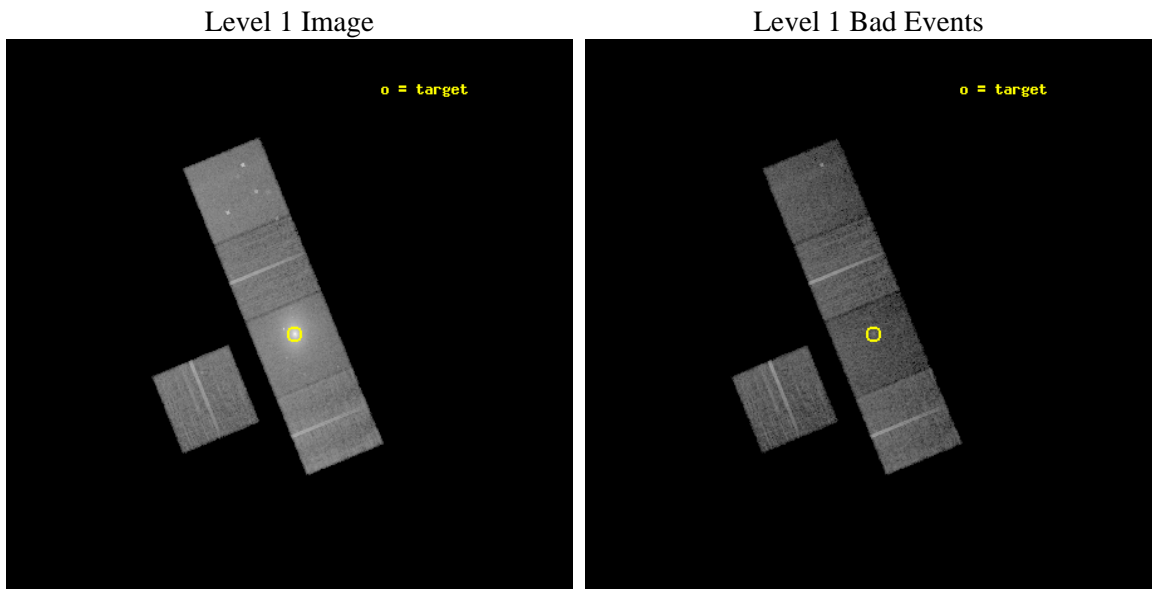
seq_num	800155	Sequence number
obs_id	2516	Observation id
title	THE INTERACTION BETWEEN CLUSTER CENTRAL RADIO SOURCES AND COOLING FLOWS	Proposal title
observer	Dr. CRAIG SARAZIN	Principal investigator
object	A3112	Source name
dtcycle	0	
cycle	P	events from which exps? Prim/Second/Both
ra_targ	49.490417	Observer's specified target RA [deg]
dec_targ	-44.238194	Observer's specified target Dec [deg]
ra_nom	49.503673128498	Nominal RA [deg]
dec_nom	-44.219671538348	Nominal Dec [deg]
roll_nom	67.73630577624	Nominal Roll [deg]
revision	3	Processing version of data
ontime	17142.999967039	Sum of GTIs [s]
livetime	16919.014051976	Livetime [s]
ontime3	17142.999967039	Sum of GTIs [s]
ontime5	17142.999967039	Sum of GTIs [s]
ontime6	17139.859006807	Sum of GTIs [s]
ontime7	17142.999967039	Sum of GTIs [s]
ontime8	17142.999967039	Sum of GTIs [s]
l2events	257245	Number of level 2 events



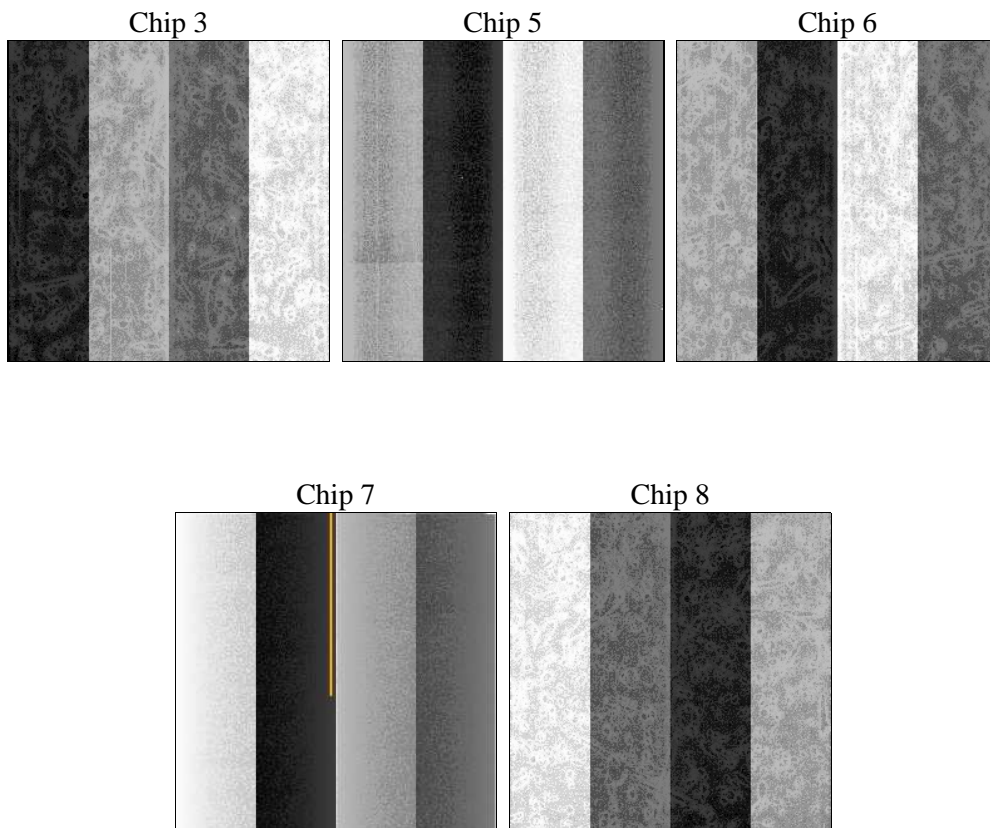
2 OBI

2.1 OBI

2.1.1 Images



2.1.2 Bias



2.1.3 Parameters

obi_num	0	Obi number	sched_exp_time	17000.000000	[s] Scheduled observation exposure time
ascdsver	8.4.5	Processing system revision	ontime	17142.999967039	Sum of GTIs [s]
caldbver	4.5.1.1	 	ontime3	17142.999967039	Sum of GTIs [s]
date	2012-09-24T08:38:54	Date and time of file creation	ontime5	17142.999967039	Sum of GTIs [s]
revision	3	Processing version of data	ontime6	17139.859006807	Sum of GTIs [s]
			ontime7	17142.999967039	Sum of GTIs [s]
			ontime8	17142.999967039	Sum of GTIs [s]
			l1events	694273	Number of level 1 events

2.1.4 Events

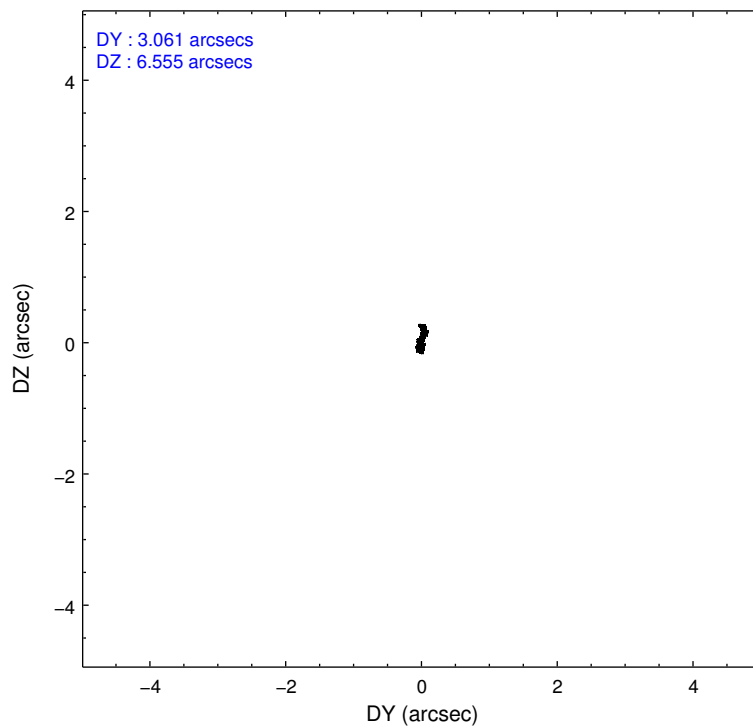
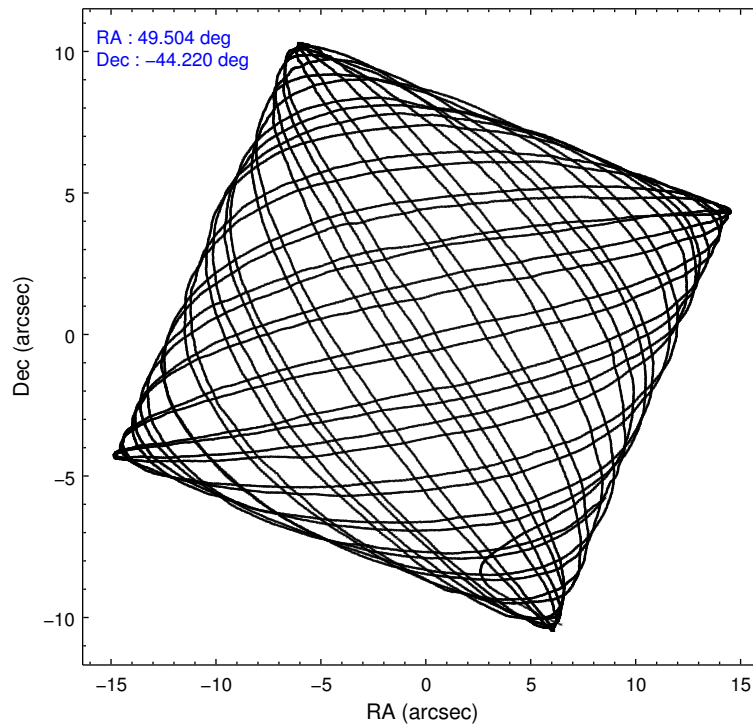
	ccd 3	ccd 5	ccd 6	ccd 7	ccd 8
level 1 events	98148	133043	107025	222687	133370
rejected events	88939	66654	91563	59344	99375
rejected %	90%	50%	85%	26%	74%

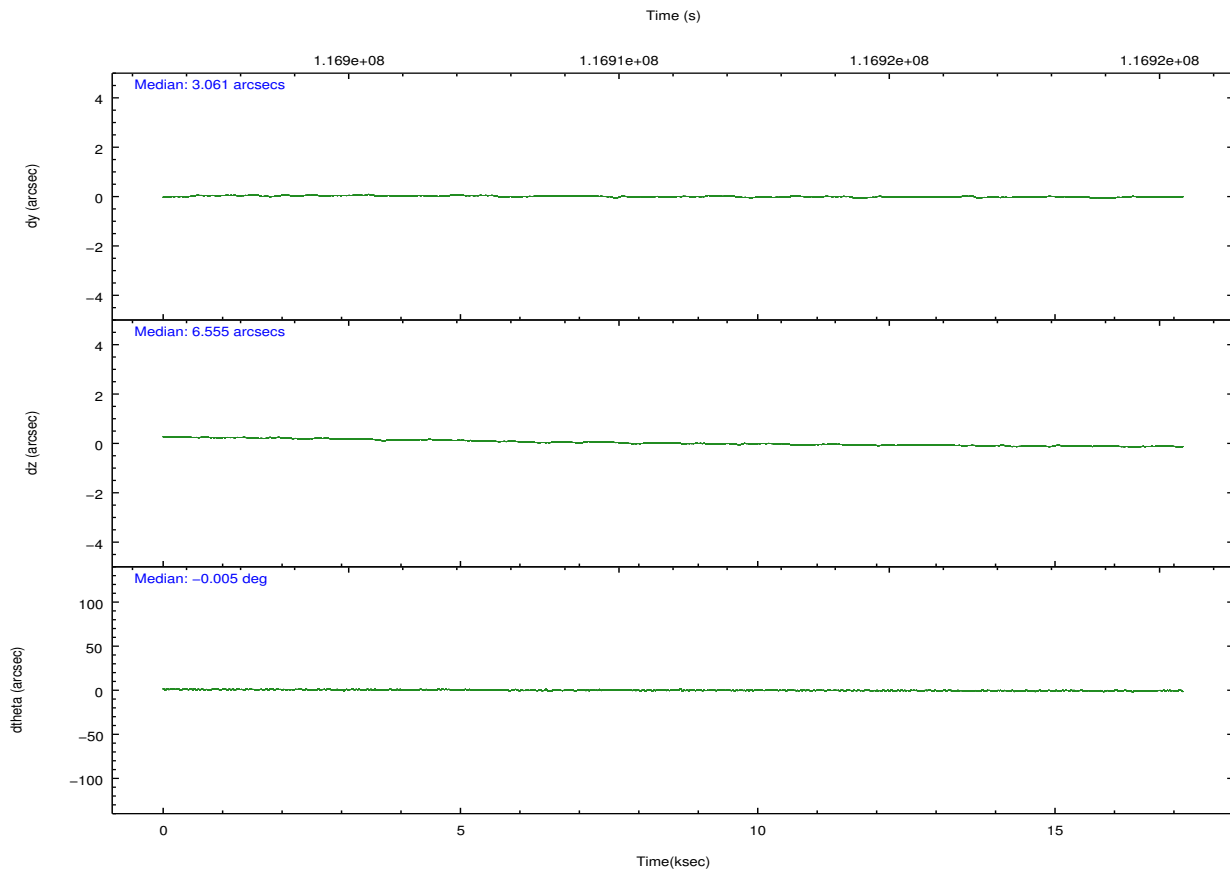
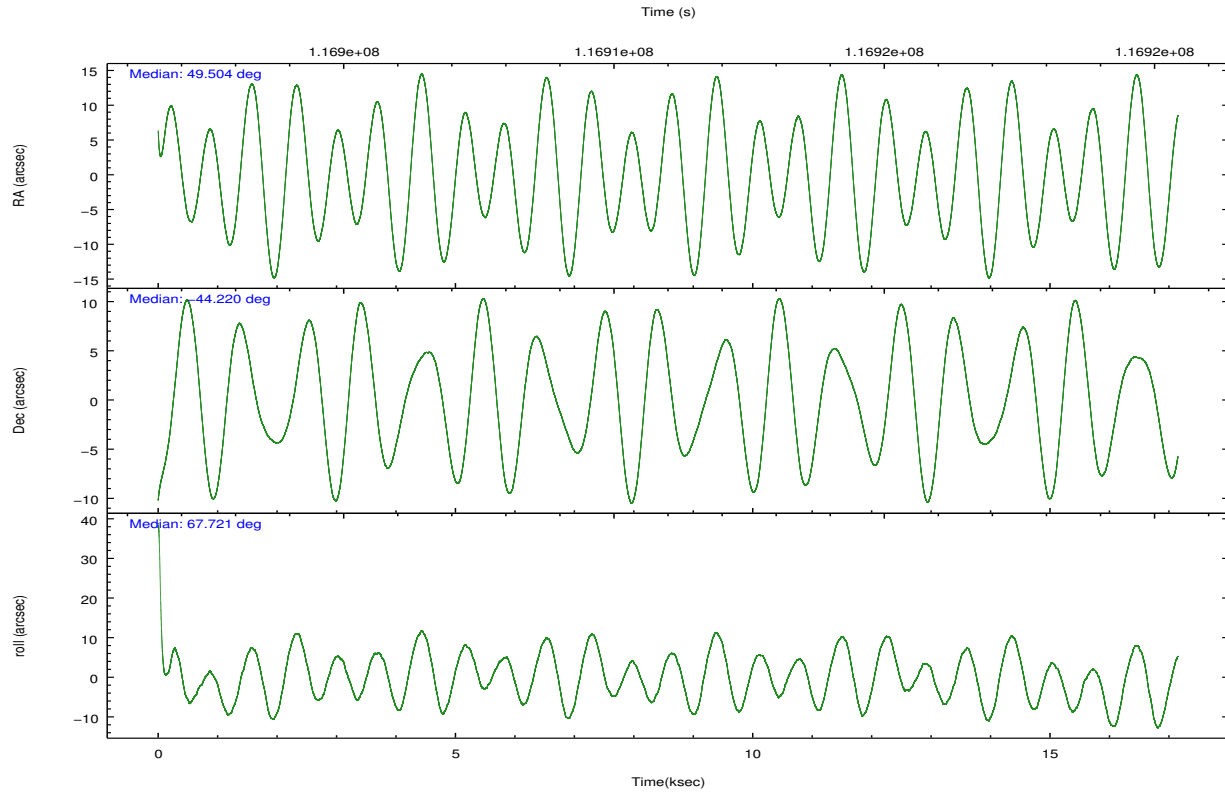
	ccd 3	ccd 5	ccd 6	ccd 7	ccd 8
grade 0 events	3873	8320	8437	43719	13026
	3%	6%	7%	19%	9%
grade 1 events	48	130	67	146	104
	0%	0%	0%	0%	0%
grade 2 events	1817	20137	2632	39996	6424
	1%	15%	2%	17%	4%
grade 3 events	1052	3480	1300	18149	4029
	1%	2%	1%	8%	3%
grade 4 events	977	3503	1241	17914	3776
	0%	2%	1%	8%	2%
grade 5 events	3258	10560	3623	11595	5006
	3%	7%	3%	5%	3%
grade 6 events	1728	33434	2179	46598	7575
	1%	25%	2%	20%	5%
grade 7 events	85395	53479	87546	44570	93430
	87%	40%	81%	20%	70%

2.2 Compared Parameters

Parameter	Planned	Actual	Parameter	Planned	Actual
Instrument	ACIS	ACIS	Obspar format version number	7	7
Detector	ACIS-35678	ACIS-35678	Obspar file type	PREDICTED	ACTUAL
Grating	NONE	NONE	Obspar update status	NONE	UPDATED
Data mode	VFAINT	VFAINT	Number of optional ACIS chips dropped	0	0
Observation mode	POINTING	POINTING	On-chip summing requested	N	N
[deg] Pointing RA	49.509224	49.5036731284975	Subarray requested	NONE	NONE
[deg] Pointing Dec	-44.246636	-44.21967153834836	Alternating exposures requested	N	N
[deg] Pointing Roll	67.583518	67.73630577623987	[s] Primary exposure time	0.000000	3.1
[mm] SIM focus pos	-0.684267	-0.6828225247311905			
[mm] SIM defocus	0	0.001444936568705701			
[mm] SIM translation stage pos	-190.132523	-190.1400660498719			
[mm] SIM translation stage offset	0	0.00754346686406393			
[s] Observation start time (MET)	116902575.184000	116901298.72754			
Observation start date	2001-09-15T00:55:11	2001-09-15T00:34:58			
[s] Observation end time (MET)	116919575.184000	116919999.34078			
Observation end date	2001-09-15T05:38:31	2001-09-15T05:46:39			
Read mode	TIMED	TIMED			

2.3 Aspect



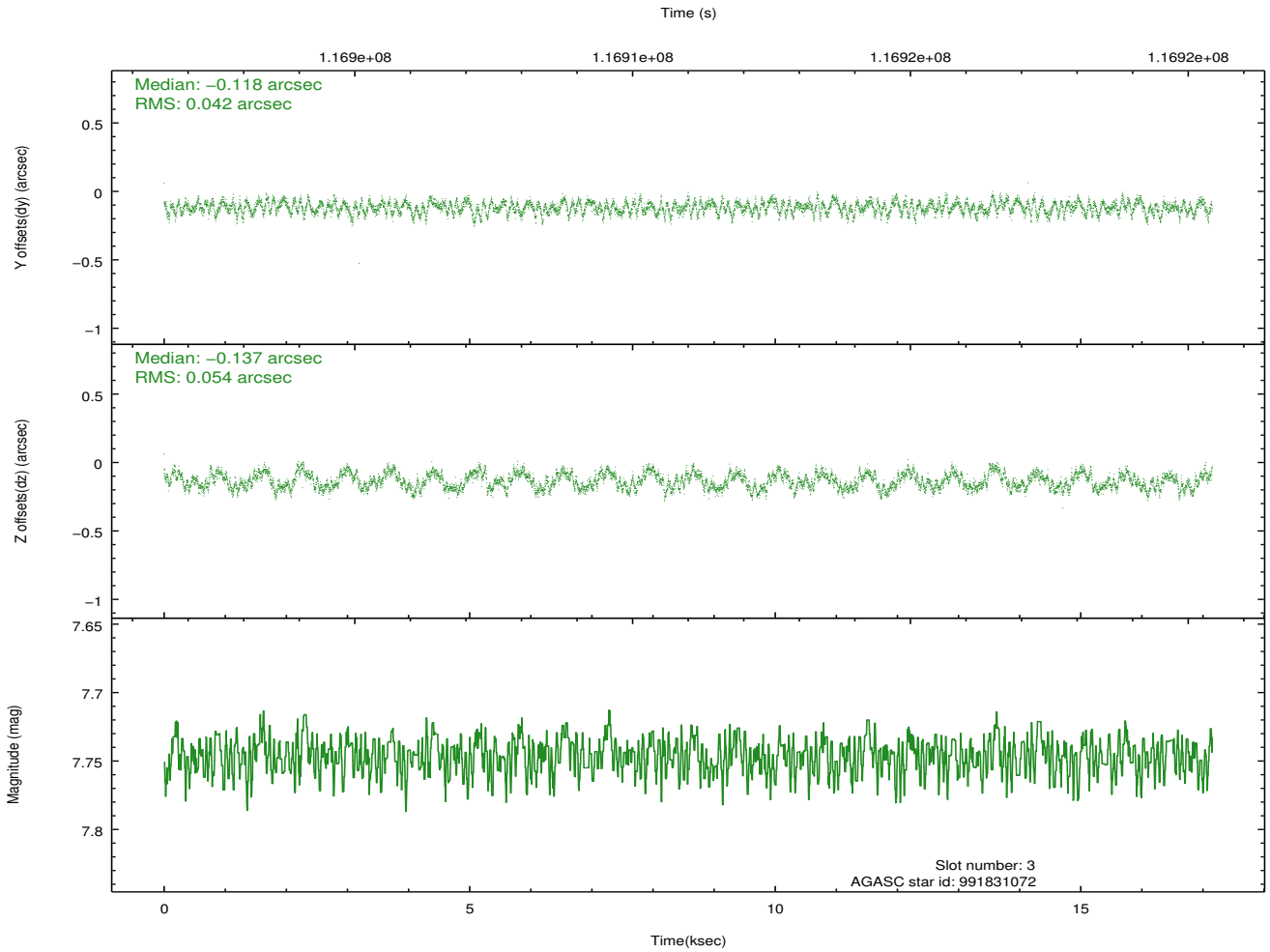
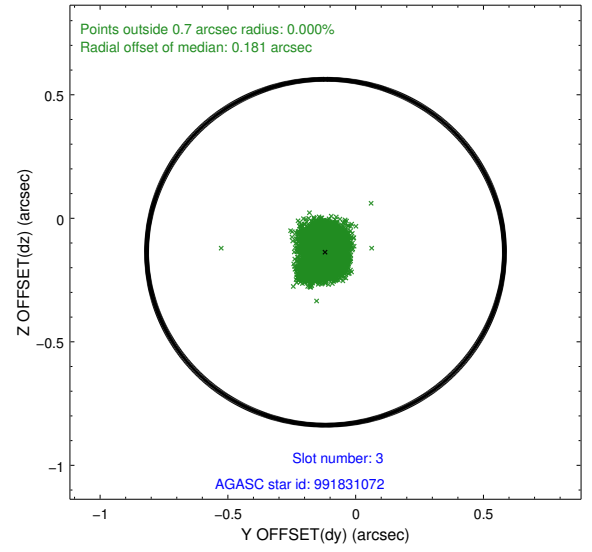
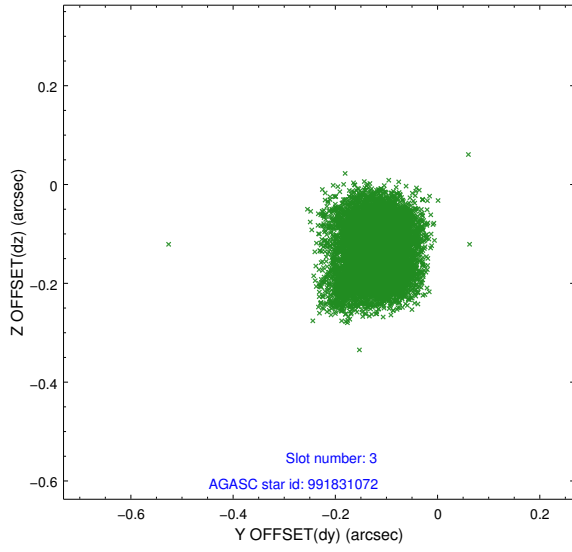


Slot Statistics

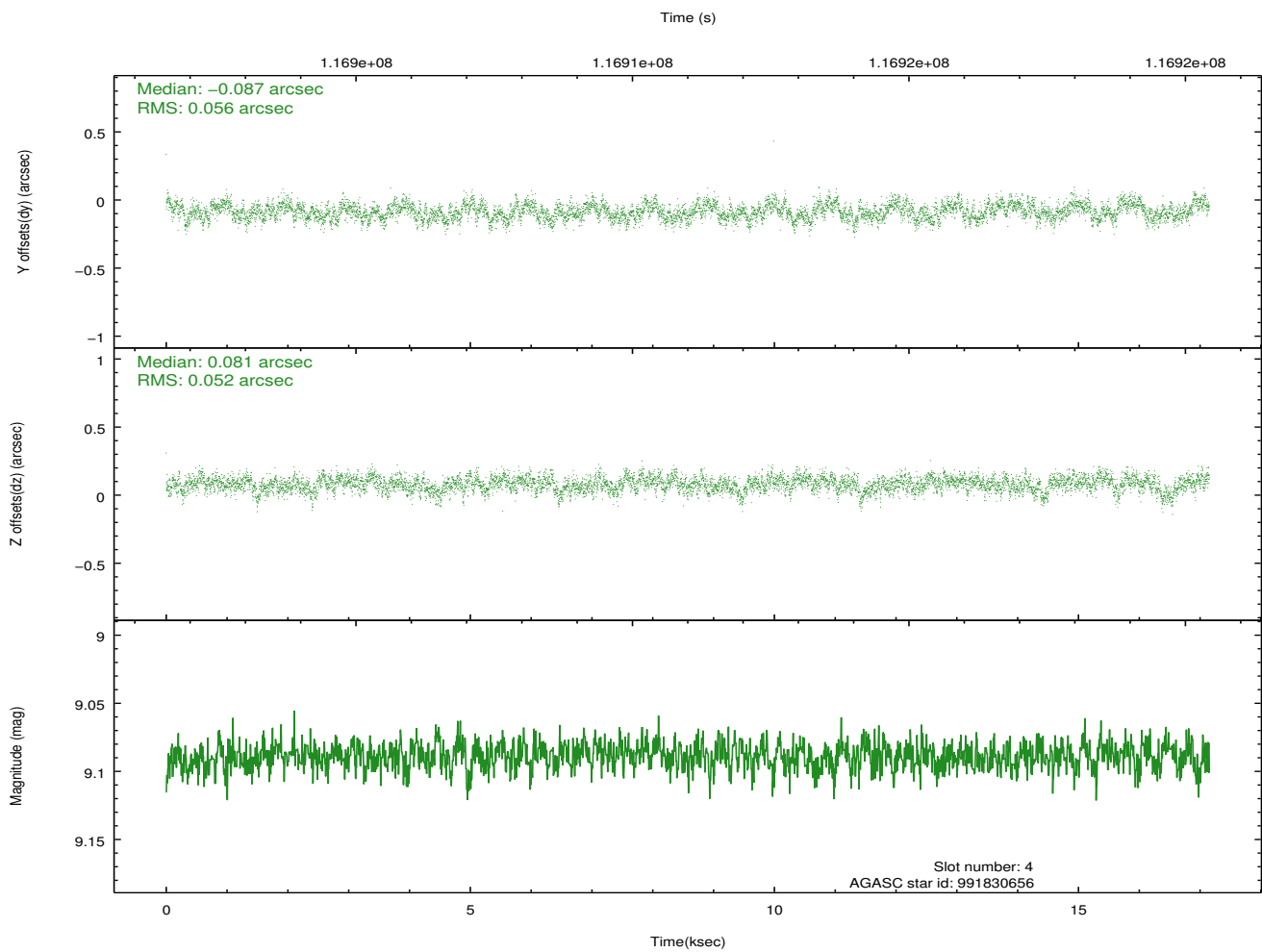
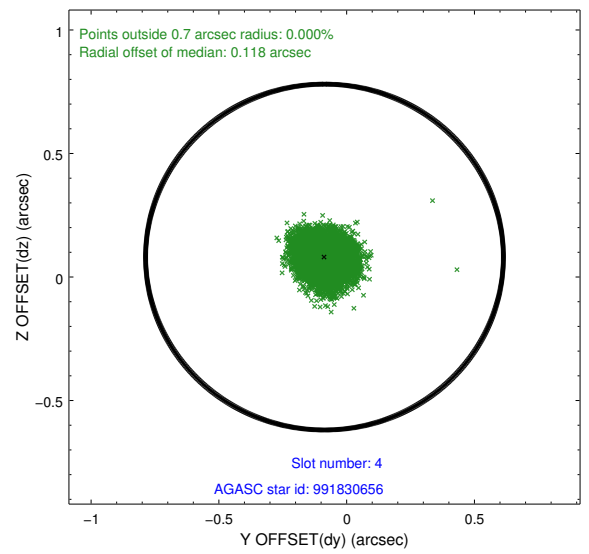
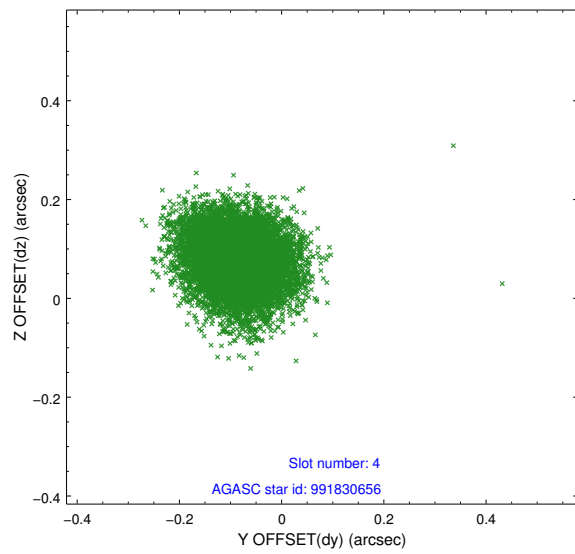
slot	status	id	mag	n_pts	med_dy	med_dz	dr1	dr2	ra	dec	mean_y	mean_z
0	FID	ACIS-S-2	7.11	4184	-0.016	0.012	0.009	0.014	0.000000	0.000000	-755.70	-1727.74
1	FID	ACIS-S-4	7.20	4184	-0.041	0.004	0.006	0.011	0.000000	0.000000	2157.42	180.53
2	FID	ACIS-S-5	7.24	4184	0.025	-0.008	0.008	0.013	0.000000	0.000000	-1808.21	174.41
3	GUIDE	991831072	7.75	8366	-0.118	-0.137	0.074	0.114	48.737752	-44.120462	-349.52	2012.73
4	GUIDE	991830656	9.09	8367	-0.087	0.081	0.081	0.130	49.908080	-44.245128	395.18	-949.07
5	GUIDE	991830952	9.40	8365	0.023	-0.077	0.086	0.141	49.257291	-44.425398	-842.71	352.83
6	GUIDE	991825280	10.14	8294	0.077	0.189	0.132	0.211	49.472332	-44.701981	-1551.15	-537.75
7	GUIDE	991828952	10.12	8363	0.105	-0.053	0.118	0.195	49.103151	-44.358377	-772.99	811.78

2.4 Star Slots

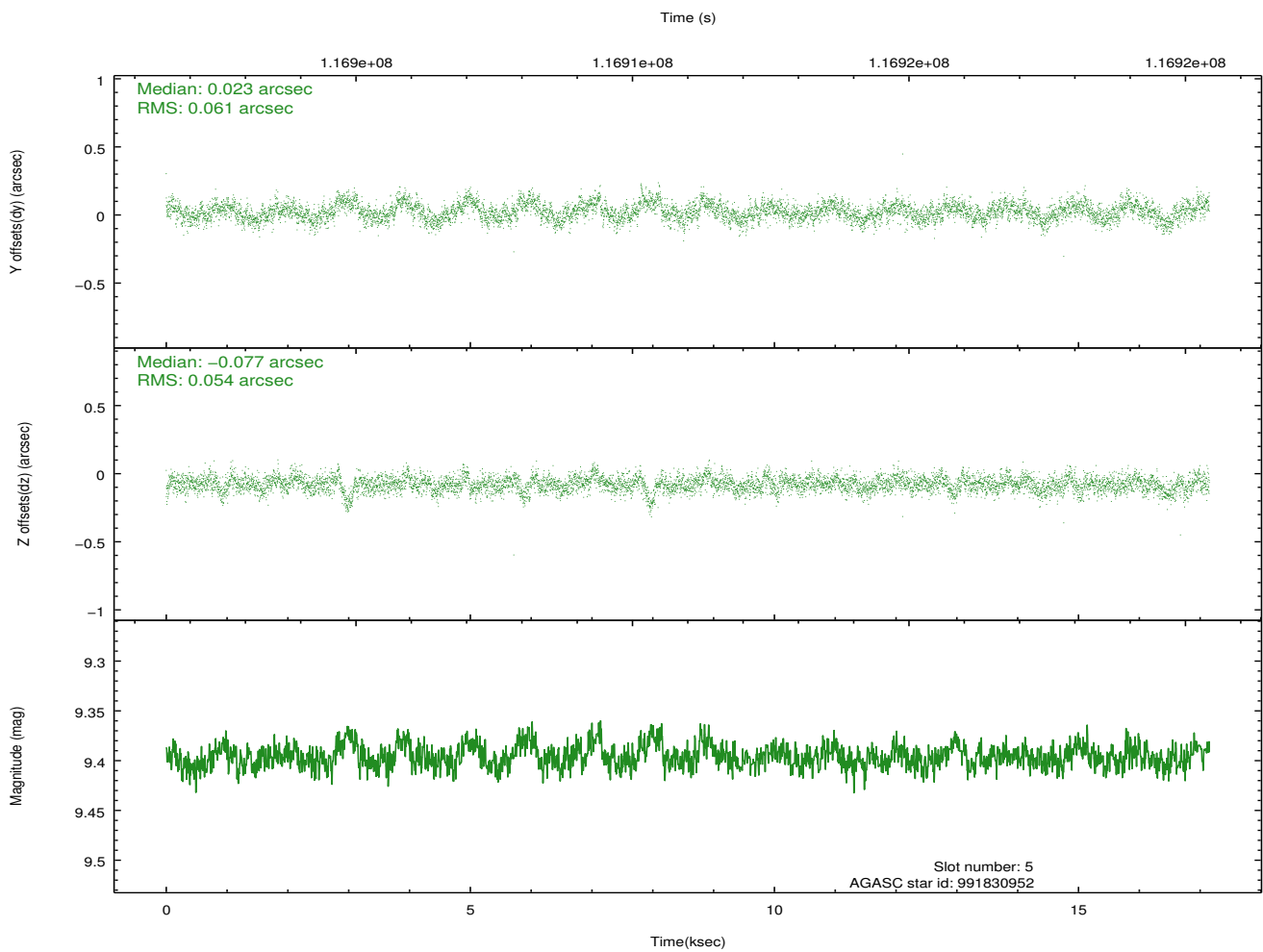
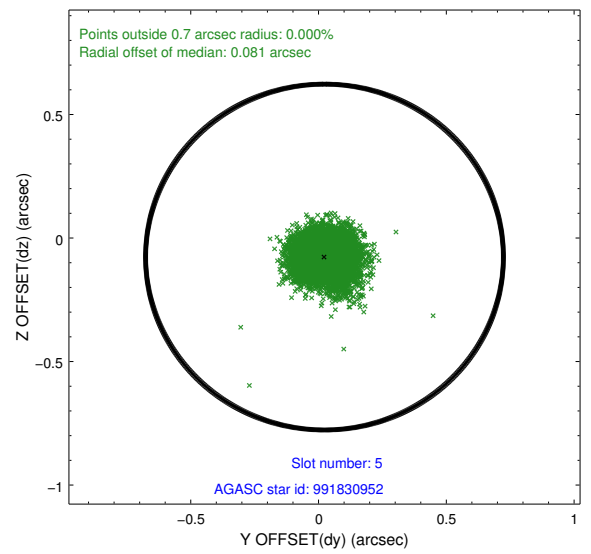
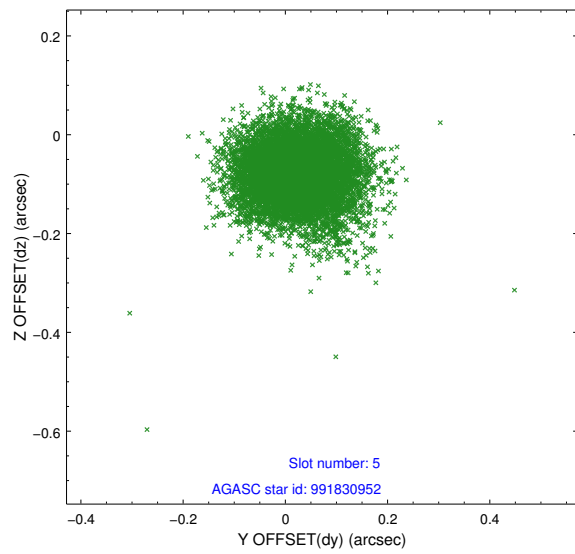
2.4.1 Slot 3



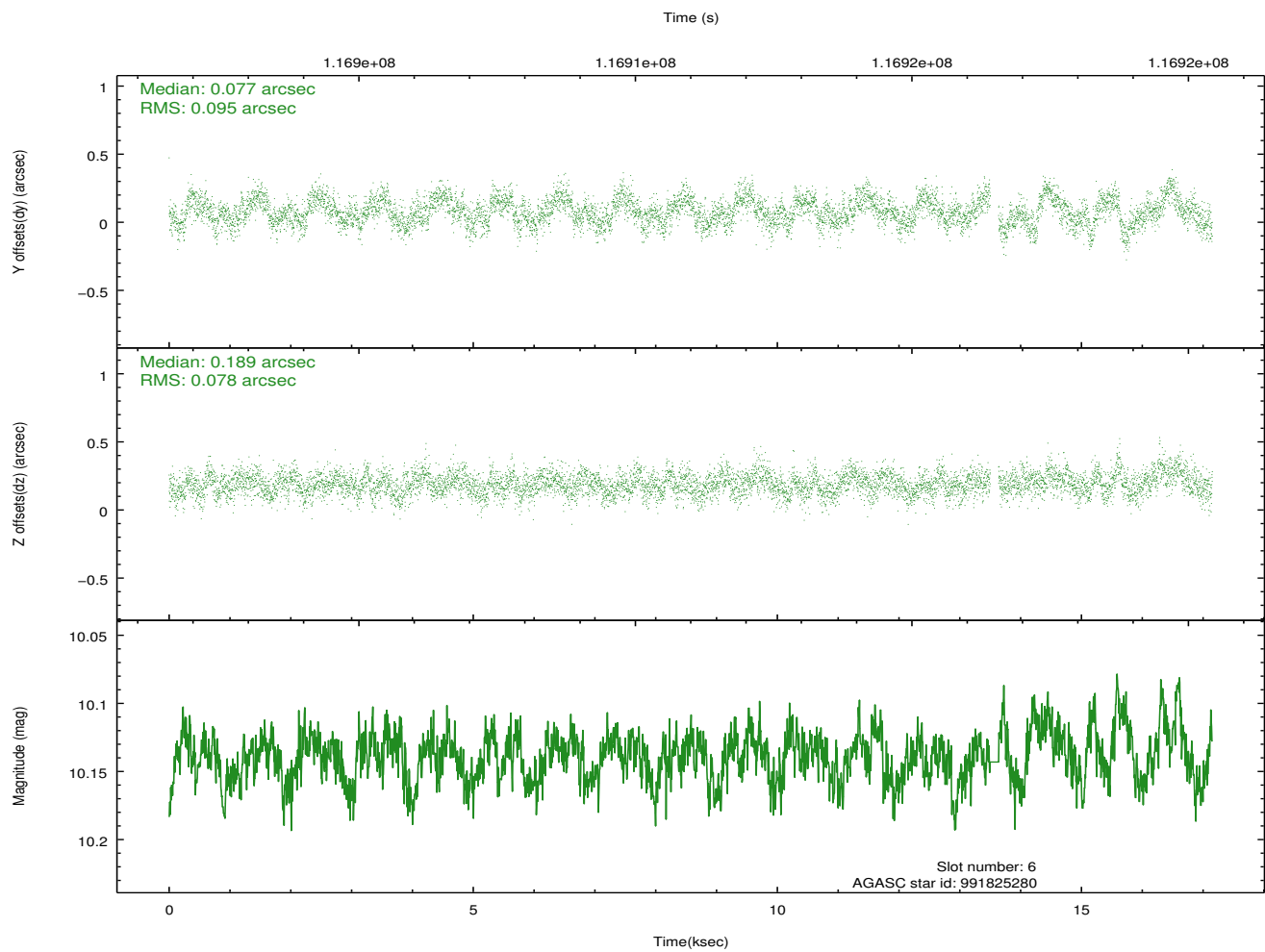
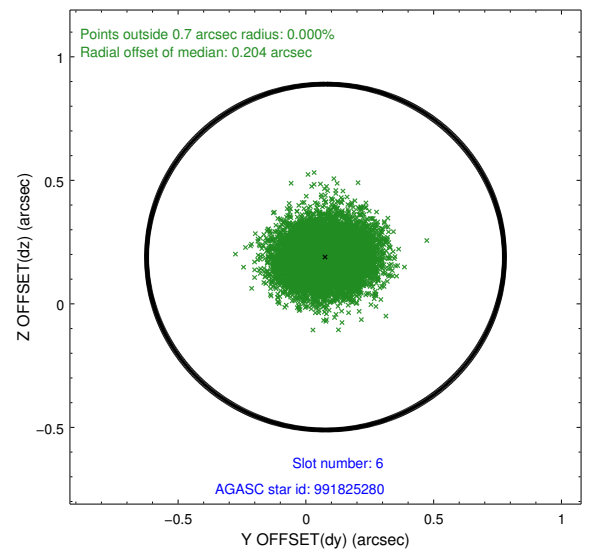
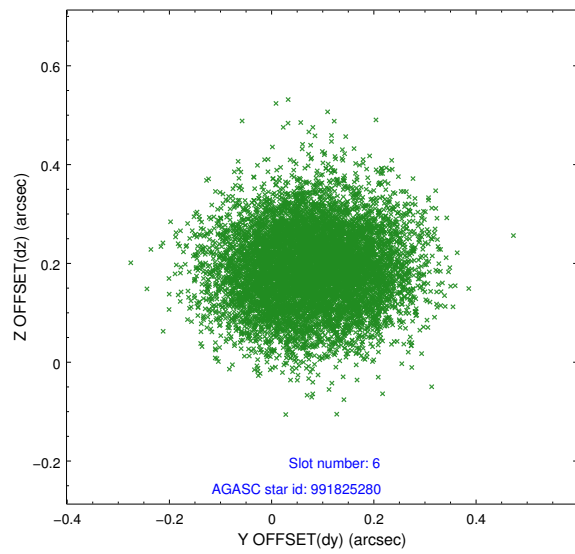
2.4.2 Slot 4



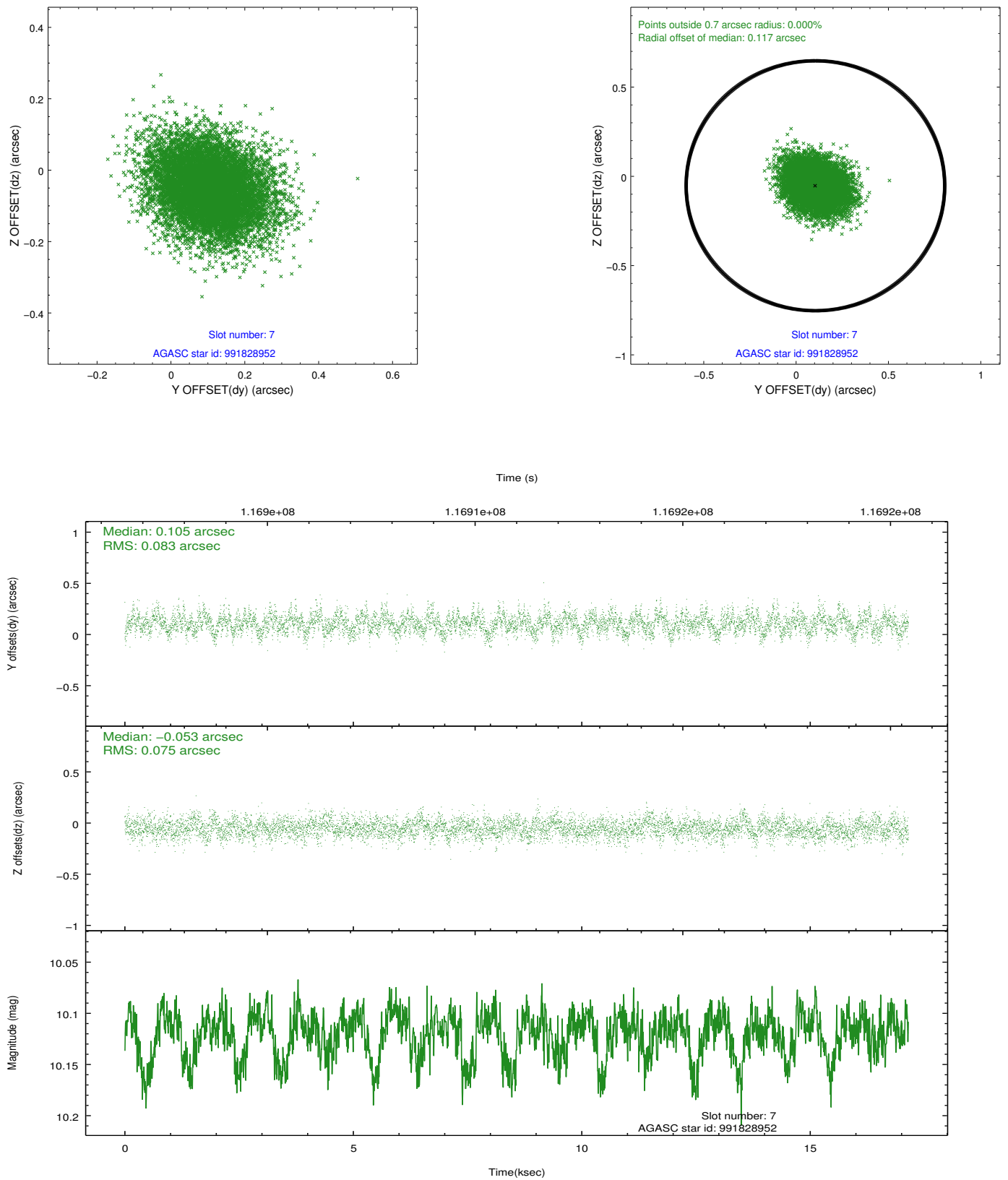
2.4.3 Slot 5



2.4.4 Slot 6

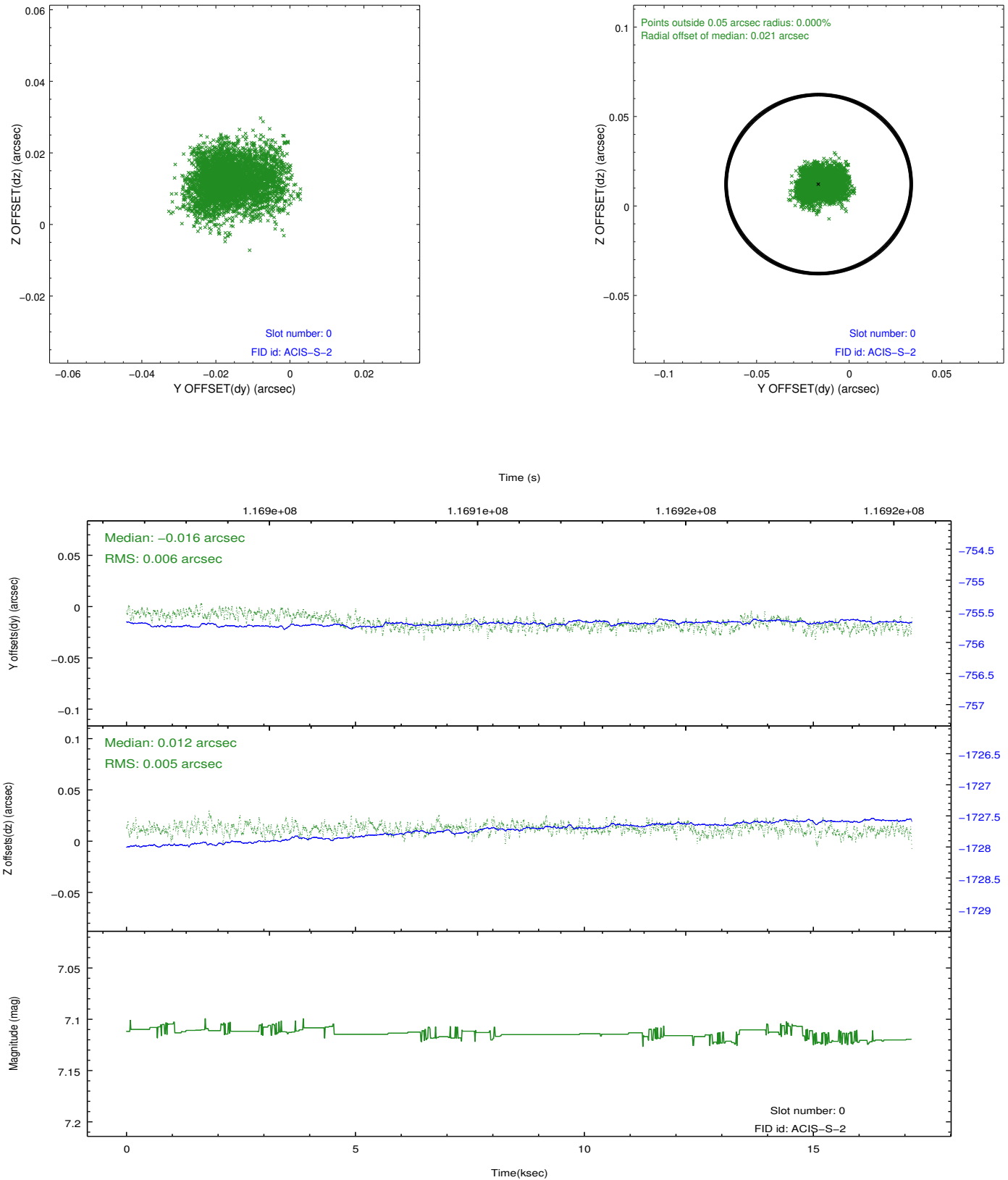


2.4.5 Slot 7

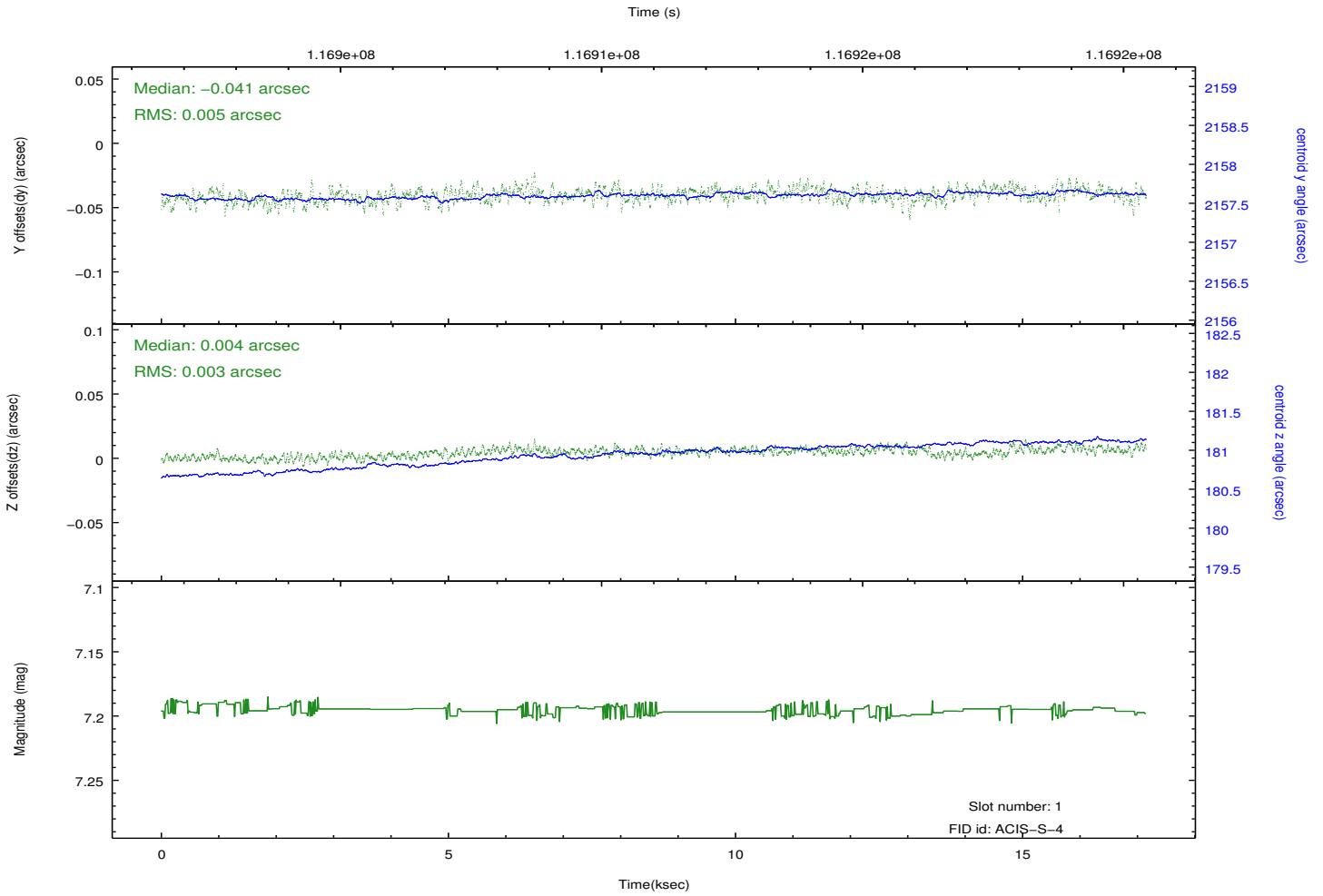
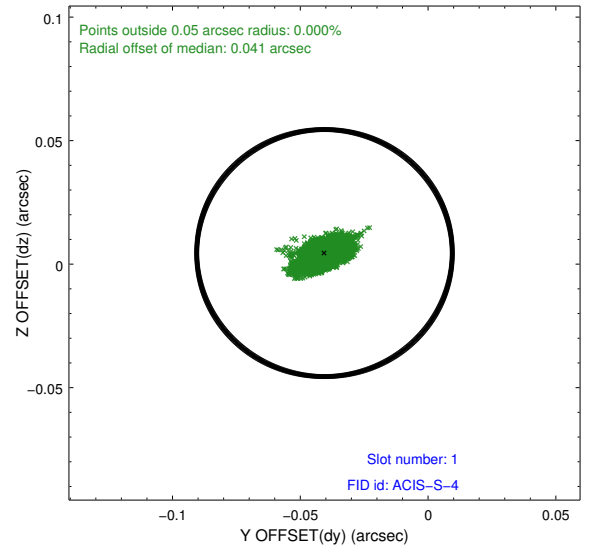
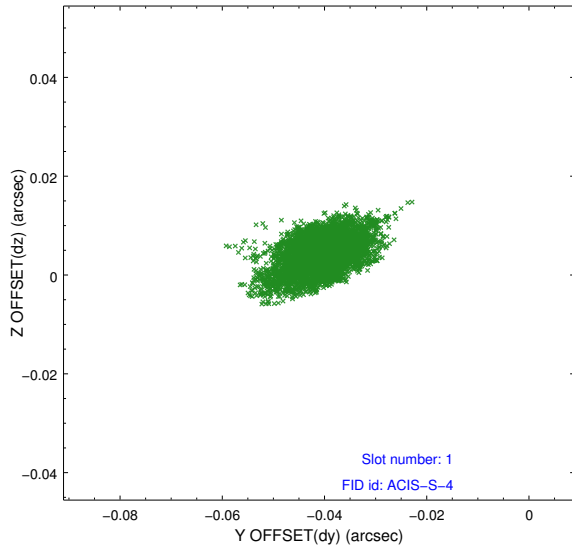


2.5 FID Slots

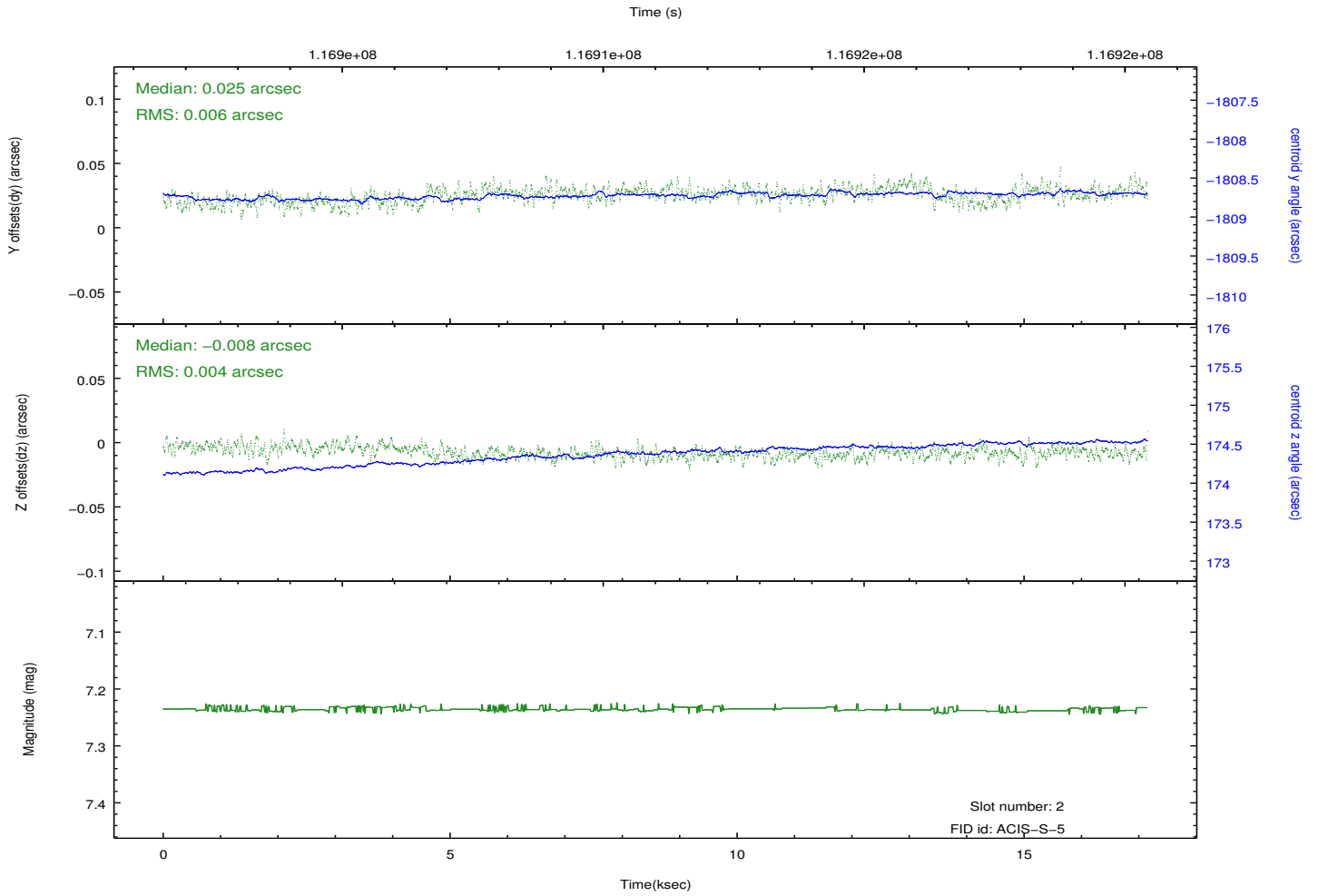
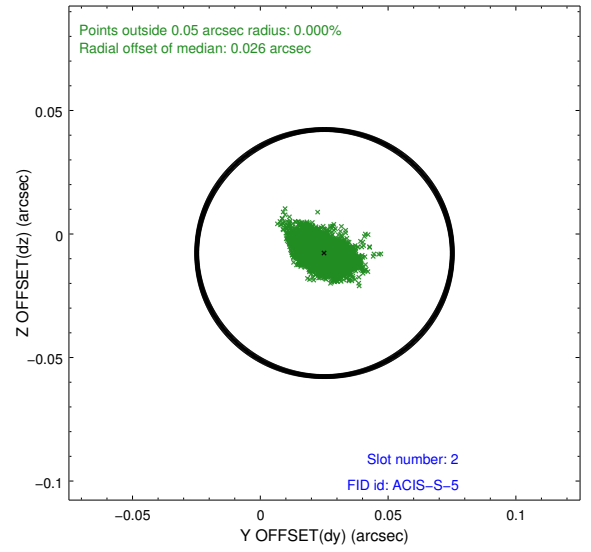
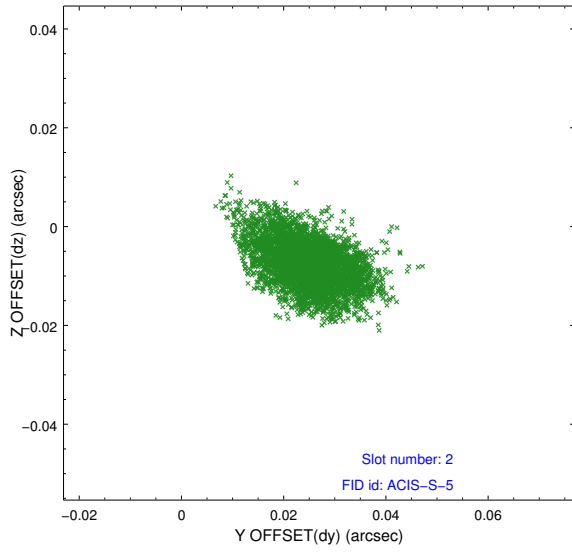
2.5.1 Slot 0



2.5.2 Slot 1



2.5.3 Slot 2



A Summary

A.1 Status

V&V Scientist	Jen Lauer
V&V Date (YYYY-MM-DD)	2012.09.26
V&V Edition	1
V&V Disposition and Status	OK
V&V Charge Time	17.142

A.2 Comments