

V&V Reference Report

L2 ASCDS Version : 8.4.5

Observation 2546 - L2 Version 3
Chandra X-Ray Center

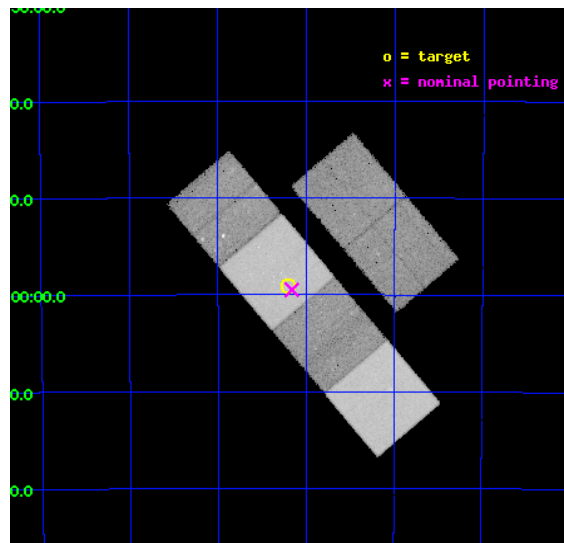
L2 Processing Date : Oct 17 2012

Contents

1	Front	2
2	OBI	3
2.1	OBI	3
2.1.1	Images	3
2.1.2	Bias	3
2.1.3	Parameters	4
2.1.4	Events	4
2.2	Compared Parameters	5
2.3	Aspect	6
2.4	Star Slots	9
2.4.1	Slot 3	9
2.4.2	Slot 4	10
2.4.3	Slot 5	11
2.4.4	Slot 6	12
2.4.5	Slot 7	13
2.5	FID Slots	14
2.5.1	Slot 0	14
2.5.2	Slot 1	15
2.5.3	Slot 2	16
A	Summary	17
A.1	Status	17
A.2	Comments	17

1 Front

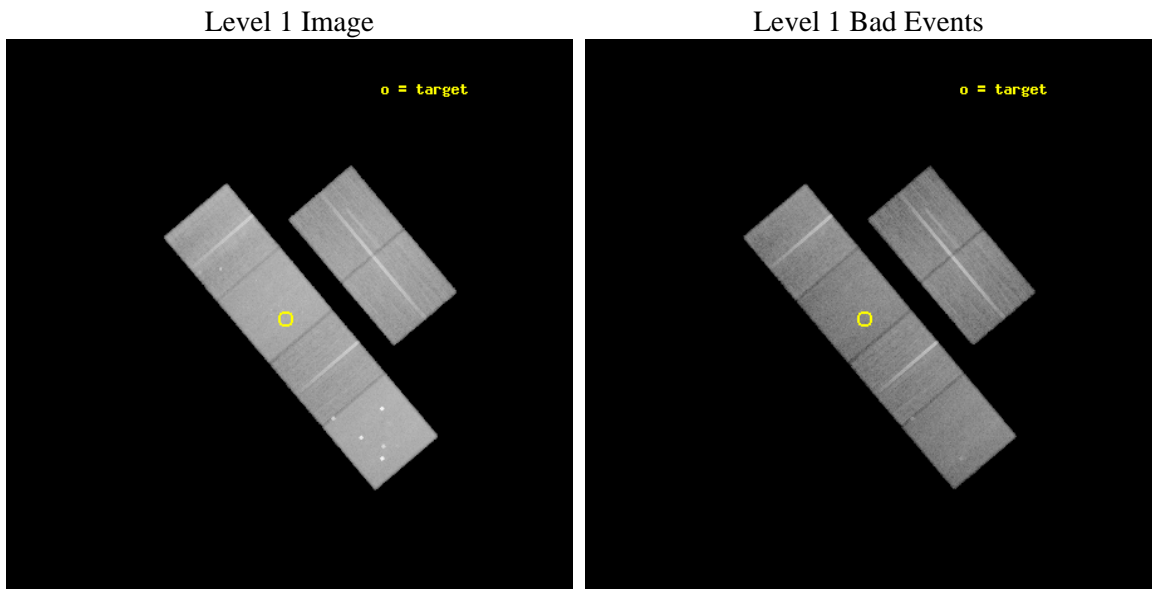
seq_num	200154	Sequence number
obs_id	2546	Observation id
title	UNDERSTANDING THE ENGINE OF GROWTH IN PLANETARY NEBULAE	Proposal t
observer	Dr. Joel Kastner	Principal investigator
object	MZ 3	Source name
dtcycle	0	
cycle	P	events from which exps? Prim/Second/Both
ra_targ	244.3025	Observer's specified target RA [deg]
dec_targ	-51.985556	Observer's specified target Dec [deg]
ra_nom	244.29041260383	Nominal RA [deg]
dec_nom	-51.991718619099	Nominal Dec [deg]
roll_nom	229.75400824407	Nominal Roll [deg]
revision	3	Processing version of data
ontime	41359.885398686	Sum of GTIs [s]
livetime	40836.161625835	Livetime [s]
ontime2	41353.444518149	Sum of GTIs [s]
ontime3	41359.762278676	Sum of GTIs [s]
ontime5	41359.844358683	Sum of GTIs [s]
ontime6	41359.803318679	Sum of GTIs [s]
ontime7	41359.885398686	Sum of GTIs [s]
ontime8	41356.480248541	Sum of GTIs [s]
l2events	440543	Number of level 2 events



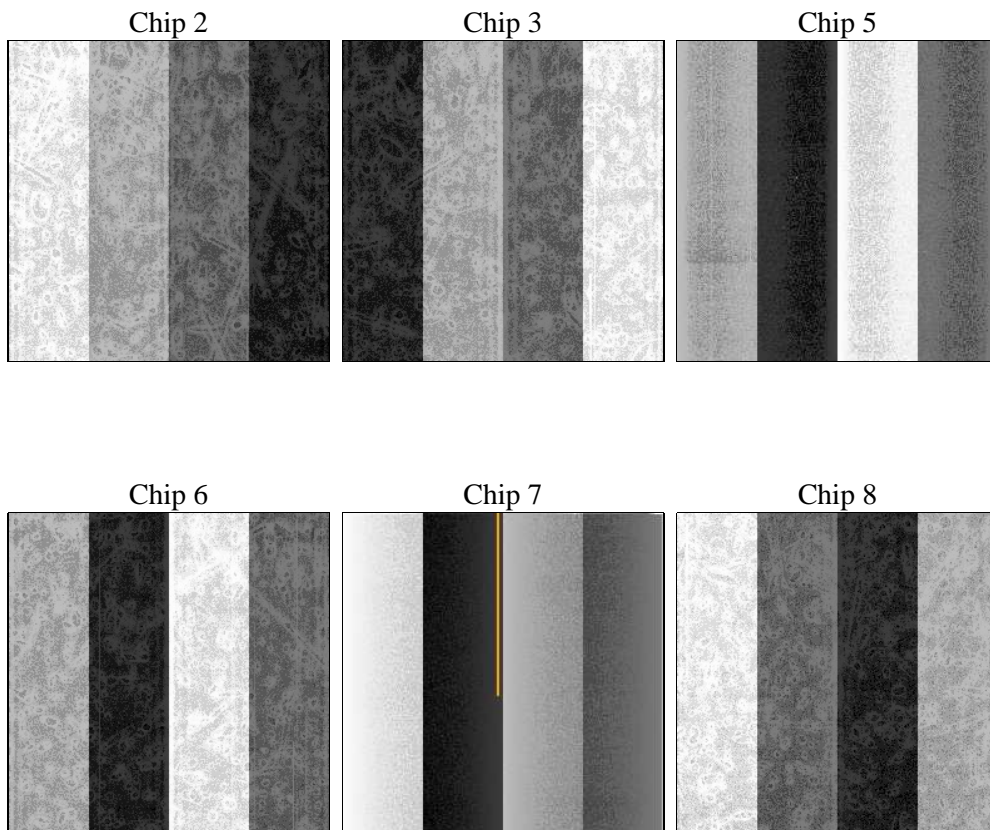
2 OBI

2.1 OBI

2.1.1 Images



2.1.2 Bias



2.1.3 Parameters

obi_num	0	Obi number	sched_exp_time	41400.000000	[s] Scheduled observation exposure time
ascdsver	8.4.5	Processing system revision	ontime	41359.885398686	Sum of GTIs [s]
caldbver	4.5.2	 	ontime2	41353.444518149	Sum of GTIs [s]
date	2012-10-17T01:10:58	Date and time of file creation	ontime3	41359.762278676	Sum of GTIs [s]
revision	3	Processing version of data	ontime5	41359.844358683	Sum of GTIs [s]
			ontime6	41359.803318679	Sum of GTIs [s]
			ontime7	41359.885398686	Sum of GTIs [s]
			ontime8	41356.480248541	Sum of GTIs [s]
			l1events	1849384	Number of level 1 events

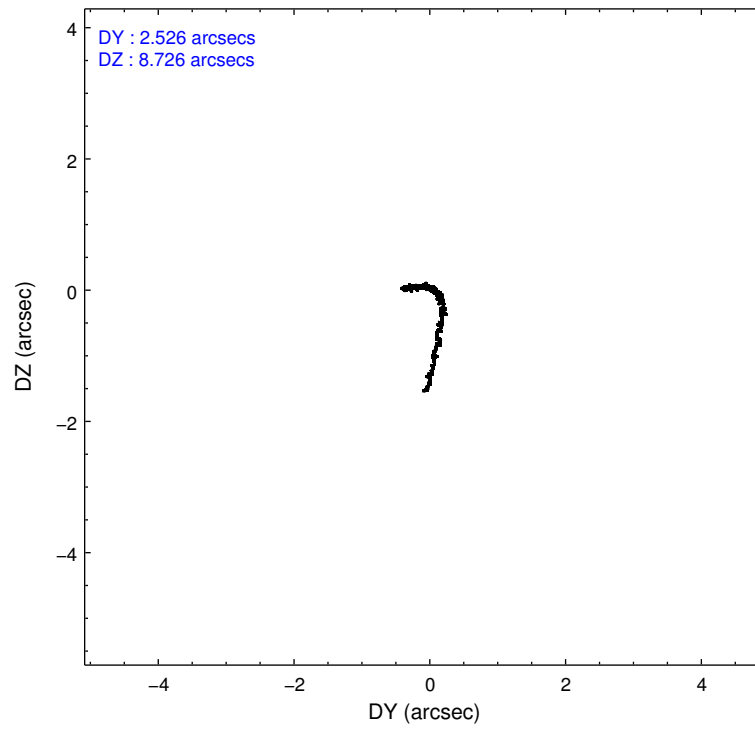
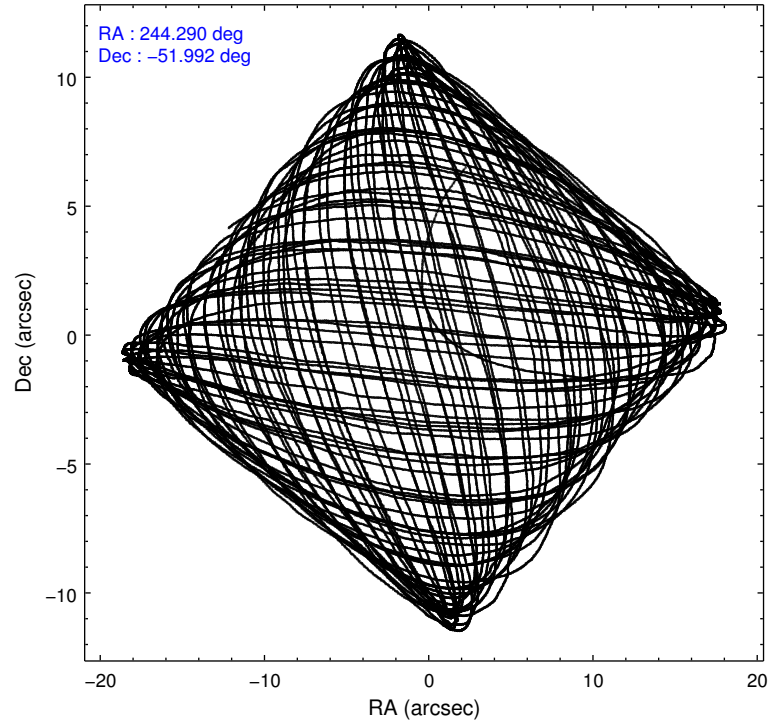
2.1.4 Events

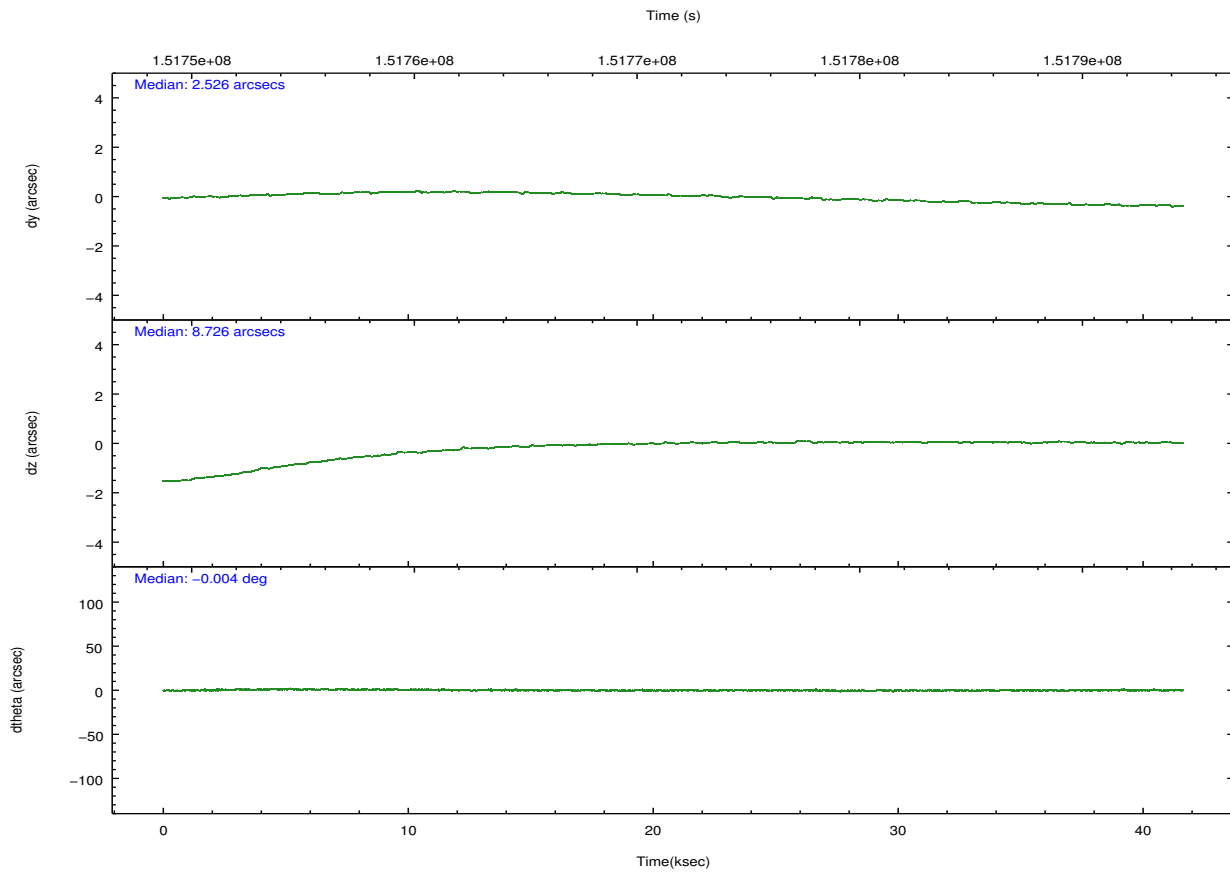
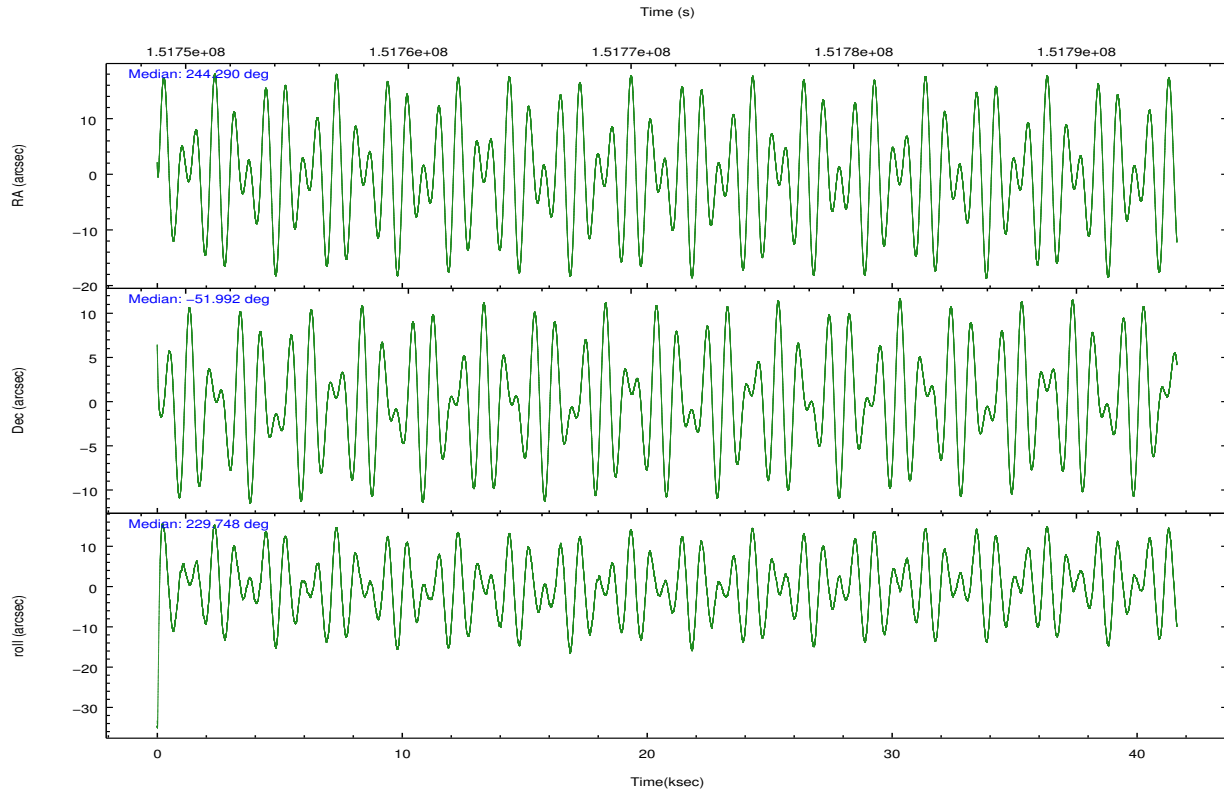
	ccd 2	ccd 3	ccd 5	ccd 6	ccd 7	ccd 8		ccd 2	ccd 3	ccd 5	ccd 6	ccd 7	ccd 8
level 1 events	264758	251139	393239	264255	348623	327370	grade 0 events	18064	16215	33509	17472	16666	28188
rejected events	228927	217859	201271	227610	197634	252778		6%	6%	8%	6%	4%	8%
rejected %	86%	86%	51%	86%	56%	77%	grade 1 events	167	151	1015	151	295	231
								0%	0%	0%	0%	0%	0%
							grade 2 events	6597	5838	54702	6795	30478	14931
								2%	2%	13%	2%	8%	4%
							grade 3 events	3057	3042	7583	3110	14004	7396
								1%	1%	1%	1%	4%	2%
							grade 4 events	3102	3024	7369	3059	13741	6894
								1%	1%	1%	1%	3%	2%
							grade 5 events	9769	10777	27379	11433	32287	14697
								3%	4%	6%	4%	9%	4%
							grade 6 events	5015	5165	88838	6212	76127	17186
								1%	2%	22%	2%	21%	5%
							grade 7 events	218987	206927	172844	216023	165025	237847
								82%	82%	43%	81%	47%	72%

2.2 Compared Parameters

Parameter	Planned	Actual	Parameter	Planned	Actual
Instrument	ACIS	ACIS	Obspar format version number	7	7
Detector	ACIS-235678	ACIS-235678	Obspar file type	PREDICTED	ACTUAL
Grating	NONE	NONE	Obspar update status	NONE	UPDATED
Data mode	FAINT	FAINT	Number of optional ACIS chips dropped	0	0
Observation mode	POINTING	POINTING	On-chip summing requested	N	N
[deg] Pointing RA	244.297681	244.2904126038271	Subarray requested	NONE	NONE
[deg] Pointing Dec	-51.964868	-51.99171861909937	Alternating exposures requested	N	N
[deg] Pointing Roll	229.603123	229.7540082440659	[s] Primary exposure time	0.000000	3.2
[mm] SIM focus pos	-0.684267	-0.6828225247311905			
[mm] SIM defocus	0	0.001444936568705701			
[mm] SIM translation stage pos	-190.132523	-190.1400660498719			
[mm] SIM translation stage offset	0	0.00754346686406393			
[s] Observation start time (MET)	151751026.184000	151750040.92912			
Observation start date	2002-10-23T09:02:42	2002-10-23T08:47:20			
[s] Observation end time (MET)	151792426.184000	151792990.9934			
Observation end date	2002-10-23T20:32:42	2002-10-23T20:43:10			
Read mode	TIMED	TIMED			

2.3 Aspect



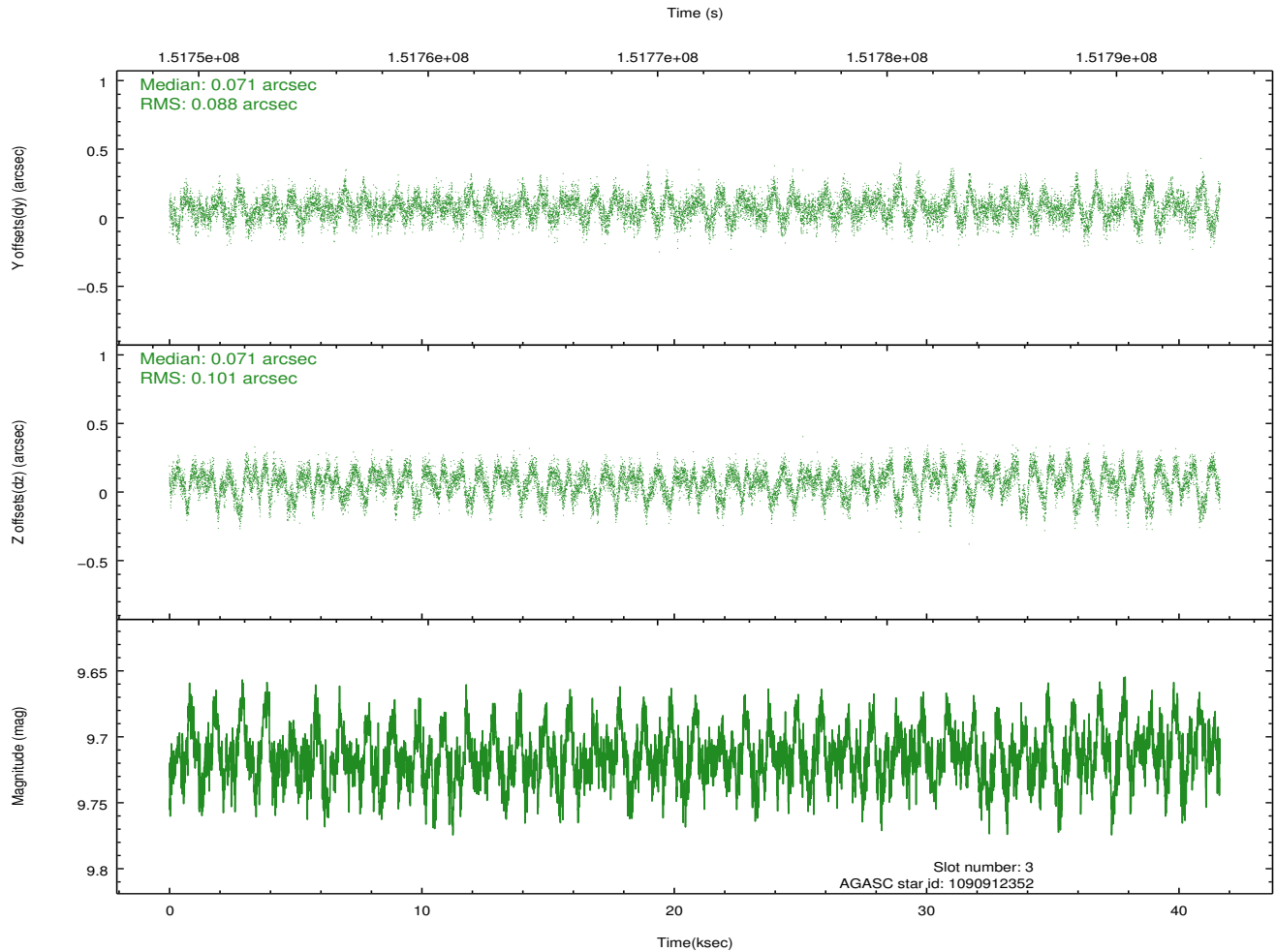
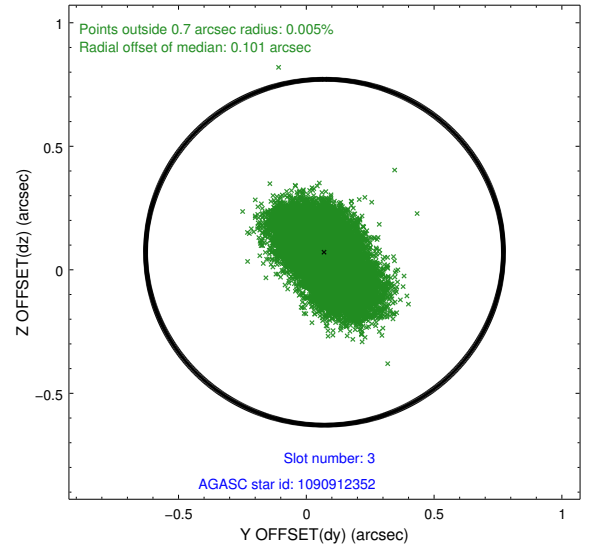
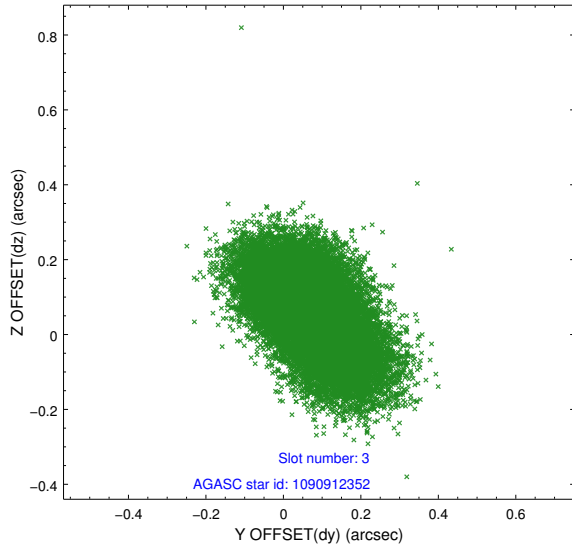


Slot Statistics

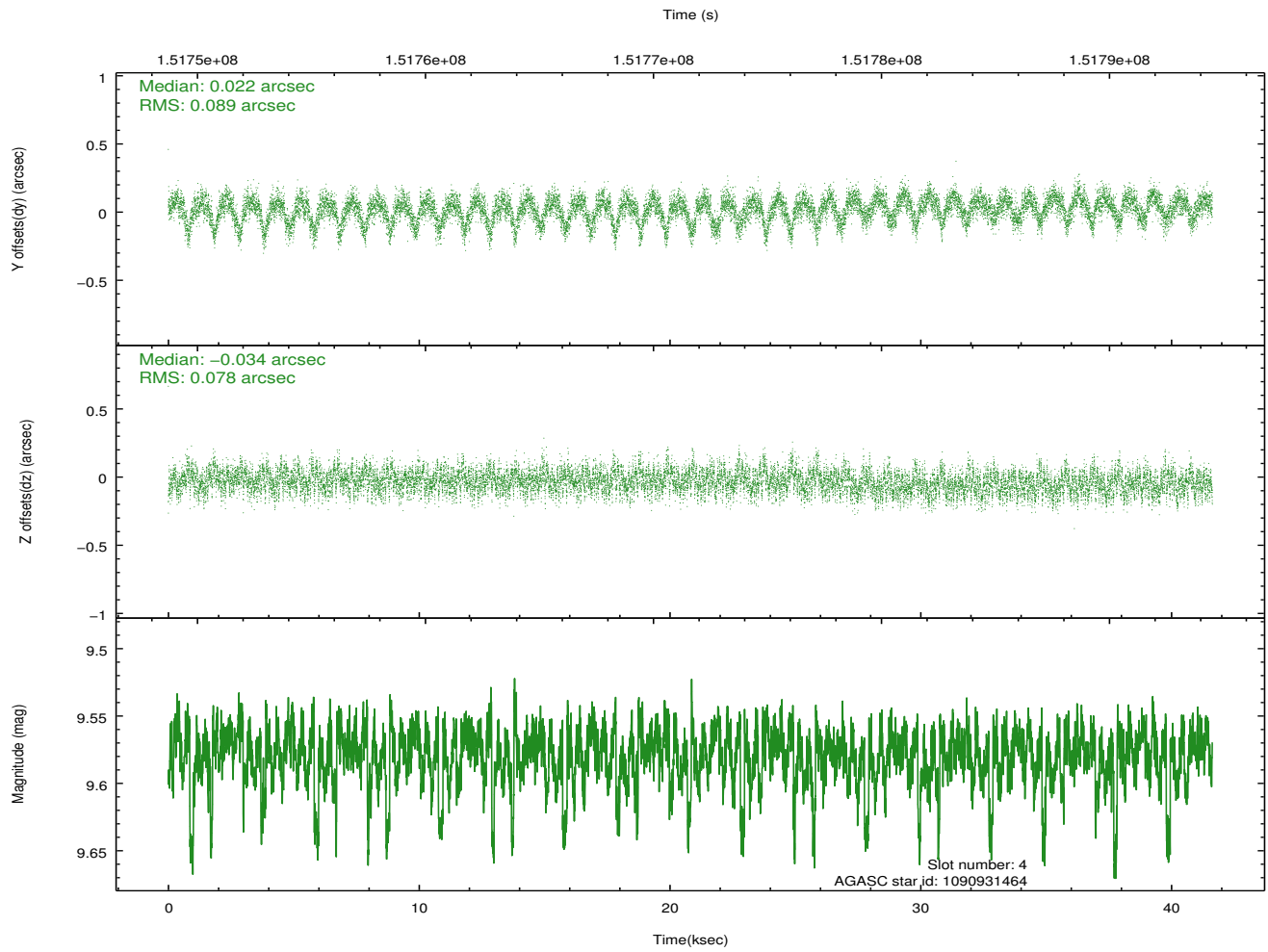
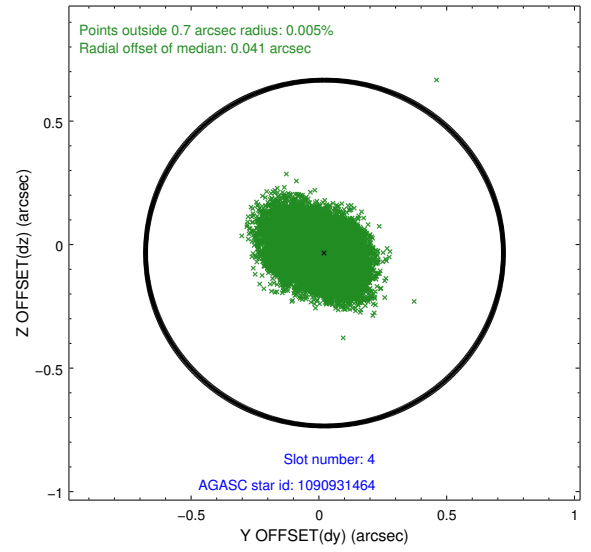
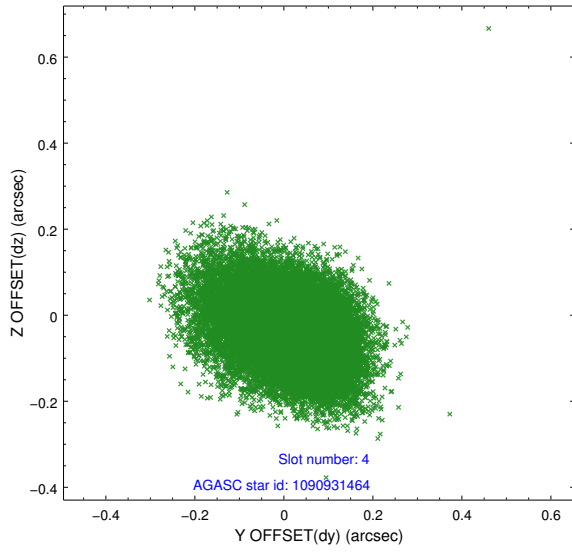
slot	status	id	mag	n_pts	med_dy	med_dz	dr1	dr2	ra	dec	mean_y	mean_z
0	FID	ACIS-S-2	7.10	10154	-0.018	-0.008	0.016	0.024	0.000000	0.000000	-755.14	-1729.70
1	FID	ACIS-S-4	7.20	10153	-0.017	0.010	0.017	0.027	0.000000	0.000000	2158.14	178.79
2	FID	ACIS-S-5	7.24	10151	0.002	0.006	0.008	0.016	0.000000	0.000000	-1807.95	172.47
3	GUIDE	1090912352	9.71	20289	0.071	0.071	0.140	0.238	244.175605	-52.468334	1553.17	970.93
4	GUIDE	1090931464	9.58	20233	0.022	-0.034	0.123	0.208	243.225969	-52.153895	2065.07	-1350.38
5	GUIDE	1090931608	9.33	20296	0.138	-0.142	0.129	0.200	243.085233	-52.161901	2291.98	-1565.10
6	GUIDE	1091058680	7.99	20307	-0.080	-0.043	0.057	0.093	245.262994	-51.916364	-1512.25	1528.00
7	GUIDE	1091053672	9.67	20299	-0.139	0.149	0.125	0.214	245.623467	-51.852552	-2199.30	2000.34

2.4 Star Slots

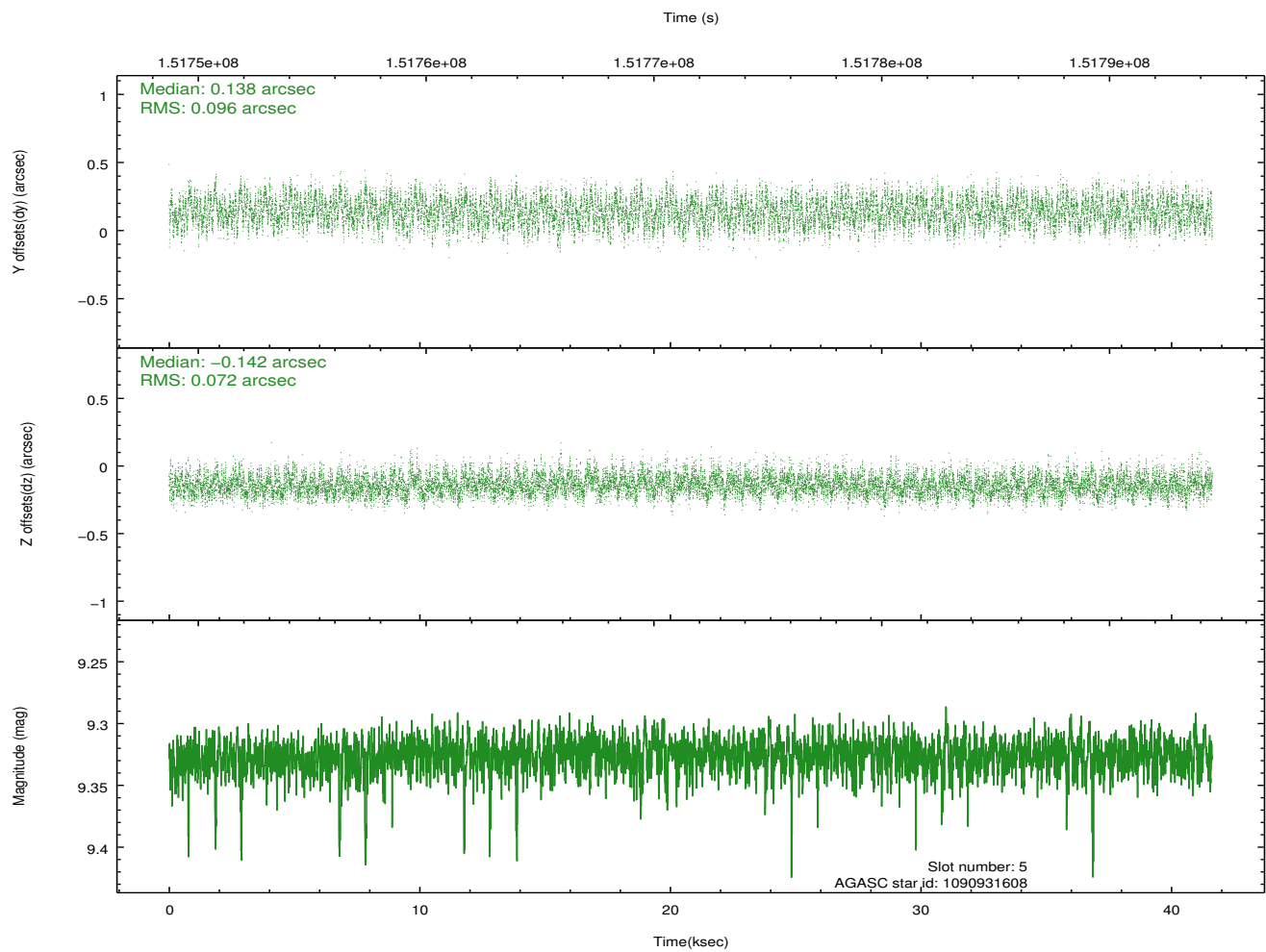
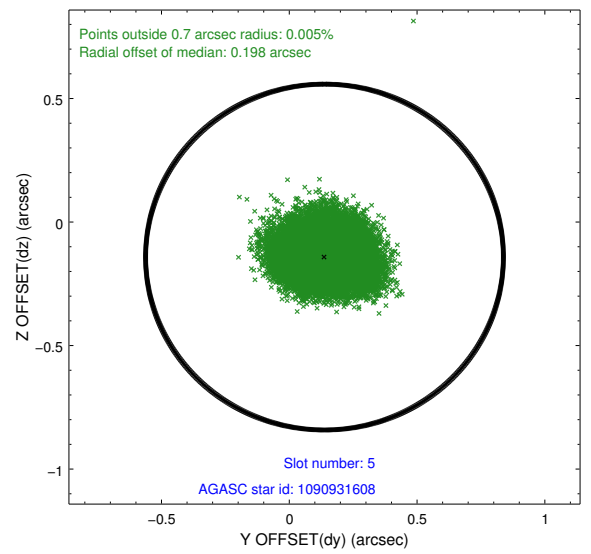
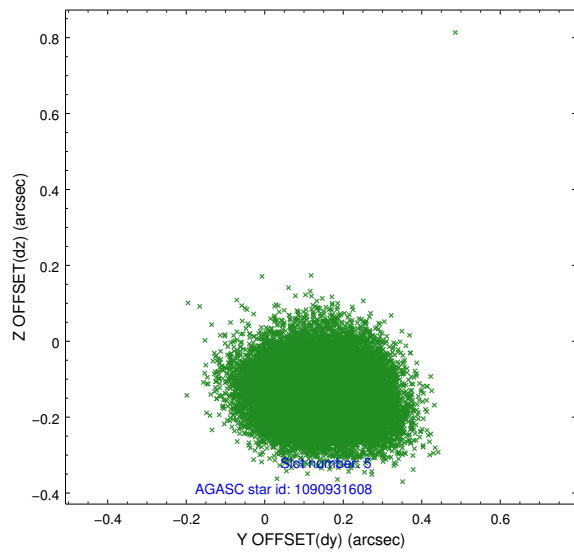
2.4.1 Slot 3



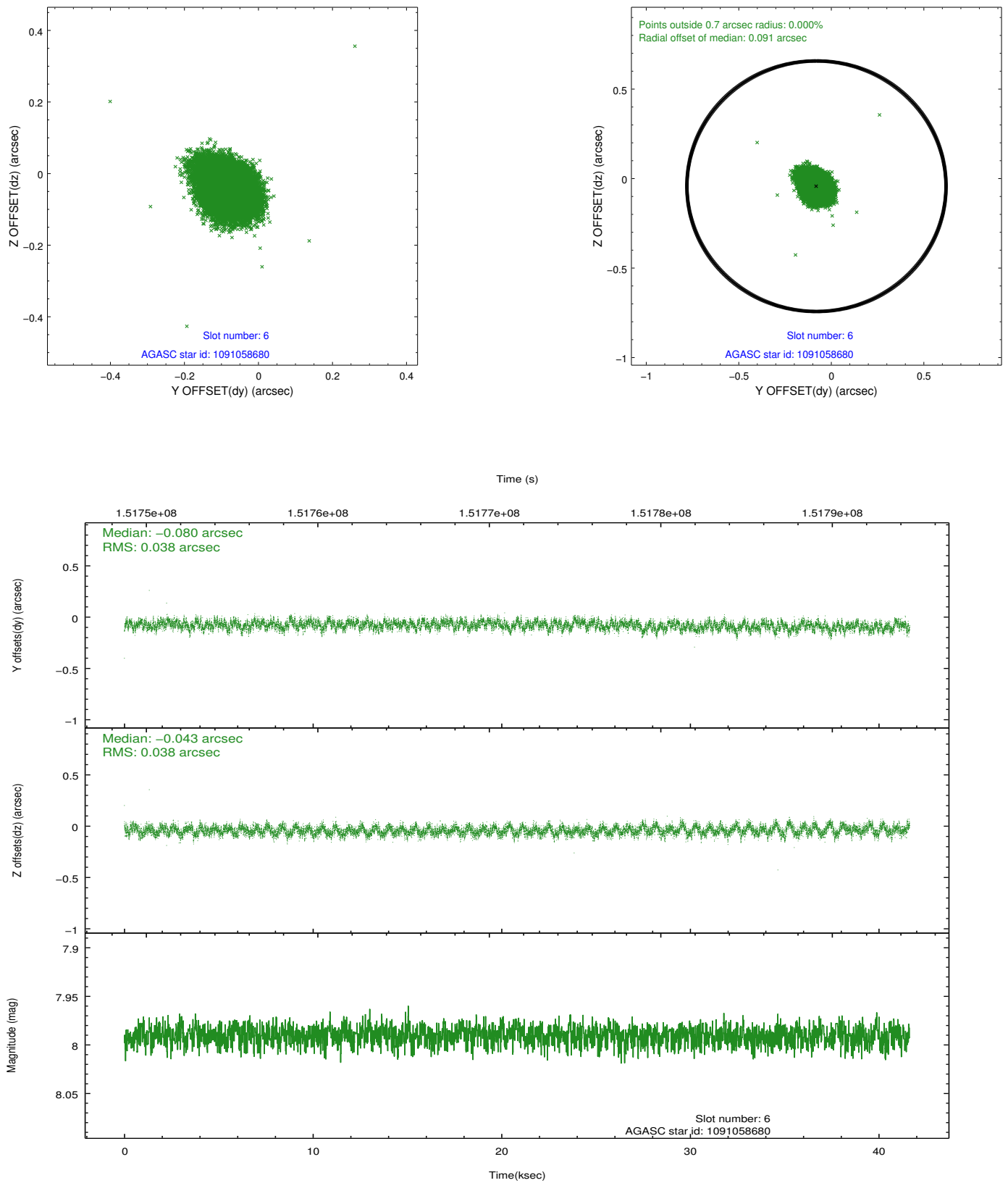
2.4.2 Slot 4



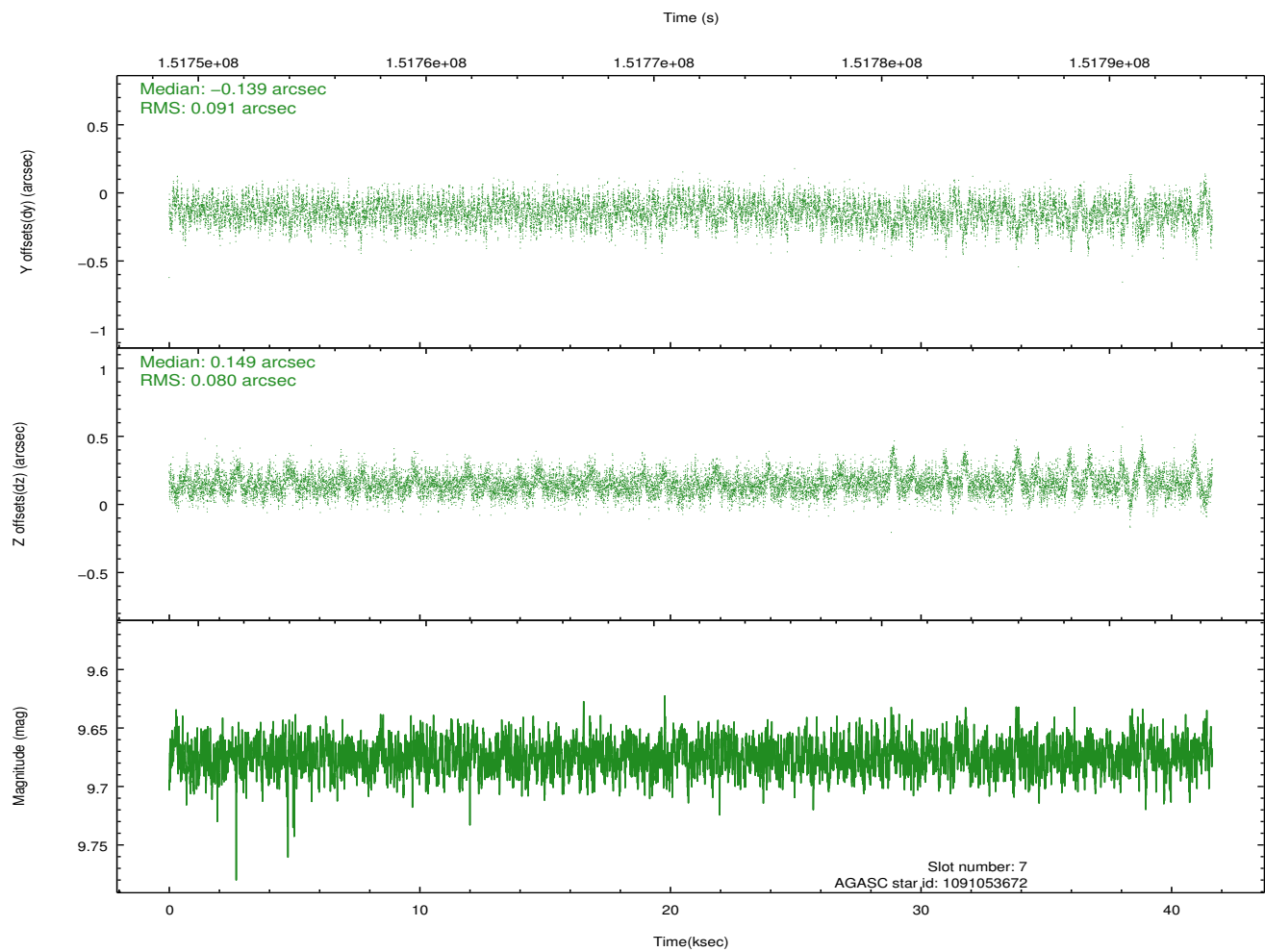
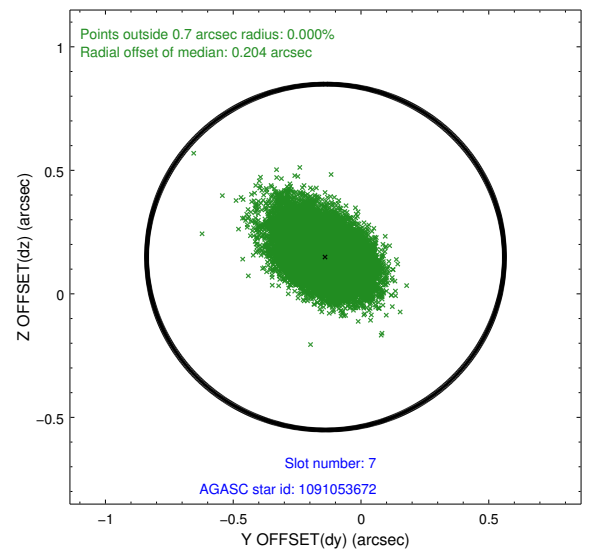
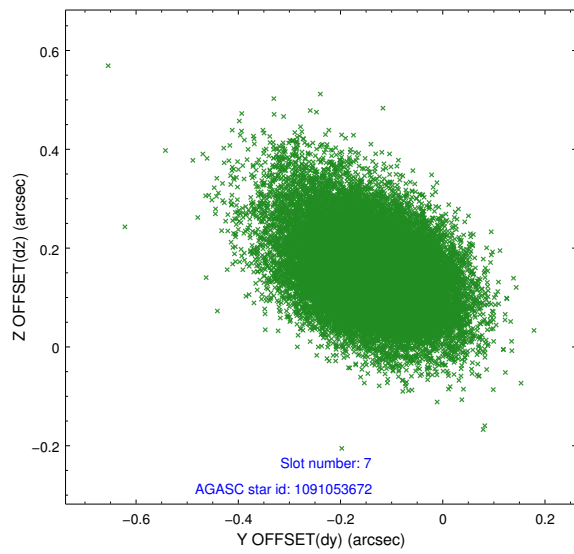
2.4.3 Slot 5



2.4.4 Slot 6

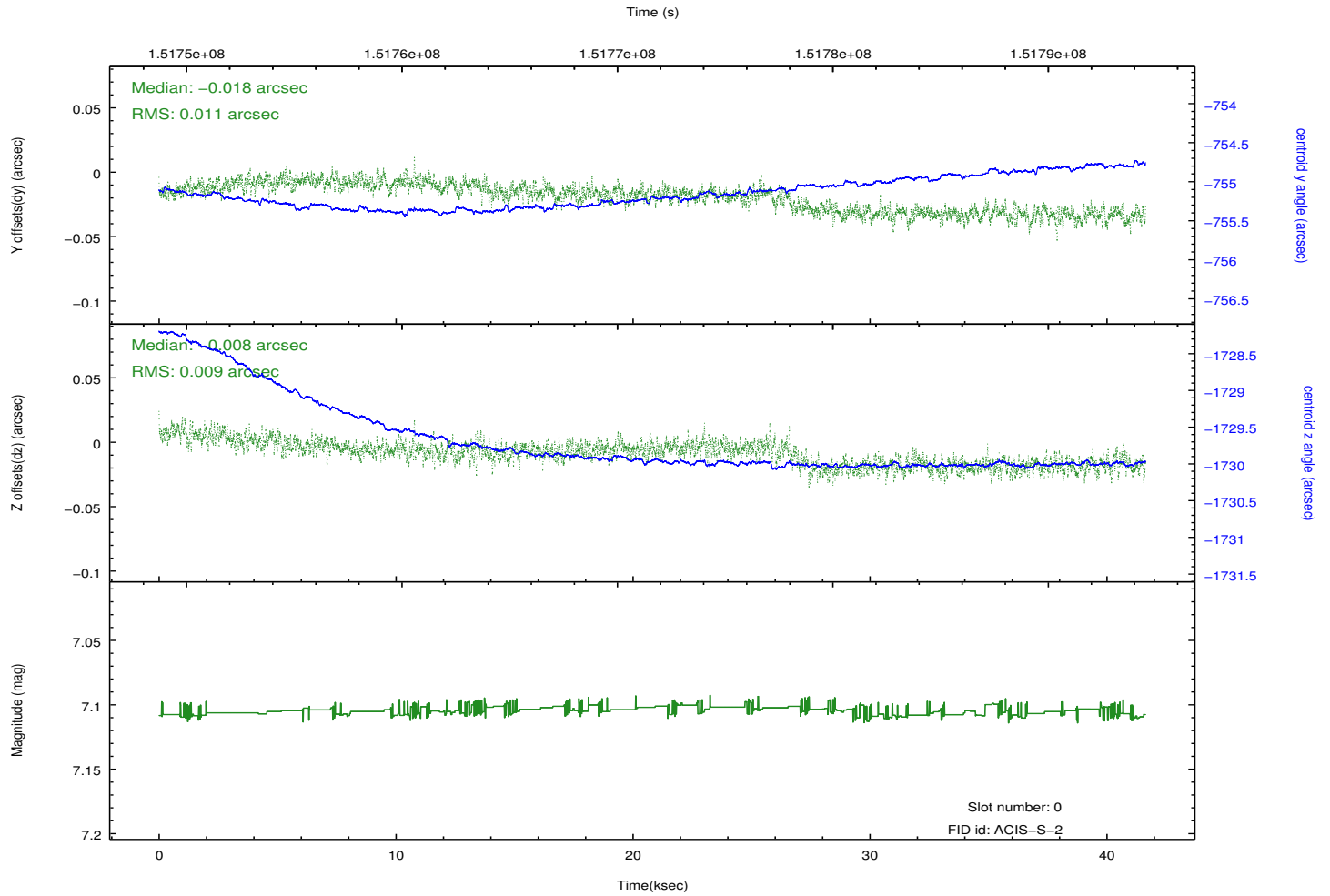
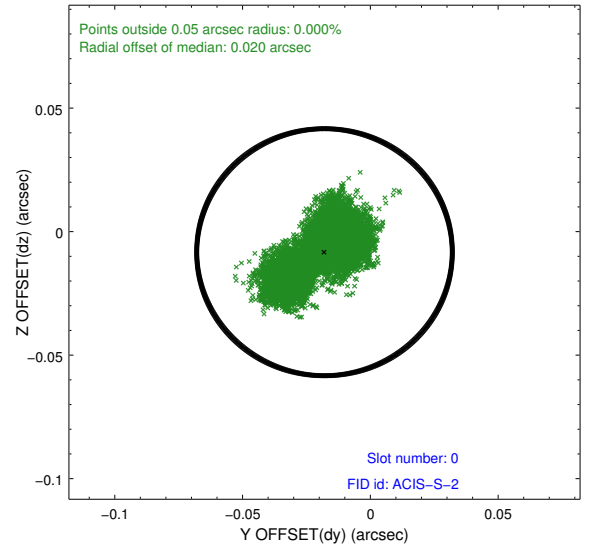
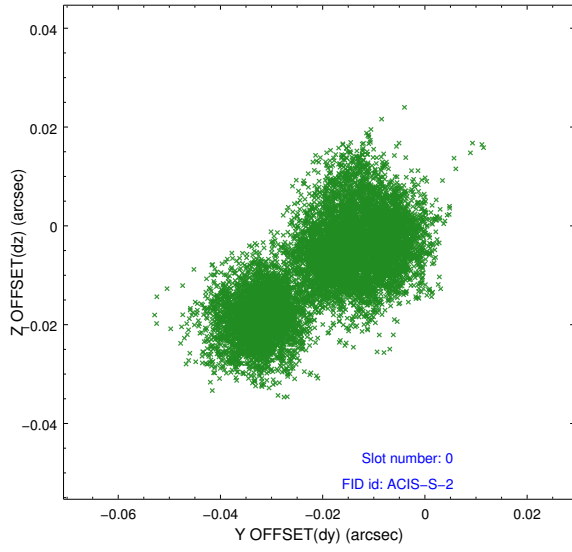


2.4.5 Slot 7

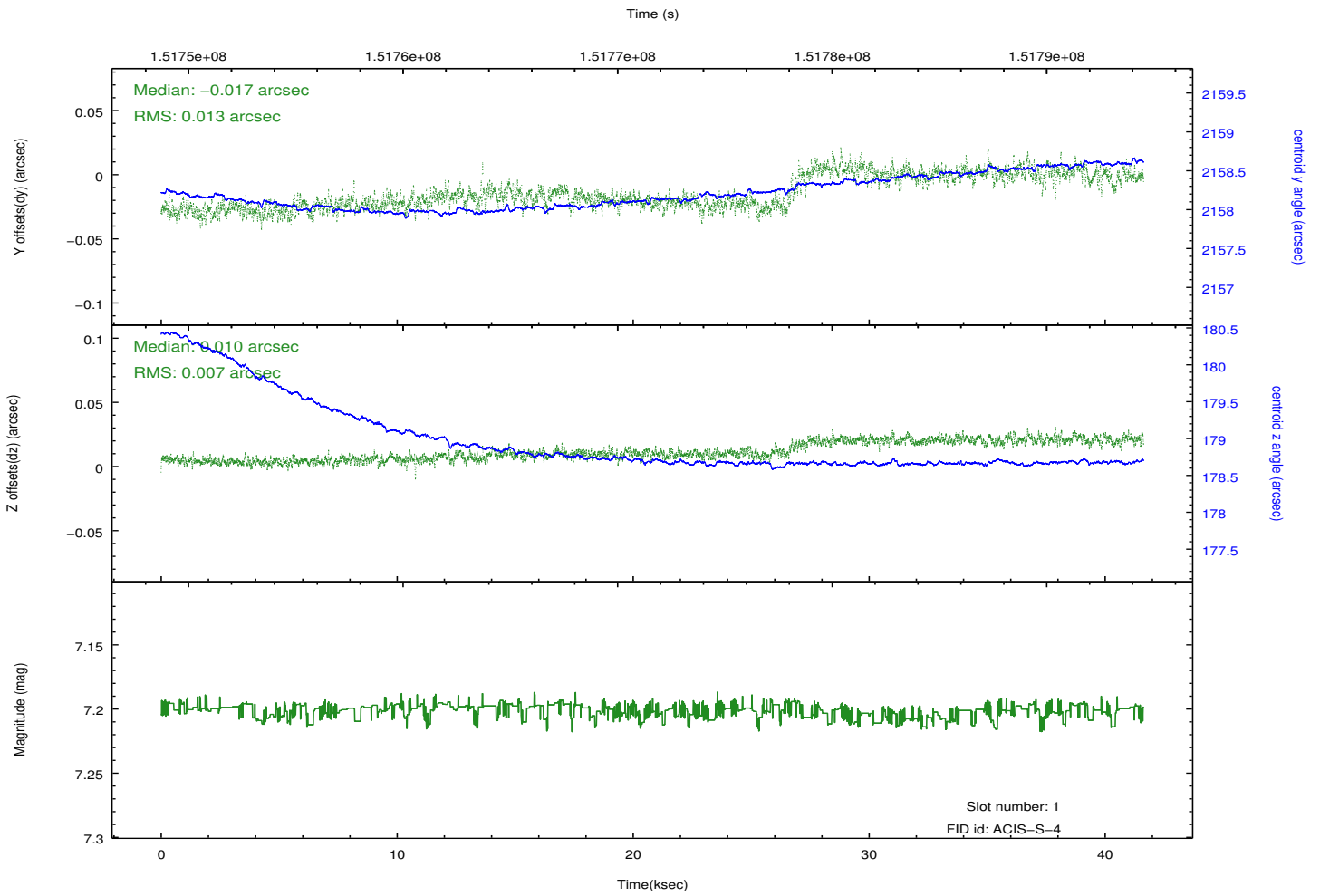
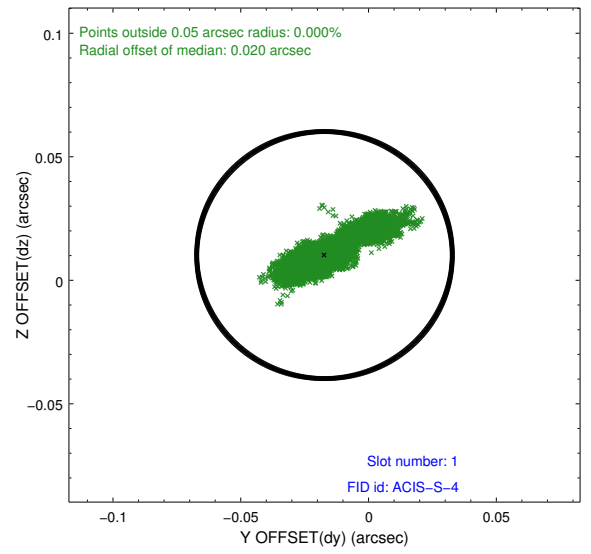
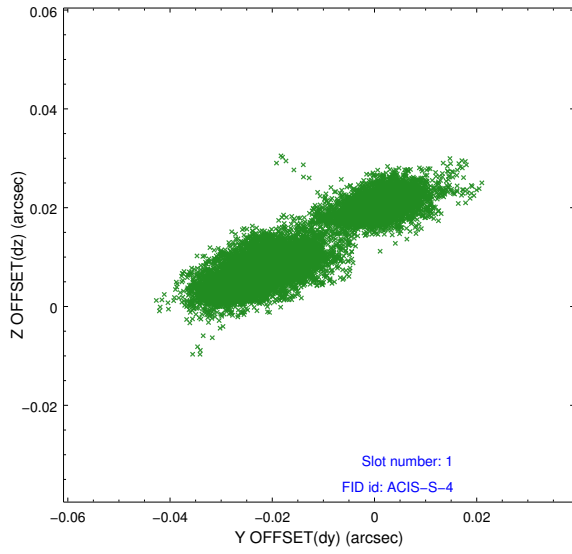


2.5 FID Slots

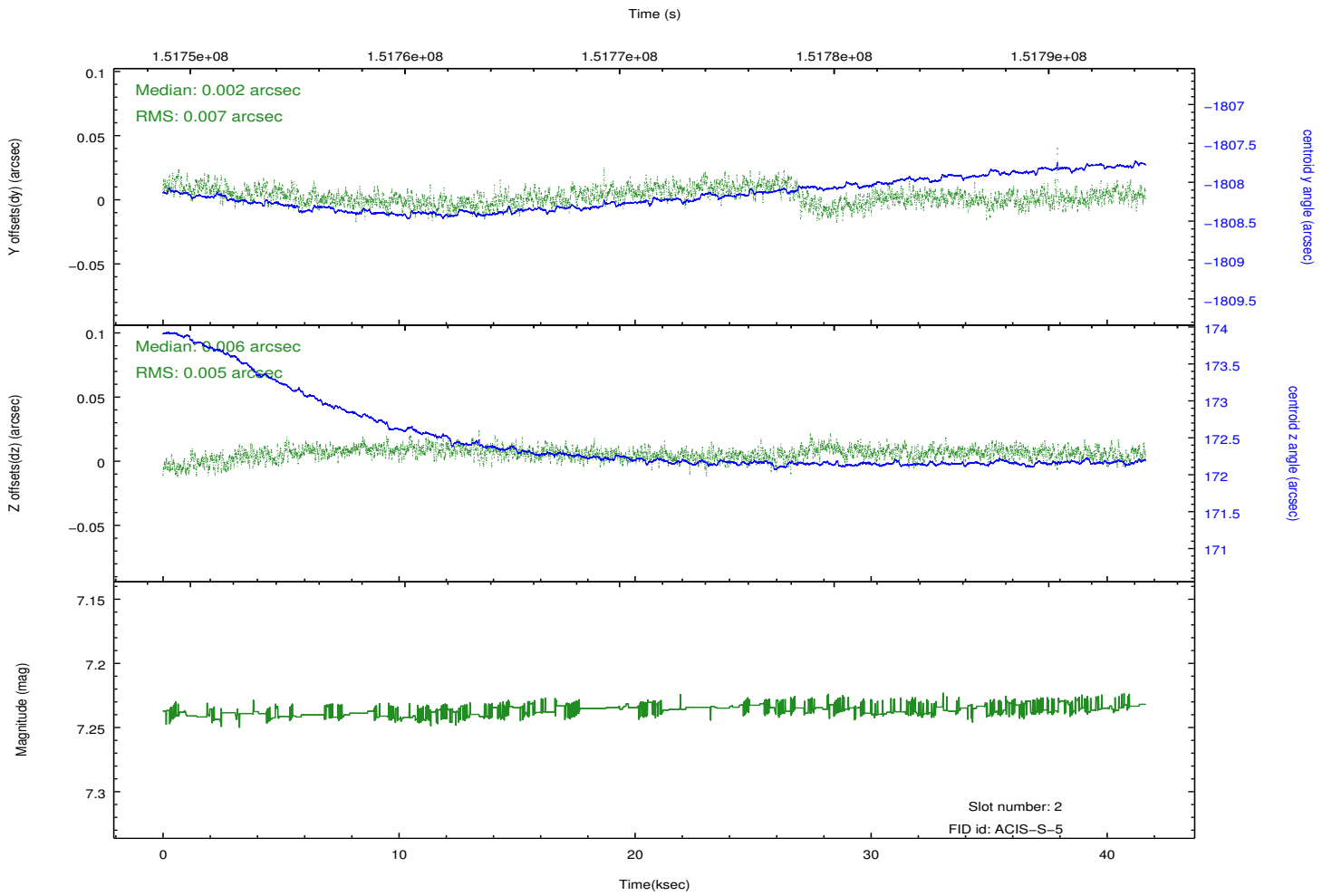
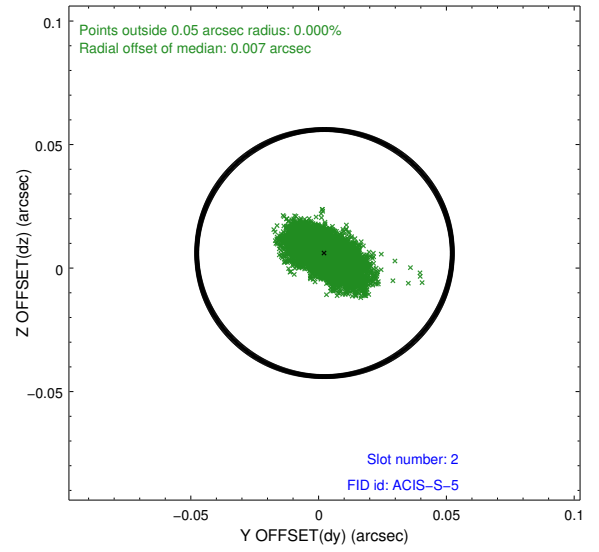
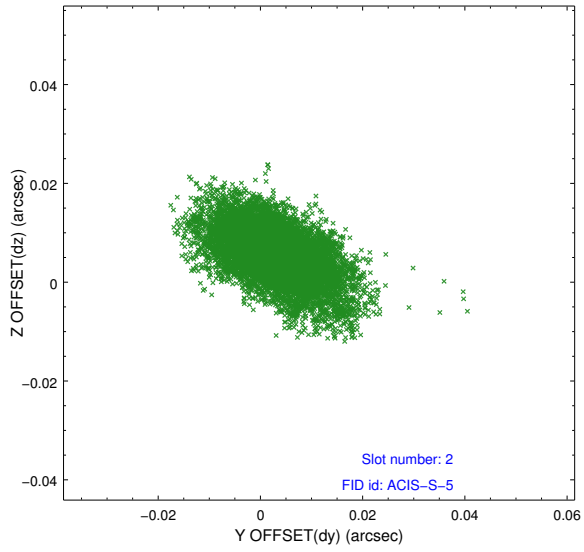
2.5.1 Slot 0



2.5.2 Slot 1



2.5.3 Slot 2



A Summary

A.1 Status

V&V Scientist	Jen Lauer
V&V Date (YYYY-MM-DD)	2012.10.25
V&V Edition	1
V&V Disposition and Status	OK
V&V Charge Time	41.356

A.2 Comments