

V&V Reference Report

L2 ASCDS Version : 8.4.5

Observation 2676 - L2 Version 3
Chandra X-Ray Center

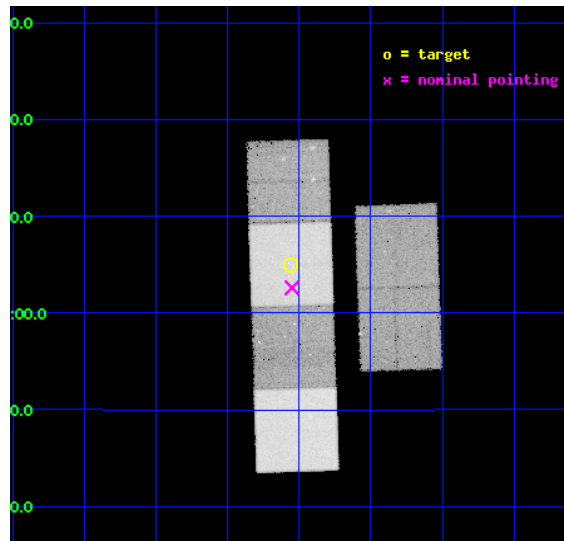
L2 Processing Date : Oct 14 2012

Contents

1	Front	2
2	OBI	3
2.1	OBI	3
2.1.1	Images	3
2.1.2	Bias	3
2.1.3	Parameters	4
2.1.4	Events	4
2.2	Compared Parameters	5
2.3	Aspect	6
2.4	Star Slots	9
2.4.1	Slot 3	9
2.4.2	Slot 4	10
2.4.3	Slot 5	11
2.4.4	Slot 6	12
2.4.5	Slot 7	13
2.5	FID Slots	14
2.5.1	Slot 0	14
2.5.2	Slot 1	15
2.5.3	Slot 2	16
A	Summary	17
A.1	Status	17
A.2	Comments	17

1 Front

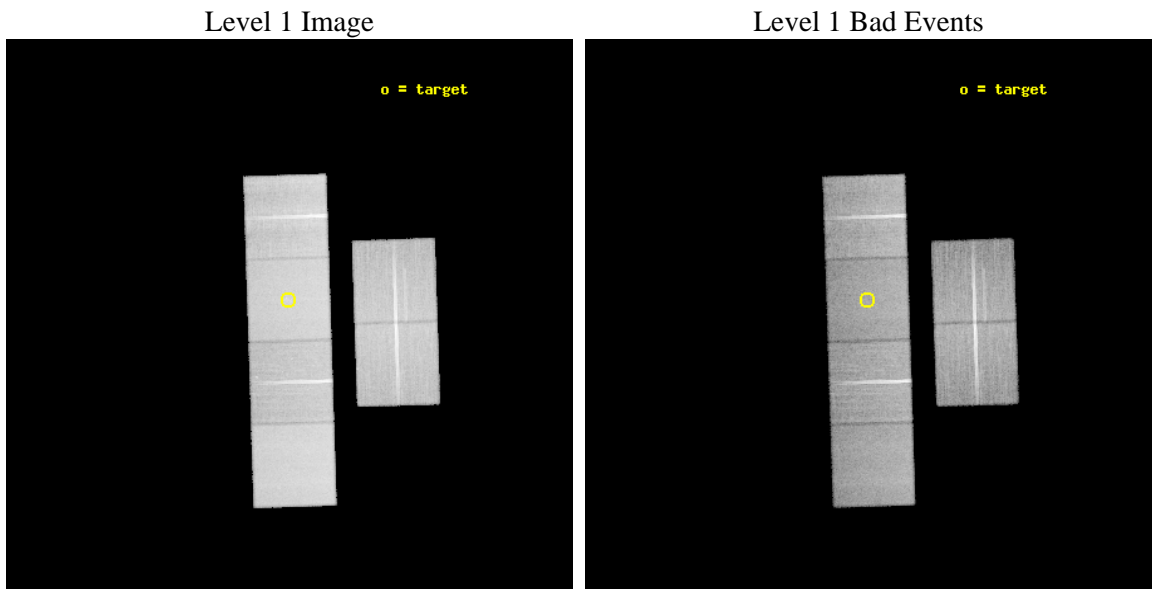
seq_num	300077	Sequence number
obs_id	2676	Observation id
title	A UNIFORM STUDY OF GLOBULAR CLUSTER X--RAY SOURCES: THE KEYS TO CLUSTER DYNAMICAL EVOLUTION	Proposal title
observer	Prof. Walter Lewin	Principal investigator
object	NGC 5904	Source name
dtcycle	0	
cycle	P	events from which exps? Prim/Second/Both
ra_targ	229.640833	Observer's specified target RA [deg]
dec_targ	2.082694	Observer's specified target Dec [deg]
ra_nom	229.63776998089	Nominal RA [deg]
dec_nom	2.0432074326494	Nominal Dec [deg]
roll_nom	268.15674044492	Nominal Roll [deg]
revision	3	Processing version of data
ontime	45228.79983151	Sum of GTIs [s]
livetime	44656.085534529	Livetime [s]
ontime2	45228.79983151	Sum of GTIs [s]
ontime3	45225.558950961	Sum of GTIs [s]
ontime5	45228.79983151	Sum of GTIs [s]
ontime6	45228.79983151	Sum of GTIs [s]
ontime7	45228.79983151	Sum of GTIs [s]
ontime8	45228.79983151	Sum of GTIs [s]
l2events	449860	Number of level 2 events



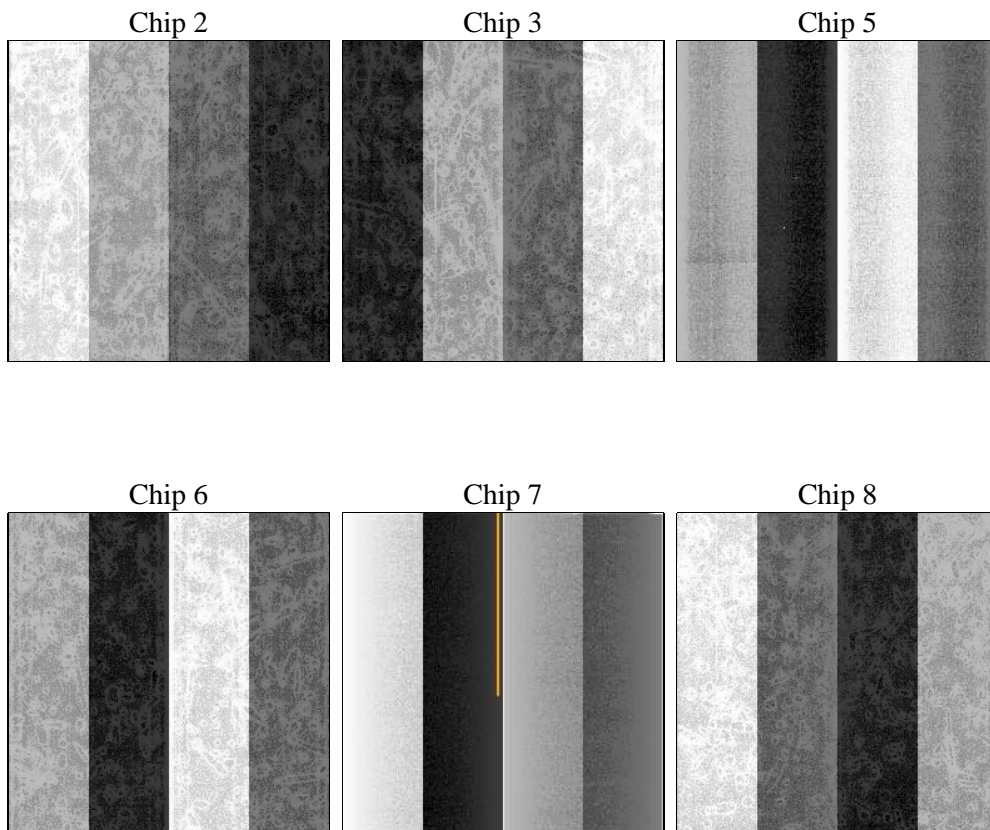
2 OBI

2.1 OBI

2.1.1 Images



2.1.2 Bias



2.1.3 Parameters

obi_num	0	Obi number	sched_exp_time	45270.000000	[s] Scheduled observation exposure time
ascdsver	8.4.5	Processing system revision	ontime	45228.79983151	Sum of GTIs [s]
caldbver	4.5.2	 	ontime2	45228.79983151	Sum of GTIs [s]
date	2012-10-14T20:49:36	Date and time of file creation	ontime3	45225.558950961	Sum of GTIs [s]
revision	3	Processing version of data	ontime5	45228.79983151	Sum of GTIs [s]
			ontime6	45228.79983151	Sum of GTIs [s]
			ontime7	45228.79983151	Sum of GTIs [s]
			ontime8	45228.79983151	Sum of GTIs [s]
			l1events	1963434	Number of level 1 events

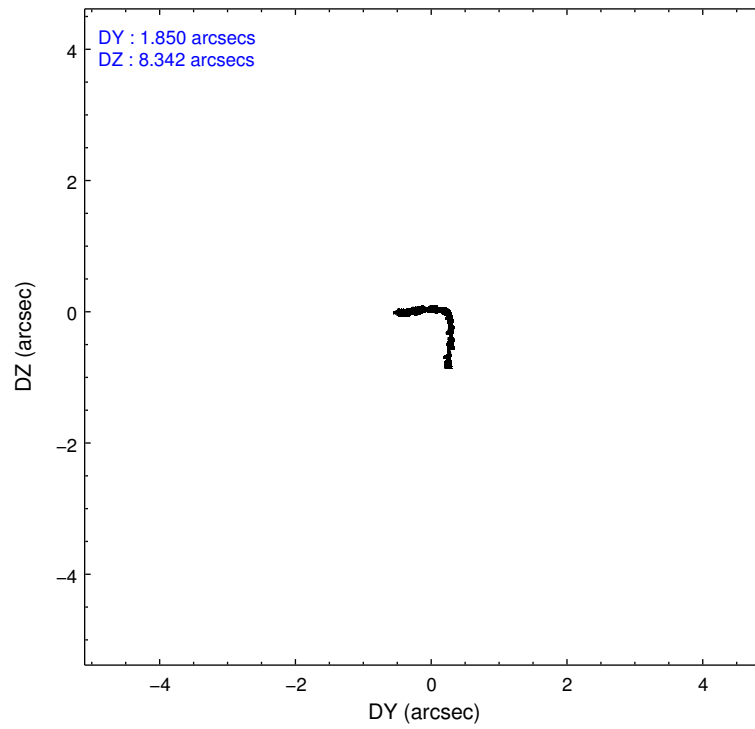
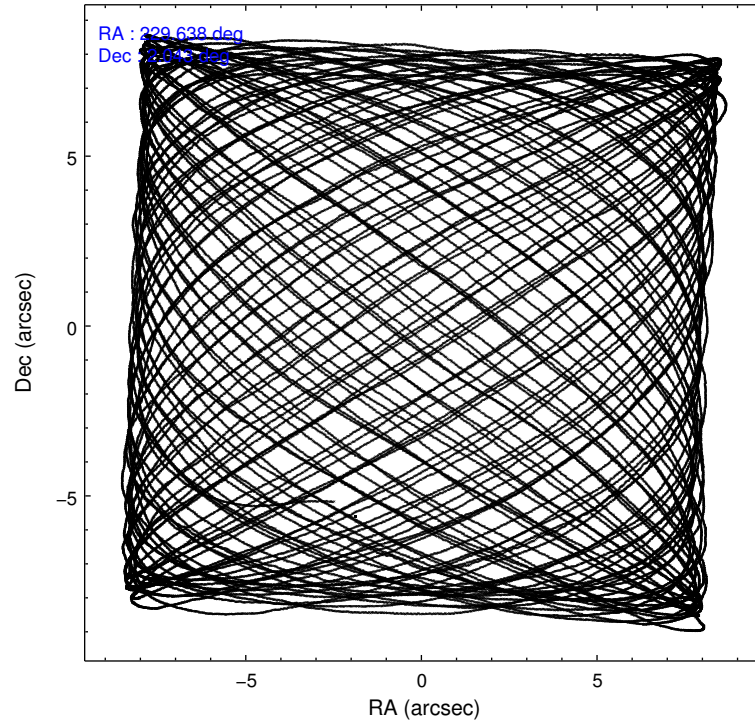
2.1.4 Events

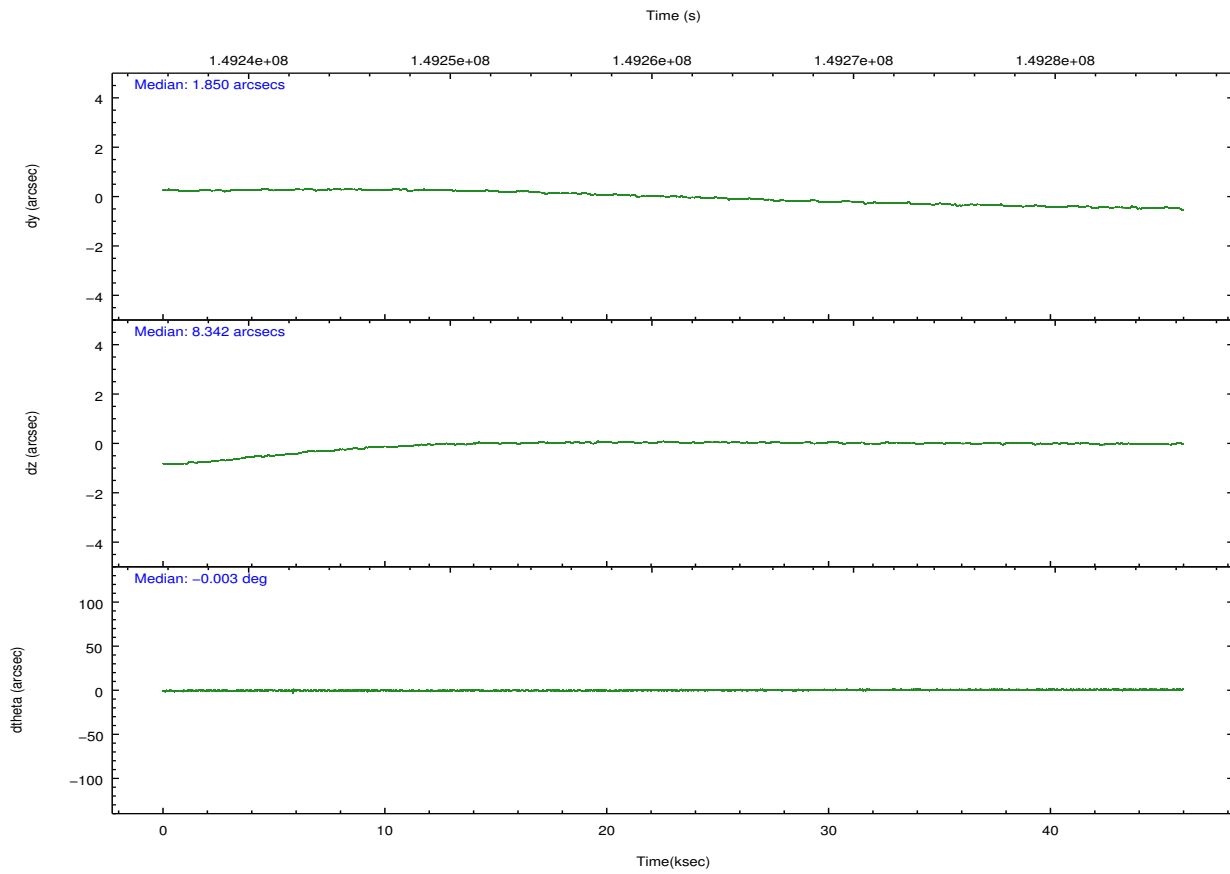
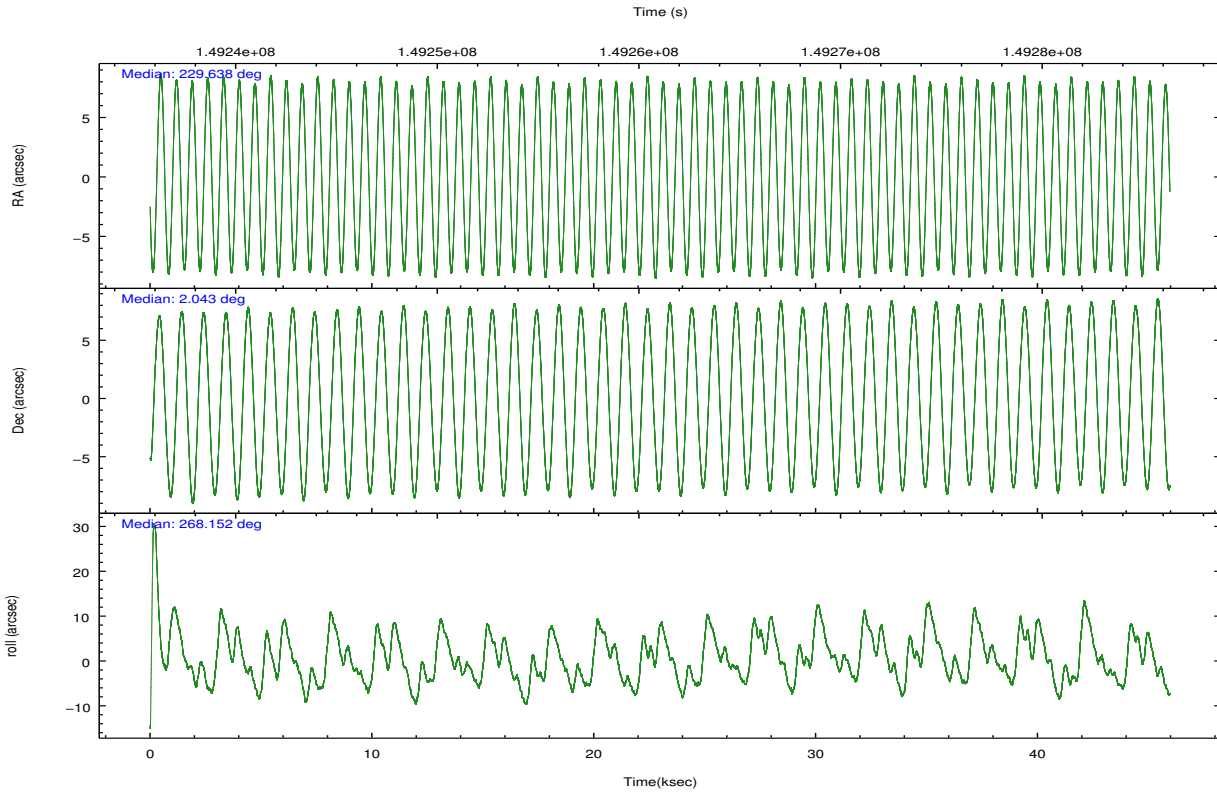
	ccd 2	ccd 3	ccd 5	ccd 6	ccd 7	ccd 8		ccd 2	ccd 3	ccd 5	ccd 6	ccd 7	ccd 8
level 1 events	284848	272904	398473	281802	372840	352567	grade 0 events	15205	14086	13278	14205	15667	24371
rejected events	251366	241195	218668	247732	216298	279333		5%	5%	3%	5%	4%	6%
rejected %	88%	88%	54%	87%	58%	79%	grade 1 events	183	147	457	139	329	249
								0%	0%	0%	0%	0%	0%
							grade 2 events	6583	5951	53664	6795	30983	15362
								2%	2%	13%	2%	8%	4%
							grade 3 events	3216	3138	7924	3269	14071	7679
								1%	1%	1%	1%	3%	2%
							grade 4 events	3133	3157	7697	3282	14264	7303
								1%	1%	1%	1%	3%	2%
							grade 5 events	10679	11621	29758	12397	35488	15951
								3%	4%	7%	4%	9%	4%
							grade 6 events	5349	5379	97254	6520	81563	18522
								1%	1%	24%	2%	21%	5%
							grade 7 events	240500	229425	188441	235195	180475	263130
								84%	84%	47%	83%	48%	74%

2.2 Compared Parameters

Parameter	Planned	Actual	Parameter	Planned	Actual
Instrument	ACIS	ACIS	Obspar format version number	7	7
Detector	ACIS-235678	ACIS-235678	Obspar file type	PREDICTED	ACTUAL
Grating	NONE	NONE	Obspar update status	NONE	UPDATED
Data mode	FAINT	FAINT	Number of optional ACIS chips dropped	0	0
Observation mode	POINTING	POINTING	On-chip summing requested	N	N
[deg] Pointing RA	229.624603	229.6377699808878	Subarray requested	NONE	NONE
[deg] Pointing Dec	2.067045	2.043207432649417	Alternating exposures requested	N	N
[deg] Pointing Roll	268.000585	268.1567404449211	[s] Primary exposure time	0.000000	3.2
[mm] SIM focus pos	-0.684267	-0.6828225247311905			
[mm] SIM defocus	0	0.001444936568705701			
[mm] SIM translation stage pos	-190.132523	-190.1400660498719			
[mm] SIM translation stage offset	0	0.00754346686406393			
[s] Observation start time (MET)	149238767.184000	149237546.47499			
Observation start date	2002-09-24T07:11:43	2002-09-24T06:52:26			
[s] Observation end time (MET)	149284037.184000	149284820.50195			
Observation end date	2002-09-24T19:46:13	2002-09-24T20:00:20			
Read mode	TIMED	TIMED			

2.3 Aspect



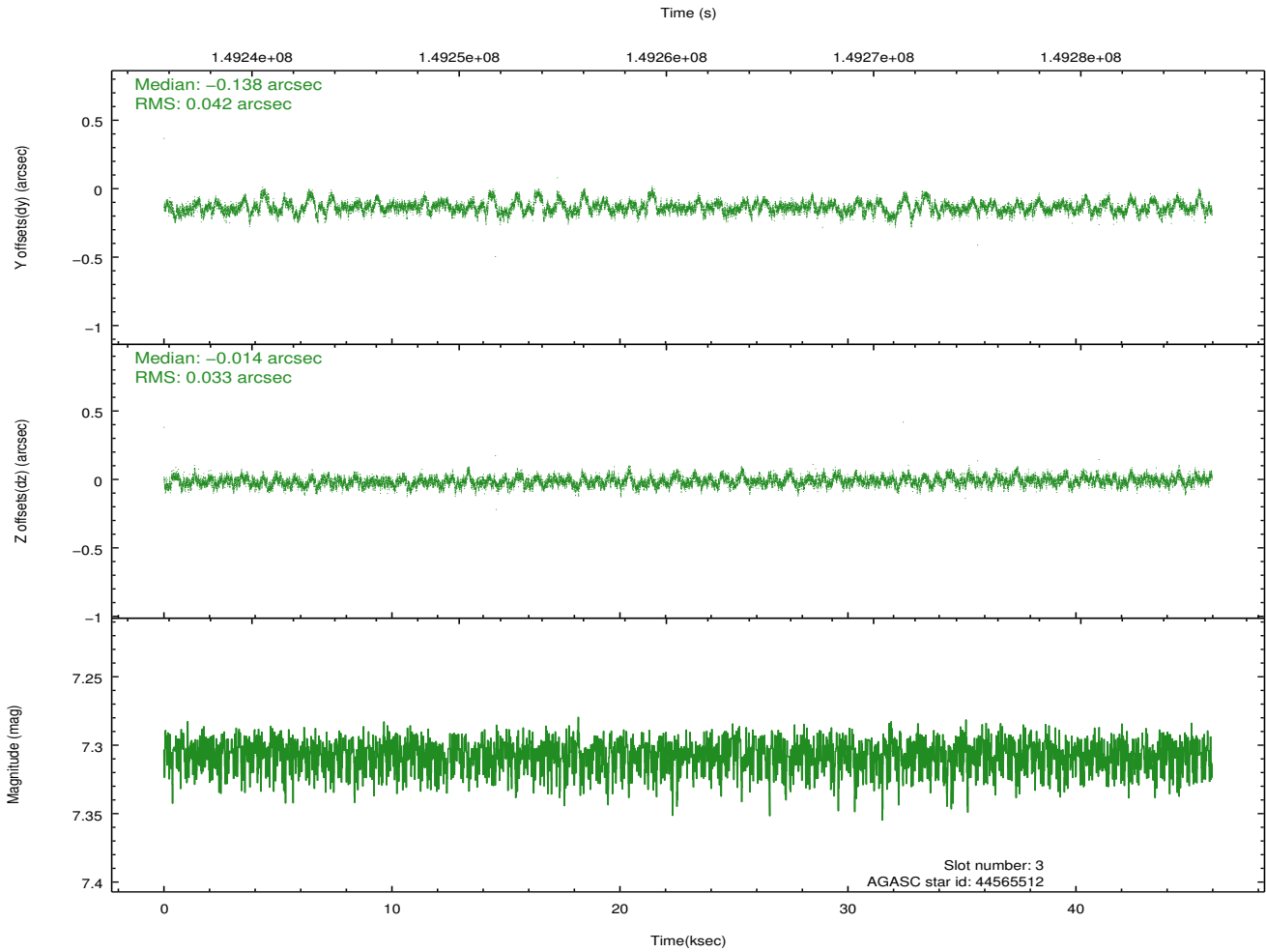
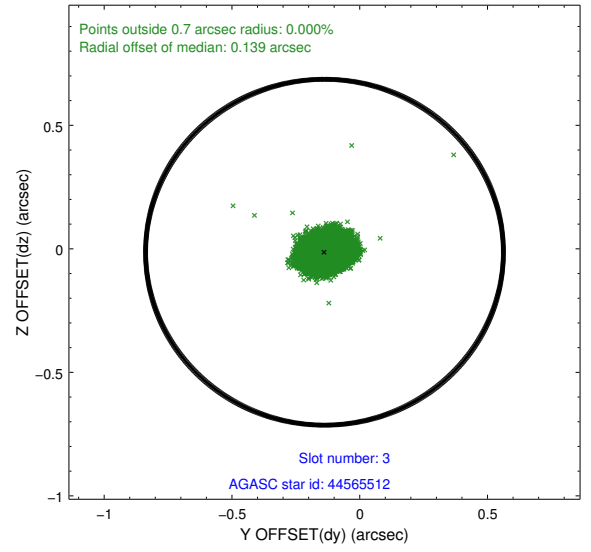
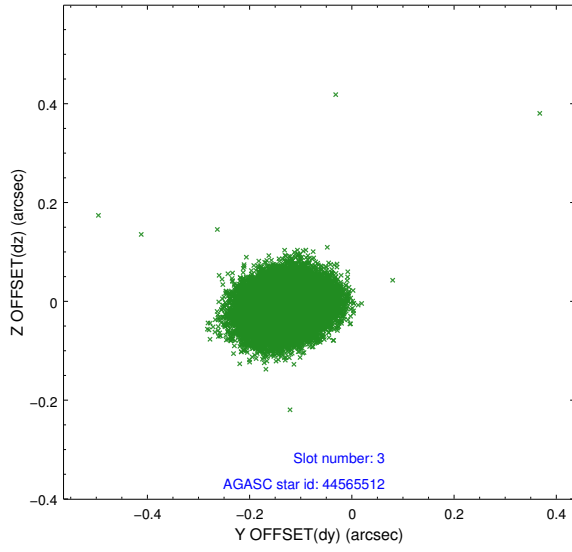


Slot Statistics

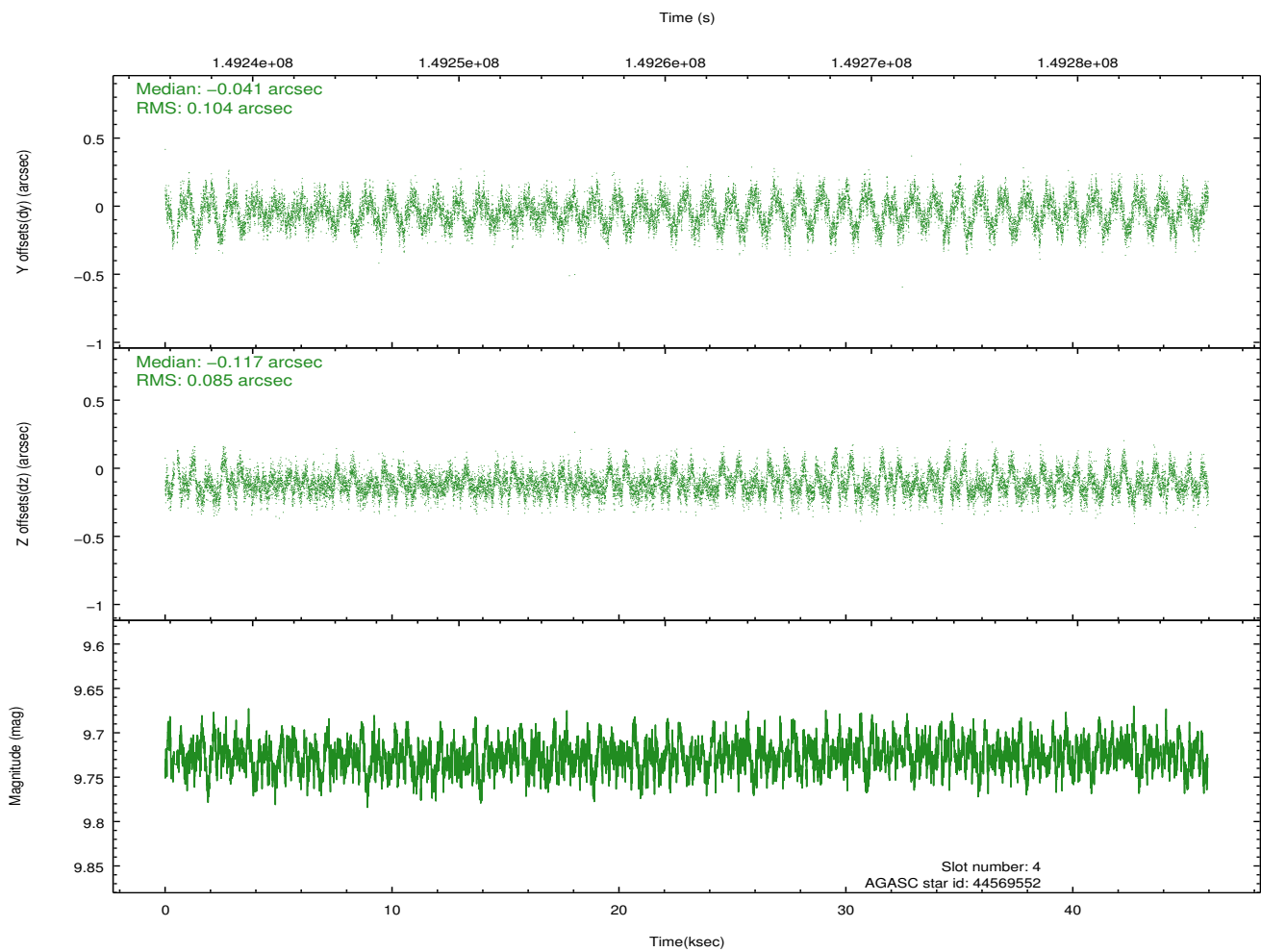
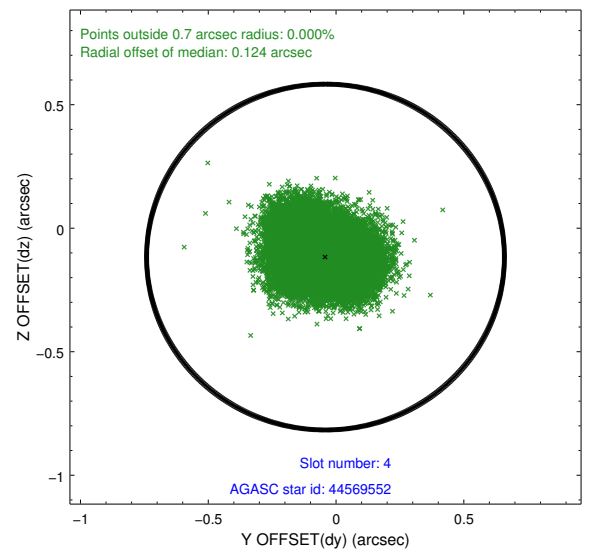
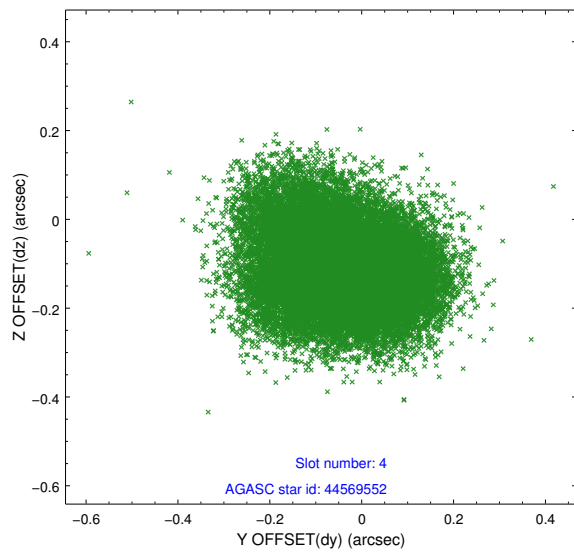
slot	status	id	mag	n_pts	med_dy	med_dz	dr1	dr2	ra	dec	mean_y	mean_z
0	FID	ACIS-S-2	6.89	11210	-0.025	0.002	0.008	0.012	0.000000	0.000000	-754.47	-1729.42
1	FID	ACIS-S-4	6.99	11209	-0.006	0.012	0.006	0.011	0.000000	0.000000	2158.85	179.03
2	FID	ACIS-S-5	6.98	11208	0.000	-0.005	0.008	0.014	0.000000	0.000000	-1807.27	172.74
3	GUIDE	44565512	7.31	22418	-0.138	-0.014	0.056	0.094	229.011245	2.167910	-286.48	-2216.95
4	GUIDE	44569552	9.73	22335	-0.041	-0.117	0.145	0.229	229.210400	2.709300	-2259.05	-1568.87
5	GUIDE	44041960	9.98	22395	0.253	0.219	0.128	0.203	230.227542	1.405463	2304.07	2253.10
6	GUIDE	44569160	9.31	22409	-0.097	-0.100	0.101	0.166	230.146173	2.118391	-250.80	1869.67
7	GUIDE	44565920	10.23	22398	0.022	0.008	0.176	0.299	229.874975	2.437916	-1366.05	854.32

2.4 Star Slots

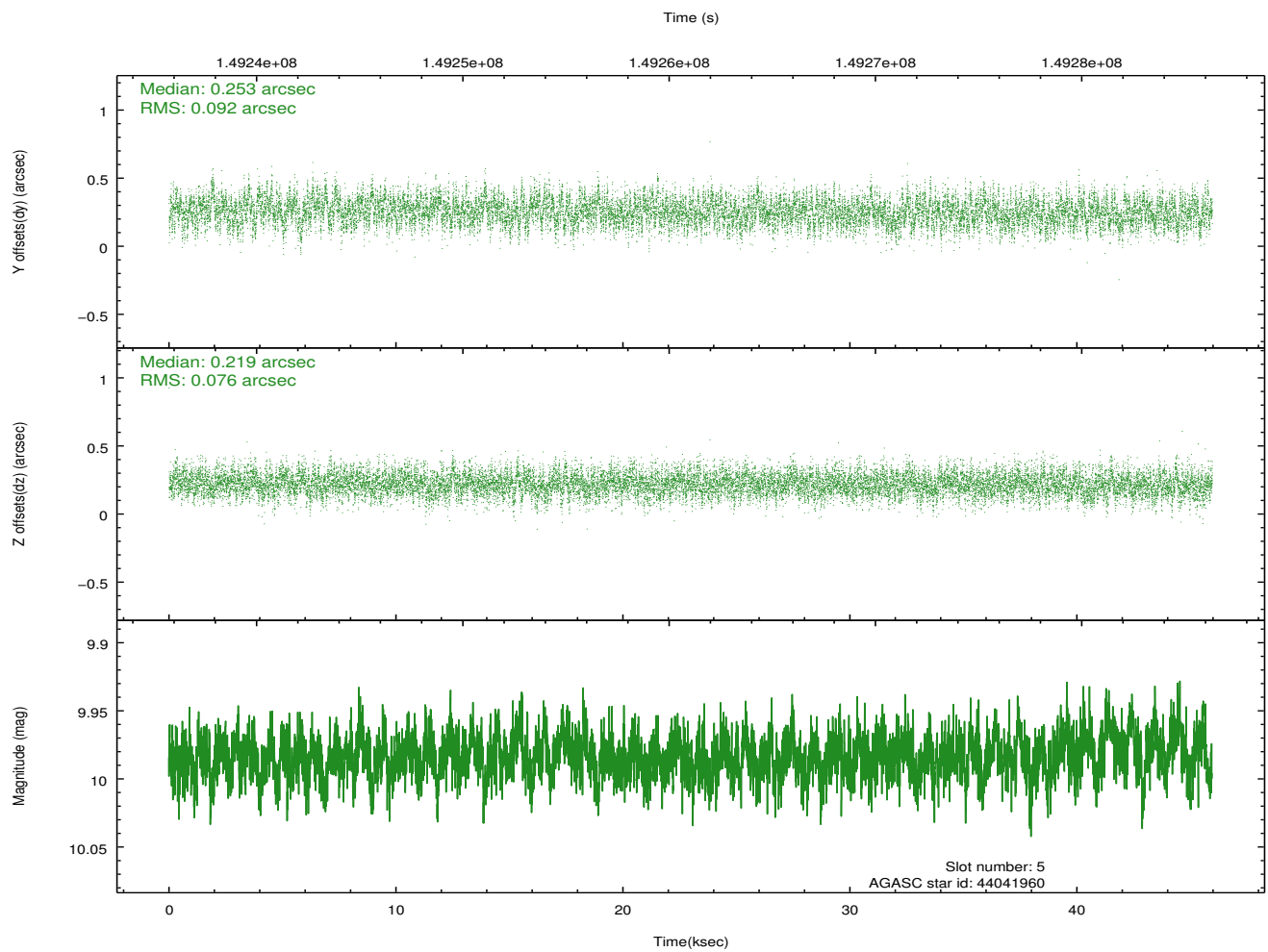
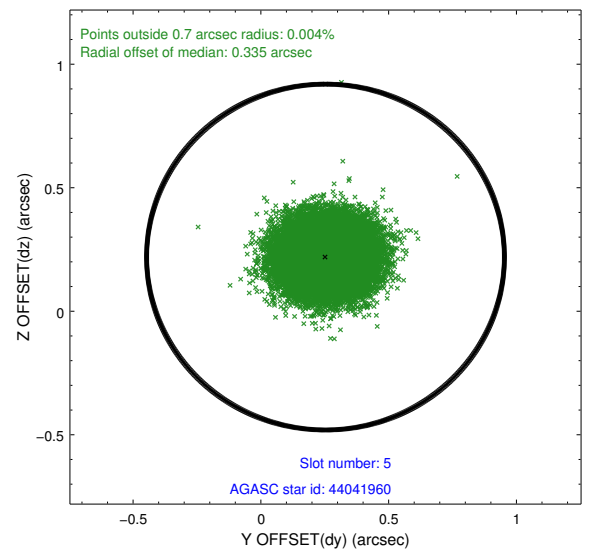
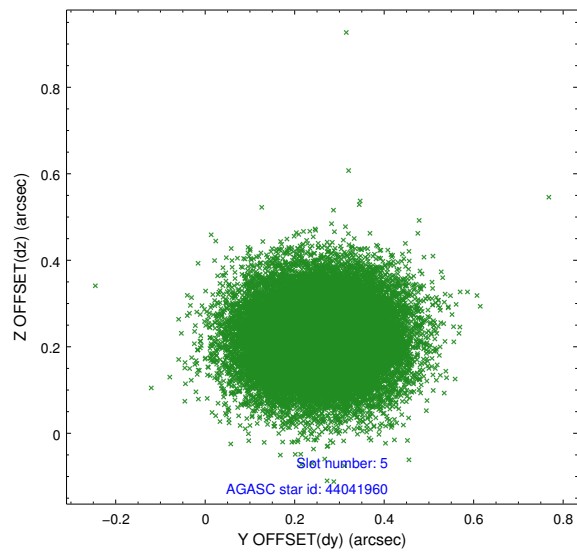
2.4.1 Slot 3



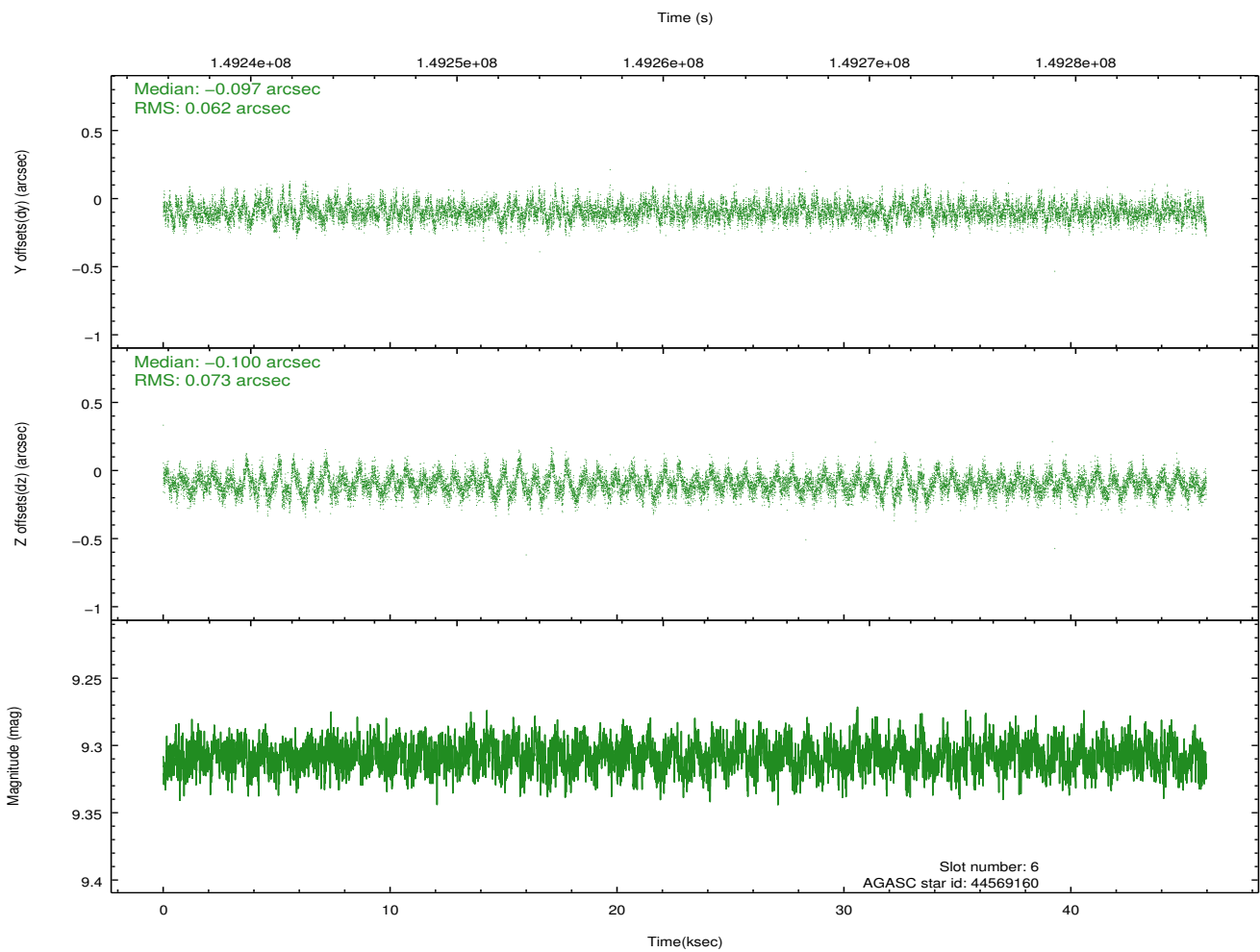
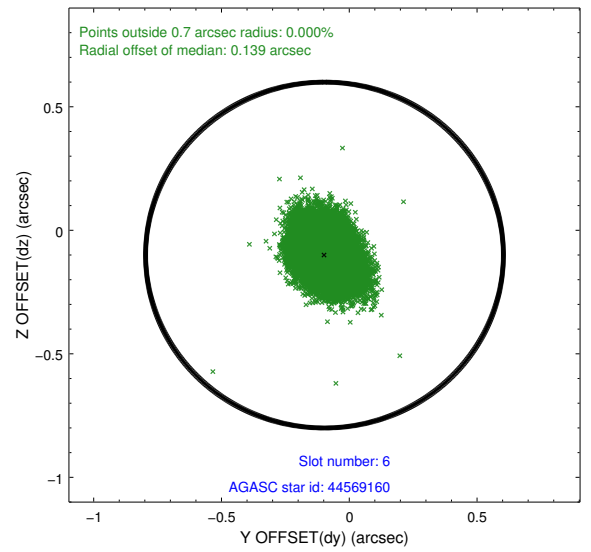
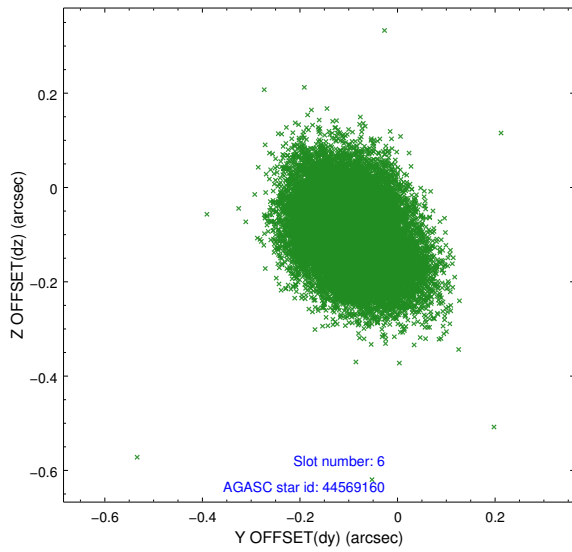
2.4.2 Slot 4



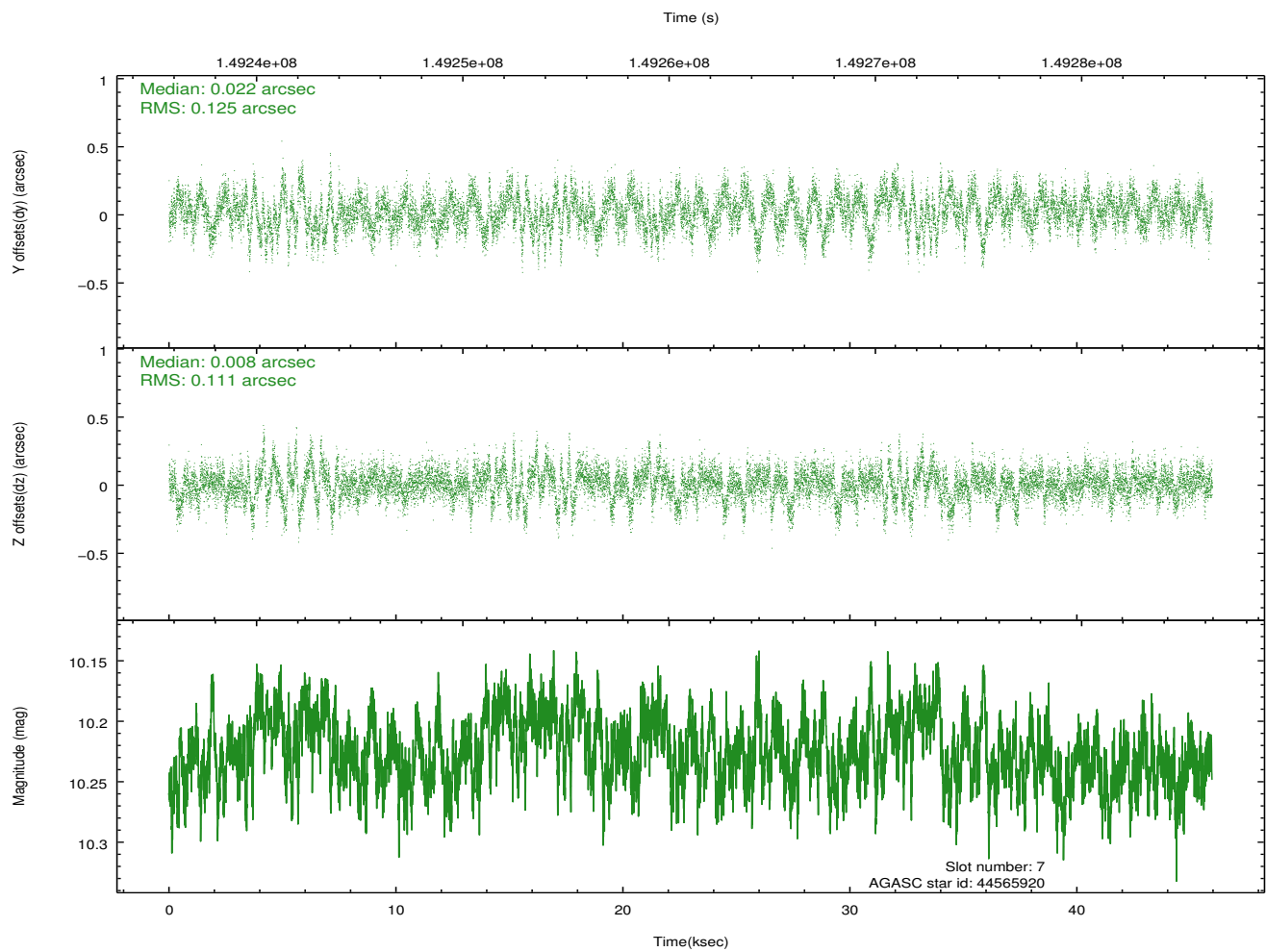
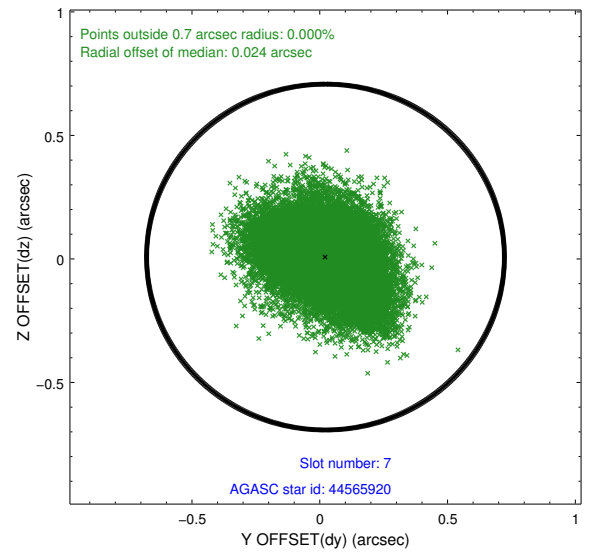
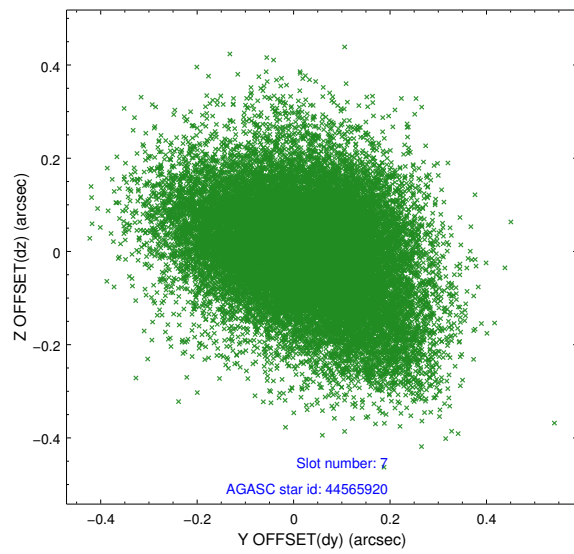
2.4.3 Slot 5



2.4.4 Slot 6

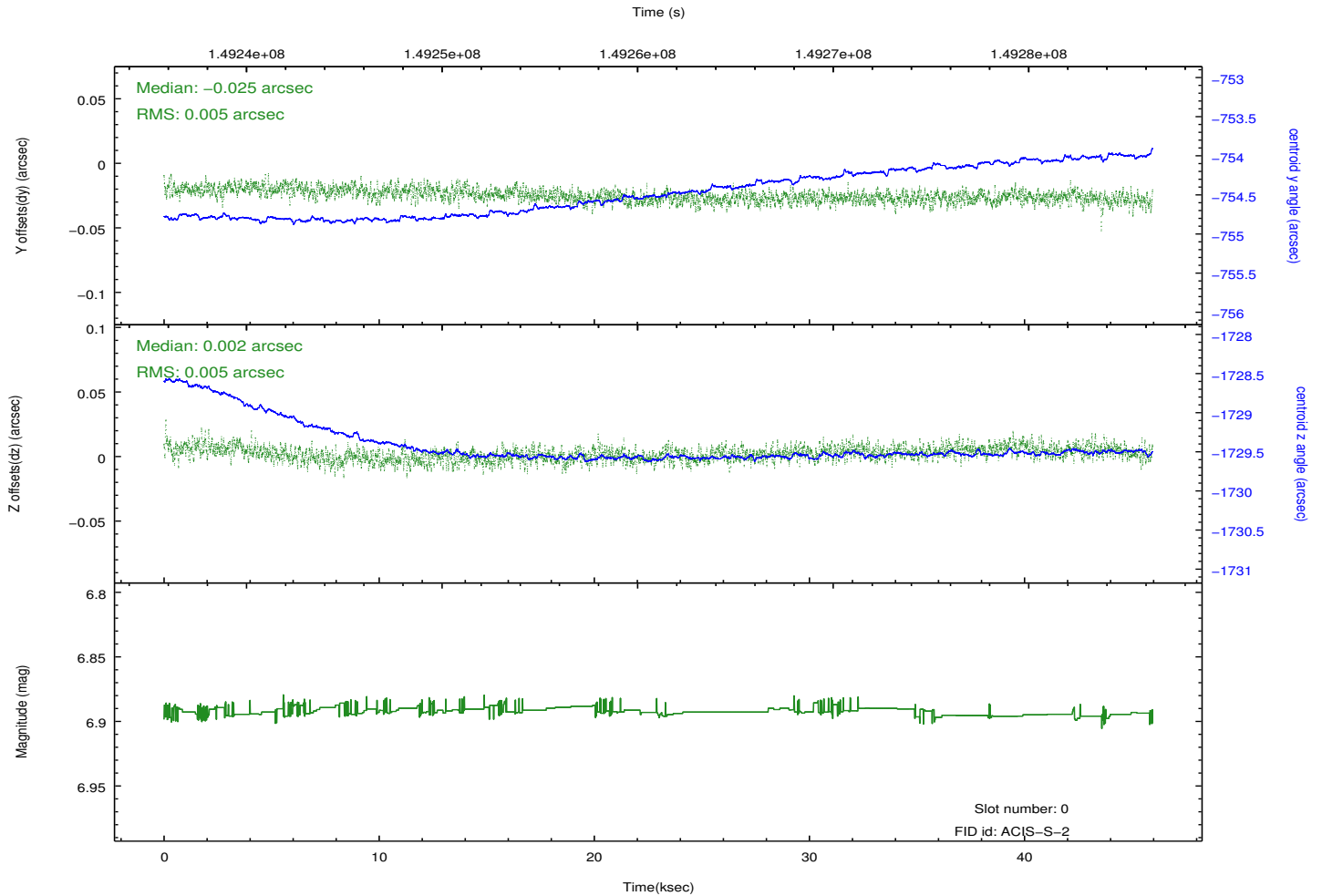
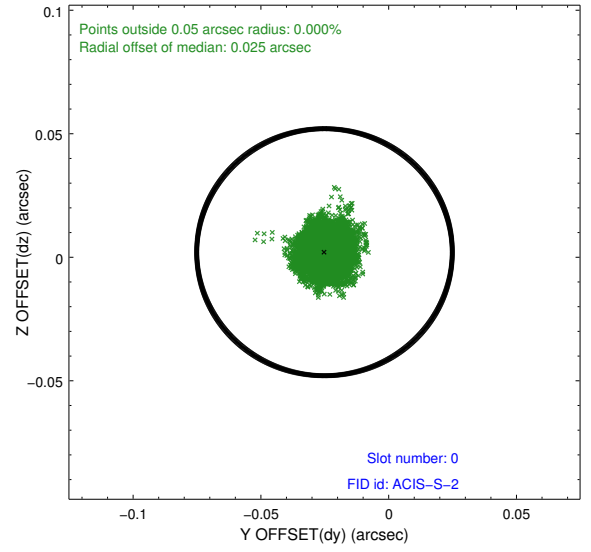
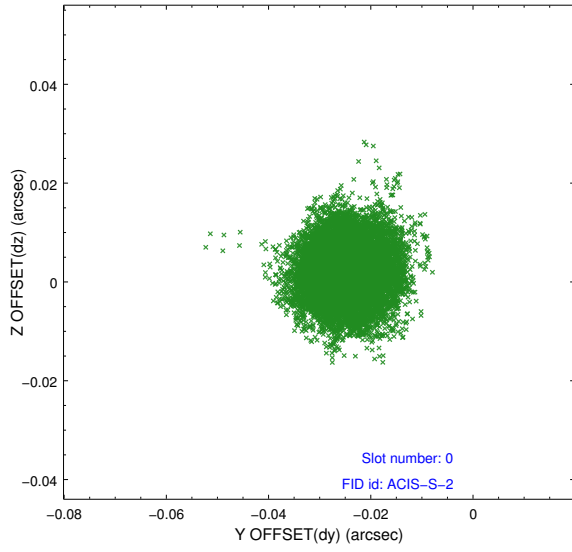


2.4.5 Slot 7

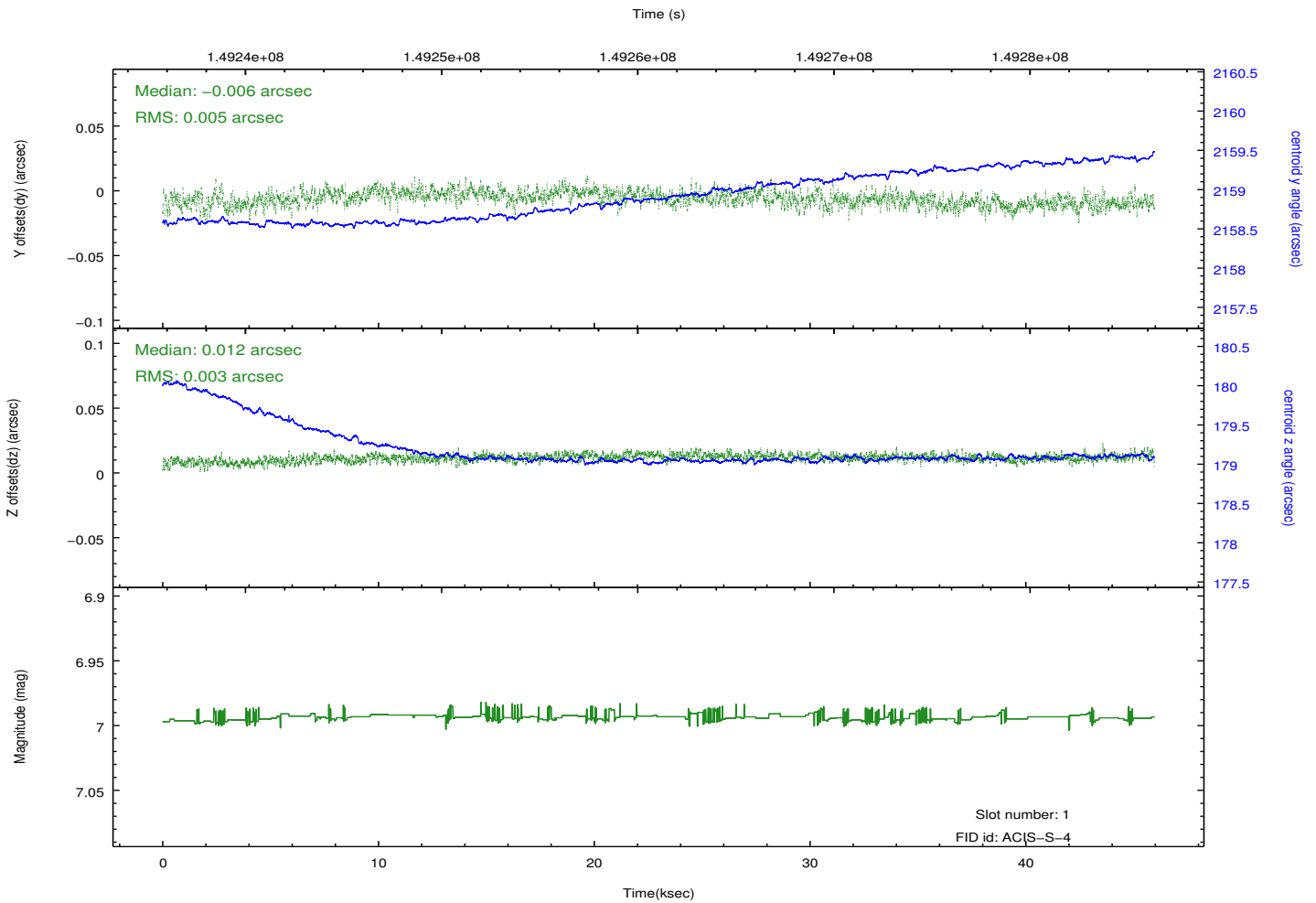
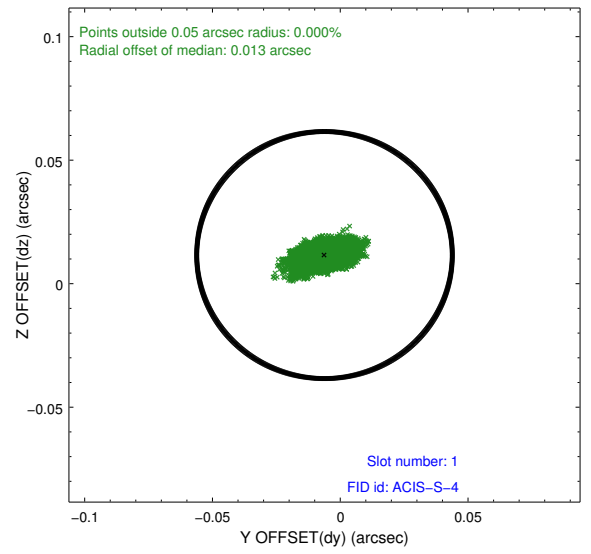
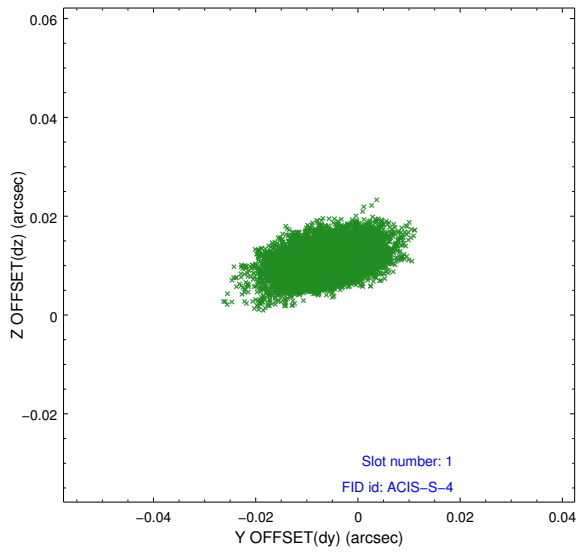


2.5 FID Slots

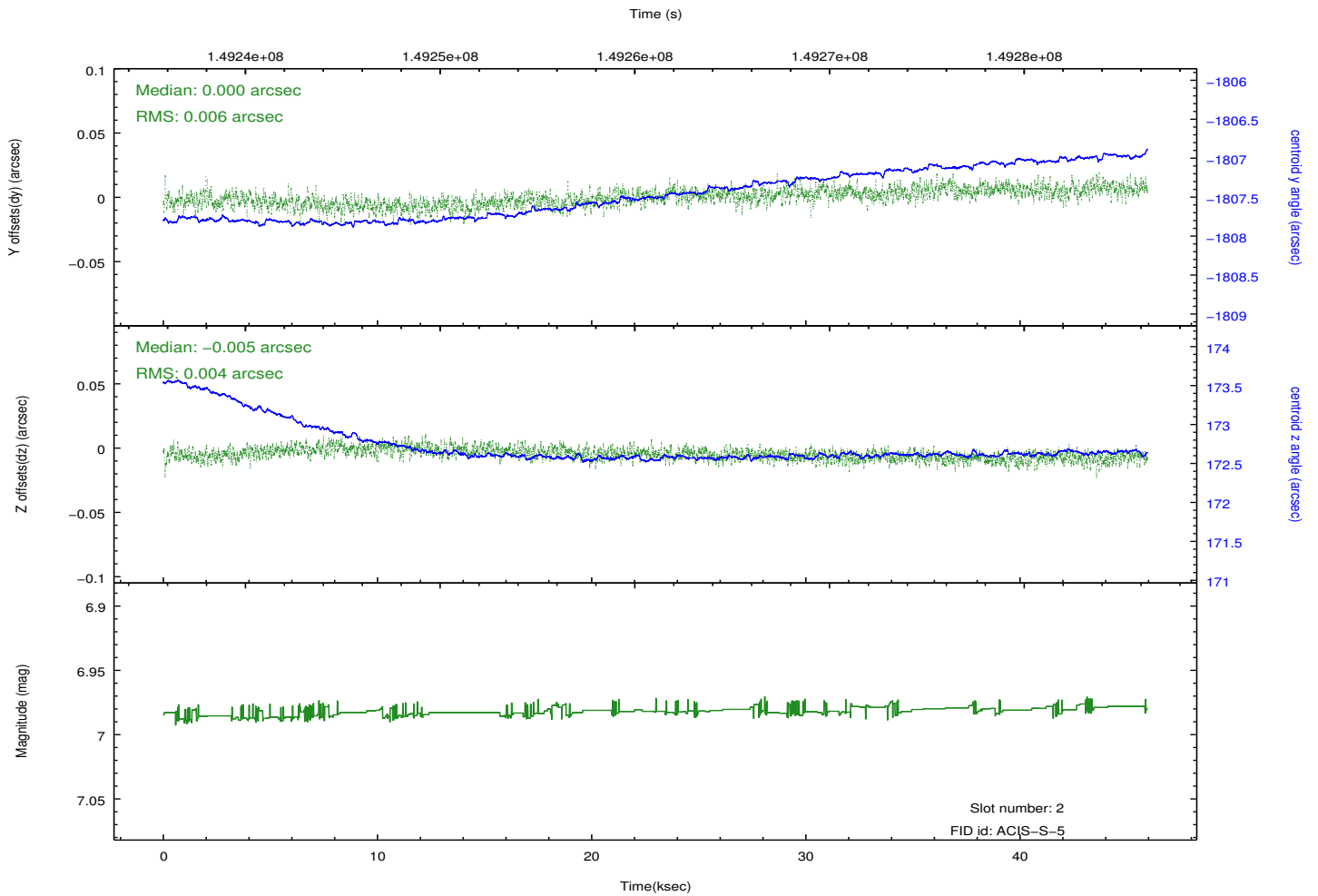
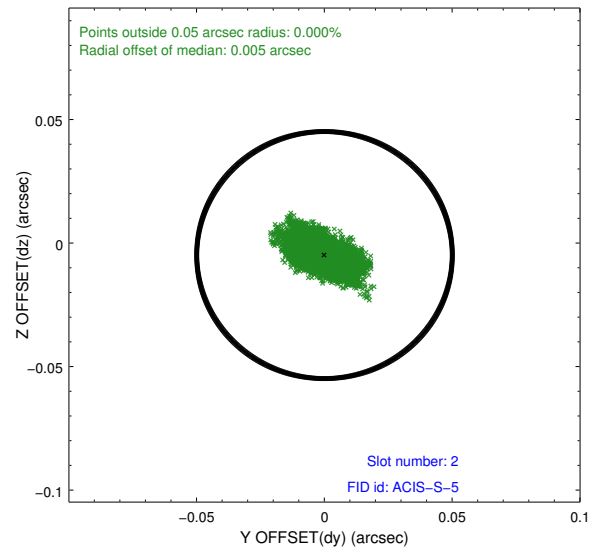
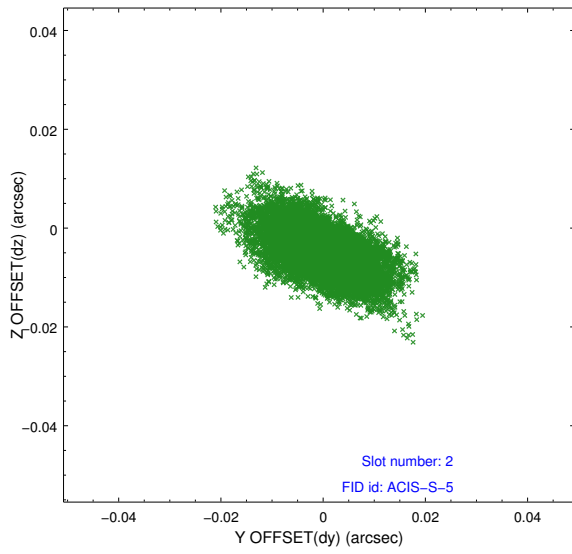
2.5.1 Slot 0



2.5.2 Slot 1



2.5.3 Slot 2



A Summary

A.1 Status

V&V Scientist	Jen Lauer
V&V Date (YYYY-MM-DD)	2012.10.24
V&V Edition	1
V&V Disposition and Status	OK
V&V Charge Time	45.231

A.2 Comments