

V&V Reference Report

L2 ASCDS Version : 8.3.3.1

Observation 316 - L2 Version 6
Chandra X-Ray Center

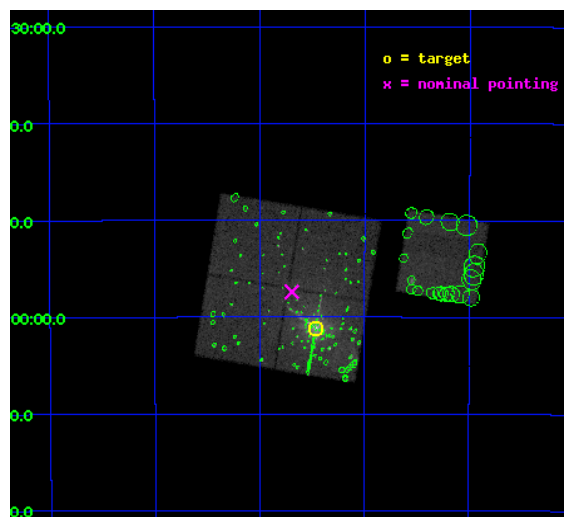
L2 Processing Date : Dec 8 2010

Contents

1	Front	2
2	OBI	3
2.1	OBI	3
2.1.1	Images	3
2.1.2	Bias	3
2.1.3	Parameters	4
2.1.4	Events	4
2.2	Compared Parameters	5
2.3	Aspect	6
2.4	Star Slots	9
2.4.1	Slot 3	9
2.4.2	Slot 4	10
2.4.3	Slot 5	11
2.4.4	Slot 6	12
2.4.5	Slot 7	13
2.5	FID Slots	14
2.5.1	Slot 0	14
2.5.2	Slot 1	15
2.5.3	Slot 2	16
3	Point Sources	17
A	Summary	18
A.1	Status	18
A.2	Comments	18

1 Front

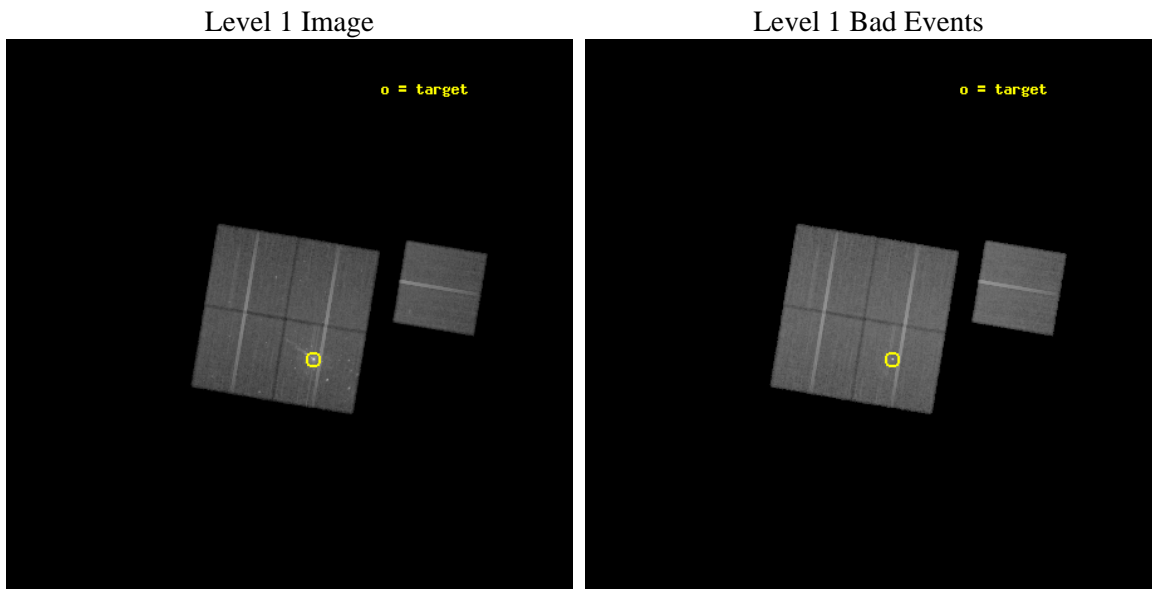
seq_num	600076	Sequence number
obs_id	316	Observation id
title	NGC5128: BINARY SOURCES IN THE NEAREST ELLIPTICAL GALAXY	Proposal
observer	Dr Steve Murray	Principal investigator
object	NGC 5128	Source name
dtcycle	0	
cycle	P	events from which exps? Prim/Second/Both
ra_targ	201.365042	Observer's specified target RA
dec_targ	-43.019139	Observer's specified target Dec
ra_nom	201.42308126647	Nominal RA
dec_nom	-42.956647640195	Nominal Dec
roll_nom	99.548284463486	Nominal Roll
revision	6	Processing version of data
ontime	36179.039063051	Sum of GTIs [s]
livetime	35720.918286033	Livetime [s]
ontime0	36175.959083475	Sum of GTIs [s]
ontime1	36172.680382326	Sum of GTIs [s]
ontime2	36169.398302317	Sum of GTIs [s]
ontime3	36179.039063051	Sum of GTIs [s]
ontime6	36175.839152828	Sum of GTIs [s]
l2events	247153	Number of level 2 events



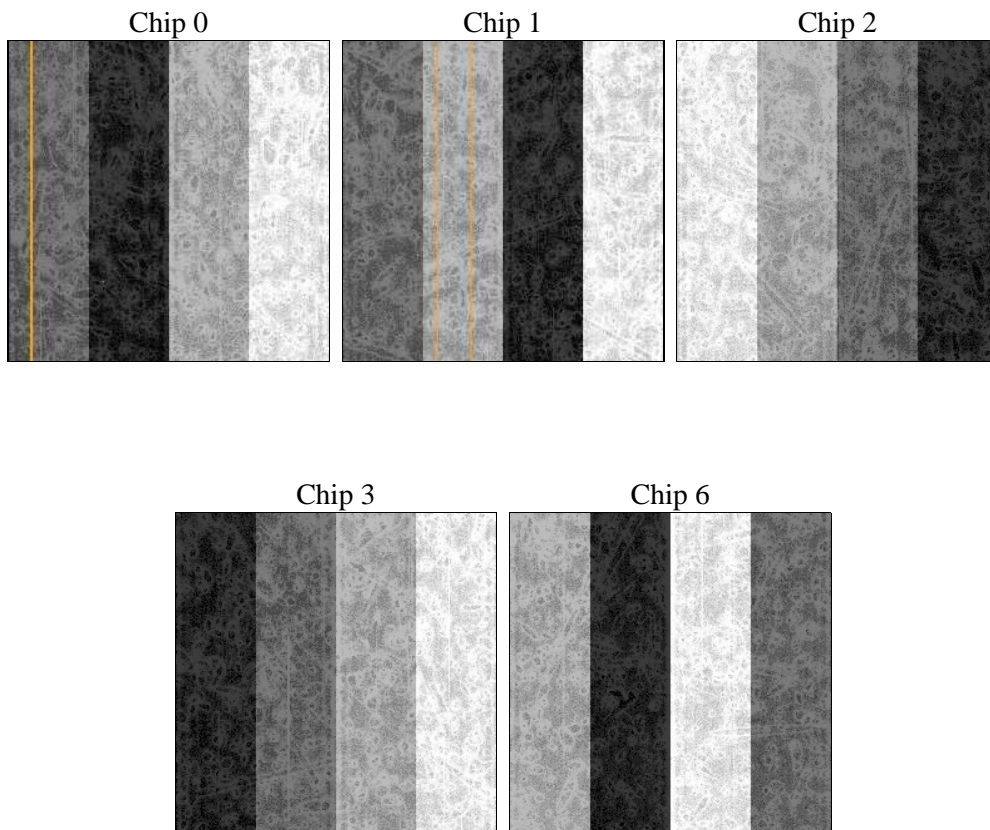
2 OBI

2.1 OBI

2.1.1 Images



2.1.2 Bias



2.1.3 Parameters

obi_num	0	Obi number	sched_exp_time	37000.000000	Scheduled observation exposure time
ascdsver	8.3.3.1	ASCDS version number	ontime	36179.039063051	Sum of GTIs [s]
caldbver	4.4.0	 	ontime0	36175.959083475	Sum of GTIs [s]
date	2010-12-08T21:23:56	Date and time of file creation	ontime1	36172.680382326	Sum of GTIs [s]
revision	4	Processing version of data	ontime2	36169.398302317	Sum of GTIs [s]
			ontime3	36179.039063051	Sum of GTIs [s]
			ontime6	36175.839152828	Sum of GTIs [s]
			l1events	1661025	Number of level 1 events

2.1.4 Events

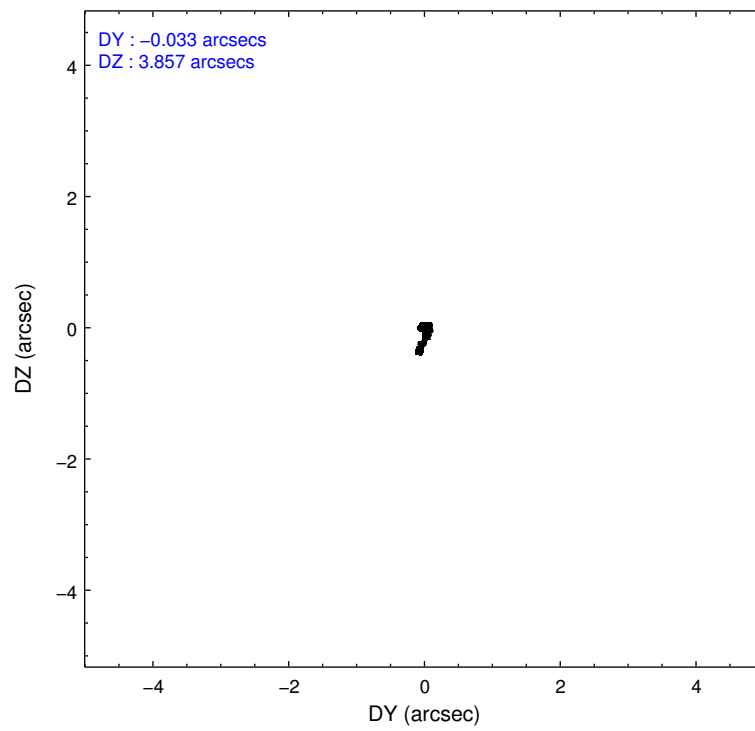
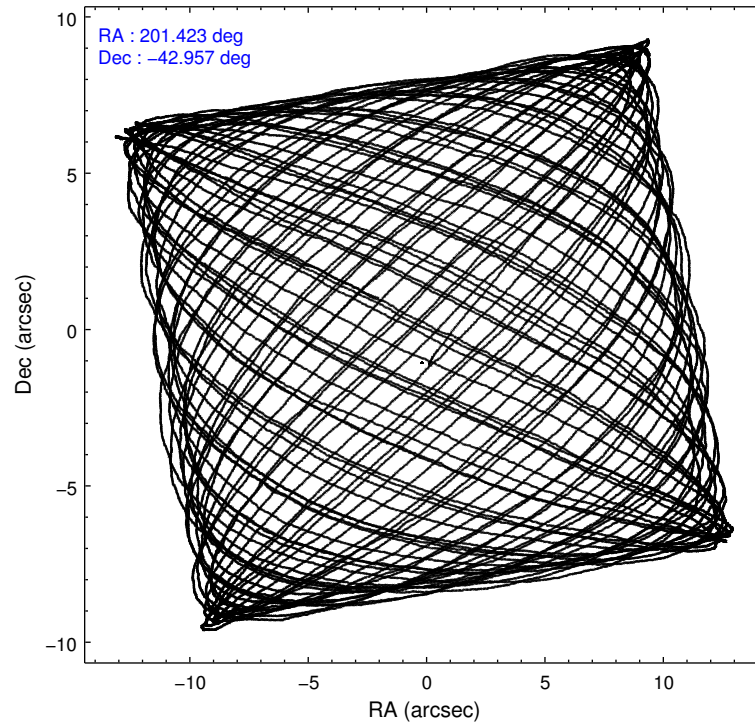
	ccd 0	ccd 1	ccd 2	ccd 3	ccd 6
level 1 events	299327	296524	323969	417734	323471
rejected events	264095	257697	287944	301269	287665
rejected %	88%	86%	88%	72%	88%

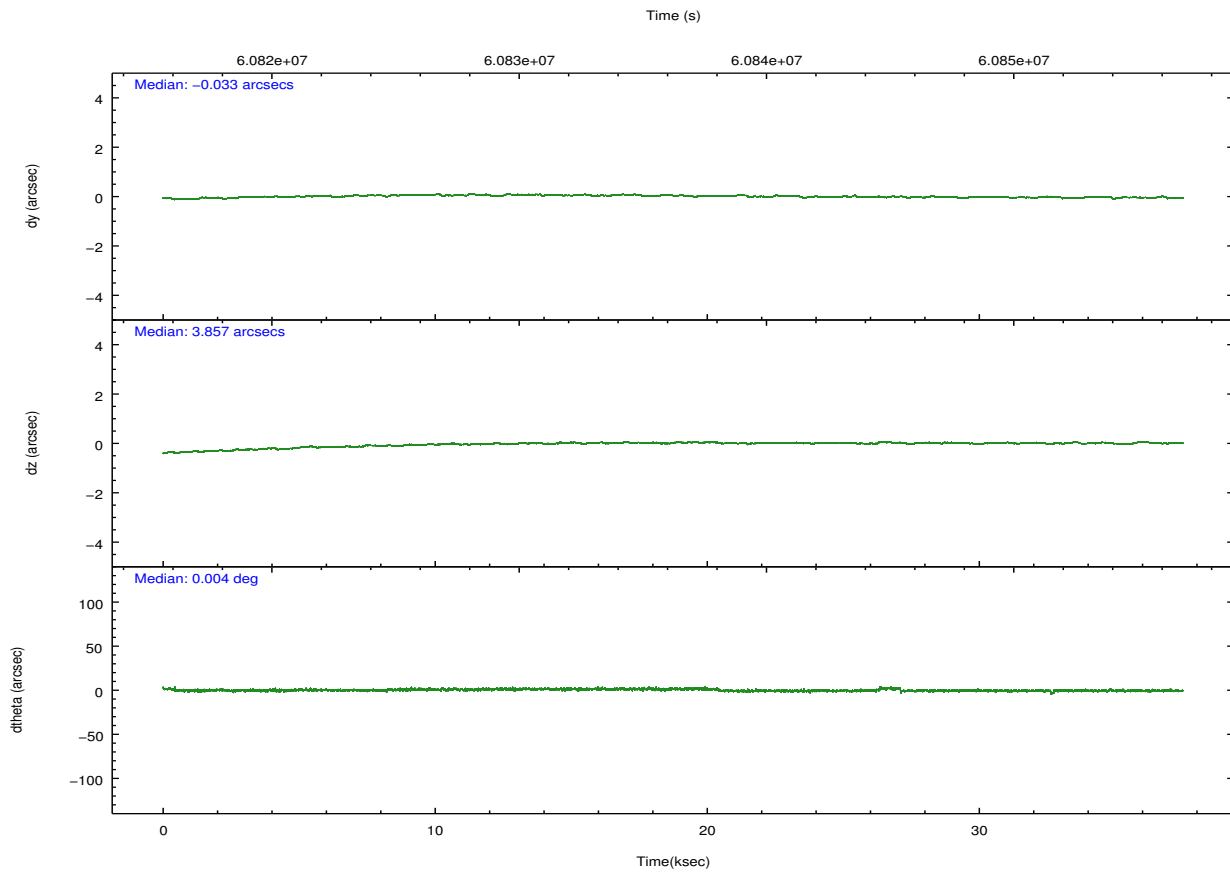
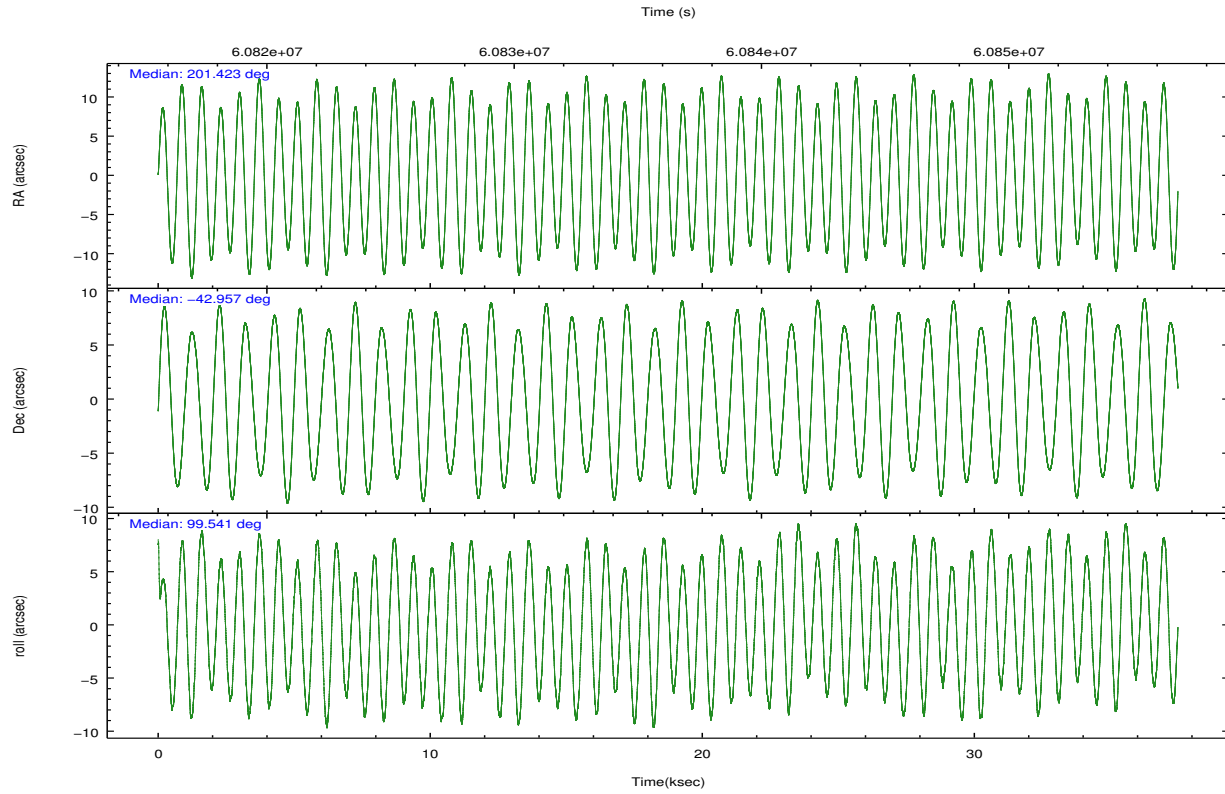
	ccd 0	ccd 1	ccd 2	ccd 3	ccd 6
grade 0 events	10793	12311	11479	44910	9627
	3%	4%	3%	10%	2%
grade 1 events	75	74	63	734	68
	0%	0%	0%	0%	0%
grade 2 events	12738	13280	13325	46877	13858
	4%	4%	4%	11%	4%
grade 3 events	2284	2637	1981	3530	2011
	0%	0%	0%	0%	0%
grade 4 events	2208	2564	1997	3343	1982
	0%	0%	0%	0%	0%
grade 5 events	6105	6551	5373	9499	6660
	2%	2%	1%	2%	2%
grade 6 events	7214	8040	7245	17815	8333
	2%	2%	2%	4%	2%
grade 7 events	257910	251067	282506	291026	280932
	86%	84%	87%	69%	86%

2.2 Compared Parameters

Parameter	Planned	Actual	Parameter	Planned	Actual
Instrument	ACIS	ACIS	Obspar format version number	6	6
Detector	ACIS-01236	ACIS-01236	Obspar file type	PREDICTED	ACTUAL
Grating	NONE	NONE	Obspar update status	NONE	UPDATED
Data mode	FAINT	FAINT	Number of optional ACIS chips dropped	0	0
Observation mode	POINTING	POINTING	On-chip summing requested	N	N
Pointing RA	201.446842	201.4230812664668	Subarray requested	NONE	NONE
Pointing Dec	-42.978236	-42.95664764019497	Alternating exposures requested	N	N
Pointing Roll	99.355791	99.5482844634856	Primary exposure time	0.000000	3.2
SIM focus pos (mm)	-0.782348	-0.7809083437167272			
SIM defocus (mm)	0	0.001439871863259334			
SIM translation stage pos (mm)	-233.592463	-233.5874344608287			
SIM translation stage offset (mm)	0	-0.005018542100998502			
Observation start time	60817964.184000	60817048.053725			
Observation start date	1999-12-05T21:51:40	1999-12-05T21:37:28			
Observation end time	60854964.184000	60856391.655148			
Observation end date	1999-12-06T08:08:20	1999-12-06T08:33:11			
Read mode	TIMED	TIMED			

2.3 Aspect



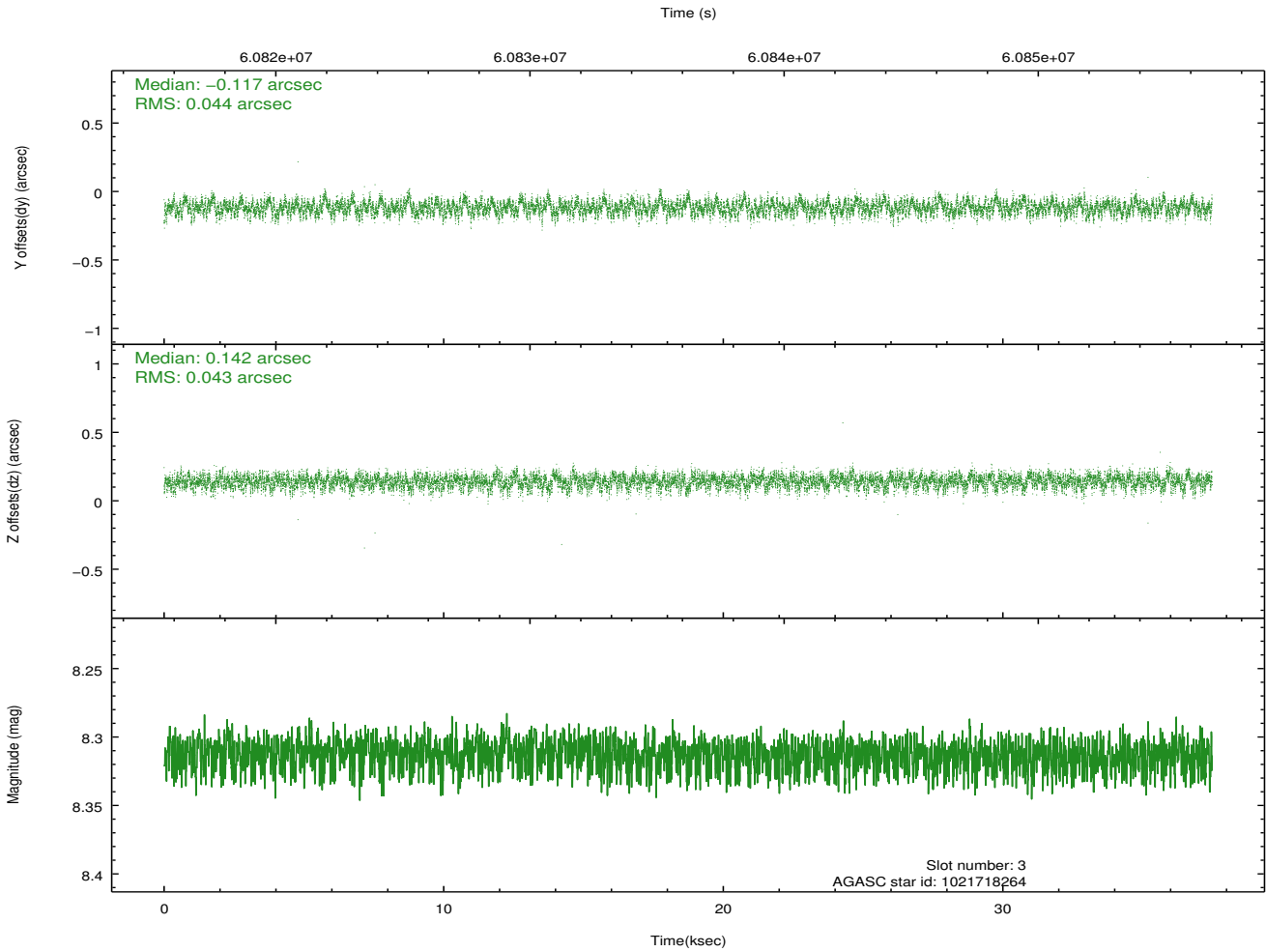
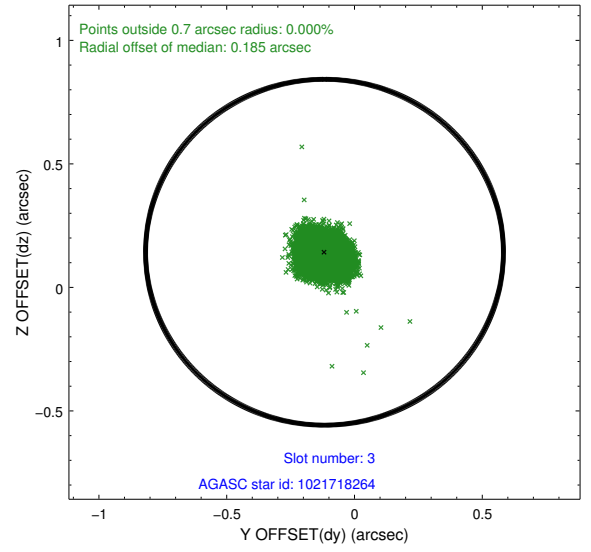
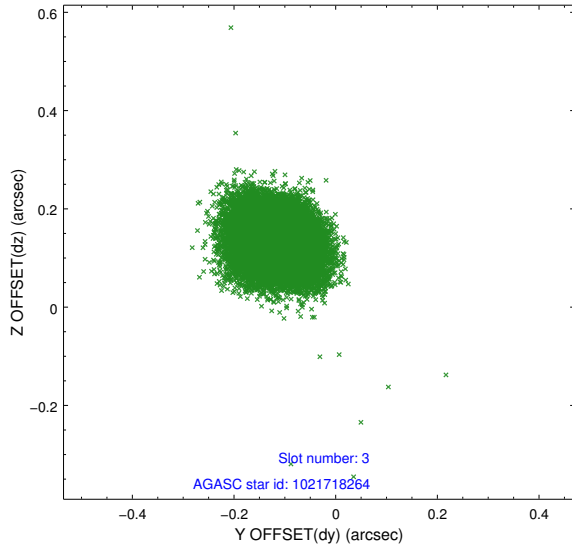


Slot Statistics

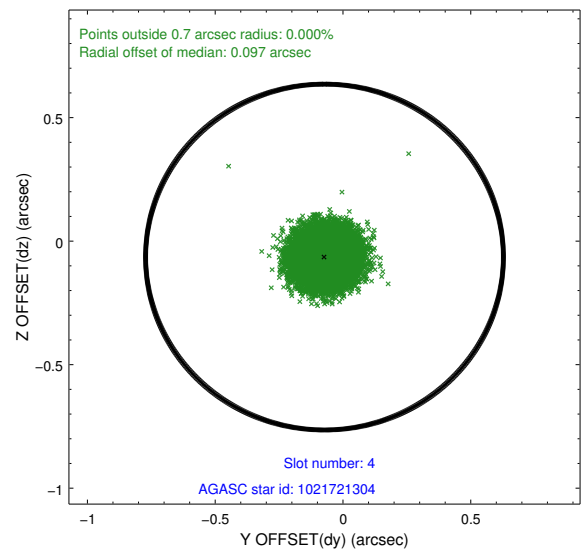
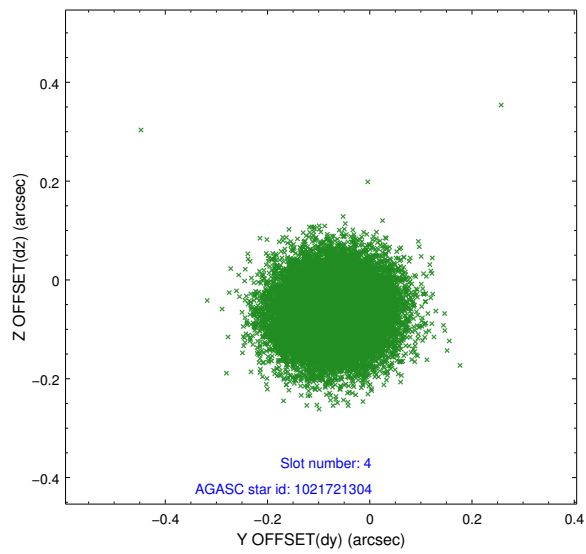
slot	status	id	mag	n_pts	med_dy	med_dz	dr1	dr2	ra	dec	mean_y	mean_z
0	FID	ACIS-I-2	7.19	18284	-0.009	0.093	0.013	0.022	0.000000	0.000000	-754.37	-833.31
1	FID	ACIS-I-4	7.23	18278	0.083	-0.009	0.010	0.023	0.000000	0.000000	2160.01	1072.49
2	FID	ACIS-I-5	7.23	18279	-0.176	-0.015	0.011	0.018	0.000000	0.000000	-1808.25	1070.67
3	GUIDE	1021718264	8.31	18276	-0.117	0.142	0.065	0.105	202.114846	-42.795539	355.61	-1847.34
4	GUIDE	1021721304	9.68	18206	-0.072	-0.064	0.083	0.136	201.117326	-42.480412	1909.06	571.63
5	GUIDE	1022235184	9.82	18223	0.074	-0.192	0.126	0.206	200.682456	-43.590309	-1859.00	2325.34
6	GUIDE	1021721672	9.54	18277	0.034	0.050	0.080	0.129	201.740358	-43.079729	-486.99	-702.40
7	GUIDE	1021716600	9.96	18191	0.077	0.062	0.105	0.171	201.501119	-42.681520	1030.98	-315.81

2.4 Star Slots

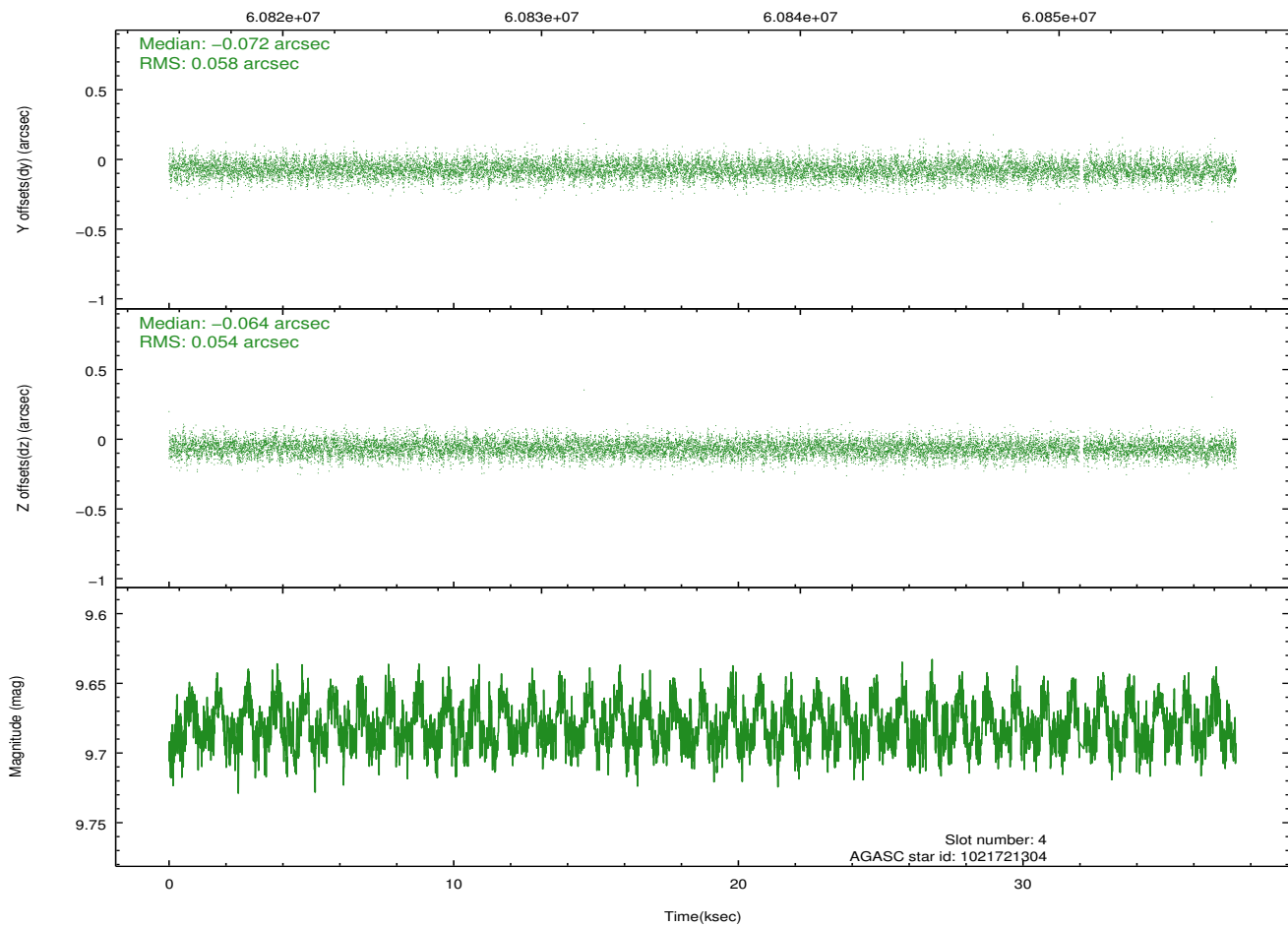
2.4.1 Slot 3



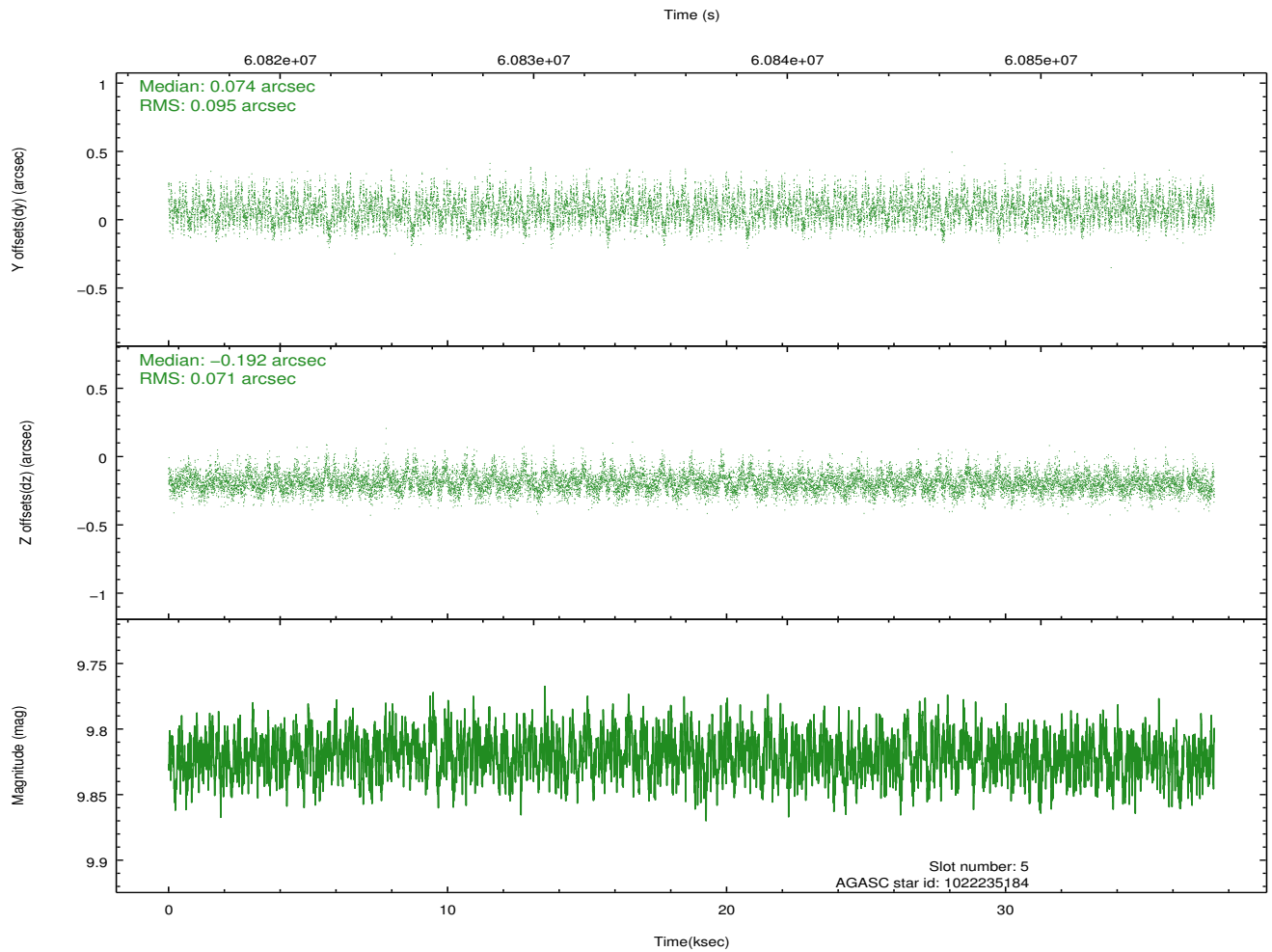
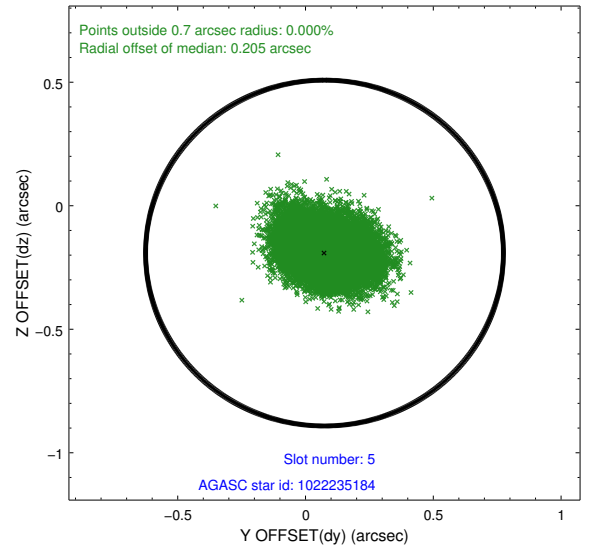
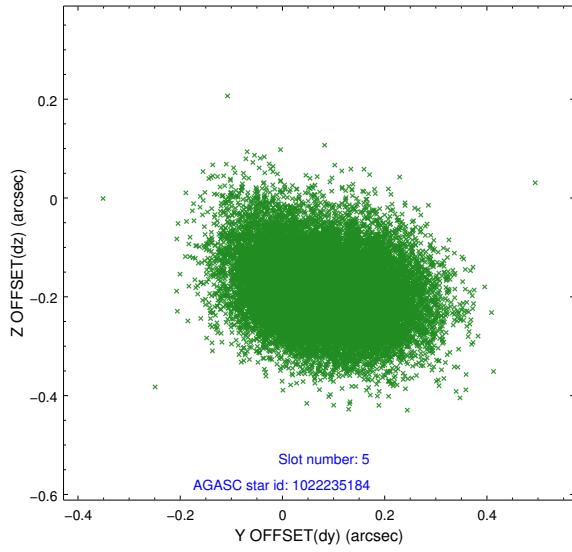
2.4.2 Slot 4



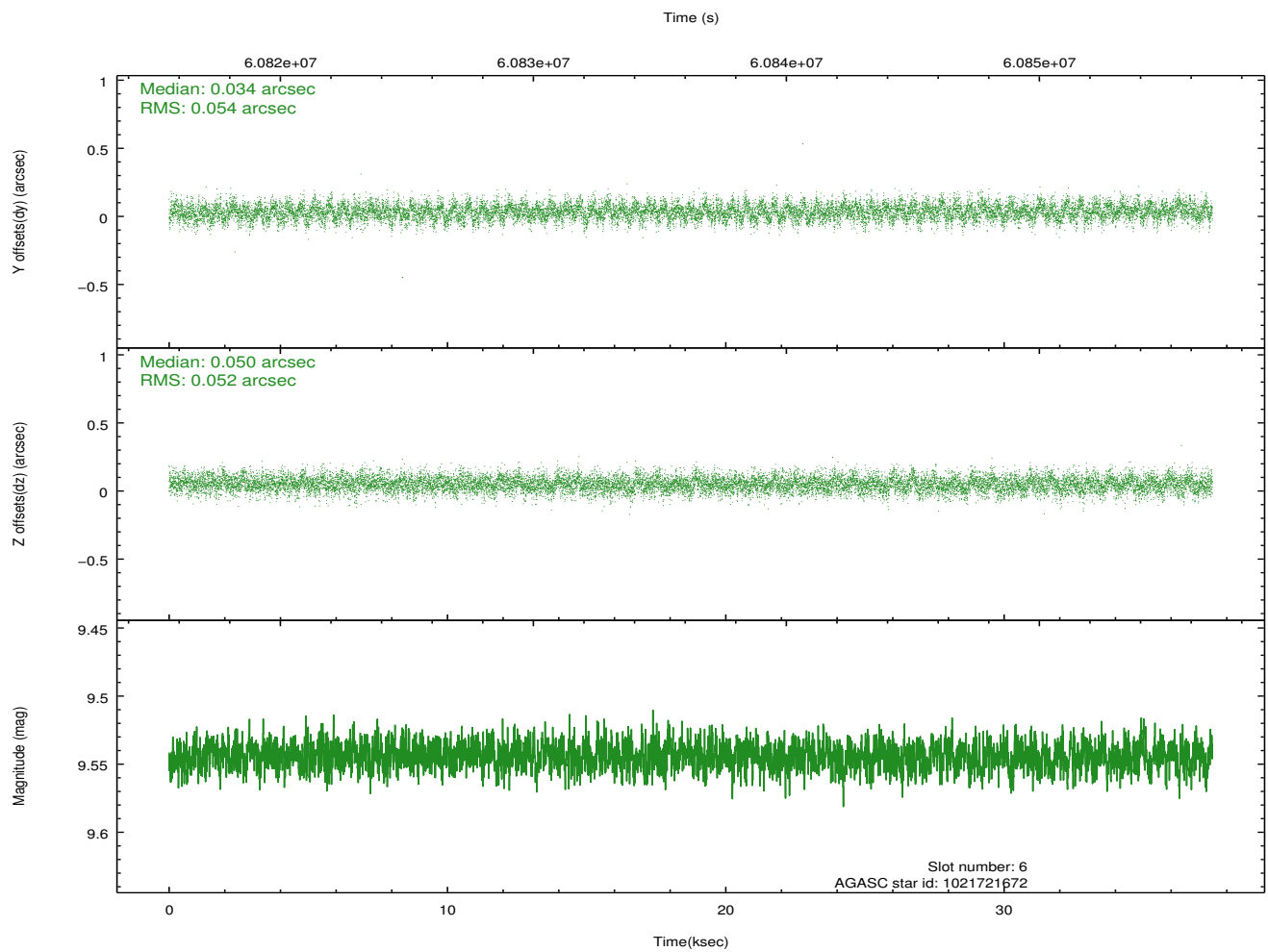
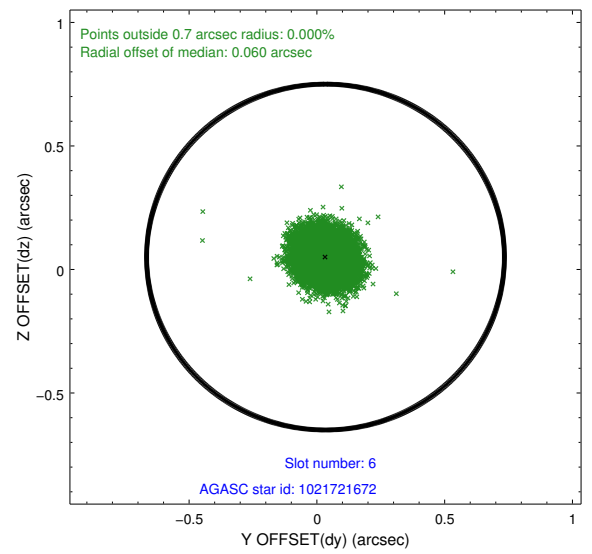
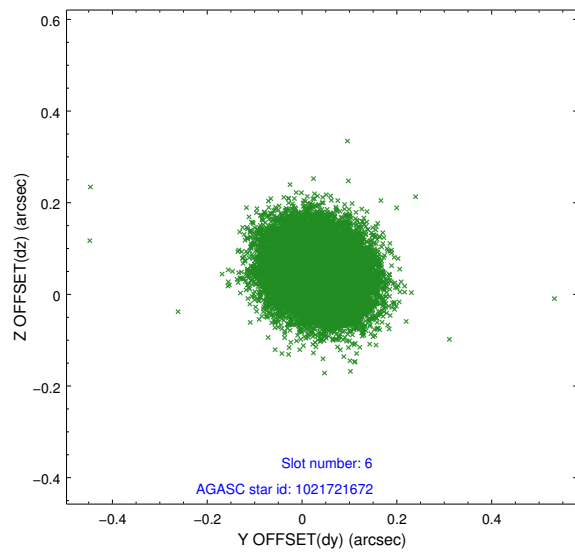
Time (s)



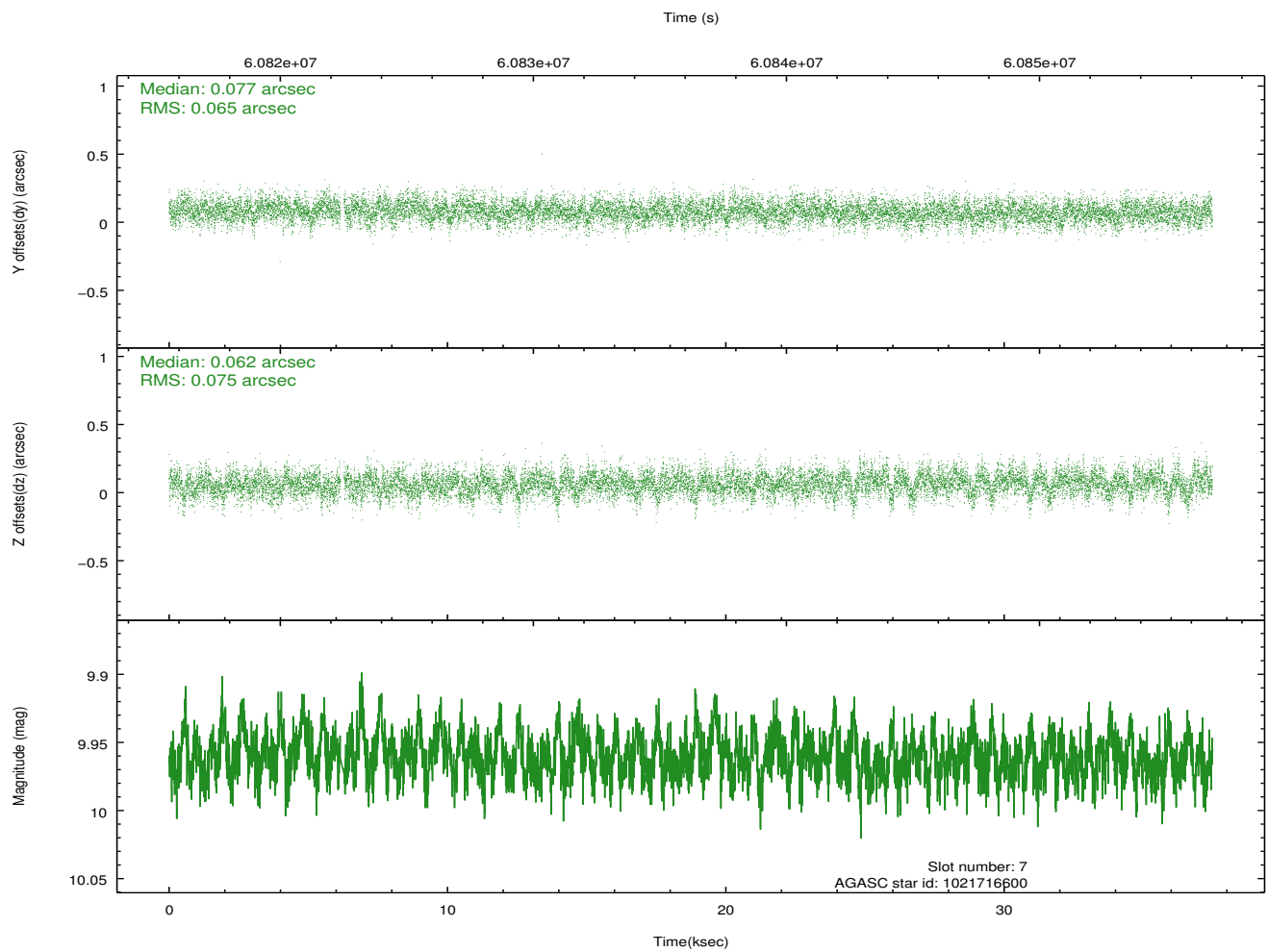
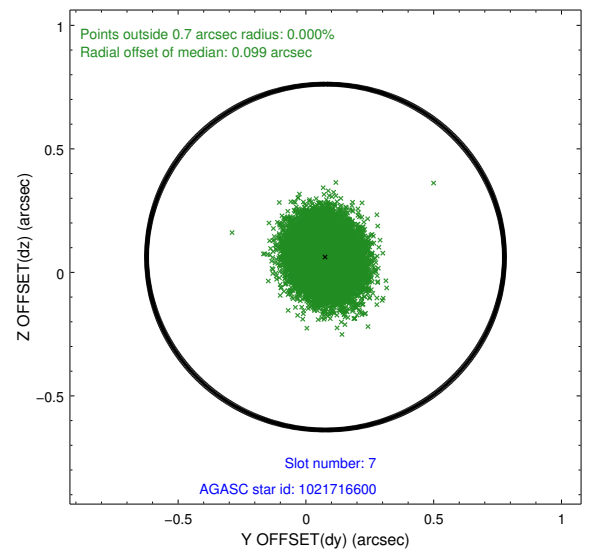
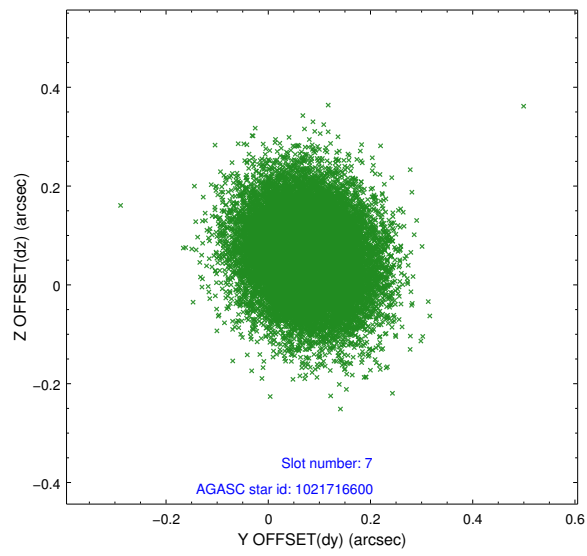
2.4.3 Slot 5



2.4.4 Slot 6

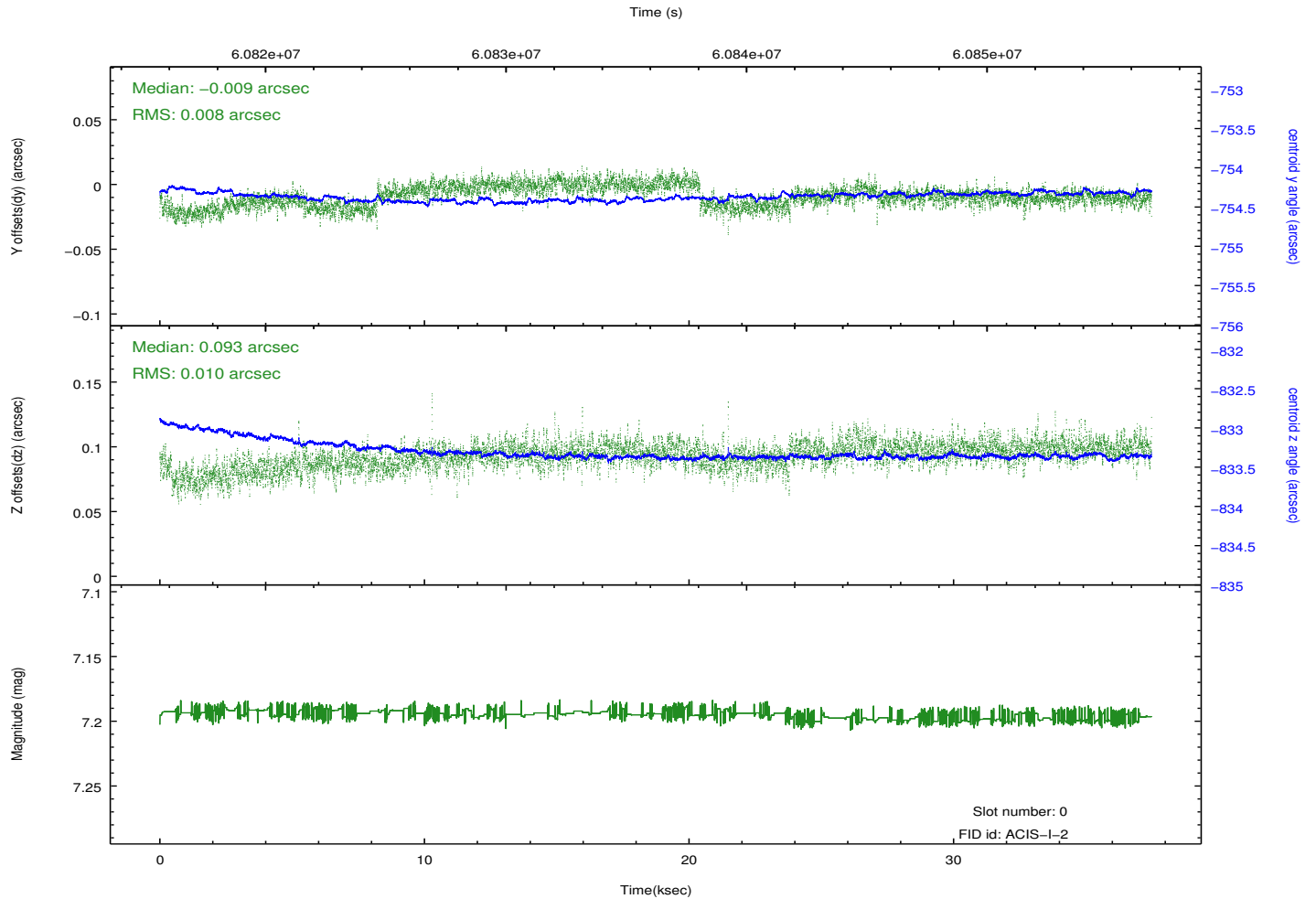
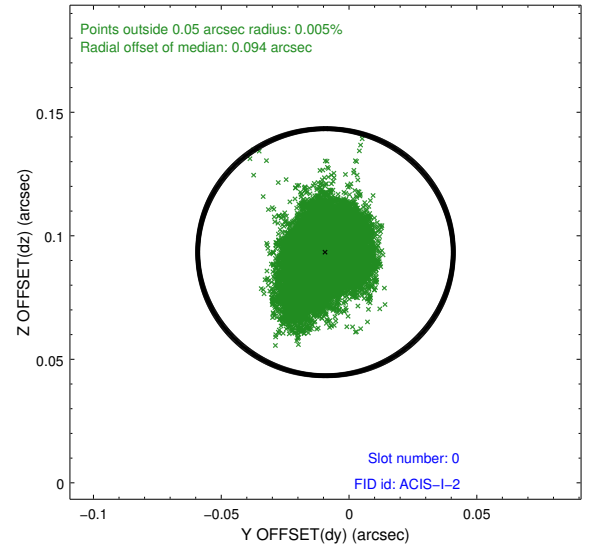
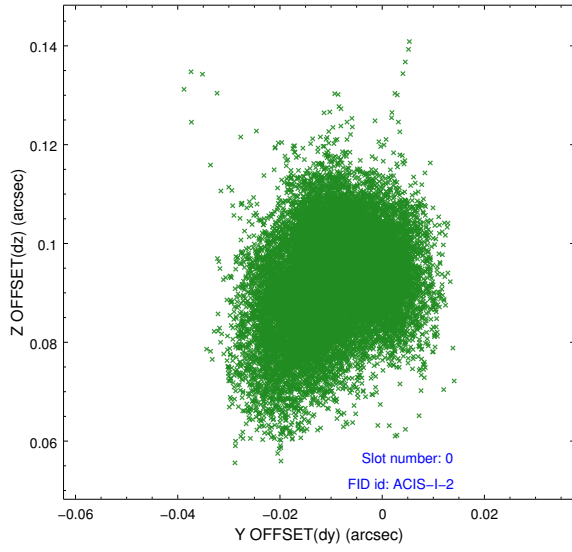


2.4.5 Slot 7

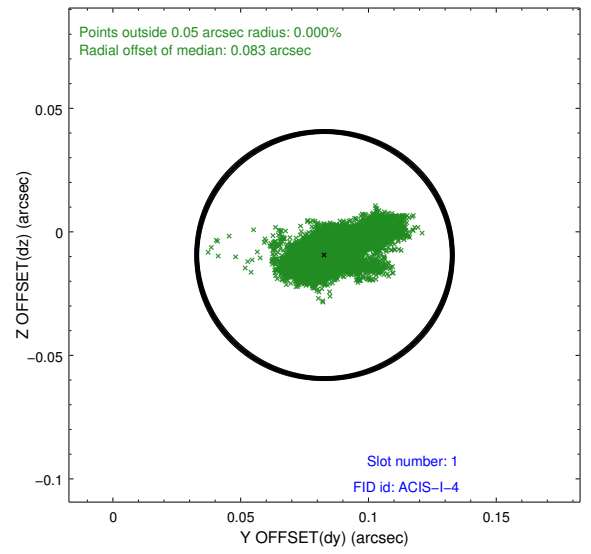
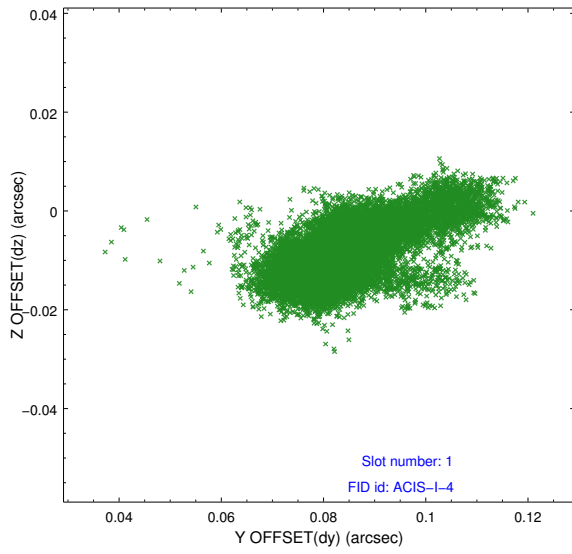


2.5 FID Slots

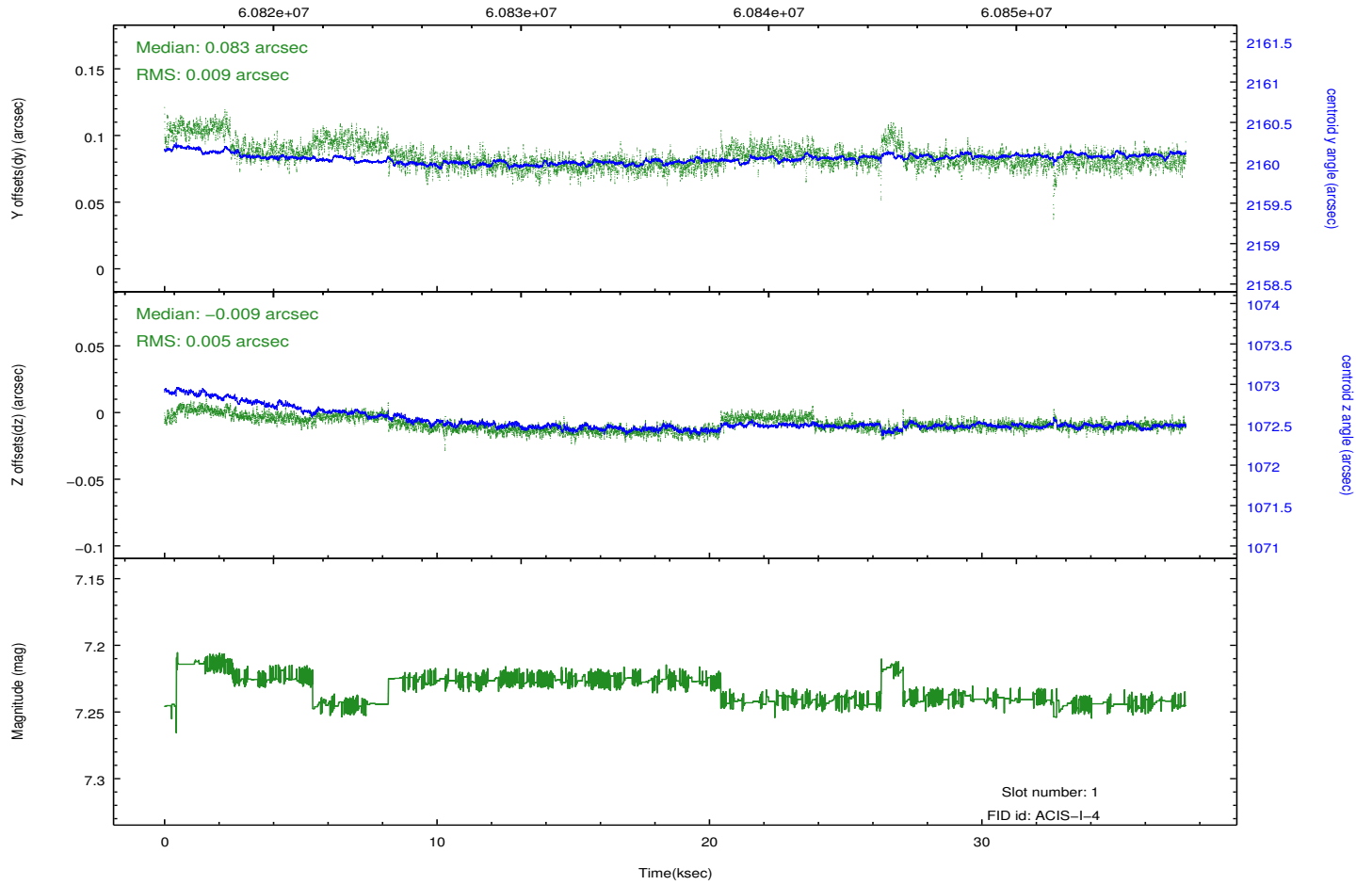
2.5.1 Slot 0



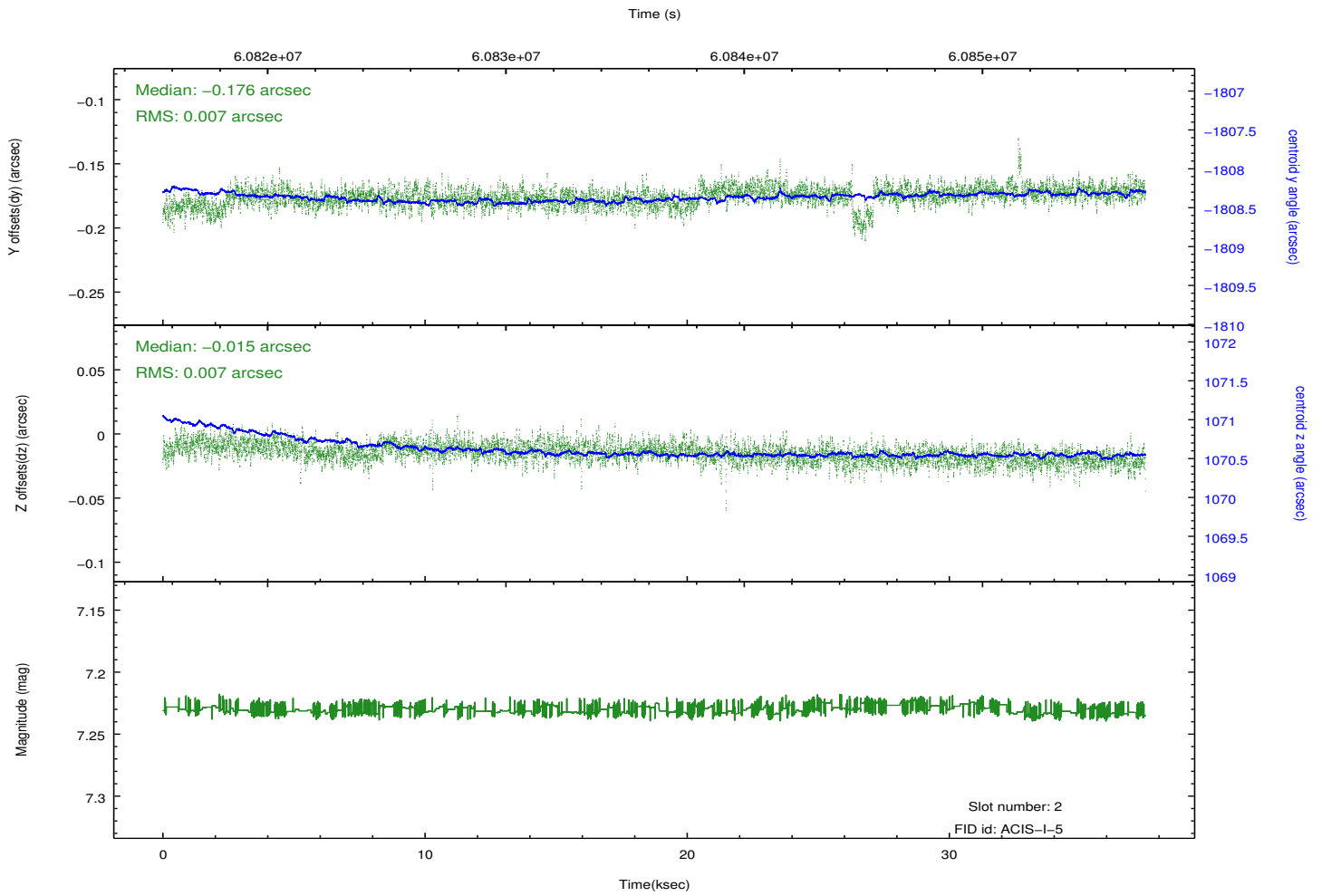
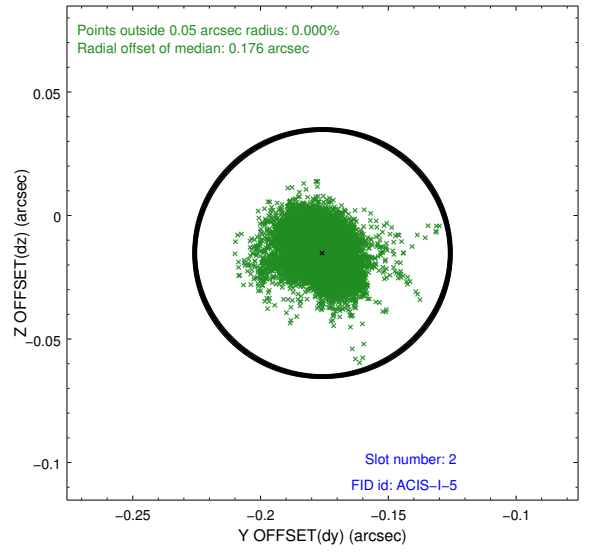
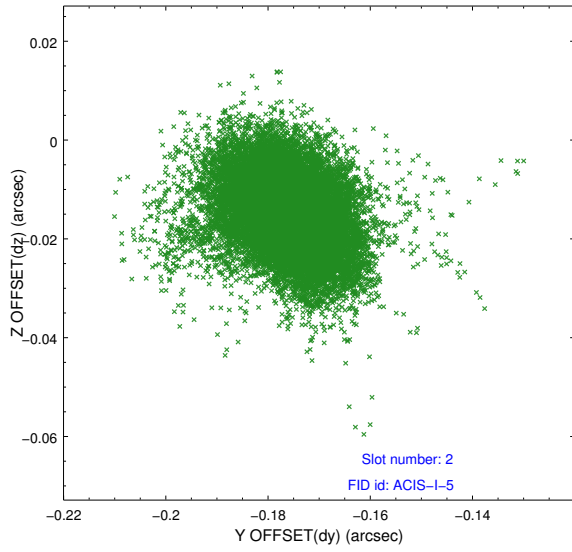
2.5.2 Slot 1



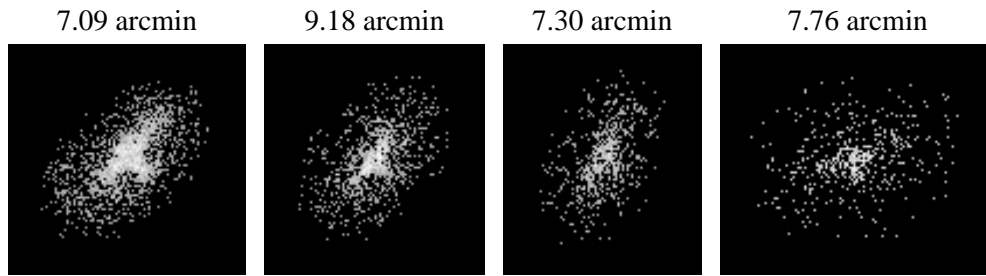
Time (s)



2.5.3 Slot 2



3 Point Sources



A Summary

A.1 Status

V&V Scientist	Beth Sundheim
V&V Date (YYYY-MM-DD)	2010.12.09
V&V Edition	1
V&V Disposition and Status	OK
V&V Charge Time	36.182

A.2 Comments

A spatial region of the original bias map for CCD = 1 suffered from anomalously high data values. Pixels in the event data that were bias-corrected by one of the original affected bias pixels may have an apparent energy shift. While the change in energy is expected to be small (~20 eV), it depends on many parameters that have not yet been fully explored for this bias anomaly. The bias map for CCD = 1 has been reconstructed for this processing to remove this anomaly using scaled data from a comparable bias map from another observation. The pixels affected by the anomaly are bounded by sky coords: (201.59503, -42.99510), (201.60348, -42.99403), (201.59040, -42.93786), (201.58265, -42.94188).

==

The focal plane temperature is approximately -110 C during this observation. This reprocessing of the data applies no CTI correction because none is available for this temperature at present.

The ACIS CTI correction has not been calibrated at this temperature because it was early in the mission, and ACIS had not yet been lowered to the standard -119.7 C. Both front- and back-illuminated chips are affected.

The ACIS spectral response calibration is less accurate at these warmer temperatures than it is at -119.7 C. Users whose science objectives depend on the most accurate spectral response (ie: fitting line-rich spectra) may notice an effect. Users whose science objectives do not depend on the most accurate spectral response should not notice an effect.