

V&V Reference Report

L2 ASCDS Version : 8.1.1

Observation 376 - L2 Version 4
Chandra X-Ray Center

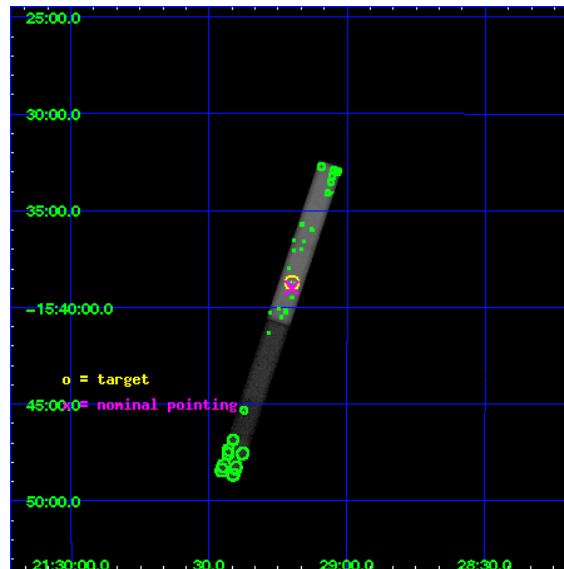
L2 Processing Date : Nov 24 2009

Contents

1	Front	2
2	OBI	3
2.1	OBI	3
2.1.1	Images	3
2.1.2	Bias	3
2.1.3	Parameters	4
2.1.4	Events	4
2.2	Compared Parameters	5
2.3	Aspect	6
2.4	Star Slots	9
2.4.1	Slot 3	9
2.4.2	Slot 4	10
2.4.3	Slot 5	11
2.4.4	Slot 6	12
2.4.5	Slot 7	13
2.5	FID Slots	14
2.5.1	Slot 0	14
2.5.2	Slot 1	15
2.5.3	Slot 2	16
3	Point Sources	17
A	Summary	18
A.1	Status	18
A.2	Comments	18

1 Front

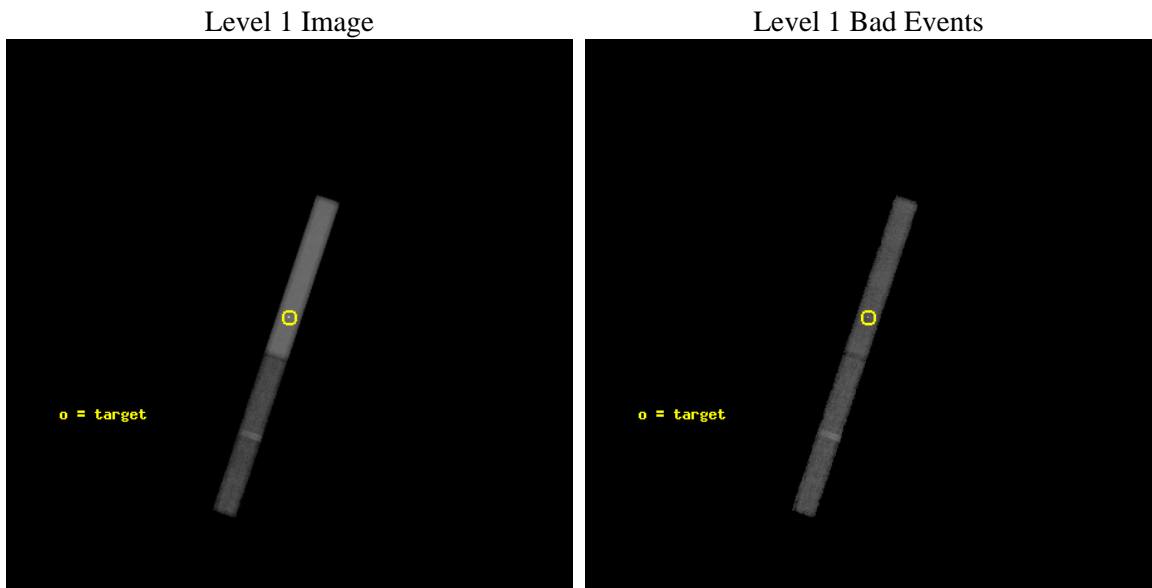
seq_num	700048	Sequence number
obs_id	376	Observation id
title	HIGH REDSHIFT QUASAR SPECTRA	Proposal title
observer	Dr Steve Murray	Principal investigator
object	PKS 2126-158	Source name
dtcycle	0	
cycle	P	events from which exps? Prim/Second/Both
ra_targ	322.300417	Observer's specified target RA
dec_targ	-15.645	Observer's specified target Dec
ra_nom	322.30003168852	Nominal RA
dec_nom	-15.649941952882	Nominal Dec
roll_nom	288.48970760492	Nominal Roll
revision	4	Processing version of data
ontime	36935.0	Sum of GTIs [s]
liveltime	34133.335797723	Livetime [s]
ontime6	36935.0	Sum of GTIs [s]
ontime7	36935.0	Sum of GTIs [s]
l2events	345425	Number of level 2 events



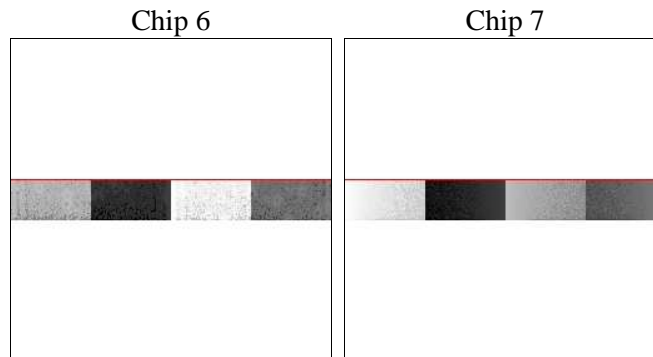
2 OBI

2.1 OBI

2.1.1 Images



2.1.2 Bias



2.1.3 Parameters

obi_num	0	Obi number	sched_exp_time	38703.096000	Scheduled observation exposure time
ascdsver	8.1.1	ASCDS version number	ontime	36935.0	Sum of GTIs [s]
caldbver	4.1.4	 	ontime6	36935.0	Sum of GTIs [s]
date	2009-11-24T12:42:16	Date and time of file creation	ontime7	36935.0	Sum of GTIs [s]
revision	3	Processing version of data	ll events	488157	Number of level 1 events

2.1.4 Events

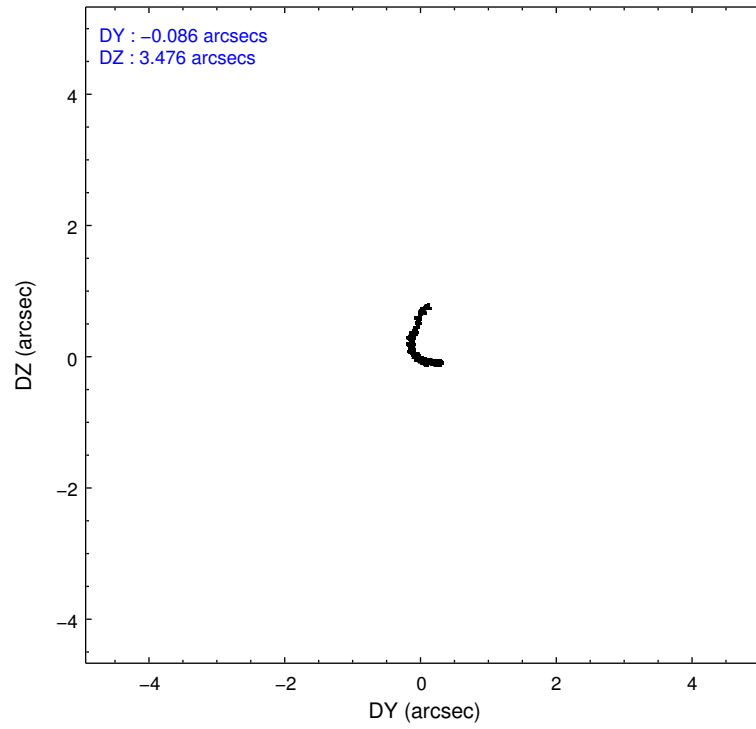
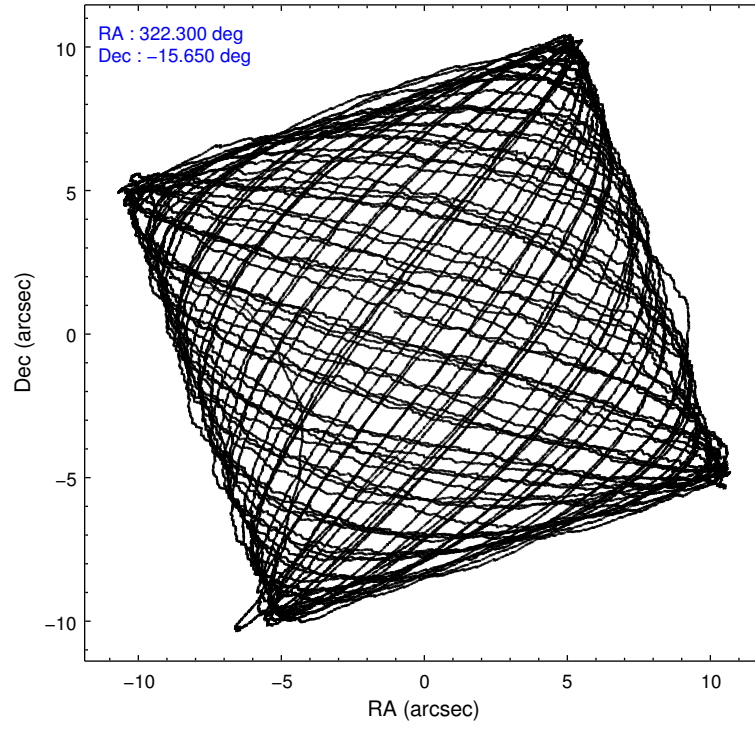
	ccd 6	ccd 7
level 1 events	101368	386789
rejected events	65032	70460
rejected %	64%	18%

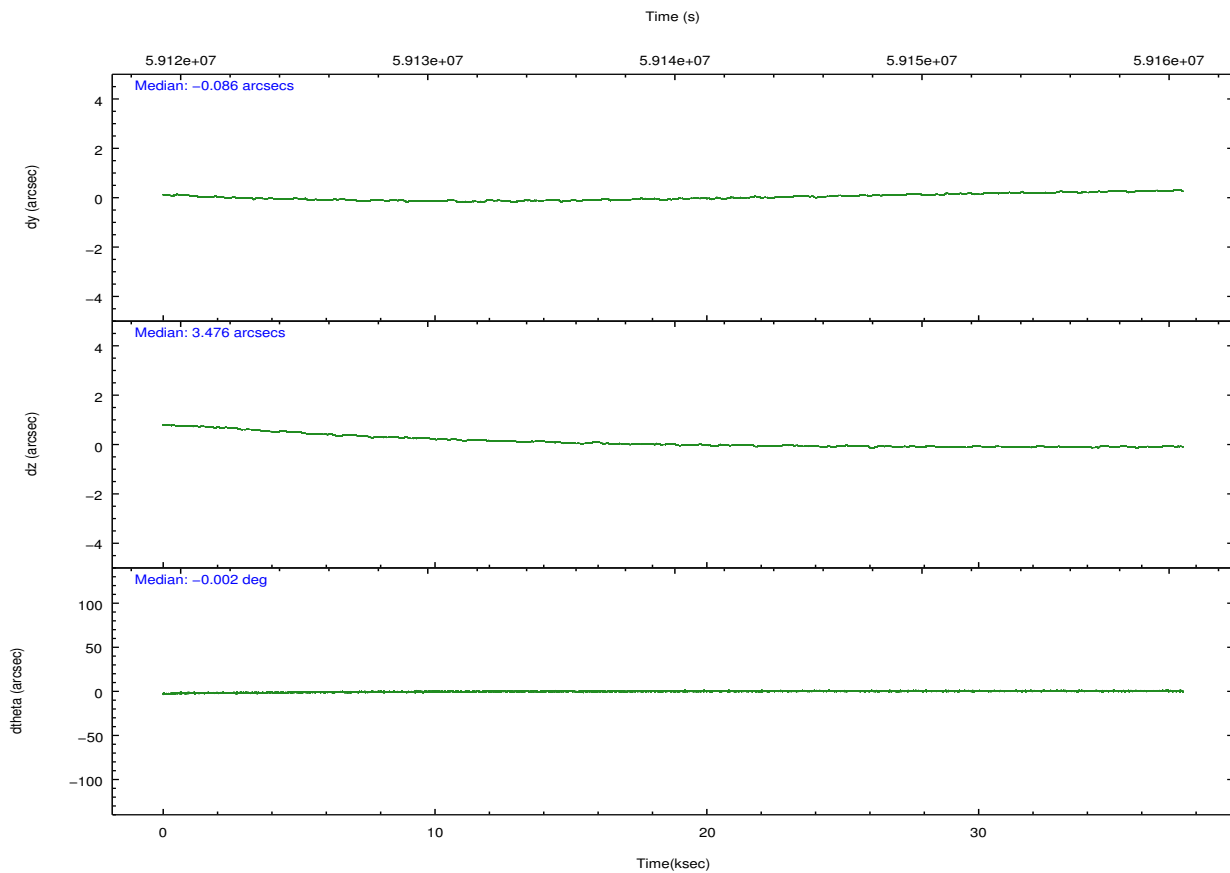
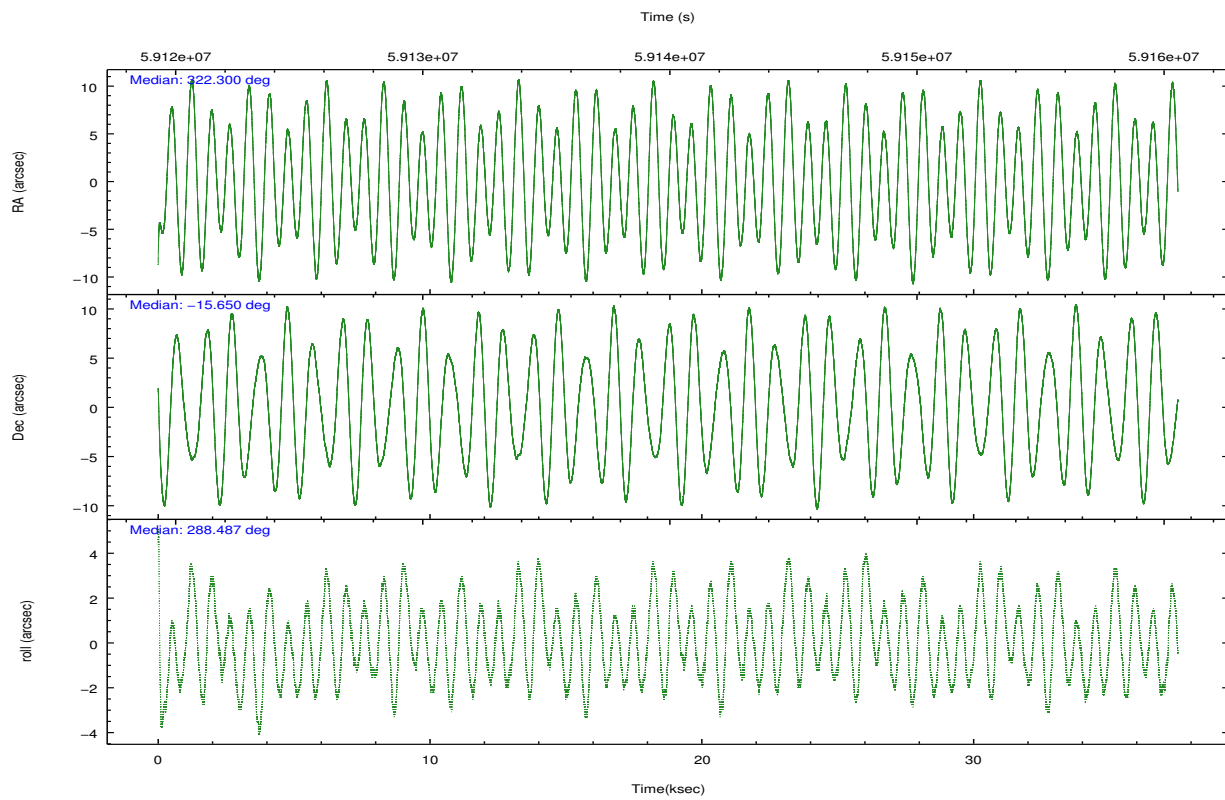
	ccd 6	ccd 7
grade 0 events	7785	41192
	7%	10%
grade 1 events	8	332
	0%	0%
grade 2 events	24391	63164
	24%	16%
grade 3 events	1136	23660
	1%	6%
grade 4 events	1067	22326
	1%	5%
grade 5 events	755	7038
	0%	1%
grade 6 events	1959	165992
	1%	42%
grade 7 events	64267	63085
	63%	16%

2.2 Compared Parameters

Parameter	Planned	Actual	Parameter	Planned	Actual
Instrument	ACIS	ACIS	Obspar format version number	6	6
Detector	ACIS-67	ACIS-67	Obspar file type	PREDICTED	ACTUAL
Grating	NONE	NONE	Obspar update status	NONE	UPDATED
Data mode	VFAINT	VFAINT	Number of optional ACIS chips dropped	0	0
Observation mode	POINTING	POINTING	On-chip summing requested	N	N
Pointing RA	322.278664	322.3000316885249	Subarray requested	CUSTOM	1/8
Pointing Dec	-15.631575	-15.64994195288162	Subarray start row	447	447
Pointing Roll	288.327316	288.4897076049231	Subarray row count	128	128
SIM focus pos (mm)	-0.684267	-0.6828225247311905	Alternating exposures requested	N	N
SIM defocus (mm)	0	0.001444936568705701	Primary exposure time	0.000000	0.5
SIM translation stage pos (mm)	-190.132523	-190.145094680475			
SIM translation stage offset (mm)	0	0.01257209746719923			
Observation start time	59121618.184000	59120450.054899			
Observation start date	1999-11-16T06:39:14	1999-11-16T06:20:50			
Observation end time	59158682.184000	59159070.006294			
Observation end date	1999-11-16T16:56:58	1999-11-16T17:04:30			
Read mode	TIMED	TIMED			

2.3 Aspect



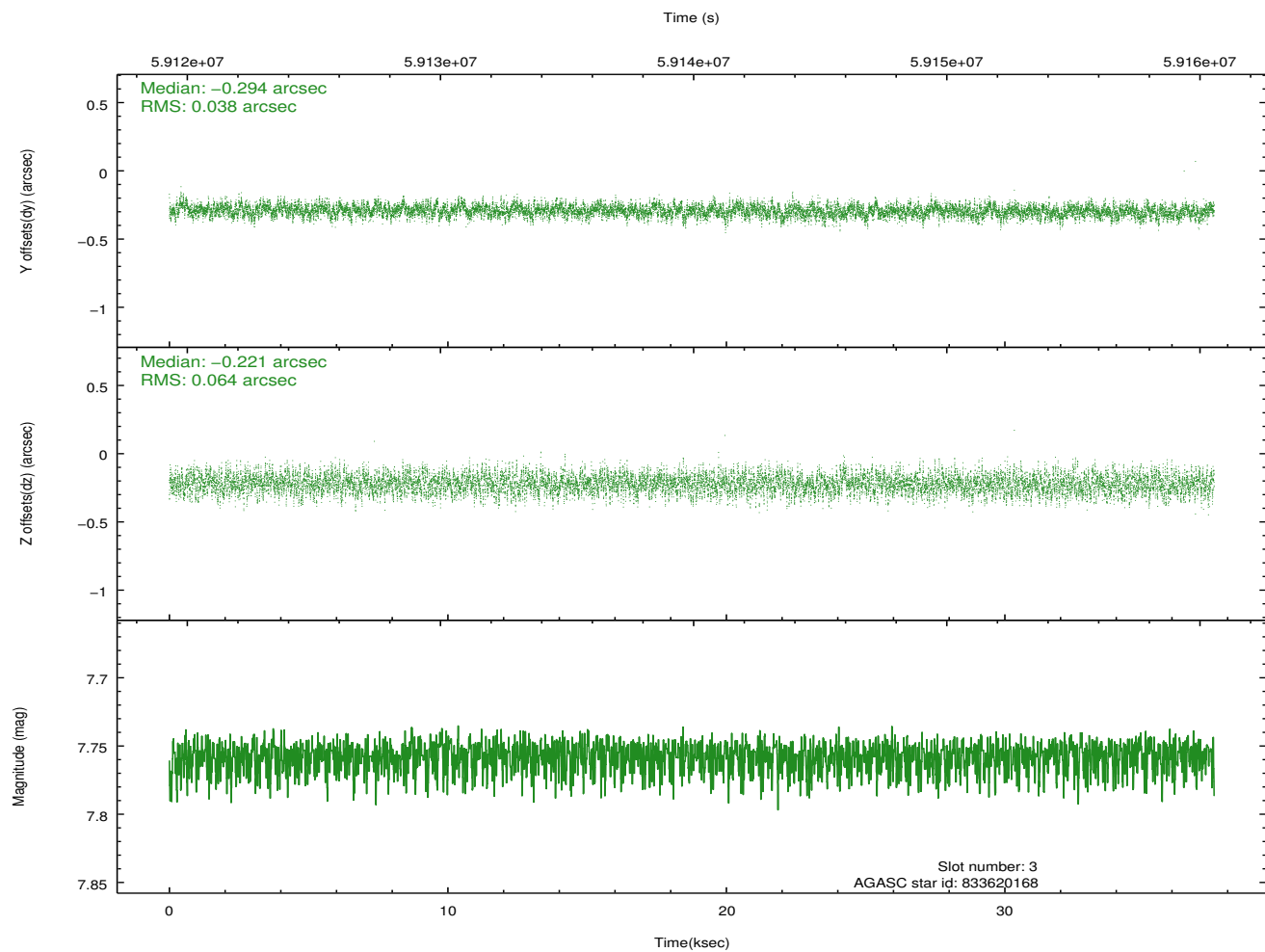
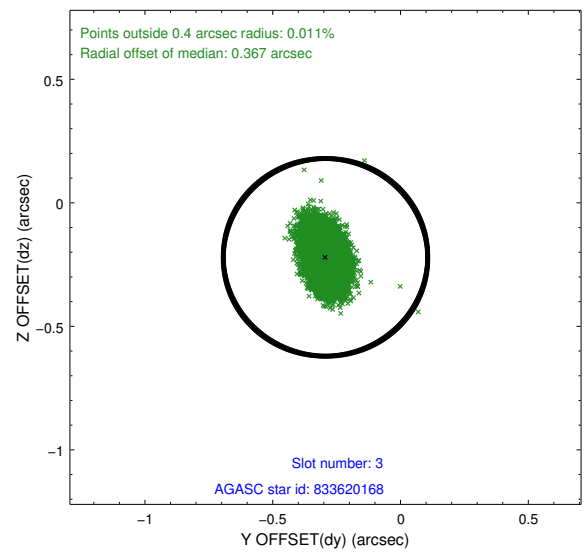
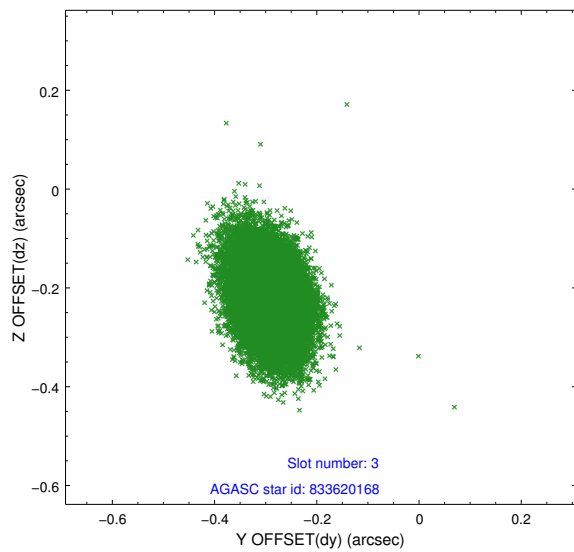


Slot Statistics

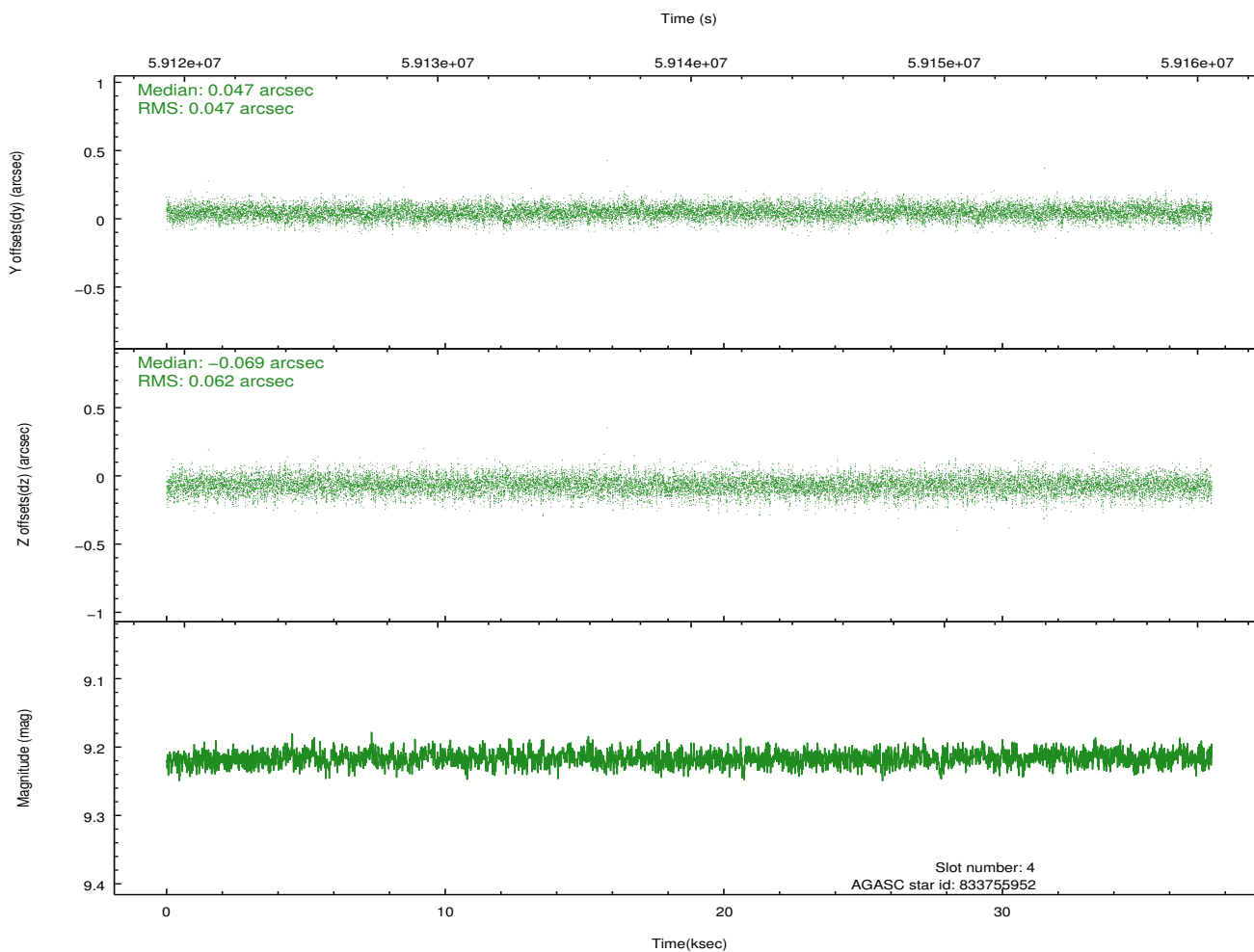
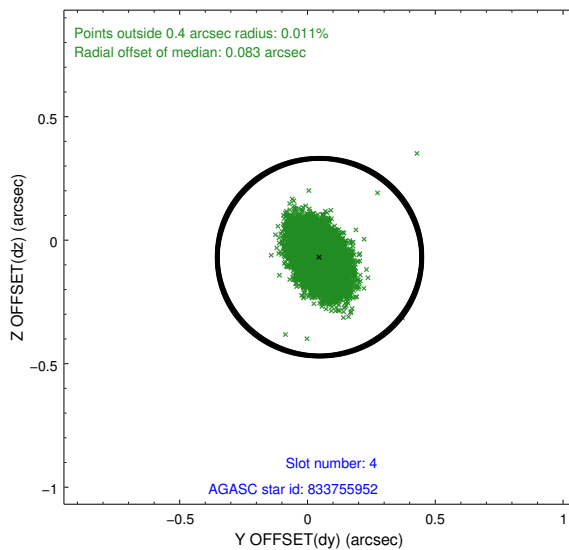
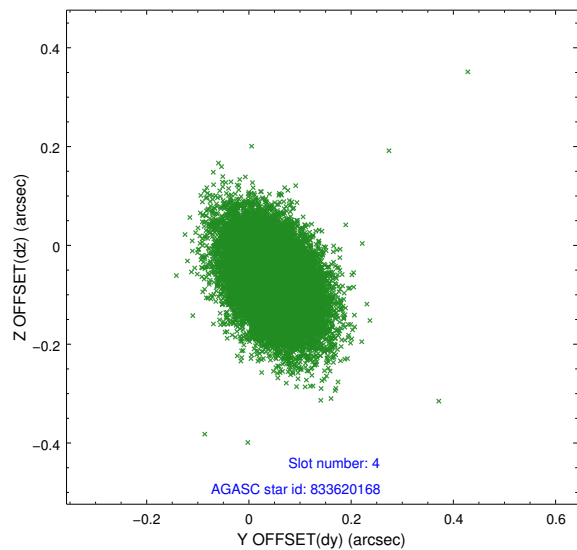
slot	status	id	mag	n_pts	med_dy	med_dz	dr1	dr2	ra	dec	mean_y	mean_z
0	FID	ACIS-S-2	7.12	18302	0.007	-0.016	0.007	0.012	0.000000	0.000000	-752.55	-1724.55
1	FID	ACIS-S-4	7.21	18301	0.043	0.001	0.007	0.012	0.000000	0.000000	2160.85	183.92
2	FID	ACIS-S-5	7.24	18301	-0.081	0.024	0.007	0.014	0.000000	0.000000	-1805.50	177.67
3	GUIDE	833620168	7.76	18297	-0.294	-0.221	0.078	0.132	321.612702	-15.245221	-2043.40	-1759.37
4	GUIDE	833755952	9.22	18293	0.047	-0.069	0.080	0.138	322.154140	-16.150452	1639.05	-995.75
5	GUIDE	833755768	8.74	18290	-0.193	0.110	0.086	0.143	322.486461	-15.157437	-1391.97	1222.61
6	GUIDE	833757536	9.82	18295	0.202	-0.012	0.106	0.177	322.243071	-16.086890	1518.57	-631.66
7	GUIDE	833751248	10.07	18287	0.234	0.192	0.119	0.194	322.744678	-15.854736	1273.19	1279.56

2.4 Star Slots

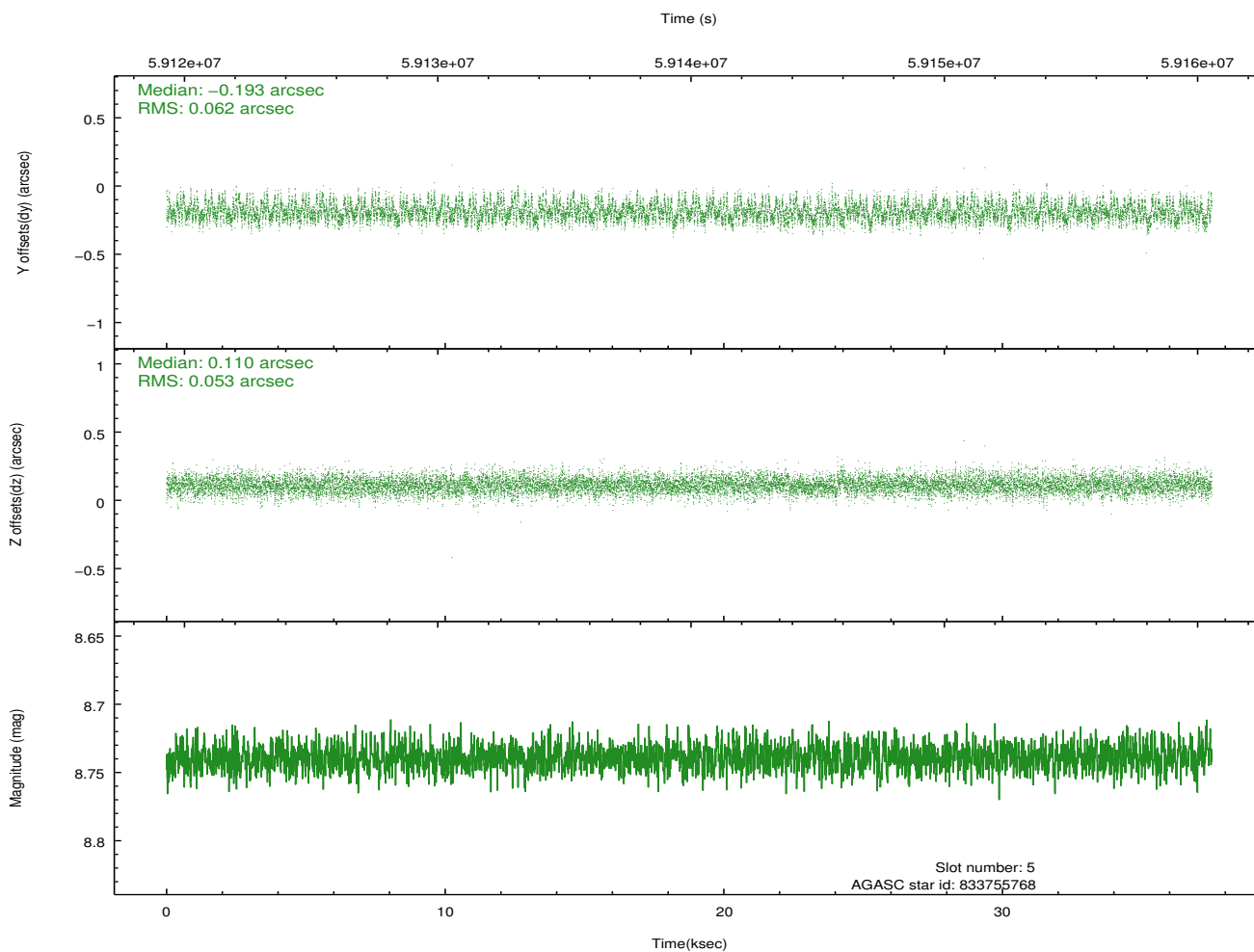
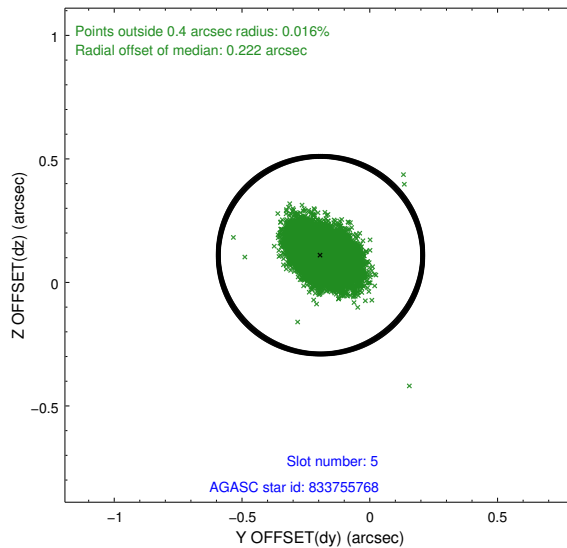
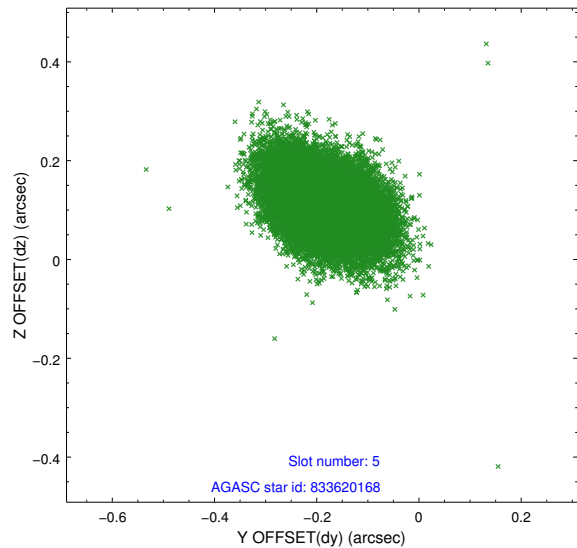
2.4.1 Slot 3



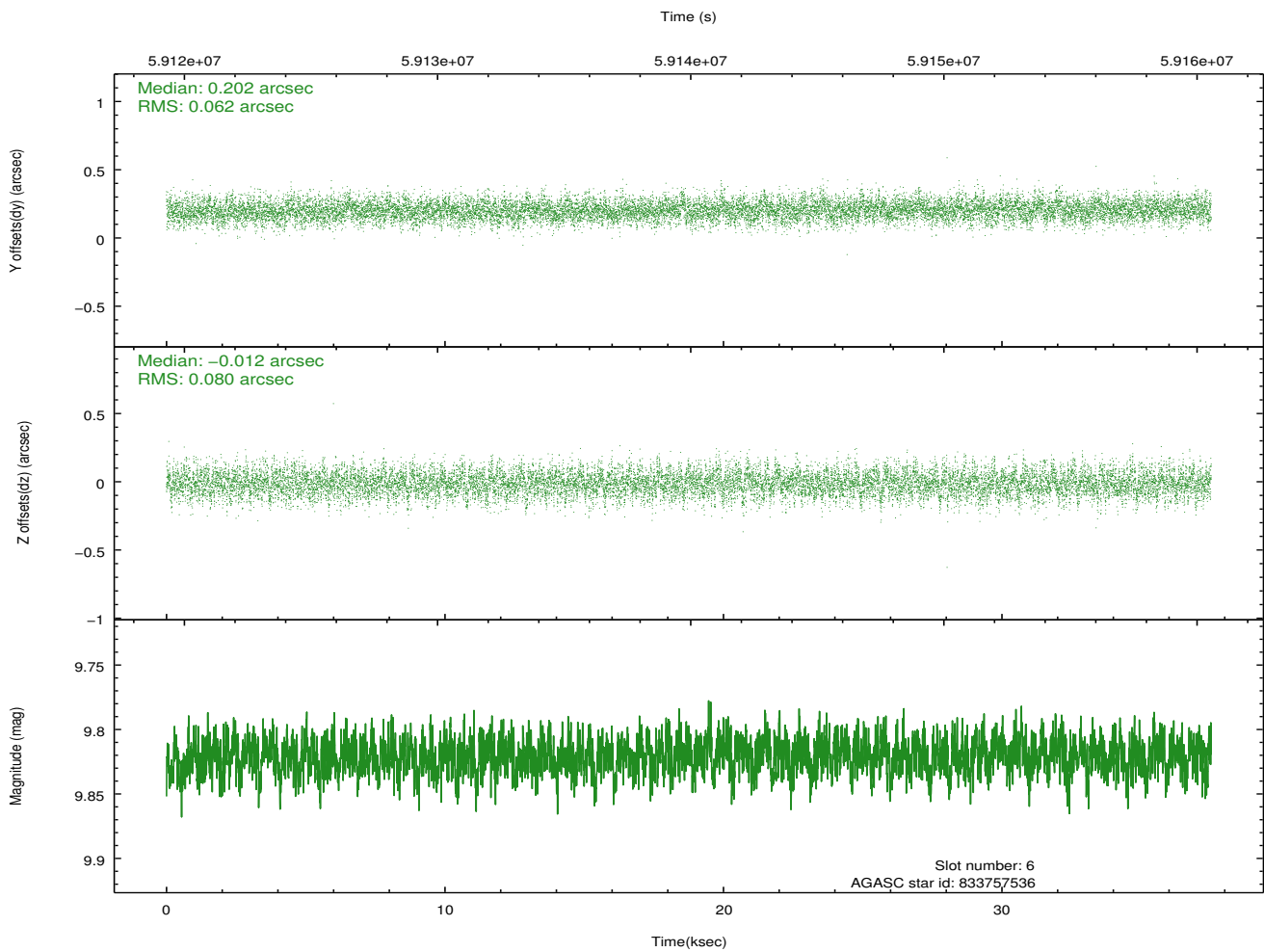
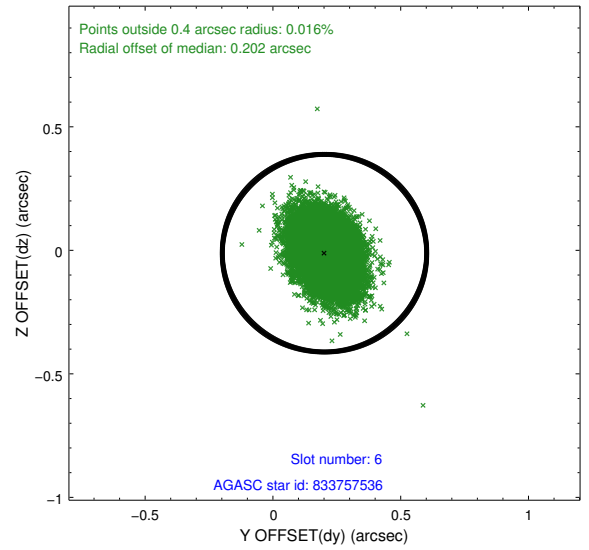
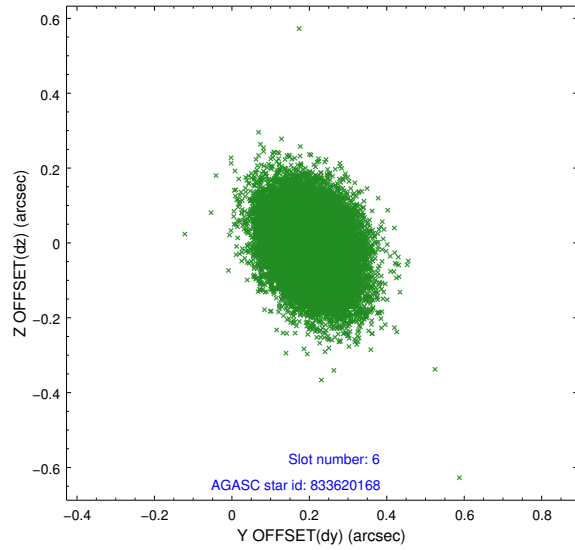
2.4.2 Slot 4



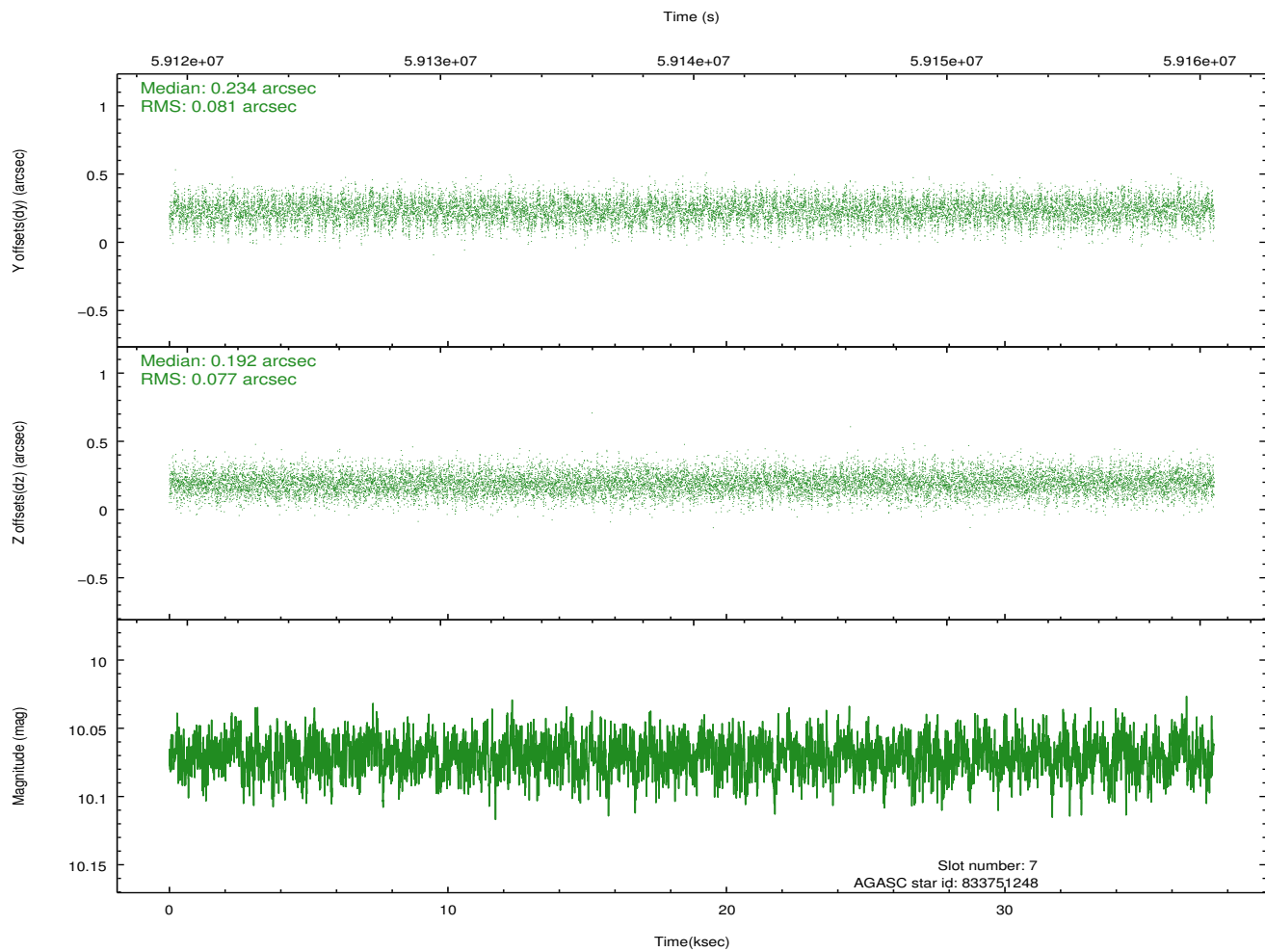
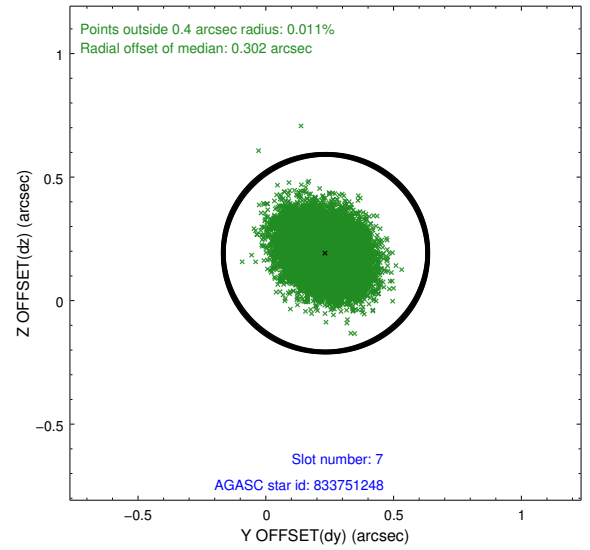
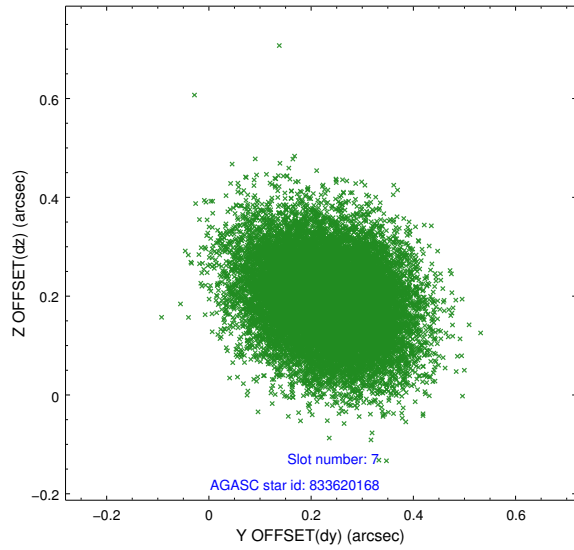
2.4.3 Slot 5



2.4.4 Slot 6

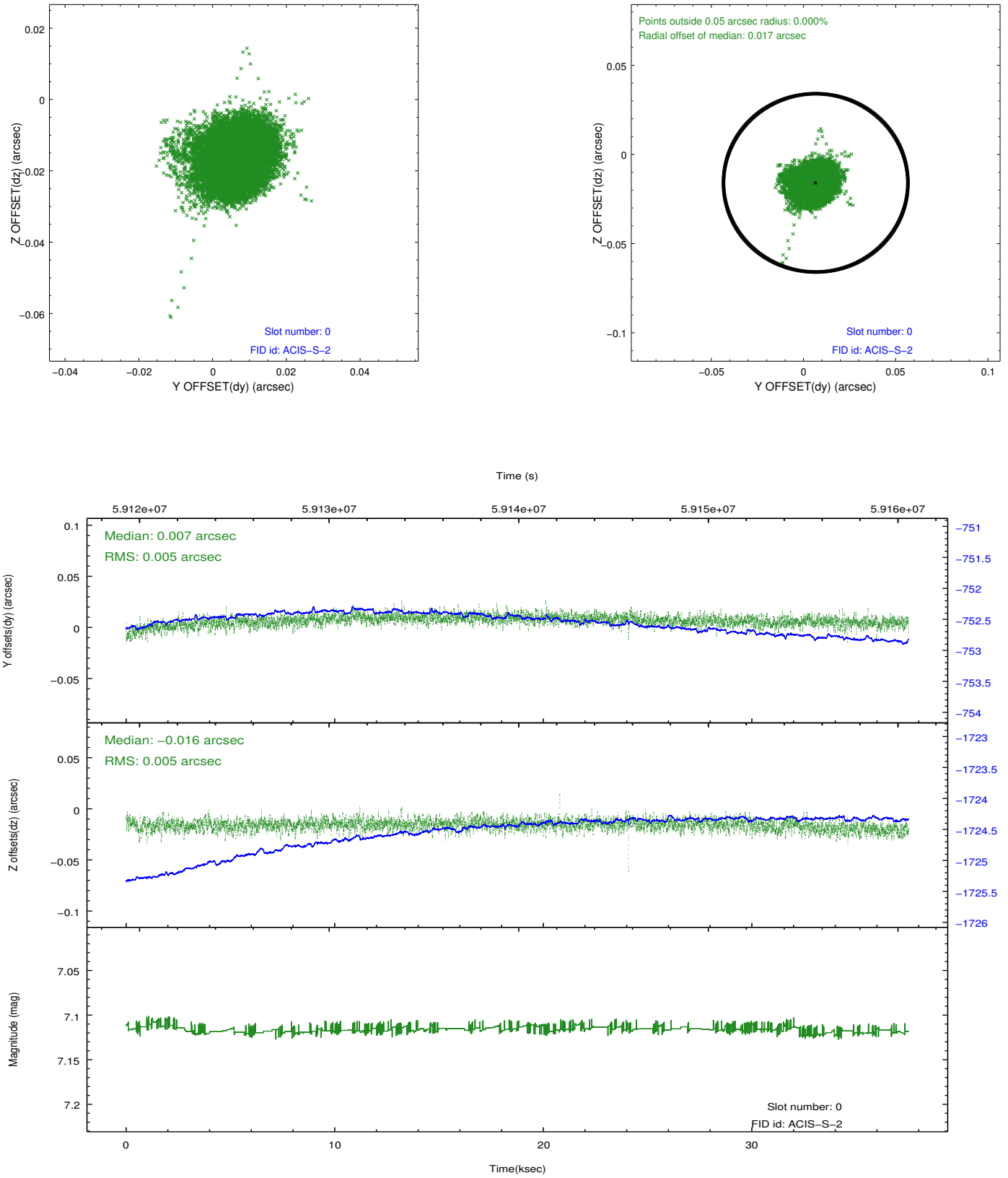


2.4.5 Slot 7

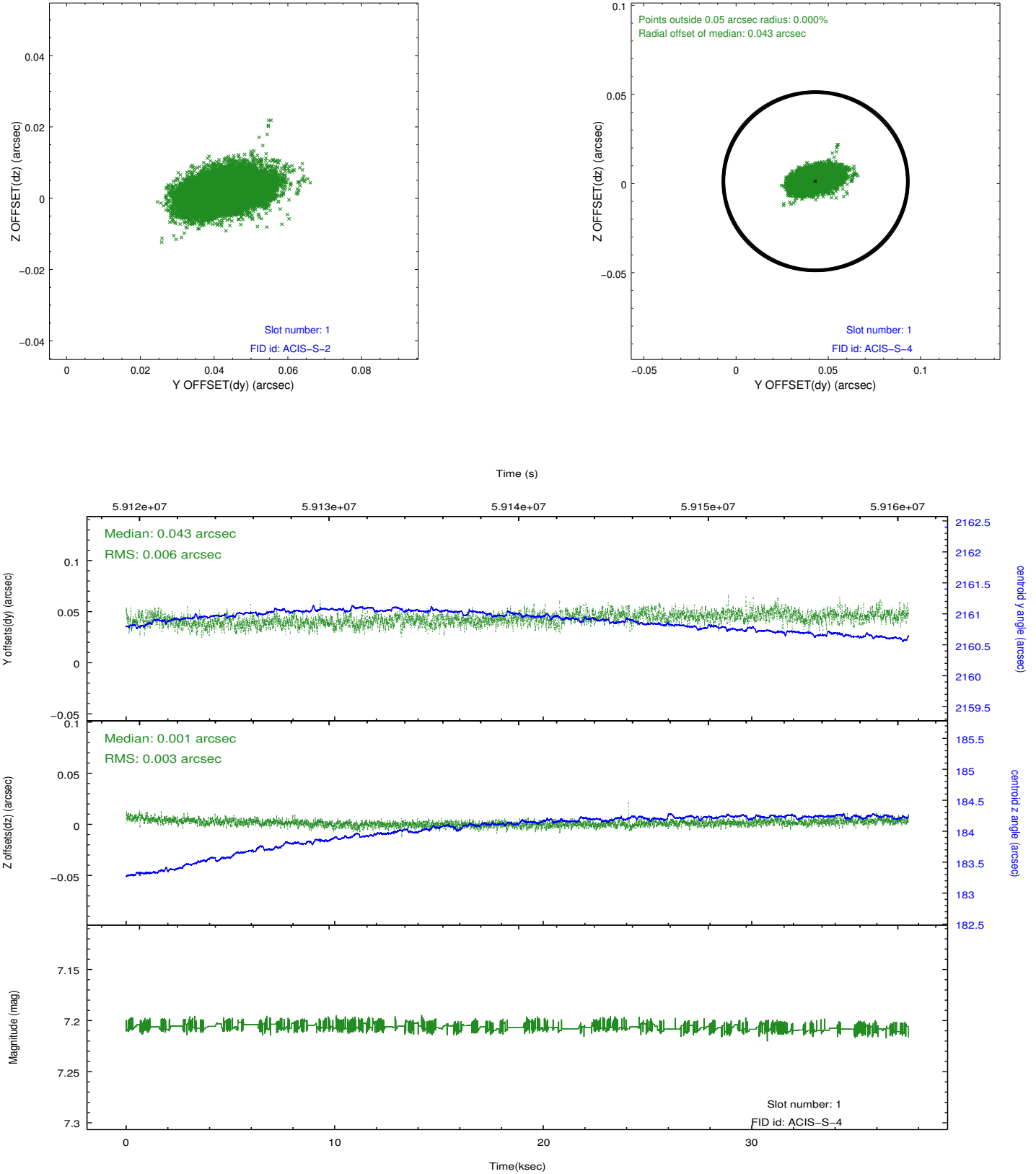


2.5 FID Slots

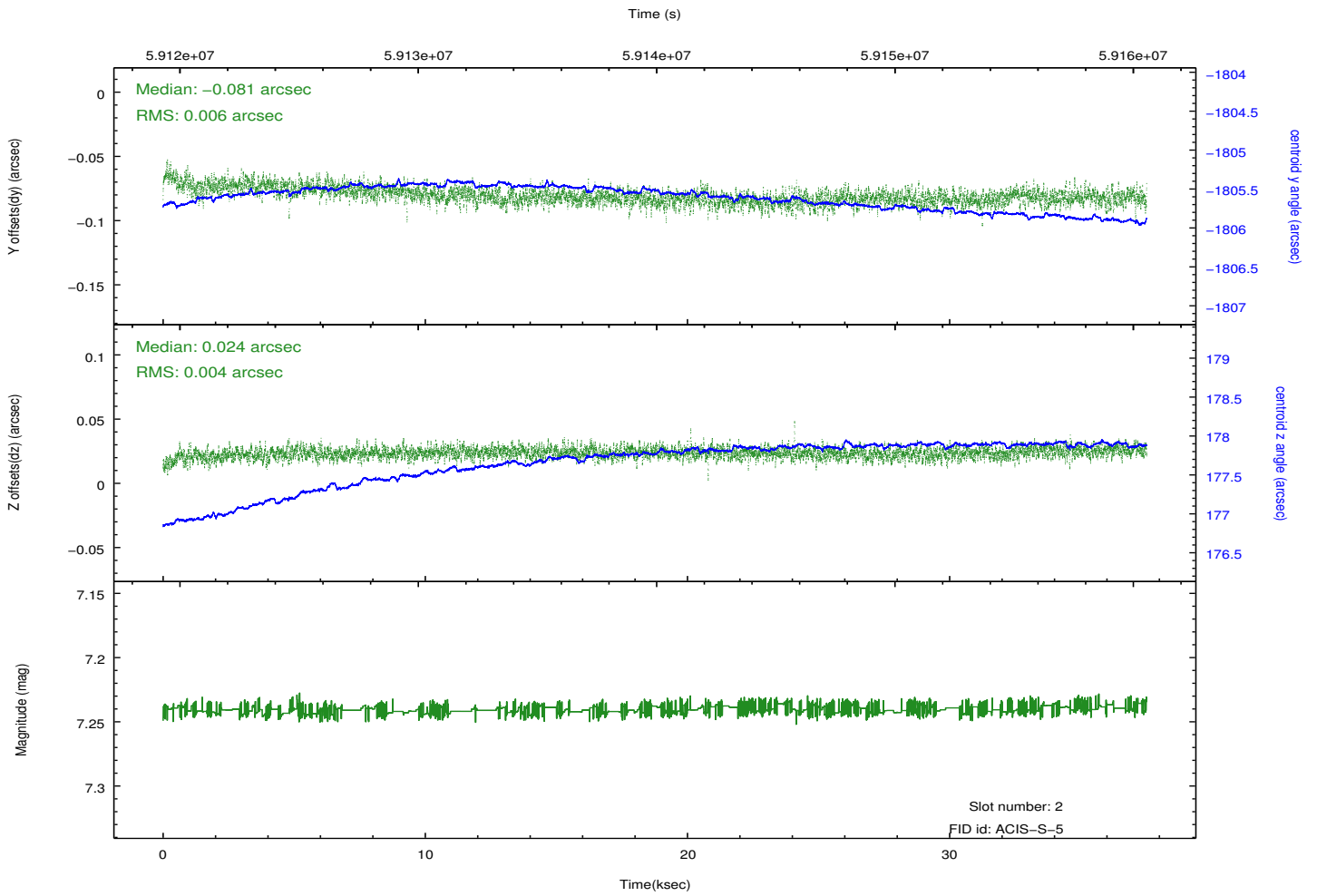
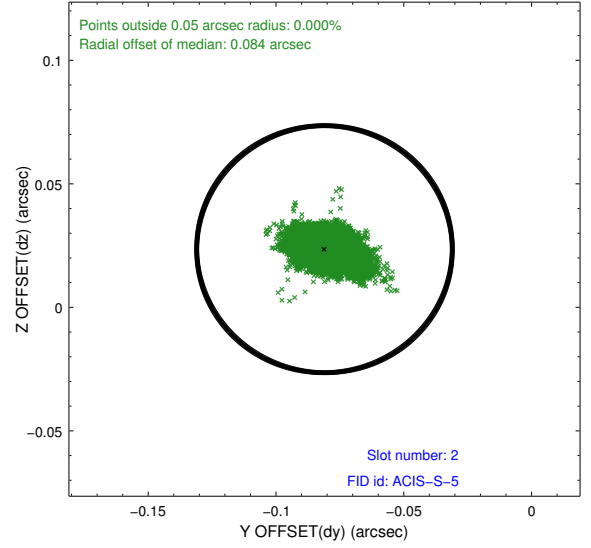
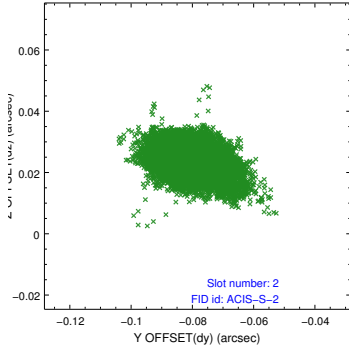
2.5.1 Slot 0



2.5.2 Slot 1

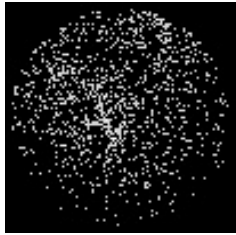


2.5.3 Slot 2



3 Point Sources

10.14 arcmin



10.11 arcmin



A Summary

A.1 Status

V&V Scientist	Beth Sundheim
V&V Date (YYYY-MM-DD)	2009.12.03
V&V Edition	1
V&V Disposition and Status	OK
V&V Charge Time	36.933

A.2 Comments

This observation was acquired with the focal plane temperature raised from -120C to -110C, for attempted recalibration of ACIS for the 1999-09-16 through 2000-01-28 period. This reprocessing of the data applies no CTI correction because none is available for that temperature.