

# V&V Reference Report

## L2 ASCDS Version : 8.4.5

Observation 3986 - L2 Version 3  
Chandra X-Ray Center

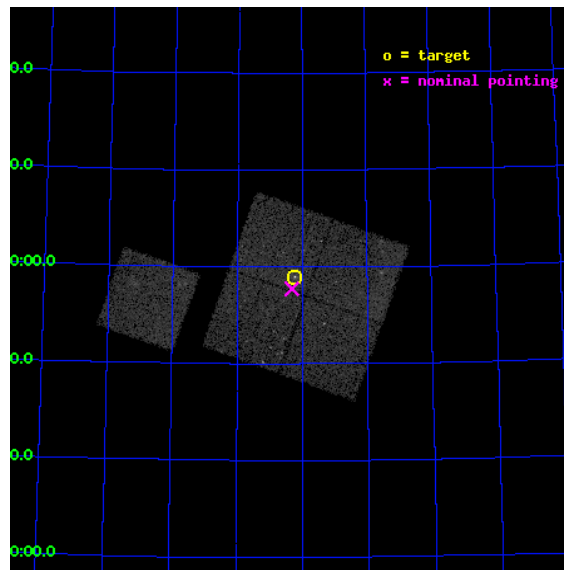
L2 Processing Date : Oct 31 2012

## Contents

<b>1</b>	<b>Front</b>	<b>2</b>
<b>2</b>	<b>OBI</b>	<b>3</b>
2.1	OBI . . . . .	3
2.1.1	Images . . . . .	3
2.1.2	Bias . . . . .	3
2.1.3	Parameters . . . . .	4
2.1.4	Events . . . . .	4
2.2	Compared Parameters . . . . .	5
2.3	Aspect . . . . .	6
2.4	Star Slots . . . . .	9
2.4.1	Slot 3 . . . . .	9
2.4.2	Slot 4 . . . . .	10
2.4.3	Slot 5 . . . . .	11
2.4.4	Slot 6 . . . . .	12
2.4.5	Slot 7 . . . . .	13
2.5	FID Slots . . . . .	14
2.5.1	Slot 0 . . . . .	14
2.5.2	Slot 1 . . . . .	15
2.5.3	Slot 2 . . . . .	16
<b>A</b>	<b>Summary</b>	<b>17</b>
A.1	Status . . . . .	17
A.2	Comments . . . . .	17

# 1 Front

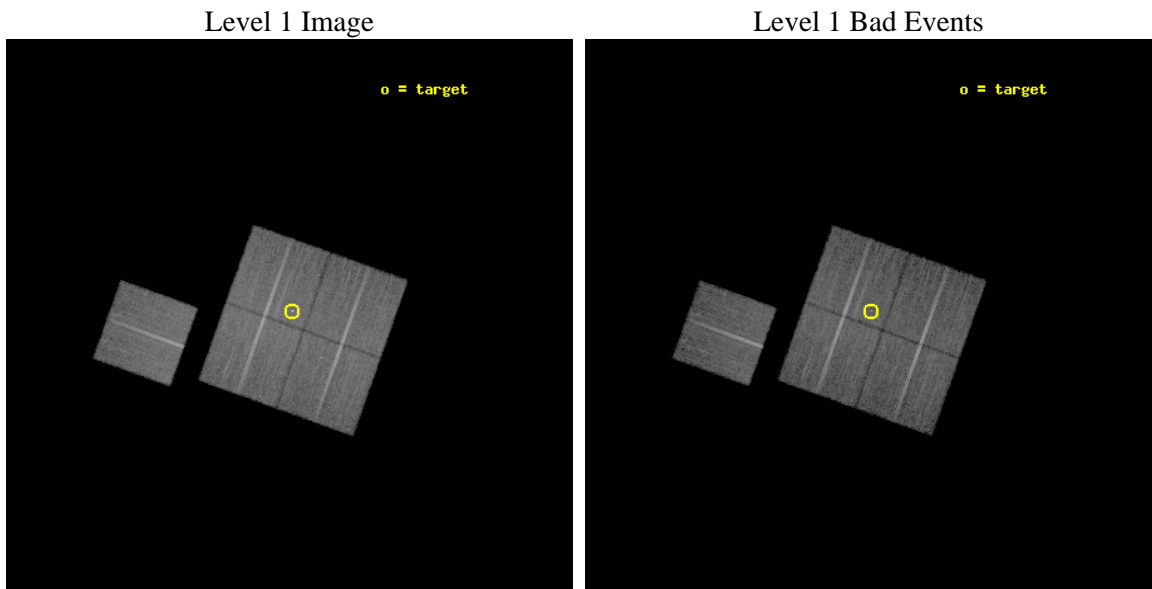
seq_num	700665	Sequence number
obs_id	3986	Observation id
title	DO QSO EXTENDED EMISSION REGIONS RESULT FROM COOLING FLOWS?	Propos
observer	Dr Alan Stockton	Principal investigator
object	3C 249.1 FIELD	Source name
dtycycle	0	&#160
cycle	P	events from which exps? Prim/Second/Both
ra_targ	166.057083	Observer's specified target RA [deg]
dec_targ	76.982806	Observer's specified target Dec [deg]
ra_nom	166.08060759598	Nominal RA [deg]
dec_nom	76.962447829181	Nominal Dec [deg]
roll_nom	289.69351099936	Nominal Roll [deg]
revision	3	Processing version of data
ontime	24358.32461372	Sum of GTIs [s]
livetime	24040.065170304	Livetime [s]
ontime0	24358.20149371	Sum of GTIs [s]
ontime1	24358.24252376	Sum of GTIs [s]
ontime2	24361.424533963	Sum of GTIs [s]
ontime3	24358.32461372	Sum of GTIs [s]
ontime6	24358.160453707	Sum of GTIs [s]
l2events	56395	Number of level 2 events



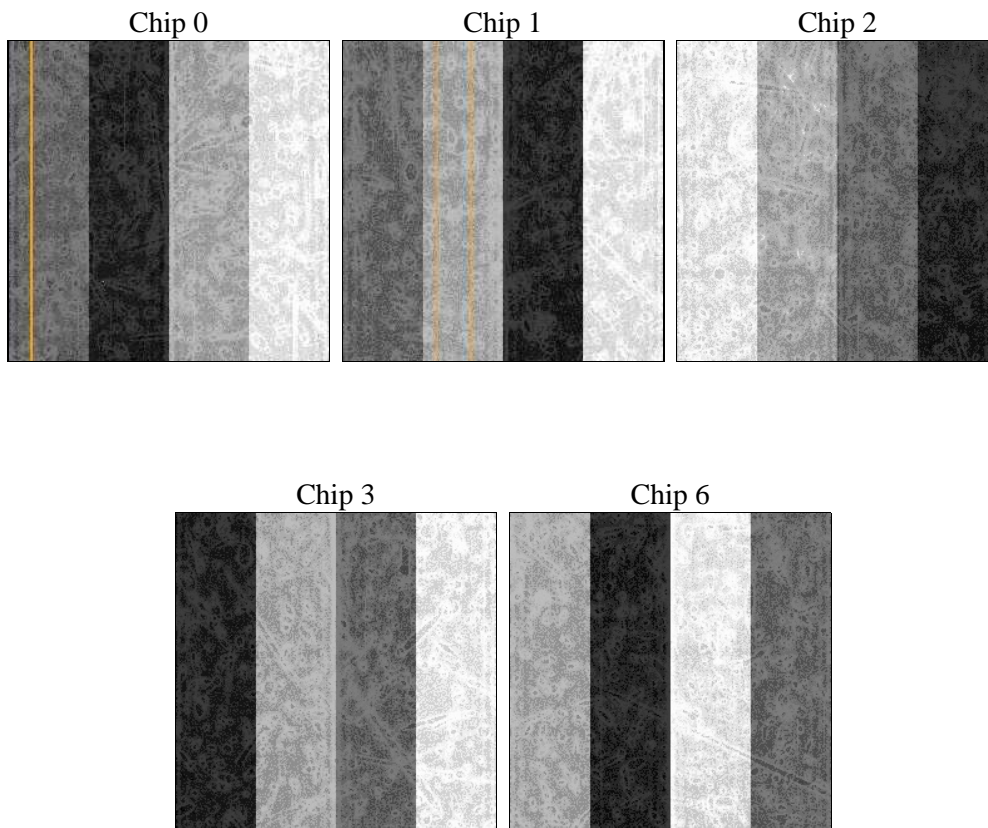
## 2 OBI

### 2.1 OBI

#### 2.1.1 Images



#### 2.1.2 Bias



### 2.1.3 Parameters

obi_num	1	Obi number	sched_exp_time	24500.000000	[s] Scheduled observation exposure time
ascdsver	8.4.5	Processing system revision	ontime	24358.32461372	Sum of GTIs [s]
caldbver	4.5.2	&#160	ontime0	24358.20149371	Sum of GTIs [s]
date	2012-10-31T05:19:31	Date and time of file creation	ontime1	24358.24252376	Sum of GTIs [s]
revision	3	Processing version of data	ontime2	24361.424533963	Sum of GTIs [s]
			ontime3	24358.32461372	Sum of GTIs [s]
			ontime6	24358.160453707	Sum of GTIs [s]
			l1events	605830	Number of level 1 events

### 2.1.4 Events

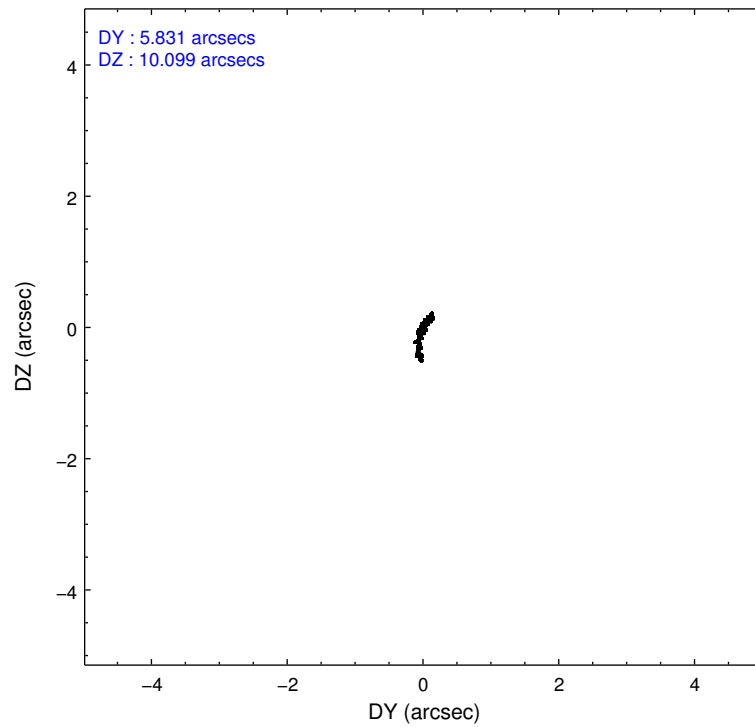
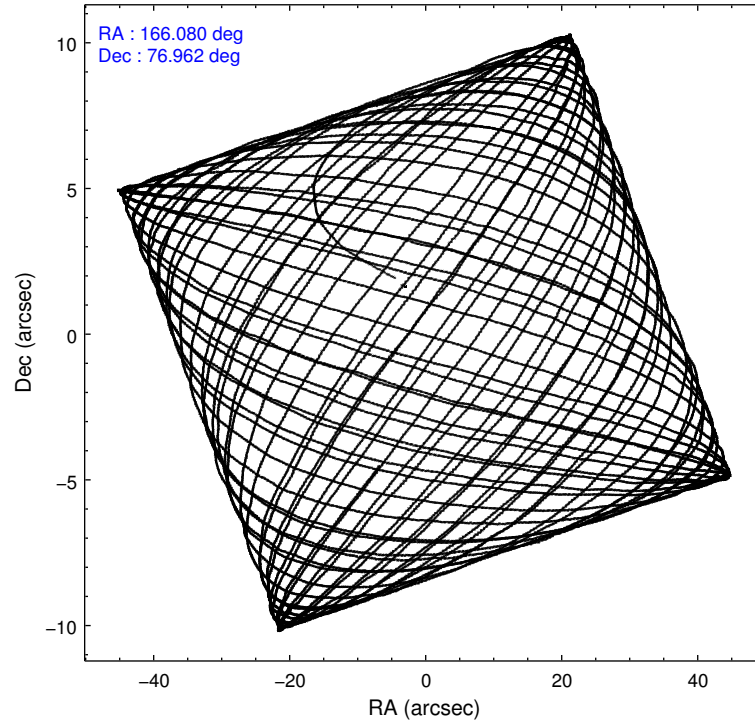
	ccd 0	ccd 1	ccd 2	ccd 3	ccd 6
level 1 events	112343	113523	129538	129136	121290
rejected events	100411	99930	117129	112447	108951
rejected %	89%	88%	90%	87%	89%

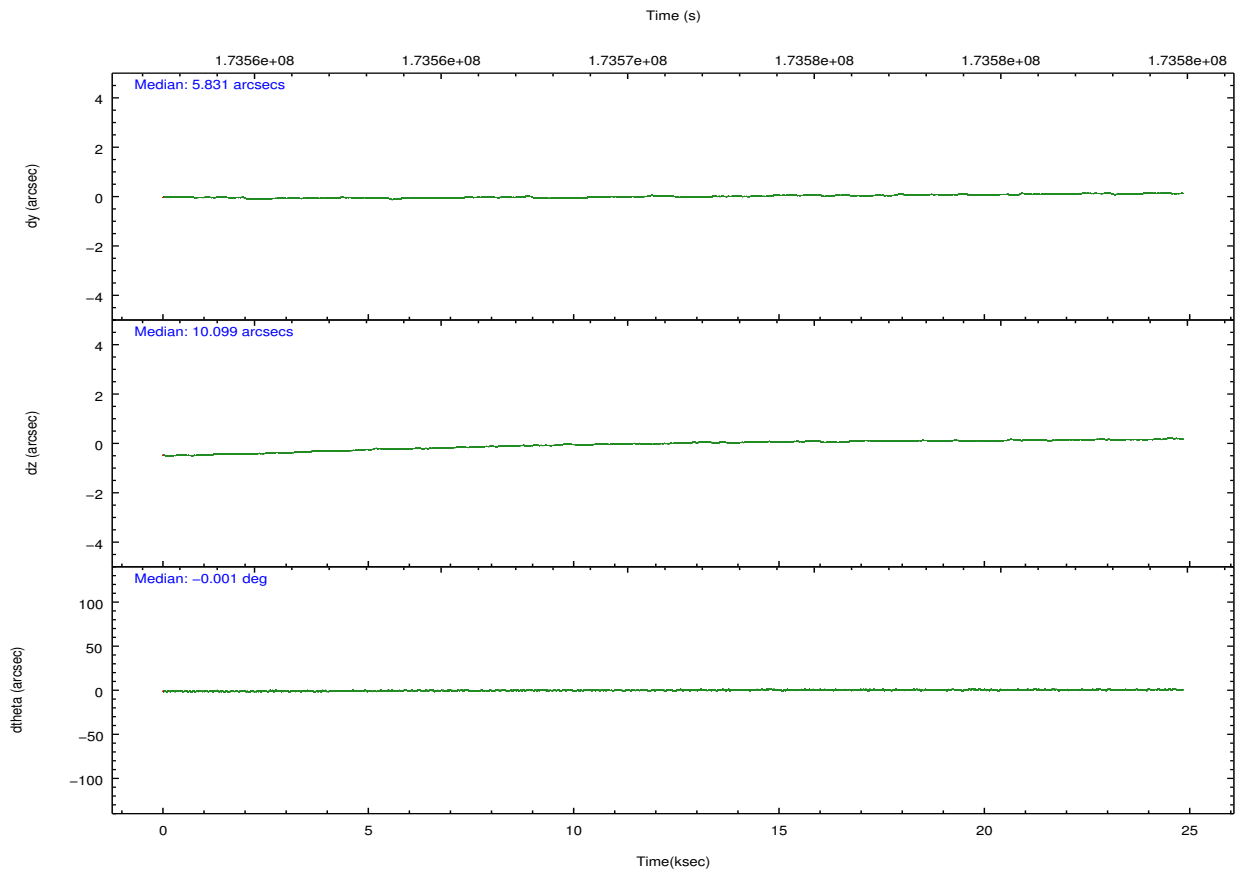
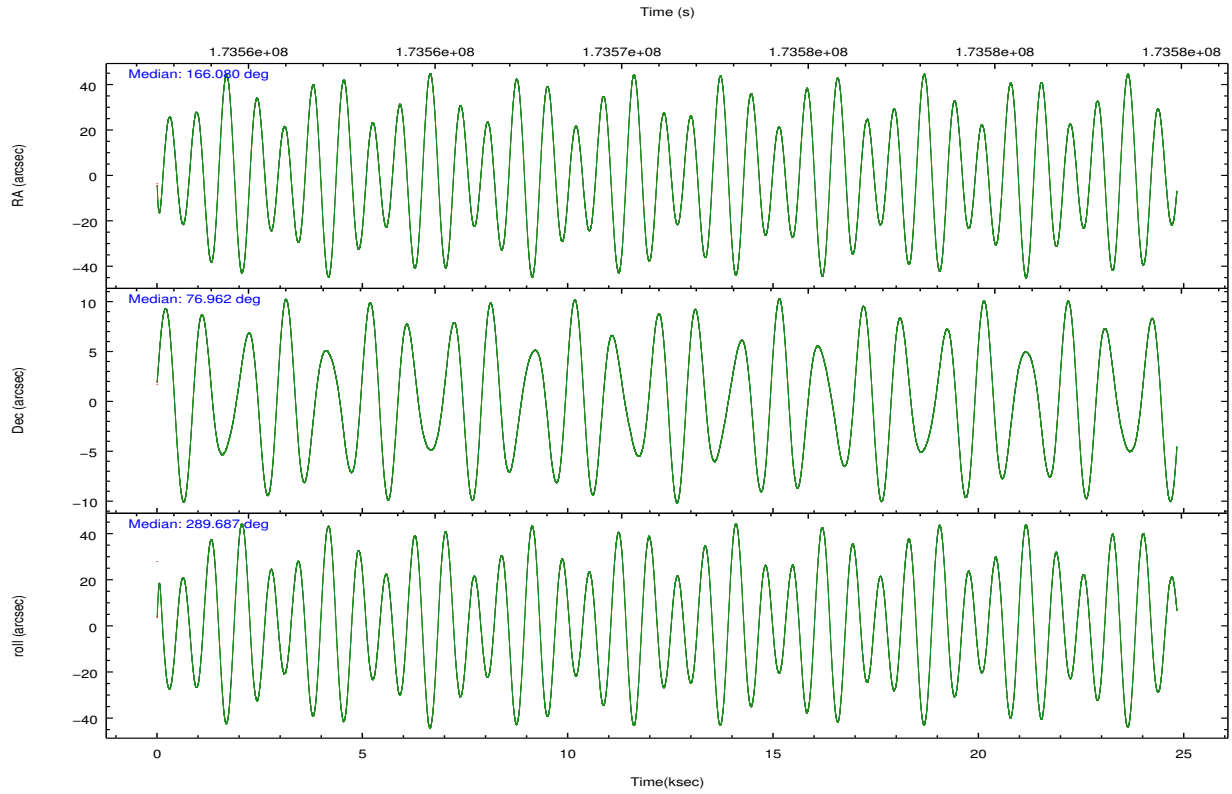
	ccd 0	ccd 1	ccd 2	ccd 3	ccd 6
grade 0 events	4225	4887	4714	7761	4172
	3%	4%	3%	6%	3%
grade 1 events	52	58	63	439	37
	0%	0%	0%	0%	0%
grade 2 events	2763	2878	2898	3215	2638
	2%	2%	2%	2%	2%
grade 3 events	1433	1602	1368	1549	1485
	1%	1%	1%	1%	1%
grade 4 events	1246	1474	1307	1572	1438
	1%	1%	1%	1%	1%
grade 5 events	4239	4545	4071	4942	4737
	3%	4%	3%	3%	3%
grade 6 events	2267	2752	2123	2593	2606
	2%	2%	1%	2%	2%
grade 7 events	96118	95327	112994	107065	104177
	85%	83%	87%	82%	85%

## 2.2 Compared Parameters

Parameter	Planned	Actual	Parameter	Planned	Actual
Instrument	ACIS	ACIS	Obspar format version number	7	7
Detector	ACIS-01236	ACIS-01236	Obspar file type	PREDICTED	ACTUAL
Grating	NONE	NONE	Obspar update status	NONE	UPDATED
Data mode	VFAINT	VFAINT	Number of optional ACIS chips dropped	0	0
Observation mode	POINTING	POINTING	On-chip summing requested	N	N
[deg] Pointing RA	165.987571	166.0806075959797	Subarray requested	NONE	NONE
[deg] Pointing Dec	76.980077	76.96244782918103	Alternating exposures requested	N	N
[deg] Pointing Roll	289.575467	289.6935109993592	[s] Primary exposure time	0.000000	3.1
[mm] SIM focus pos	-0.782348	-0.7809083437167272			
[mm] SIM defocus	0	0.001439871863259334			
[mm] SIM translation stage pos	-230.632463	-230.6305996661941			
[mm] SIM translation stage offset	-2.96	-2.961853336735572			
[s] Observation start time (MET)	173559135.184000	173558104.8209			
Observation start date	2003-07-02T18:51:11	2003-07-02T18:35:04			
[s] Observation end time (MET)	173583635.184000	173584636.43453			
Observation end date	2003-07-03T01:39:31	2003-07-03T01:57:16			
Read mode	TIMED	TIMED			

## 2.3 Aspect



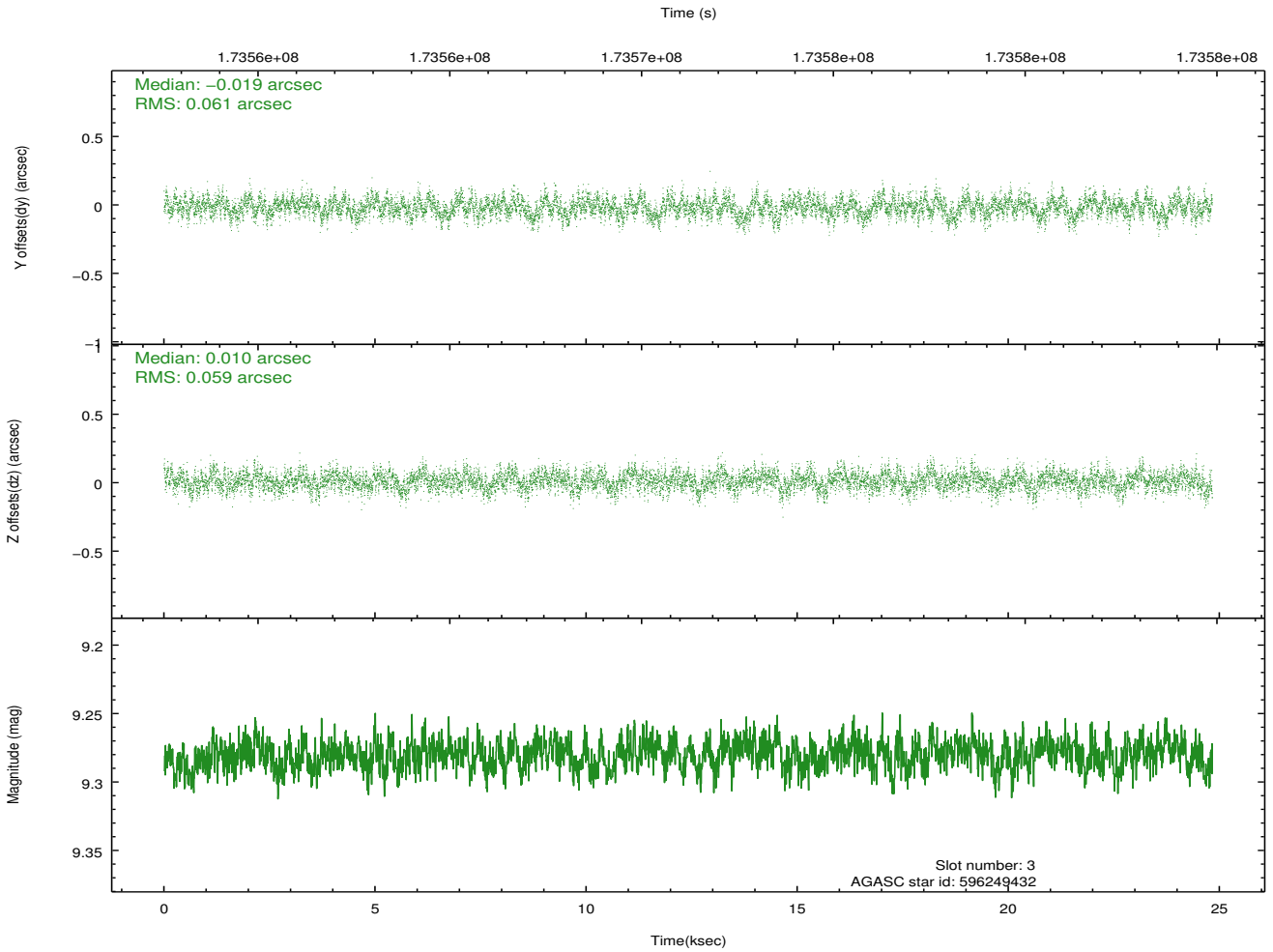
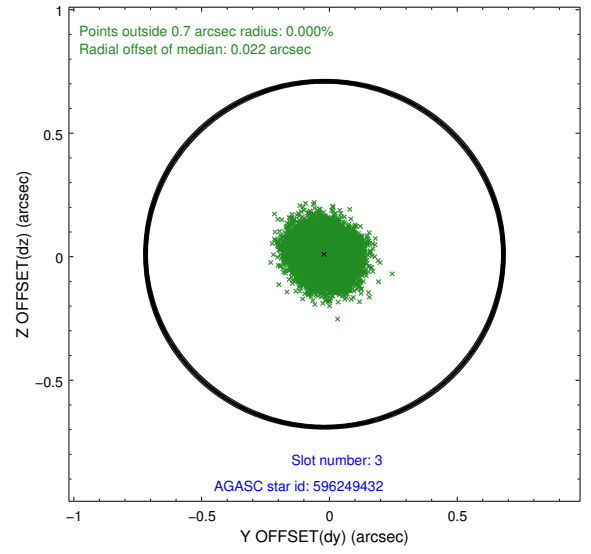
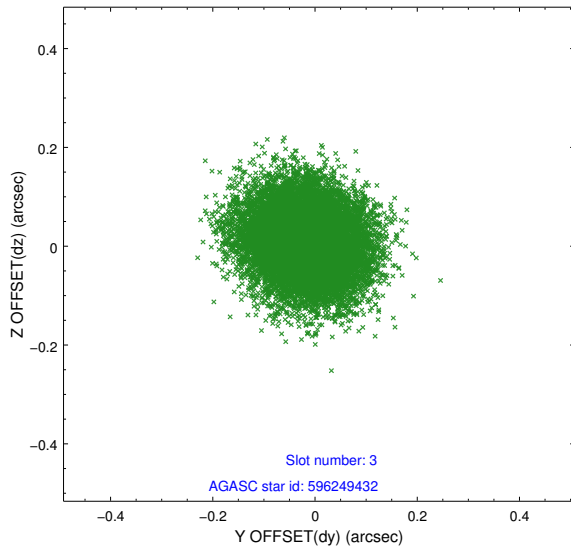


### Slot Statistics

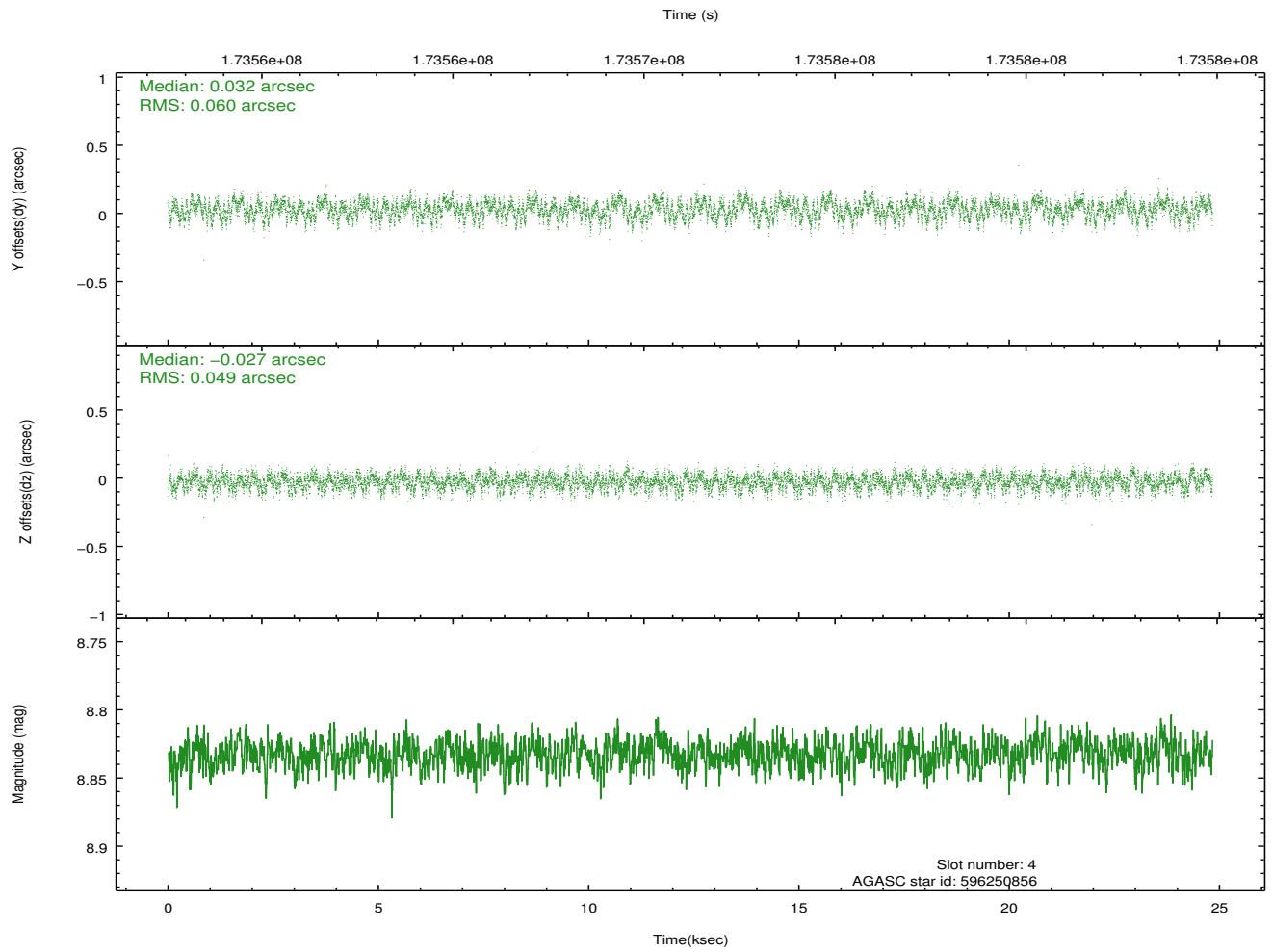
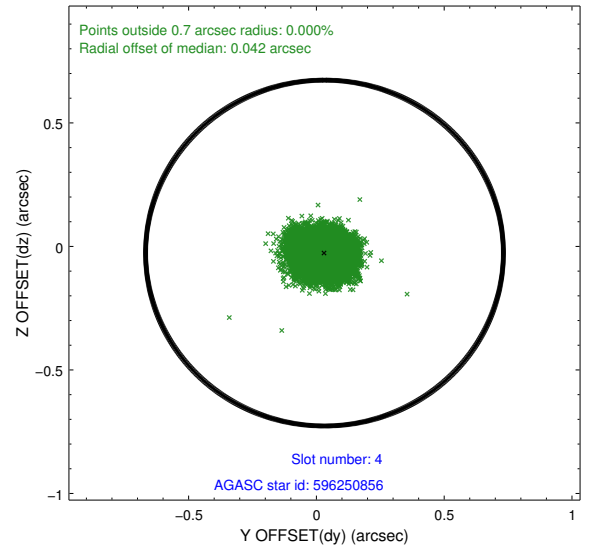
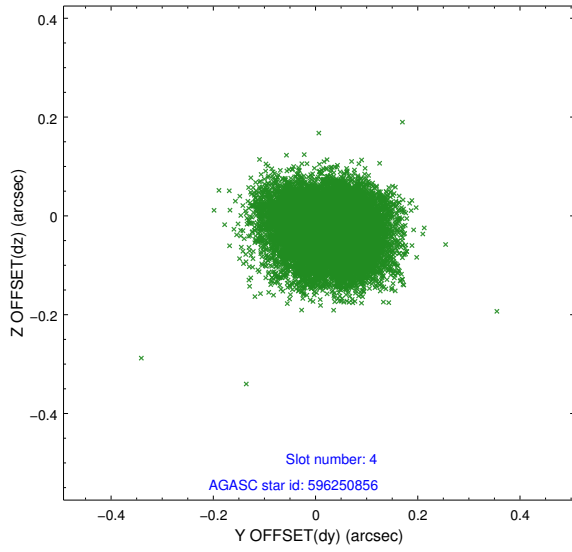
slot	status	id	mag	n_pts	med_dy	med_dz	dr1	dr2	ra	dec	mean_y	mean_z
0	FID	ACIS-I-1	7.23	6057	0.068	-0.025	0.008	0.014	0.000000	0.000000	933.86	-894.29
1	FID	ACIS-I-5	7.23	6057	-0.187	0.080	0.008	0.013	0.000000	0.000000	-1814.39	1003.28
2	FID	ACIS-I-6	7.26	6057	0.028	0.017	0.009	0.016	0.000000	0.000000	399.29	1647.82
3	GUIDE	596249432	9.28	12108	-0.019	0.010	0.091	0.146	167.472994	77.018077	259.34	1182.82
4	GUIDE	596250856	8.83	12113	0.032	-0.027	0.084	0.131	169.278624	76.719793	1722.69	2275.00
5	GUIDE	596254168	9.60	12108	-0.027	0.068	0.085	0.138	164.874149	76.417043	1586.62	-1562.48
6	GUIDE	596254984	8.60	12112	0.019	-0.036	0.055	0.089	165.045925	76.632611	910.68	-1155.30
7	GUIDE	596653344	9.39	12107	-0.002	-0.014	0.079	0.133	166.033958	77.603230	-2101.45	785.15

## 2.4 Star Slots

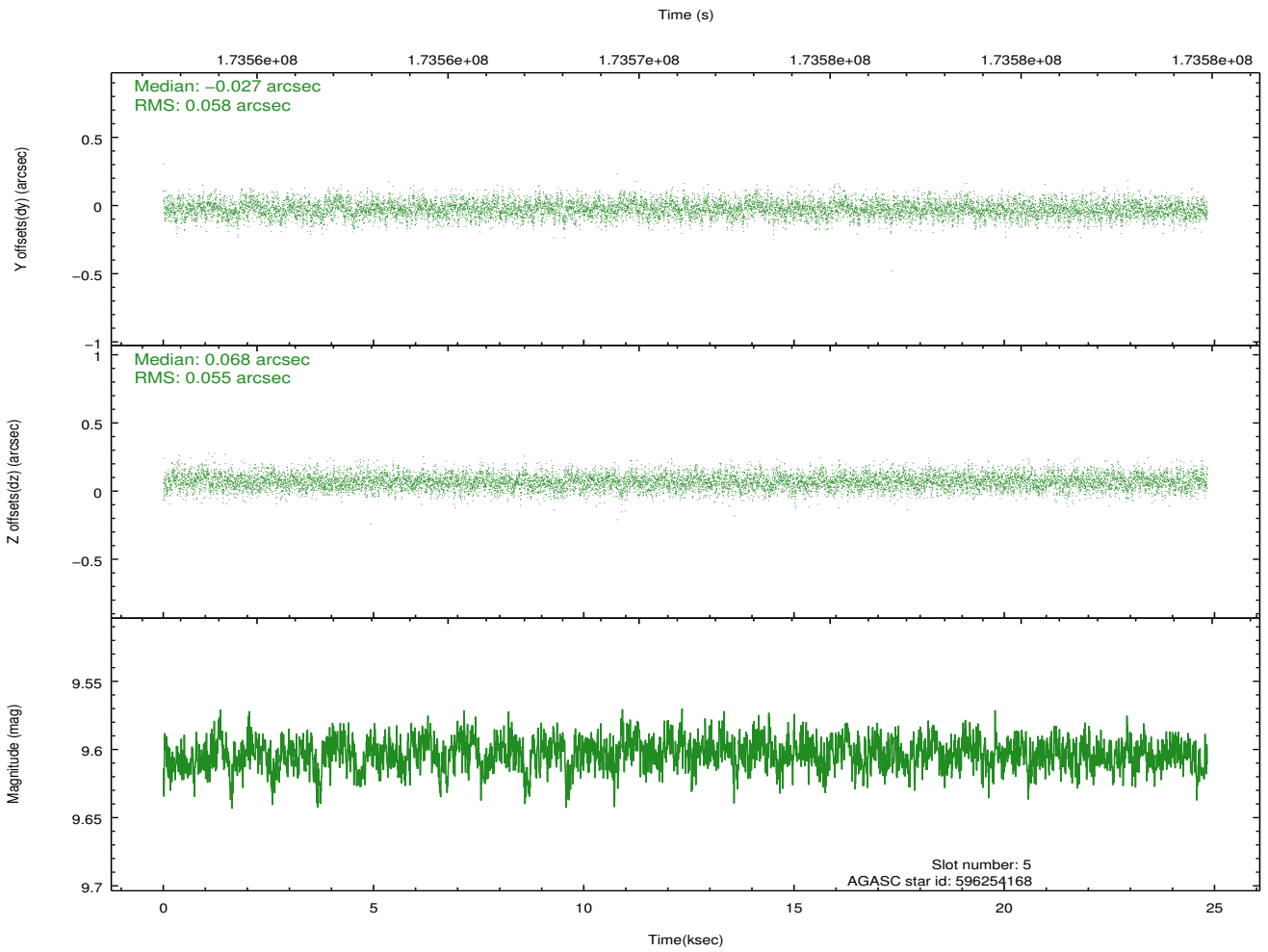
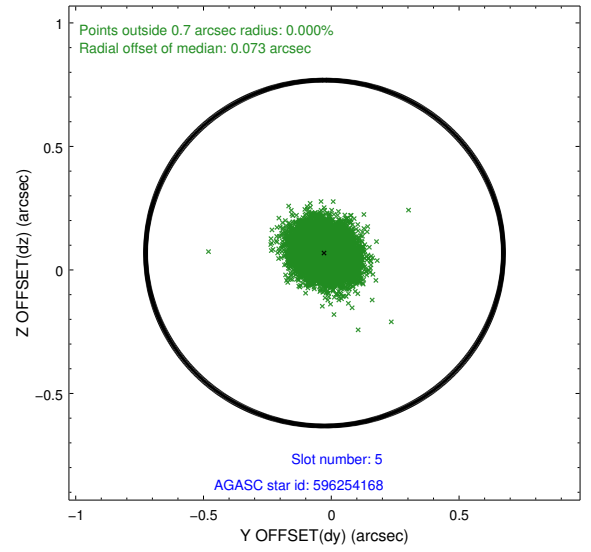
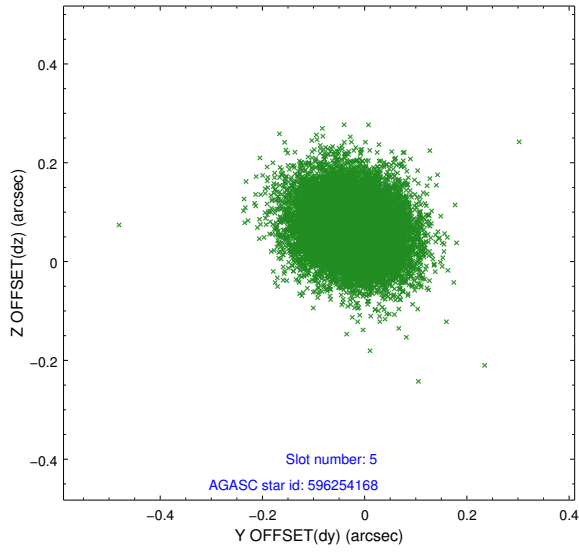
### 2.4.1 Slot 3



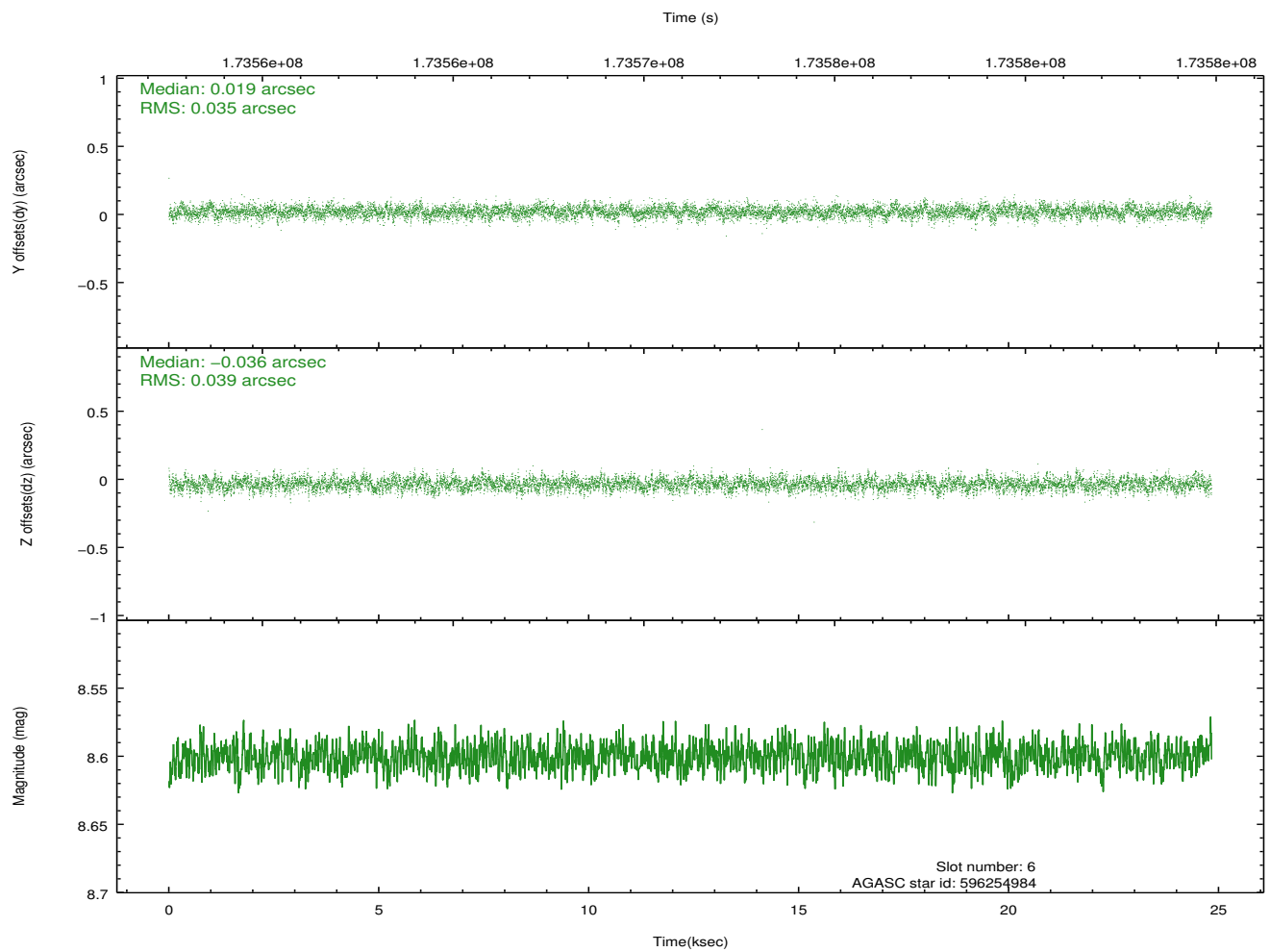
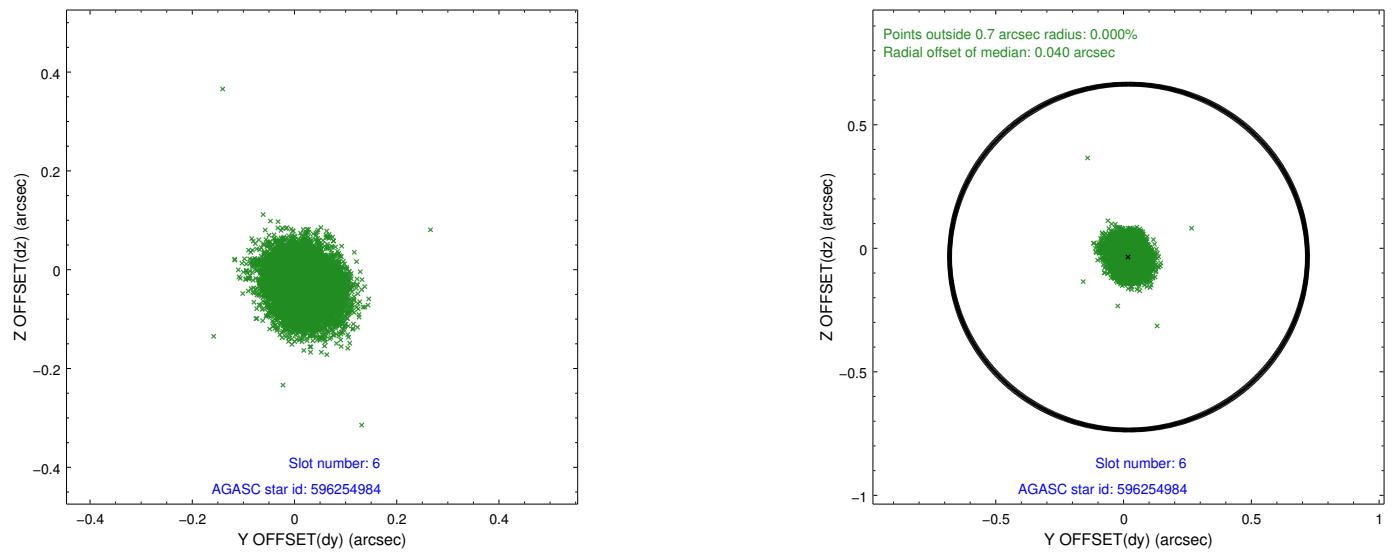
### 2.4.2 Slot 4



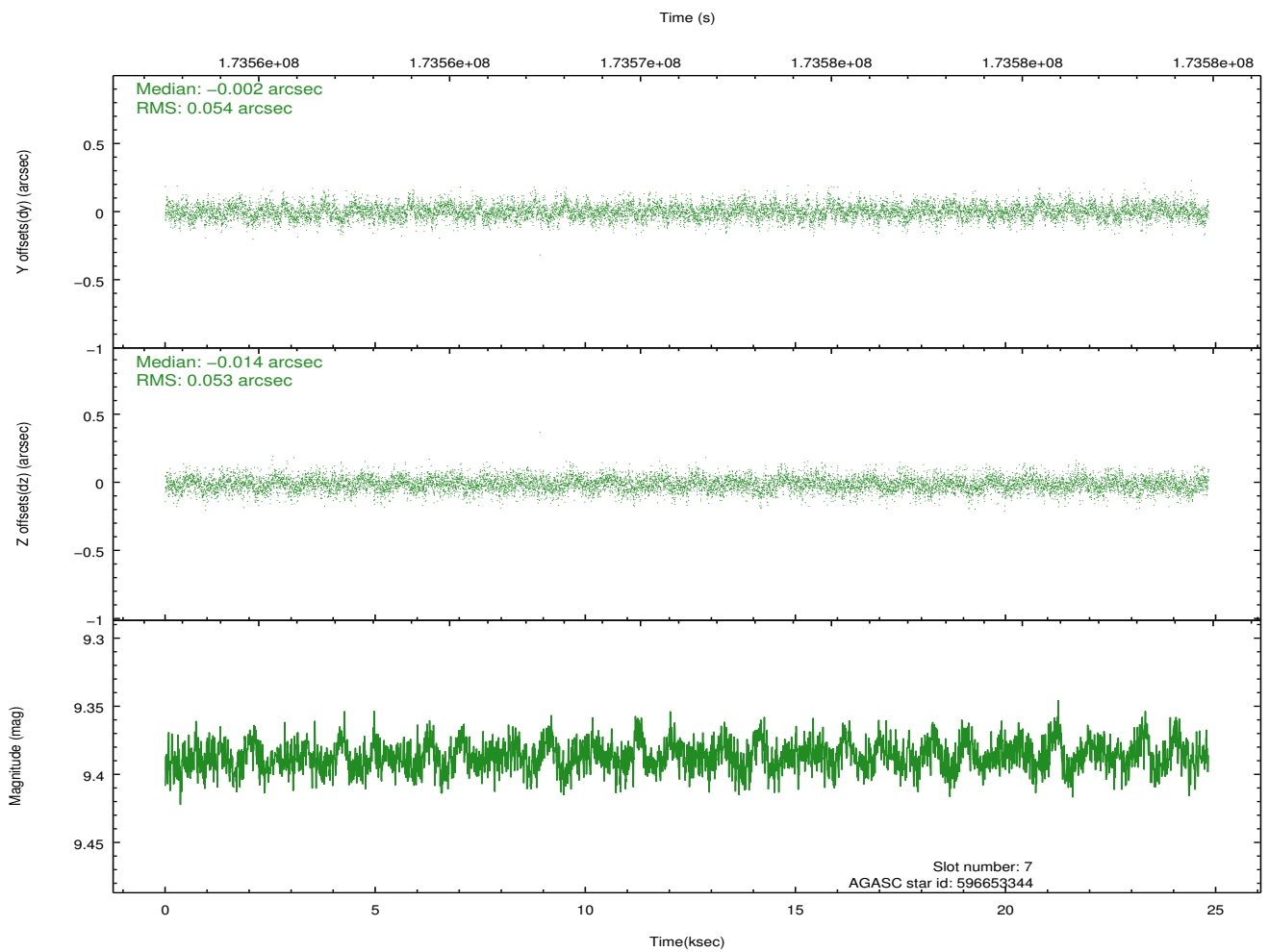
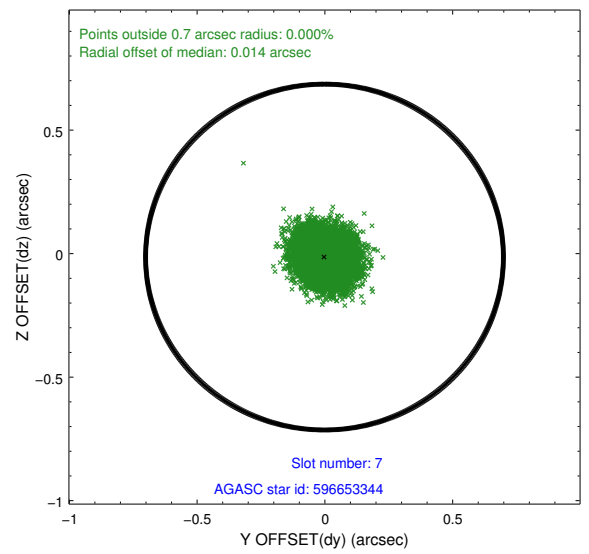
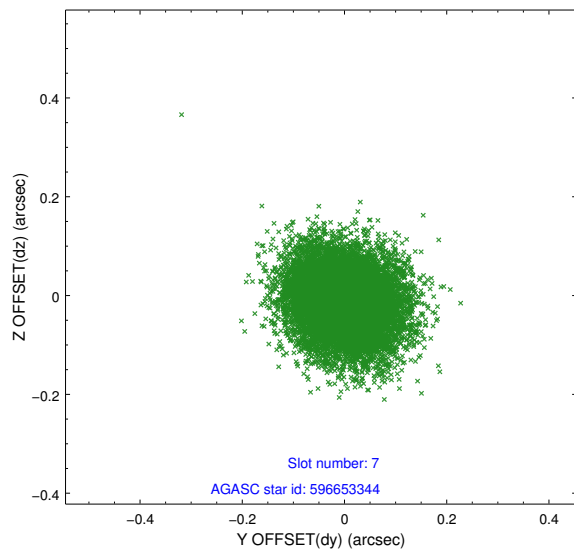
### 2.4.3 Slot 5



## 2.4.4 Slot 6

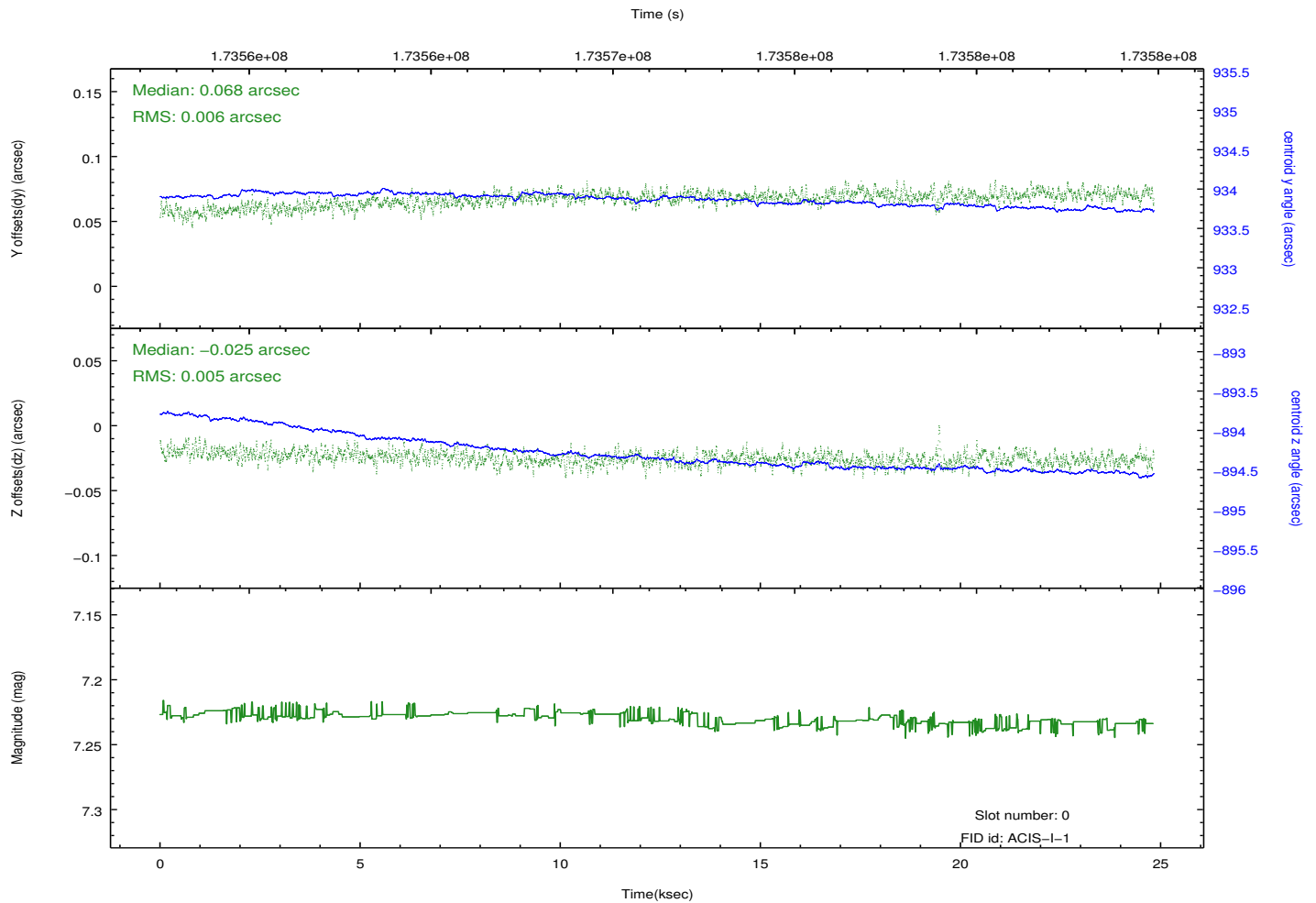
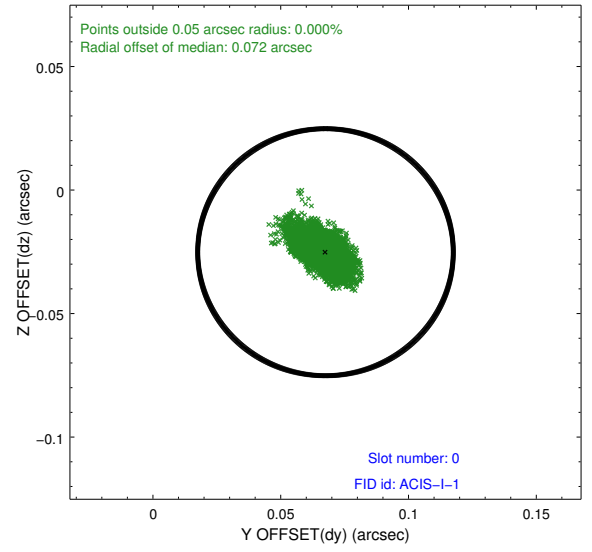
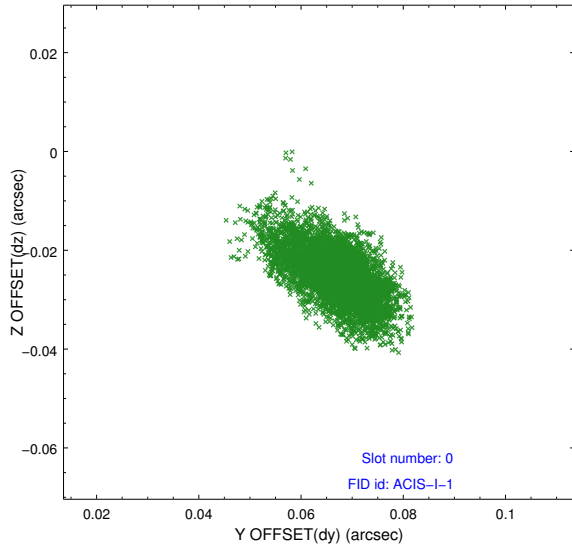


## 2.4.5 Slot 7

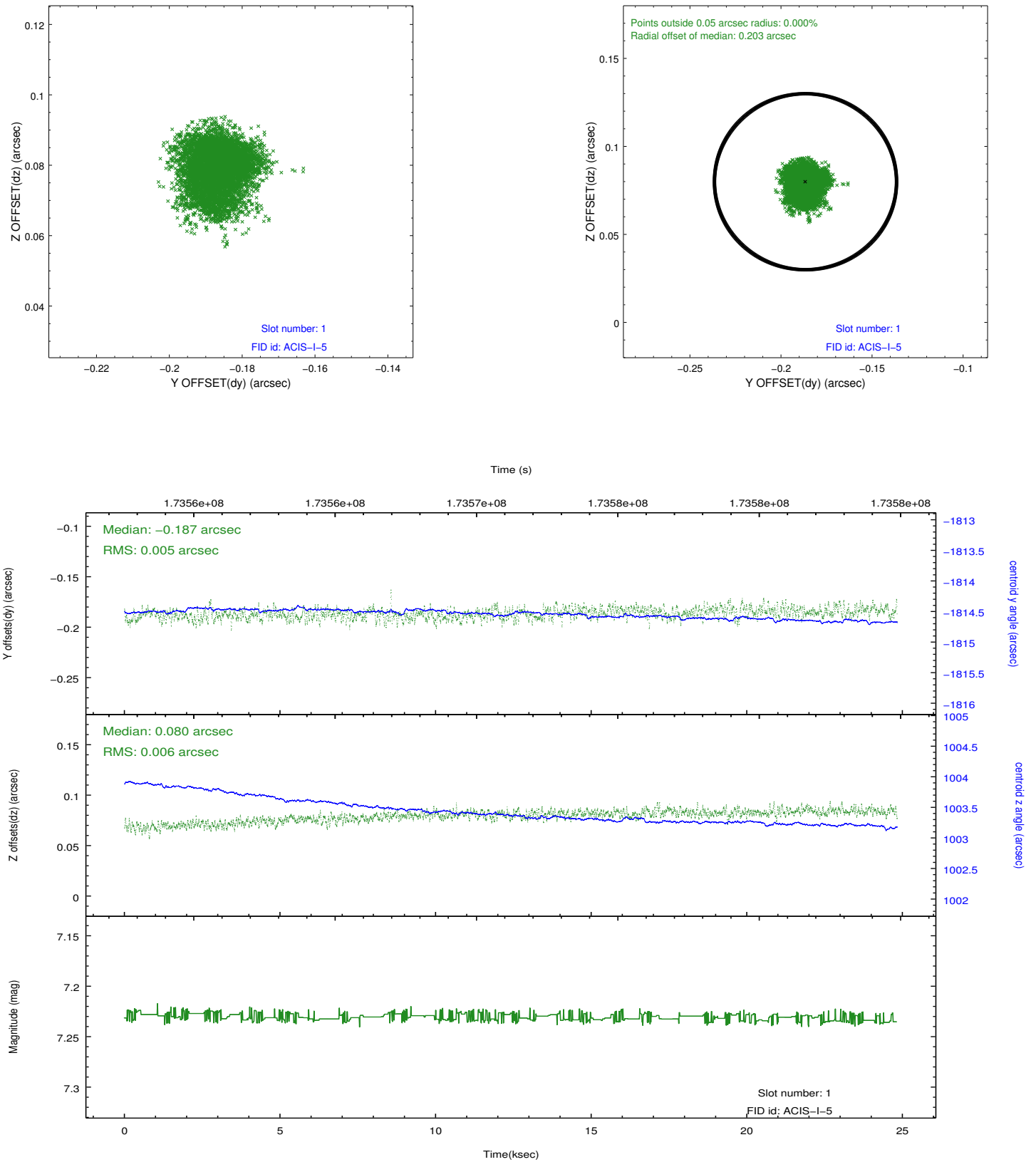


## 2.5 FID Slots

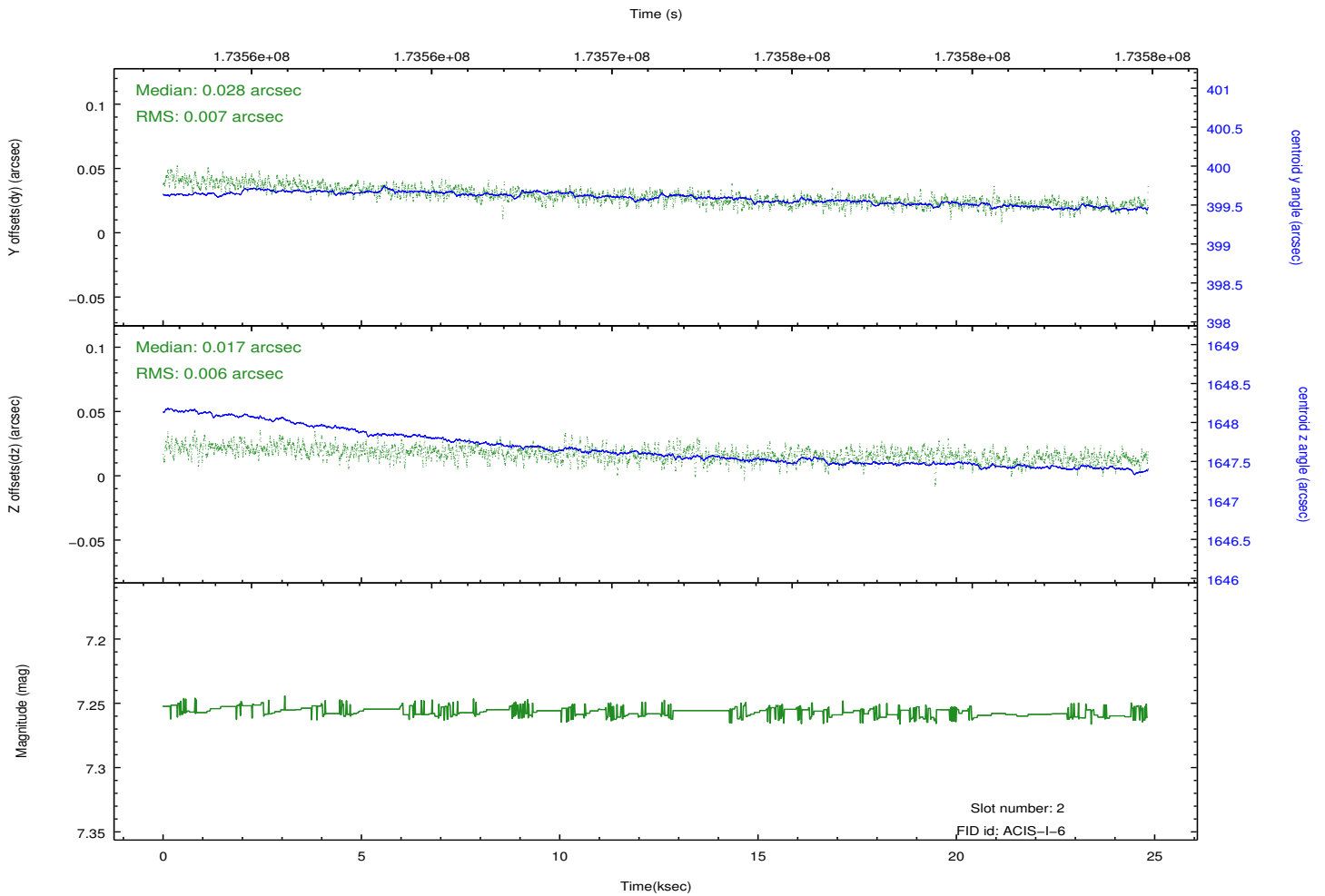
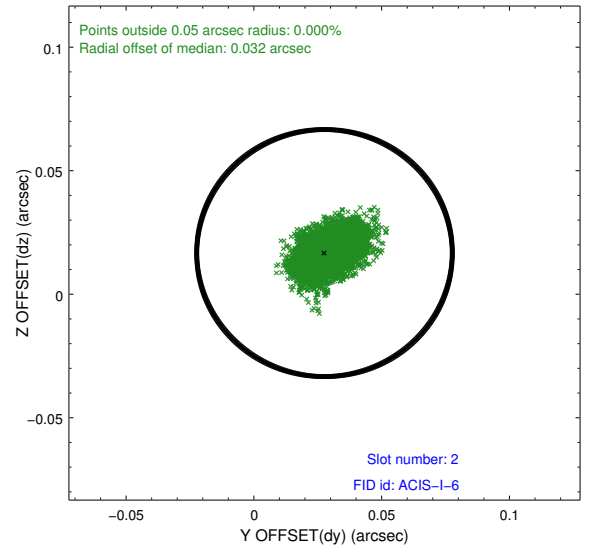
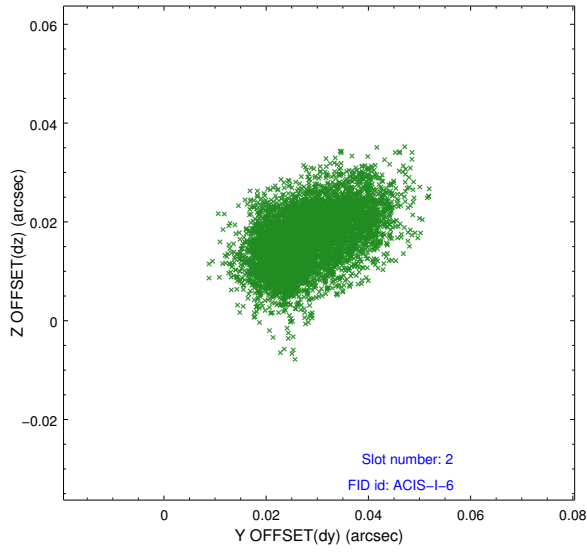
### 2.5.1 Slot 0



## 2.5.2 Slot 1



### 2.5.3 Slot 2



# A Summary

## A.1 Status

V&V Scientist	Beth Sundheim
V&V Date (YYYY-MM-DD)	2012.11.15
V&V Edition	1
V&V Disposition and Status	OK
V&V Charge Time	24.359

## A.2 Comments