

V&V Reference Report

L2 ASCDS Version : 8.5

Observation 4676 - L2 Version 3
Chandra X-Ray Center

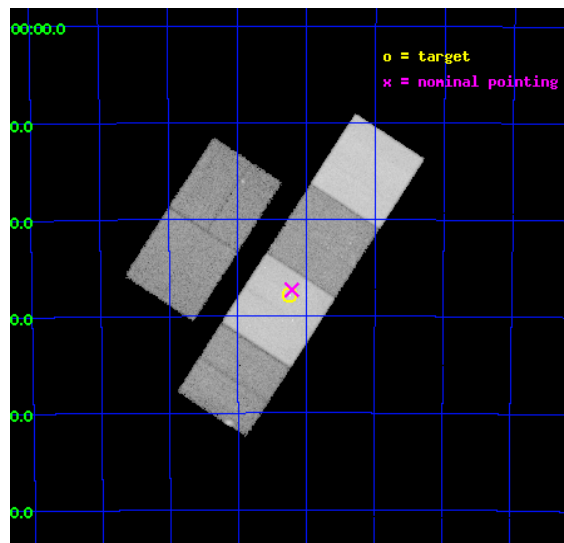
L2 Processing Date : Dec 11 2012

Contents

1	Front	2
2	OBI	3
2.1	OBI	3
2.1.1	Images	3
2.1.2	Bias	3
2.1.3	Parameters	4
2.1.4	Events	4
2.2	Compared Parameters	5
2.3	Aspect	6
2.4	Star Slots	9
2.4.1	Slot 3	9
2.4.2	Slot 4	10
2.4.3	Slot 5	11
2.4.4	Slot 6	12
2.4.5	Slot 7	13
2.5	FID Slots	14
2.5.1	Slot 0	14
2.5.2	Slot 1	15
2.5.3	Slot 2	16
A	Summary	17
A.1	Status	17
A.2	Comments	17

1 Front

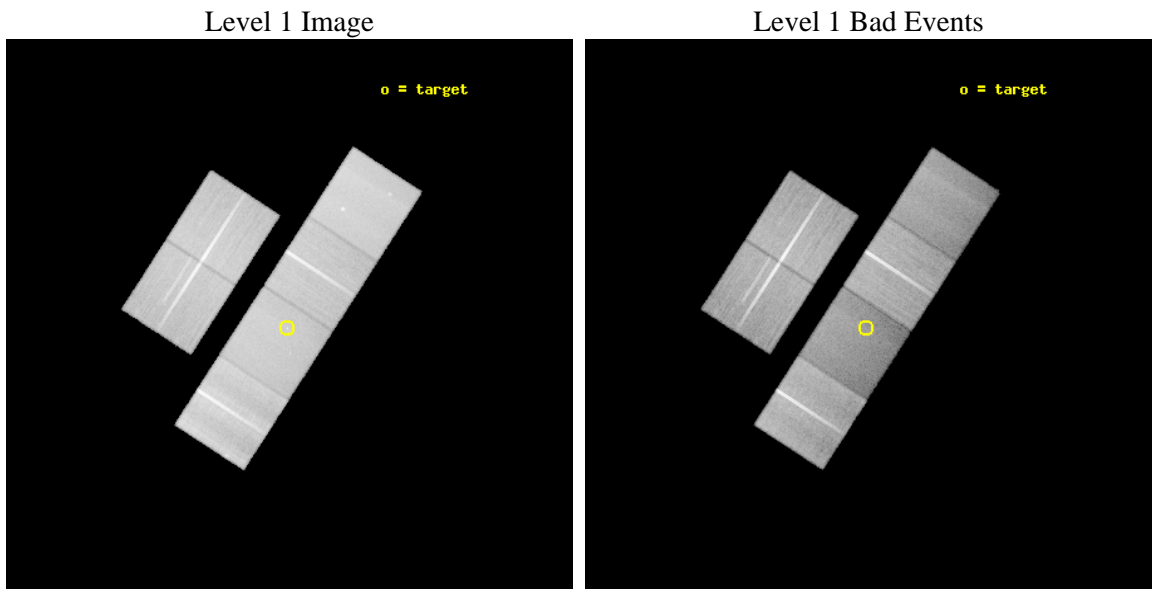
seq_num	500495	Sequence number
obs_id	4676	Observation id
title	Probing the X-ray emission from the high-magnetic field radio pulsar PSR J1119-6127 associated with SNR G292.2-0.5	Proposal title
observer	Prof. Samar Safi-Harb	Principal investigator
object	PSR J1119-6127	Source name
dtcycle	0	
cycle	P	events from which exps? Prim/Second/Both
ra_targ	169.81	Observer's specified target RA [deg]
dec_targ	-61.463806	Observer's specified target Dec [deg]
ra_nom	169.80213894624	Nominal RA [deg]
dec_nom	-61.454882888714	Nominal Dec [deg]
roll_nom	122.94972034296	Nominal Roll [deg]
revision	3	Processing version of data
ontime	61315.199771583	Sum of GTIs [s]
livetime	60538.789792494	Livetime [s]
ontime2	61305.476860821	Sum of GTIs [s]
ontime3	61308.717850983	Sum of GTIs [s]
ontime5	61315.199771583	Sum of GTIs [s]
ontime6	61315.199771583	Sum of GTIs [s]
ontime7	61315.199771583	Sum of GTIs [s]
ontime8	61315.199771583	Sum of GTIs [s]
l2events	615269	Number of level 2 events



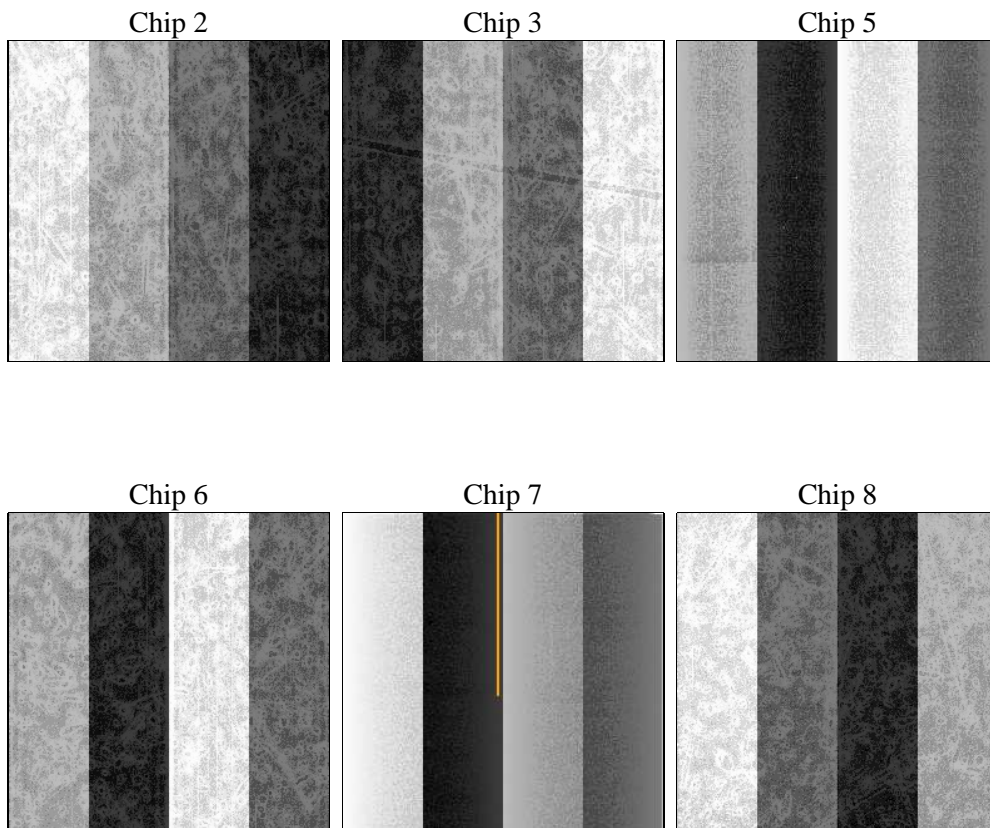
2 OBI

2.1 OBI

2.1.1 Images



2.1.2 Bias



2.1.3 Parameters

obi_num	1	Obi number	sched_exp_time	61183.728000	[s] Scheduled observation exposure time
ascdsver	8.5	Processing system revision	ontime	61315.199771583	Sum of GTIs [s]
caldbver	4.5.4	 	ontime2	61305.476860821	Sum of GTIs [s]
date	2012-12-11T02:08:55	Date and time of file creation	ontime3	61308.717850983	Sum of GTIs [s]
revision	3	Processing version of data	ontime5	61315.199771583	Sum of GTIs [s]
			ontime6	61315.199771583	Sum of GTIs [s]
			ontime7	61315.199771583	Sum of GTIs [s]
			ontime8	61315.199771583	Sum of GTIs [s]
			l1events	2586851	Number of level 1 events

2.1.4 Events

	ccd 2	ccd 3	ccd 5	ccd 6	ccd 7	ccd 8		ccd 2	ccd 3	ccd 5	ccd 6	ccd 7	ccd 8
level 1 events	429598	389376	478688	408058	396691	484440	grade 0 events	18332	17371	22393	26725	21642	35103
rejected events	385686	348115	225661	352857	189178	361901		4%	4%	4%	6%	5%	7%
rejected %	89%	89%	47%	86%	47%	74%	grade 1 events	263	231	404	230	366	373
								0%	0%	0%	0%	0%	0%
							grade 2 events	10078	8317	74014	10330	41109	27623
								2%	2%	15%	2%	10%	5%
							grade 3 events	4335	4452	12341	5016	19386	15037
								1%	1%	2%	1%	4%	3%
							grade 4 events	4410	4350	11800	4947	19247	13640
								1%	1%	2%	1%	4%	2%
							grade 5 events	11220	12731	40369	13192	40209	19717
								2%	3%	8%	3%	10%	4%
							grade 6 events	7140	7139	134624	8622	107798	32288
								1%	1%	28%	2%	27%	6%
							grade 7 events	373820	334785	182743	338996	146934	340659
								87%	85%	38%	83%	37%	70%

2.2 Compared Parameters

Parameter	Planned	Actual	Parameter	Planned	Actual
Instrument	ACIS	ACIS	Obspar format version number	7	7
Detector	ACIS-235678	ACIS-235678	Obspar file type	PREDICTED	ACTUAL
Grating	NONE	NONE	Obspar update status	NONE	UPDATED
Data mode	VFAINT	VFAINT	Number of optional ACIS chips dropped	0	0
Observation mode	POINTING	POINTING	On-chip summing requested	N	N
[deg] Pointing RA	169.853254	169.8021389462362	Subarray requested	NONE	NONE
[deg] Pointing Dec	-61.466930	-61.45488288871435	Alternating exposures requested	N	N
[deg] Pointing Roll	122.837997	122.9497203429556	[s] Primary exposure time	0.000000	3.2
[deg] Roll angle	140.000000	140.000000			
[deg] Roll tolerance	20.000000	20.000000			
Roll constraint allows 180D rotation	N	N			
[mm] SIM focus pos	-0.684267	-0.6828225247311905			
[mm] SIM defocus	0	0.001444936568705701			
[mm] SIM translation stage pos	-190.132523	-190.1425803651734			
[mm] SIM translation stage offset	0	0.01005778216563158			
[s] Observation start time (MET)	215600351.184000	215599022.86014			
Observation start date	2004-10-31T08:58:07	2004-10-31T08:37:02			
[s] Observation end time (MET)	215661534.184000	215661759.01295			
Observation end date	2004-11-01T01:57:50	2004-11-01T02:02:39			
Read mode	TIMED	TIMED			

2.3 Aspect

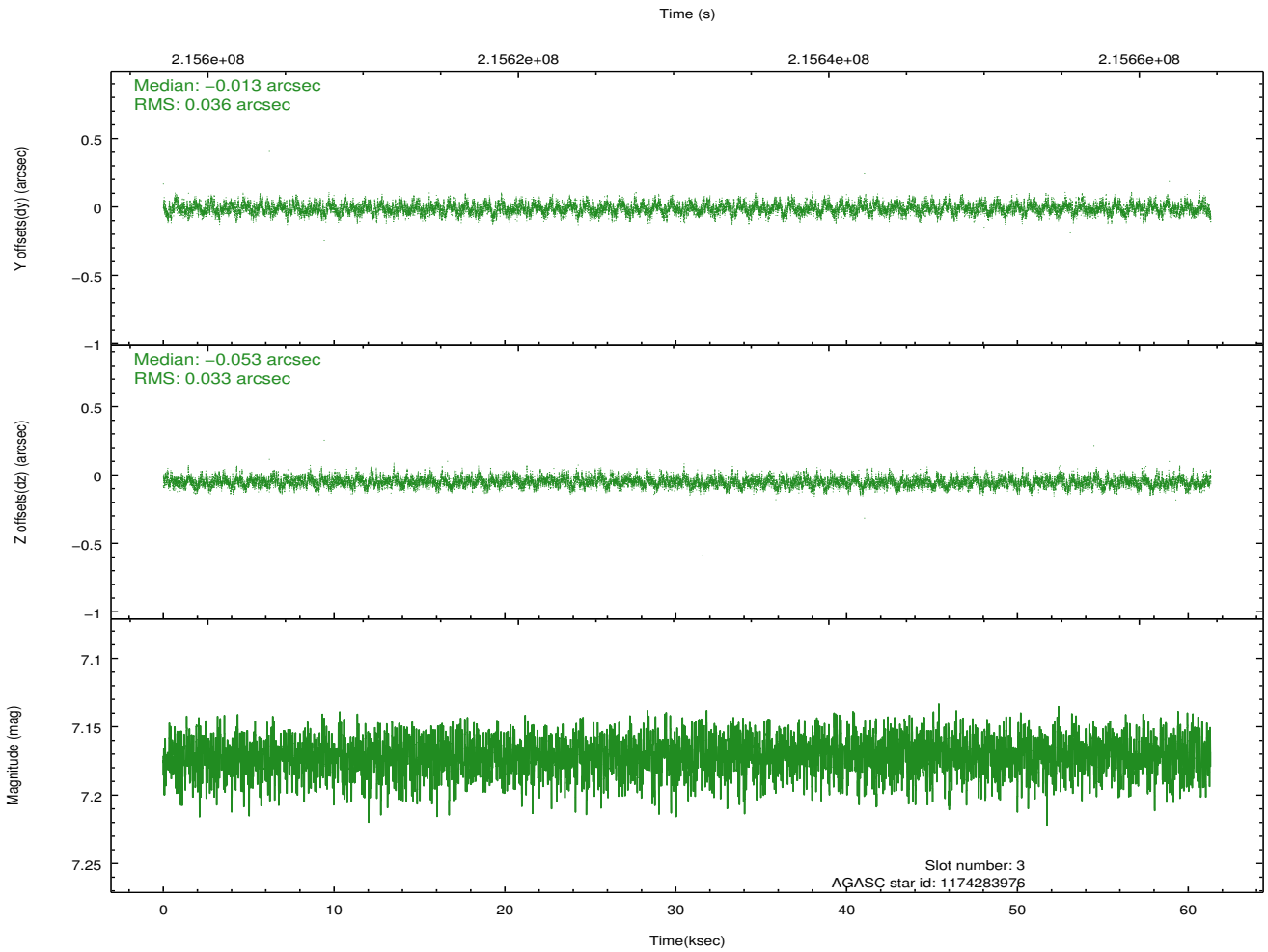
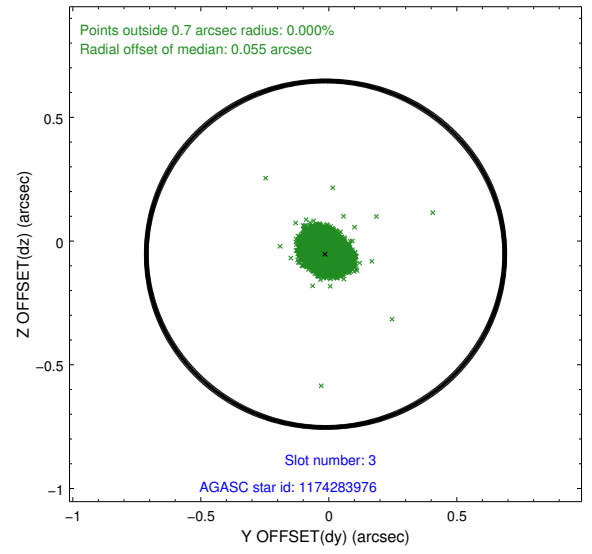
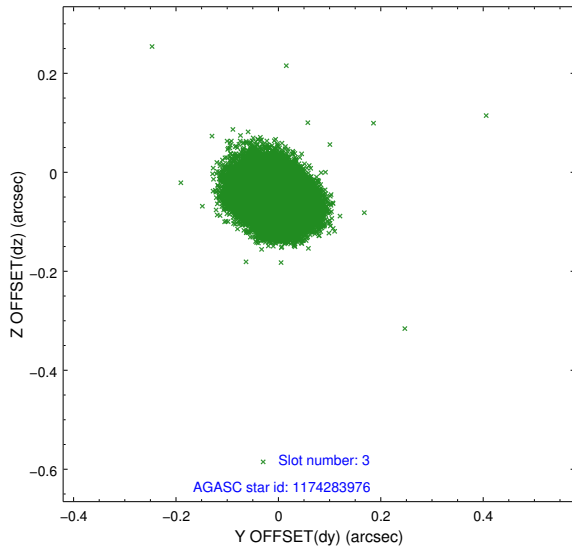
Slot Statistics

slot	status	id	mag	n_pts	med_dy	med_dz	dr1	dr2	ra	dec	mean_y	mean_z
0	FID	ACIS-S-2	7.10	14956	-0.048	-0.028	0.012	0.018	0.000000	0.000000	-759.54	-1732.76
1	FID	ACIS-S-4	7.20	14956	0.081	0.031	0.012	0.027	0.000000	0.000000	2153.87	175.84
2	FID	ACIS-S-5	7.23	14955	-0.064	0.005	0.013	0.023	0.000000	0.000000	-1812.47	169.41
3	GUIDE	1174283976	7.17	29911	-0.013	-0.053	0.052	0.083	170.390254	-61.226219	221.14	-1249.29
4	GUIDE	1174289064	7.59	29912	-0.049	0.014	0.059	0.096	169.403245	-61.635432	-94.44	977.14
5	GUIDE	1174290744	8.19	29903	0.010	0.048	0.062	0.098	171.197974	-61.558775	-1547.41	-1744.84
6	GUIDE	1174294448	8.41	29900	0.012	0.026	0.061	0.101	169.819774	-60.897022	1756.02	-1062.96
7	GUIDE	1174808080	8.72	29826	0.041	-0.035	0.063	0.102	169.528961	-61.918631	-1069.22	1344.22

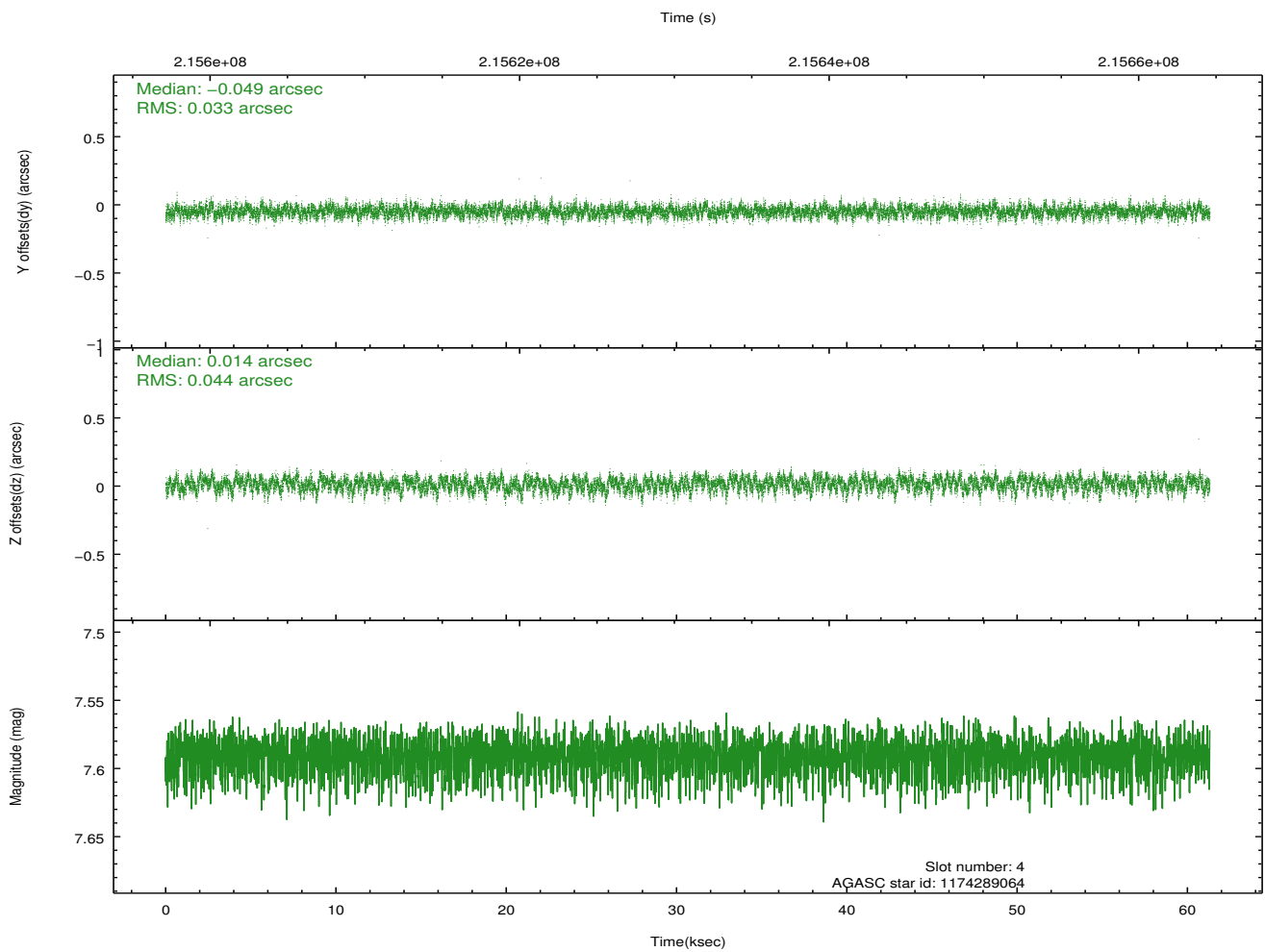
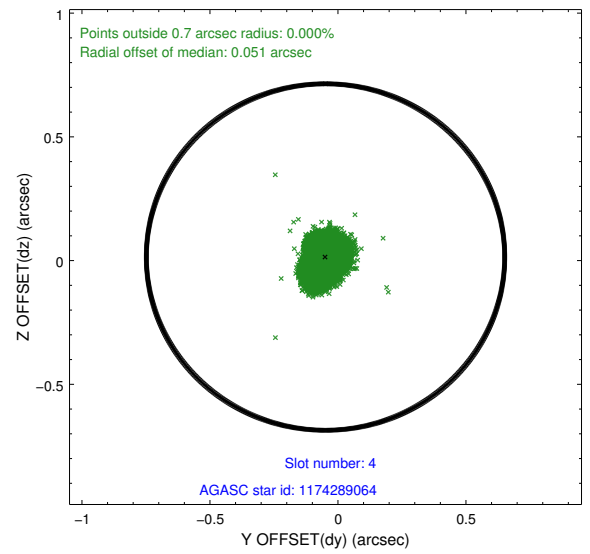
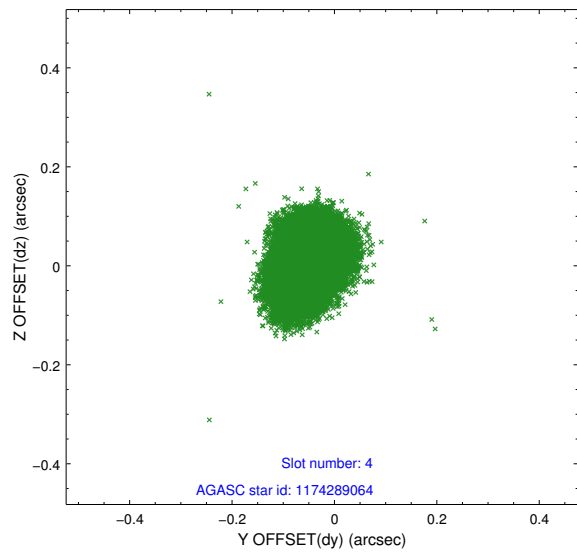
∞

2.4 Star Slots

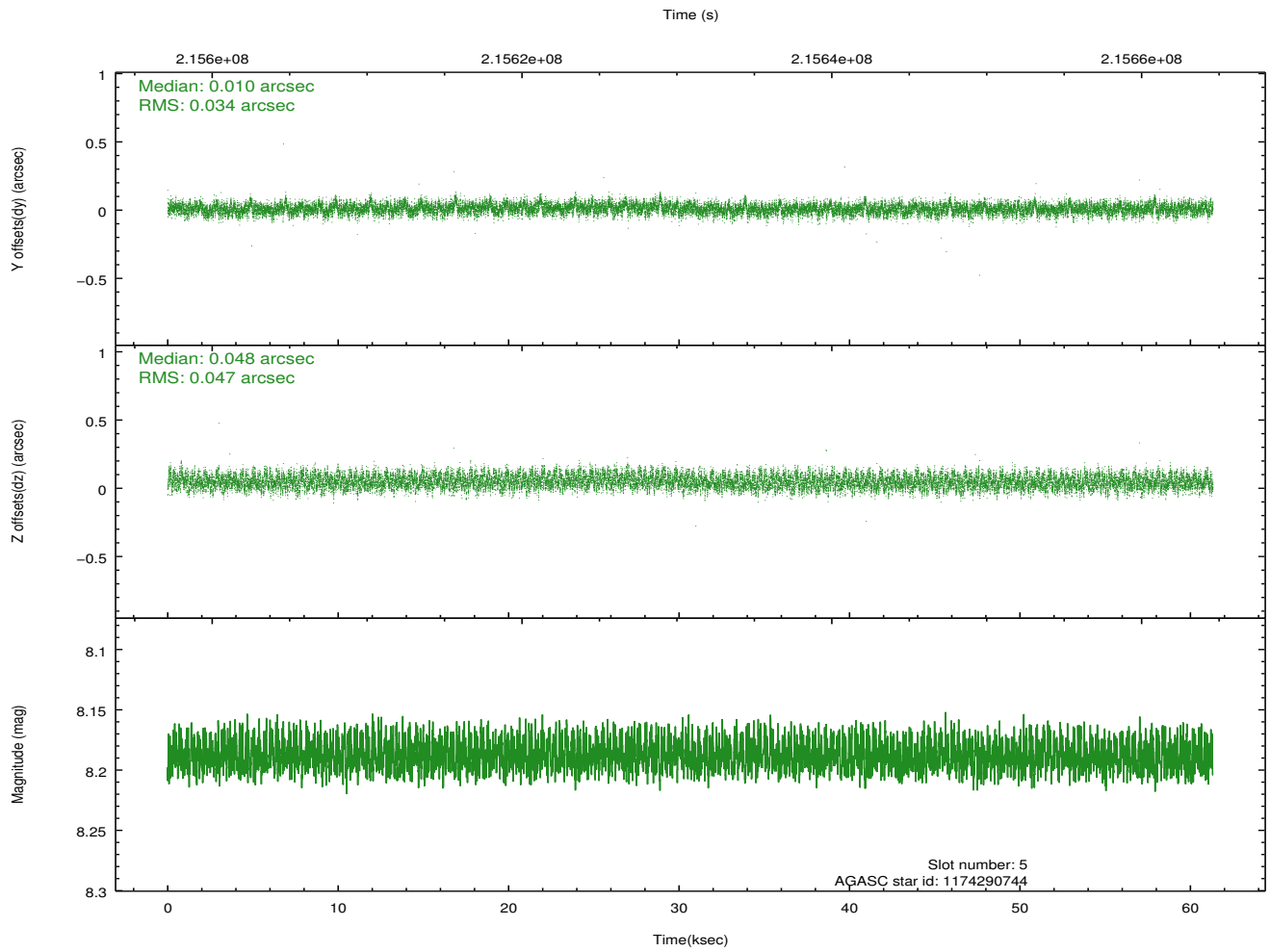
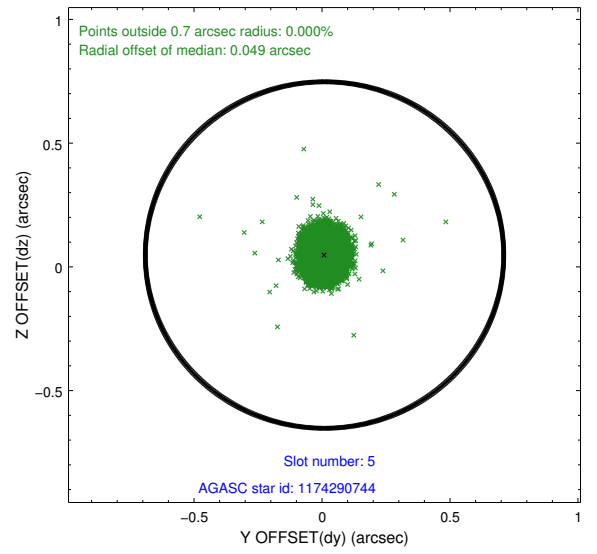
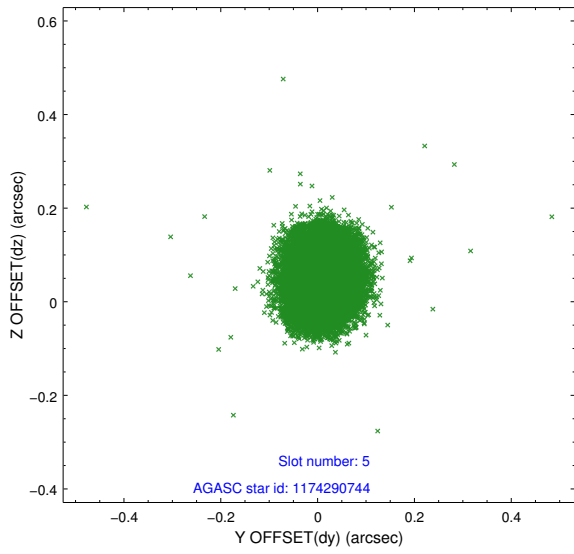
2.4.1 Slot 3



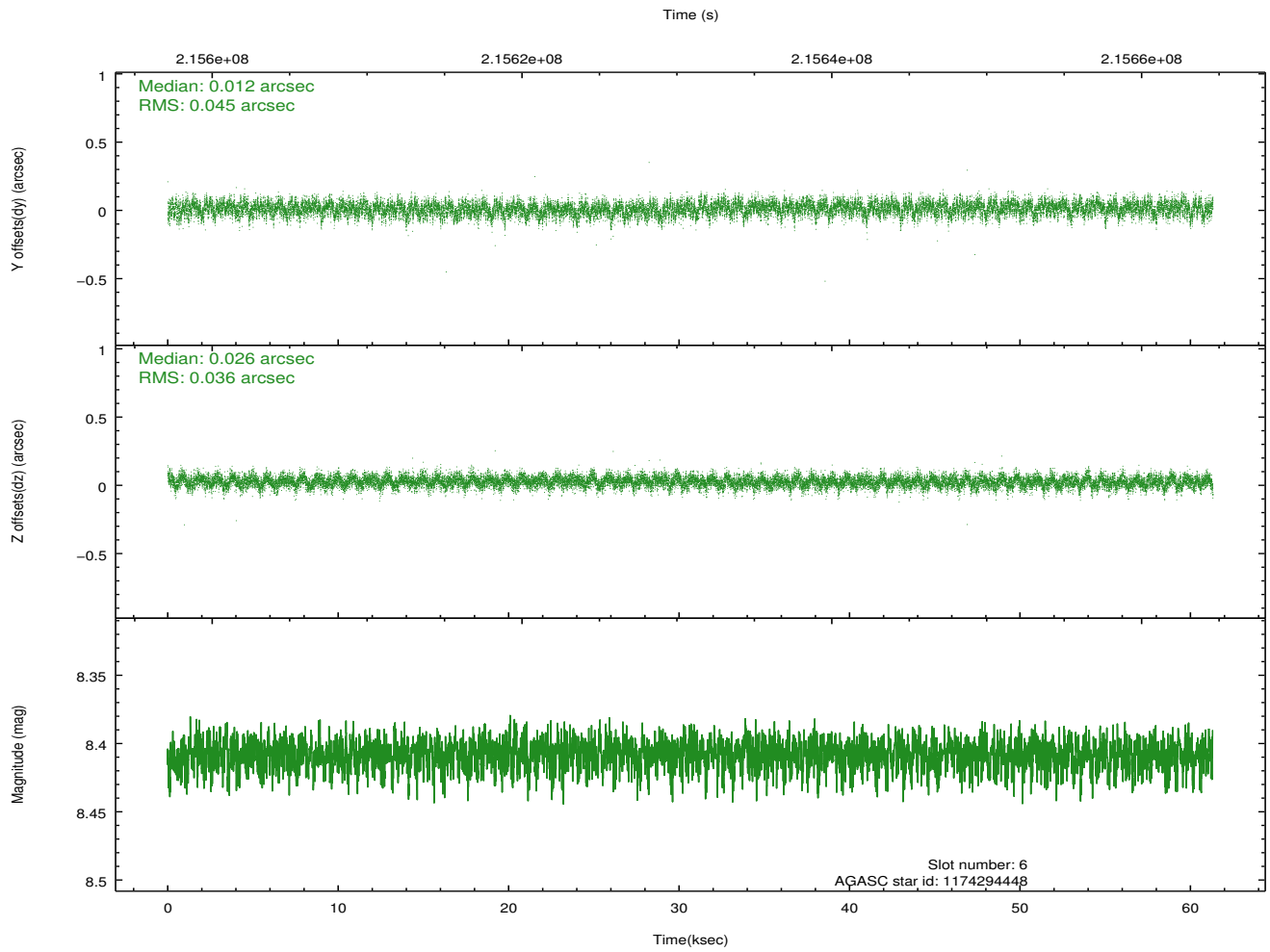
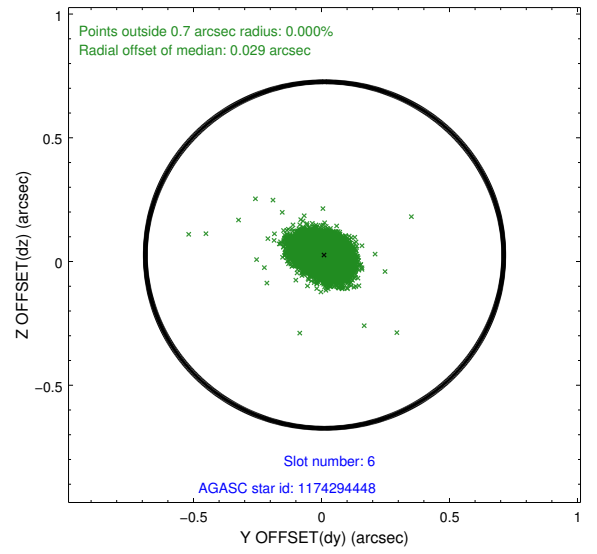
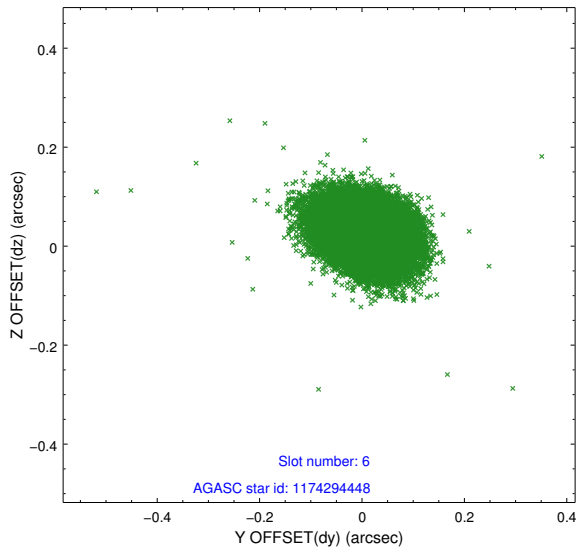
2.4.2 Slot 4



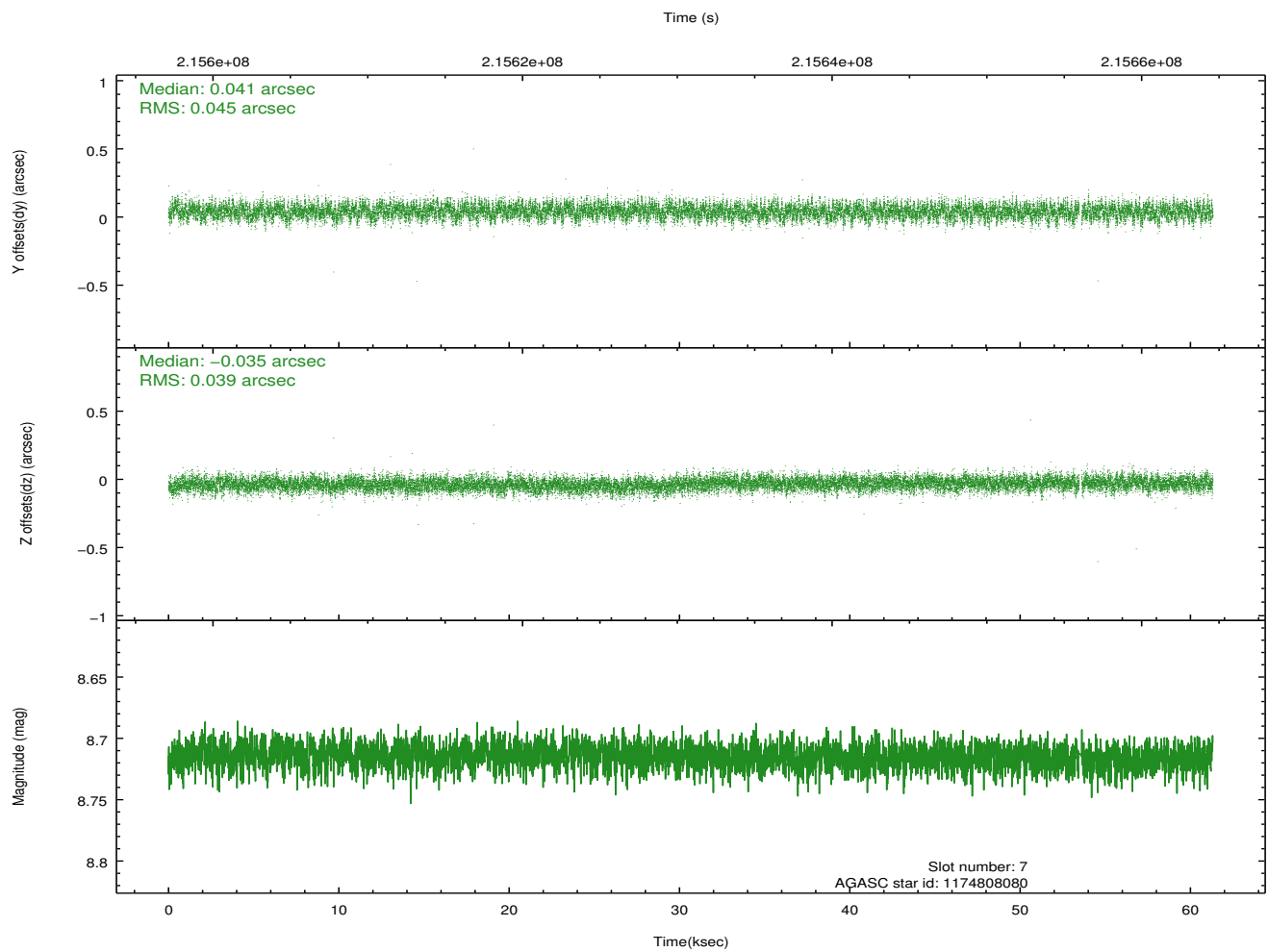
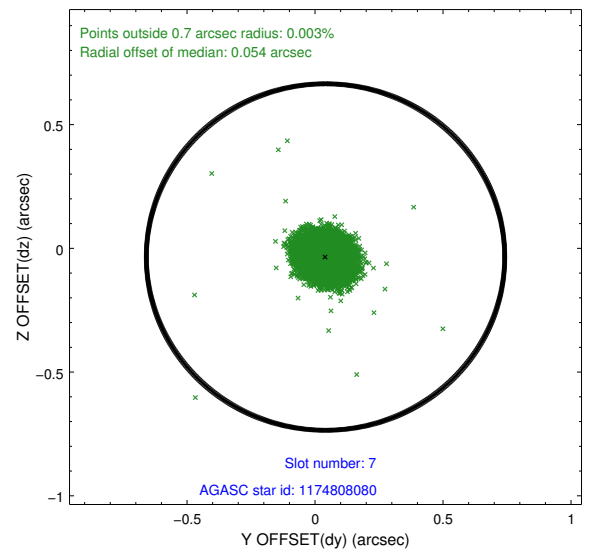
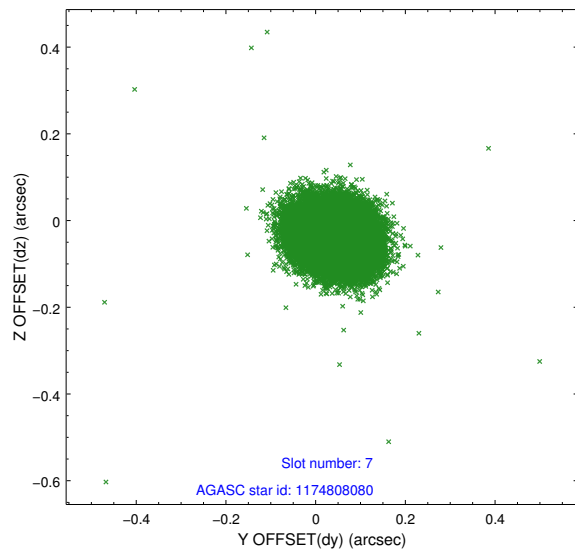
2.4.3 Slot 5



2.4.4 Slot 6

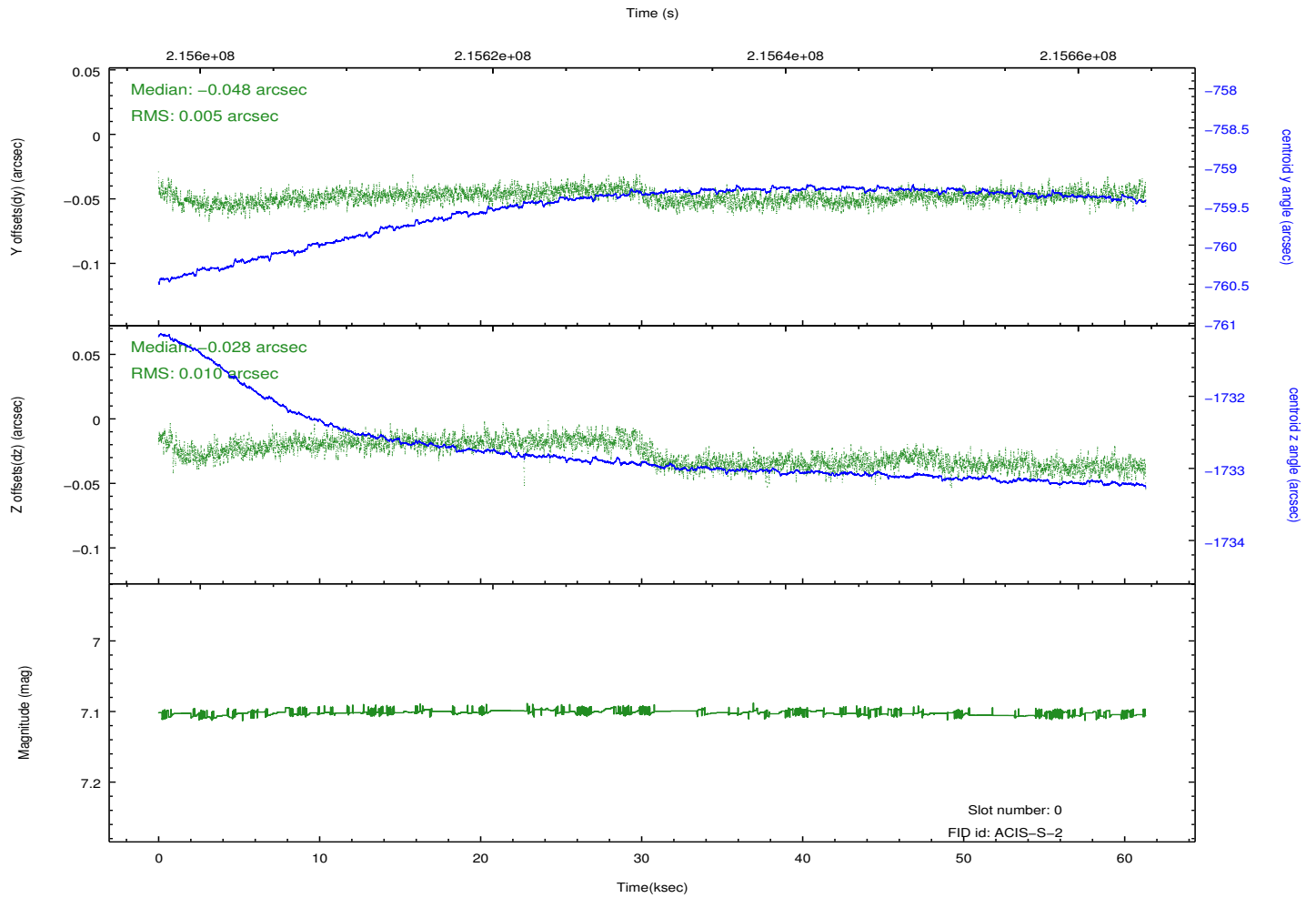
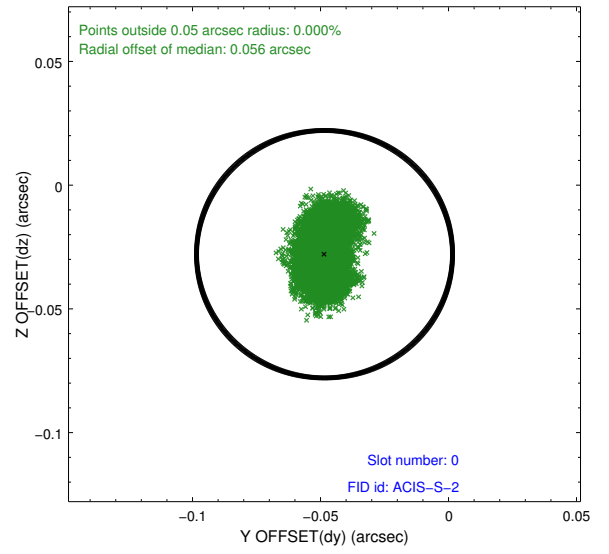
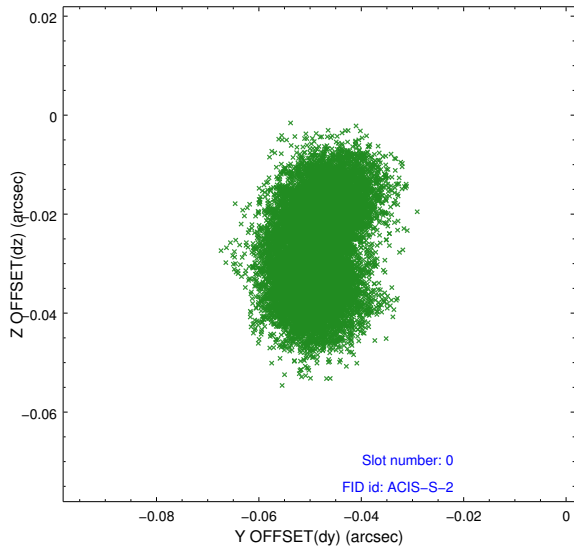


2.4.5 Slot 7

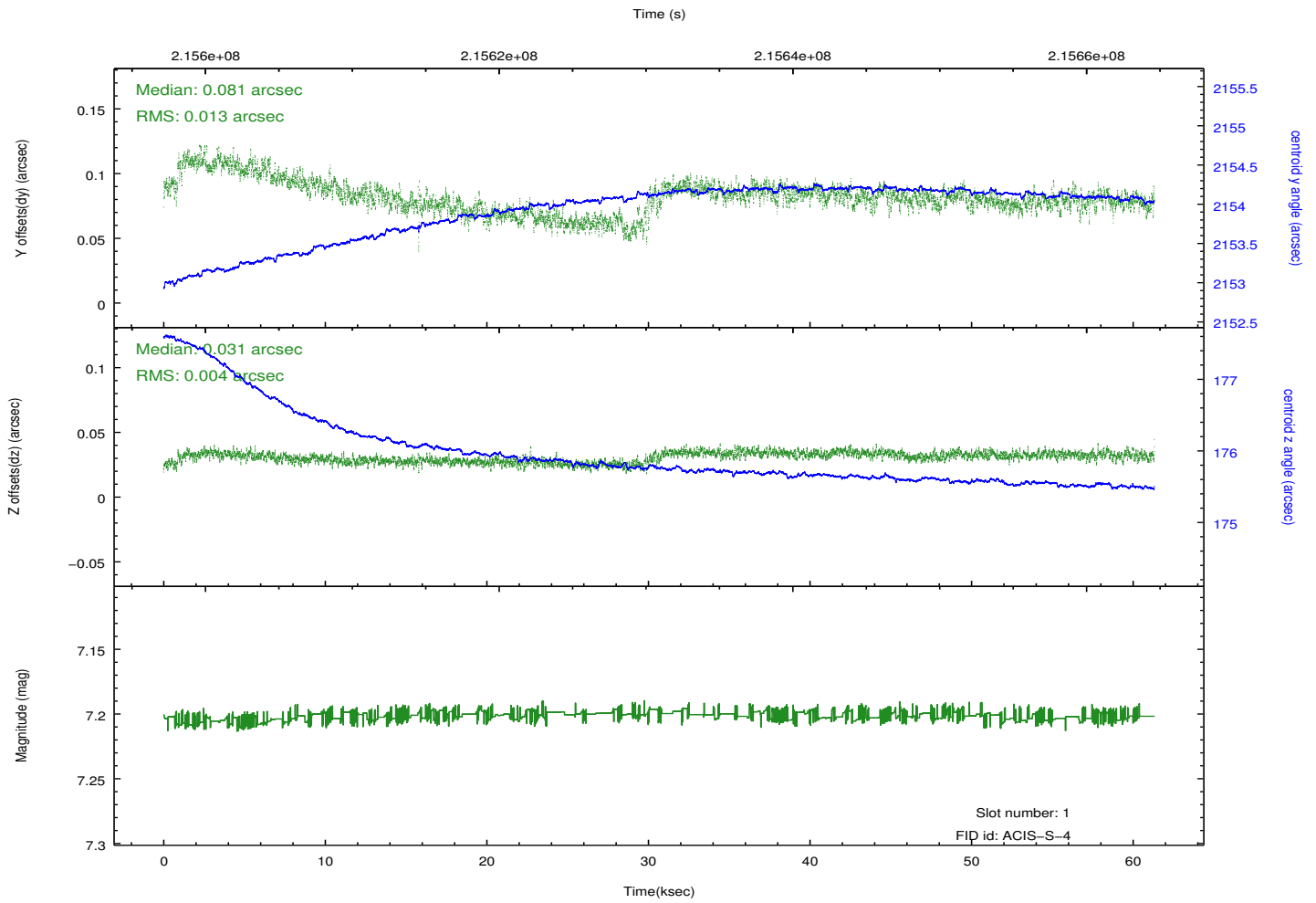
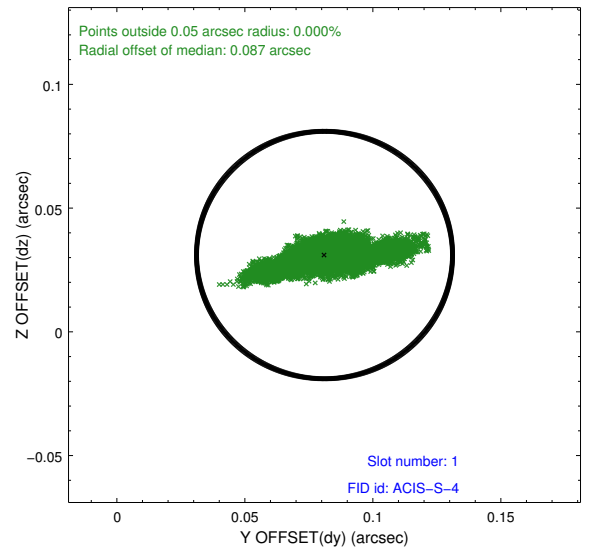
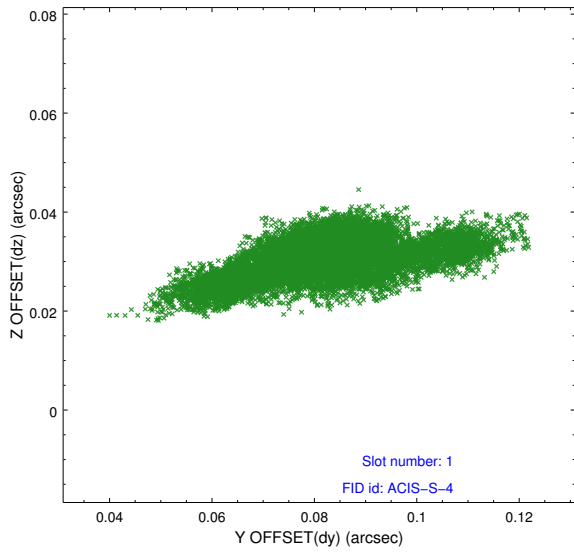


2.5 FID Slots

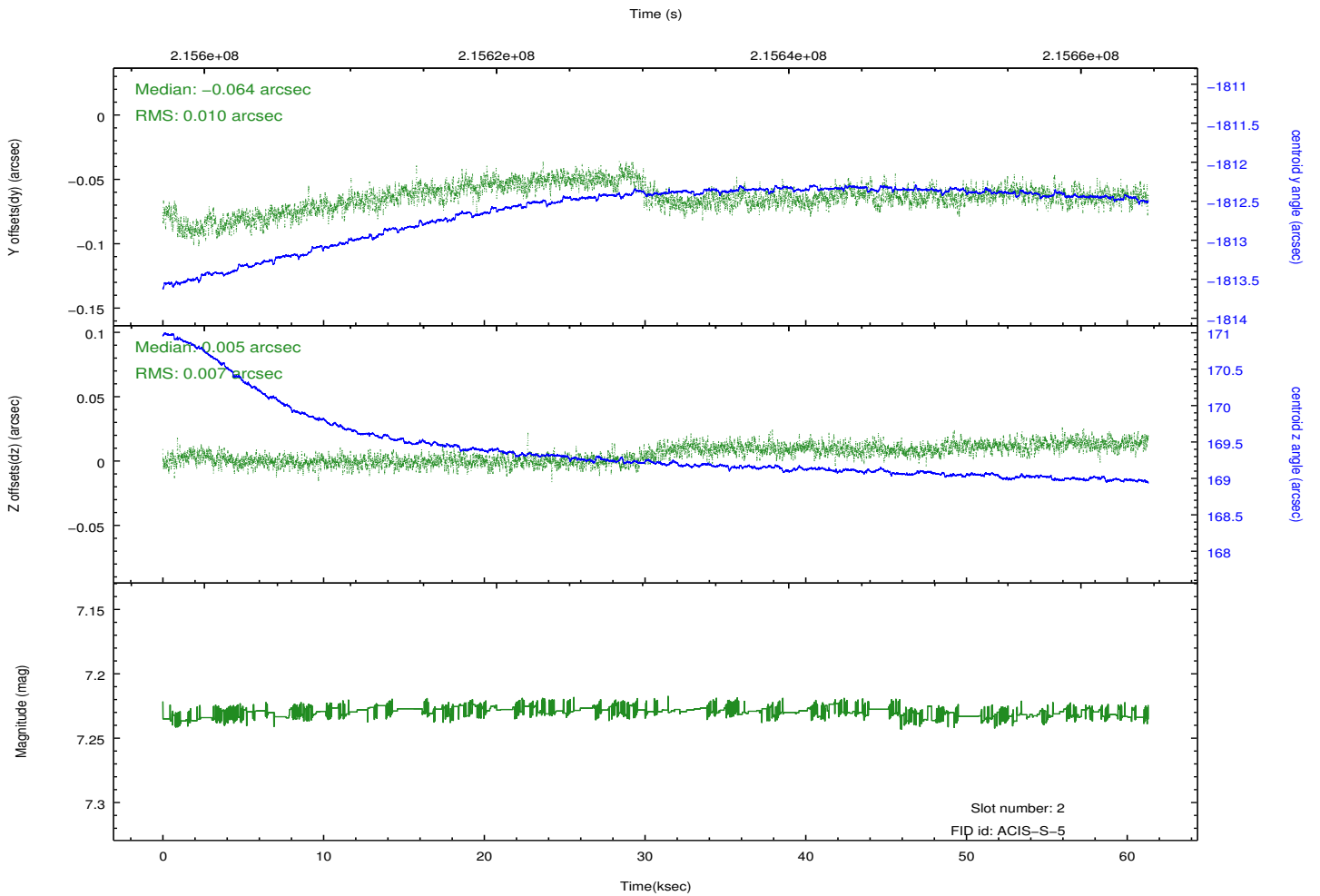
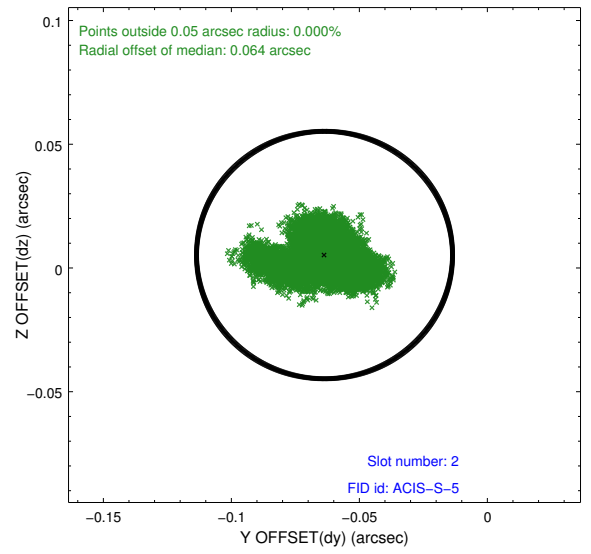
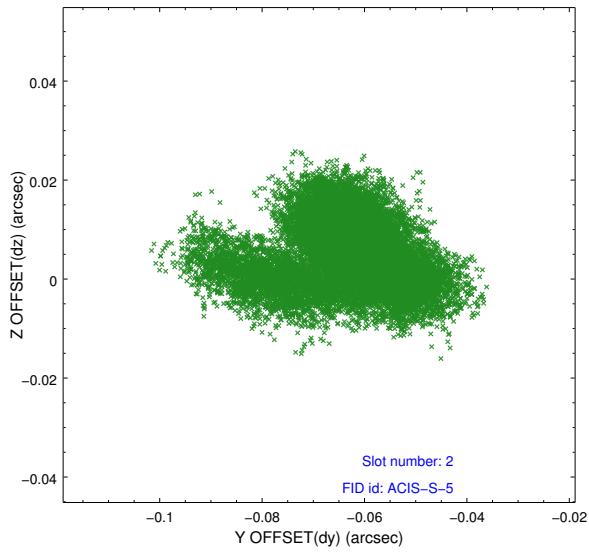
2.5.1 Slot 0



2.5.2 Slot 1



2.5.3 Slot 2



A Summary

A.1 Status

V&V Scientist	Jen Lauer
V&V Date (YYYY-MM-DD)	2013.01.03
V&V Edition	1
V&V Disposition and Status	OK
V&V Charge Time	61.315

A.2 Comments

Roll constraint satisfied.