

# V&V Reference Report

## L2 ASCDS Version : 8.4.5

Observation 4966 - L2 Version 3  
Chandra X-Ray Center

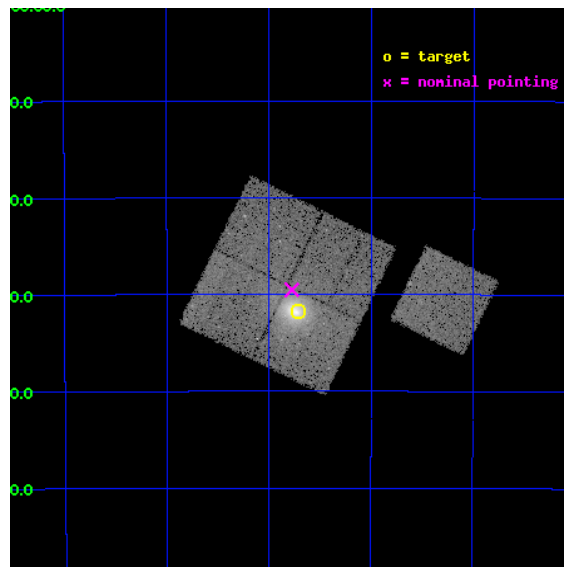
L2 Processing Date : Dec 1 2012

## Contents

<b>1</b>	<b>Front</b>	<b>2</b>
<b>2</b>	<b>OBI</b>	<b>3</b>
2.1	OBI . . . . .	3
2.1.1	Images . . . . .	3
2.1.2	Bias . . . . .	3
2.1.3	Parameters . . . . .	4
2.1.4	Events . . . . .	4
2.2	Compared Parameters . . . . .	5
2.3	Aspect . . . . .	6
2.4	Star Slots . . . . .	9
2.4.1	Slot 3 . . . . .	9
2.4.2	Slot 4 . . . . .	10
2.4.3	Slot 5 . . . . .	11
2.4.4	Slot 6 . . . . .	12
2.4.5	Slot 7 . . . . .	13
2.5	FID Slots . . . . .	14
2.5.1	Slot 0 . . . . .	14
2.5.2	Slot 1 . . . . .	15
2.5.3	Slot 2 . . . . .	16
<b>A</b>	<b>Summary</b>	<b>17</b>
A.1	Status . . . . .	17
A.2	Comments . . . . .	17

# 1 Front

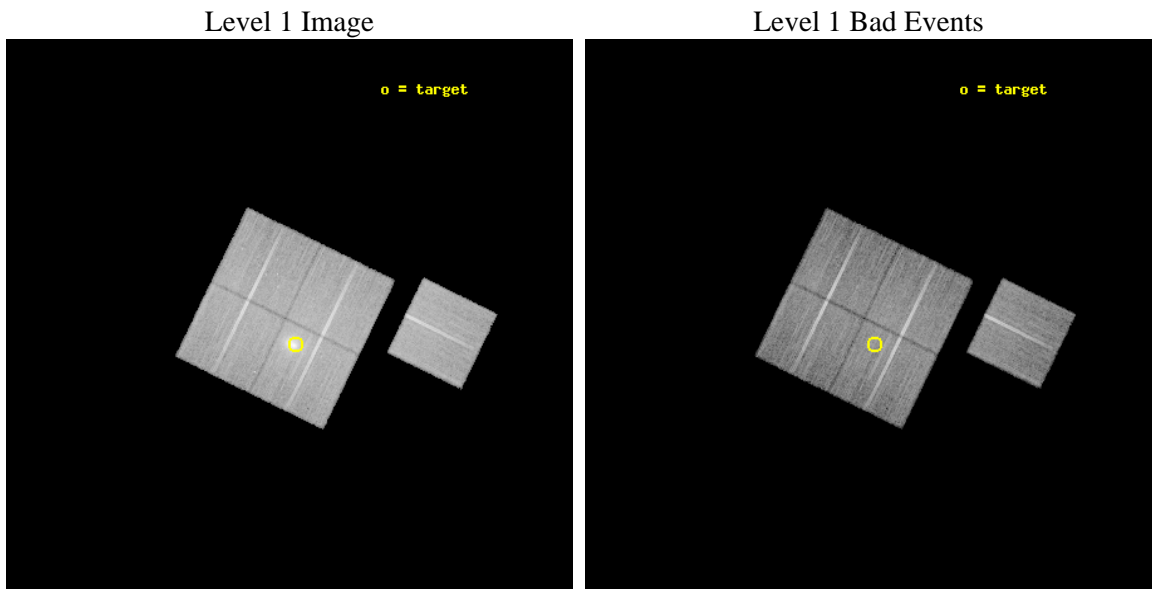
seq_num	800412	Sequence number
obs_id	4966	Observation id
title	A Joint Chandra and Sunyaev-Zel'dovich Study of Abell S1063	Propo
observer	Dr A. Kathy Romer	Principal investigator
object	Abell S1063	Source name
dtcycle	0	&#160
cycle	P	events from which exps? Prim/Second/Both
ra_targ	342.179167	Observer's specified target RA [deg]
dec_targ	-44.528056	Observer's specified target Dec [deg]
ra_nom	342.19403244178	Nominal RA [deg]
dec_nom	-44.492016679958	Nominal Dec [deg]
roll_nom	116.13331198789	Nominal Roll [deg]
revision	3	Processing version of data
ontime	27072.299947917	Sum of GTIs [s]
livetime	26718.580418761	Livetime [s]
ontime0	27072.299947917	Sum of GTIs [s]
ontime1	27066.017987549	Sum of GTIs [s]
ontime2	27069.158977658	Sum of GTIs [s]
ontime3	27072.299947917	Sum of GTIs [s]
ontime6	27072.299947917	Sum of GTIs [s]
l2events	105180	Number of level 2 events



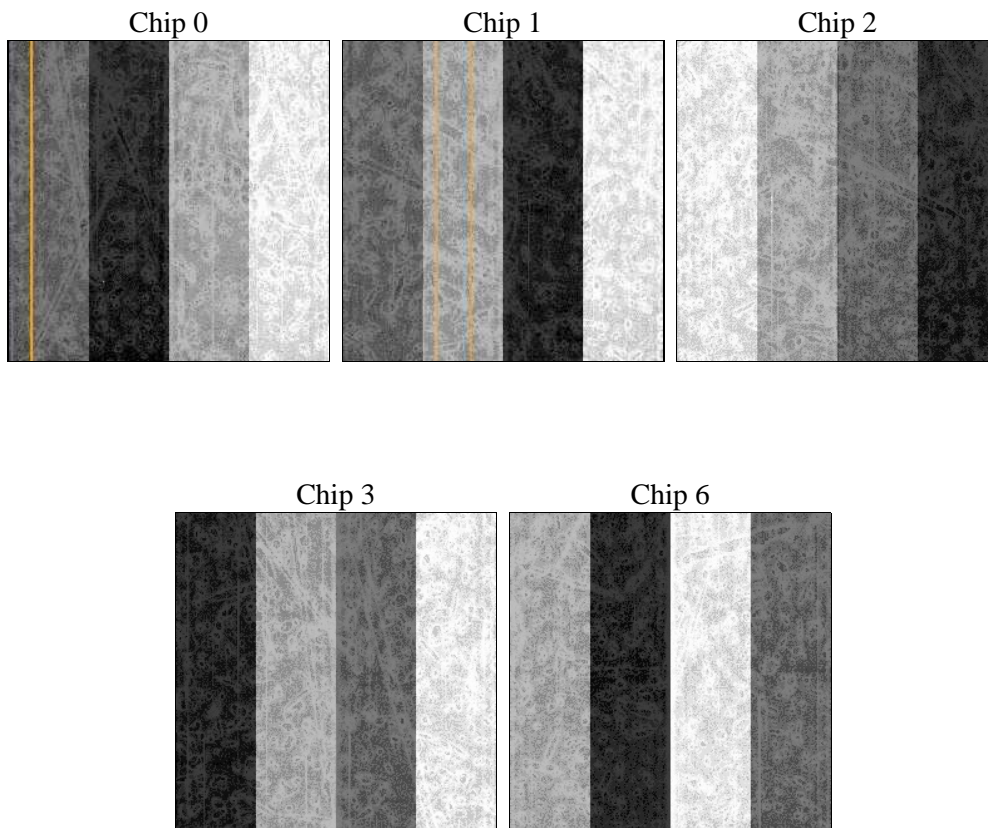
## 2 OBI

### 2.1 OBI

#### 2.1.1 Images



#### 2.1.2 Bias



### 2.1.3 Parameters

obi_num	0	Obi number	sched_exp_time	26962.000000	[s] Scheduled observation exposure time
ascdsver	8.4.5	Processing system revision	ontime	27072.299947917	Sum of GTIs [s]
caldbver	4.5.2	&#160	ontime0	27072.299947917	Sum of GTIs [s]
date	2012-12-01T08:43:31	Date and time of file creation	ontime1	27066.017987549	Sum of GTIs [s]
revision	3	Processing version of data	ontime2	27069.158977658	Sum of GTIs [s]
			ontime3	27072.299947917	Sum of GTIs [s]
			ontime6	27072.299947917	Sum of GTIs [s]
			l1events	870928	Number of level 1 events

### 2.1.4 Events

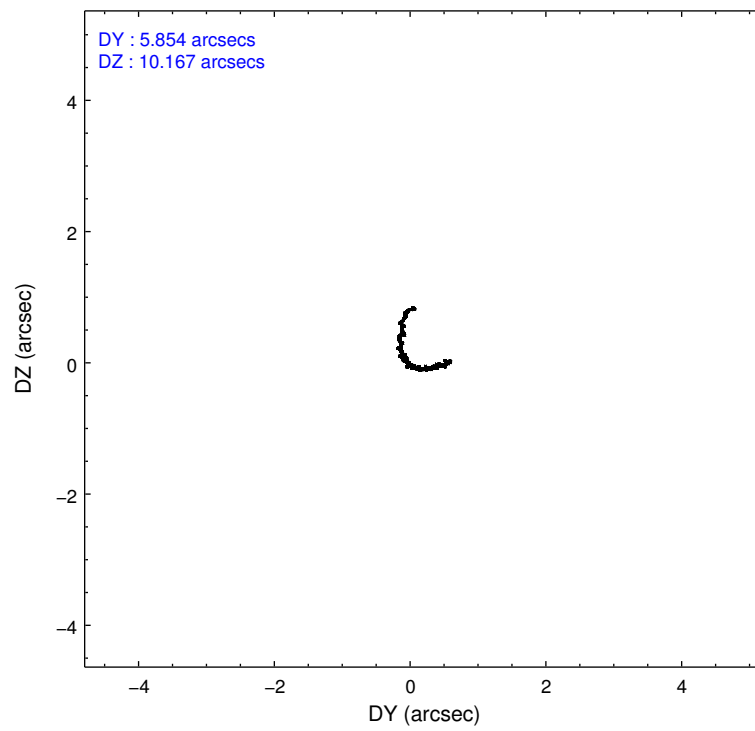
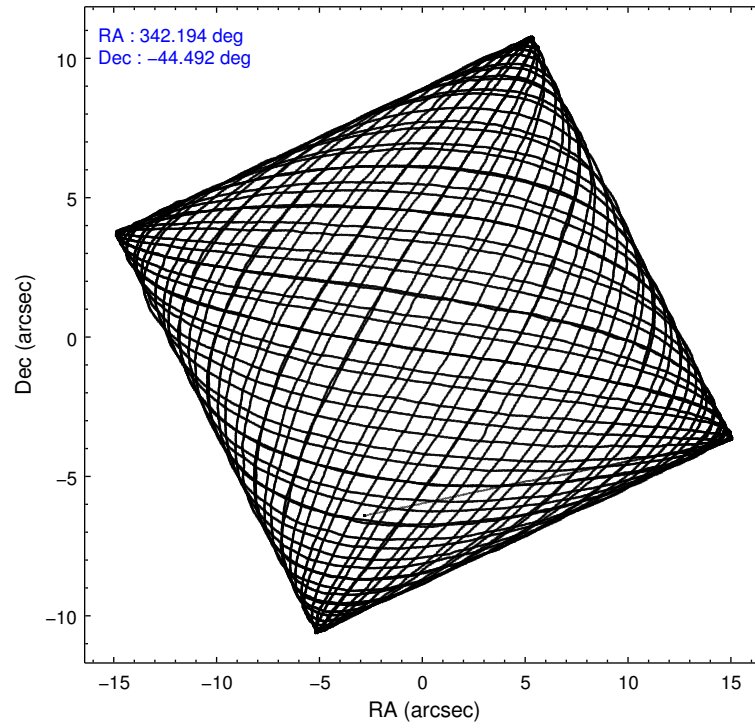
	ccd 0	ccd 1	ccd 2	ccd 3	ccd 6
level 1 events	154515	163998	178987	204055	169373
rejected events	137386	143605	162277	154334	152854
rejected %	88%	87%	90%	75%	90%

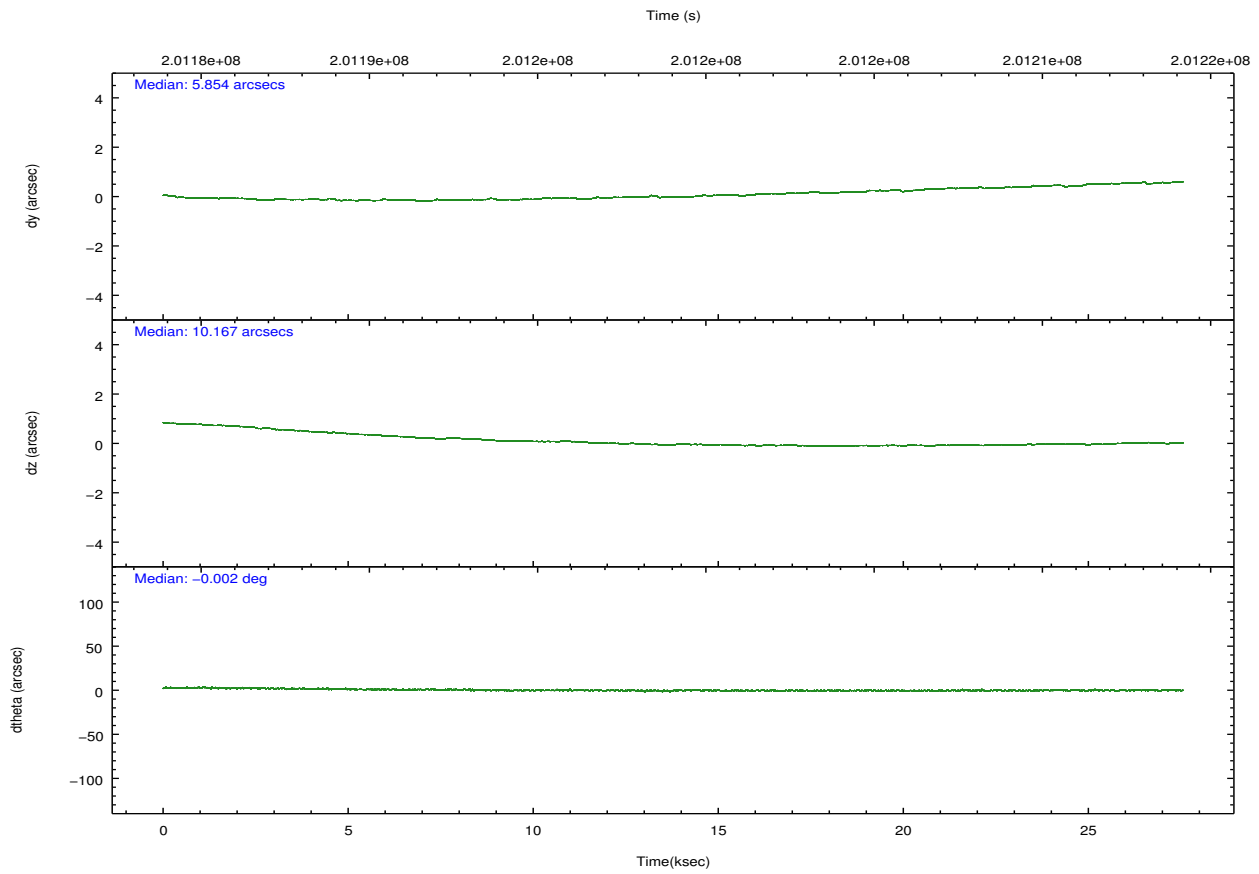
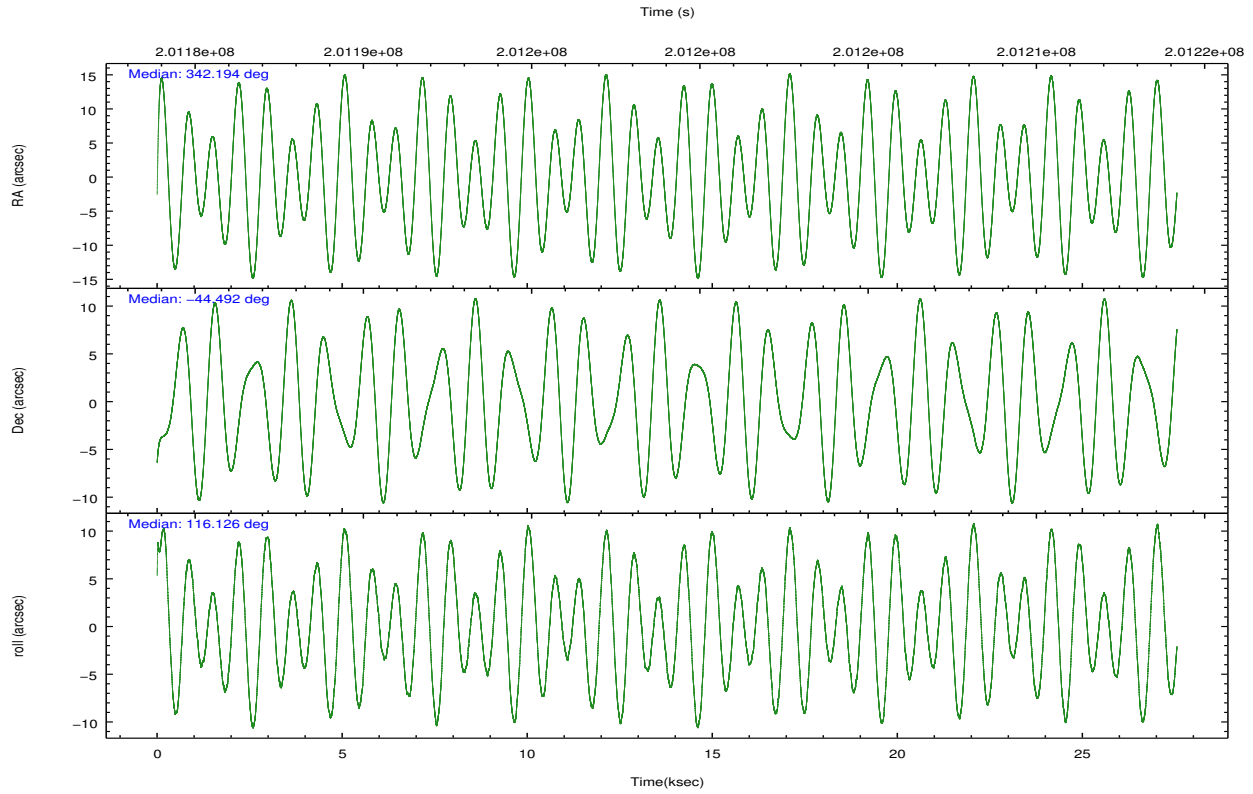
	ccd 0	ccd 1	ccd 2	ccd 3	ccd 6
grade 0 events	6303	8230	6216	33328	5572
	4%	5%	3%	16%	3%
grade 1 events	88	90	81	227	74
	0%	0%	0%	0%	0%
grade 2 events	3995	4242	3803	6731	3591
	2%	2%	2%	3%	2%
grade 3 events	1968	2148	1931	2931	1879
	1%	1%	1%	1%	1%
grade 4 events	1780	2064	1787	2842	1910
	1%	1%	0%	1%	1%
grade 5 events	5881	6208	5649	6908	6554
	3%	3%	3%	3%	3%
grade 6 events	3085	3720	2976	3900	3568
	1%	2%	1%	1%	2%
grade 7 events	131415	137296	156544	147188	146225
	85%	83%	87%	72%	86%

## 2.2 Compared Parameters

Parameter	Planned	Actual	Parameter	Planned	Actual
Instrument	ACIS	ACIS	Obspar format version number	7	7
Detector	ACIS-01236	ACIS-01236	Obspar file type	PREDICTED	ACTUAL
Grating	NONE	NONE	Obspar update status	NONE	UPDATED
Data mode	VFAINT	VFAINT	Number of optional ACIS chips dropped	0	0
Observation mode	POINTING	POINTING	On-chip summing requested	N	N
[deg] Pointing RA	342.226012	342.1940324417778	Subarray requested	NONE	NONE
[deg] Pointing Dec	-44.507176	-44.49201667995779	Alternating exposures requested	N	N
[deg] Pointing Roll	115.947035	116.1333119878943	[s] Primary exposure time	0.000000	3.1
[mm] SIM focus pos	-0.782348	-0.7809083437167272			
[mm] SIM defocus	0	0.001439871863259334			
[mm] SIM translation stage pos	-233.592463	-233.5874344608287			
[mm] SIM translation stage offset	0	-0.005018542100998502			
[s] Observation start time (MET)	201185841.184000	201184675.2815			
Observation start date	2004-05-17T12:56:17	2004-05-17T12:37:55			
[s] Observation end time (MET)	201212803.184000	201213524.93278			
Observation end date	2004-05-17T20:25:39	2004-05-17T20:38:44			
Read mode	TIMED	TIMED			

## 2.3 Aspect





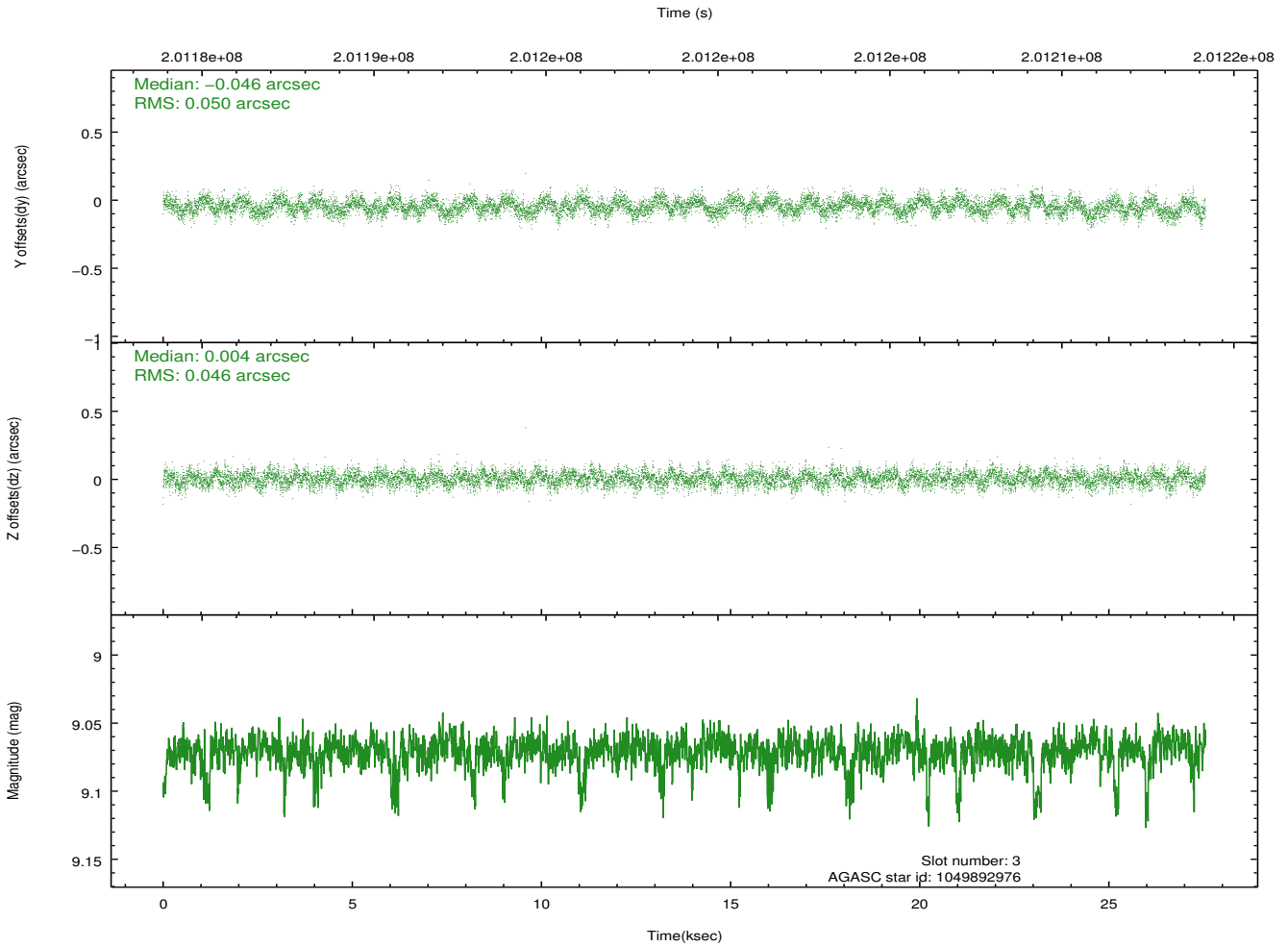
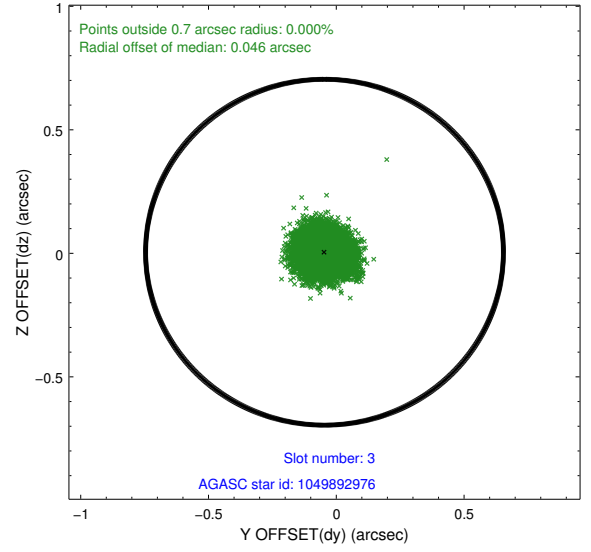
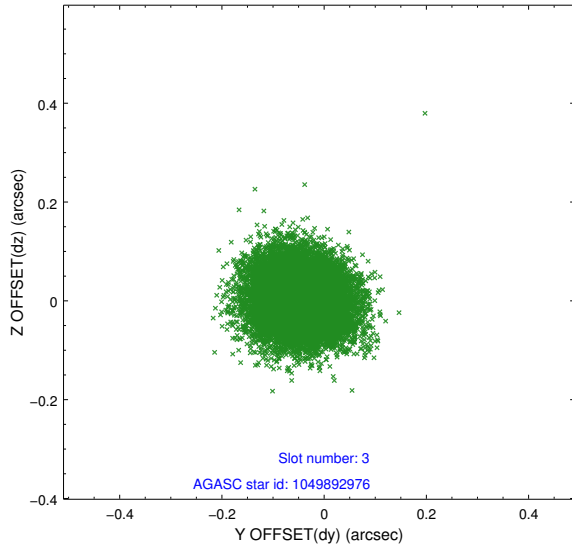
### Slot Statistics

slot	status	id	mag	n_pts	med_dy	med_dz	dr1	dr2	ra	dec	mean_y	mean_z
0	FID	ACIS-I-1	7.24	6721	0.012	0.010	0.015	0.031	0.000000	0.000000	933.77	-833.77
1	FID	ACIS-I-5	7.23	6720	-0.157	0.033	0.012	0.025	0.000000	0.000000	-1814.45	1063.71
2	FID	ACIS-I-6	7.25	6721	0.052	0.028	0.010	0.017	0.000000	0.000000	399.26	1708.30
3	GUIDE	1049892976	9.07	13436	-0.046	0.004	0.073	0.116	342.027329	-44.256291	1035.76	66.06
4	GUIDE	1049895656	8.18	13440	0.095	0.231	0.068	0.109	342.951891	-44.784560	-1716.40	-1227.04
5	GUIDE	1049899312	7.33	13440	0.027	-0.040	0.050	0.081	341.861406	-44.965161	-1078.13	1557.49
6	GUIDE	1107166720	8.48	13437	-0.125	-0.433	0.073	0.124	341.717008	-45.051250	-1198.79	2022.63
7	GUIDE	1049896336	7.62	13440	0.040	0.243	0.059	0.093	343.254788	-44.858843	-2301.87	-1799.19

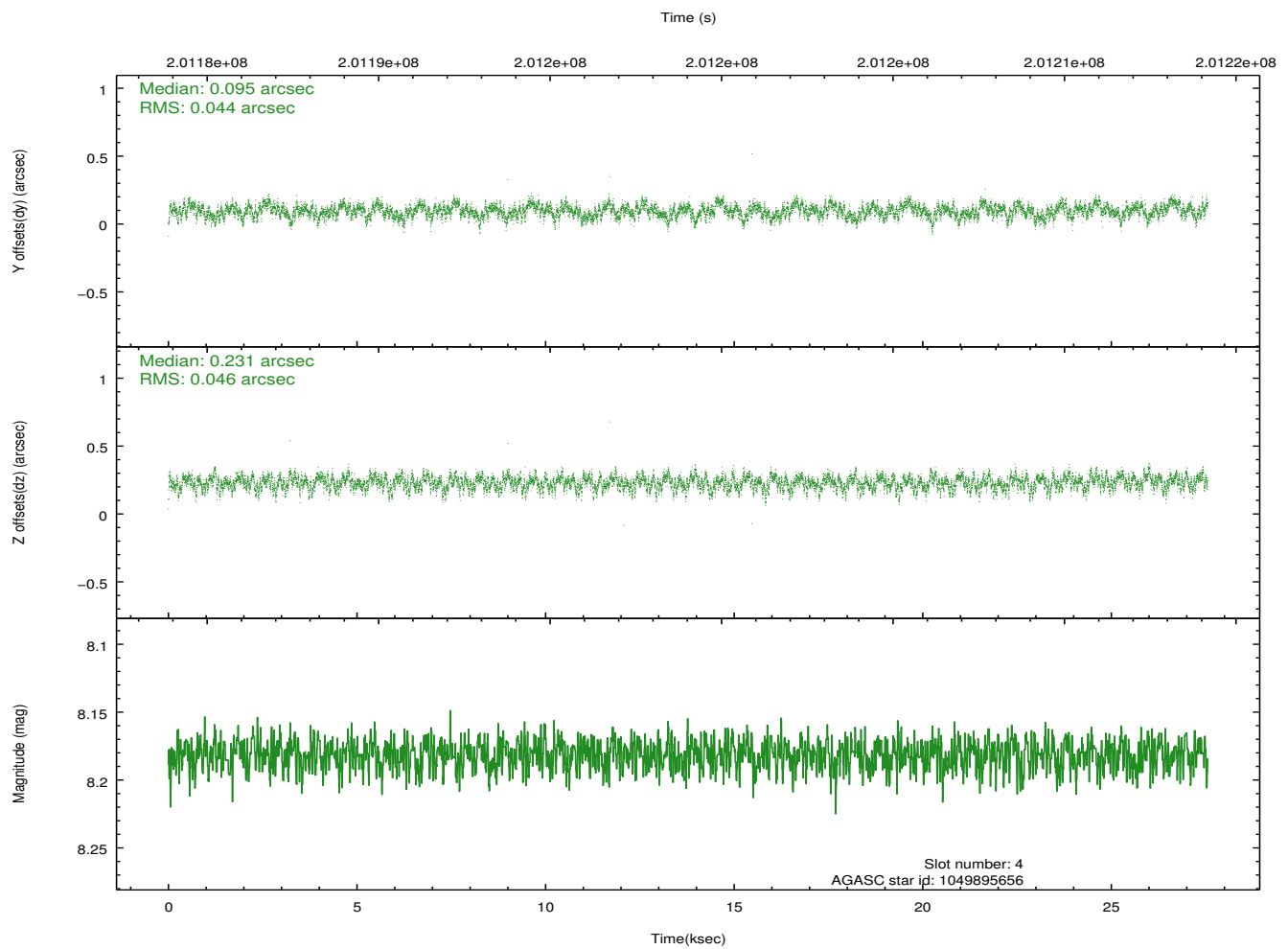
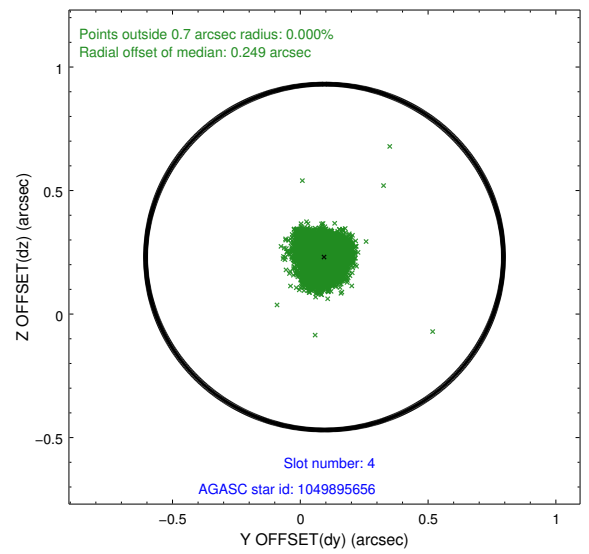
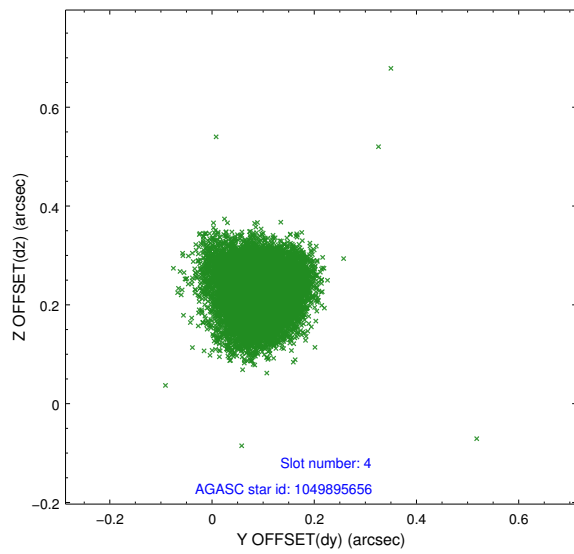
∞

## 2.4 Star Slots

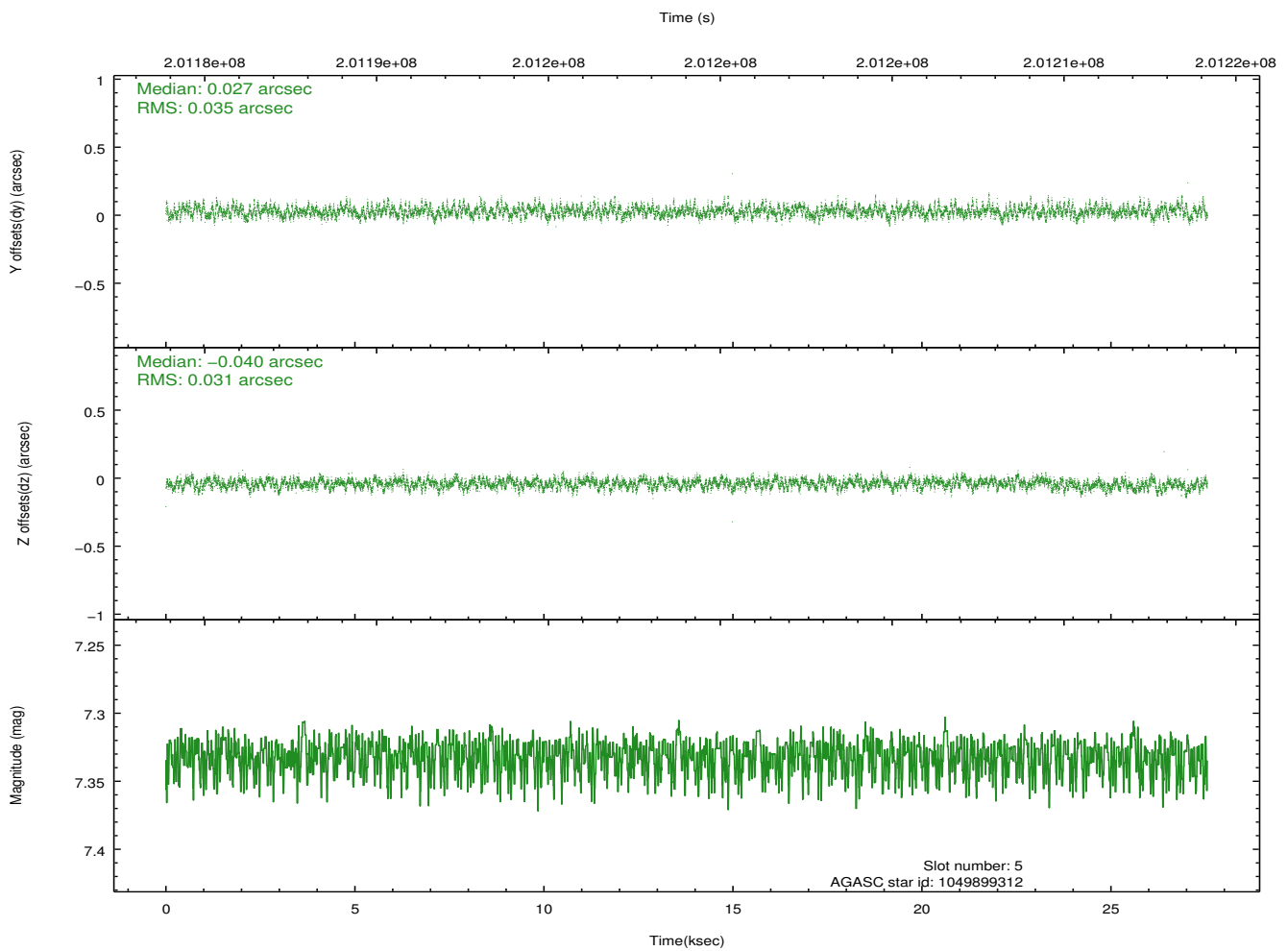
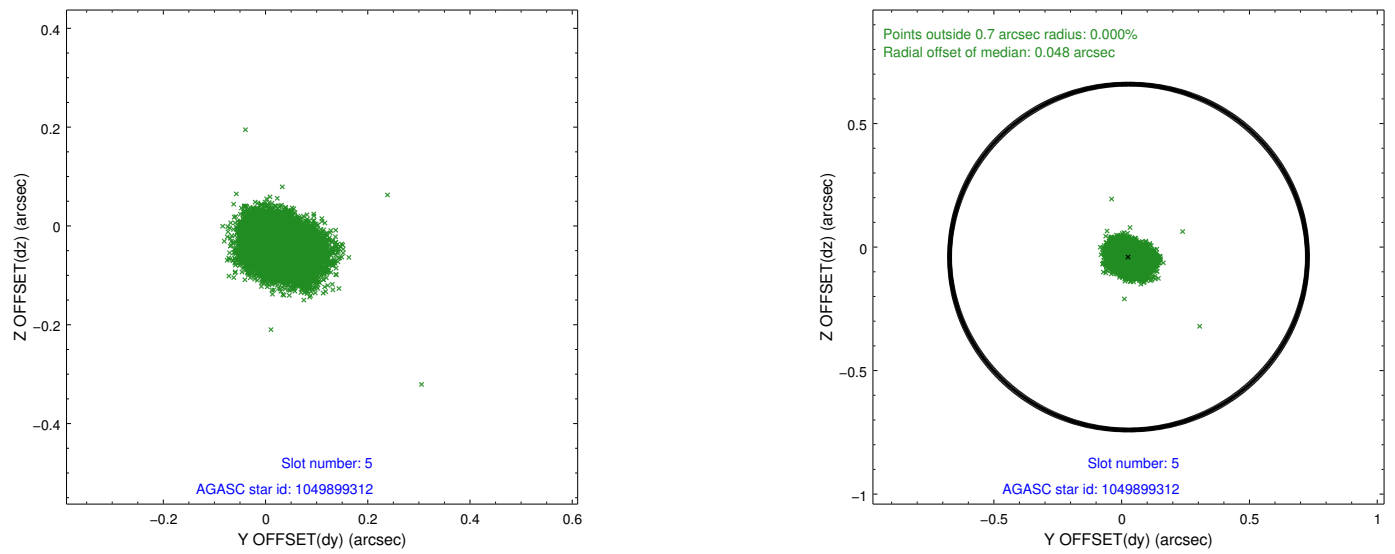
### 2.4.1 Slot 3



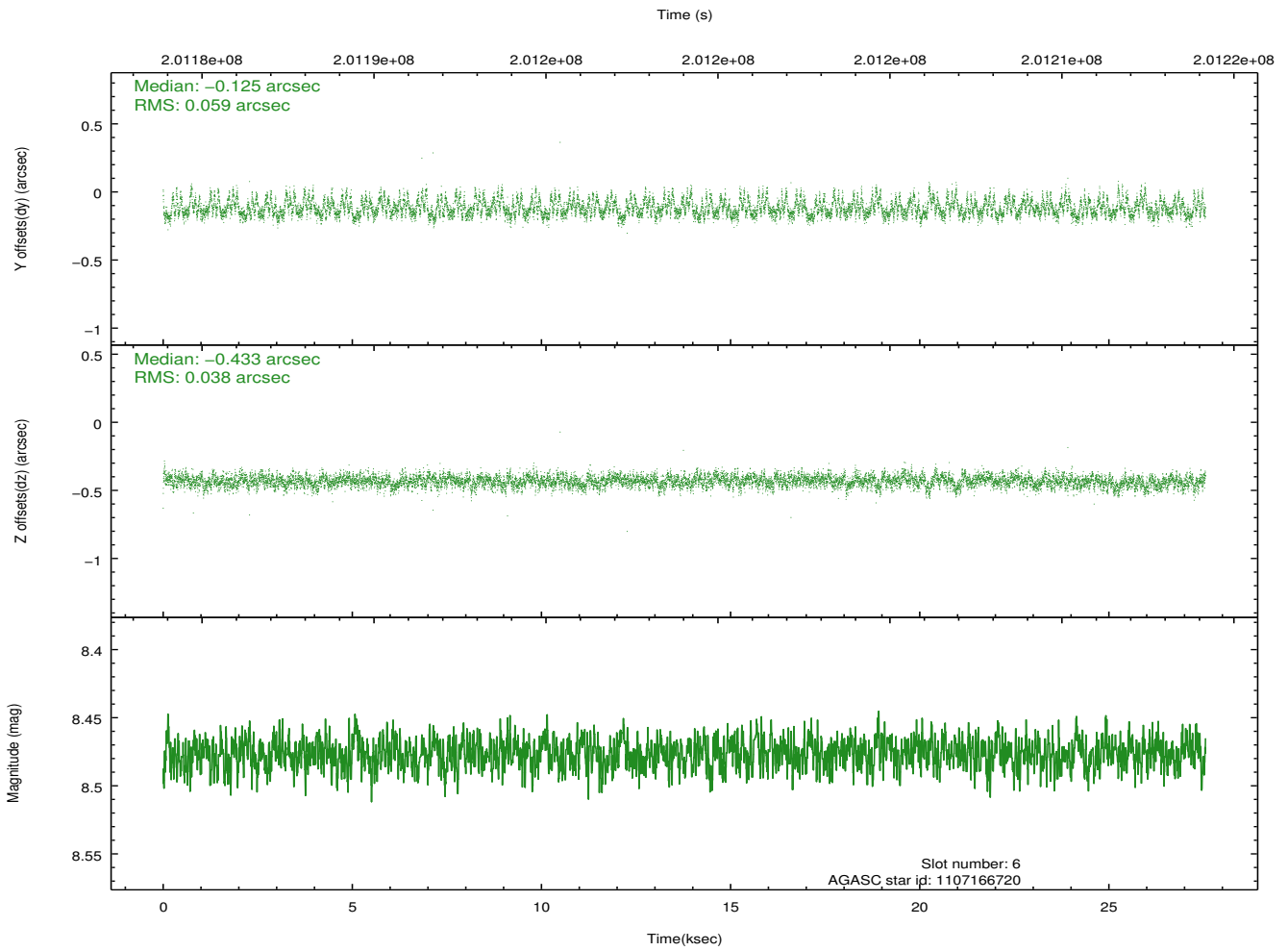
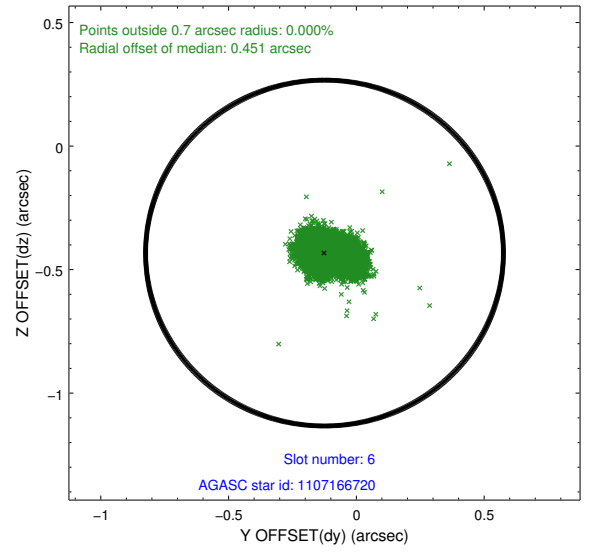
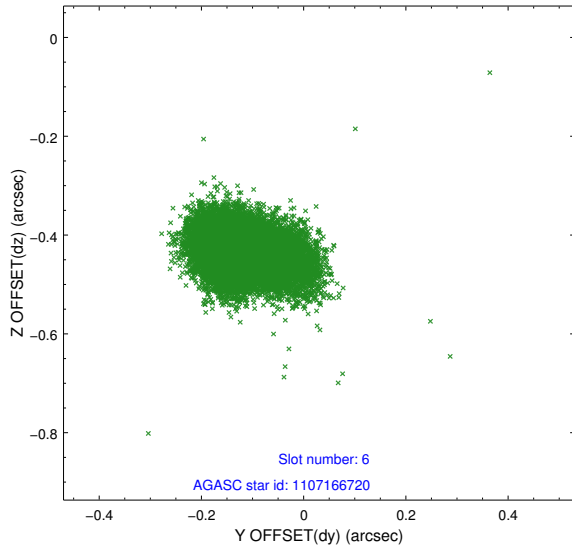
## 2.4.2 Slot 4



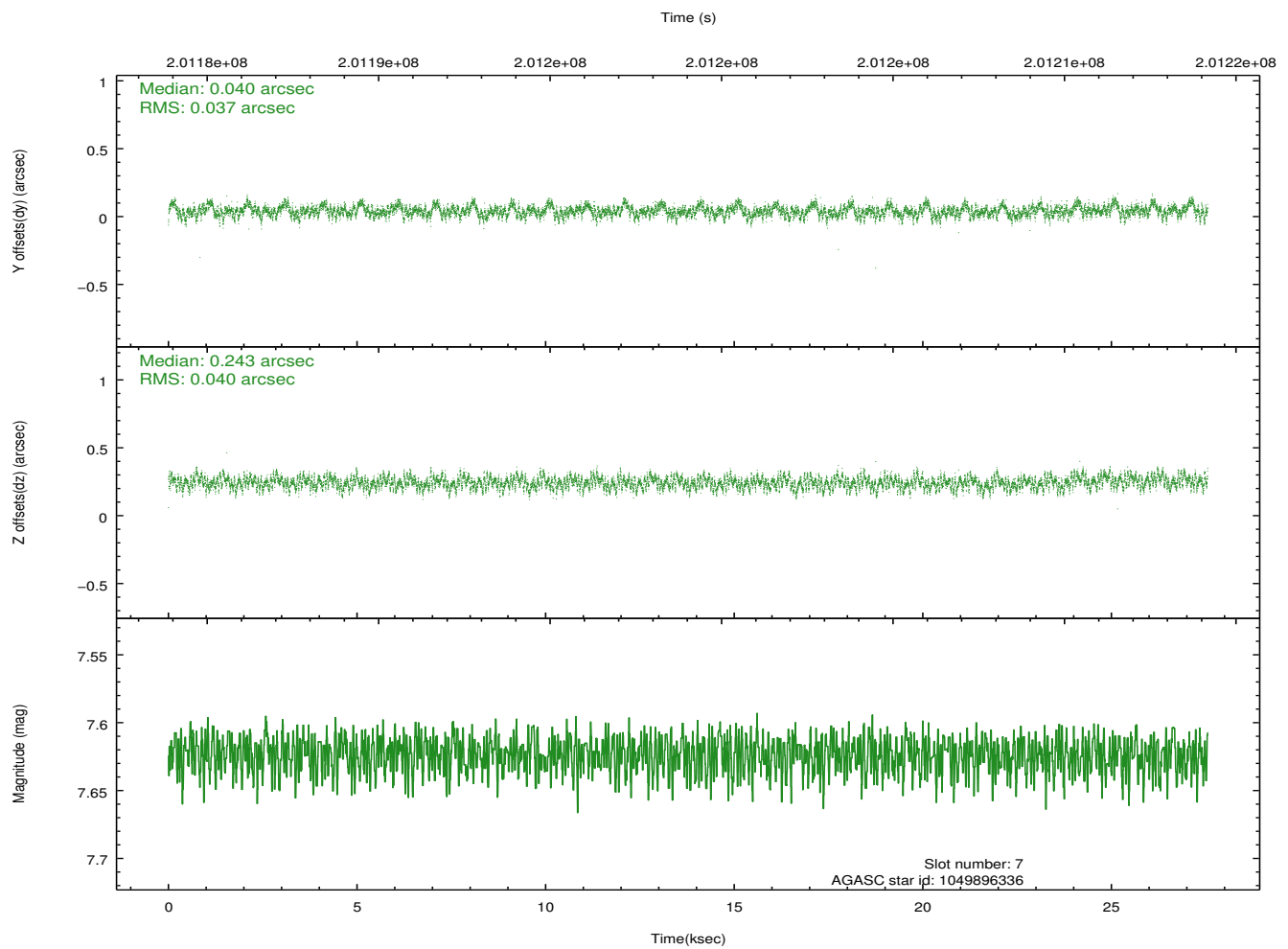
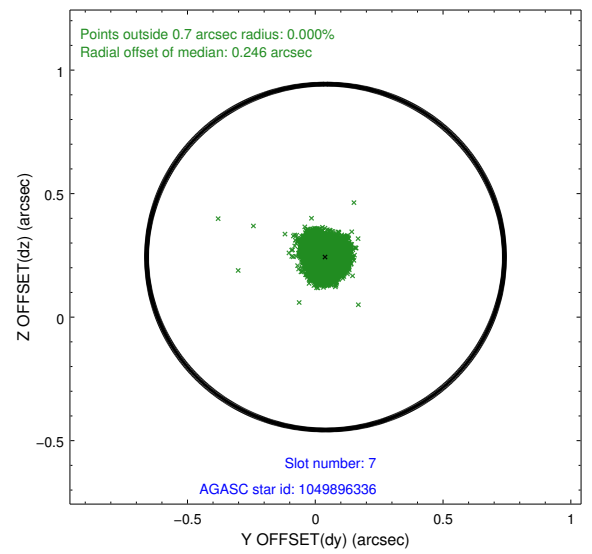
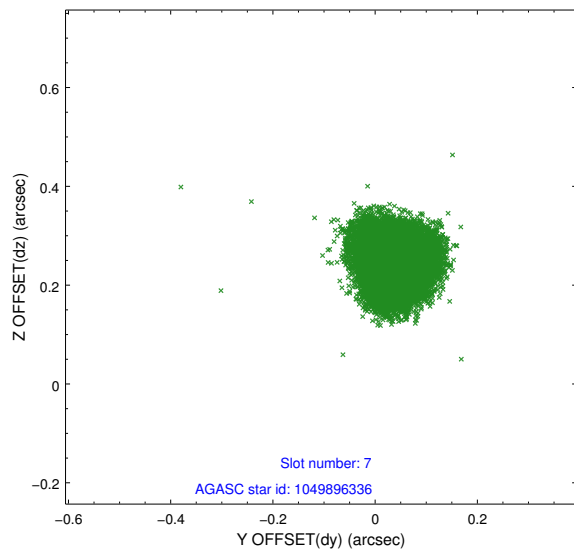
### 2.4.3 Slot 5



### 2.4.4 Slot 6

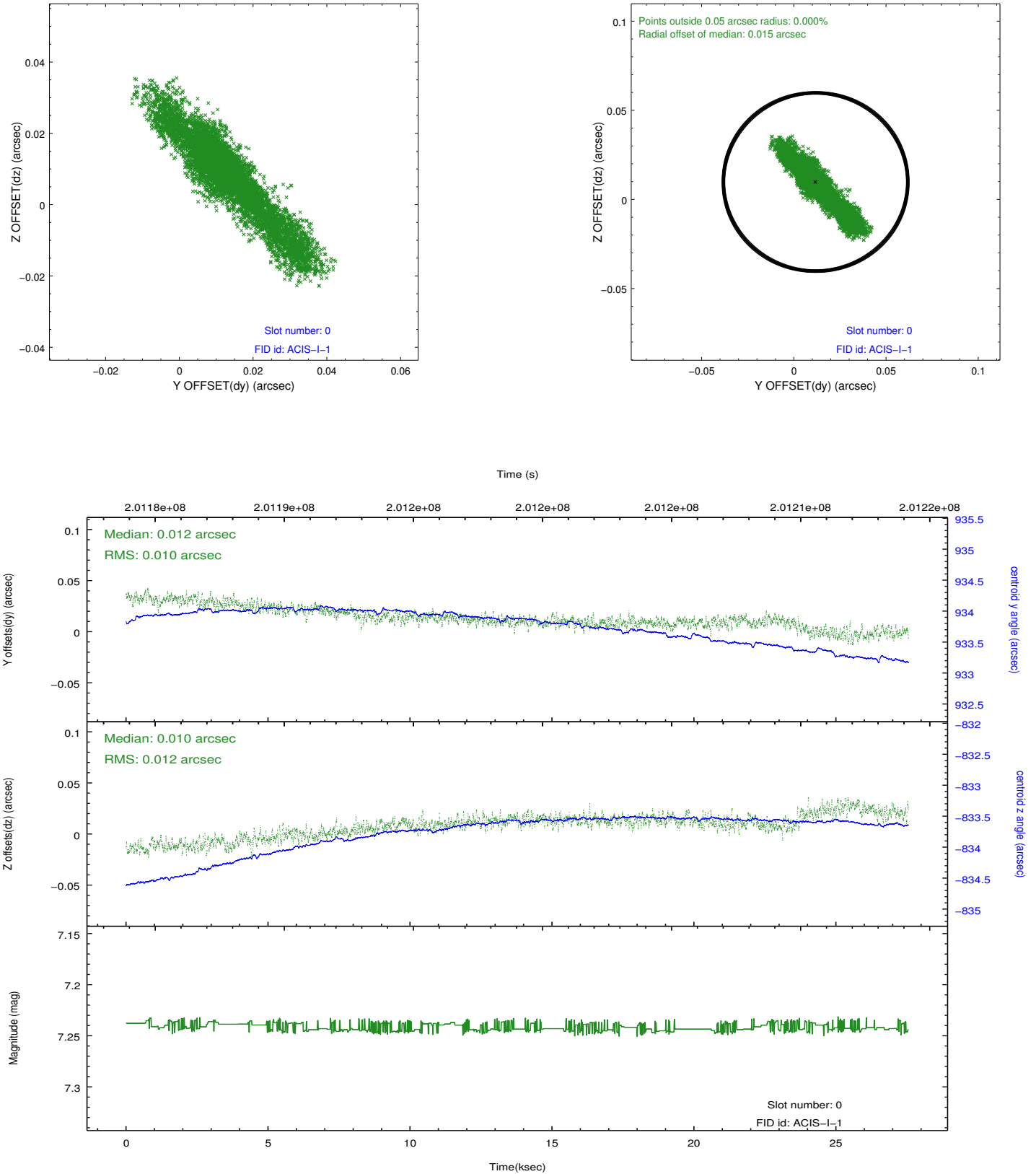


## 2.4.5 Slot 7

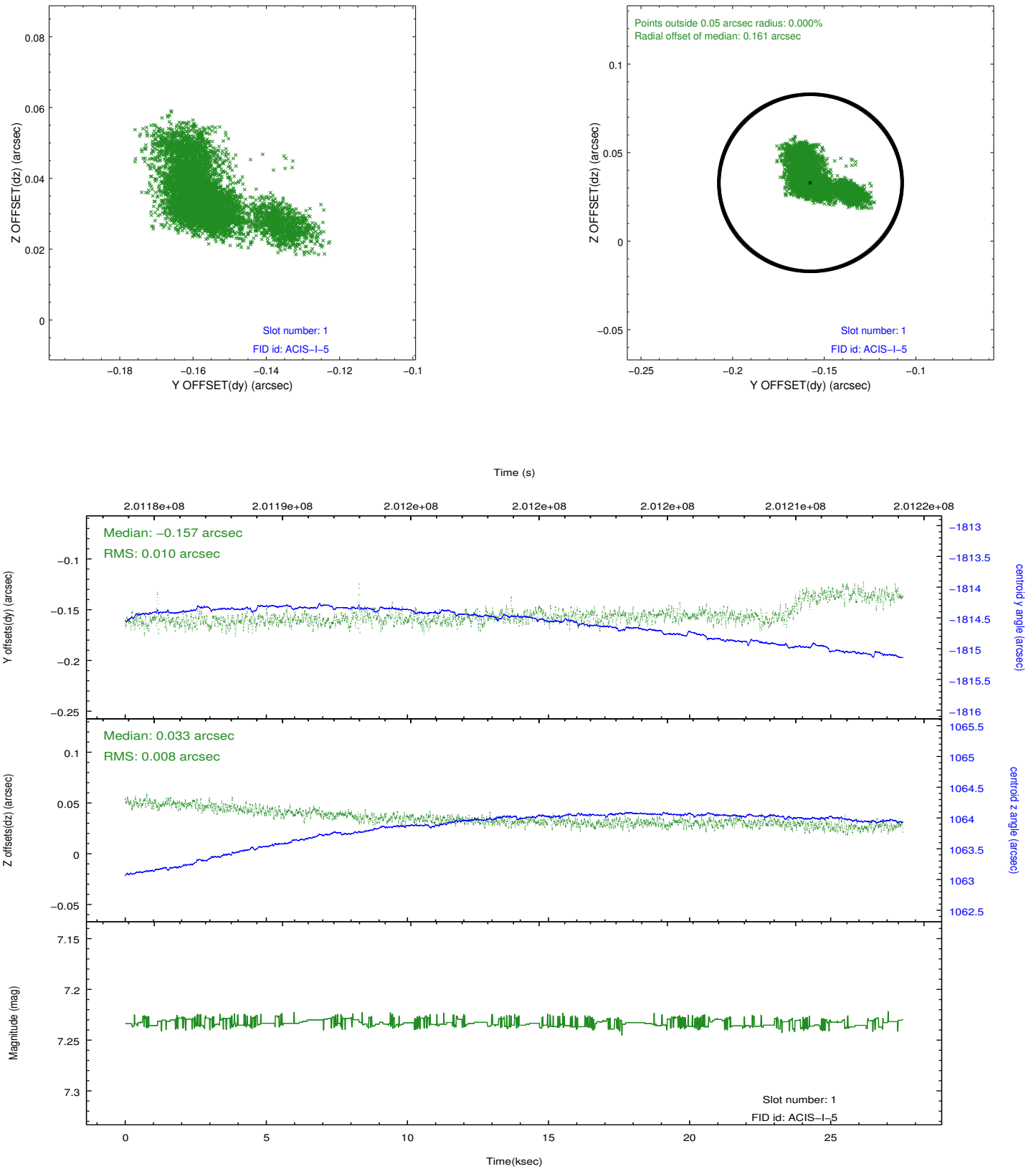


## 2.5 FID Slots

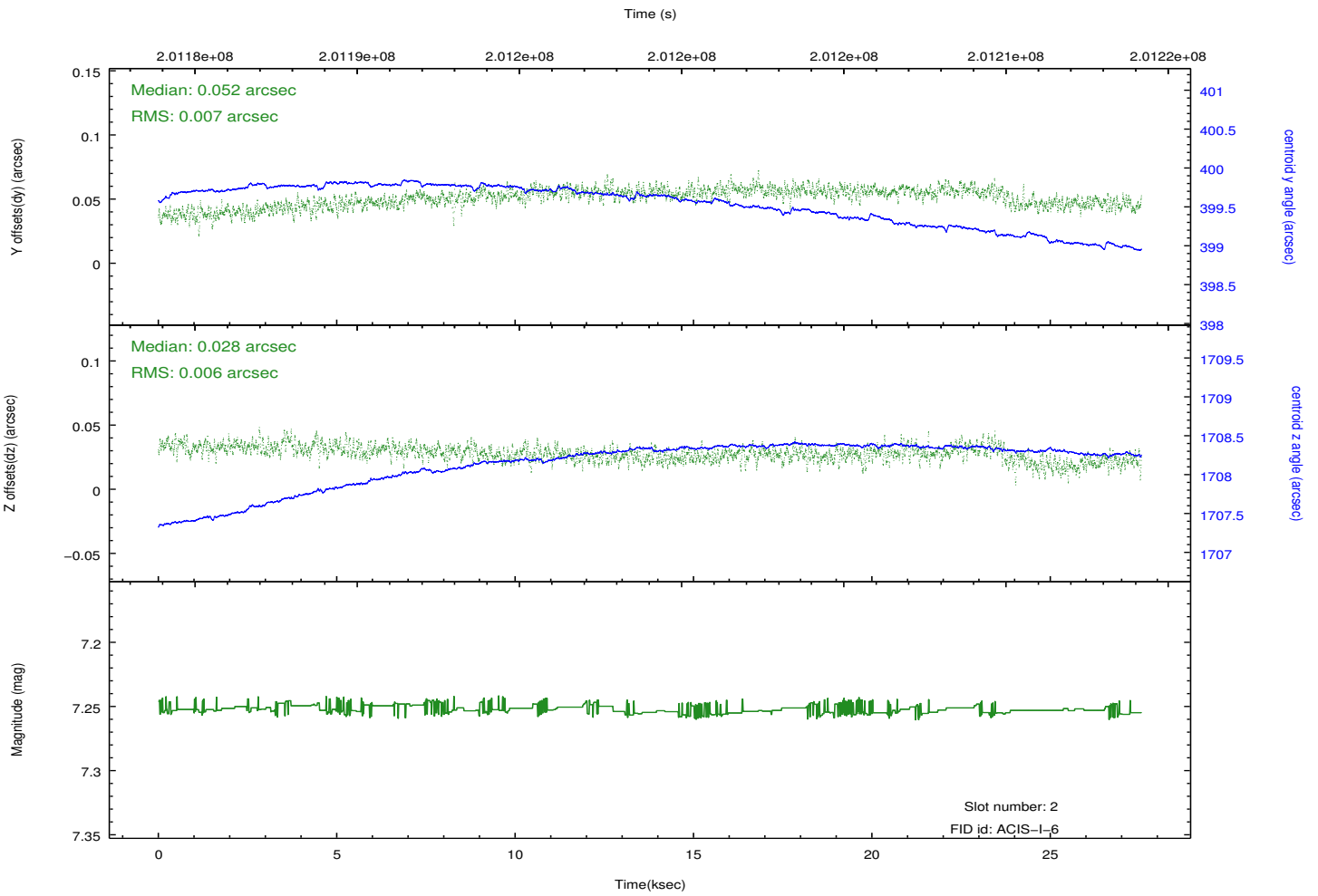
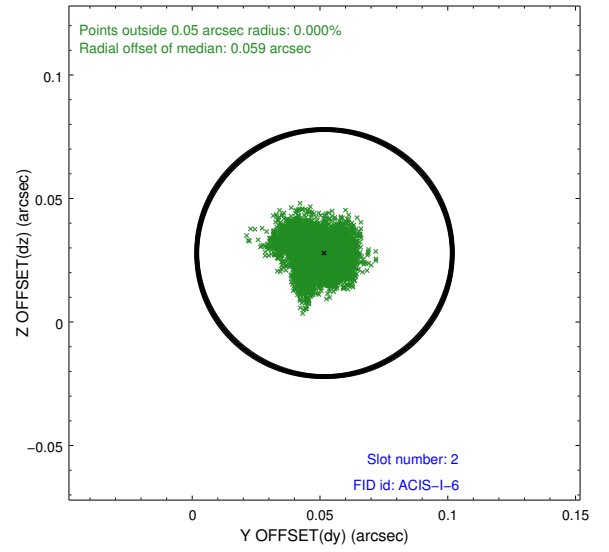
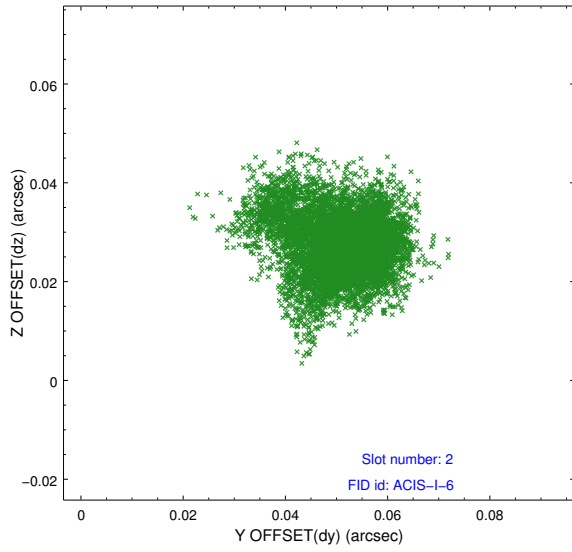
### 2.5.1 Slot 0



## 2.5.2 Slot 1



### 2.5.3 Slot 2



# A Summary

## A.1 Status

V&V Scientist	Jen Lauer
V&V Date (YYYY-MM-DD)	2012.12.17
V&V Edition	1
V&V Disposition and Status	OK
V&V Charge Time	27.075

## A.2 Comments