

V&V Reference Report

L2 ASCDS Version : 8.5

Observation 4986 - L2 Version 3
Chandra X-Ray Center

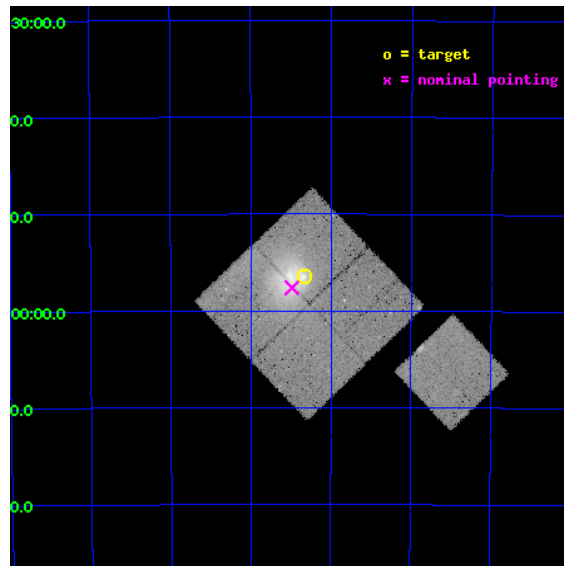
L2 Processing Date : Dec 7 2012

Contents

1	Front	2
2	OBI	3
2.1	OBI	3
2.1.1	Images	3
2.1.2	Bias	3
2.1.3	Parameters	4
2.1.4	Events	4
2.2	Compared Parameters	5
2.3	Aspect	6
2.4	Star Slots	9
2.4.1	Slot 3	9
2.4.2	Slot 4	10
2.4.3	Slot 5	11
2.4.4	Slot 6	12
2.4.5	Slot 7	13
2.5	FID Slots	14
2.5.1	Slot 0	14
2.5.2	Slot 1	15
2.5.3	Slot 2	16
A	Summary	17
A.1	Status	17
A.2	Comments	17

1 Front

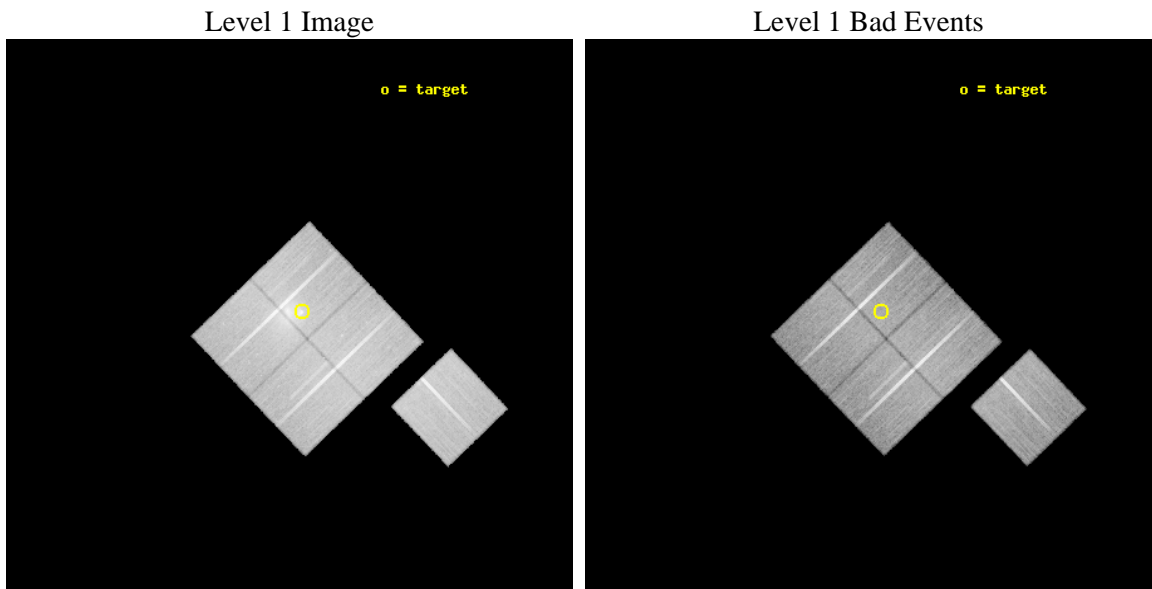
seq_num	800429	Sequence number
obs_id	4986	Observation id
title	THE MOST INTERESTING CLUSTER IN THE UNIVERSE	Proposal title
observer	Dr Maxim Markevitch	Principal investigator
object	1E0657-56	Source name
dtcycle	0	
cycle	P	events from which exps? Prim/Second/Both
ra_targ	104.5827	Observer's specified target RA [deg]
dec_targ	-55.9415	Observer's specified target Dec [deg]
ra_nom	104.6222671034	Nominal RA [deg]
dec_nom	-55.96038753693	Nominal Dec [deg]
roll_nom	136.24147268111	Nominal Roll [deg]
revision	3	Processing version of data
ontime	42038.976968557	Sum of GTIs [s]
liveltime	41489.706785818	Livetime [s]
ontime0	42038.976968557	Sum of GTIs [s]
ontime1	42045.258948863	Sum of GTIs [s]
ontime2	42045.258918941	Sum of GTIs [s]
ontime3	42045.258978754	Sum of GTIs [s]
ontime6	42042.117978603	Sum of GTIs [s]
l2events	168320	Number of level 2 events



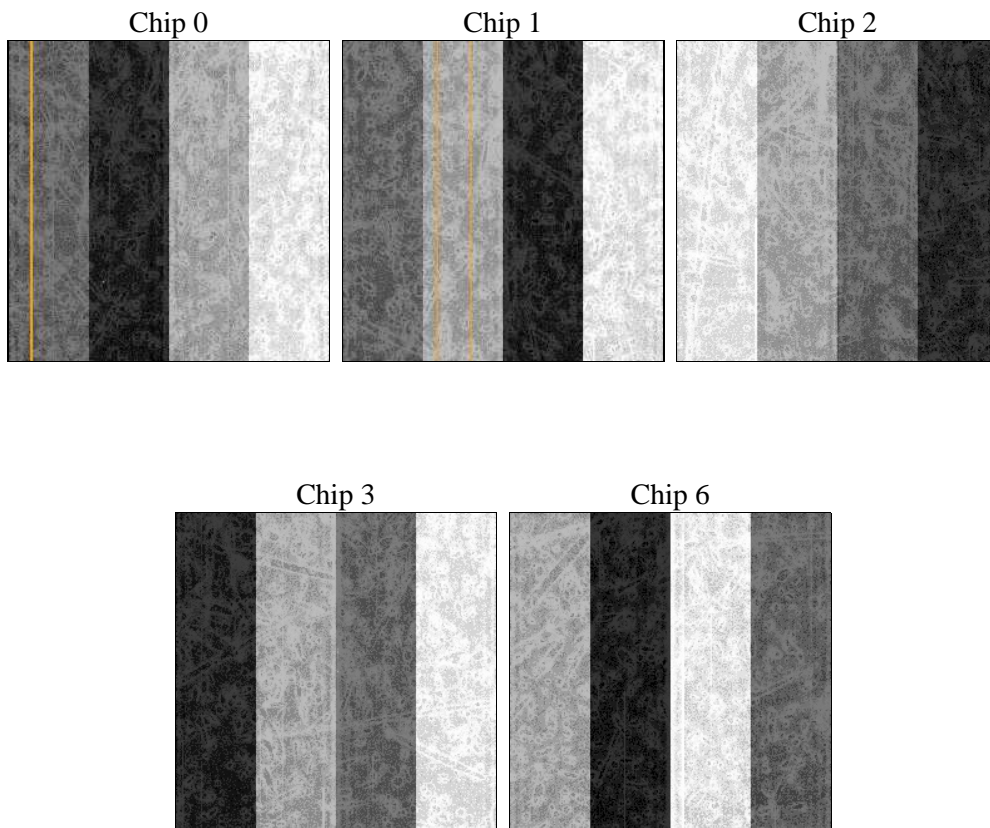
2 OBI

2.1 OBI

2.1.1 Images



2.1.2 Bias



2.1.3 Parameters

obi_num	0	Obi number	sched_exp_time	42000.000000	[s] Scheduled observation exposure time
ascdsver	8.5	Processing system revision	ontime	42038.976968557	Sum of GTIs [s]
caldbver	4.5.4	 	ontime0	42038.976968557	Sum of GTIs [s]
date	2012-12-07T18:44:19	Date and time of file creation	ontime1	42045.258948863	Sum of GTIs [s]
revision	3	Processing version of data	ontime2	42045.258918941	Sum of GTIs [s]
			ontime3	42045.258978754	Sum of GTIs [s]
			ontime6	42042.117978603	Sum of GTIs [s]
			l1events	1395508	Number of level 1 events

2.1.4 Events

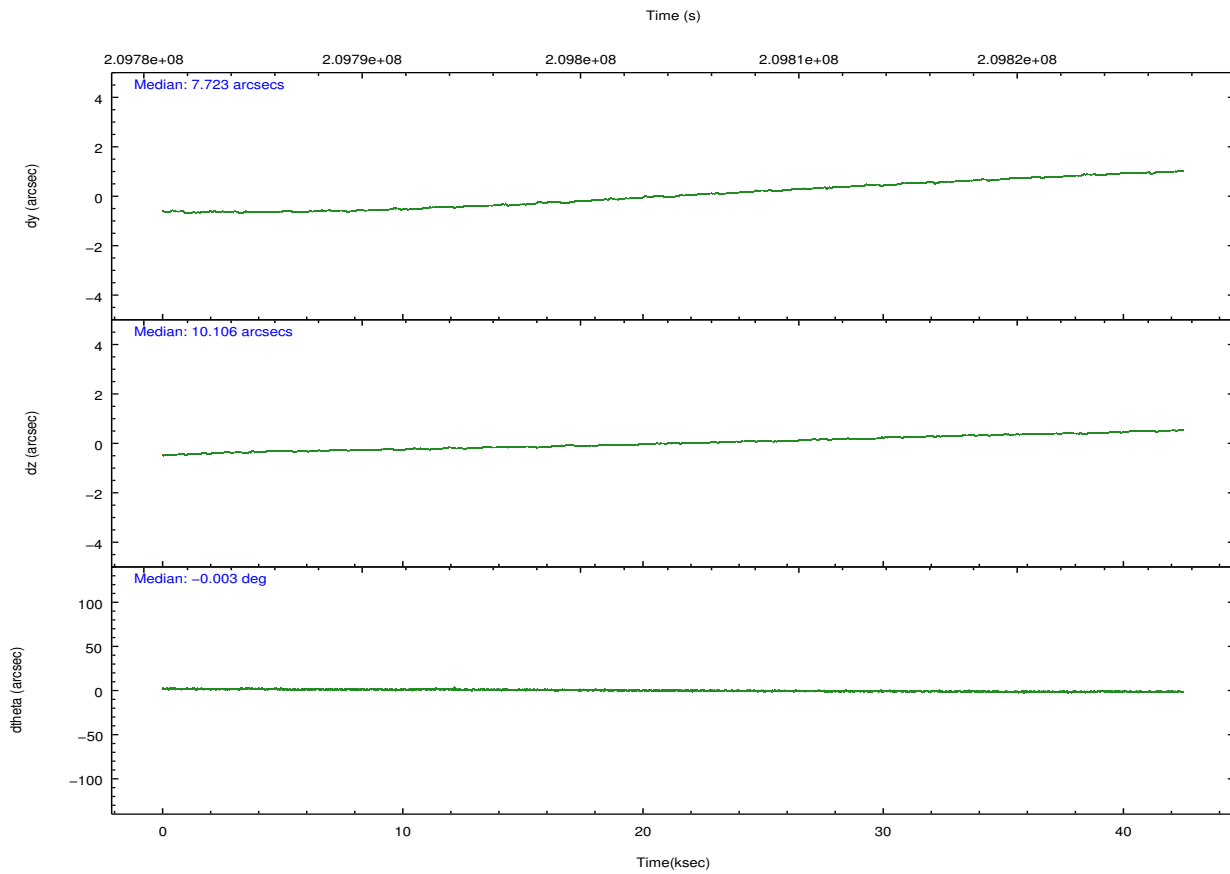
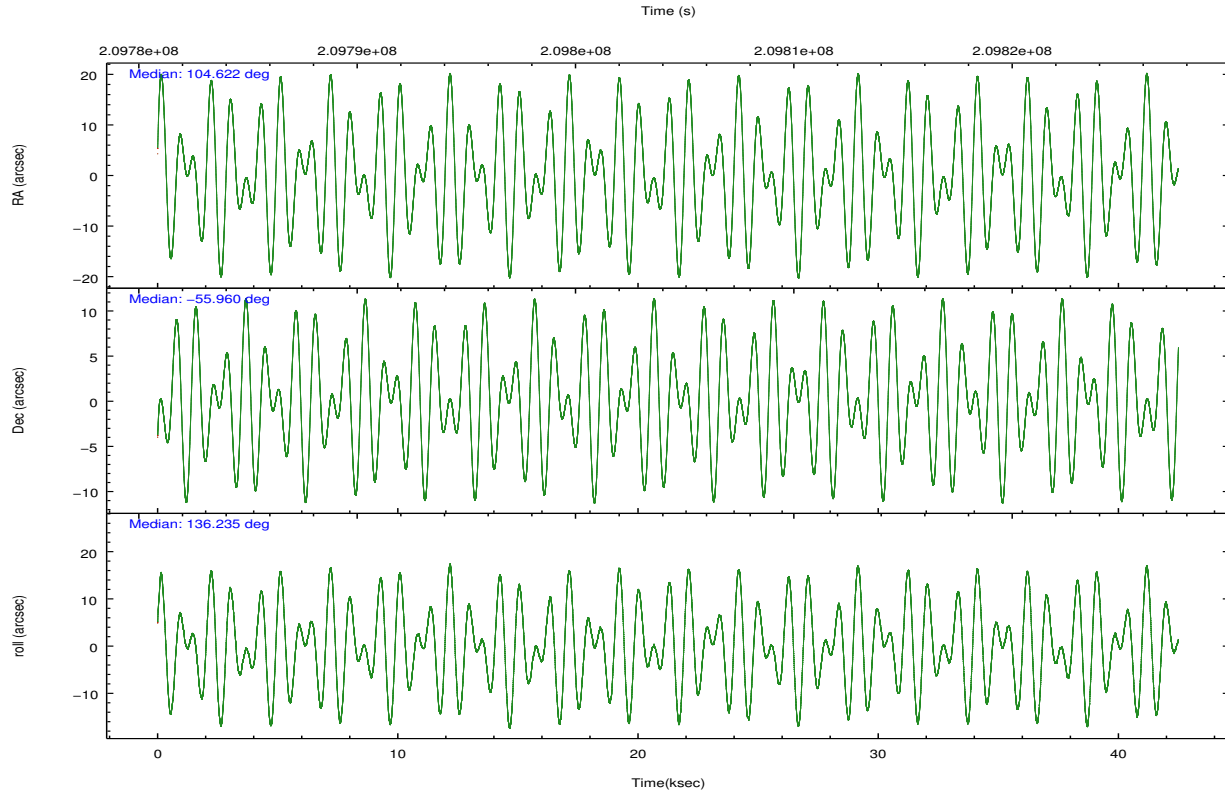
	ccd 0	ccd 1	ccd 2	ccd 3	ccd 6
level 1 events	290734	279589	285840	266973	272372
rejected events	229040	227648	258825	240549	244523
rejected %	78%	81%	90%	90%	89%

	ccd 0	ccd 1	ccd 2	ccd 3	ccd 6
grade 0 events	37680	28733	10281	10036	10062
	12%	10%	3%	3%	3%
grade 1 events	312	189	137	161	113
	0%	0%	0%	0%	0%
grade 2 events	9620	8735	6179	5509	5849
	3%	3%	2%	2%	2%
grade 3 events	4227	3831	2873	3020	3135
	1%	1%	1%	1%	1%
grade 4 events	3968	3932	2924	2850	3045
	1%	1%	1%	1%	1%
grade 5 events	9422	10059	8741	10572	10385
	3%	3%	3%	3%	3%
grade 6 events	6215	6720	4761	5010	5765
	2%	2%	1%	1%	2%
grade 7 events	219290	217390	249944	229815	234018
	75%	77%	87%	86%	85%

2.2 Compared Parameters

Parameter	Planned	Actual	Parameter	Planned	Actual
Instrument	ACIS	ACIS	Obspar format version number	7	7
Detector	ACIS-01236	ACIS-01236	Obspar file type	PREDICTED	ACTUAL
Grating	NONE	NONE	Obspar update status	NONE	UPDATED
Data mode	VFAINT	VFAINT	Number of optional ACIS chips dropped	0	0
Observation mode	POINTING	POINTING	On-chip summing requested	N	N
[deg] Pointing RA	104.669835	104.6222671033977	Subarray requested	NONE	NONE
[deg] Pointing Dec	-55.966791	-55.96038753693013	Alternating exposures requested	N	N
[deg] Pointing Roll	136.072203	136.2414726811081	[s] Primary exposure time	0.000000	3.1
[mm] SIM focus pos	-0.782348	-0.7809083437167272			
[mm] SIM defocus	0	0.001439871863259334			
[mm] SIM translation stage pos	-242.592463	-242.5987405016197			
[mm] SIM translation stage offset	9	9.006287498690028			
[s] Observation start time (MET)	209783493.184000	209782407.95025			
Observation start date	2004-08-25T01:10:29	2004-08-25T00:53:27			
[s] Observation end time (MET)	209825493.184000	209826210.8147			
Observation end date	2004-08-25T12:50:29	2004-08-25T13:03:30			
Read mode	TIMED	TIMED			

2.3 Aspect



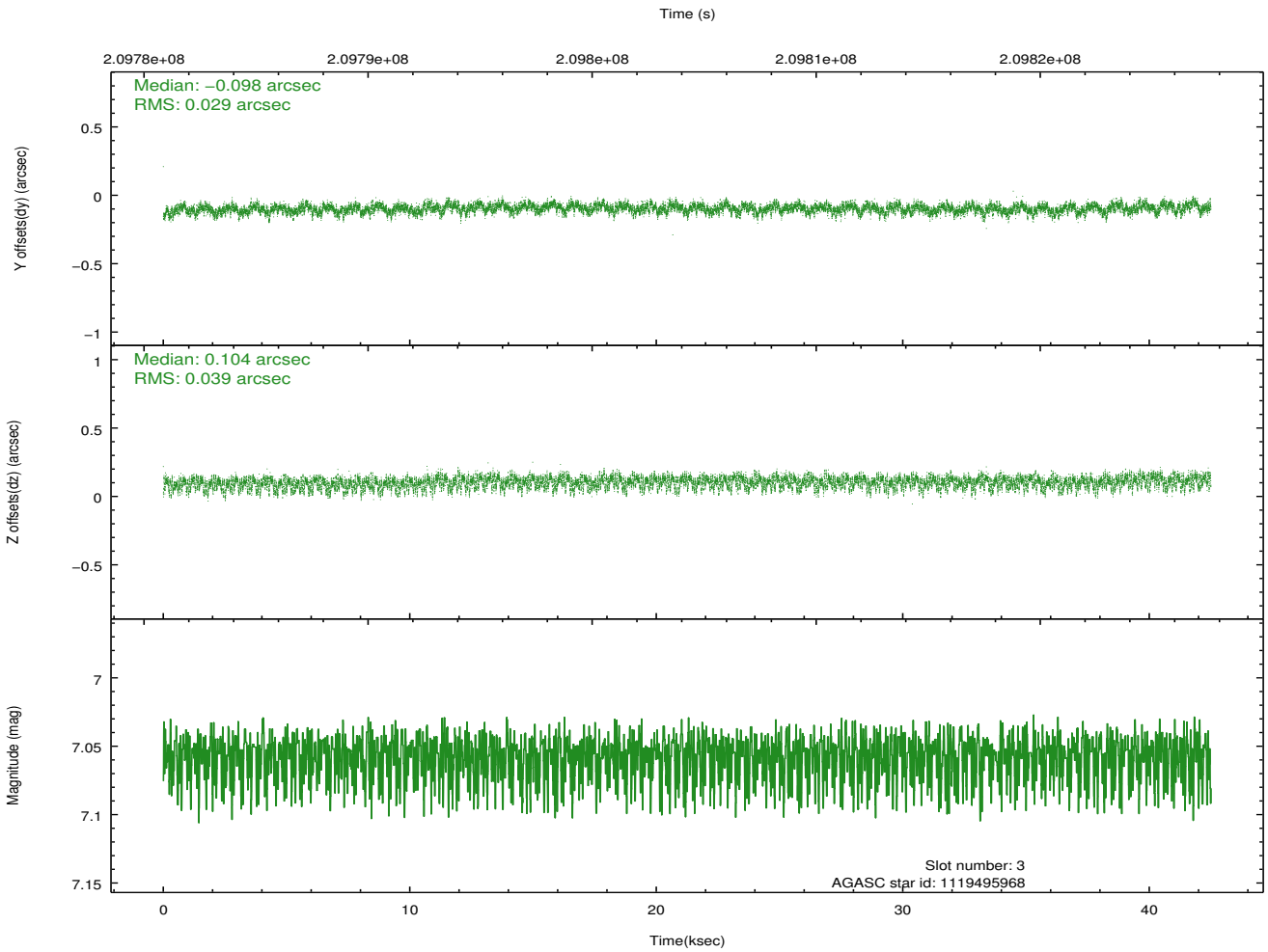
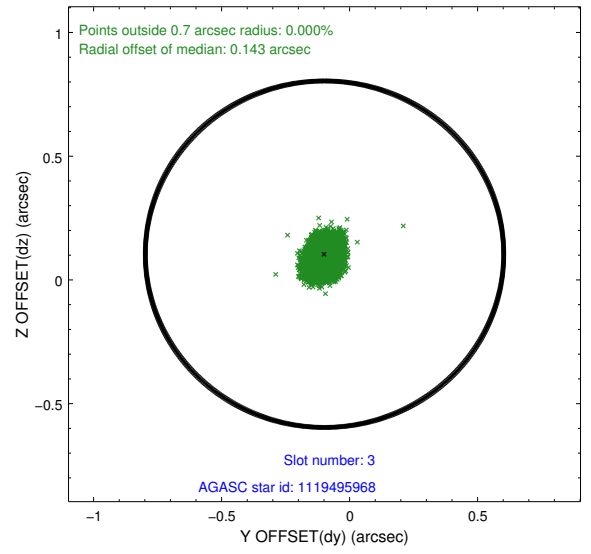
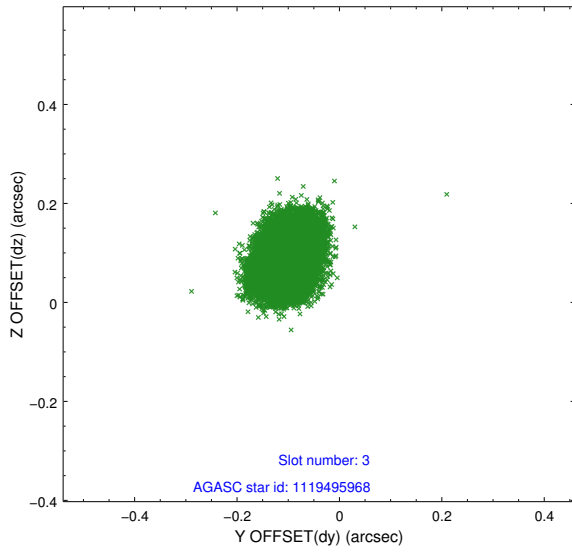
Slot Statistics

slot	status	id	mag	n_pts	med_dy	med_dz	dr1	dr2	ra	dec	mean_y	mean_z
0	FID	ACIS-I-1	7.28	10366	-0.052	0.119	0.011	0.019	0.000000	0.000000	932.01	-648.36
1	FID	ACIS-I-5	7.23	10365	-0.092	0.005	0.010	0.017	0.000000	0.000000	-1816.16	1249.00
2	FID	ACIS-I-6	7.24	10366	0.052	-0.054	0.010	0.016	0.000000	0.000000	397.62	1893.47
3	GUIDE	1119495968	7.06	20730	-0.098	0.104	0.051	0.086	105.873528	-55.948238	-1715.49	-1716.20
4	GUIDE	1119496704	7.86	20725	0.166	0.008	0.089	0.130	104.368364	-55.667750	1187.04	-349.52
5	GUIDE	1119499792	7.25	20729	-0.104	-0.040	0.056	0.089	104.350048	-56.101305	125.69	795.36
6	GUIDE	1120026344	6.70	20730	-0.020	-0.059	0.059	0.098	104.651539	-56.394853	-1042.88	1135.40
7	GUIDE	1119497816	8.89	20725	0.046	-0.019	0.095	0.149	105.863109	-55.810214	-1361.55	-2065.55

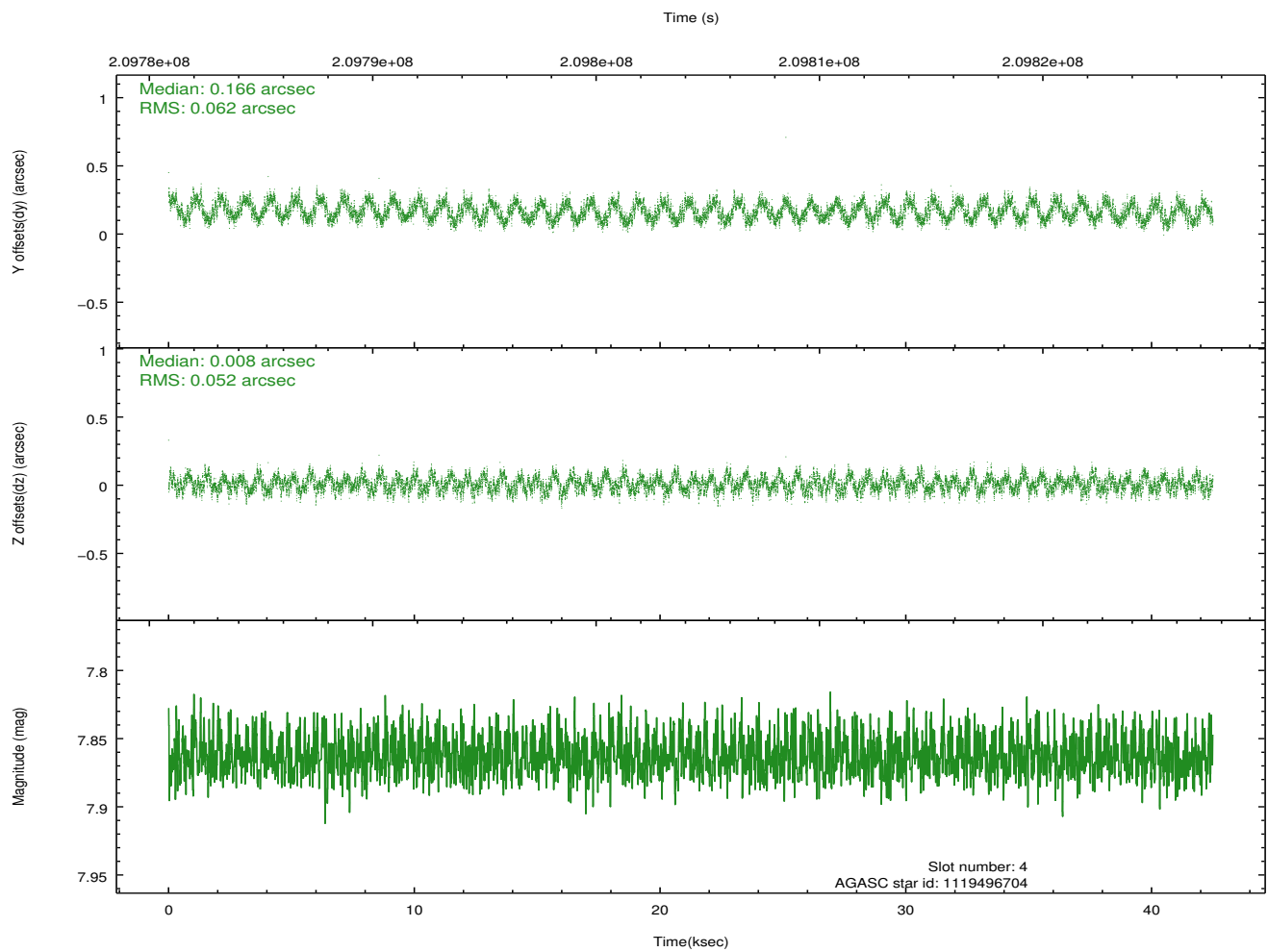
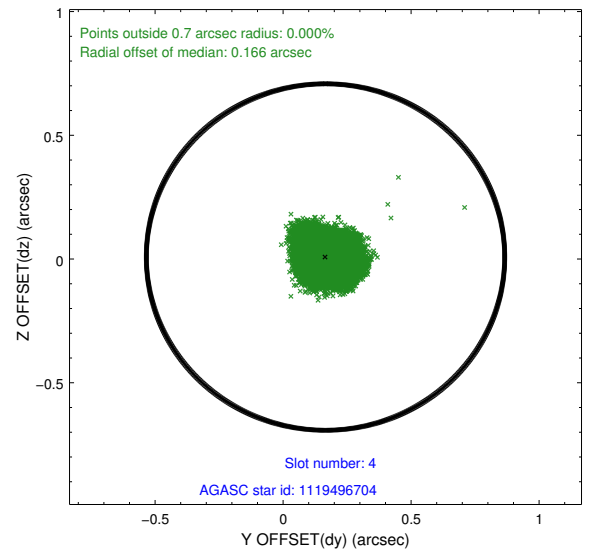
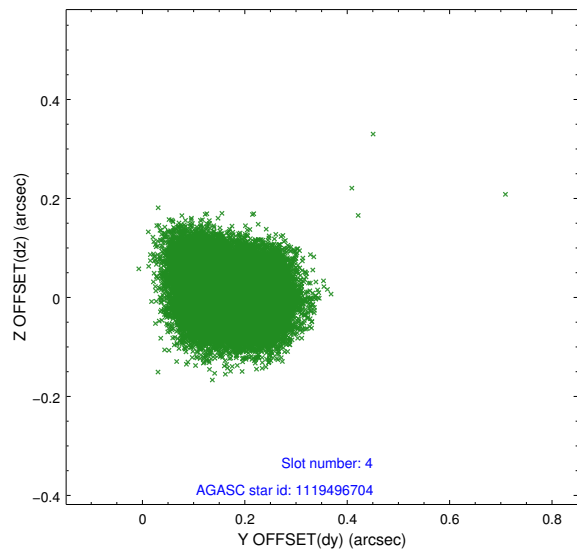
∞

2.4 Star Slots

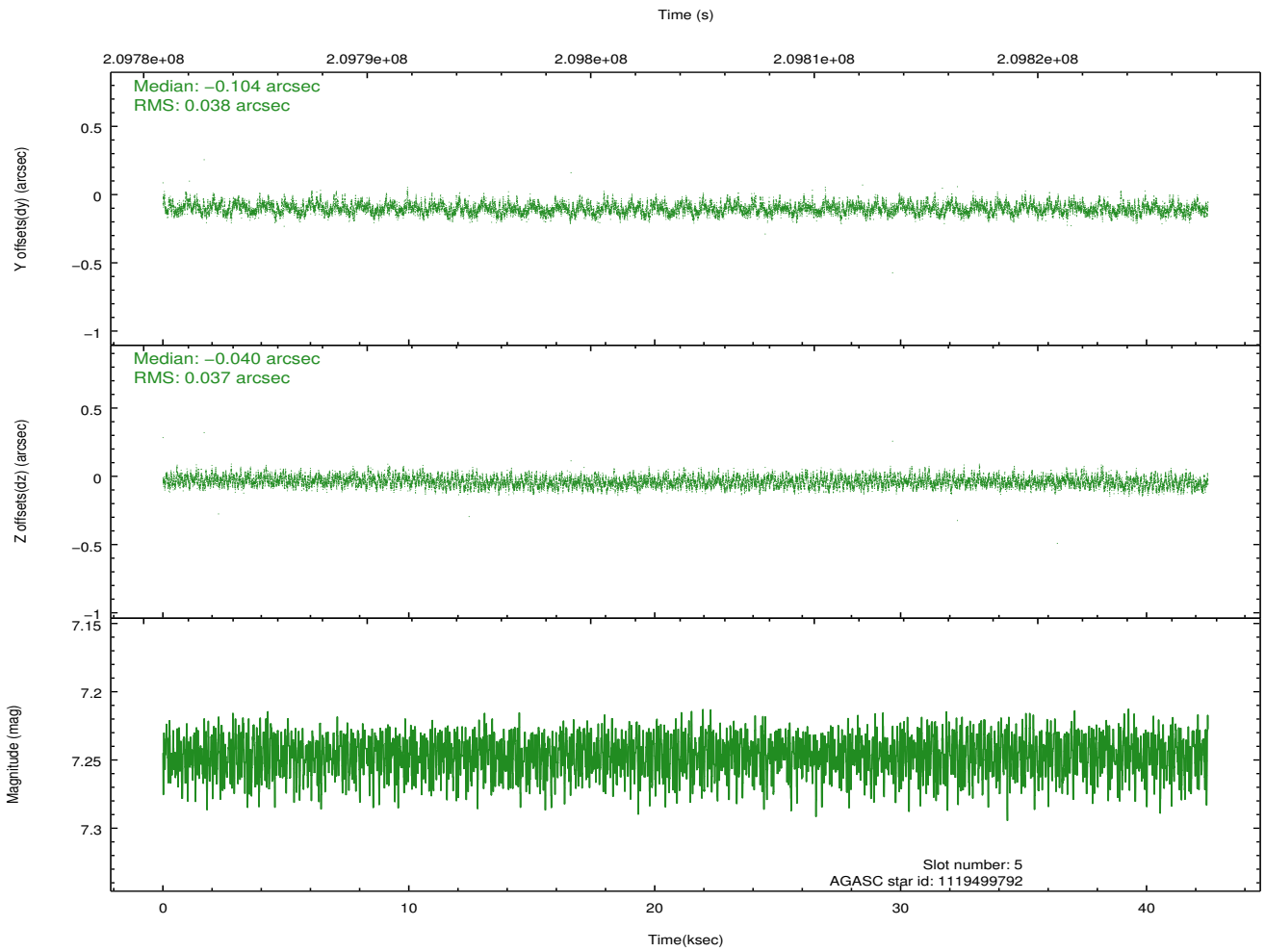
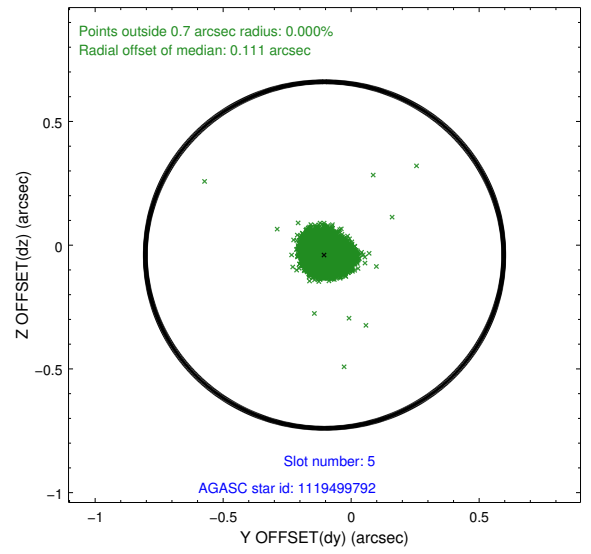
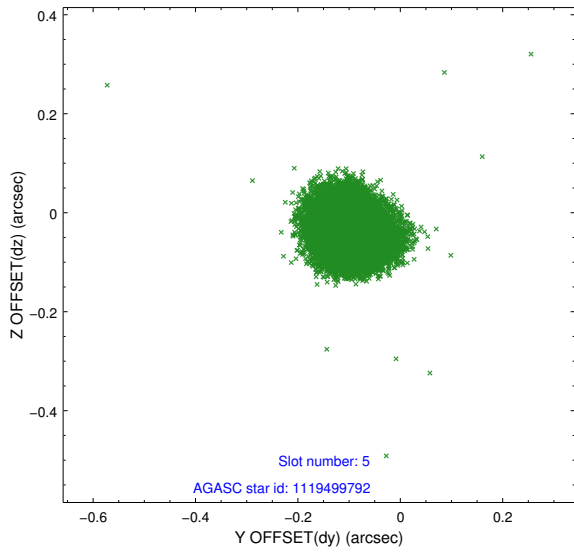
2.4.1 Slot 3



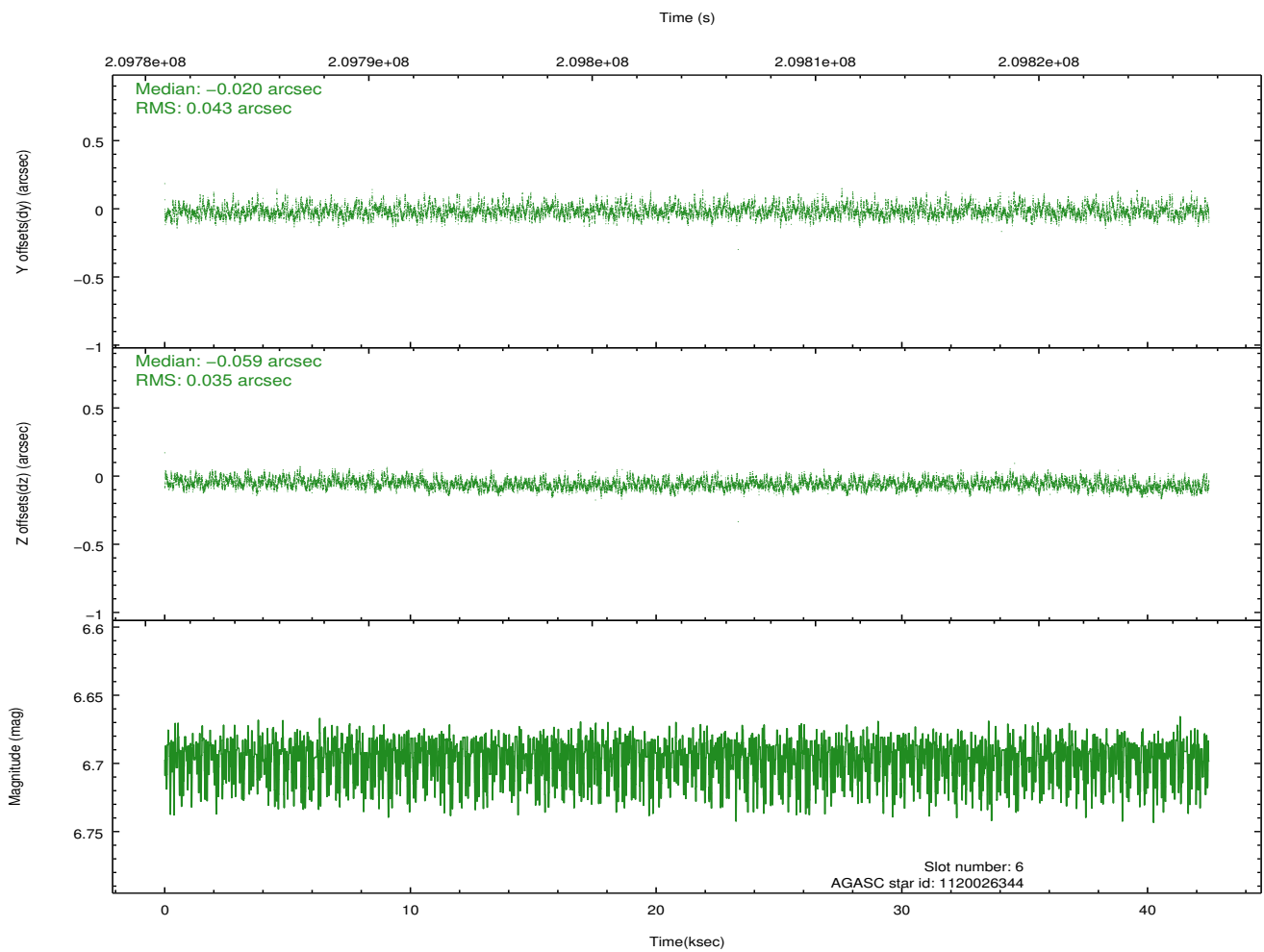
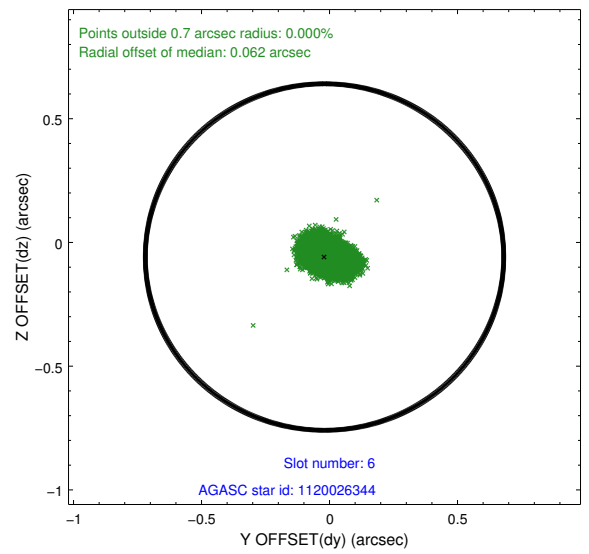
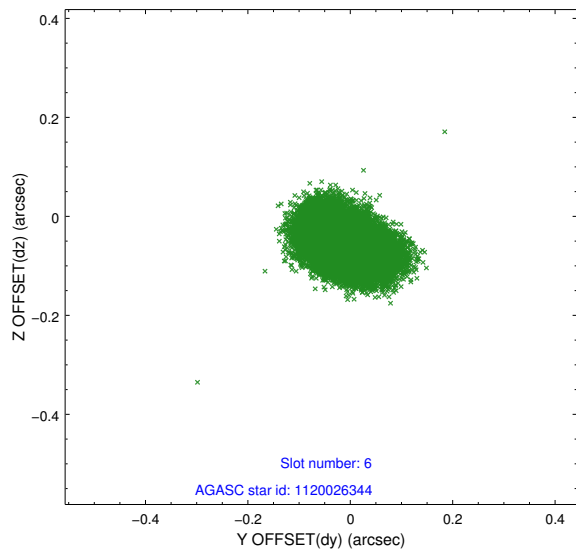
2.4.2 Slot 4



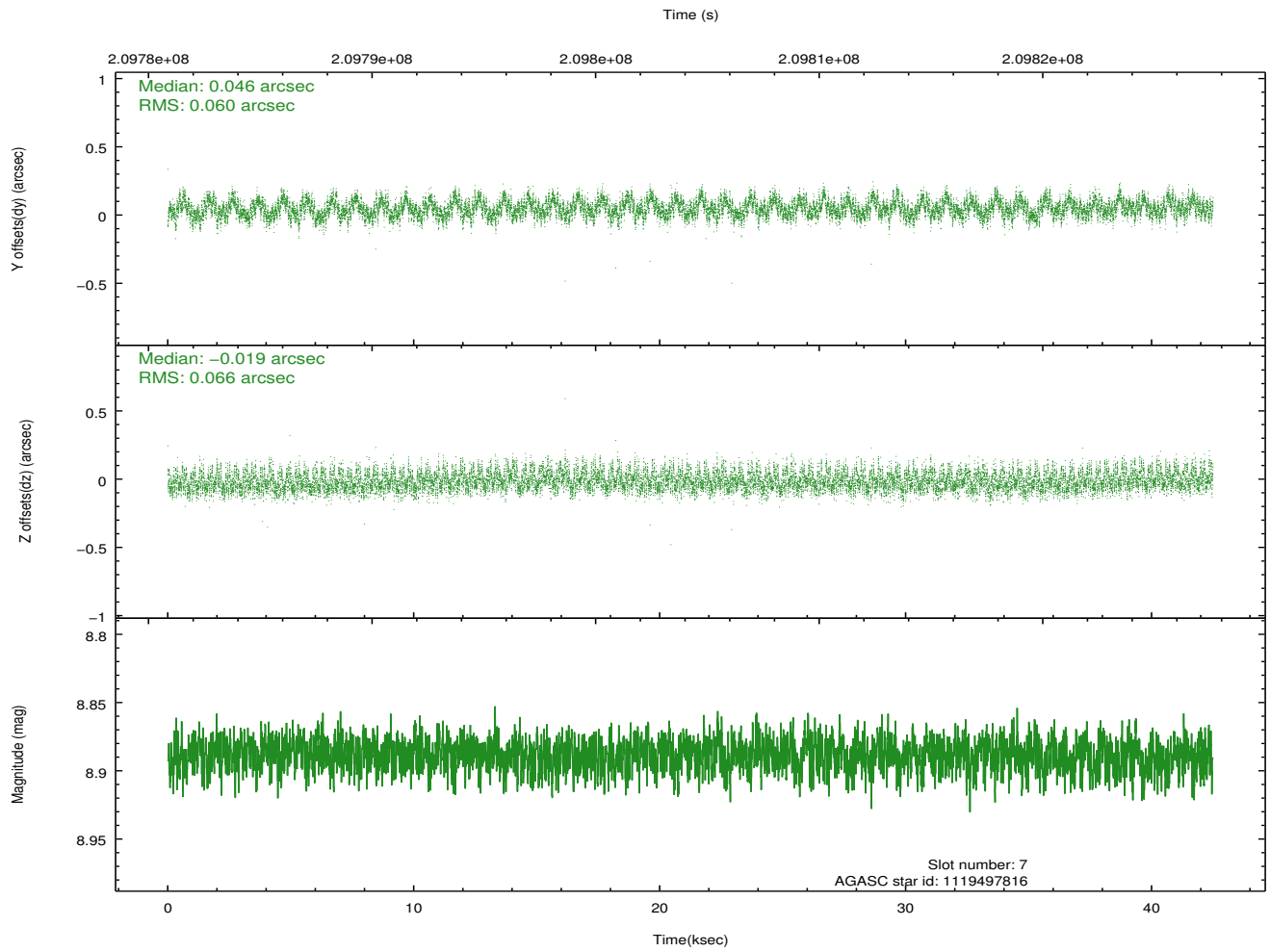
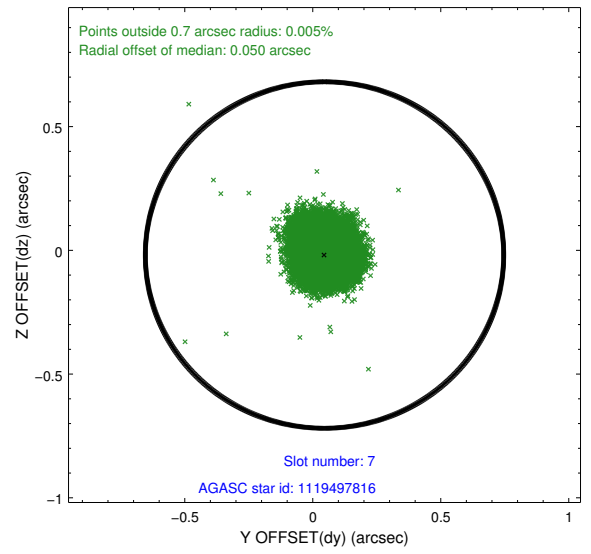
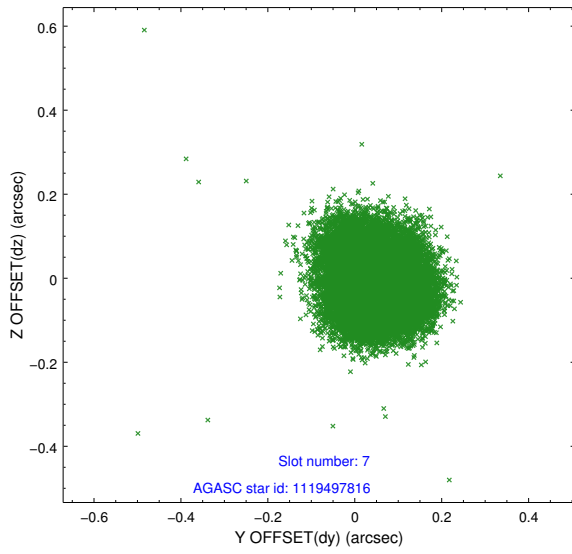
2.4.3 Slot 5



2.4.4 Slot 6

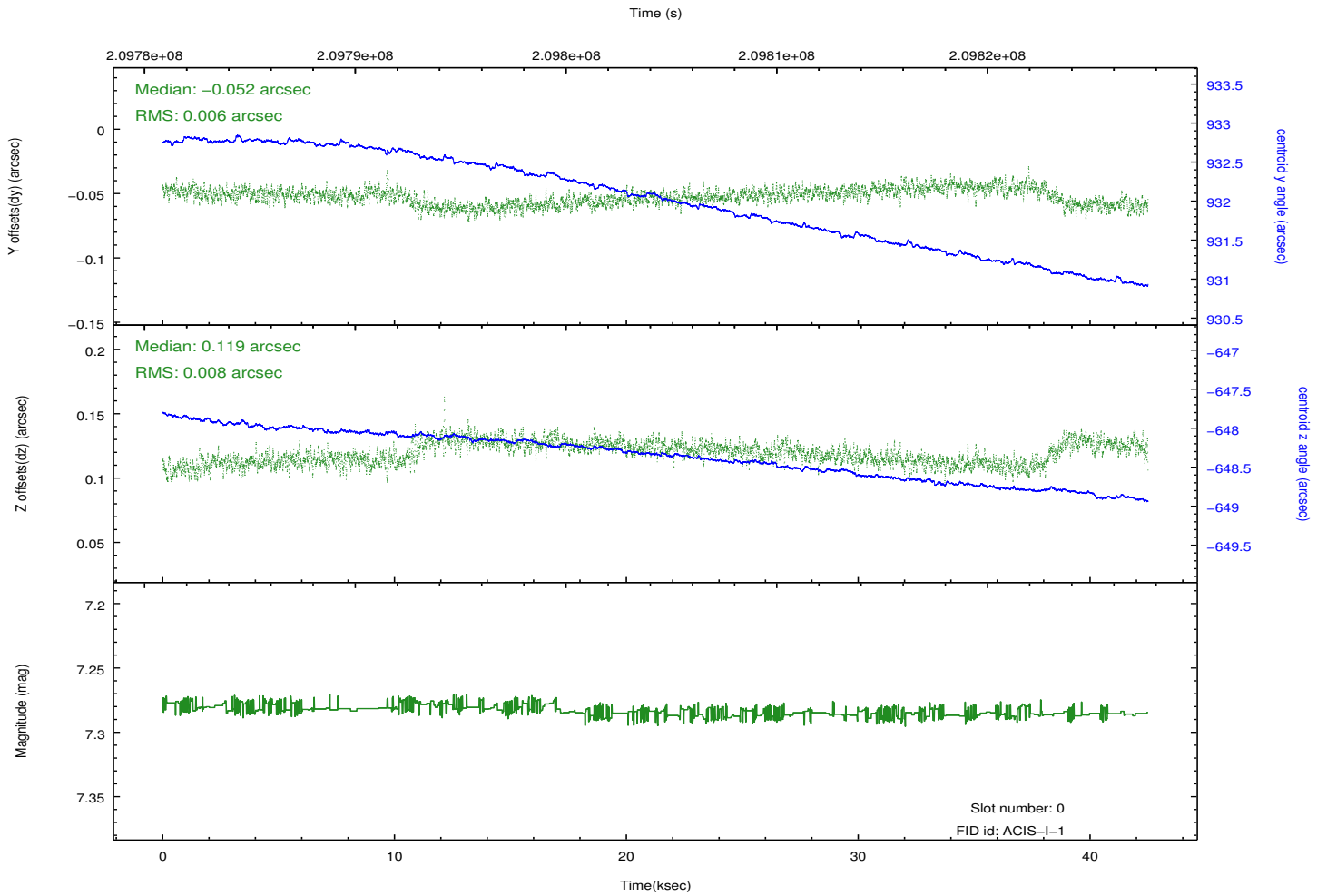
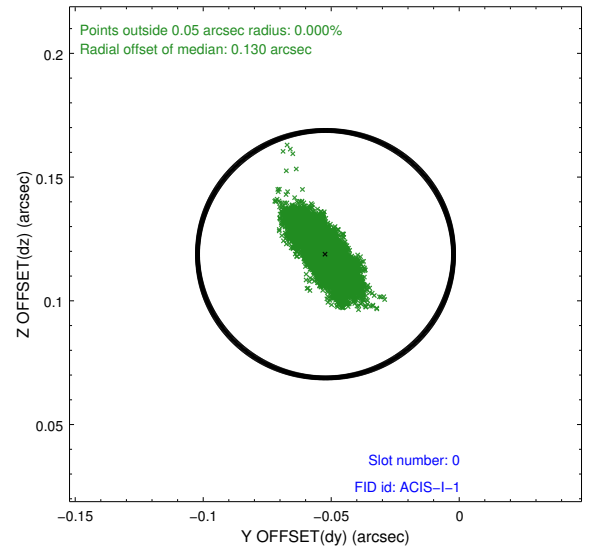
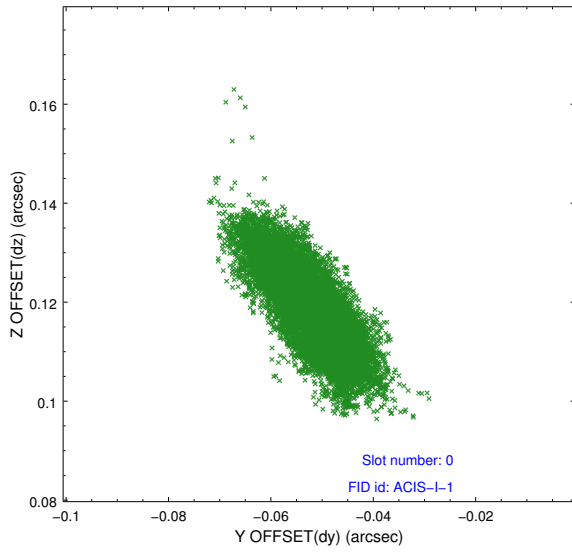


2.4.5 Slot 7

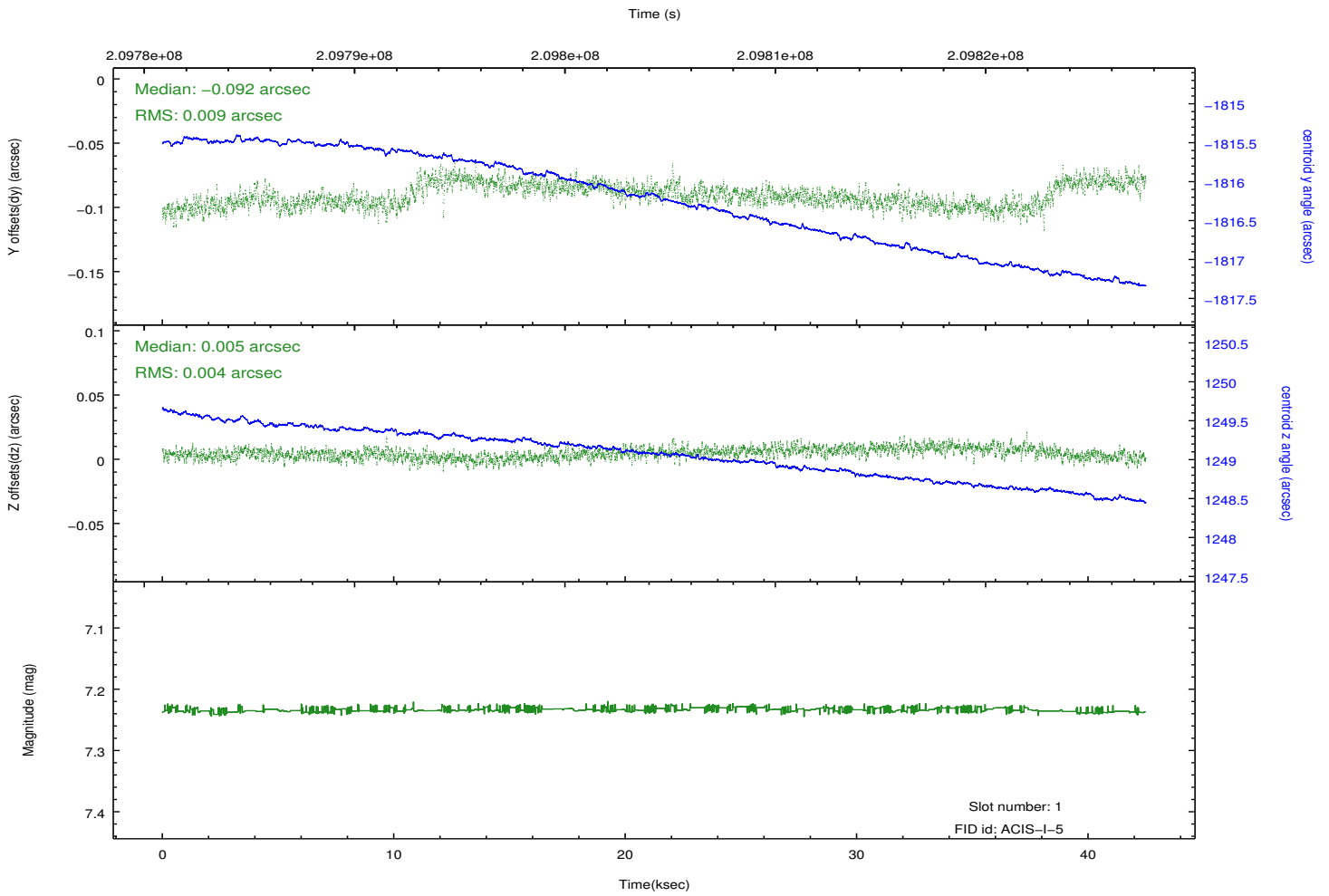
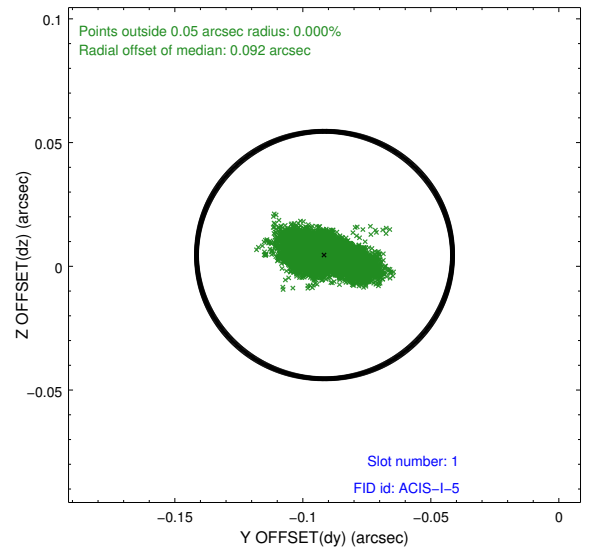
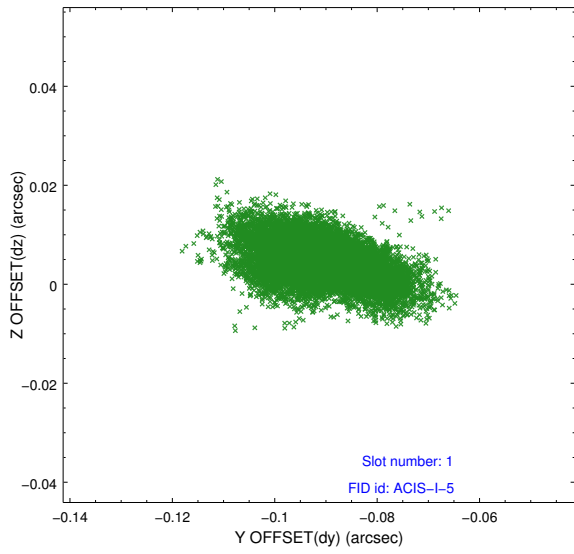


2.5 FID Slots

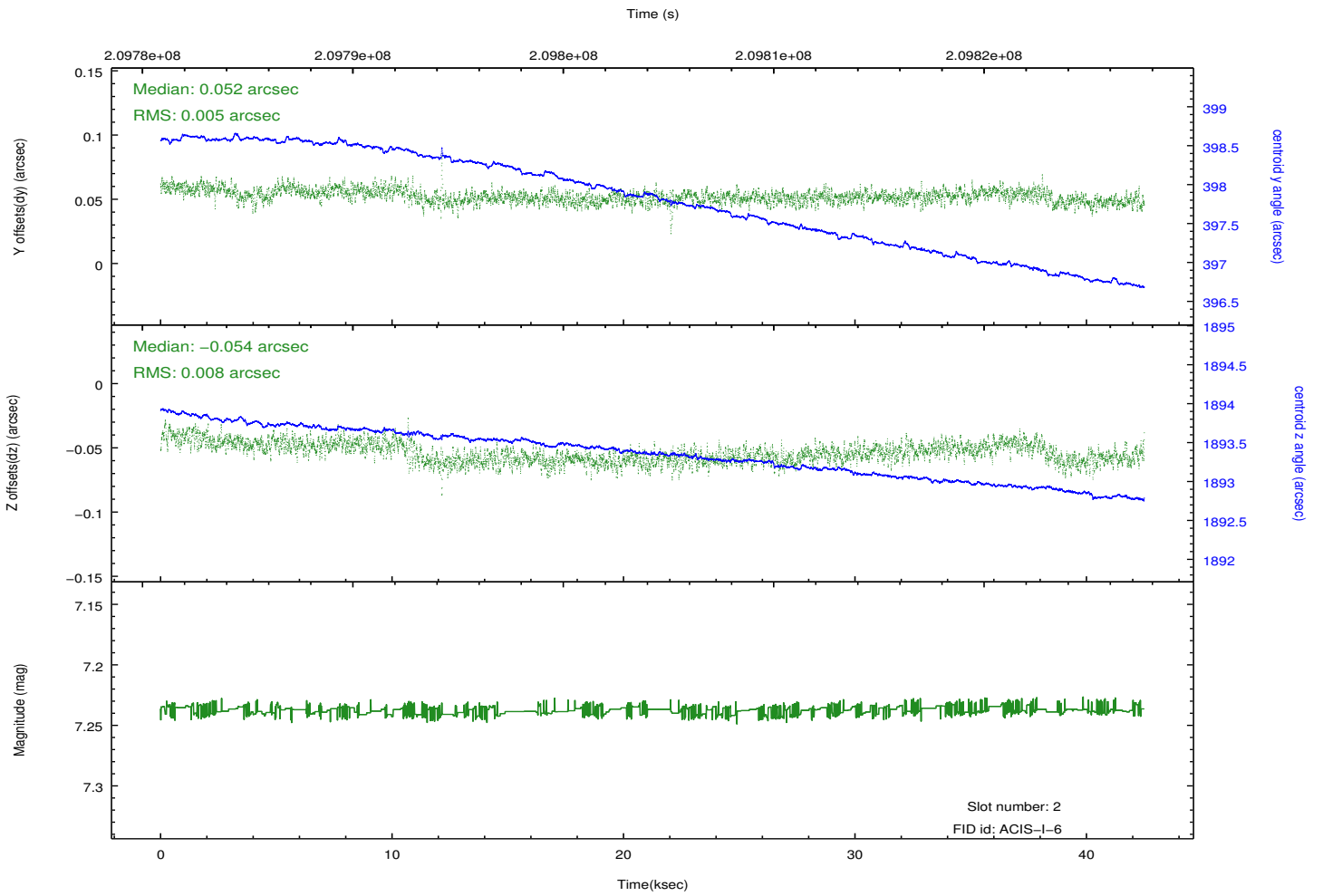
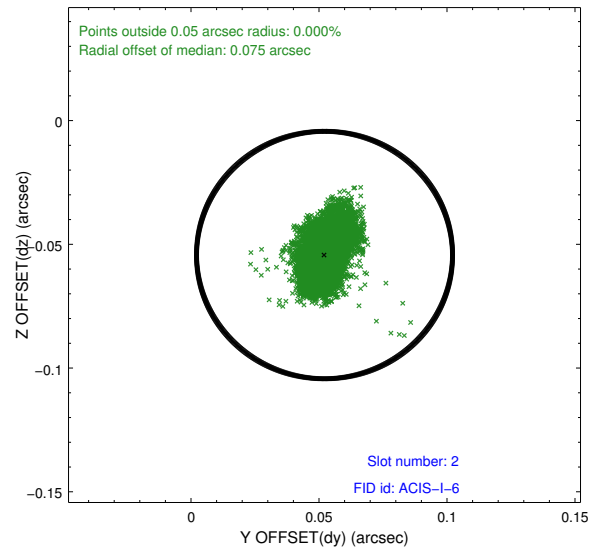
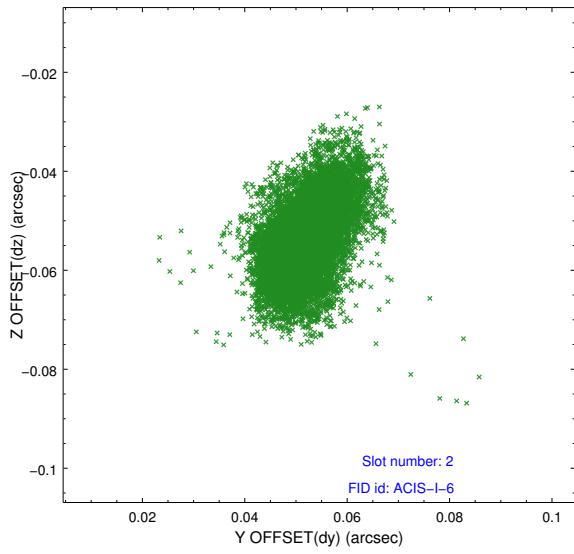
2.5.1 Slot 0



2.5.2 Slot 1



2.5.3 Slot 2



A Summary

A.1 Status

V&V Scientist	Jen Lauer
V&V Date (YYYY-MM-DD)	2012.12.21
V&V Edition	1
V&V Disposition and Status	OK
V&V Charge Time	42.038

A.2 Comments