

V&V Reference Report

L2 ASCDS Version : 8.4.5

Observation 506 - L2 Version 4
Chandra X-Ray Center

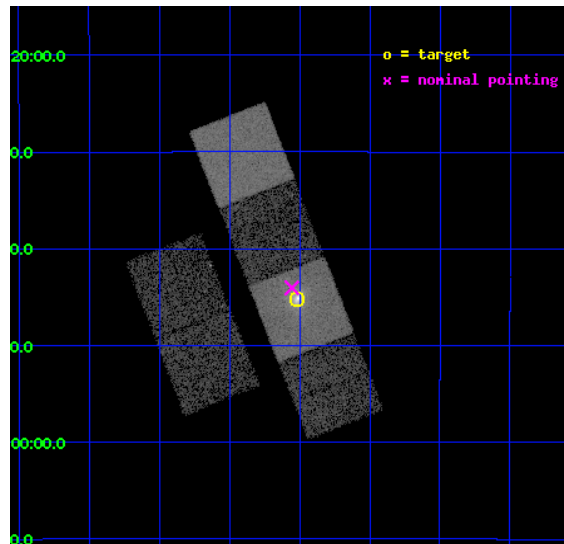
L2 Processing Date : Aug 24 2012

Contents

1	Front	2
2	OBI	3
2.1	OBI	3
2.1.1	Images	3
2.1.2	Bias	3
2.1.3	Parameters	4
2.1.4	Events	4
2.2	Compared Parameters	5
2.3	Aspect	6
2.4	Star Slots	9
2.4.1	Slot 3	9
2.4.2	Slot 4	10
2.4.3	Slot 5	11
2.4.4	Slot 6	12
2.4.5	Slot 7	13
2.5	FID Slots	14
2.5.1	Slot 0	14
2.5.2	Slot 1	15
2.5.3	Slot 2	16
A	Summary	17
A.1	Status	17
A.2	Comments	17

1 Front

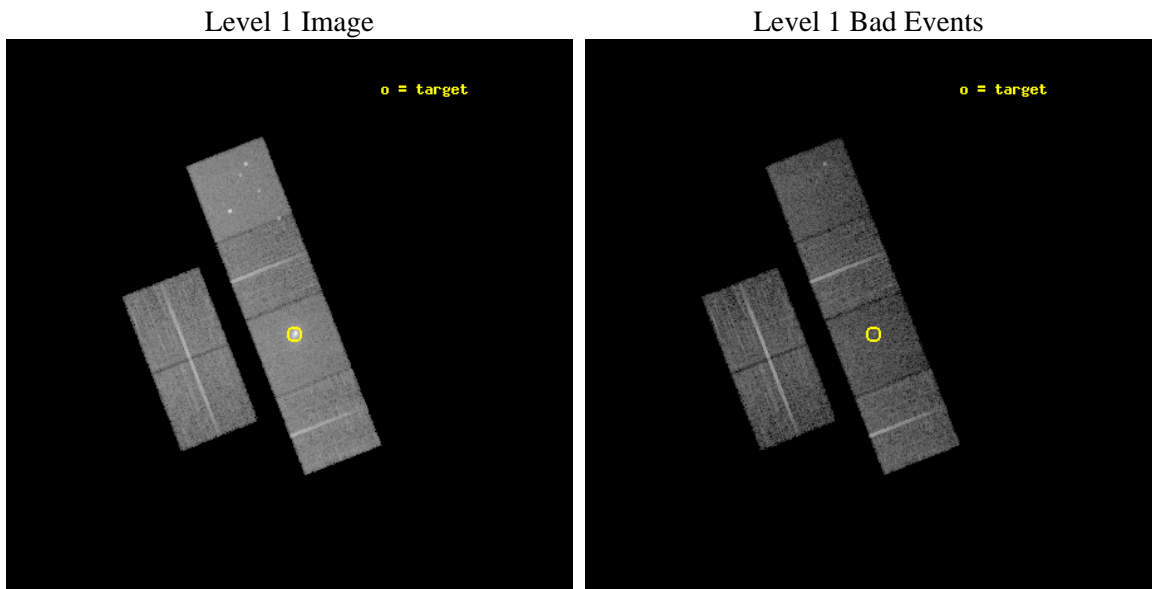
seq_num	800014	Sequence number
obs_id	506	Observation id
title	THE MASSIVE COOLING FLOW IN RXJ1347-114	Proposal title
observer	Professor Andrew Fabian	Principal investigator
object	RX J1347-114	Source name
dtcycle	0	
cycle	P	events from which exps? Prim/Second/Both
ra_targ	206.879167	Observer's specified target RA [deg]
dec_targ	-11.753056	Observer's specified target Dec [deg]
ra_nom	206.88879010719	Nominal RA [deg]
dec_nom	-11.73408423845	Nominal Dec [deg]
roll_nom	68.659246506647	Nominal Roll [deg]
revision	4	Processing version of data
ontime	9049.3310272992	Sum of GTIs [s]
livetime	8934.7429489785	Livetime [s]
ontime2	9049.3720673025	Sum of GTIs [s]
ontime3	9049.2079073042	Sum of GTIs [s]
ontime5	9049.2899872959	Sum of GTIs [s]
ontime6	9049.2489473075	Sum of GTIs [s]
ontime7	9049.3310272992	Sum of GTIs [s]
ontime8	9049.1668673009	Sum of GTIs [s]
l2events	112909	Number of level 2 events



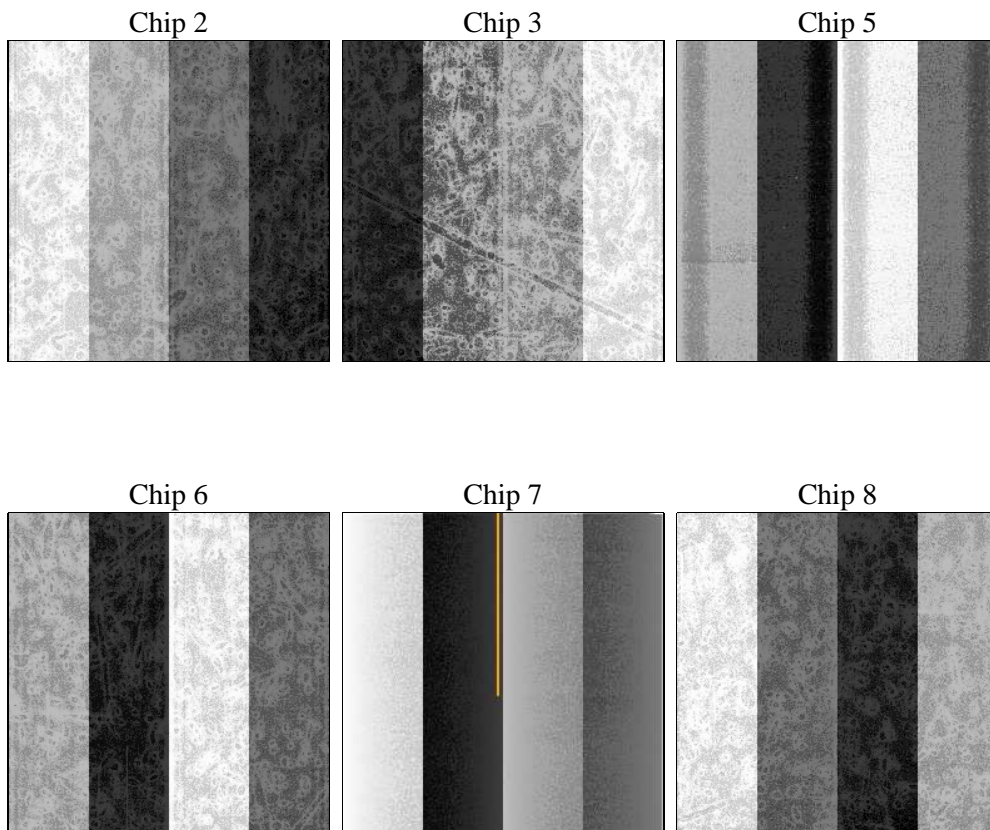
2 OBI

2.1 OBI

2.1.1 Images



2.1.2 Bias



2.1.3 Parameters

obi_num	0	Obi number	sched_exp_time	10000.000000	[s] Scheduled observation exposure time
ascdsver	8.4.5	Processing system revision	ontime	9049.3310272992	Sum of GTIs [s]
caldbver	4.5.1.1	 	ontime2	9049.3720673025	Sum of GTIs [s]
date	2012-08-24T04:26:50	Date and time of file creation	ontime3	9049.2079073042	Sum of GTIs [s]
revision	4	Processing version of data	ontime5	9049.2899872959	Sum of GTIs [s]
			ontime6	9049.2489473075	Sum of GTIs [s]
			ontime7	9049.3310272992	Sum of GTIs [s]
			ontime8	9049.1668673009	Sum of GTIs [s]
			l1events	468787	Number of level 1 events

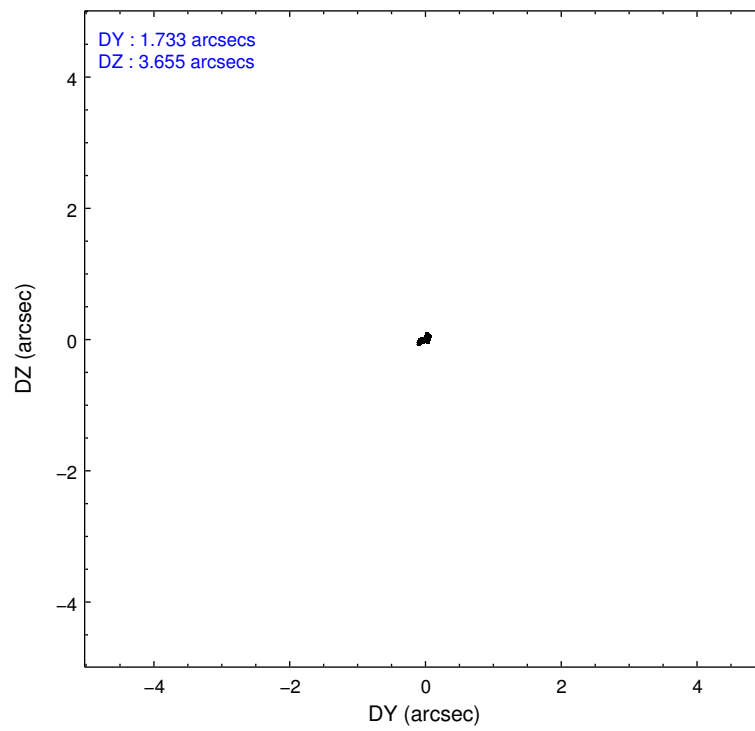
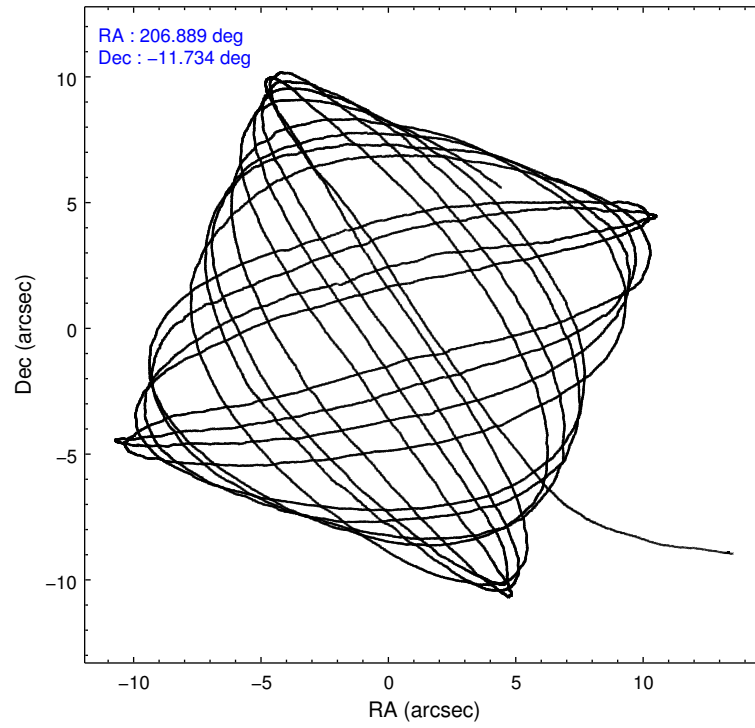
2.1.4 Events

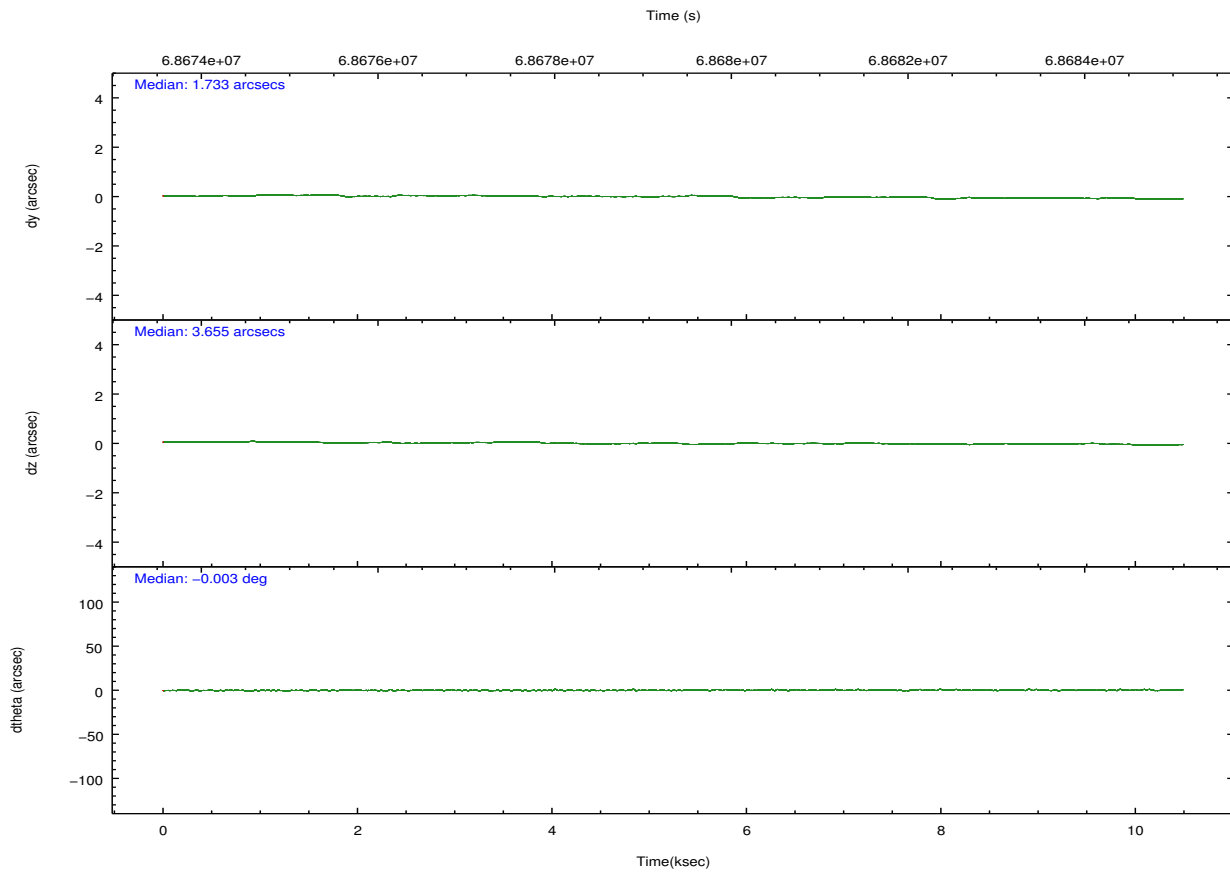
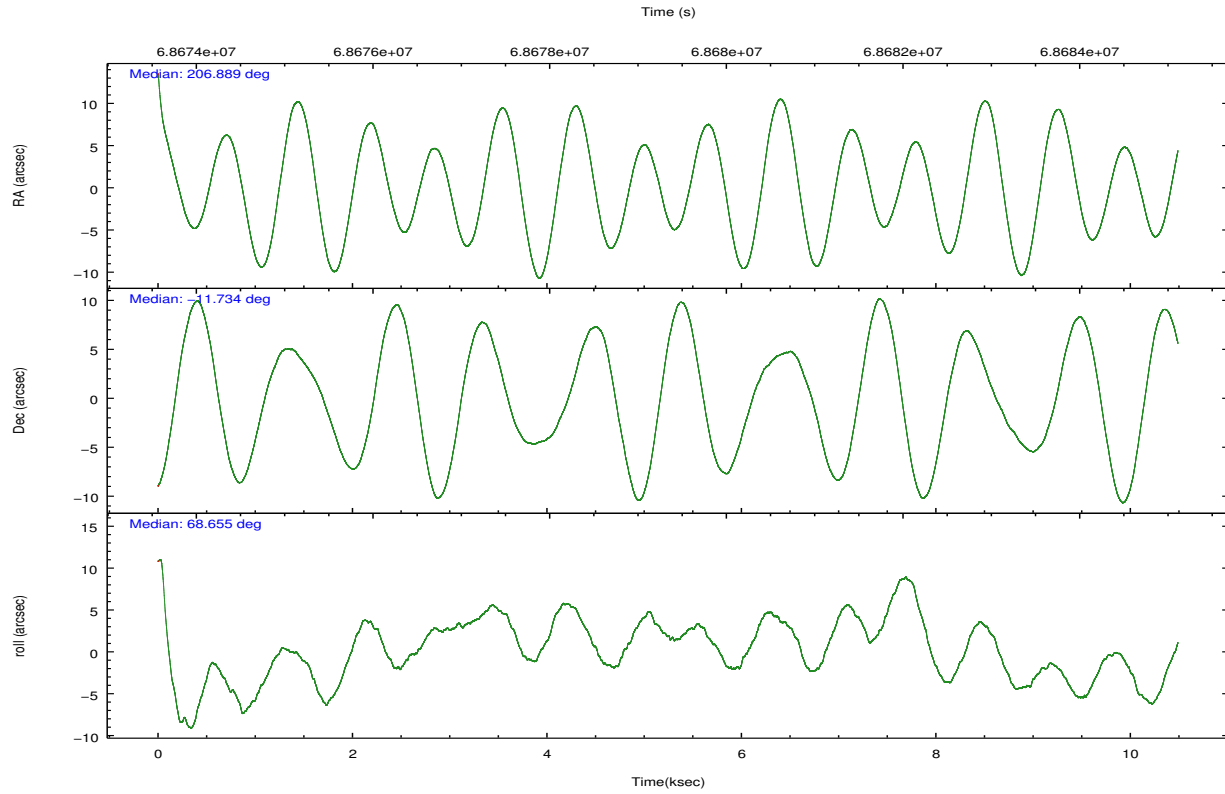
	ccd 2	ccd 3	ccd 5	ccd 6	ccd 7	ccd 8		ccd 2	ccd 3	ccd 5	ccd 6	ccd 7	ccd 8
level 1 events	69079	66376	87828	67401	95391	82712	grade 0 events	2947	3004	6943	3062	9512	4959
rejected events	62239	59569	45412	60161	44129	67201		4%	4%	7%	4%	9%	5%
rejected %	90%	89%	51%	89%	46%	81%	grade 1 events	28	40	409	34	95	55
								0%	0%	0%	0%	0%	0%
							grade 2 events	1430	1308	11470	1416	11368	3350
								2%	1%	13%	2%	11%	4%
							grade 3 events	650	656	1893	754	5109	1617
								0%	0%	2%	1%	5%	1%
							grade 4 events	651	663	1768	698	5136	1542
								0%	0%	2%	1%	5%	1%
							grade 5 events	1937	2074	6660	2485	7523	3039
								2%	3%	7%	3%	7%	3%
							grade 6 events	1166	1179	20360	1316	20160	4047
								1%	1%	23%	1%	21%	4%
							grade 7 events	60270	57452	38325	57636	36488	64103
								87%	86%	43%	85%	38%	77%

2.2 Compared Parameters

Parameter	Planned	Actual	Parameter	Planned	Actual
Instrument	ACIS	ACIS	Obspar format version number	7	7
Detector	ACIS-235678	ACIS-235678	Obspar file type	PREDICTED	ACTUAL
Grating	NONE	NONE	Obspar update status	NONE	UPDATED
Data mode	VFAINT	VFAINT	Number of optional ACIS chips dropped	0	0
Observation mode	POINTING	POINTING	On-chip summing requested	N	N
[deg] Pointing RA	206.893061	206.8887901071893	Subarray requested	NONE	NONE
[deg] Pointing Dec	-11.761281	-11.73408423845049	Alternating exposures requested	N	N
[deg] Pointing Roll	68.503485	68.65924650664704	[s] Primary exposure time	0.000000	3.2
[s] Window start time (MET)	63072064.184000	63072064.184000			
[s] Window stop time (MET)	84153664.184000	84153664.184000			
[mm] SIM focus pos	-0.684267	-0.6828225247311905			
[mm] SIM defocus	0	0.001444936568705701			
[mm] SIM translation stage pos	-190.132523	-190.1400660498719			
[mm] SIM translation stage offset	0	0.00754346686406393			
[s] Observation start time (MET)	68674585.184000	68673258.780655			
Observation start date	2000-03-05T20:15:21	2000-03-05T19:54:18			
[s] Observation end time (MET)	68684585.184000	68685551.606104			
Observation end date	2000-03-05T23:02:01	2000-03-05T23:19:11			
Read mode	TIMED	TIMED			

2.3 Aspect





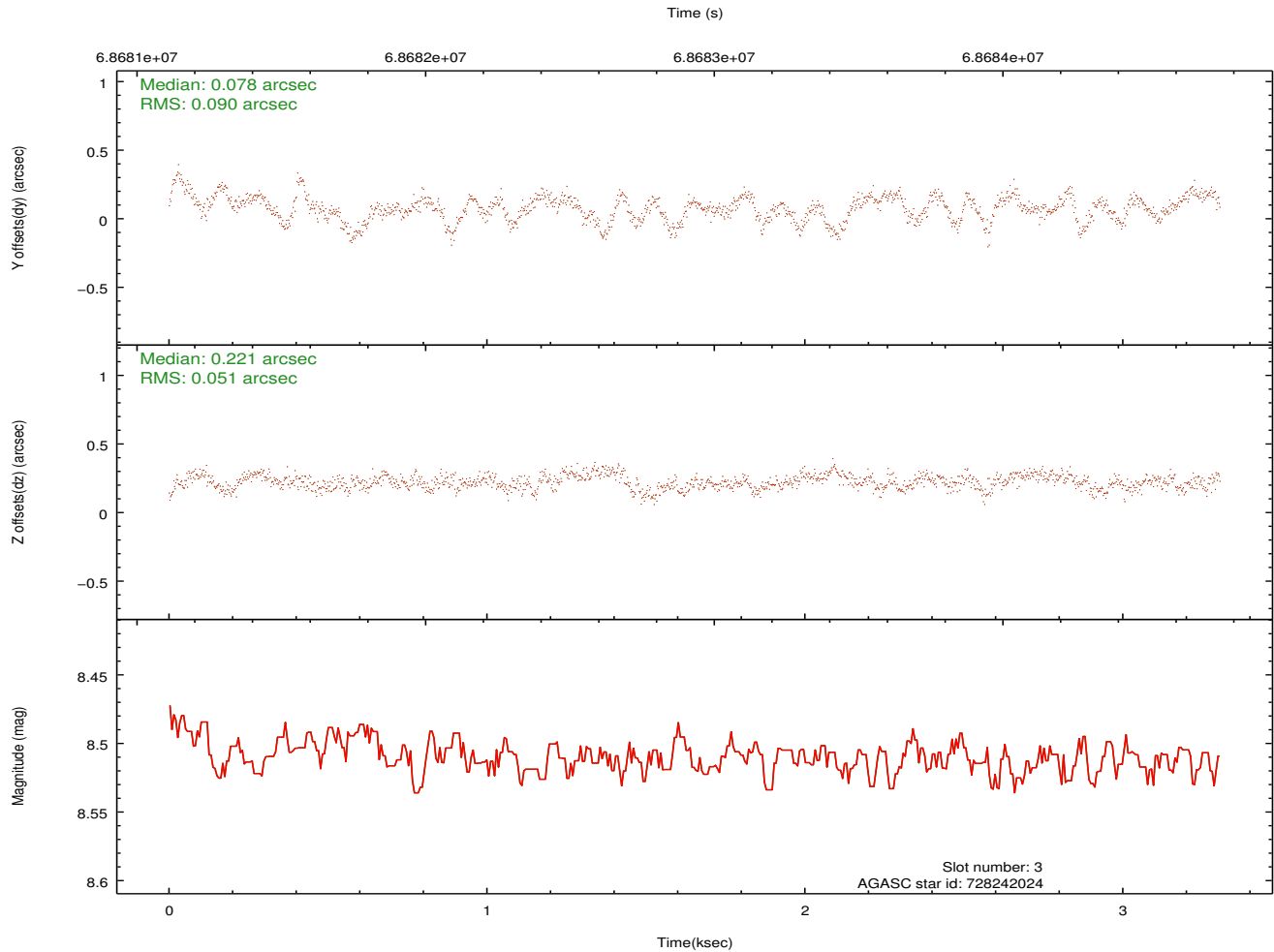
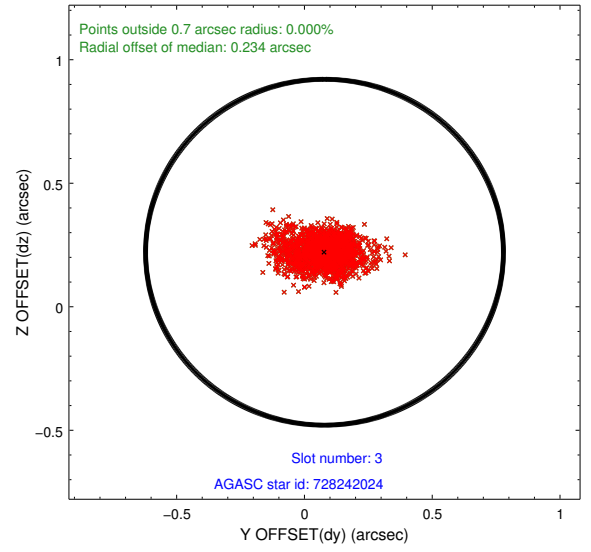
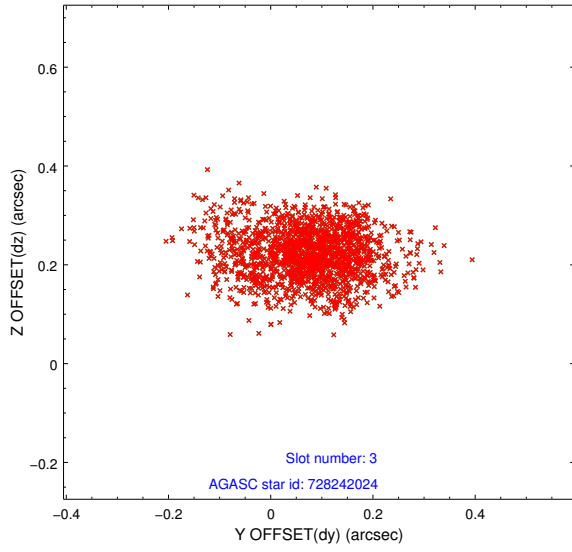
Slot Statistics

slot	status	id	mag	n_pts	med_dy	med_dz	dr1	dr2	ra	dec	mean_y	mean_z
0	FID	ACIS-S-2	7.11	2559	-0.005	-0.021	0.007	0.011	0.000000	0.000000	-754.37	-1724.74
1	FID	ACIS-S-4	7.21	2559	0.000	0.008	0.005	0.010	0.000000	0.000000	2158.73	183.20
2	FID	ACIS-S-5	7.24	2558	-0.026	0.022	0.007	0.011	0.000000	0.000000	-1806.55	177.54
3	BAD	728242024	8.51	1613	0.078	0.221	0.107	0.193	207.746757	-11.418672	2247.13	-2352.91
4	GUIDE	728245744	8.66	5116	-0.097	-0.054	0.059	0.097	206.959040	-11.284446	1682.74	411.64
5	GUIDE	727327544	9.57	5112	-0.121	-0.039	0.118	0.187	206.398747	-11.483258	290.79	1988.62
6	GUIDE	727321472	9.85	5114	0.042	-0.029	0.104	0.168	206.729745	-11.411859	959.01	997.29
7	GUIDE	728236632	9.66	5111	0.173	0.120	0.089	0.145	206.842205	-12.122561	-1275.46	-310.11

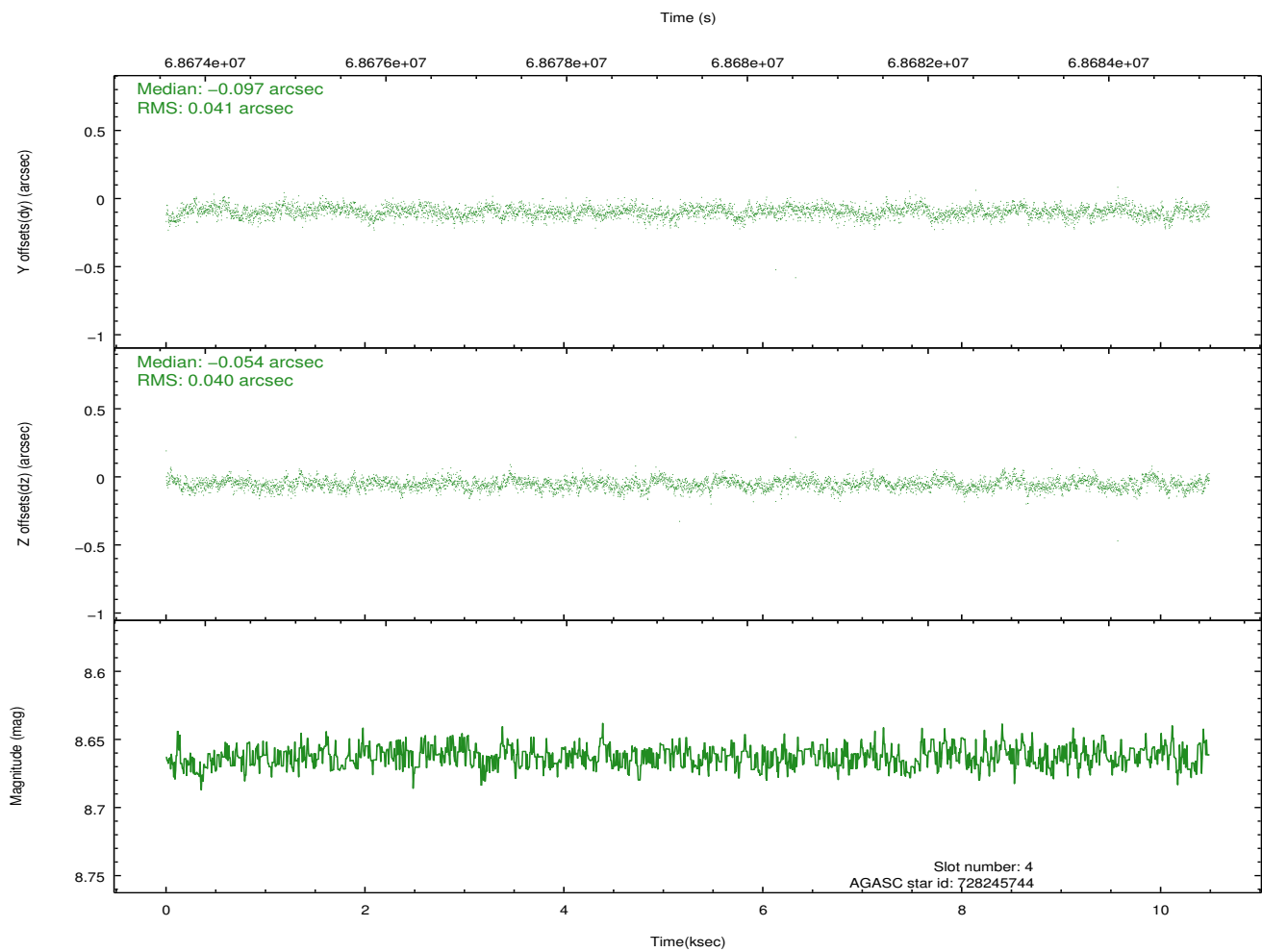
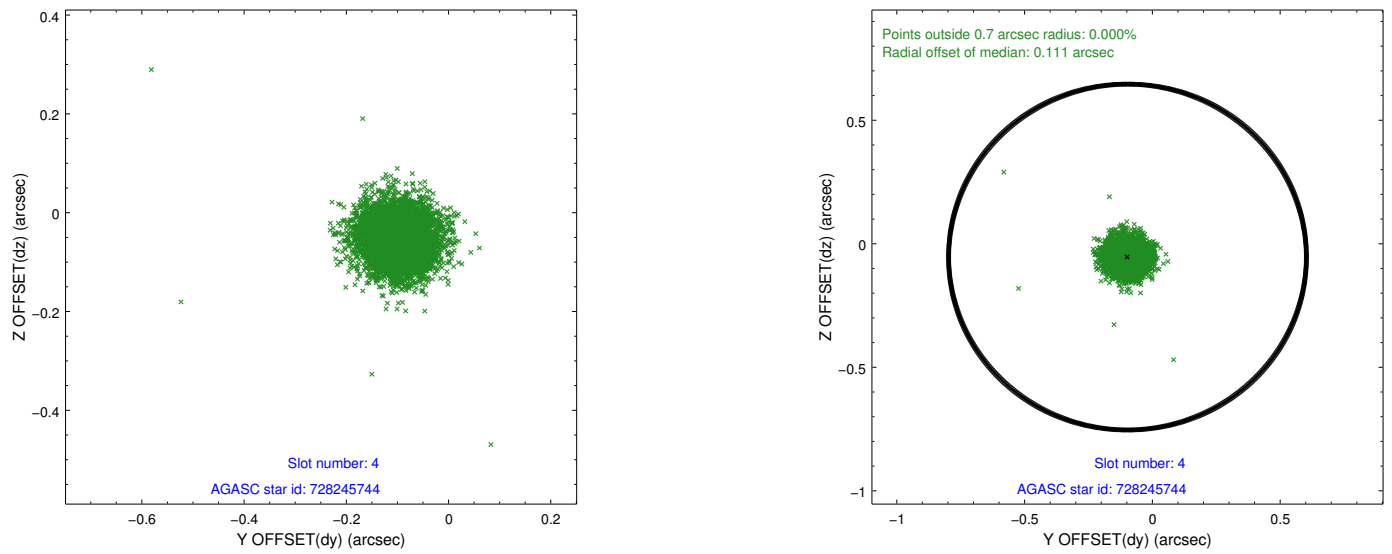
∞

2.4 Star Slots

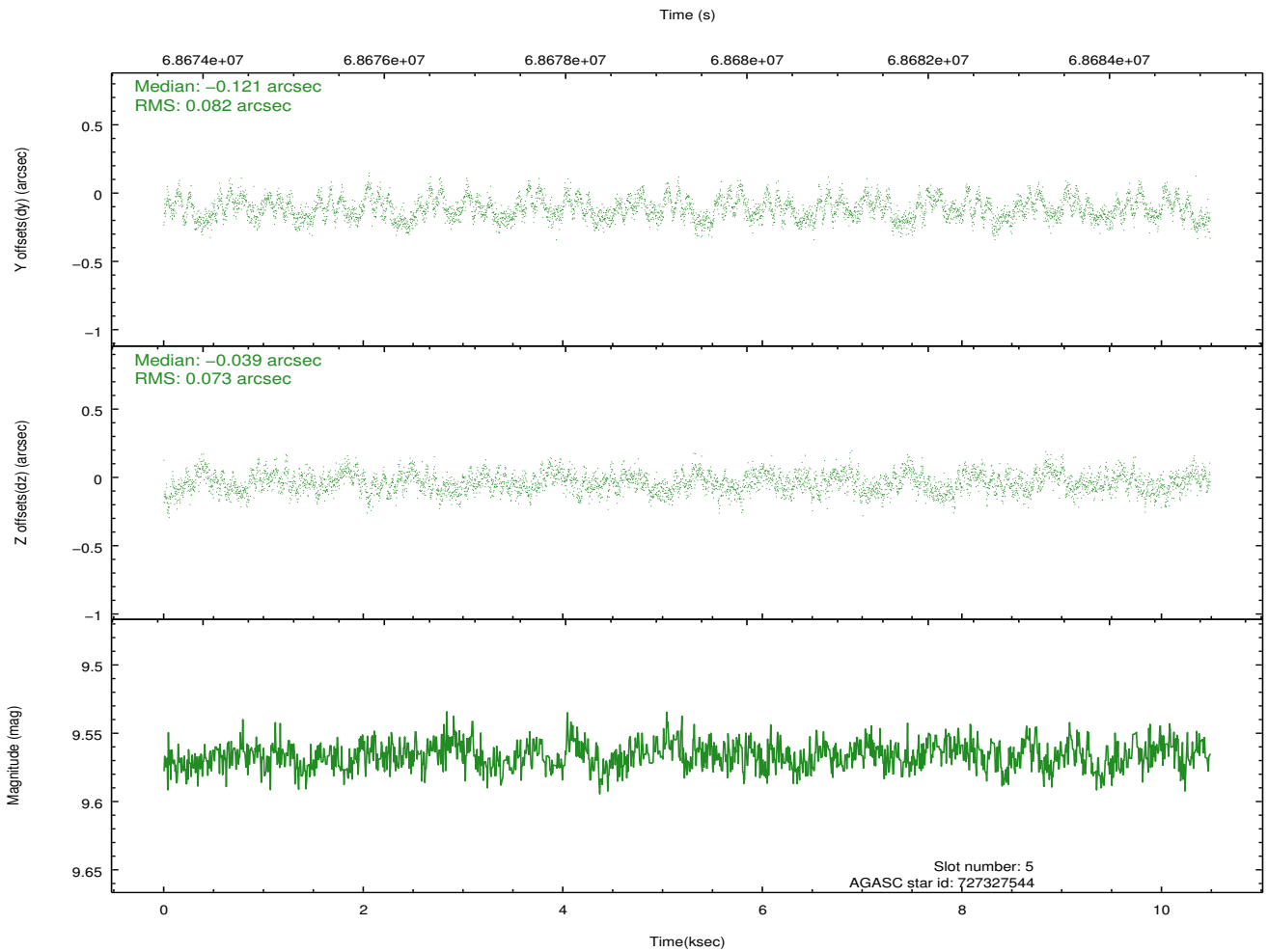
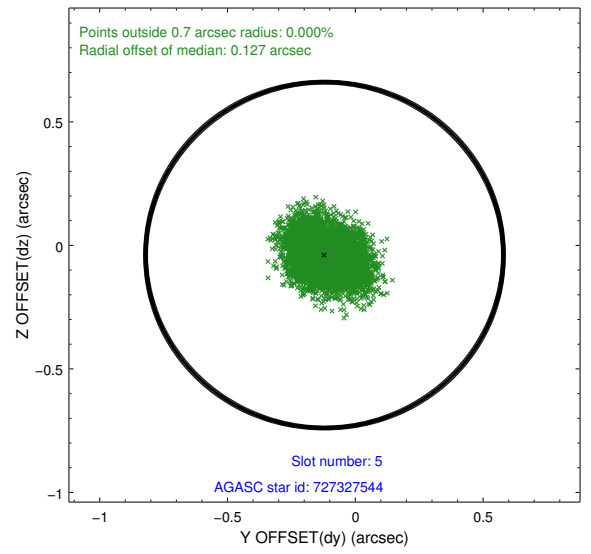
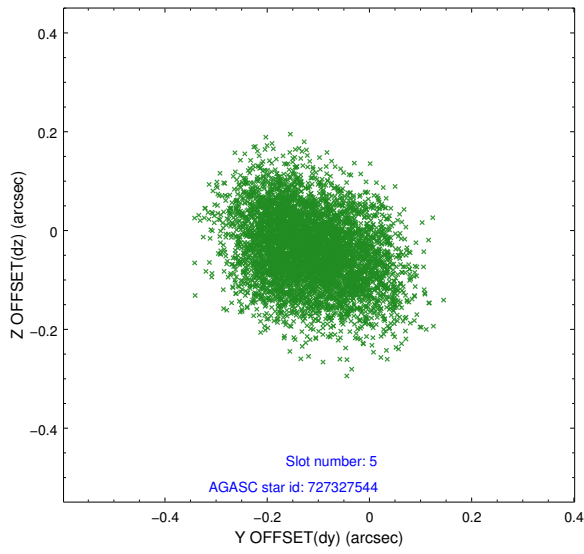
2.4.1 Slot 3



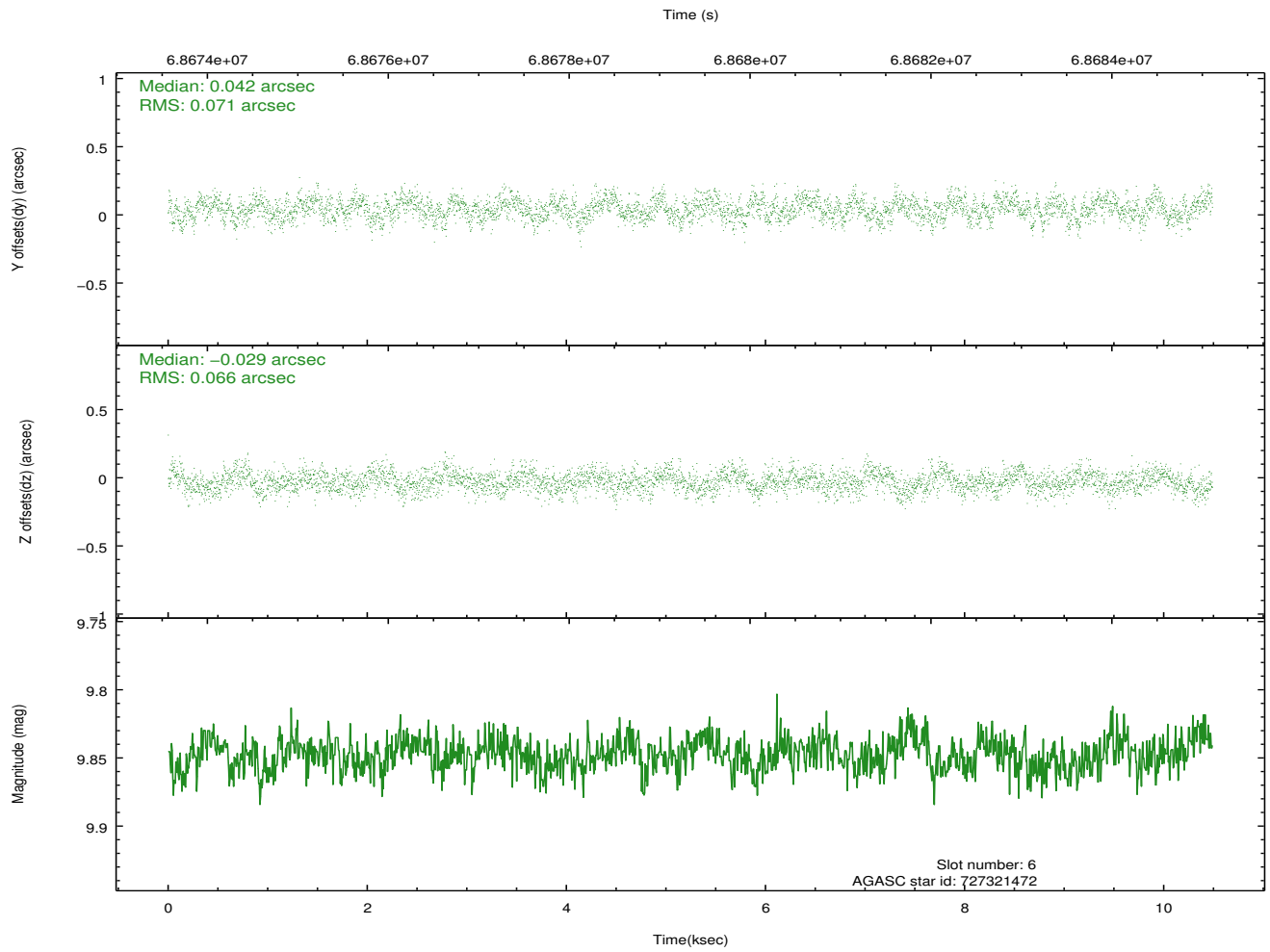
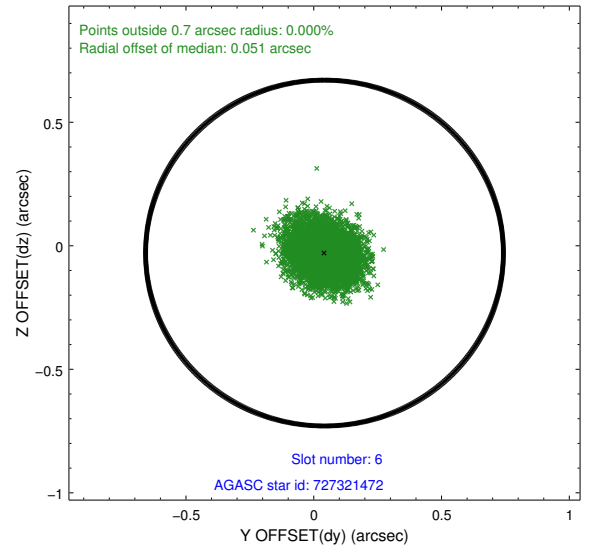
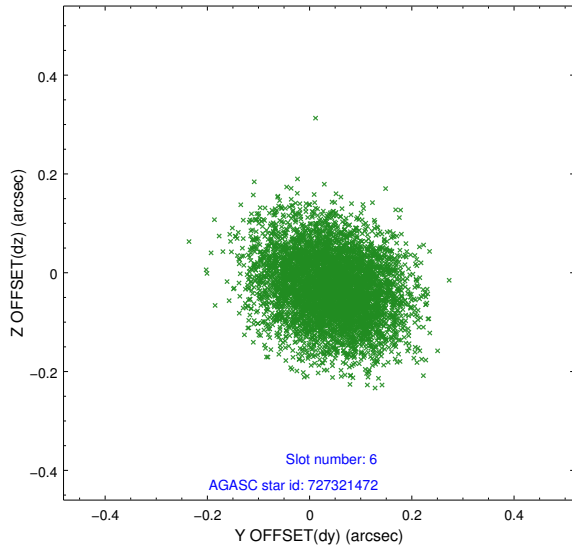
2.4.2 Slot 4



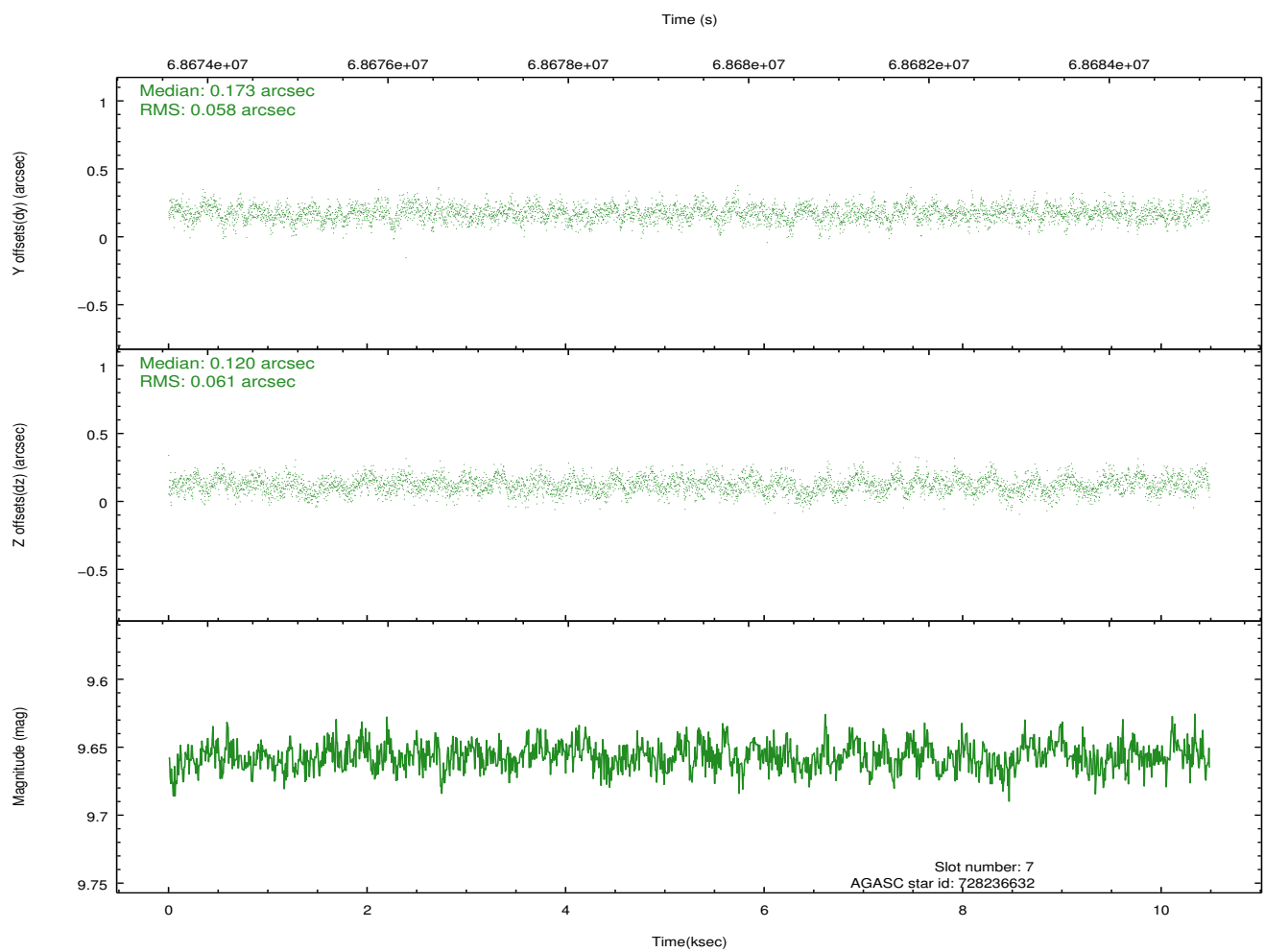
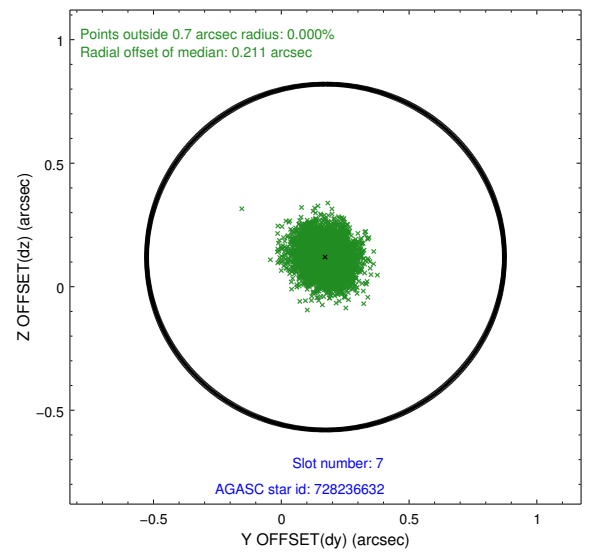
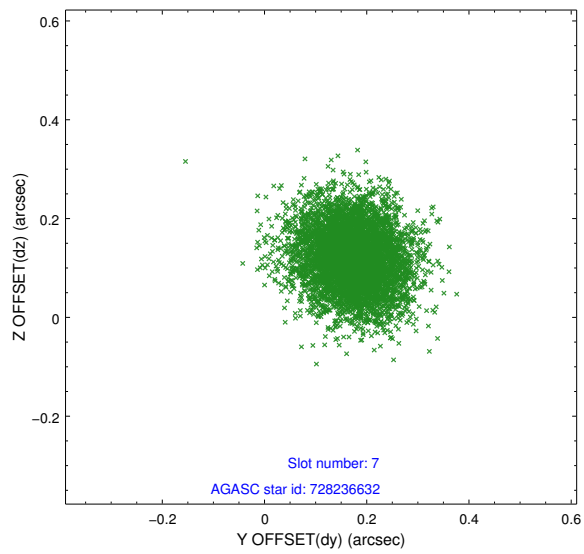
2.4.3 Slot 5



2.4.4 Slot 6

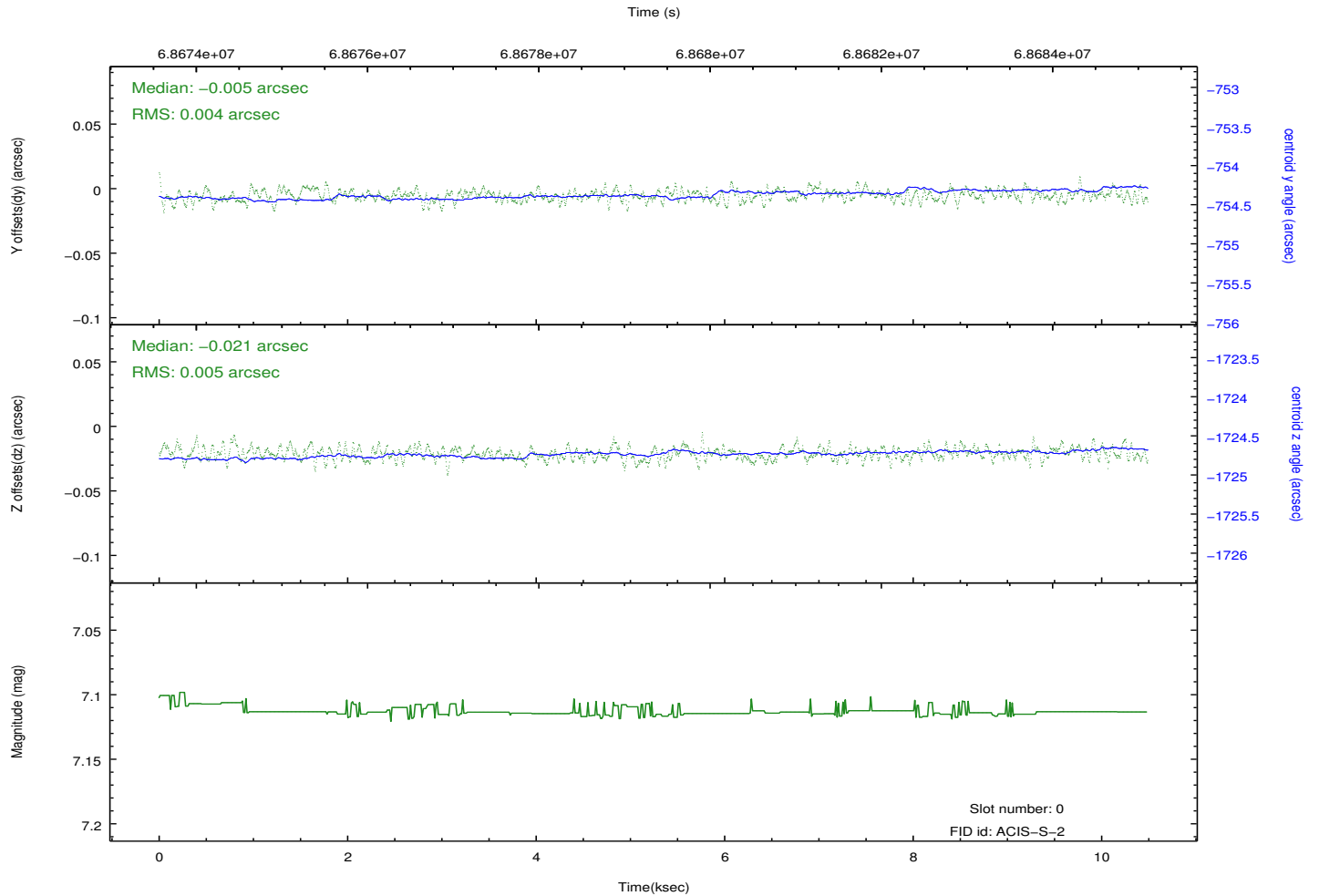
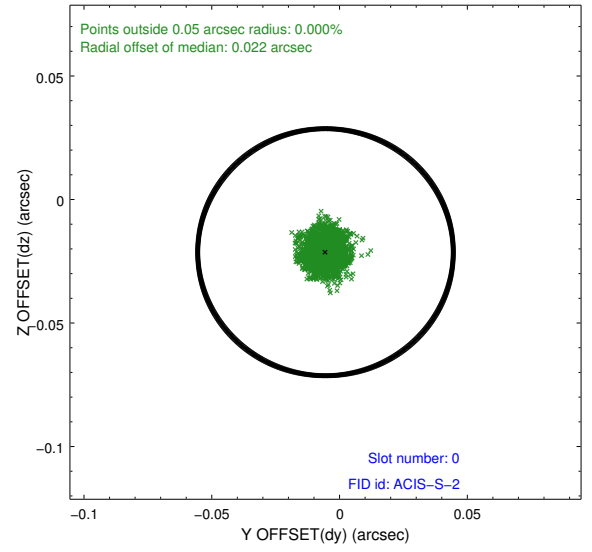
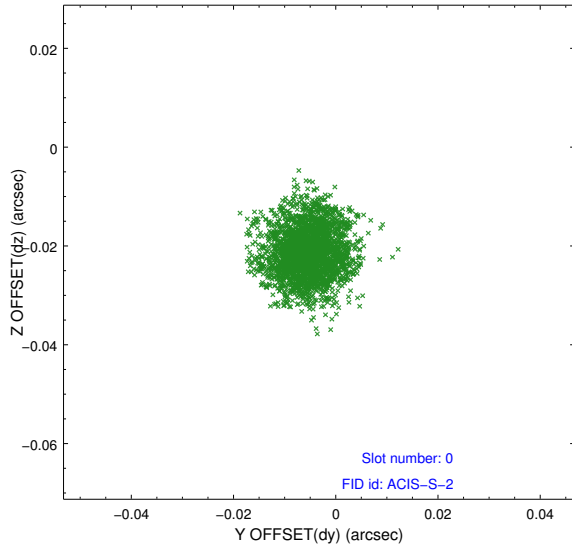


2.4.5 Slot 7

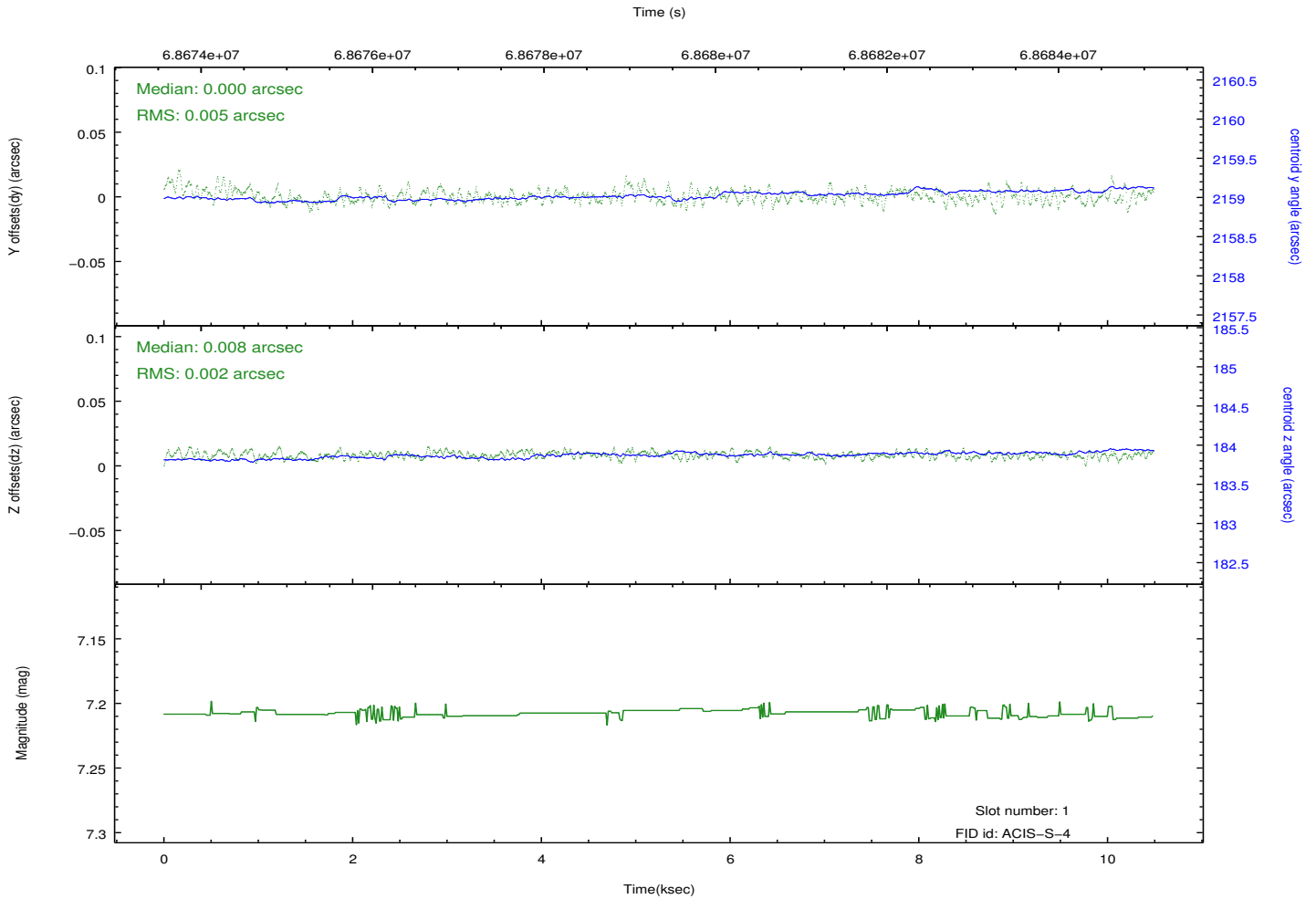
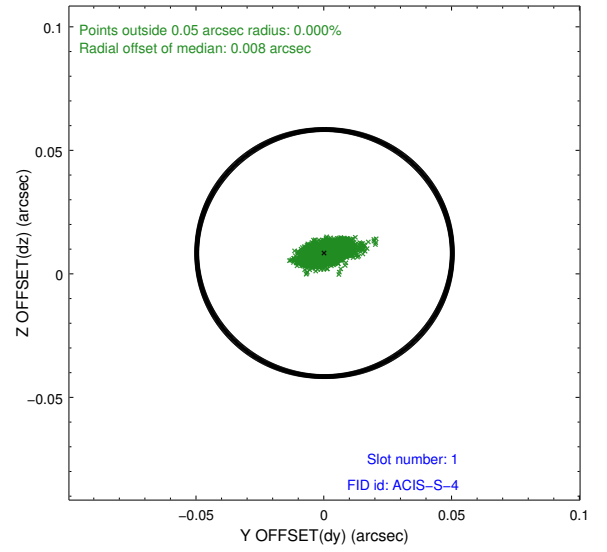
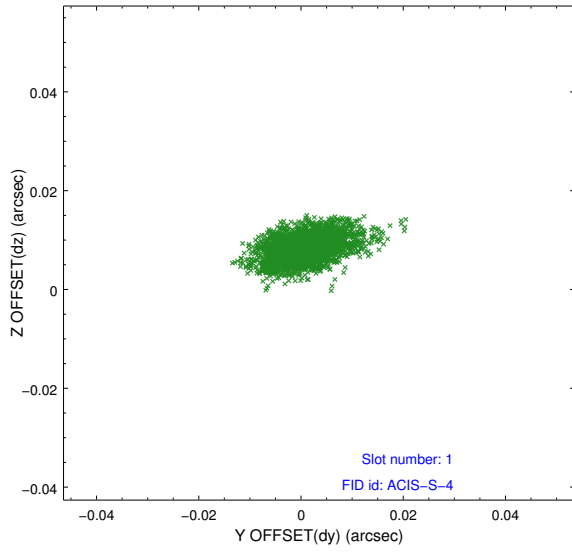


2.5 FID Slots

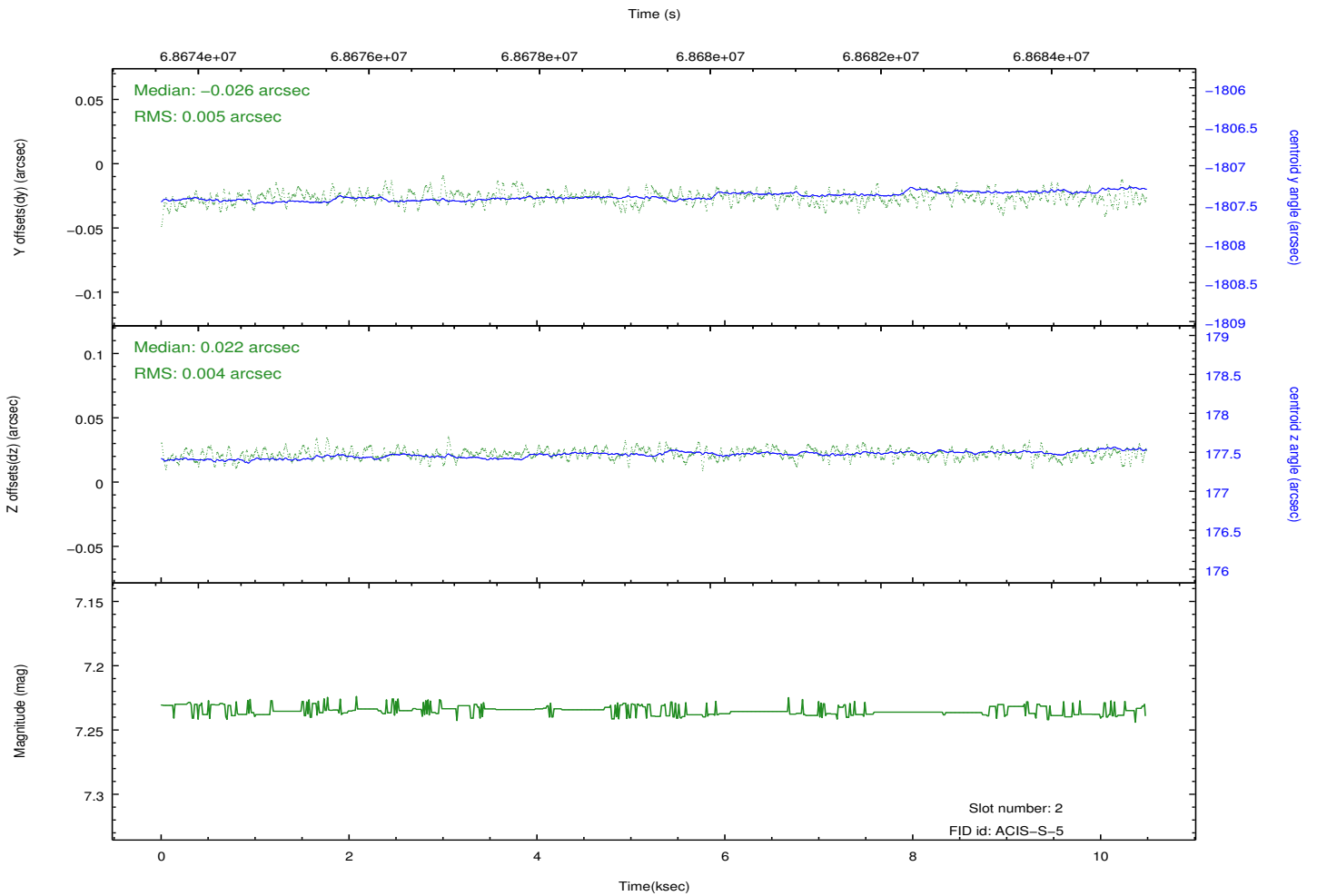
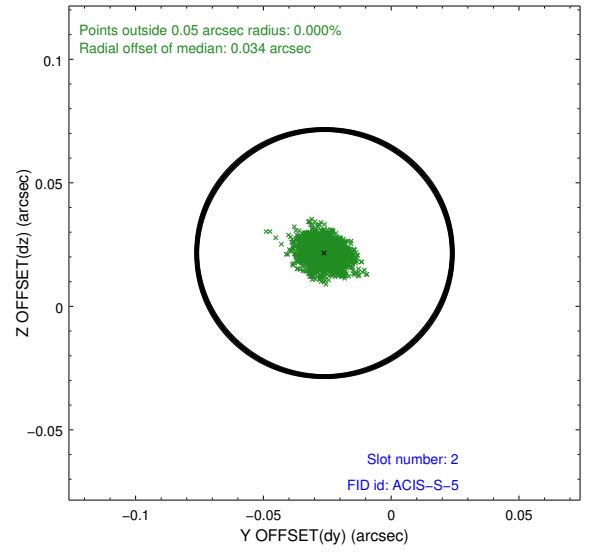
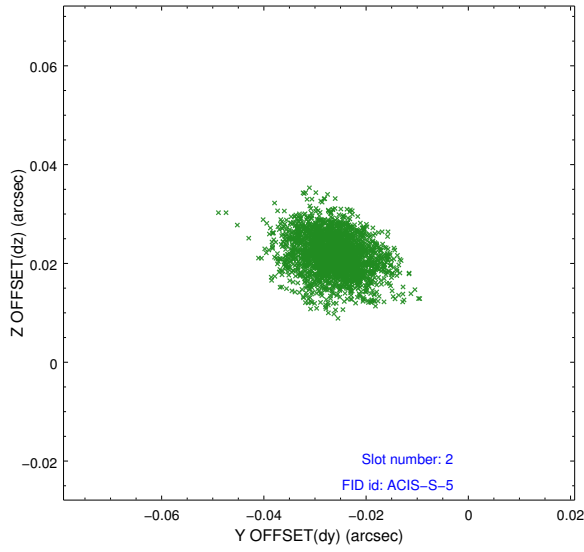
2.5.1 Slot 0



2.5.2 Slot 1



2.5.3 Slot 2



A Summary

A.1 Status

V&V Scientist	Jen Lauer
V&V Date (YYYY-MM-DD)	2012.08.24
V&V Edition	1
V&V Disposition and Status	OK
V&V Charge Time	9.046

A.2 Comments

Window constraint met. Slot 3 was only tracked for 31.5% of the observation and is therefore not included in the aspect solution. The aspect solution is not expected to be degraded by the lack of this one guide star.