

V&V Reference Report

L2 ASCDS Version : 8.4.5

Observation 5196 - L2 Version 3
Chandra X-Ray Center

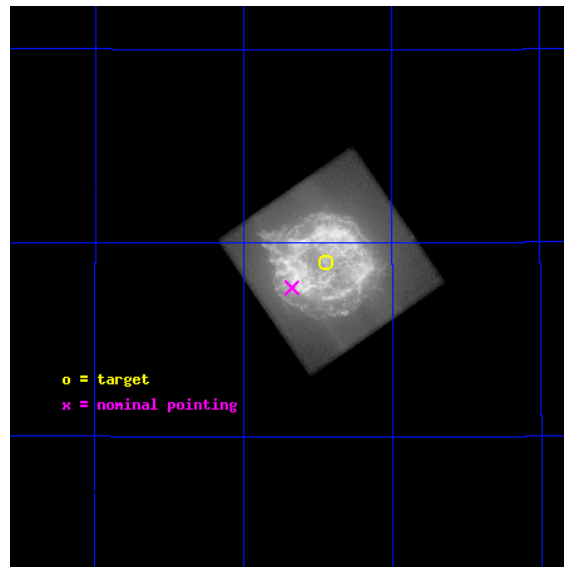
L2 Processing Date : Nov 12 2012

Contents

1	Front	2
2	OBI	3
2.1	OBI	3
2.1.1	Images	3
2.1.2	Parameters	4
2.1.3	Events	4
2.2	Compared Parameters	5
2.3	Aspect	6
2.4	Star Slots	9
2.4.1	Slot 3	9
2.4.2	Slot 4	10
2.4.3	Slot 5	11
2.4.4	Slot 6	12
2.4.5	Slot 7	13
2.5	FID Slots	14
2.5.1	Slot 0	14
2.5.2	Slot 1	15
2.5.3	Slot 2	16
A	Summary	17
A.1	Status	17
A.2	Comments	17

1 Front

seq_num	500459	Sequence number
obs_id	5196	Observation id
title	The Cassiopeia A Explosion: Getting at the Core Issues	Proposal ti
observer	Dr Una Hwang	Principal investigator
object	Cassiopeia A	Source name
dtycycle	0	
cycle	P	events from which exps? Prim/Second/Both
ra_targ	350.86125	Observer's specified target RA [deg]
dec_targ	58.8175	Observer's specified target Dec [deg]
ra_nom	350.91879759426	Nominal RA [deg]
dec_nom	58.794897371829	Nominal Dec [deg]
roll_nom	325.50740667656	Nominal Roll [deg]
revision	3	Processing version of data
ontime	50156.717832744	Sum of GTIs [s]
livetime	49521.603270796	Livetime [s]
ontime7	50156.717832744	Sum of GTIs [s]
l2events	14921105	Number of level 2 events

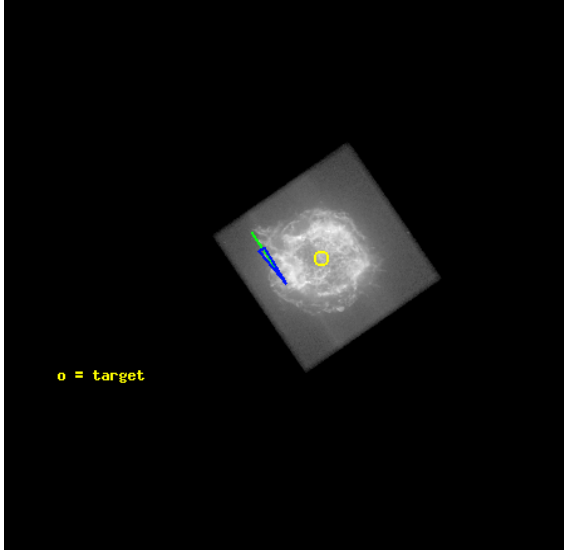


2 OBI

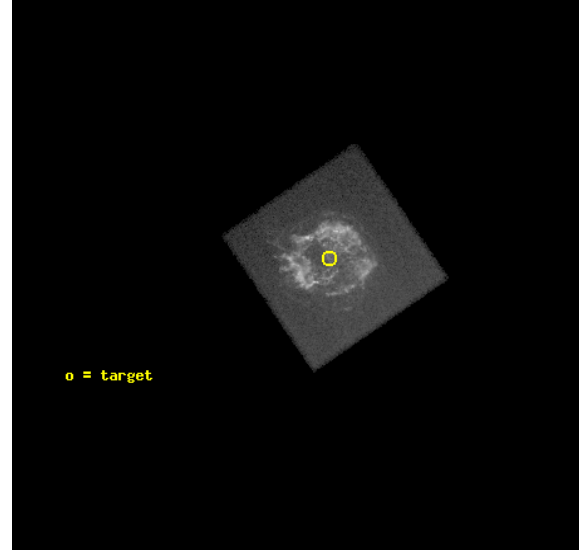
2.1 OBI

2.1.1 Images

Level 1 Image



Level 1 Bad Events



2.1.2 Parameters

obi_num	0	Obi number	sched_exp_time	50000.000000	[s] Scheduled observation exposure time
ascdsver	8.4.5	Processing system revision	ontime	50156.717832744	Sum of GTIs [s]
caldbver	4.5.2	 	ontime7	50156.717832744	Sum of GTIs [s]
date	2012-11-11T23:33:20	Date and time of file creation	l1events	15980470	Number of level 1 events
revision	3	Processing version of data			

2.1.3 Events

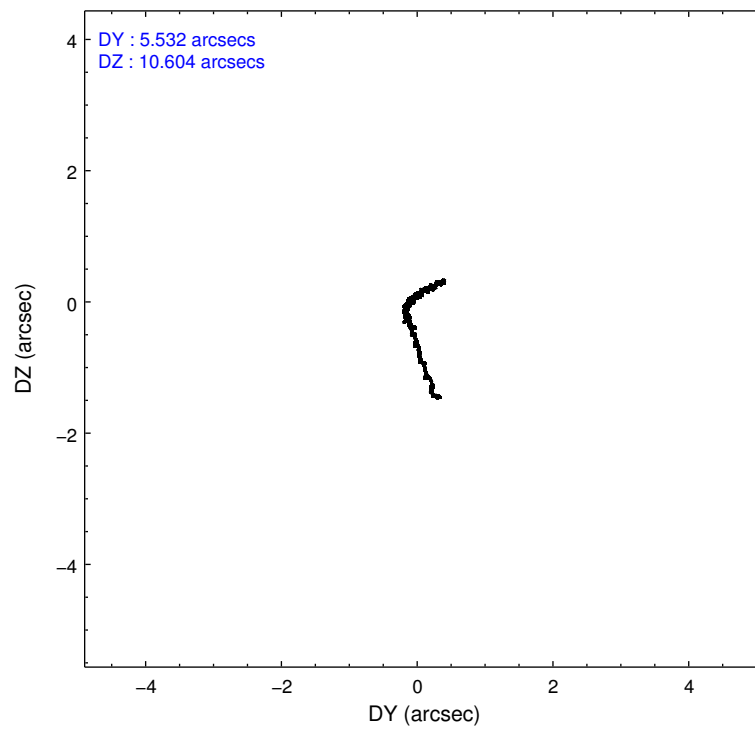
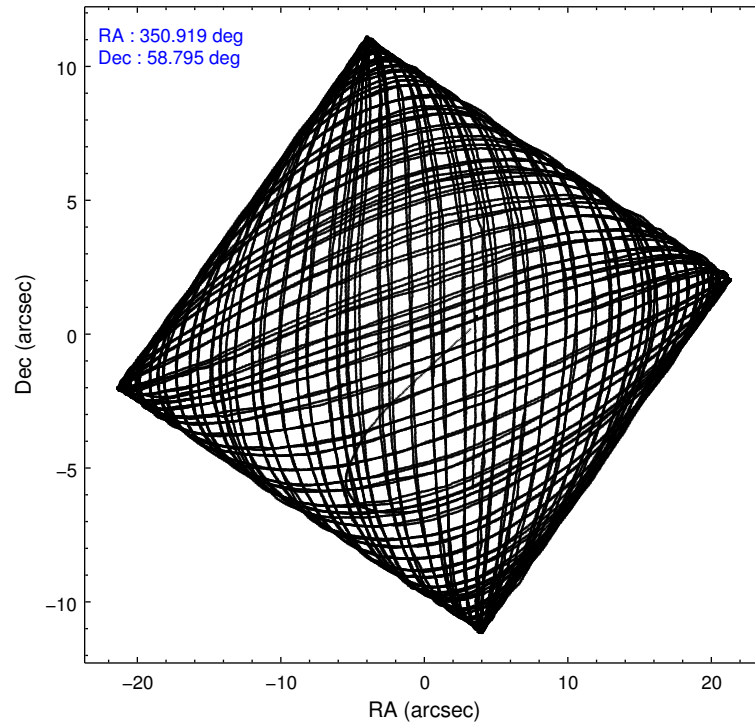
	ccd 7
level 1 events	15980470
rejected events	900677
rejected %	5%

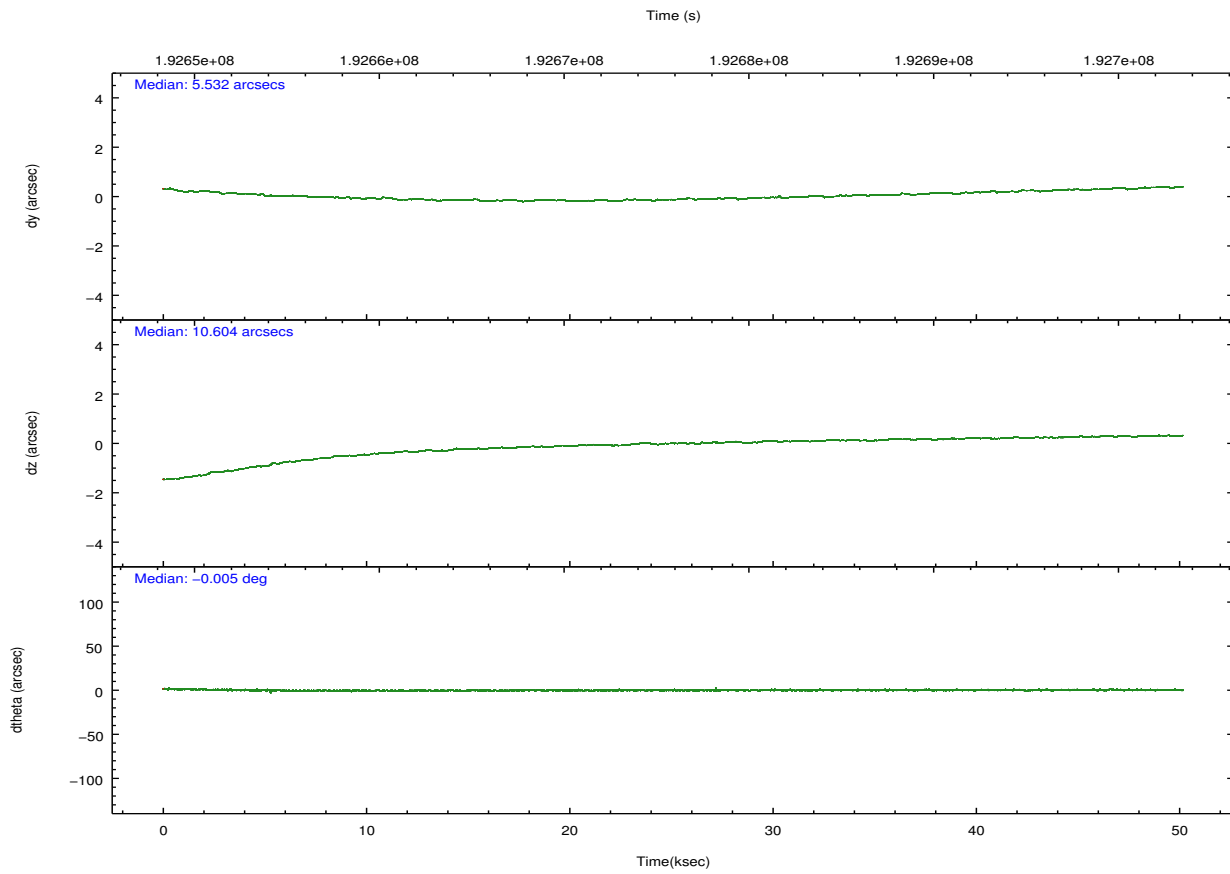
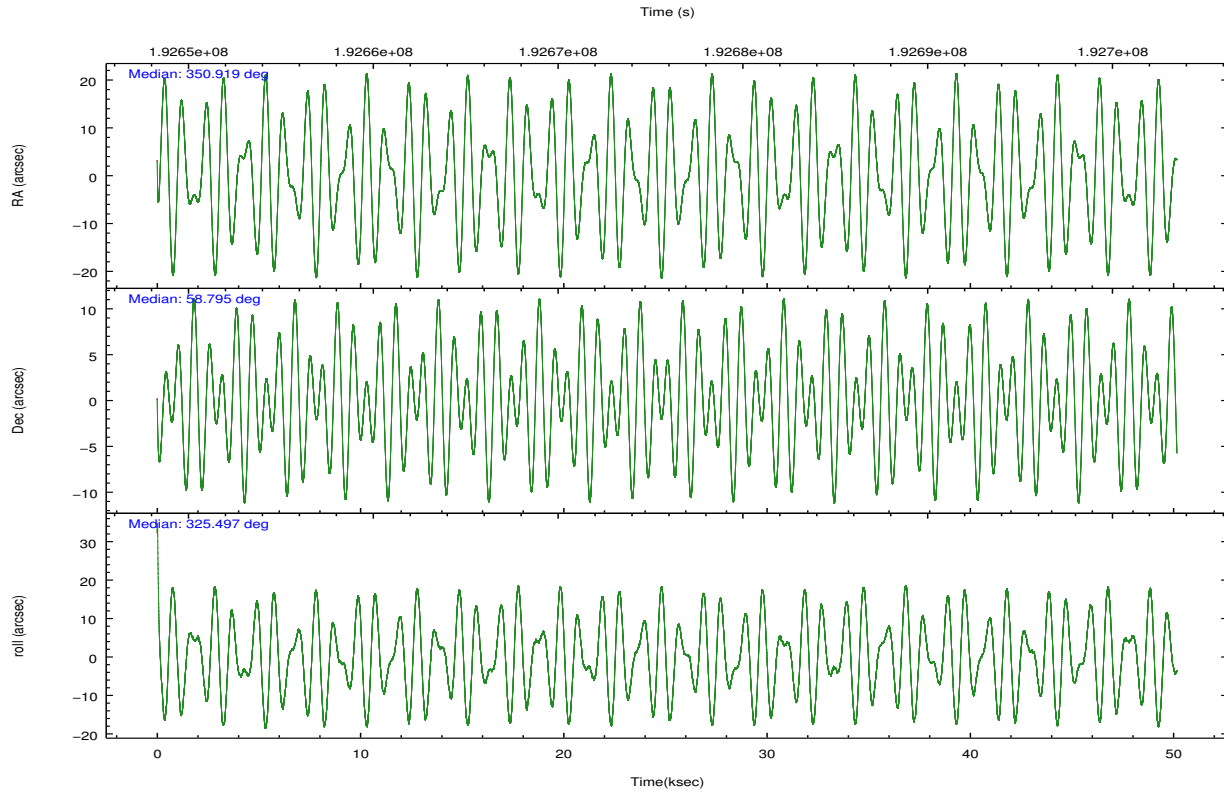
	ccd 7
grade 0 events	3510887
	21%
grade 1 events	67580
	0%
grade 2 events	4329848
	27%
grade 3 events	1671278
	10%
grade 4 events	1654914
	10%
grade 5 events	278083
	1%
grade 6 events	3967307
	24%
grade 7 events	500573
	3%

2.2 Compared Parameters

Parameter	Planned	Actual	Parameter	Planned	Actual
Instrument	ACIS	ACIS	Obspar format version number	7	7
Detector	ACIS-7	ACIS-7	Obspar file type	PREDICTED	ACTUAL
Grating	NONE	NONE	Obspar update status	NONE	UPDATED
Data mode	GRADED	GRADED	Number of optional ACIS chips dropped	0	0
Observation mode	POINTING	POINTING	On-chip summing requested	N	N
[deg] Pointing RA	350.866325	350.9187975942622	Subarray requested	NONE	NONE
[deg] Pointing Dec	58.796662	58.79489737182892	Alternating exposures requested	N	N
[deg] Pointing Roll	325.395651	325.5074066765634	[s] Primary exposure time	0.000000	3.2
[deg] Roll angle	323.400000	323.400000			
[deg] Roll tolerance	5.000000	5.000000			
Roll constraint allows 180D rotation	N	N			
[mm] SIM focus pos	-0.684267	-0.6828225247311905			
[mm] SIM defocus	0	0.001444936568705701			
[mm] SIM translation stage pos	-190.132523	-190.1400660498719			
[mm] SIM translation stage offset	0	0.00754346686406393			
[s] Observation start time (MET)	192650980.184000	192649359.48143			
Observation start date	2004-02-08T18:08:36	2004-02-08T17:42:39			
[s] Observation end time (MET)	192700980.184000	192701789.77123			
Observation end date	2004-02-09T08:01:56	2004-02-09T08:16:29			
Read mode	TIMED	TIMED			

2.3 Aspect



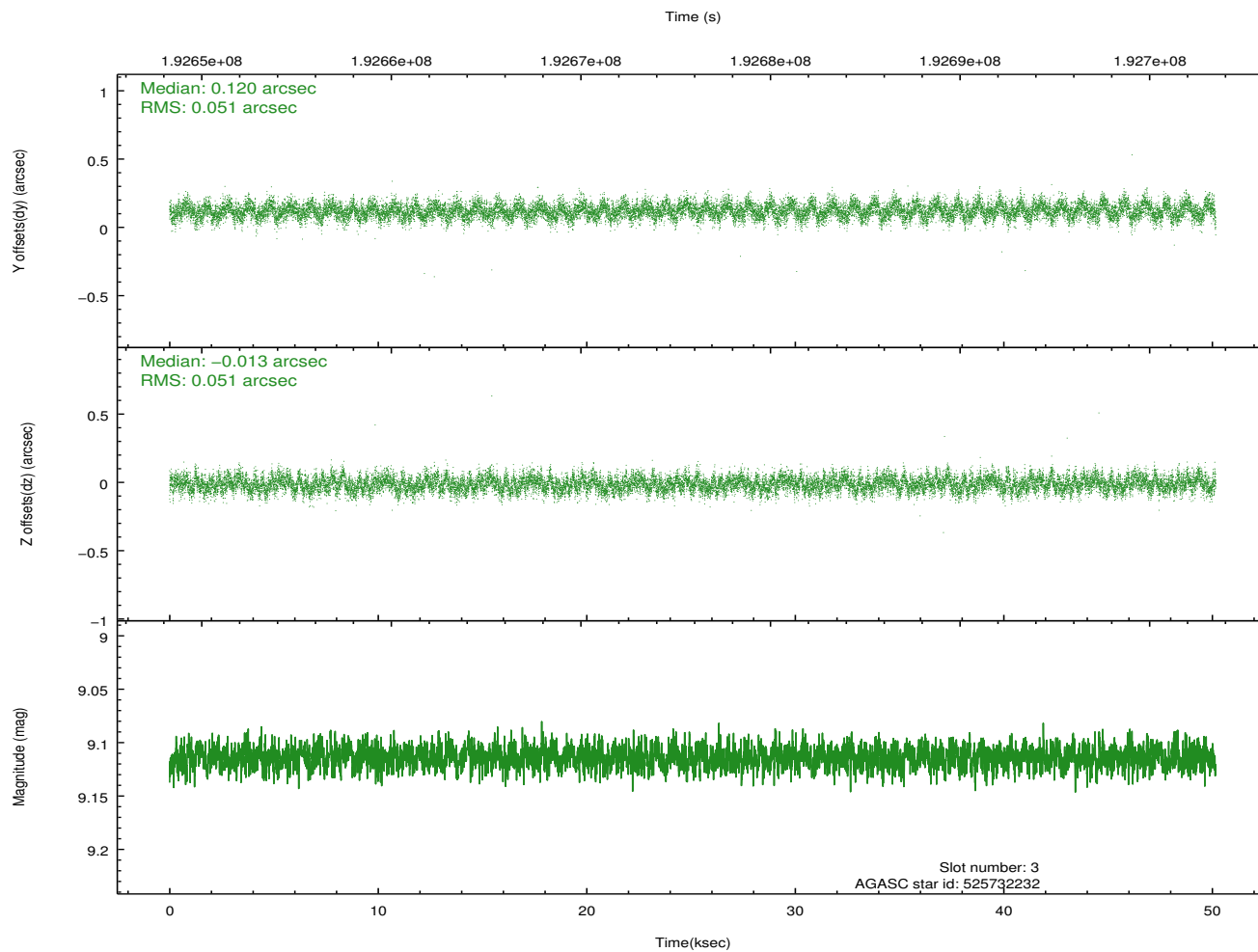
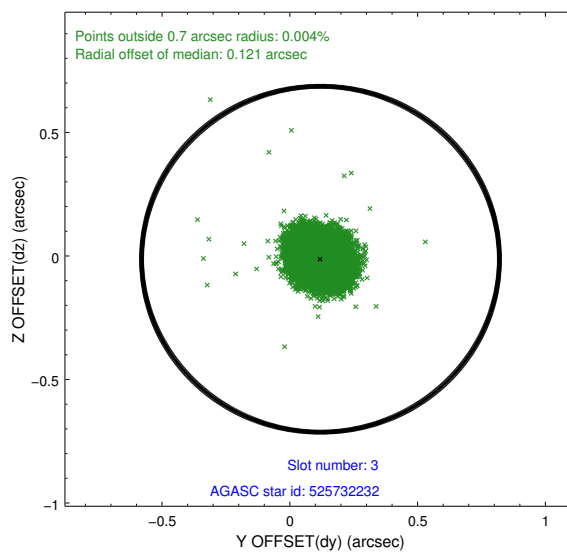
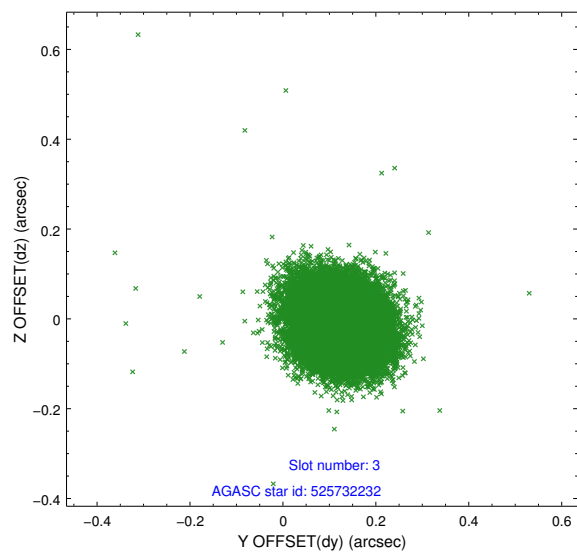


Slot Statistics

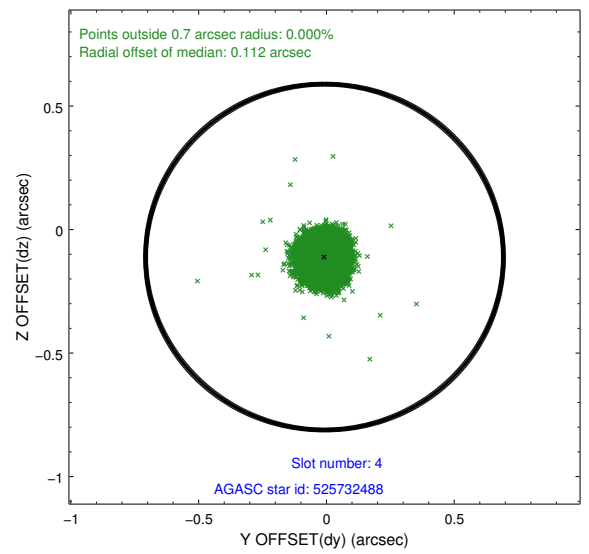
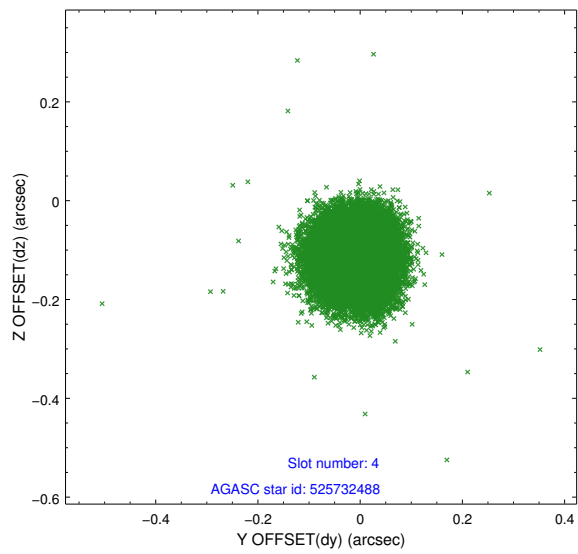
slot	status	id	mag	n_pts	med_dy	med_dz	dr1	dr2	ra	dec	mean_y	mean_z
0	FID	ACIS-S-1	7.18	12236	-0.016	-0.037	0.019	0.038	0.000000	0.000000	937.72	-1727.38
1	FID	ACIS-S-4	7.20	12235	0.071	0.039	0.015	0.031	0.000000	0.000000	2155.21	176.86
2	FID	ACIS-S-5	7.23	12236	-0.081	0.011	0.010	0.015	0.000000	0.000000	-1811.23	170.43
3	GUIDE	525732232	9.11	24460	0.120	-0.013	0.076	0.122	351.669550	58.757012	1311.31	741.95
4	GUIDE	525732488	8.40	24463	-0.008	-0.111	0.064	0.102	350.087090	58.516915	-638.14	-1653.87
5	GUIDE	525736400	9.06	24464	0.031	0.141	0.074	0.120	350.974563	59.175145	-609.55	1235.14
6	GUIDE	525735976	8.87	24464	-0.037	0.037	0.108	0.170	350.142956	58.277622	-69.49	-2309.31
7	GUIDE	525732528	9.37	24456	-0.106	-0.042	0.108	0.173	351.607241	59.298932	89.44	2267.91

2.4 Star Slots

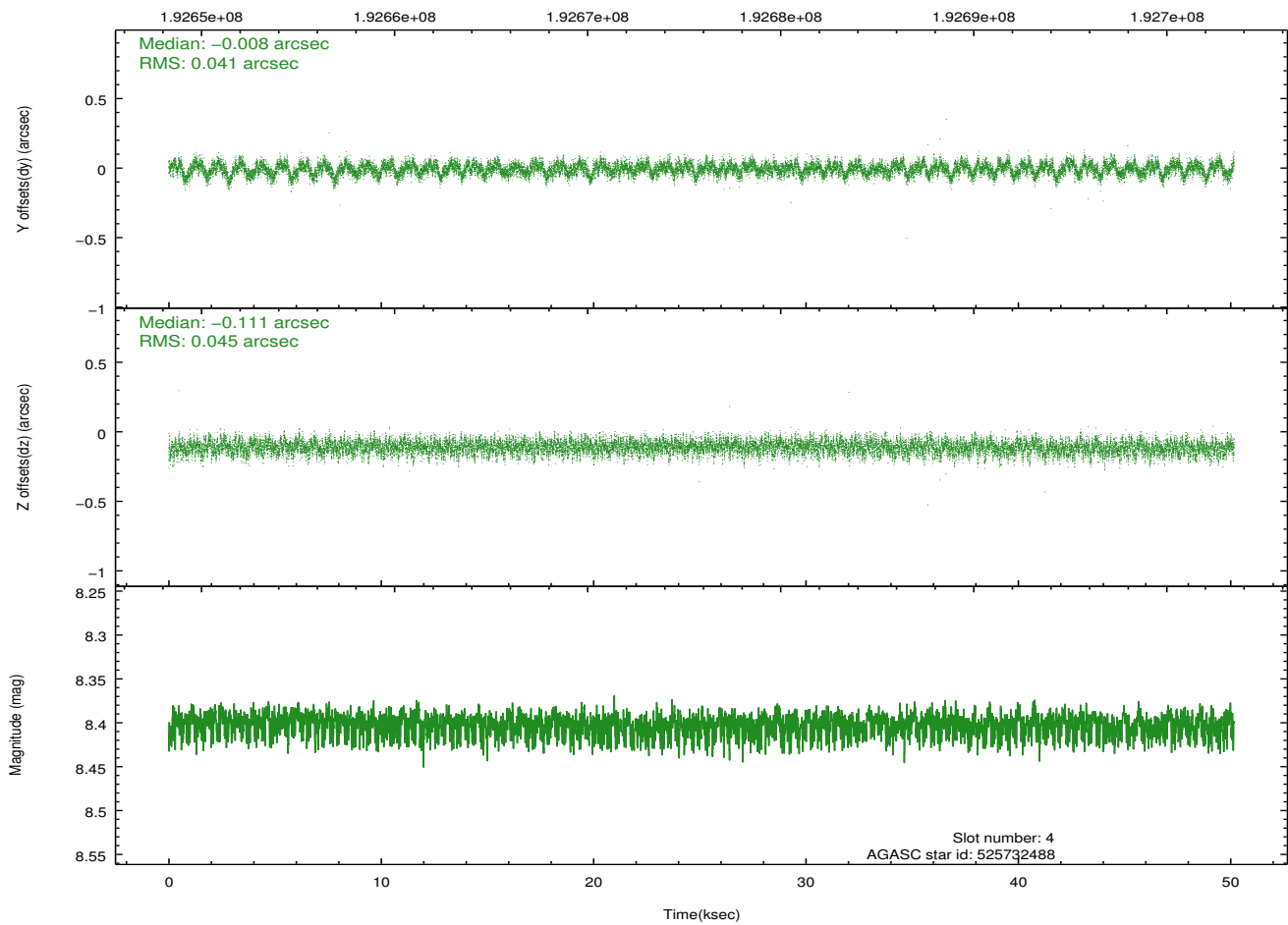
2.4.1 Slot 3



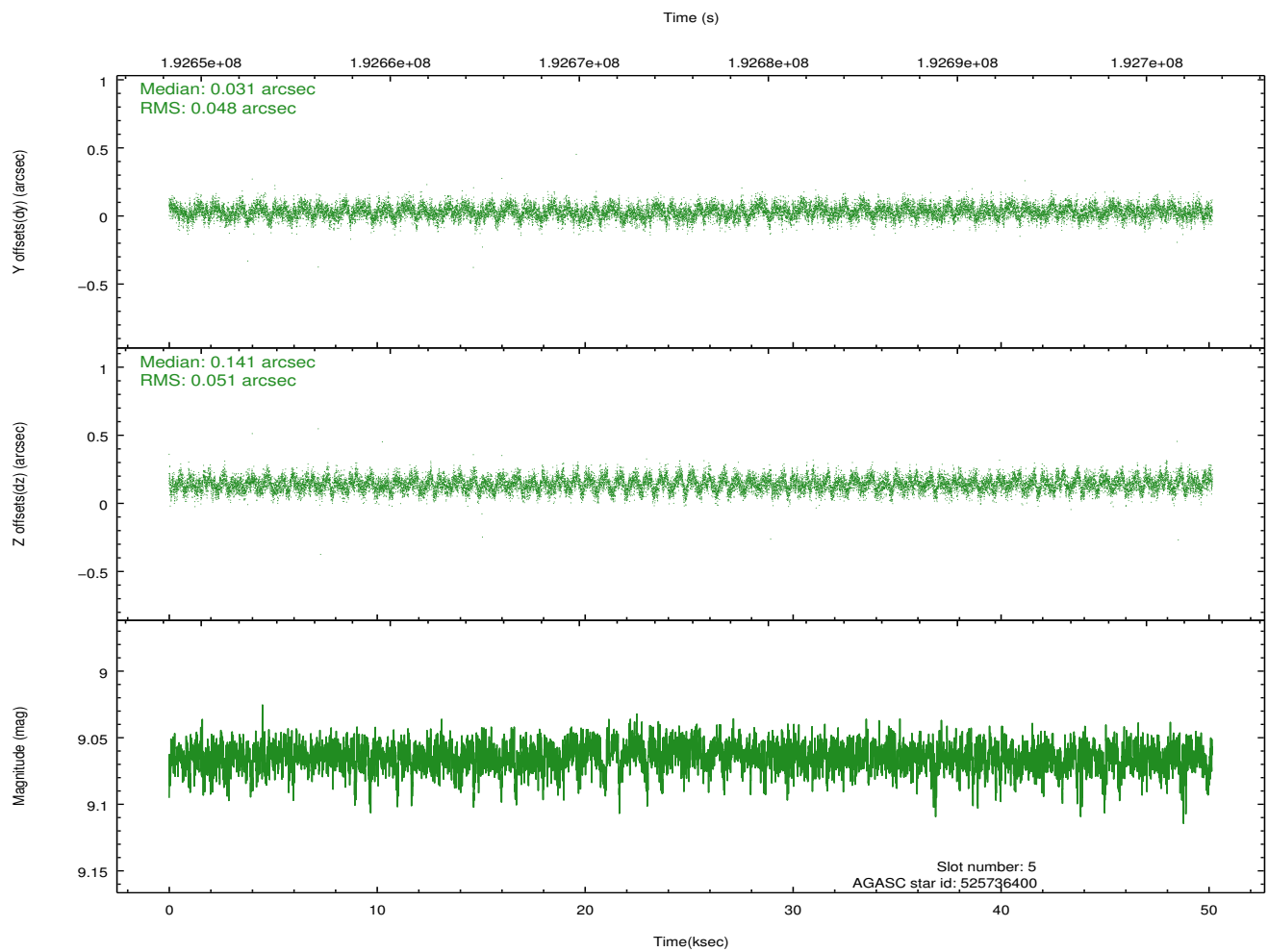
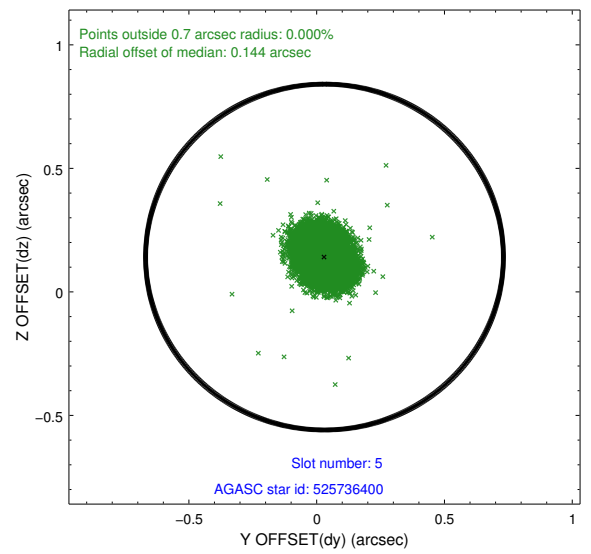
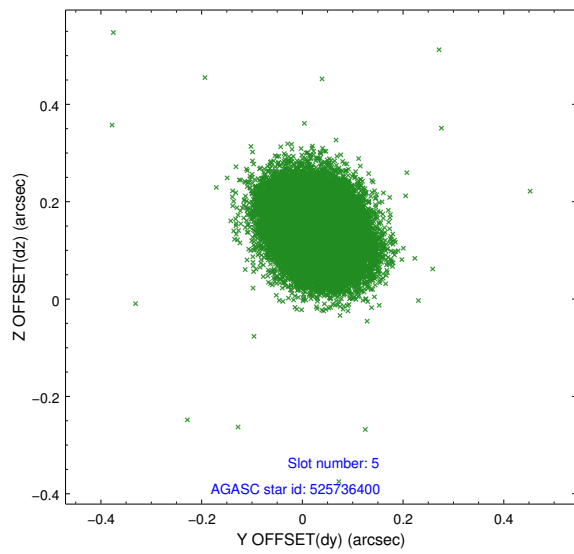
2.4.2 Slot 4



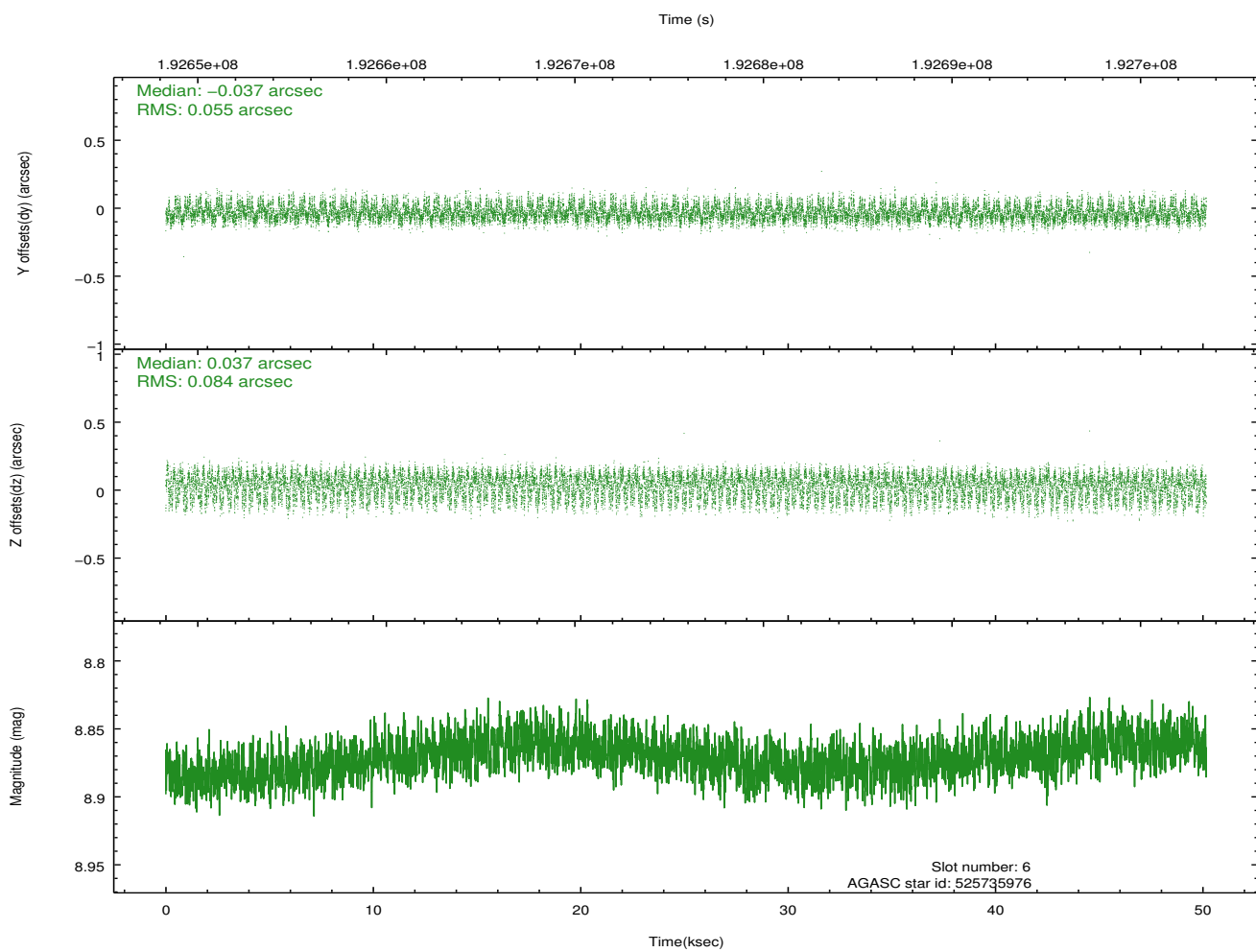
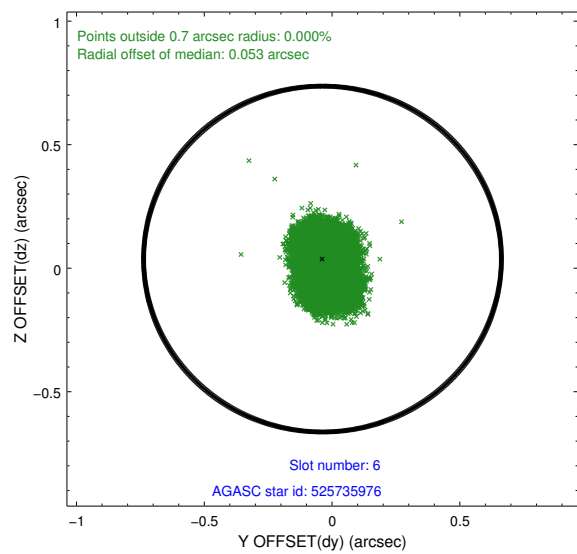
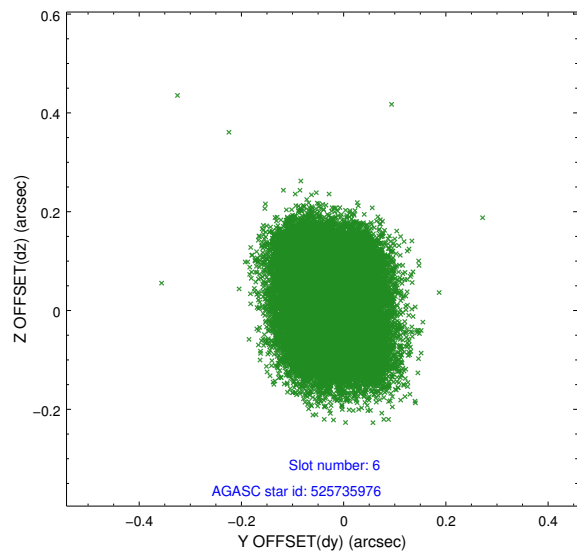
Time (s)



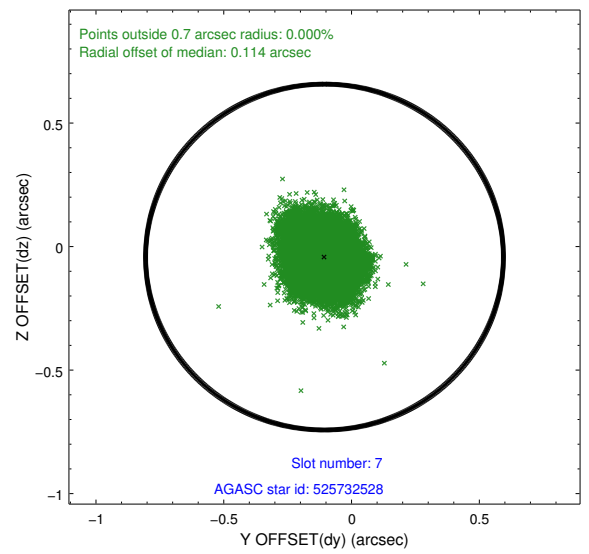
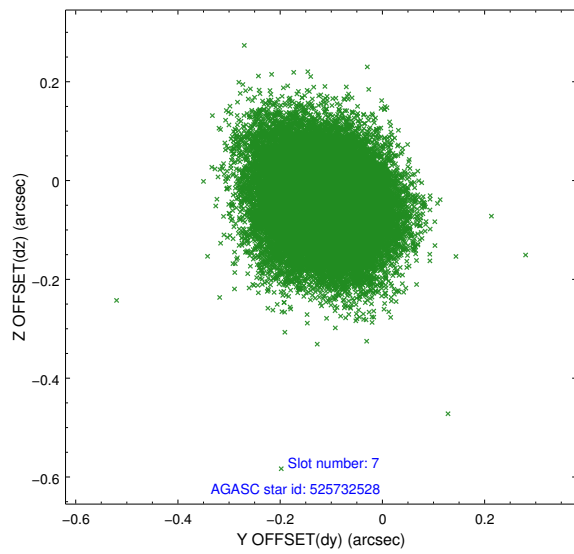
2.4.3 Slot 5



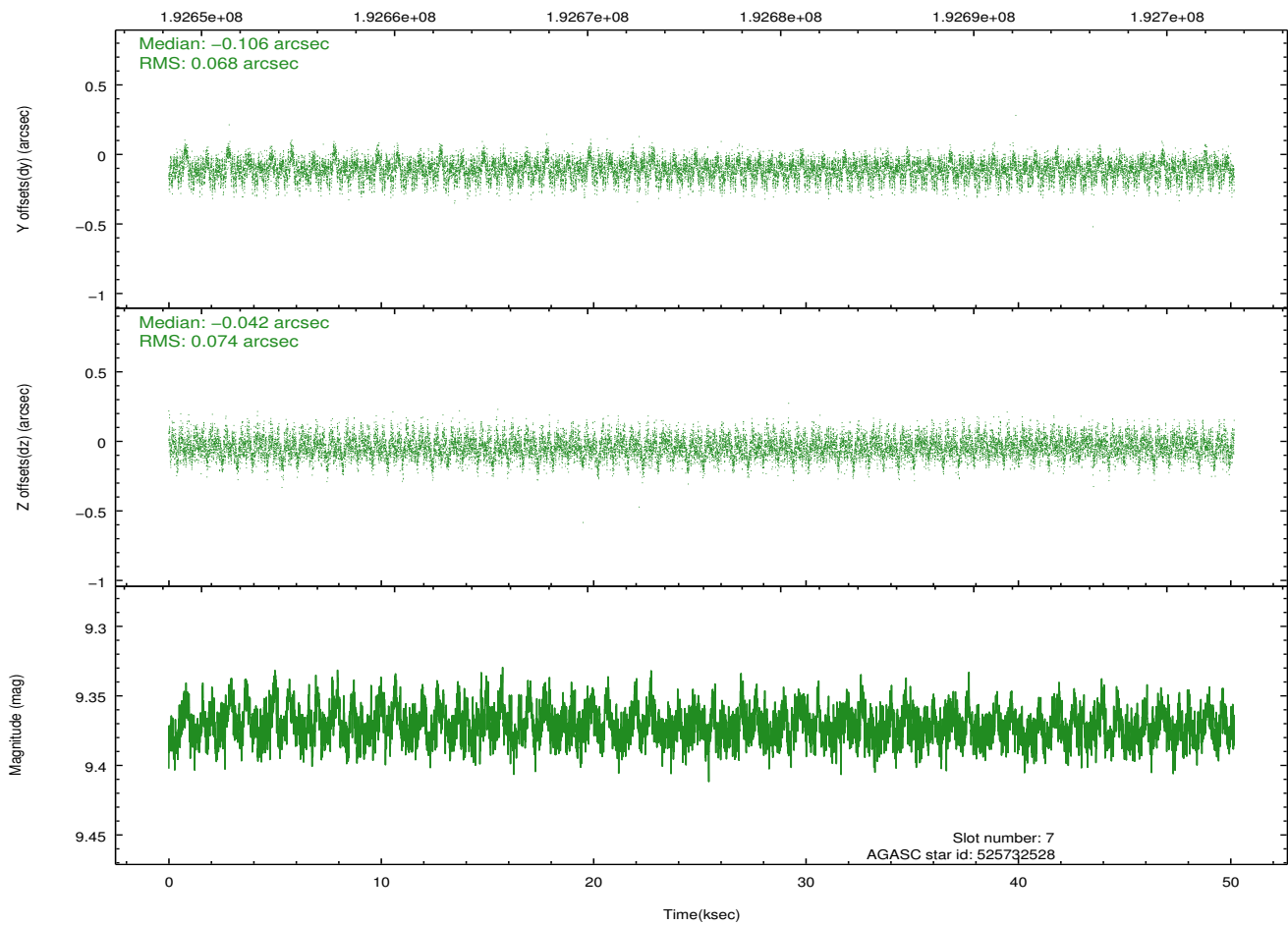
2.4.4 Slot 6



2.4.5 Slot 7

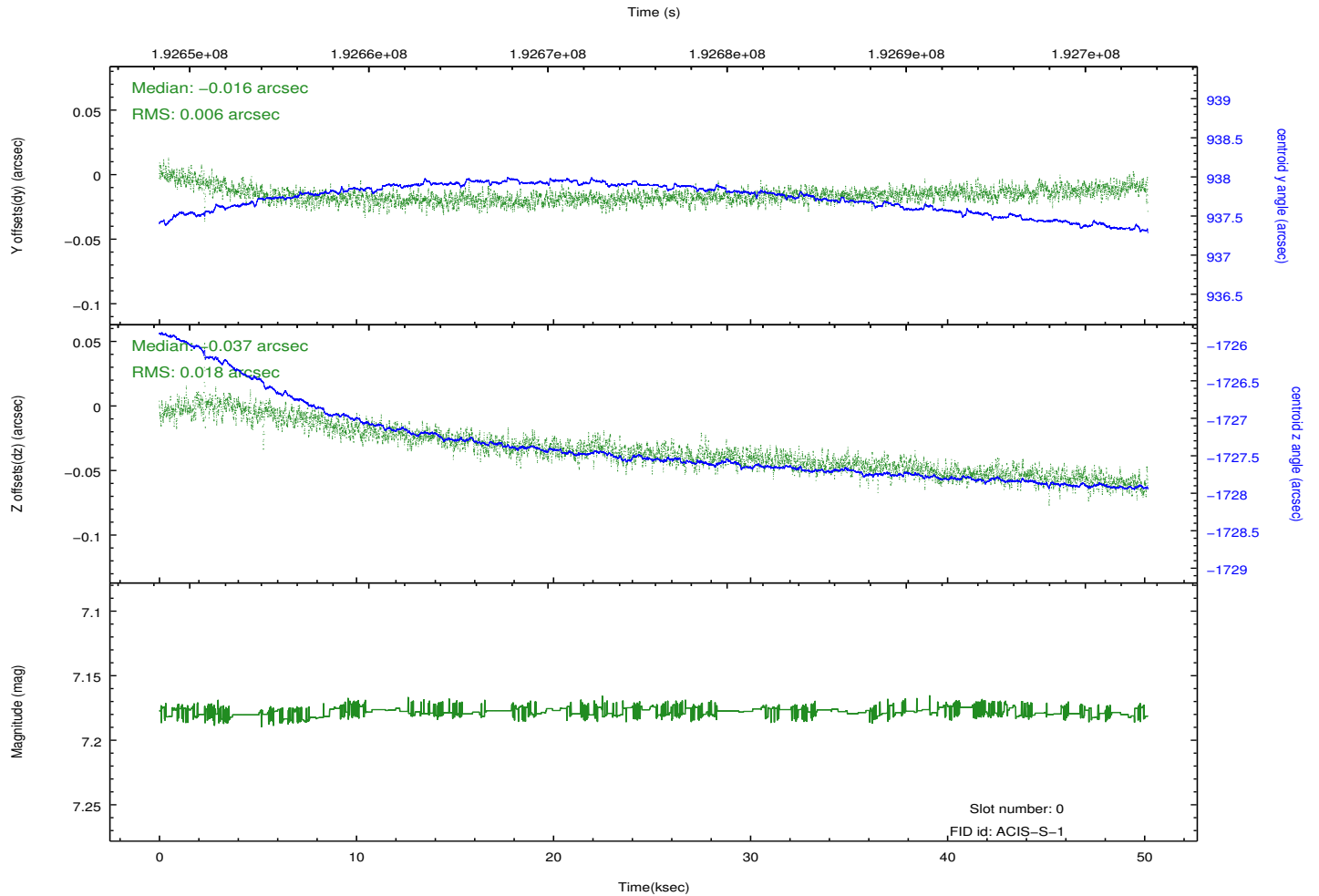
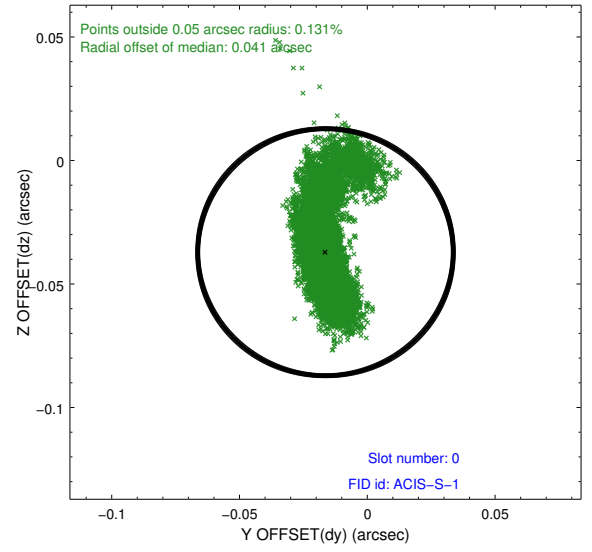
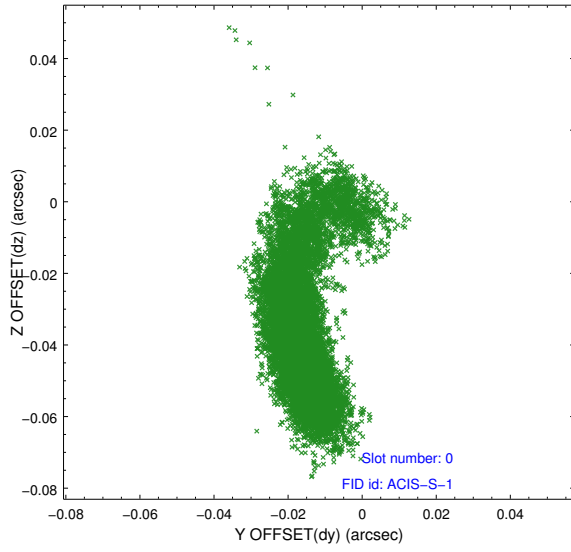


Time (s)

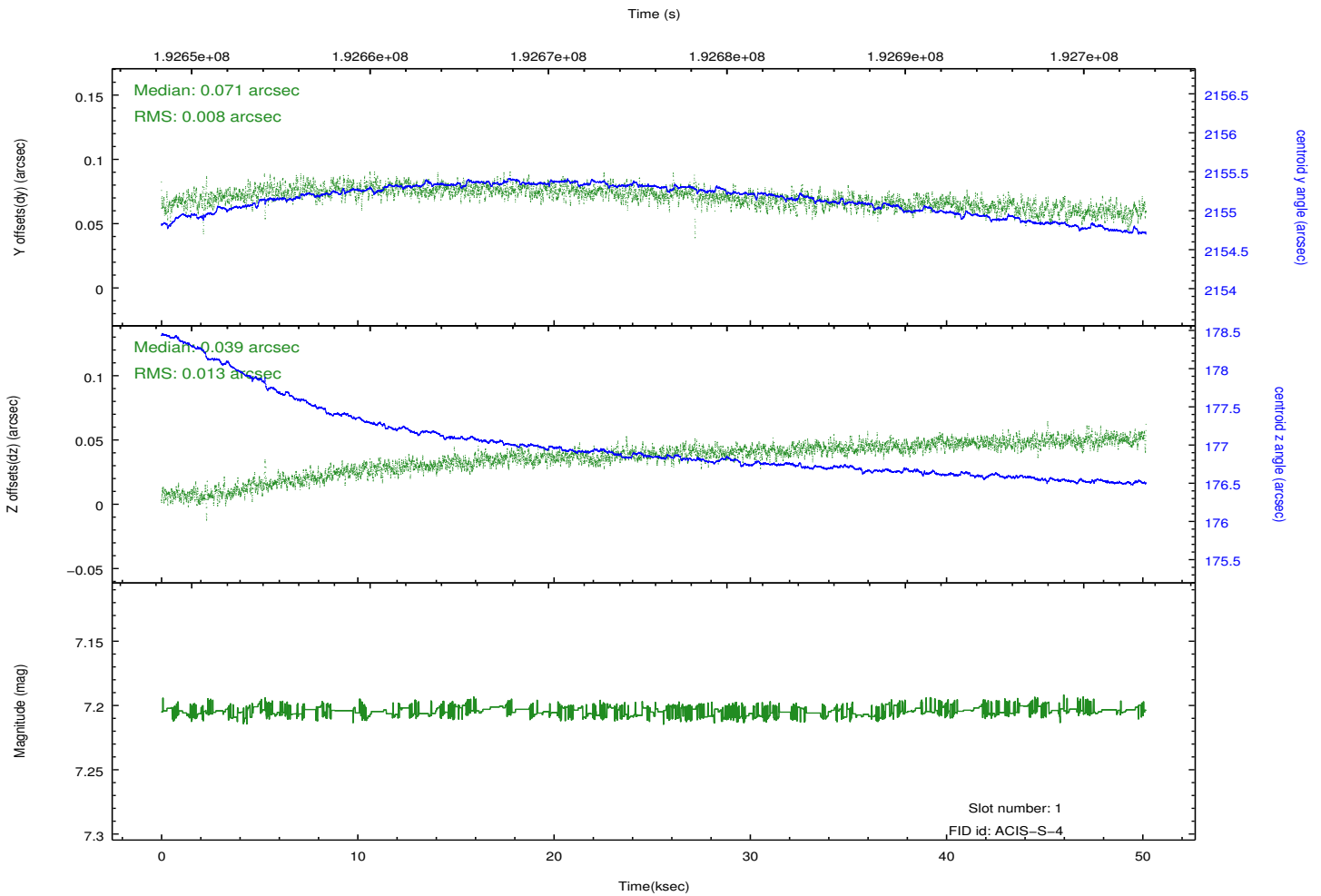
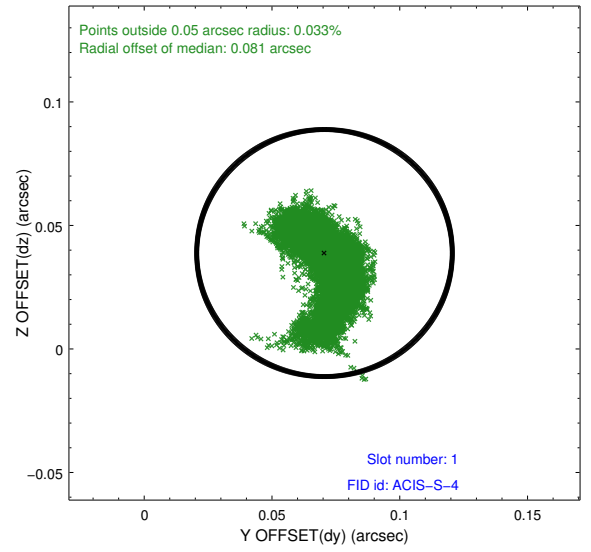
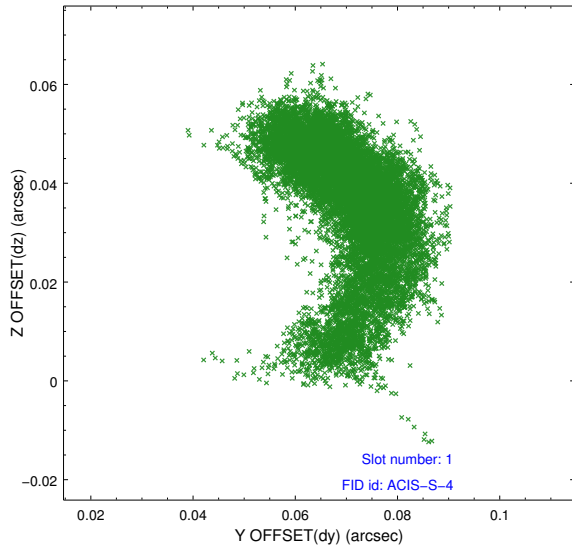


2.5 FID Slots

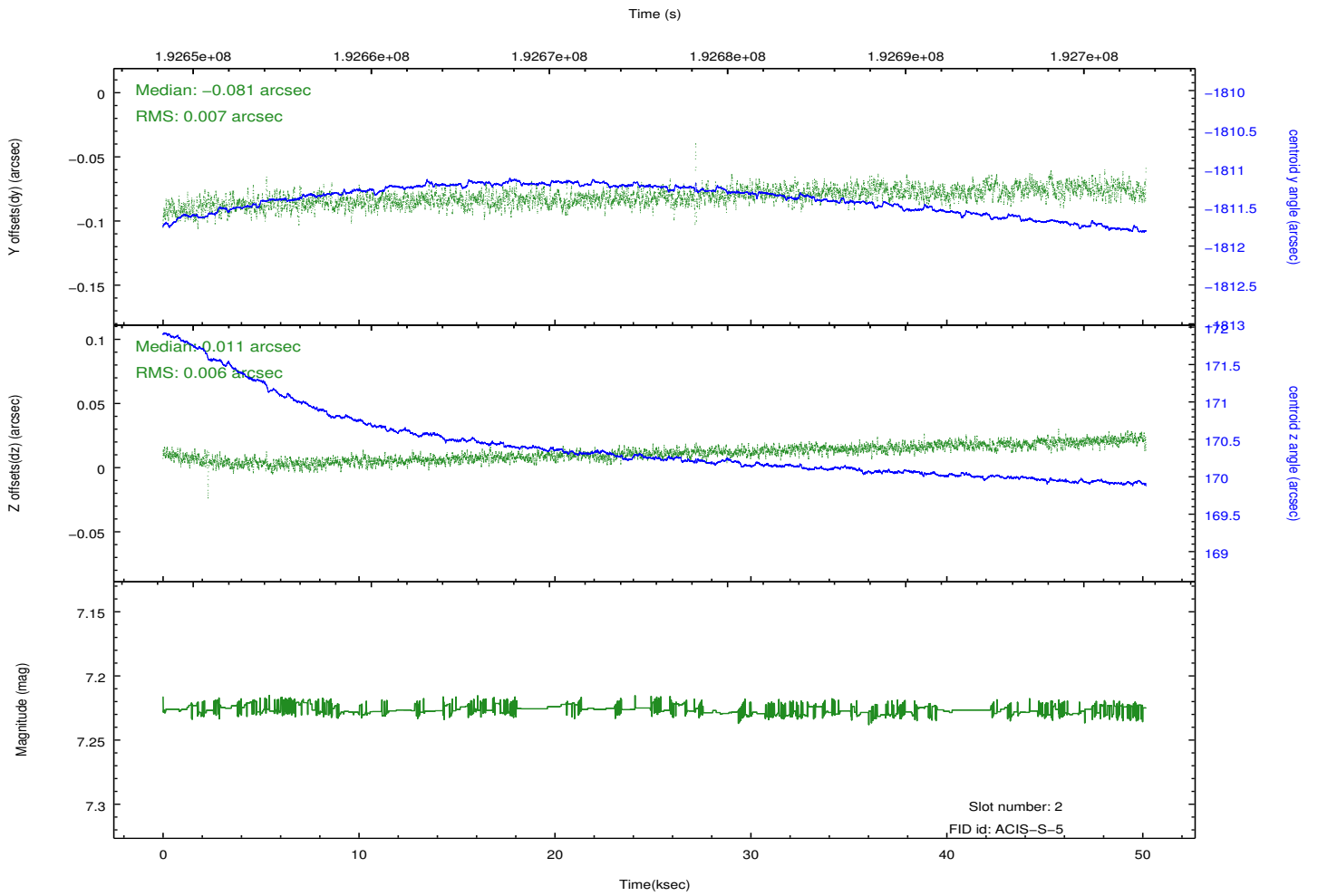
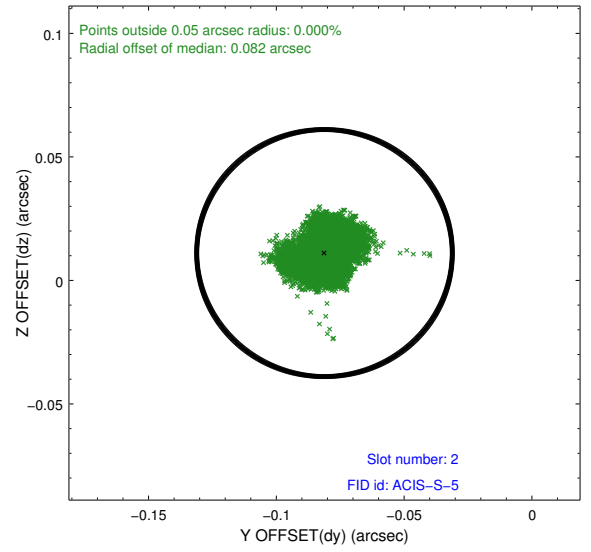
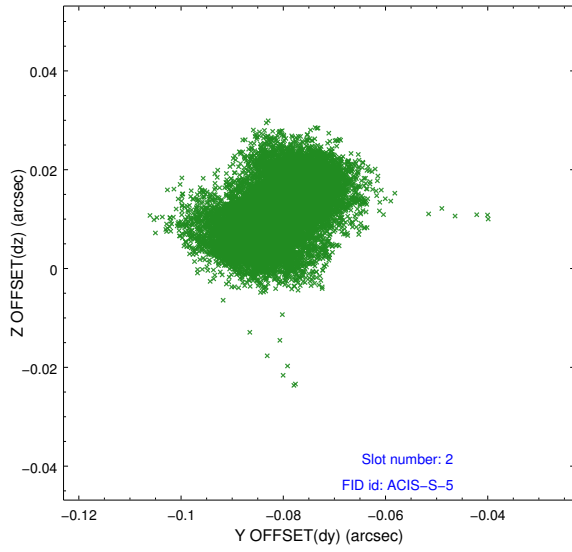
2.5.1 Slot 0



2.5.2 Slot 1



2.5.3 Slot 2



A Summary

A.1 Status

V&V Scientist	Joy Nichols
V&V Date (YYYY-MM-DD)	2013.01.17
V&V Edition	1
V&V Disposition and Status	OK
V&V Charge Time	50.156

A.2 Comments