

V&V Reference Report

L2 ASCDS Version : 8.4.3

Observation 5496 - L2 Version 2
Chandra X-Ray Center

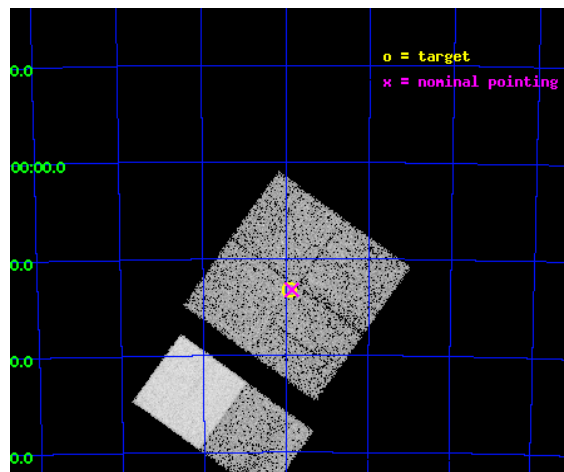
L2 Processing Date : Mar 27 2012

Contents

1	Front	2
2	OBI	3
2.1	OBI	3
2.1.1	Images	3
2.1.2	Bias	3
2.1.3	Parameters	4
2.1.4	Events	4
2.2	Compared Parameters	5
2.3	Aspect	6
2.4	Star Slots	9
2.4.1	Slot 3	9
2.4.2	Slot 4	10
2.4.3	Slot 5	11
2.4.4	Slot 6	12
2.4.5	Slot 7	13
2.5	FID Slots	14
2.5.1	Slot 0	14
2.5.2	Slot 1	15
2.5.3	Slot 2	16
A	Summary	17
A.1	Status	17
A.2	Comments	17

1 Front

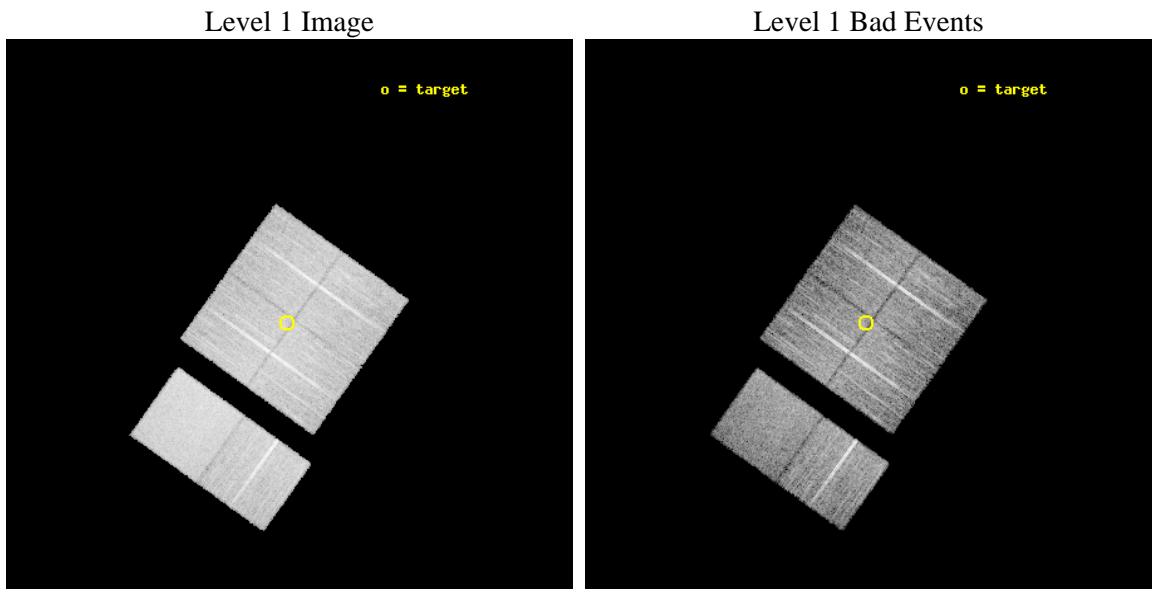
seq_num	400426	Sequence number
obs_id	5496	Observation id
title	Discovering X-ray pulsars in the Wing of the Small Magellanic Cloud	
observer	Prof Malcolm Coe	Principal investigator
object	SMCwing 17	Source name
dtycycle	0	
cycle	P	events from which exps? Prim/Second/Both
ra_targ	16.979167	Observer's specified target RA [deg]
dec_targ	-73.219444	Observer's specified target Dec [deg]
ra_nom	16.96349494835	Nominal RA [deg]
dec_nom	-73.220431154447	Nominal Dec [deg]
roll_nom	215.59959273912	Nominal Roll [deg]
revision	2	Processing version of data
ontime	9948.7999629378	Sum of GTIs [s]
livetime	9822.822267359	Livetime [s]
ontime0	9945.5589926243	Sum of GTIs [s]
ontime1	9948.7999629378	Sum of GTIs [s]
ontime2	9948.7999629378	Sum of GTIs [s]
ontime3	9948.7999629378	Sum of GTIs [s]
ontime6	9948.7999629378	Sum of GTIs [s]
ontime7	9948.7999629378	Sum of GTIs [s]
l2events	90968	Number of level 2 events



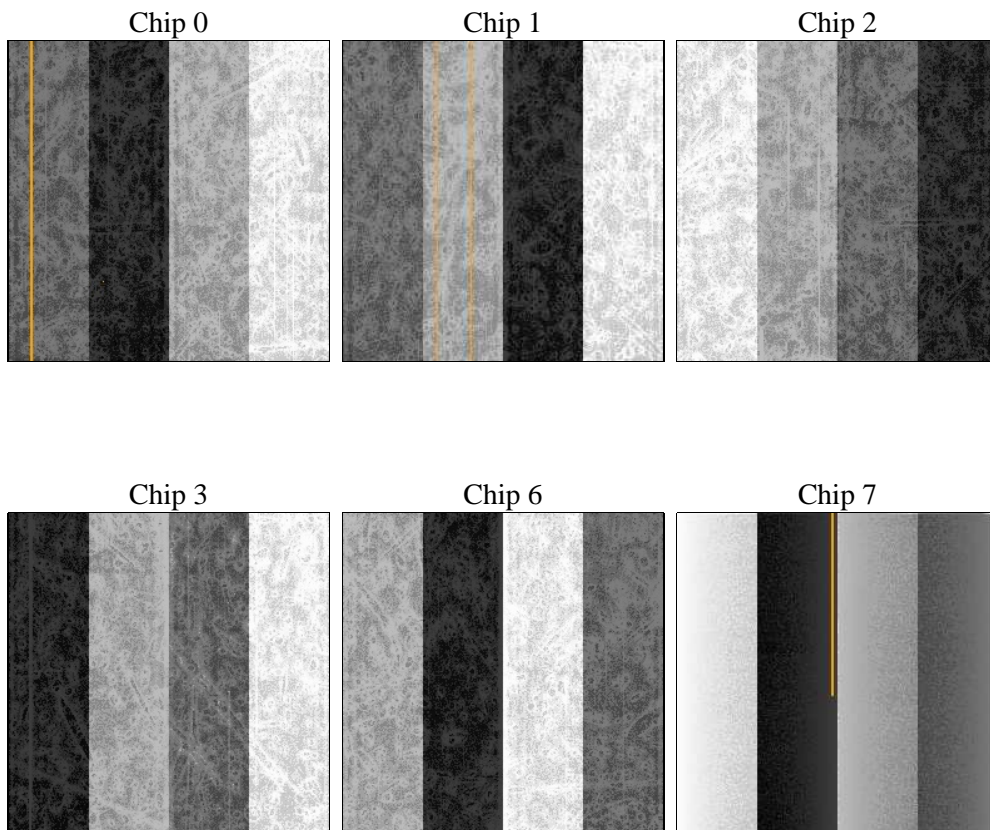
2 OBI

2.1 OBI

2.1.1 Images



2.1.2 Bias



2.1.3 Parameters

obi_num	0	Obi number	sched_exp_time	10000.000000	[s] Scheduled observation exposure time
ascdsver	8.4.3	Processing system revision	ontime	9948.7999629378	Sum of GTIs [s]
caldbver	4.4.8	 	ontime0	9945.5589926243	Sum of GTIs [s]
date	2012-03-27T03:30:33	Date and time of file creation	ontime1	9948.7999629378	Sum of GTIs [s]
revision	2	Processing version of data	ontime2	9948.7999629378	Sum of GTIs [s]
			ontime3	9948.7999629378	Sum of GTIs [s]
			ontime6	9948.7999629378	Sum of GTIs [s]
			ontime7	9948.7999629378	Sum of GTIs [s]
			l1events	537370	Number of level 1 events

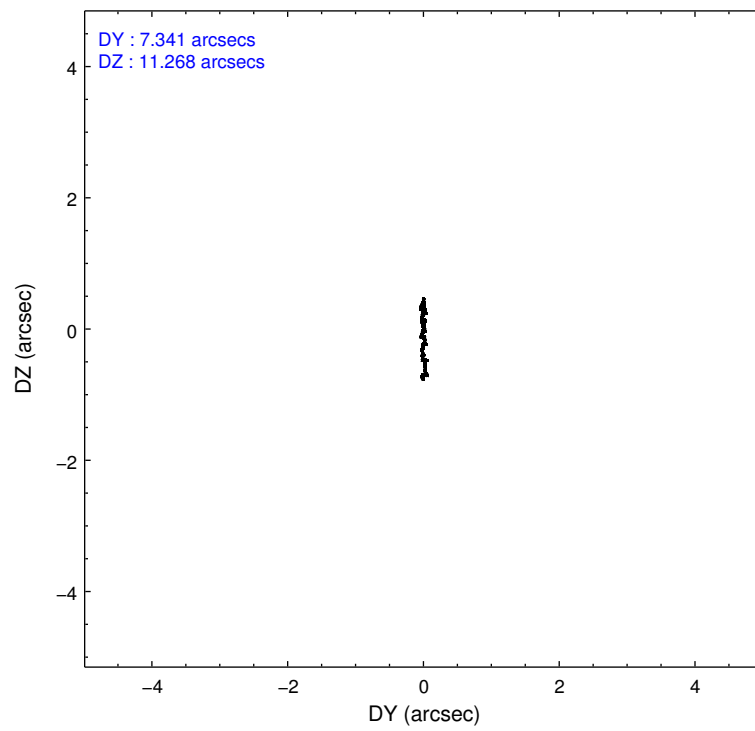
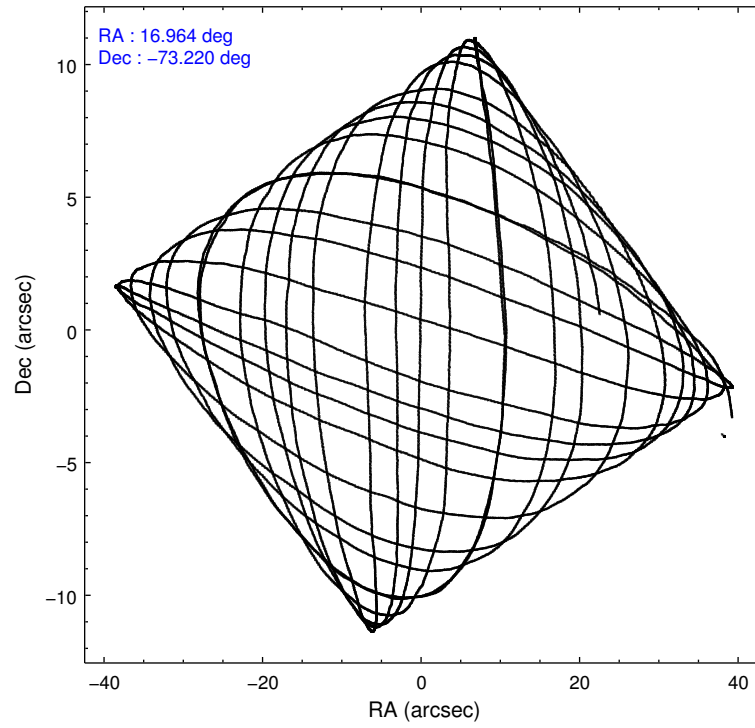
2.1.4 Events

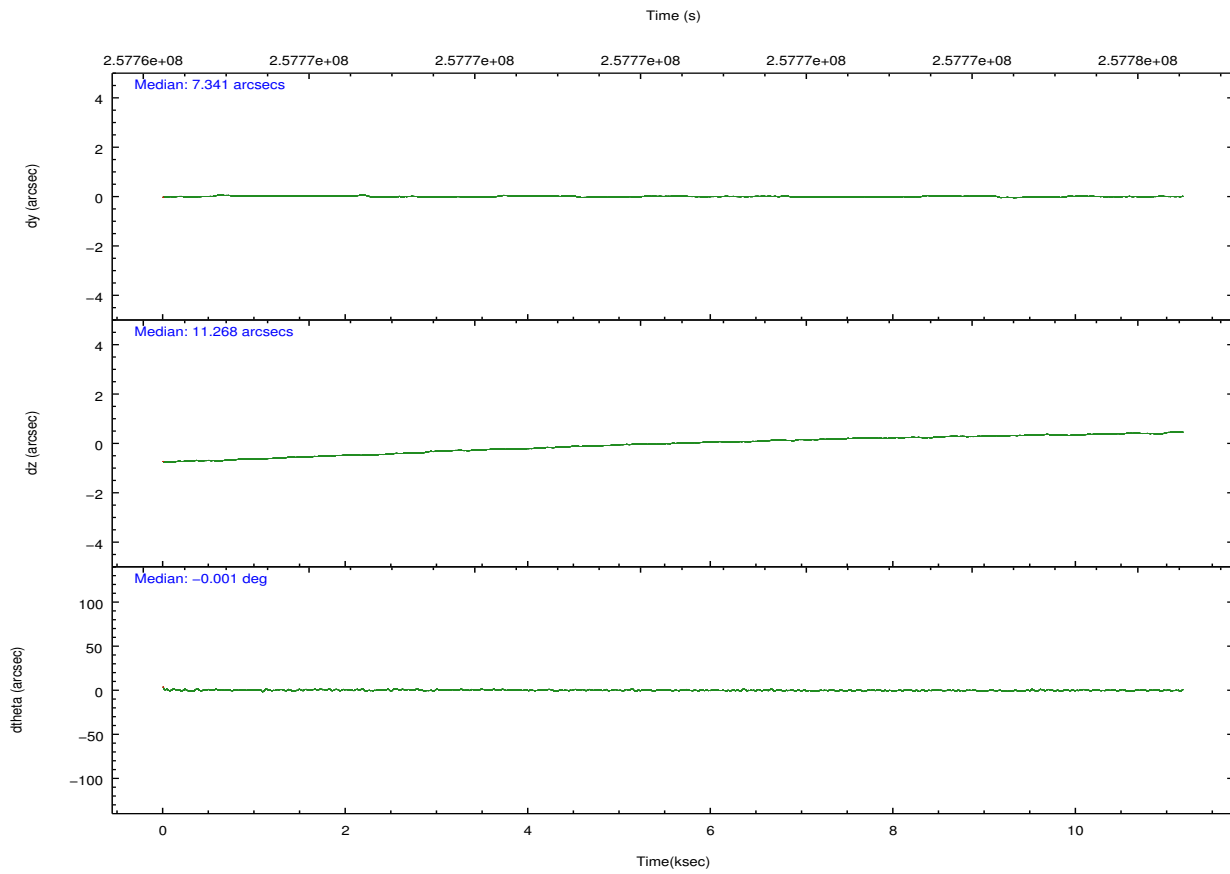
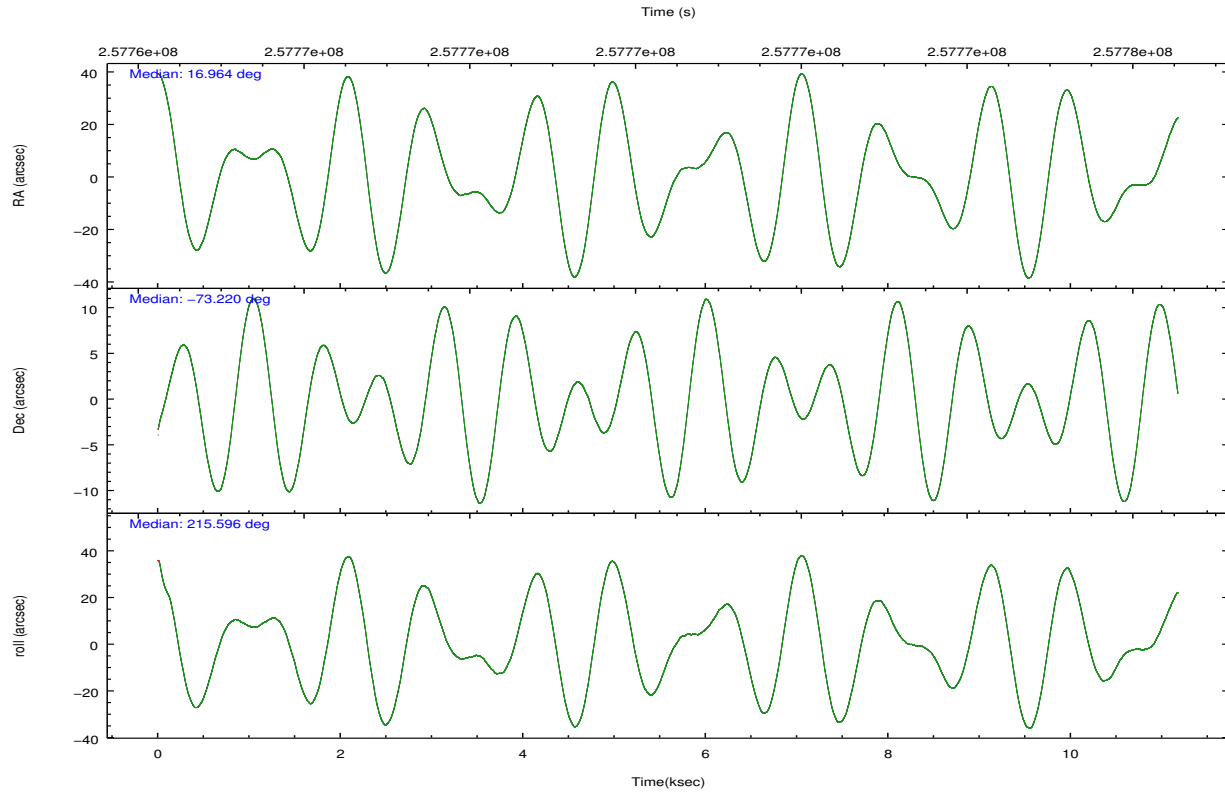
	ccd 0	ccd 1	ccd 2	ccd 3	ccd 6	ccd 7		ccd 0	ccd 1	ccd 2	ccd 3	ccd 6	ccd 7
level 1 events	79999	79331	87542	85661	88901	115936	grade 0 events	4286	4141	4553	4321	3951	4103
rejected events	69740	68669	77405	75618	78620	68104		5%	5%	5%	5%	4%	3%
rejected %	87%	86%	88%	88%	88%	58%	grade 1 events	61	32	59	57	49	110
								0%	0%	0%	0%	0%	0%
							grade 2 events	2229	2348	2056	1997	2216	9565
								2%	2%	2%	2%	2%	8%
							grade 3 events	1035	991	920	961	983	4112
								1%	1%	1%	1%	1%	3%
							grade 4 events	966	1069	983	998	982	4195
								1%	1%	1%	1%	1%	3%
							grade 5 events	3352	3669	3215	3826	4107	11219
								4%	4%	3%	4%	4%	9%
							grade 6 events	1749	2124	1635	1774	2153	25895
								2%	2%	1%	2%	2%	22%
							grade 7 events	66321	64957	74121	71727	74460	56737
								82%	81%	84%	83%	83%	48%

2.2 Compared Parameters

Parameter	Planned	Actual	Parameter	Planned	Actual
Instrument	ACIS	ACIS	Obspar format version number	7	7
Detector	ACIS-012367	ACIS-012367	Obspar file type	PREDICTED	ACTUAL
Grating	NONE	NONE	Obspar update status	NONE	UPDATED
Data mode	FAINT	FAINT	Number of optional ACIS chips dropped	0	0
Observation mode	POINTING	POINTING	On-chip summing requested	N	N
[deg] Pointing RA	17.002277	16.96349494834953	Subarray requested	NONE	NONE
[deg] Pointing Dec	-73.195455	-73.22043115444724	Alternating exposures requested	N	N
[deg] Pointing Roll	215.428038	215.5995927391217	[s] Primary exposure time	0.000000	3.2
[mm] SIM focus pos	-0.782348	-0.7809083437167272			
[mm] SIM defocus	0	0.001439871863259334			
[mm] SIM translation stage pos	-233.592463	-233.5874344608287			
[mm] SIM translation stage offset	0	-0.005018542100998502			
[s] Observation start time (MET)	257765979.184000	257764523.07454			
Observation start date	2006-03-03T09:38:34	2006-03-03T09:15:23			
[s] Observation end time (MET)	257775979.184000	257776113.26258			
Observation end date	2006-03-03T12:25:14	2006-03-03T12:28:33			
Read mode	TIMED	TIMED			

2.3 Aspect



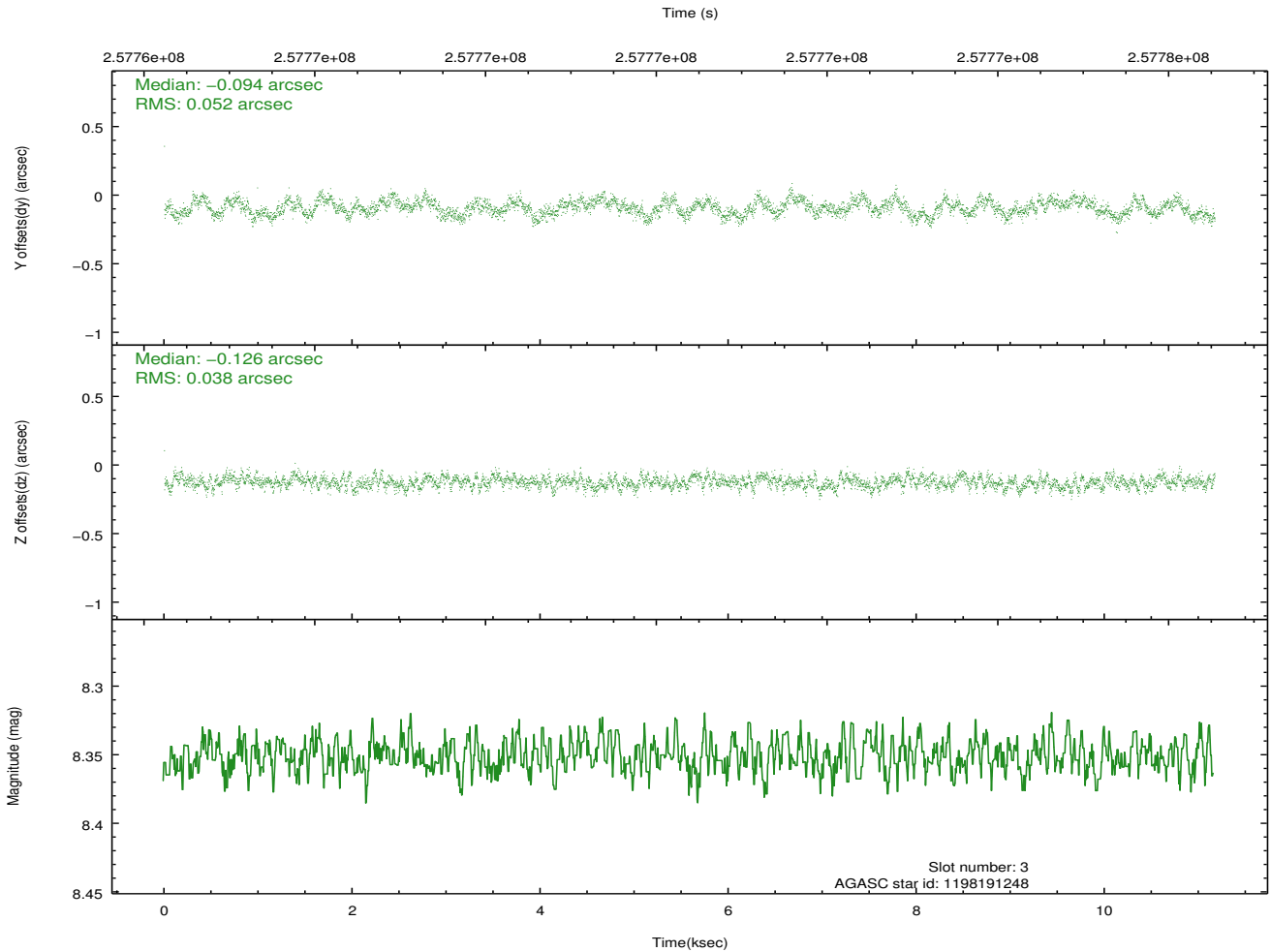
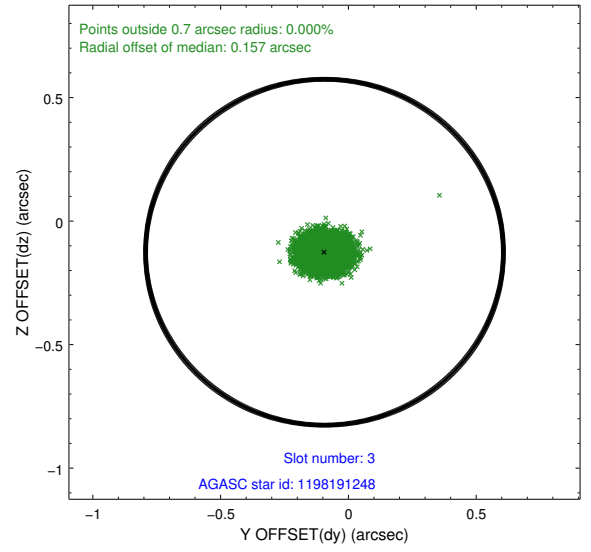
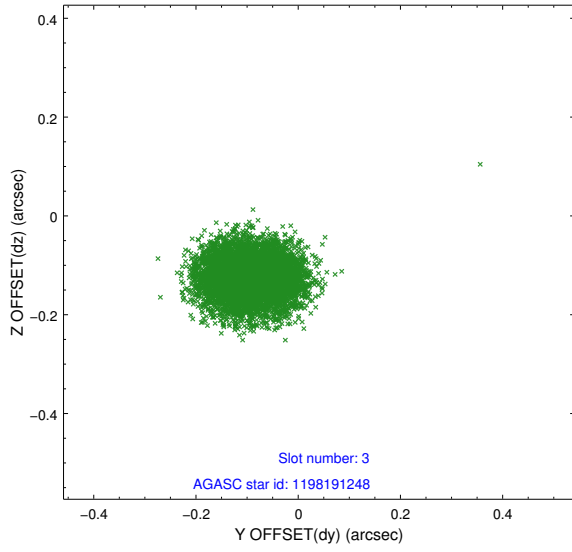


Slot Statistics

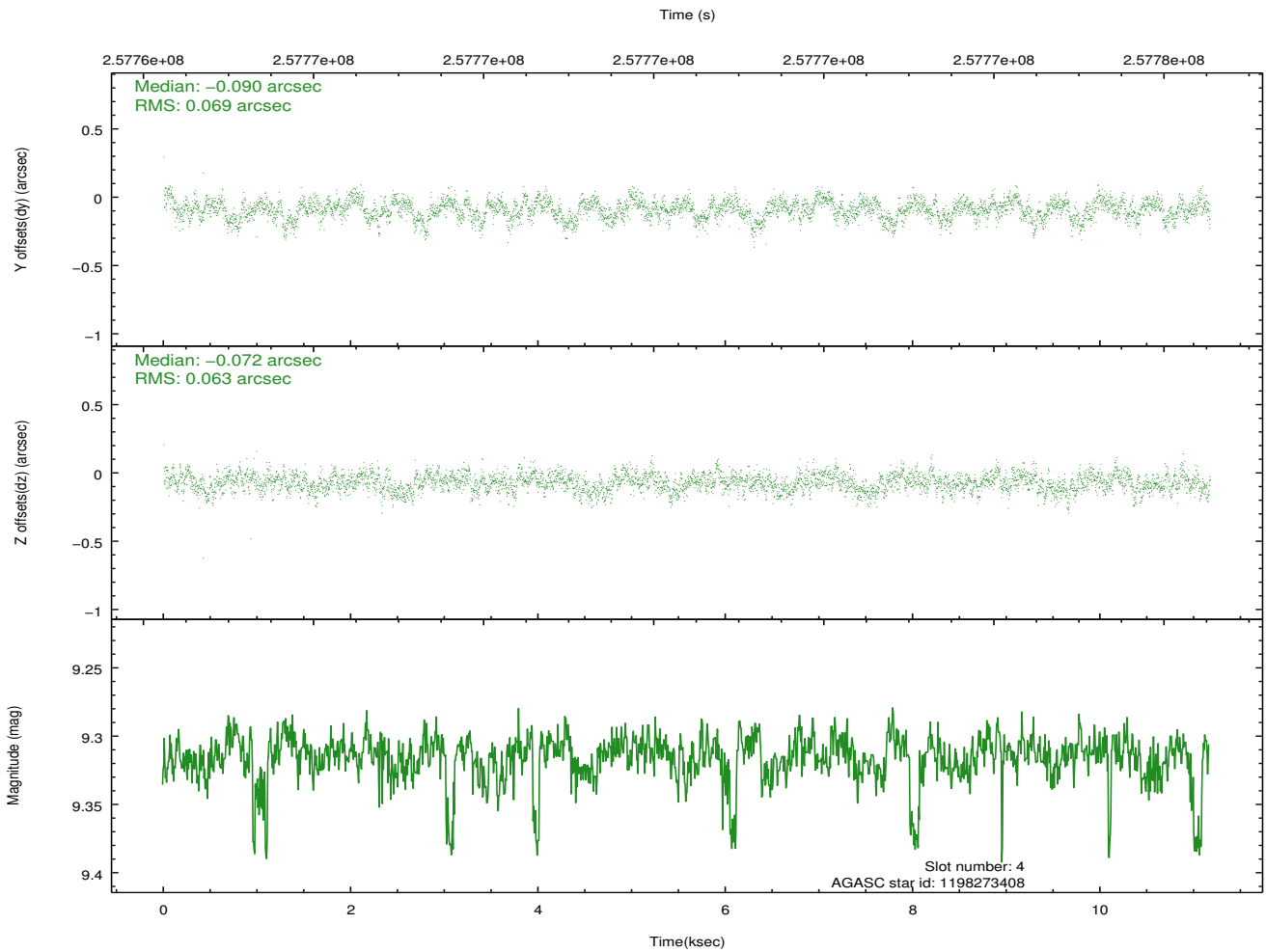
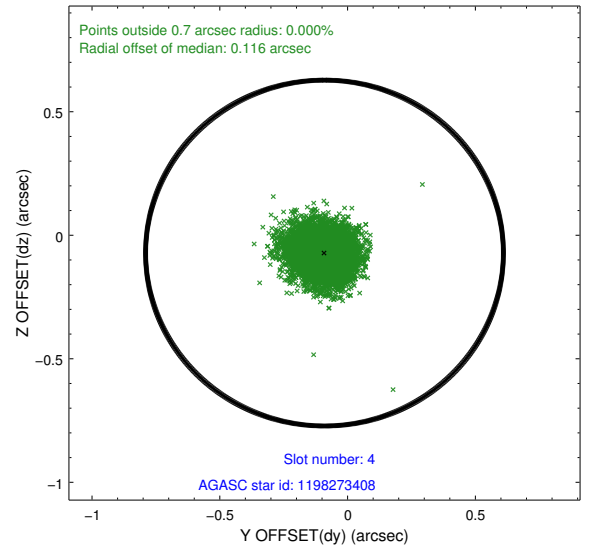
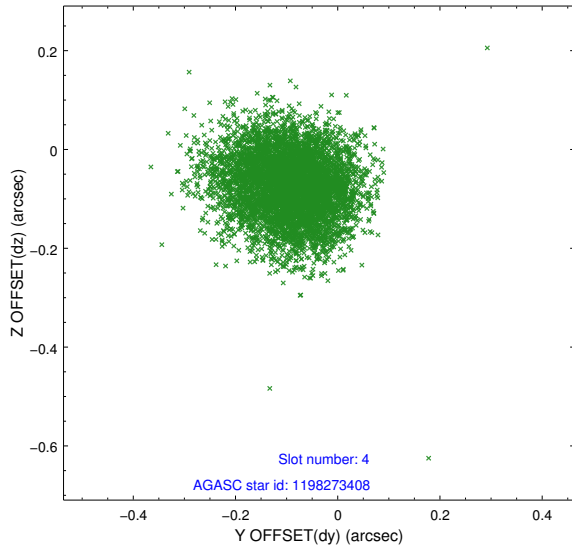
slot	status	id	mag	n_pts	med_dy	med_dz	dr1	dr2	ra	dec	mean_y	mean_z
0	FID	ACIS-I-1	7.24	2726	-0.014	-0.067	0.020	0.046	0.000000	0.000000	932.30	-834.77
1	FID	ACIS-I-4	7.17	2726	0.125	0.076	0.016	0.032	0.000000	0.000000	2152.77	1064.92
2	FID	ACIS-I-5	7.22	2725	-0.209	0.061	0.010	0.019	0.000000	0.000000	-1815.28	1063.33
3	GUIDE	1198191248	8.35	5450	-0.094	-0.126	0.070	0.107	15.995132	-73.462457	1403.51	192.31
4	GUIDE	1198273408	9.31	5435	-0.090	-0.072	0.099	0.159	17.532323	-73.621495	452.42	1563.88
5	GUIDE	1198282744	9.02	5444	0.065	0.061	0.083	0.142	17.028326	-73.013356	-401.68	-517.61
6	GUIDE	1198283128	7.80	5449	-0.042	0.142	0.073	0.117	17.272580	-72.642428	-1389.83	-1453.27
7	GUIDE	1198192176	9.55	5439	0.163	-0.008	0.117	0.188	14.042526	-73.121350	2409.86	-1947.75

2.4 Star Slots

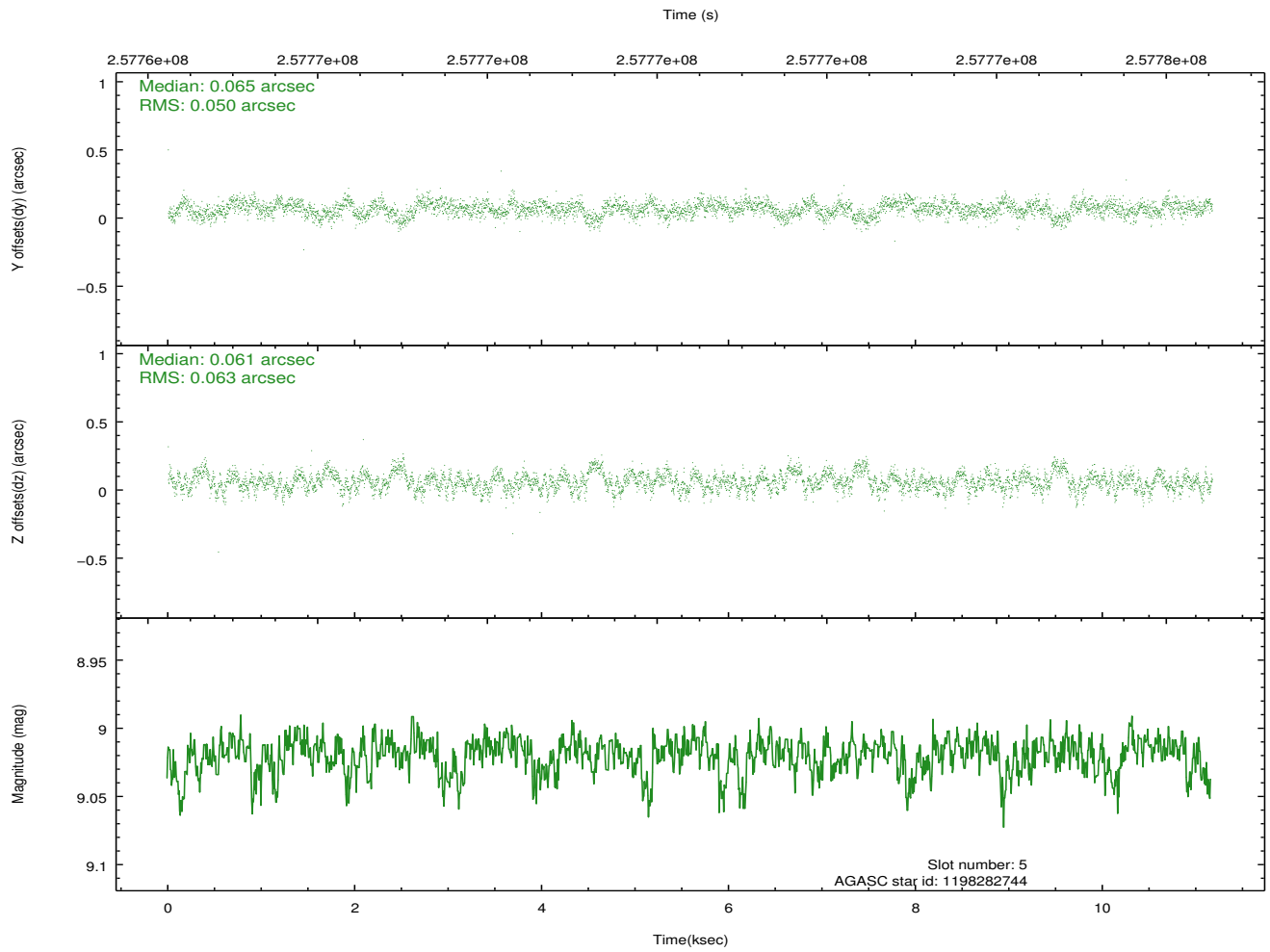
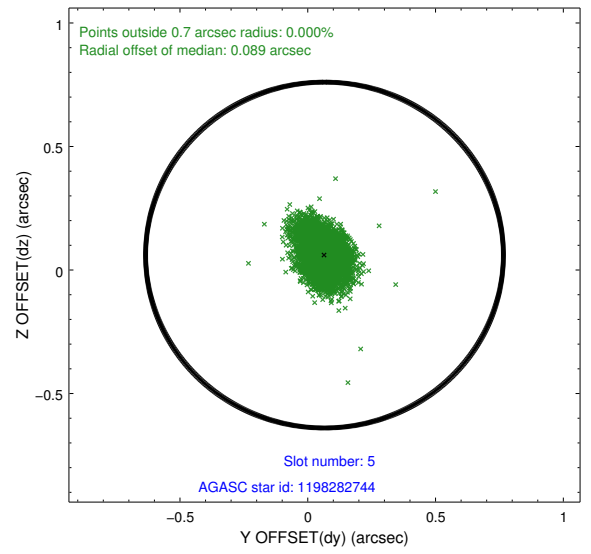
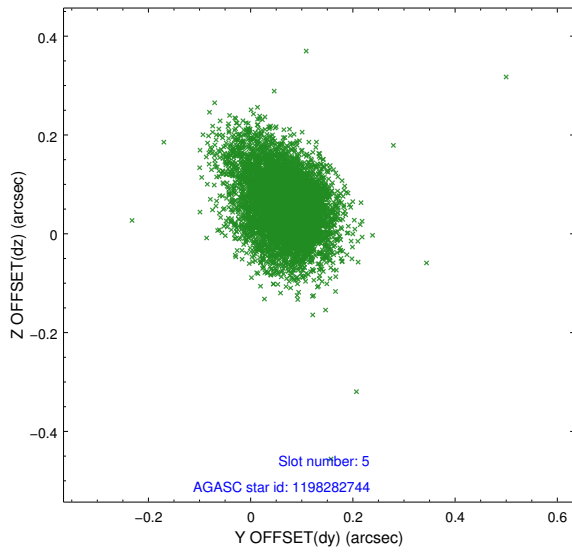
2.4.1 Slot 3



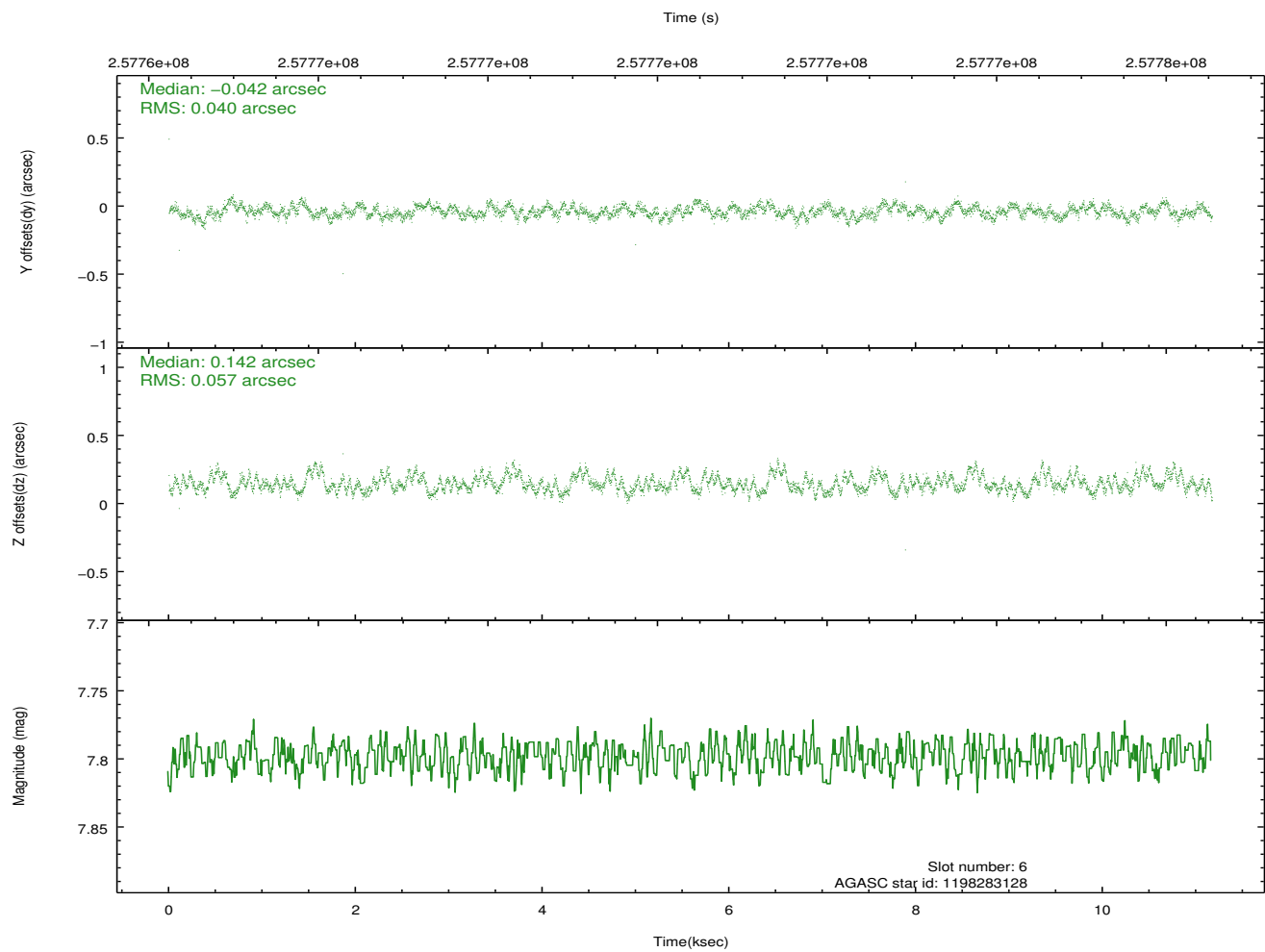
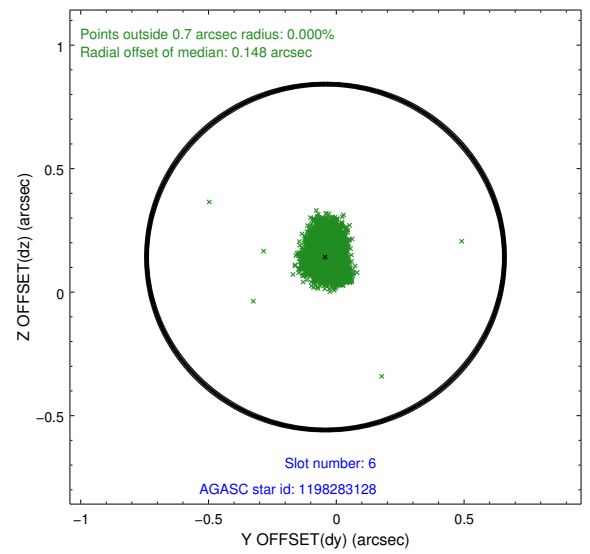
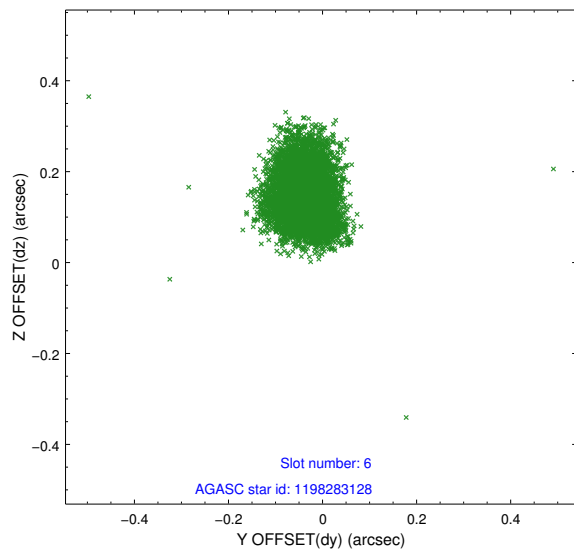
2.4.2 Slot 4



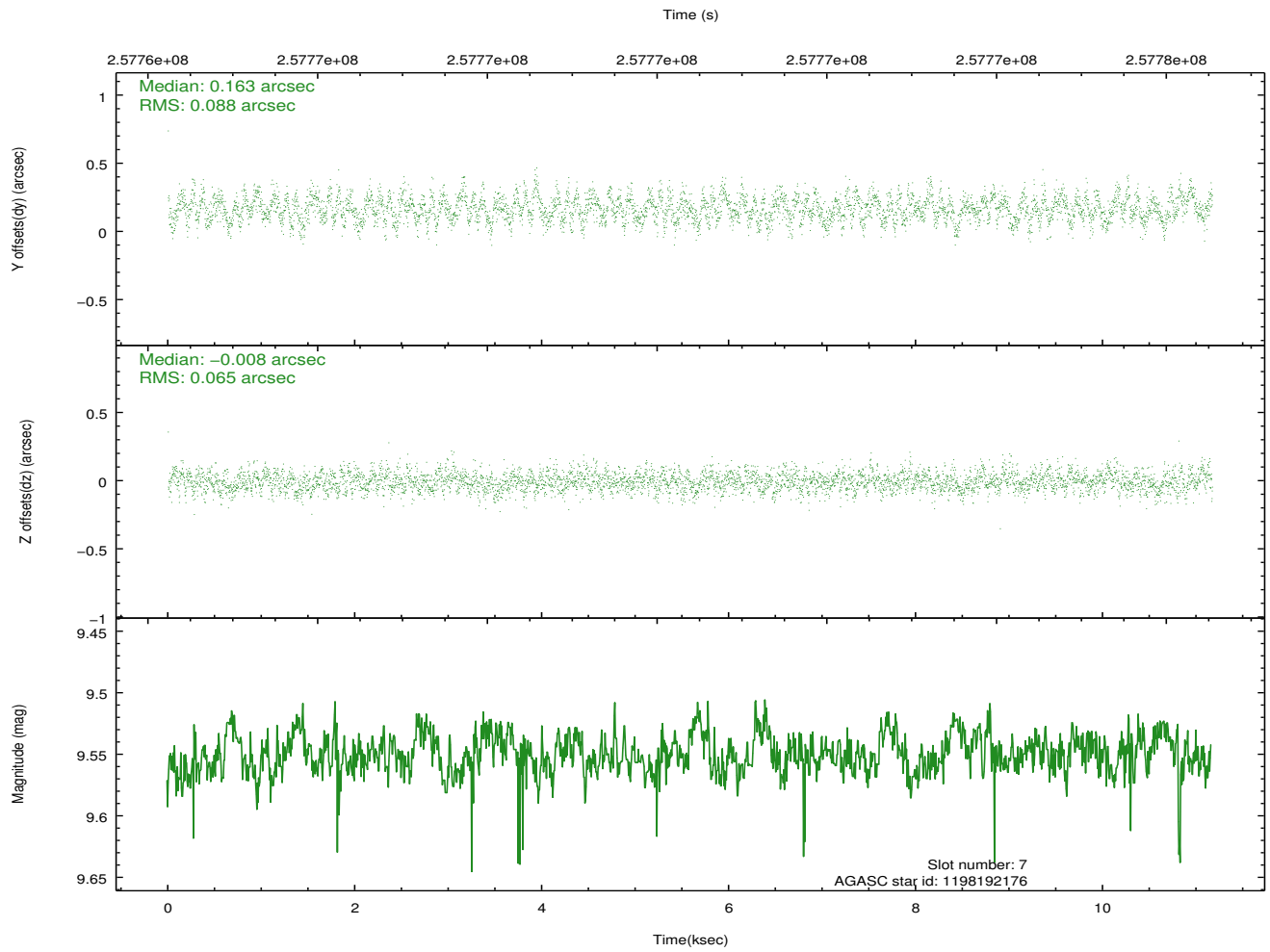
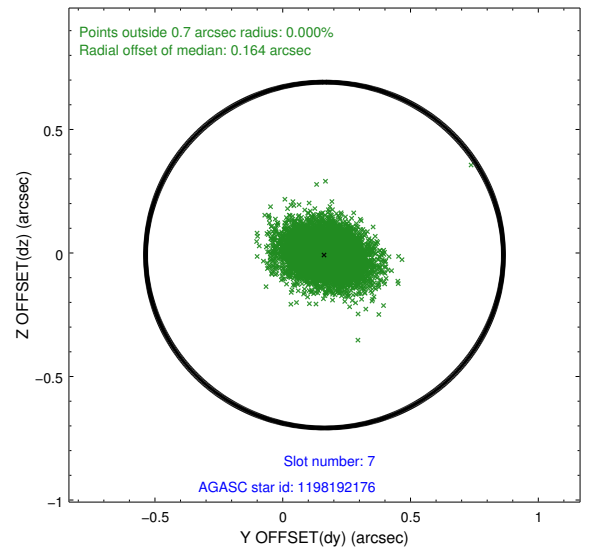
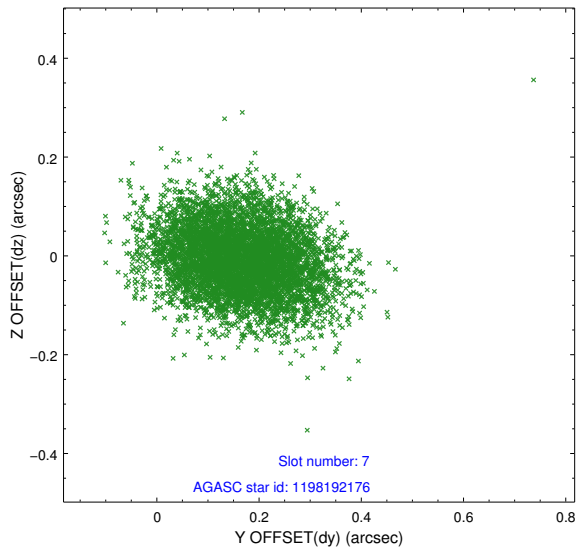
2.4.3 Slot 5



2.4.4 Slot 6

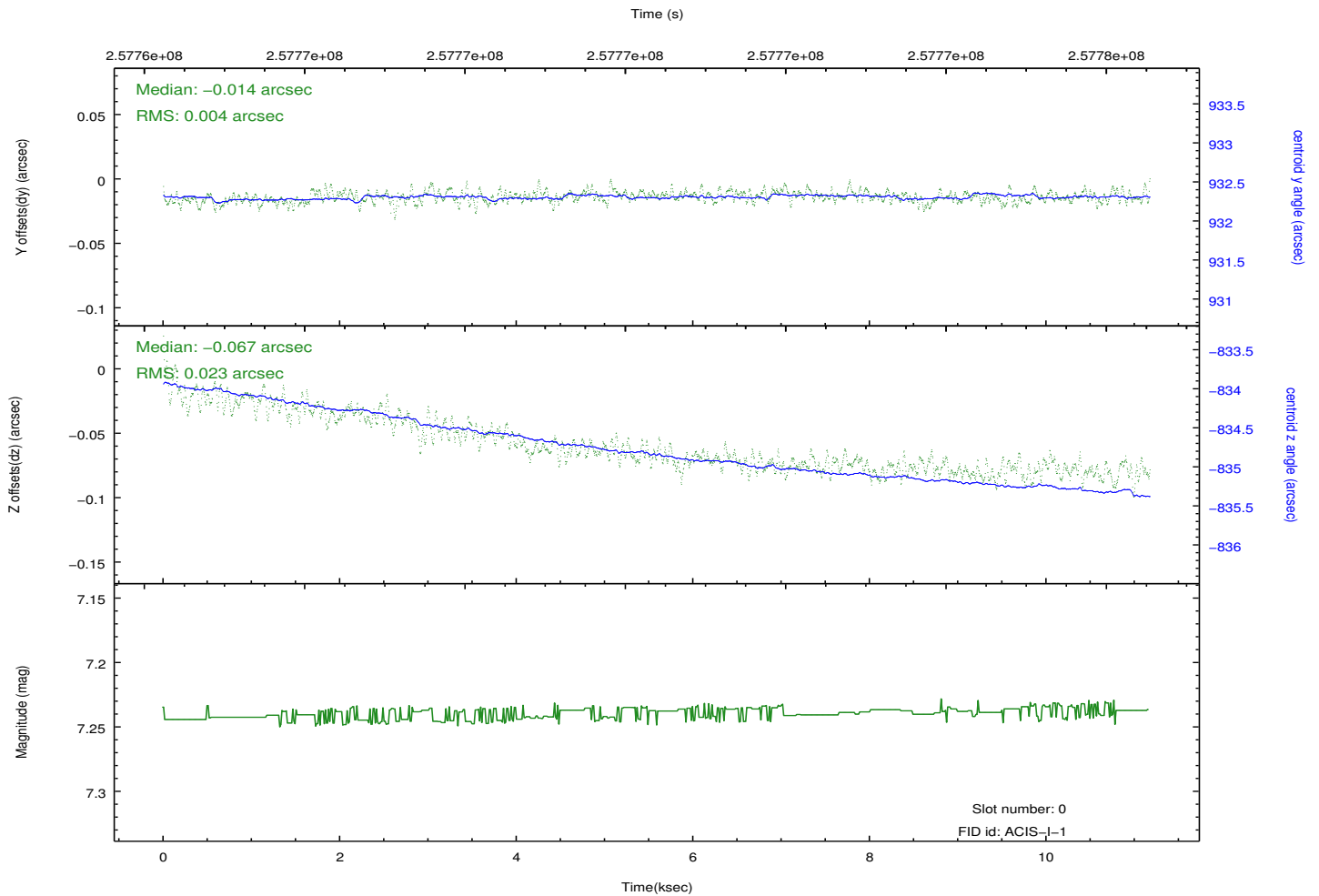
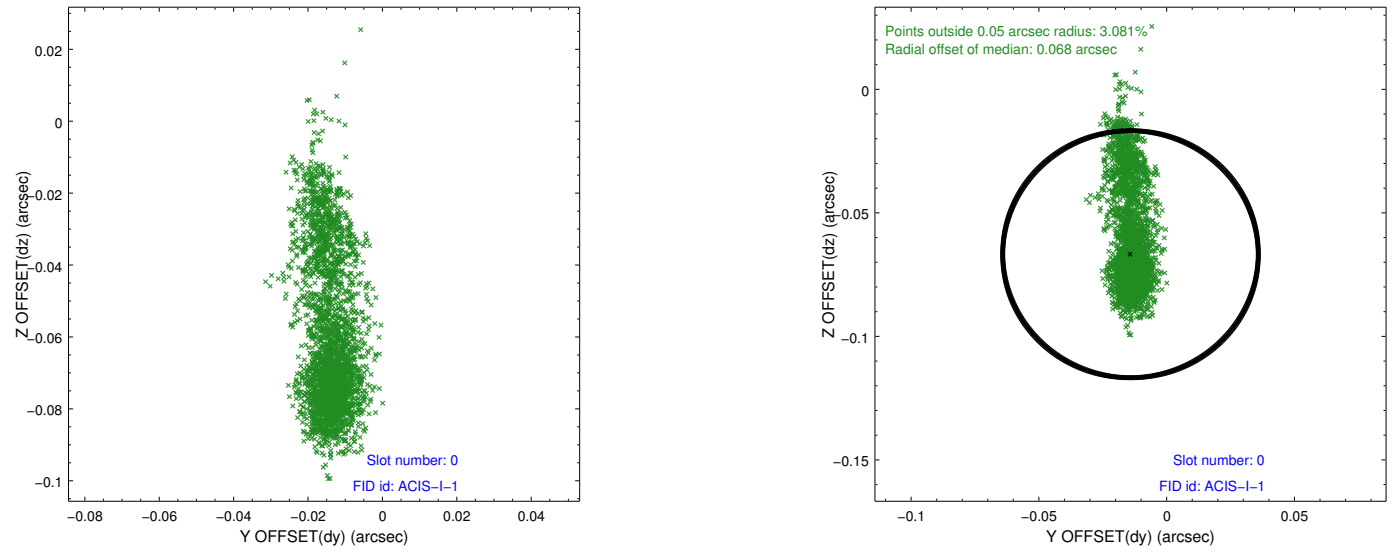


2.4.5 Slot 7

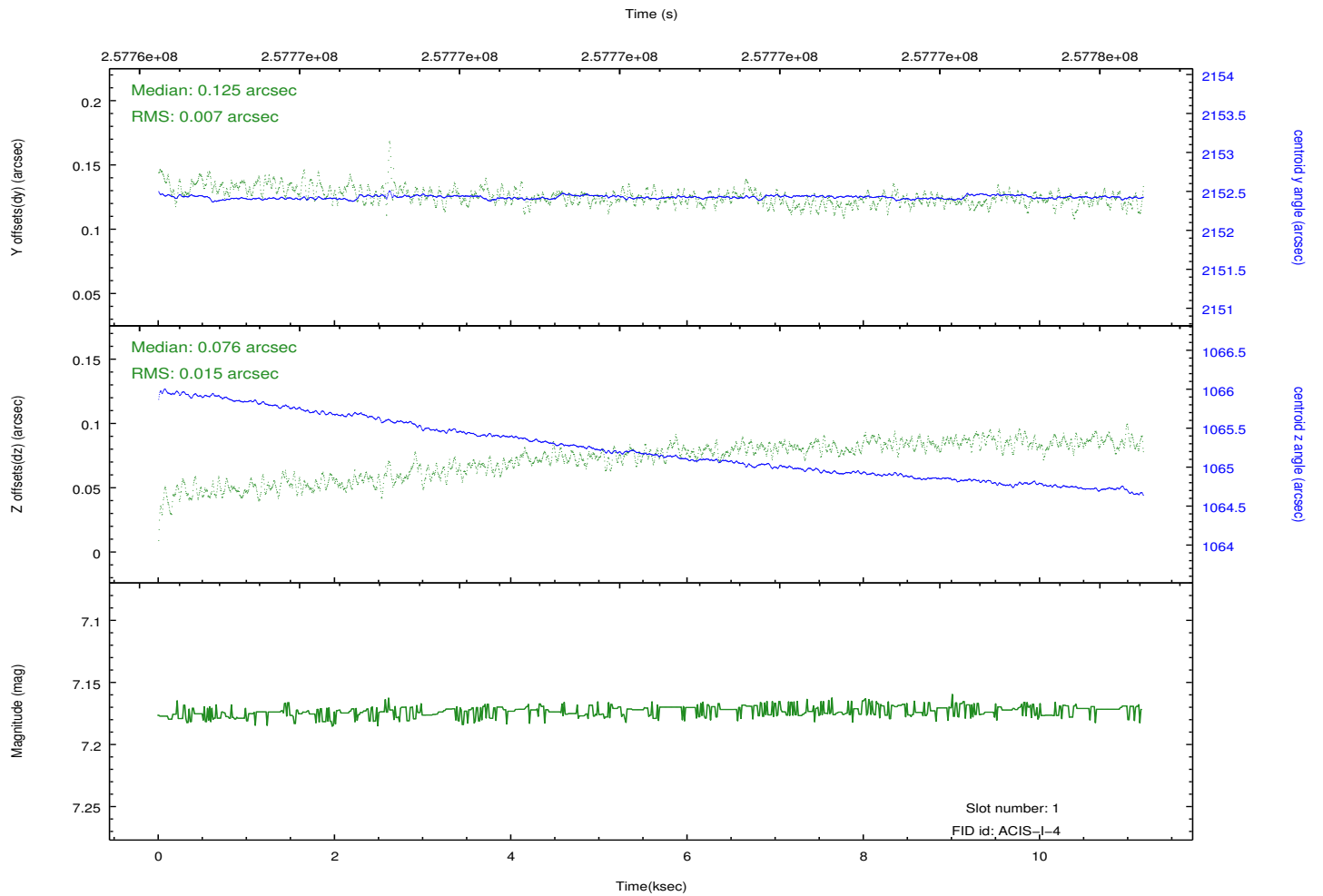
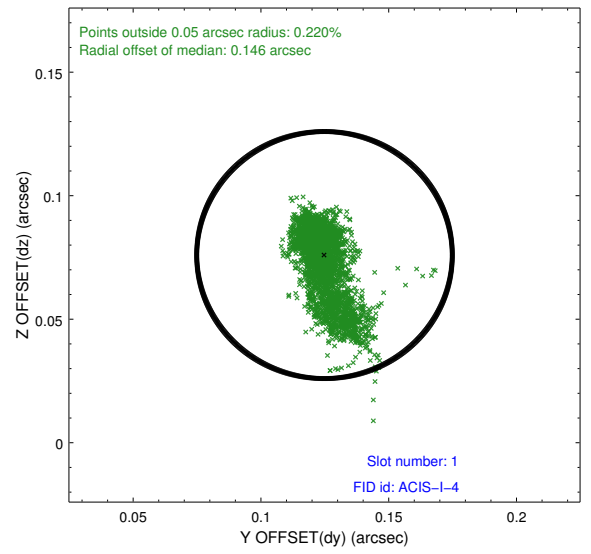
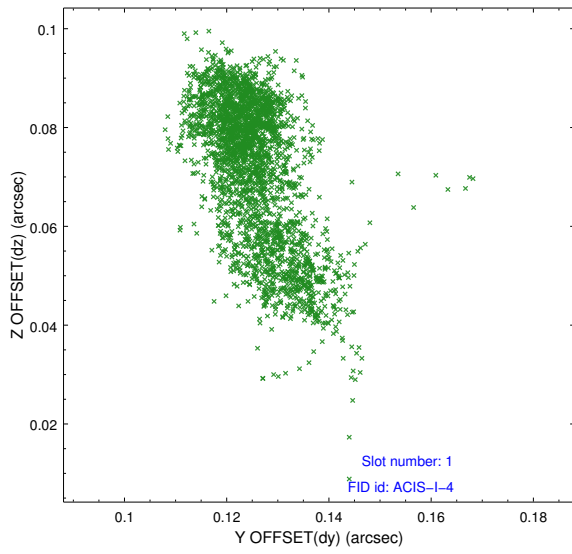


2.5 FID Slots

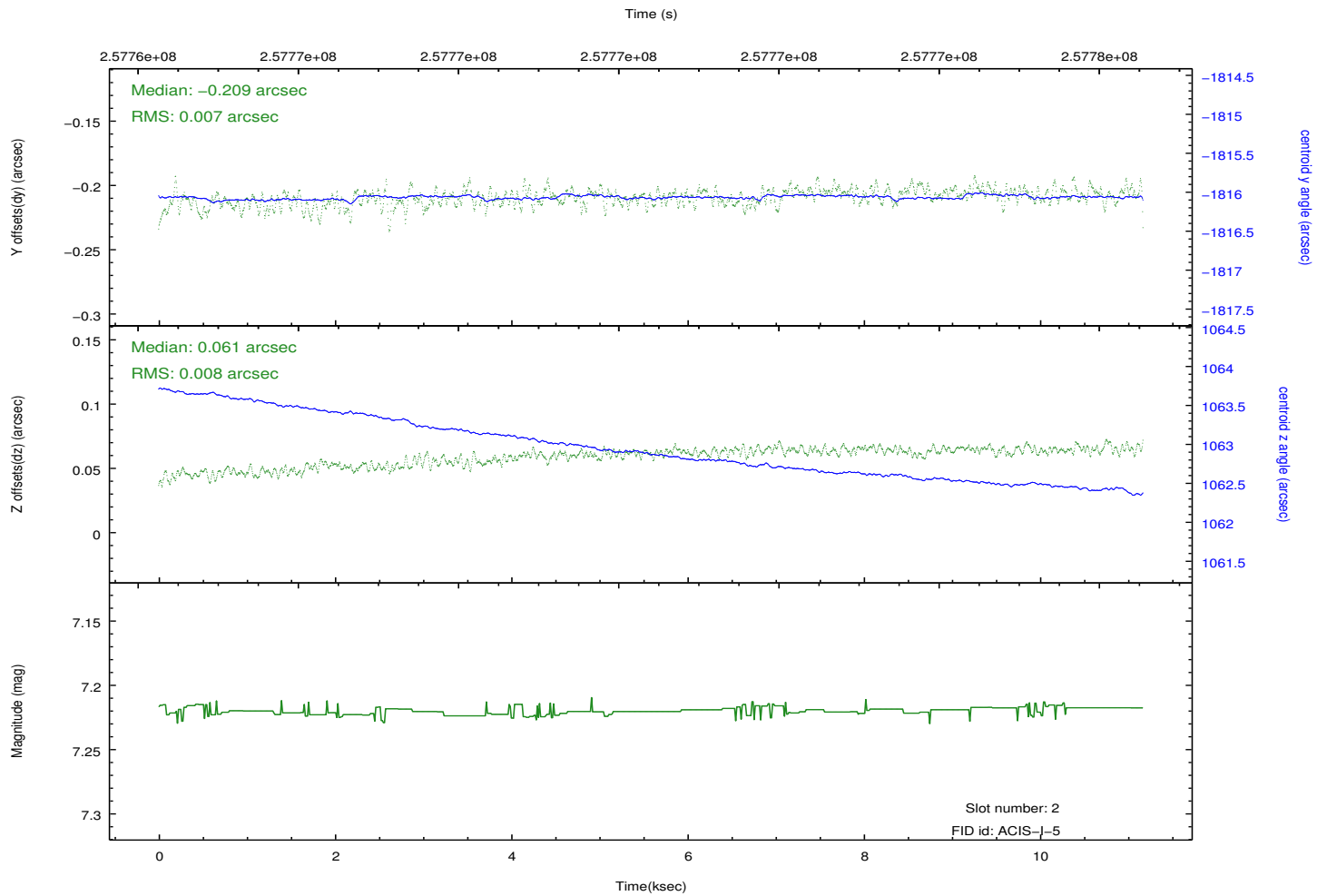
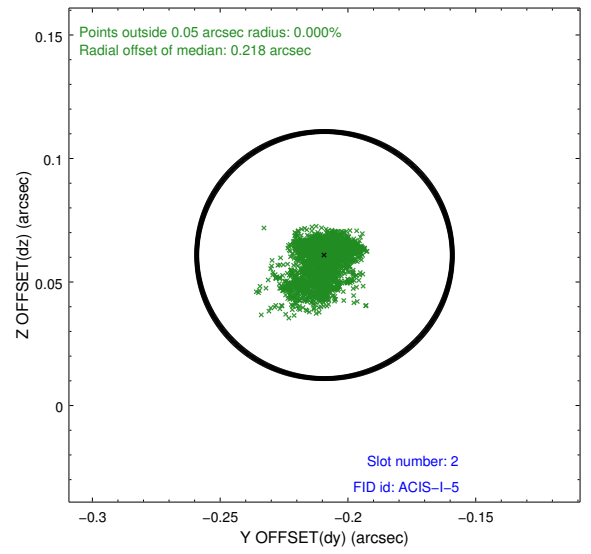
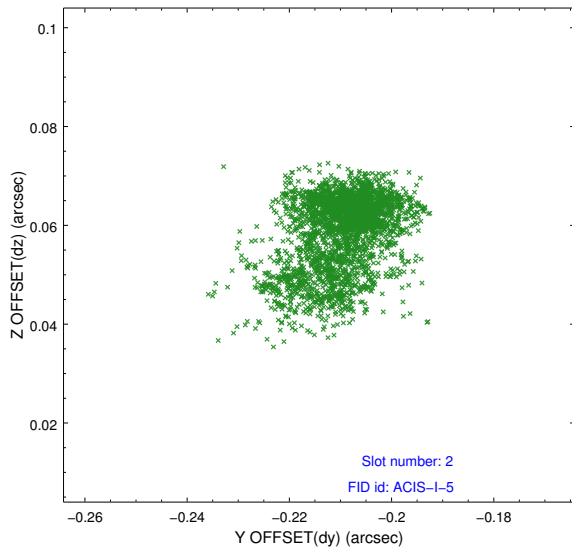
2.5.1 Slot 0



2.5.2 Slot 1



2.5.3 Slot 2



A Summary

A.1 Status

V&V Scientist	Jen Lauer
V&V Date (YYYY-MM-DD)	2012.03.28
V&V Edition	1
V&V Disposition and Status	OK
V&V Charge Time	9.94879996

A.2 Comments