

V&V Reference Report

L2 ASCDS Version : 8.5.1.1

Observation 59666 - L2 Version 3
Chandra X-Ray Center

L2 Processing Date : Dec 23 2012

Contents

1	Front	2
2	OBI	3
2.1	OBI	3
2.1.1	Images	3
2.1.2	Bias	3
2.1.3	Parameters	4
2.1.4	Events	4
2.2	Compared Parameters	5
2.3	Star Slots	6
2.4	FID Slots	6
A	Summary	7
A.1	Status	7
A.2	Comments	7

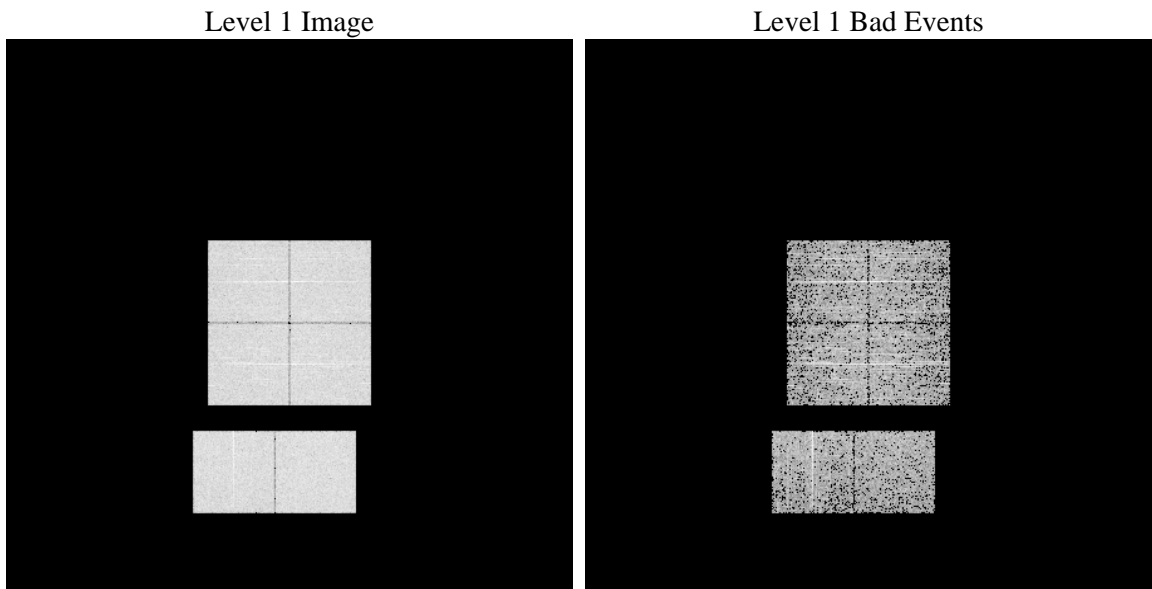
1 Front

seq_num	 	Sequence number
obs_id	59666	Observation id
title	ACIS-012367 diagnostics	Proposal title
observer	CHANDRA engineering request/realtime commanding	Principal investig
object	 	Source name
dtycycle	0	
cycle	P	events from which exps? Prim/Second/Both
ra_targ	0.0	Observer's specified target RA [deg]
dec_targ	0.0	Observer's specified target Dec [deg]
ra_nom	253.99016807751	Nominal RA [deg]
dec_nom	-24.973683521334	Nominal Dec [deg]
roll_nom	78.838422738199	Nominal Roll [deg]
revision	3	Processing version of data
ontime	2220.7634477317	Sum of GTIs [s]
livetime	2192.6428037733	Livetime [s]
ontime0	2155.9027315378	Sum of GTIs [s]
ontime1	2155.8616915643	Sum of GTIs [s]
ontime2	2129.8926697671	Sum of GTIs [s]
ontime3	2159.2212762535	Sum of GTIs [s]
ontime6	2220.5992877483	Sum of GTIs [s]
ontime7	2220.7634477317	Sum of GTIs [s]
l2events	316823	Number of level 2 events

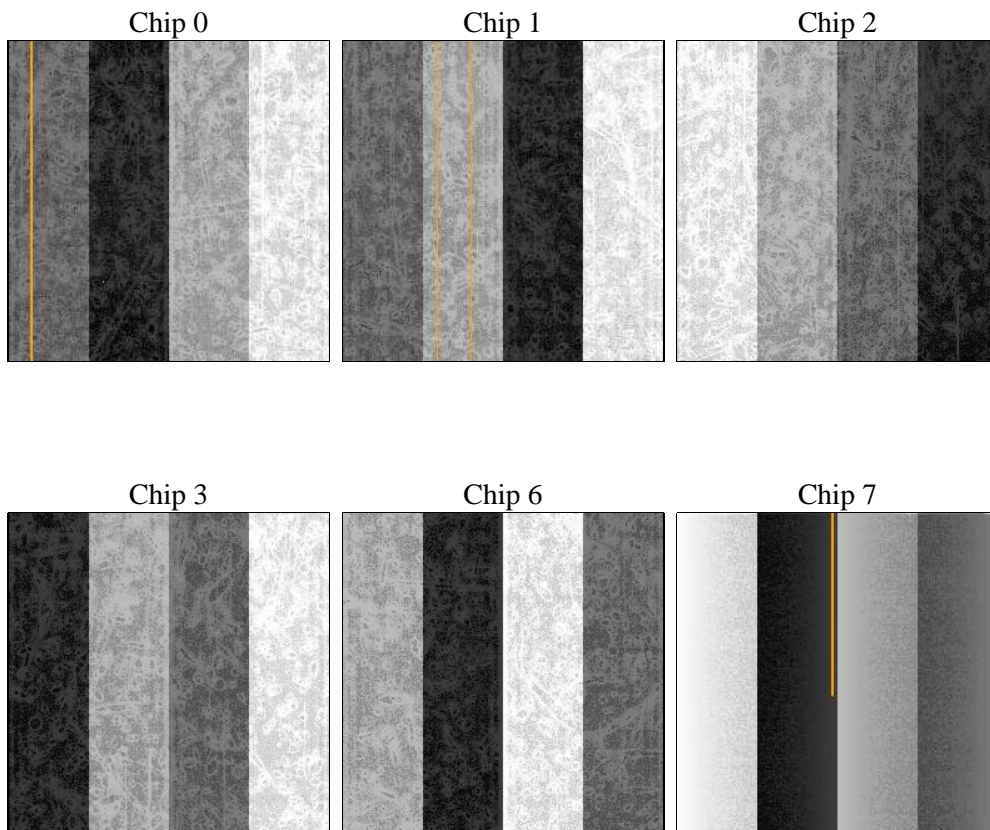
2 OBI

2.1 OBI

2.1.1 Images



2.1.2 Bias



2.1.3 Parameters

obi_num	0	Obi number	sched_exp_time	0.0	[s] Scheduled observation exposure time
ascdsver	8.5.1.1	Processing system revision	ontime	2220.7634477317	Sum of GTIs [s]
caldbver	4.5.5	 	ontime0	2155.9027315378	Sum of GTIs [s]
date	2012-12-23T08:19:51	Date and time of file creation	ontime1	2155.8616915643	Sum of GTIs [s]
			ontime2	2129.8926697671	Sum of GTIs [s]
revision	3	Processing version of data	ontime3	2159.2212762535	Sum of GTIs [s]
			ontime6	2220.5992877483	Sum of GTIs [s]
			ontime7	2220.7634477317	Sum of GTIs [s]
			l1events	417666	Number of level 1 events

2.1.4 Events

	ccd 0	ccd 1	ccd 2	ccd 3	ccd 6	ccd 7
level 1 events	67257	67607	68218	69383	71761	73440
rejected events	13932	13857	15087	15015	14318	12444
rejected %	20%	20%	22%	21%	19%	16%

	ccd 0	ccd 1	ccd 2	ccd 3	ccd 6	ccd 7
grade 0 events	29307	29322	29778	30383	30861	14805
	43%	43%	43%	43%	43%	20%
grade 1 events	167	132	187	171	175	42
	0%	0%	0%	0%	0%	0%
grade 2 events	9341	9761	8866	9299	9980	13568
	13%	14%	12%	13%	13%	18%
grade 3 events	3412	3427	3548	3656	3654	6004
	5%	5%	5%	5%	5%	8%
grade 4 events	3445	3399	3516	3570	3658	5926
	5%	5%	5%	5%	5%	8%
grade 5 events	848	869	878	948	959	2174
	1%	1%	1%	1%	1%	2%
grade 6 events	7883	7928	7499	7544	9384	20772
	11%	11%	10%	10%	13%	28%
grade 7 events	12854	12769	13946	13812	13090	10149
	19%	18%	20%	19%	18%	13%

2.2 Compared Parameters

Parameter	Planned	Actual	Parameter	Planned	Actual
Instrument	ACIS	ACIS	Obspar format version number	7	7
Detector	ACIS-012367	ACIS-012367	Obspar file type	PREDICTED	ACTUAL
Grating	NONE	NONE	Obspar update status	NONE	UPDATED
Data mode	FAINT	FAINT	On-chip summing requested	N	N
Observation mode	SECONDARY	SECONDARY	Subarray requested	NONE	NONE
[deg] Pointing RA	0	253.9901680775079	Alternating exposures requested	N	N
[deg] Pointing Dec	0	-24.97368352133395	[s] Primary exposure time	3.2	3.2
[deg] Pointing Roll	0.0	78.83842273819883			
[mm] SIM focus pos	-0.782348	-0.6828225247311905			
[mm] SIM defocus	0	0.8505141146731063			
[mm] SIM translation stage pos	-233.592463	250.4635187648994			
[mm] SIM translation stage offset	0	-0.007540371344731511			
[s] Observation start time (MET)	232112468.043935	232112467.01893			
Observation start date	2005-05-10T11:41:08	2005-05-10T11:41:07			
[s] Observation end time (MET)	232118287.994207	232118286.96919			
Observation end date	2005-05-10T13:18:08	2005-05-10T13:18:06			
Read mode	TIMED	TIMED			

2.3 Star Slots

2.4 FID Slots

A Summary

A.1 Status

V&V Scientist	Jen Lauer
V&V Date (YYYY-MM-DD)	2013.01.15
V&V Edition	1
V&V Disposition and Status	OK
V&V Charge Time	2.2207634477317

A.2 Comments