

V&V Reference Report

L2 ASCDS Version : 8.5.1

Observation 6096 - L2 Version 3
Chandra X-Ray Center

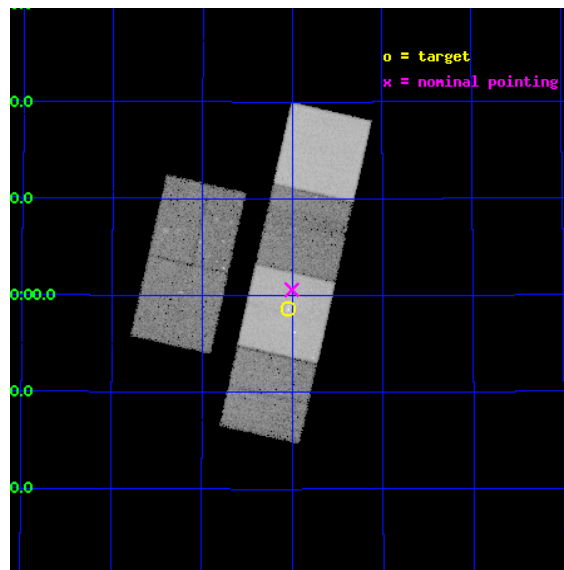
L2 Processing Date : Dec 16 2012

Contents

1	Front	2
2	OBI	3
2.1	OBI	3
2.1.1	Images	3
2.1.2	Bias	3
2.1.3	Parameters	4
2.1.4	Events	4
2.2	Compared Parameters	5
2.3	Aspect	6
2.4	Star Slots	9
2.4.1	Slot 3	9
2.4.2	Slot 4	10
2.4.3	Slot 5	11
2.4.4	Slot 6	12
2.4.5	Slot 7	13
2.5	FID Slots	14
2.5.1	Slot 0	14
2.5.2	Slot 1	15
2.5.3	Slot 2	16
A	Summary	17
A.1	Status	17
A.2	Comments	17

1 Front

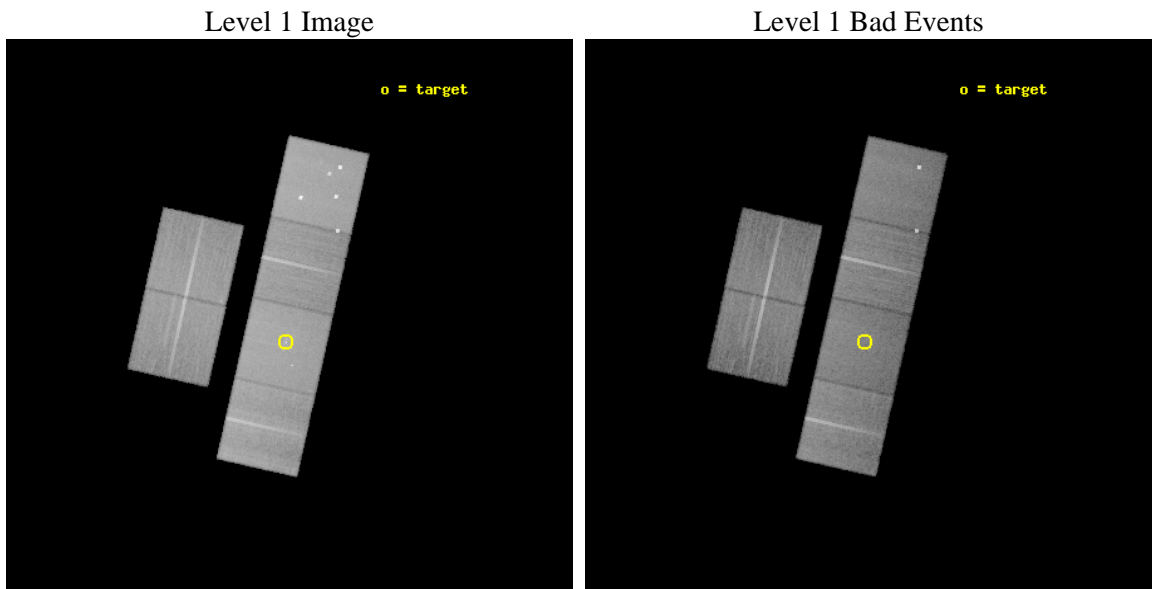
seq_num	600474	Sequence number
obs_id	6096	Observation id
title	X-raying the Massive Sb Galaxy NGC 2841: a Test of Disk Galaxy formation Theories	Proposal title
observer	Prof. Q. Daniel Wang	Principal investigator
object	NGC 2841	Source name
dtcycle	0	
cycle	P	events from which exps? Prim/Second/Both
ra_targ	140.510833	Observer's specified target RA [deg]
dec_targ	50.976528	Observer's specified target Dec [deg]
ra_nom	140.50173880218	Nominal RA [deg]
dec_nom	51.009940332889	Nominal Dec [deg]
roll_nom	102.71999617386	Nominal Roll [deg]
revision	3	Processing version of data
ontime	28579.199893534	Sum of GTIs [s]
livetime	28217.312856154	Livetime [s]
ontime2	28572.717912972	Sum of GTIs [s]
ontime3	28579.199893534	Sum of GTIs [s]
ontime5	28579.199893534	Sum of GTIs [s]
ontime6	28579.199893534	Sum of GTIs [s]
ontime7	28579.199893534	Sum of GTIs [s]
ontime8	28579.199893534	Sum of GTIs [s]
l2events	358250	Number of level 2 events



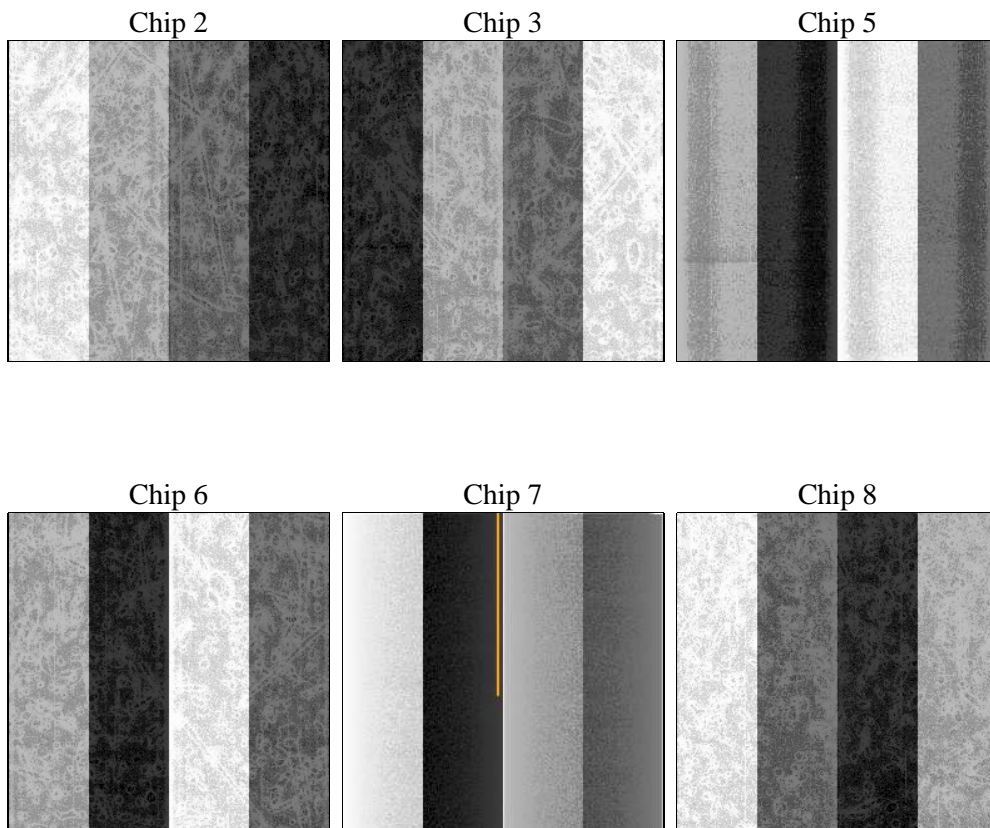
2 OBI

2.1 OBI

2.1.1 Images



2.1.2 Bias



2.1.3 Parameters

obi_num	1	Obi number	sched_exp_time	28400.000000	[s] Scheduled observation exposure time
ascdsver	8.5.1	Processing system revision	ontime	28579.199893534	Sum of GTIs [s]
caldbver	4.5.5	 	ontime2	28572.717912972	Sum of GTIs [s]
date	2012-12-14T21:01:06	Date and time of file creation	ontime3	28579.199893534	Sum of GTIs [s]
revision	3	Processing version of data	ontime5	28579.199893534	Sum of GTIs [s]
			ontime6	28579.199893534	Sum of GTIs [s]
			ontime7	28579.199893534	Sum of GTIs [s]
			ontime8	28579.199893534	Sum of GTIs [s]
			l1events	1666105	Number of level 1 events

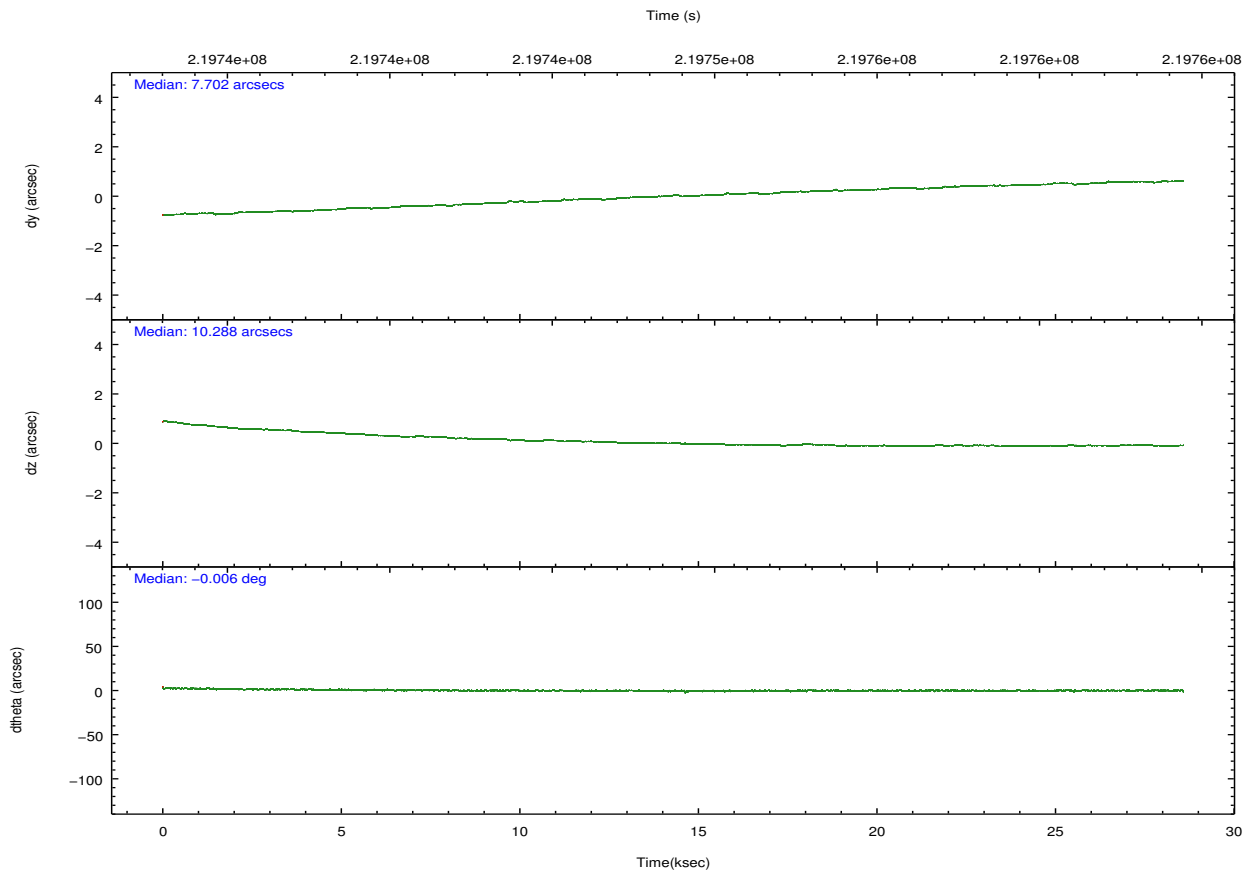
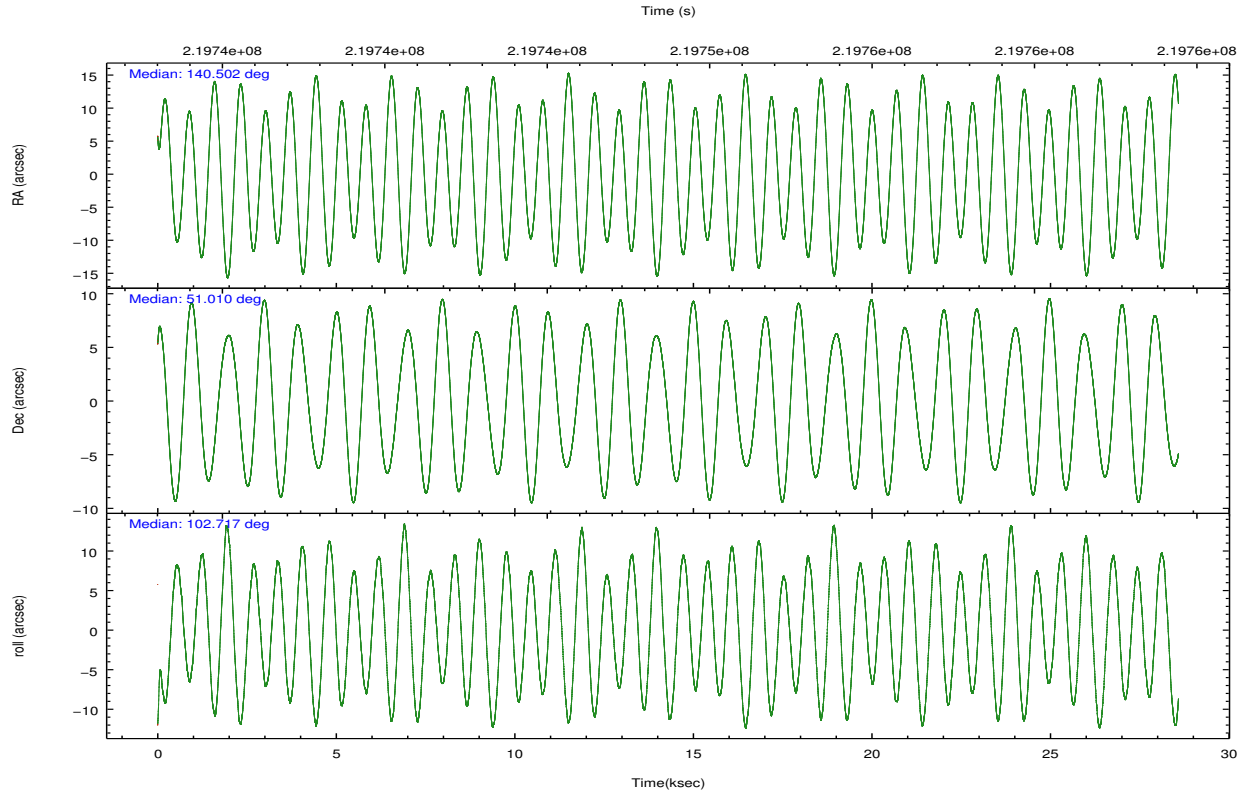
2.1.4 Events

	ccd 2	ccd 3	ccd 5	ccd 6	ccd 7	ccd 8		ccd 2	ccd 3	ccd 5	ccd 6	ccd 7	ccd 8
level 1 events	235303	222879	365364	236248	314463	291848	grade 0 events	12900	11052	28864	10247	12723	19393
rejected events	208313	198221	199053	210445	187807	232334		5%	4%	7%	4%	4%	6%
rejected %	88%	88%	54%	89%	59%	79%	grade 1 events	144	152	2137	90	285	194
								0%	0%	0%	0%	0%	0%
							grade 2 events	5572	4829	48134	5737	25974	13763
								2%	2%	13%	2%	8%	4%
							grade 3 events	2566	2673	6581	2563	11715	6442
								1%	1%	1%	1%	3%	2%
							grade 4 events	2551	2614	5872	2660	11425	5950
								1%	1%	1%	1%	3%	2%
							grade 5 events	8986	10185	29342	10496	29529	13711
								3%	4%	8%	4%	9%	4%
							grade 6 events	4482	4503	82929	5611	69737	16298
								1%	2%	22%	2%	22%	5%
							grade 7 events	198102	186871	161505	198844	153075	216097
								84%	83%	44%	84%	48%	74%

2.2 Compared Parameters

Parameter	Planned	Actual	Parameter	Planned	Actual
Instrument	ACIS	ACIS	Obspar format version number	7	7
Detector	ACIS-235678	ACIS-235678	Obspar file type	PREDICTED	ACTUAL
Grating	NONE	NONE	Obspar update status	NONE	UPDATED
Data mode	VFAINT	VFAINT	Number of optional ACIS chips dropped	0	0
Observation mode	POINTING	POINTING	On-chip summing requested	N	N
[deg] Pointing RA	140.531505	140.5017388021847	Subarray requested	NONE	NONE
[deg] Pointing Dec	50.990177	51.00994033288931	Alternating exposures requested	N	N
[deg] Pointing Roll	102.540240	102.7199961738574	[s] Primary exposure time	0.000000	3.2
[mm] SIM focus pos	-0.684267	-0.6828225247311905			
[mm] SIM defocus	0	0.001444936568705701			
[mm] SIM translation stage pos	-190.132523	-190.1425803651734			
[mm] SIM translation stage offset	0	0.01005778216563158			
[s] Observation start time (MET)	219734614.184000	219732988.98331			
Observation start date	2004-12-18T05:22:30	2004-12-18T04:56:28			
[s] Observation end time (MET)	219763014.184000	219764331.43472			
Observation end date	2004-12-18T13:15:50	2004-12-18T13:38:51			
Read mode	TIMED	TIMED			

2.3 Aspect

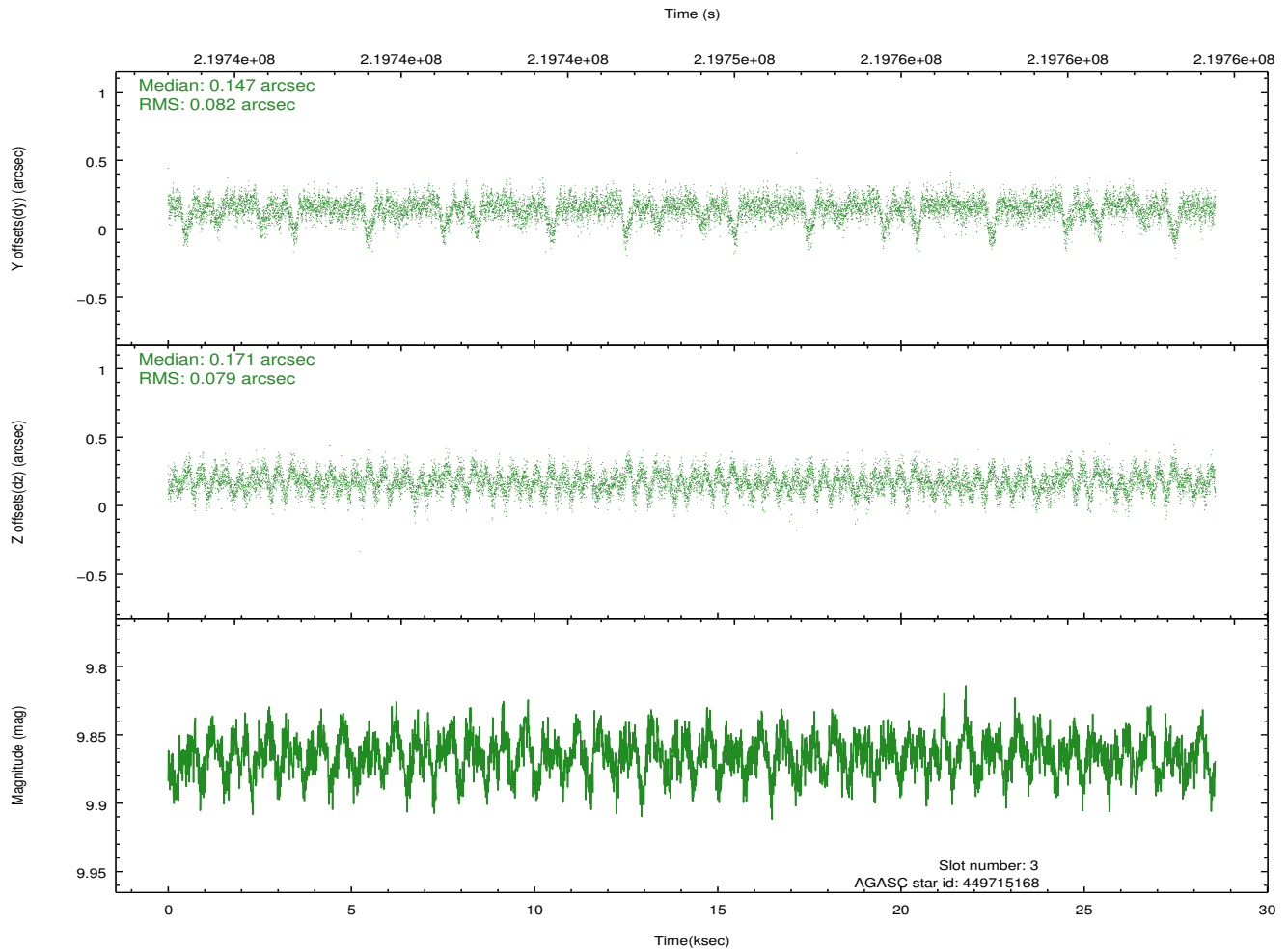
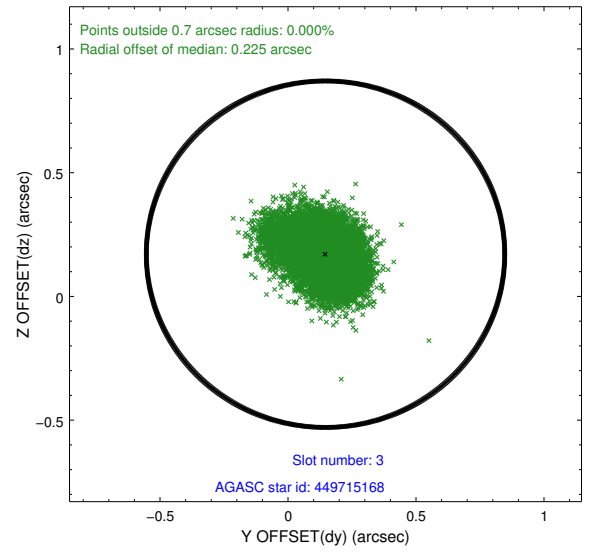
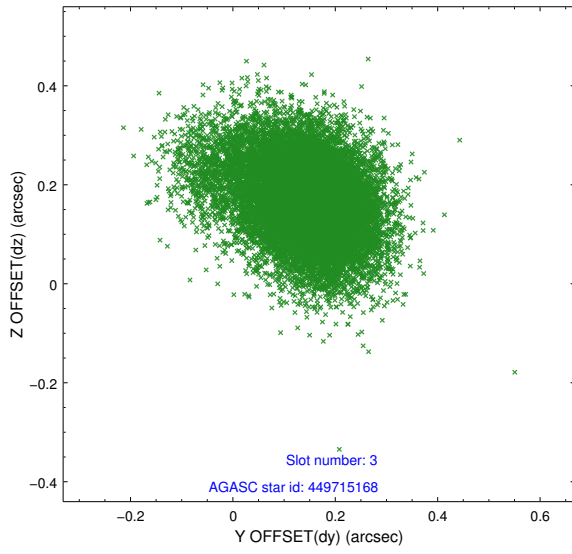


Slot Statistics

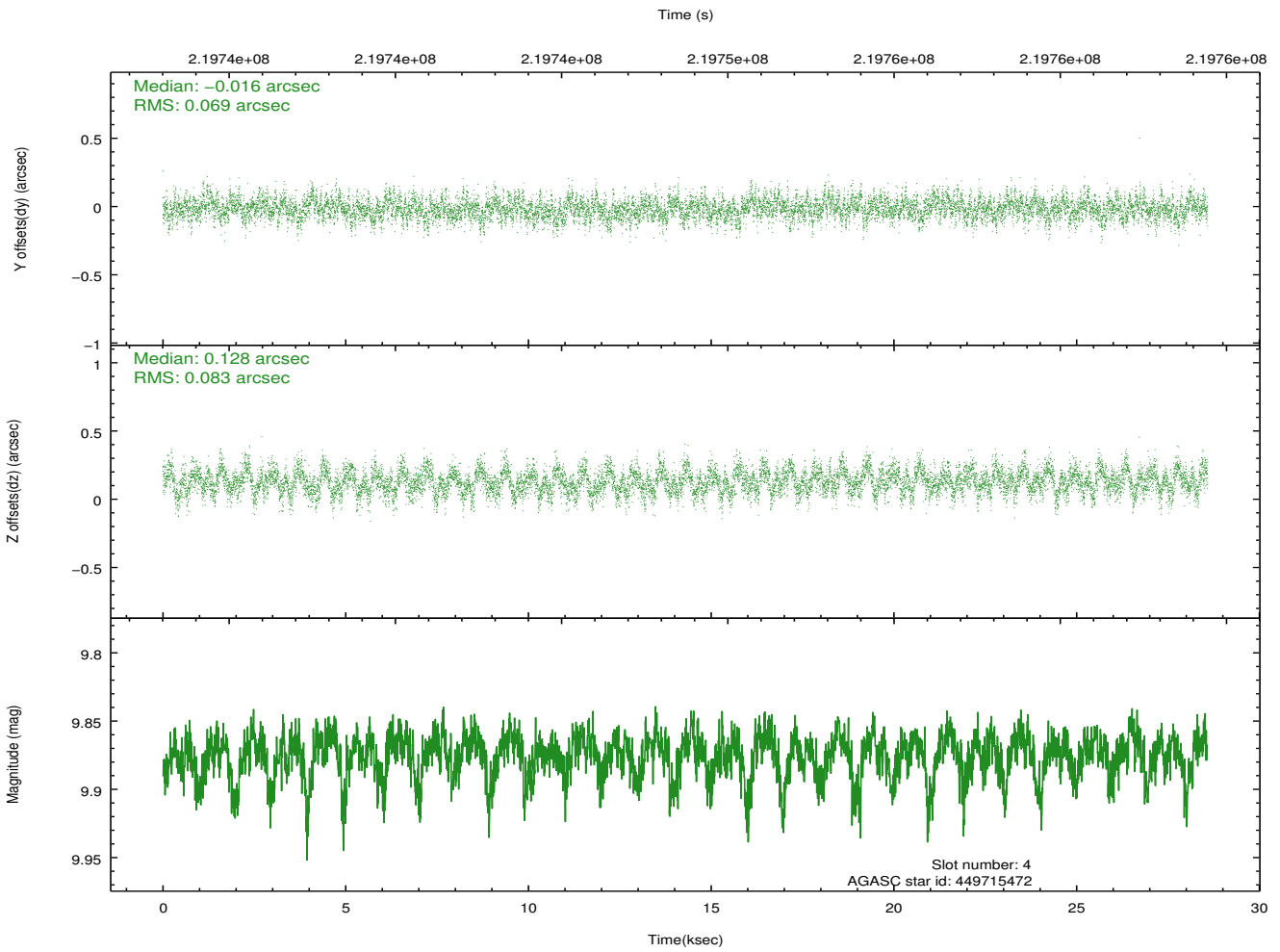
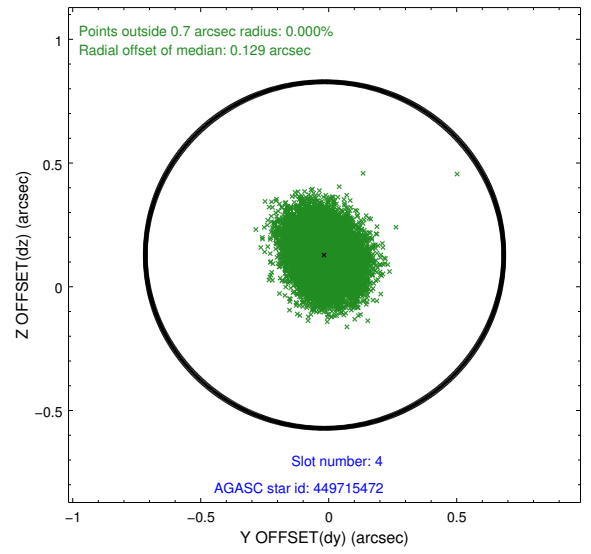
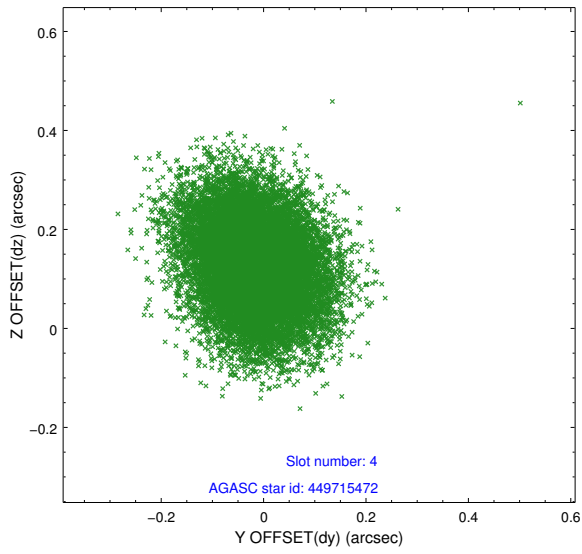
slot	status	id	mag	n_pts	med_dy	med_dz	dr1	dr2	ra	dec	mean_y	mean_z
0	FID	ACIS-S-1	7.19	6973	0.008	-0.044	0.015	0.027	0.000000	0.000000	935.61	-1727.28
1	FID	ACIS-S-4	7.21	6971	0.075	0.030	0.017	0.031	0.000000	0.000000	2153.11	176.88
2	FID	ACIS-S-5	7.24	6972	-0.112	0.026	0.018	0.030	0.000000	0.000000	-1813.29	170.52
3	GUIDE	449715168	9.87	13924	0.147	0.171	0.118	0.202	140.835455	50.626377	-1427.35	-393.13
4	GUIDE	449715472	9.87	13925	-0.016	0.128	0.115	0.188	141.428350	50.541895	-2008.49	-1654.91
5	GUIDE	449717256	9.80	13865	0.222	-0.077	0.150	0.250	141.368135	50.908832	-687.24	-1792.38
6	GUIDE	449717960	8.39	13941	-0.027	0.032	0.076	0.126	141.183337	50.913061	-585.71	-1385.13
7	GUIDE	449709864	7.88	13944	-0.319	-0.251	0.077	0.121	139.601682	51.402076	1913.59	1713.69

2.4 Star Slots

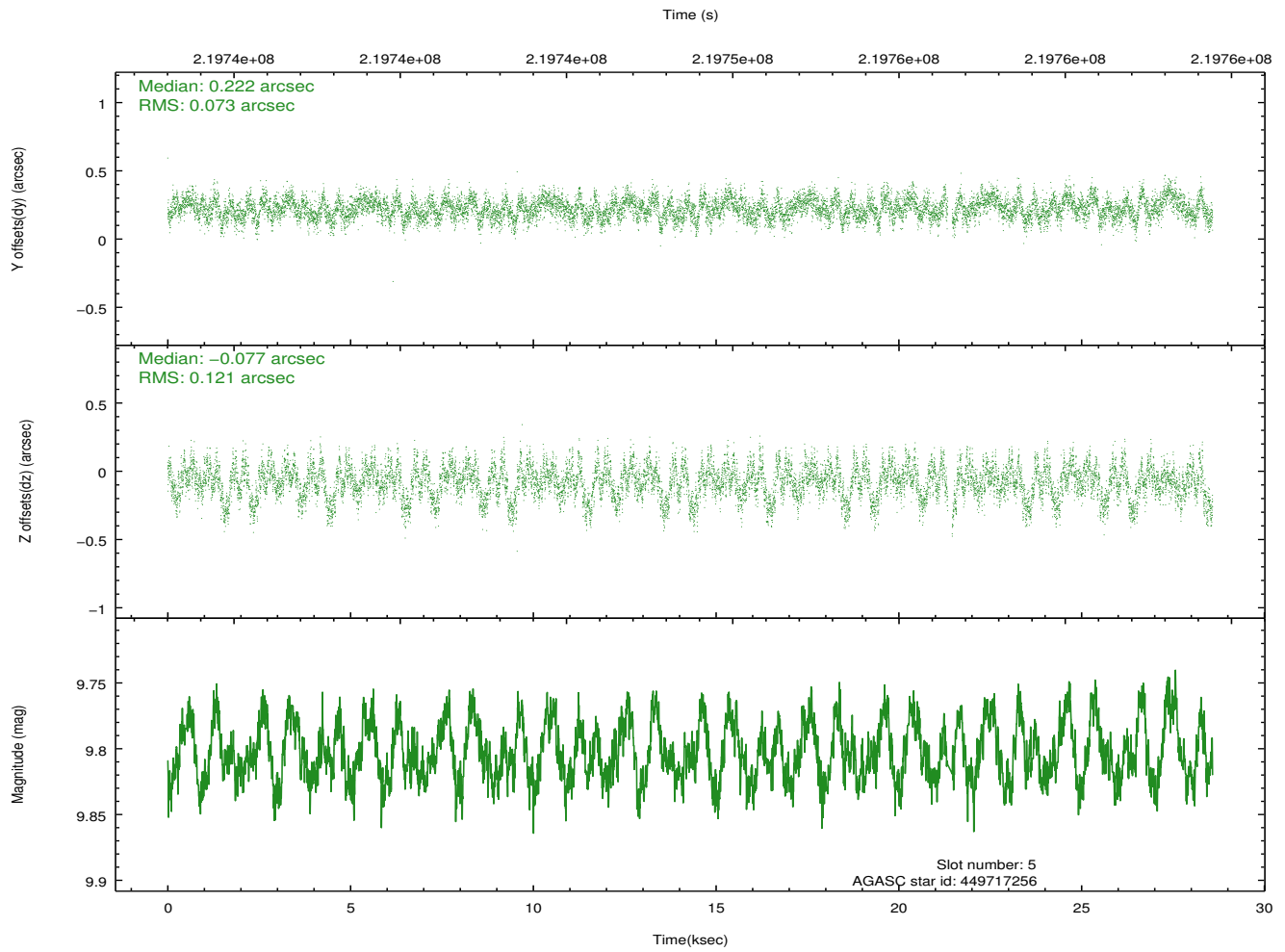
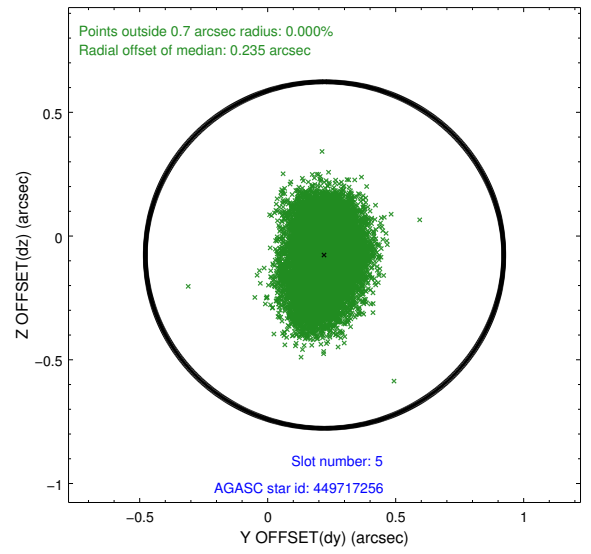
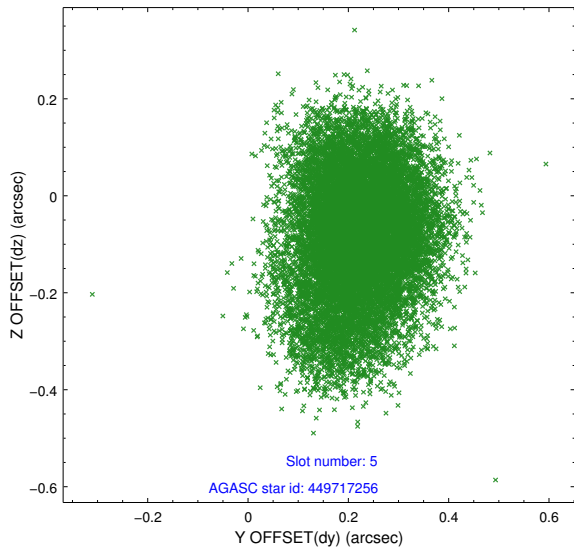
2.4.1 Slot 3



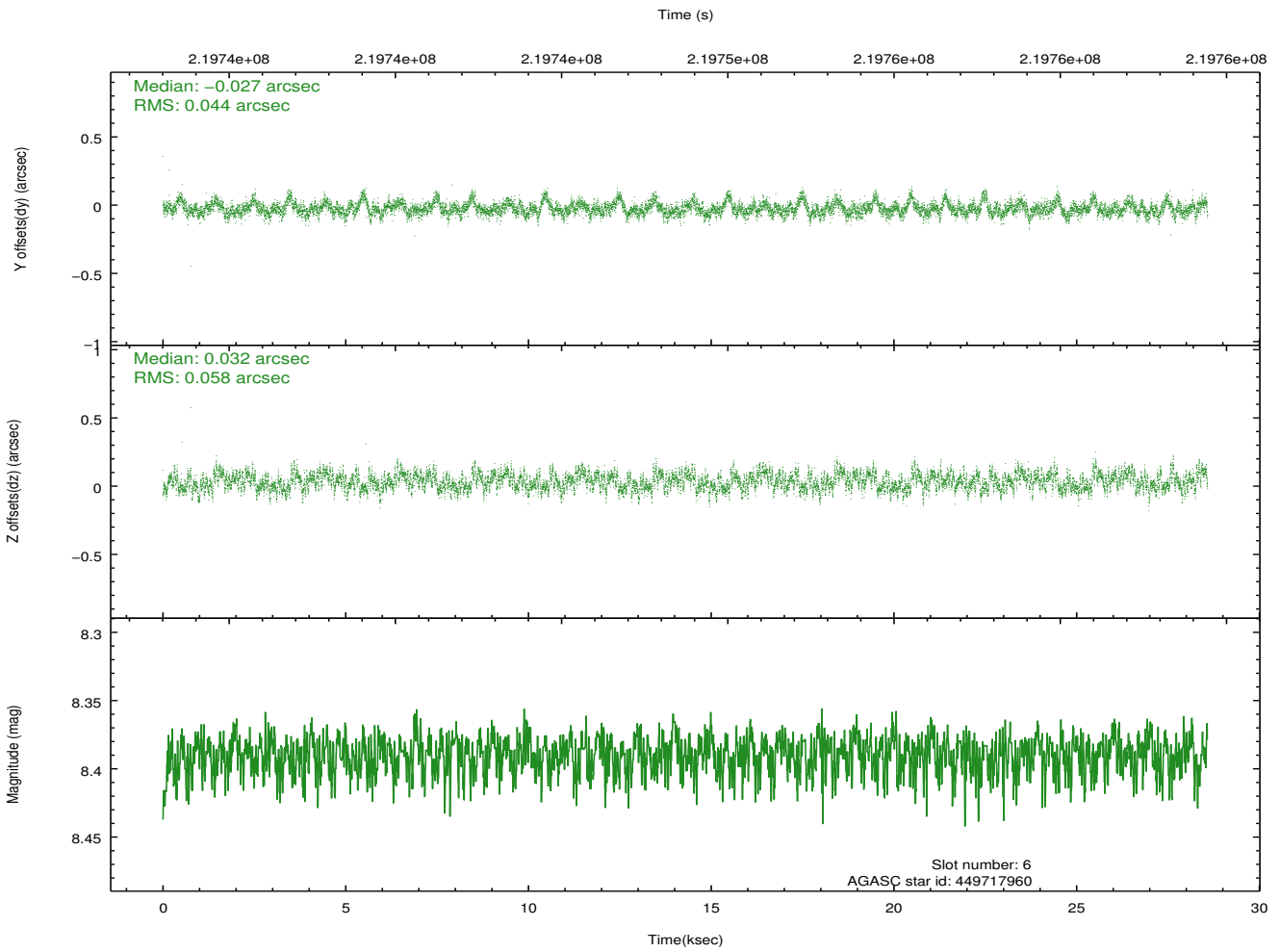
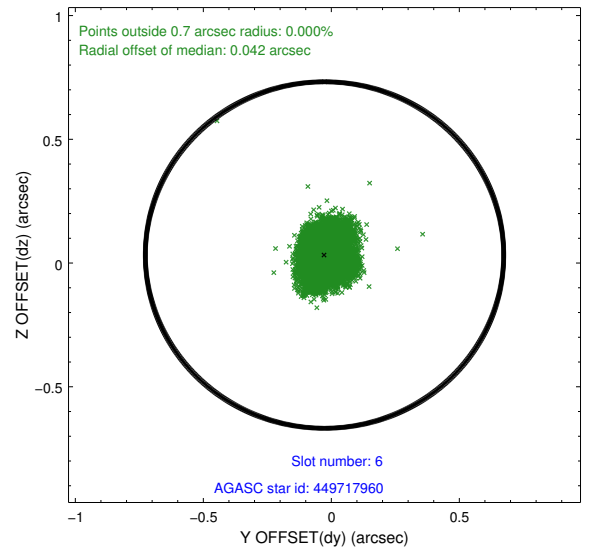
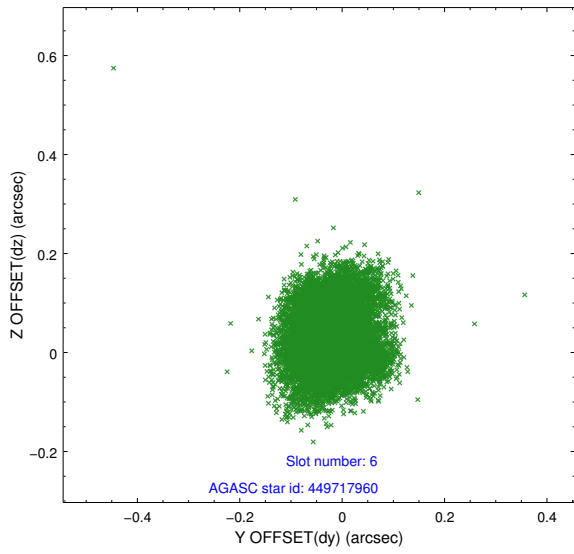
2.4.2 Slot 4



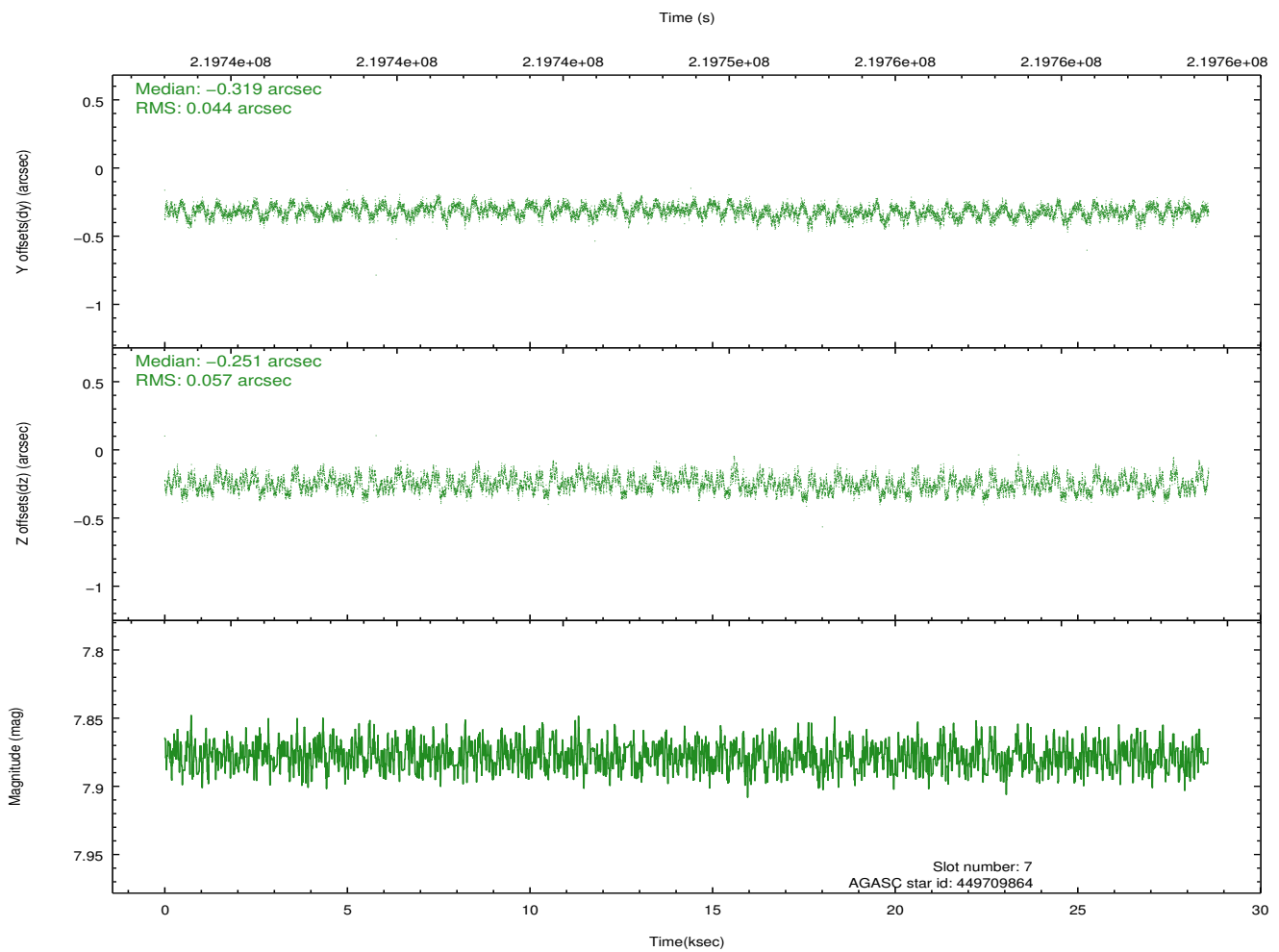
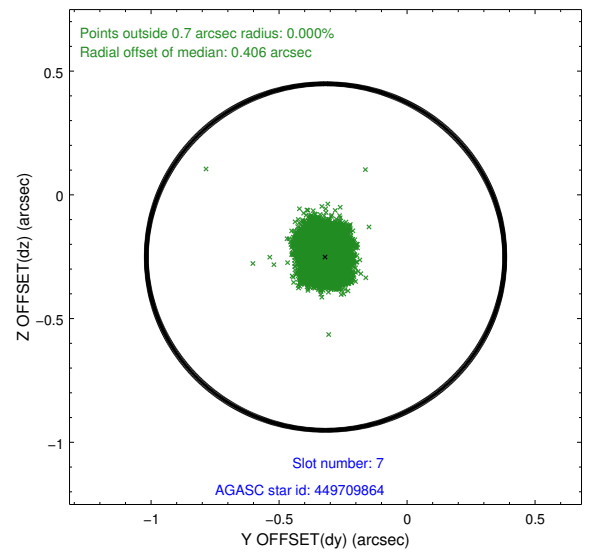
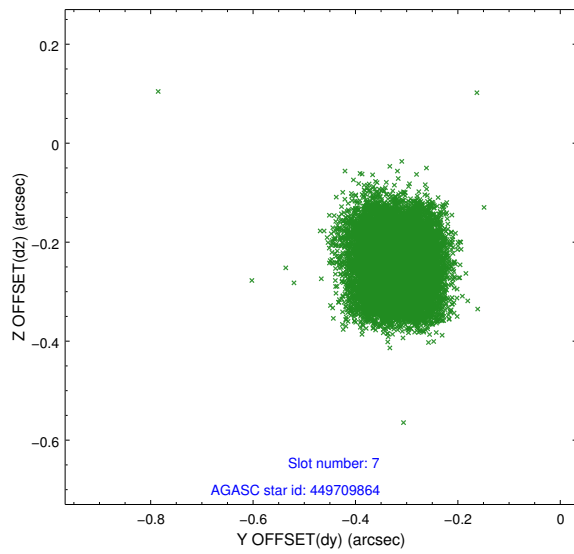
2.4.3 Slot 5



2.4.4 Slot 6

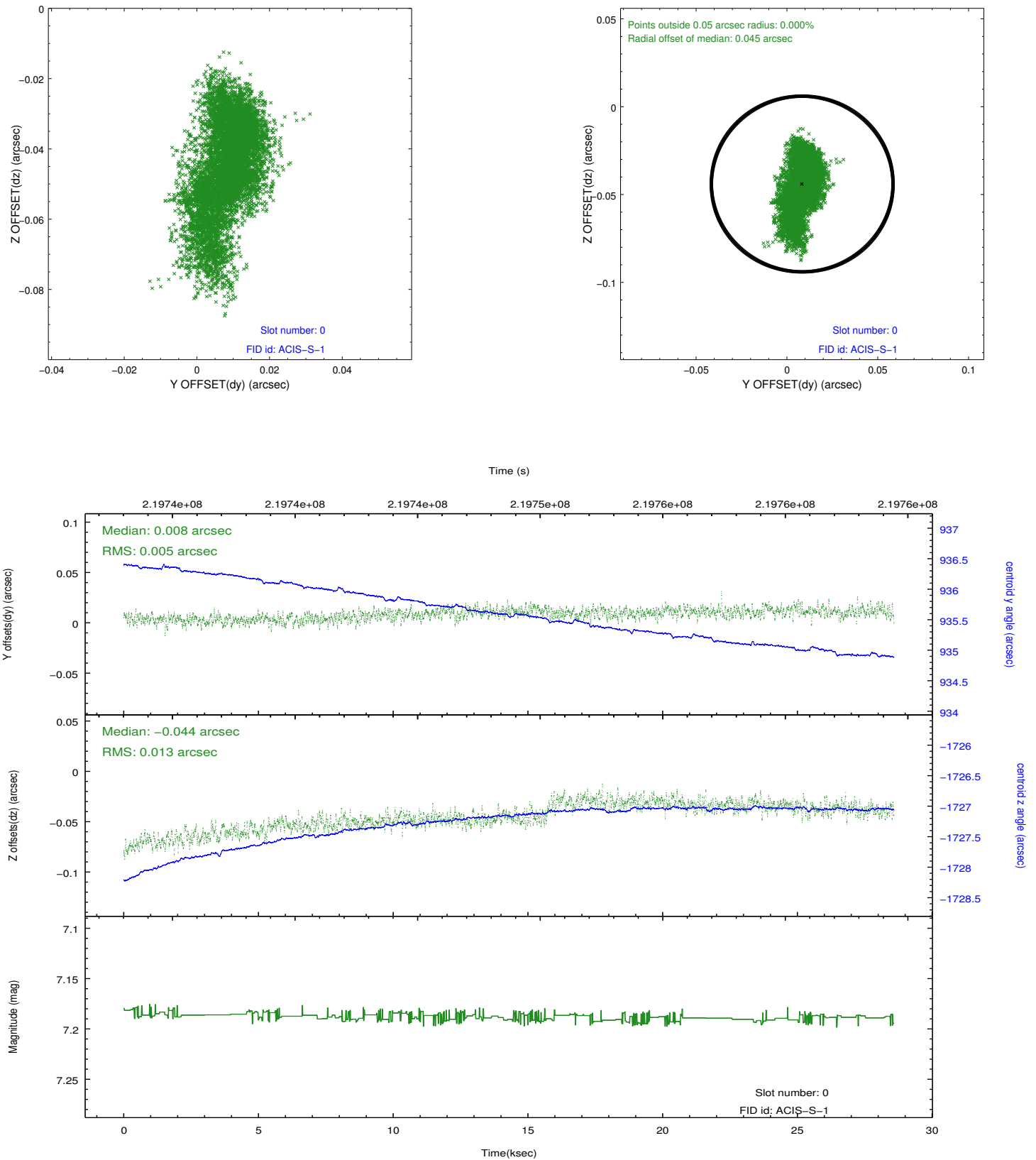


2.4.5 Slot 7

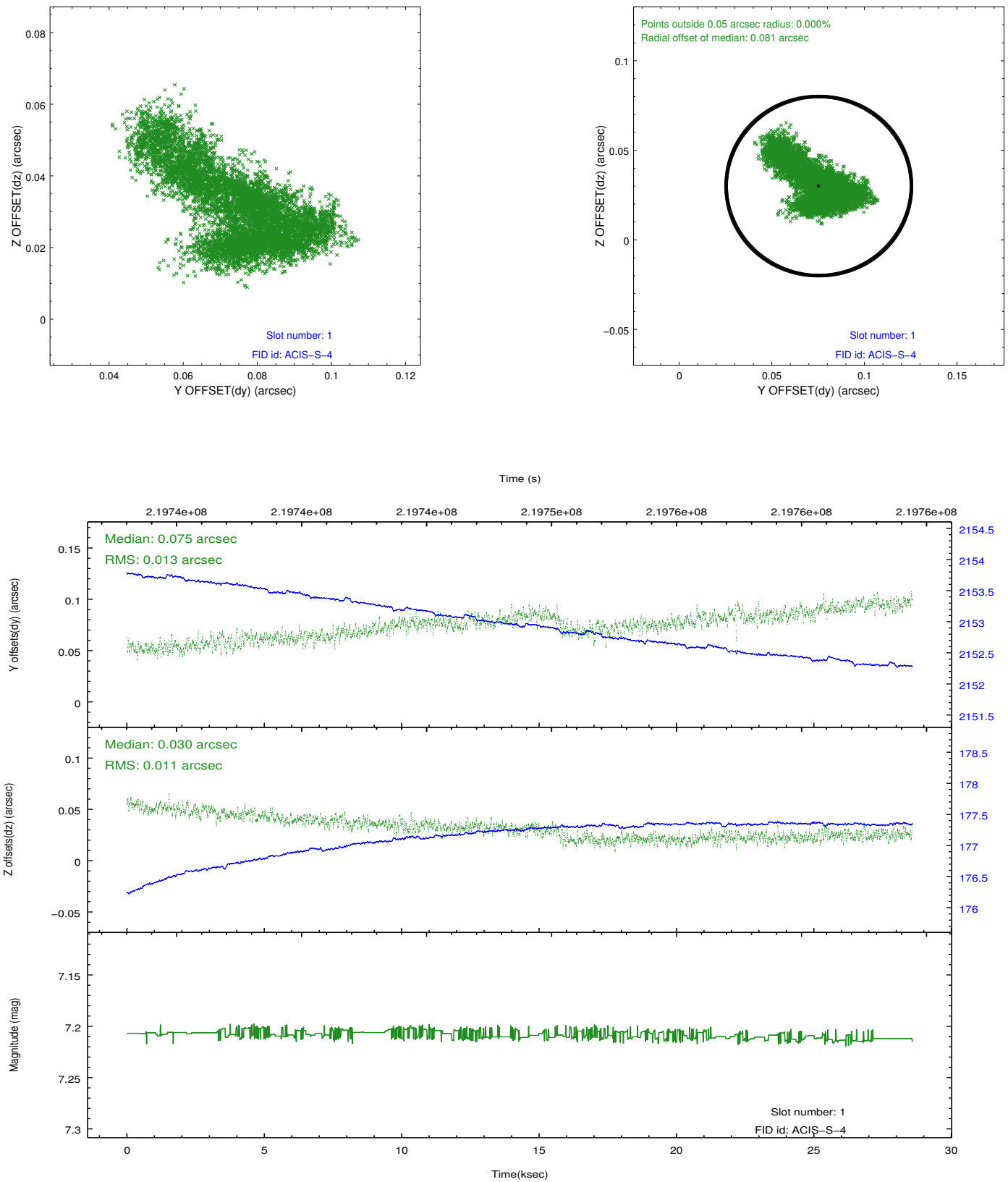


2.5 FID Slots

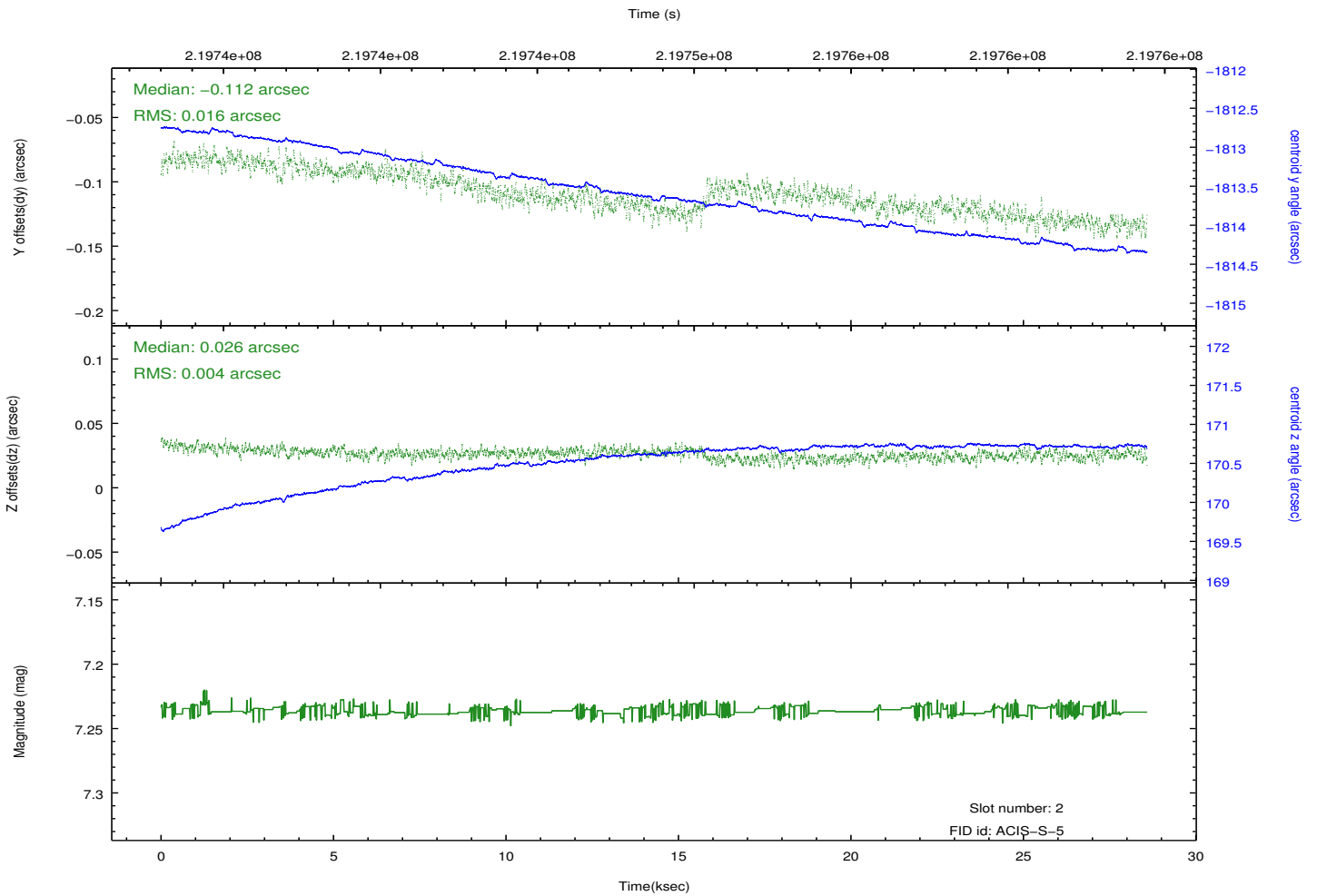
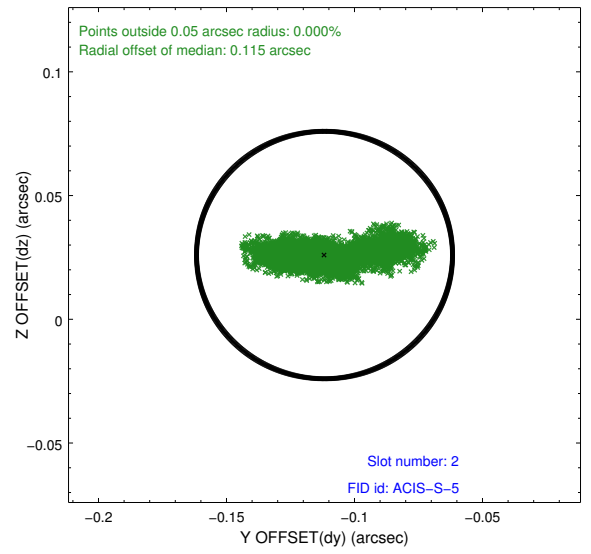
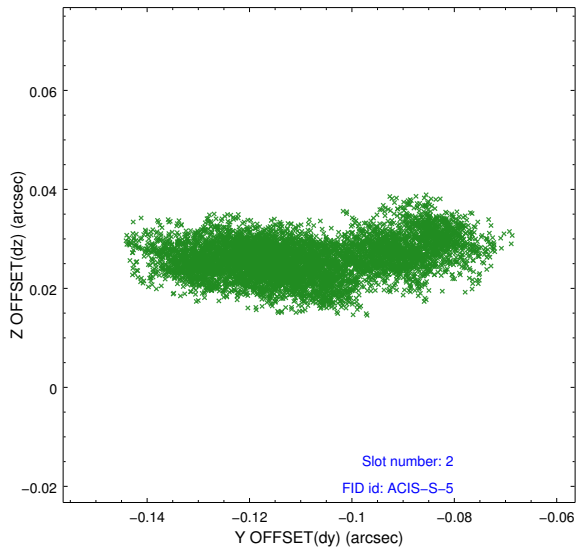
2.5.1 Slot 0



2.5.2 Slot 1



2.5.3 Slot 2



A Summary

A.1 Status

V&V Scientist	Jen Lauer
V&V Date (YYYY-MM-DD)	2013.01.08
V&V Edition	1
V&V Disposition and Status	OK
V&V Charge Time	28.57919

A.2 Comments