

V&V Reference Report

L2 ASCDS Version : 8.5.1.1

Observation 6156 - L2 Version 3
Chandra X-Ray Center

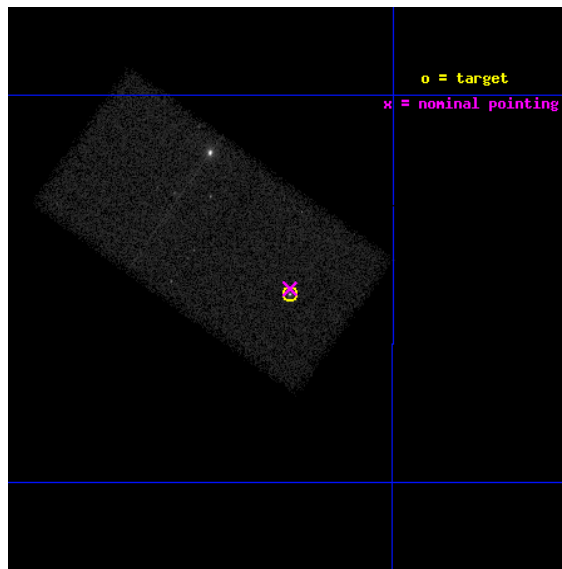
L2 Processing Date : Dec 22 2012

Contents

1	Front	2
2	OBI	3
2.1	OBI	3
2.1.1	Images	3
2.1.2	Bias	3
2.1.3	Parameters	4
2.1.4	Events	4
2.2	Compared Parameters	5
2.3	Aspect	6
2.4	Star Slots	9
2.4.1	Slot 3	9
2.4.2	Slot 4	10
2.4.3	Slot 5	11
2.4.4	Slot 6	12
2.4.5	Slot 7	13
2.5	FID Slots	14
2.5.1	Slot 0	14
2.5.2	Slot 1	15
2.5.3	Slot 2	16
A	Summary	17
A.1	Status	17
A.2	Comments	17

1 Front

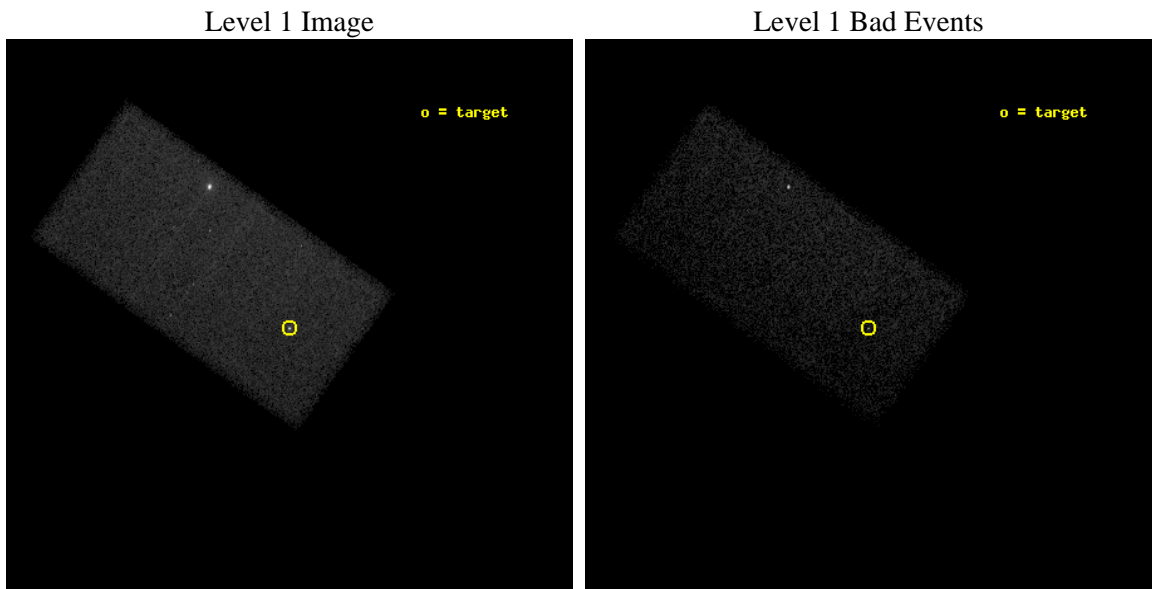
seq_num	590417	Sequence number
obs_id	6156	Observation id
title	Calibrating Pile-up in ACIS Imaging Data with PSRJ0437-4715	Propos
observer	Dr. CXC Calibration	Principal investigator
object	PSR J0437-4715	Source name
dtcycle	0	
cycle	P	events from which exps? Prim/Second/Both
ra_targ	69.315833	Observer's specified target RA [deg]
dec_targ	-47.252333	Observer's specified target Dec [deg]
ra_nom	69.316185514364	Nominal RA [deg]
dec_nom	-47.250118093124	Nominal Dec [deg]
roll_nom	215.54113472595	Nominal Roll [deg]
revision	3	Processing version of data
ontime	25183.5	Sum of GTIs [s]
livetime	24512.828998598	Livetime [s]
ontime7	25183.5	Sum of GTIs [s]
l2events	85906	Number of level 2 events



2 OBI

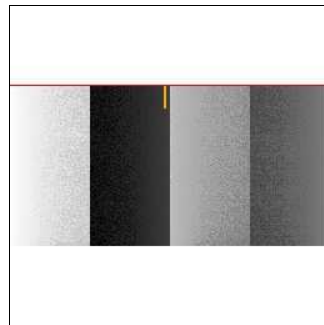
2.1 OBI

2.1.1 Images



2.1.2 Bias

Chip 7



2.1.3 Parameters

obi_num	0	Obi number	sched_exp_time	25000.000000	[s] Scheduled observation exposure time
ascdsver	8.5.1.1	Processing system revision	ontime	25183.5	Sum of GTIs [s]
caldbver	4.5.5	 	ontime7	25183.5	Sum of GTIs [s]
date	2012-12-22T16:13:58	Date and time of file creation	l1events	166616	Number of level 1 events
revision	3	Processing version of data			

2.1.4 Events

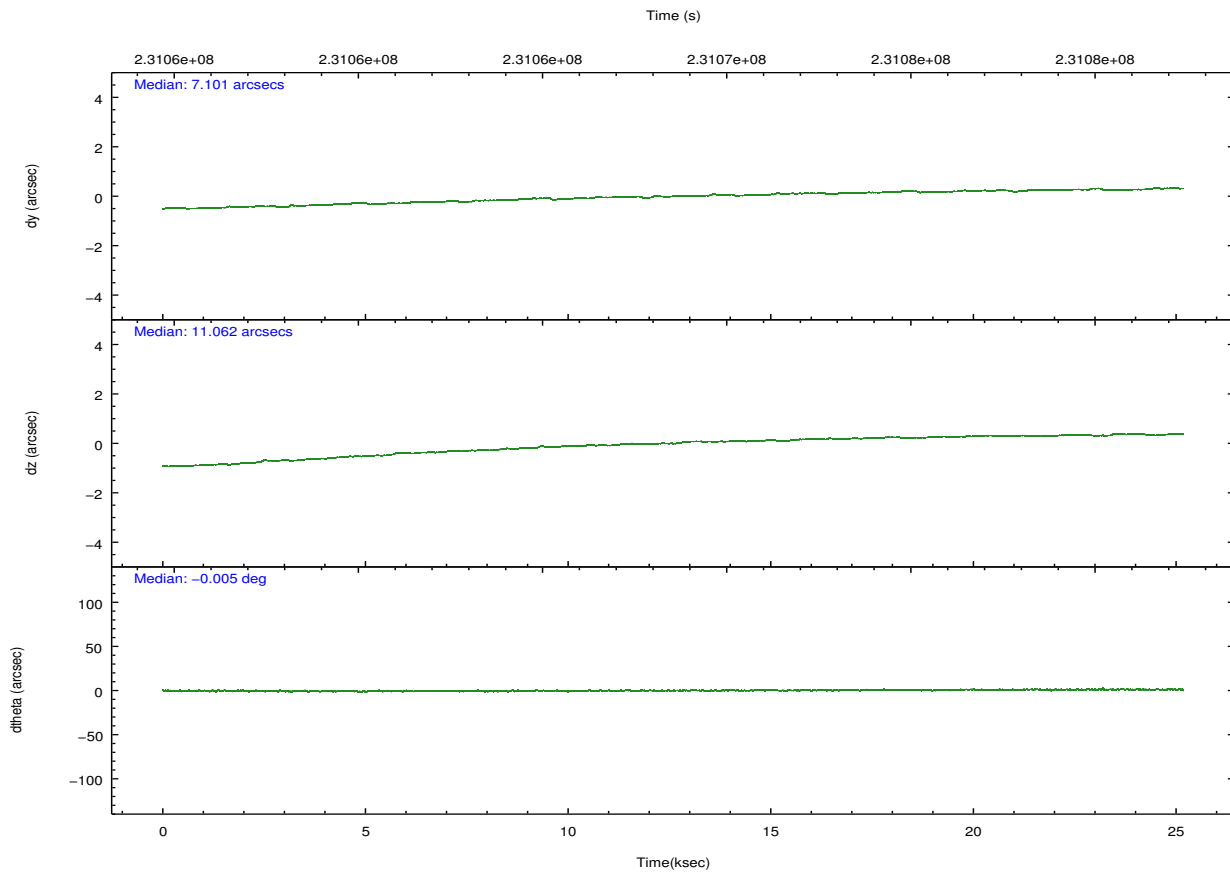
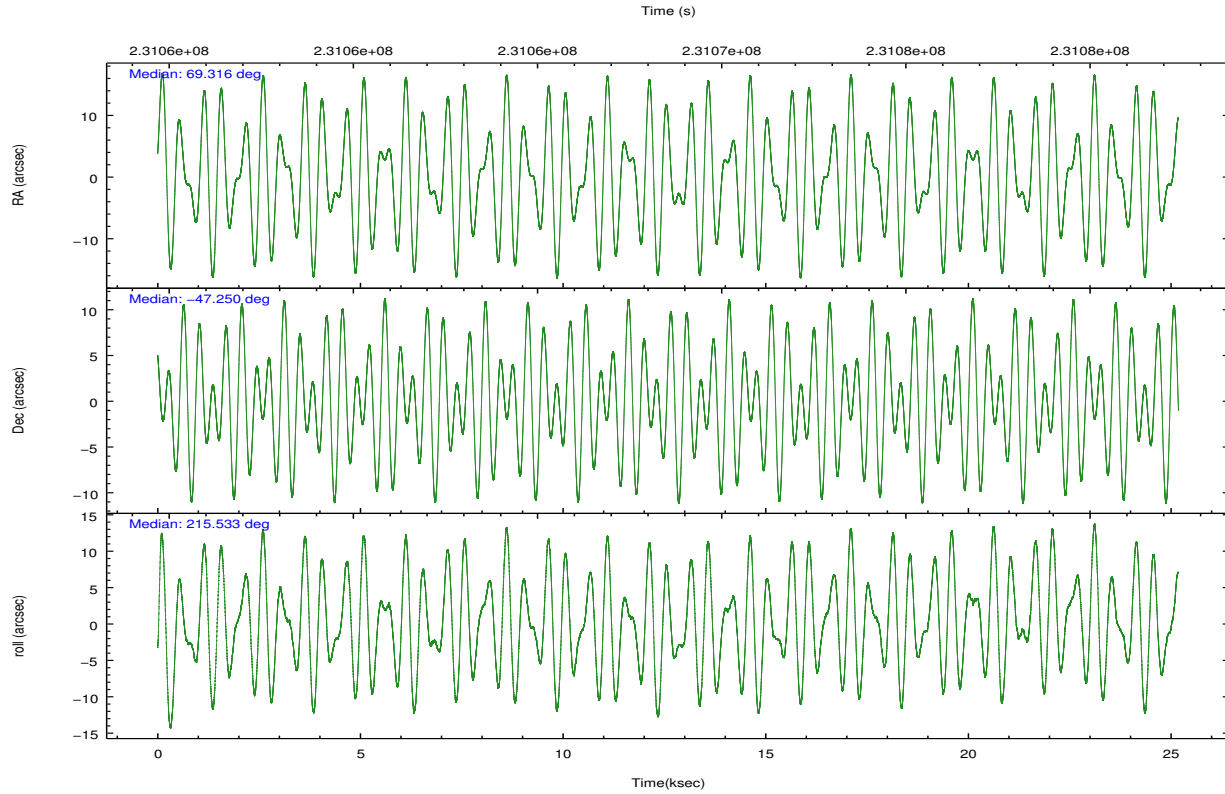
	ccd 7
level 1 events	166616
rejected events	79127
rejected %	47%

	ccd 7
grade 0 events	17878
	10%
grade 1 events	1000
	0%
grade 2 events	18317
	10%
grade 3 events	8794
	5%
grade 4 events	8512
	5%
grade 5 events	14545
	8%
grade 6 events	34023
	20%
grade 7 events	63547
	38%

2.2 Compared Parameters

Parameter	Planned	Actual	Parameter	Planned	Actual
Instrument	ACIS	ACIS	Obspar format version number	7	7
Detector	ACIS-7	ACIS-7	Obspar file type	PREDICTED	ACTUAL
Grating	NONE	NONE	Obspar update status	NONE	UPDATED
Data mode	VFAINT	VFAINT	Number of optional ACIS chips dropped	0	0
Observation mode	POINTING	POINTING	On-chip summing requested	N	N
[deg] Pointing RA	69.332299	69.31618551436407	Subarray requested	CUSTOM	1/2
[deg] Pointing Dec	-47.225183	-47.25011809312444	Subarray start row	257	257
[deg] Pointing Roll	215.396338	215.5411347259464	Subarray row count	512	512
[s] Window start time (MET)	218246464.184000	218246464.184000	Alternating exposures requested	N	N
[s] Window stop time (MET)	231292804.184000	231292804.184000	[s] Primary exposure time	0.000000	1.5
[mm] SIM focus pos	-0.684267	-0.6828225247311905			
[mm] SIM defocus	0	0.001444936568705701			
[mm] SIM translation stage pos	-190.132523	-190.1400660498719			
[mm] SIM translation stage offset	0	0.00754346686406393			
[s] Observation start time (MET)	231056134.184000	231055416.7583			
Observation start date	2005-04-28T06:14:30	2005-04-28T06:03:36			
[s] Observation end time (MET)	231081134.184000	231081930.94701			
Observation end date	2005-04-28T13:11:10	2005-04-28T13:25:30			
Read mode	TIMED	TIMED			

2.3 Aspect

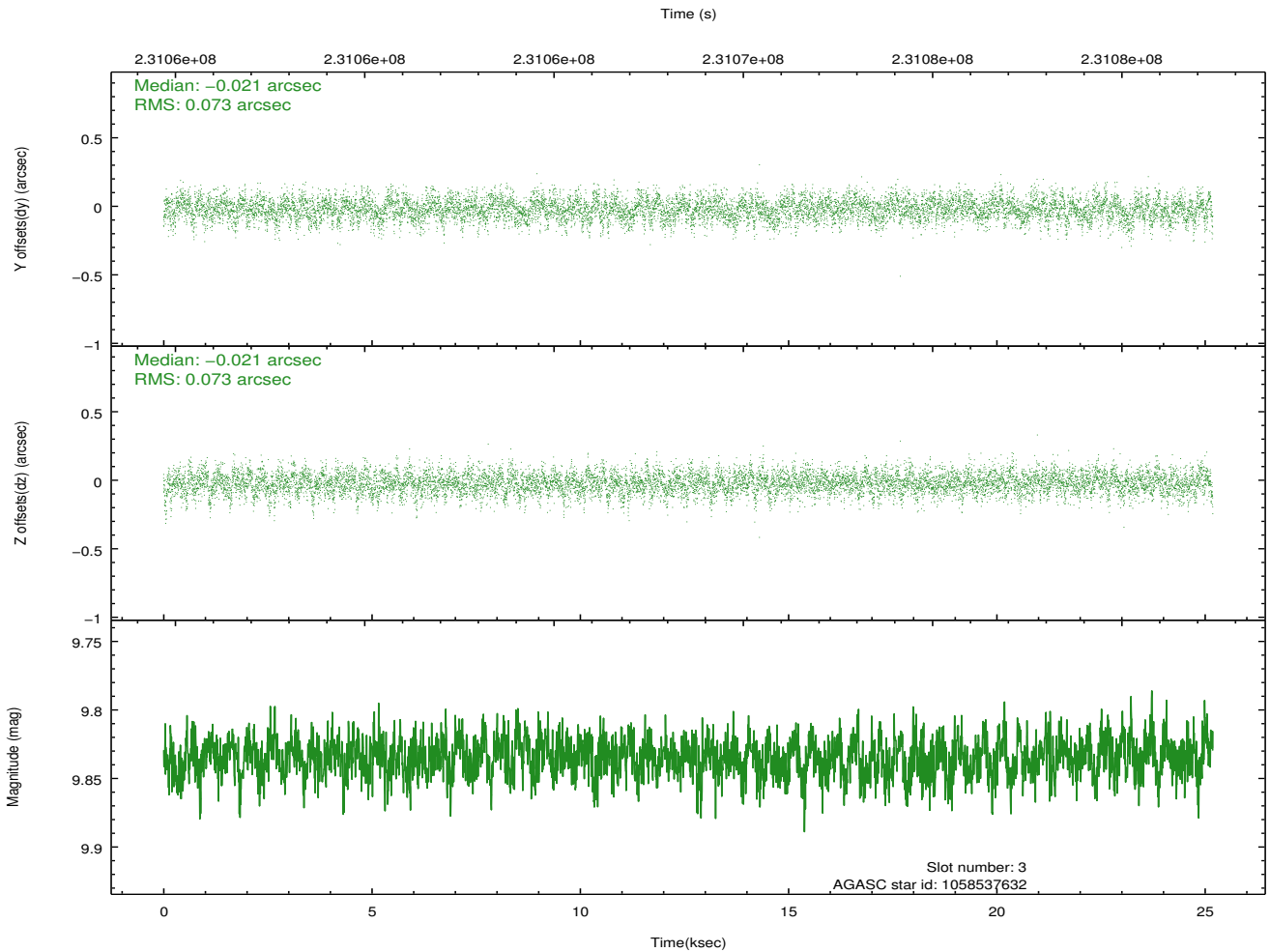
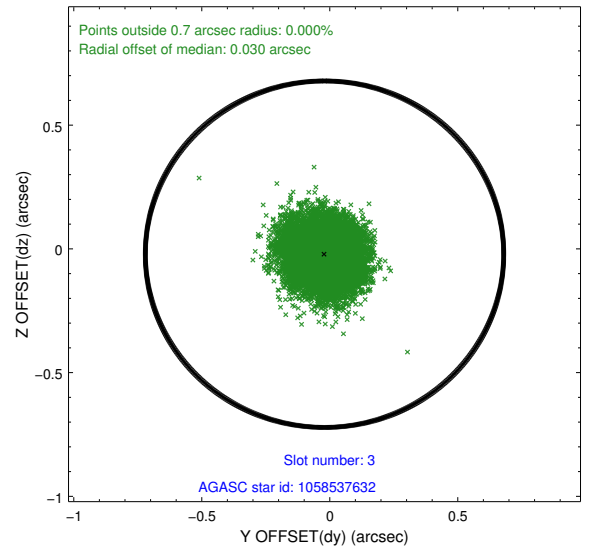
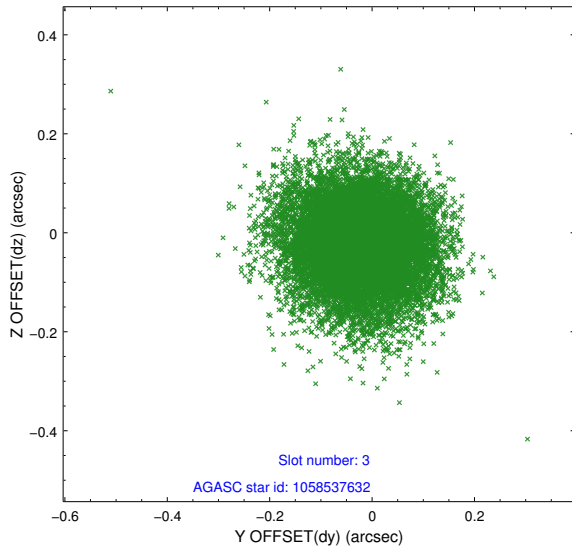


Slot Statistics

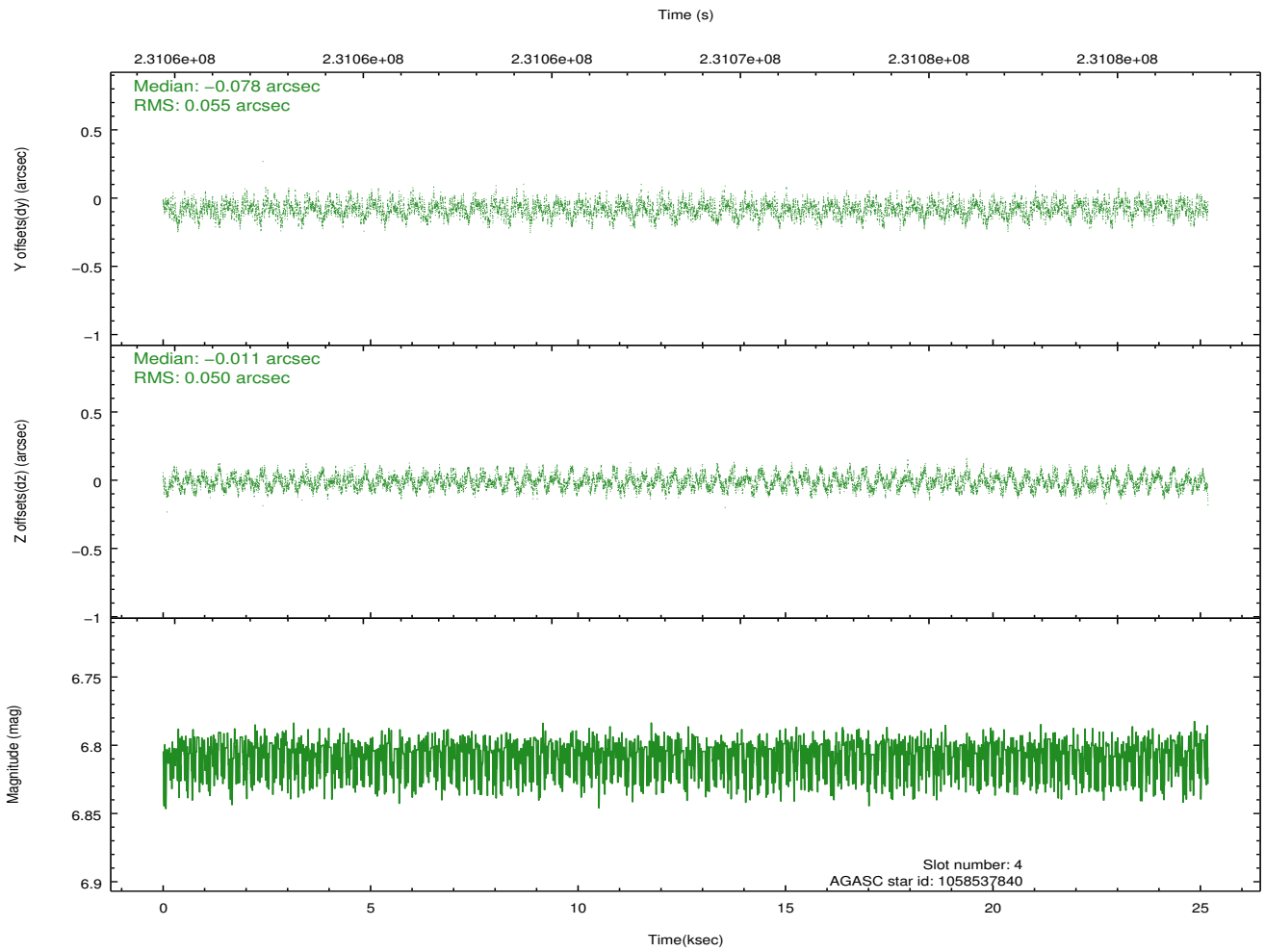
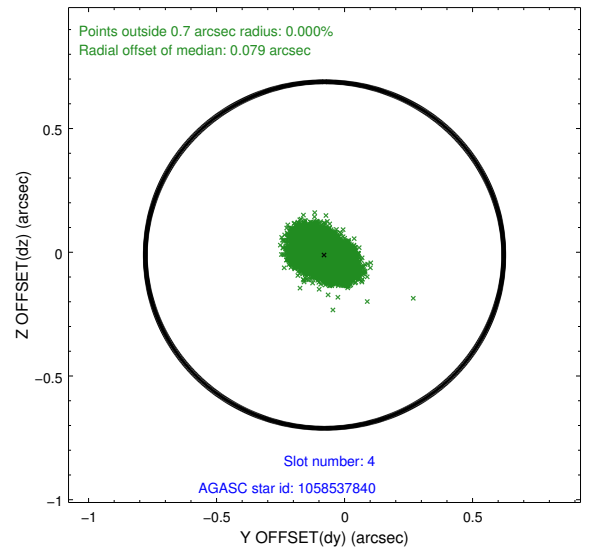
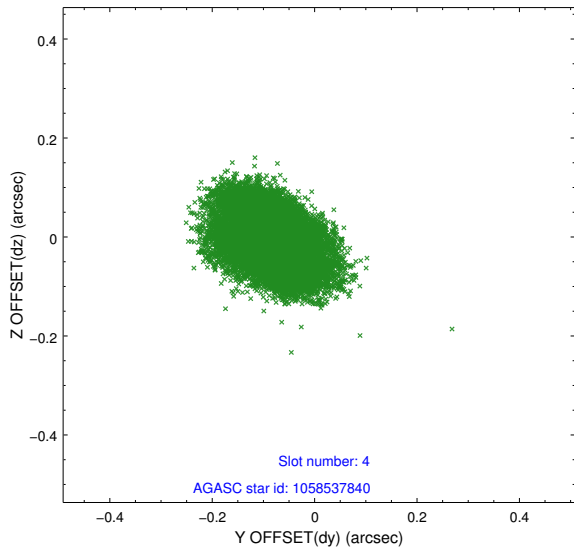
slot	status	id	mag	n_pts	med_dy	med_dz	dr1	dr2	ra	dec	mean_y	mean_z
0	FID	ACIS-S-2	7.10	6142	-0.048	-0.018	0.012	0.019	0.000000	0.000000	-759.83	-1732.27
1	FID	ACIS-S-4	7.20	6143	0.085	0.028	0.008	0.013	0.000000	0.000000	2153.49	176.19
2	FID	ACIS-S-5	7.23	6143	-0.067	-0.002	0.012	0.019	0.000000	0.000000	-1812.58	169.90
3	GUIDE	1058537632	9.83	12275	-0.021	-0.021	0.109	0.179	68.291617	-47.025396	1675.61	-2051.05
4	GUIDE	1058537840	6.81	12286	-0.078	-0.011	0.080	0.127	70.442463	-47.259783	-2128.15	1688.07
5	GUIDE	1058541272	9.23	12281	-0.041	0.051	0.111	0.176	68.392275	-46.921735	1259.79	-2217.15
6	GUIDE	1058542336	9.60	12277	0.043	0.066	0.115	0.182	69.740954	-46.597293	-2131.22	-1254.94
7	GUIDE	1058544032	8.99	12278	0.103	-0.082	0.075	0.121	69.576631	-47.141596	-661.27	102.18

2.4 Star Slots

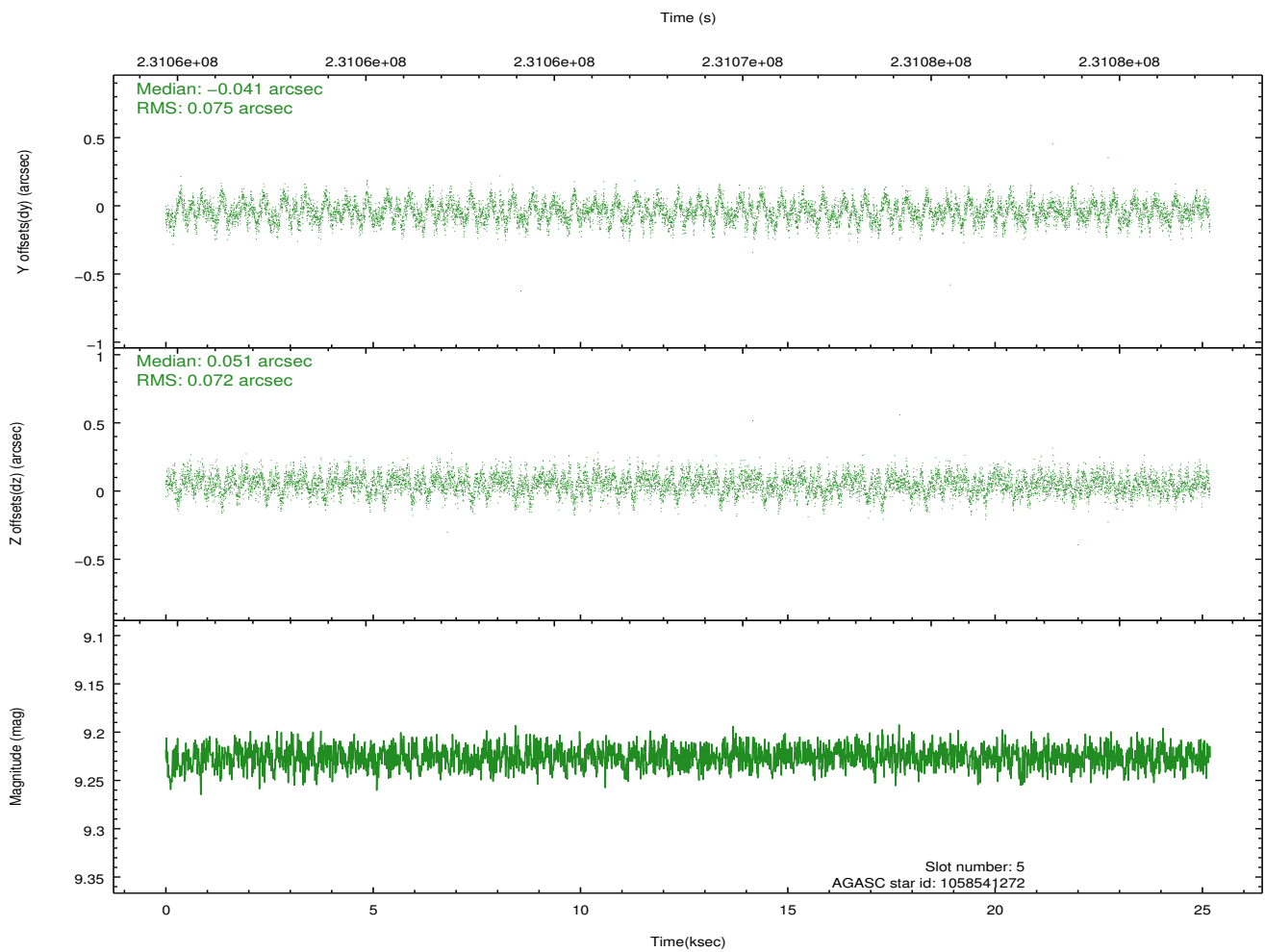
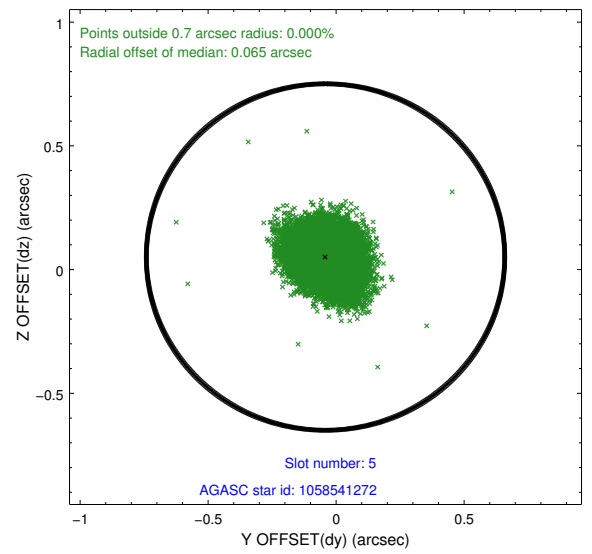
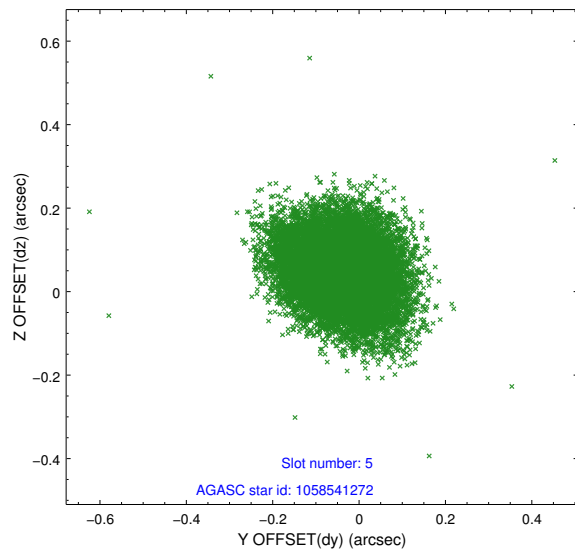
2.4.1 Slot 3



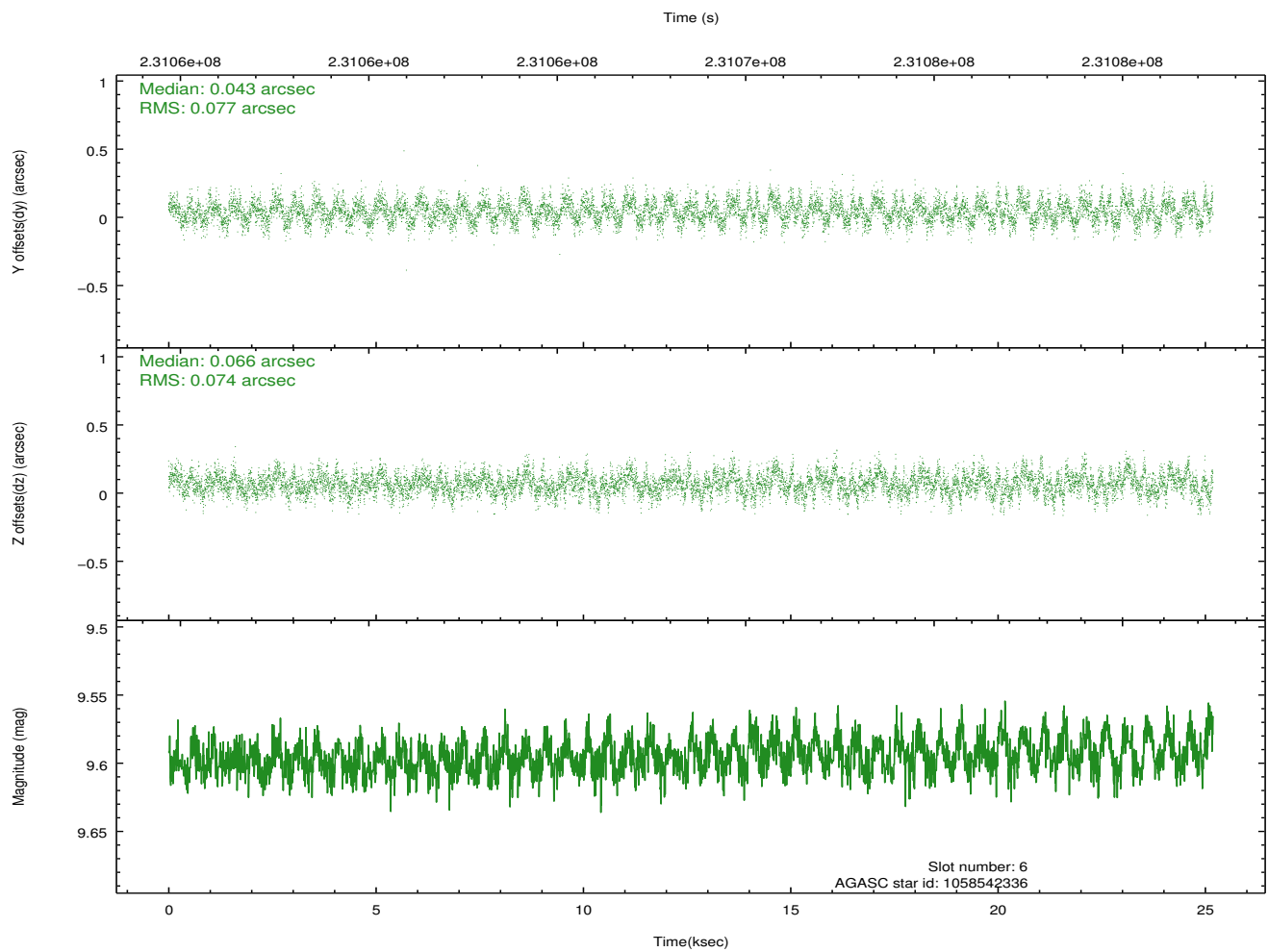
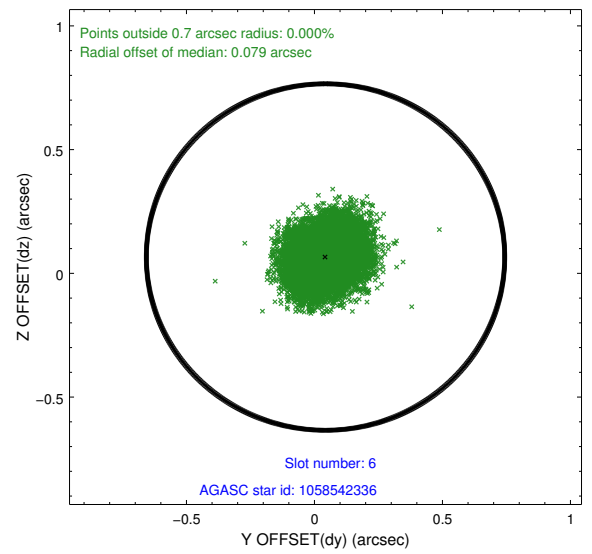
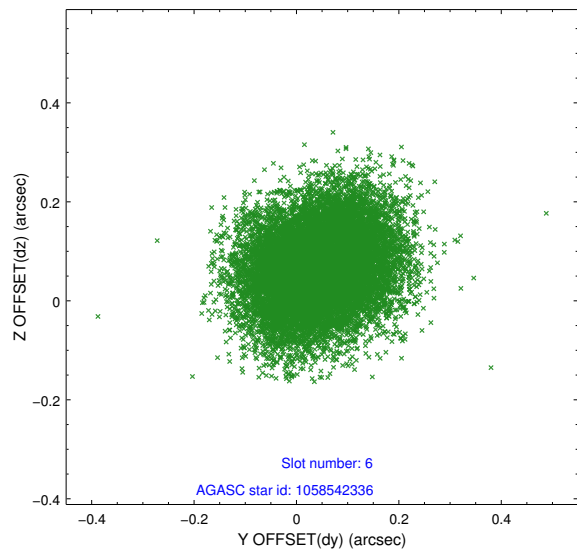
2.4.2 Slot 4



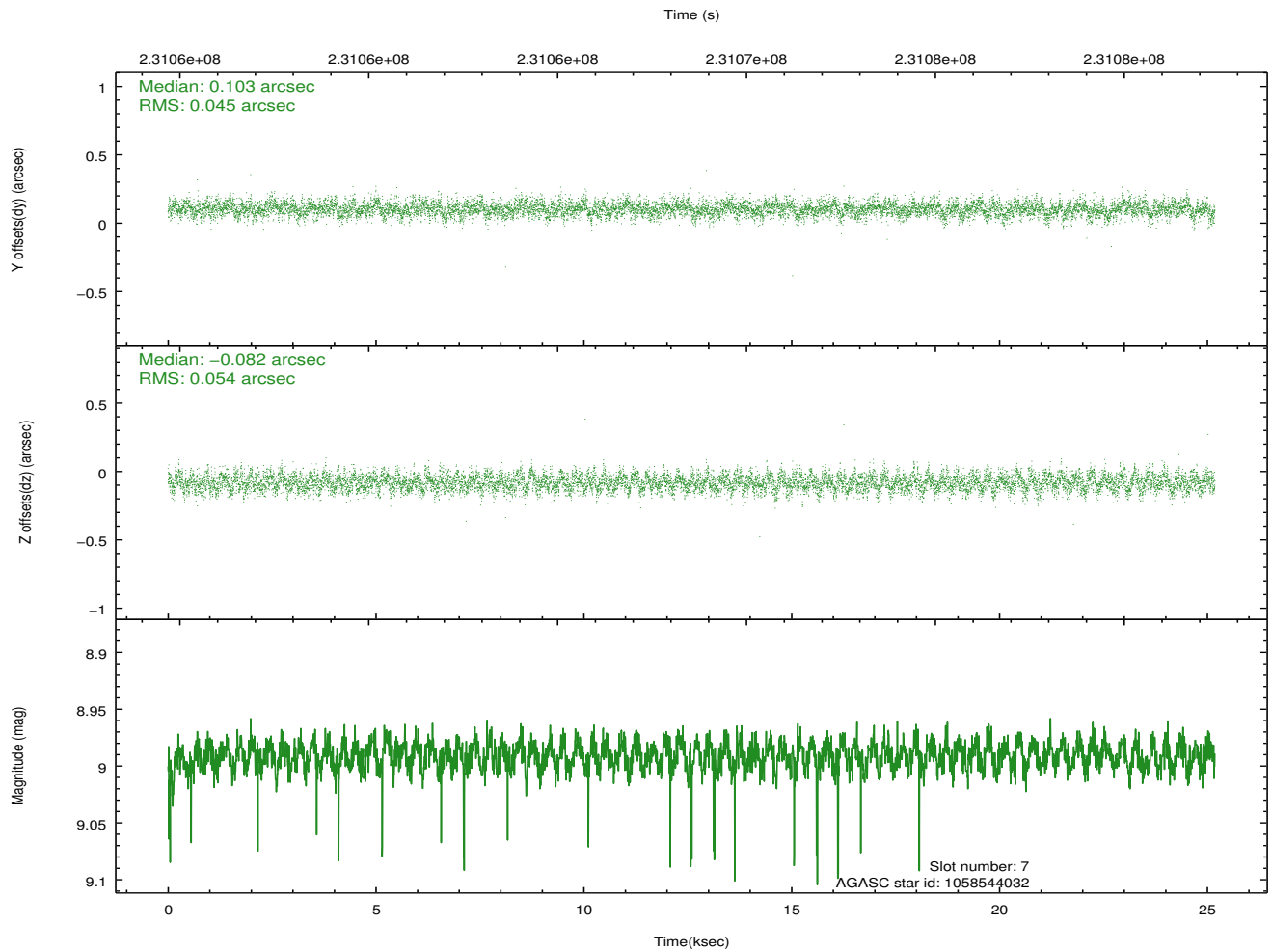
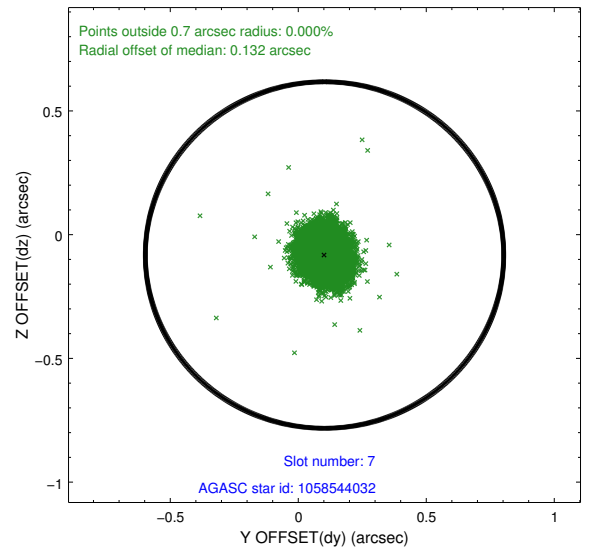
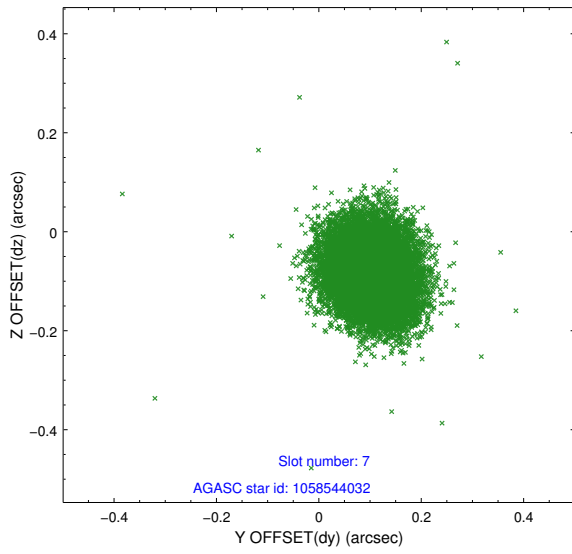
2.4.3 Slot 5



2.4.4 Slot 6

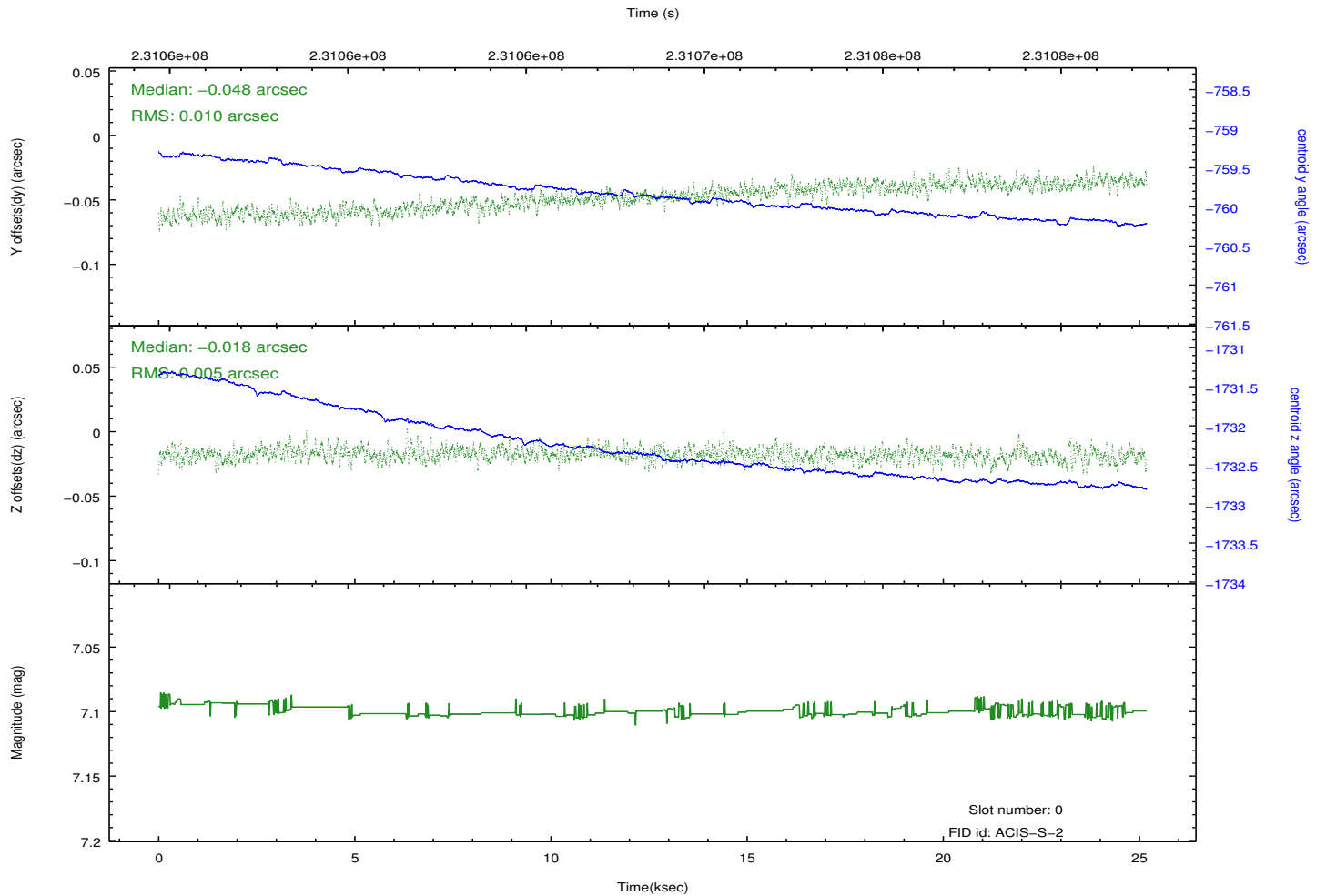
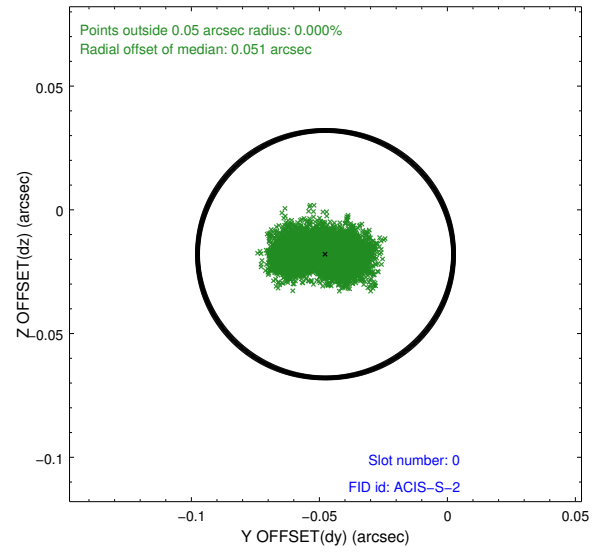
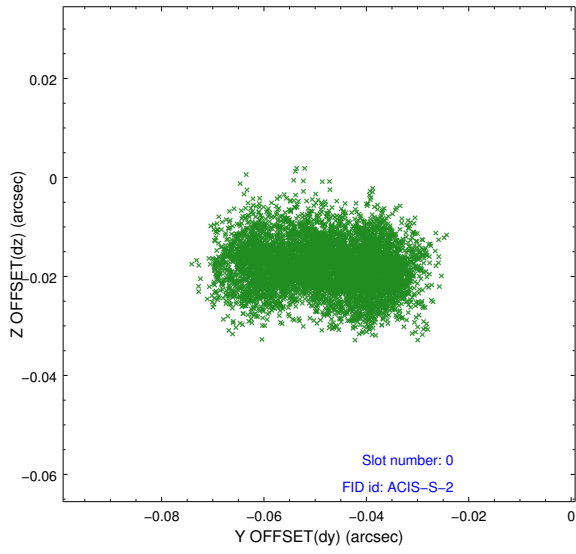


2.4.5 Slot 7

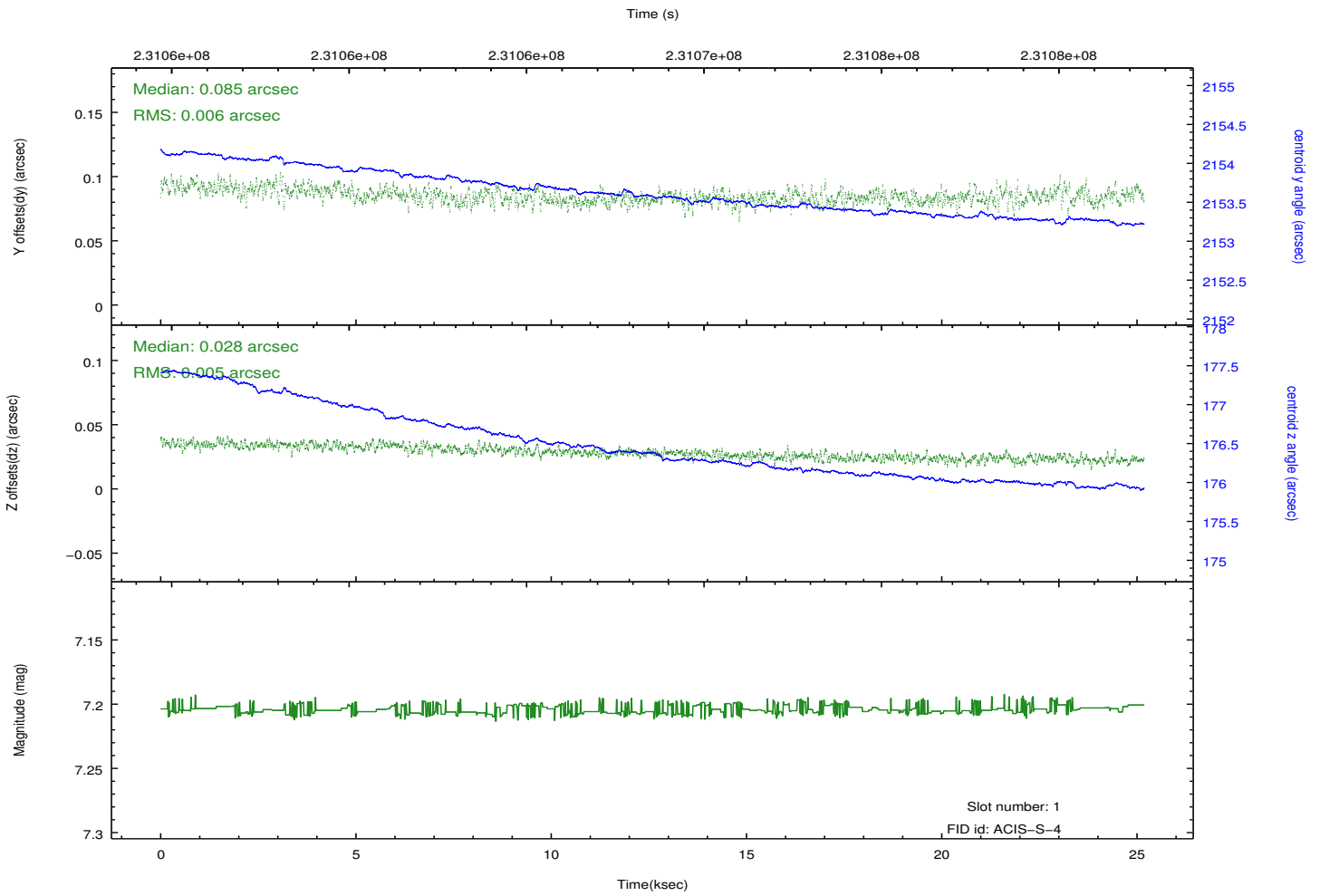
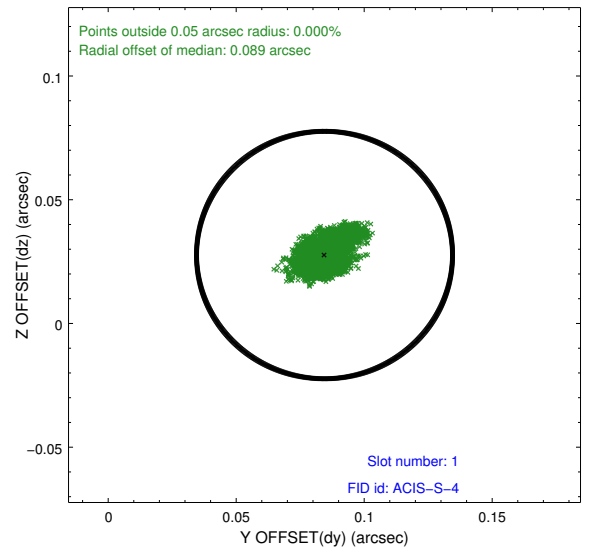
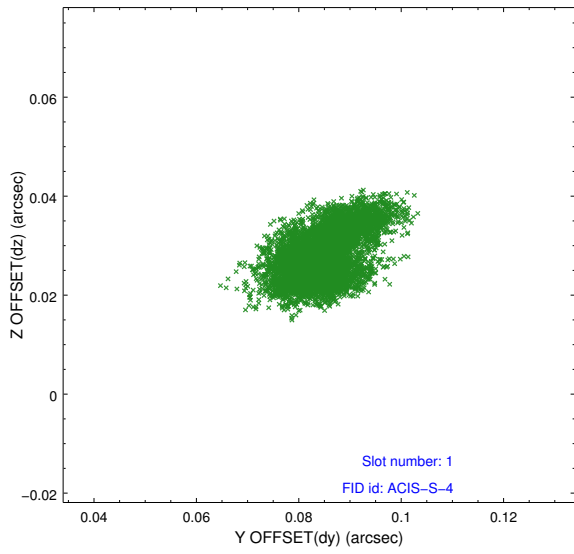


2.5 FID Slots

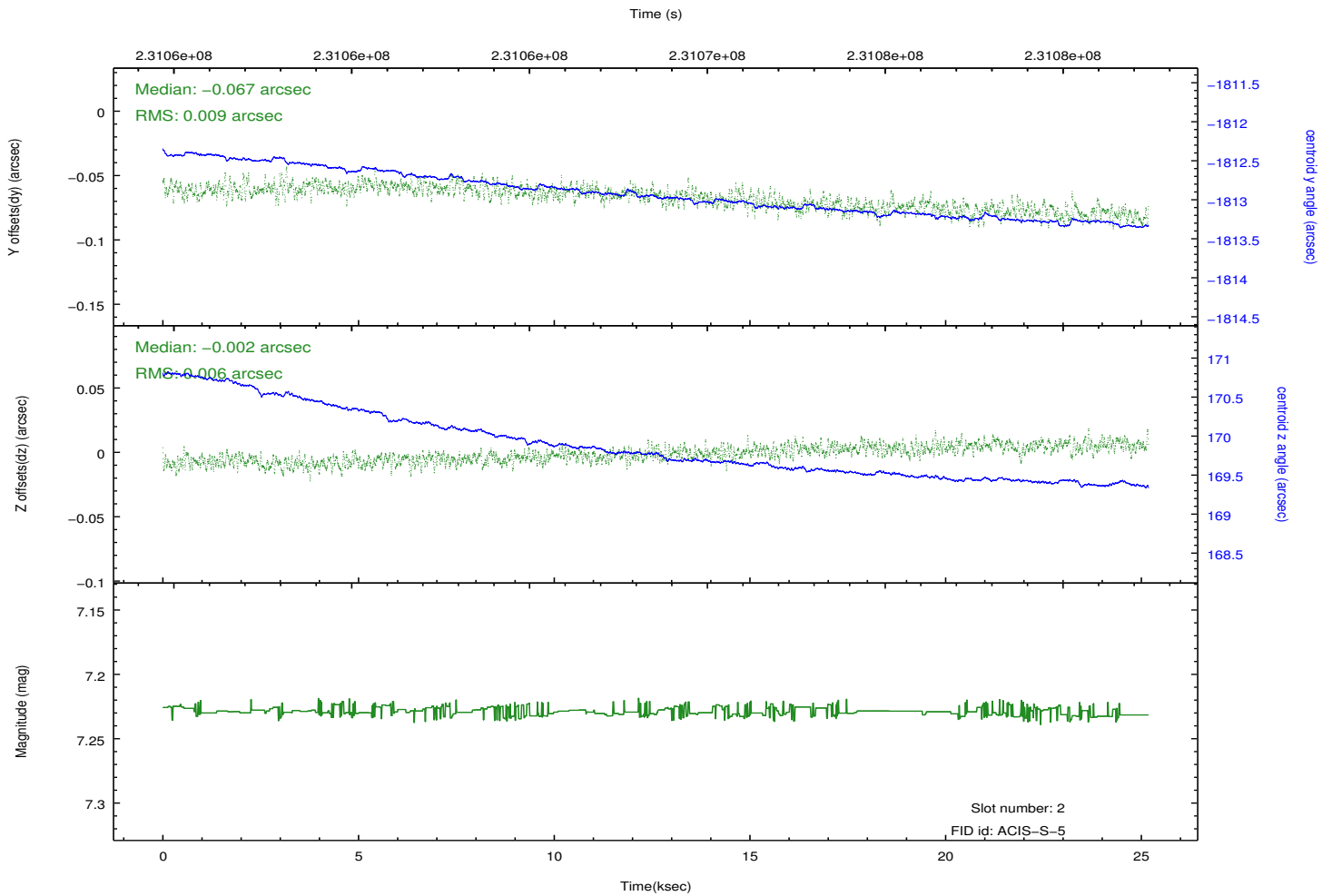
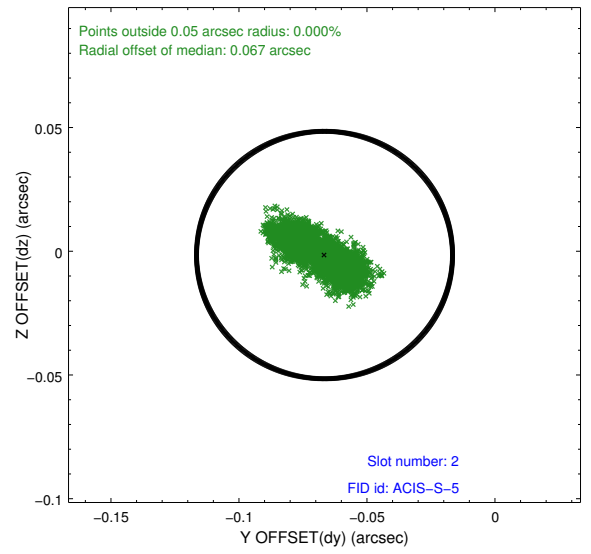
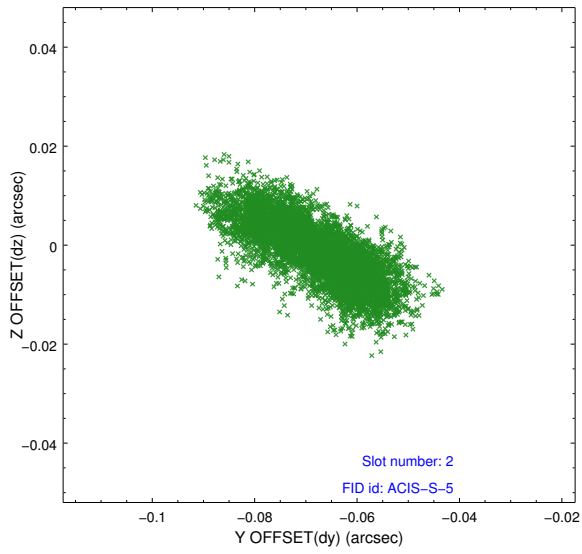
2.5.1 Slot 0



2.5.2 Slot 1



2.5.3 Slot 2



A Summary

A.1 Status

V&V Scientist	Jen Lauer
V&V Date (YYYY-MM-DD)	2013.01.15
V&V Edition	1
V&V Disposition and Status	OK
V&V Charge Time	25.1835

A.2 Comments

Window constraint satisfied.