

V&V Reference Report

L2 ASCDS Version : 8.4.3

Observation 6416 - L2 Version 2
Chandra X-Ray Center

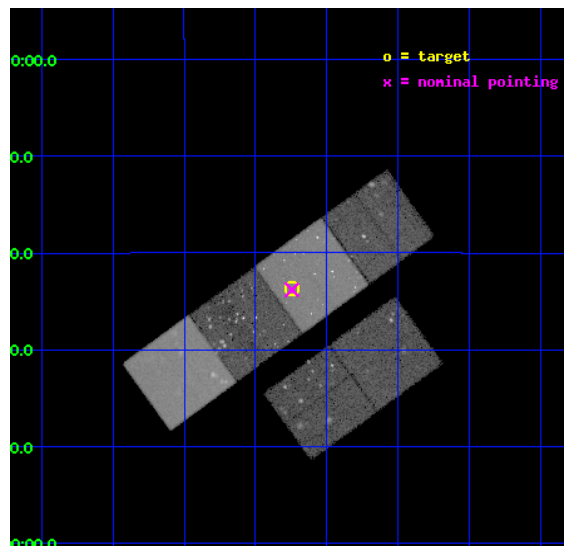
L2 Processing Date : Mar 22 2012

Contents

1	Front	2
2	OBI	3
2.1	OBI	3
2.1.1	Images	3
2.1.2	Bias	3
2.1.3	Parameters	4
2.1.4	Events	4
2.2	Compared Parameters	5
2.3	Aspect	6
2.4	Star Slots	9
2.4.1	Slot 3	9
2.4.2	Slot 4	10
2.4.3	Slot 5	11
2.4.4	Slot 6	12
2.4.5	Slot 7	13
2.5	FID Slots	14
2.5.1	Slot 0	14
2.5.2	Slot 1	15
2.5.3	Slot 2	16
A	Summary	17
A.1	Status	17
A.2	Comments	17

1 Front

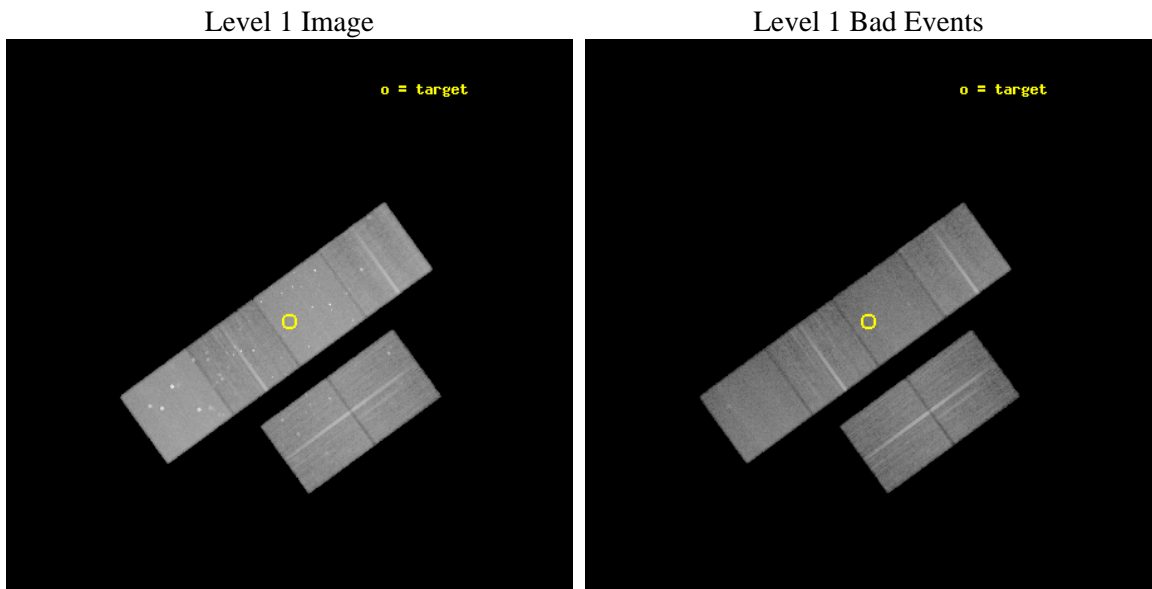
seq_num	200391	Sequence number
obs_id	6416	Observation id
title	Monitoring the X-ray emission of V1118 Ori during its outburst	Pro
observer	Prof. Marc Audard	Principal investigator
object	V1118 Ori	Source name
dtcycle	0	
cycle	P	events from which exps? Prim/Second/Both
ra_targ	83.68625	Observer's specified target RA [deg]
dec_targ	-5.561472	Observer's specified target Dec [deg]
ra_nom	83.686279707845	Nominal RA [deg]
dec_nom	-5.5635451454509	Nominal Dec [deg]
roll_nom	323.96852032955	Nominal Roll [deg]
revision	2	Processing version of data
ontime	28172.799895048	Sum of GTIs [s]
livetime	27816.058939154	Livetime [s]
ontime2	28172.799895048	Sum of GTIs [s]
ontime3	28172.799895048	Sum of GTIs [s]
ontime5	28172.799895048	Sum of GTIs [s]
ontime6	28172.799895048	Sum of GTIs [s]
ontime7	28172.799895048	Sum of GTIs [s]
ontime8	28166.317964107	Sum of GTIs [s]
l2events	409899	Number of level 2 events



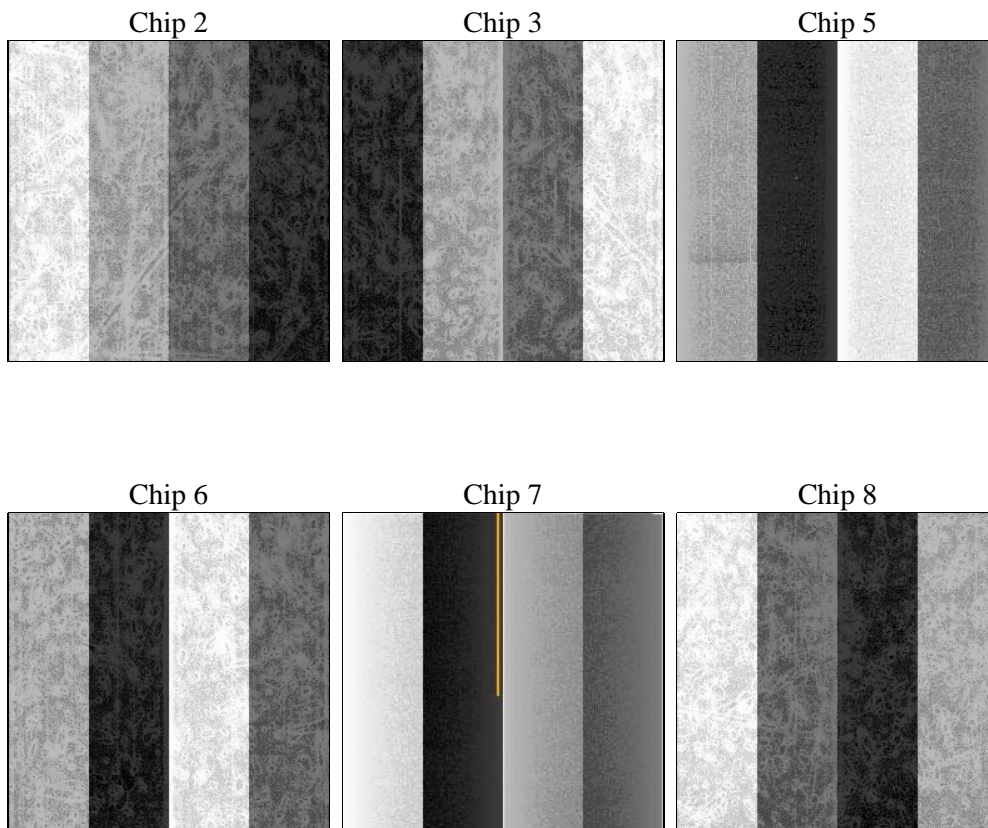
2 OBI

2.1 OBI

2.1.1 Images



2.1.2 Bias



2.1.3 Parameters

obi_num	1	Obi number	sched_exp_time	28000.000000	[s] Scheduled observation exposure time
ascdsver	8.4.3	Processing system revision	ontime	28172.799895048	Sum of GTIs [s]
caldbver	4.4.8	 	ontime2	28172.799895048	Sum of GTIs [s]
date	2012-03-22T01:03:37	Date and time of file creation	ontime3	28172.799895048	Sum of GTIs [s]
revision	2	Processing version of data	ontime5	28172.799895048	Sum of GTIs [s]
			ontime6	28172.799895048	Sum of GTIs [s]
			ontime7	28172.799895048	Sum of GTIs [s]
			ontime8	28166.317964107	Sum of GTIs [s]
			l1events	1692021	Number of level 1 events

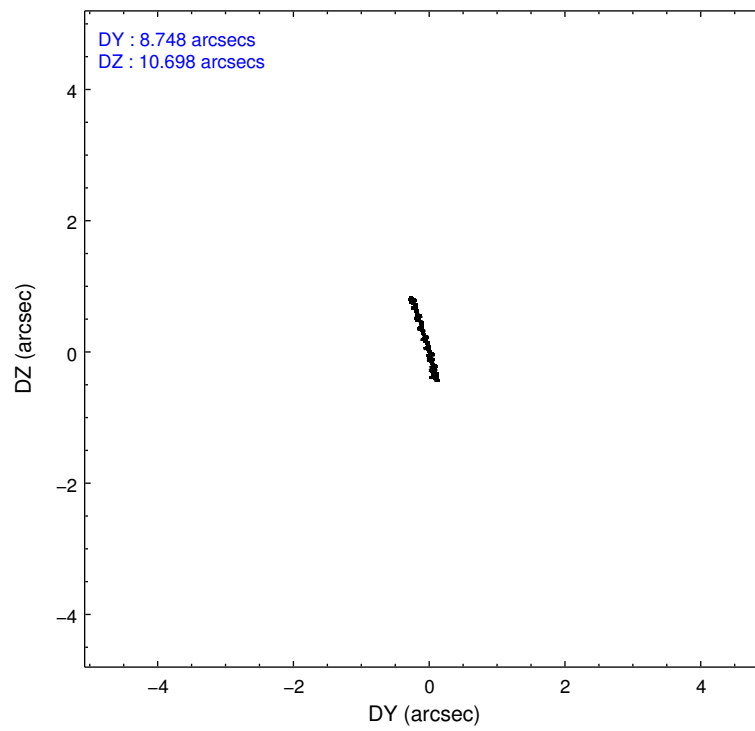
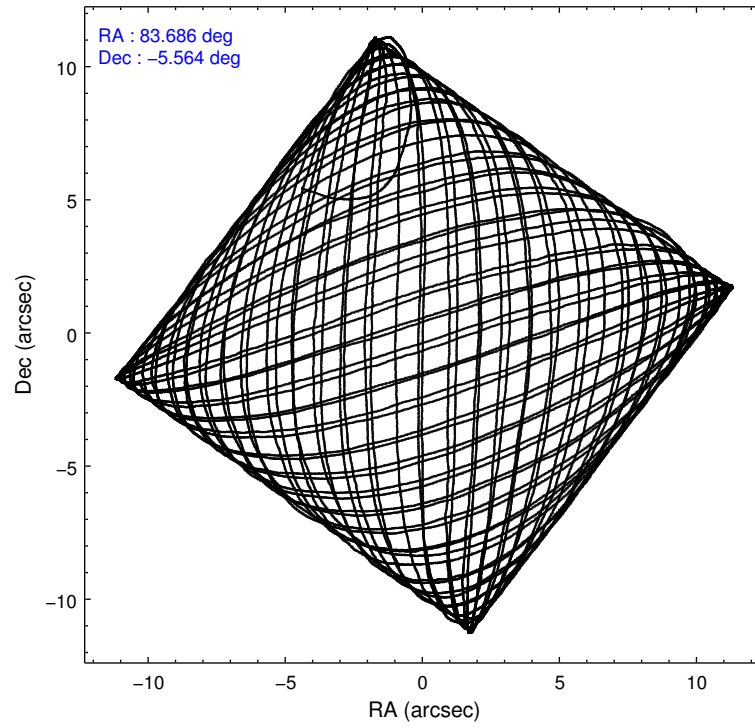
2.1.4 Events

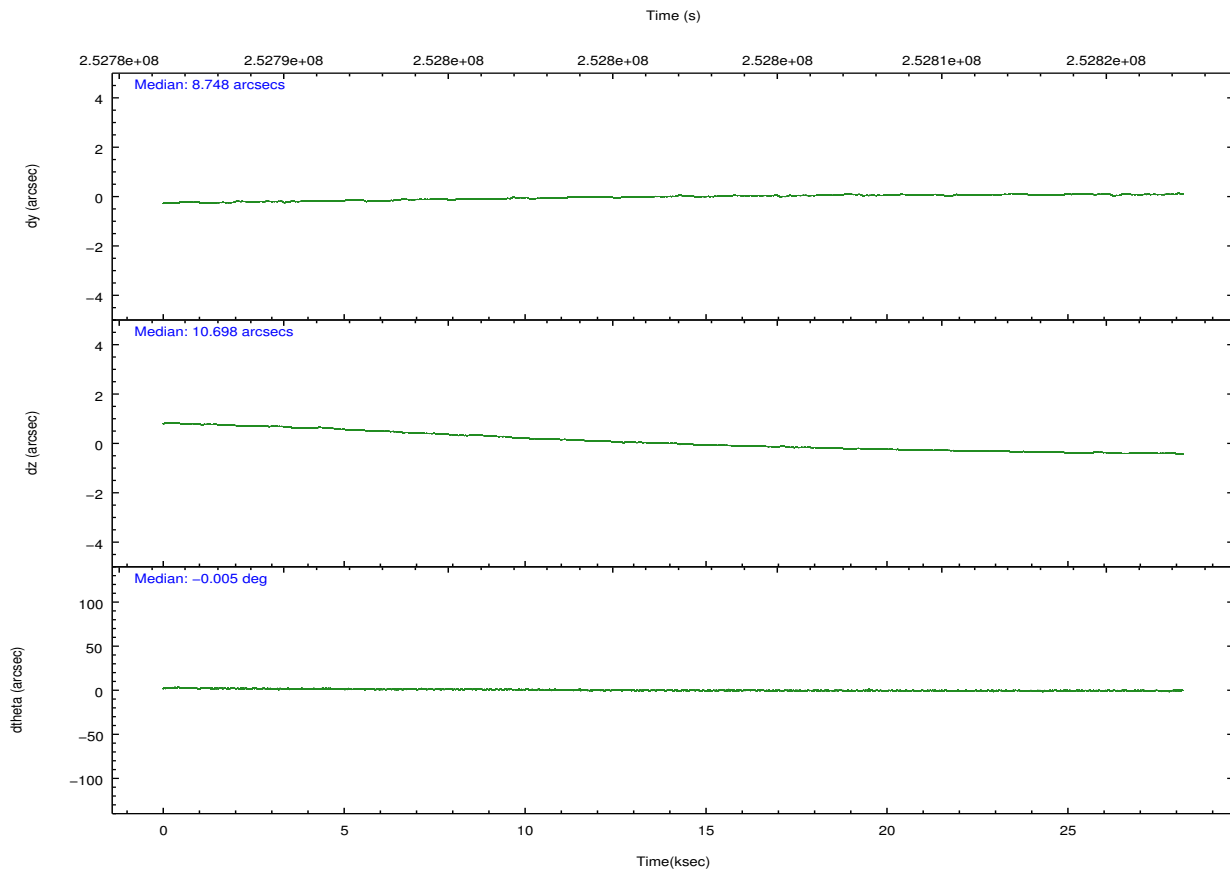
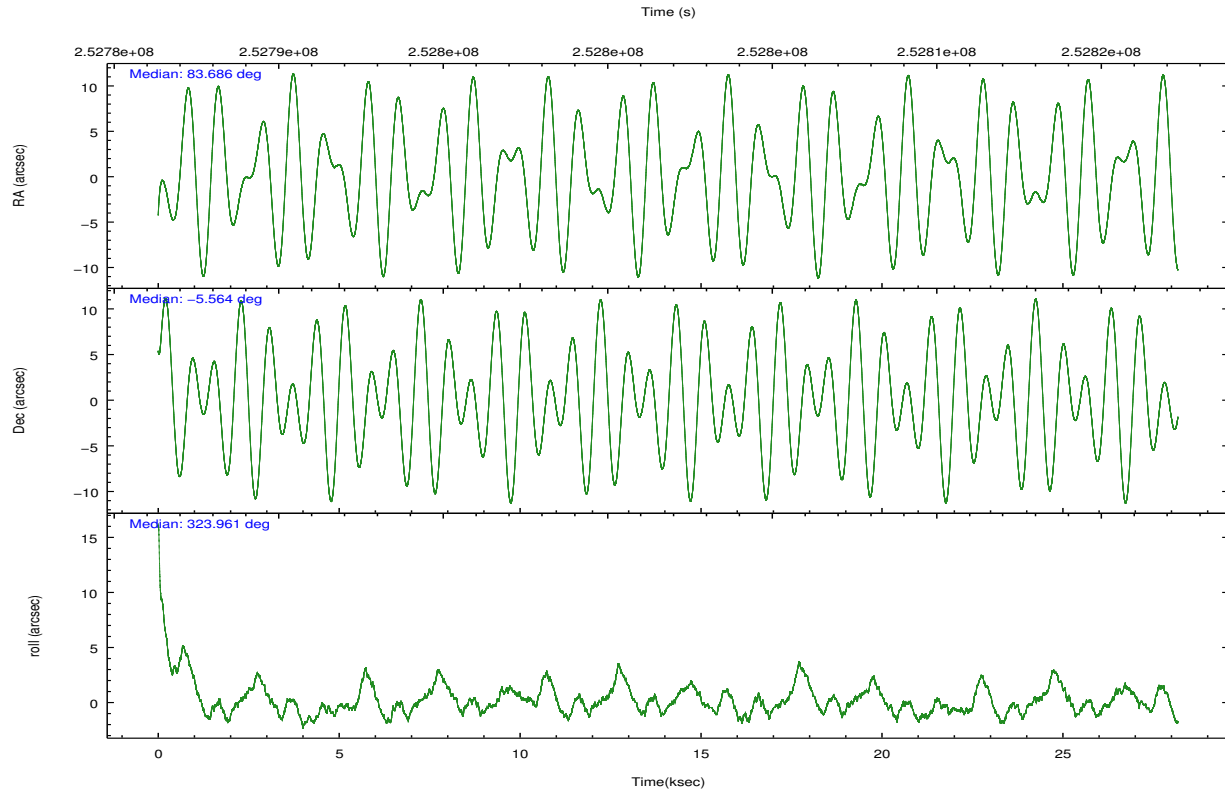
	ccd 2	ccd 3	ccd 5	ccd 6	ccd 7	ccd 8		ccd 2	ccd 3	ccd 5	ccd 6	ccd 7	ccd 8
level 1 events	238741	221180	362869	244379	330946	293906	grade 0 events	15405	12736	30621	19429	16940	22363
rejected events	207937	193520	186824	206571	185387	228683		6%	5%	8%	7%	5%	7%
rejected %	87%	87%	51%	84%	56%	77%	grade 1 events	163	124	464	169	362	211
								0%	0%	0%	0%	0%	0%
							grade 2 events	5863	5277	48792	6961	30545	14194
								2%	2%	13%	2%	9%	4%
							grade 3 events	2635	2557	6930	2880	13320	6519
								1%	1%	1%	1%	4%	2%
							grade 4 events	2664	2619	6384	2918	13153	6057
								1%	1%	1%	1%	3%	2%
							grade 5 events	9163	10062	25279	10711	30299	14014
								3%	4%	6%	4%	9%	4%
							grade 6 events	4377	4589	84117	5785	72229	16393
								1%	2%	23%	2%	21%	5%
							grade 7 events	198471	183216	160282	195526	154098	214155
								83%	82%	44%	80%	46%	72%

2.2 Compared Parameters

Parameter	Planned	Actual	Parameter	Planned	Actual
Instrument	ACIS	ACIS	Obspar format version number	7	7
Detector	ACIS-235678	ACIS-235678	Obspar file type	PREDICTED	ACTUAL
Grating	NONE	NONE	Obspar update status	NONE	UPDATED
Data mode	VFAINT	VFAINT	Number of optional ACIS chips dropped	0	0
Observation mode	POINTING	POINTING	On-chip summing requested	N	N
[deg] Pointing RA	83.659025	83.68627970784472	Subarray requested	NONE	NONE
[deg] Pointing Dec	-5.561058	-5.563545145450932	Alternating exposures requested	N	N
[deg] Pointing Roll	323.809249	323.968520329546	[s] Primary exposure time	0.000000	3.2
[mm] SIM focus pos	-0.684267	-0.6828225247311905			
[mm] SIM defocus	0	0.001444936568705701			
[mm] SIM translation stage pos	-190.132523	-190.1400660498719			
[mm] SIM translation stage offset	0	0.00754346686406393			
[s] Observation start time (MET)	252787923.184000	252786794.33105			
Observation start date	2006-01-04T18:50:58	2006-01-04T18:33:14			
[s] Observation end time (MET)	252815923.184000	252817729.85748			
Observation end date	2006-01-05T02:37:38	2006-01-05T03:08:49			
Read mode	TIMED	TIMED			

2.3 Aspect



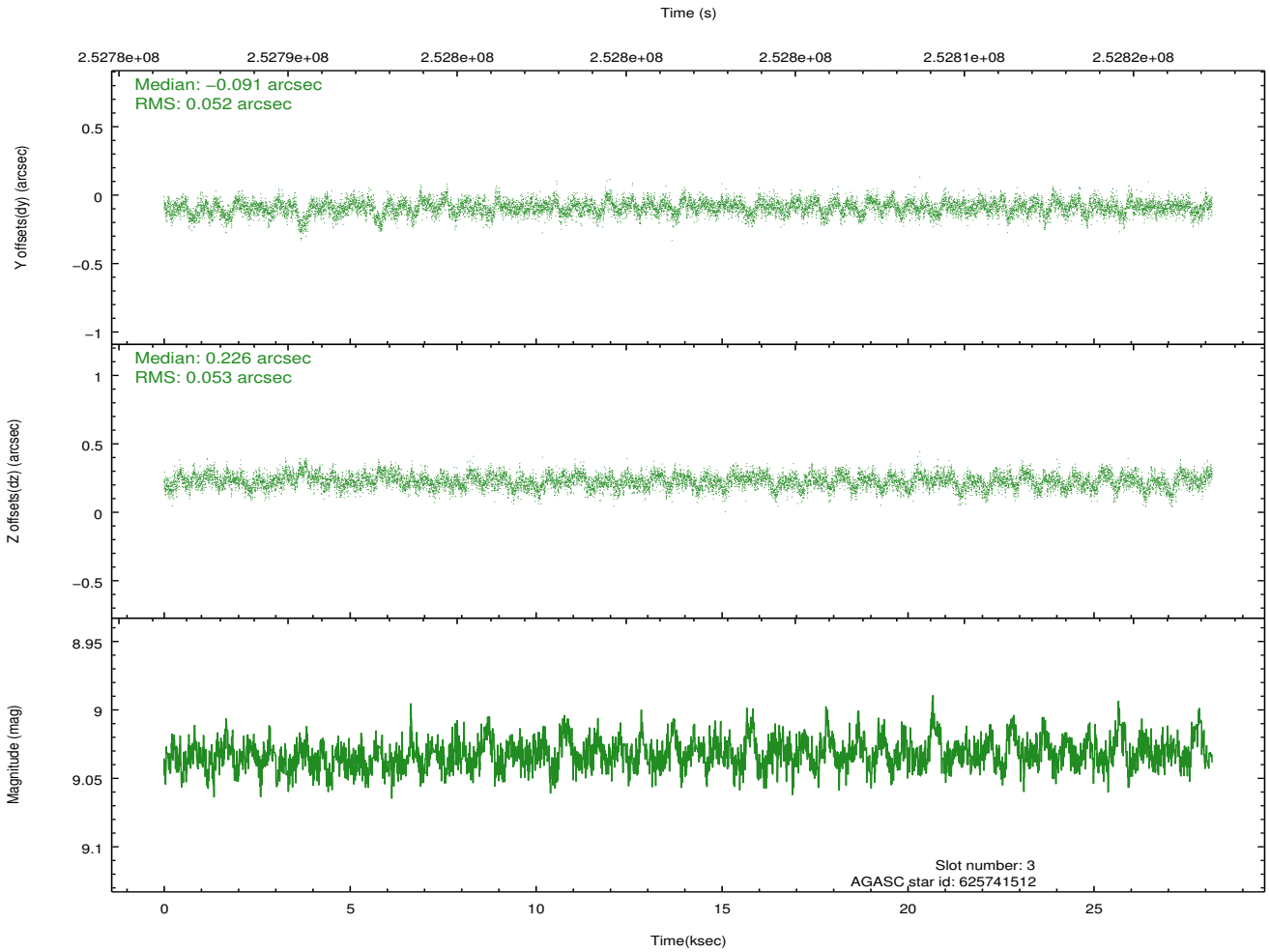
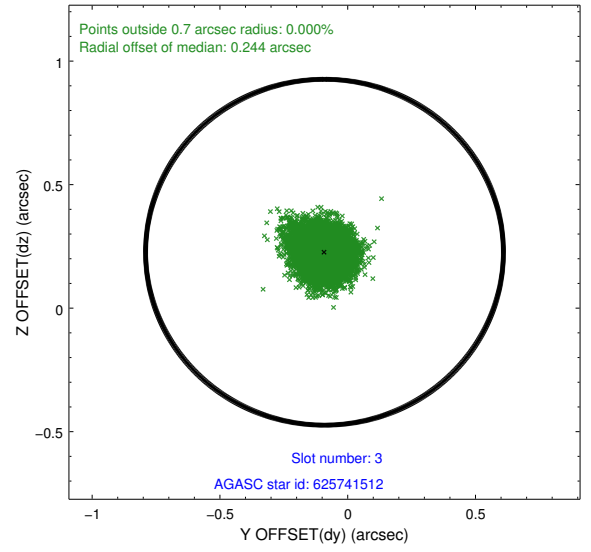
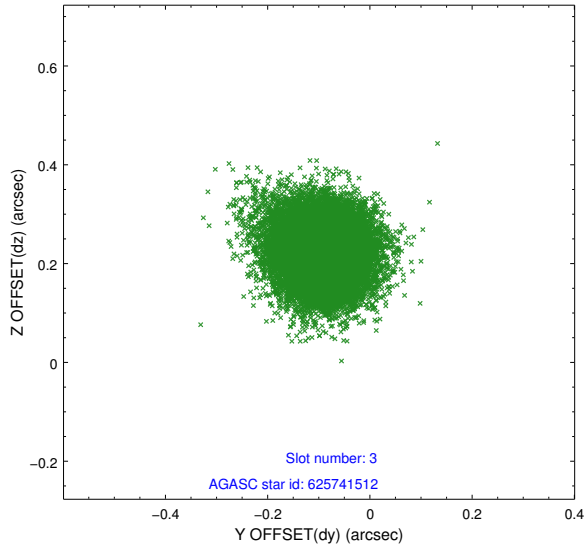


Slot Statistics

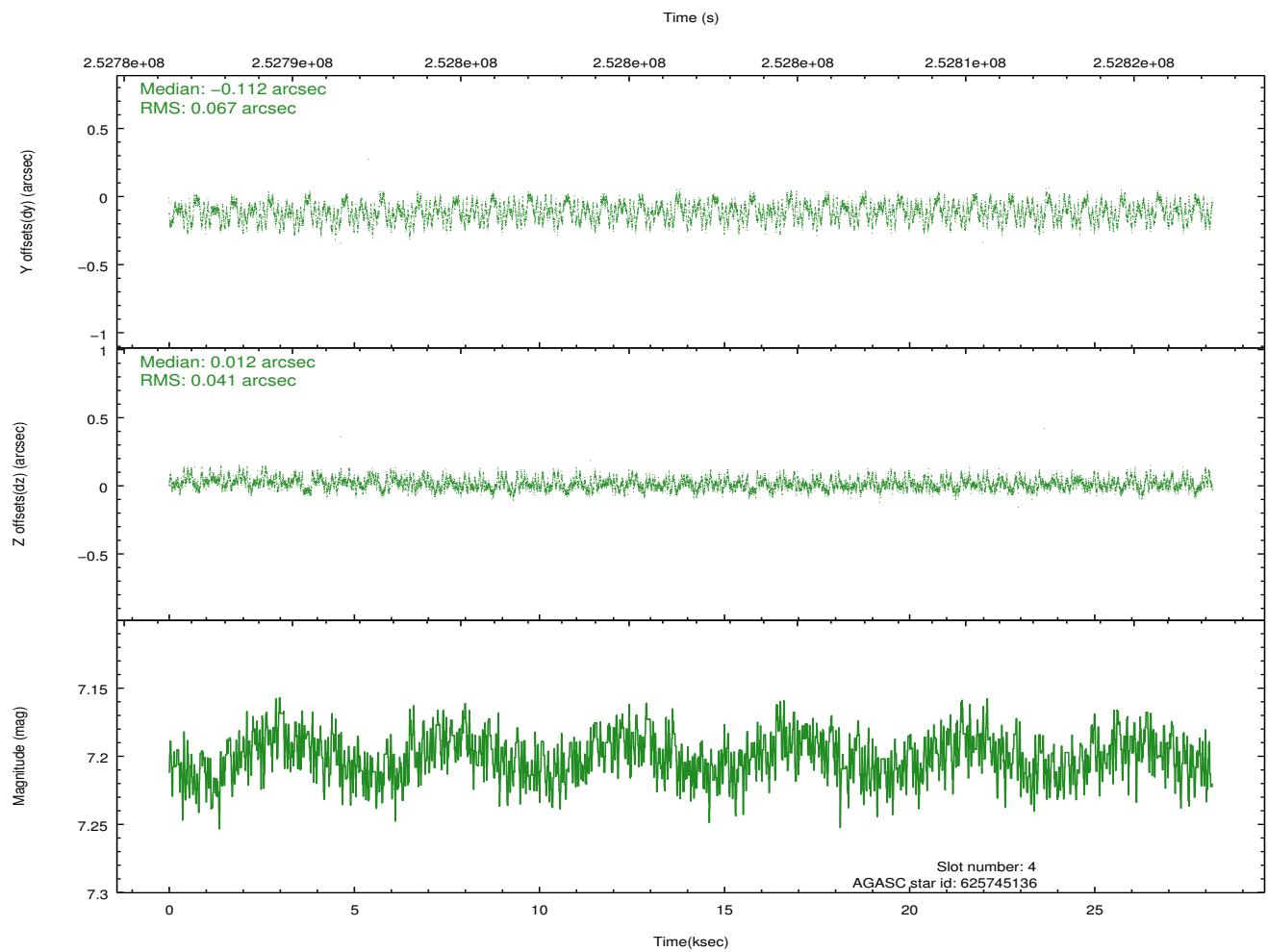
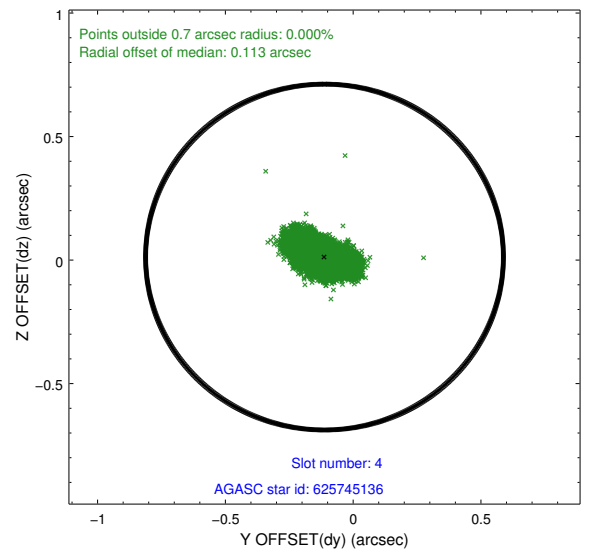
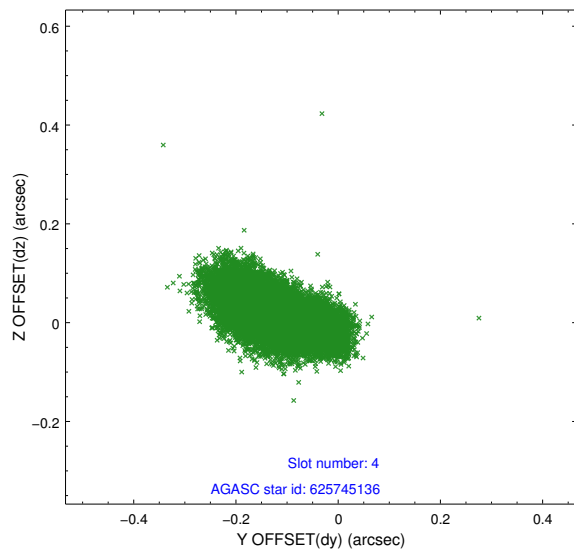
slot	status	id	mag	n_pts	med_dy	med_dz	dr1	dr2	ra	dec	mean_y	mean_z
0	FID	ACIS-S-2	7.11	6873	-0.036	-0.017	0.011	0.018	0.000000	0.000000	-761.51	-1732.08
1	FID	ACIS-S-4	7.21	6874	0.135	0.022	0.009	0.016	0.000000	0.000000	2151.86	176.41
2	FID	ACIS-S-5	7.23	6874	-0.129	0.002	0.010	0.019	0.000000	0.000000	-1814.37	170.08
3	GUIDE	625741512	9.03	13741	-0.091	0.226	0.078	0.126	83.281151	-5.340585	-1561.32	-159.35
4	GUIDE	625745136	7.20	13747	-0.112	0.012	0.085	0.136	83.600341	-4.804339	-1778.70	2074.34
5	GUIDE	626265688	9.29	13740	0.052	-0.177	0.121	0.209	83.158748	-5.995438	-521.28	-2320.24
6	GUIDE	626273040	7.12	13748	0.047	-0.115	0.078	0.127	84.062610	-5.647920	1352.04	601.03
7	GUIDE	626272976	7.96	13743	0.103	0.048	0.072	0.117	83.795875	-5.926912	1173.79	-773.25

2.4 Star Slots

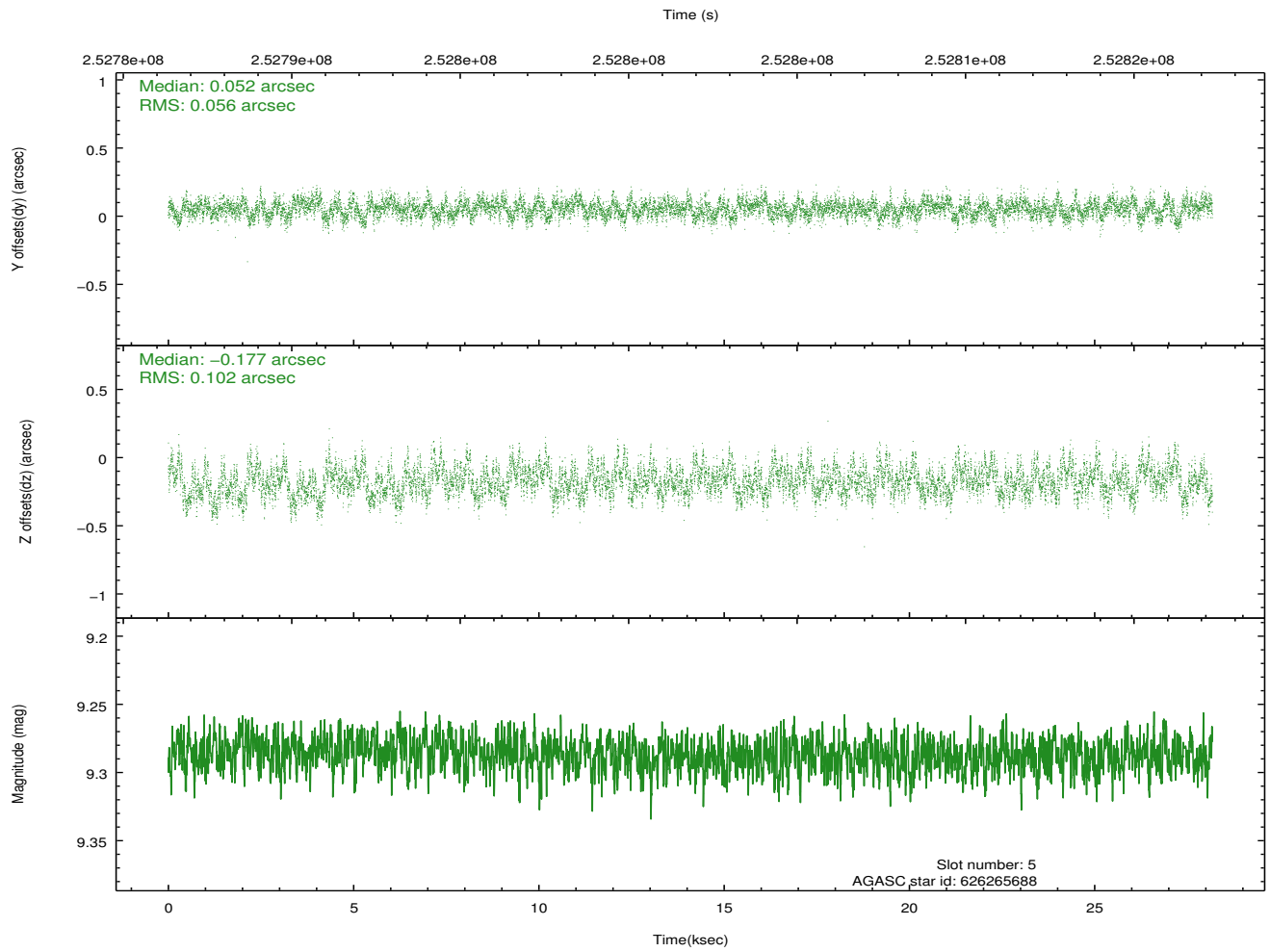
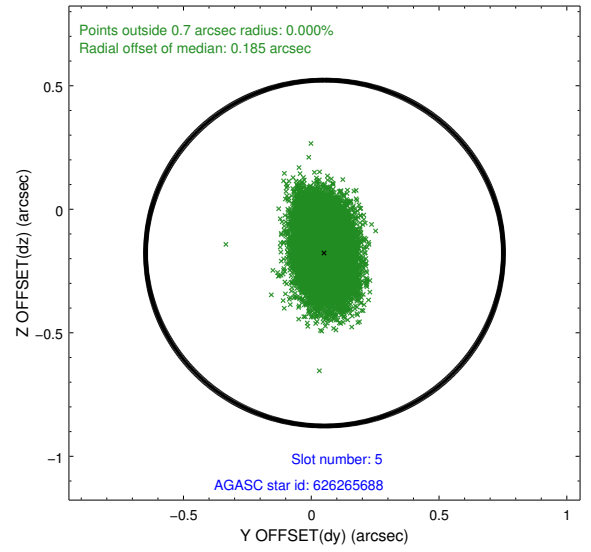
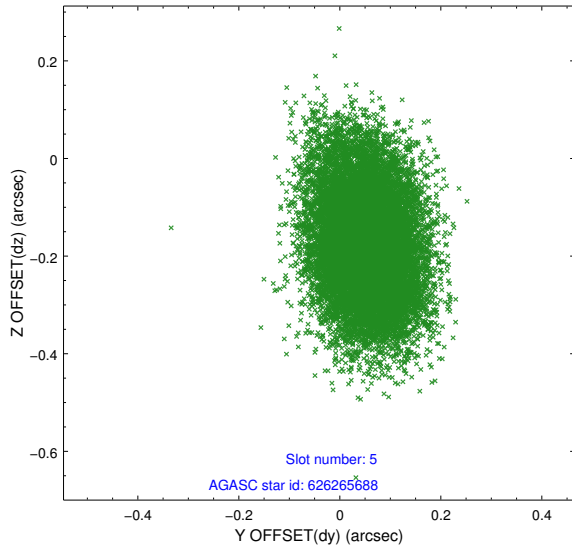
2.4.1 Slot 3



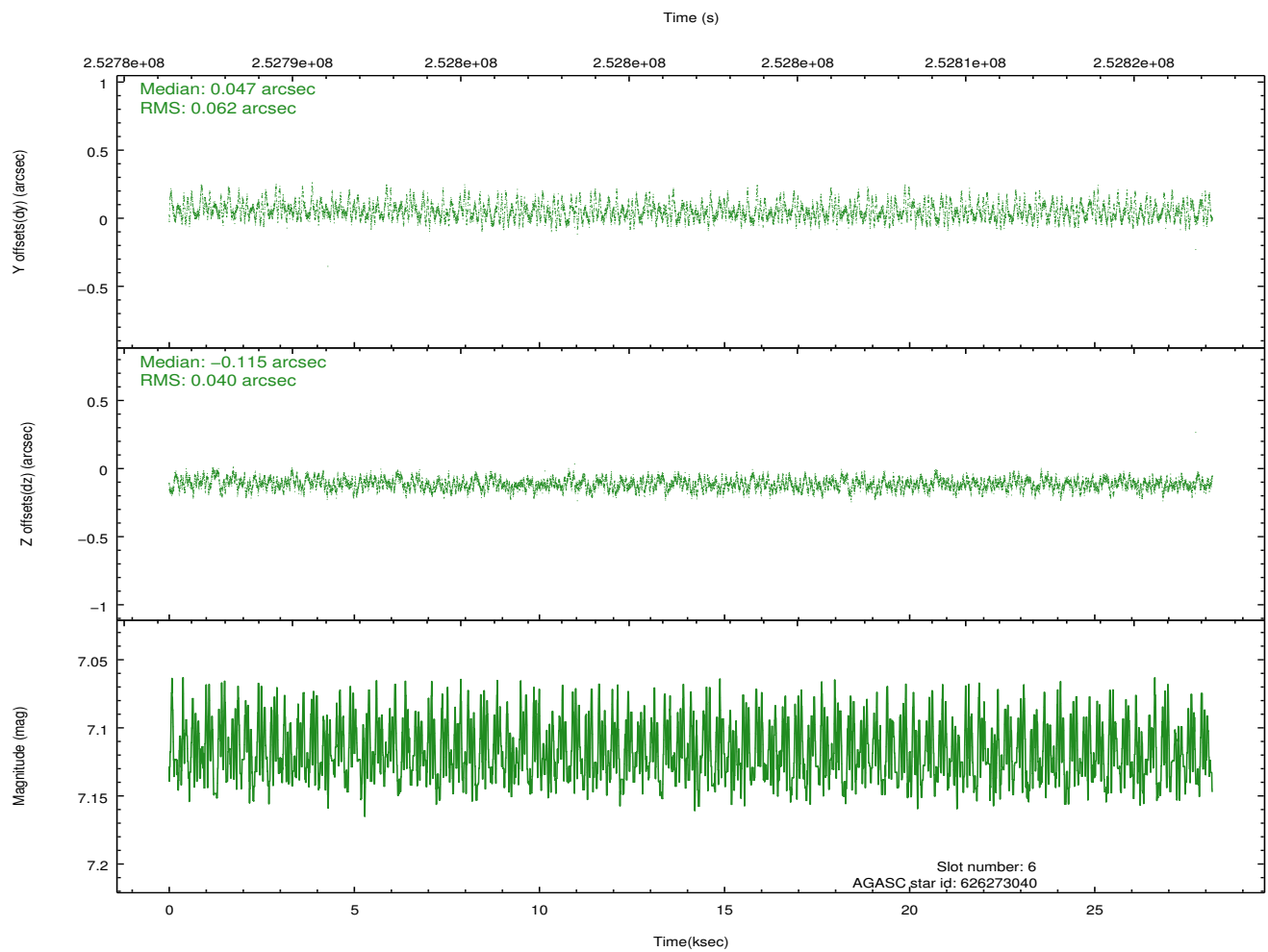
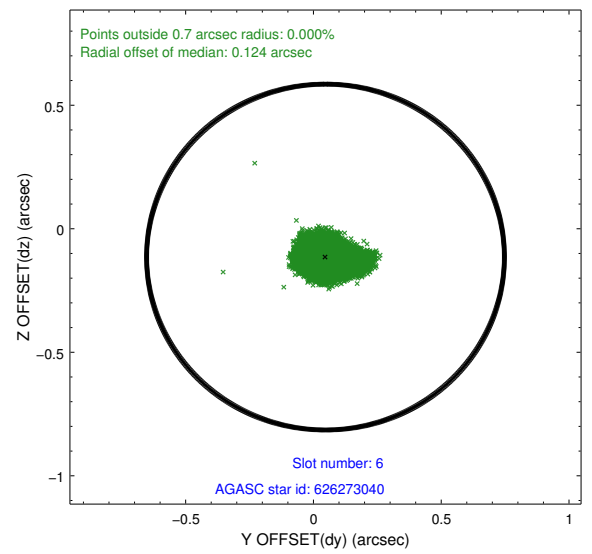
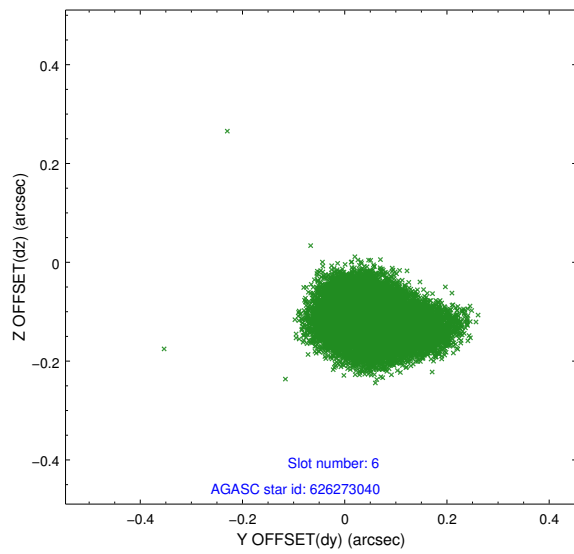
2.4.2 Slot 4



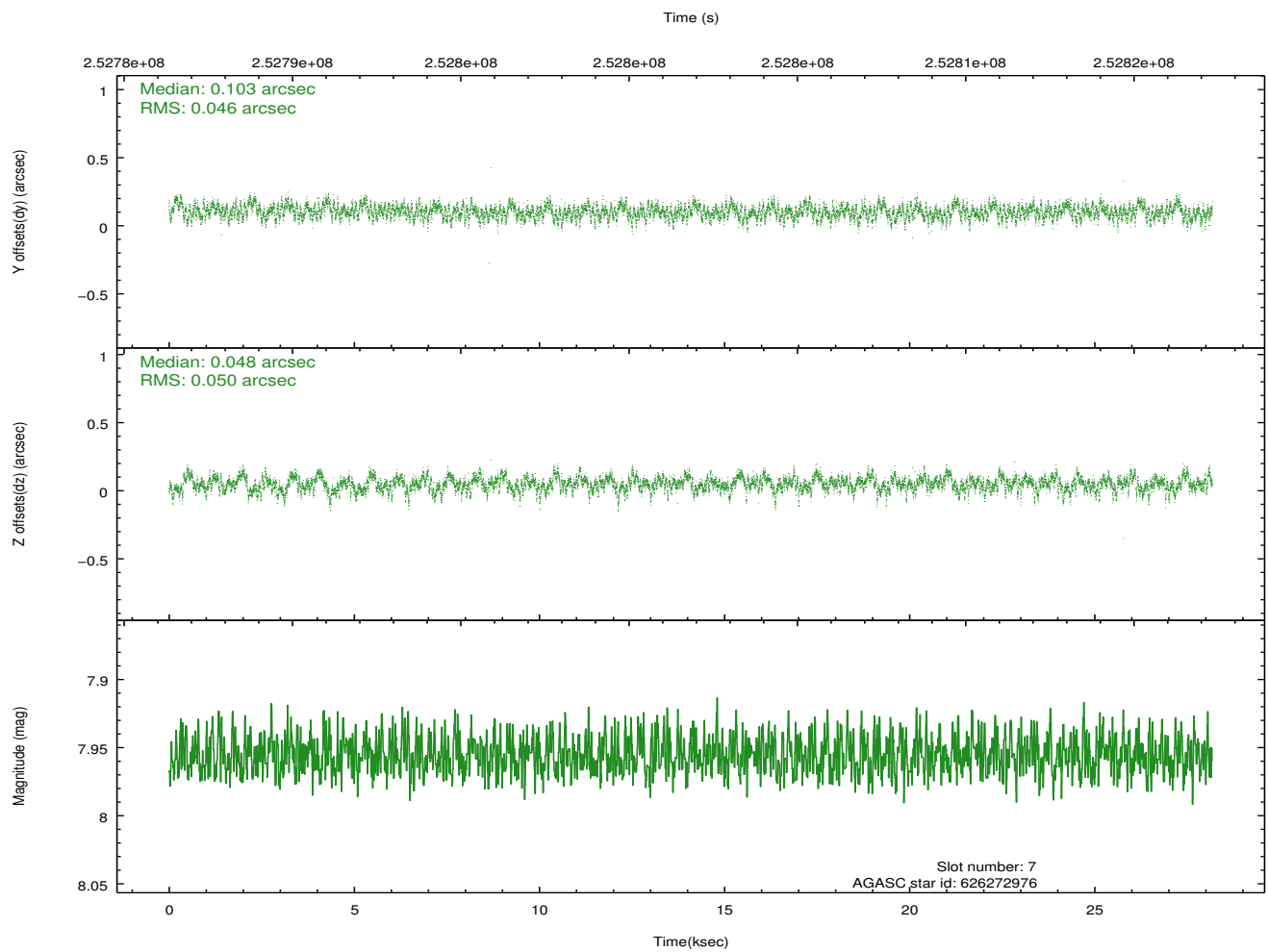
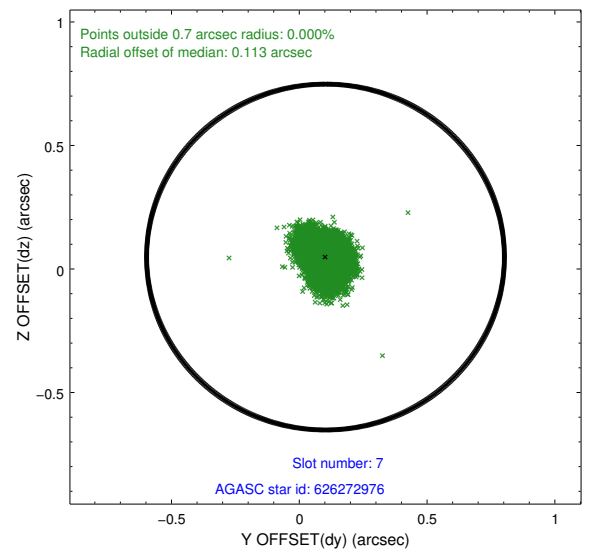
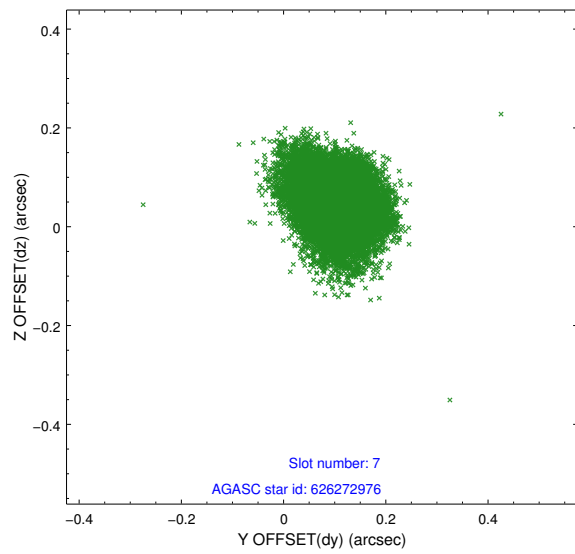
2.4.3 Slot 5



2.4.4 Slot 6

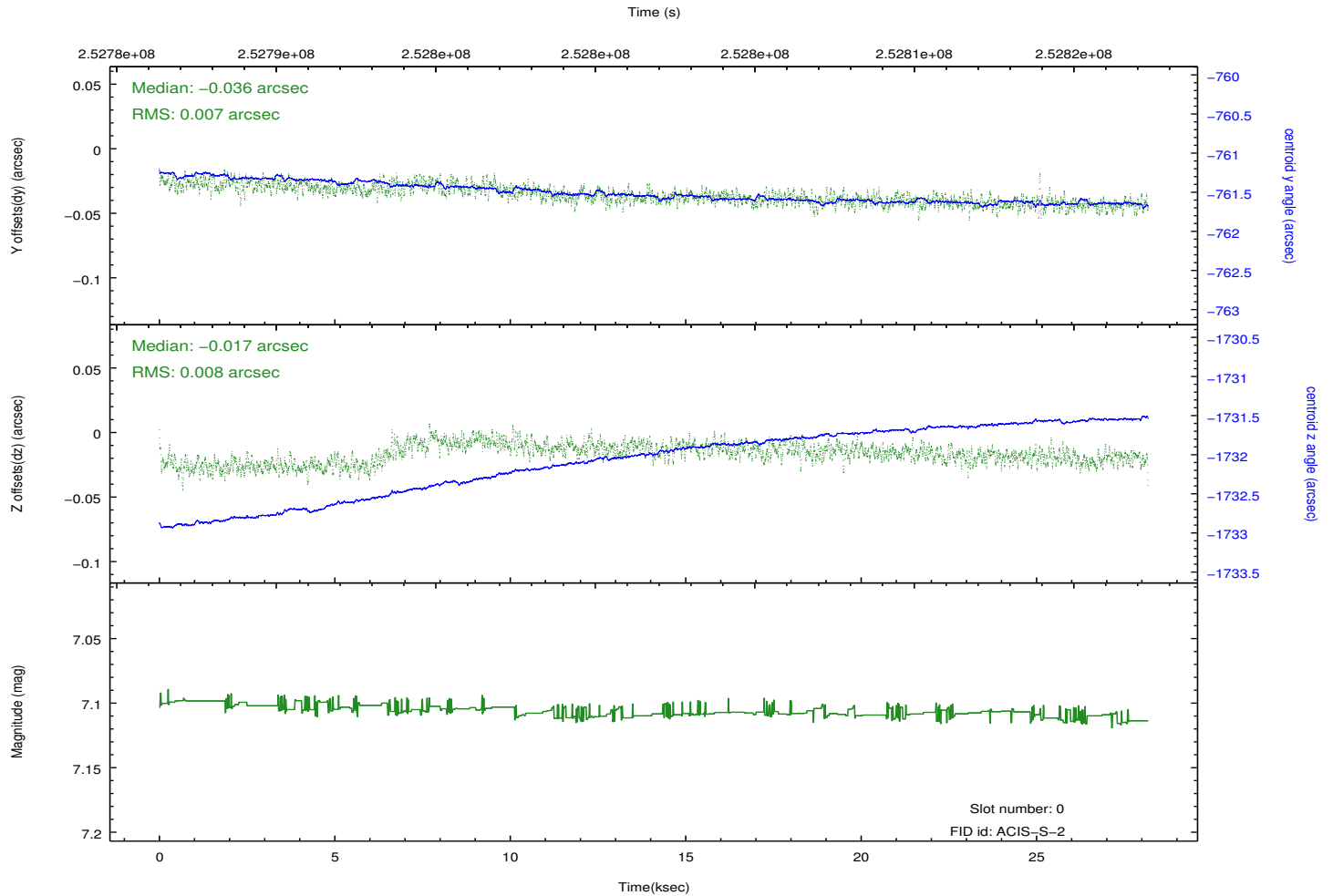
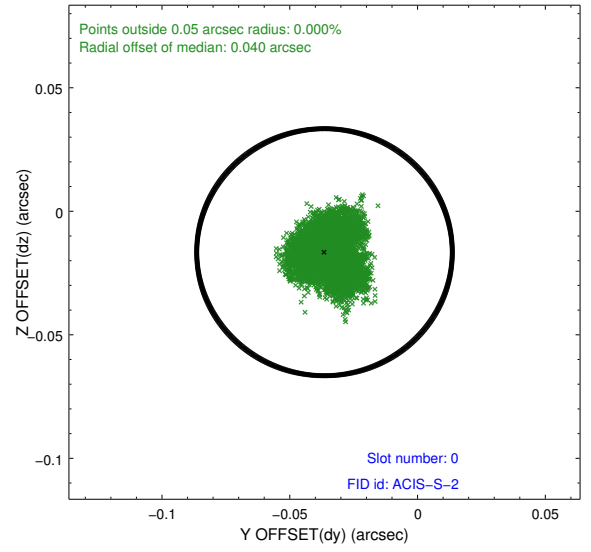
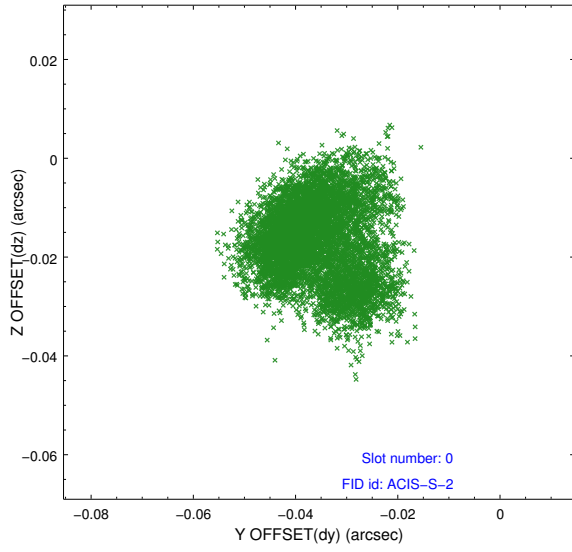


2.4.5 Slot 7

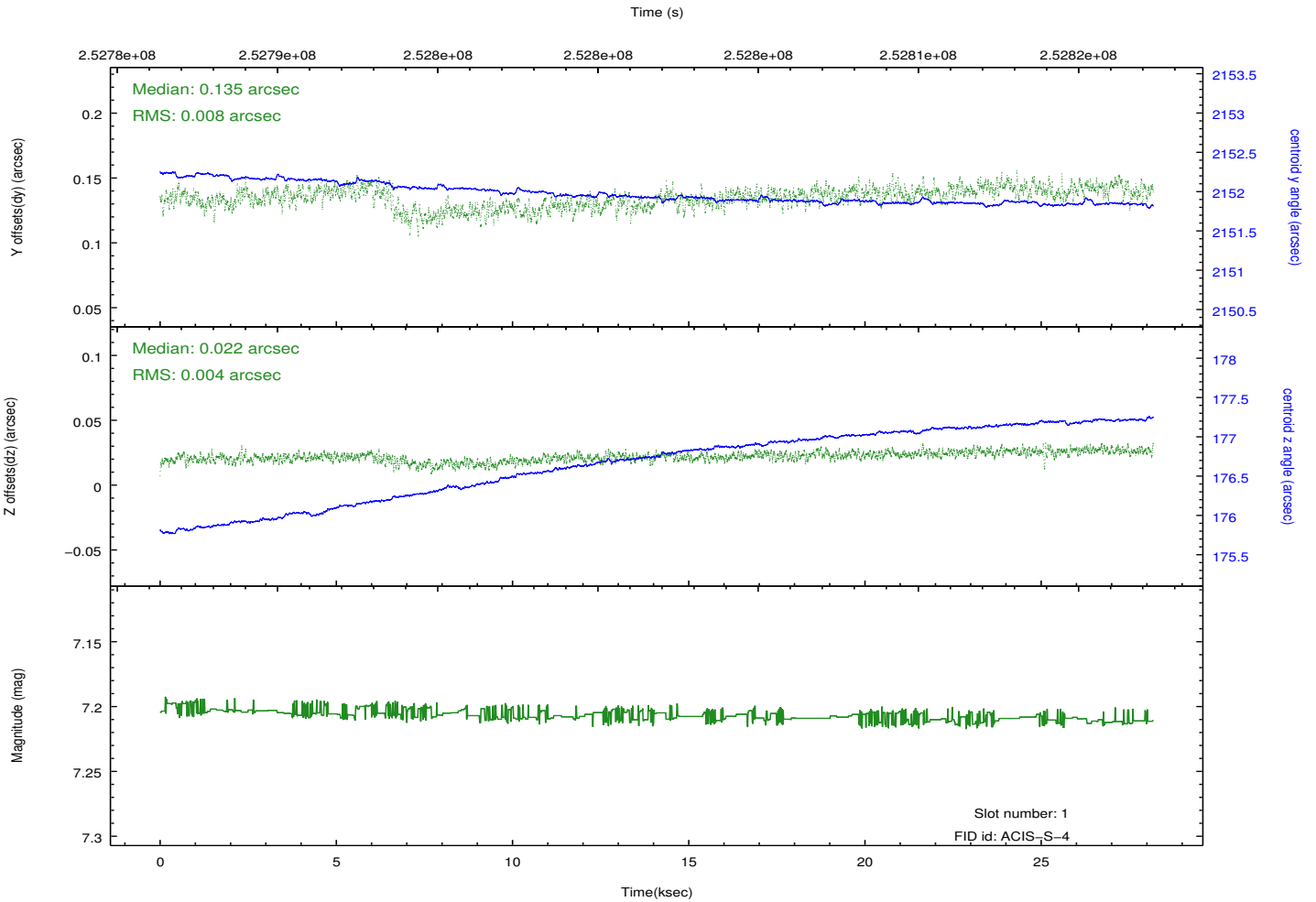
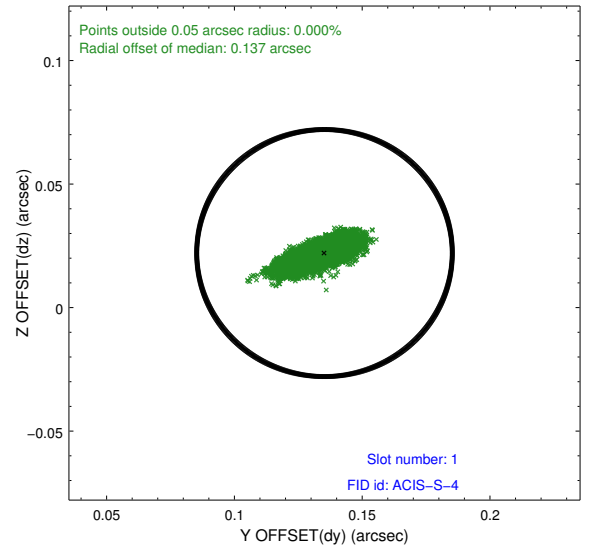
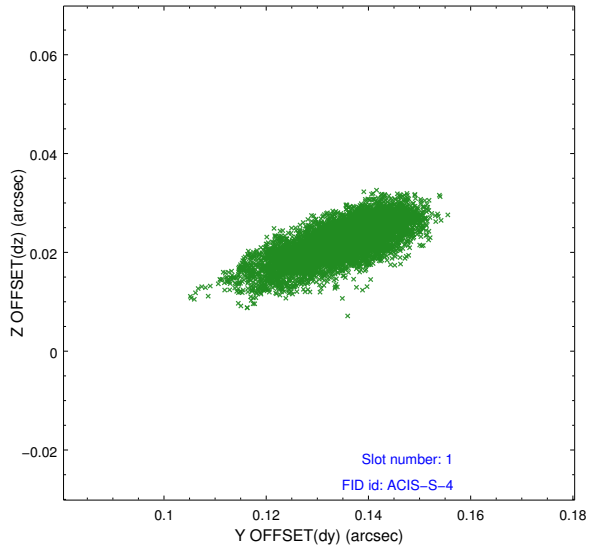


2.5 FID Slots

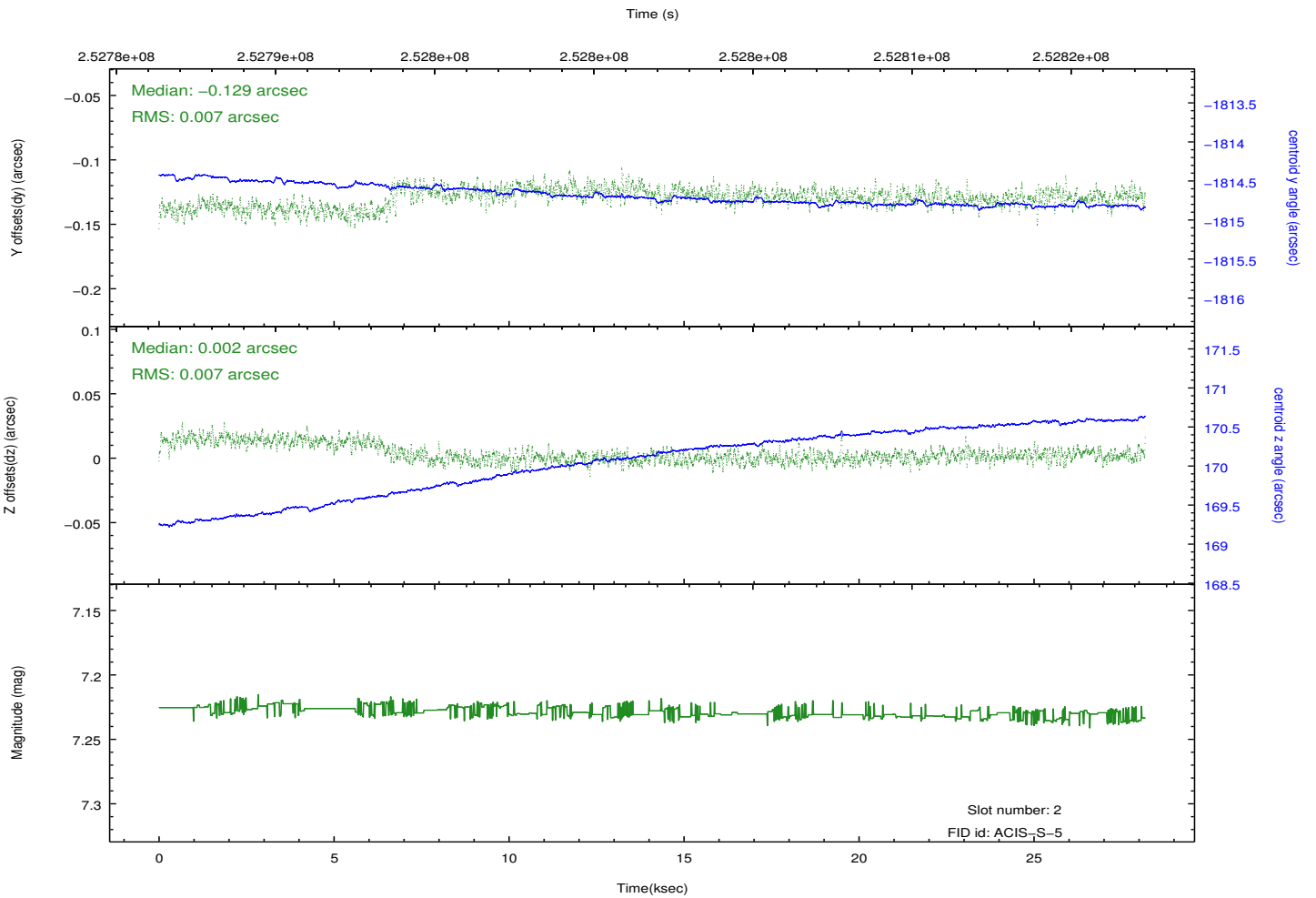
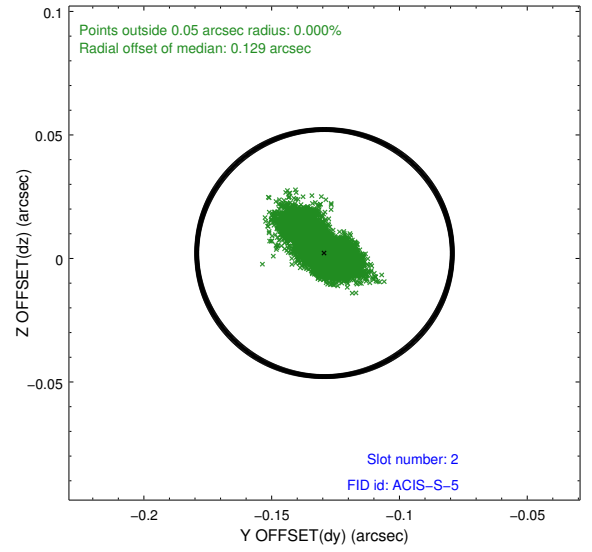
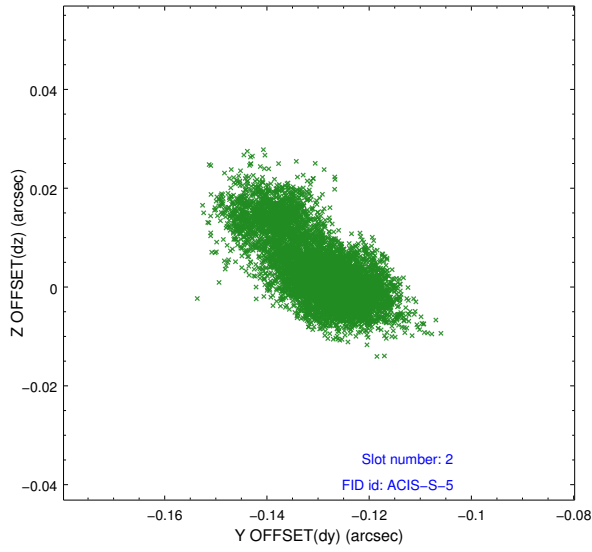
2.5.1 Slot 0



2.5.2 Slot 1



2.5.3 Slot 2



A Summary

A.1 Status

V&V Scientist	Jen Lauer
V&V Date (YYYY-MM-DD)	2012.03.22
V&V Edition	1
V&V Disposition and Status	OK
V&V Charge Time	28.17279

A.2 Comments