

V&V Reference Report

L2 ASCDS Version : 8.4.3.1

Observation 6586 - L2 Version 2
Chandra X-Ray Center

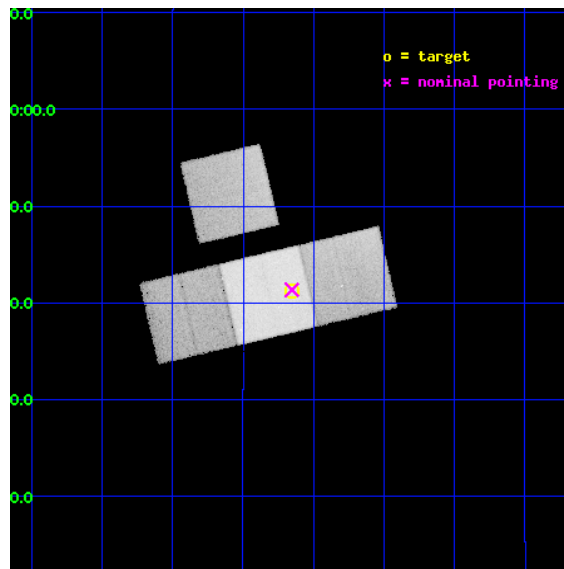
L2 Processing Date : Apr 4 2012

Contents

1	Front	2
2	OBI	3
2.1	OBI	3
2.1.1	Images	3
2.1.2	Bias	3
2.1.3	Parameters	4
2.1.4	Events	4
2.2	Compared Parameters	5
2.3	Aspect	6
2.4	Star Slots	9
2.4.1	Slot 3	9
2.4.2	Slot 4	10
2.4.3	Slot 5	11
2.4.4	Slot 6	12
2.4.5	Slot 7	13
2.5	FID Slots	14
2.5.1	Slot 0	14
2.5.2	Slot 1	15
2.5.3	Slot 2	16
A	Summary	17
A.1	Status	17
A.2	Comments	17

1 Front

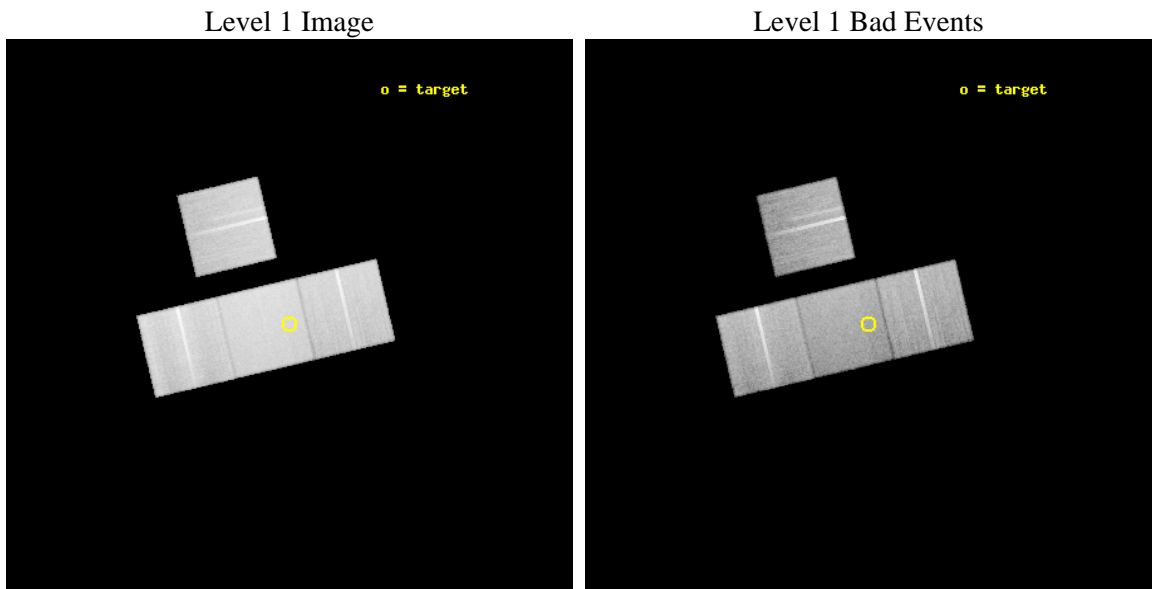
seq_num	400491	Sequence number
obs_id	6586	Observation id
title	A Large Scale X-ray Jet from GRS 1915+105	Proposal title
observer	Dr Thomas Maccarone	Principal investigator
object	IRAS 19132+1035	Source name
dtycycle	0	
cycle	P	events from which exps? Prim/Second/Both
ra_targ	288.914167	Observer's specified target RA [deg]
dec_targ	10.6875	Observer's specified target Dec [deg]
ra_nom	288.91331398659	Nominal RA [deg]
dec_nom	10.689395121707	Nominal Dec [deg]
roll_nom	166.71131038557	Nominal Roll [deg]
revision	2	Processing version of data
ontime	30011.099942267	Sum of GTIs [s]
livetime	29618.982827671	Livetime [s]
ontime3	30011.099942267	Sum of GTIs [s]
ontime6	30004.817941815	Sum of GTIs [s]
ontime7	30011.099942267	Sum of GTIs [s]
ontime8	30011.099942267	Sum of GTIs [s]
l2events	325145	Number of level 2 events



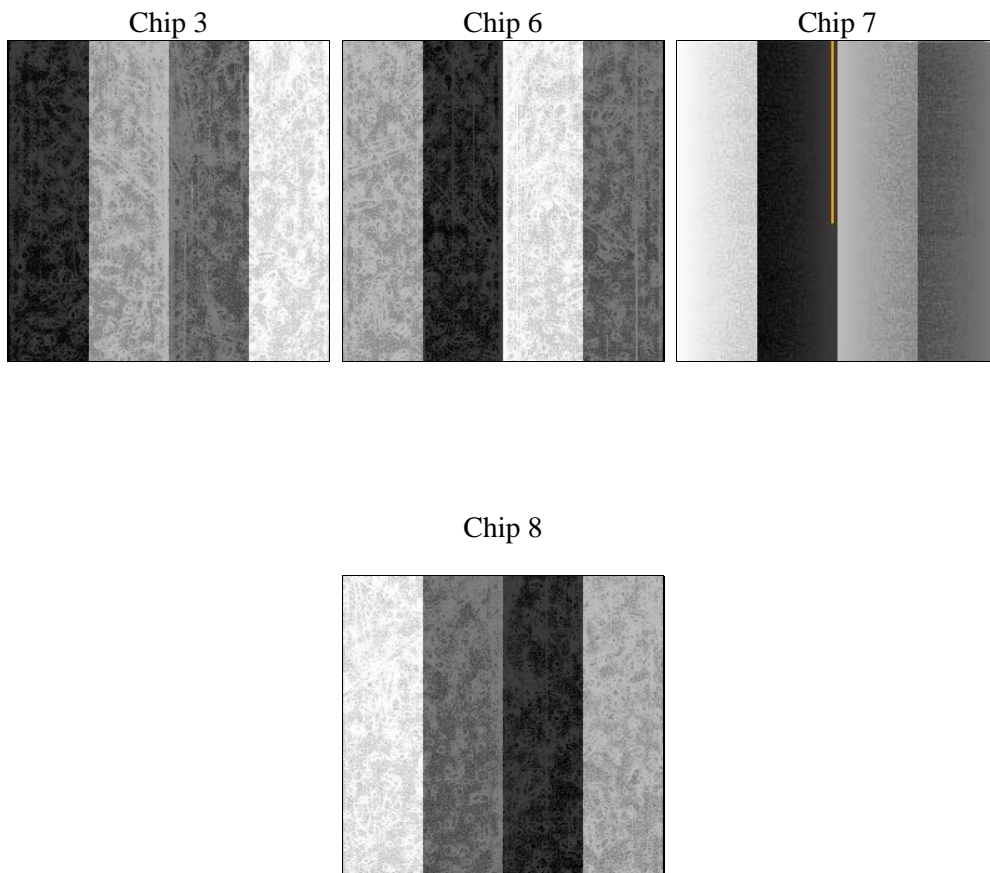
2 OBI

2.1 OBI

2.1.1 Images



2.1.2 Bias



2.1.3 Parameters

obi_num	1	Obi number	sched_exp_time	29829.624000	[s] Scheduled observation exposure time
ascdsver	8.4.3.1	Processing system revision	ontime	30011.099942267	Sum of GTIs [s]
caldsver	4.4.9	 	ontime3	30011.099942267	Sum of GTIs [s]
date	2012-04-04T20:09:14	Date and time of file creation	ontime6	30004.817941815	Sum of GTIs [s]
revision	2	Processing version of data	ontime7	30011.099942267	Sum of GTIs [s]
			ontime8	30011.099942267	Sum of GTIs [s]
			l1events	1440066	Number of level 1 events

2.1.4 Events

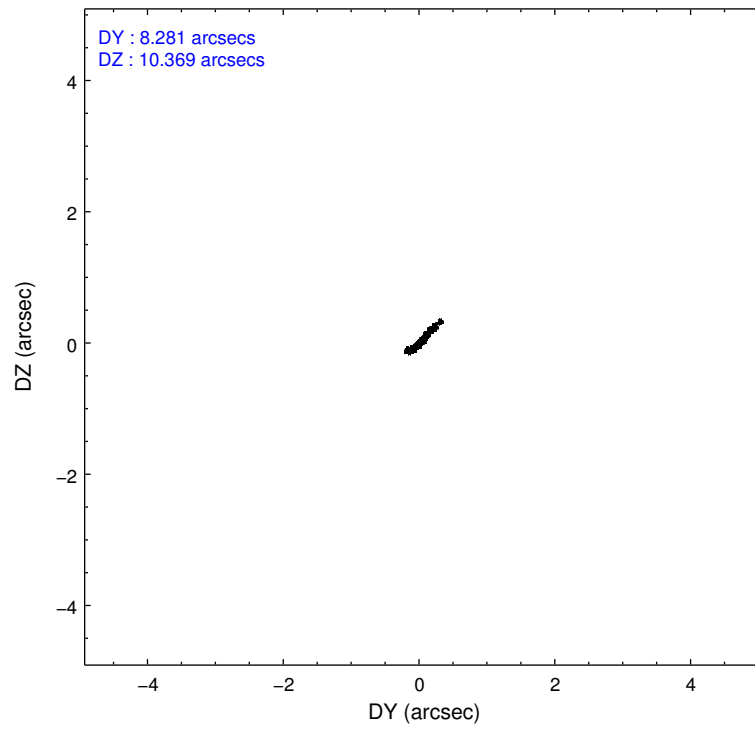
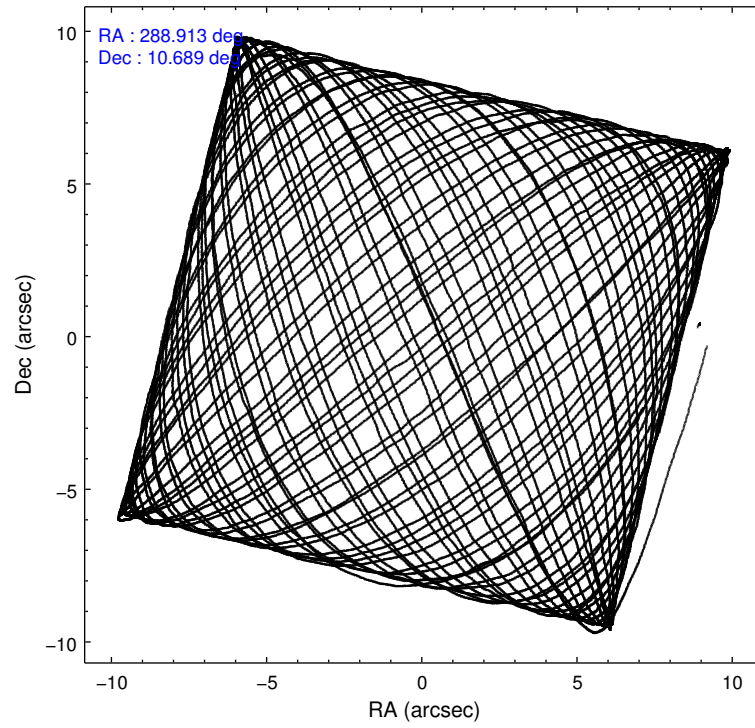
	ccd 3	ccd 6	ccd 7	ccd 8
level 1 events	325240	334631	410521	369674
rejected events	264900	269952	236356	287116
rejected %	81%	80%	57%	77%

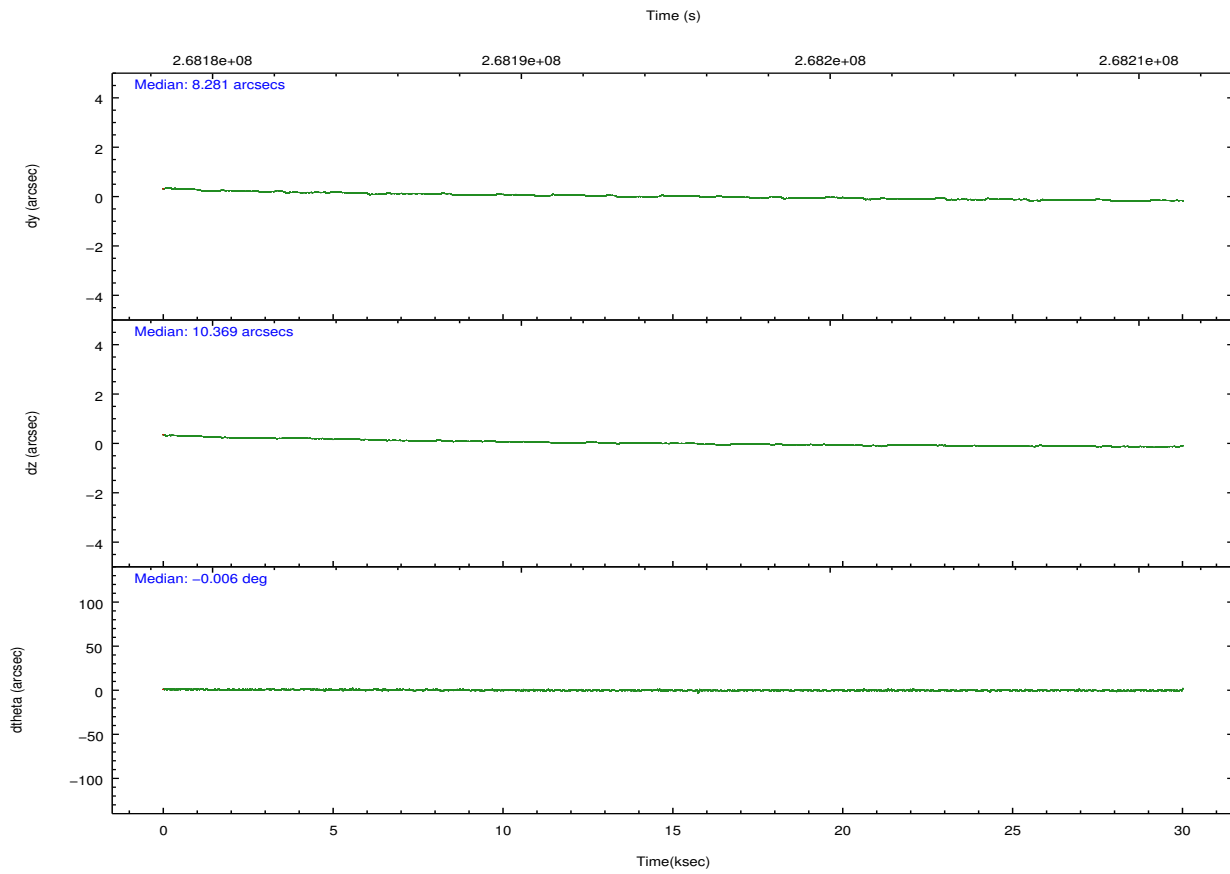
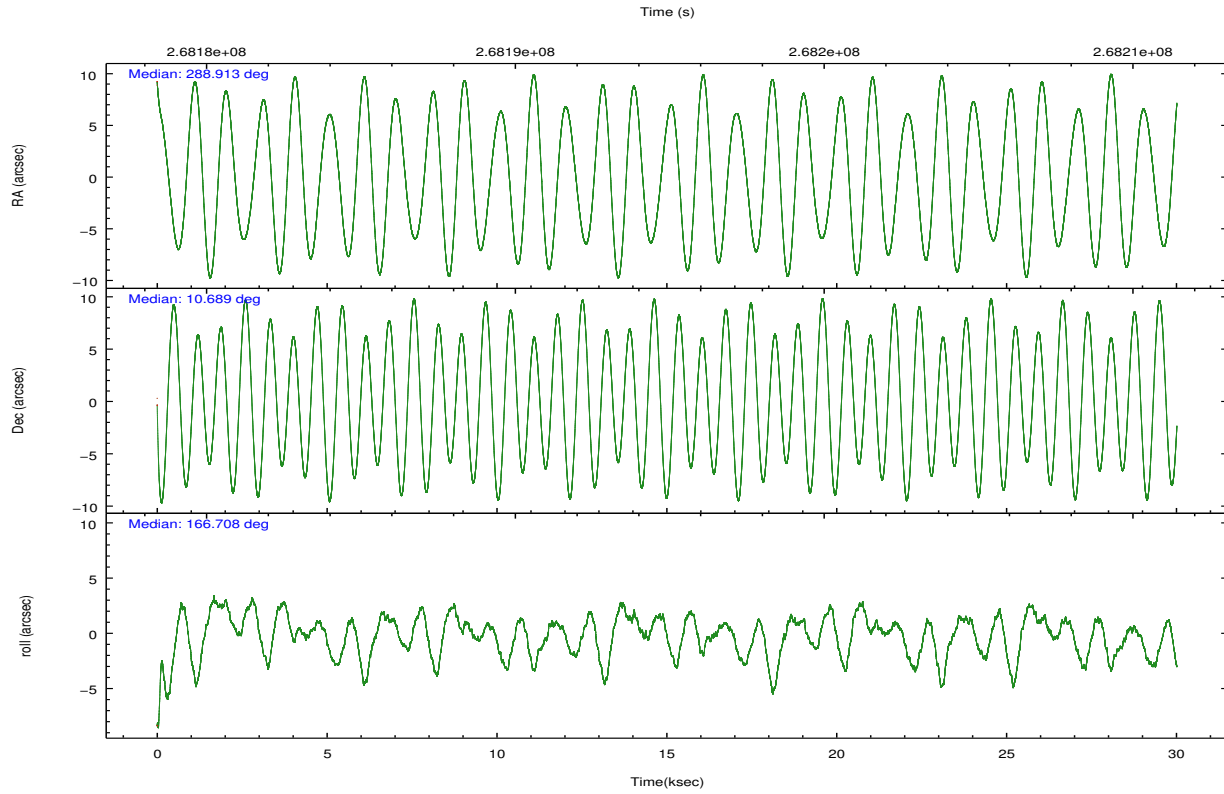
	ccd 3	ccd 6	ccd 7	ccd 8
grade 0 events	39403	37172	17772	29578
	12%	11%	4%	8%
grade 1 events	1037	284	402	282
	0%	0%	0%	0%
grade 2 events	11200	11597	37360	18633
	3%	3%	9%	5%
grade 3 events	5105	4695	16321	8541
	1%	1%	3%	2%
grade 4 events	5011	4553	16092	8302
	1%	1%	3%	2%
grade 5 events	13940	13473	37684	17805
	4%	4%	9%	4%
grade 6 events	7985	8565	94266	21149
	2%	2%	22%	5%
grade 7 events	241559	254292	190624	265384
	74%	75%	46%	71%

2.2 Compared Parameters

Parameter	Planned	Actual	Parameter	Planned	Actual
Instrument	ACIS	ACIS	Obspar format version number	7	7
Detector	ACIS-3678	ACIS-3678	Obspar file type	PREDICTED	ACTUAL
Grating	NONE	NONE	Obspar update status	NONE	UPDATED
Data mode	FAINT	FAINT	Number of optional ACIS chips dropped	0	0
Observation mode	POINTING	POINTING	On-chip summing requested	N	N
[deg] Pointing RA	288.939761	288.9133139865916	Subarray requested	NONE	NONE
[deg] Pointing Dec	10.697601	10.68939512170707	Alternating exposures requested	N	N
[deg] Pointing Roll	166.549773	166.7113103855681	[s] Primary exposure time	0.000000	3.1
[mm] SIM focus pos	-0.684267	-0.6828225247311905			
[mm] SIM defocus	0	0.001444936568705701			
[mm] SIM translation stage pos	-190.132523	-190.1425803651734			
[mm] SIM translation stage offset	0	0.01005778216563158			
[s] Observation start time (MET)	268180088.184000	268178435.41027			
Observation start date	2006-07-01T22:27:03	2006-07-01T22:00:35			
[s] Observation end time (MET)	268209918.184000	268210143.27425			
Observation end date	2006-07-02T06:44:13	2006-07-02T06:49:03			
Read mode	TIMED	TIMED			

2.3 Aspect



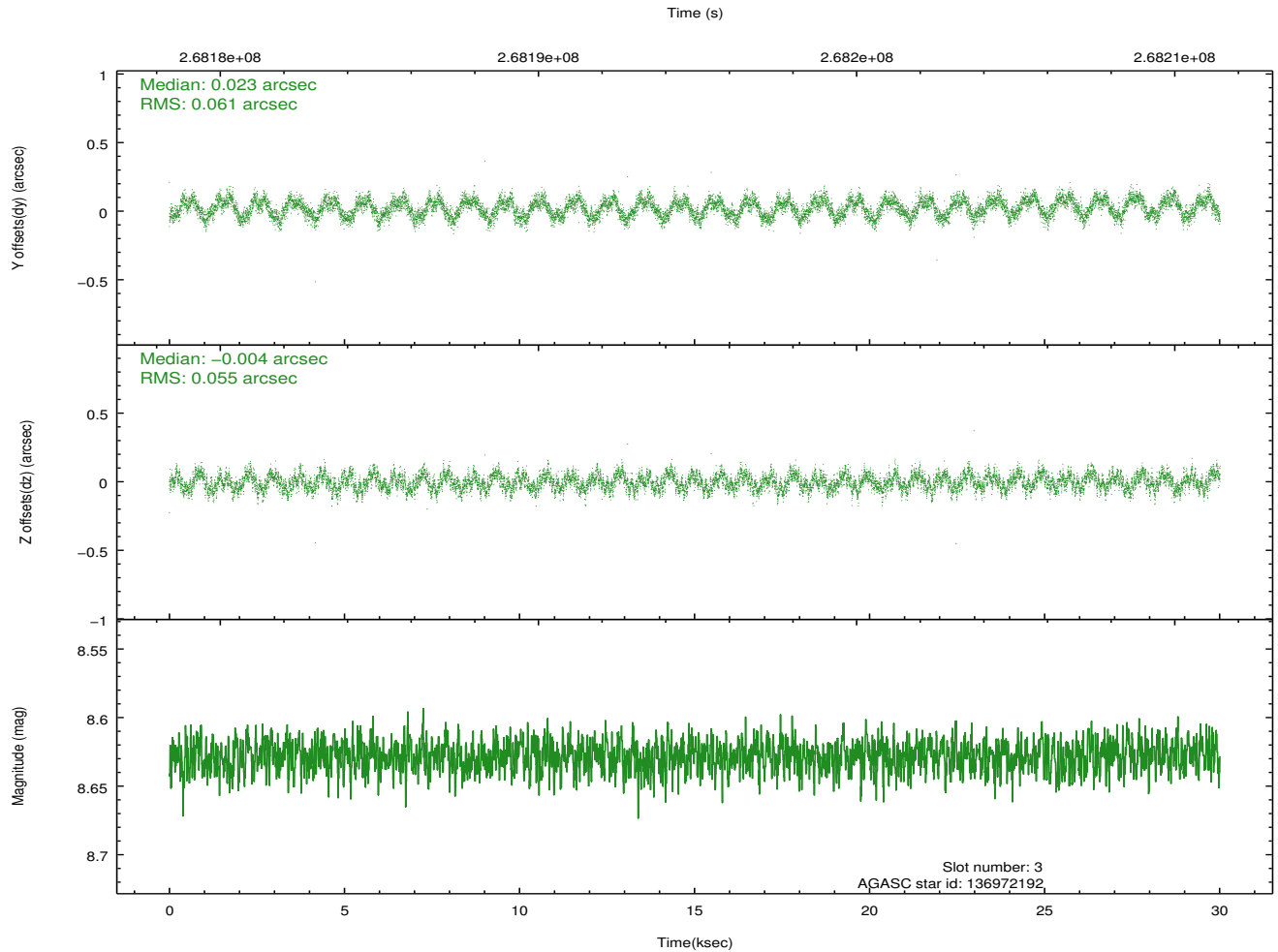
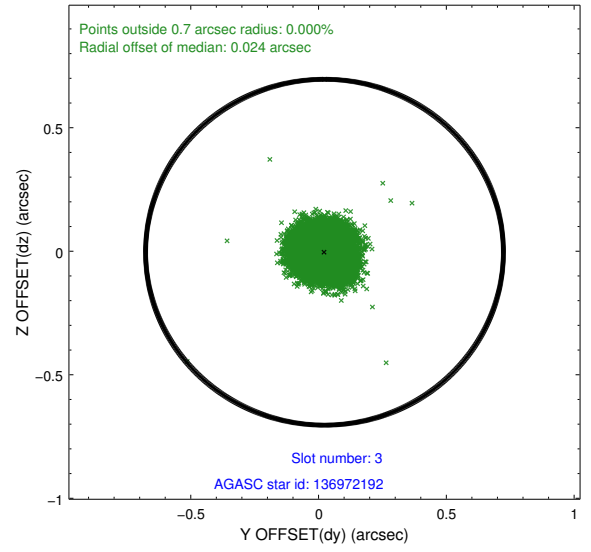
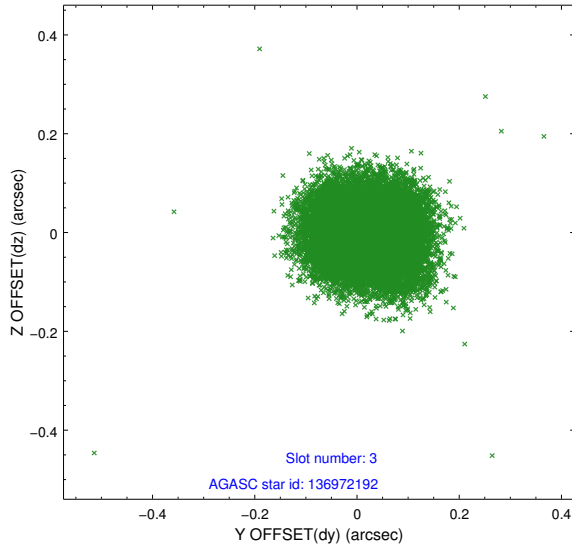


Slot Statistics

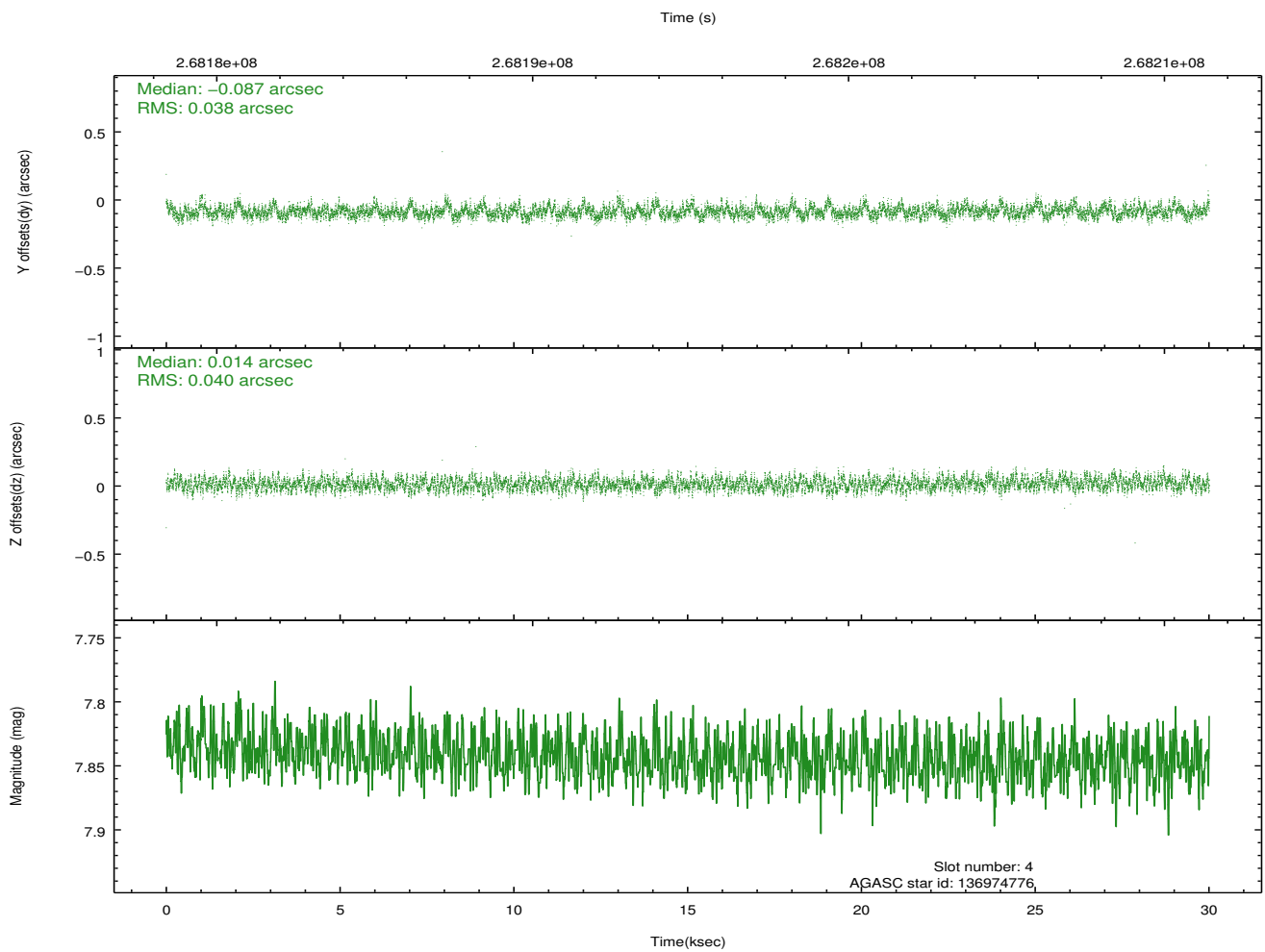
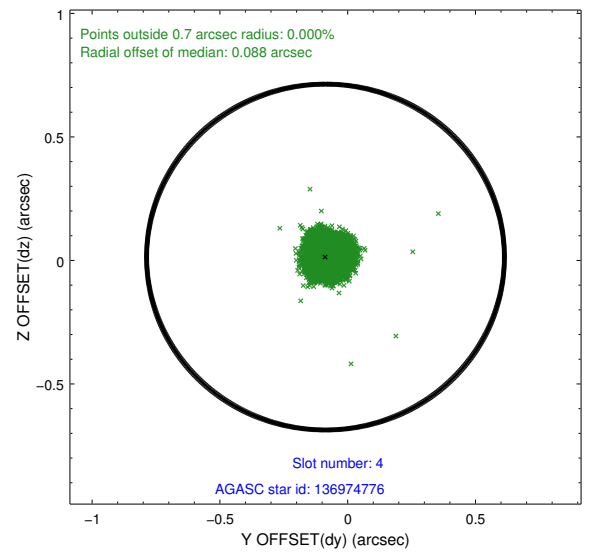
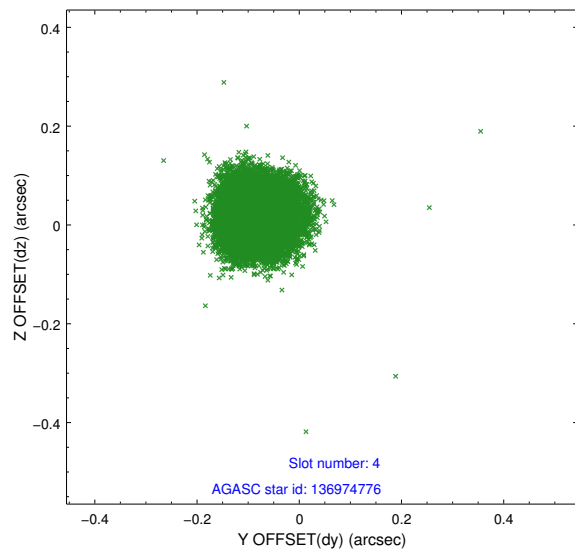
slot	status	id	mag	n_pts	med_dy	med_dz	dr1	dr2	ra	dec	mean_y	mean_z
0	FID	ACIS-S-1	7.19	7322	0.083	-0.049	0.010	0.015	0.000000	0.000000	935.05	-1727.27
1	FID	ACIS-S-2	7.11	7321	-0.026	0.008	0.011	0.019	0.000000	0.000000	-760.92	-1731.86
2	FID	ACIS-S-5	7.23	7322	-0.082	0.049	0.010	0.017	0.000000	0.000000	-1814.31	170.29
3	GUIDE	136972192	8.63	14639	0.023	-0.004	0.089	0.134	288.510925	10.645719	1432.59	533.74
4	GUIDE	136974776	7.84	14640	-0.087	0.014	0.059	0.095	288.742109	10.409402	439.49	1171.82
5	GUIDE	136977584	8.41	14635	-0.077	-0.102	0.059	0.095	288.635599	10.555283	927.96	748.32
6	GUIDE	137102976	8.53	14580	0.070	0.067	0.091	0.143	289.193436	10.979652	-635.32	-1196.26
7	GUIDE	137108368	9.24	14630	0.067	0.022	0.077	0.124	289.421925	10.352056	-1949.61	811.36

2.4 Star Slots

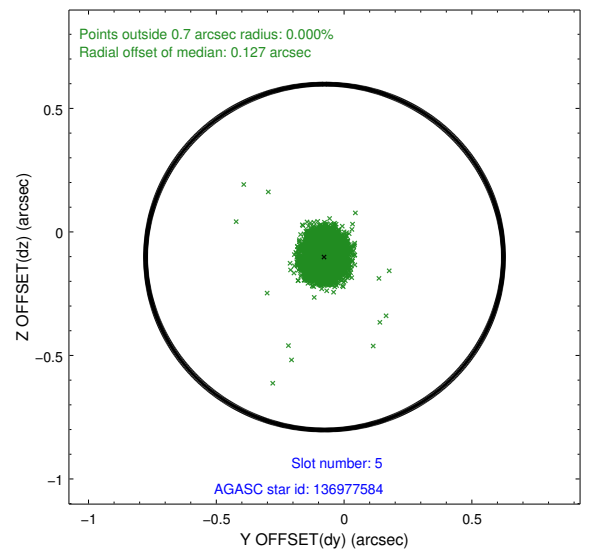
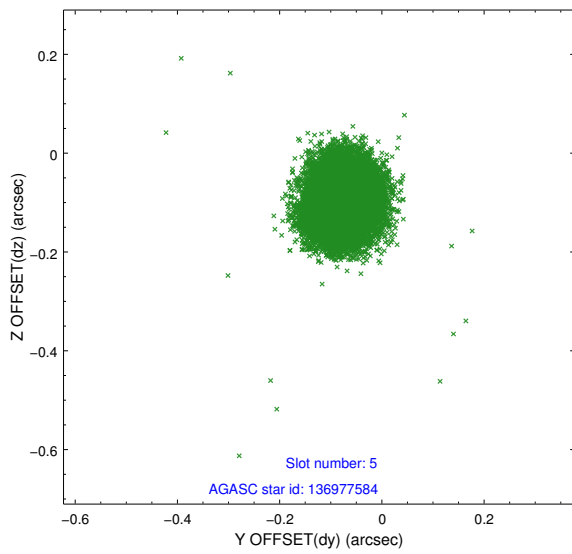
2.4.1 Slot 3



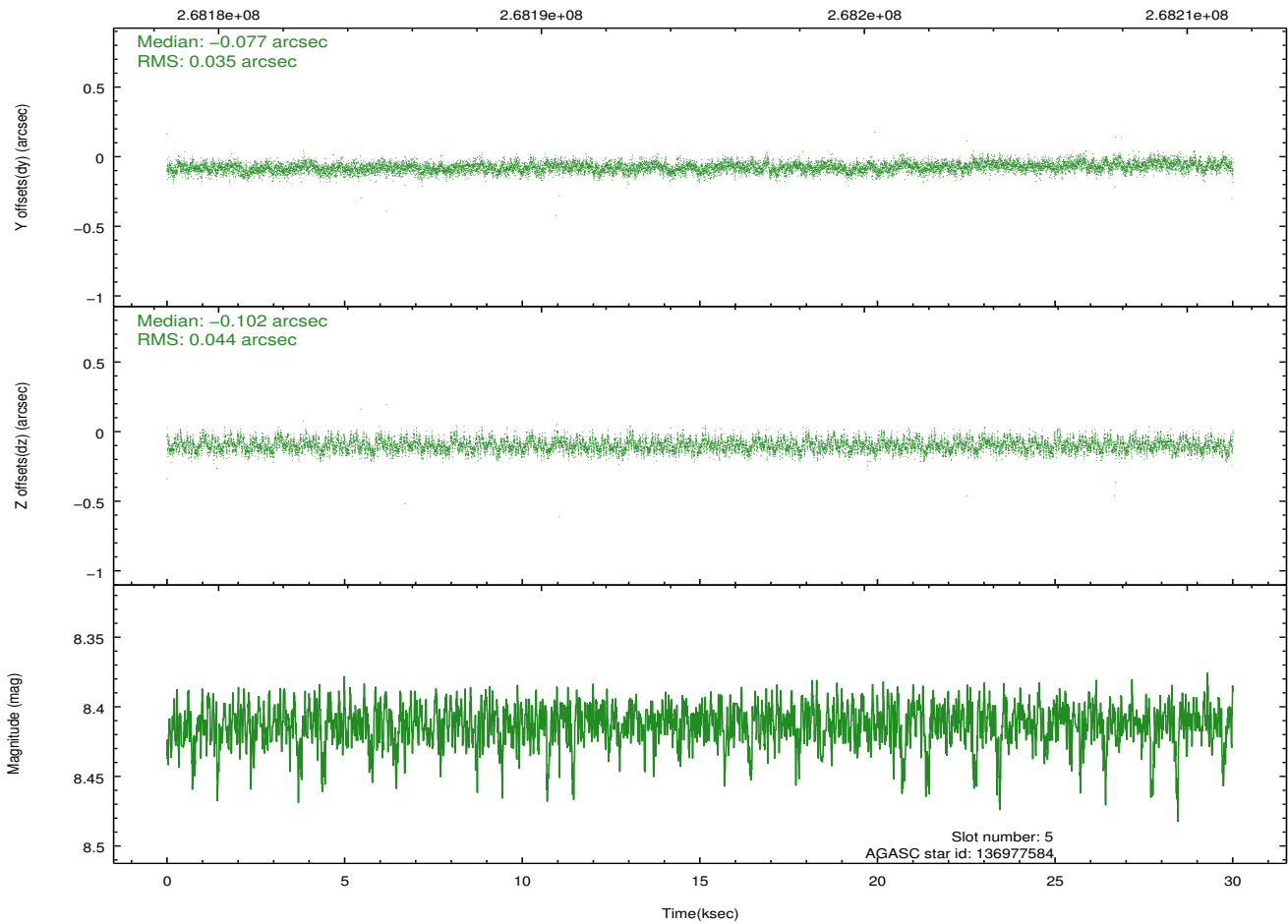
2.4.2 Slot 4



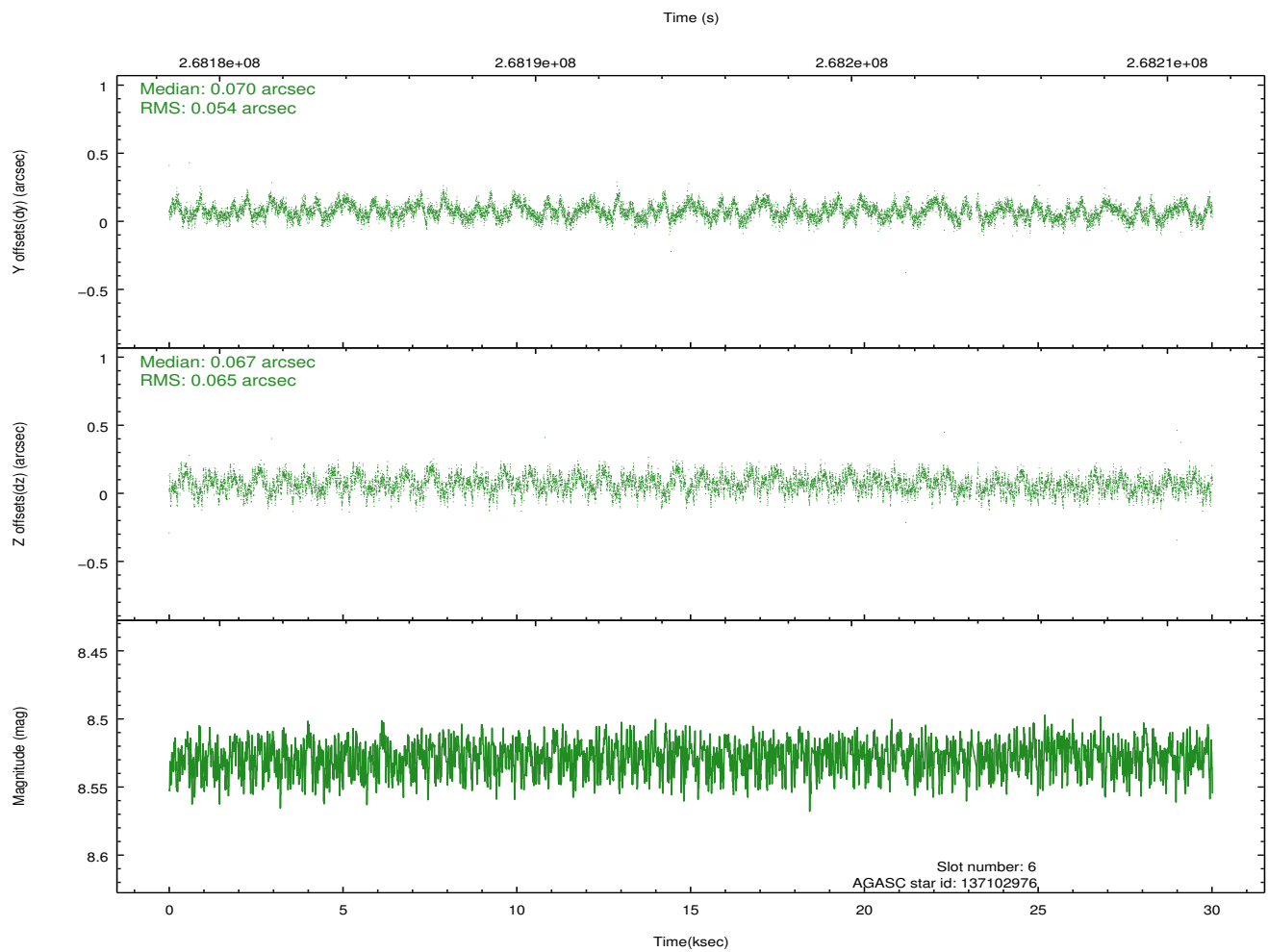
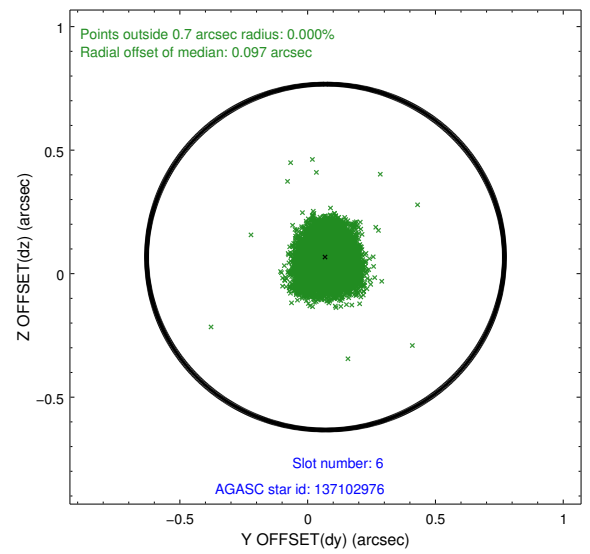
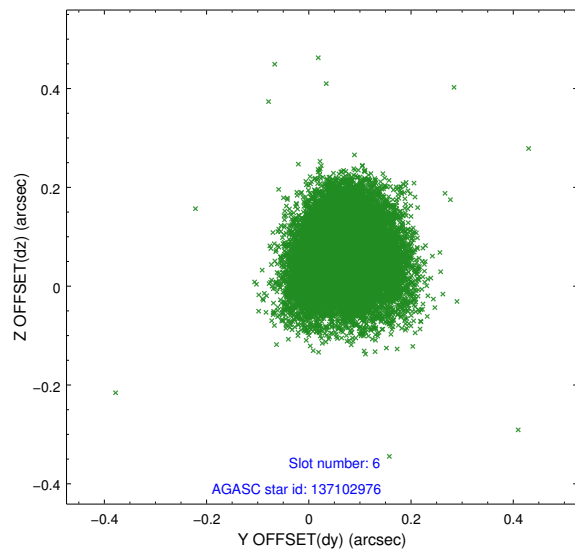
2.4.3 Slot 5



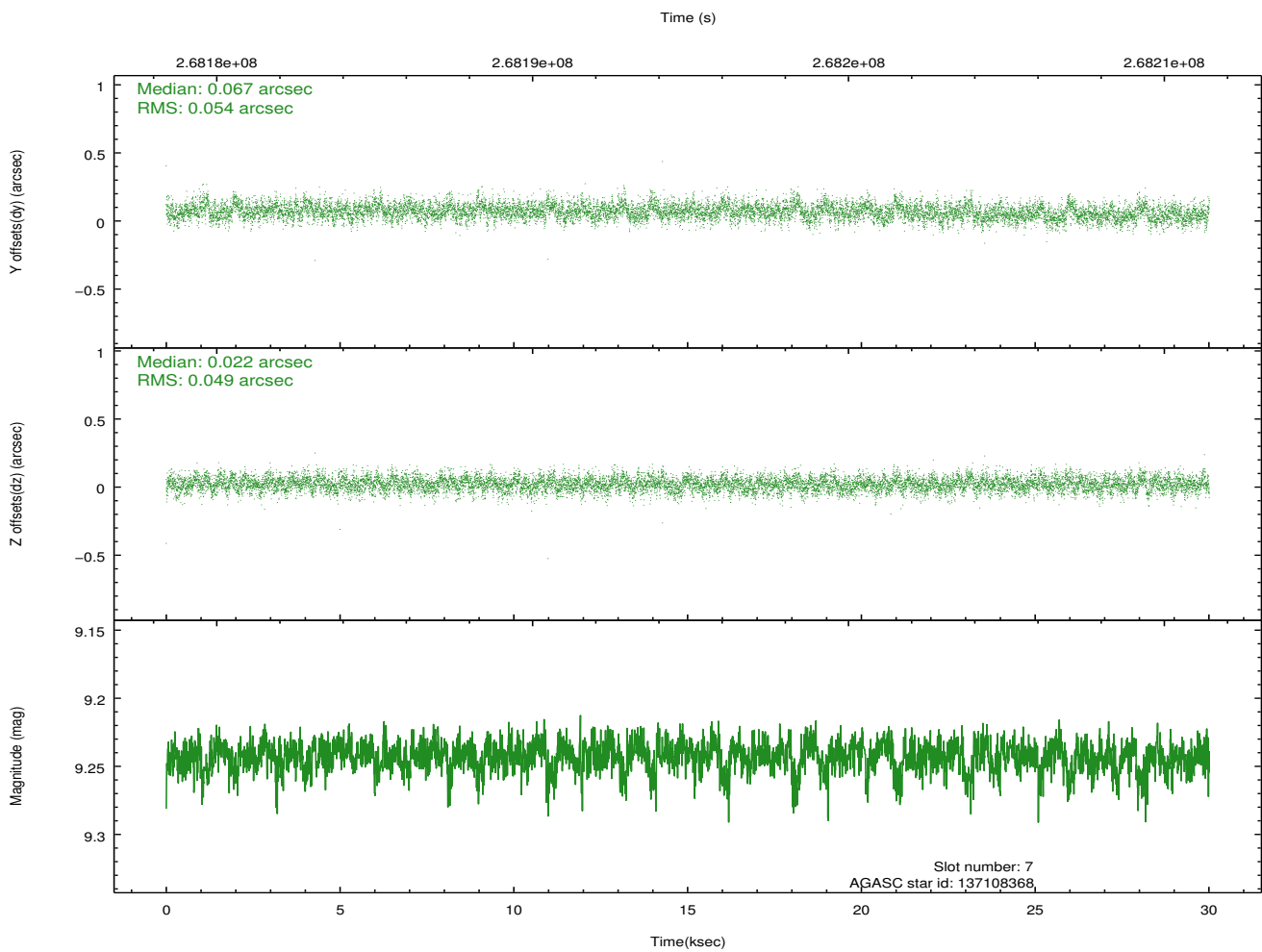
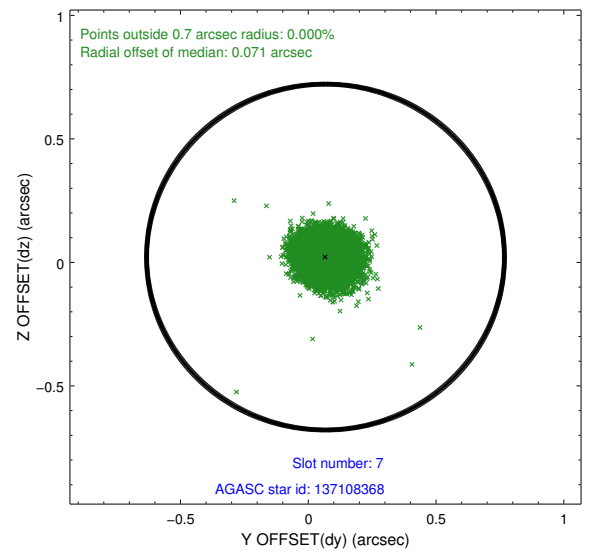
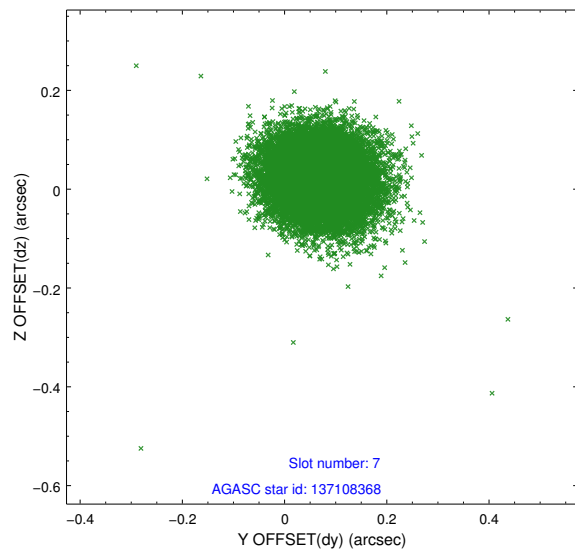
Time (s)



2.4.4 Slot 6

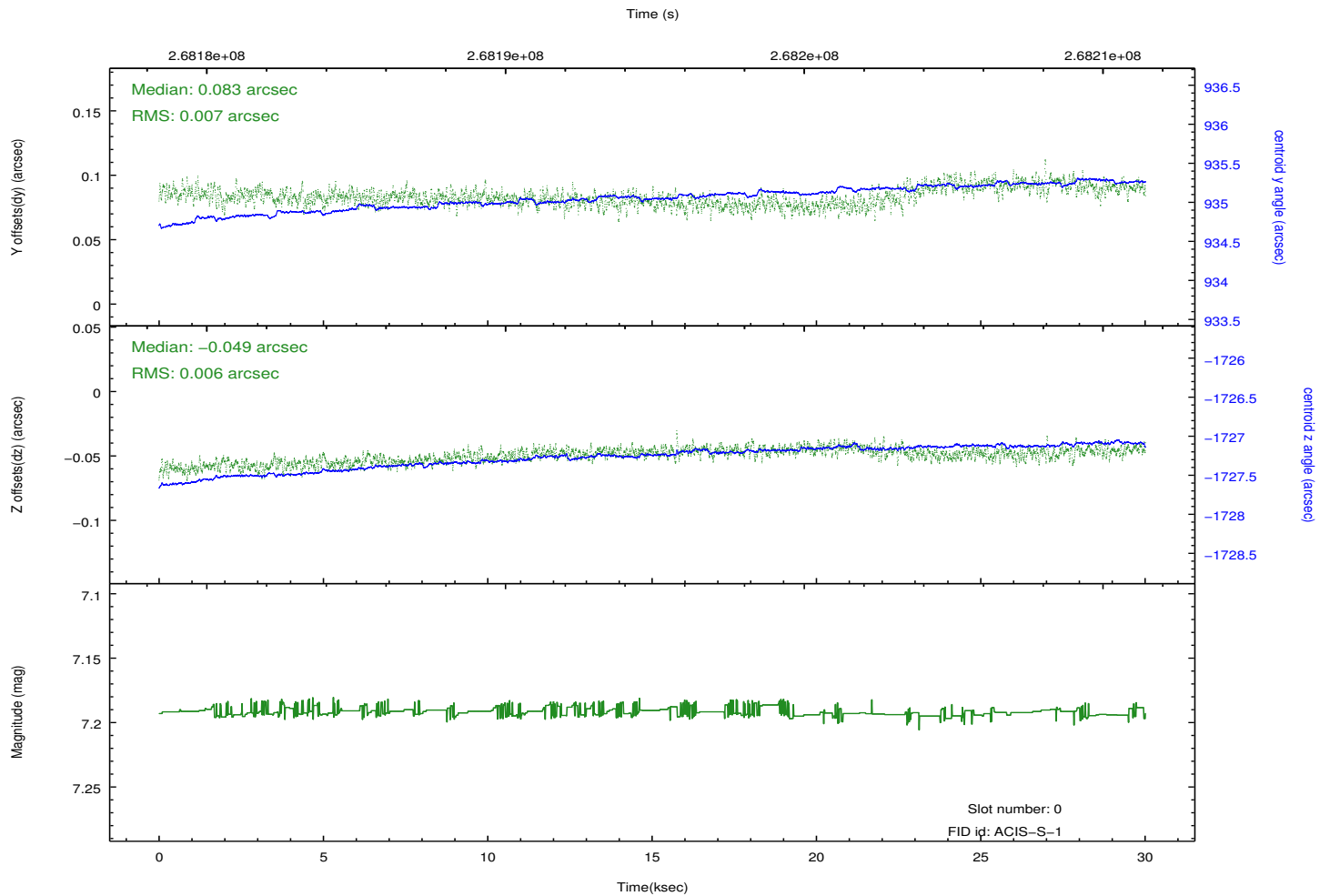
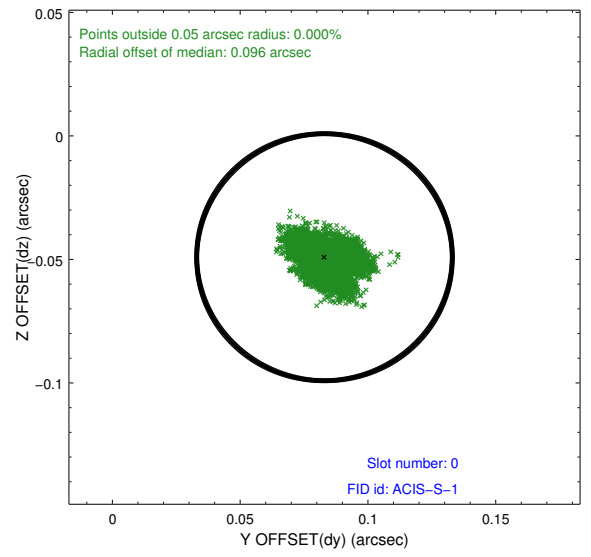
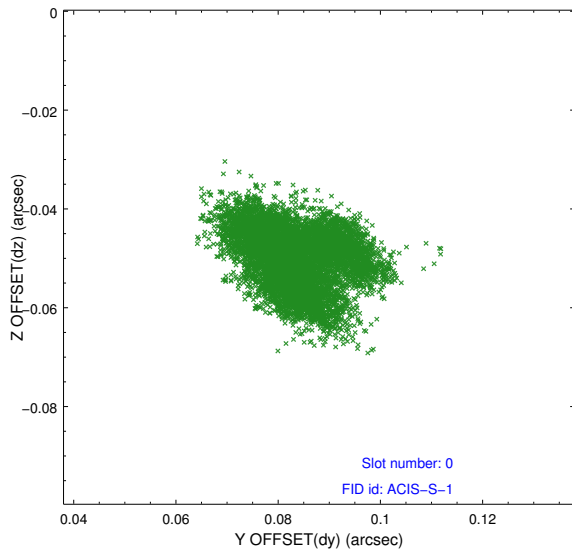


2.4.5 Slot 7

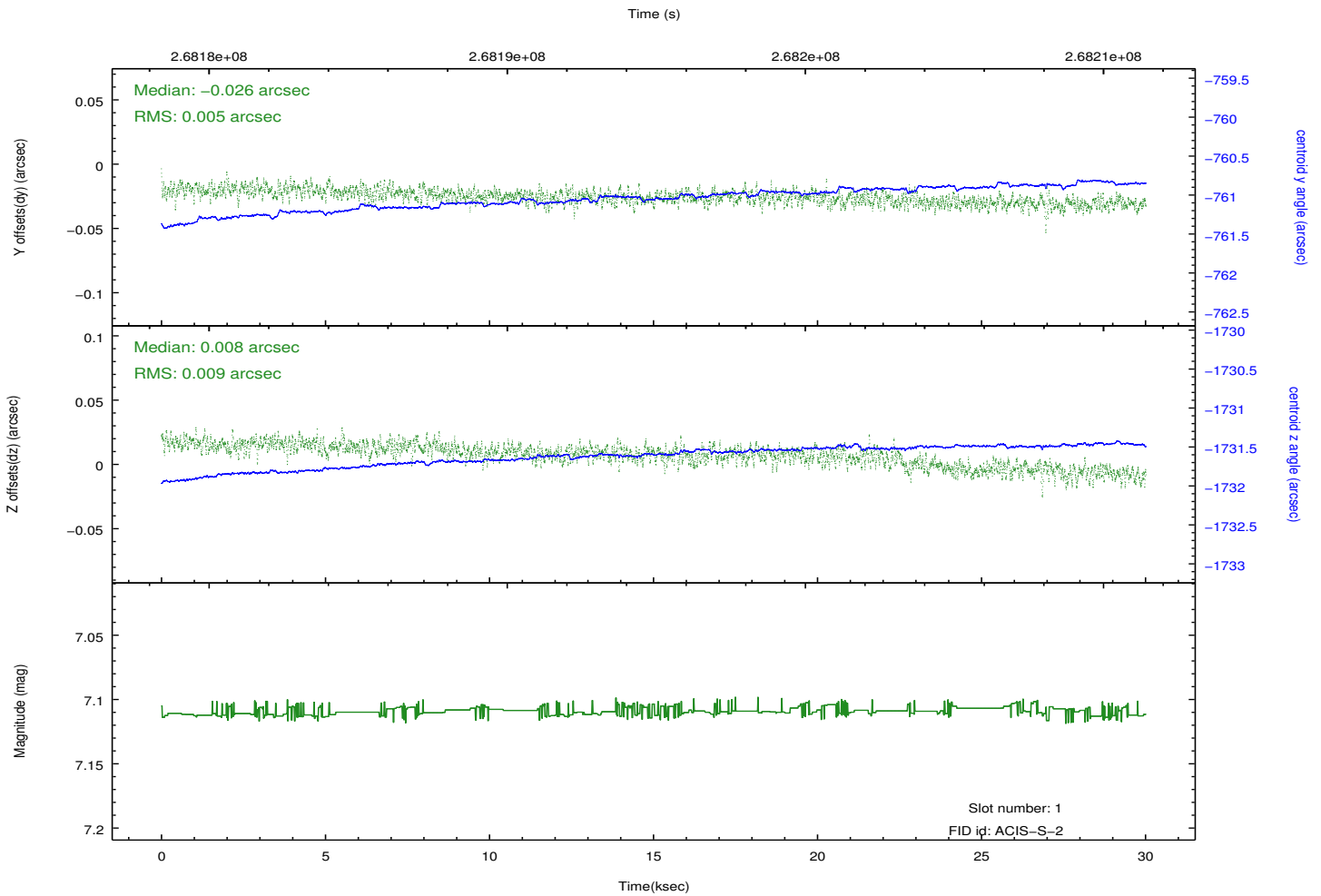
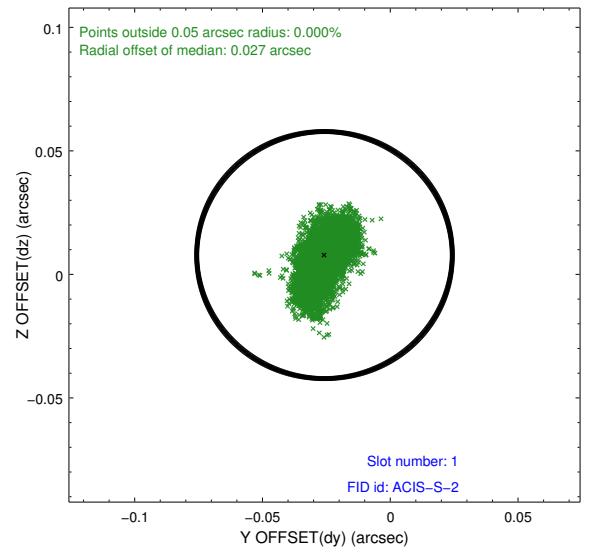
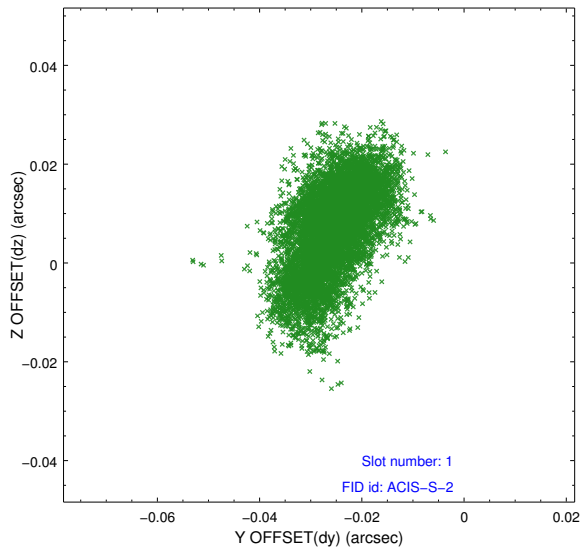


2.5 FID Slots

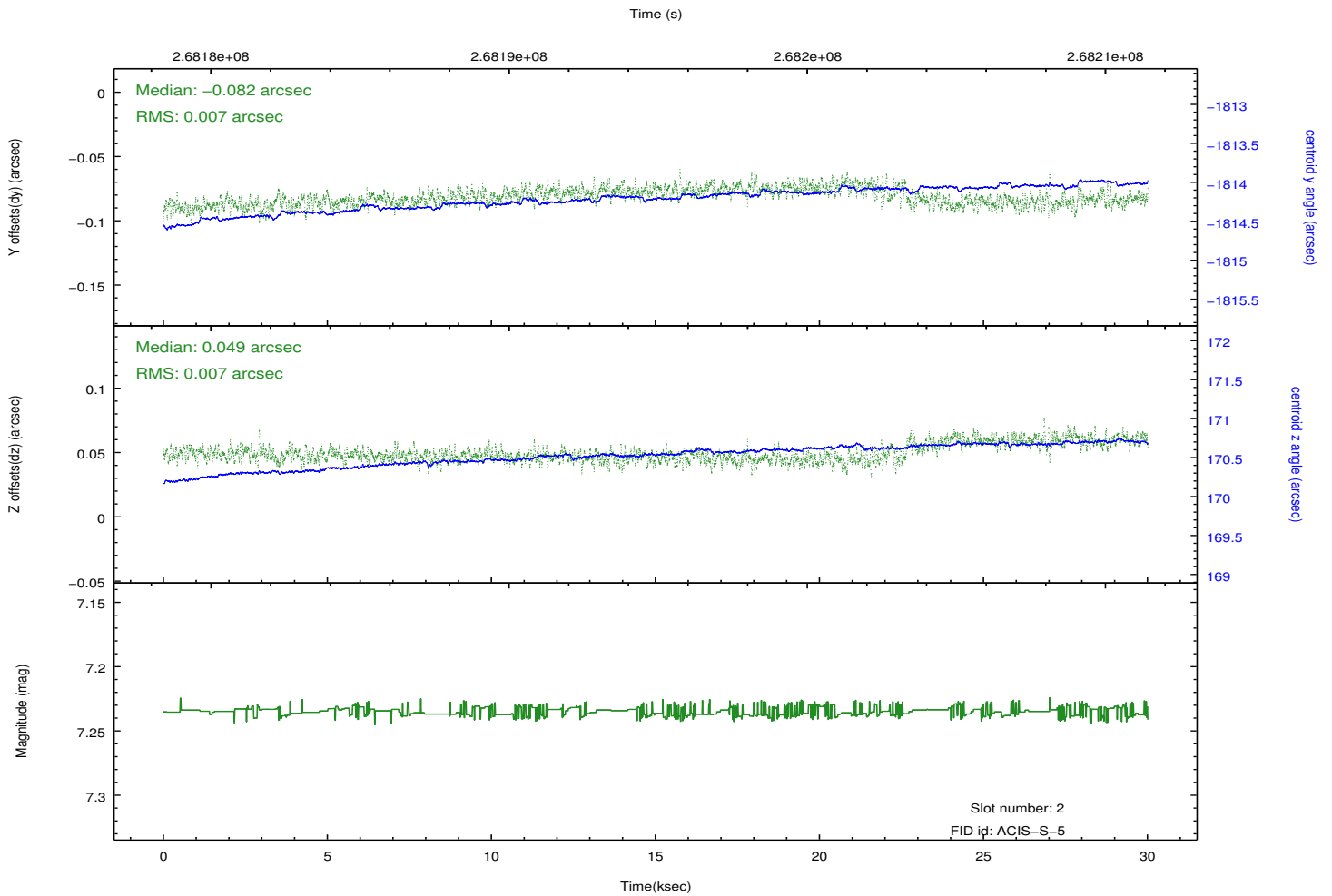
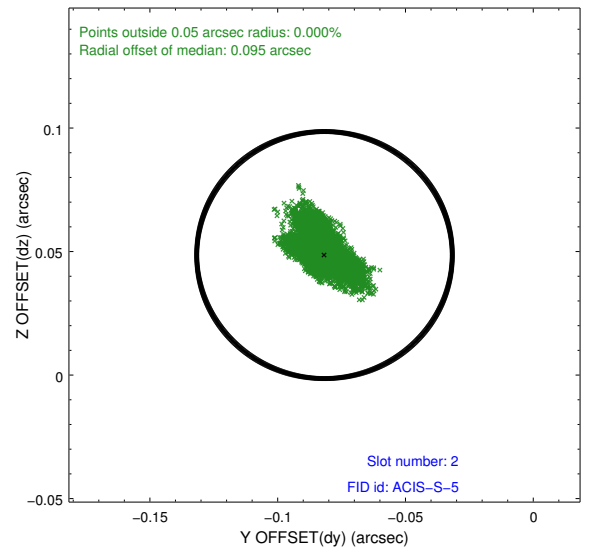
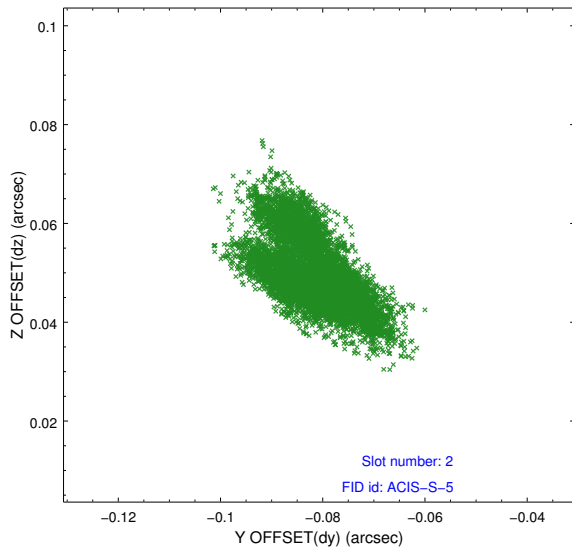
2.5.1 Slot 0



2.5.2 Slot 1



2.5.3 Slot 2



A Summary

A.1 Status

V&V Scientist	Jen Lauer
V&V Date (YYYY-MM-DD)	2012.04.05
V&V Edition	1
V&V Disposition and Status	OK
V&V Charge Time	30.0110999

A.2 Comments