

V&V Reference Report

L2 ASCDS Version : 8.4.3.1

Observation 6726 - L2 Version 2
Chandra X-Ray Center

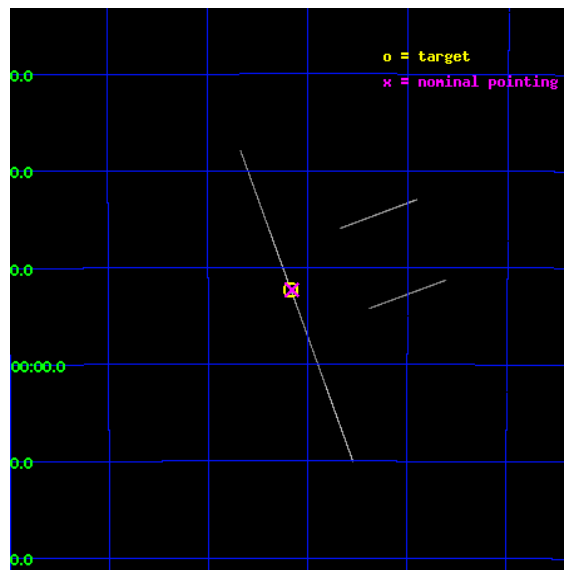
L2 Processing Date : Apr 11 2012

Contents

1	Front	2
2	OBI	3
2.1	OBI	3
2.1.1	Images	3
2.1.2	Bias	3
2.1.3	Parameters	4
2.1.4	Events	4
2.2	Compared Parameters	5
2.3	Aspect	6
2.4	Star Slots	9
2.4.1	Slot 3	9
2.4.2	Slot 4	10
2.4.3	Slot 5	11
2.4.4	Slot 6	12
2.4.5	Slot 7	13
2.5	FID Slots	14
2.5.1	Slot 0	14
2.5.2	Slot 1	15
2.5.3	Slot 2	16
A	Summary	17
A.1	Status	17
A.2	Comments	17

1 Front

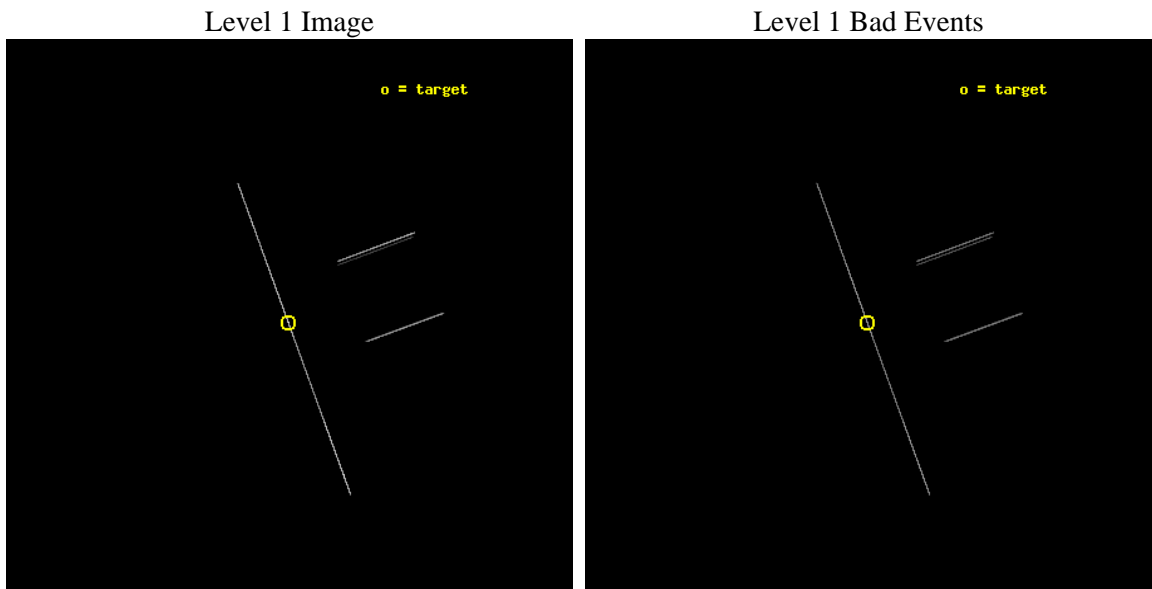
seq_num	500673	Sequence number
obs_id	6726	Observation id
title	TINY HICCUPS TO TITANIC EXPLOSIONS: Tackling Transients in Anomalous X-ray Pulsars	Proposal title
observer	Professor Victoria Kaspi	Principal investigator
object	CXO J164710.2-455216	Source name
ra_targ	251.7925	Observer's specified target RA [deg]
dec_targ	-45.871361	Observer's specified target Dec [deg]
ra_nom	251.78964735352	Nominal RA [deg]
dec_nom	-45.871946554964	Nominal Dec [deg]
roll_nom	249.83514824624	Nominal Roll [deg]
revision	2	Processing version of data
ontime	25179.5	Sum of GTIs [s]
livetime	25081.142578125	Livetime [s]
ontime2	25179.5	Sum of GTIs [s]
ontime3	25179.5	Sum of GTIs [s]
ontime5	25179.5	Sum of GTIs [s]
ontime6	25179.5	Sum of GTIs [s]
ontime7	25179.5	Sum of GTIs [s]
ontime8	25179.5	Sum of GTIs [s]
l2events	509918	Number of level 2 events



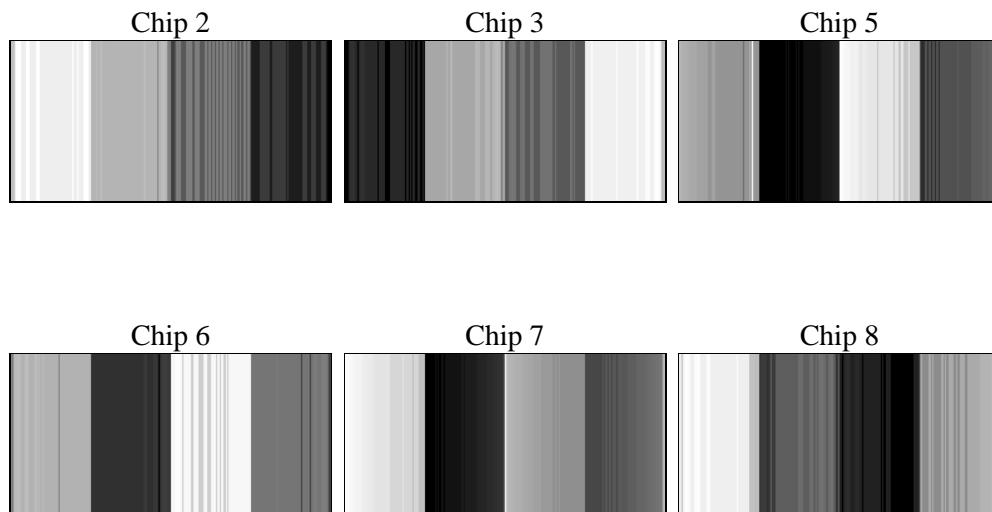
2 OBI

2.1 OBI

2.1.1 Images



2.1.2 Bias



2.1.3 Parameters

obi_num	0	Obi number	sched_exp_time	25000.000000	[s] Scheduled observation exposure time
ascdsver	8.4.3.1	Processing system revision	ontime	25179.5	Sum of GTIs [s]
caldbver	4.4.9	 	ontime2	25179.5	Sum of GTIs [s]
date	2012-04-11T01:37:03	Date and time of file creation	ontime3	25179.5	Sum of GTIs [s]
revision	2	Processing version of data	ontime5	25179.5	Sum of GTIs [s]
			ontime6	25179.5	Sum of GTIs [s]
			ontime7	25179.5	Sum of GTIs [s]
			ontime8	25179.5	Sum of GTIs [s]
			l1events	763187	Number of level 1 events

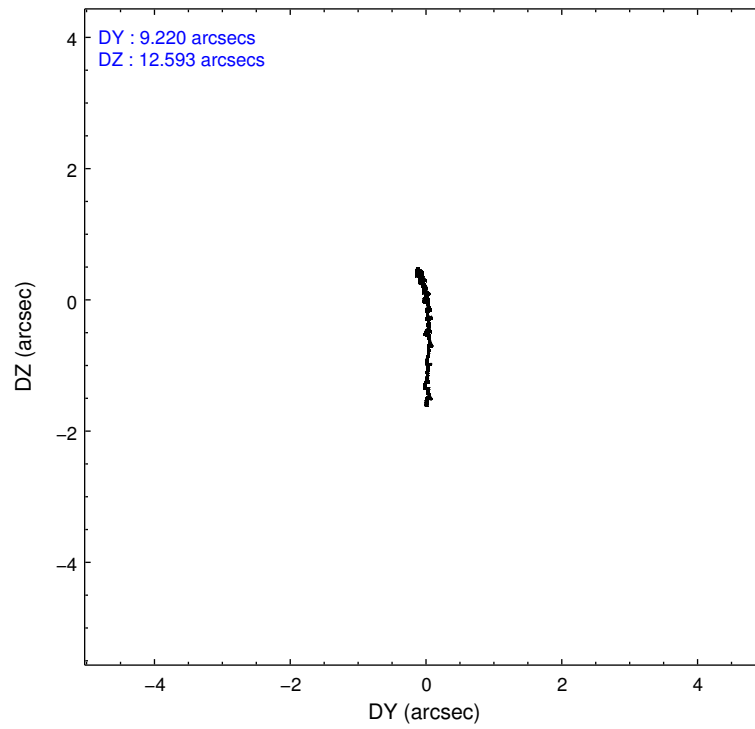
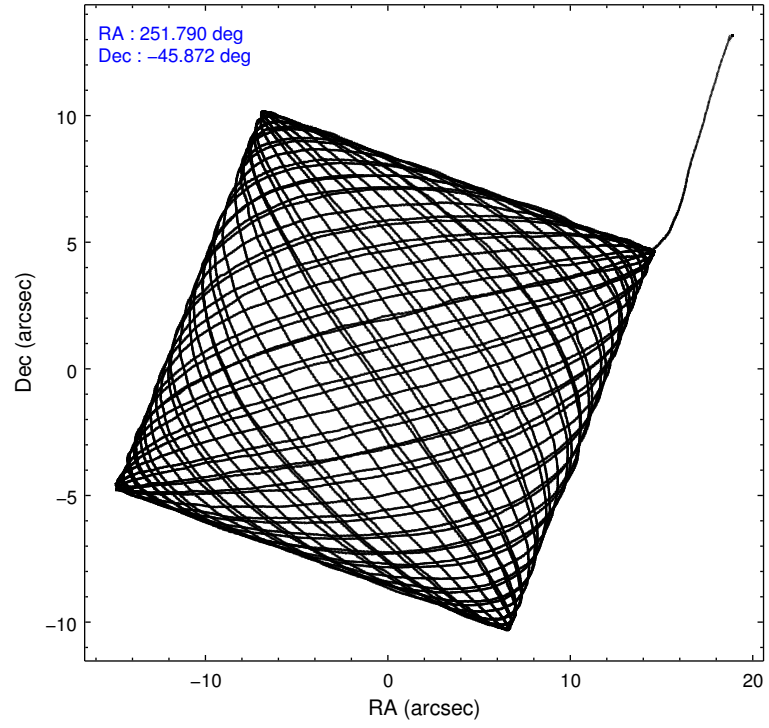
2.1.4 Events

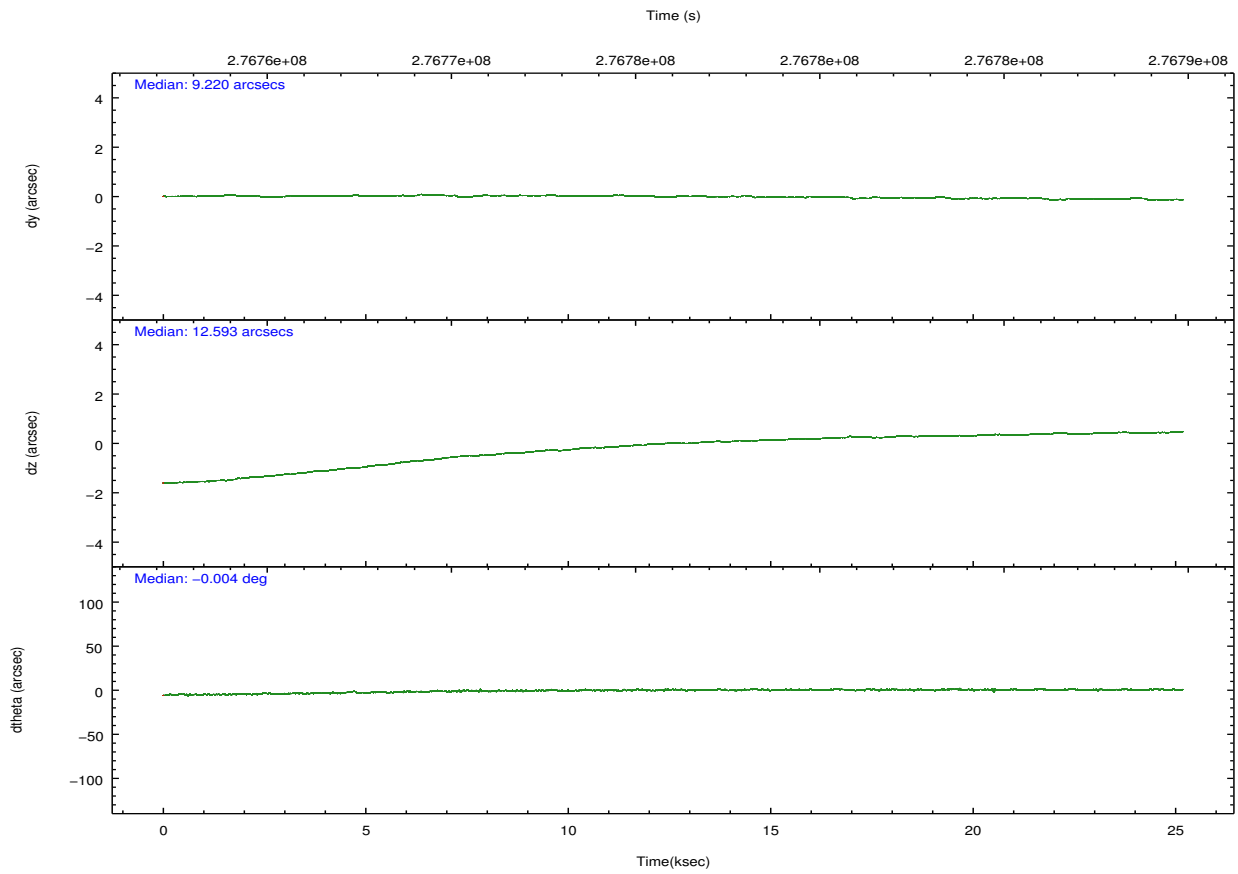
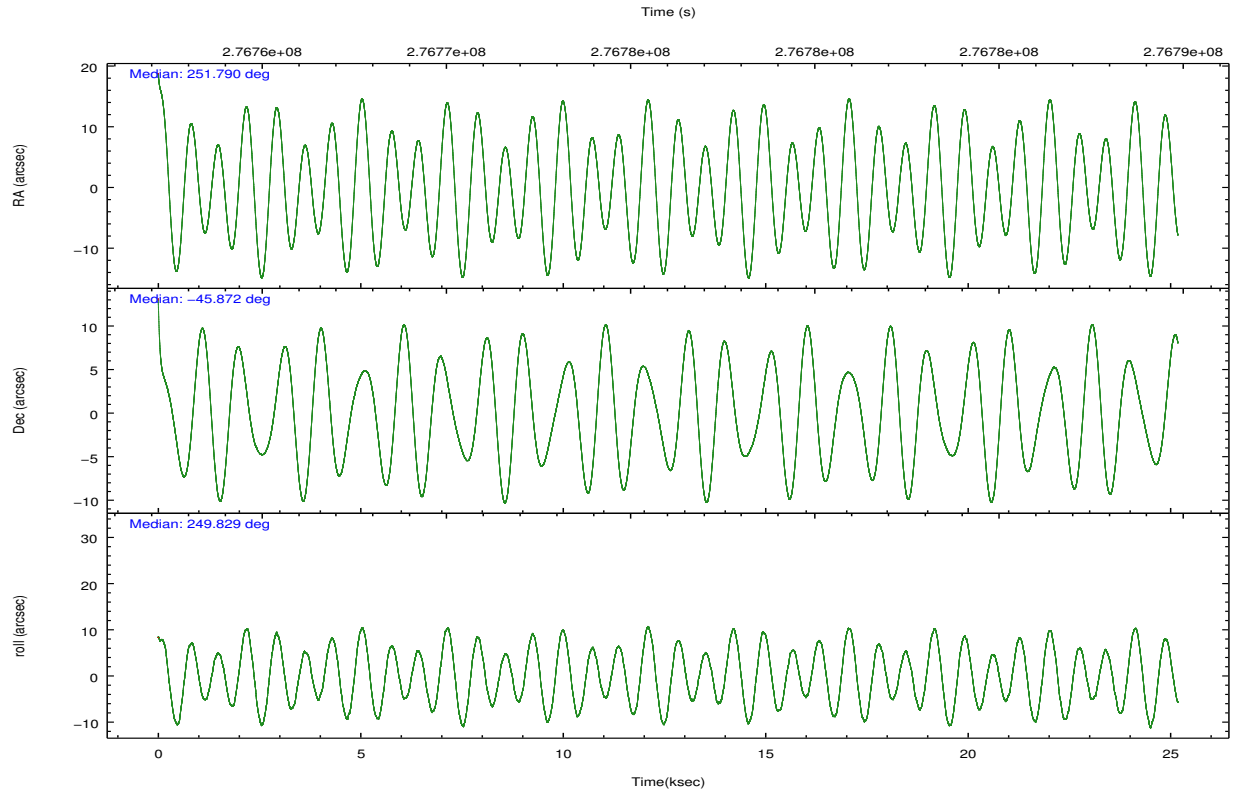
	ccd 2	ccd 3	ccd 5	ccd 6	ccd 7	ccd 8		ccd 2	ccd 3	ccd 5	ccd 6	ccd 7	ccd 8
level 1 events	56490	82577	246145	57076	207181	113718	grade 0 events	6860	13830	53767	5695	20974	19390
rejected events	10576	12303	30827	12597	32563	18622		12%	16%	21%	9%	10%	17%
rejected %	18%	14%	12%	22%	15%	16%	grade 1 events	211	247	387	220	462	398
								0%	0%	0%	0%	0%	0%
							grade 2 events	20920	34038	63932	19282	47660	33151
								37%	41%	25%	33%	23%	29%
							grade 3 events	5292	6650	4557	5409	14083	10898
								9%	8%	1%	9%	6%	9%
							grade 4 events	5436	5818	4271	5161	13689	10472
								9%	7%	1%	9%	6%	9%
							grade 5 events	8811	10273	21795	10644	26764	14449
								15%	12%	8%	18%	12%	12%
							grade 6 events	8960	11721	97436	10665	83549	24960
								15%	14%	39%	18%	40%	21%
							grade 7 events	0	0	0	0	0	0
								0%	0%	0%	0%	0%	0%

2.2 Compared Parameters

Parameter	Planned	Actual	Parameter	Planned	Actual
Instrument	ACIS	ACIS	Obspar format version number	7	7
Detector	ACIS-235678	ACIS-235678	Obspar file type	PREDICTED	ACTUAL
Grating	NONE	NONE	Obspar update status	NONE	UPDATED
Data mode	CC33_FAINT	CC33_FAINT	Number of optional ACIS chips dropped	0	0
Observation mode	POINTING	POINTING	On-chip summing requested	N	N
[deg] Pointing RA	251.782442	251.789647353517	Subarray requested	NONE	NONE
[deg] Pointing Dec	-45.845187	-45.87194655496434	Alternating exposures requested	N	N
[deg] Pointing Roll	249.673353	249.8351482462412	[s] Primary exposure time	0.000000	0
[mm] SIM focus pos	-0.684267	-0.6828225247311905			
[mm] SIM defocus	0	0.001444936568705701			
[mm] SIM translation stage pos	-190.132523	-190.1425803651734			
[mm] SIM translation stage offset	0	0.01005778216563158			
[s] Observation start time (MET)	276763605.184000	276762403.88832			
Observation start date	2006-10-09T06:45:40	2006-10-09T06:26:43			
[s] Observation end time (MET)	276788605.184000	276789936.41462			
Observation end date	2006-10-09T13:42:20	2006-10-09T14:05:36			
Read mode	CONTINUOUS	CONTINUOUS			

2.3 Aspect





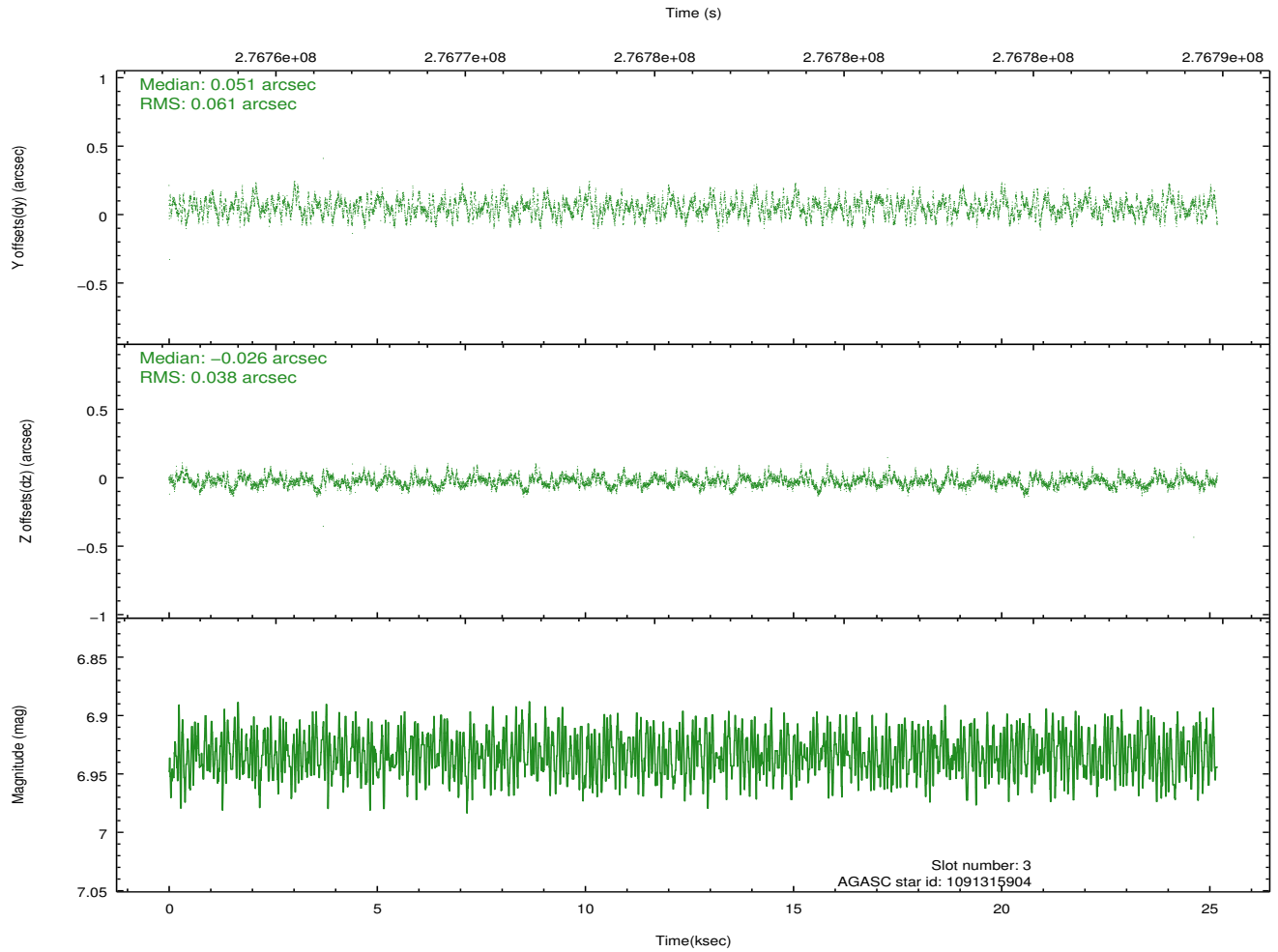
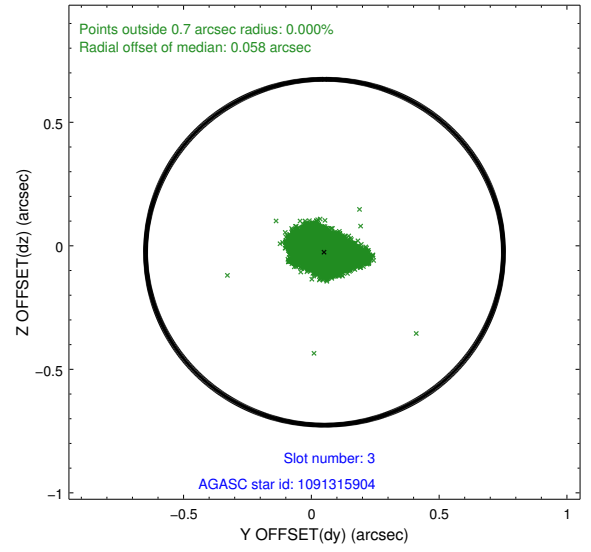
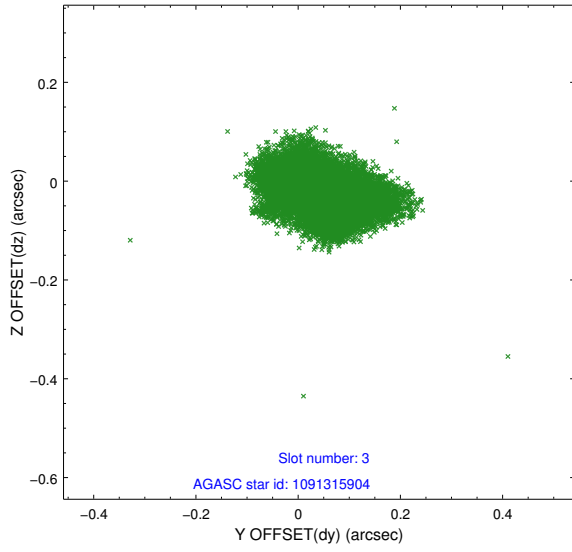
Slot Statistics

slot	status	id	mag	n_pts	med_dy	med_dz	dr1	dr2	ra	dec	mean_y	mean_z
0	FID	ACIS-S-2	7.11	6143	-0.021	-0.052	0.016	0.037	0.000000	0.000000	-762.05	-1733.65
1	FID	ACIS-S-4	7.20	6142	0.157	0.025	0.010	0.021	0.000000	0.000000	2151.37	174.77
2	FID	ACIS-S-5	7.24	6143	-0.164	0.038	0.015	0.034	0.000000	0.000000	-1814.87	168.60
3	GUIDE	1091315904	6.93	12286	0.051	-0.026	0.077	0.125	252.023077	-45.944918	128.62	689.97
4	GUIDE	1091318704	7.61	12284	-0.198	0.133	0.068	0.110	251.955714	-45.390313	-1687.11	-157.78
5	GUIDE	1091321136	8.53	12279	-0.122	0.003	0.067	0.106	252.629031	-45.865288	-658.94	2019.06
6	GUIDE	1091341680	8.44	12277	0.313	-0.014	0.071	0.116	251.240217	-46.114317	1383.62	-930.38
7	GUIDE	1091321752	6.99	12285	-0.043	-0.097	0.050	0.079	251.516776	-46.486101	2393.81	184.52

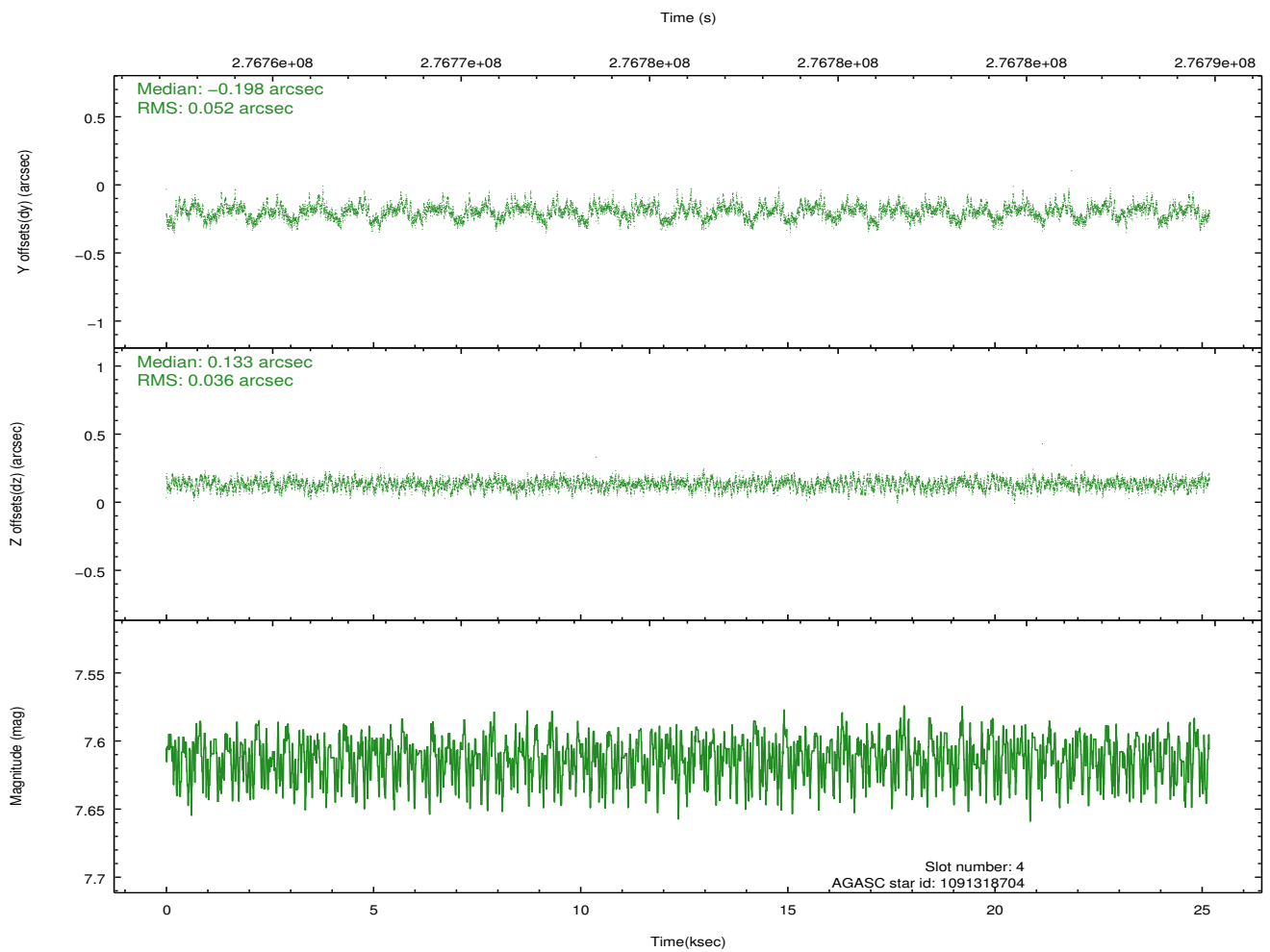
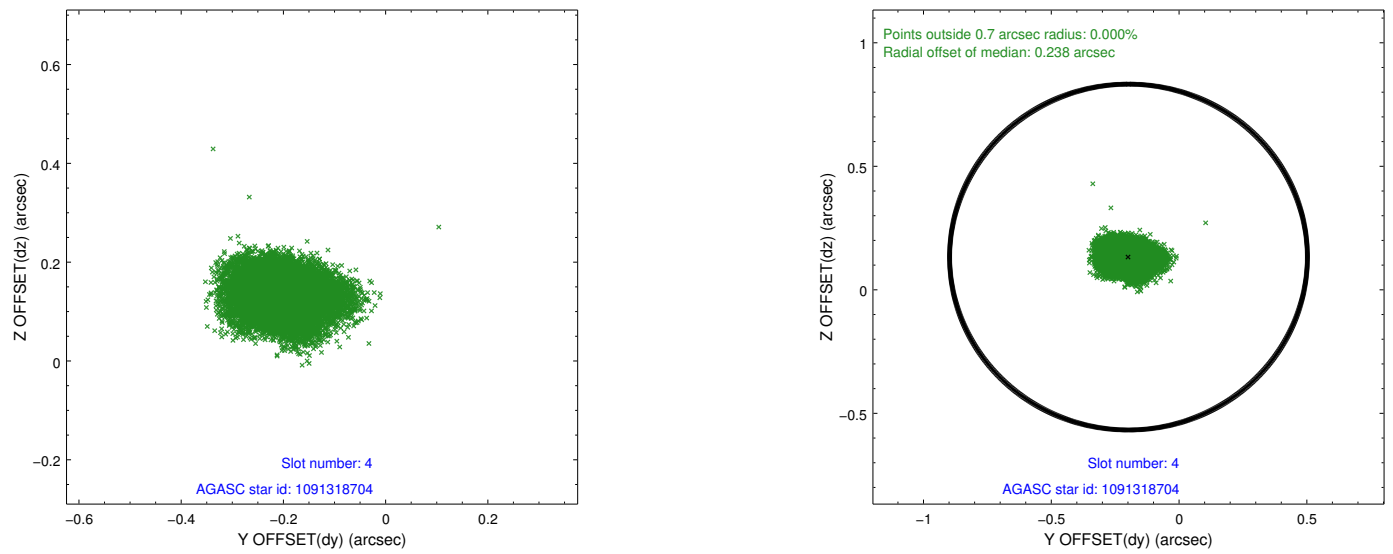
∞

2.4 Star Slots

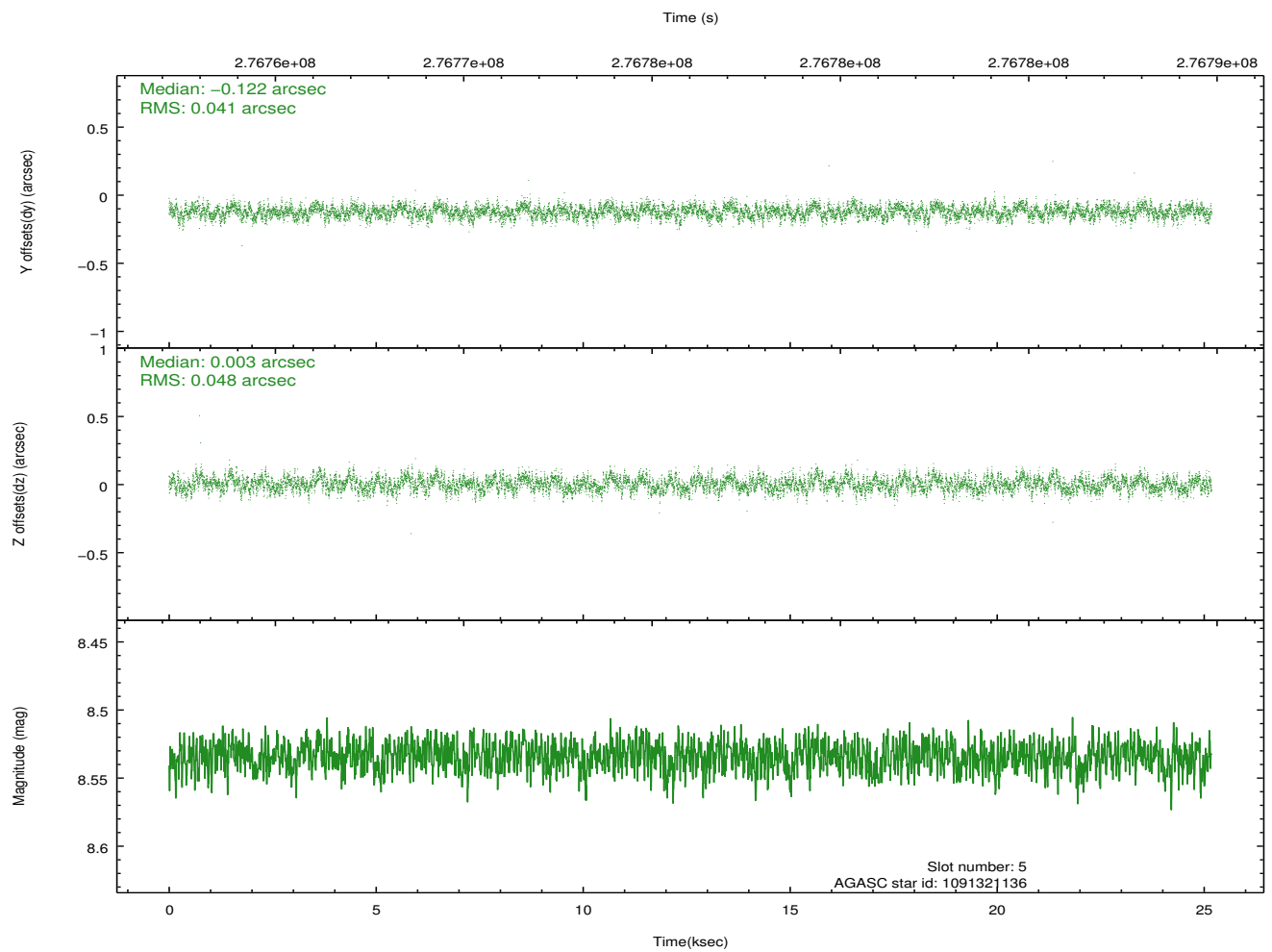
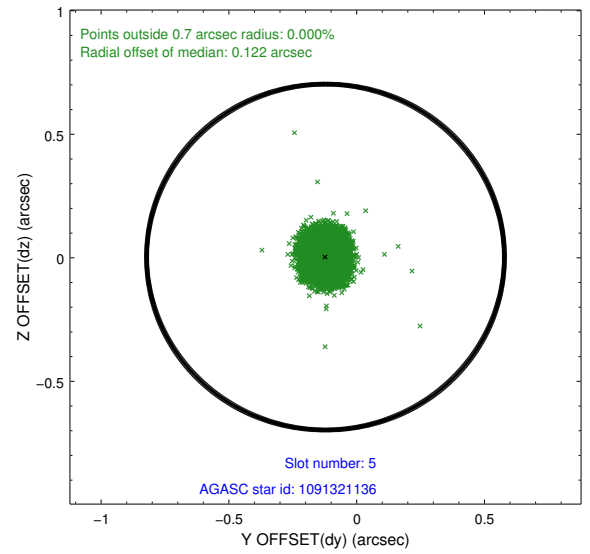
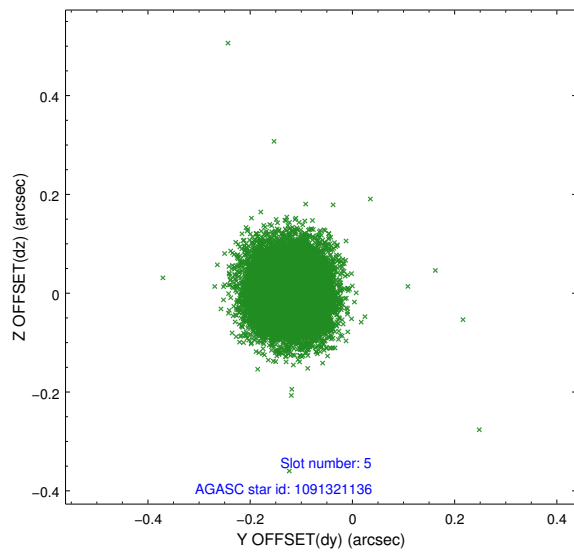
2.4.1 Slot 3



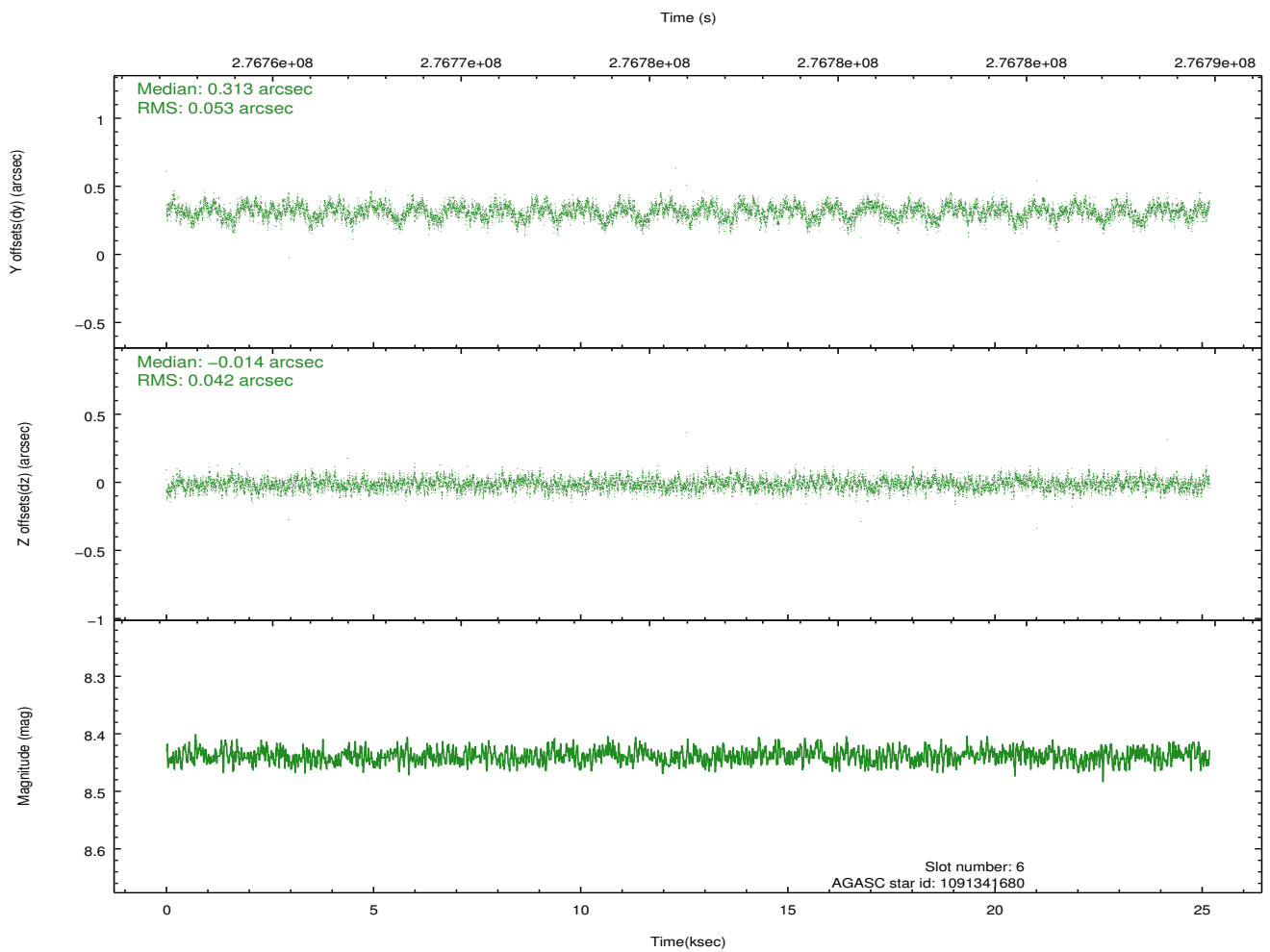
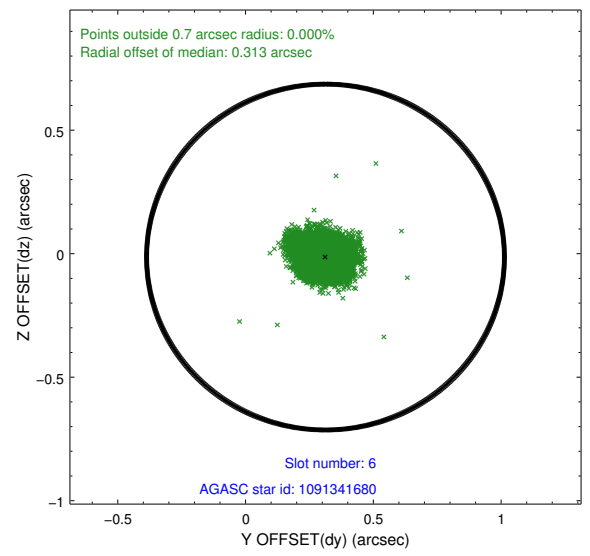
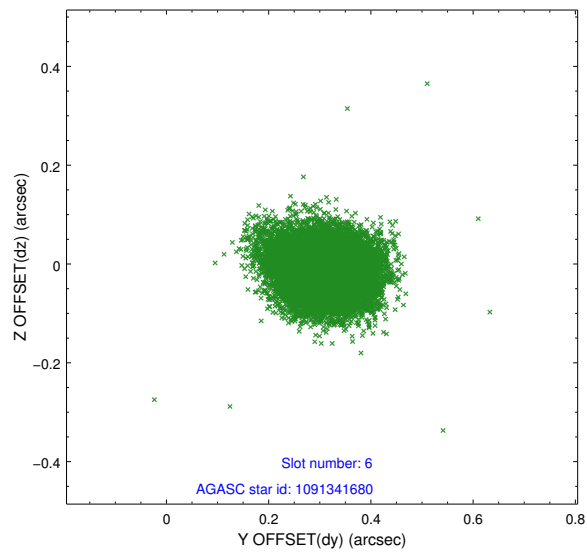
2.4.2 Slot 4



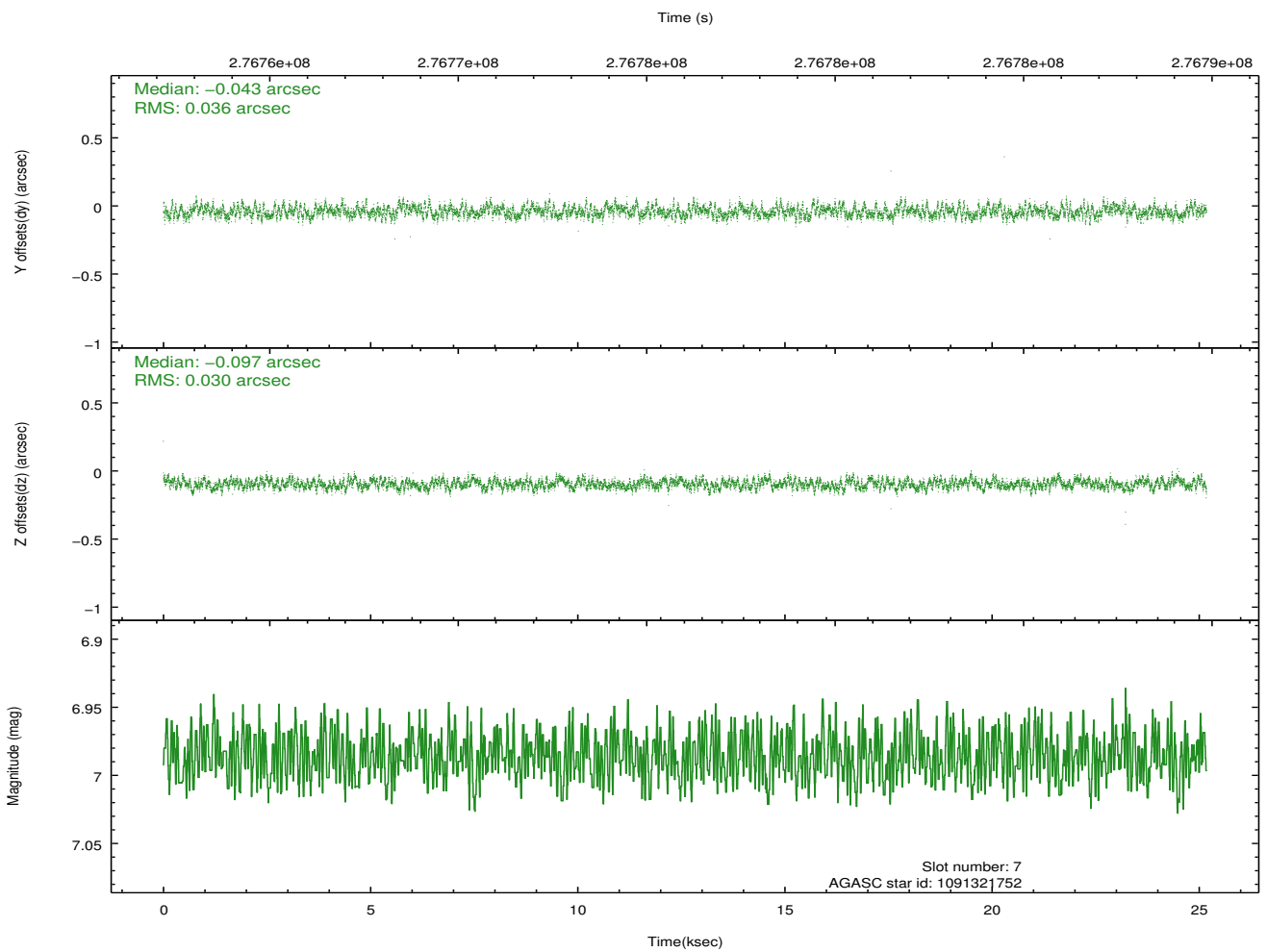
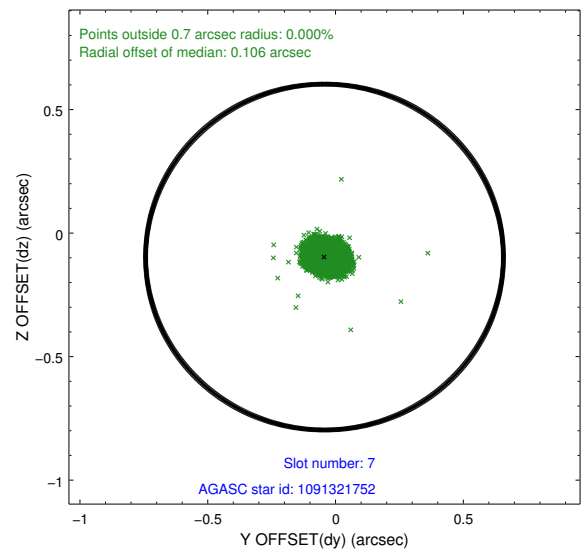
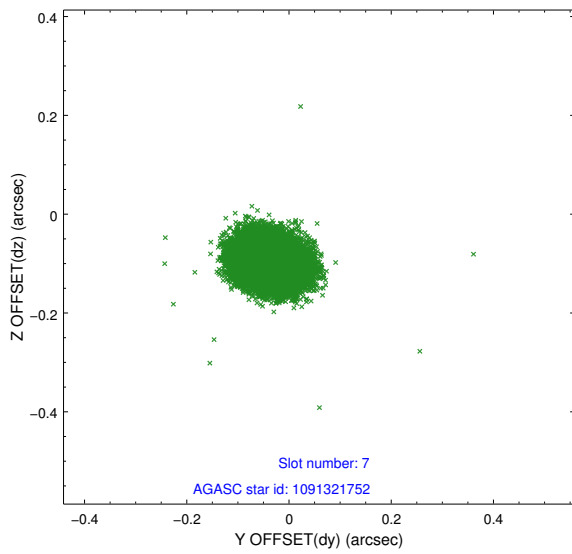
2.4.3 Slot 5



2.4.4 Slot 6

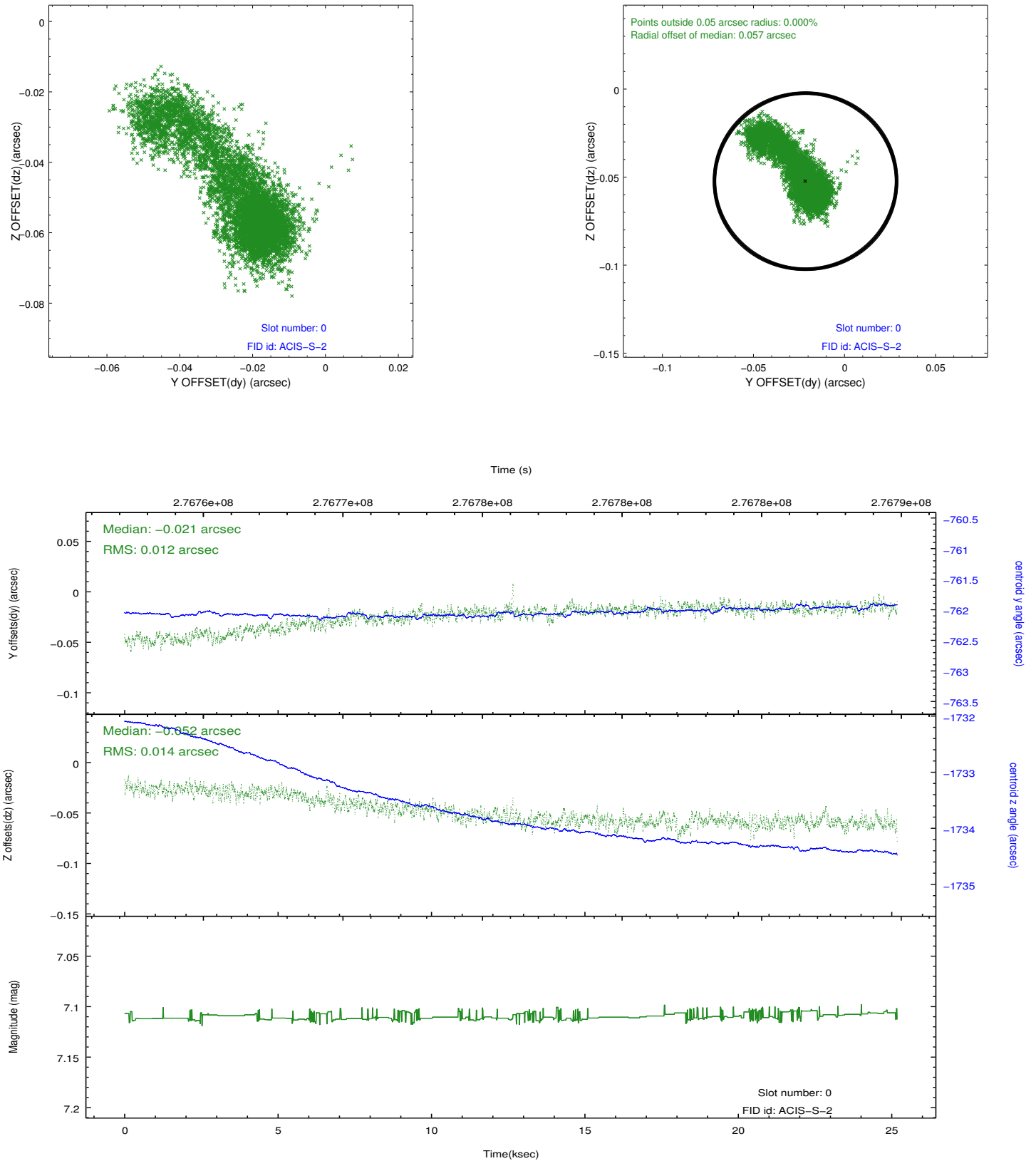


2.4.5 Slot 7

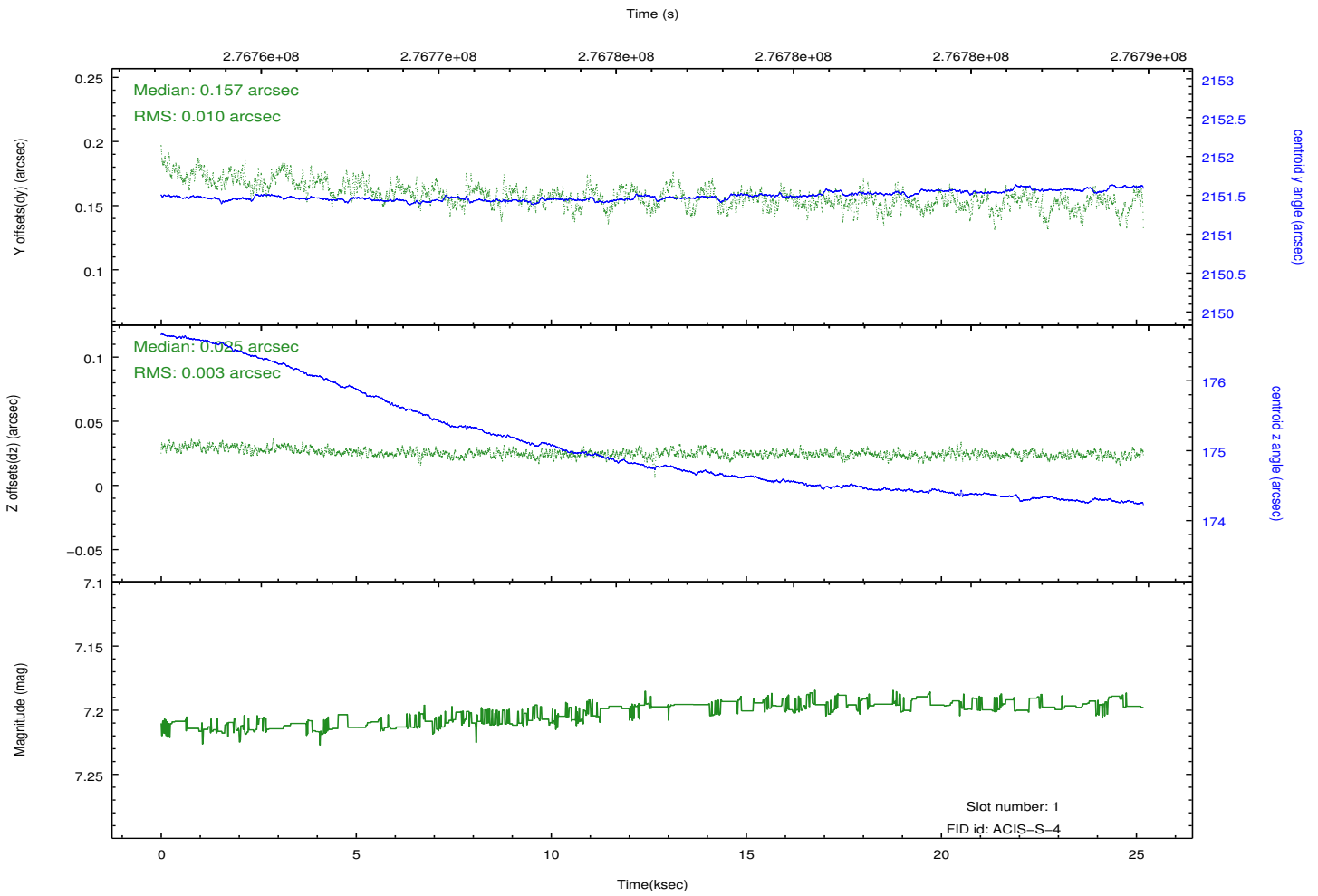
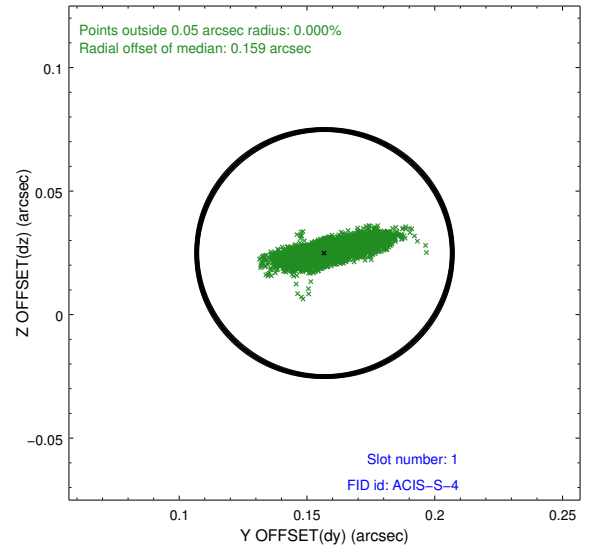
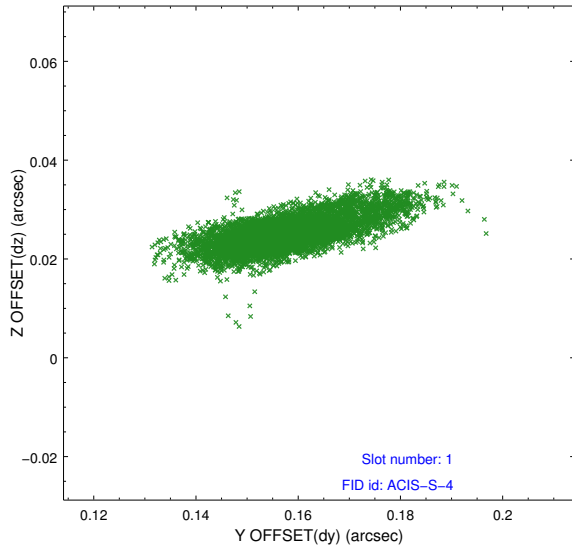


2.5 FID Slots

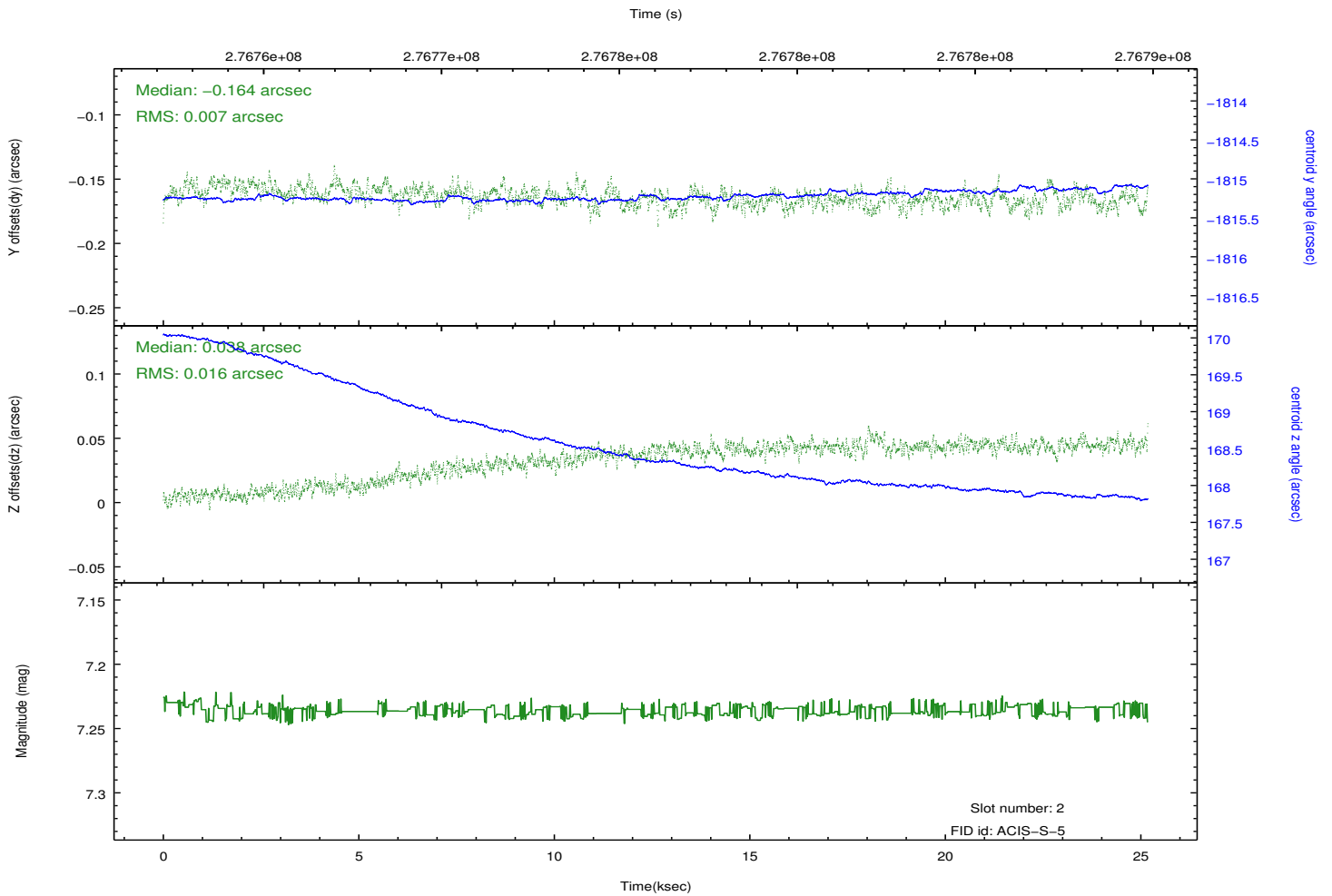
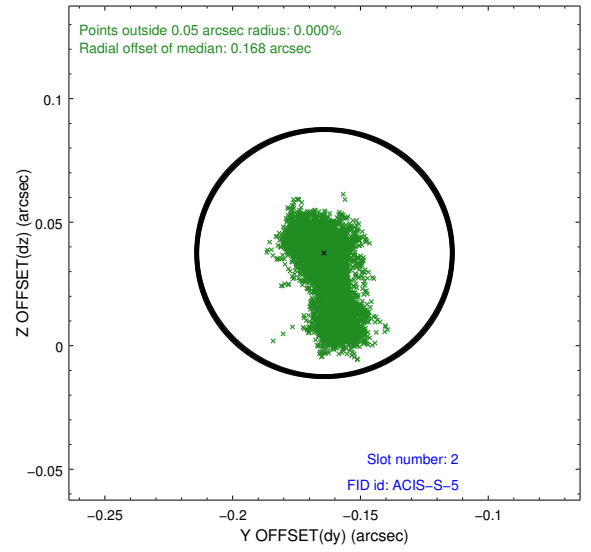
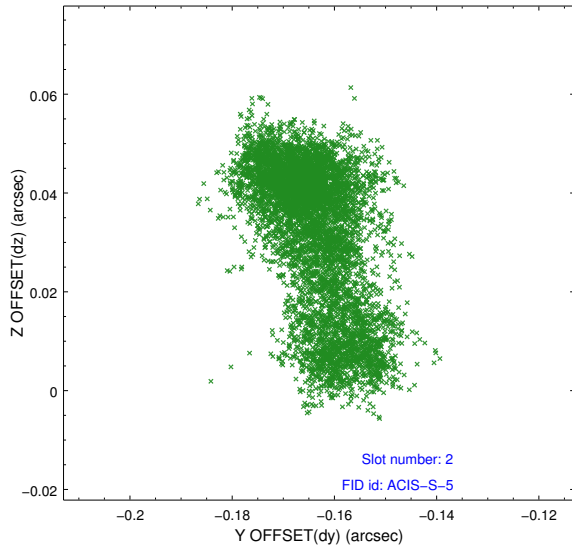
2.5.1 Slot 0



2.5.2 Slot 1



2.5.3 Slot 2



A Summary

A.1 Status

V&V Scientist	Joy Nichols
V&V Date (YYYY-MM-DD)	2012.04.11
V&V Edition	1
V&V Disposition and Status	OK
V&V Charge Time	25.1795

A.2 Comments