

V&V Reference Report

L2 ASCDS Version : 8.4.3

Observation 7236 - L2 Version 2
Chandra X-Ray Center

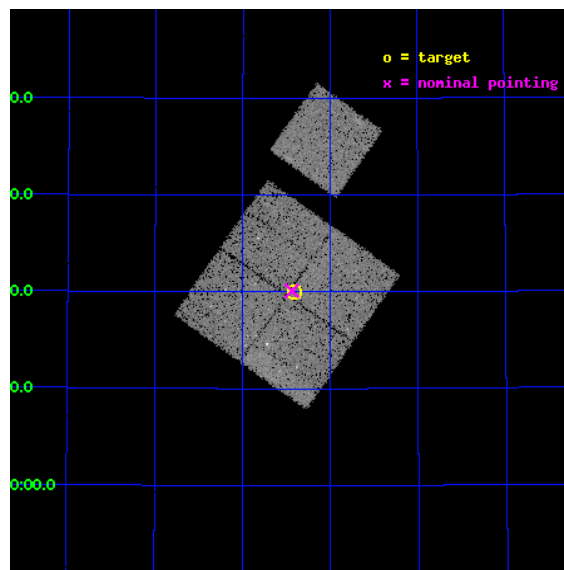
L2 Processing Date : Mar 18 2012

Contents

1	Front	2
2	OBI	3
2.1	OBI	3
2.1.1	Images	3
2.1.2	Bias	3
2.1.3	Parameters	4
2.1.4	Events	4
2.2	Compared Parameters	5
2.3	Aspect	6
2.4	Star Slots	9
2.4.1	Slot 3	9
2.4.2	Slot 4	10
2.4.3	Slot 5	11
2.4.4	Slot 6	12
2.4.5	Slot 7	13
2.5	FID Slots	14
2.5.1	Slot 0	14
2.5.2	Slot 1	15
2.5.3	Slot 2	16
A	Summary	17
A.1	Status	17
A.2	Comments	17

1 Front

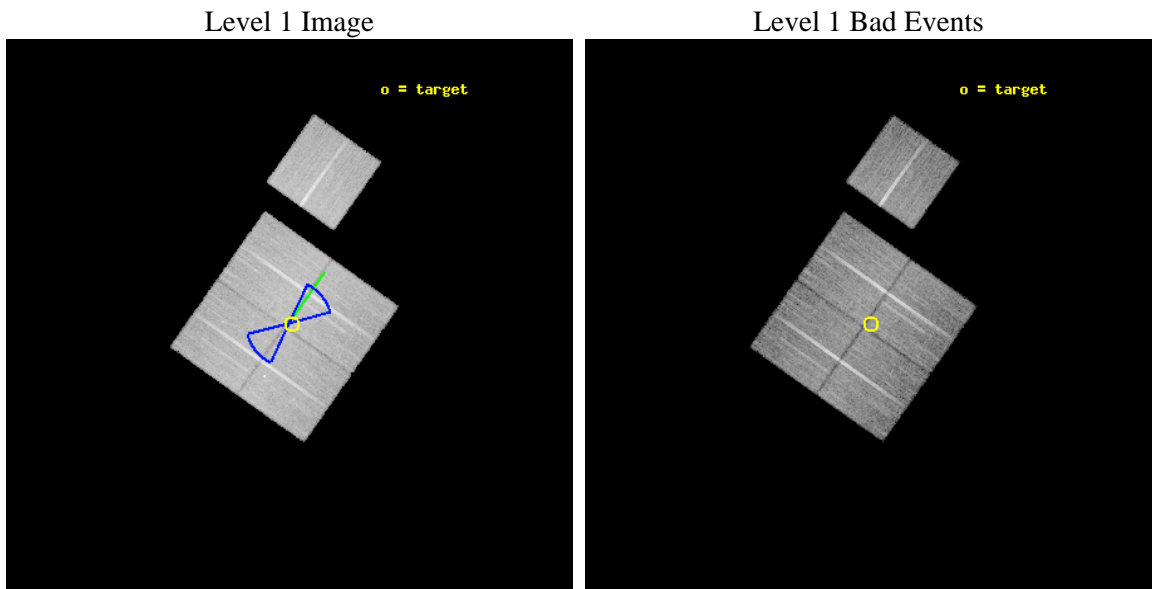
seq_num	900353	Sequence number
obs_id	7236	Observation id
title	Deep Chandra Imaging of the Extended Groth Strip: The Co-evolution of Black Holes and Galaxies	Proposal title
observer	Prof Kirpal Nandra	Principal investigator
object	EGS-6	Source name
dtcycle	0	
cycle	P	events from which exps? Prim/Second/Both
ra_targ	214.102081	Observer's specified target RA [deg]
dec_targ	52.334053	Observer's specified target Dec [deg]
ra_nom	214.10956209915	Nominal RA [deg]
dec_nom	52.335061006117	Nominal Dec [deg]
roll_nom	35.202784989128	Nominal Roll [deg]
revision	2	Processing version of data
ontime	20636.699960291	Sum of GTIs [s]
livetime	20367.066282793	Livetime [s]
ontime0	20636.699960291	Sum of GTIs [s]
ontime1	20633.558980048	Sum of GTIs [s]
ontime2	20630.418019742	Sum of GTIs [s]
ontime3	20636.699960291	Sum of GTIs [s]
ontime6	20633.558990061	Sum of GTIs [s]
l2events	63247	Number of level 2 events



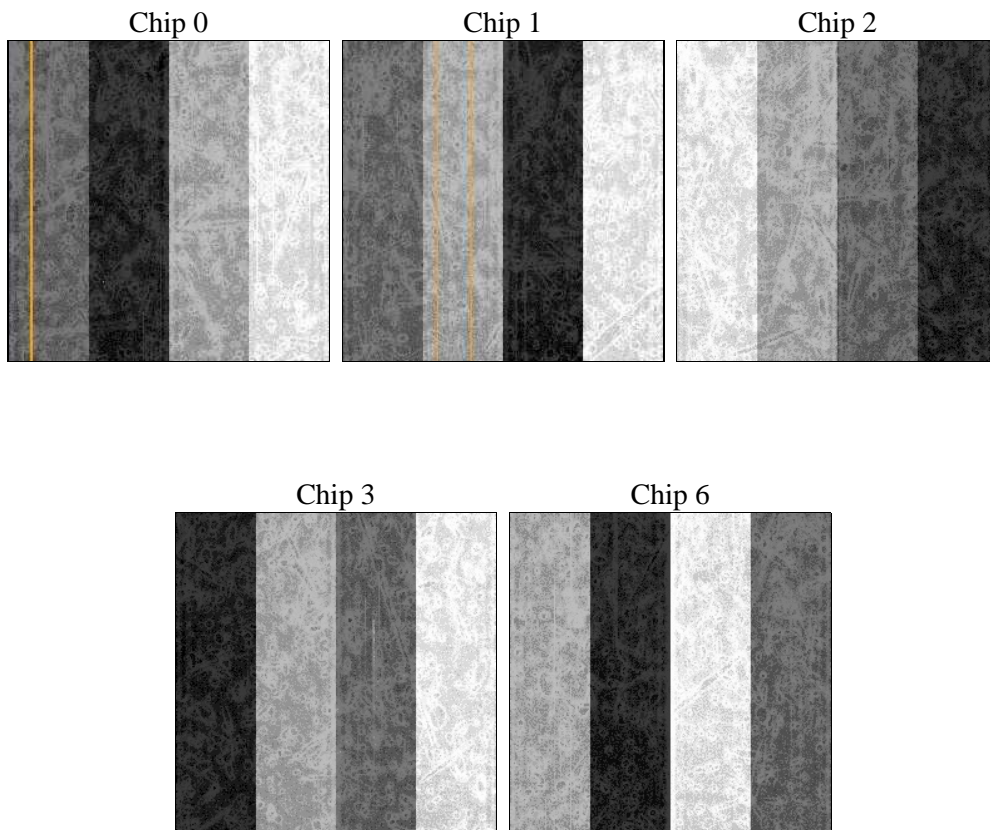
2 OBI

2.1 OBI

2.1.1 Images



2.1.2 Bias



2.1.3 Parameters

obi_num	0	Obi number	sched_exp_time	20500.000000	[s] Scheduled observation exposure time
ascdsver	8.4.3.1	Processing system revision	ontime	20636.699960291	Sum of GTIs [s]
caldbver	4.4.8	 	ontime0	20636.699960291	Sum of GTIs [s]
date	2012-03-18T08:56:35	Date and time of file creation	ontime1	20633.558980048	Sum of GTIs [s]
revision	2	Processing version of data	ontime2	20630.418019742	Sum of GTIs [s]
			ontime3	20636.699960291	Sum of GTIs [s]
			ontime6	20633.558990061	Sum of GTIs [s]
			l1events	690988	Number of level 1 events

2.1.4 Events

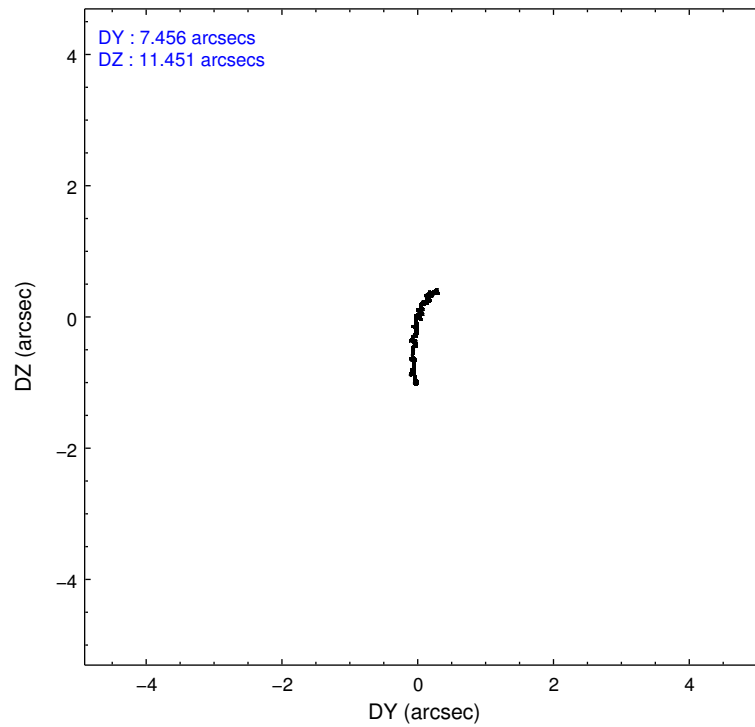
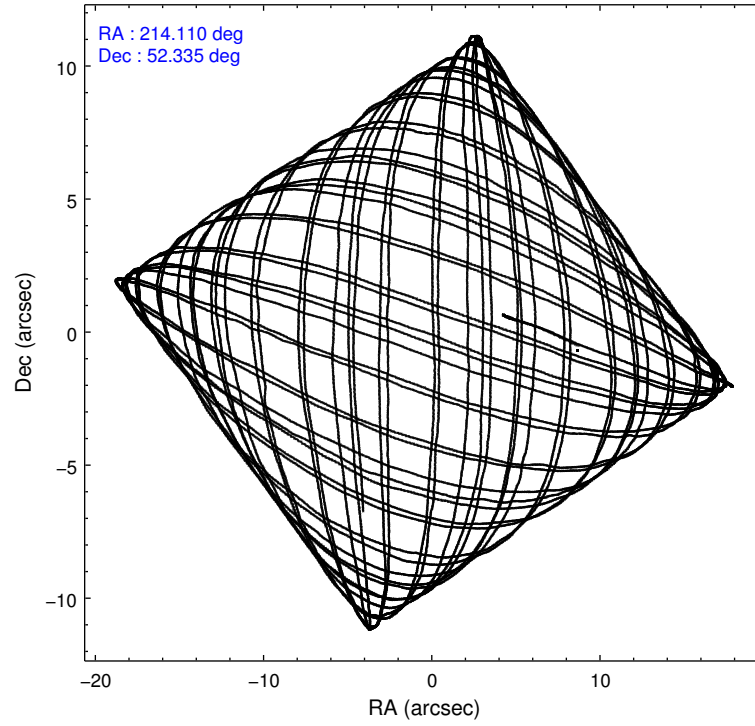
	ccd 0	ccd 1	ccd 2	ccd 3	ccd 6
level 1 events	133587	132316	149804	135543	139738
rejected events	118674	115558	135283	121455	124643
rejected %	88%	87%	90%	89%	89%

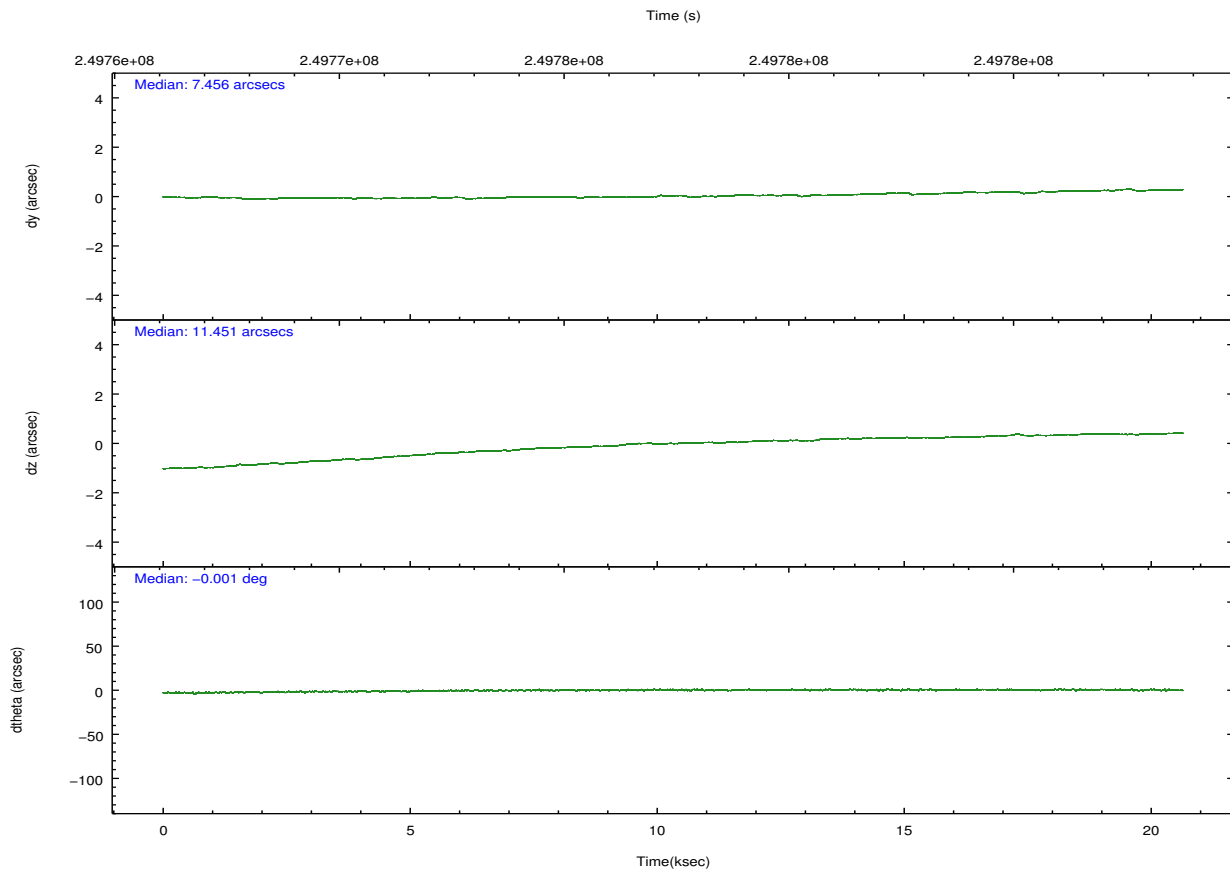
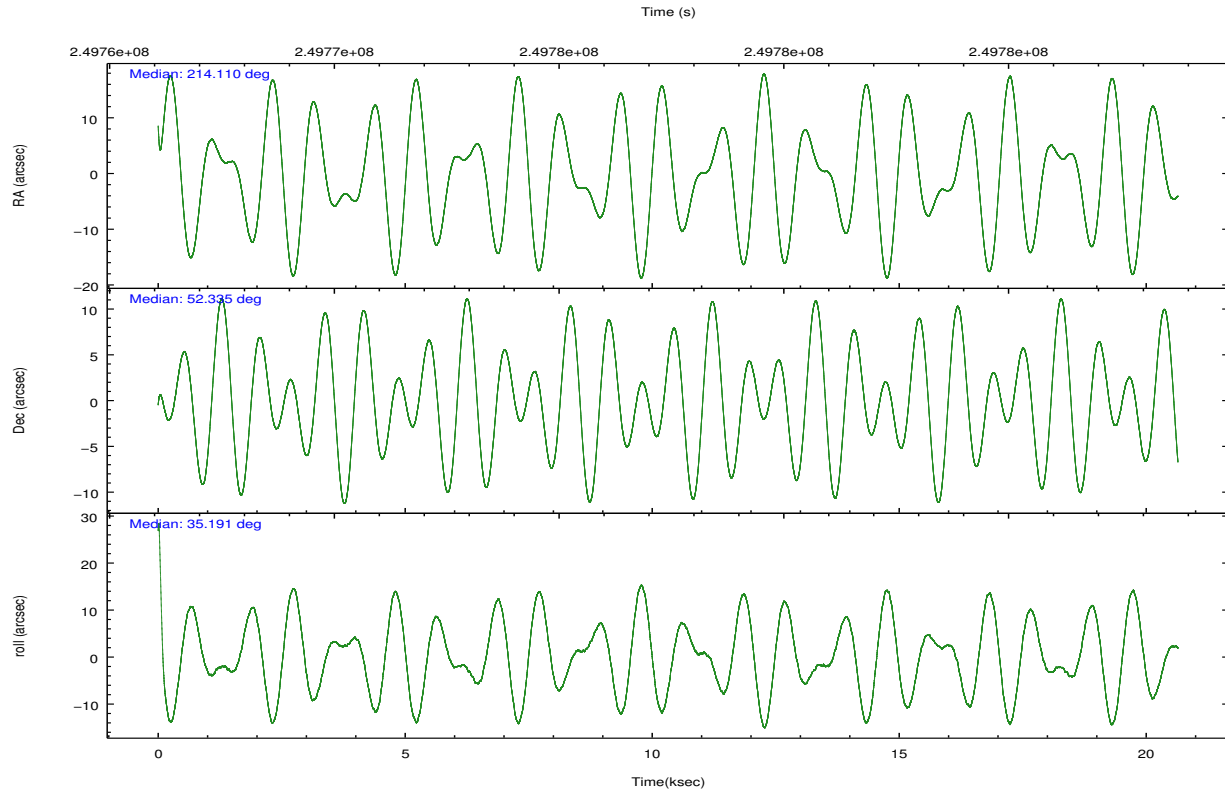
	ccd 0	ccd 1	ccd 2	ccd 3	ccd 6
grade 0 events	5729	6582	5532	5340	5691
	4%	4%	3%	3%	4%
grade 1 events	73	68	79	88	73
	0%	0%	0%	0%	0%
grade 2 events	3335	3620	3352	3012	3082
	2%	2%	2%	2%	2%
grade 3 events	1671	1768	1580	1568	1659
	1%	1%	1%	1%	1%
grade 4 events	1511	1693	1614	1568	1634
	1%	1%	1%	1%	1%
grade 5 events	4725	5430	4607	5485	5448
	3%	4%	3%	4%	3%
grade 6 events	2730	3170	2492	2665	3090
	2%	2%	1%	1%	2%
grade 7 events	113813	109985	130548	115817	119061
	85%	83%	87%	85%	85%

2.2 Compared Parameters

Parameter	Planned	Actual	Parameter	Planned	Actual
Instrument	ACIS	ACIS	Obspar format version number	7	7
Detector	ACIS-01236	ACIS-01236	Obspar file type	PREDICTED	ACTUAL
Grating	NONE	NONE	Obspar update status	NONE	UPDATED
Data mode	VFAINT	VFAINT	Number of optional ACIS chips dropped	0	0
Observation mode	POINTING	POINTING	On-chip summing requested	N	N
[deg] Pointing RA	214.090878	214.1095620991494	Subarray requested	NONE	NONE
[deg] Pointing Dec	52.310136	52.33506100611685	Alternating exposures requested	N	N
[deg] Pointing Roll	35.008870	35.2027849891282	[s] Primary exposure time	0.000000	3.1
[deg] Roll angle	50.756000	50.756000			
[deg] Roll tolerance	25.000000	25.000000			
Roll constraint allows 180D rotation	Y	Y			
[mm] SIM focus pos	-0.782348	-0.7809083437167272			
[mm] SIM defocus	0	0.001439871863259334			
[mm] SIM translation stage pos	-233.592463	-233.5874344608287			
[mm] SIM translation stage offset	0	-0.005018542100998502			
[s] Observation start time (MET)	249767246.184000	249766174.54127			
Observation start date	2005-11-30T19:46:22	2005-11-30T19:29:34			
[s] Observation end time (MET)	249787746.184000	249788629.72981			
Observation end date	2005-12-01T01:28:02	2005-12-01T01:43:49			
Read mode	TIMED	TIMED			

2.3 Aspect





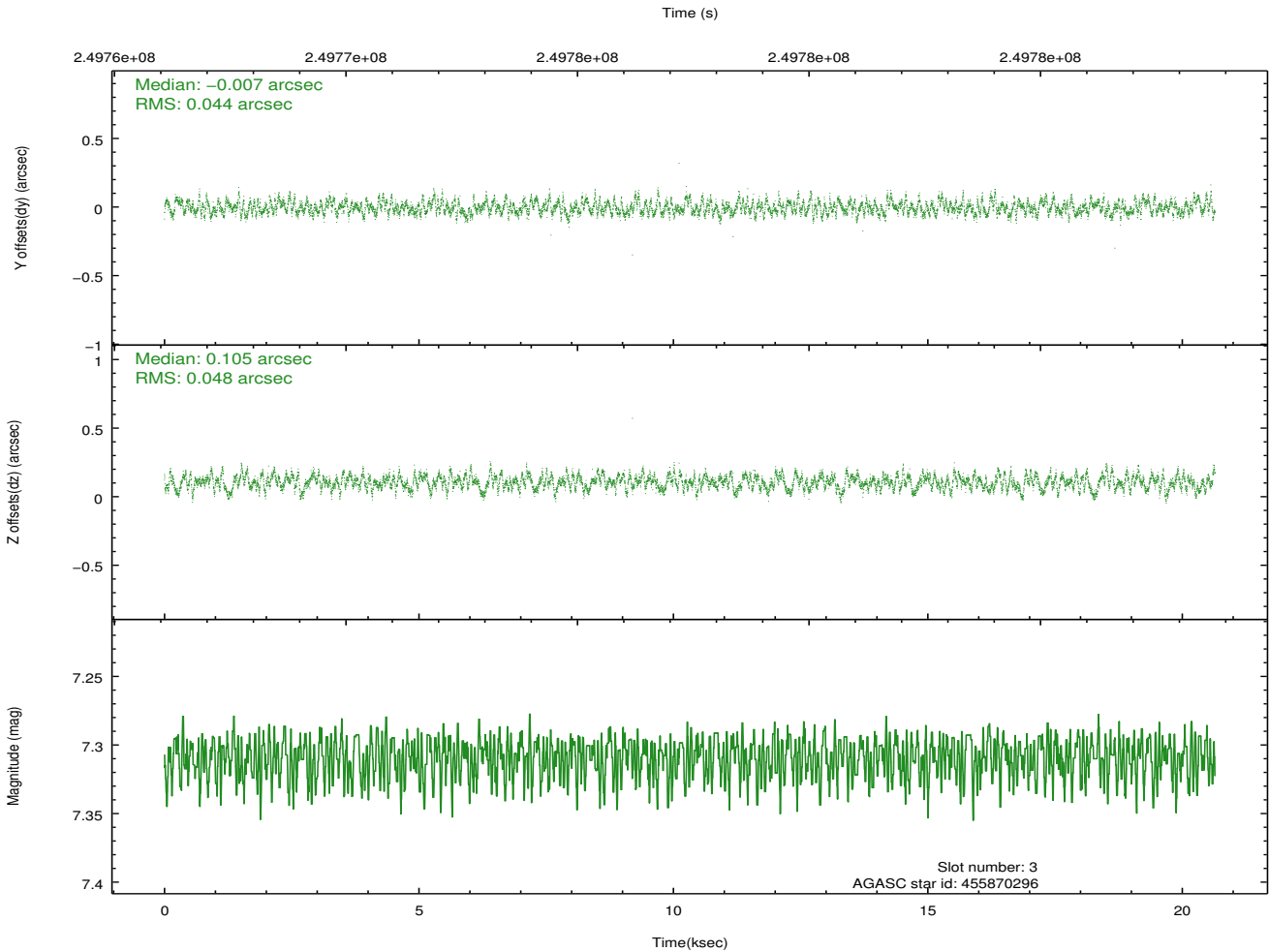
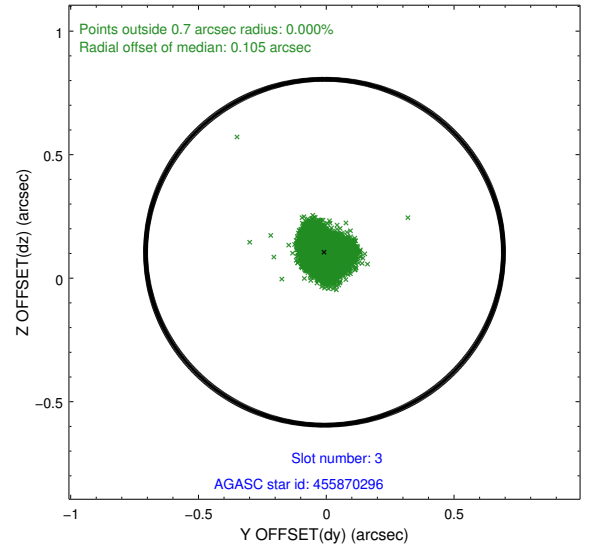
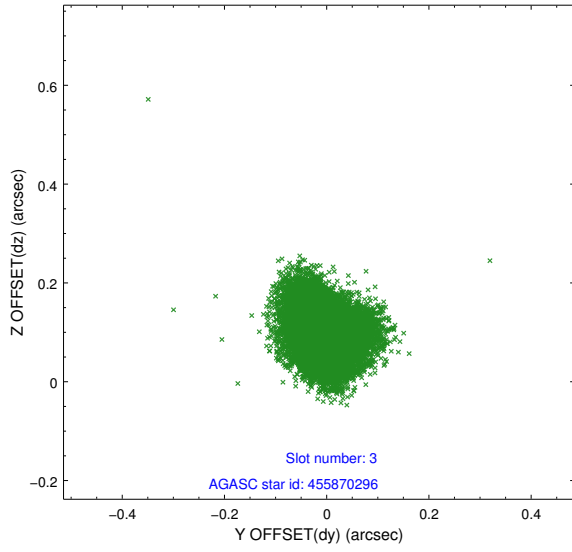
Slot Statistics

slot	status	id	mag	n_pts	med_dy	med_dz	dr1	dr2	ra	dec	mean_y	mean_z
0	FID	ACIS-I-1	7.24	5035	0.047	-0.027	0.012	0.028	0.000000	0.000000	932.19	-834.87
1	FID	ACIS-I-5	7.23	5034	-0.172	0.060	0.012	0.024	0.000000	0.000000	-1815.99	1062.67
2	FID	ACIS-I-6	7.25	5034	0.034	0.039	0.013	0.021	0.000000	0.000000	397.59	1707.31
3	GUIDE	455870296	7.31	10070	-0.007	0.105	0.071	0.107	214.629779	52.033323	408.84	-1497.06
4	GUIDE	455871352	8.12	10070	-0.067	0.143	0.065	0.101	215.099961	52.172669	1550.18	-1670.39
5	GUIDE	505806936	7.01	10071	0.047	0.007	0.068	0.114	213.820815	52.535927	-17.27	1005.85
6	GUIDE	505812376	7.57	10064	-0.266	-0.069	0.059	0.091	214.039537	52.937930	1204.89	1915.43
7	GUIDE	504894728	8.82	10064	0.281	-0.182	0.081	0.129	213.220892	52.722550	-695.35	2313.61

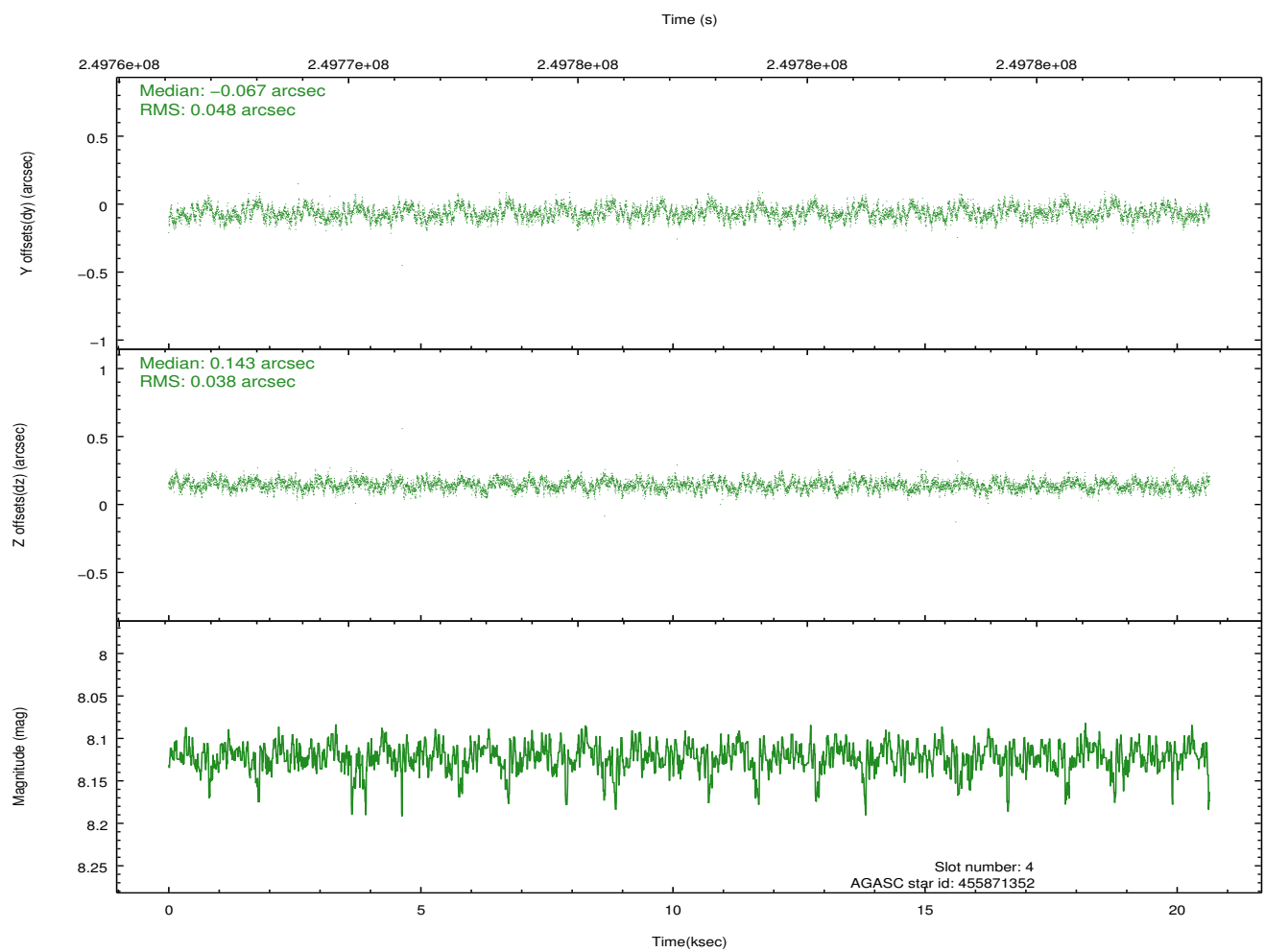
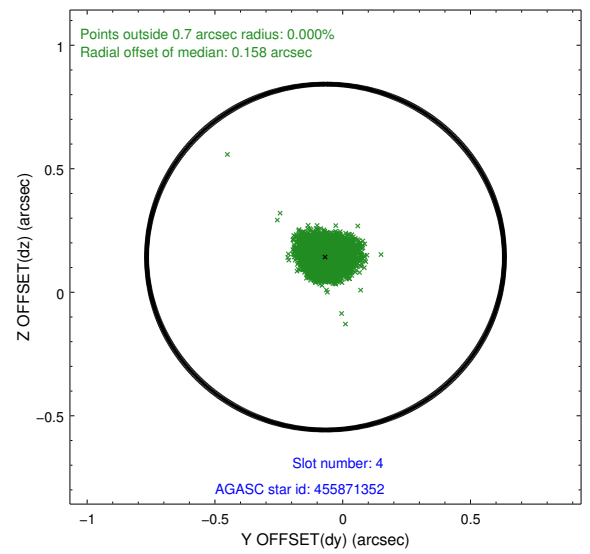
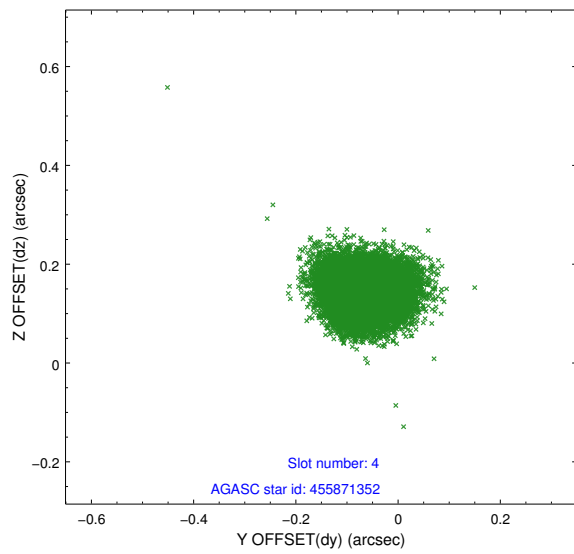
∞

2.4 Star Slots

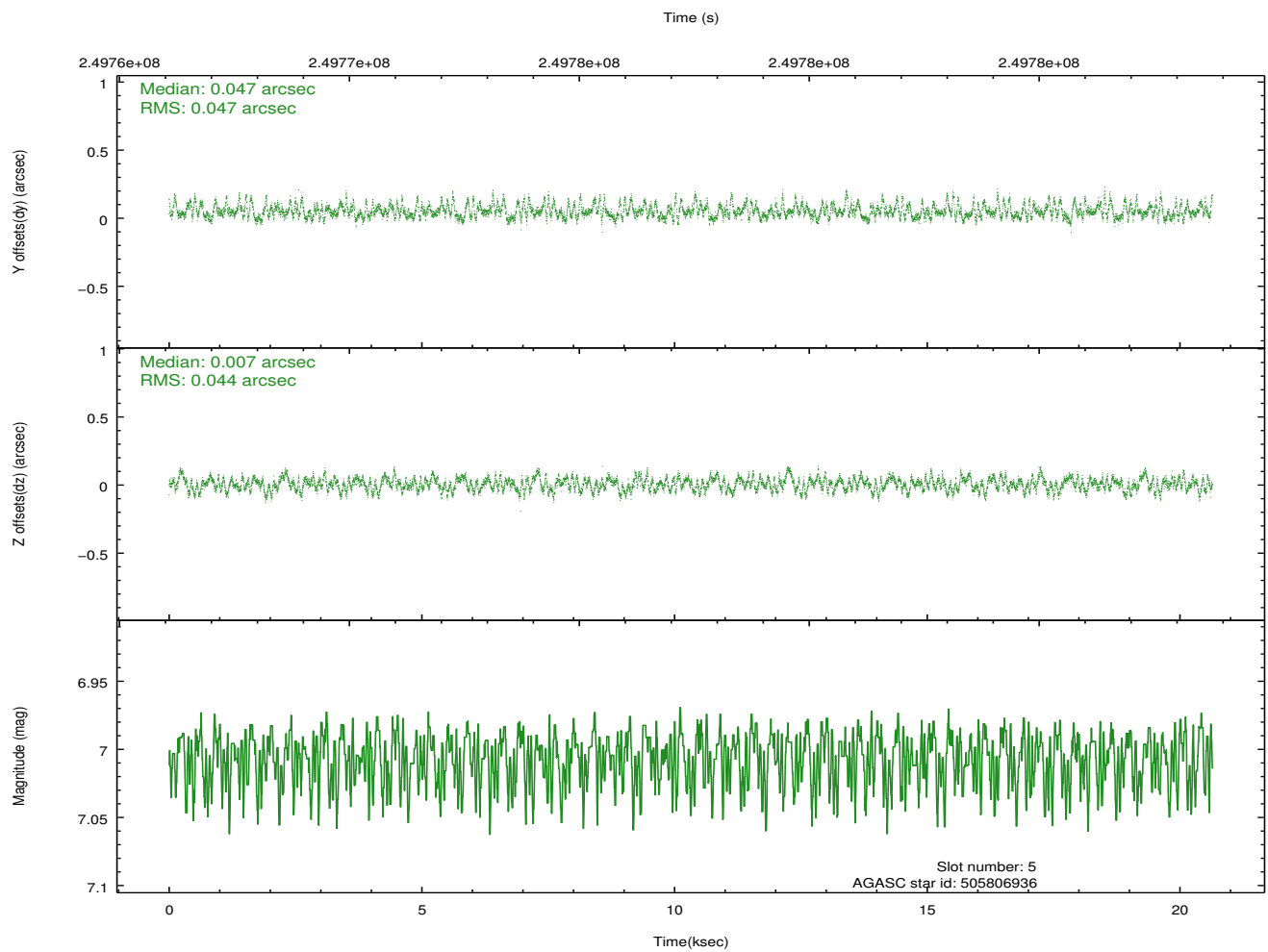
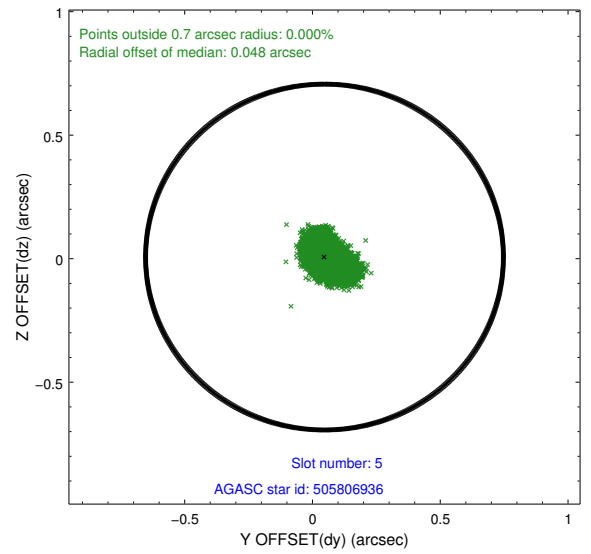
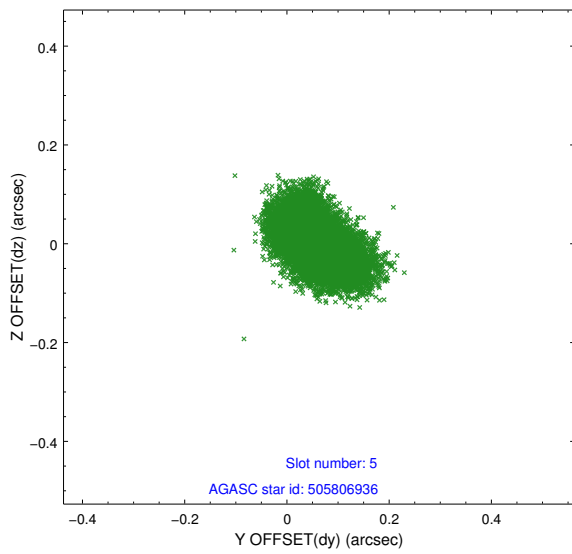
2.4.1 Slot 3



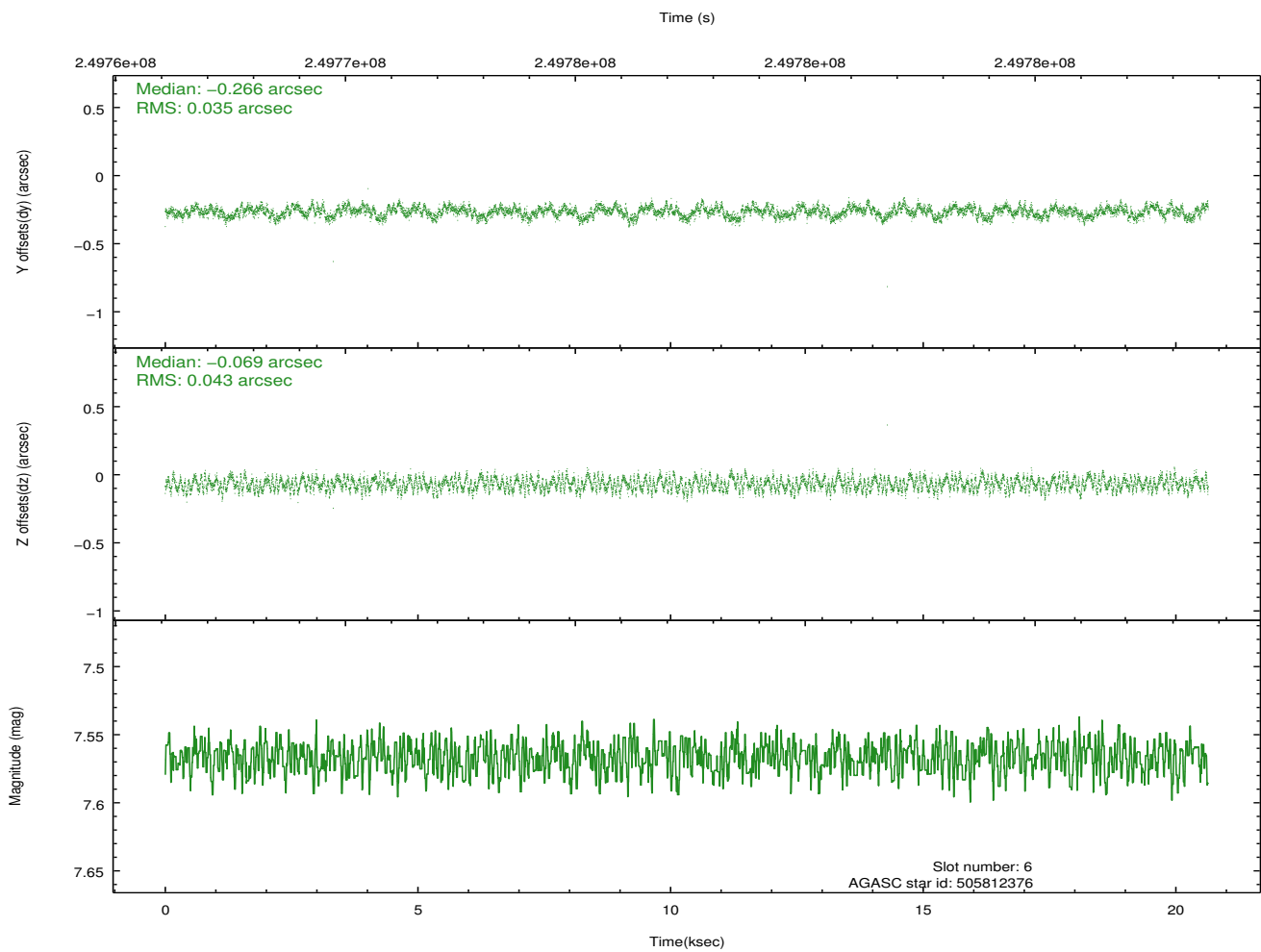
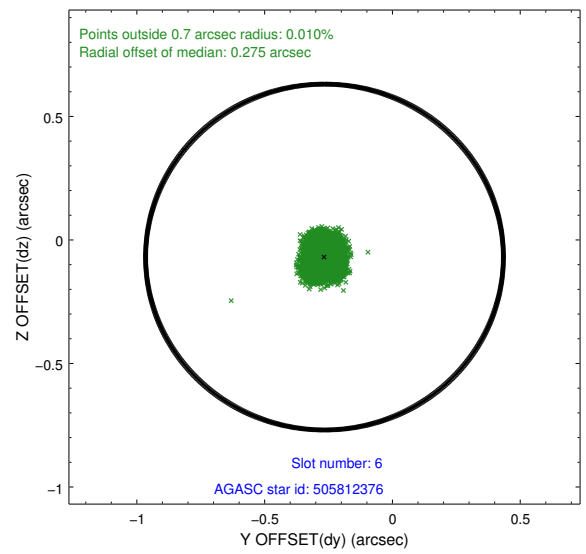
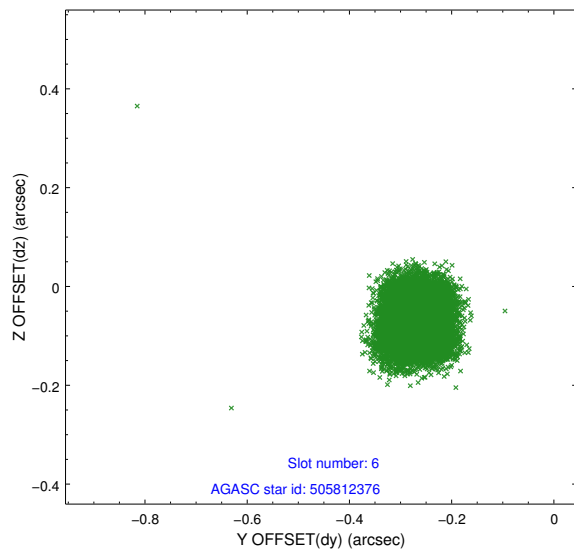
2.4.2 Slot 4



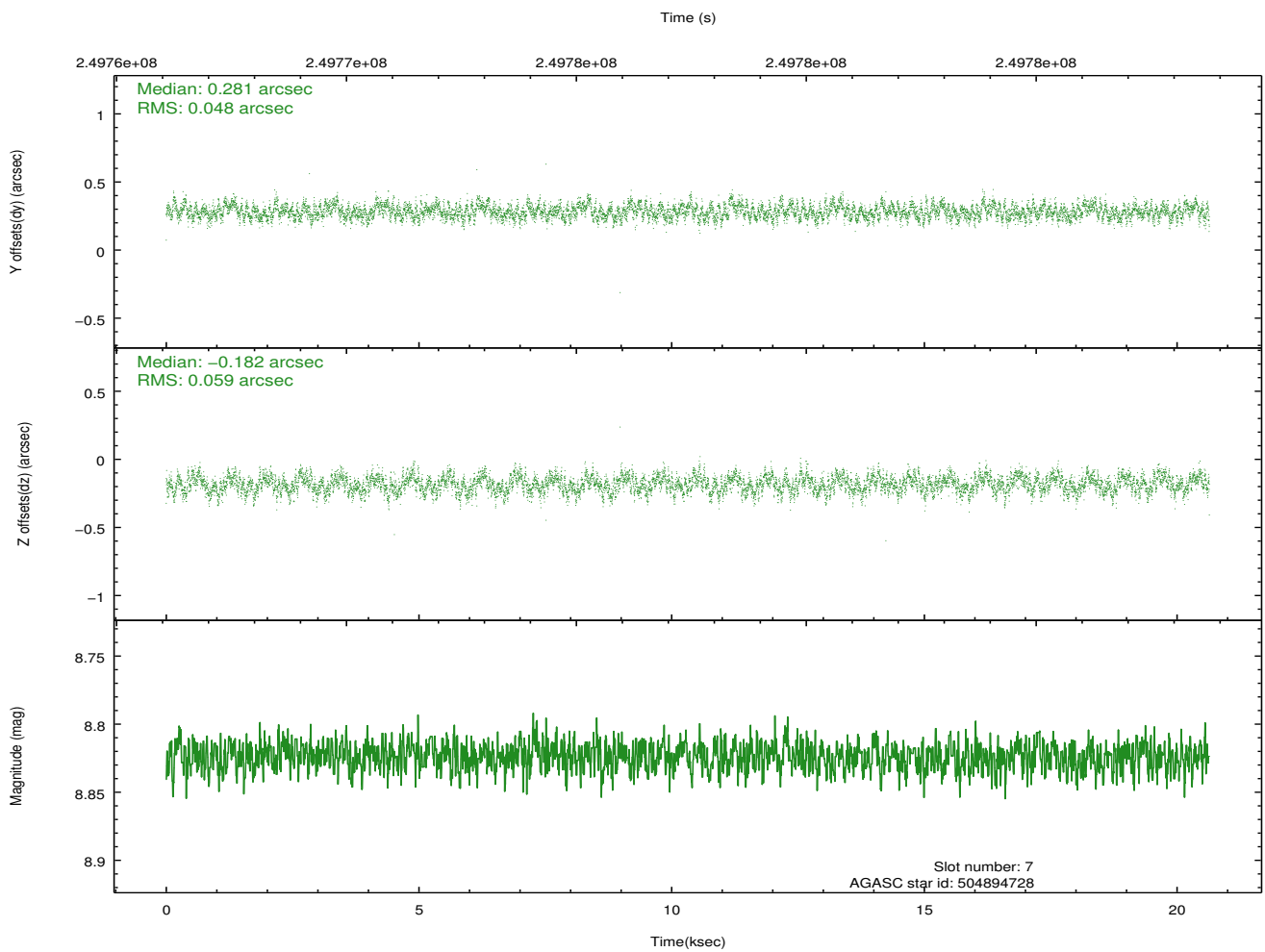
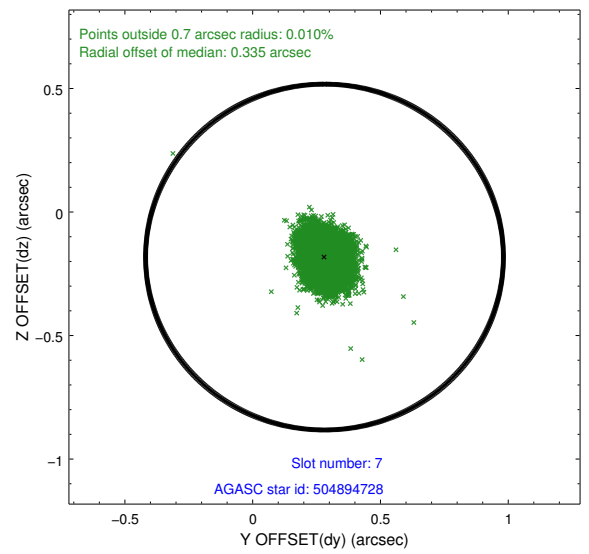
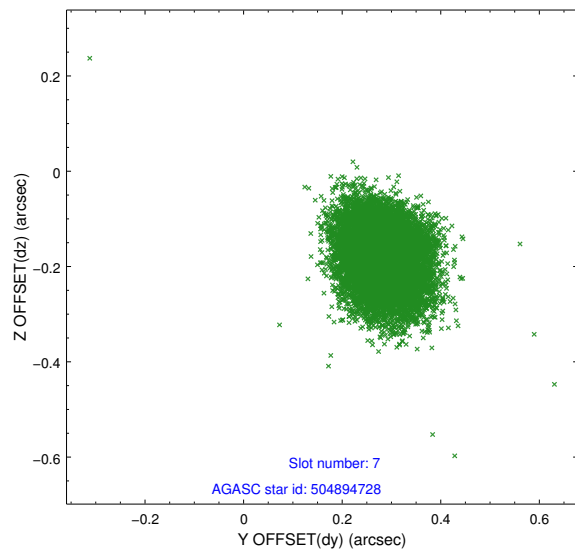
2.4.3 Slot 5



2.4.4 Slot 6

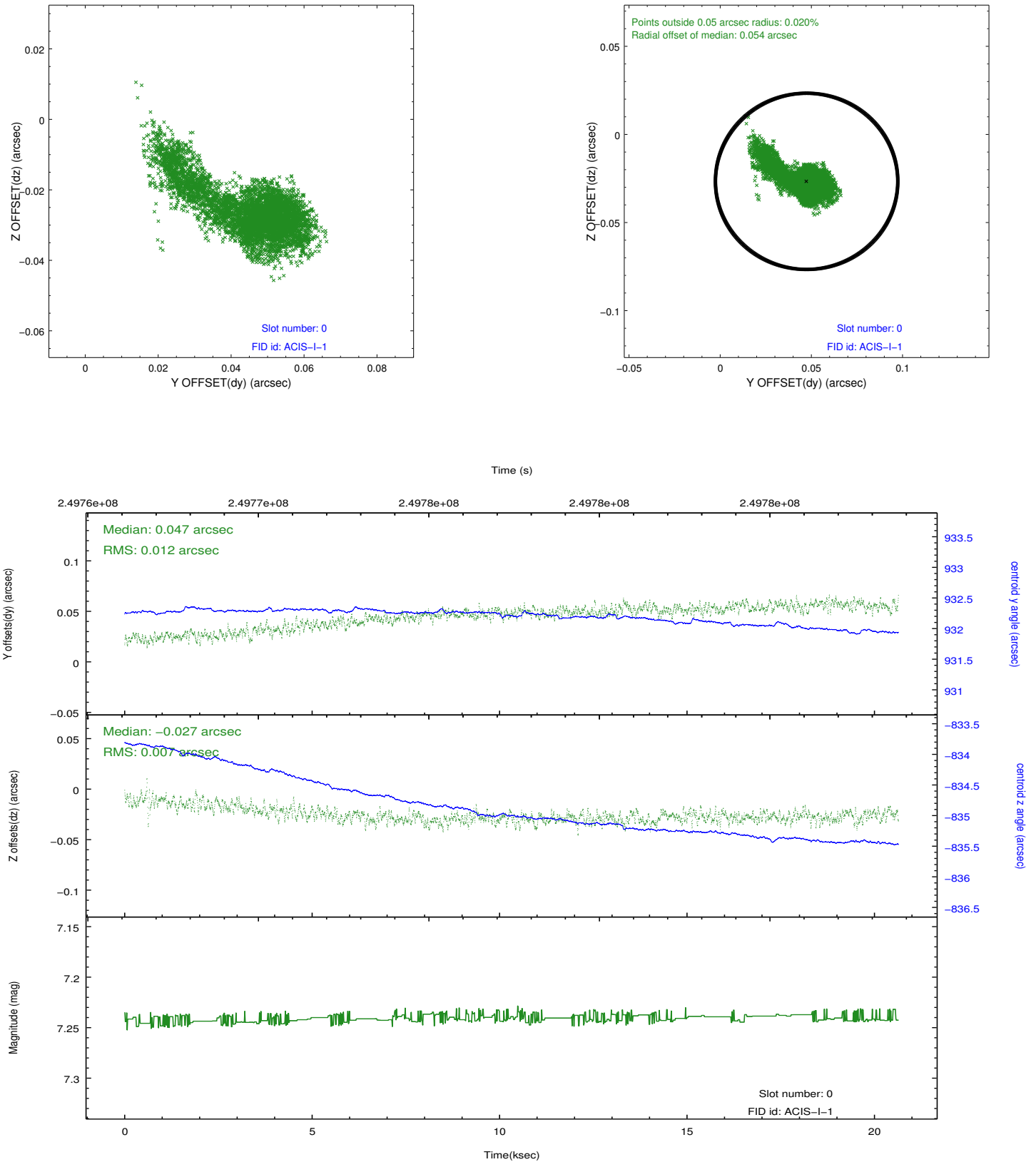


2.4.5 Slot 7

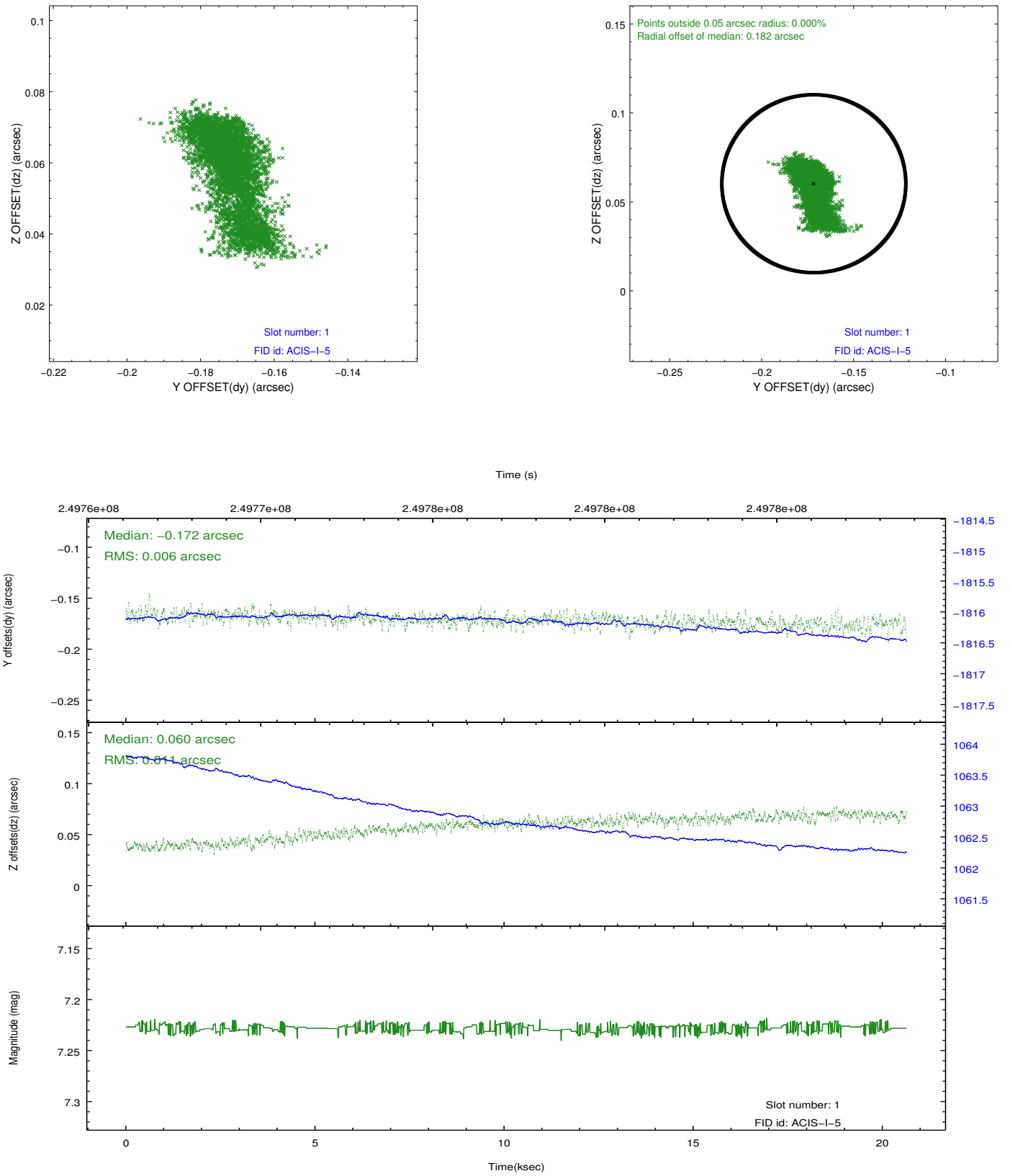


2.5 FID Slots

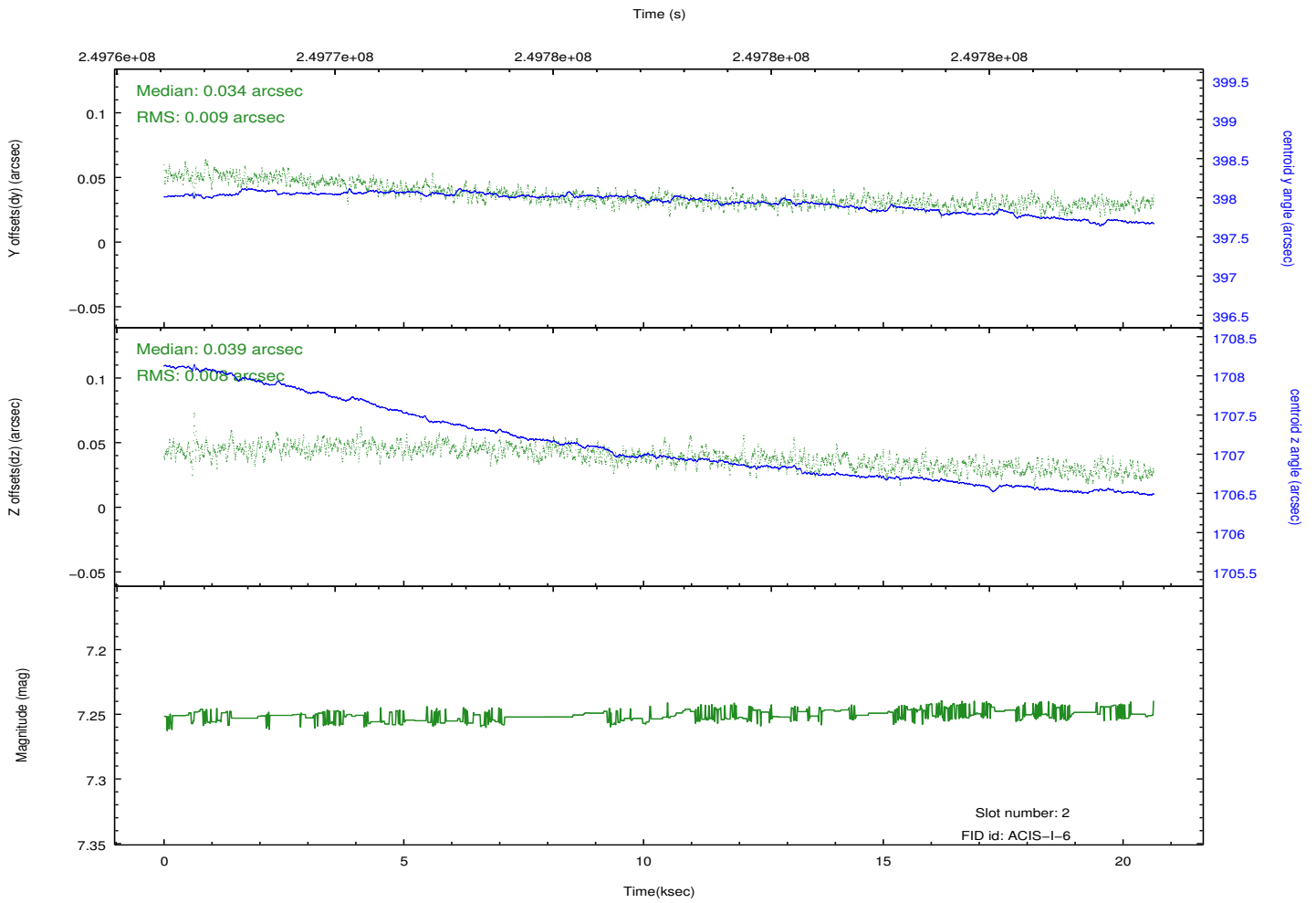
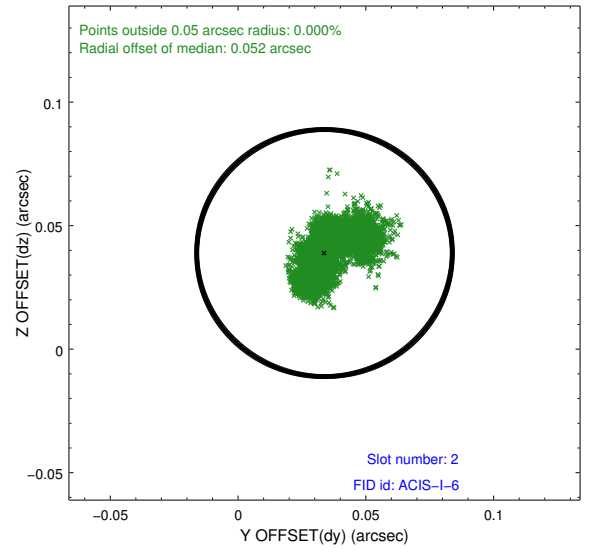
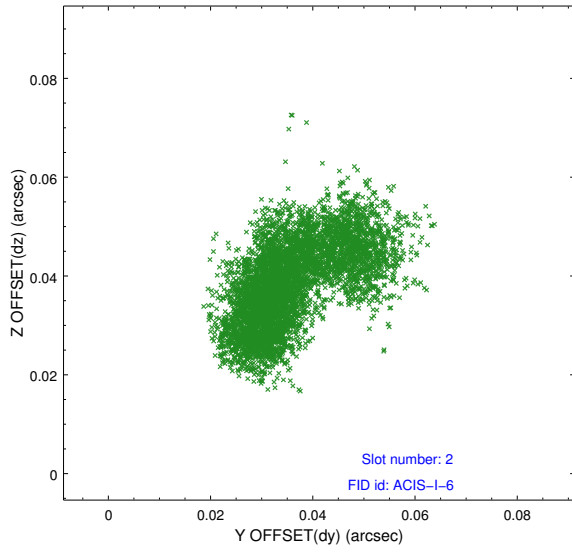
2.5.1 Slot 0



2.5.2 Slot 1



2.5.3 Slot 2



A Summary

A.1 Status

V&V Scientist	Beth Sundheim
V&V Date (YYYY-MM-DD)	2012.03.21
V&V Edition	1
V&V Disposition and Status	OK
V&V Charge Time	20.63669

A.2 Comments

Roll preference met.