

V&V Reference Report

L2 ASCDS Version : 8.4.3

Observation 7326 - L2 Version 2
Chandra X-Ray Center

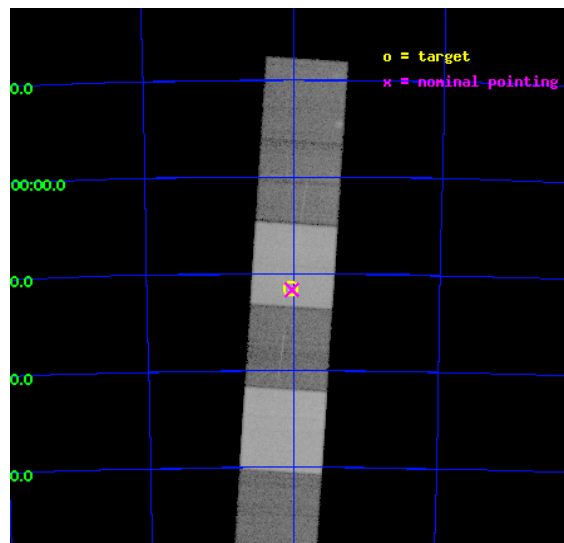
L2 Processing Date : Apr 3 2012

Contents

1	Front	2
2	OBI	3
2.1	OBI	3
2.1.1	Images	3
2.1.2	Bias	3
2.1.3	Parameters	4
2.1.4	Events	4
2.2	Compared Parameters	5
2.3	Aspect	6
2.4	Star Slots	9
2.4.1	Slot 3	9
2.4.2	Slot 4	10
2.4.3	Slot 5	11
2.4.4	Slot 6	12
2.4.5	Slot 7	13
2.5	FID Slots	14
2.5.1	Slot 0	14
2.5.2	Slot 1	15
2.5.3	Slot 2	16
3	Gratings	17
3.1	HEG Arm	17
3.2	MEG Arm	19
A	Summary	21
A.1	Status	21
A.2	Comments	21

1 Front

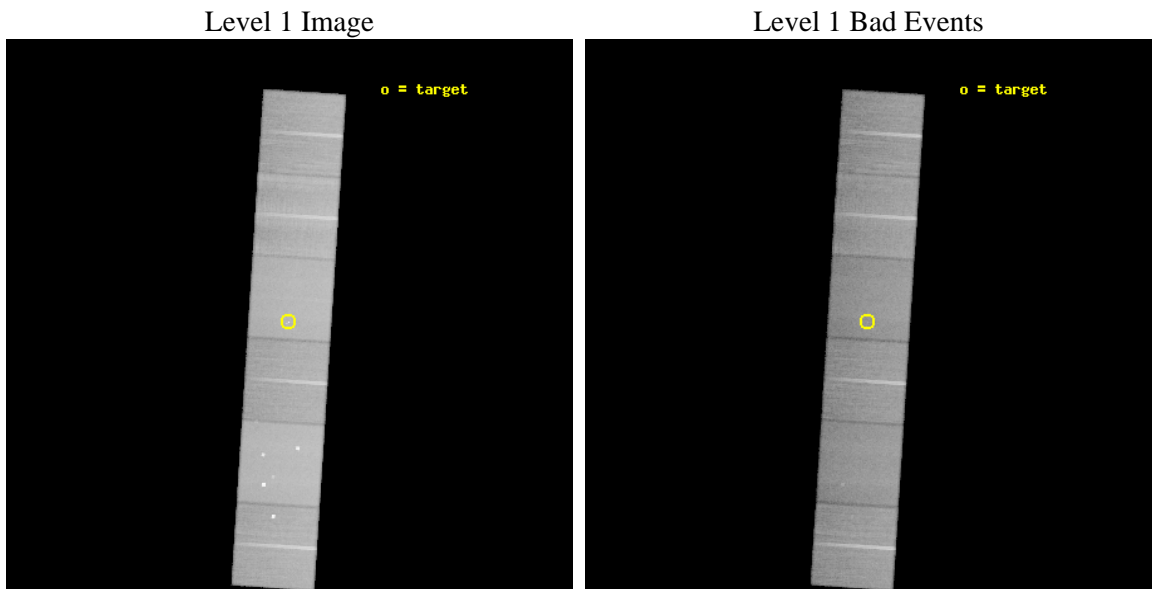
seq_num	200418	Sequence number
obs_id	7326	Observation id
title	Young Stellar Objects in the epsilon Chamaeleontis Group: Probing Proto-planetary Disk Systems in the HD 102437 Field.	Proposal title
observer	Prof Claude Canizares	Principal investigator
object	HD104237A (DX Cha)	Source name
dtcycle	0	
cycle	P	events from which exps? Prim/Second/Both
ra_targ	180.02125	Observer's specified target RA [deg]
dec_targ	-78.192944	Observer's specified target Dec [deg]
ra_nom	180.01347297281	Nominal RA [deg]
dec_nom	-78.194300995809	Nominal Dec [deg]
roll_nom	273.69159097905	Nominal Roll [deg]
revision	2	Processing version of data
ontime	46195.199827909	Sum of GTIs [s]
livetime	45610.248392279	Livetime [s]
ontime4	46195.199827909	Sum of GTIs [s]
ontime5	46195.199827909	Sum of GTIs [s]
ontime6	46195.199827909	Sum of GTIs [s]
ontime7	46195.199827909	Sum of GTIs [s]
ontime8	46195.199827909	Sum of GTIs [s]
ontime9	46191.958847642	Sum of GTIs [s]
l2events	678196	Number of level 2 events



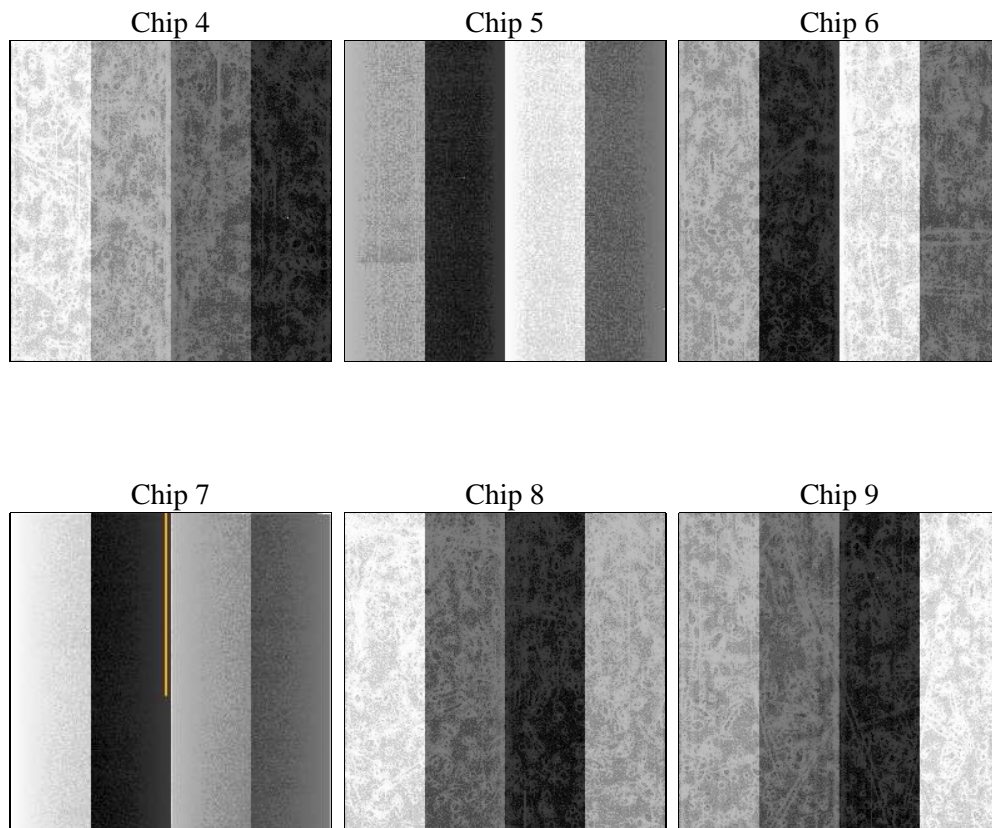
2 OBI

2.1 OBI

2.1.1 Images



2.1.2 Bias



2.1.3 Parameters

obi_num	0	Obi number	sched_exp_time	46013.973000	[s] Scheduled observation exposure time
ascdsver	8.4.3	Processing system revision	ontime	46195.199827909	Sum of GTIs [s]
caldbver	4.4.9	 	ontime4	46195.199827909	Sum of GTIs [s]
date	2012-04-03T11:57:45	Date and time of file creation	ontime5	46195.199827909	Sum of GTIs [s]
revision	2	Processing version of data	ontime6	46195.199827909	Sum of GTIs [s]
			ontime7	46195.199827909	Sum of GTIs [s]
			ontime8	46195.199827909	Sum of GTIs [s]
			ontime9	46191.958847642	Sum of GTIs [s]
			l1events	3054234	Number of level 1 events

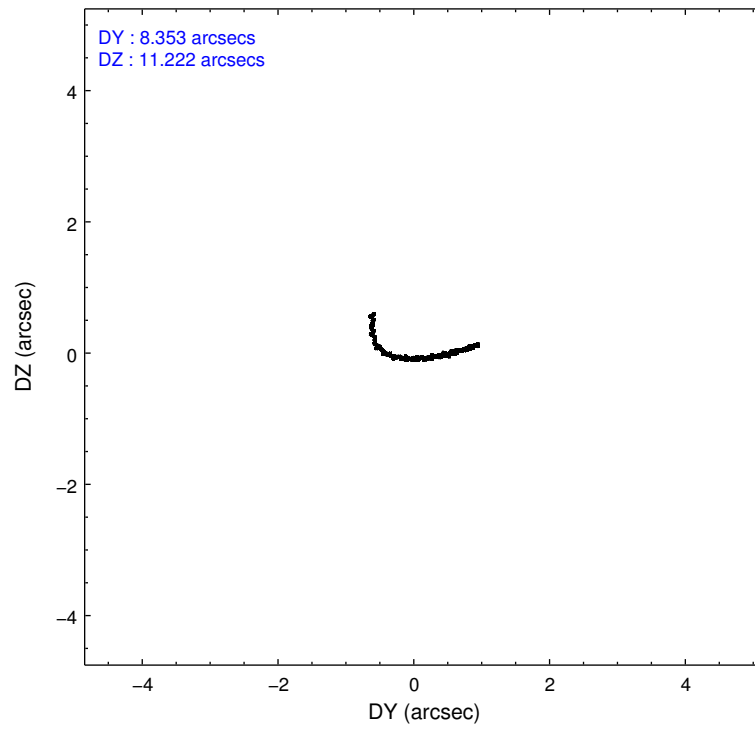
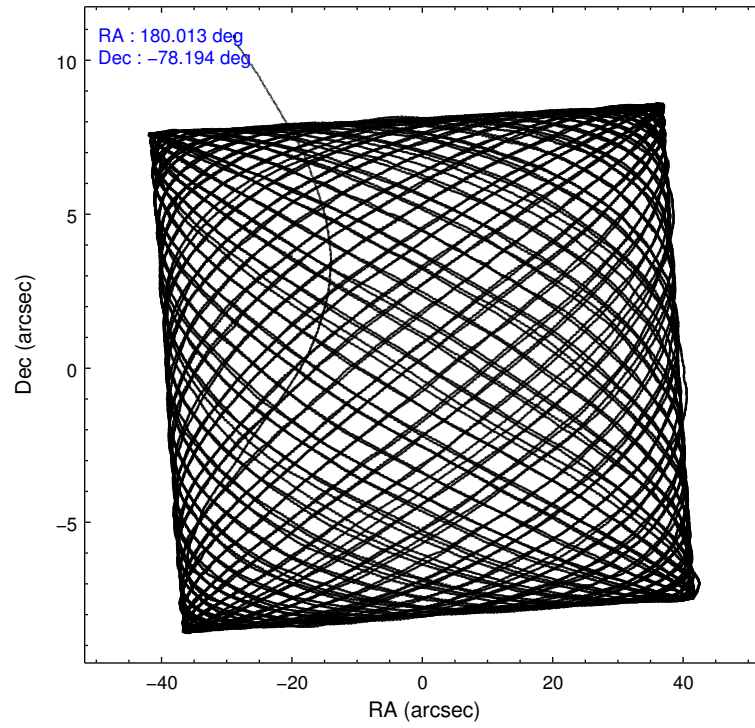
2.1.4 Events

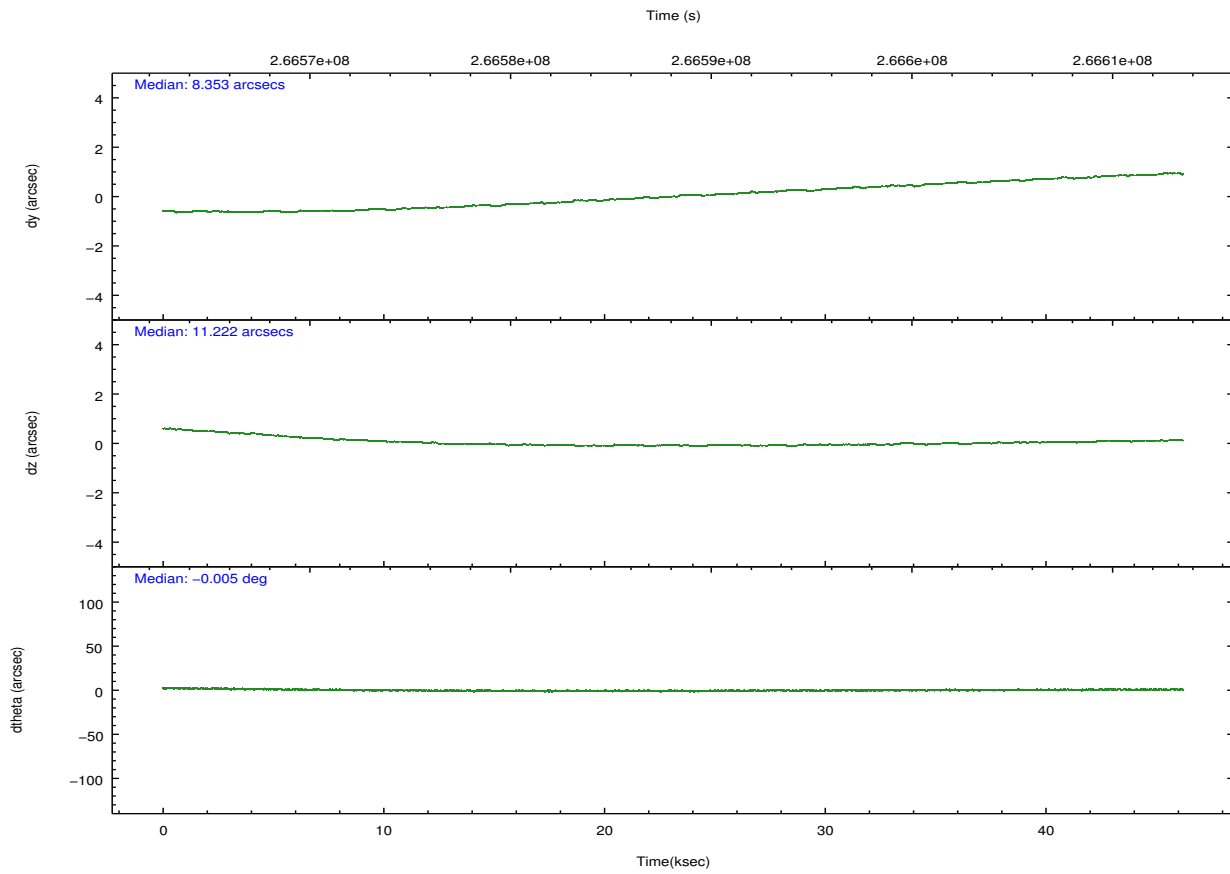
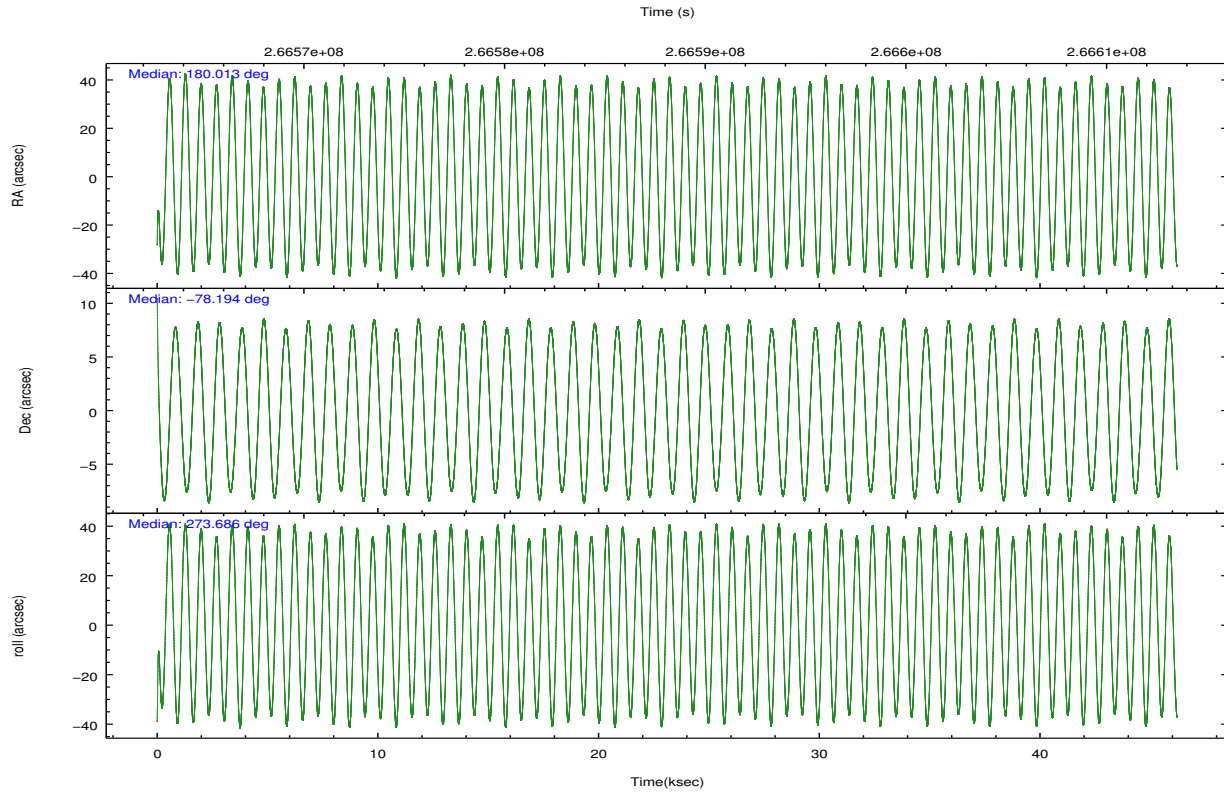
	ccd 4	ccd 5	ccd 6	ccd 7	ccd 8	ccd 9		ccd 4	ccd 5	ccd 6	ccd 7	ccd 8	ccd 9
level 1 events	472867	635124	421492	564407	539620	420724	grade 0 events	31279	31770	19231	20612	37154	21384
rejected events	412649	338480	372608	328980	421156	369443		6%	5%	4%	3%	6%	5%
rejected %	87%	53%	88%	58%	78%	87%	grade 1 events	552	1218	225	563	390	293
								0%	0%	0%	0%	0%	0%
							grade 2 events	10817	91876	10504	47566	26374	10114
								2%	14%	2%	8%	4%	2%
							grade 3 events	5156	10856	4691	20546	12373	5087
								1%	1%	1%	3%	2%	1%
							grade 4 events	4935	10602	4634	20401	11710	4775
								1%	1%	1%	3%	2%	1%
							grade 5 events	18853	45912	19170	54396	25891	20776
								3%	7%	4%	9%	4%	4%
							grade 6 events	8077	151734	9859	126480	30924	9949
								1%	23%	2%	22%	5%	2%
							grade 7 events	393198	291156	353178	273843	394804	348346
								83%	45%	83%	48%	73%	82%

2.2 Compared Parameters

Parameter	Planned	Actual	Parameter	Planned	Actual
Instrument	ACIS	ACIS	Obspar format version number	7	7
Detector	ACIS-456789	ACIS-456789	Obspar file type	PREDICTED	ACTUAL
Grating	HETG	HETG	Obspar update status	NONE	UPDATED
Data mode	FAINT	FAINT	Number of optional ACIS chips dropped	0	0
Observation mode	POINTING	POINTING	On-chip summing requested	N	N
[deg] Pointing RA	179.938276	180.0134729728136	Subarray requested	NONE	NONE
[deg] Pointing Dec	-78.171803	-78.19430099580882	Alternating exposures requested	N	N
[deg] Pointing Roll	273.461366	273.691590979049	[s] Primary exposure time	0.000000	3.2
[mm] SIM focus pos	-0.684267	-0.6828225247311905			
[mm] SIM defocus	0	0.001444936568705701			
[mm] SIM translation stage pos	-190.132523	-190.1400660498719			
[mm] SIM translation stage offset	0	0.00754346686406393			
[s] Observation start time (MET)	266565181.184000	266563947.07222			
Observation start date	2006-06-13T05:51:56	2006-06-13T05:32:27			
[s] Observation end time (MET)	266611195.184000	266611420.46194			
Observation end date	2006-06-13T18:38:50	2006-06-13T18:43:40			
Read mode	TIMED	TIMED			

2.3 Aspect



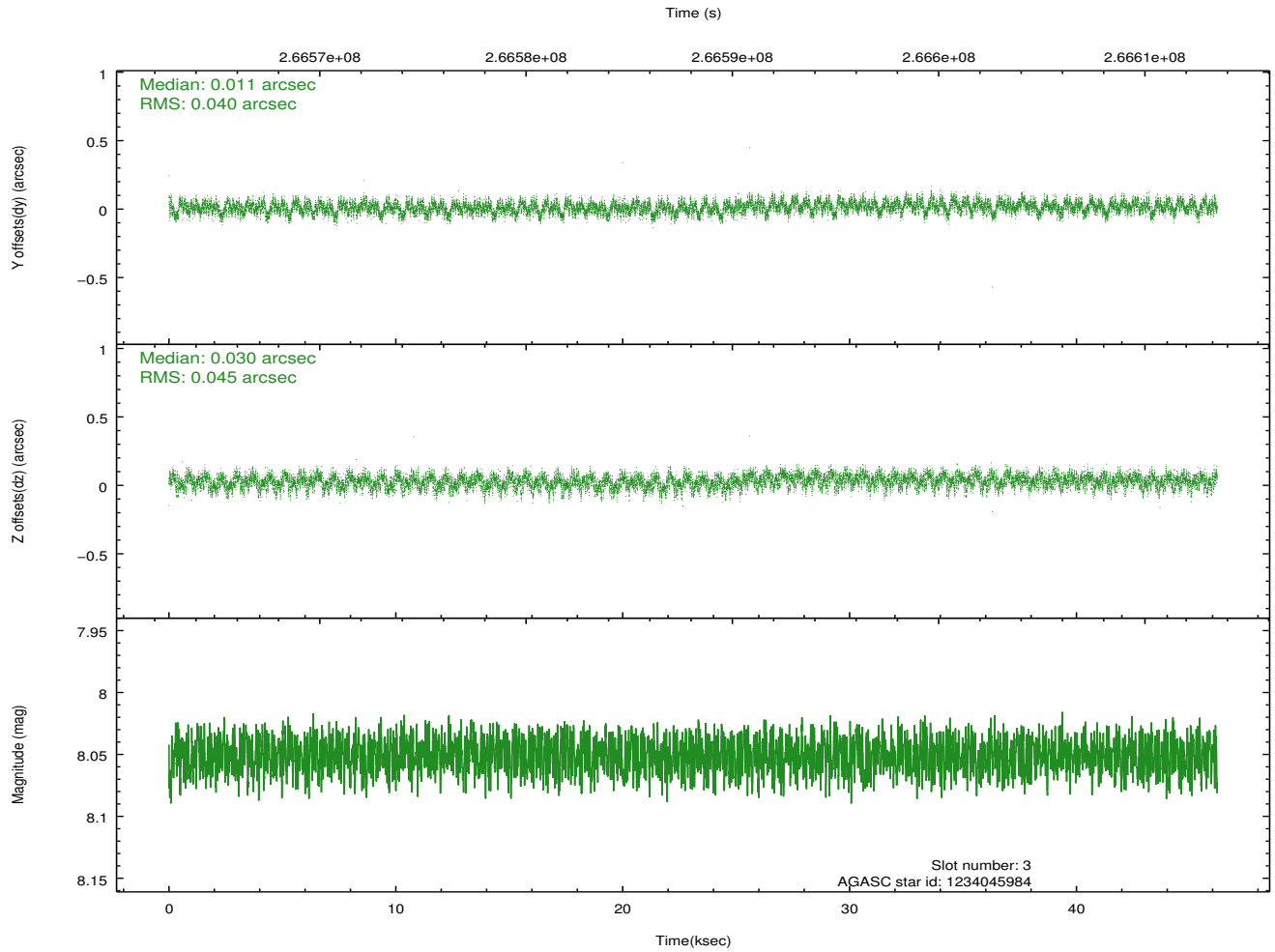
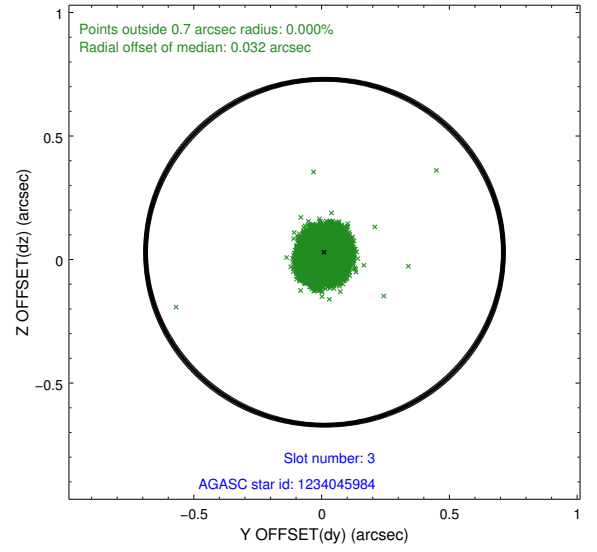
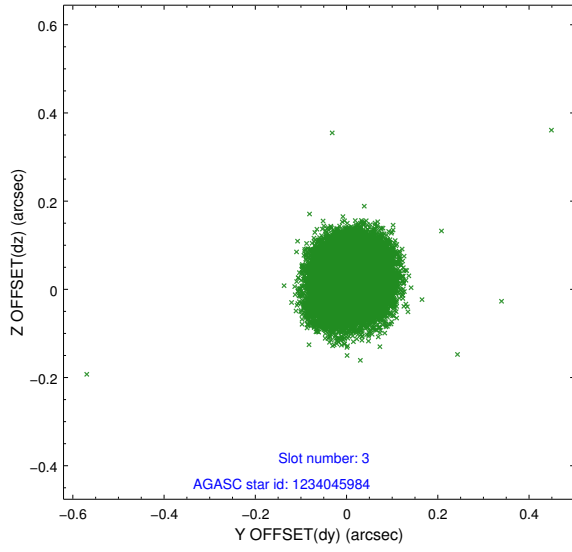


Slot Statistics

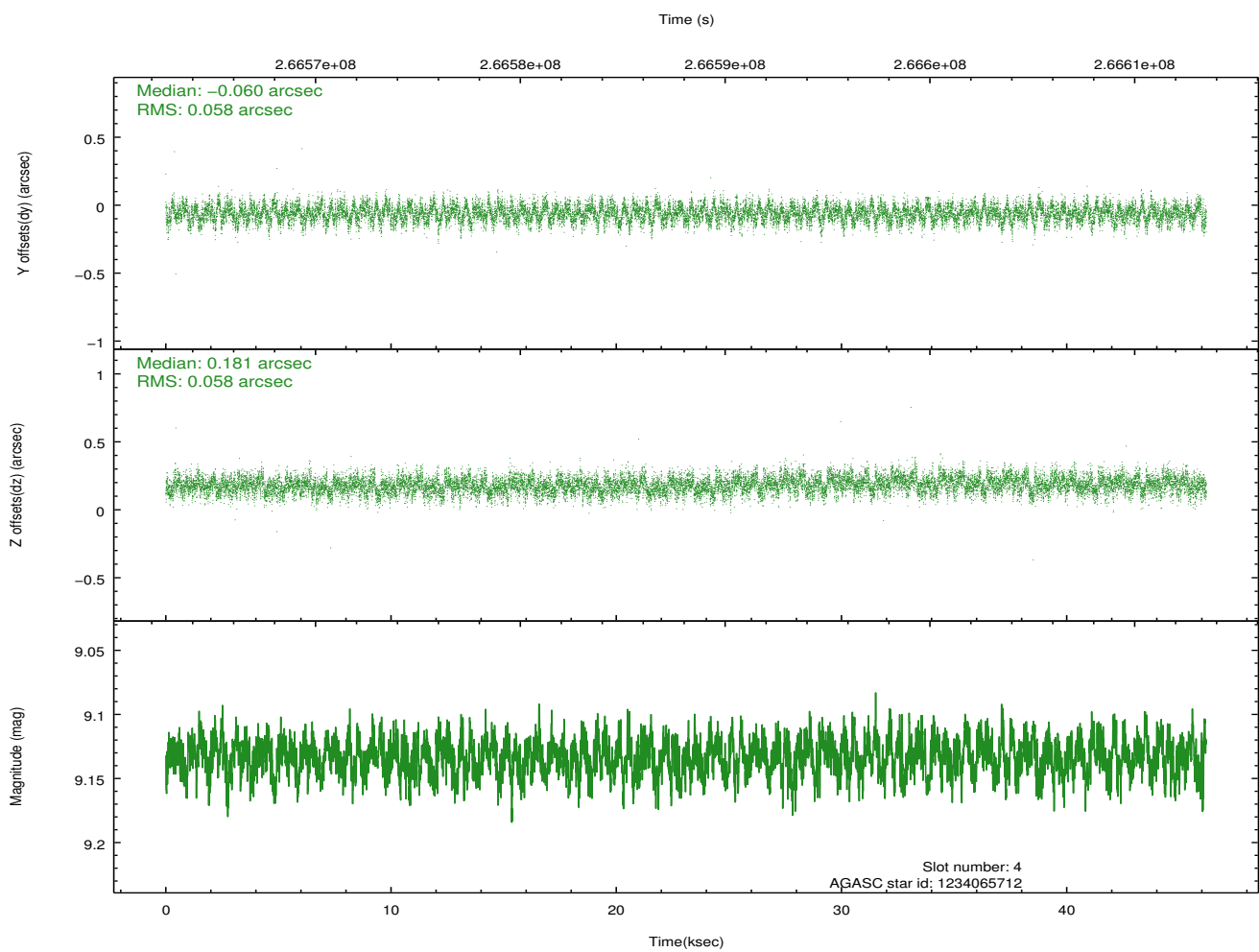
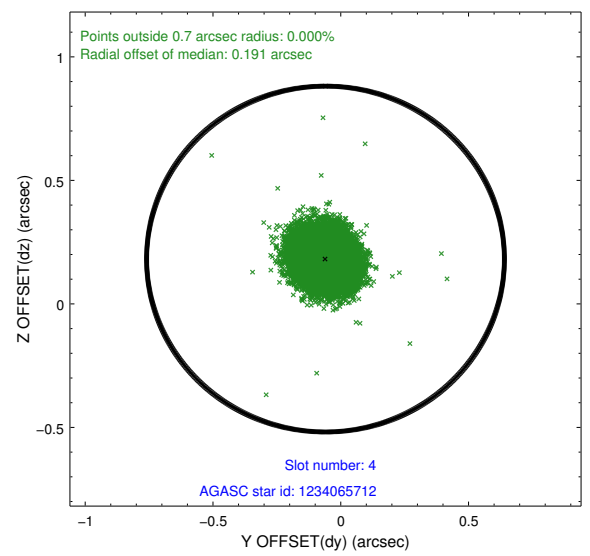
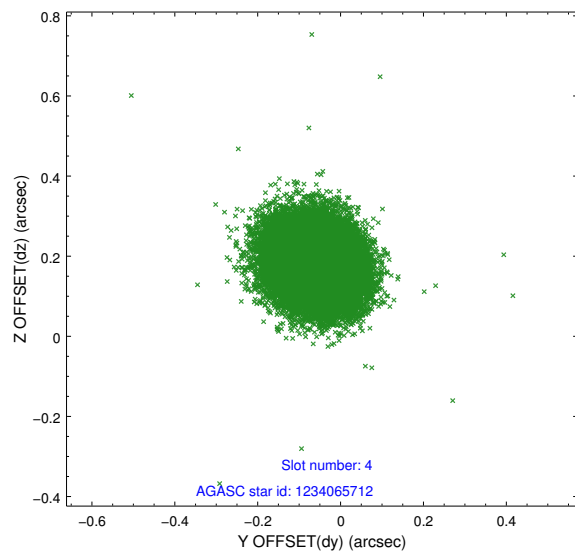
slot	status	id	mag	n_pts	med_dy	med_dz	dr1	dr2	ra	dec	mean_y	mean_z
0	FID	ACIS-S-2	7.11	11270	-0.036	-0.022	0.010	0.017	0.000000	0.000000	-761.19	-1732.59
1	FID	ACIS-S-4	7.21	11269	0.132	0.023	0.018	0.027	0.000000	0.000000	2152.23	175.98
2	FID	ACIS-S-5	7.23	11270	-0.128	0.007	0.018	0.025	0.000000	0.000000	-1814.16	169.57
3	GUIDE	1234045984	8.05	22536	0.011	0.030	0.065	0.103	176.913419	-77.887125	-1101.90	-2222.05
4	GUIDE	1234065712	9.13	22516	-0.060	0.181	0.088	0.139	176.768042	-78.442733	897.63	-2343.41
5	GUIDE	1234181360	7.78	22530	0.037	-0.063	0.053	0.089	181.773022	-78.741114	2143.95	1162.21
6	GUIDE	1234188184	9.06	22506	0.072	-0.140	0.085	0.136	182.228918	-77.688140	-1597.44	1857.73
7	GUIDE	1234704160	7.21	22531	-0.067	-0.007	0.073	0.122	182.282049	-78.781313	2322.05	1504.07

2.4 Star Slots

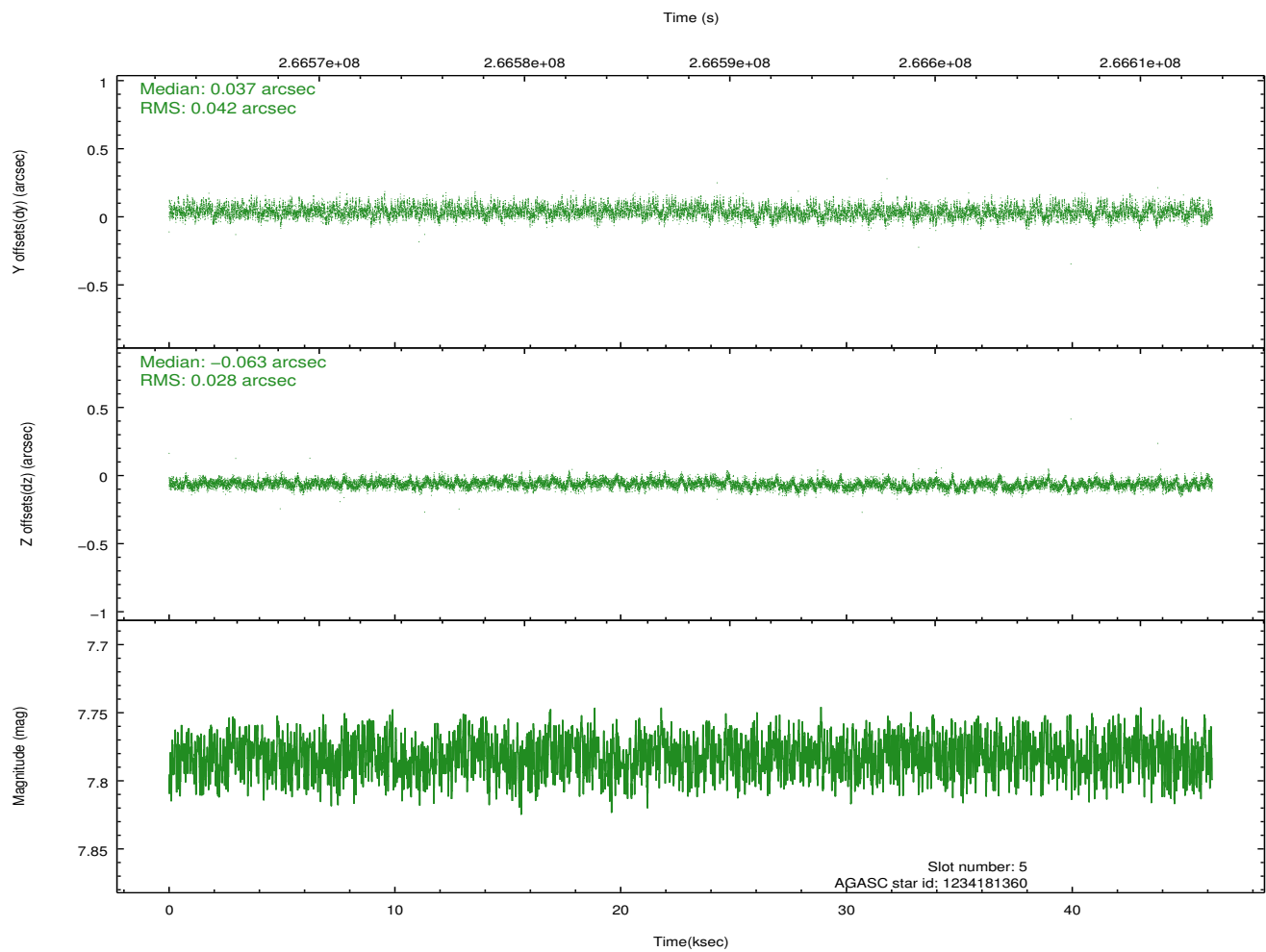
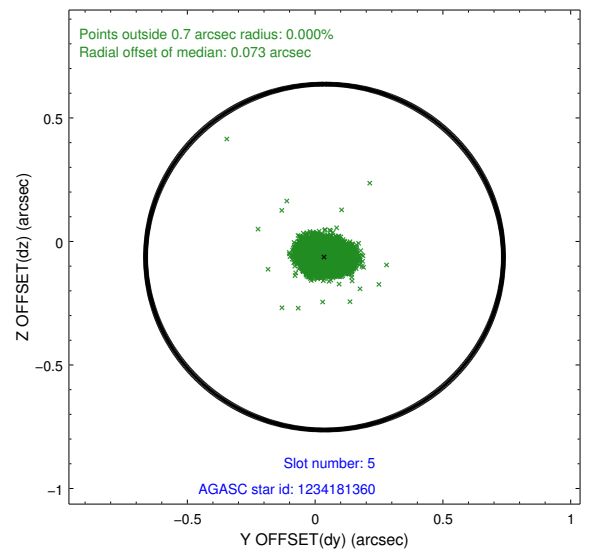
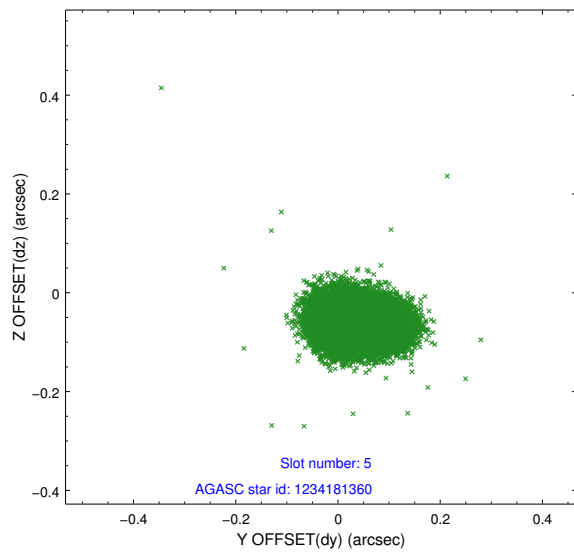
2.4.1 Slot 3



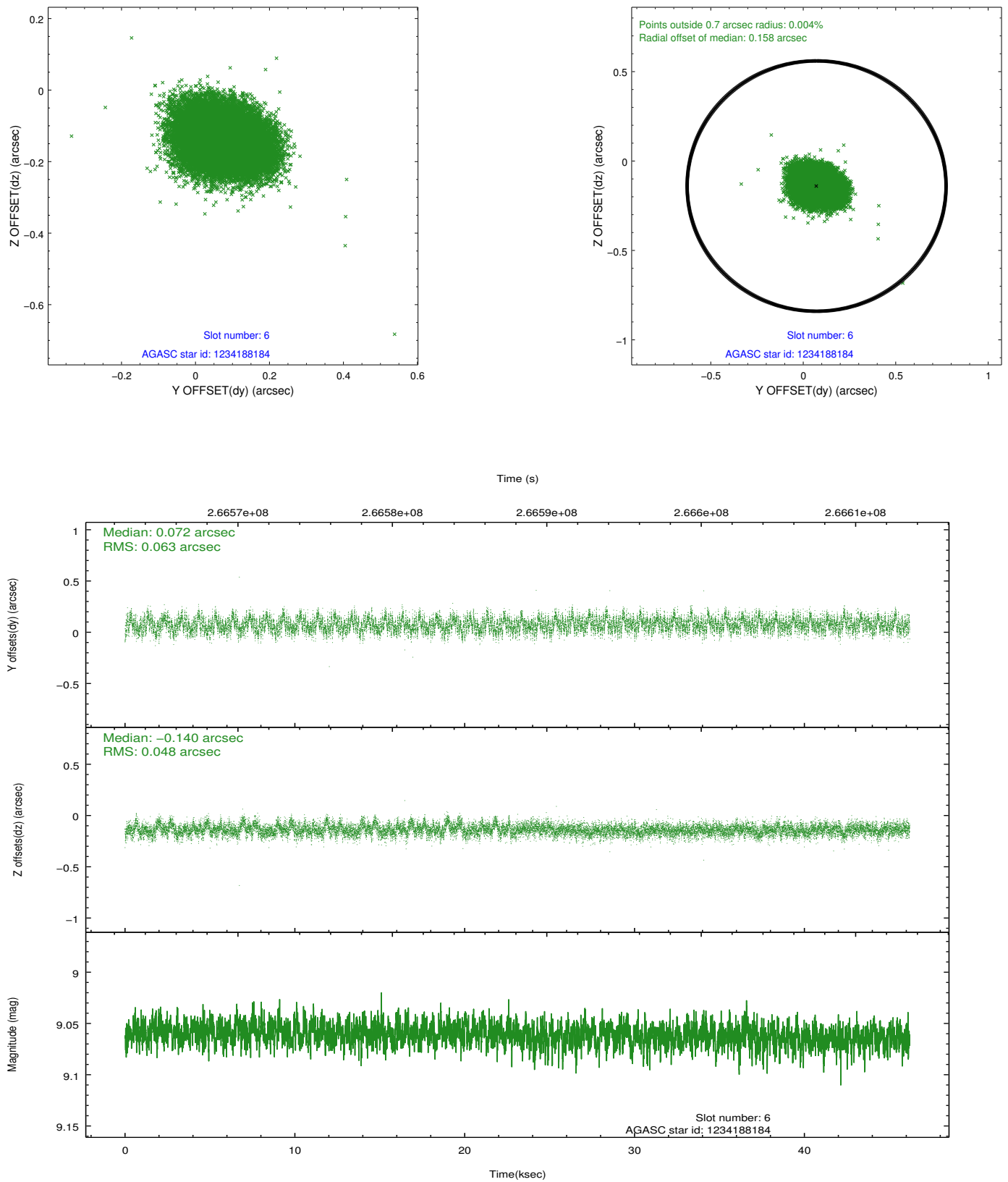
2.4.2 Slot 4



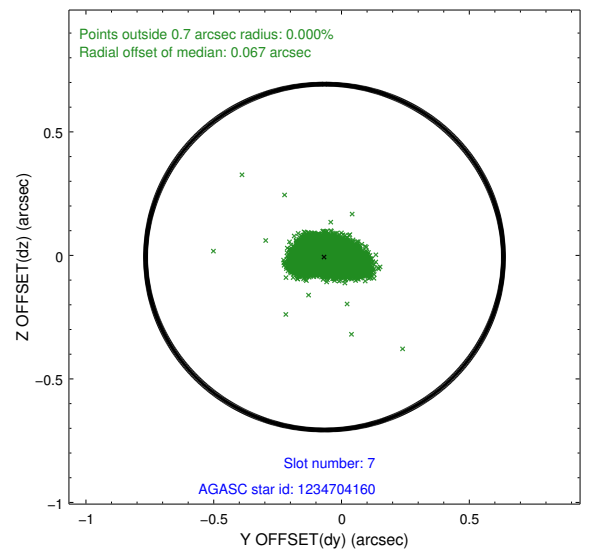
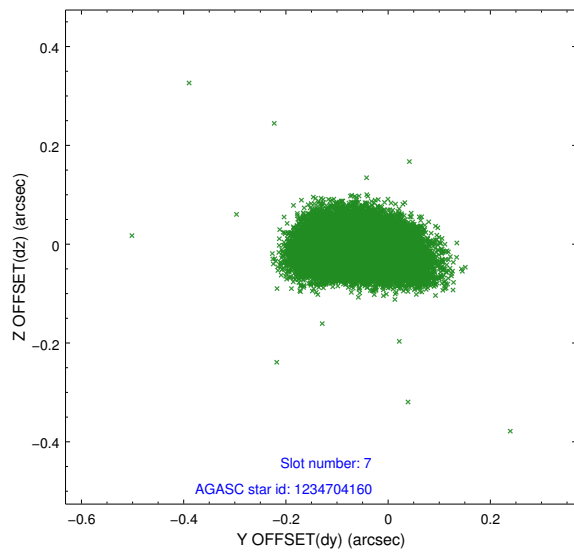
2.4.3 Slot 5



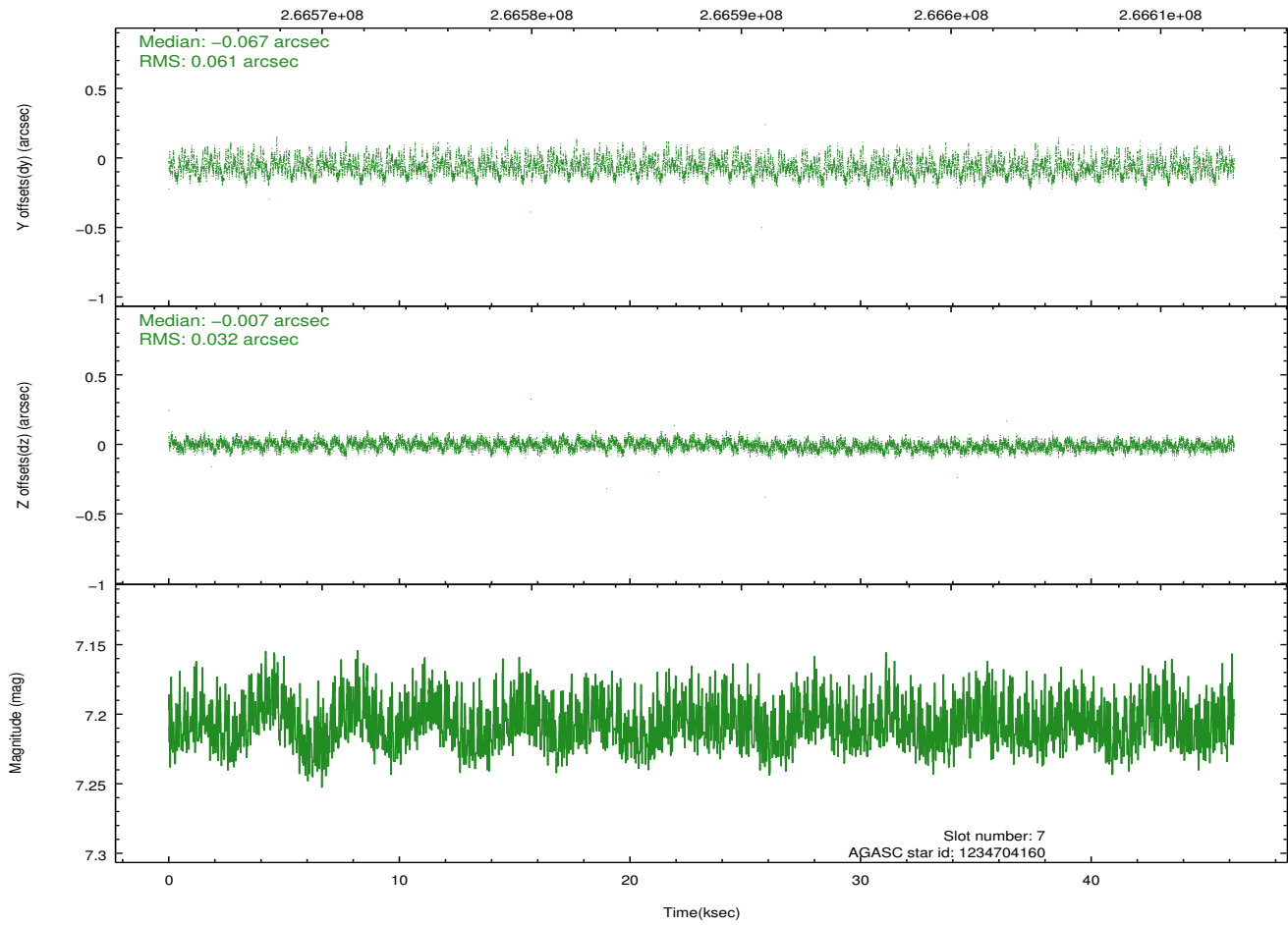
2.4.4 Slot 6



2.4.5 Slot 7

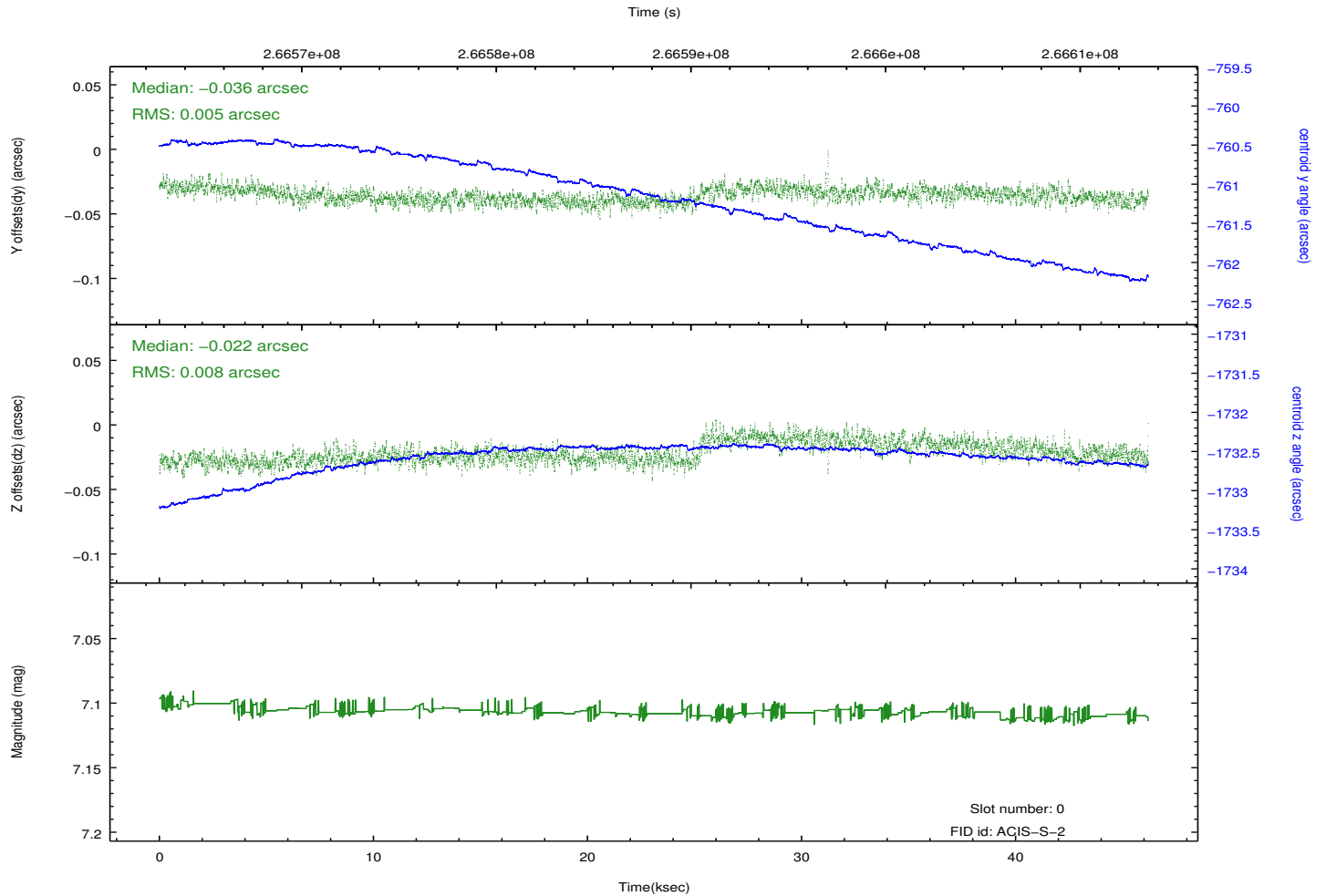
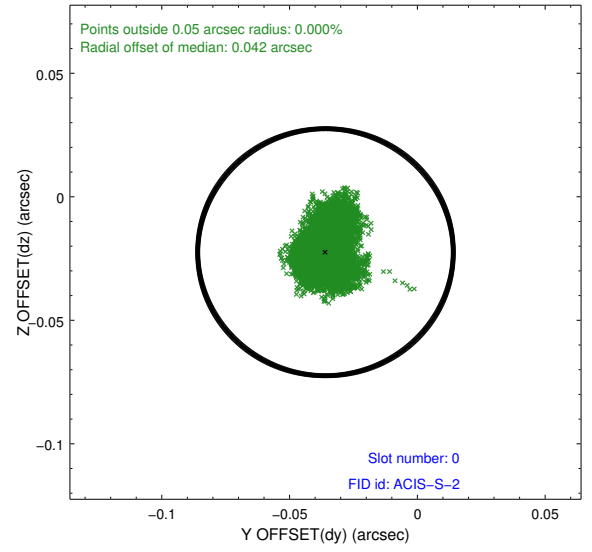
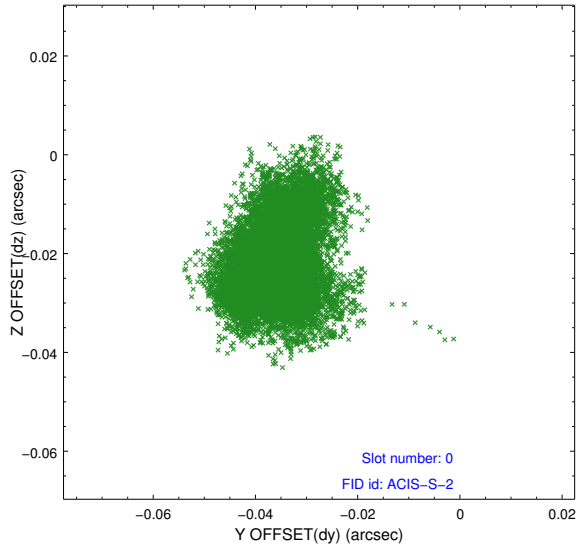


Time (s)

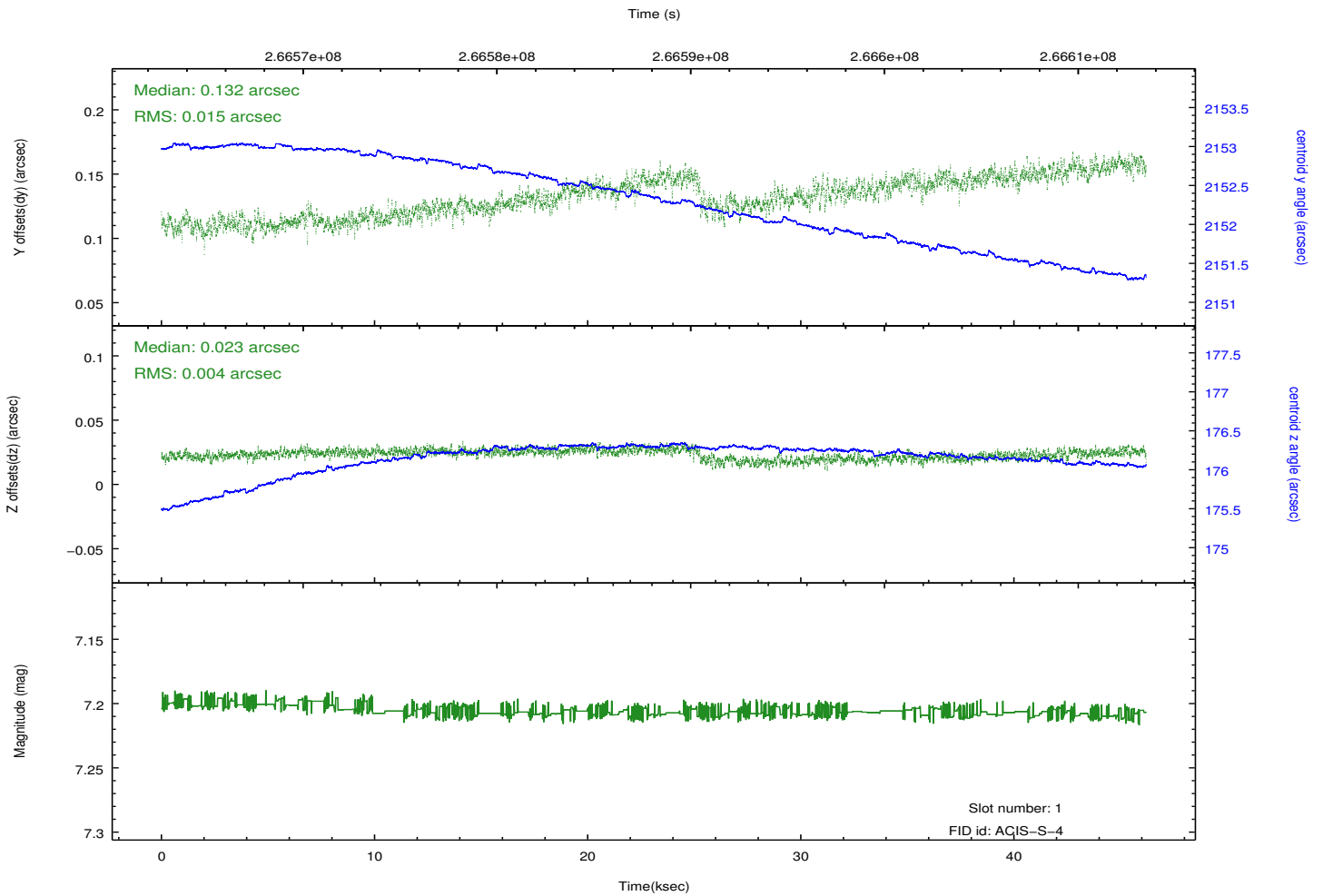
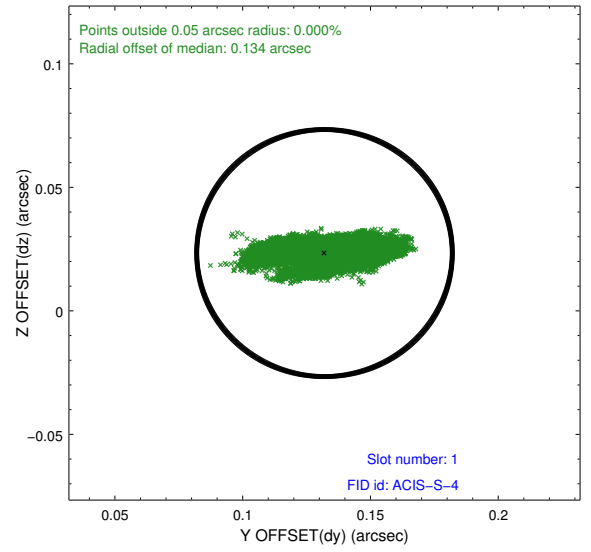
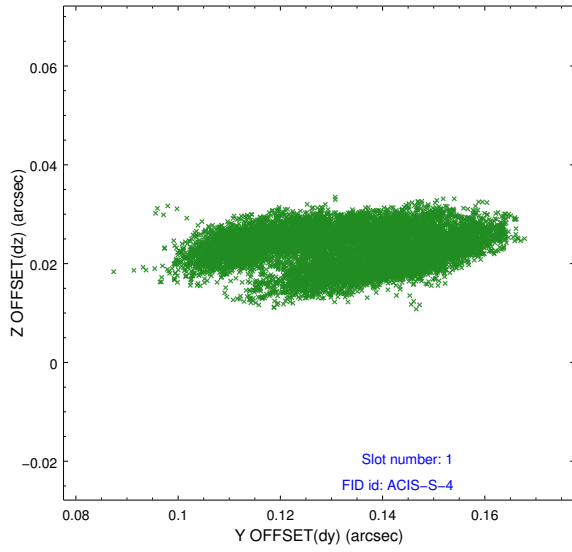


2.5 FID Slots

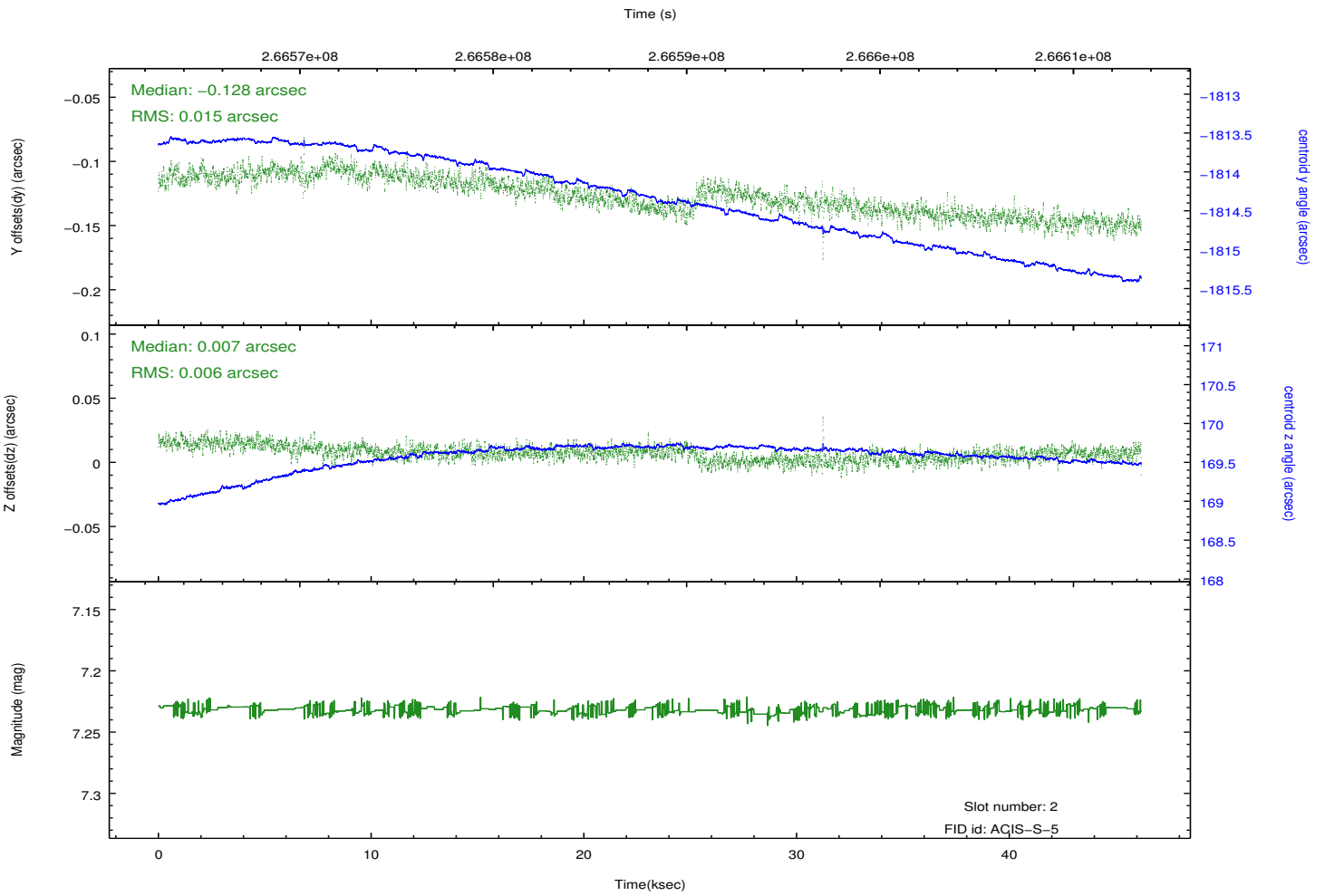
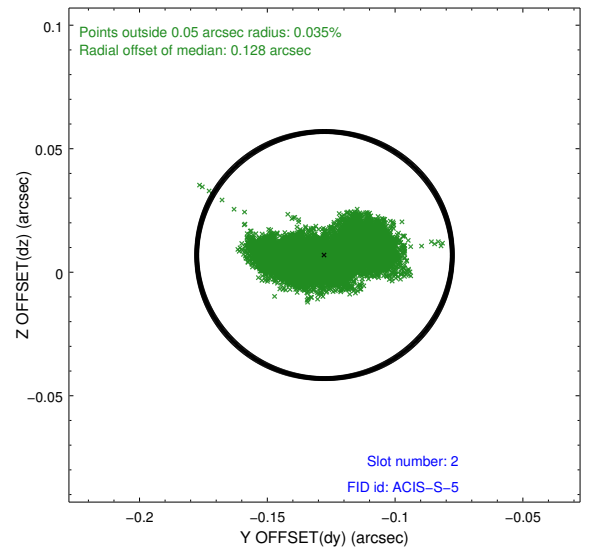
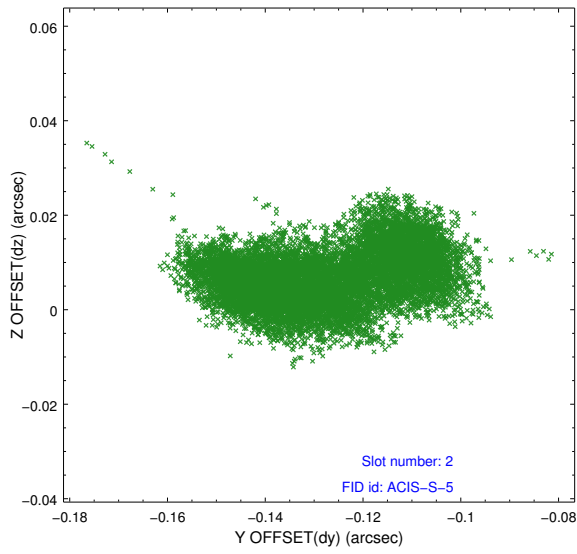
2.5.1 Slot 0



2.5.2 Slot 1



2.5.3 Slot 2

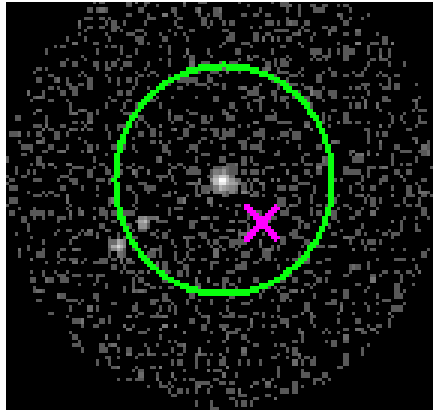


3 Gratings

3.1 HEG Arm



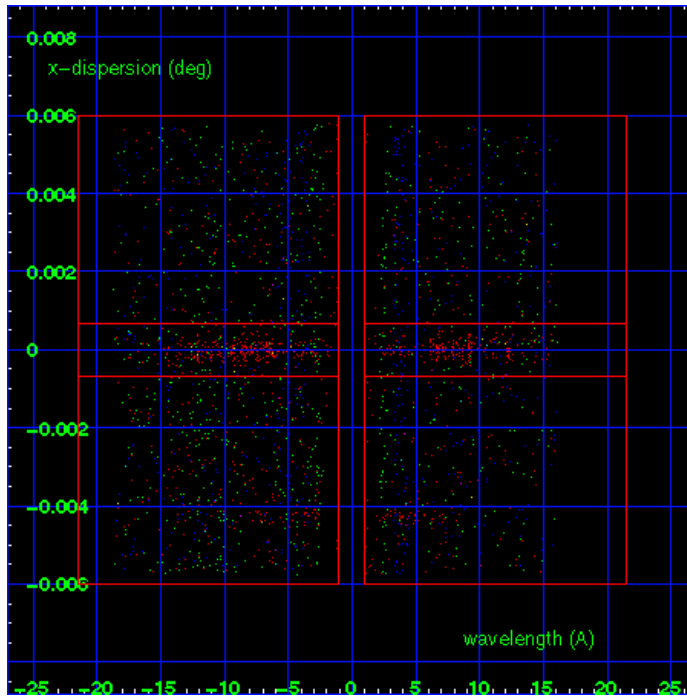
HEG Order Sort 123



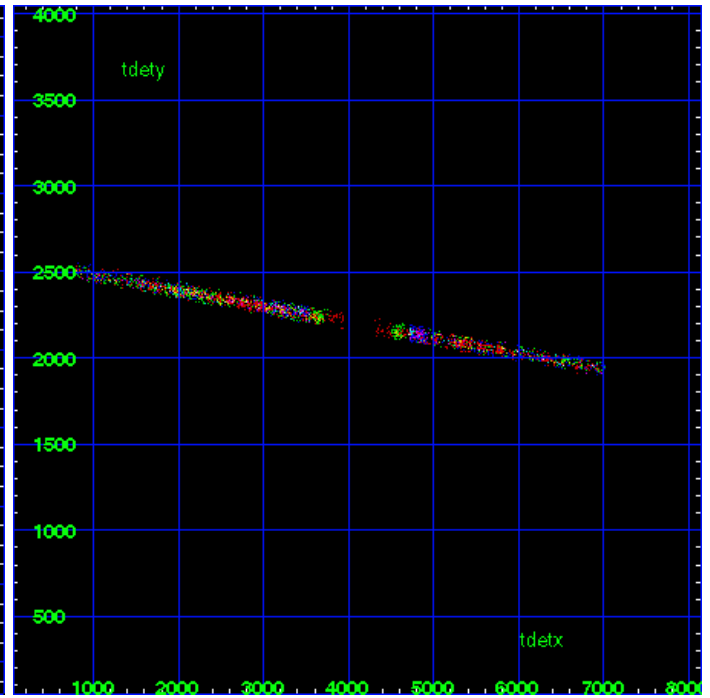
HEG Zero Order



HEG Order Sort ALL

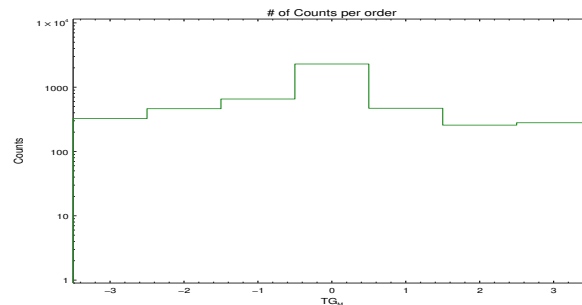


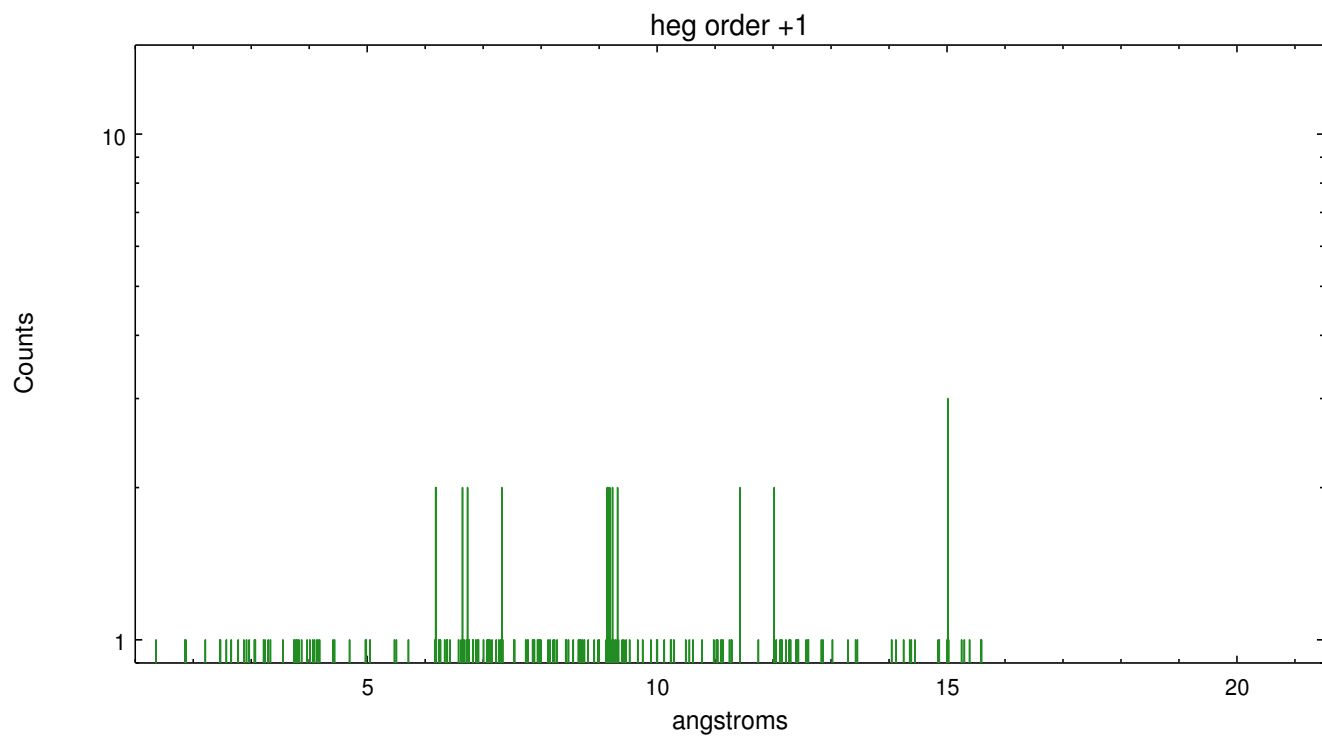
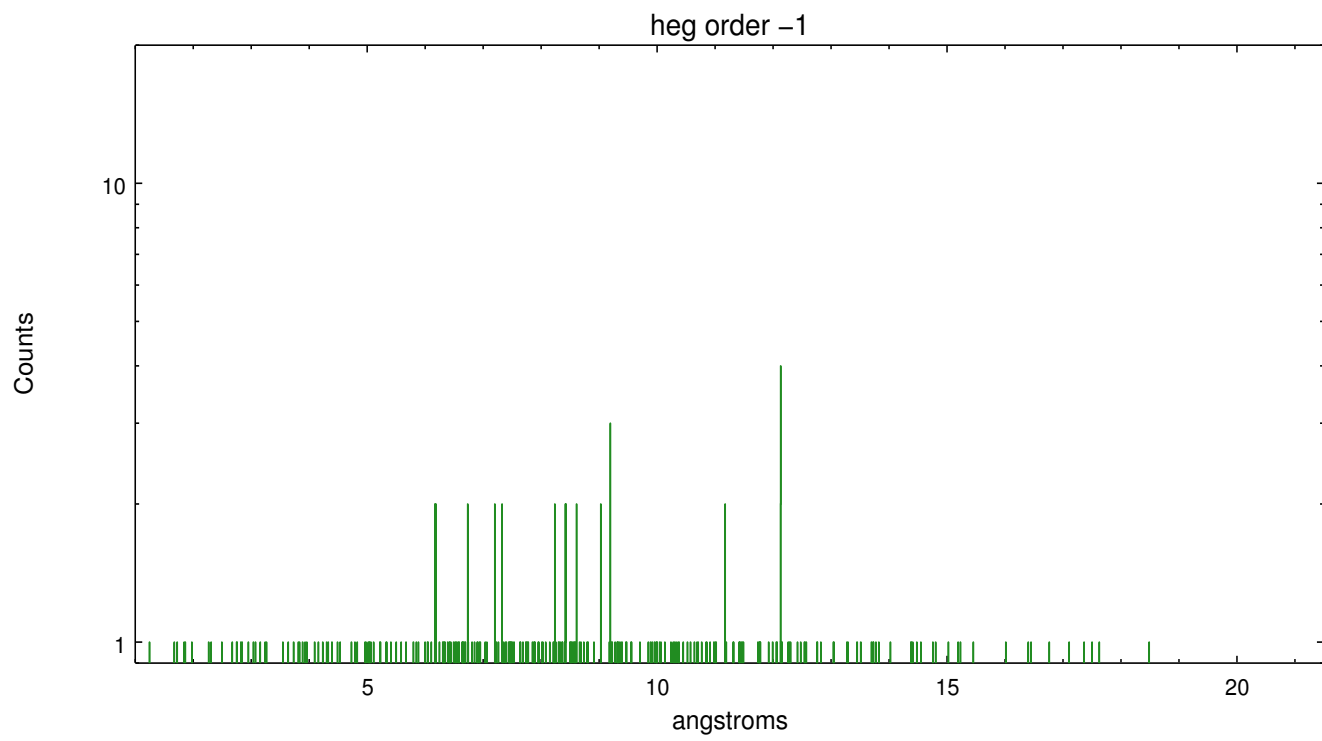
Spot Image HEG



Full Detector HEG

	order -3	order -2	order -1	order 0	order 1	order 2	order 3
Events	325	463	655	2295	470	257	280

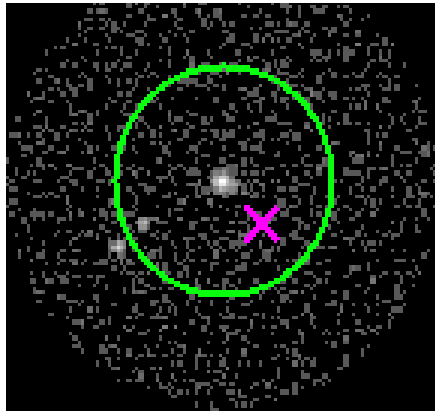




3.2 MEG Arm



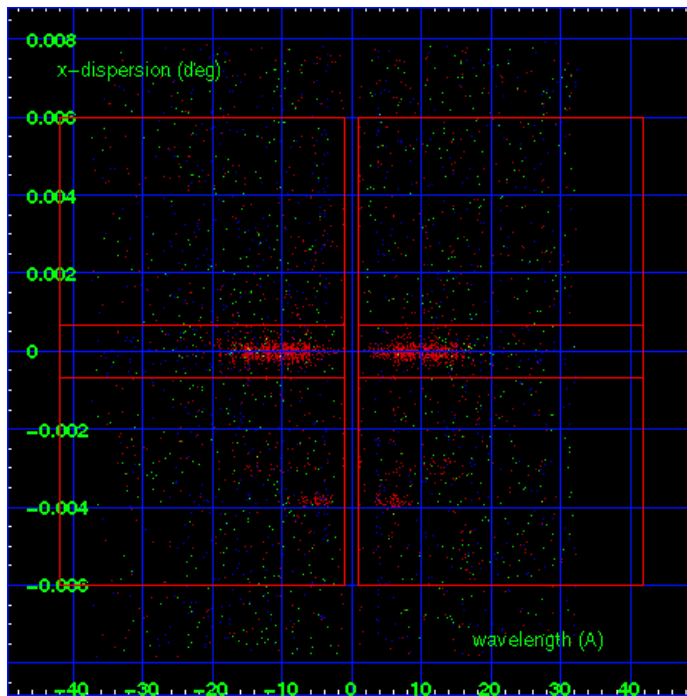
MEG Order Sort 123



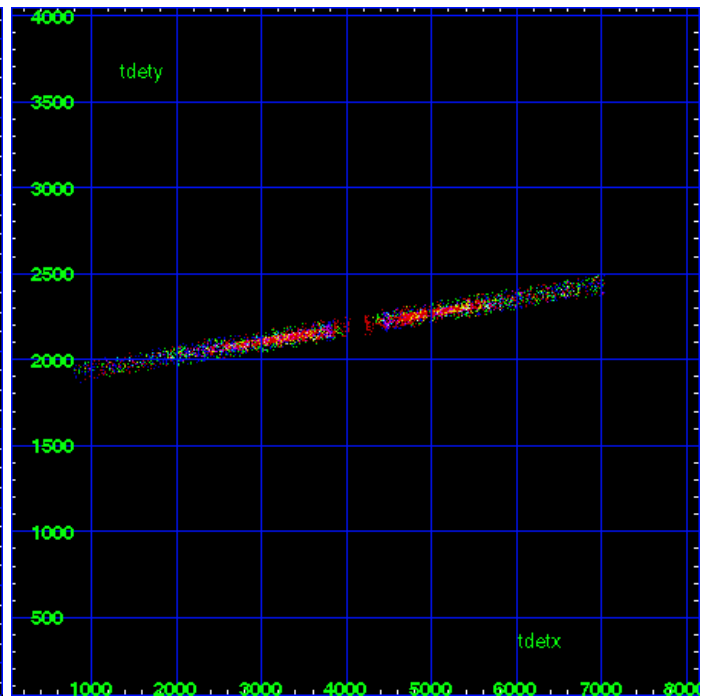
MEG Zero Order



MEG Order Sort ALL

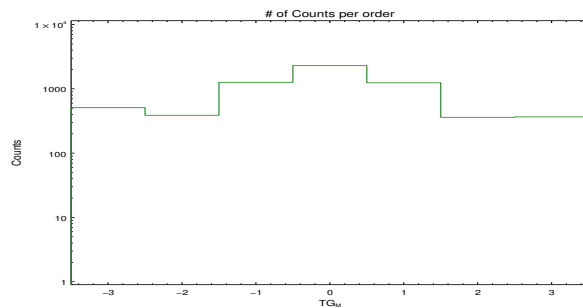


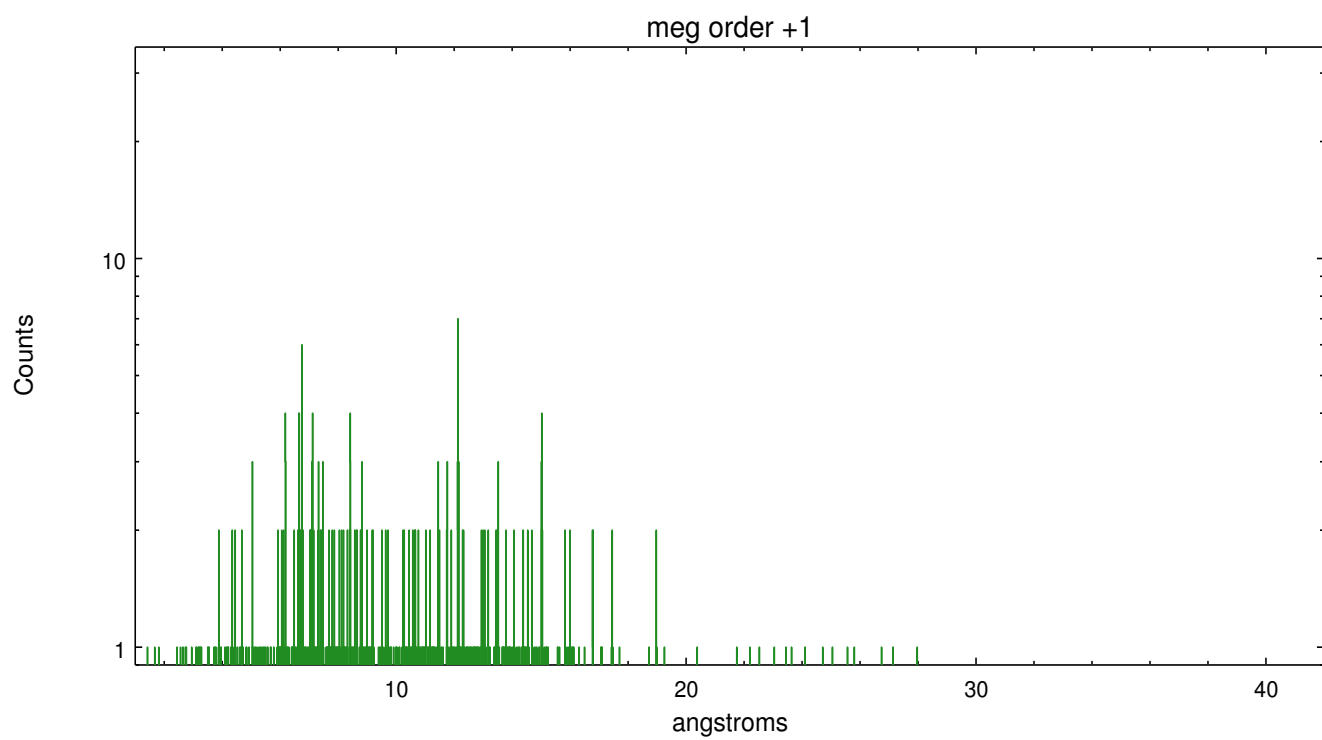
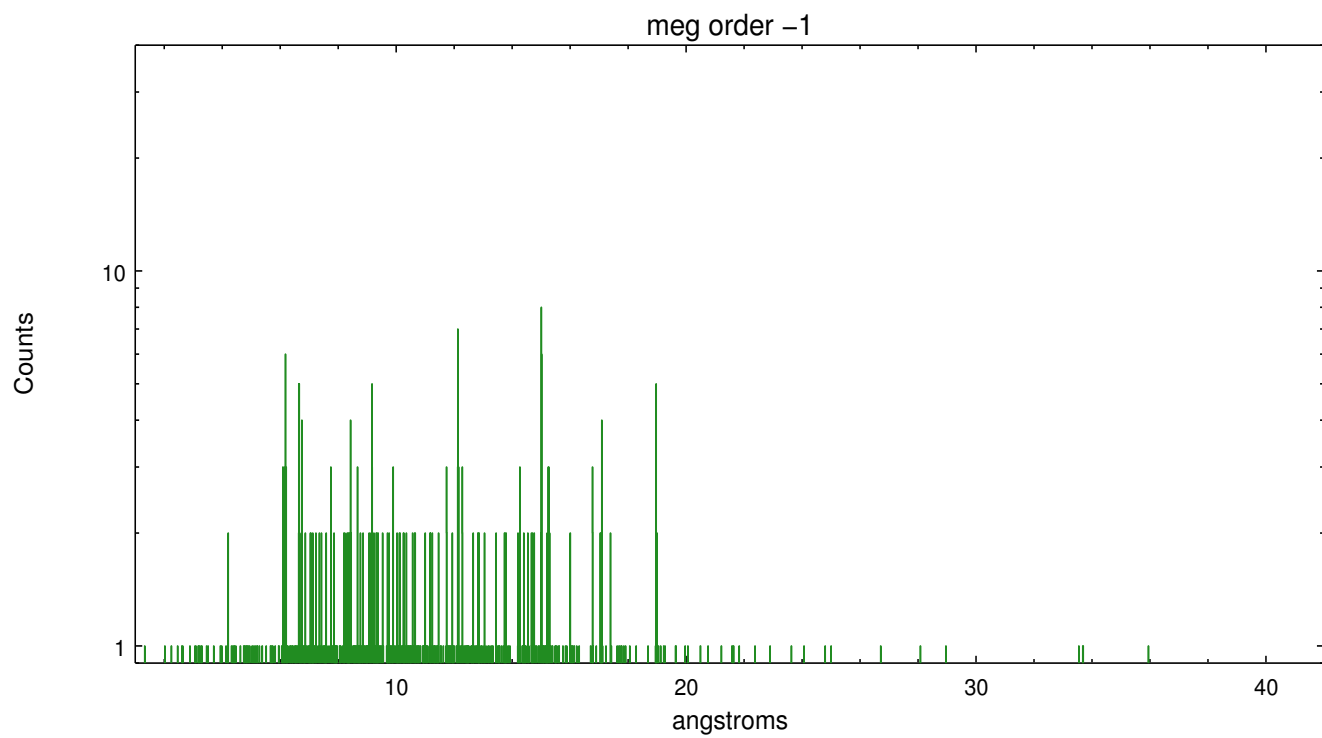
Spot Image MEG



Full Detector MEG

	order -3	order -2	order -1	order 0	order 1	order 2	order 3
Events	509	388	1262	2295	1241	361	366





A Summary

A.1 Status

V&V Scientist	Joy Nichols
V&V Date (YYYY-MM-DD)	2012.04.05
V&V Edition	1
V&V Disposition and Status	OK
V&V Charge Time	46.1951998

A.2 Comments

Roll preference to offset sources A and E in the cross-dispersion direction of MEG was achieved. Only need to avoid dispersion alignment on MEG; HEG separated in pha. Used default extraction region width of $6.6\text{e-}4$ deg for avoidance range at 7.5 arcsec separation (HETG plate scale).