

V&V Reference Report

L2 ASCDS Version : 8.4.5

Observation 736 - L2 Version 4
Chandra X-Ray Center

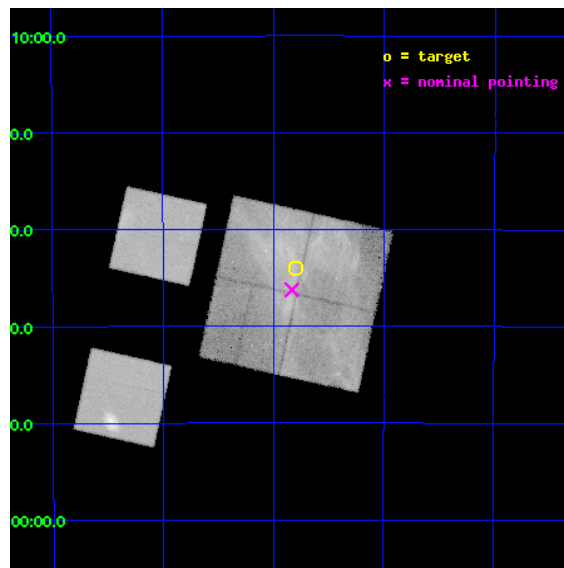
L2 Processing Date : Aug 30 2012

Contents

1	Front	2
2	OBI	3
2.1	OBI	3
2.1.1	Images	3
2.1.2	Bias	3
2.1.3	Parameters	4
2.1.4	Events	4
2.2	Compared Parameters	5
2.3	Aspect	6
2.4	Star Slots	9
2.4.1	Slot 3	9
2.4.2	Slot 4	10
2.4.3	Slot 5	11
2.4.4	Slot 6	12
2.4.5	Slot 7	13
2.5	FID Slots	14
2.5.1	Slot 0	14
2.5.2	Slot 1	15
2.5.3	Slot 2	16
A	Summary	17
A.1	Status	17
A.2	Comments	17

1 Front

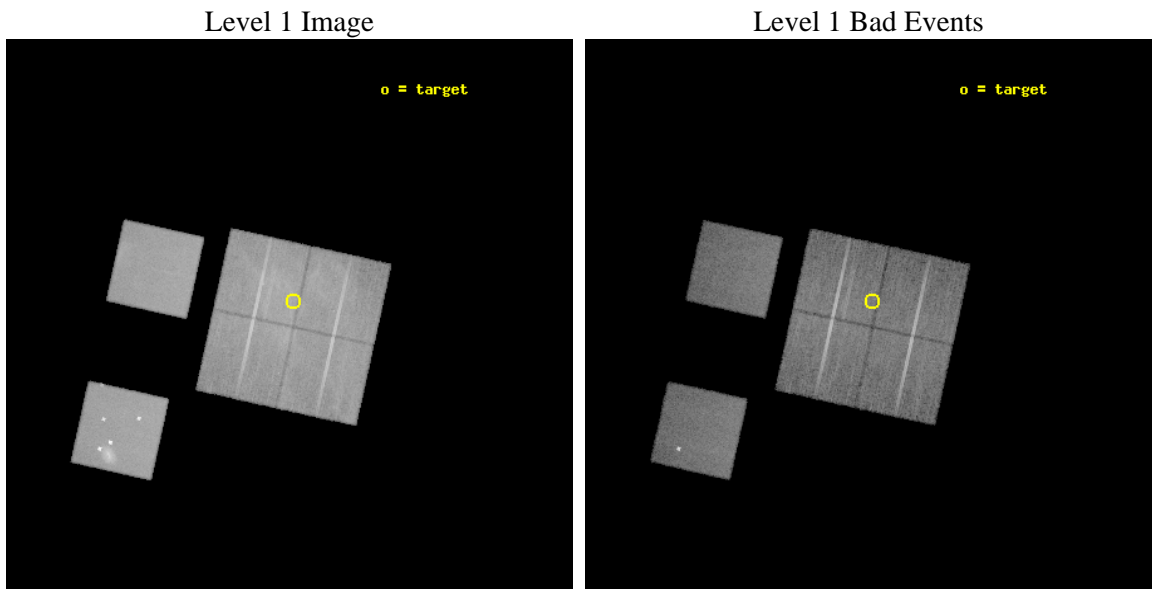
seq_num	500032	Sequence number
obs_id	736	Observation id
title	AN AXAF STUDY OF THE NONTHERMAL EMISSION IN G347.5-0.5	Proposal ti
observer	Dr. Patrick Slane	Principal investigator
object	G347.5-0.5	Source name
dtcycle	0	
cycle	P	events from which exps? Prim/Second/Both
ra_targ	257.95	Observer's specified target RA [deg]
dec_targ	-39.566667	Observer's specified target Dec [deg]
ra_nom	257.95800835079	Nominal RA [deg]
dec_nom	-39.604075049258	Nominal Dec [deg]
roll_nom	282.49669047331	Nominal Roll [deg]
revision	4	Processing version of data
ontime	30003.118117392	Sum of GTIs [s]
livetime	29623.200570081	Livetime [s]
ontime0	30009.600027934	Sum of GTIs [s]
ontime1	30006.359057695	Sum of GTIs [s]
ontime2	30009.600027934	Sum of GTIs [s]
ontime3	30003.118117392	Sum of GTIs [s]
ontime5	30009.600027934	Sum of GTIs [s]
ontime7	30009.600027934	Sum of GTIs [s]
l2events	526138	Number of level 2 events



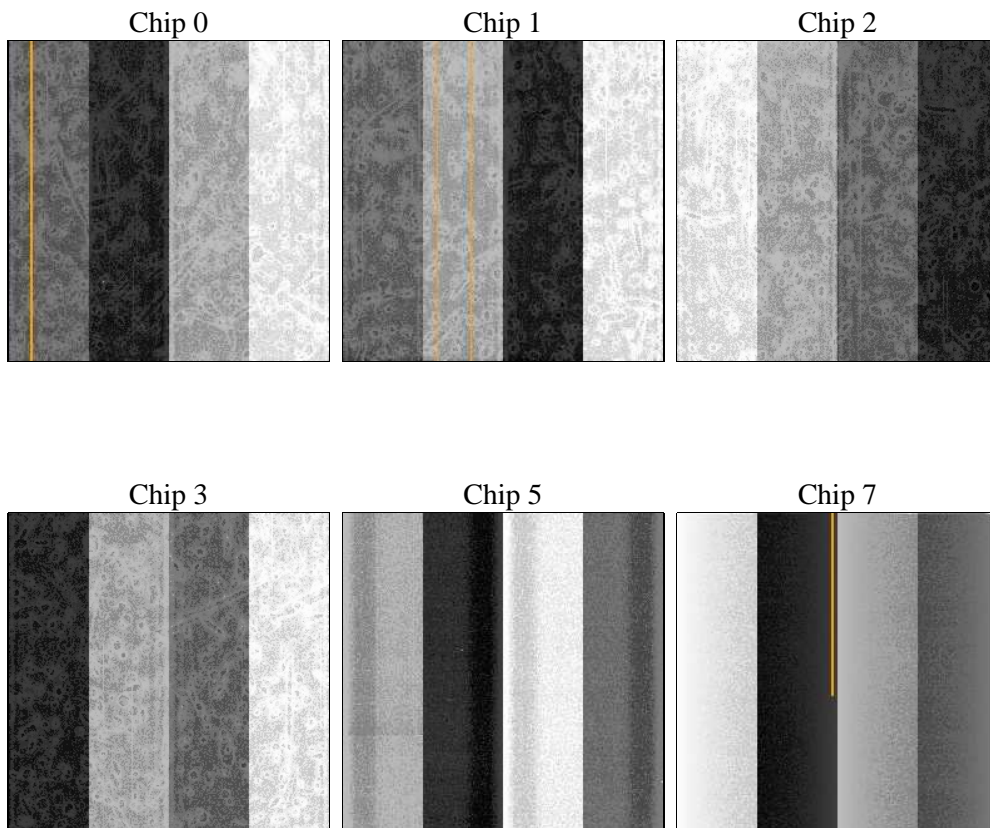
2 OBI

2.1 OBI

2.1.1 Images



2.1.2 Bias



2.1.3 Parameters

obi_num	0	Obi number	sched_exp_time	30000.000000	[s] Scheduled observation exposure time
ascdsver	8.4.5	Processing system revision	ontime	30003.118117392	Sum of GTIs [s]
caldbver	4.5.1.1	 	ontime0	30009.600027934	Sum of GTIs [s]
date	2012-08-30T18:56:39	Date and time of file creation	ontime1	30006.359057695	Sum of GTIs [s]
revision	4	Processing version of data	ontime2	30009.600027934	Sum of GTIs [s]
			ontime3	30003.118117392	Sum of GTIs [s]
			ontime5	30009.600027934	Sum of GTIs [s]
			ontime7	30009.600027934	Sum of GTIs [s]
			l1events	1398067	Number of level 1 events

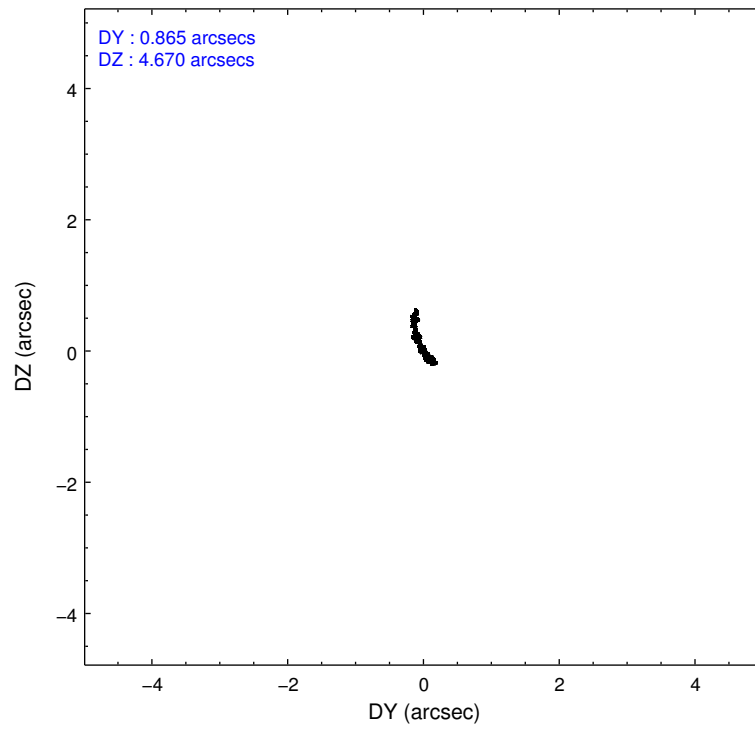
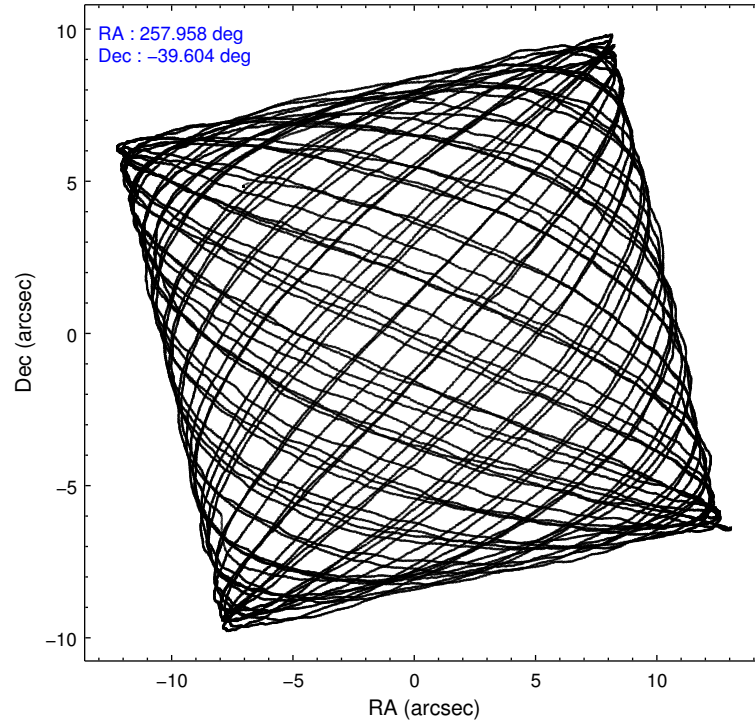
2.1.4 Events

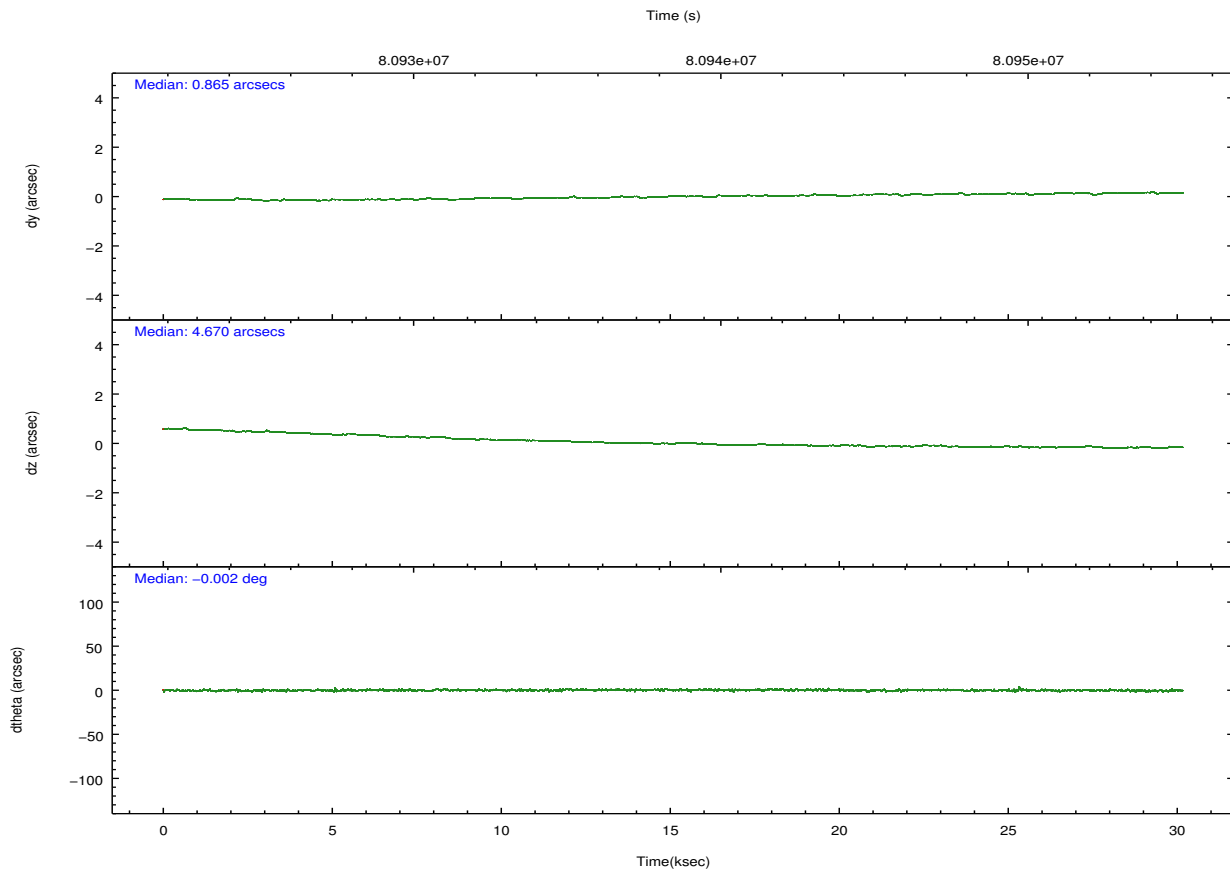
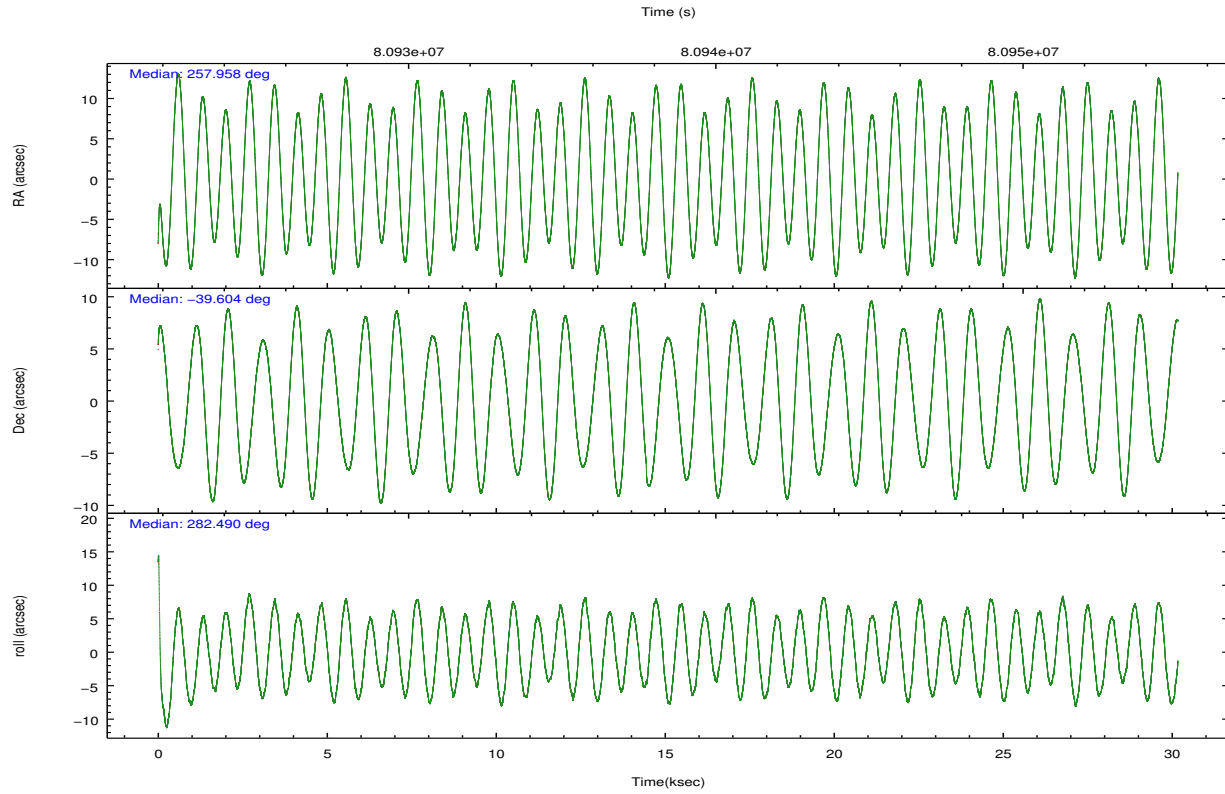
	ccd 0	ccd 1	ccd 2	ccd 3	ccd 5	ccd 7		ccd 0	ccd 1	ccd 2	ccd 3	ccd 5	ccd 7
level 1 events	212660	212523	204050	249591	275397	243846	grade 0 events	48152	53086	35905	71745	34997	18021
rejected events	142813	135877	150973	150744	125225	118939		22%	24%	17%	28%	12%	7%
rejected %	67%	63%	73%	60%	45%	48%	grade 1 events	226	248	179	327	288	189
								0%	0%	0%	0%	0%	0%
							grade 2 events	9619	10048	7572	12346	40818	27369
								4%	4%	3%	4%	14%	11%
							grade 3 events	3611	4146	2812	4639	8268	12250
								1%	1%	1%	1%	3%	5%
							grade 4 events	3451	3977	2856	4515	7607	12480
								1%	1%	1%	1%	2%	5%
							grade 5 events	5982	6281	5497	6396	19155	20219
								2%	2%	2%	2%	6%	8%
							grade 6 events	5023	5393	3937	5610	58499	54802
								2%	2%	1%	2%	21%	22%
							grade 7 events	136596	129344	145292	144013	105765	98516
								64%	60%	71%	57%	38%	40%

2.2 Compared Parameters

Parameter	Planned	Actual	Parameter	Planned	Actual
Instrument	ACIS	ACIS	Obspar format version number	7	7
Detector	ACIS-012357	ACIS-012357	Obspar file type	PREDICTED	ACTUAL
Grating	NONE	NONE	Obspar update status	NONE	UPDATED
Data mode	FAINT	FAINT	Number of optional ACIS chips dropped	0	0
Observation mode	POINTING	POINTING	On-chip summing requested	N	N
[deg] Pointing RA	257.934006	257.9580083507875	Subarray requested	NONE	NONE
[deg] Pointing Dec	-39.583680	-39.60407504925803	Alternating exposures requested	N	N
[deg] Pointing Roll	282.272699	282.4966904733055	[s] Primary exposure time	0.000000	3.2
[mm] SIM focus pos	-0.782348	-0.7809083437167272			
[mm] SIM defocus	0	0.001439871863259334			
[mm] SIM translation stage pos	-233.592463	-233.5874344608287			
[mm] SIM translation stage offset	0	-0.005018542100998502			
[s] Observation start time (MET)	80923528.184000	80922540.18085501			
Observation start date	2000-07-25T14:44:24	2000-07-25T14:29:00			
[s] Observation end time (MET)	80953528.184000	80953662.25701199			
Observation end date	2000-07-25T23:04:24	2000-07-25T23:07:42			
Read mode	TIMED	TIMED			

2.3 Aspect





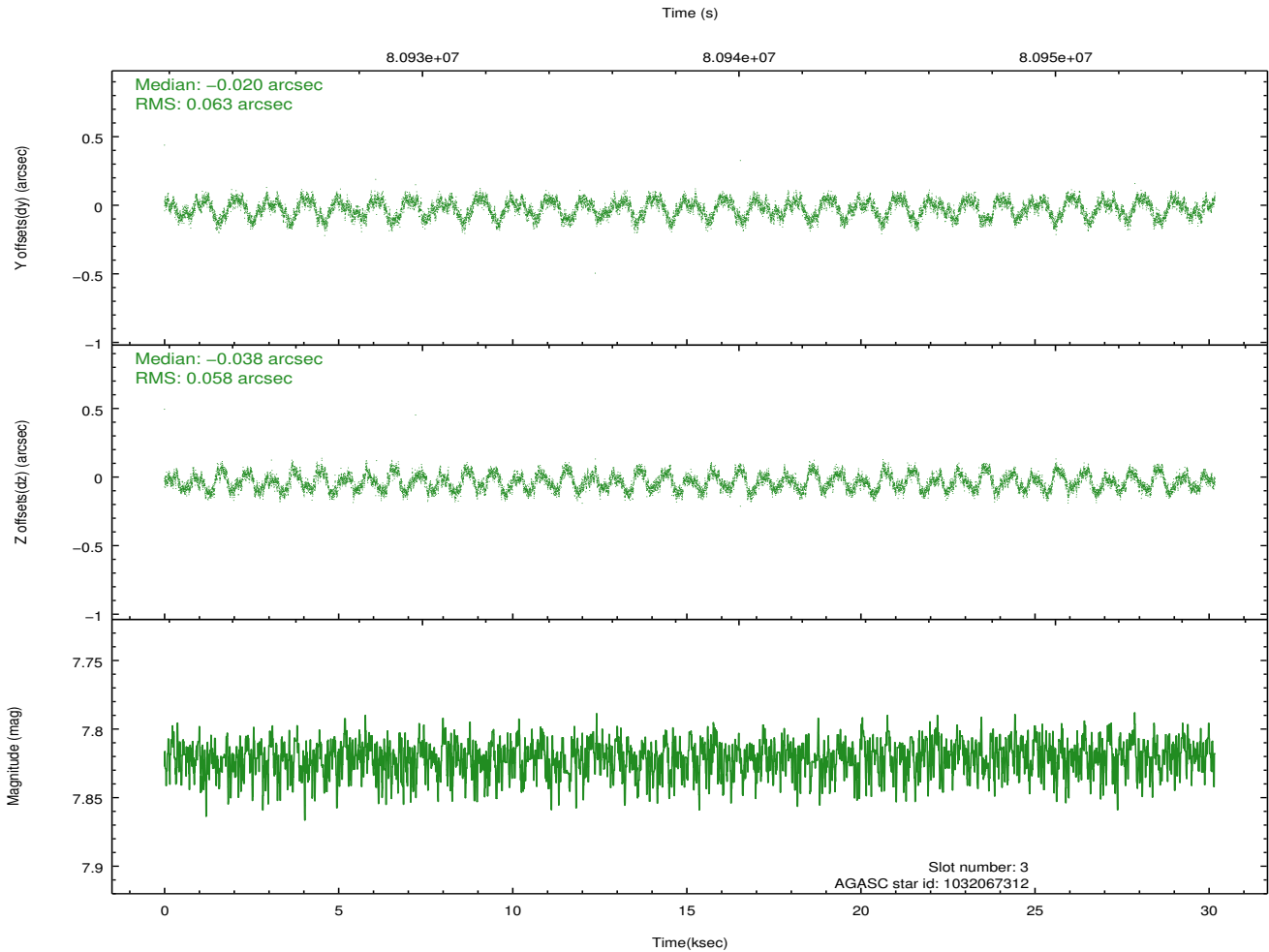
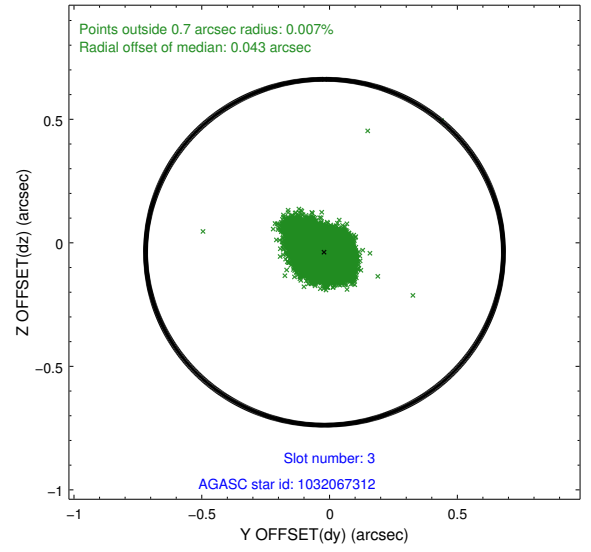
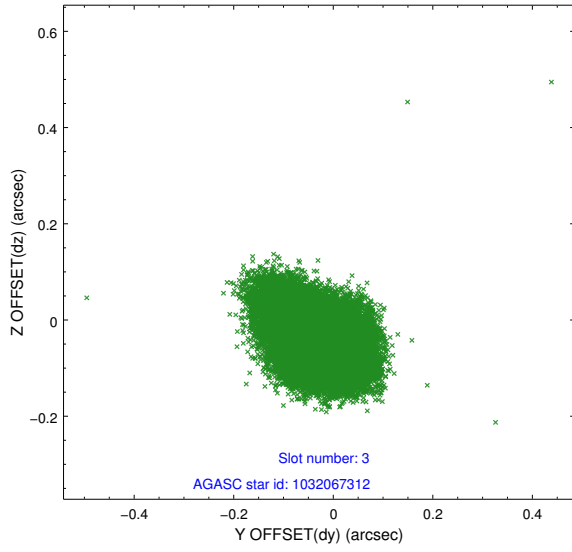
Slot Statistics

slot	status	id	mag	n_pts	med_dy	med_dz	dr1	dr2	ra	dec	mean_y	mean_z
0	FID	ACIS-I-2	7.15	7359	-0.029	-0.024	0.009	0.016	0.000000	0.000000	-755.21	-834.47
1	FID	ACIS-I-4	7.19	7358	-0.036	0.032	0.008	0.014	0.000000	0.000000	2158.81	1071.73
2	FID	ACIS-I-5	7.23	7360	-0.036	0.061	0.010	0.016	0.000000	0.000000	-1808.95	1069.68
3	GUIDE	1032067312	7.82	14717	-0.020	-0.038	0.092	0.142	258.048957	-39.760316	688.73	176.71
4	GUIDE	1031405768	7.88	14716	-0.060	-0.091	0.059	0.098	257.178877	-39.338023	-1302.68	-1867.56
5	GUIDE	1031932624	8.33	14714	0.147	-0.006	0.080	0.127	257.431727	-40.221910	1955.36	-1837.28
6	GUIDE	1031932008	8.82	14713	-0.051	0.018	0.081	0.132	257.163205	-39.994917	1003.68	-2392.86
7	GUIDE	1031546704	9.16	14713	-0.009	0.118	0.096	0.155	258.328569	-39.071177	-1566.61	1470.08

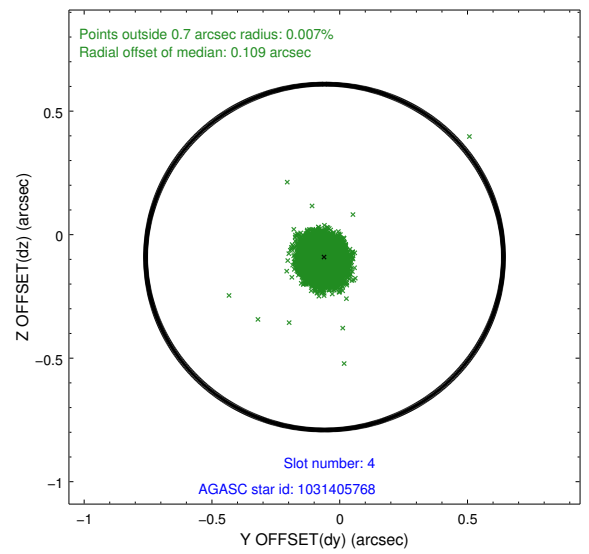
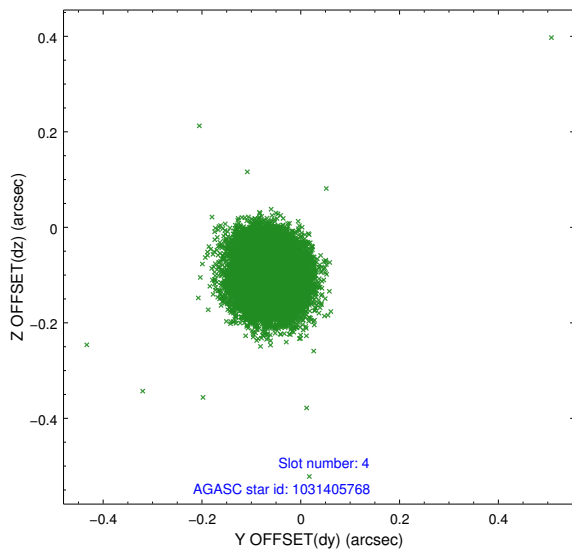
∞

2.4 Star Slots

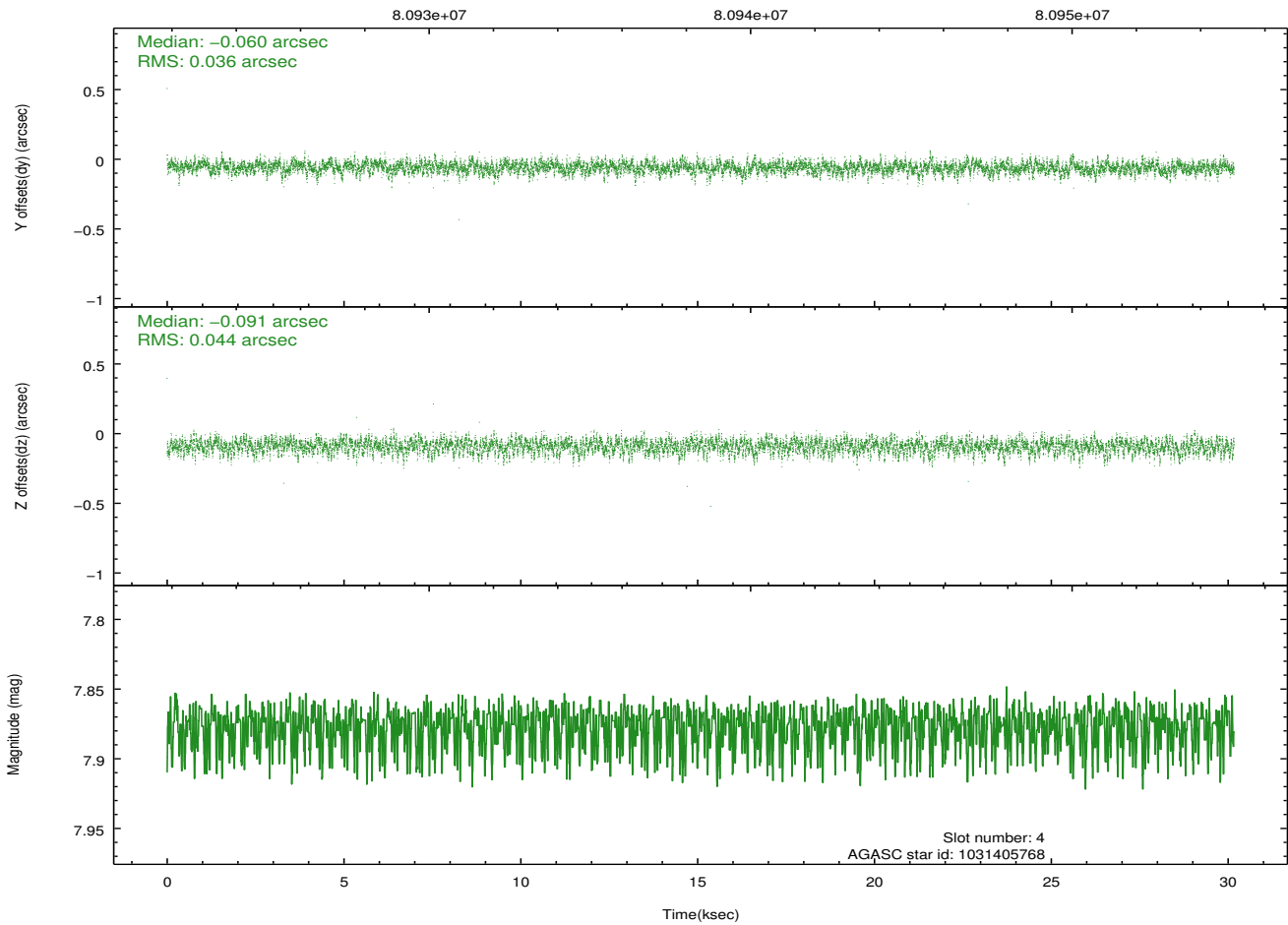
2.4.1 Slot 3



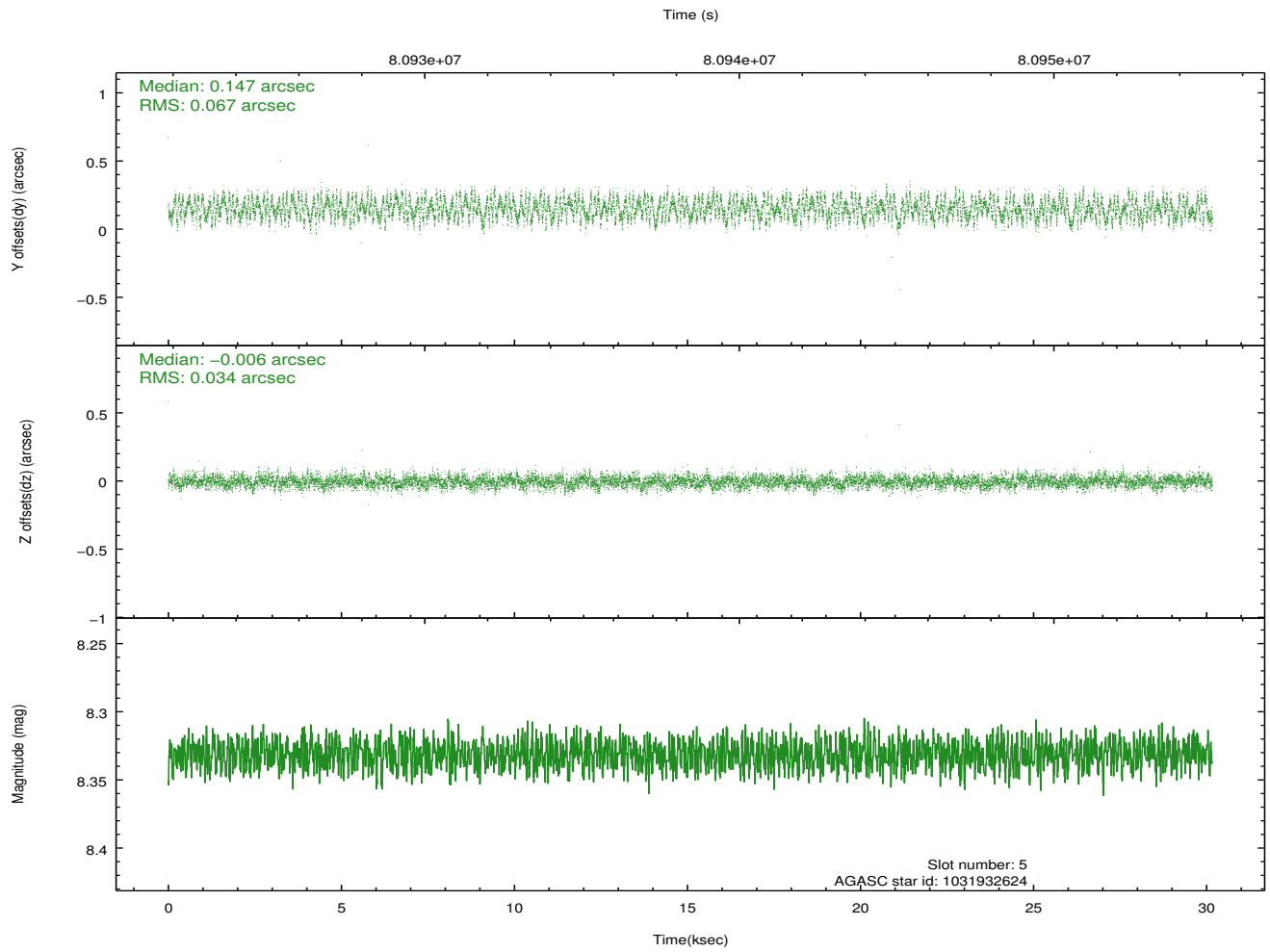
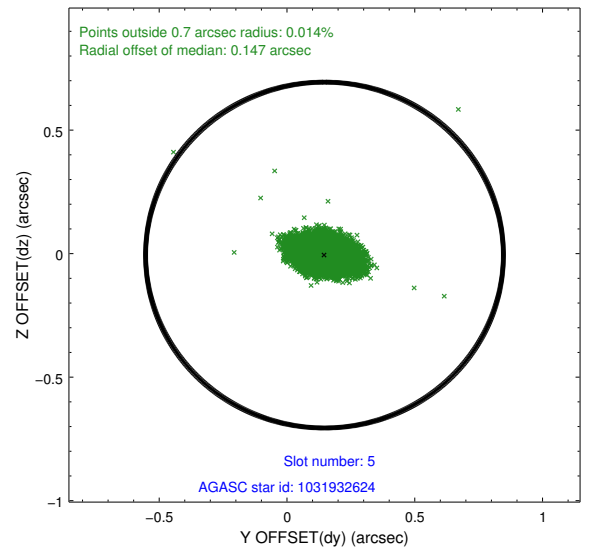
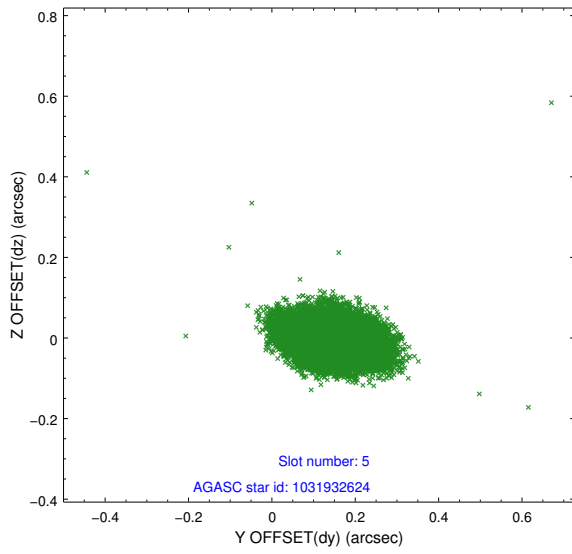
2.4.2 Slot 4



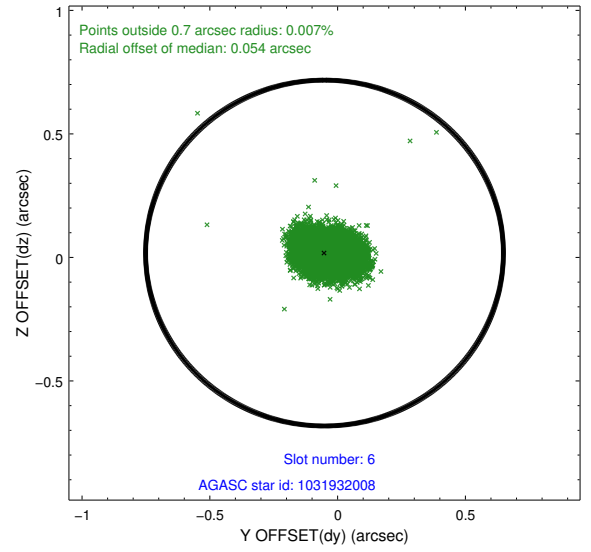
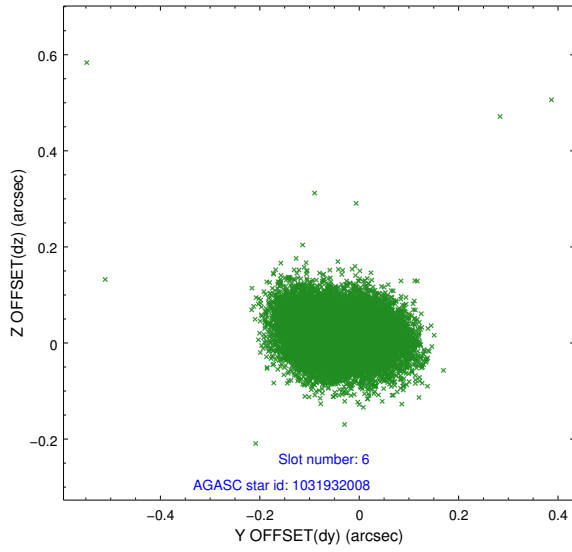
Time (s)



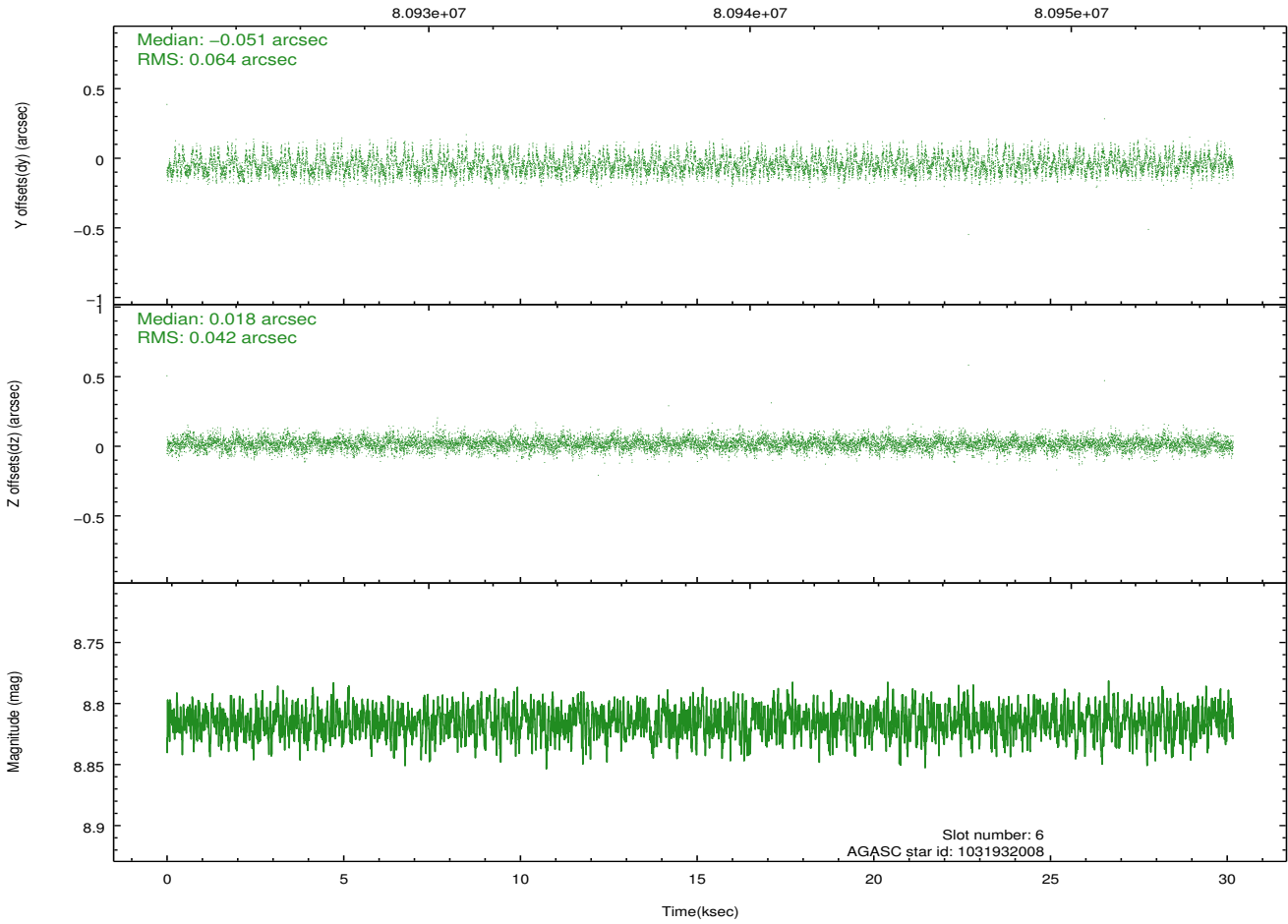
2.4.3 Slot 5



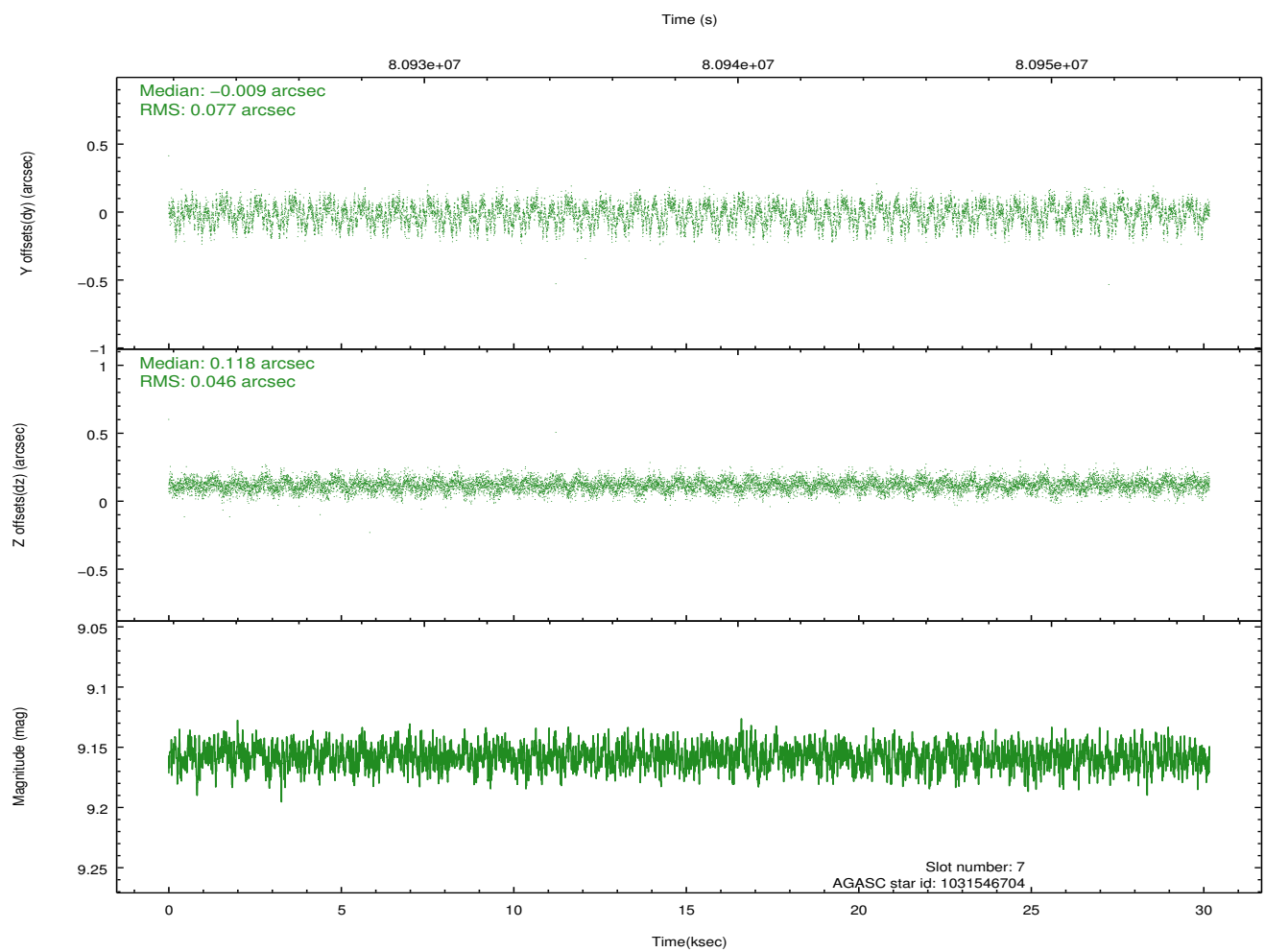
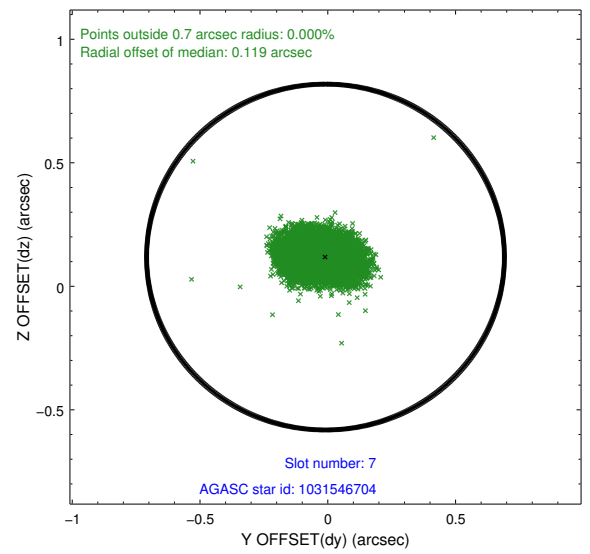
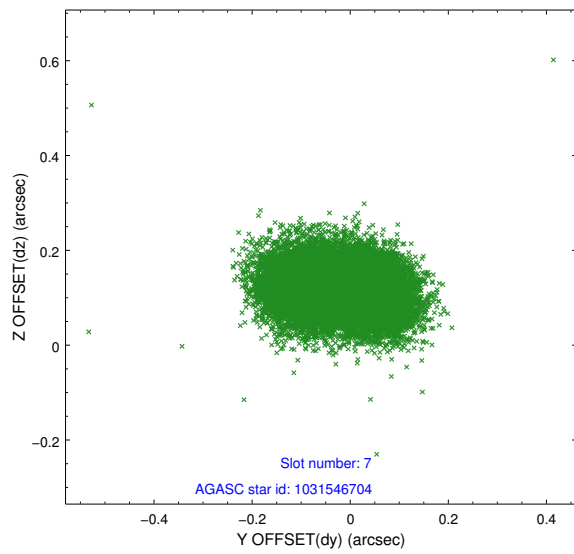
2.4.4 Slot 6



Time (s)

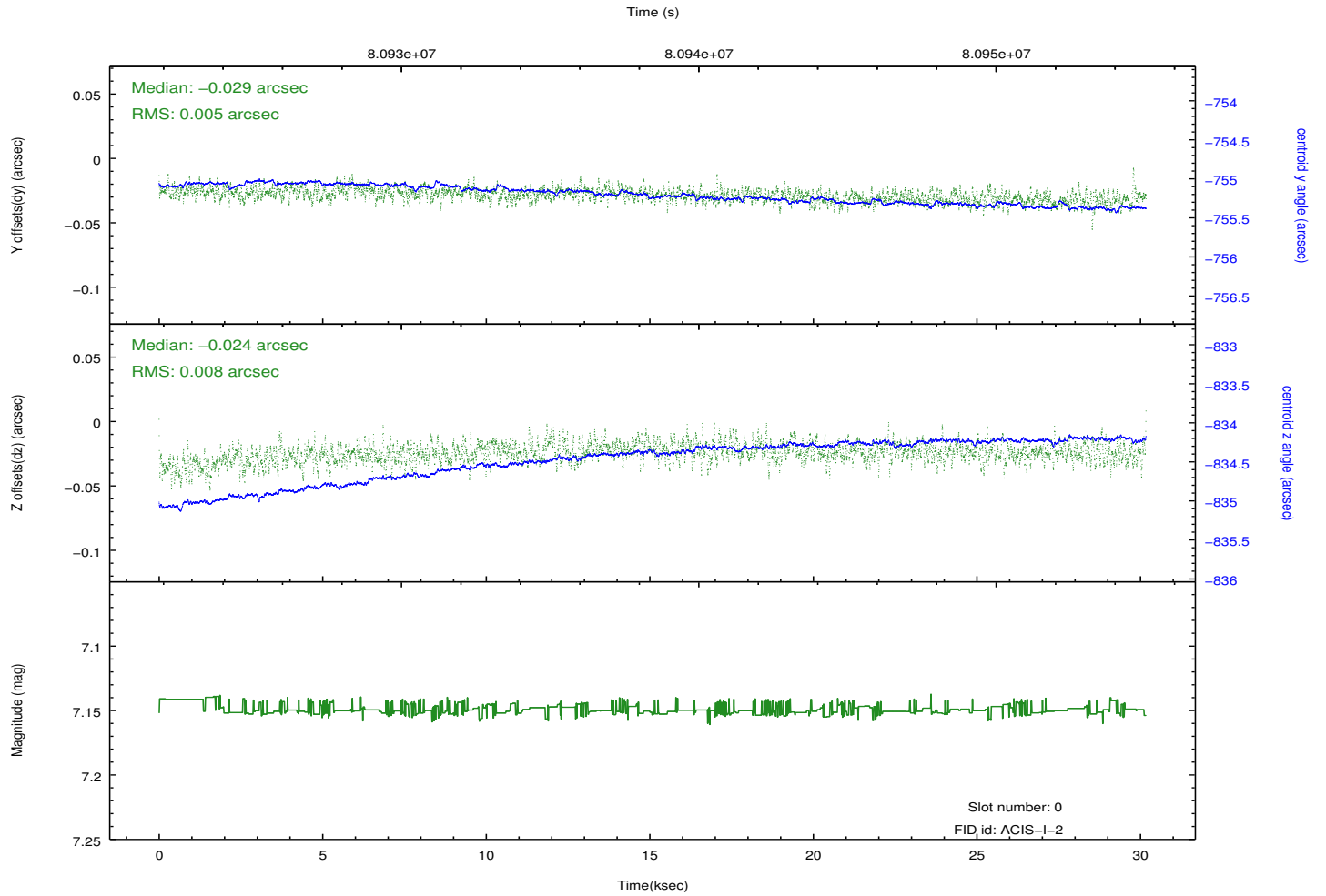
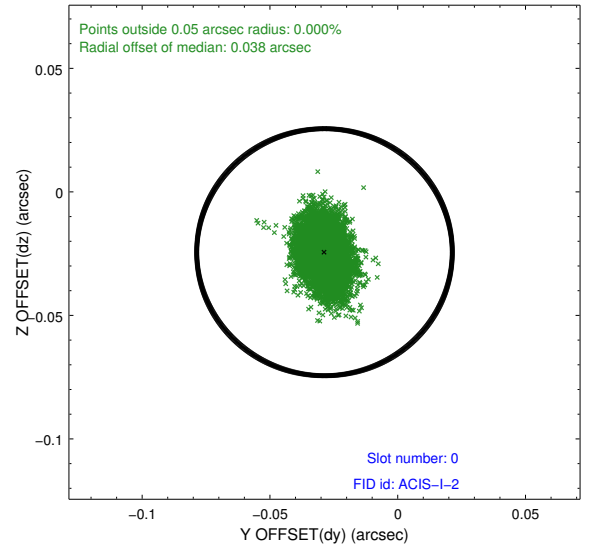
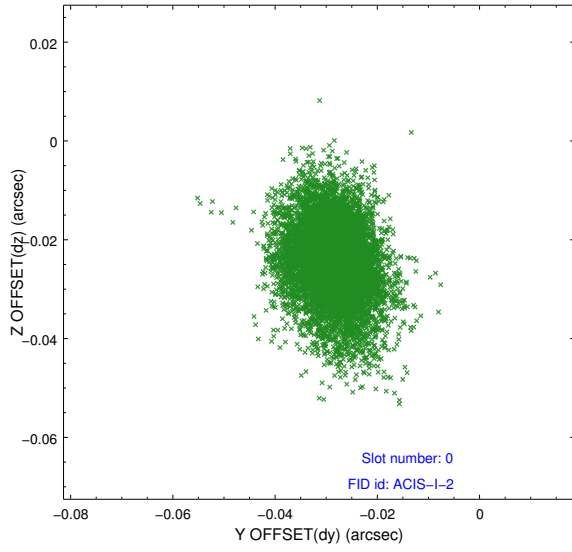


2.4.5 Slot 7

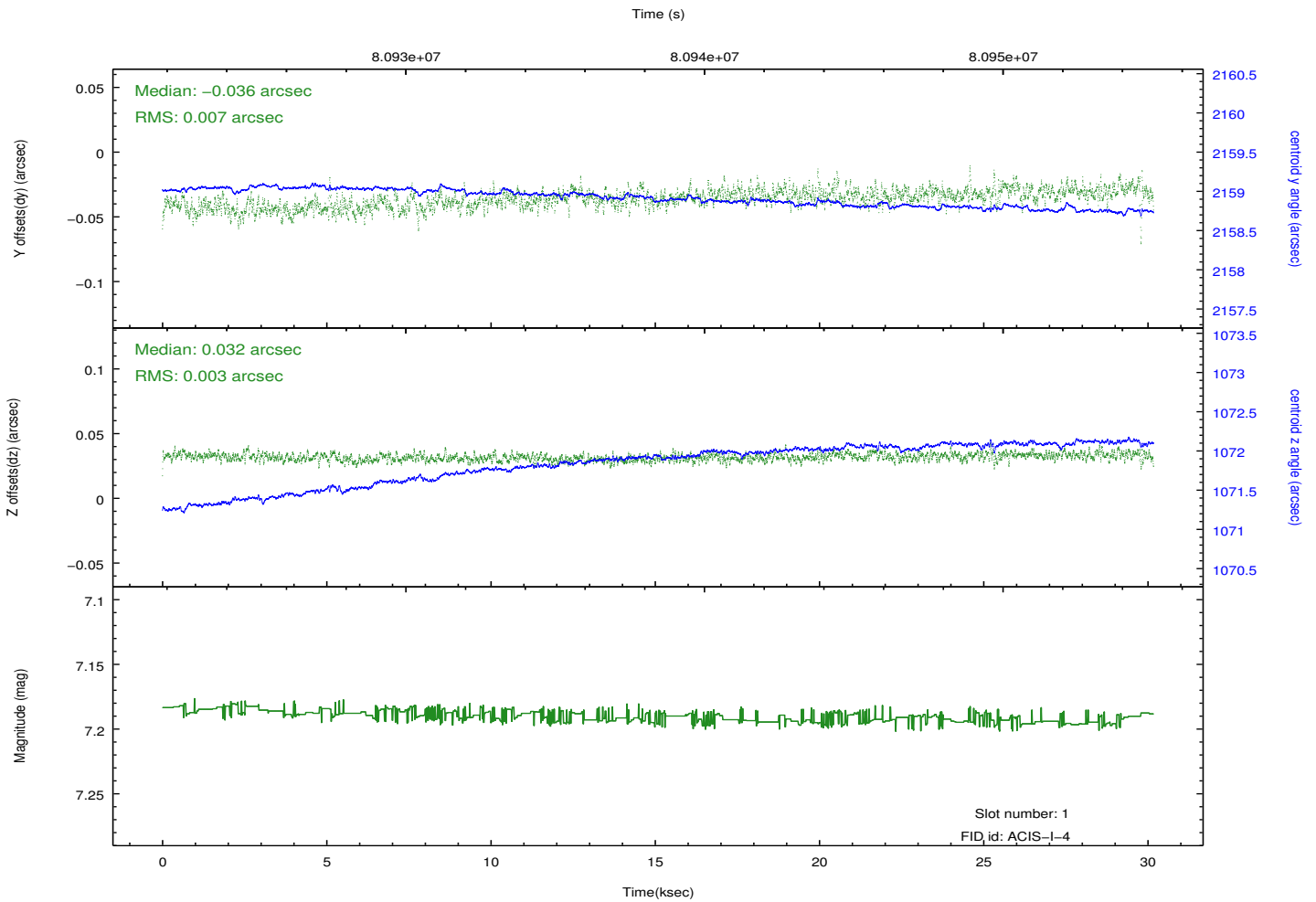
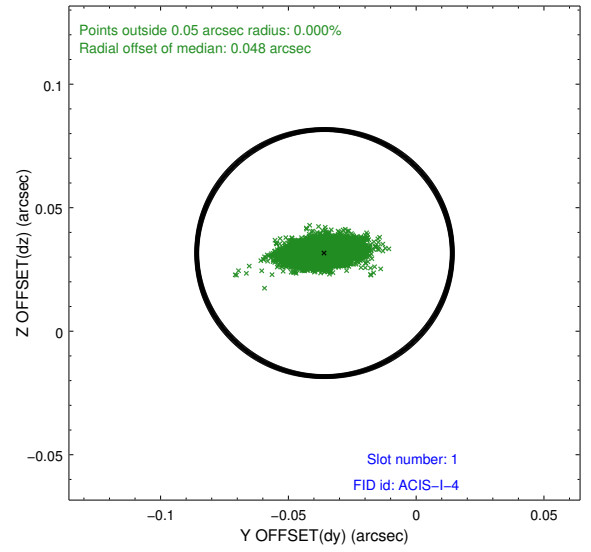
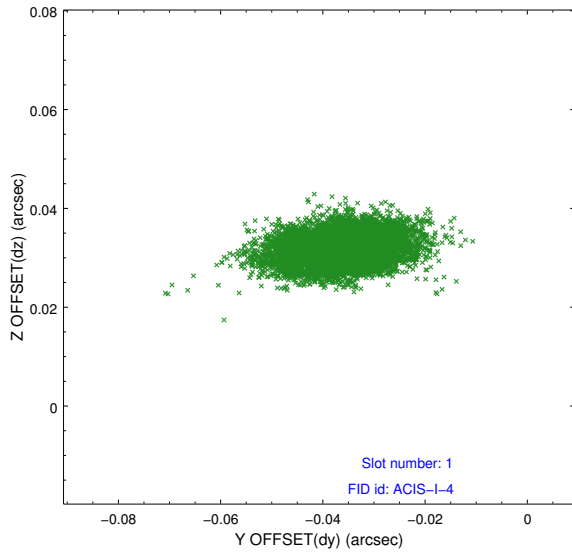


2.5 FID Slots

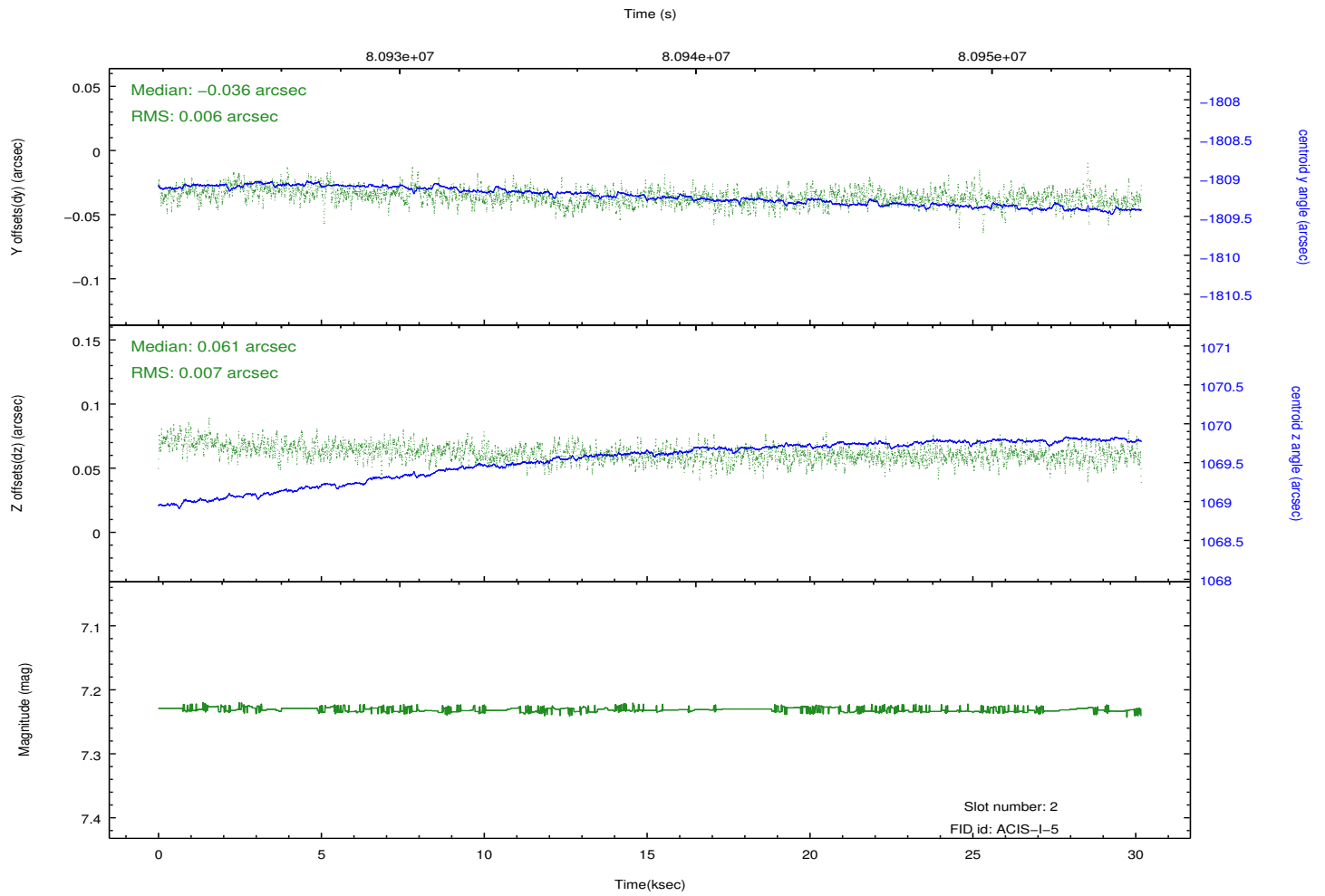
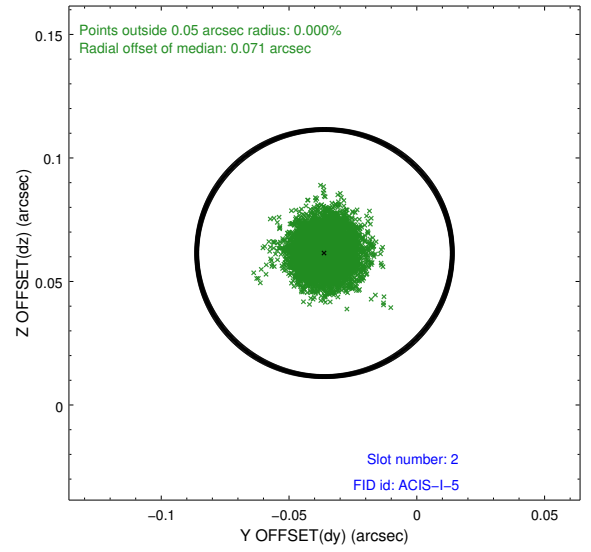
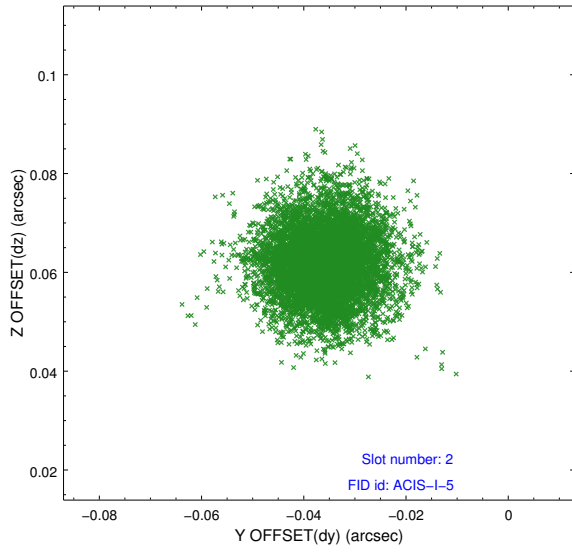
2.5.1 Slot 0



2.5.2 Slot 1



2.5.3 Slot 2



A Summary

A.1 Status

V&V Scientist	Jen Lauer
V&V Date (YYYY-MM-DD)	2012.09.05
V&V Edition	1
V&V Disposition and Status	OK
V&V Charge Time	30.009

A.2 Comments