

V&V Reference Report

L2 ASCDS Version : 8.4.4

Observation 7936 - L2 Version 2
Chandra X-Ray Center

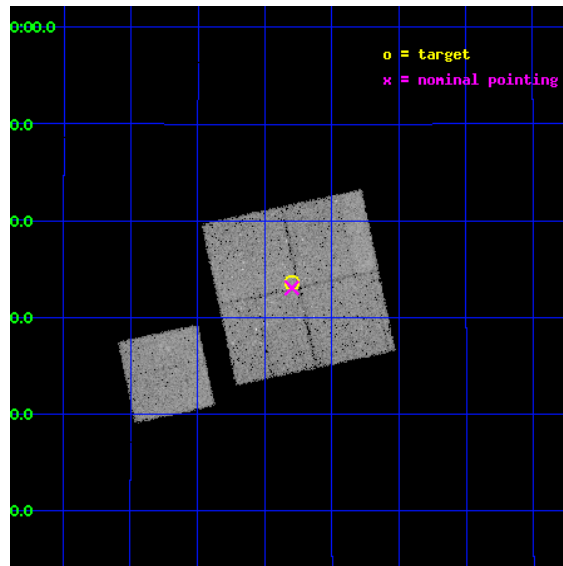
L2 Processing Date : Apr 25 2012

Contents

1	Front	2
2	OBI	3
2.1	OBI	3
2.1.1	Images	3
2.1.2	Bias	3
2.1.3	Parameters	4
2.1.4	Events	4
2.2	Compared Parameters	5
2.3	Aspect	6
2.4	Star Slots	9
2.4.1	Slot 3	9
2.4.2	Slot 4	10
2.4.3	Slot 5	11
2.4.4	Slot 6	12
2.4.5	Slot 7	13
2.5	FID Slots	14
2.5.1	Slot 0	14
2.5.2	Slot 1	15
2.5.3	Slot 2	16
A	Summary	17
A.1	Status	17
A.2	Comments	17

1 Front

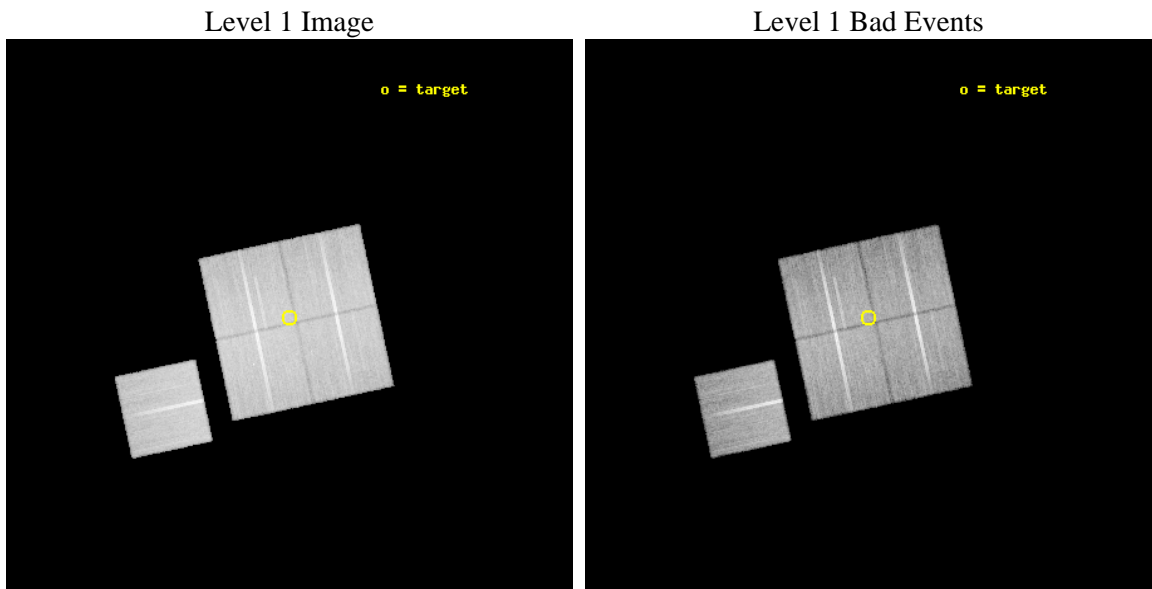
seq_num	800654	Sequence number
obs_id	7936	Observation id
title	A Complete Baryon Census in a Nearby Galaxy Group	Proposal title
observer	Dr. John Mulchaey	Principal investigator
object	NGC2563-P13	Source name
dtycycle	0	
cycle	P	events from which exps? Prim/Second/Both
ra_targ	124.82375	Observer's specified target RA [deg]
dec_targ	20.559361	Observer's specified target Dec [deg]
ra_nom	124.82454507309	Nominal RA [deg]
dec_nom	20.551329288128	Nominal Dec [deg]
roll_nom	257.88330419079	Nominal Roll [deg]
revision	2	Processing version of data
ontime	28045.650242805	Sum of GTIs [s]
livetime	27679.213175476	Livetime [s]
ontime0	28039.245202184	Sum of GTIs [s]
ontime1	28042.427202404	Sum of GTIs [s]
ontime2	28042.468242526	Sum of GTIs [s]
ontime3	28045.650242805	Sum of GTIs [s]
ontime6	28045.486082792	Sum of GTIs [s]
l2events	94325	Number of level 2 events



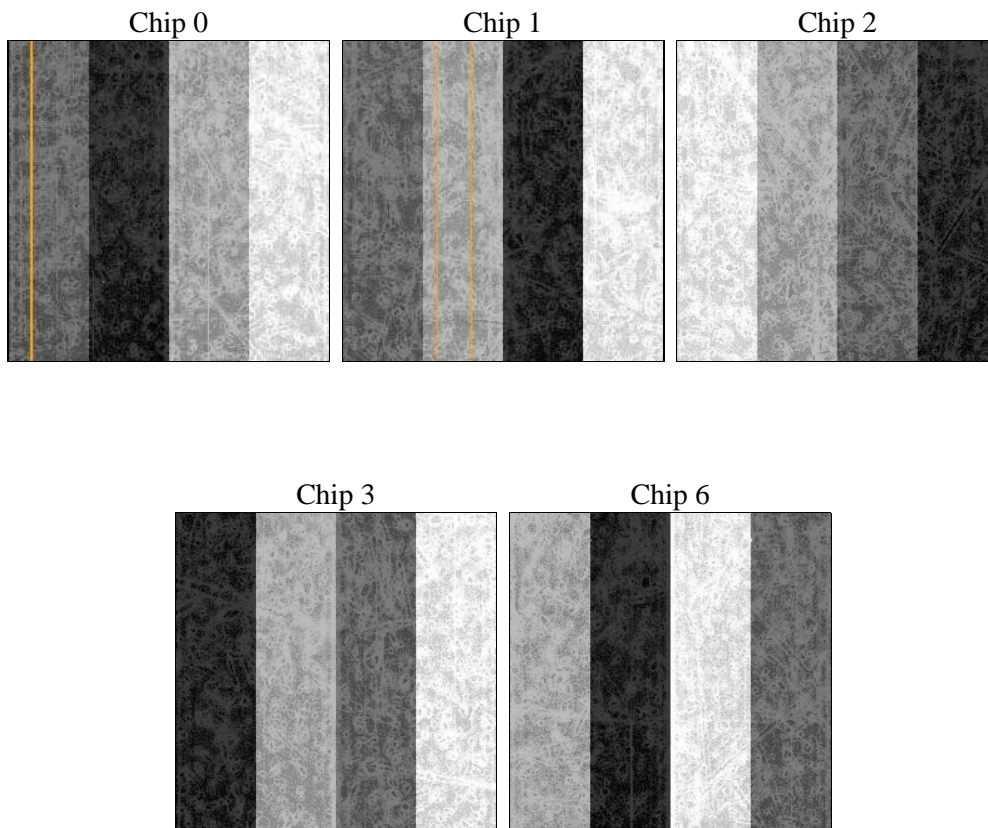
2 OBI

2.1 OBI

2.1.1 Images



2.1.2 Bias



2.1.3 Parameters

obi_num	0	Obi number	sched_exp_time	28000.000000	[s] Scheduled observation exposure time
ascdsver	8.4.4	Processing system revision	ontime	28045.650242805	Sum of GTIs [s]
caldsver	4.4.9	 	ontime0	28039.245202184	Sum of GTIs [s]
date	2012-04-25T21:05:04	Date and time of file creation	ontime1	28042.427202404	Sum of GTIs [s]
revision	2	Processing version of data	ontime2	28042.468242526	Sum of GTIs [s]
			ontime3	28045.650242805	Sum of GTIs [s]
			ontime6	28045.486082792	Sum of GTIs [s]
			l1events	1107563	Number of level 1 events

2.1.4 Events

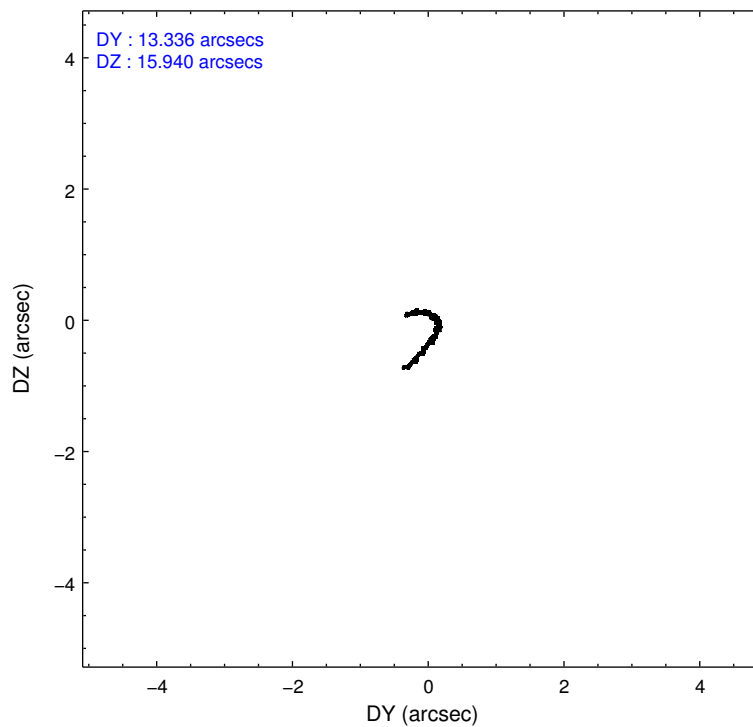
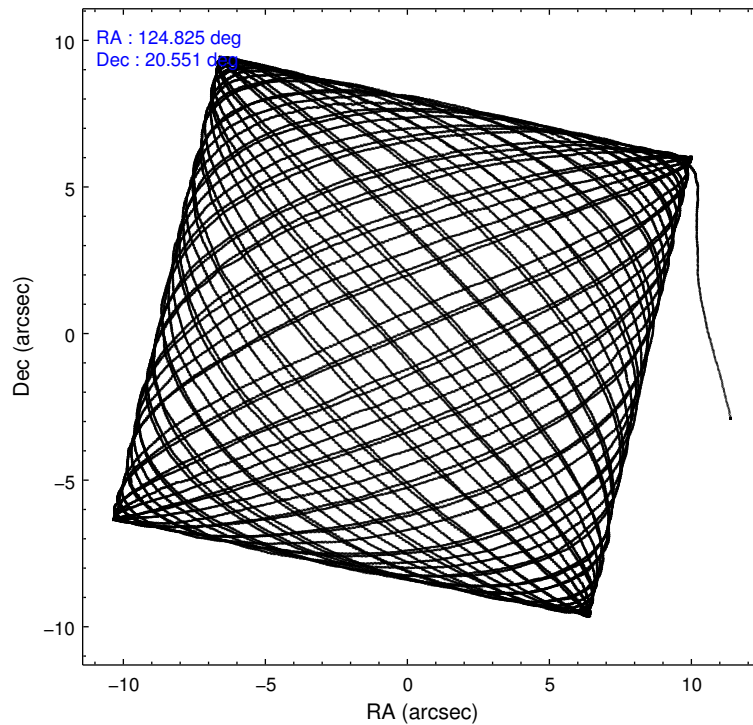
	ccd 0	ccd 1	ccd 2	ccd 3	ccd 6
level 1 events	214855	207274	237518	222101	225815
rejected events	192745	182171	214873	200836	203000
rejected %	89%	87%	90%	90%	89%

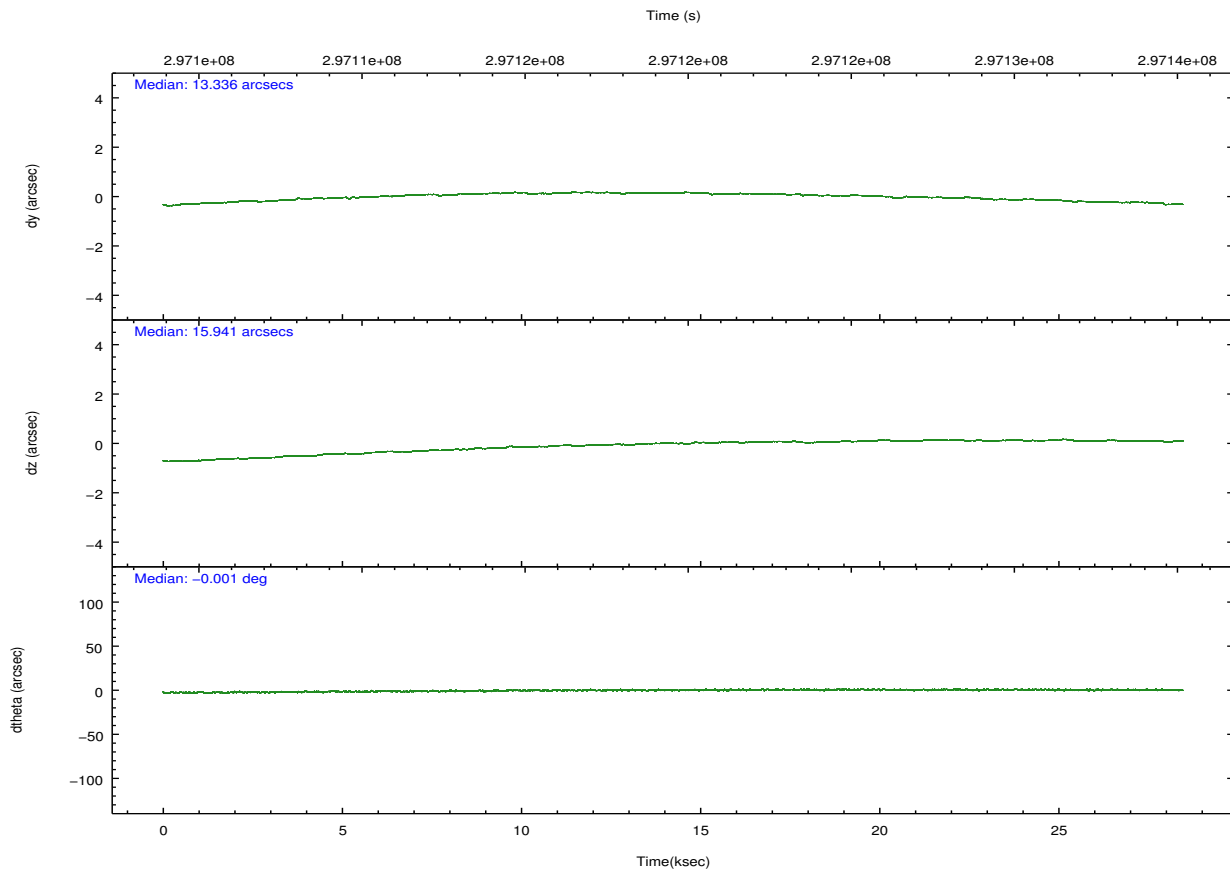
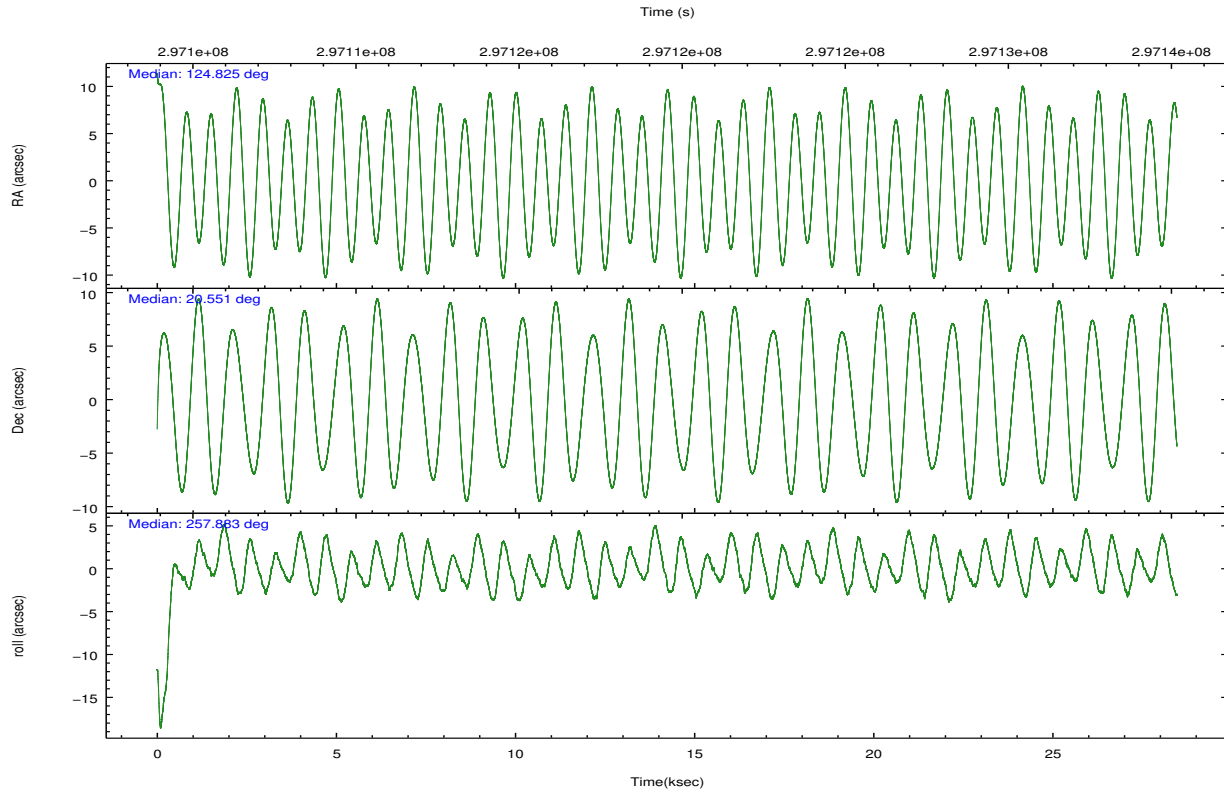
	ccd 0	ccd 1	ccd 2	ccd 3	ccd 6
grade 0 events	7546	9068	8326	7542	7845
	3%	4%	3%	3%	3%
grade 1 events	119	106	130	131	114
	0%	0%	0%	0%	0%
grade 2 events	5462	5511	5313	4733	4976
	2%	2%	2%	2%	2%
grade 3 events	2449	2795	2381	2385	2531
	1%	1%	1%	1%	1%
grade 4 events	2369	2721	2434	2361	2457
	1%	1%	1%	1%	1%
grade 5 events	7717	8403	7397	8979	8694
	3%	4%	3%	4%	3%
grade 6 events	4284	5011	4193	4248	5011
	1%	2%	1%	1%	2%
grade 7 events	184909	173659	207344	191722	194187
	86%	83%	87%	86%	85%

2.2 Compared Parameters

Parameter	Planned	Actual	Parameter	Planned	Actual
Instrument	ACIS	ACIS	Obspar format version number	7	7
Detector	ACIS-01236	ACIS-01236	Obspar file type	PREDICTED	ACTUAL
Grating	NONE	NONE	Obspar update status	NONE	UPDATED
Data mode	VFAINT	VFAINT	CCD I0 on	Y	Y
Observation mode	POINTING	POINTING	CCD I1 on	Y	Y
[deg] Pointing RA	124.815401	124.8245450730883	CCD I2 on	Y	Y
[deg] Pointing Dec	20.577445	20.55132928812824	CCD I3 on	Y	Y
[deg] Pointing Roll	257.677824	257.8833041907866	CCD S0 on	N	N
[mm] SIM focus pos	-0.782348	-0.7809083437167272	CCD S1 on	N	N
[mm] SIM defocus	0	0.001439871863259334	CCD S2 on	O1	Y
[mm] SIM translation stage pos	-233.592463	-233.5874344608287	CCD S3 on	N	N
[mm] SIM translation stage offset	0	-0.005018542100998502	CCD S4 on	N	N
[s] Observation start time (MET)	297105773.184000	297104701.94127	CCD S5 on	N	N
Observation start date	2007-06-01T17:21:48	2007-06-01T17:05:01	Number of optional ACIS chips dropped	0	0
[s] Observation end time (MET)	297133773.184000	297134616.5677	On-chip summing requested	N	N
Observation end date	2007-06-02T01:08:28	2007-06-02T01:23:36	Subarray requested	NONE	NONE
Read mode	TIMED	TIMED	Alternating exposures requested	N	N
			[s] Primary exposure time	0.000000	3.1

2.3 Aspect



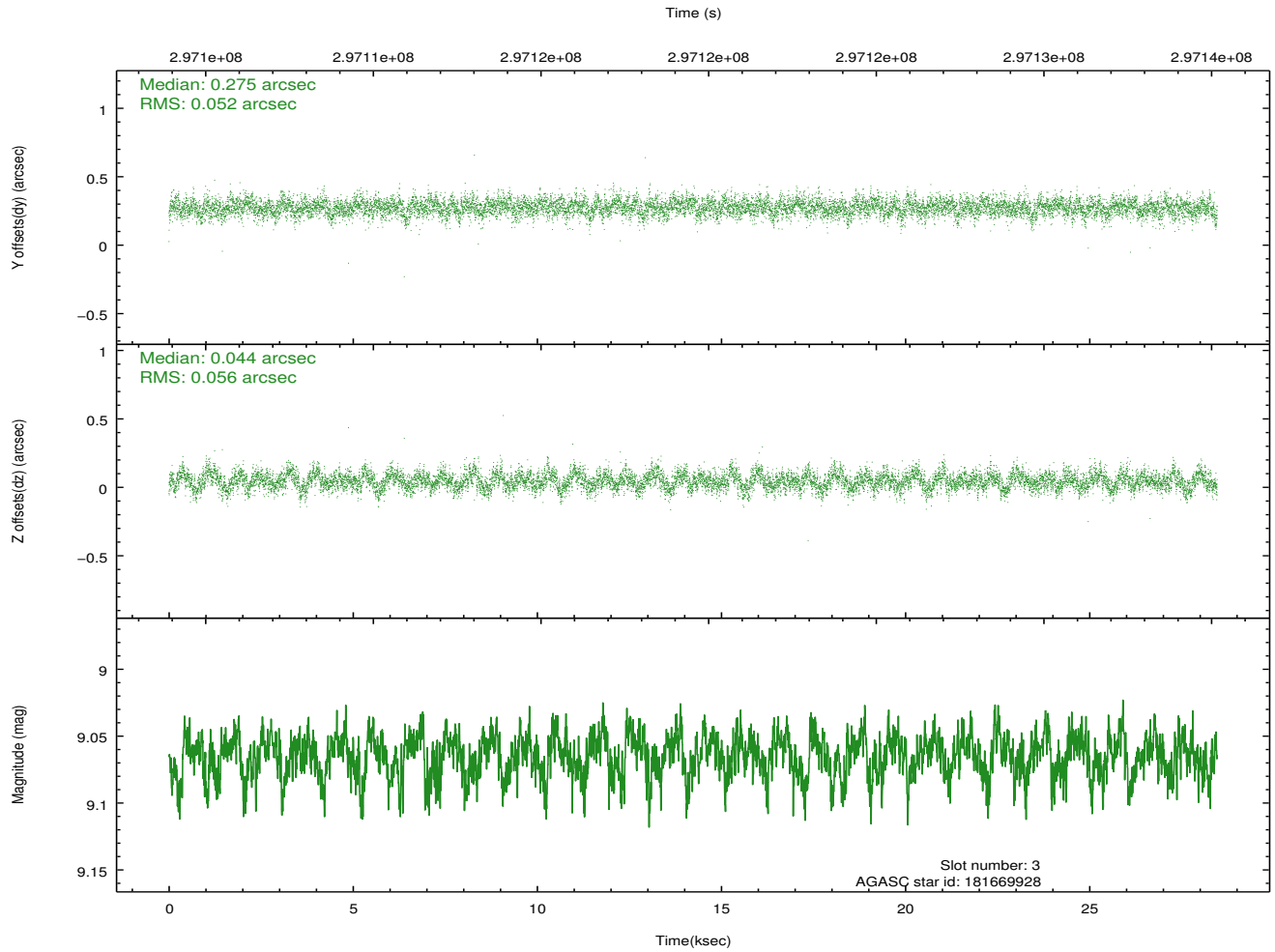
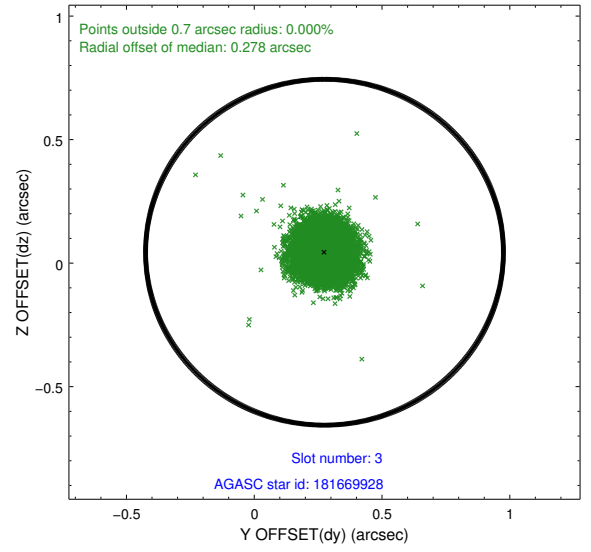
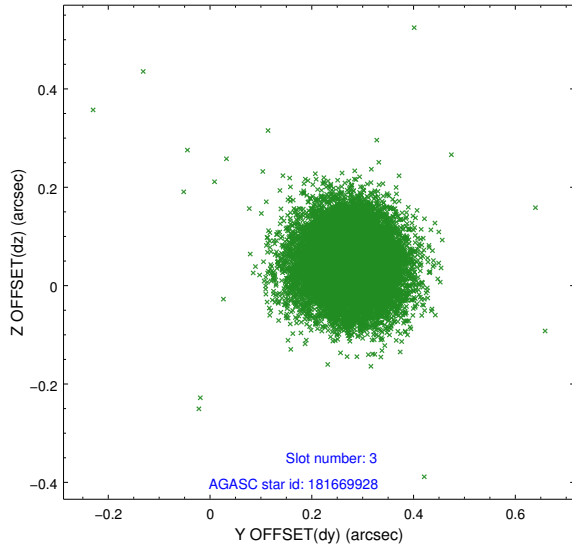


Slot Statistics

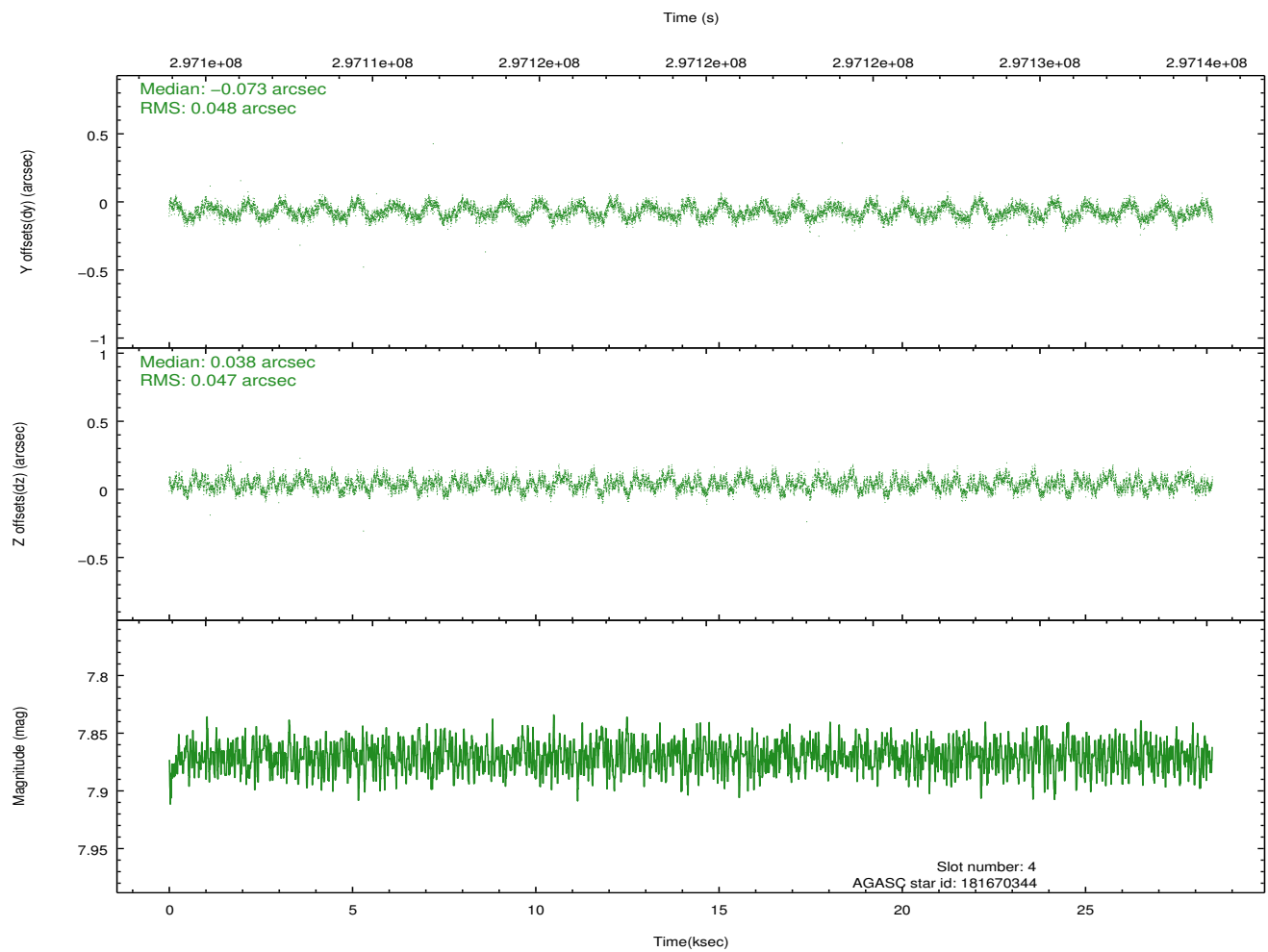
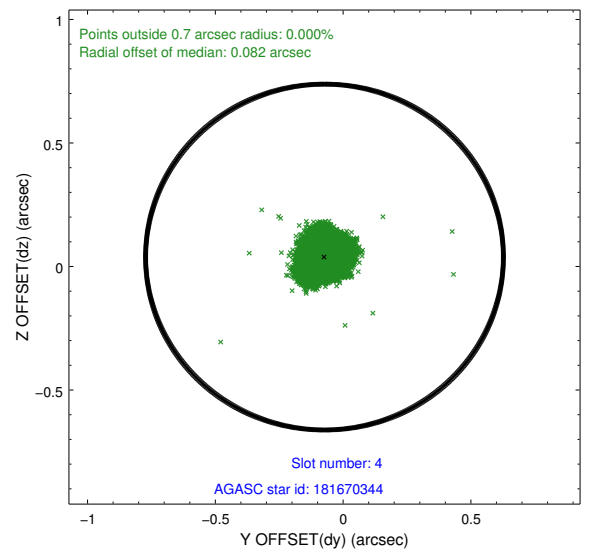
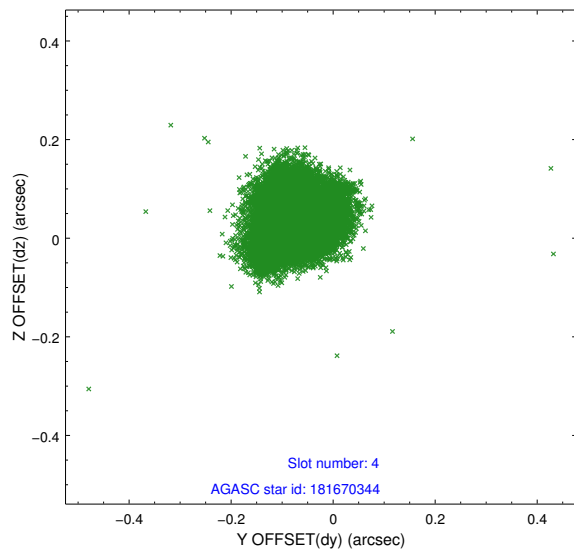
slot	status	id	mag	n_pts	med_dy	med_dz	dr1	dr2	ra	dec	mean_y	mean_z
0	FID	ACIS-I-1	7.22	6942	0.061	-0.056	0.009	0.029	0.000000	0.000000	926.24	-839.51
1	FID	ACIS-I-5	7.22	6939	-0.215	0.056	0.010	0.017	0.000000	0.000000	-1822.06	1058.09
2	FID	ACIS-I-6	7.23	6942	0.064	0.070	0.011	0.017	0.000000	0.000000	391.74	1702.67
3	GUIDE	181669928	9.06	13877	0.275	0.044	0.080	0.131	124.750322	19.975998	2163.09	247.15
4	GUIDE	181670344	7.87	13886	-0.073	0.038	0.073	0.109	124.942618	20.336943	754.54	604.49
5	GUIDE	182193072	8.13	13880	-0.084	0.010	0.063	0.098	124.468170	21.177590	-1862.83	-1599.91
6	GUIDE	182195136	8.56	13877	-0.072	-0.055	0.087	0.140	124.931899	20.918080	-1281.53	121.04
7	GUIDE	182192304	9.11	13868	-0.047	-0.040	0.110	0.173	124.313502	21.181082	-1765.65	-2110.35

2.4 Star Slots

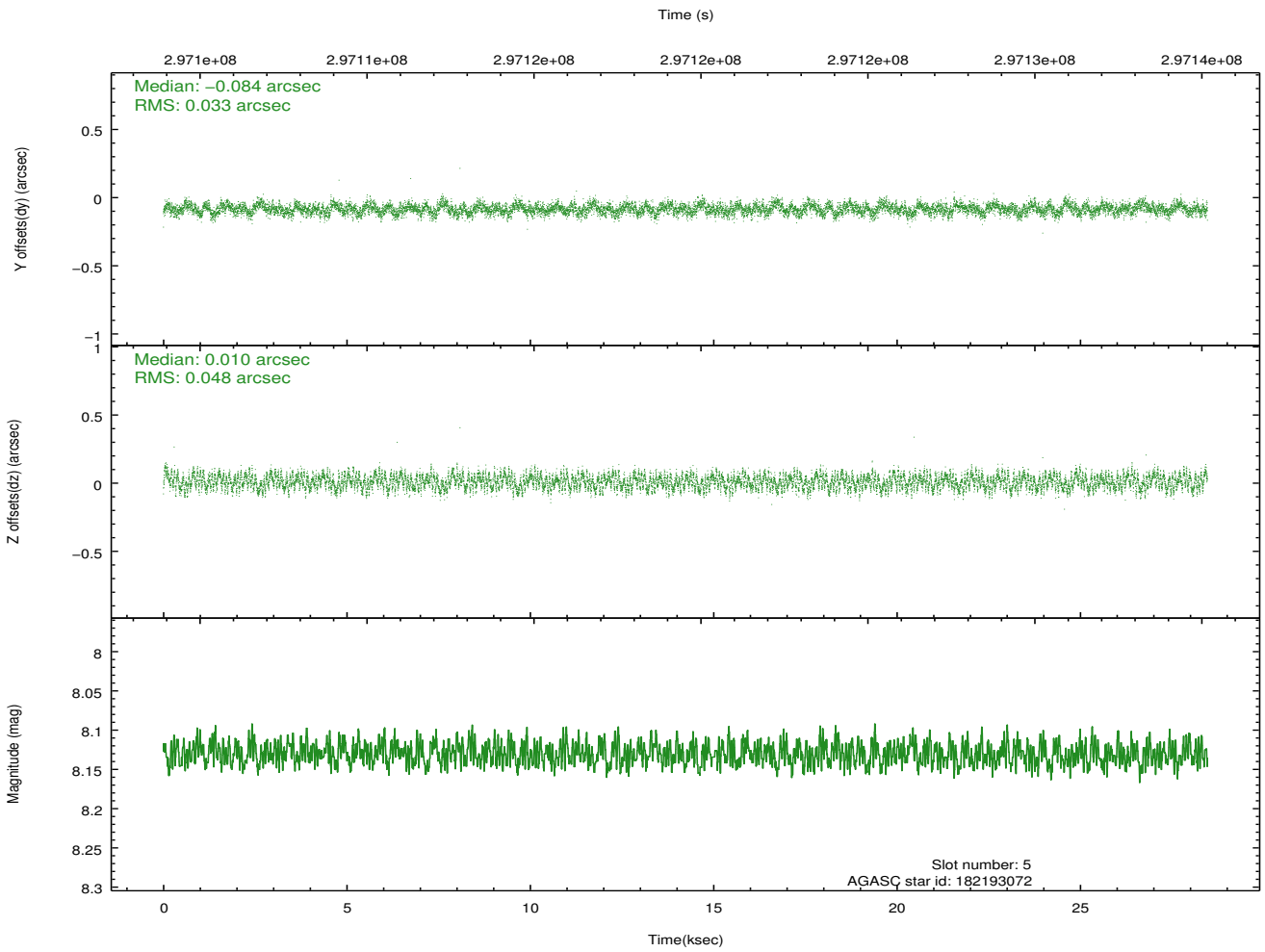
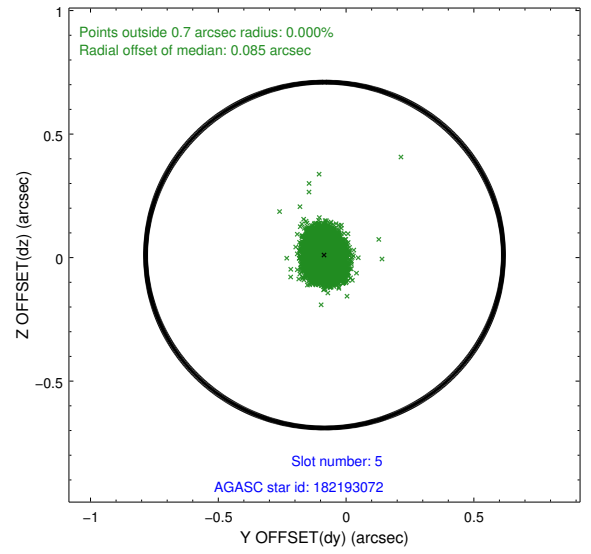
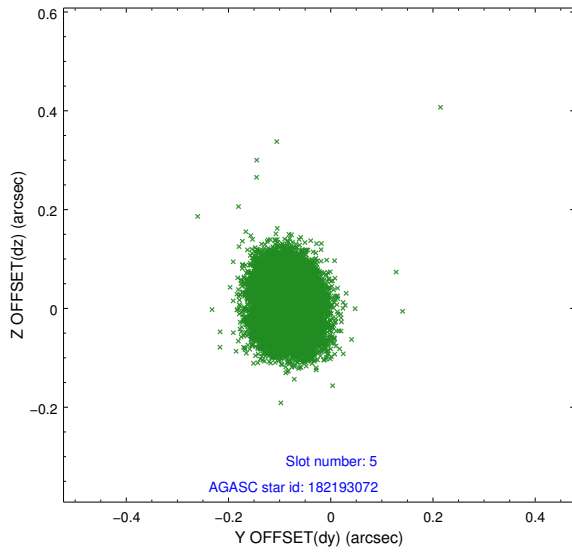
2.4.1 Slot 3



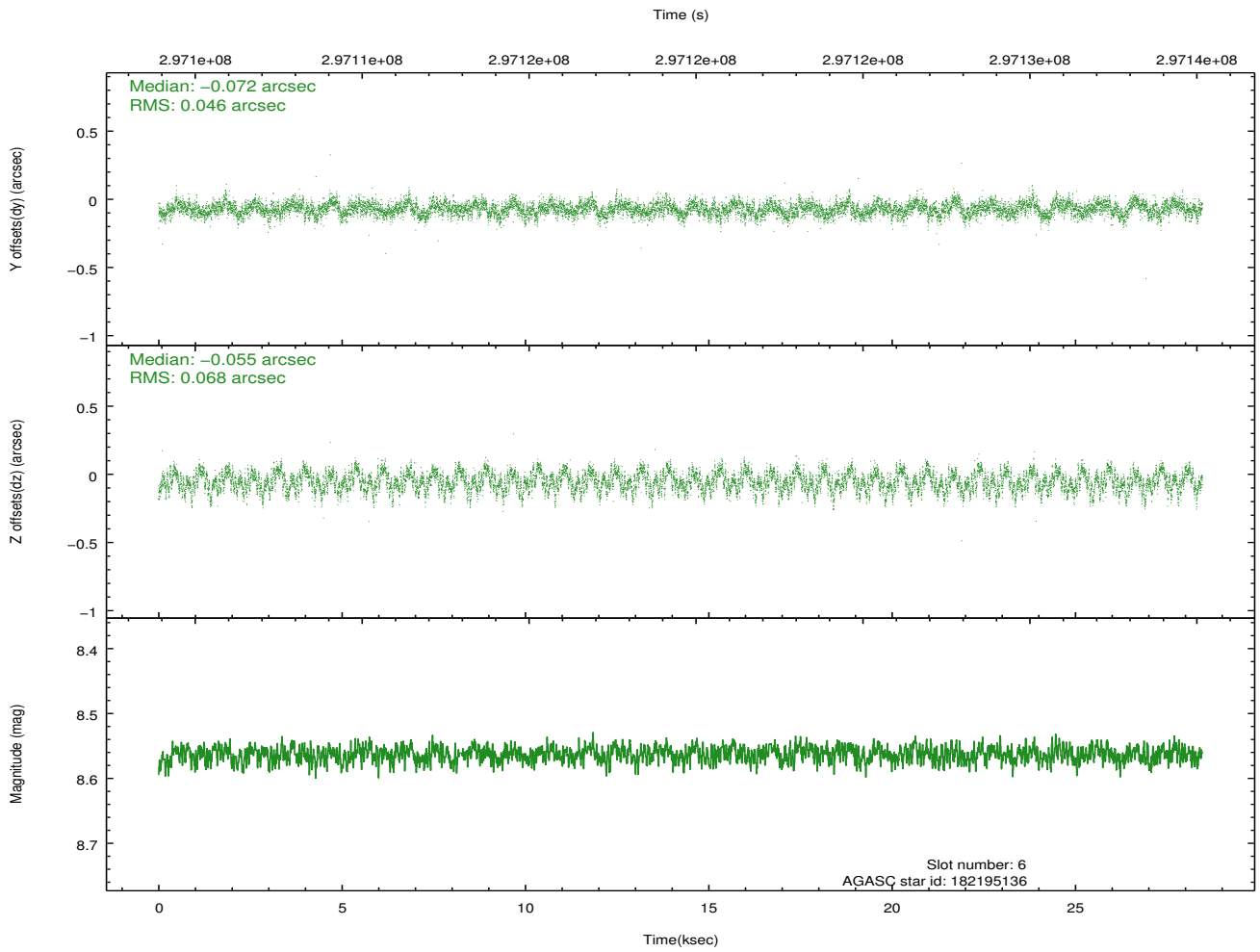
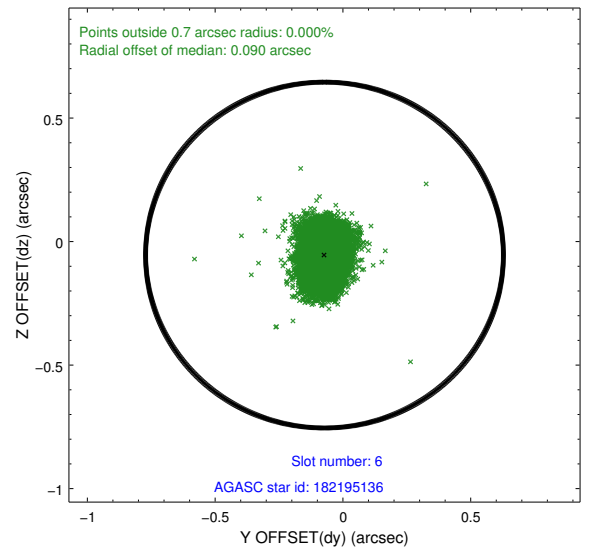
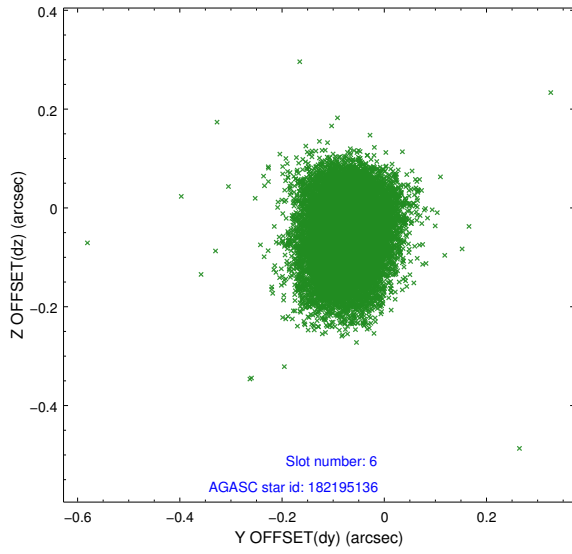
2.4.2 Slot 4



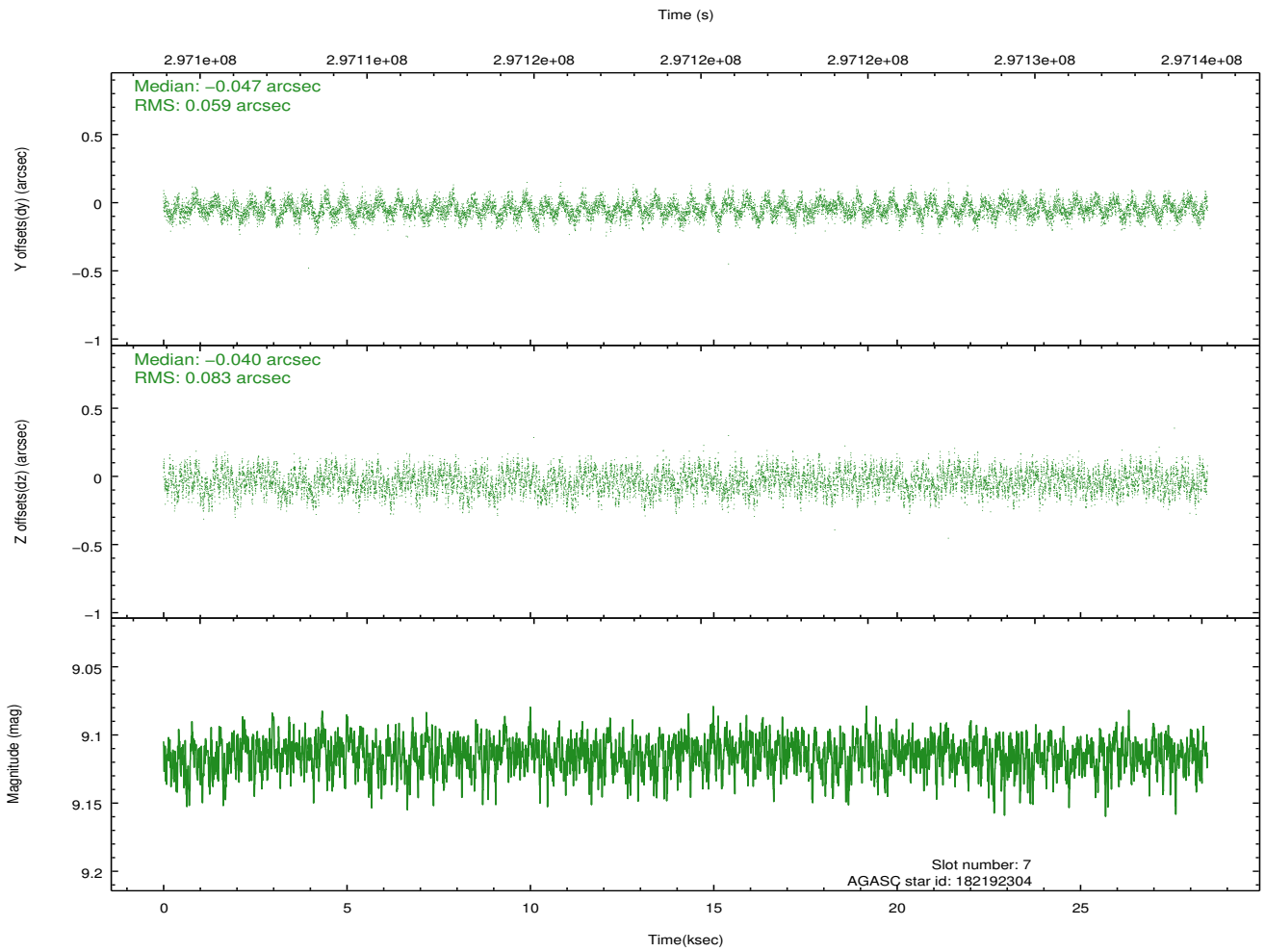
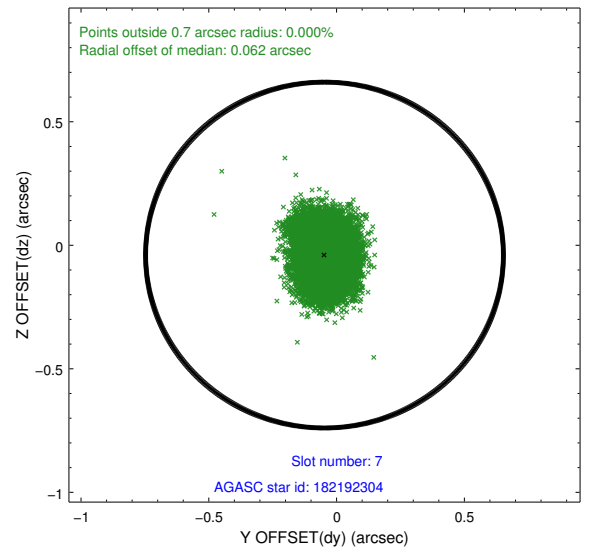
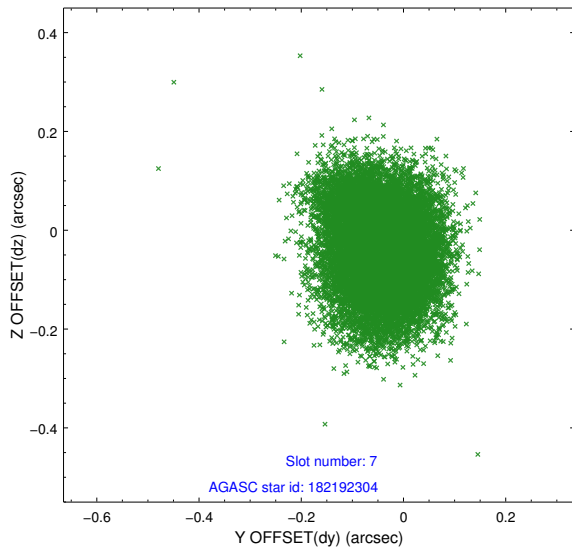
2.4.3 Slot 5



2.4.4 Slot 6

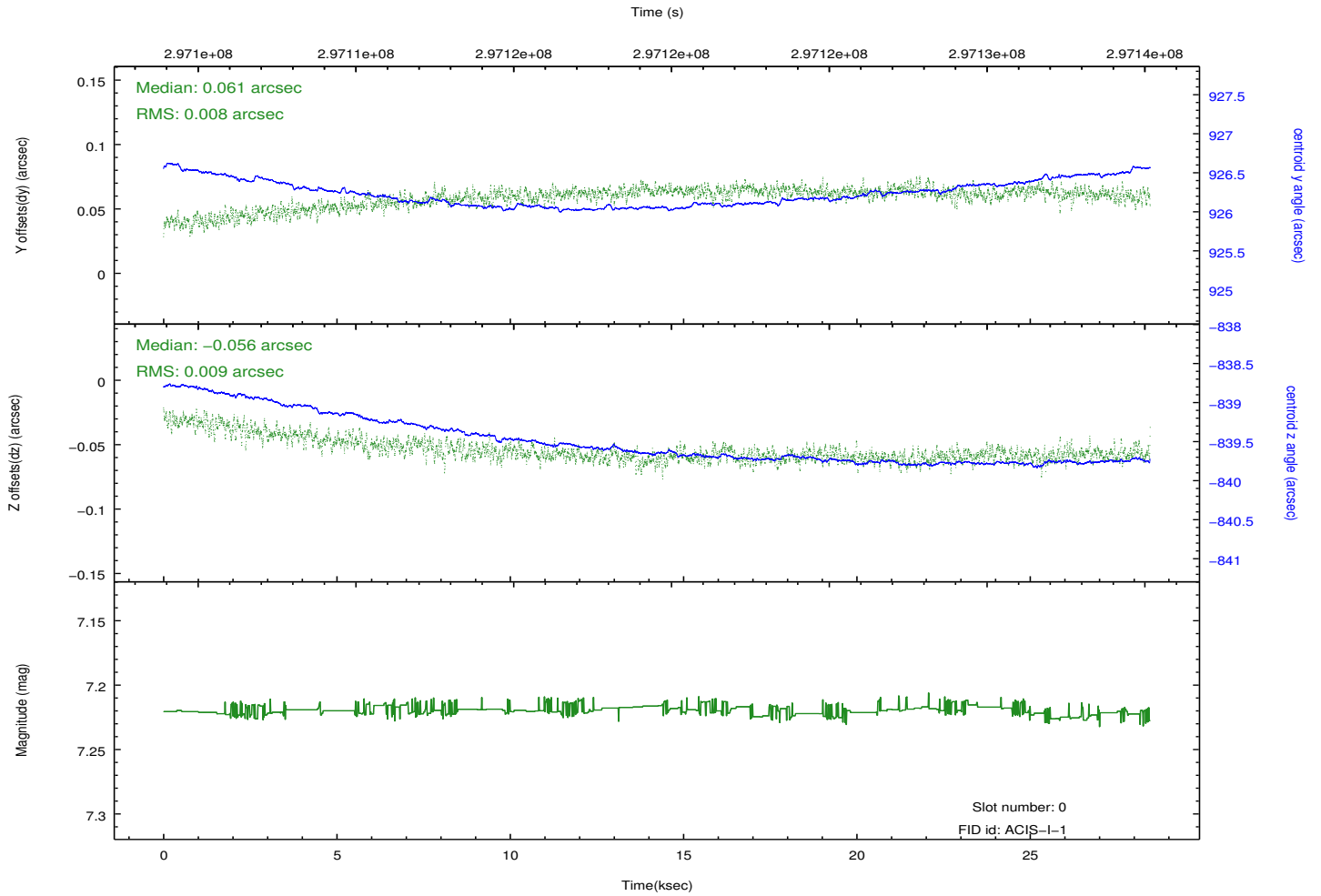
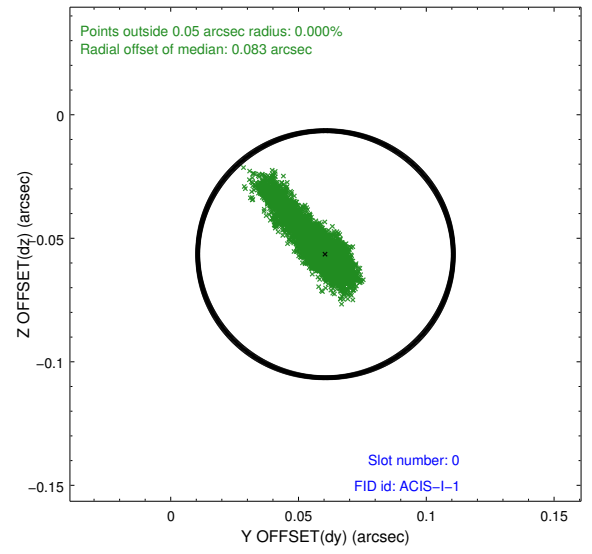
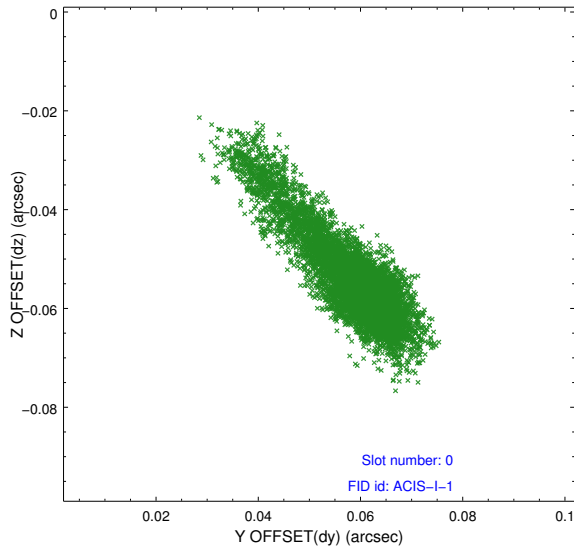


2.4.5 Slot 7

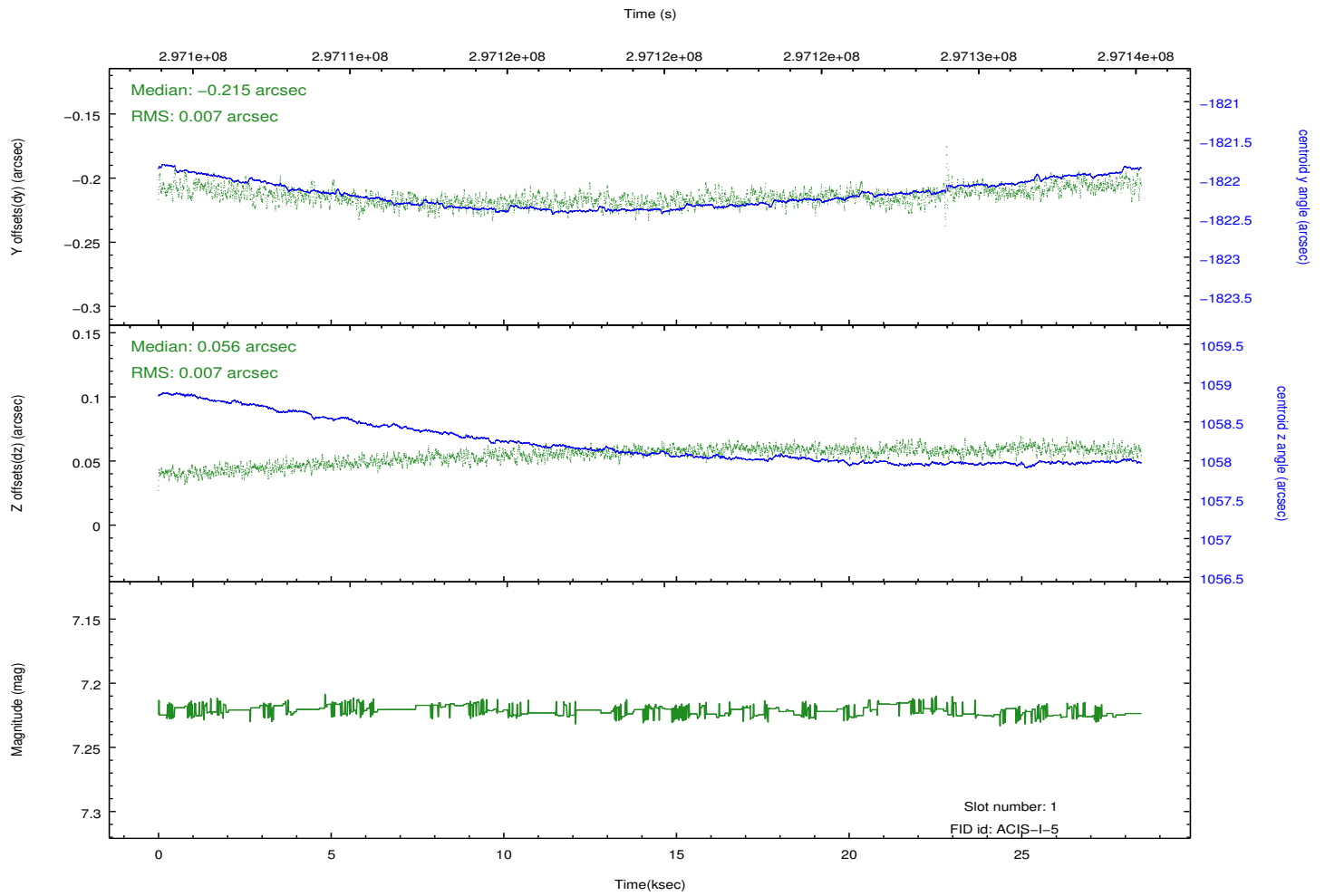
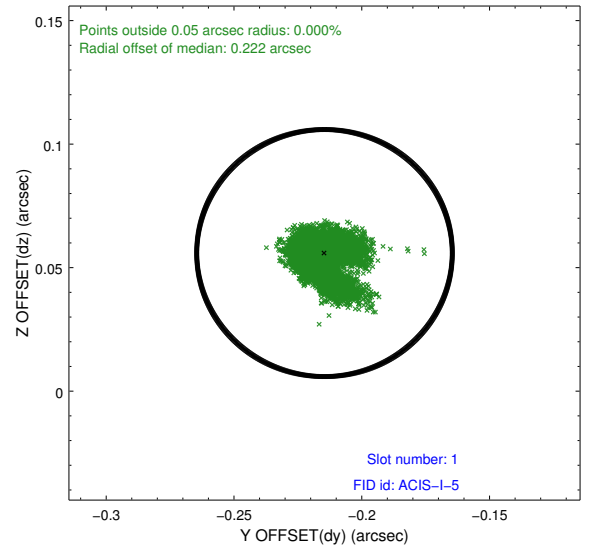
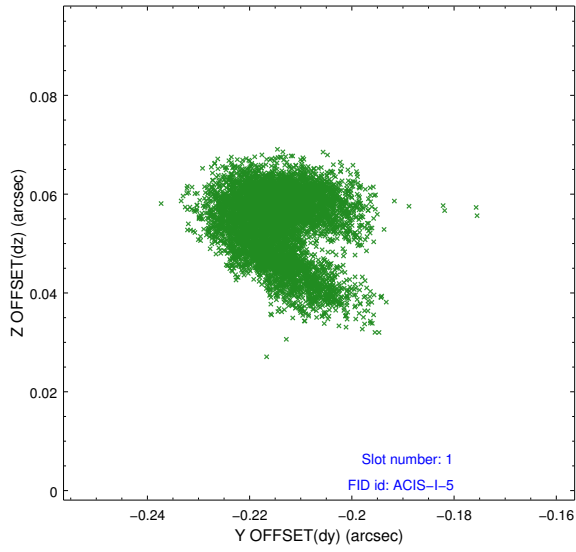


2.5 FID Slots

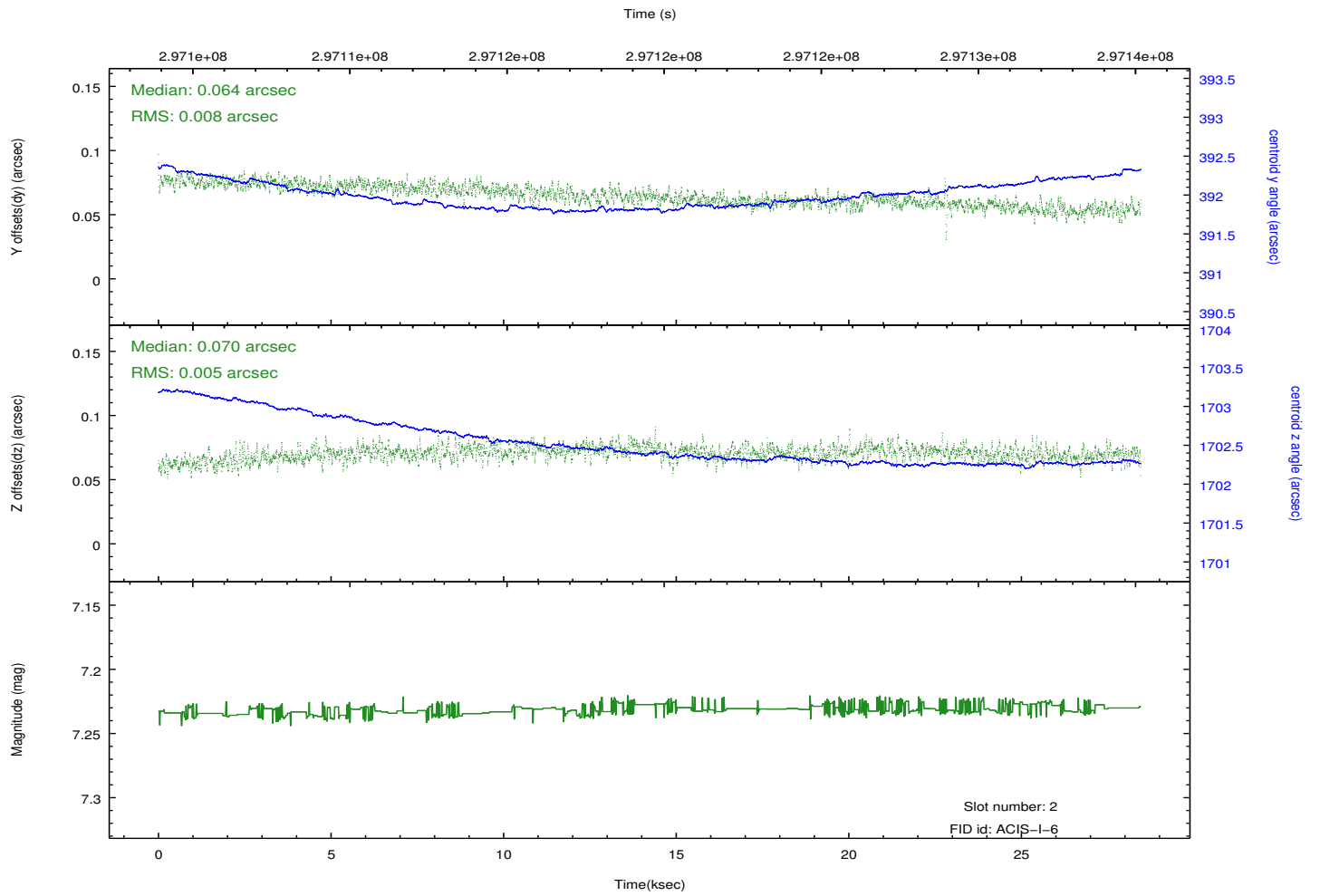
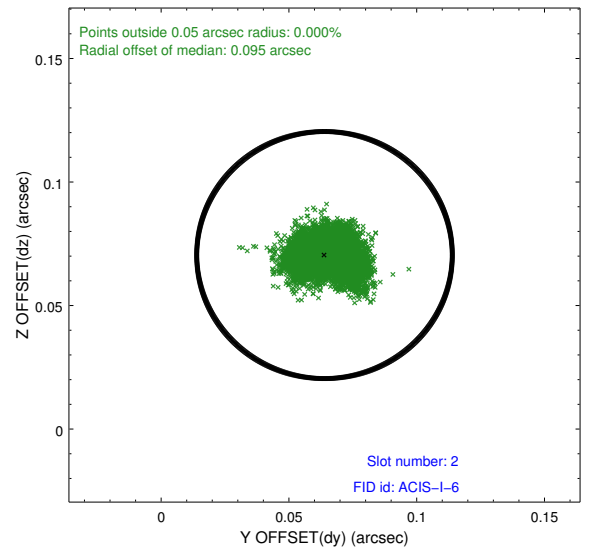
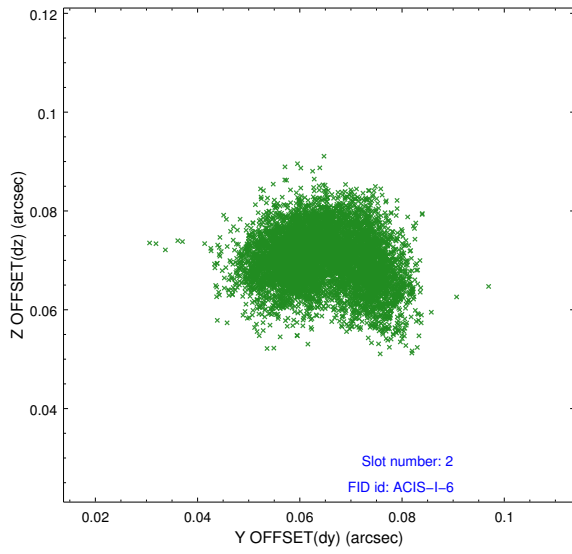
2.5.1 Slot 0



2.5.2 Slot 1



2.5.3 Slot 2



A Summary

A.1 Status

V&V Scientist	Jen Lauer
V&V Date (YYYY-MM-DD)	2012.04.26
V&V Edition	1
V&V Disposition and Status	OK
V&V Charge Time	28.0457002

A.2 Comments