

V&V Reference Report

L2 ASCDS Version : 8.4.4

Observation 8206 - L2 Version 2
Chandra X-Ray Center

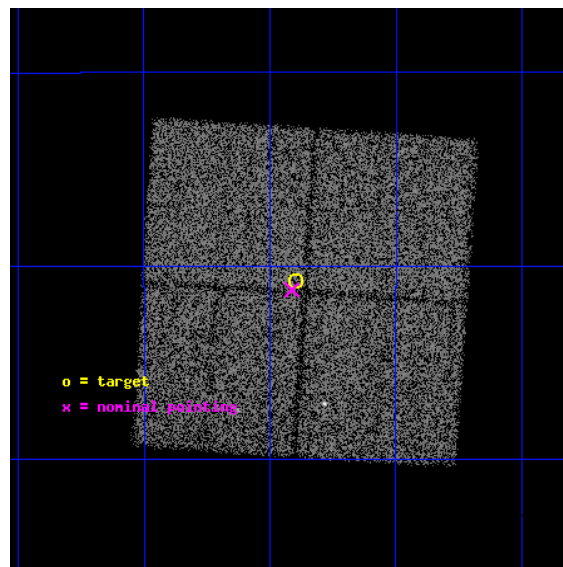
L2 Processing Date : Apr 29 2012

Contents

1	Front	2
2	OBI	3
2.1	OBI	3
2.1.1	Images	3
2.1.2	Bias	3
2.1.3	Parameters	4
2.1.4	Events	4
2.2	Compared Parameters	5
2.3	Aspect	6
2.4	Star Slots	9
2.4.1	Slot 3	9
2.4.2	Slot 4	10
2.4.3	Slot 5	11
2.4.4	Slot 6	12
2.4.5	Slot 7	13
2.5	FID Slots	14
2.5.1	Slot 0	14
2.5.2	Slot 1	15
2.5.3	Slot 2	16
A	Summary	17
A.1	Status	17
A.2	Comments	17

1 Front

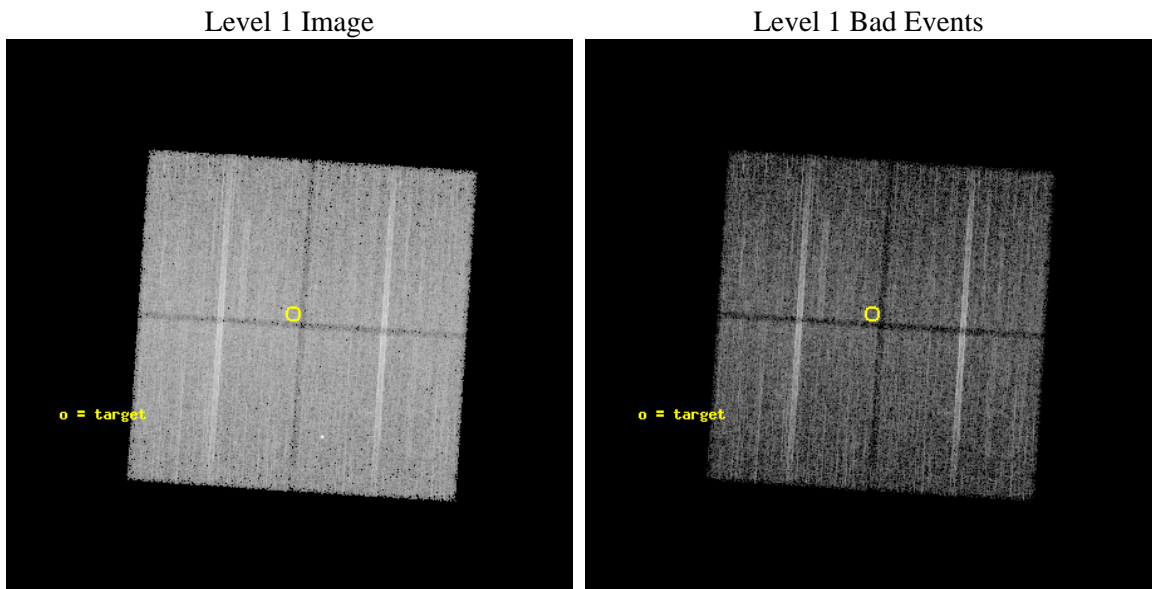
seq_num	600642	Sequence number
obs_id	8206	Observation id
title	Galactic Bulge Latitude Survey-2	Proposal title
observer	Professor Johnathan Grindlay	Principal investigator
object	GBW26	Source name
dtcycle	0	
cycle	P	events from which exps? Prim/Second/Both
ra_targ	265.6	Observer's specified target RA [deg]
dec_targ	-28.513056	Observer's specified target Dec [deg]
ra_nom	265.60329139152	Nominal RA [deg]
dec_nom	-28.52058783749	Nominal Dec [deg]
roll_nom	273.81026250993	Nominal Roll [deg]
revision	2	Processing version of data
ontime	14695.798178971	Sum of GTIs [s]
livetime	14503.786756873	Livetime [s]
ontime0	14695.675058961	Sum of GTIs [s]
ontime1	14686.29314822	Sum of GTIs [s]
ontime2	14695.757138968	Sum of GTIs [s]
ontime3	14695.798178971	Sum of GTIs [s]
l2events	67598	Number of level 2 events



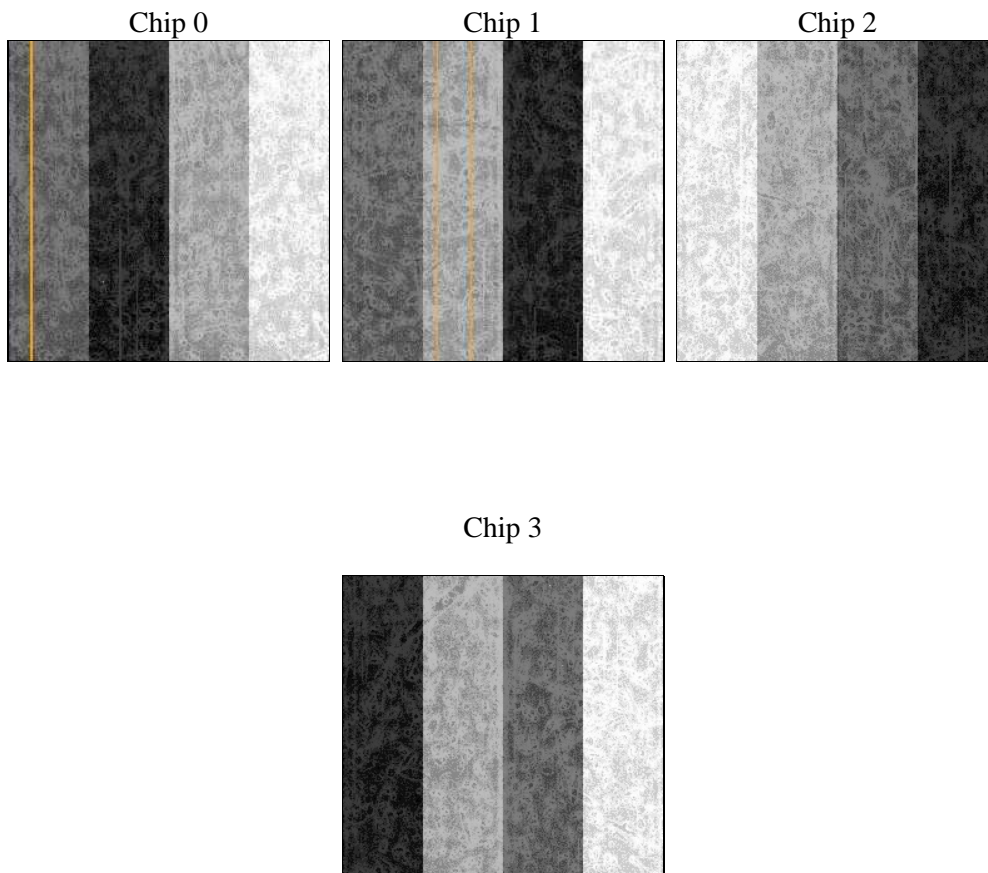
2 OBI

2.1 OBI

2.1.1 Images



2.1.2 Bias



2.1.3 Parameters

obi_num	0	Obi number	sched_exp_time	14900.000000	[s] Scheduled observation exposure time
ascdsver	8.4.4	Processing system revision	ontime	14695.798178971	Sum of GTIs [s]
caldbver	4.4.9	 	ontime0	14695.675058961	Sum of GTIs [s]
date	2012-04-29T02:13:25	Date and time of file creation	ontime1	14686.29314822	Sum of GTIs [s]
revision	2	Processing version of data	ontime2	14695.757138968	Sum of GTIs [s]
			ontime3	14695.798178971	Sum of GTIs [s]
			l1events	548208	Number of level 1 events

2.1.4 Events

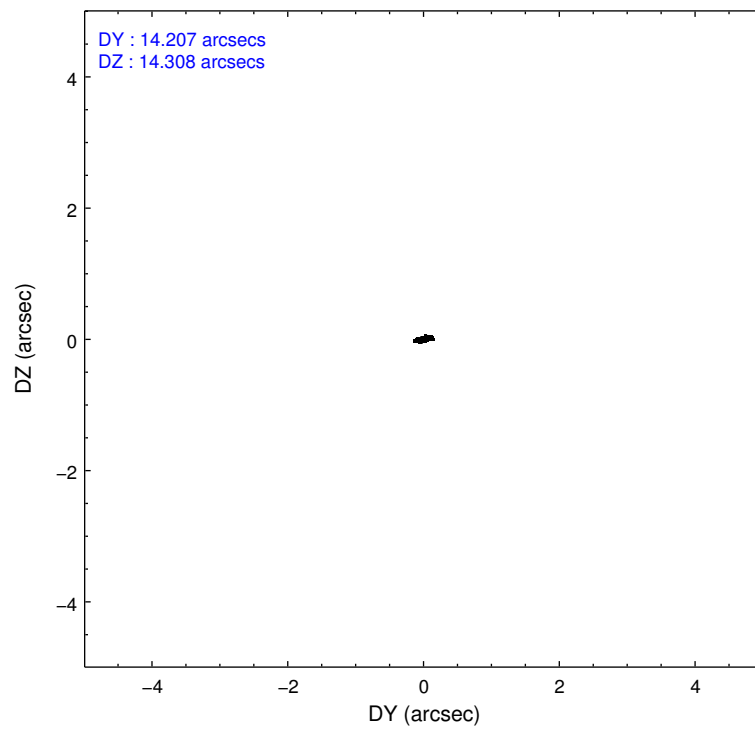
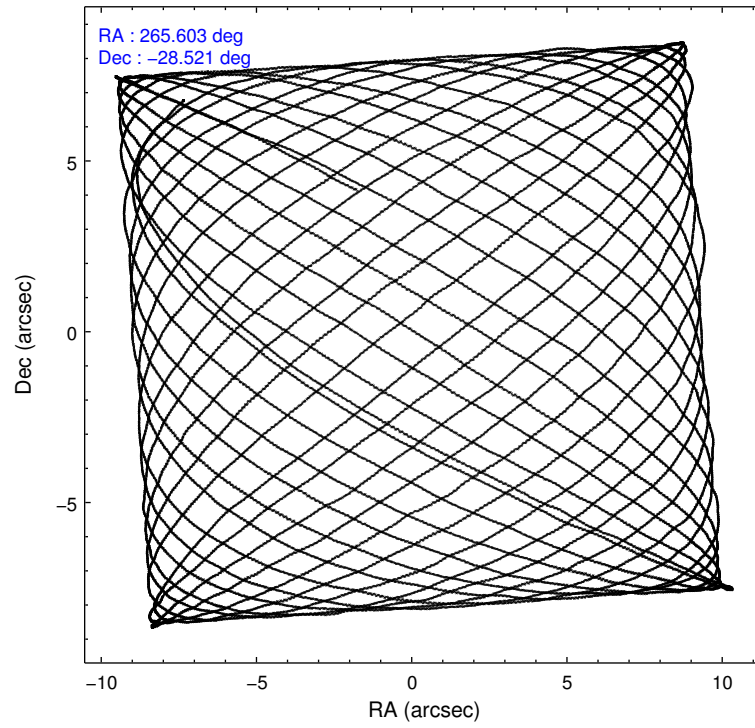
	ccd 0	ccd 1	ccd 2	ccd 3
level 1 events	132023	130648	145168	140369
rejected events	112008	110293	126632	121255
rejected %	84%	84%	87%	86%

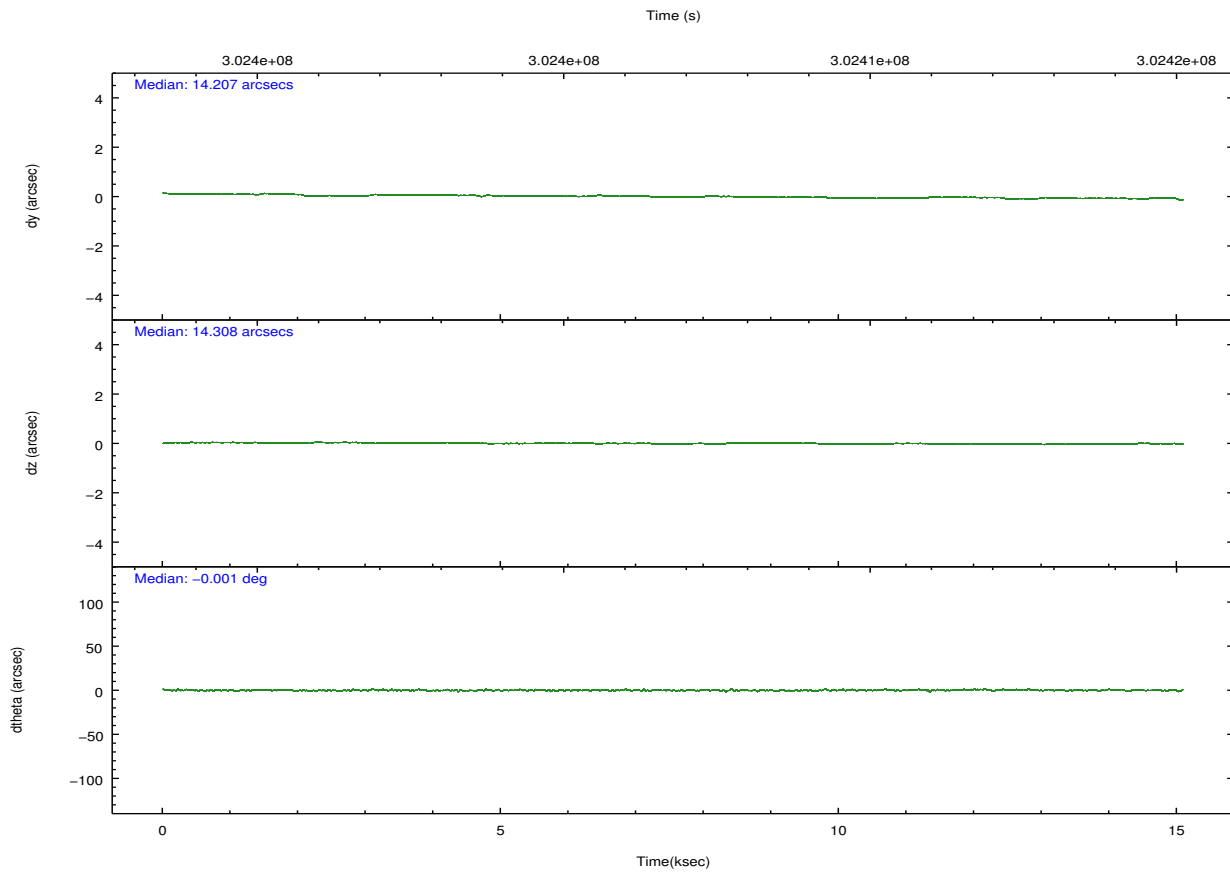
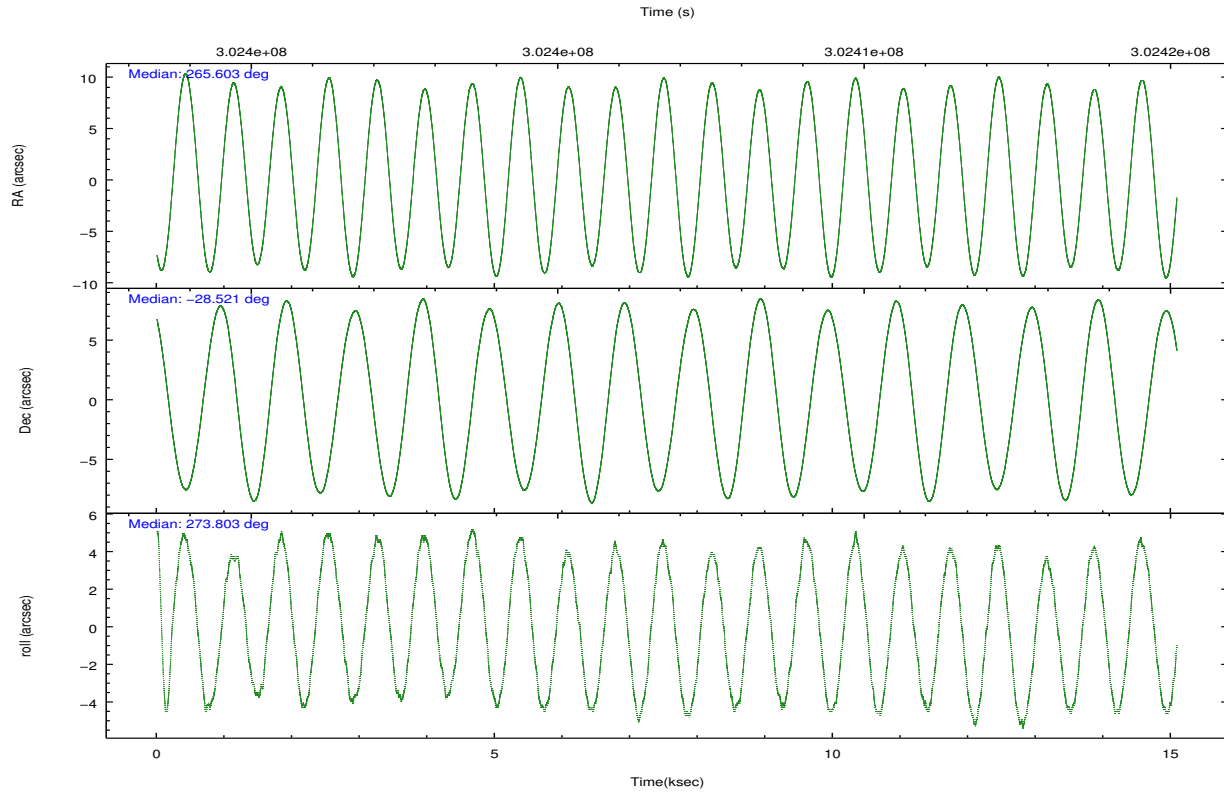
	ccd 0	ccd 1	ccd 2	ccd 3
grade 0 events	9451	8918	8844	9032
	7%	6%	6%	6%
grade 1 events	101	72	105	119
	0%	0%	0%	0%
grade 2 events	4136	4332	3723	3637
	3%	3%	2%	2%
grade 3 events	1693	1778	1619	1658
	1%	1%	1%	1%
grade 4 events	1622	1758	1613	1680
	1%	1%	1%	1%
grade 5 events	5694	5972	5587	6590
	4%	4%	3%	4%
grade 6 events	3117	3574	2739	3109
	2%	2%	1%	2%
grade 7 events	106209	104244	120938	114544
	80%	79%	83%	81%

2.2 Compared Parameters

Parameter	Planned	Actual	Parameter	Planned	Actual
Instrument	ACIS	ACIS	Obspar format version number	7	7
Detector	ACIS-0123	ACIS-0123	Obspar file type	PREDICTED	ACTUAL
Grating	NONE	NONE	Obspar update status	NONE	UPDATED
Data mode	VFAINT	VFAINT	Number of optional ACIS chips dropped	0	0
Observation mode	POINTING	POINTING	On-chip summing requested	N	N
[deg] Pointing RA	265.585801	265.6032913915164	Subarray requested	NONE	NONE
[deg] Pointing Dec	-28.497809	-28.52058783749007	Alternating exposures requested	N	N
[deg] Pointing Roll	273.593225	273.8102625099338	[s] Primary exposure time	0.000000	3.1
[mm] SIM focus pos	-0.782348	-0.7809083437167272			
[mm] SIM defocus	0	0.001439871863259334			
[mm] SIM translation stage pos	-233.592463	-233.5874344608287			
[mm] SIM translation stage offset	0	-0.005018542100998502			
[s] Observation start time (MET)	302399430.184000	302399054.74476			
Observation start date	2007-08-01T23:49:25	2007-08-01T23:44:14			
[s] Observation end time (MET)	302414330.184000	302414464.5955			
Observation end date	2007-08-02T03:57:45	2007-08-02T04:01:04			
Read mode	TIMED	TIMED			

2.3 Aspect



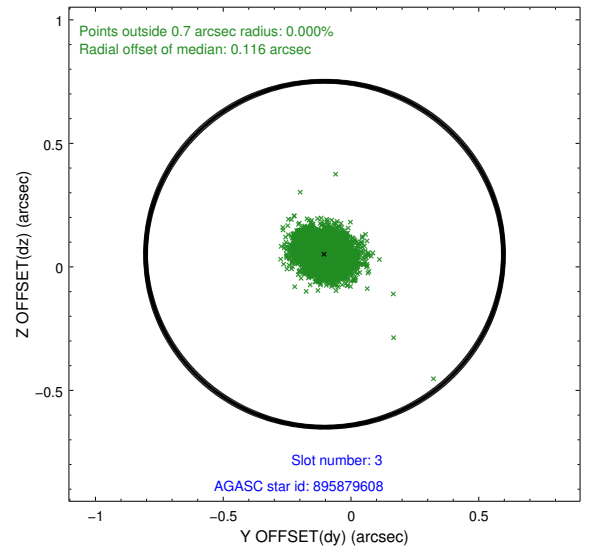
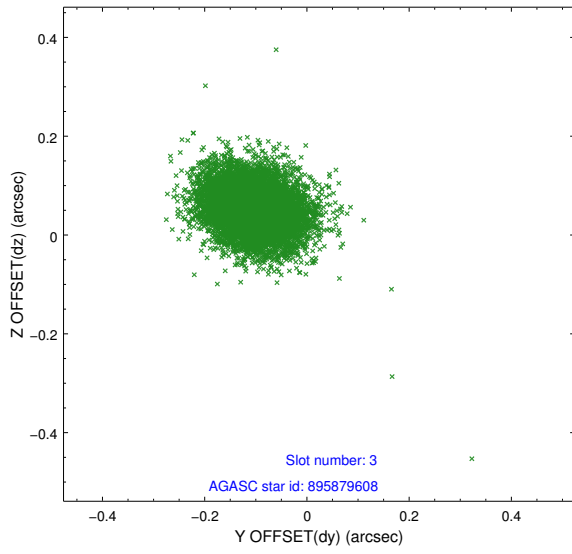


Slot Statistics

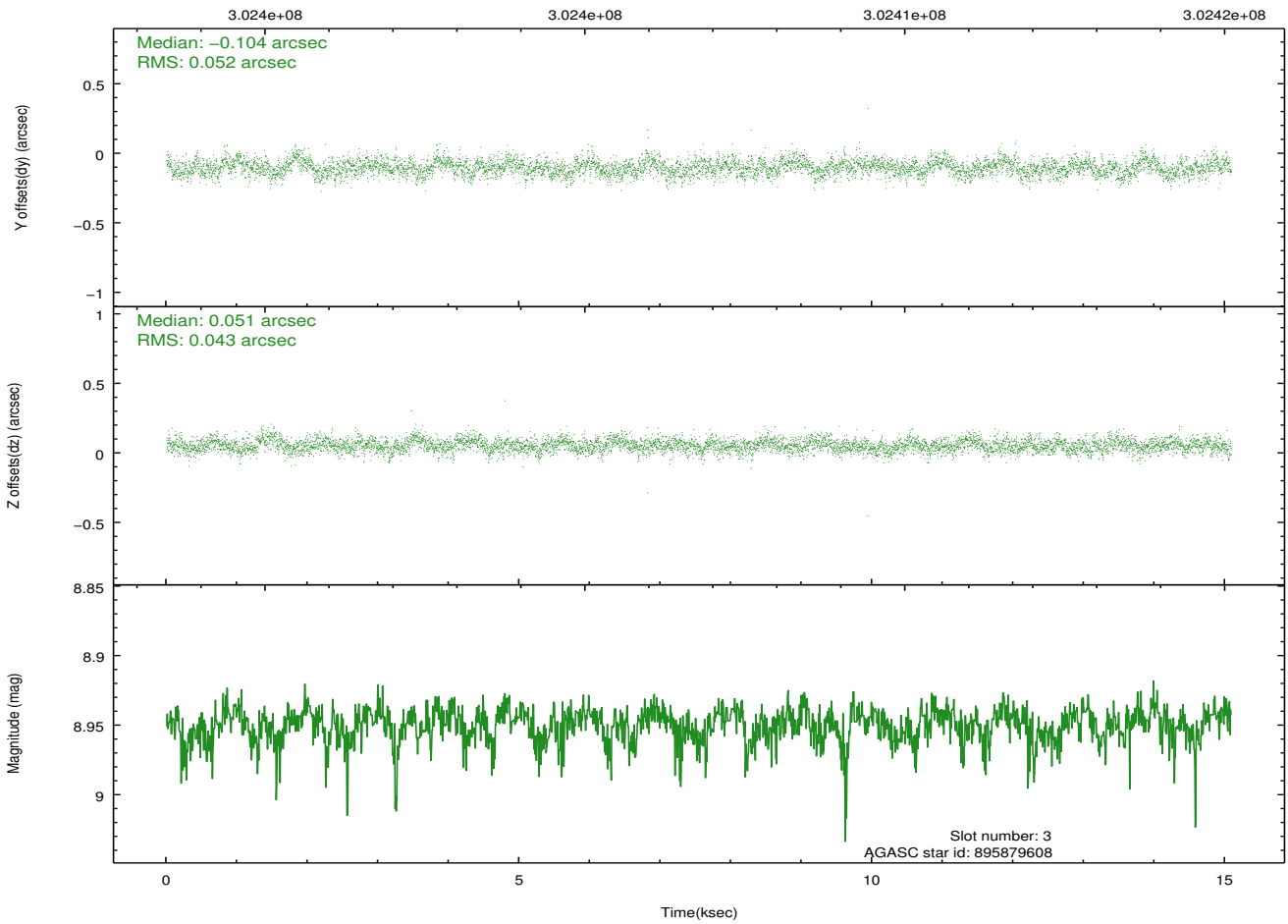
slot	status	id	mag	n_pts	med_dy	med_dz	dr1	dr2	ra	dec	mean_y	mean_z
0	FID	ACIS-I-2	7.14	3680	-0.015	-0.056	0.009	0.018	0.000000	0.000000	-768.93	-844.29
1	FID	ACIS-I-5	7.22	3680	-0.204	0.036	0.008	0.014	0.000000	0.000000	-1823.32	1059.51
2	FID	ACIS-I-6	7.24	3680	0.125	0.088	0.007	0.011	0.000000	0.000000	390.64	1704.38
3	GUIDE	895879608	8.95	7355	-0.104	0.051	0.070	0.116	265.708239	-27.843915	-2324.64	536.54
4	GUIDE	896402656	8.85	7355	-0.003	0.134	0.073	0.117	265.739192	-28.230753	-928.80	546.16
5	GUIDE	896402976	7.47	7360	0.116	-0.072	0.065	0.105	265.099474	-28.923203	1436.01	-1625.15
6	GUIDE	896538696	6.80	7360	-0.171	-0.176	0.053	0.085	266.298470	-28.325572	-470.61	2292.22
7	GUIDE	896532680	8.76	7357	0.160	0.055	0.093	0.144	266.342632	-28.496299	152.27	2390.30

2.4 Star Slots

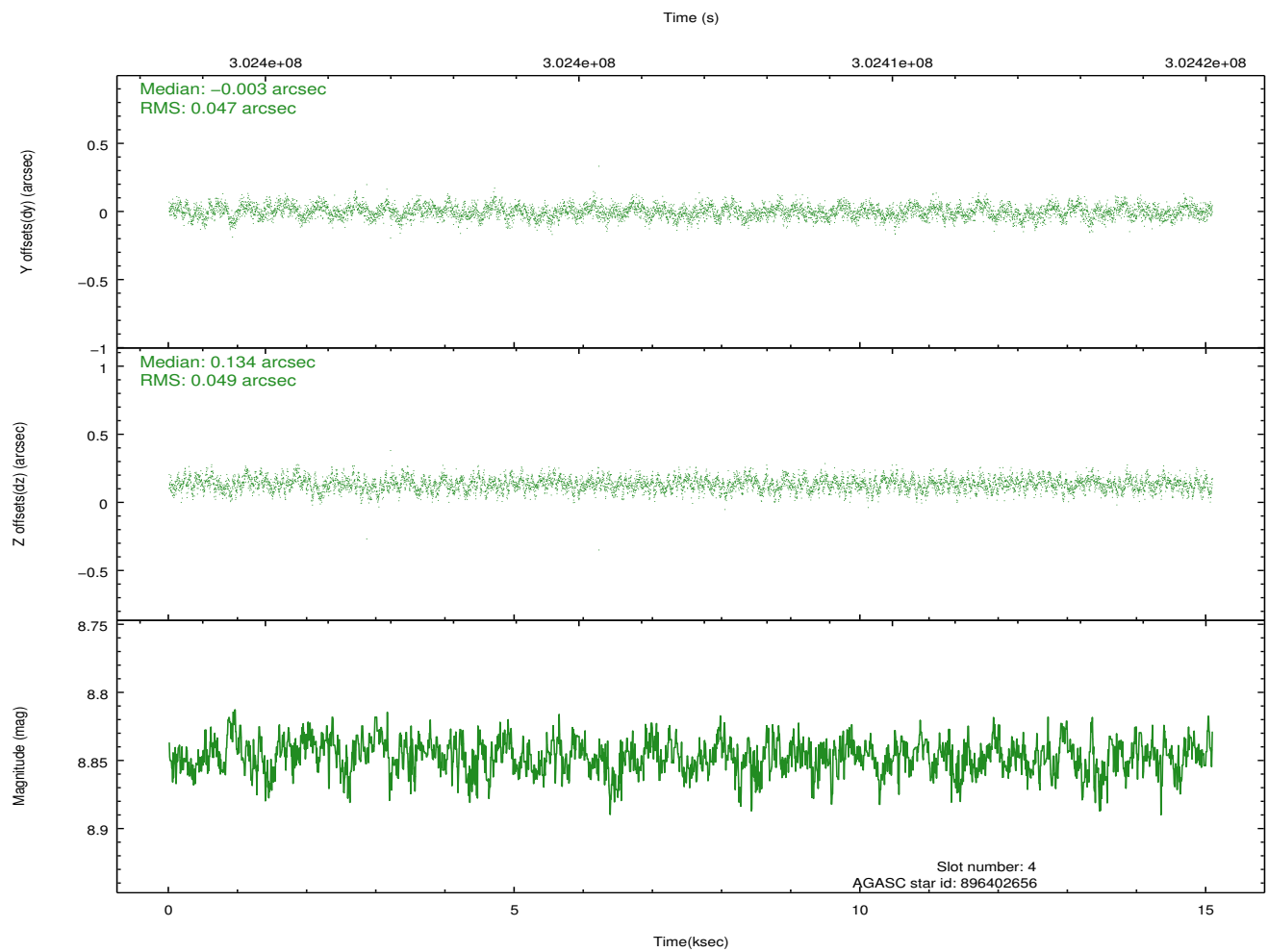
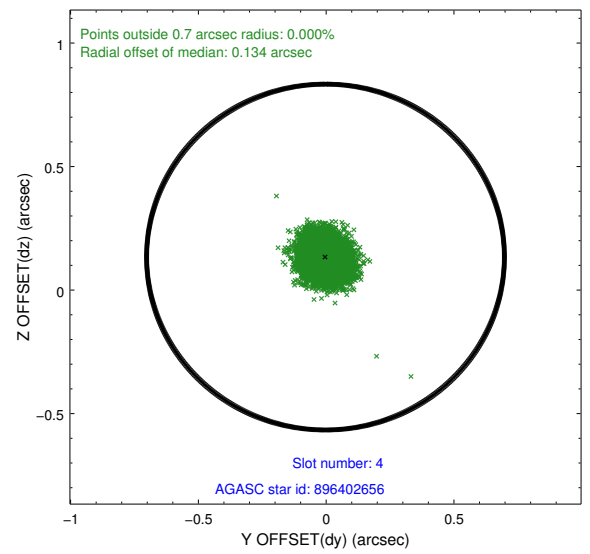
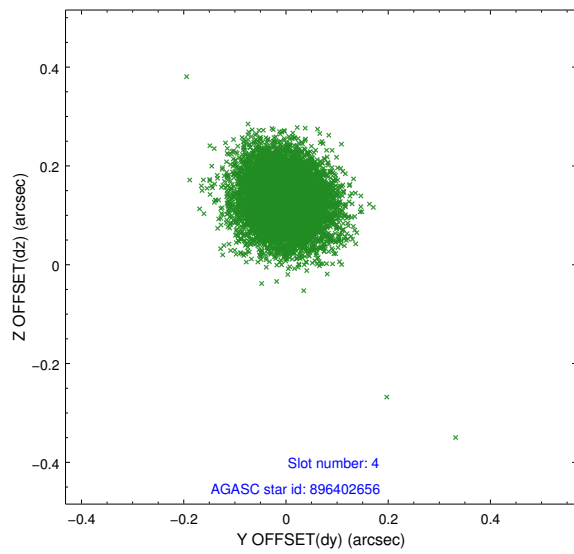
2.4.1 Slot 3



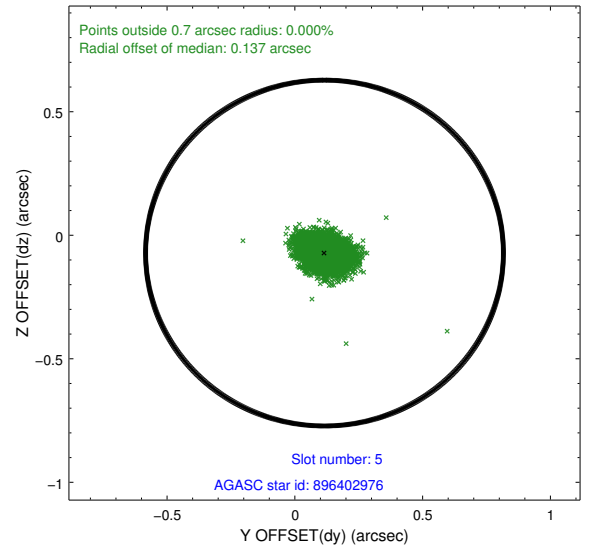
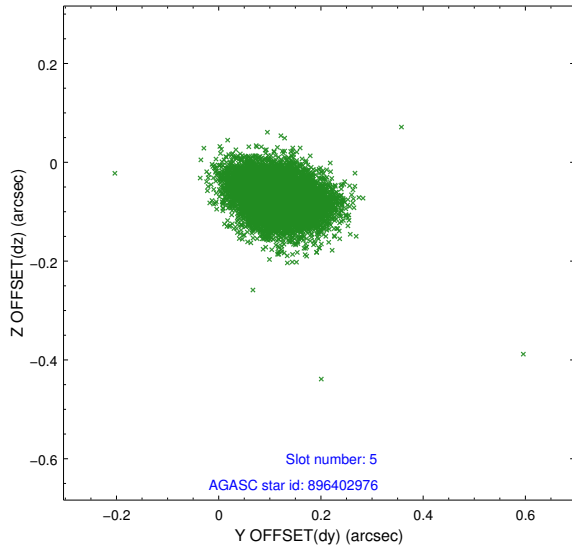
Time (s)



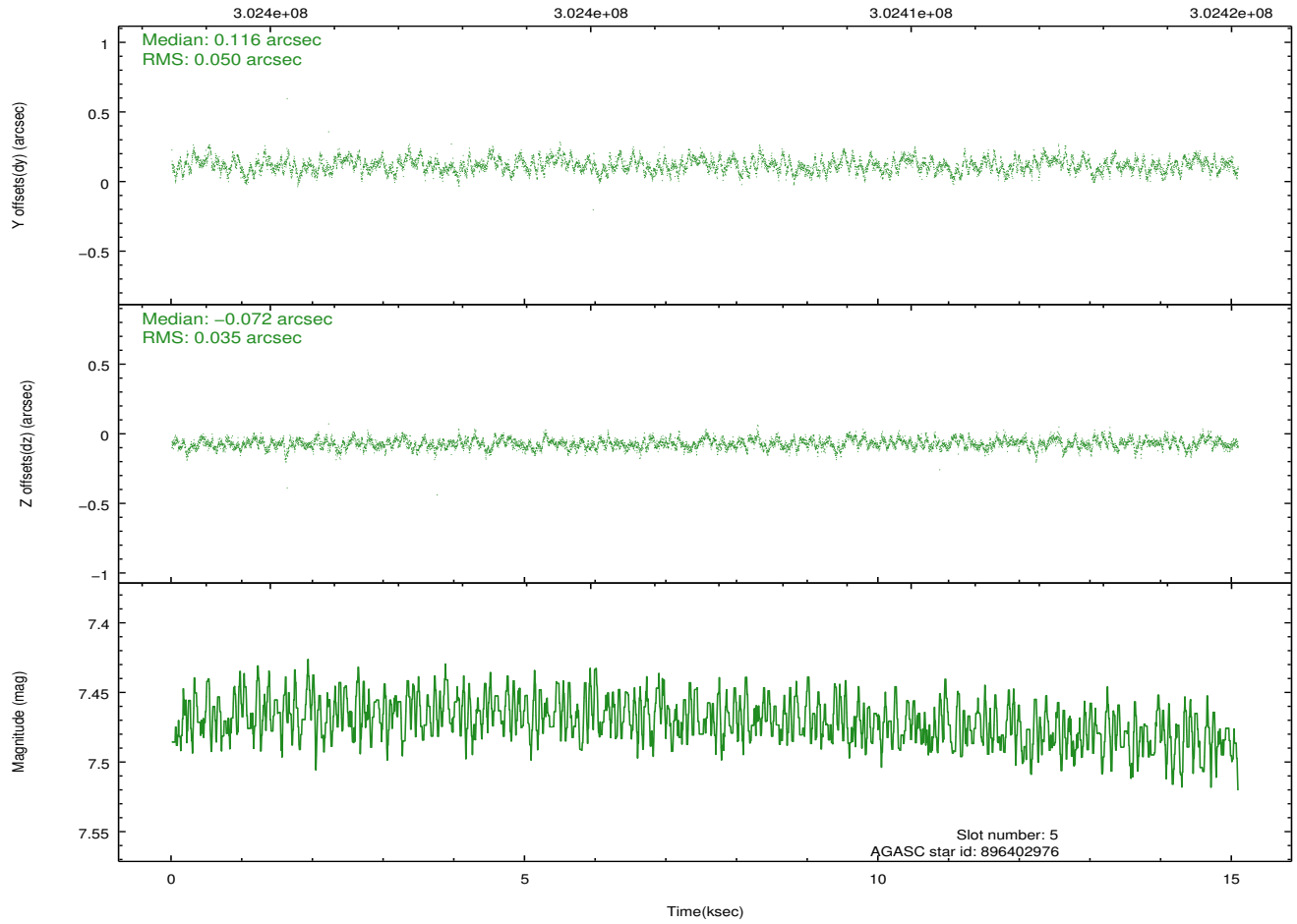
2.4.2 Slot 4



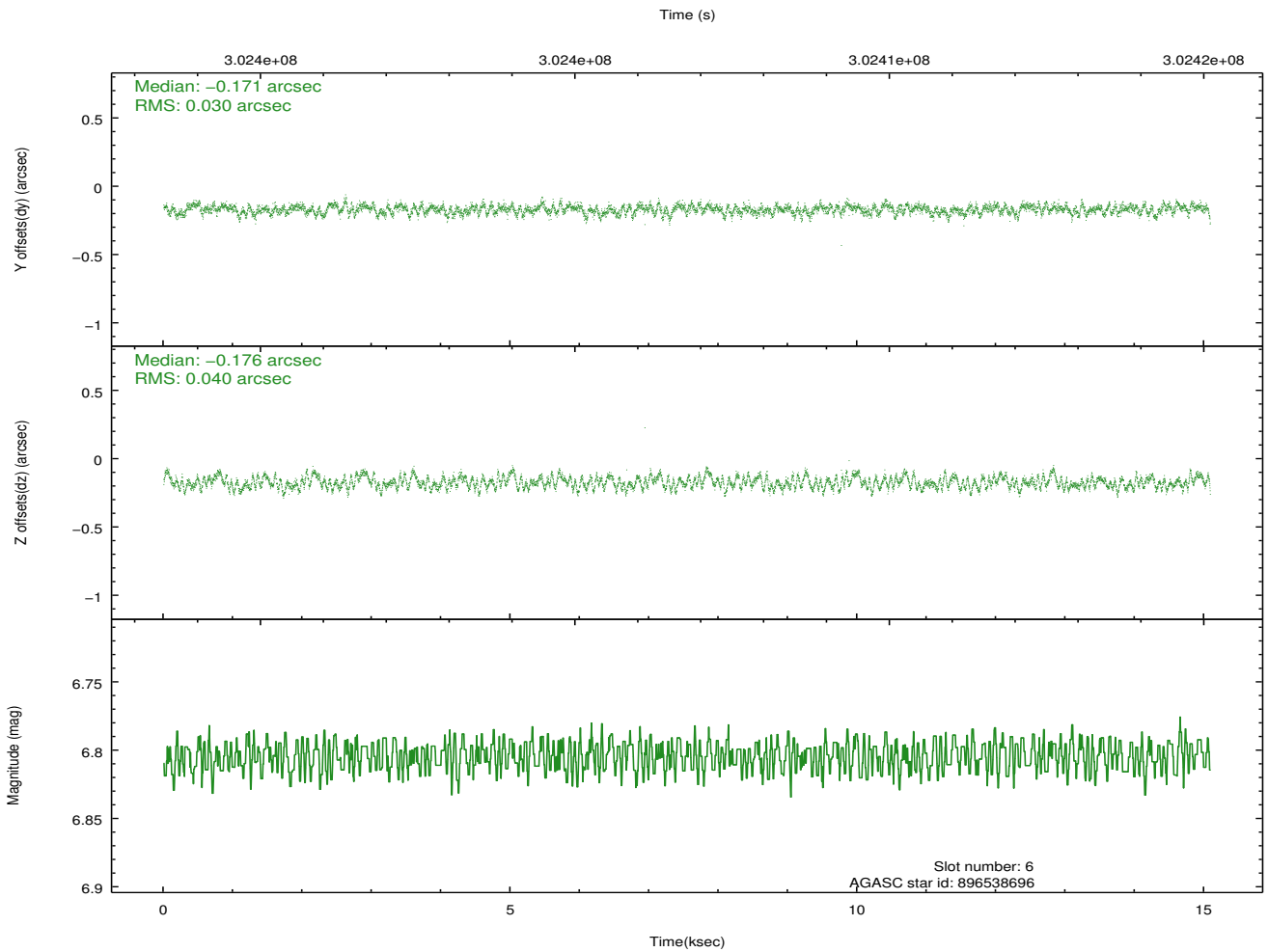
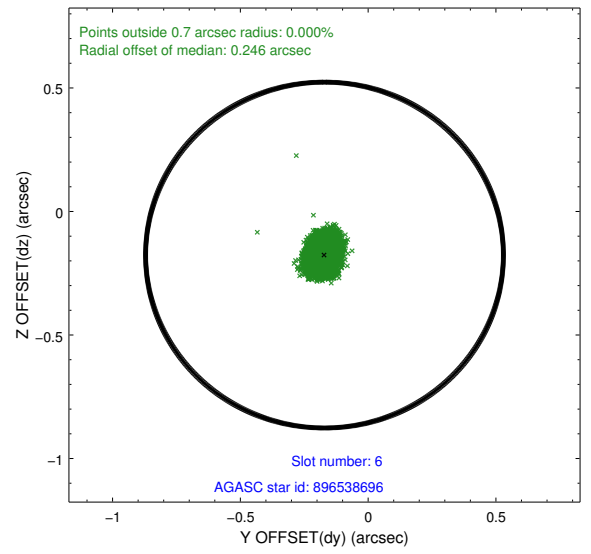
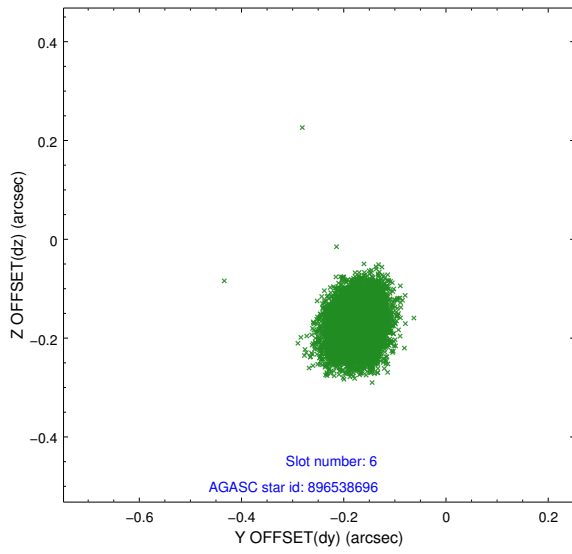
2.4.3 Slot 5



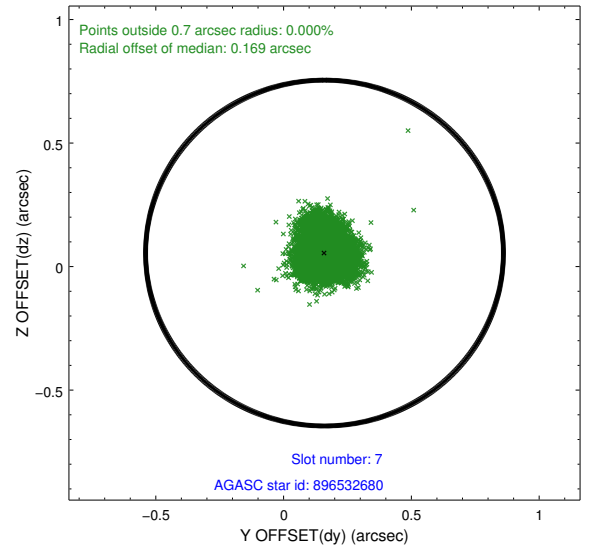
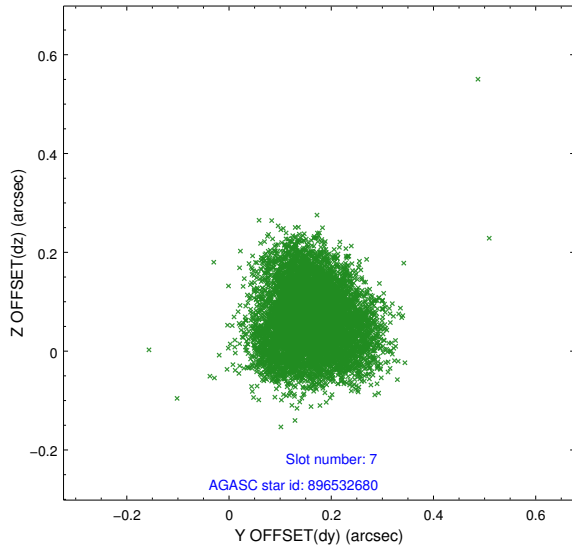
Time (s)



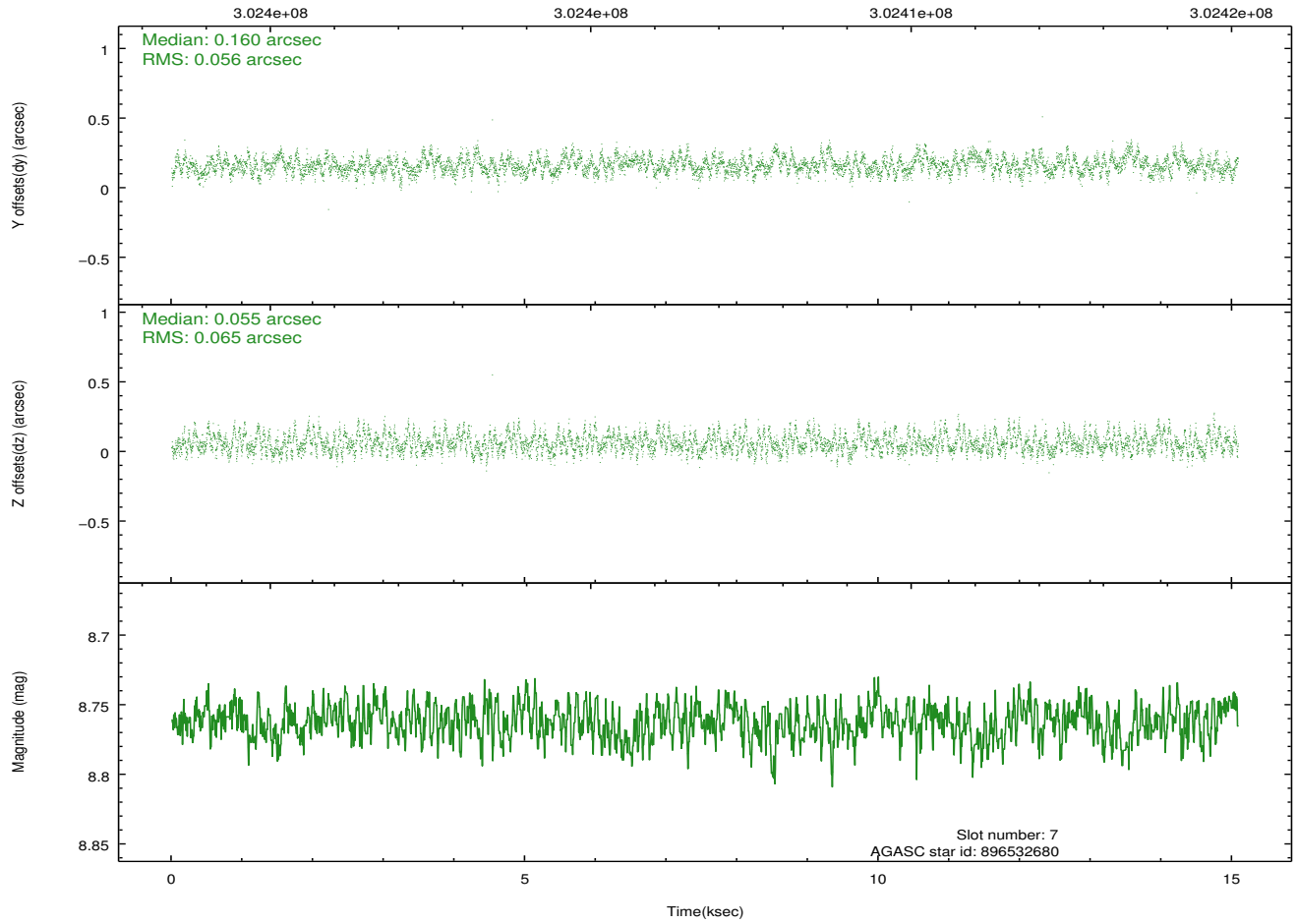
2.4.4 Slot 6



2.4.5 Slot 7

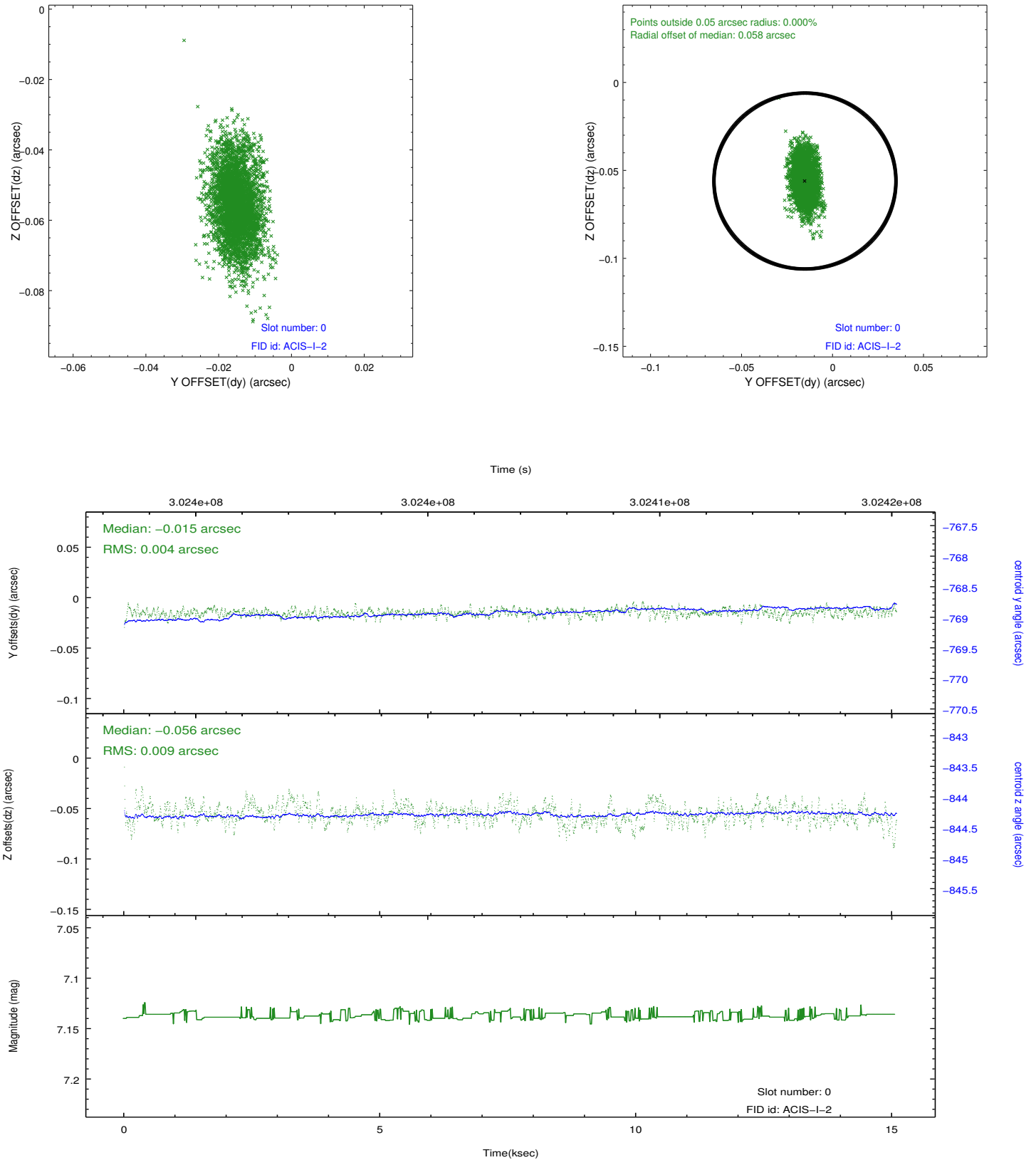


Time (s)

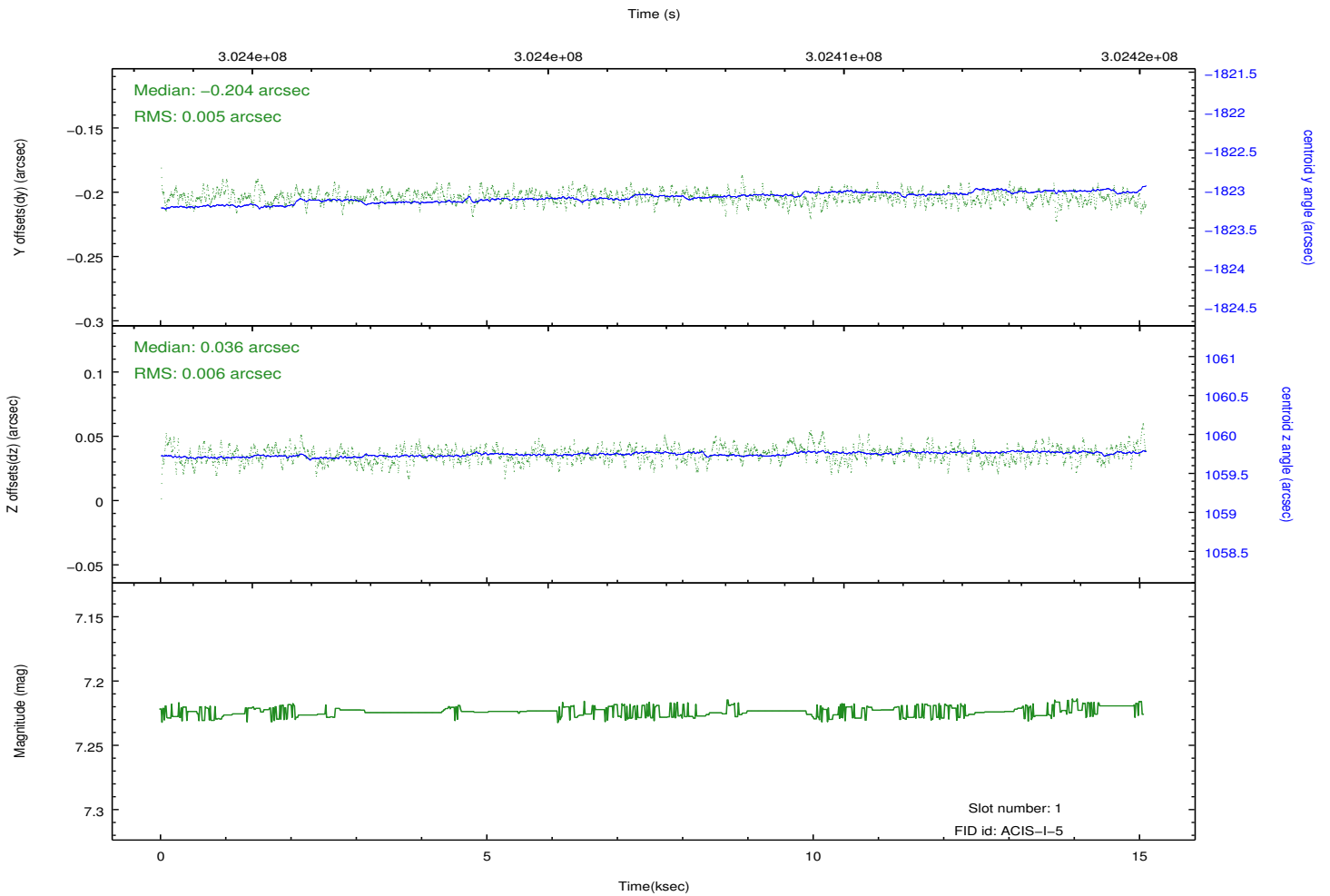
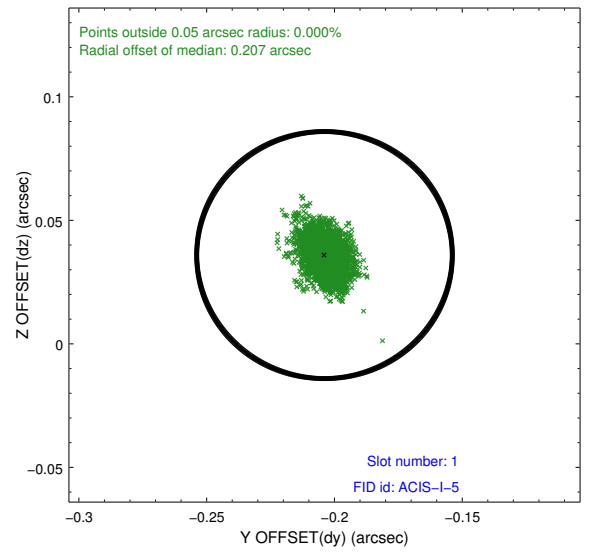
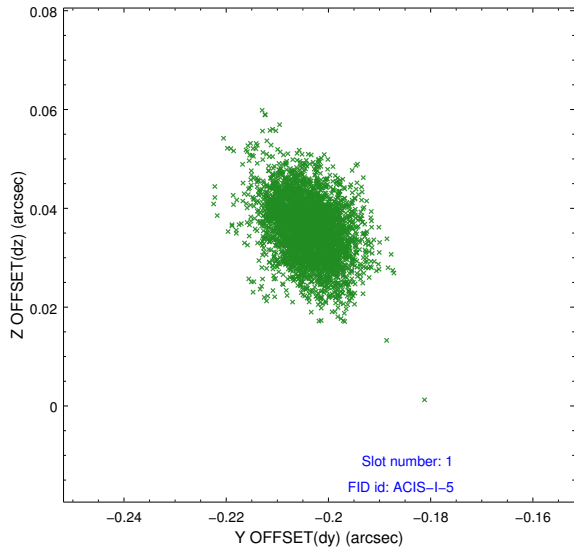


2.5 FID Slots

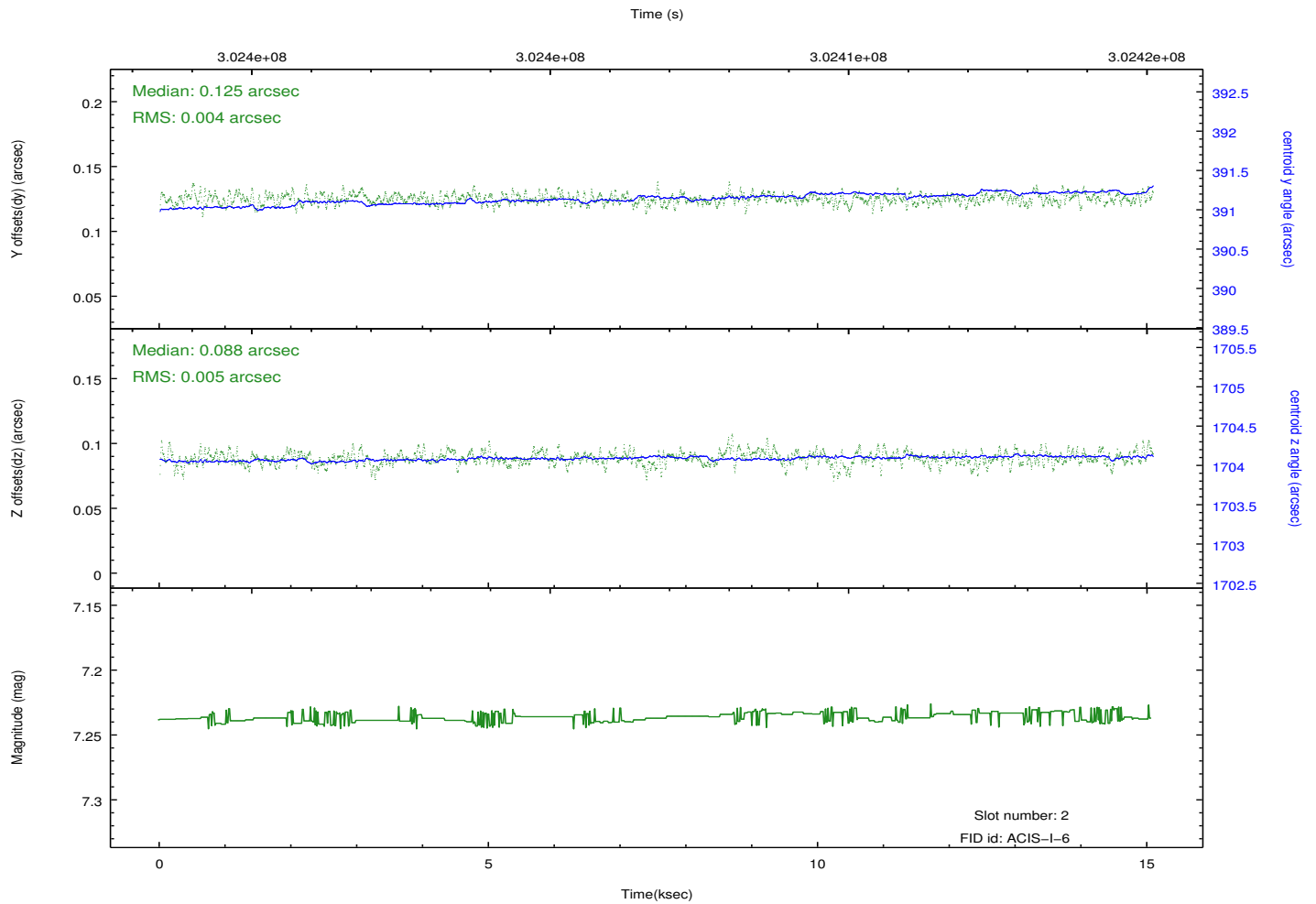
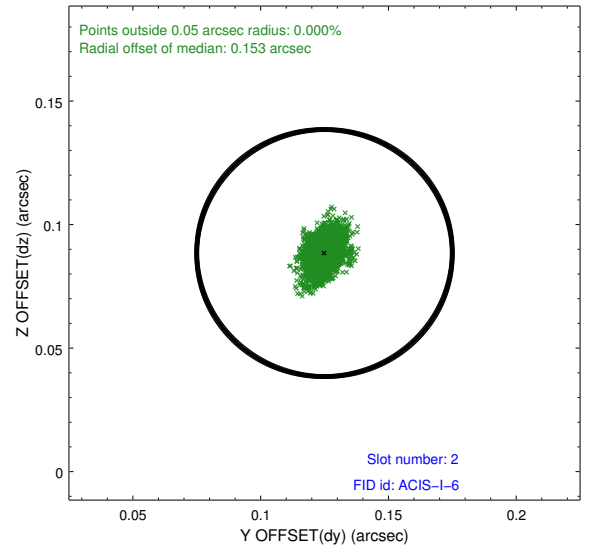
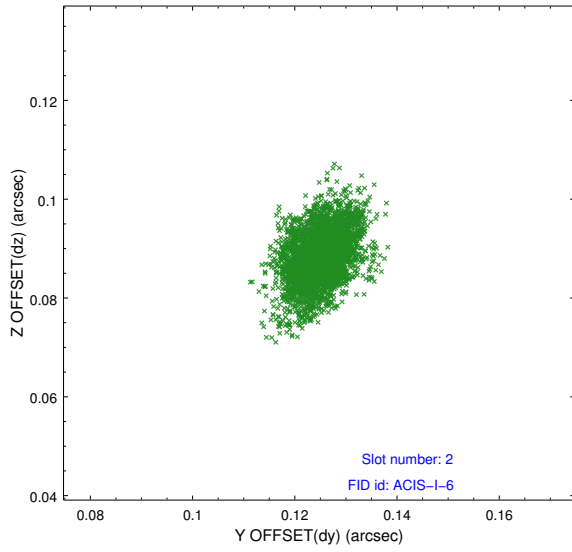
2.5.1 Slot 0



2.5.2 Slot 1



2.5.3 Slot 2



A Summary

A.1 Status

V&V Scientist	Jen Lauer
V&V Date (YYYY-MM-DD)	2012.05.01
V&V Edition	1
V&V Disposition and Status	OK
V&V Charge Time	14.6971001

A.2 Comments

Joint Proposal: NOAO. Roll preference met.