

# V&V Reference Report

## L2 ASCDS Version : 8.4.4

Observation 9526 - L2 Version 2  
Chandra X-Ray Center

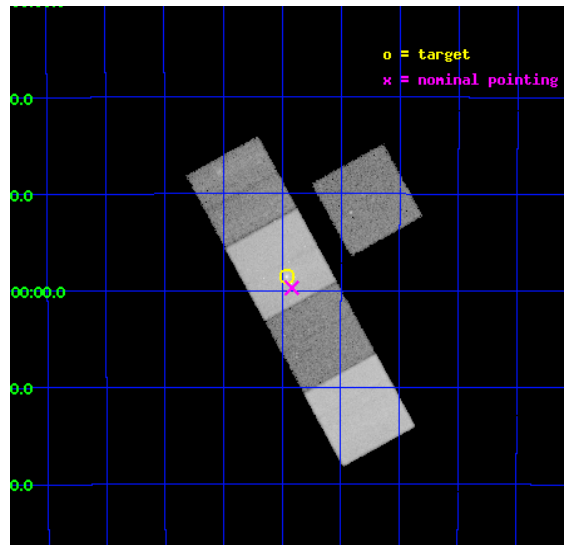
L2 Processing Date : May 12 2012

## Contents

<b>1</b>	<b>Front</b>	<b>2</b>
<b>2</b>	<b>OBI</b>	<b>3</b>
2.1	OBI . . . . .	3
2.1.1	Images . . . . .	3
2.1.2	Bias . . . . .	3
2.1.3	Parameters . . . . .	4
2.1.4	Events . . . . .	4
2.2	Compared Parameters . . . . .	5
2.3	Aspect . . . . .	6
2.4	Star Slots . . . . .	9
2.4.1	Slot 3 . . . . .	9
2.4.2	Slot 4 . . . . .	10
2.4.3	Slot 5 . . . . .	11
2.4.4	Slot 6 . . . . .	12
2.4.5	Slot 7 . . . . .	13
2.5	FID Slots . . . . .	14
2.5.1	Slot 0 . . . . .	14
2.5.2	Slot 1 . . . . .	15
2.5.3	Slot 2 . . . . .	16
<b>A</b>	<b>Summary</b>	<b>17</b>
A.1	Status . . . . .	17
A.2	Comments . . . . .	17

# 1 Front

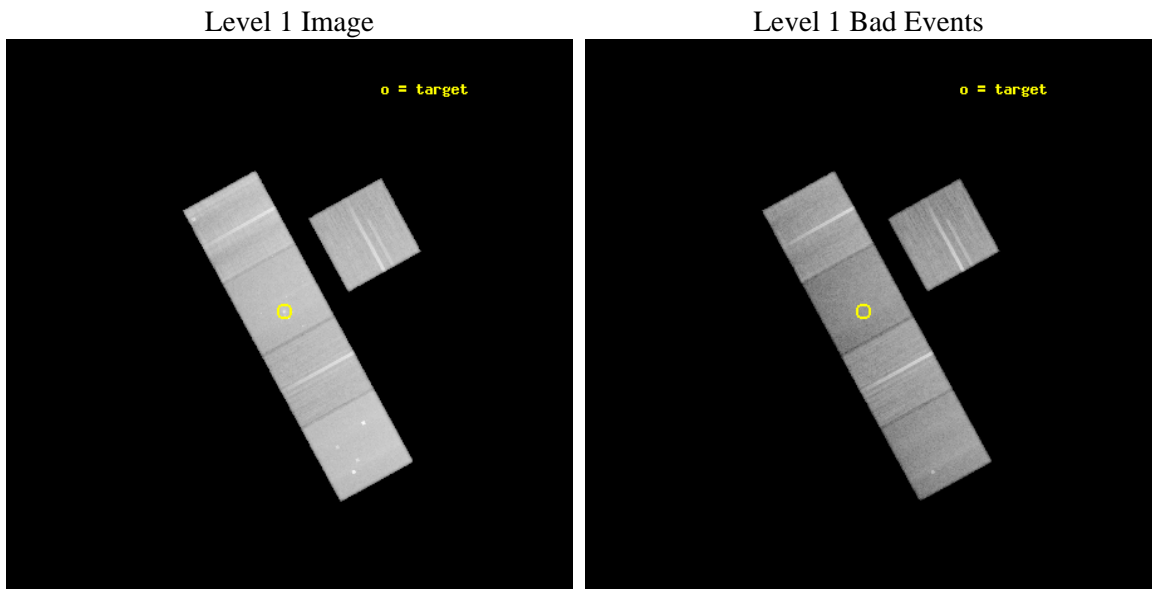
seq_num	600667	Sequence number
obs_id	9526	Observation id
title	Are the X-Ray Binaries in S0 Galaxies Different From Those in Ellipticals?	Proposal title
observer	Dr. CRAIG SARAZIN	Principal investigator
object	NGC1380	Source name
dtycycle	0	&#160
cycle	P	events from which exps? Prim/Second/Both
ra_targ	54.11375	Observer's specified target RA [deg]
dec_targ	-34.976028	Observer's specified target Dec [deg]
ra_nom	54.104220578966	Nominal RA [deg]
dec_nom	-34.995453520318	Nominal Dec [deg]
roll_nom	241.25926726037	Nominal Roll [deg]
revision	2	Processing version of data
ontime	42175.500324368	Sum of GTIs [s]
livetime	41624.446363479	Livetime [s]
ontime3	42169.218403757	Sum of GTIs [s]
ontime5	42175.500324368	Sum of GTIs [s]
ontime6	42169.218373835	Sum of GTIs [s]
ontime7	42175.500324368	Sum of GTIs [s]
ontime8	42169.218363822	Sum of GTIs [s]
l2events	497666	Number of level 2 events



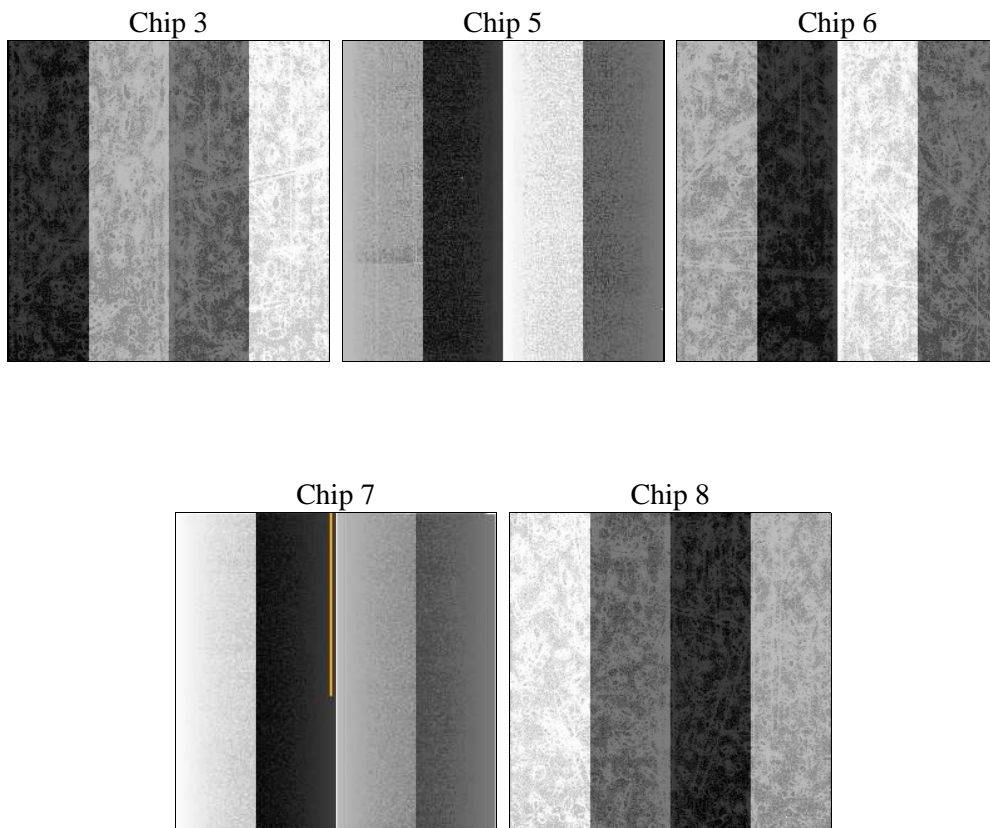
## 2 OBI

### 2.1 OBI

#### 2.1.1 Images



#### 2.1.2 Bias



### 2.1.3 Parameters

obi_num	0	Obi number	sched_exp_time	42000.000000	[s] Scheduled observation exposure time
ascdsver	8.4.4	Processing system revision	ontime	42175.500324368	Sum of GTIs [s]
caldbver	4.4.9	&#160	ontime3	42169.218403757	Sum of GTIs [s]
date	2012-05-12T02:01:12	Date and time of file creation	ontime5	42175.500324368	Sum of GTIs [s]
revision	2	Processing version of data	ontime6	42169.218373835	Sum of GTIs [s]
			ontime7	42175.500324368	Sum of GTIs [s]
			ontime8	42169.218363822	Sum of GTIs [s]
			l1events	1981143	Number of level 1 events

### 2.1.4 Events

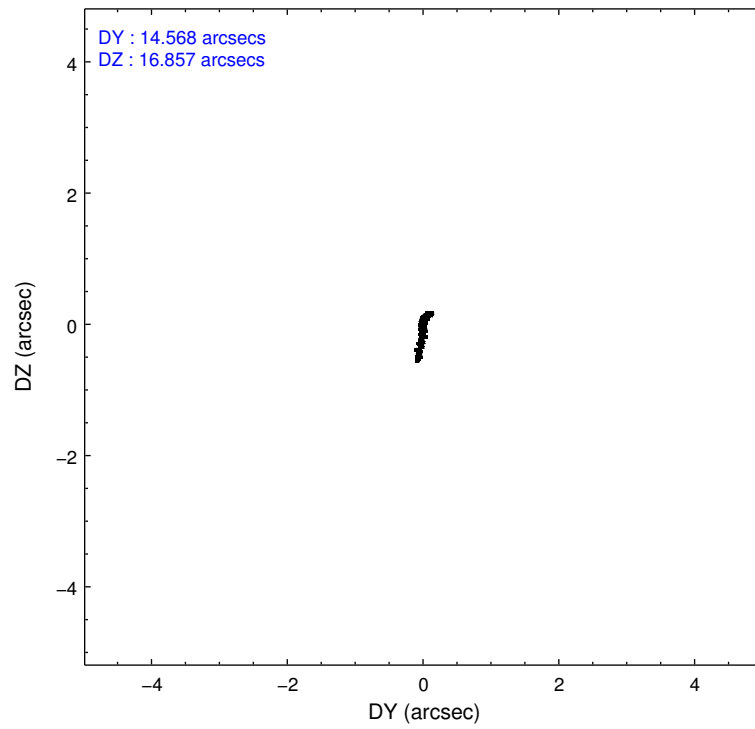
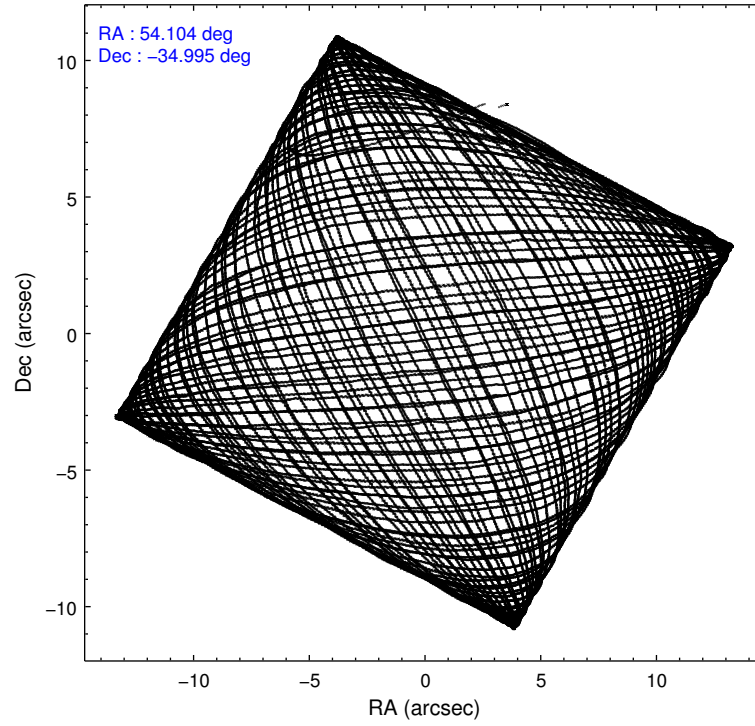
	ccd 3	ccd 5	ccd 6	ccd 7	ccd 8
level 1 events	329352	477071	348781	391040	434899
rejected events	297481	239659	312142	208663	326811
rejected %	90%	50%	89%	53%	75%

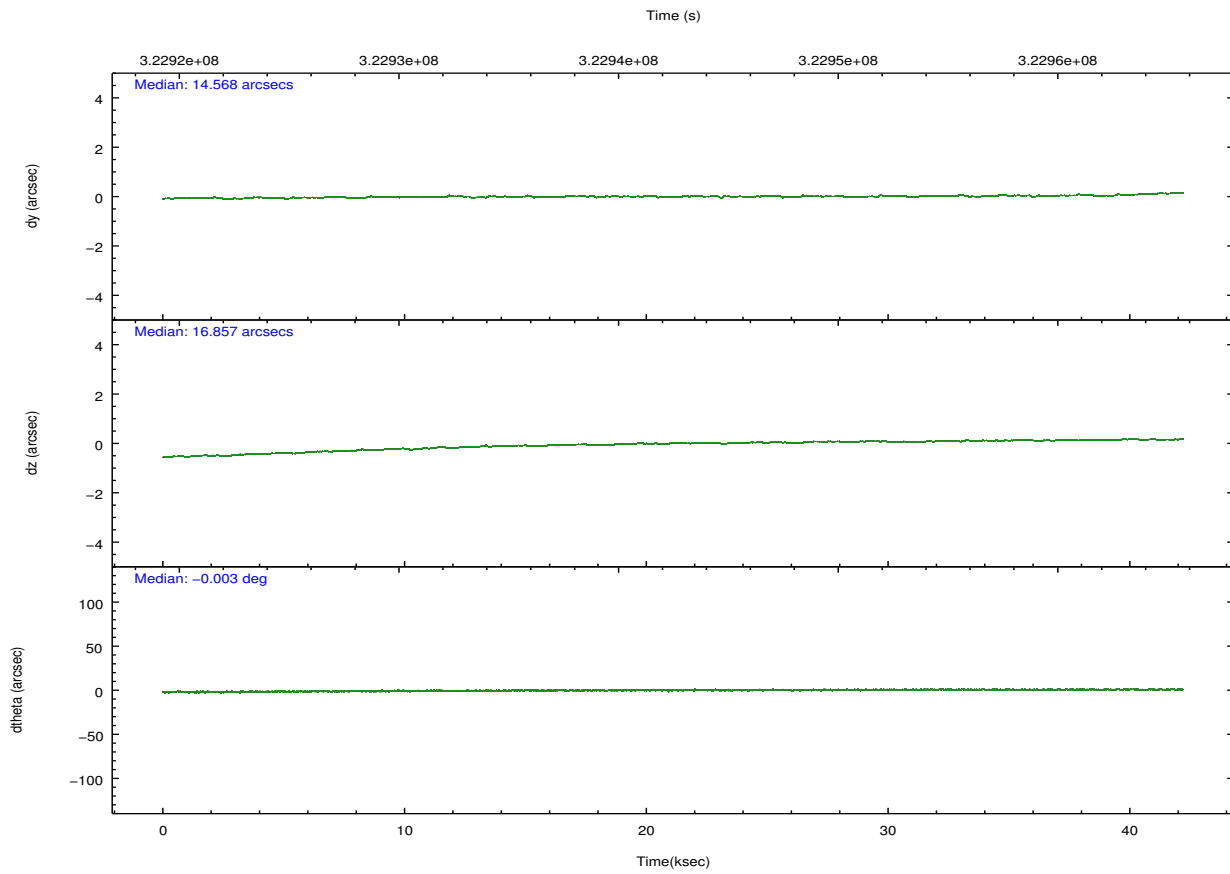
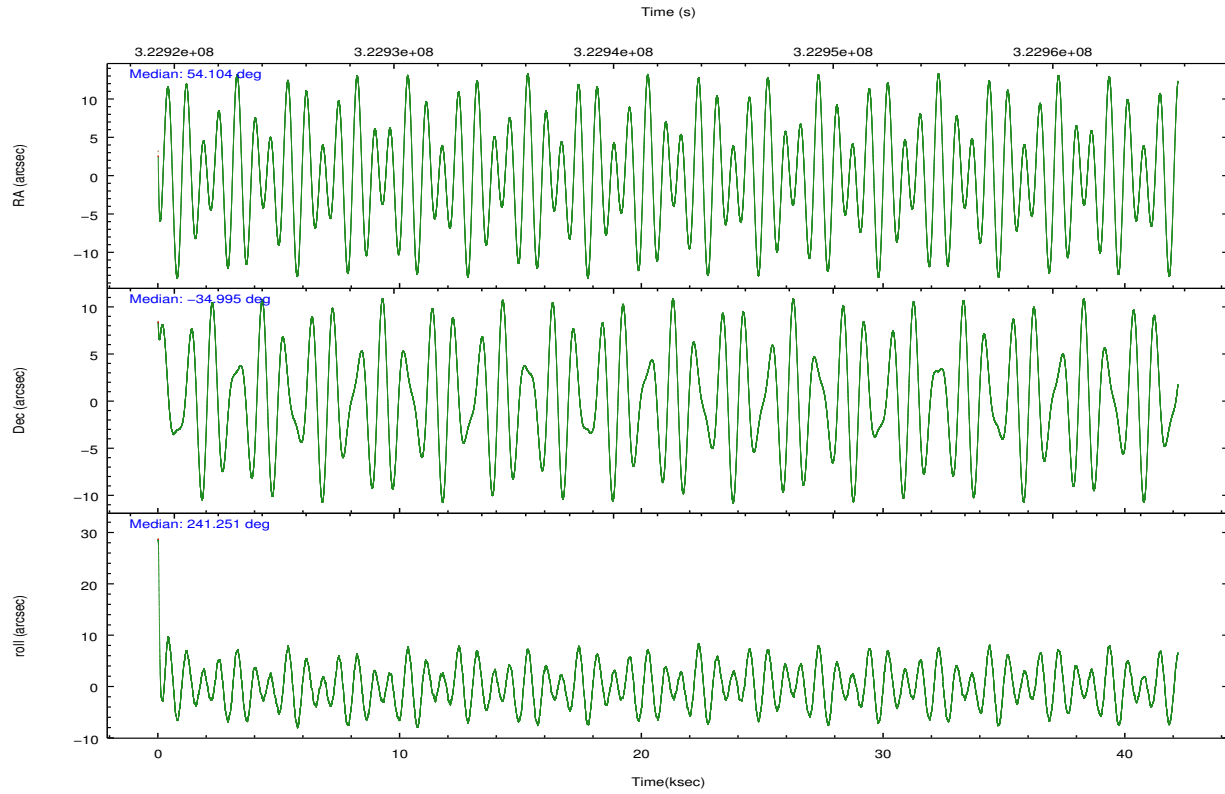
	ccd 3	ccd 5	ccd 6	ccd 7	ccd 8
grade 0 events	11485	23275	13328	19128	33787
	3%	4%	3%	4%	7%
grade 1 events	200	820	161	499	343
	0%	0%	0%	0%	0%
grade 2 events	6960	71475	8052	37502	24640
	2%	14%	2%	9%	5%
grade 3 events	3547	10315	3901	16960	10739
	1%	2%	1%	4%	2%
grade 4 events	3590	9815	3825	16744	10340
	1%	2%	1%	4%	2%
grade 5 events	13701	37533	13929	40546	20016
	4%	7%	3%	10%	4%
grade 6 events	6352	123072	7602	92439	28829
	1%	25%	2%	23%	6%
grade 7 events	283517	200766	297983	167222	306205
	86%	42%	85%	42%	70%

## 2.2 Compared Parameters

Parameter	Planned	Actual	Parameter	Planned	Actual
Instrument	ACIS	ACIS	Obspar format version number	7	7
Detector	ACIS-35678	ACIS-35678	Obspar file type	PREDICTED	ACTUAL
Grating	NONE	NONE	Obspar update status	NONE	UPDATED
Data mode	VFAINT	VFAINT	CCD I0 on	N	N
Observation mode	POINTING	POINTING	CCD I1 on	N	N
[deg] Pointing RA	54.103034	54.10422057896632	CCD I2 on	N	N
[deg] Pointing Dec	-34.968146	-34.99545352031848	CCD I3 on	O1	Y
[deg] Pointing Roll	241.101954	241.2592672603691	CCD S0 on	N	N
[mm] SIM focus pos	-0.684267	-0.6828225247311905	CCD S1 on	O2	Y
[mm] SIM defocus	0	0.001444936568705701	CCD S2 on	O3	Y
[mm] SIM translation stage pos	-190.132523	-190.1425803651734	CCD S3 on	Y	Y
[mm] SIM translation stage offset	0	0.01005778216563158	CCD S4 on	O4	Y
[s] Observation start time (MET)	322921573.184000	322920531.02395	CCD S5 on	N	N
Observation start date	2008-03-26T12:25:08	2008-03-26T12:08:51	Number of optional ACIS chips dropped	0	0
[s] Observation end time (MET)	322963573.184000	322964767.4636	On-chip summing requested	N	N
Observation end date	2008-03-27T00:05:08	2008-03-27T00:26:07	Subarray requested	NONE	NONE
Read mode	TIMED	TIMED	Alternating exposures requested	N	N
			[s] Primary exposure time	0.000000	3.1

## 2.3 Aspect



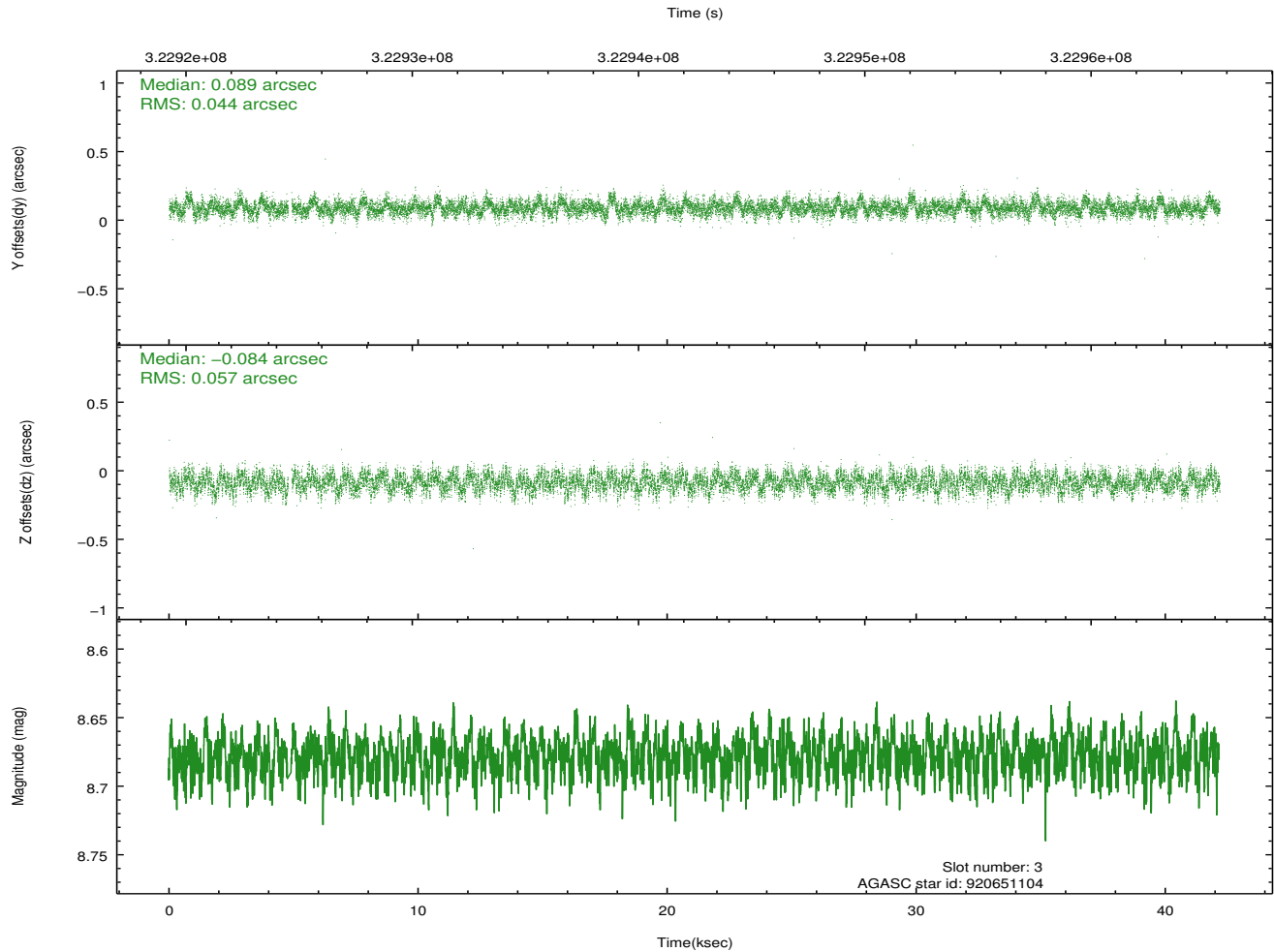
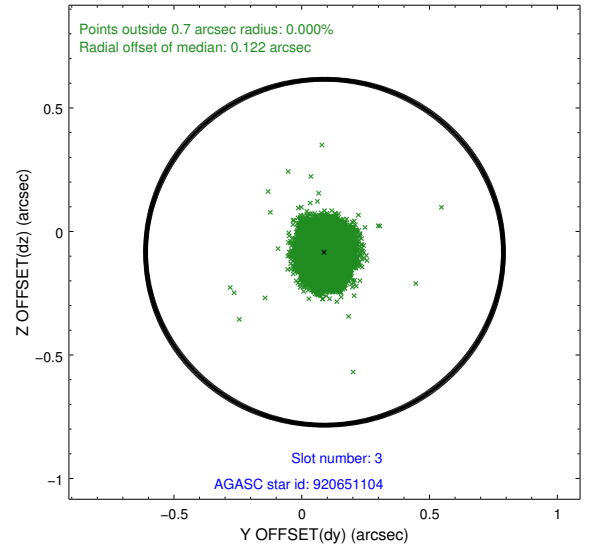
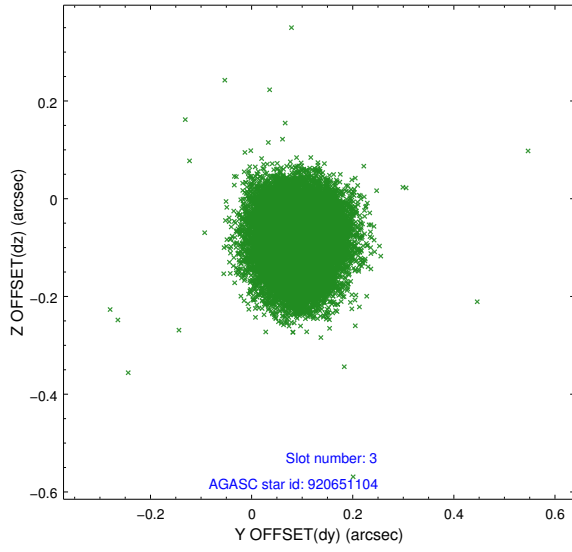


### Slot Statistics

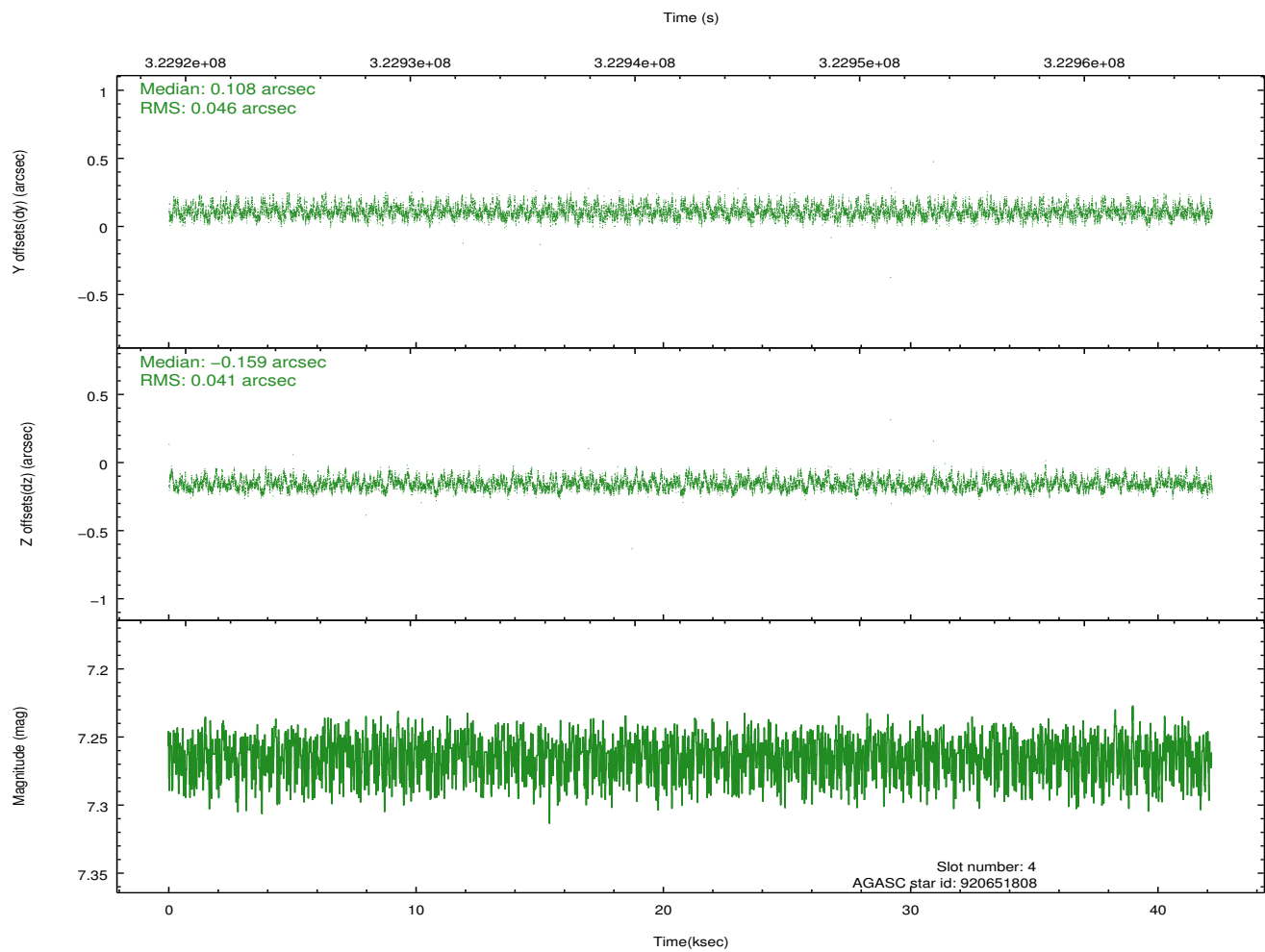
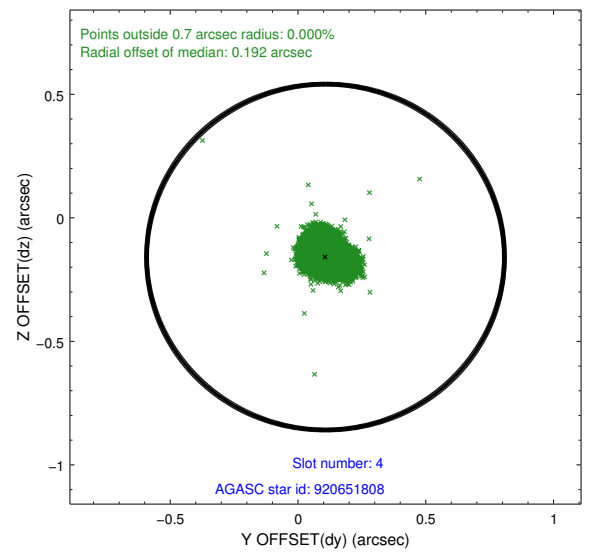
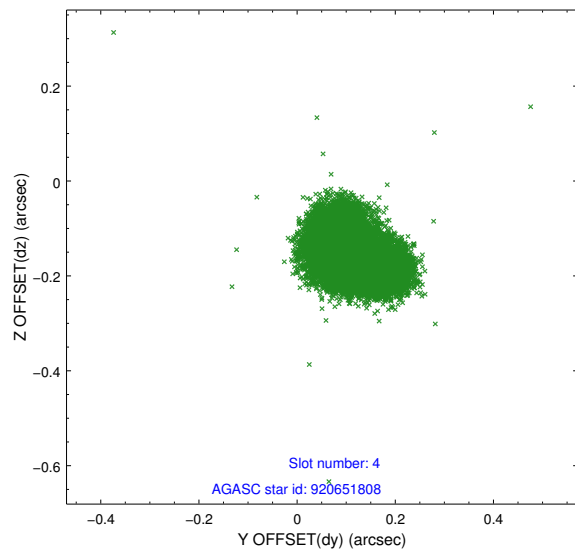
slot	status	id	mag	n_pts	med_dy	med_dz	dr1	dr2	ra	dec	mean_y	mean_z
0	FID	ACIS-S-2	7.09	10288	-0.066	-0.044	0.010	0.016	0.000000	0.000000	-767.62	-1738.19
1	FID	ACIS-S-4	7.18	10286	0.185	0.044	0.008	0.014	0.000000	0.000000	2145.93	170.33
2	FID	ACIS-S-5	7.22	10286	-0.150	0.009	0.009	0.015	0.000000	0.000000	-1820.51	164.03
3	GUIDE	920651104	8.68	20492	0.089	-0.084	0.077	0.122	53.495721	-34.796351	331.82	-1867.58
4	GUIDE	920651808	7.26	20572	0.108	-0.159	0.066	0.106	53.624364	-34.832415	259.85	-1472.38
5	GUIDE	921571056	8.56	20572	-0.317	0.263	0.082	0.132	54.339011	-34.649674	-1340.67	58.71
6	GUIDE	921572720	8.74	20565	0.094	0.082	0.070	0.109	54.127171	-34.789534	-596.97	-247.72
7	GUIDE	921575736	8.52	20568	0.023	-0.106	0.077	0.120	54.586331	-34.827401	-1130.63	1007.48

## 2.4 Star Slots

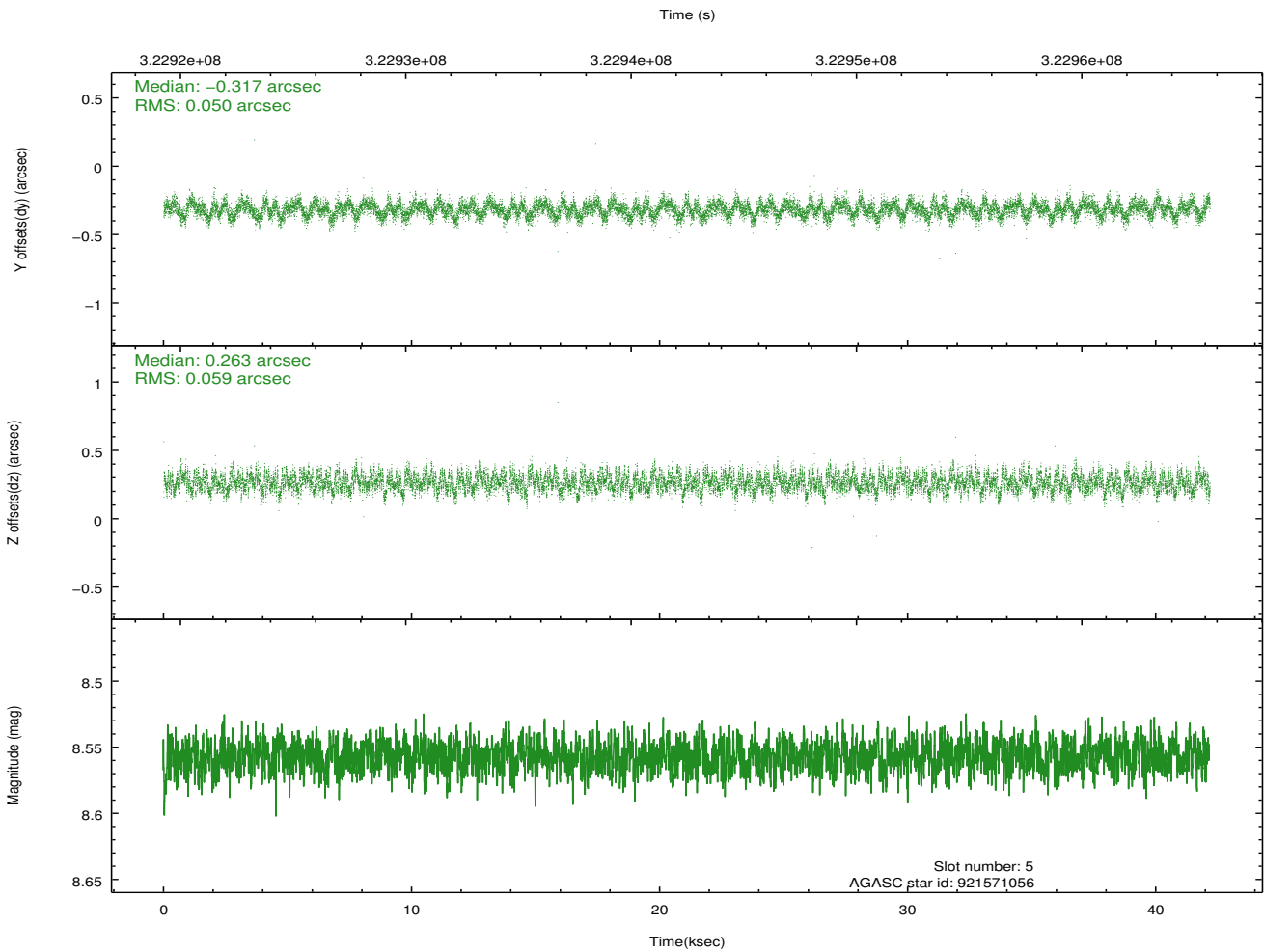
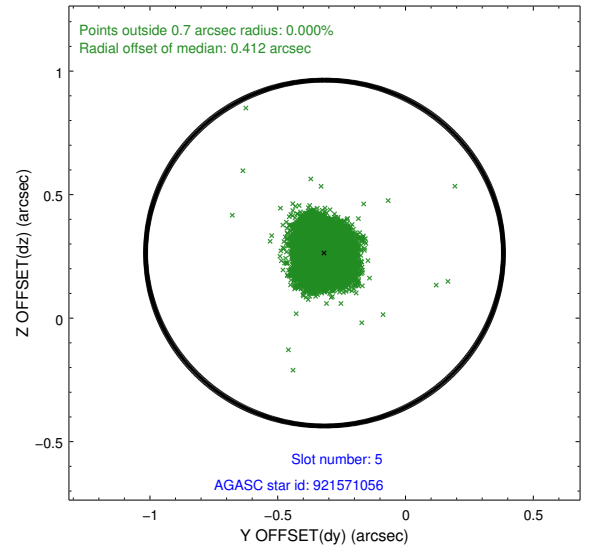
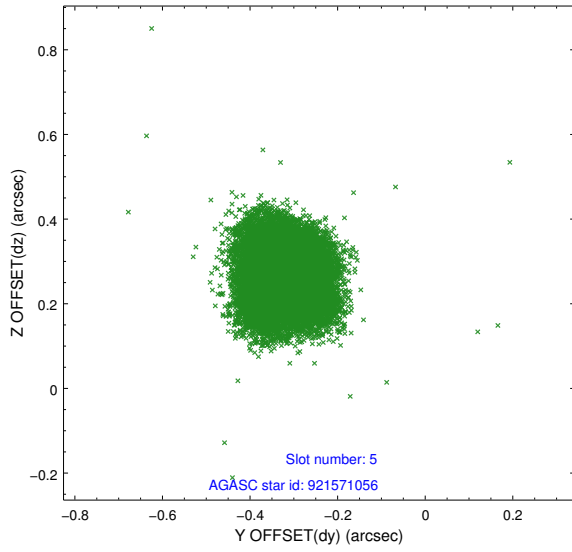
### 2.4.1 Slot 3



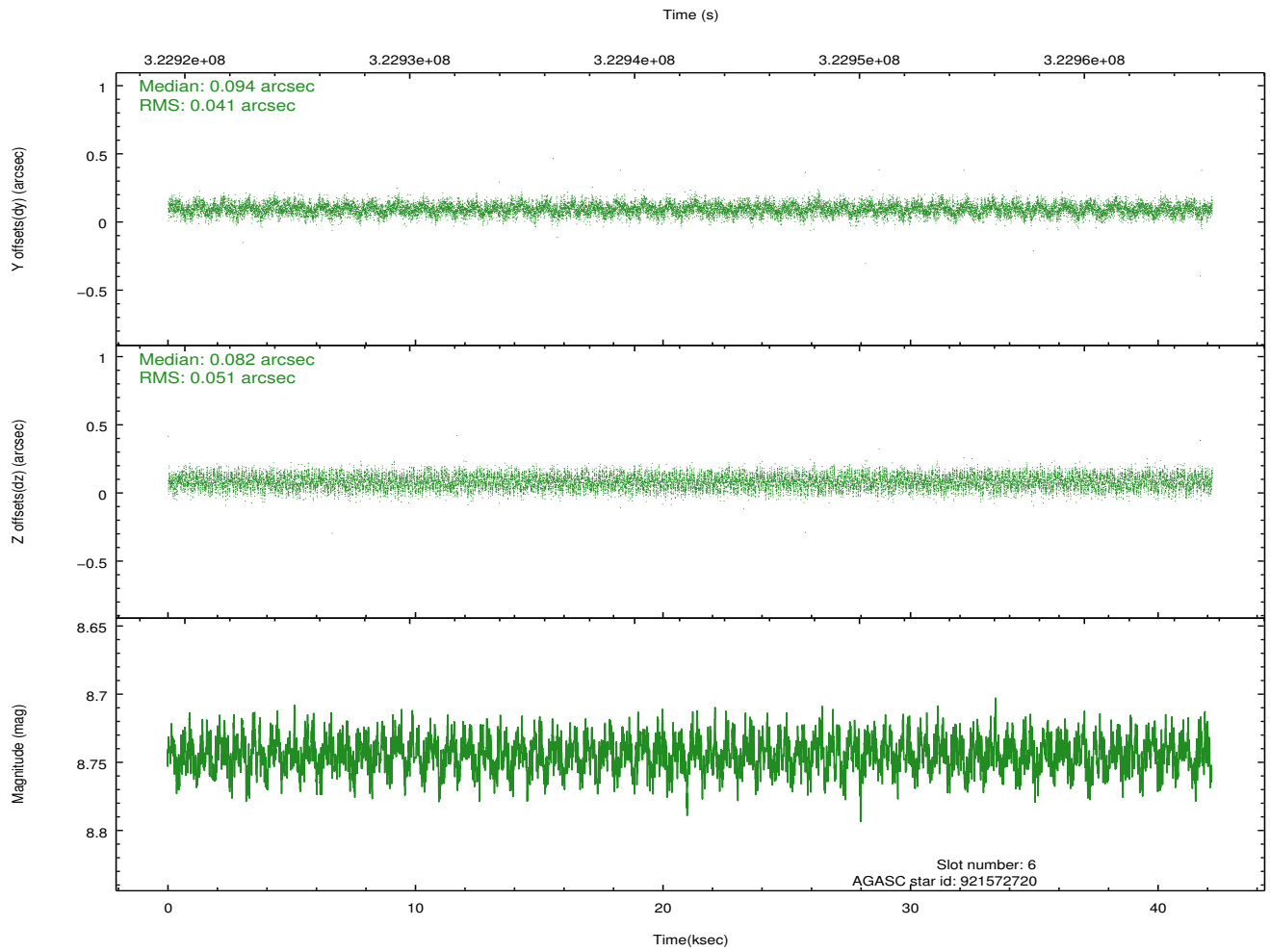
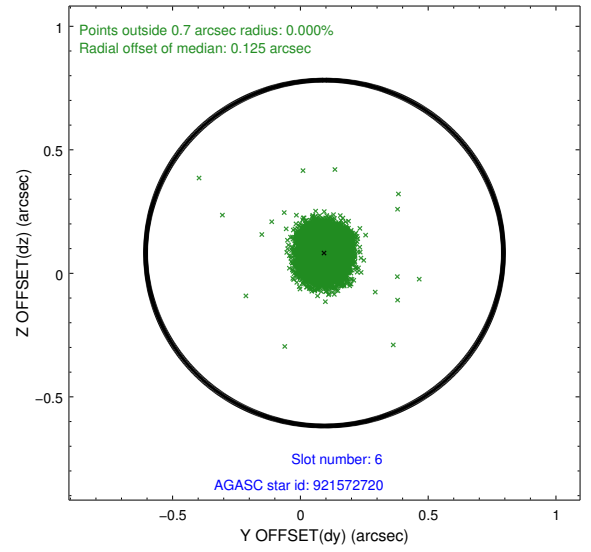
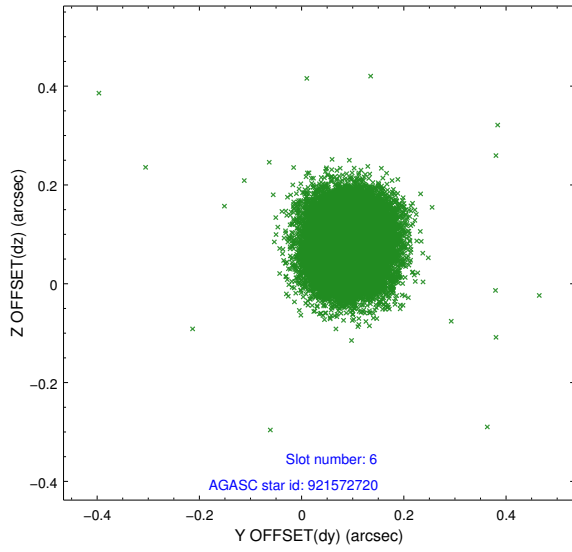
## 2.4.2 Slot 4



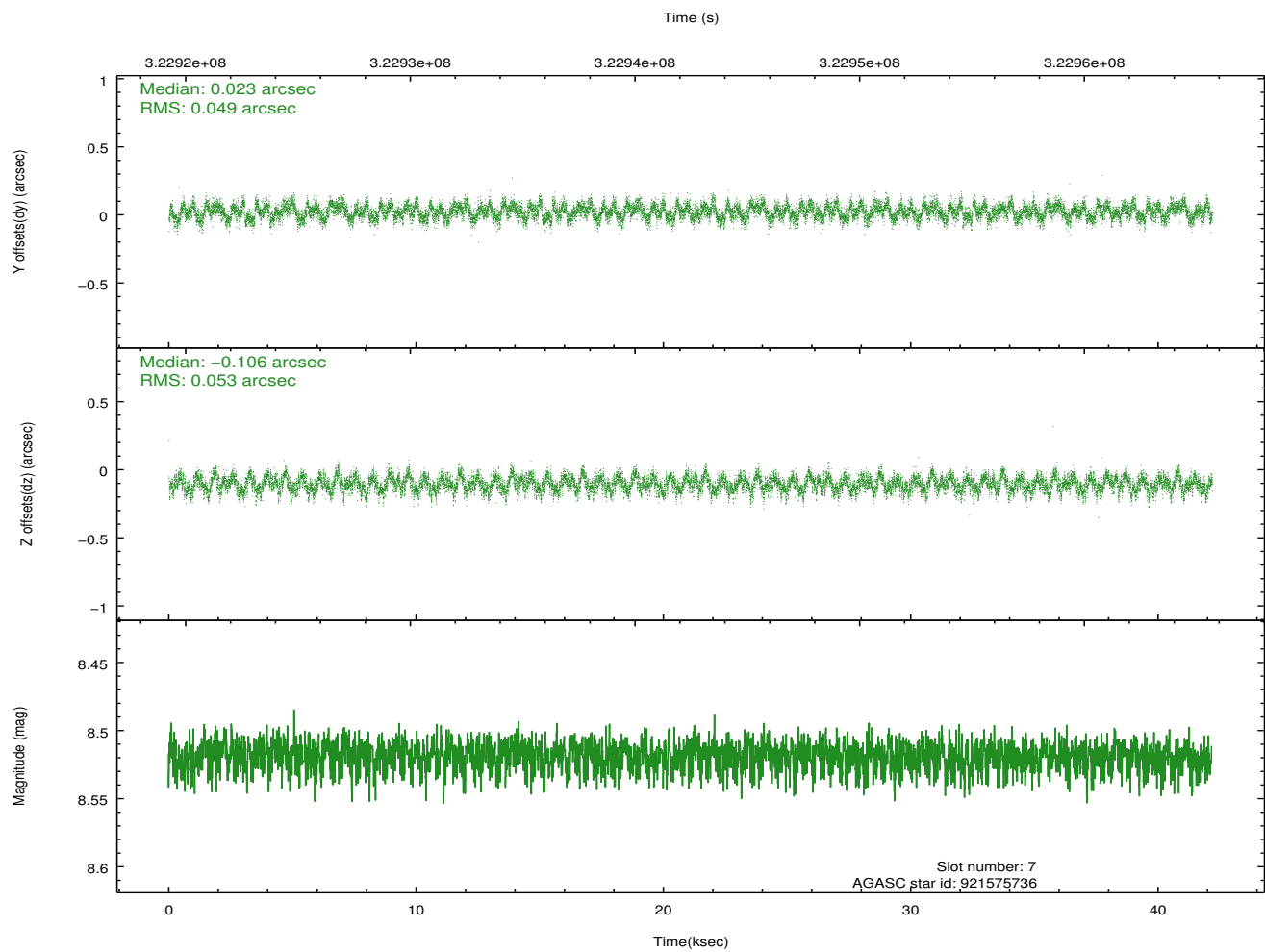
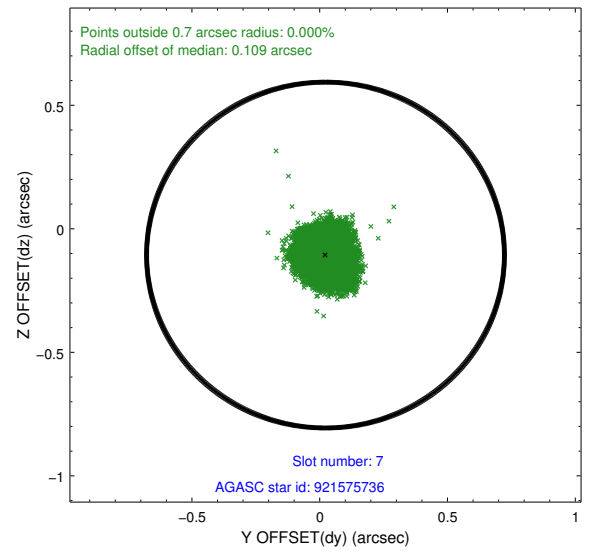
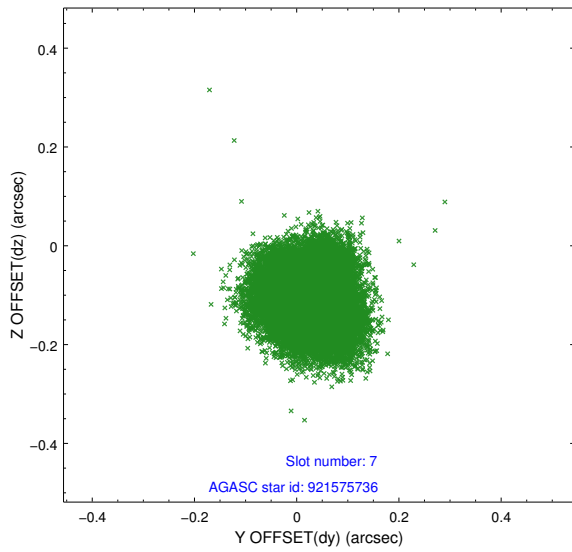
### 2.4.3 Slot 5



### 2.4.4 Slot 6

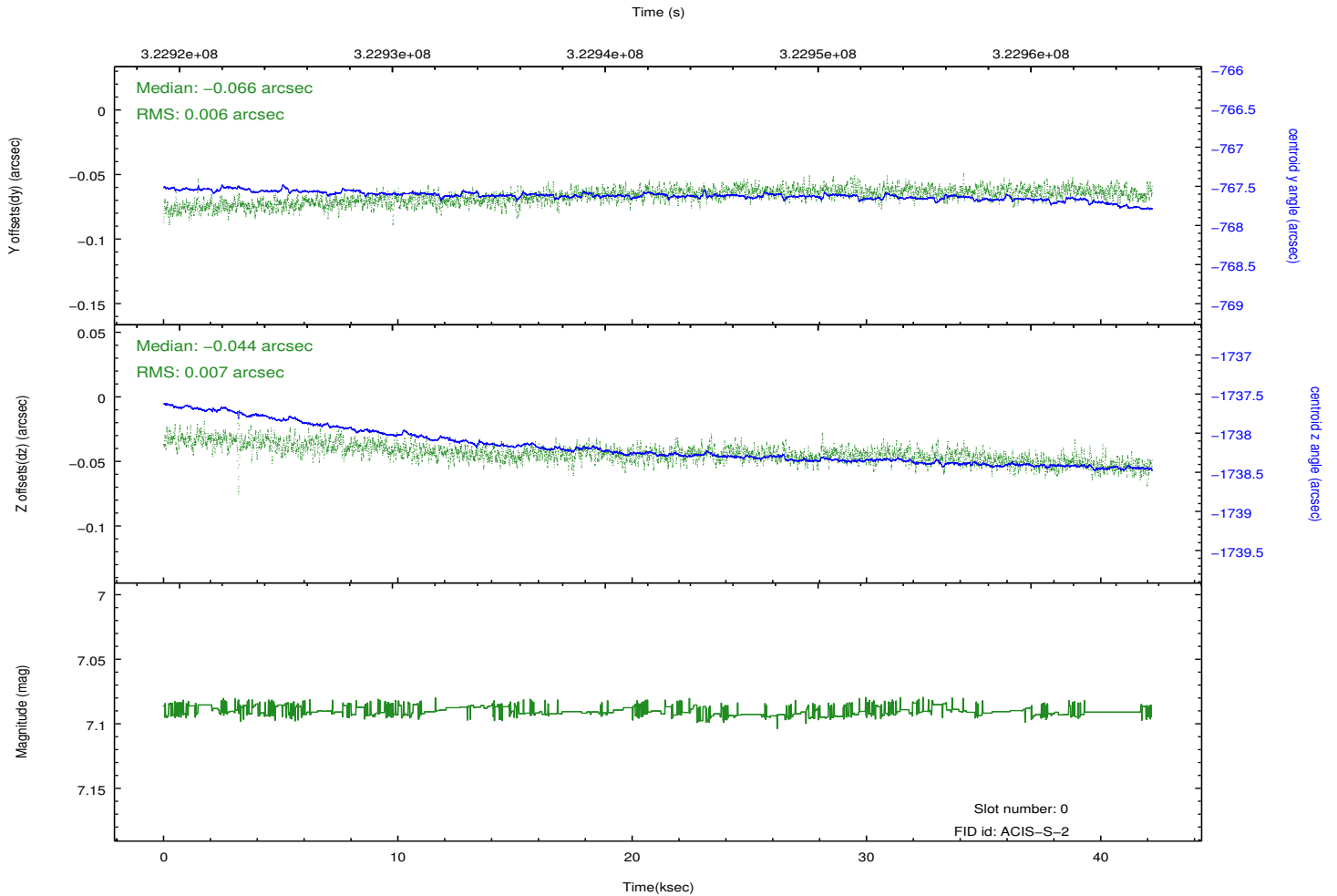
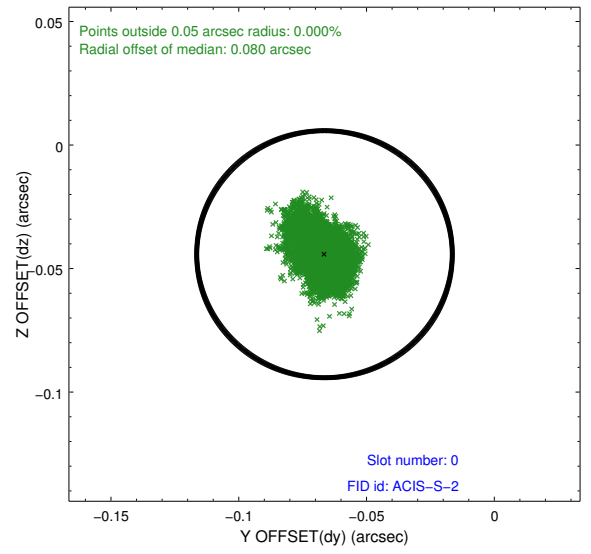
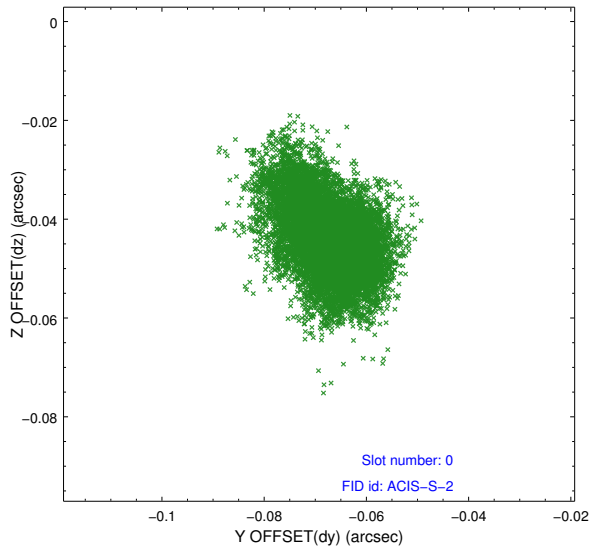


## 2.4.5 Slot 7

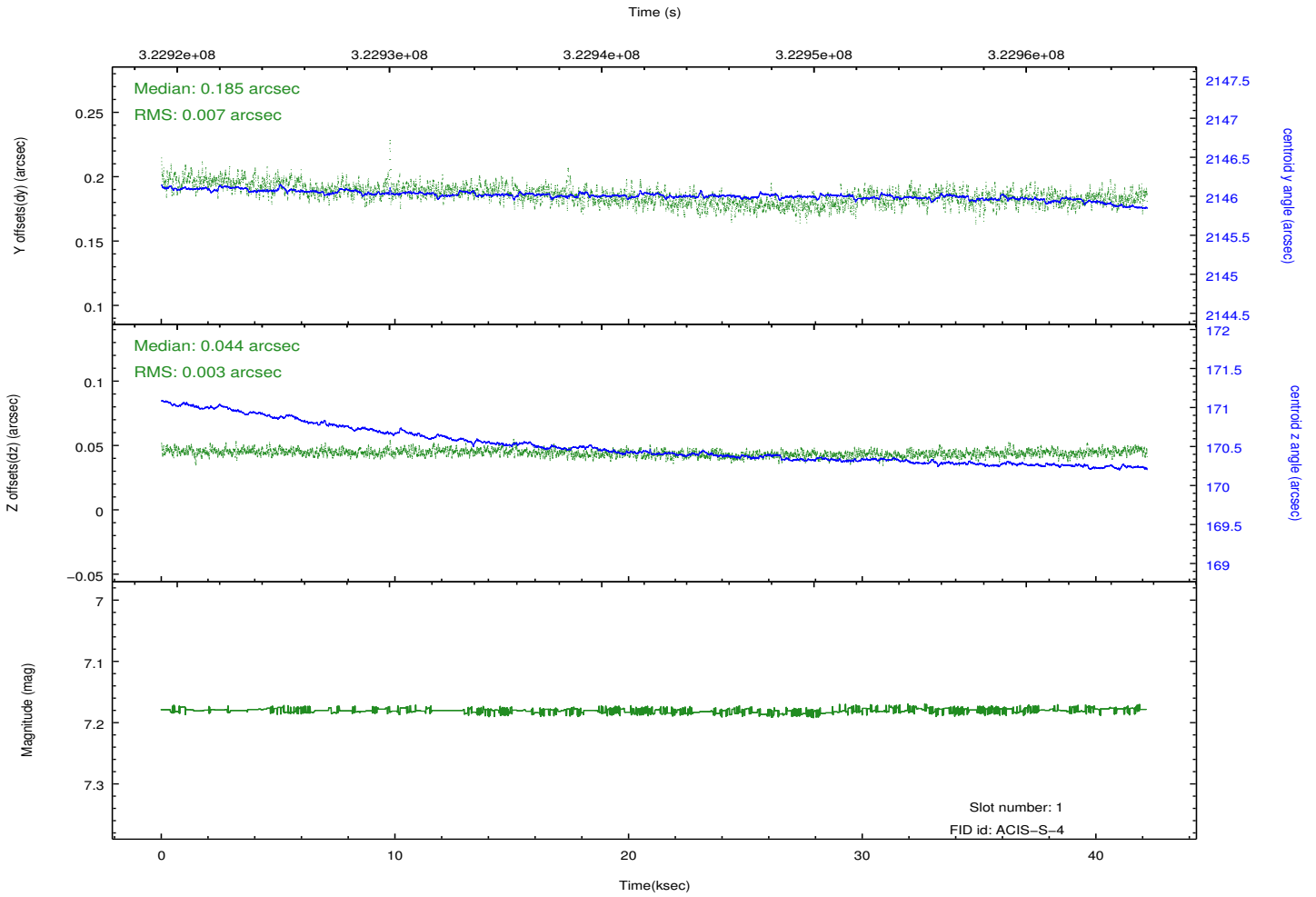
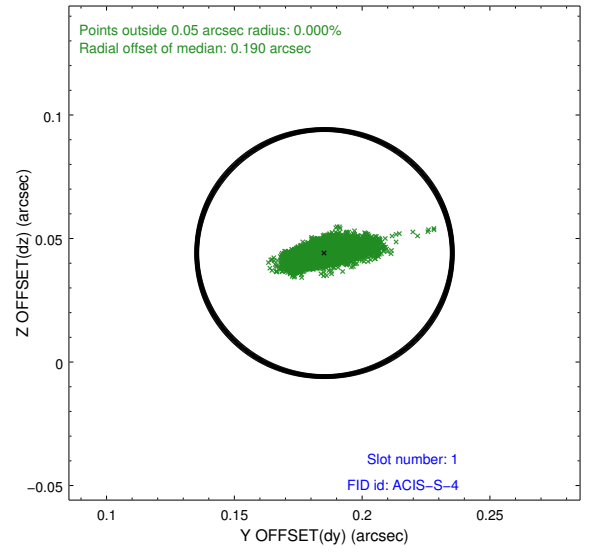
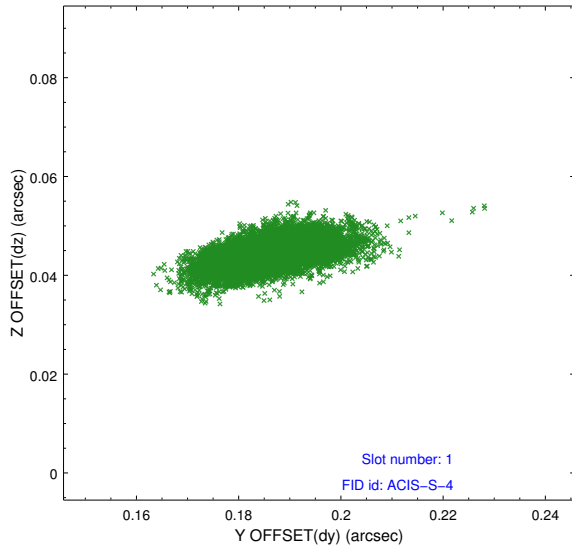


## 2.5 FID Slots

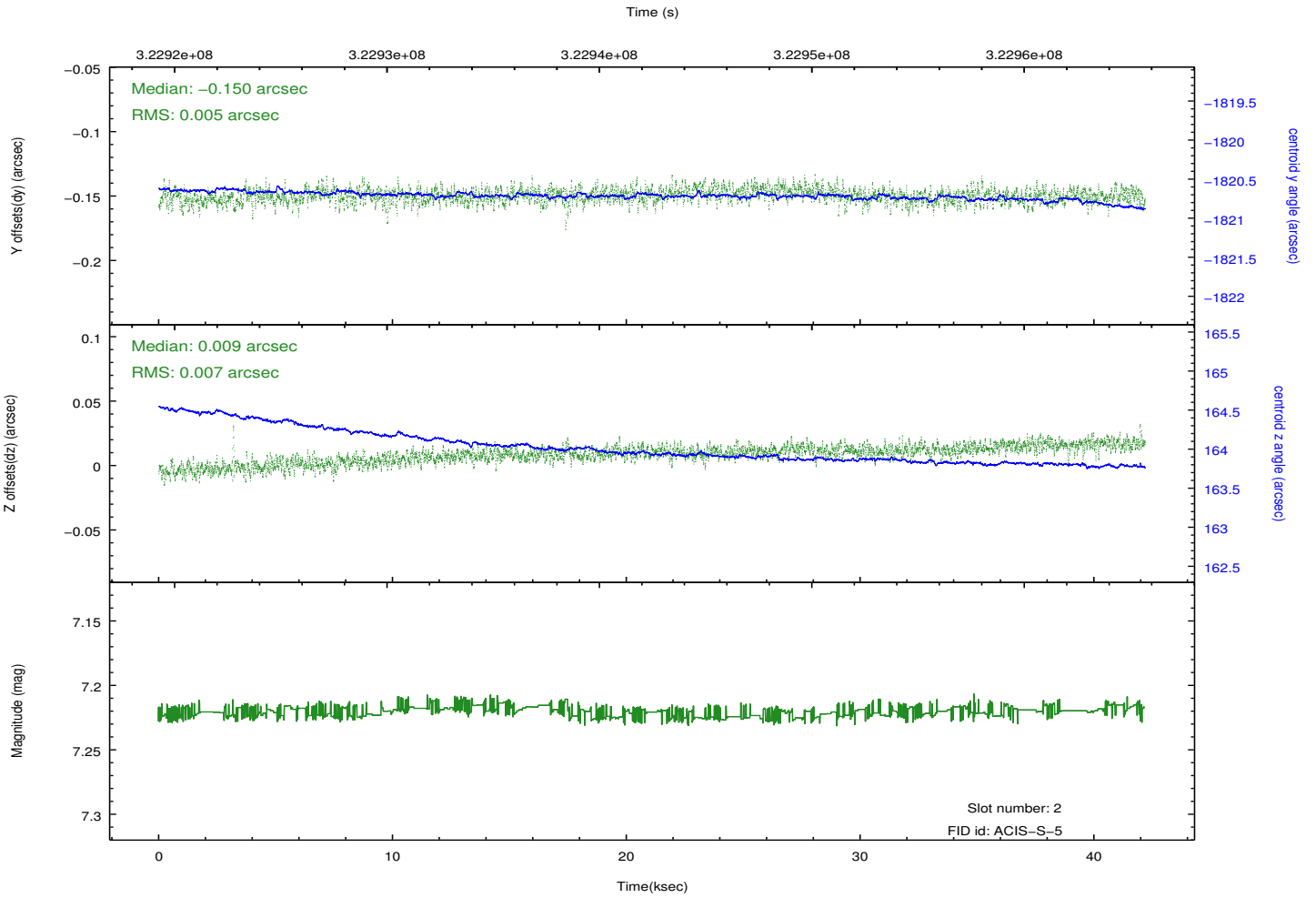
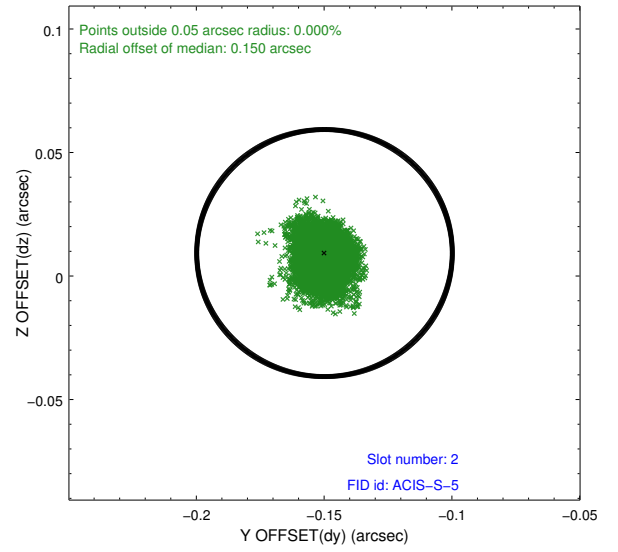
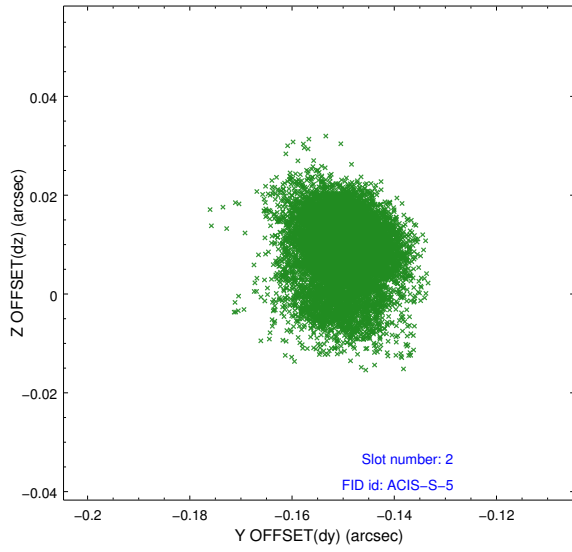
### 2.5.1 Slot 0



## 2.5.2 Slot 1



### 2.5.3 Slot 2



## **A Summary**

### **A.1 Status**

V&V Scientist	Beth Sundheim
V&V Date (YYYY-MM-DD)	2012.05.15
V&V Edition	1
V&V Disposition and Status	OK
V&V Charge Time	42.1755003

### **A.2 Comments**