

V&V Reference Report

L2 ASCDS Version : 8.4.4

Observation 9556 - L2 Version 2
Chandra X-Ray Center

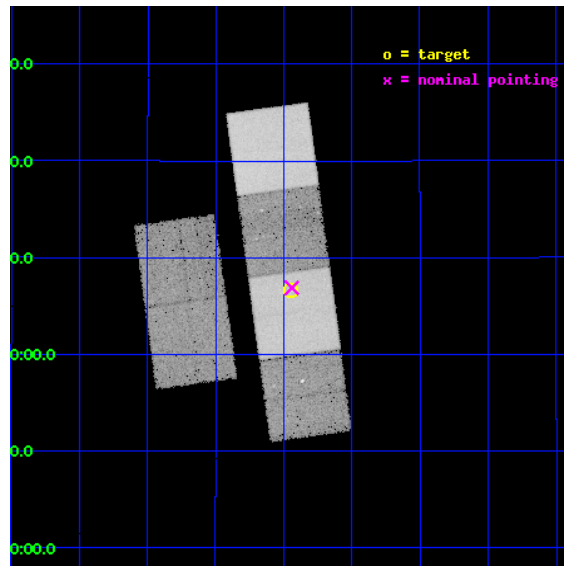
L2 Processing Date : May 8 2012

Contents

1	Front	2
2	OBI	3
2.1	OBI	3
2.1.1	Images	3
2.1.2	Bias	3
2.1.3	Parameters	4
2.1.4	Events	4
2.2	Compared Parameters	5
2.3	Aspect	6
2.4	Star Slots	9
2.4.1	Slot 3	9
2.4.2	Slot 4	10
2.4.3	Slot 5	11
2.4.4	Slot 6	12
2.4.5	Slot 7	13
2.5	FID Slots	14
2.5.1	Slot 0	14
2.5.2	Slot 1	15
2.5.3	Slot 2	16
A	Summary	17
A.1	Status	17
A.2	Comments	17

1 Front

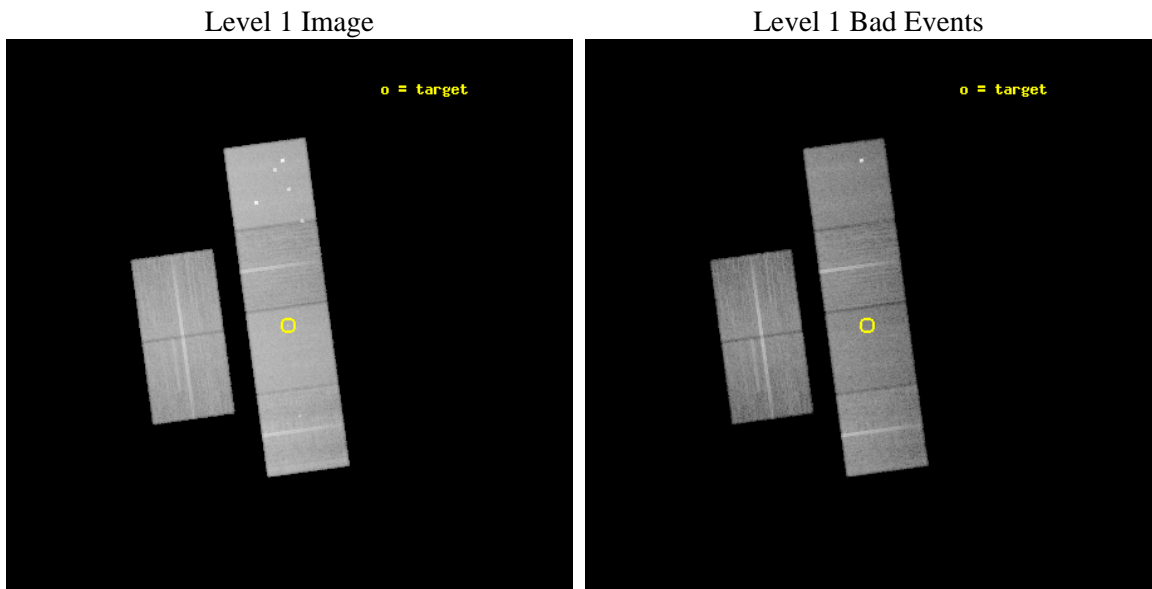
seq_num	600697	Sequence number
obs_id	9556	Observation id
title	NGC 3599: The nearest and most recently discovered tidal disruption event	Proposal title
observer	Ms. Pilar Esquej	Principal investigator
object	NGC 3599	Source name
dtcycle	0	
cycle	P	events from which exps? Prim/Second/Both
ra_targ	168.862083	Observer's specified target RA [deg]
dec_targ	18.110278	Observer's specified target Dec [deg]
ra_nom	168.85999089843	Nominal RA [deg]
dec_nom	18.114696611003	Nominal Dec [deg]
roll_nom	82.239264945224	Nominal Roll [deg]
revision	2	Processing version of data
ontime	20159.999924958	Sum of GTIs [s]
livetime	19904.721867013	Livetime [s]
ontime2	20159.999924958	Sum of GTIs [s]
ontime3	20156.758924663	Sum of GTIs [s]
ontime5	20159.999924958	Sum of GTIs [s]
ontime6	20159.999924958	Sum of GTIs [s]
ontime7	20159.999924958	Sum of GTIs [s]
ontime8	20159.999924958	Sum of GTIs [s]
l2events	321564	Number of level 2 events



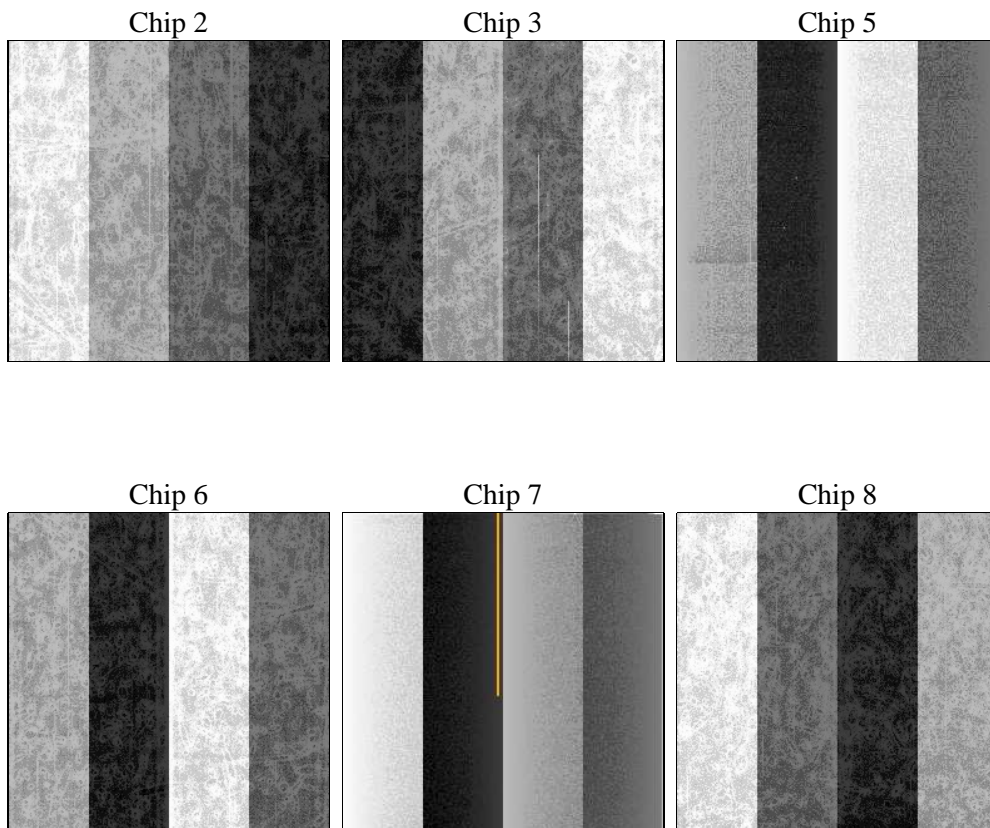
2 OBI

2.1 OBI

2.1.1 Images



2.1.2 Bias



2.1.3 Parameters

obi_num	0	Obi number	sched_exp_time	20000.000000	[s] Scheduled observation exposure time
ascdsver	8.4.4	Processing system revision	ontime	20159.999924958	Sum of GTIs [s]
caldbver	4.4.9	 	ontime2	20159.999924958	Sum of GTIs [s]
date	2012-05-08T14:46:44	Date and time of file creation	ontime3	20156.758924663	Sum of GTIs [s]
revision	2	Processing version of data	ontime5	20159.999924958	Sum of GTIs [s]
			ontime6	20159.999924958	Sum of GTIs [s]
			ontime7	20159.999924958	Sum of GTIs [s]
			ontime8	20159.999924958	Sum of GTIs [s]
			l1events	1434681	Number of level 1 events

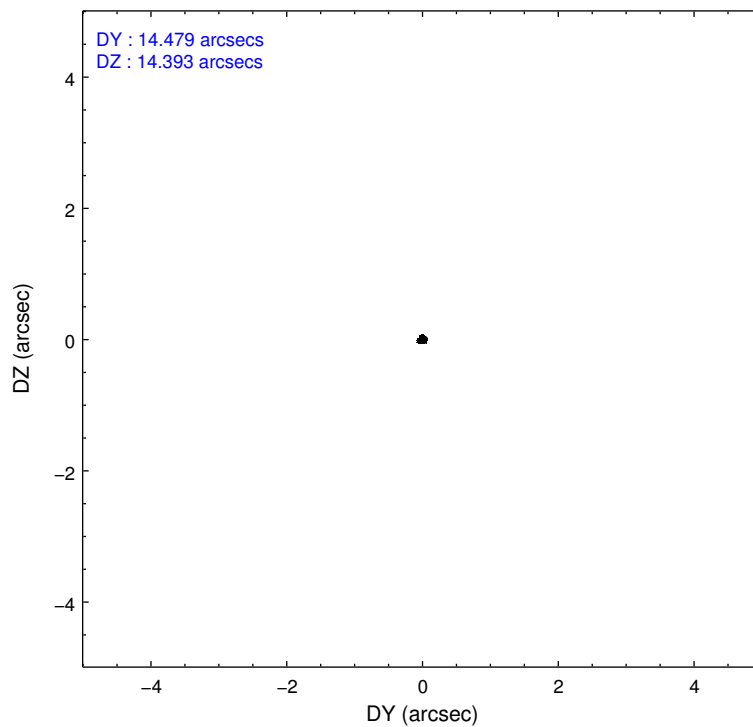
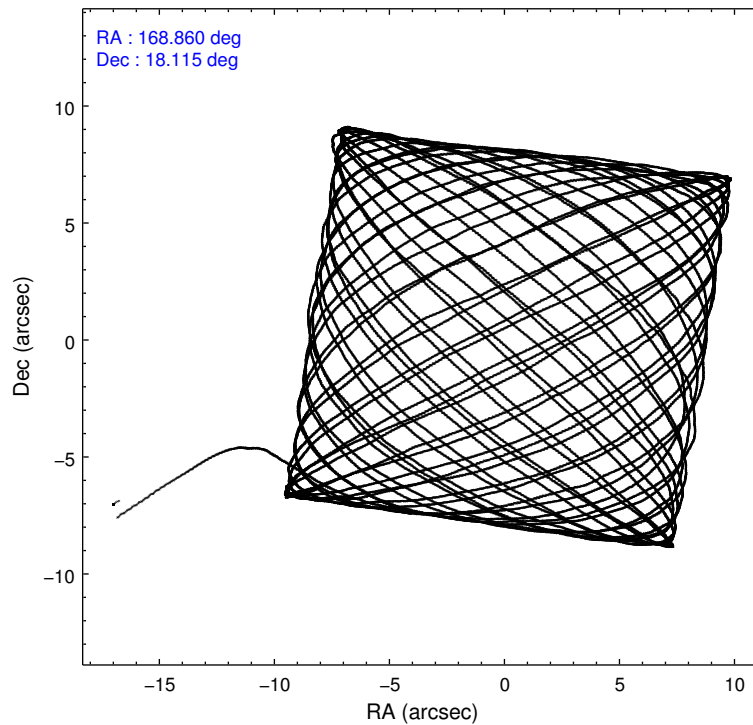
2.1.4 Events

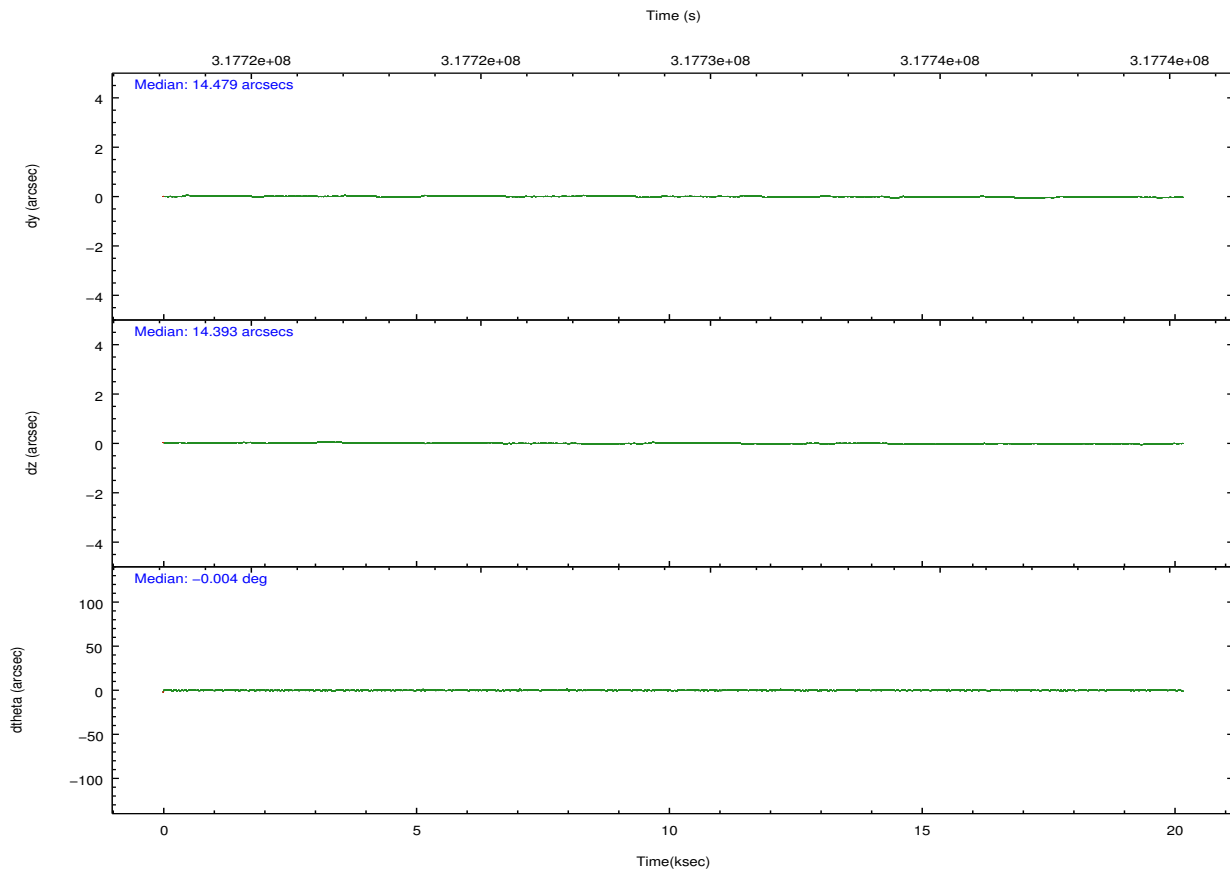
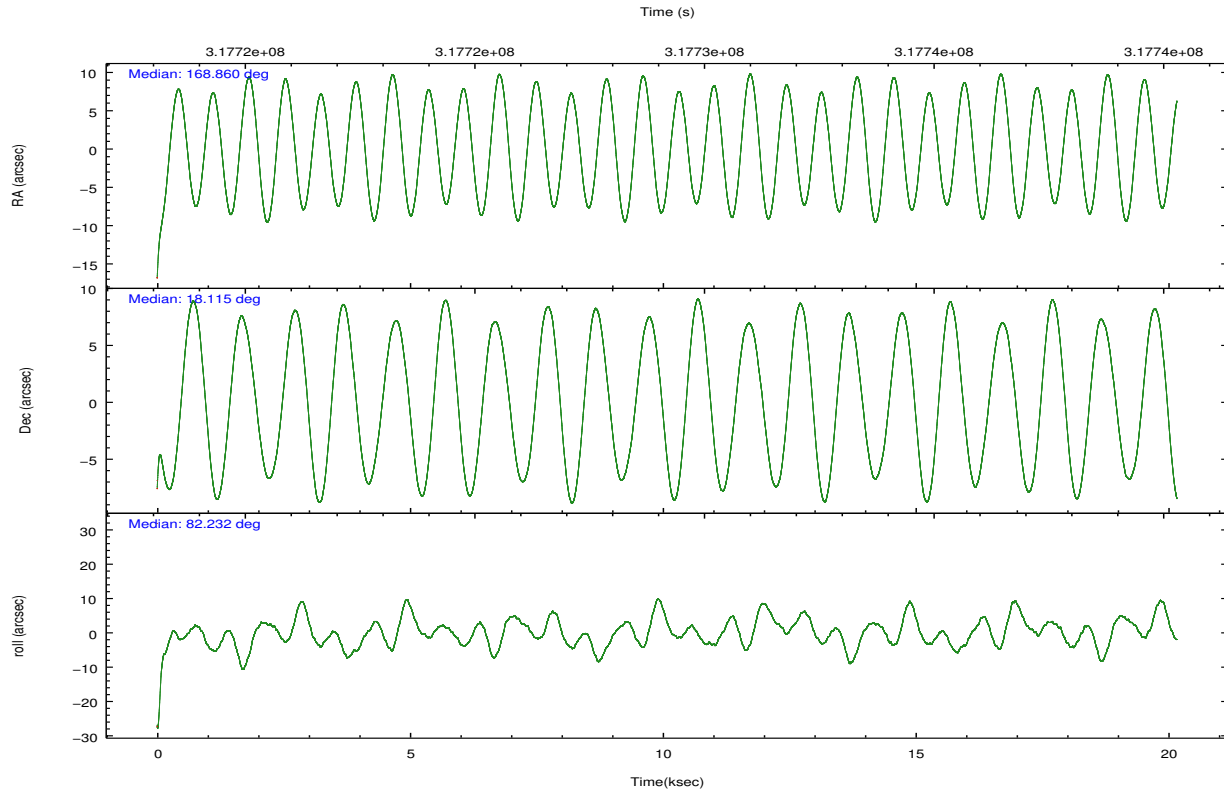
	ccd 2	ccd 3	ccd 5	ccd 6	ccd 7	ccd 8		ccd 2	ccd 3	ccd 5	ccd 6	ccd 7	ccd 8
level 1 events	201774	192201	313745	200831	272890	253240	grade 0 events	9335	9997	19134	9278	9474	18342
rejected events	179413	168986	168618	177049	160907	196702		4%	5%	6%	4%	3%	7%
rejected %	88%	87%	53%	88%	58%	77%	grade 1 events	146	131	458	109	281	216
								0%	0%	0%	0%	0%	0%
							grade 2 events	4964	4755	42557	5265	22914	12970
								2%	2%	13%	2%	8%	5%
							grade 3 events	2147	2248	5114	2203	9284	5859
								1%	1%	1%	1%	3%	2%
							grade 4 events	2125	2254	4283	2173	9274	5345
								1%	1%	1%	1%	3%	2%
							grade 5 events	8143	9158	22583	9212	25589	12445
								4%	4%	7%	4%	9%	4%
							grade 6 events	3944	4131	75102	5026	61830	14378
								1%	2%	23%	2%	22%	5%
							grade 7 events	170970	159527	144514	167565	134244	183685
								84%	83%	46%	83%	49%	72%

2.2 Compared Parameters

Parameter	Planned	Actual	Parameter	Planned	Actual
Instrument	ACIS	ACIS	Obspar format version number	7	7
Detector	ACIS-235678	ACIS-235678	Obspar file type	PREDICTED	ACTUAL
Grating	NONE	NONE	Obspar update status	NONE	UPDATED
Data mode	FAINT	FAINT	CCD I0 on	N	N
Observation mode	POINTING	POINTING	CCD I1 on	N	N
[deg] Pointing RA	168.871264	168.8599908984273	CCD I2 on	O1	Y
[deg] Pointing Dec	18.089540	18.11469661100346	CCD I3 on	O2	Y
[deg] Pointing Roll	82.079148	82.23926494522431	CCD S0 on	N	N
[mm] SIM focus pos	-0.684267	-0.6828225247311905	CCD S1 on	Y	Y
[mm] SIM defocus	0	0.001444936568705701	CCD S2 on	Y	Y
[mm] SIM translation stage pos	-190.132523	-190.1400660498719	CCD S3 on	Y	Y
[mm] SIM translation stage offset	0	0.00754346686406393	CCD S4 on	Y	Y
[s] Observation start time (MET)	317719260.184000	317718122.25876	CCD S5 on	N	N
Observation start date	2008-01-26T07:19:55	2008-01-26T07:02:02	Number of optional ACIS chips dropped	0	0
[s] Observation end time (MET)	317739260.184000	317740256.62233	On-chip summing requested	N	N
Observation end date	2008-01-26T12:53:15	2008-01-26T13:10:56	Subarray requested	NONE	NONE
Read mode	TIMED	TIMED	Alternating exposures requested	N	N
			[s] Primary exposure time	0.000000	3.2

2.3 Aspect



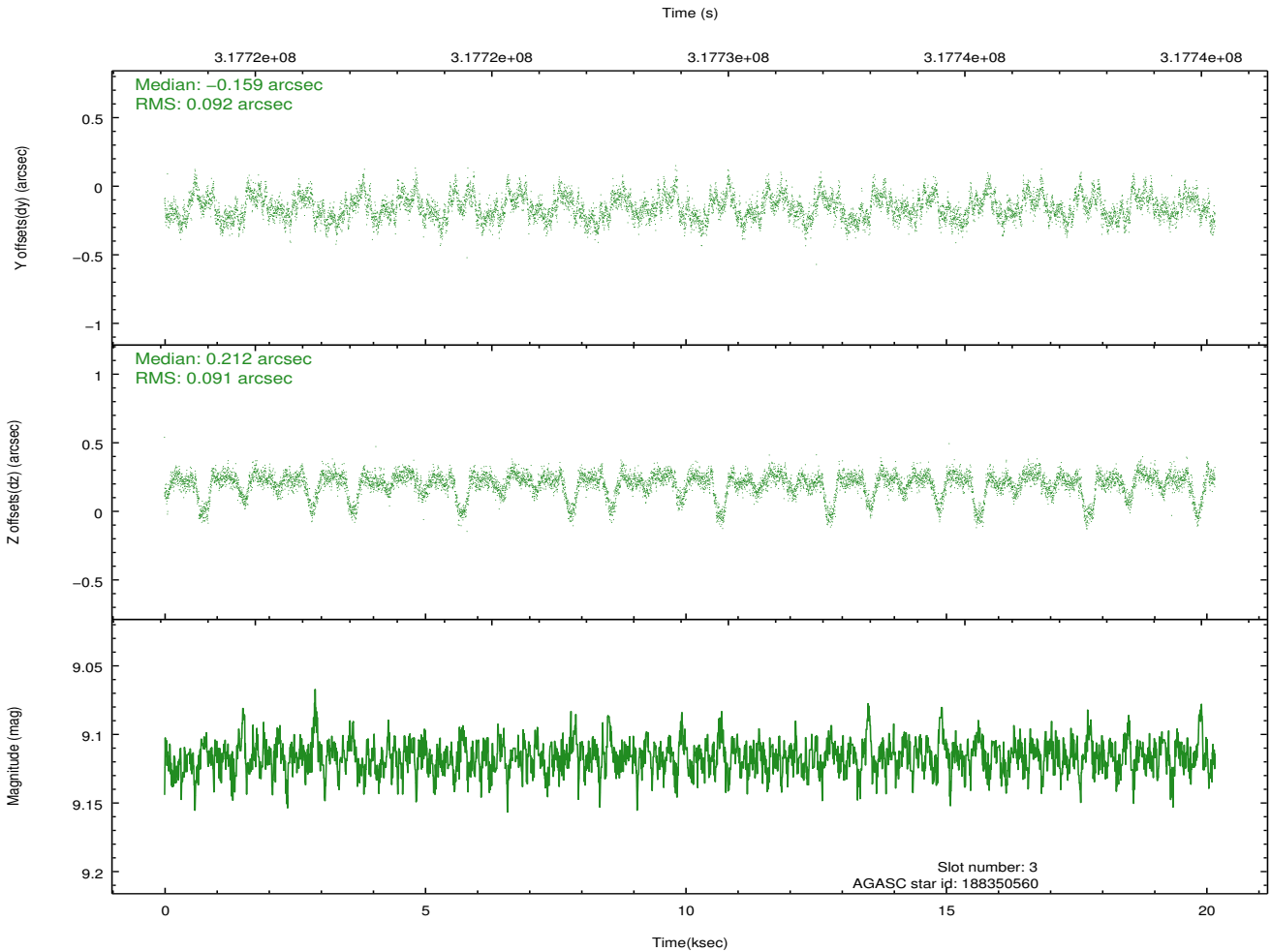
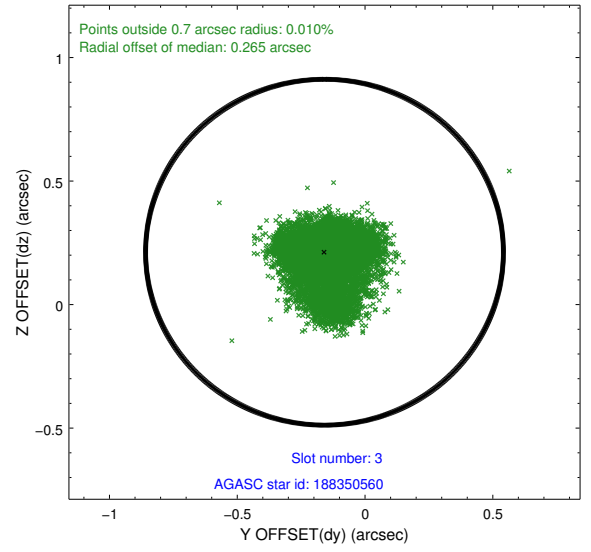
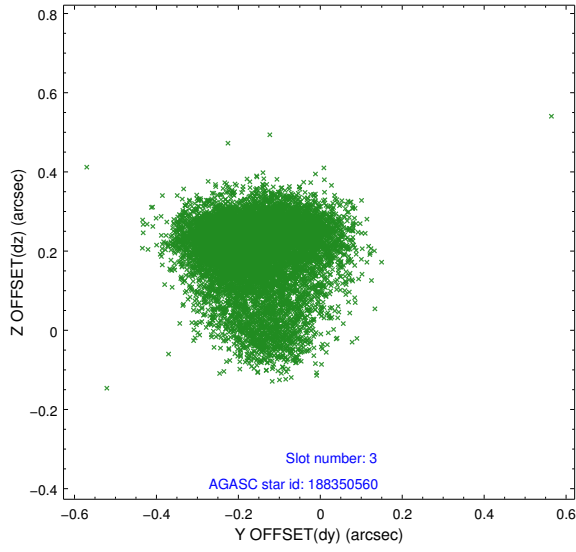


Slot Statistics

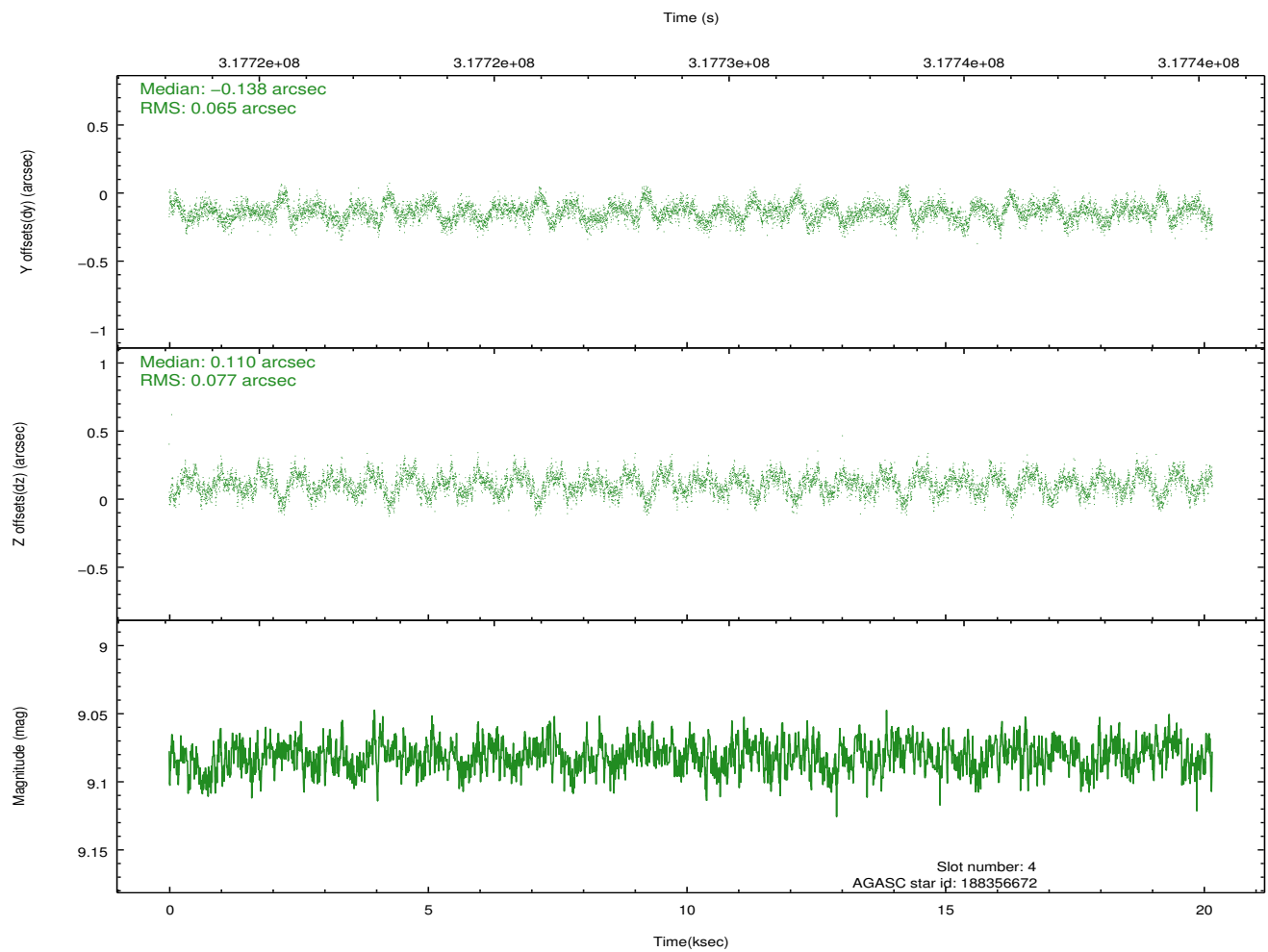
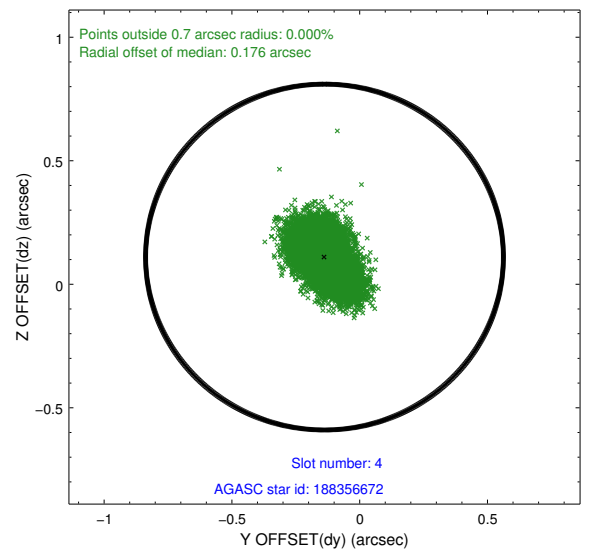
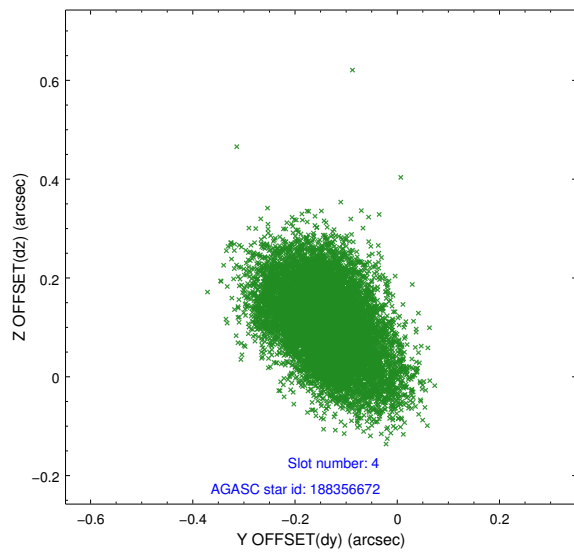
slot	status	id	mag	n_pts	med_dy	med_dz	dr1	dr2	ra	dec	mean_y	mean_z
0	FID	ACIS-S-2	7.10	4920	-0.087	-0.055	0.006	0.011	0.000000	0.000000	-767.51	-1735.81
1	FID	ACIS-S-4	7.19	4920	0.218	0.057	0.005	0.010	0.000000	0.000000	2145.98	172.60
2	FID	ACIS-S-5	7.22	4920	-0.162	0.007	0.006	0.011	0.000000	0.000000	-1820.20	166.42
3	GUIDE	188350560	9.12	9831	-0.159	0.212	0.133	0.236	169.125610	18.641654	2089.07	-584.68
4	GUIDE	188356672	9.08	9833	-0.138	0.110	0.106	0.174	168.444668	18.593396	1597.90	1692.44
5	GUIDE	188358160	10.31	9822	0.114	-0.210	0.177	0.278	168.610775	18.068520	-196.77	872.23
6	GUIDE	188366336	10.18	9818	0.233	-0.352	0.185	0.321	168.179895	17.884135	-1054.22	2244.62
7	GUIDE	188371152	10.00	9817	-0.050	0.259	0.196	0.292	169.317956	17.570920	-1635.85	-1774.84

2.4 Star Slots

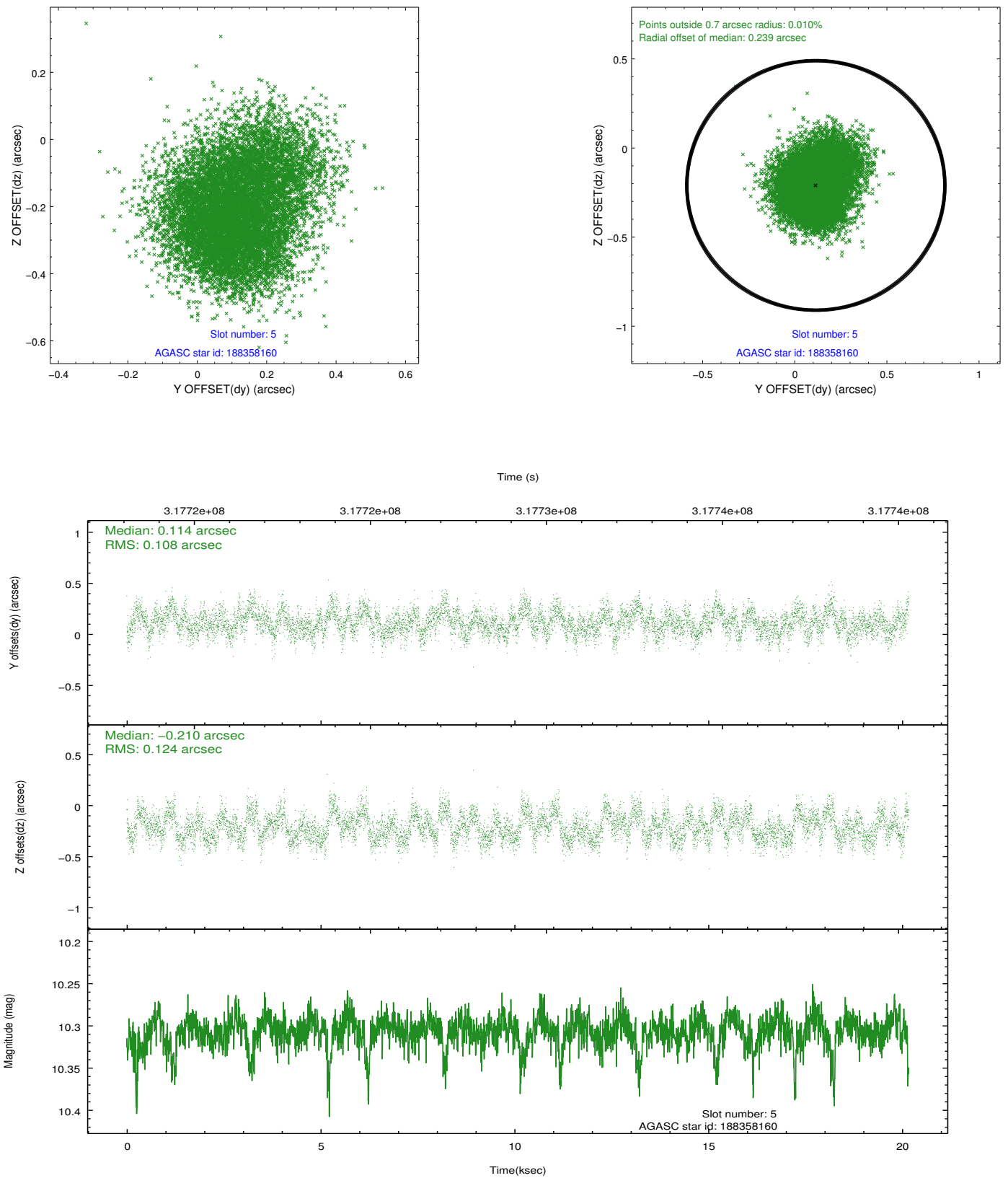
2.4.1 Slot 3



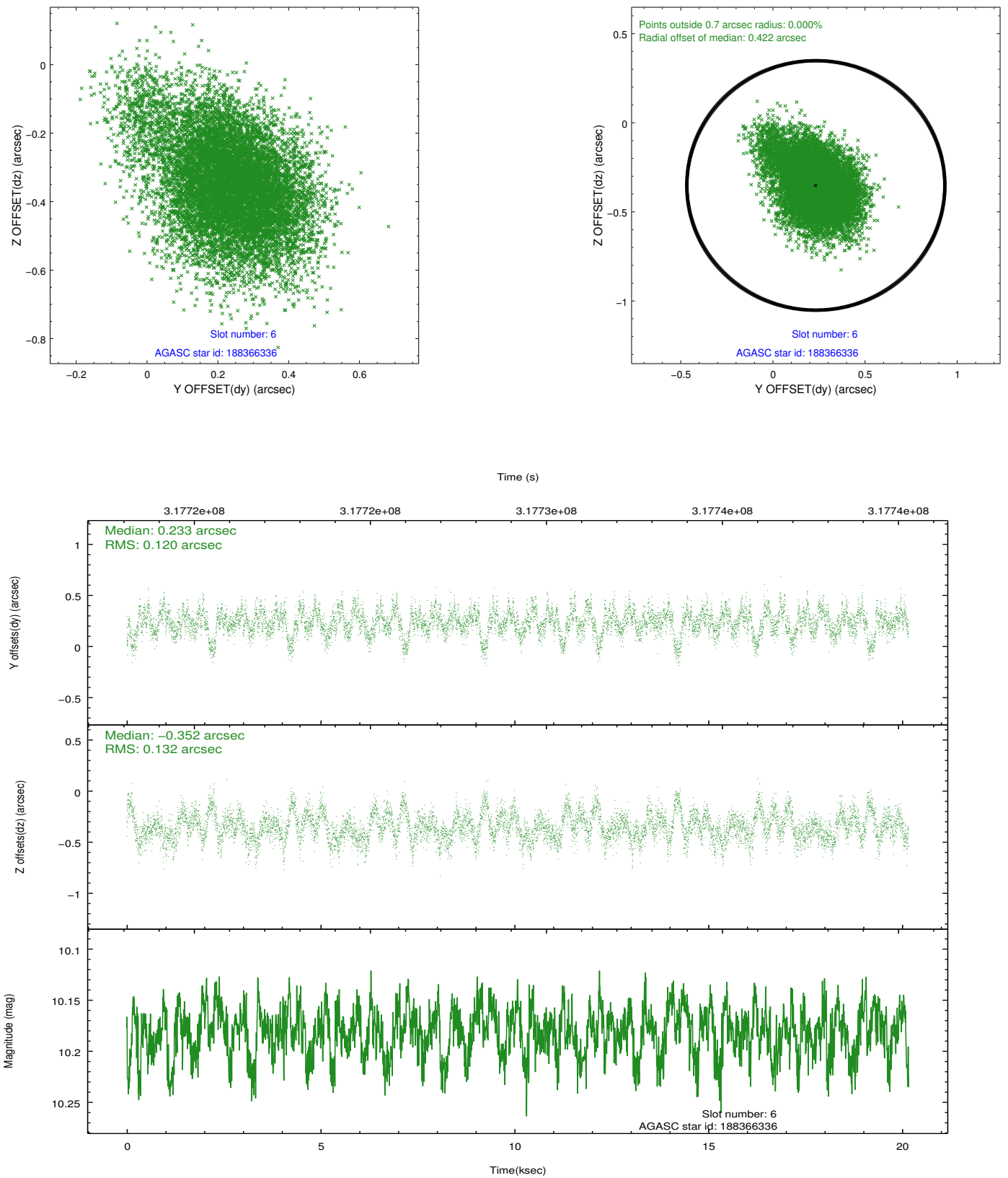
2.4.2 Slot 4



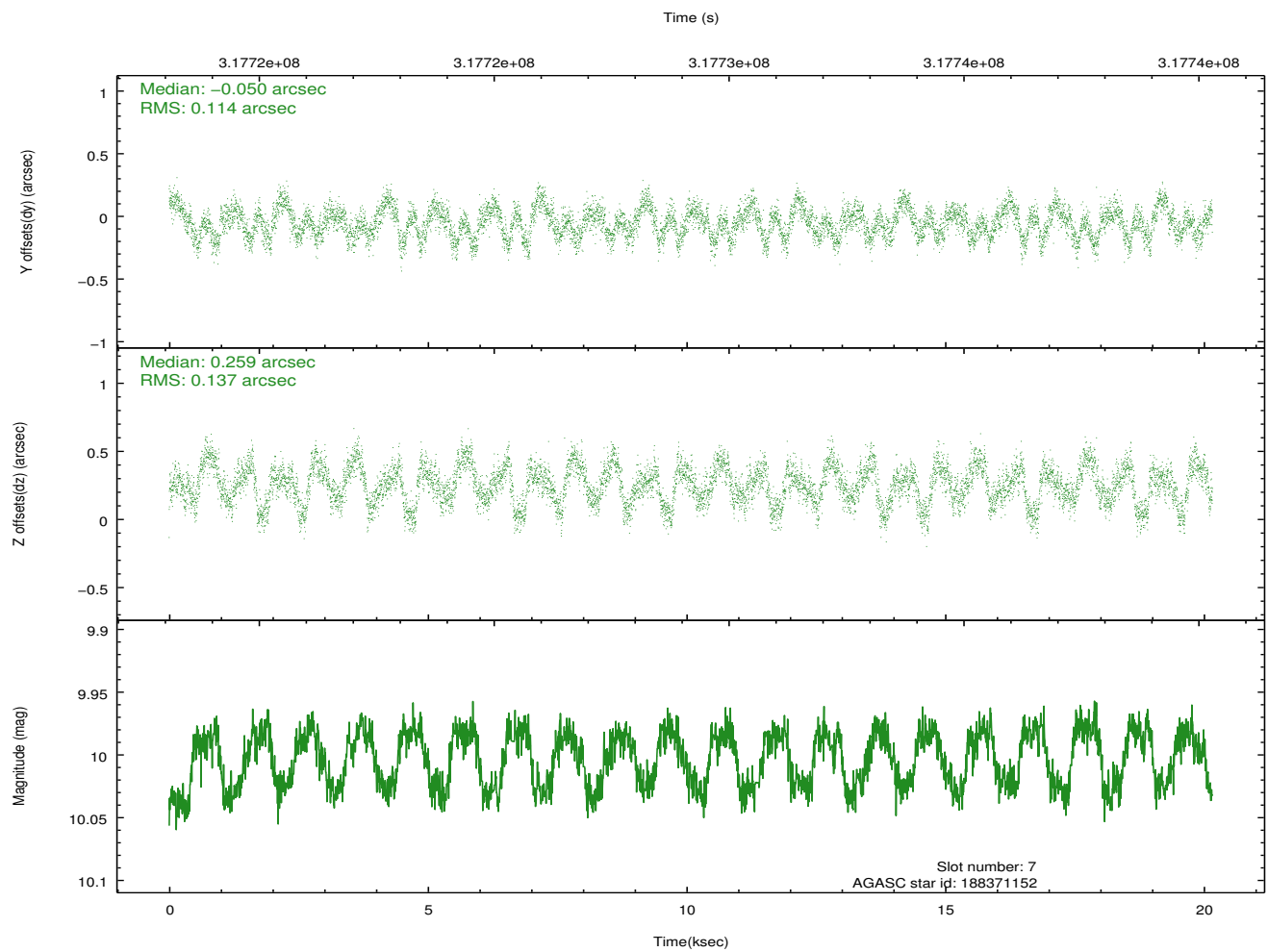
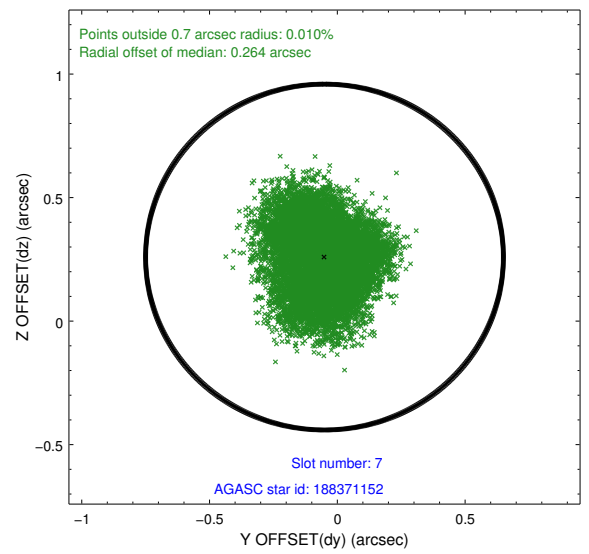
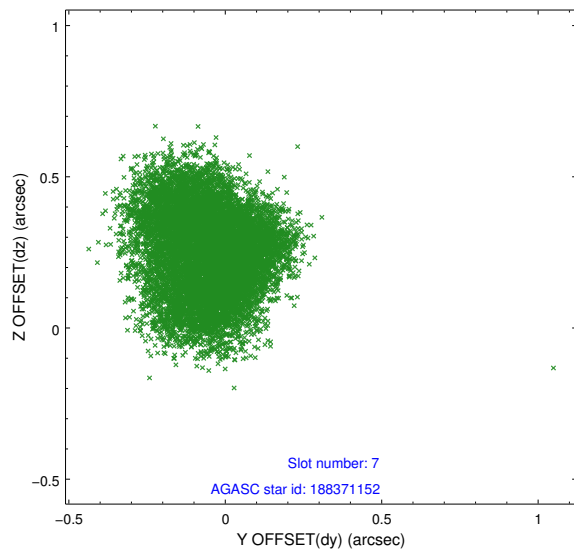
2.4.3 Slot 5



2.4.4 Slot 6

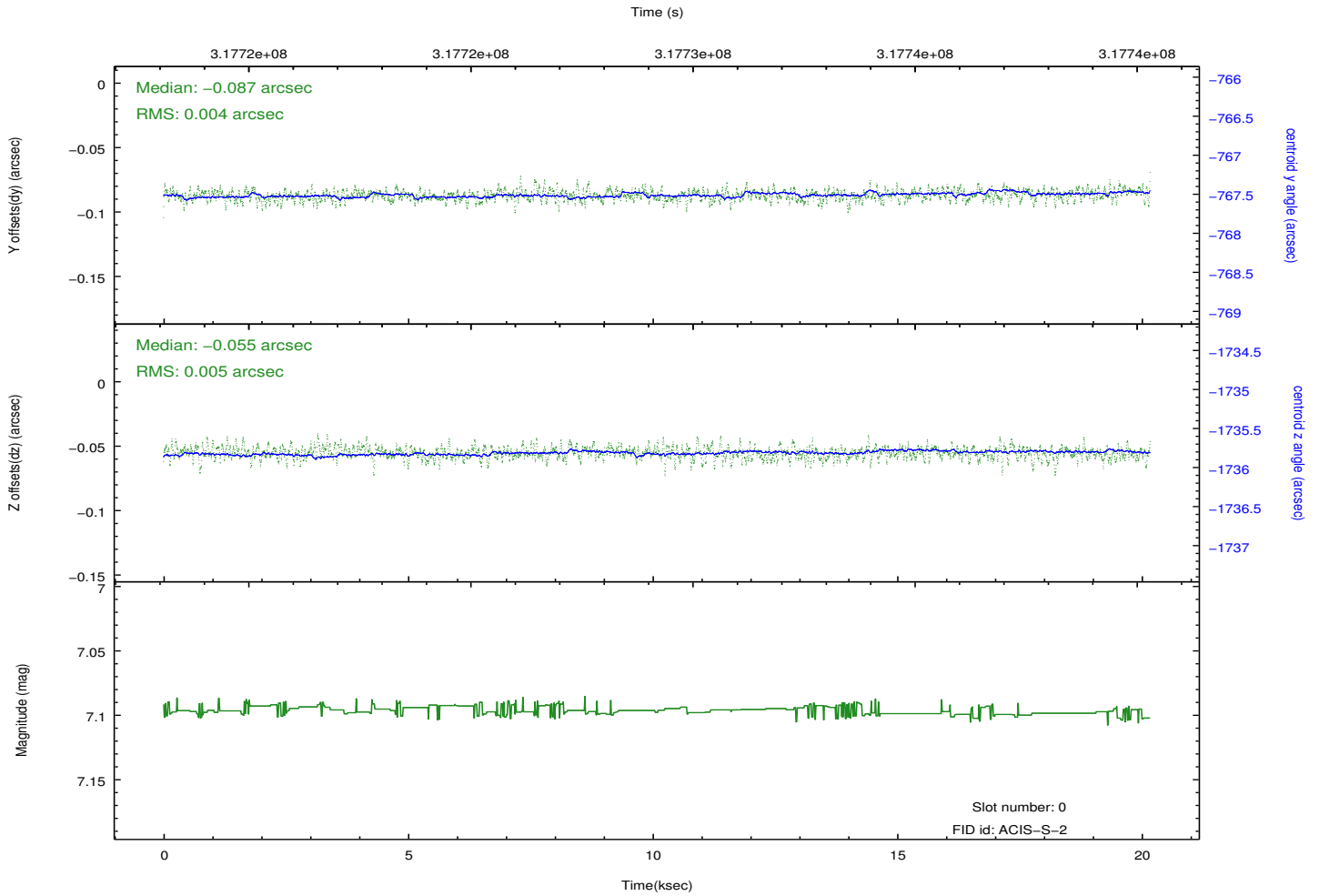
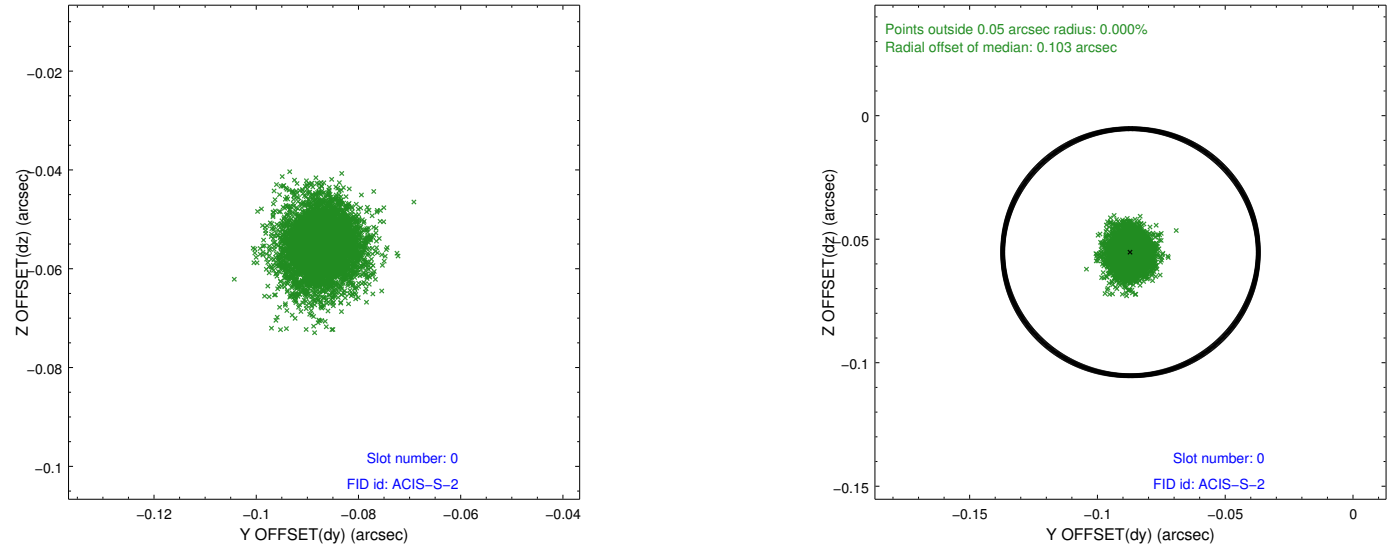


2.4.5 Slot 7

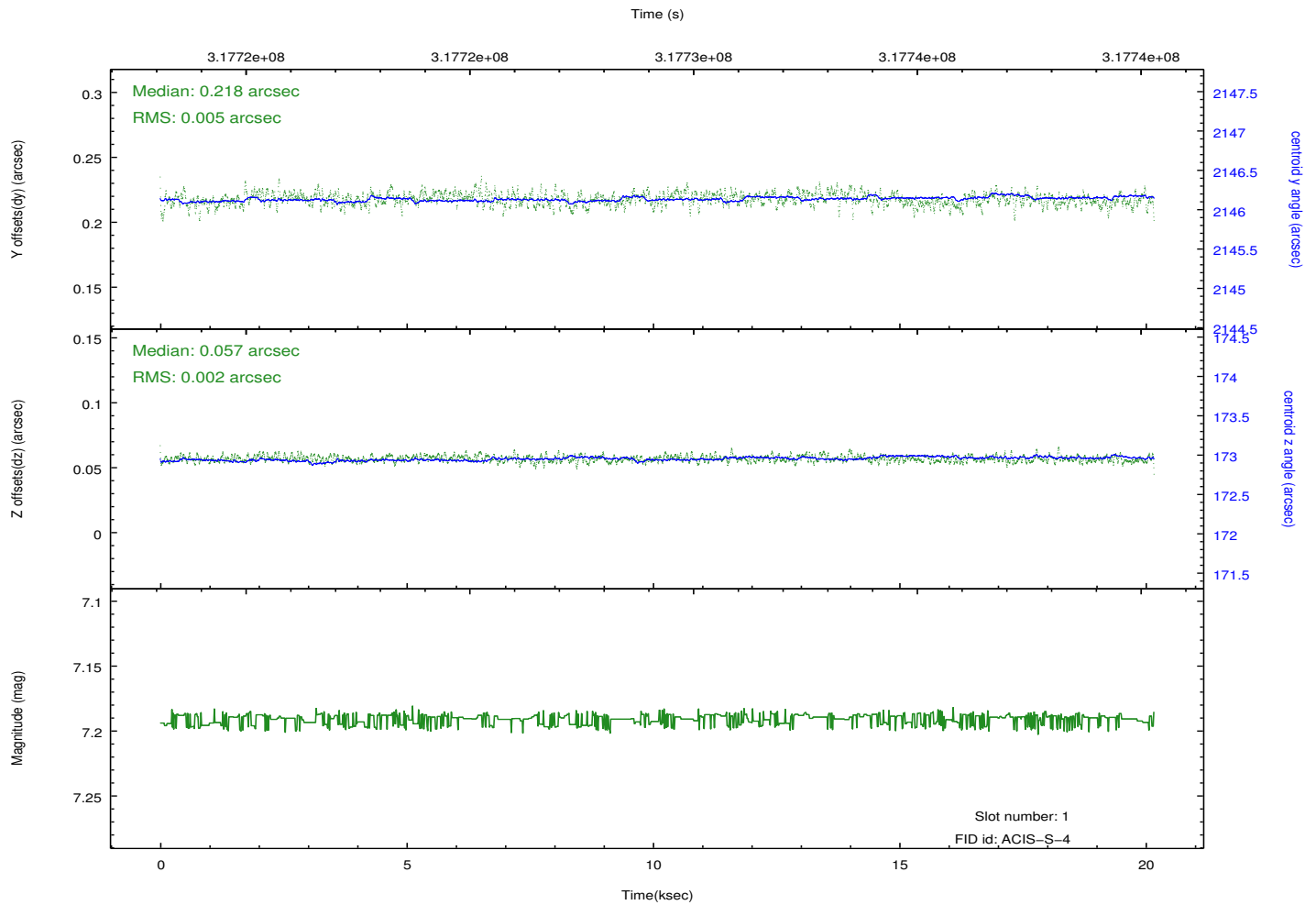
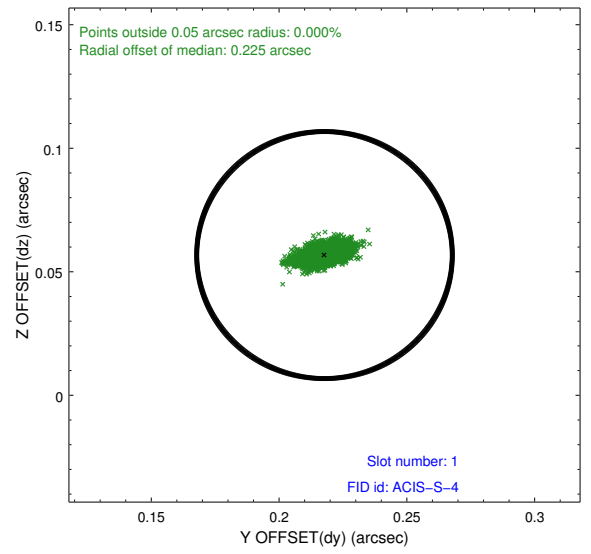
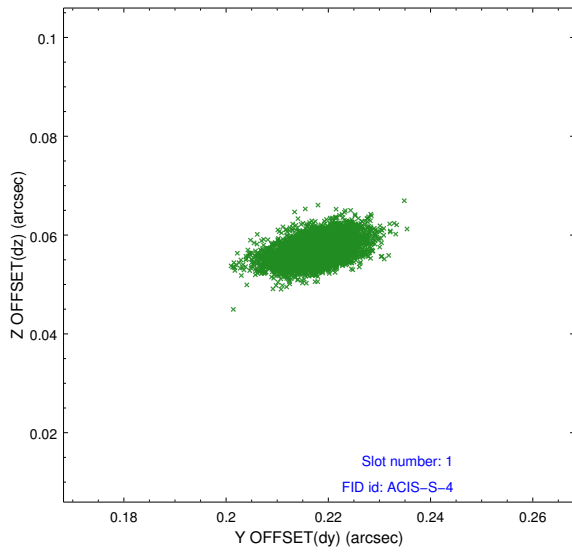


2.5 FID Slots

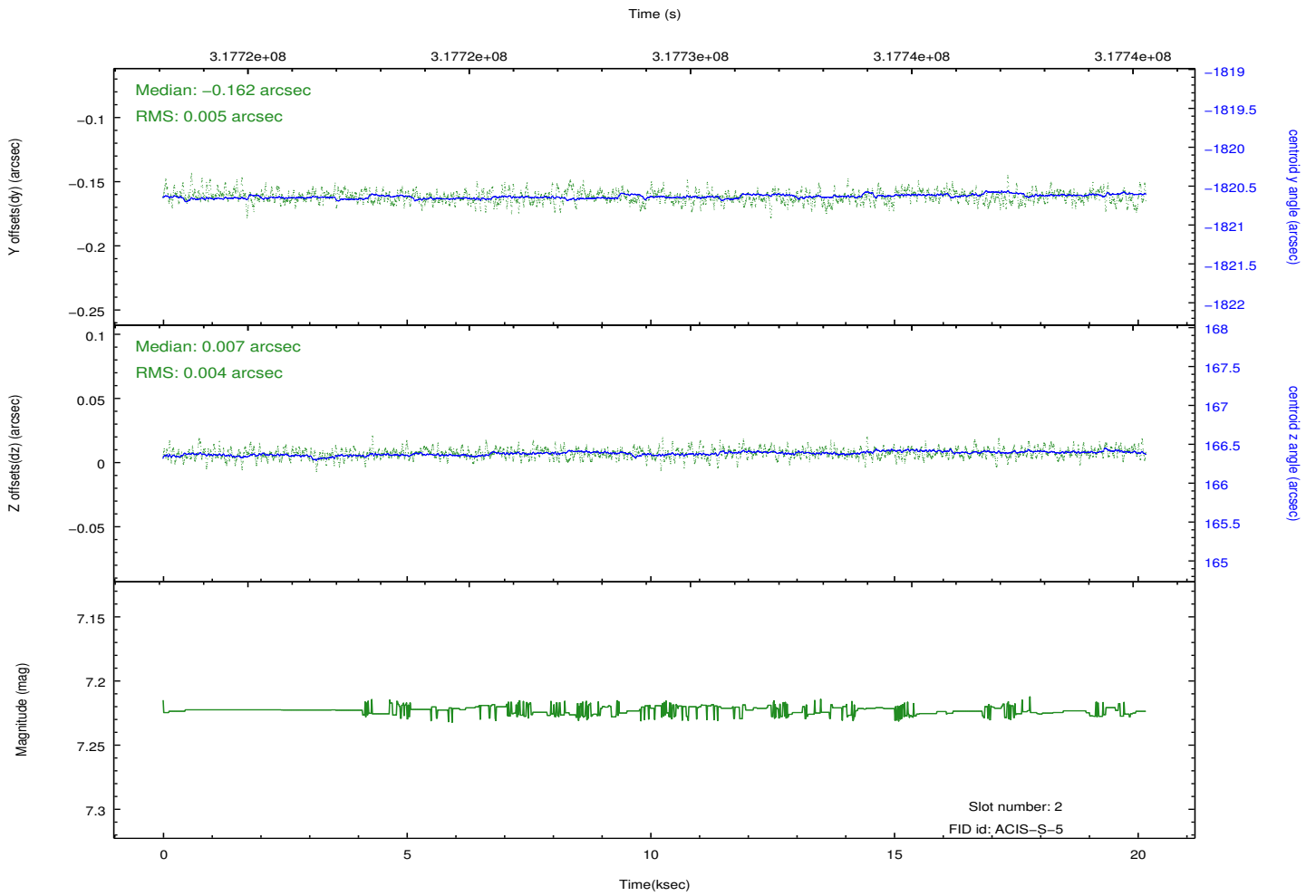
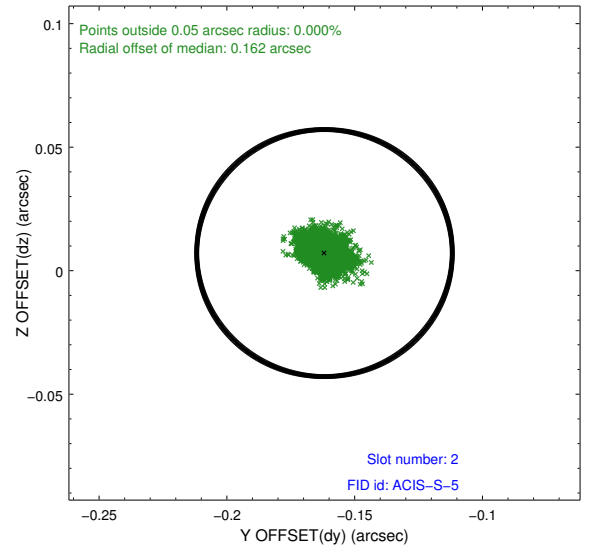
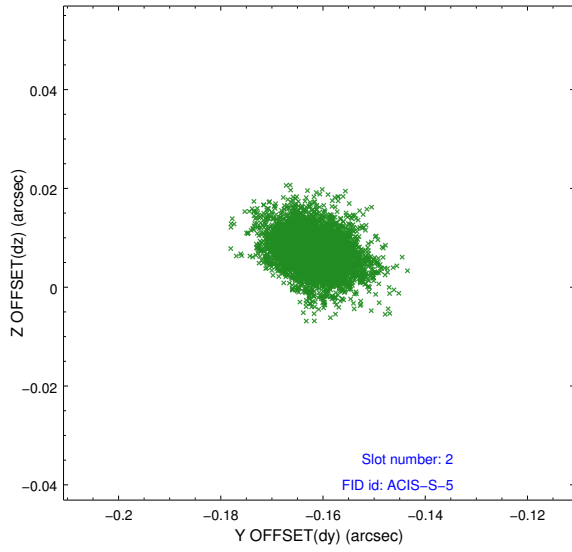
2.5.1 Slot 0



2.5.2 Slot 1



2.5.3 Slot 2



A Summary

A.1 Status

V&V Scientist	Jen Lauer
V&V Date (YYYY-MM-DD)	2012.05.10
V&V Edition	1
V&V Disposition and Status	OK
V&V Charge Time	20.1599999

A.2 Comments