

V&V Reference Report

L2 ASCDS Version : 8.4.4

Observation 9736 - L2 Version 2
Chandra X-Ray Center

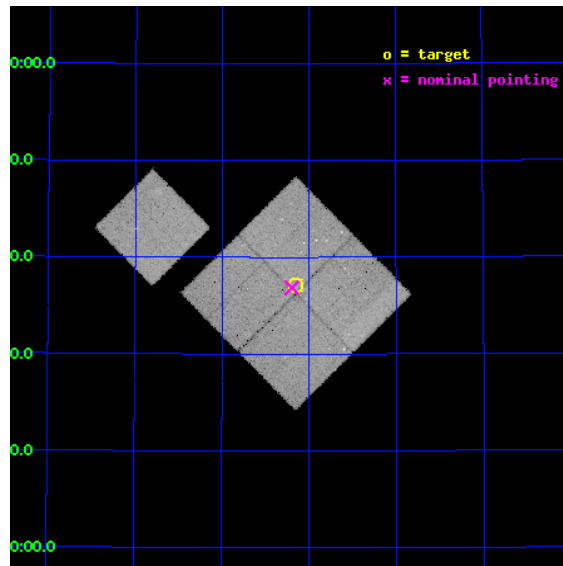
L2 Processing Date : May 21 2012

Contents

1	Front	2
2	OBI	3
2.1	OBI	3
2.1.1	Images	3
2.1.2	Bias	3
2.1.3	Parameters	4
2.1.4	Events	4
2.2	Compared Parameters	5
2.3	Aspect	6
2.4	Star Slots	9
2.4.1	Slot 3	9
2.4.2	Slot 4	10
2.4.3	Slot 5	11
2.4.4	Slot 6	12
2.4.5	Slot 7	13
2.5	FID Slots	14
2.5.1	Slot 0	14
2.5.2	Slot 1	15
2.5.3	Slot 2	16
A	Summary	17
A.1	Status	17
A.2	Comments	17

1 Front

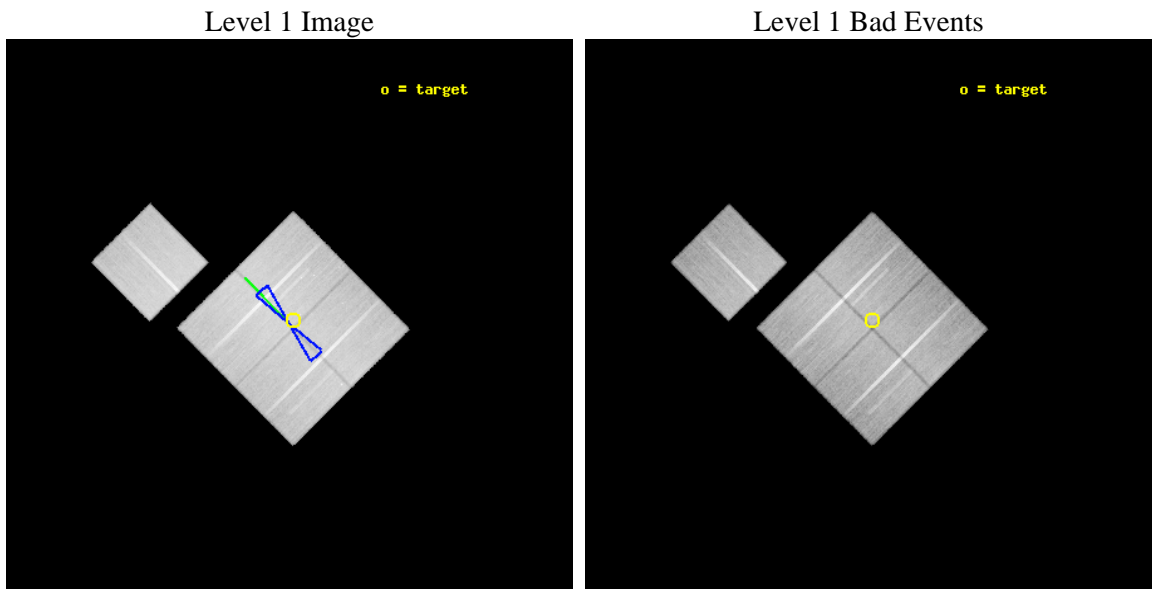
seq_num	900798	Sequence number
obs_id	9736	Observation id
title	The Evolution of Faint AGN at High Redshift	Proposal title
observer	Prof Kirpal Nandra	Principal investigator
object	AEGIS-3	Source name
dtcycle	0	
cycle	P	events from which exps? Prim/Second/Both
ra_targ	214.5375	Observer's specified target RA [deg]
dec_targ	52.617889	Observer's specified target Dec [deg]
ra_nom	214.54929916783	Nominal RA [deg]
dec_nom	52.614157231608	Nominal Dec [deg]
roll_nom	315.19930638958	Nominal Roll [deg]
revision	2	Processing version of data
ontime	50136.300385594	Sum of GTIs [s]
livetime	49481.232711249	Livetime [s]
ontime0	50117.454593539	Sum of GTIs [s]
ontime1	50130.018424988	Sum of GTIs [s]
ontime2	50117.454533875	Sum of GTIs [s]
ontime3	50136.300385594	Sum of GTIs [s]
ontime6	50133.159395337	Sum of GTIs [s]
l2events	177859	Number of level 2 events



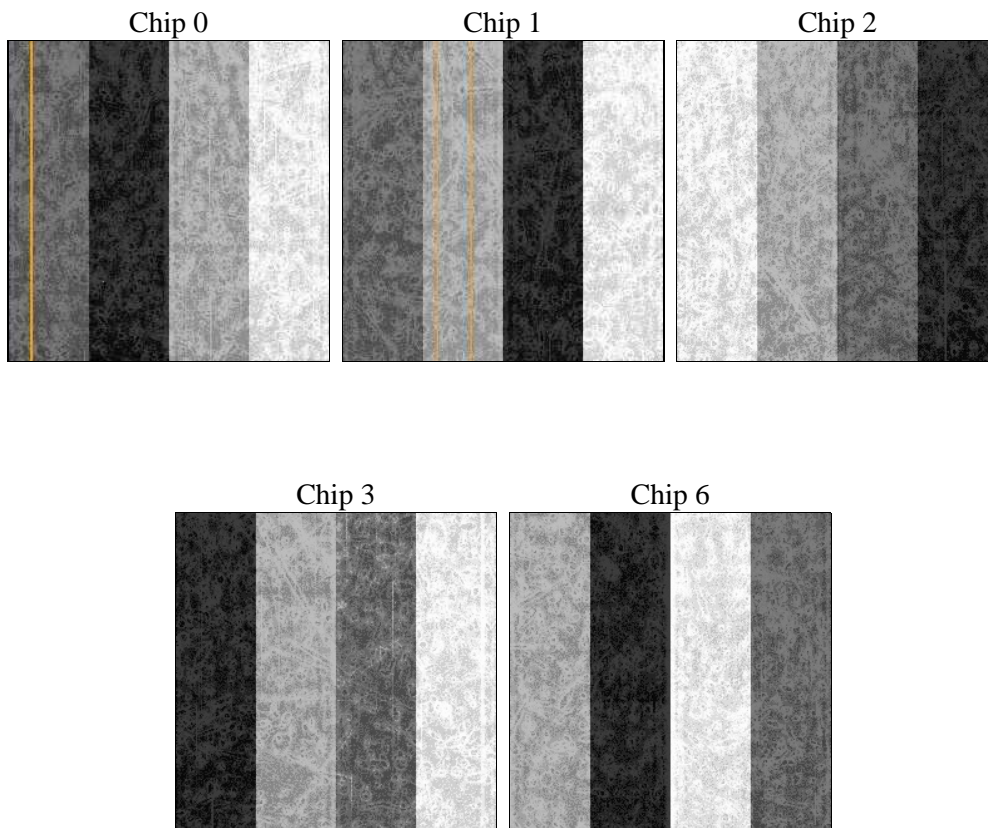
2 OBI

2.1 OBI

2.1.1 Images



2.1.2 Bias



2.1.3 Parameters

obi_num	0	Obi number	sched_exp_time	50000.098000	[s] Scheduled observation exposure time
ascdsver	8.4.4	Processing system revision	ontime	50136.300385594	Sum of GTIs [s]
caldbver	4.4.9	 	ontime0	50117.454593539	Sum of GTIs [s]
date	2012-05-21T22:21:45	Date and time of file creation	ontime1	50130.018424988	Sum of GTIs [s]
revision	2	Processing version of data	ontime2	50117.454533875	Sum of GTIs [s]
			ontime3	50136.300385594	Sum of GTIs [s]
			ontime6	50133.159395337	Sum of GTIs [s]
			l1events	2082129	Number of level 1 events

2.1.4 Events

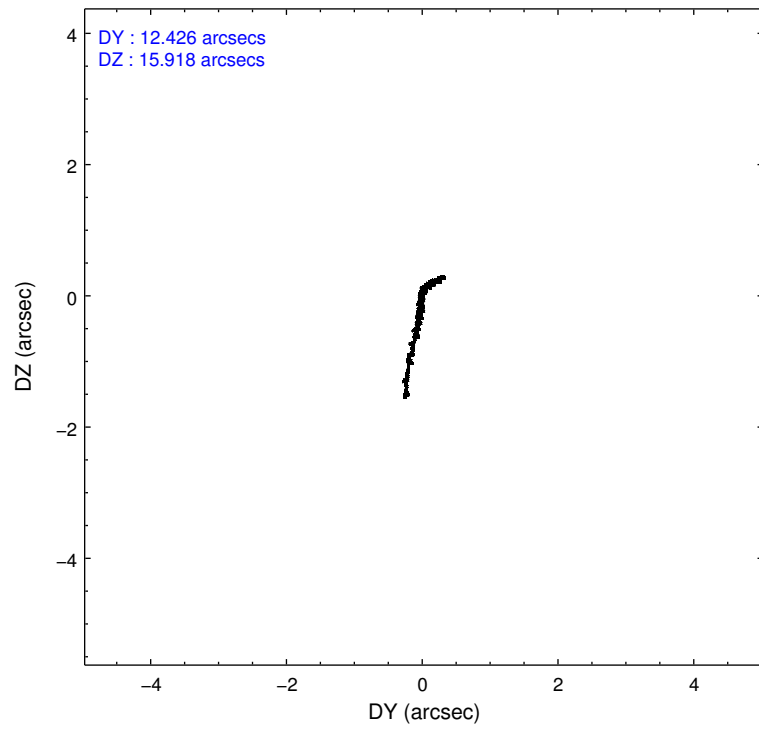
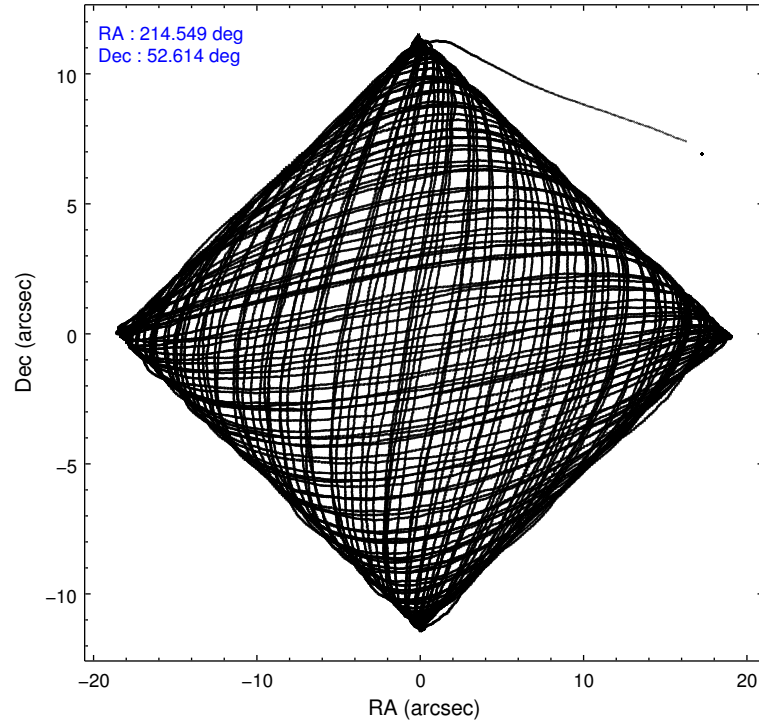
	ccd 0	ccd 1	ccd 2	ccd 3	ccd 6
level 1 events	398108	394046	448086	421912	419977
rejected events	356188	346477	407234	380854	377072
rejected %	89%	87%	90%	90%	89%

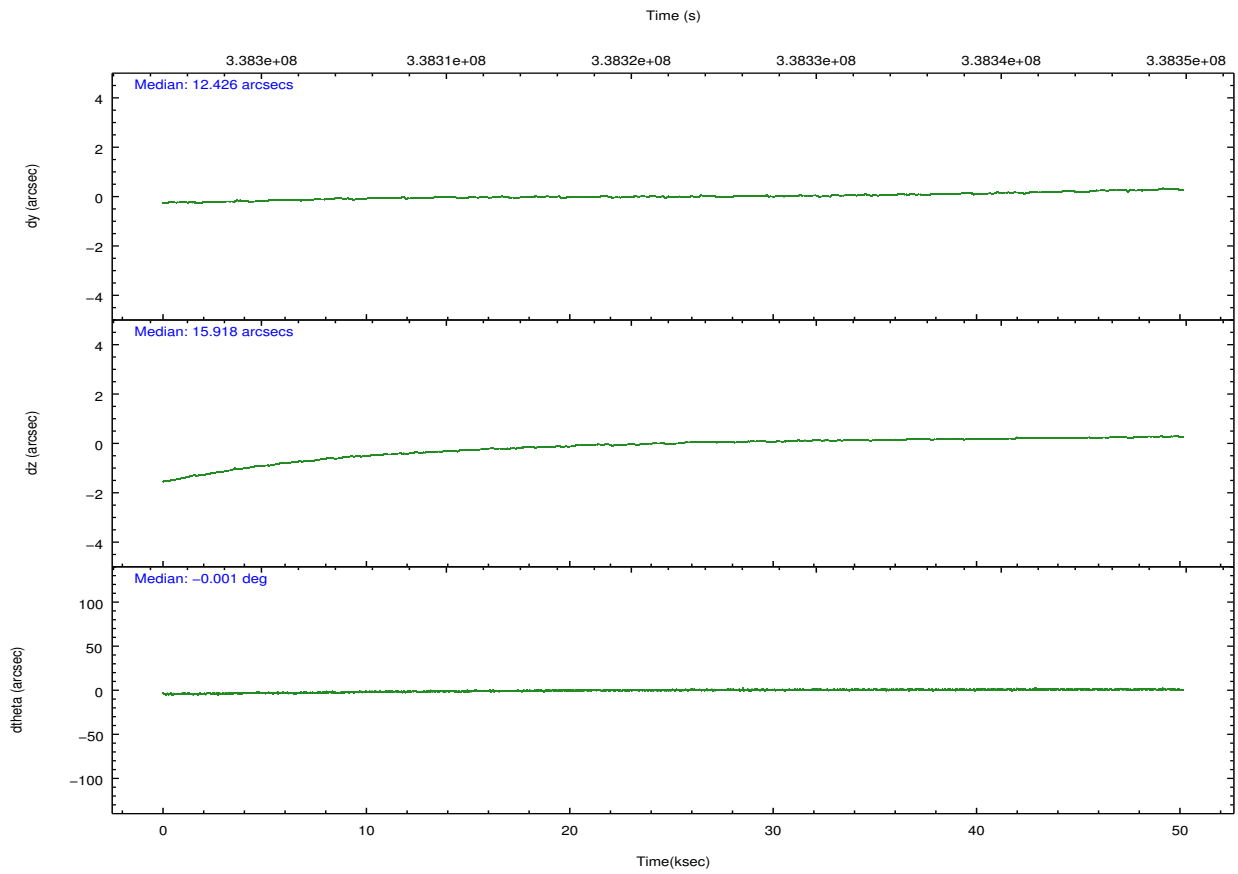
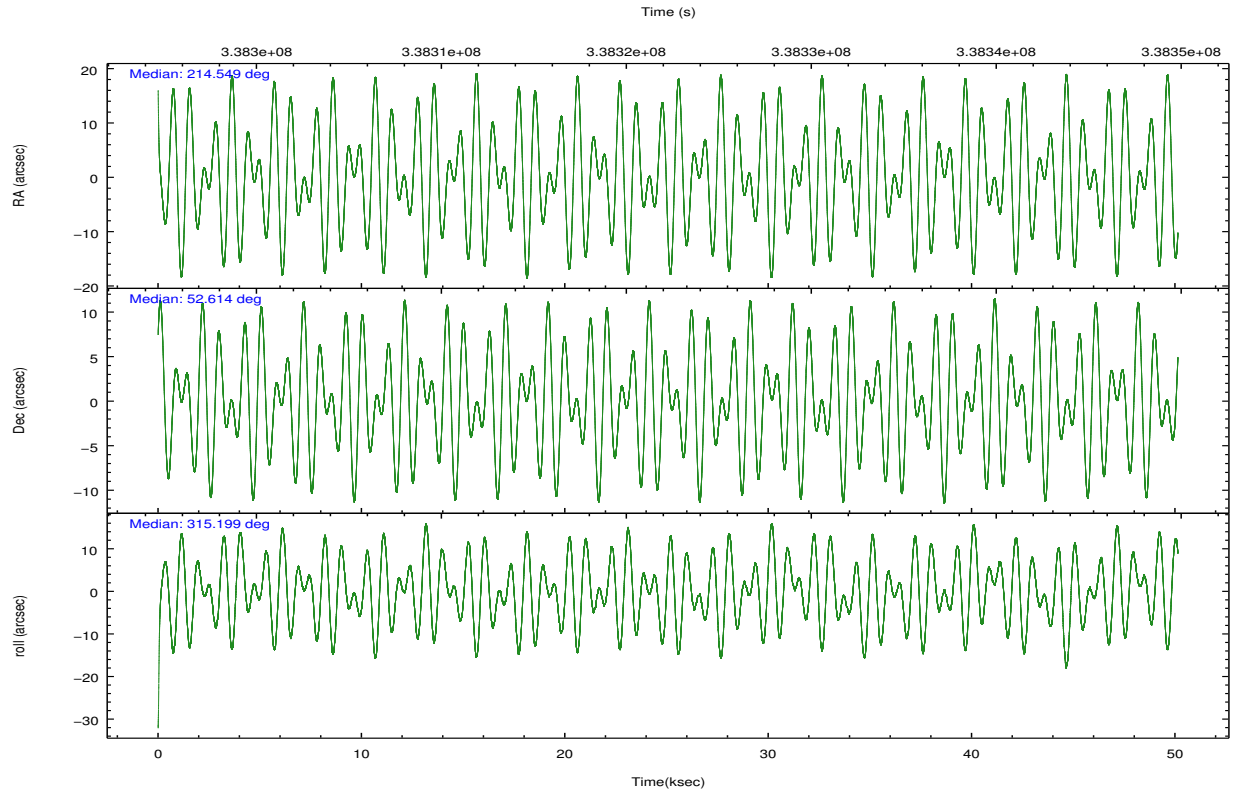
	ccd 0	ccd 1	ccd 2	ccd 3	ccd 6
grade 0 events	14665	17283	14671	15031	14941
	3%	4%	3%	3%	3%
grade 1 events	234	205	255	227	192
	0%	0%	0%	0%	0%
grade 2 events	10489	11164	10298	9091	9786
	2%	2%	2%	2%	2%
grade 3 events	4681	5151	4318	4634	4737
	1%	1%	0%	1%	1%
grade 4 events	4261	4945	4615	4457	4632
	1%	1%	1%	1%	1%
grade 5 events	14852	16613	13795	17650	17111
	3%	4%	3%	4%	4%
grade 6 events	8327	9621	7510	8354	9364
	2%	2%	1%	1%	2%
grade 7 events	340599	329064	392624	362468	359214
	85%	83%	87%	85%	85%

2.2 Compared Parameters

Parameter	Planned	Actual	Parameter	Planned	Actual
Instrument	ACIS	ACIS	Obspar format version number	7	7
Detector	ACIS-01236	ACIS-01236	Obspar file type	PREDICTED	ACTUAL
Grating	NONE	NONE	Obspar update status	NONE	UPDATED
Data mode	VFAINT	VFAINT	CCD I0 on	Y	Y
Observation mode	POINTING	POINTING	CCD I1 on	Y	Y
[deg] Pointing RA	214.505473	214.5492991678265	CCD I2 on	Y	Y
[deg] Pointing Dec	52.621071	52.61415723160789	CCD I3 on	Y	Y
[deg] Pointing Roll	315.025452	315.1993063895774	CCD S0 on	N	N
[deg] Roll angle	50.000000	50.000000	CCD S1 on	N	N
[deg] Roll tolerance	10.000000	10.000000	CCD S2 on	O1	Y
Roll constraint allows 180D rotation	Y	Y	CCD S3 on	N	N
[mm] SIM focus pos	-0.782348	-0.7809083437167272	CCD S4 on	N	N
[mm] SIM defocus	0	0.001439871863259334	CCD S5 on	N	N
[mm] SIM translation stage pos	-233.592463	-233.5874344608287	Number of optional ACIS chips dropped	0	0
[mm] SIM translation stage offset	0	-0.005018542100998502	On-chip summing requested	N	N
[s] Observation start time (MET)	338297332.184000	338296030.21059	Subarray requested	NONE	NONE
Observation start date	2008-09-20T11:27:47	2008-09-20T11:07:10	Alternating exposures requested	N	N
[s] Observation end time (MET)	338347332.184000	338347568.75062	[s] Primary exposure time	0.000000	3.1
Observation end date	2008-09-21T01:21:07	2008-09-21T01:26:08			
Read mode	TIMED	TIMED			

2.3 Aspect



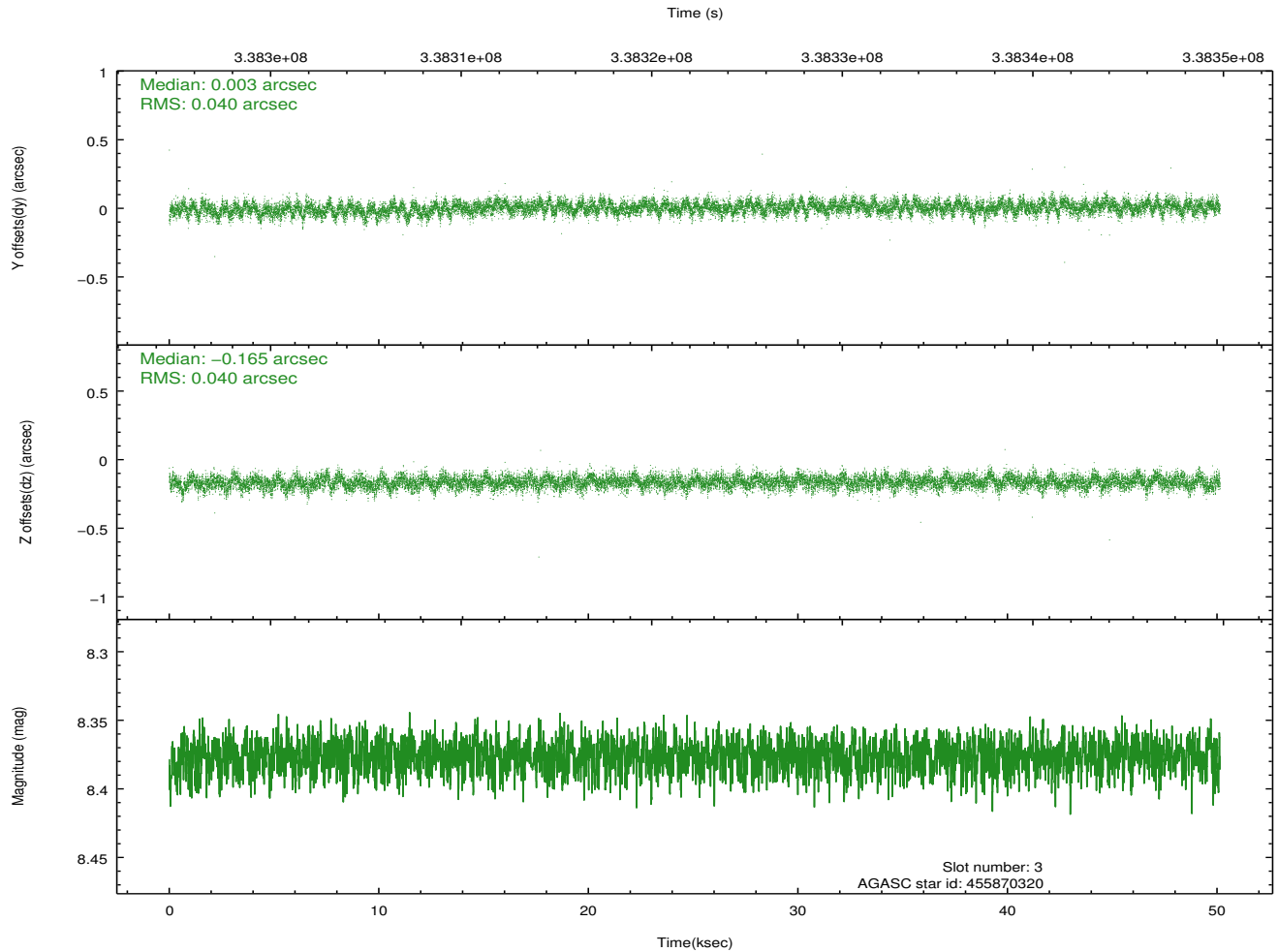
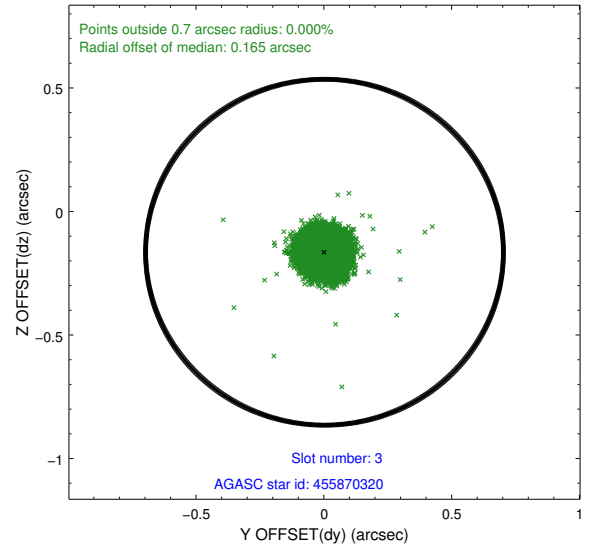
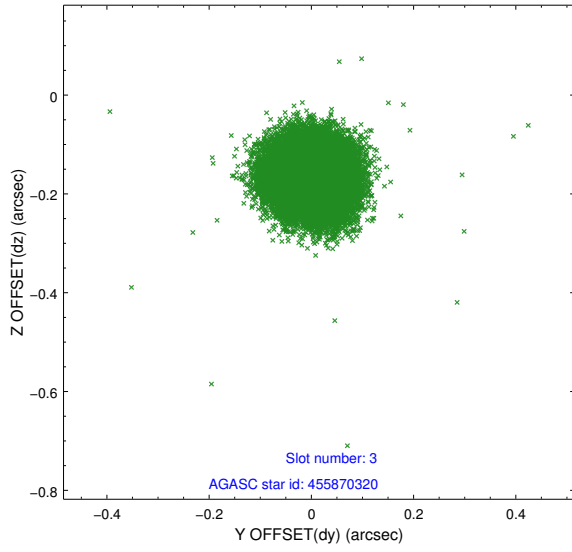


Slot Statistics

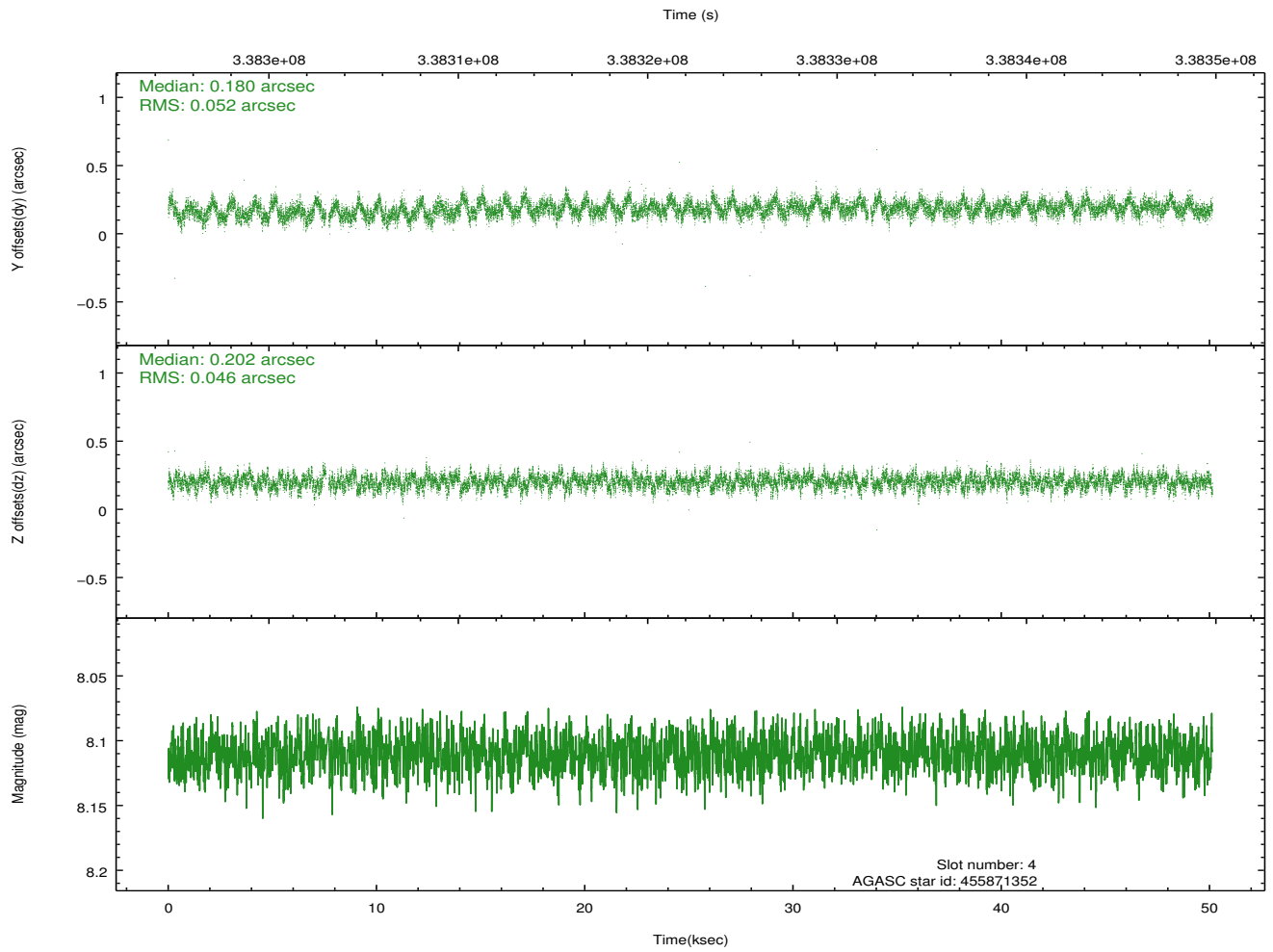
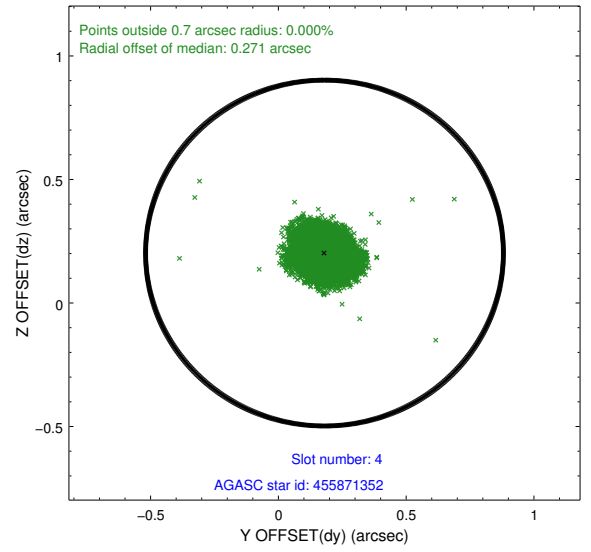
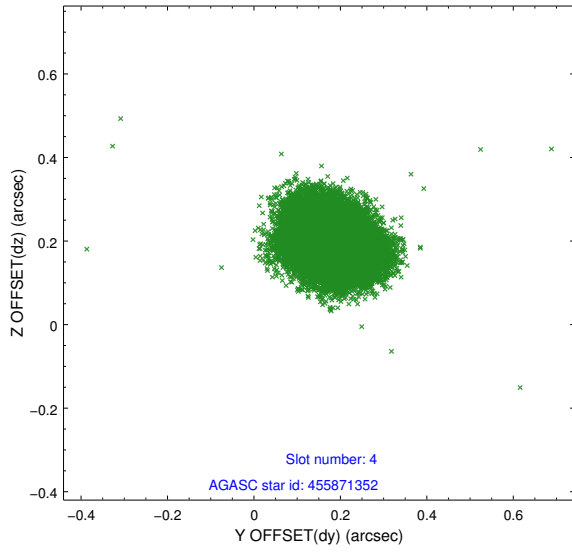
slot	status	id	mag	n_pts	med_dy	med_dz	dr1	dr2	ra	dec	mean_y	mean_z
0	FID	ACIS-I-1	6.99	12229	0.033	-0.017	0.015	0.067	0.000000	0.000000	927.11	-839.39
1	FID	ACIS-I-5	6.98	12229	-0.164	0.048	0.013	0.032	0.000000	0.000000	-1821.18	1058.19
2	FID	ACIS-I-6	6.99	12229	0.041	0.037	0.011	0.034	0.000000	0.000000	392.71	1702.64
3	GUIDE	455870320	8.38	24451	0.003	-0.165	0.060	0.097	214.874440	52.401638	1130.61	15.51
4	GUIDE	455871352	8.11	24318	0.180	0.202	0.074	0.119	215.099961	52.172669	2066.19	-210.00
5	GUIDE	504894728	8.81	24385	-0.061	0.206	0.071	0.115	213.220892	52.722550	-2256.89	-1703.14
6	GUIDE	505806936	7.01	24457	-0.072	-0.152	0.071	0.121	213.820815	52.535927	-848.82	-1271.41
7	GUIDE	505812088	8.13	24449	-0.057	-0.090	0.070	0.111	214.186617	53.263562	-2121.42	1152.16

2.4 Star Slots

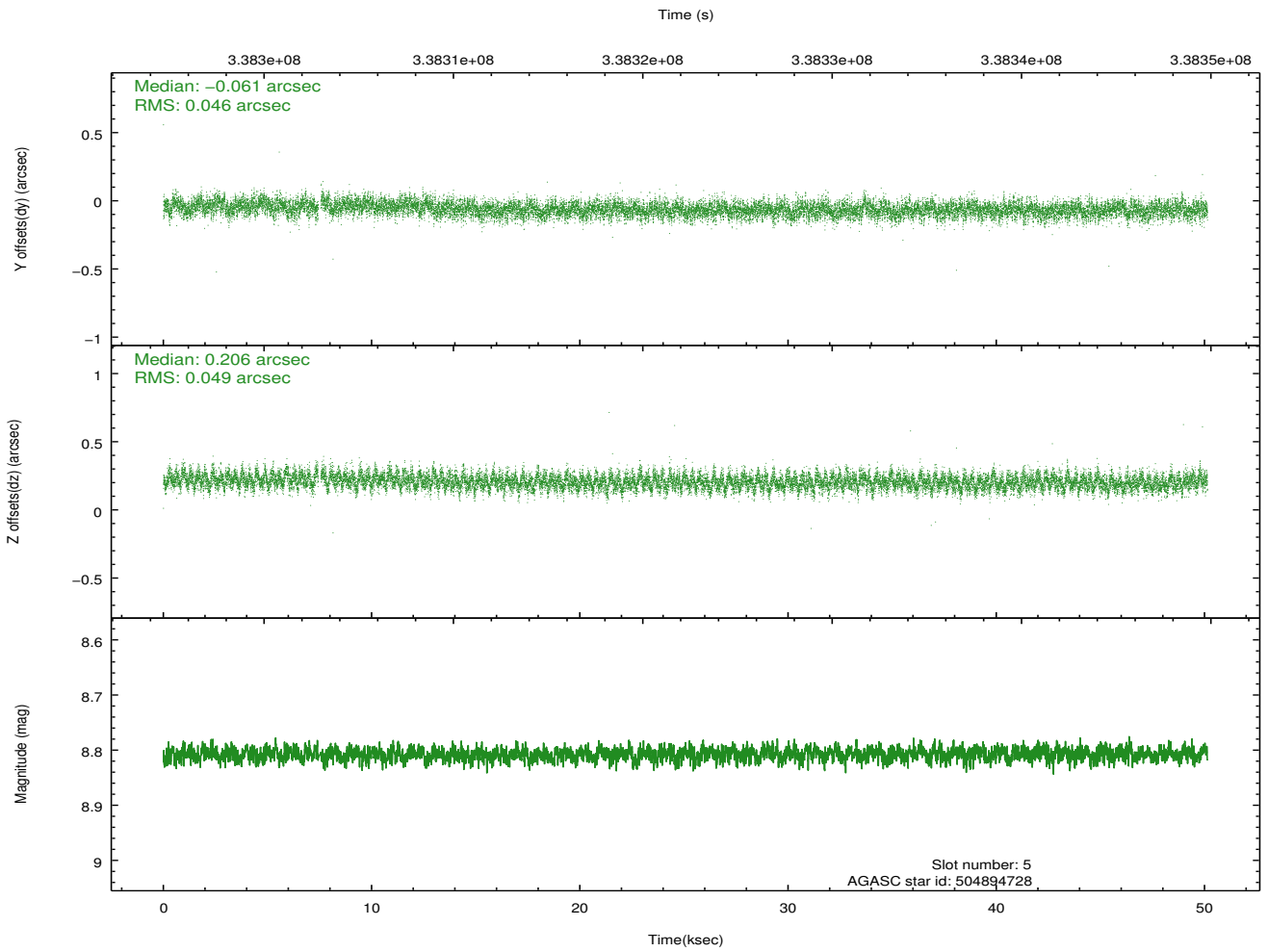
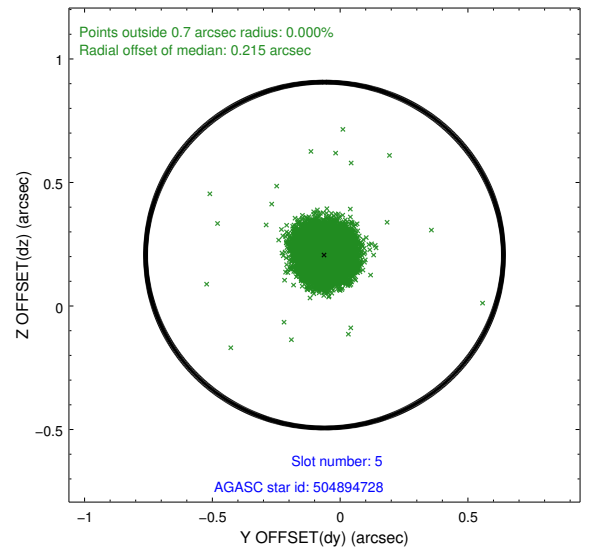
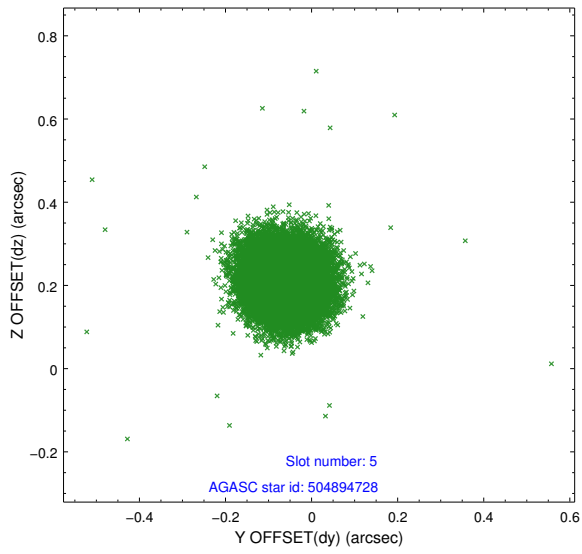
2.4.1 Slot 3



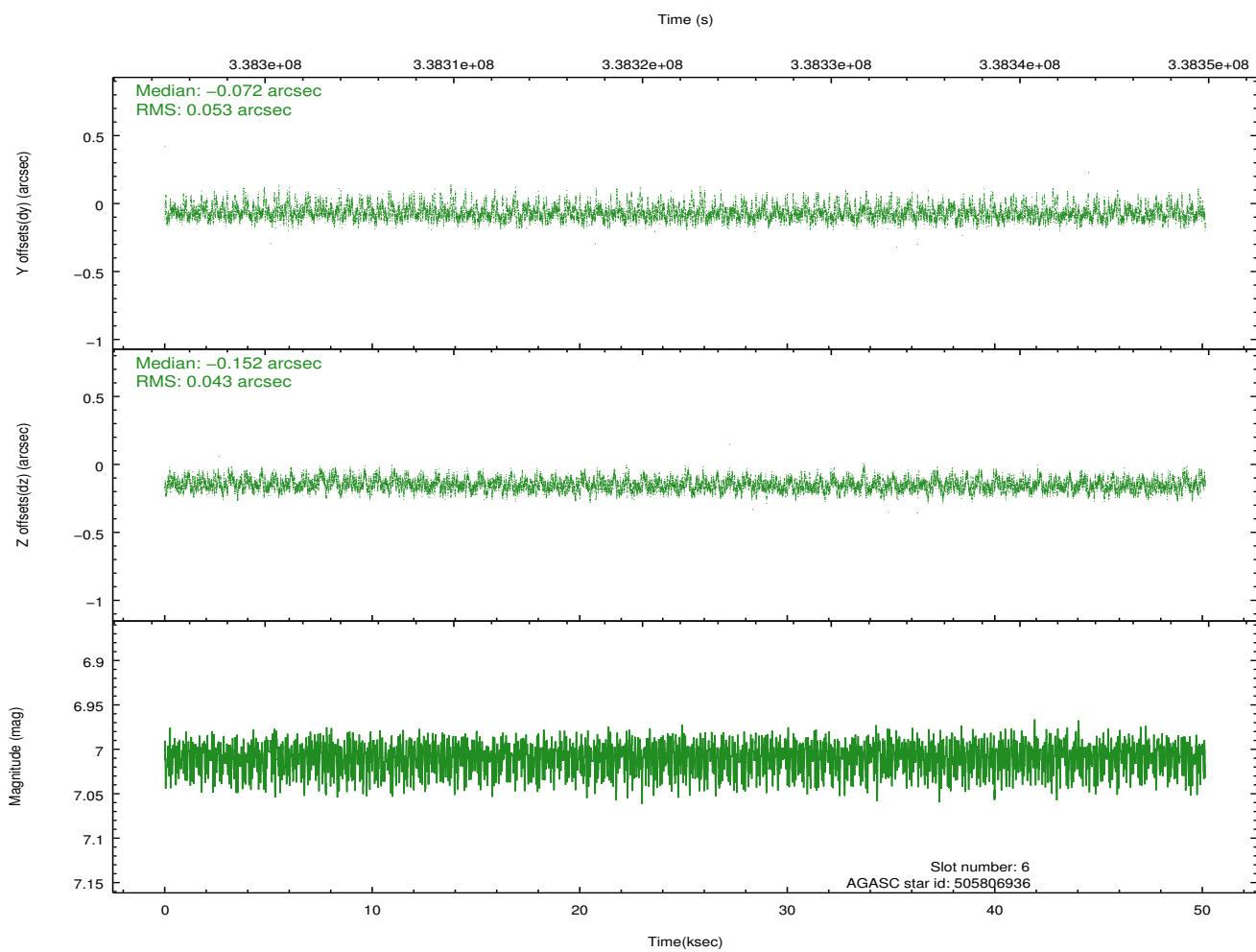
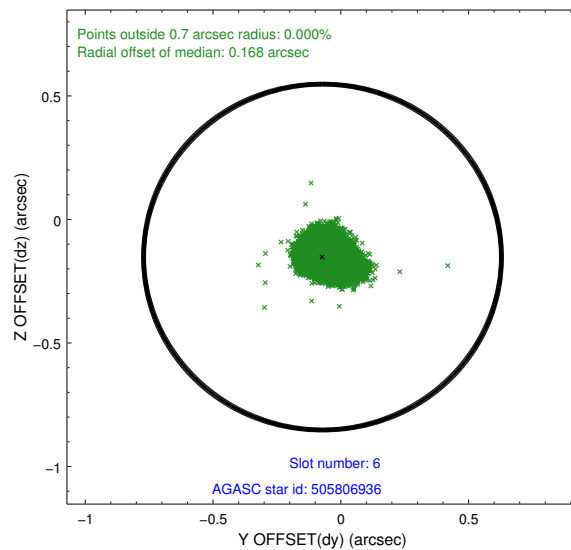
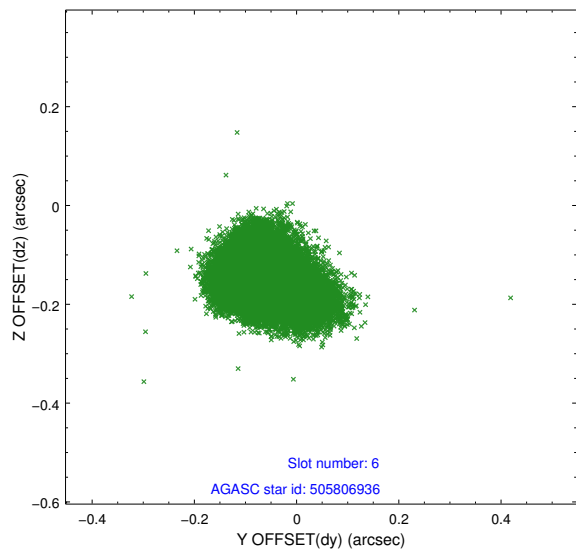
2.4.2 Slot 4



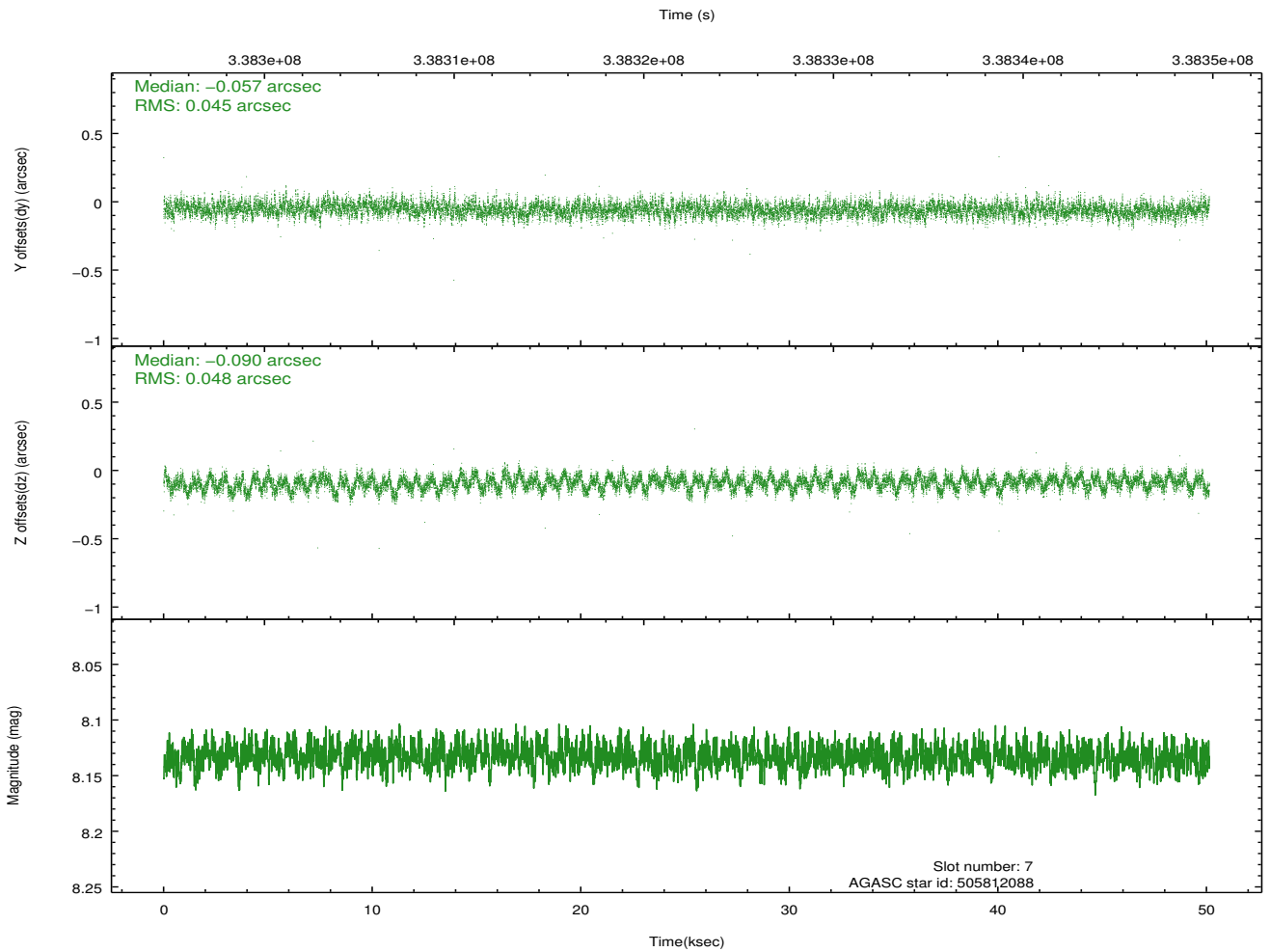
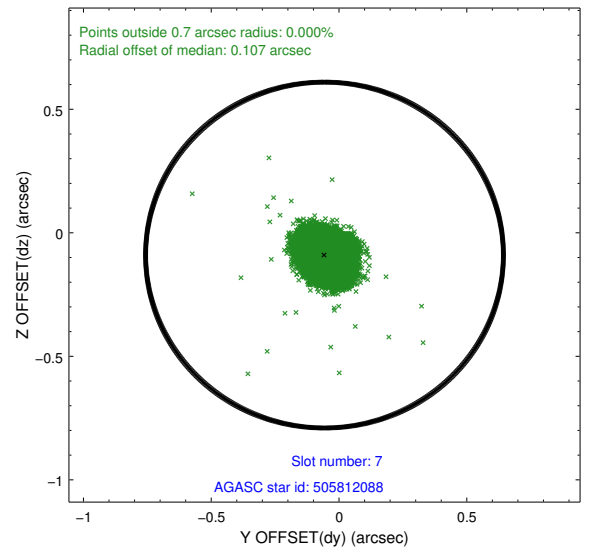
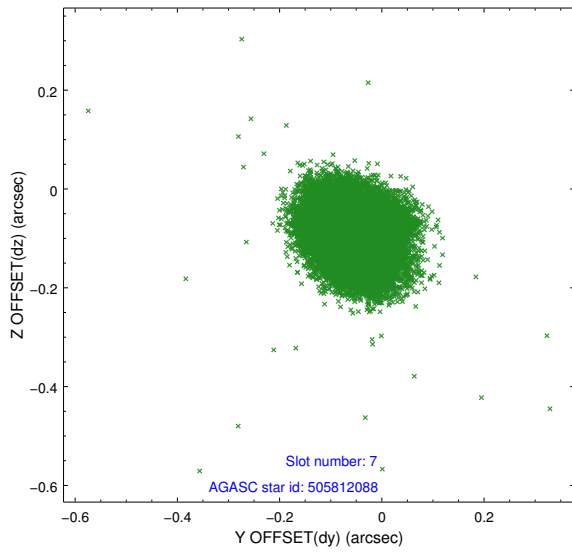
2.4.3 Slot 5



2.4.4 Slot 6

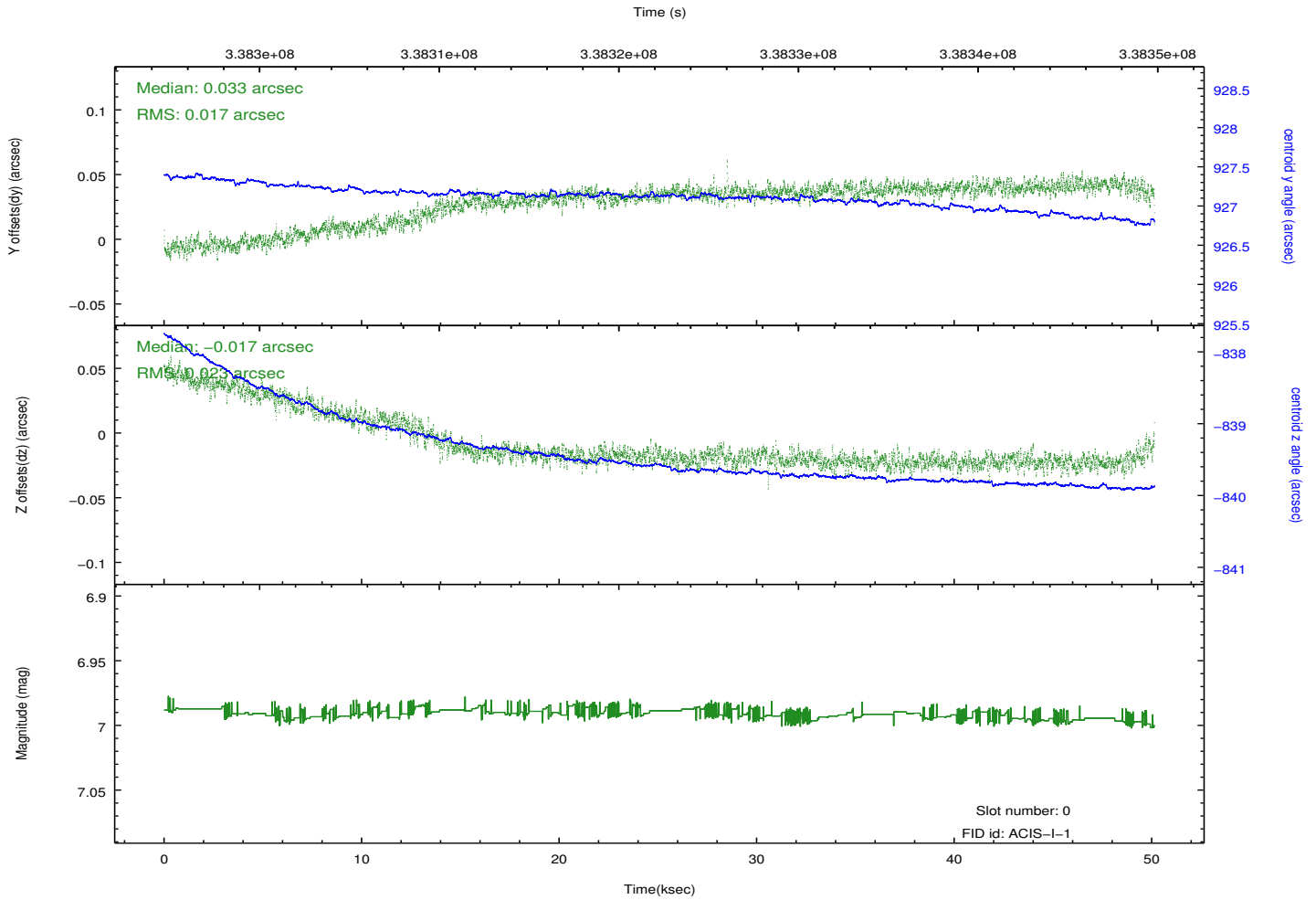
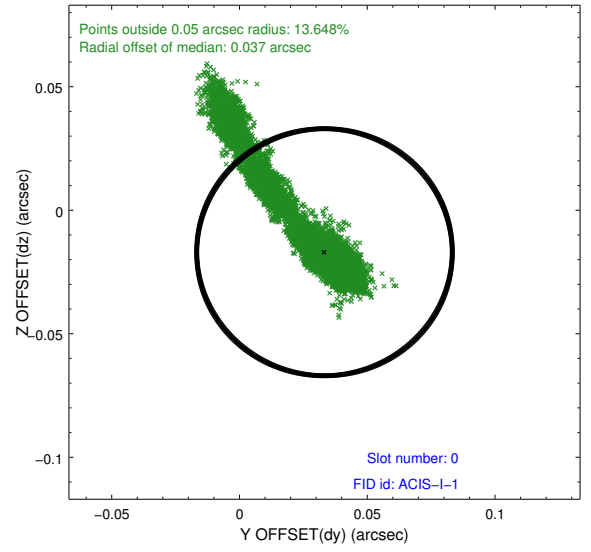
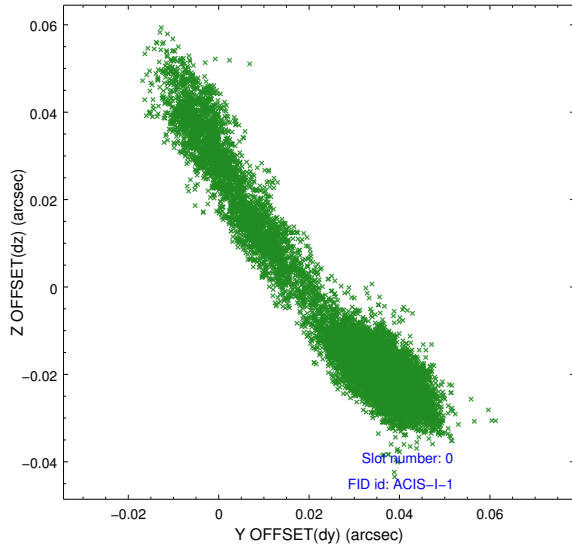


2.4.5 Slot 7

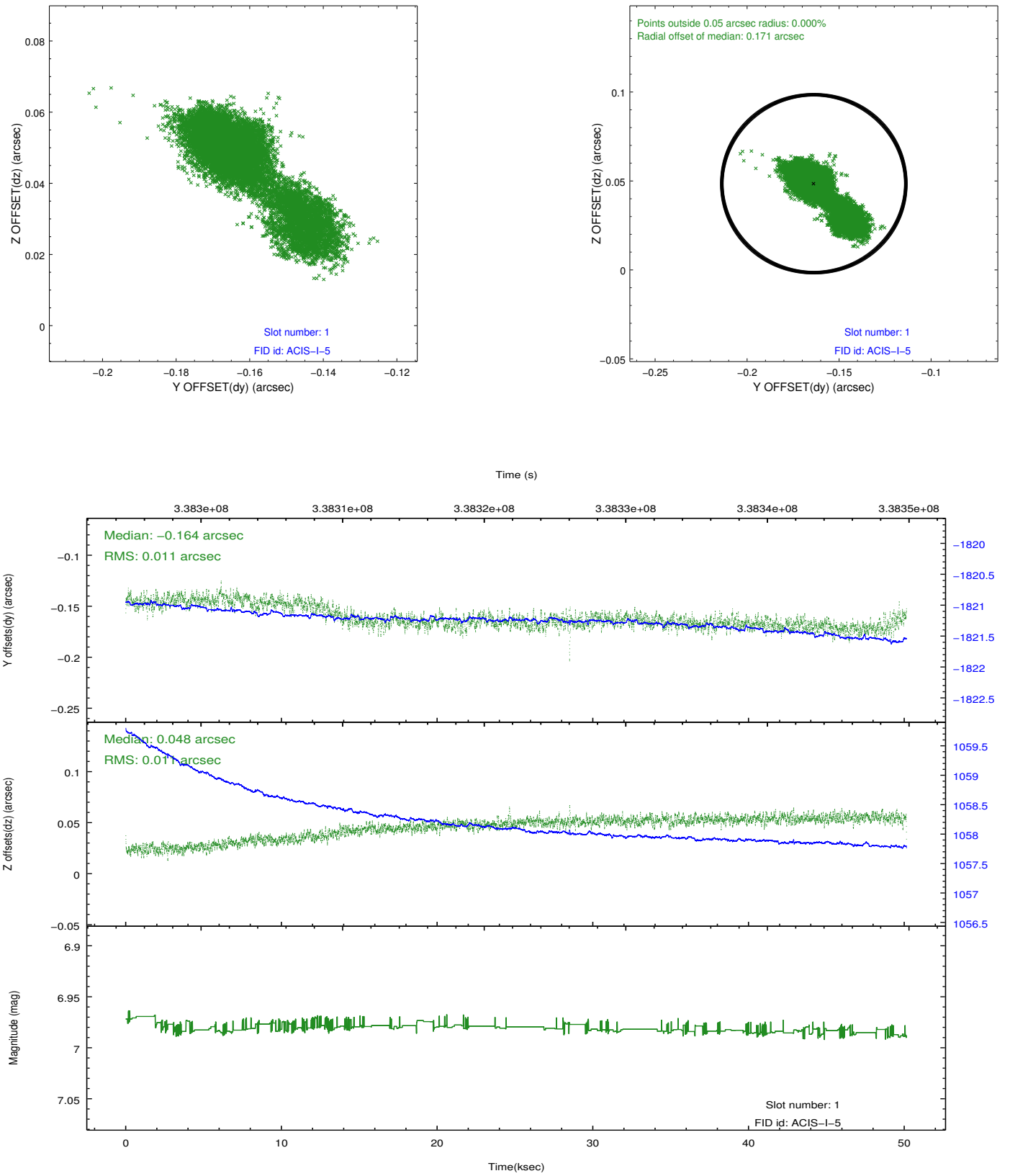


2.5 FID Slots

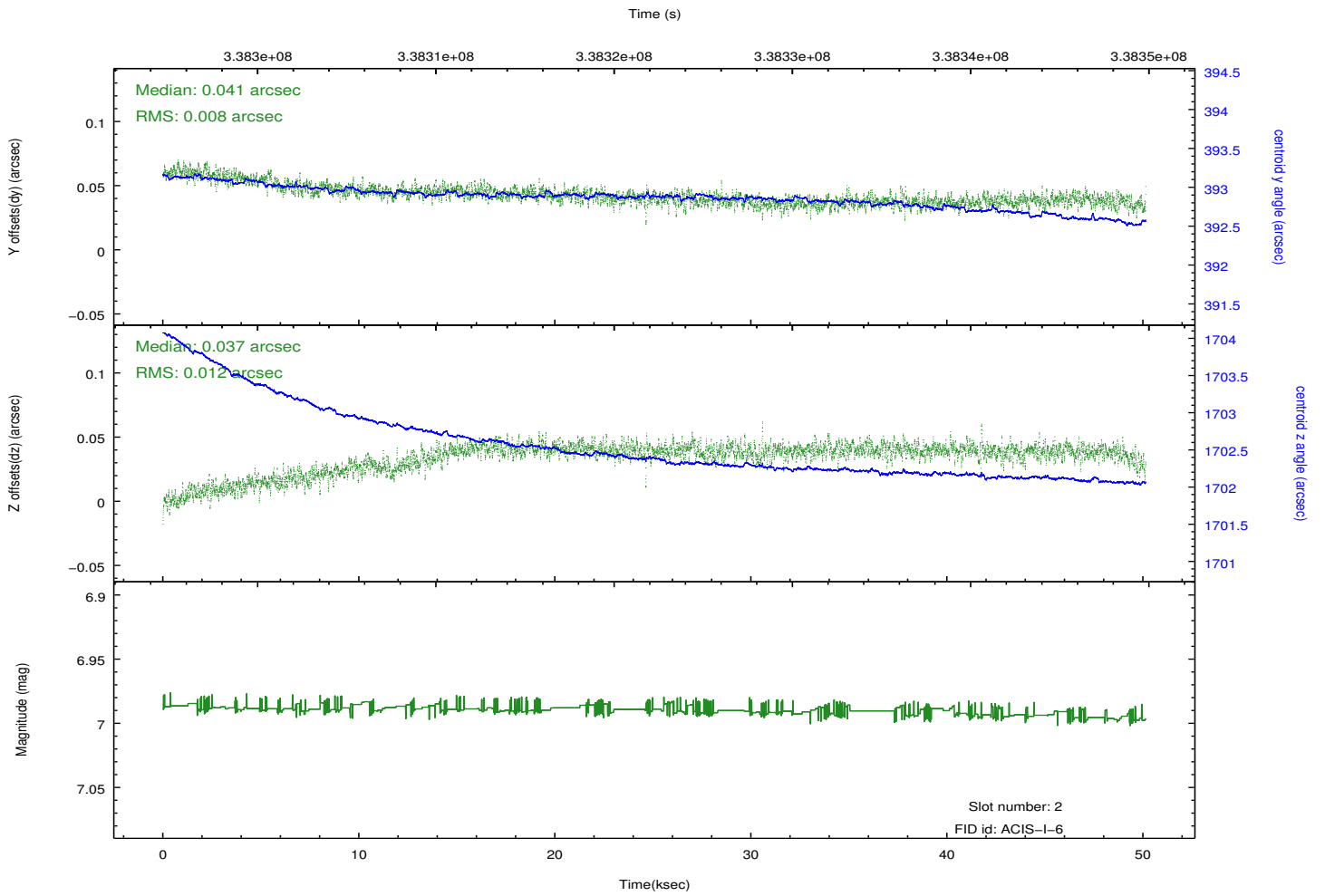
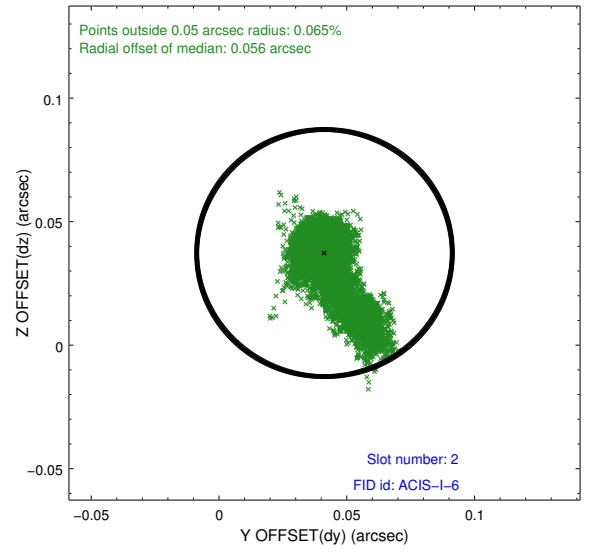
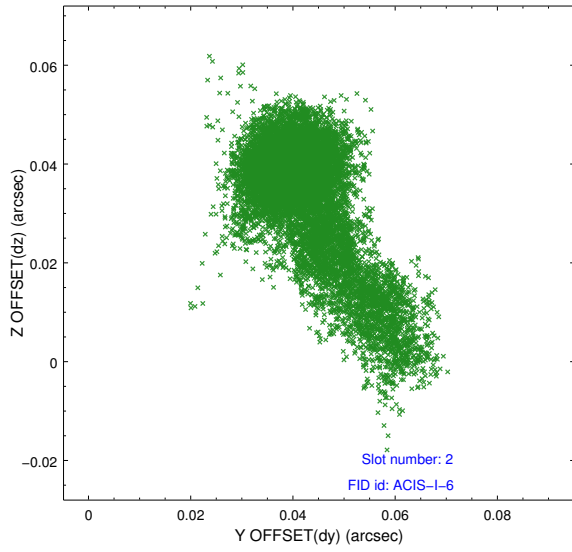
2.5.1 Slot 0



2.5.2 Slot 1



2.5.3 Slot 2



A Summary

A.1 Status

V&V Scientist	Jen Lauer
V&V Date (YYYY-MM-DD)	2012.05.30
V&V Edition	1
V&V Disposition and Status	OK
V&V Charge Time	50.1363003

A.2 Comments

Joint Proposal: Spitzer. Roll constraint met.