

V&V Reference Report

L2 ASCDS Version : 8.4.4

Observation 9836 - L2 Version 2
Chandra X-Ray Center

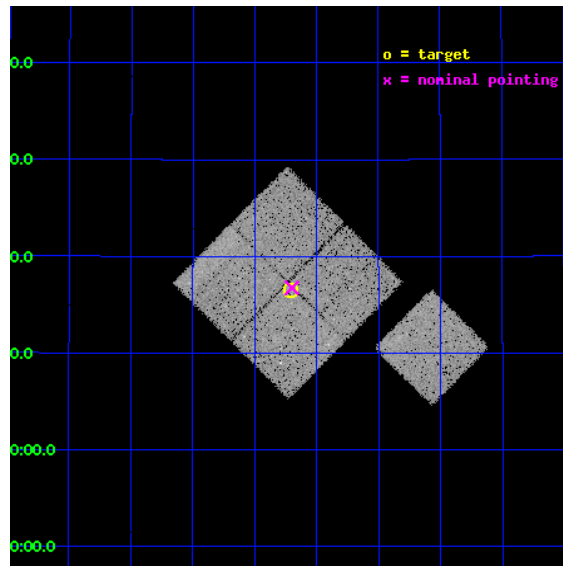
L2 Processing Date : May 11 2012

Contents

1	Front	2
2	OBI	3
2.1	OBI	3
2.1.1	Images	3
2.1.2	Bias	3
2.1.3	Parameters	4
2.1.4	Events	4
2.2	Compared Parameters	5
2.3	Aspect	6
2.4	Star Slots	9
2.4.1	Slot 3	9
2.4.2	Slot 4	10
2.4.3	Slot 5	11
2.4.4	Slot 6	12
2.4.5	Slot 7	13
2.5	FID Slots	14
2.5.1	Slot 0	14
2.5.2	Slot 1	15
2.5.3	Slot 2	16
A	Summary	17
A.1	Status	17
A.2	Comments	17

1 Front

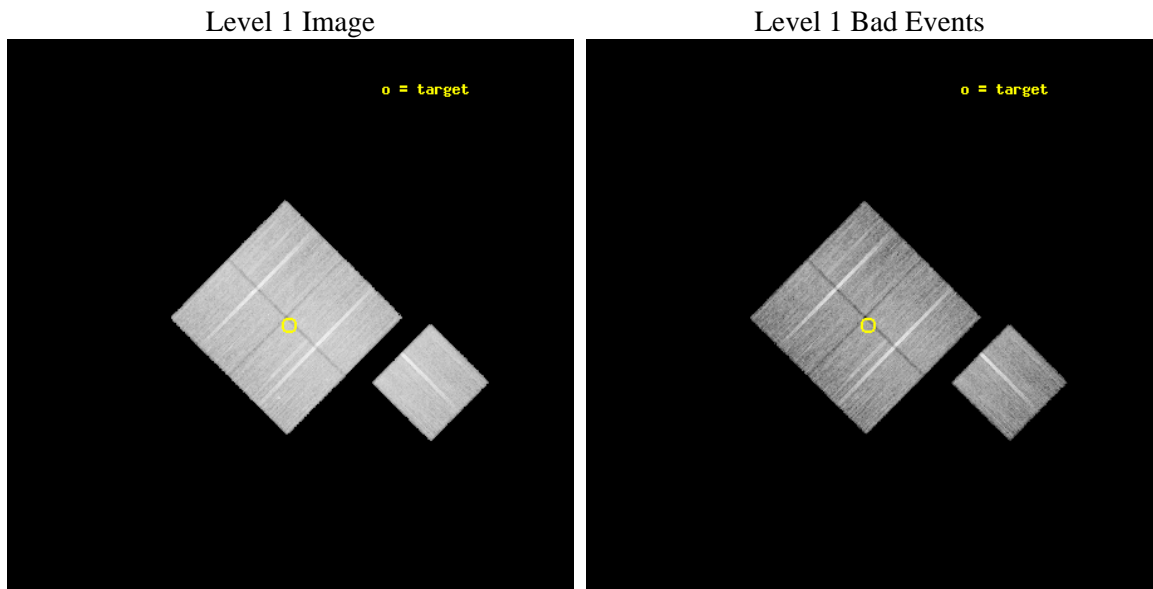
seq_num	800741	Sequence number
obs_id	9836	Observation id
title	The Active Galaxy Population in a Supercluster at z = 0.7	Proposal
observer	Prof Lori Lubin	Principal investigator
object	SC1324+3016	Source name
dtcycle	0	
cycle	P	events from which exps? Prim/Second/Both
ra_targ	201.177083	Observer's specified target RA [deg]
dec_targ	30.275	Observer's specified target Dec [deg]
ra_nom	201.17495266905	Nominal RA [deg]
dec_nom	30.279330119874	Nominal Dec [deg]
roll_nom	134.70975271238	Nominal Roll [deg]
revision	2	Processing version of data
ontime	20267.718195319	Sum of GTIs [s]
liveltime	20002.90553622	Livetime [s]
ontime0	20270.859185636	Sum of GTIs [s]
ontime1	20270.859185636	Sum of GTIs [s]
ontime2	20274.000155926	Sum of GTIs [s]
ontime3	20267.718195319	Sum of GTIs [s]
ontime6	20270.859155715	Sum of GTIs [s]
l2events	68542	Number of level 2 events



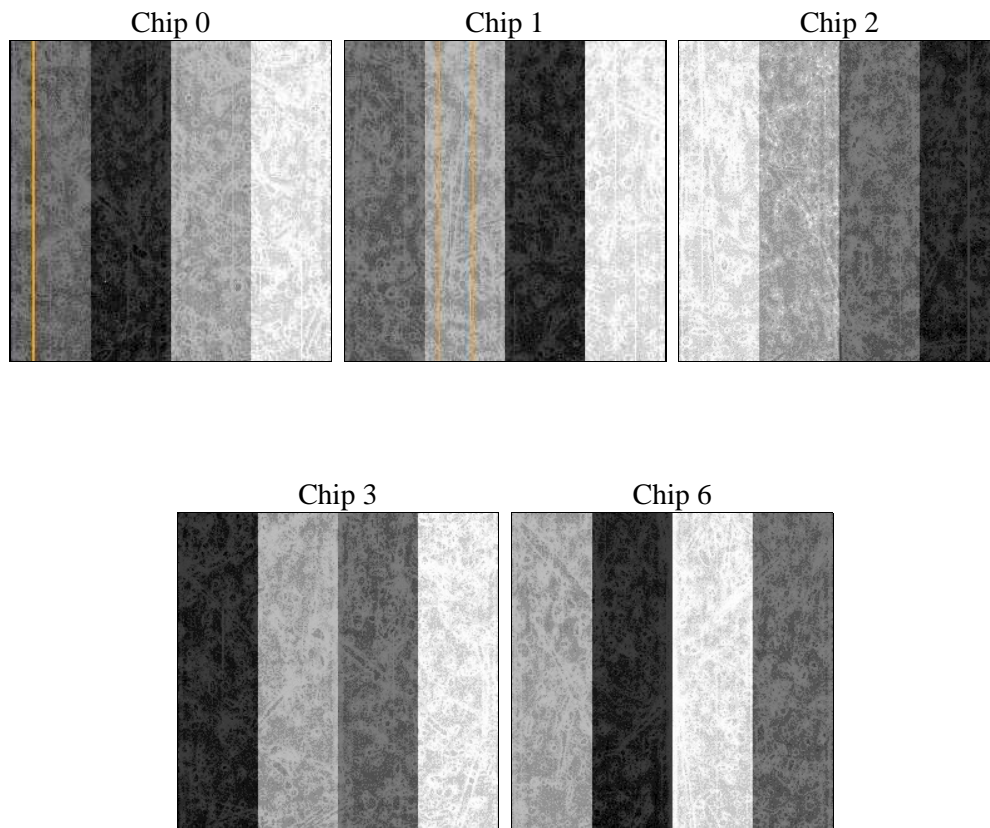
2 OBI

2.1 OBI

2.1.1 Images



2.1.2 Bias



2.1.3 Parameters

obi_num	0	Obi number	sched_exp_time	20500.000000	[s] Scheduled observation exposure time
ascdsver	8.4.4	Processing system revision	ontime	20267.718195319	Sum of GTIs [s]
caldbver	4.4.9	 	ontime0	20270.859185636	Sum of GTIs [s]
date	2012-05-11T13:37:57	Date and time of file creation	ontime1	20270.859185636	Sum of GTIs [s]
revision	2	Processing version of data	ontime2	20274.000155926	Sum of GTIs [s]
			ontime3	20267.718195319	Sum of GTIs [s]
			ontime6	20270.859155715	Sum of GTIs [s]
			l1events	791025	Number of level 1 events

2.1.4 Events

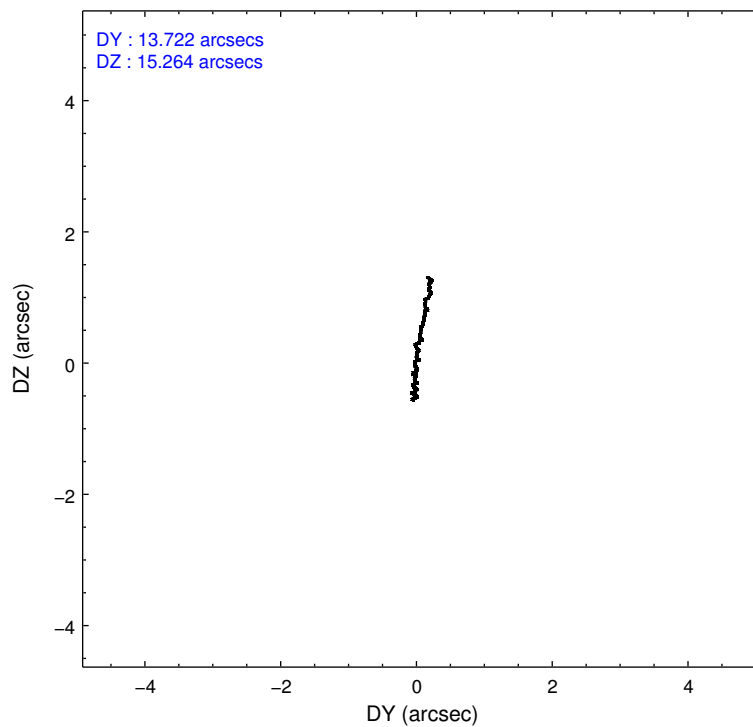
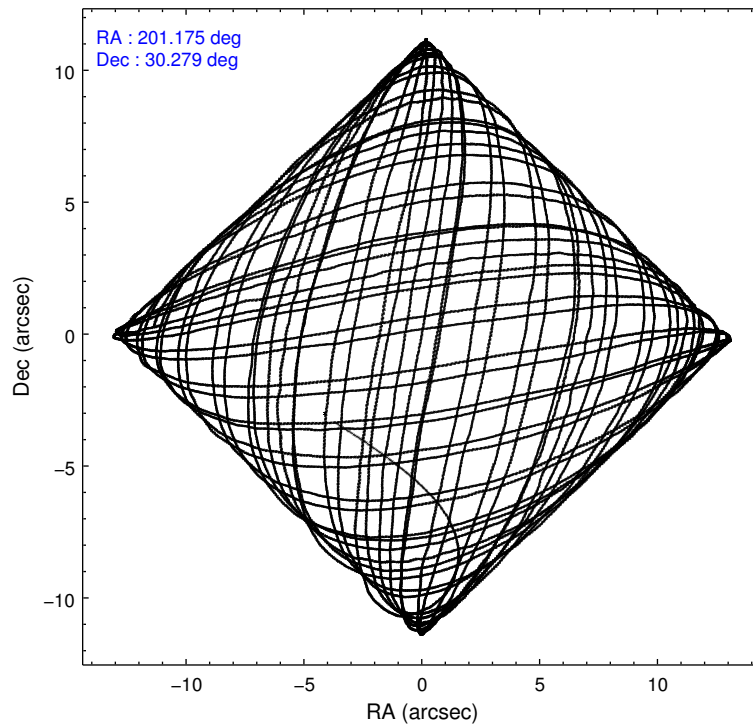
	ccd 0	ccd 1	ccd 2	ccd 3	ccd 6
level 1 events	152239	147028	171252	162731	157775
rejected events	136051	128563	155337	146974	141404
rejected %	89%	87%	90%	90%	89%

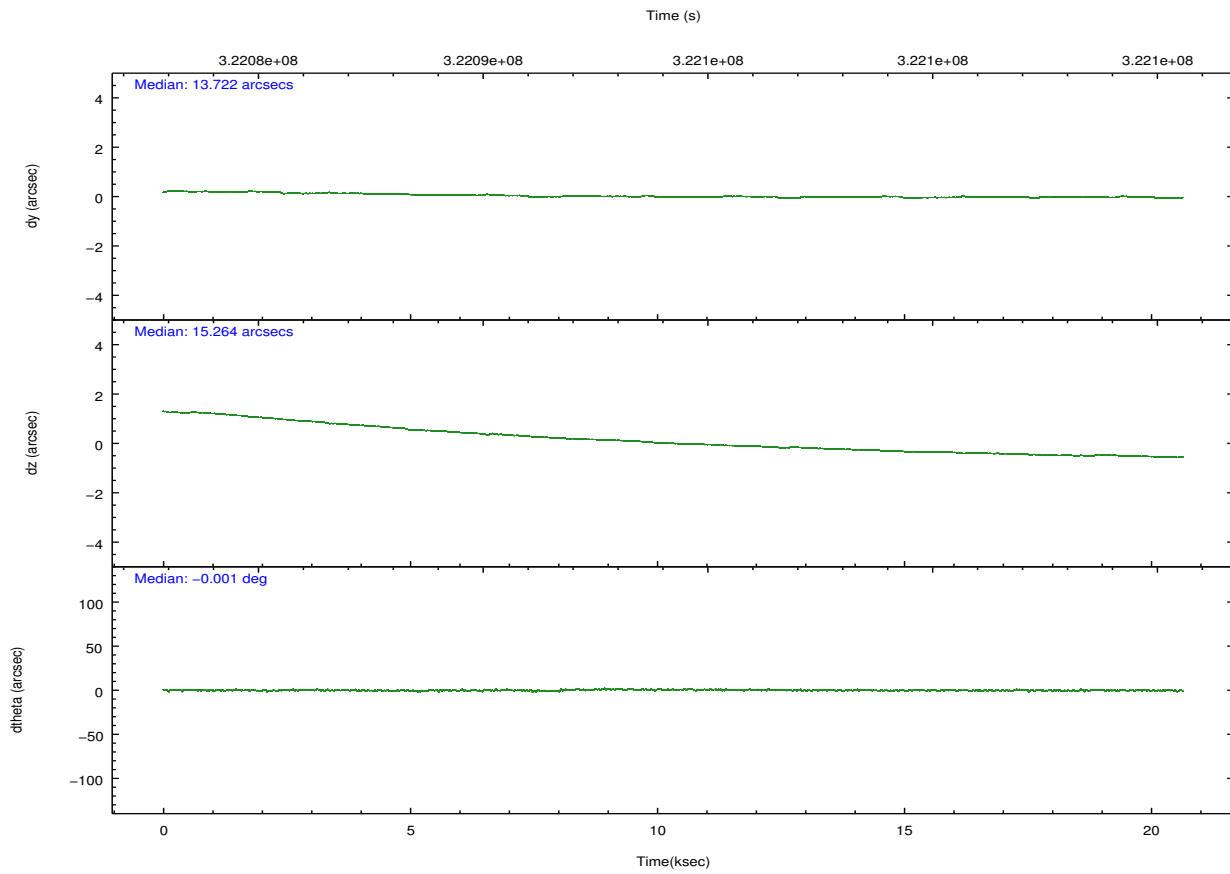
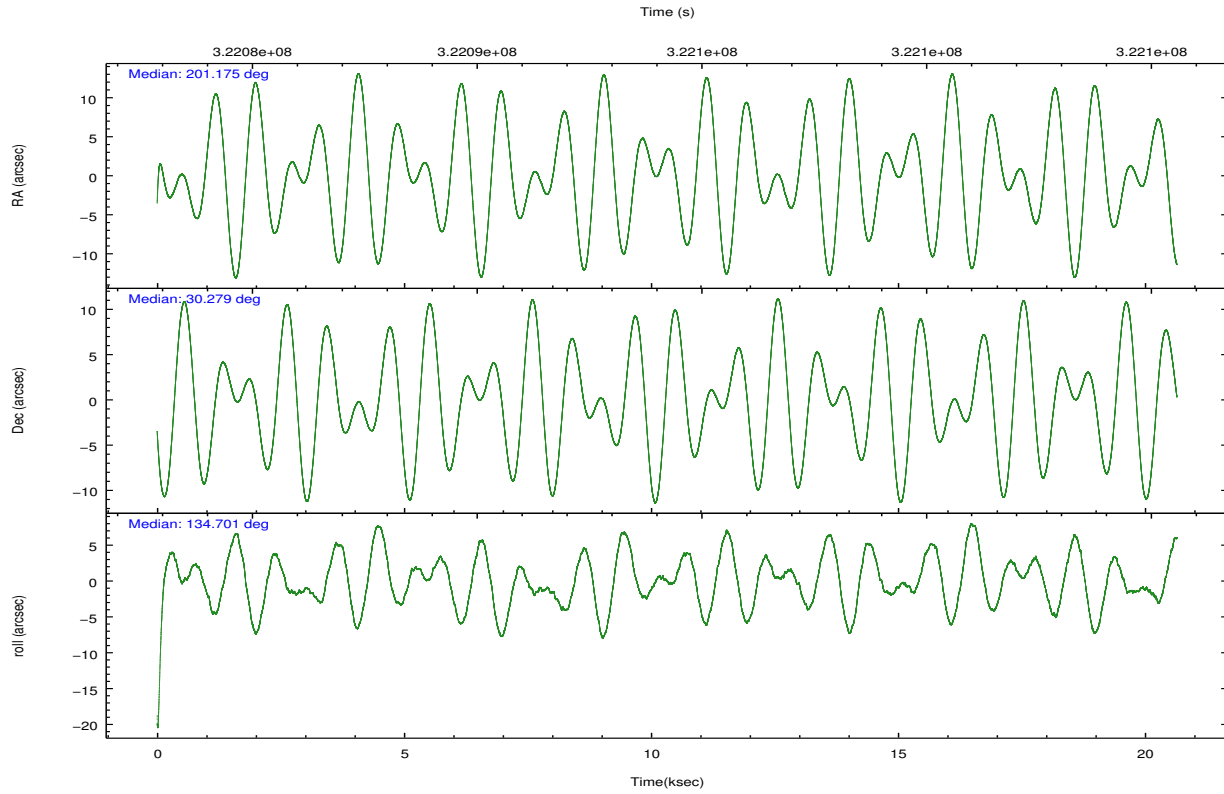
	ccd 0	ccd 1	ccd 2	ccd 3	ccd 6
grade 0 events	5518	6730	5685	5711	5635
	3%	4%	3%	3%	3%
grade 1 events	79	81	94	90	68
	0%	0%	0%	0%	0%
grade 2 events	4050	4005	3803	3554	3626
	2%	2%	2%	2%	2%
grade 3 events	1932	1964	1670	1782	1827
	1%	1%	0%	1%	1%
grade 4 events	1690	1960	1703	1696	1765
	1%	1%	0%	1%	1%
grade 5 events	5675	6167	5305	6657	6411
	3%	4%	3%	4%	4%
grade 6 events	3001	3808	3056	3016	3519
	1%	2%	1%	1%	2%
grade 7 events	130294	122313	149936	140225	134924
	85%	83%	87%	86%	85%

2.2 Compared Parameters

Parameter	Planned	Actual	Parameter	Planned	Actual
Instrument	ACIS	ACIS	Obspar format version number	7	7
Detector	ACIS-01236	ACIS-01236	Obspar file type	PREDICTED	ACTUAL
Grating	NONE	NONE	Obspar update status	NONE	UPDATED
Data mode	VFAINT	VFAINT	CCD I0 on	Y	Y
Observation mode	POINTING	POINTING	CCD I1 on	Y	Y
[deg] Pointing RA	201.205717	201.1749526690477	CCD I2 on	Y	Y
[deg] Pointing Dec	30.272185	30.27933011987401	CCD I3 on	Y	Y
[deg] Pointing Roll	134.485564	134.7097527123825	CCD S0 on	N	N
[mm] SIM focus pos	-0.782348	-0.7809083437167272	CCD S1 on	N	N
[mm] SIM defocus	0	0.001439871863259334	CCD S2 on	O1	Y
[mm] SIM translation stage pos	-233.592463	-233.5874344608287	CCD S3 on	N	N
[mm] SIM translation stage offset	0	-0.005018542100998502	CCD S4 on	N	N
[s] Observation start time (MET)	322084039.184000	322082846.65819	CCD S5 on	N	N
Observation start date	2008-03-16T19:46:14	2008-03-16T19:27:26	Number of optional ACIS chips dropped	0	0
[s] Observation end time (MET)	322104539.184000	322106140.80933	On-chip summing requested	N	N
Observation end date	2008-03-17T01:27:54	2008-03-17T01:55:40	Subarray requested	NONE	NONE
Read mode	TIMED	TIMED	Alternating exposures requested	N	N
			[s] Primary exposure time	0.000000	3.1

2.3 Aspect



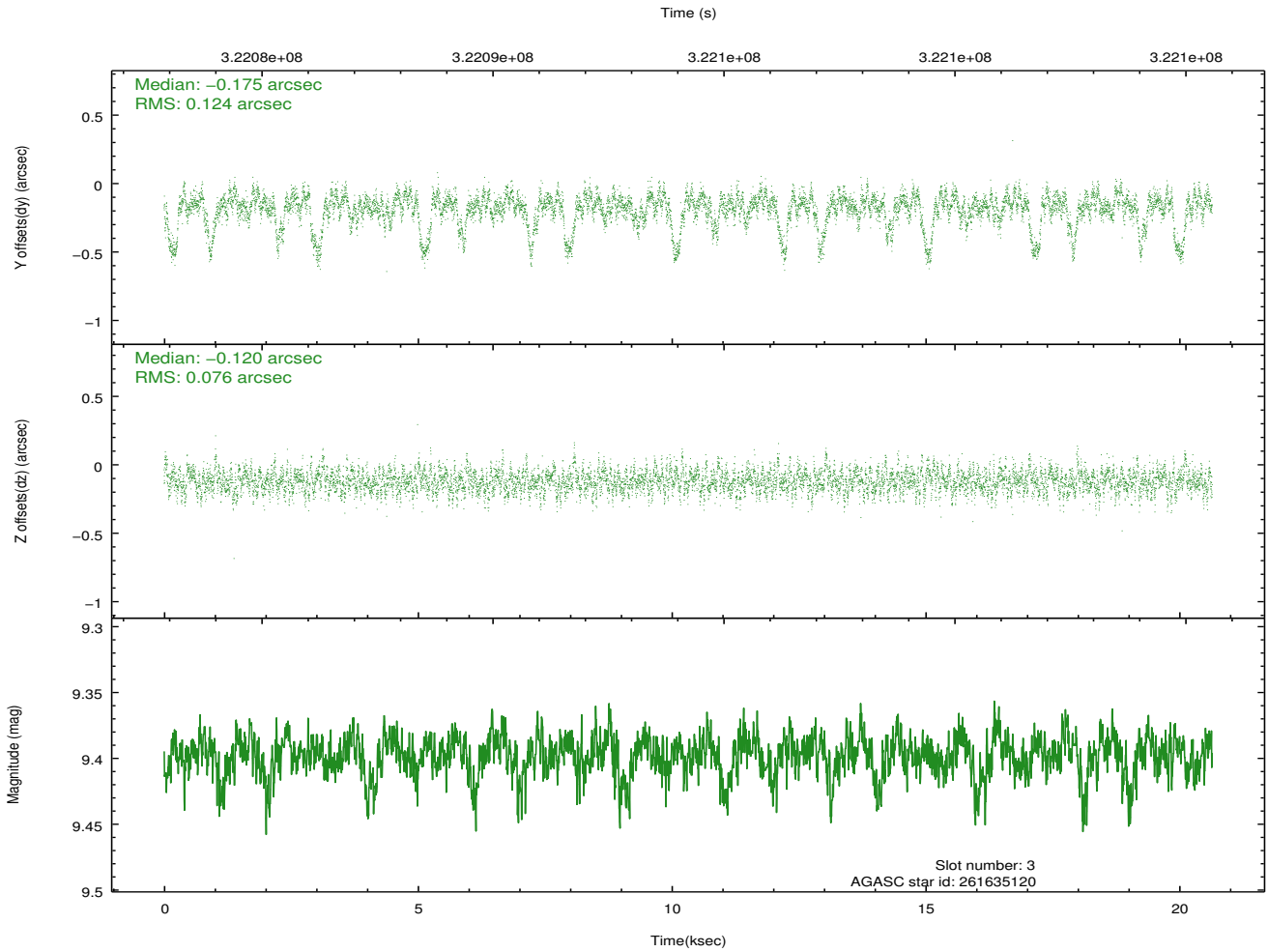
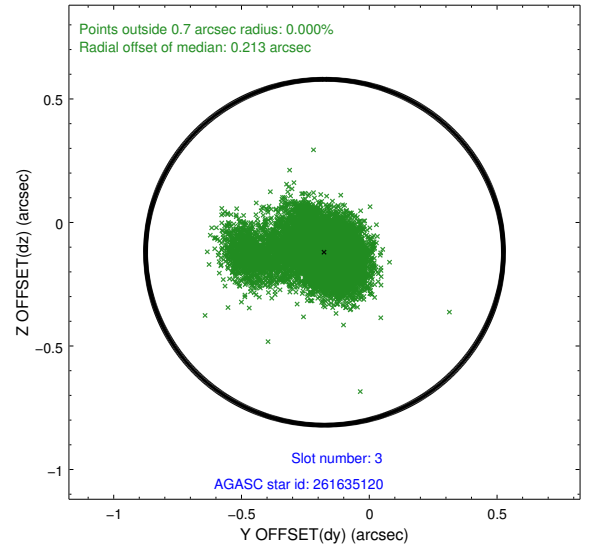
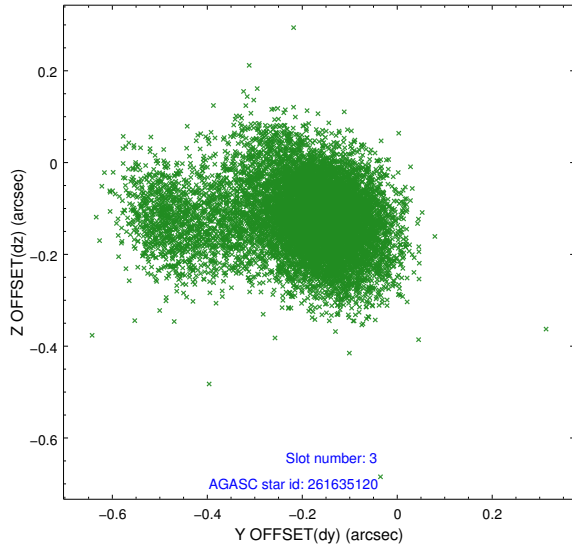


Slot Statistics

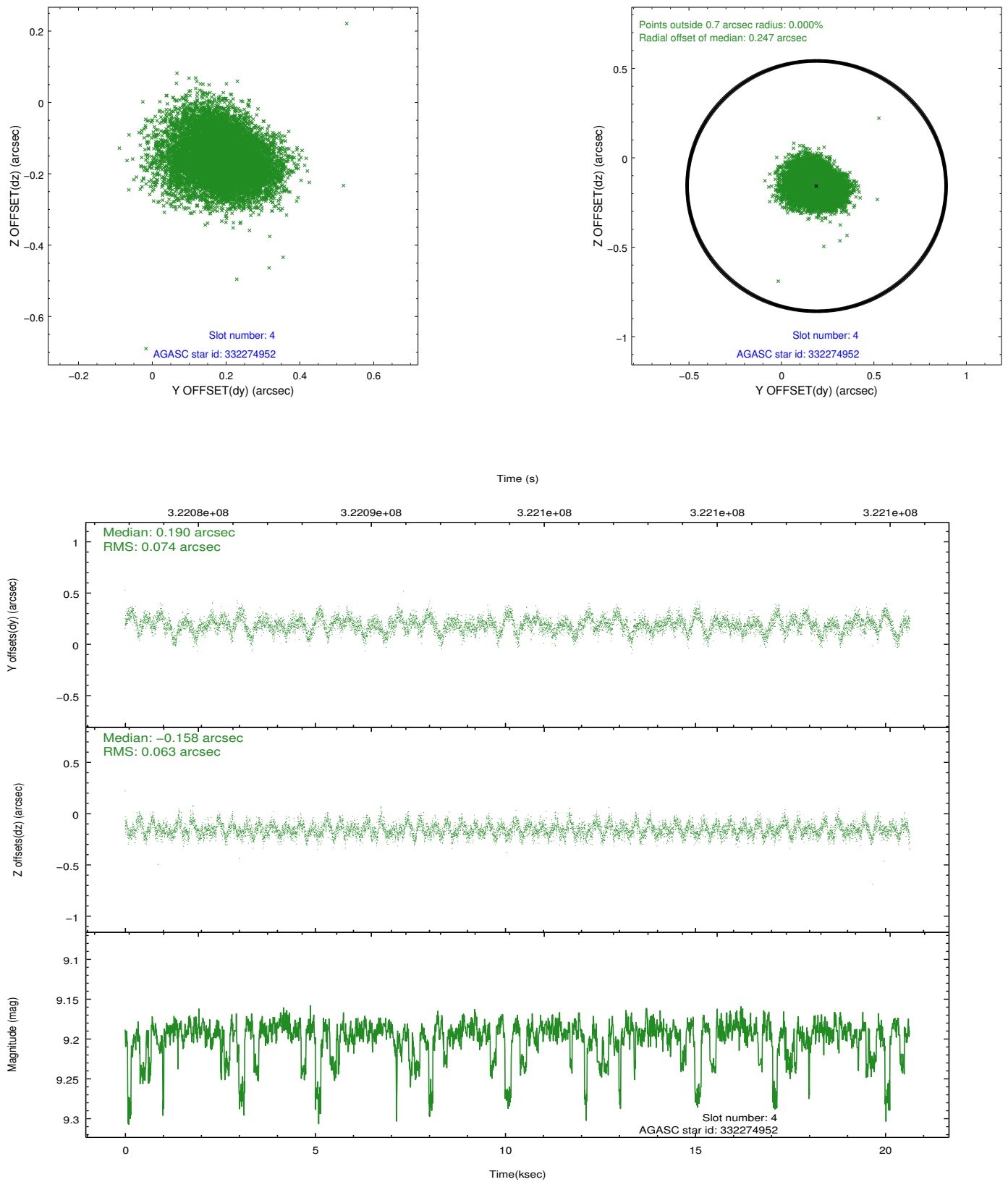
slot	status	id	mag	n_pts	med_dy	med_dz	dr1	dr2	ra	dec	mean_y	mean_z
0	FID	ACIS-I-1	7.23	5036	-0.007	-0.011	0.049	0.090	0.000000	0.000000	925.72	-839.06
1	FID	ACIS-I-4	7.15	5036	0.154	0.035	0.035	0.062	0.000000	0.000000	2146.05	1060.72
2	FID	ACIS-I-5	7.22	5036	-0.246	0.048	0.018	0.029	0.000000	0.000000	-1822.27	1058.83
3	GUIDE	261635120	9.40	10059	-0.175	-0.120	0.134	0.308	200.629723	29.931982	388.47	2137.03
4	GUIDE	332274952	9.19	10030	0.190	-0.158	0.103	0.167	200.863262	30.539141	1431.19	83.75
5	GUIDE	332402160	8.13	10067	0.014	0.087	0.064	0.102	201.528672	30.702288	406.40	-1798.80
6	GUIDE	332274608	9.11	10069	0.091	0.020	0.085	0.143	200.411227	30.522072	2375.10	1121.86
7	GUIDE	332400040	8.90	10009	-0.094	0.169	0.087	0.135	201.663081	30.837002	462.83	-2434.84

2.4 Star Slots

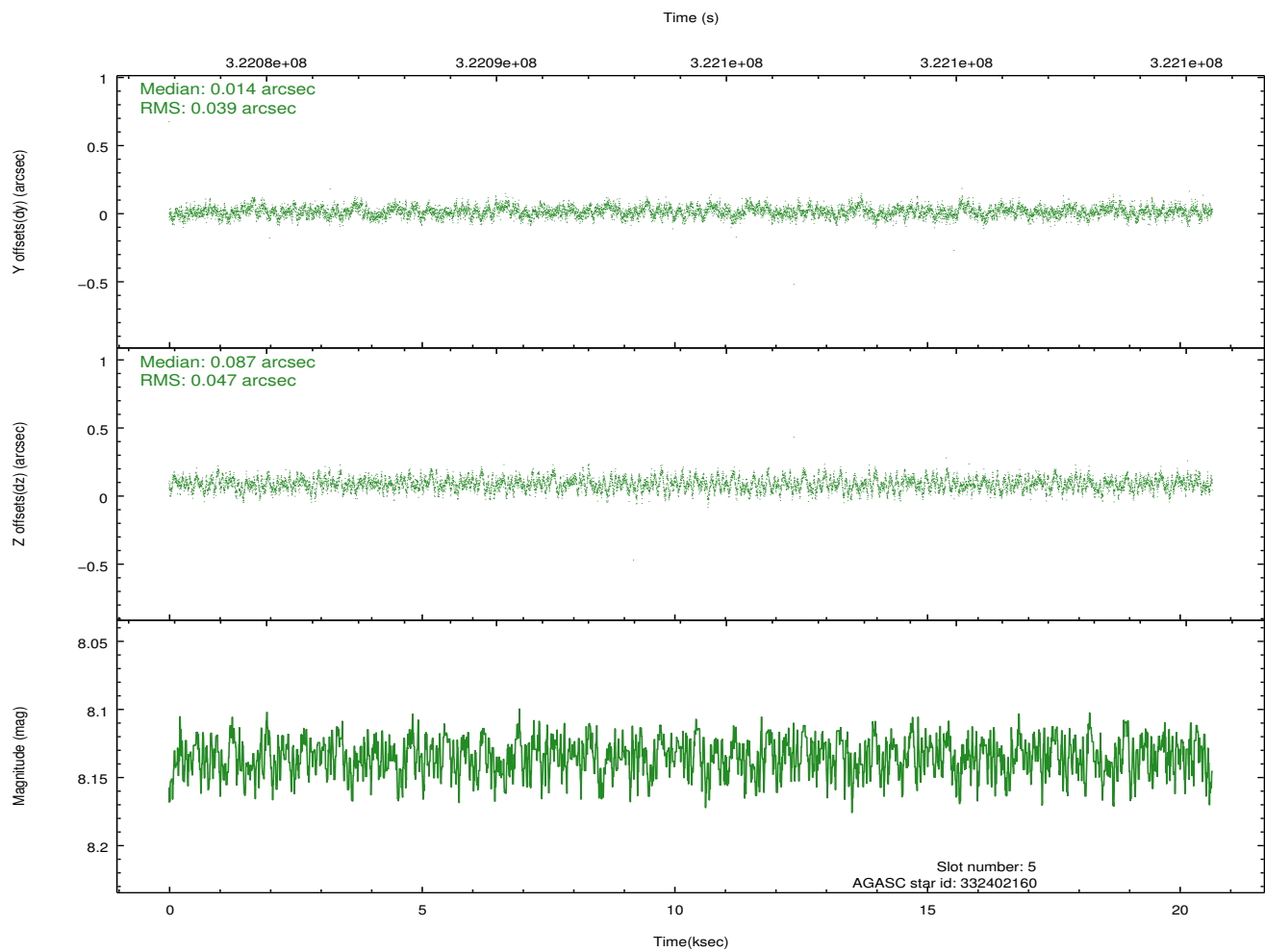
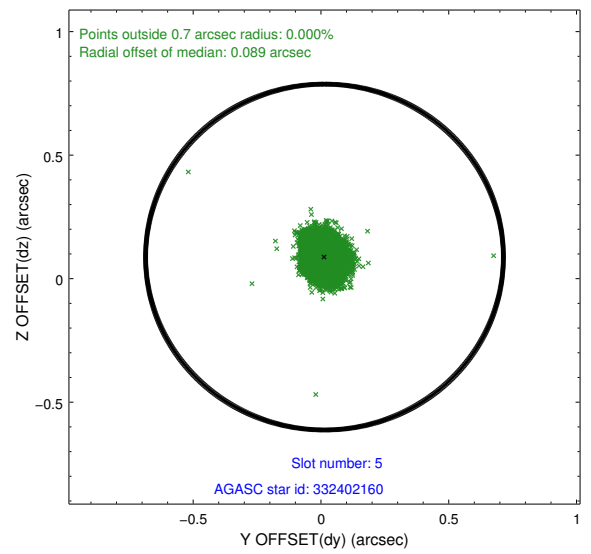
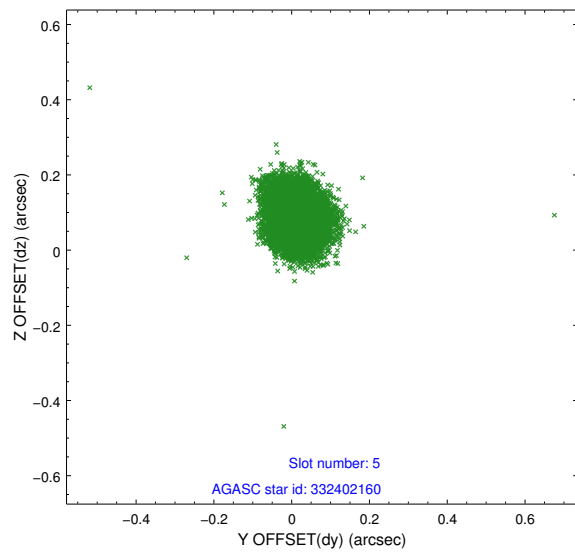
2.4.1 Slot 3



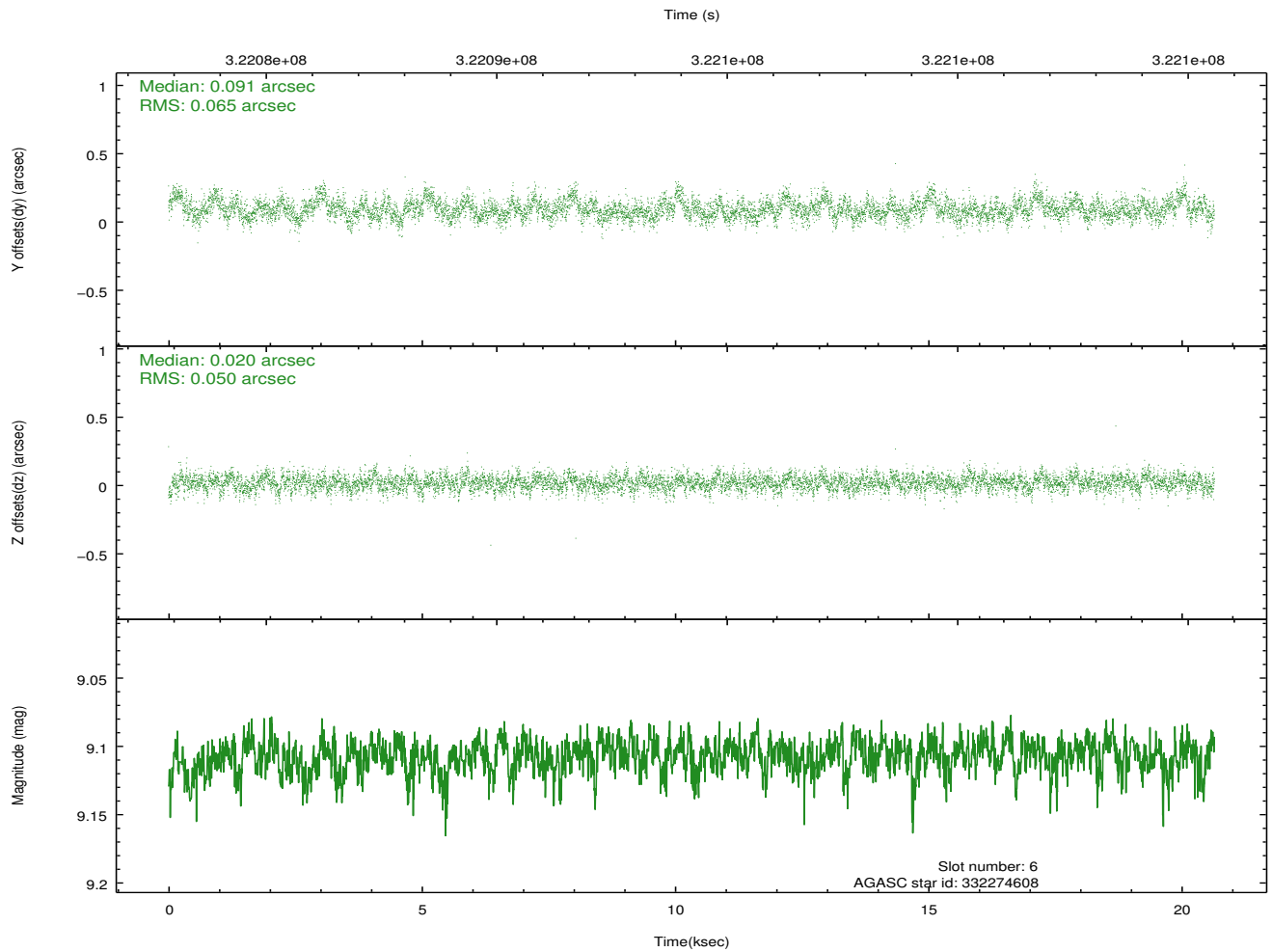
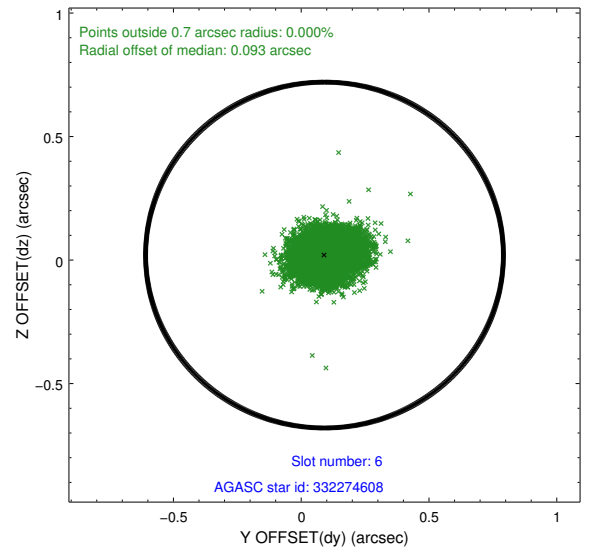
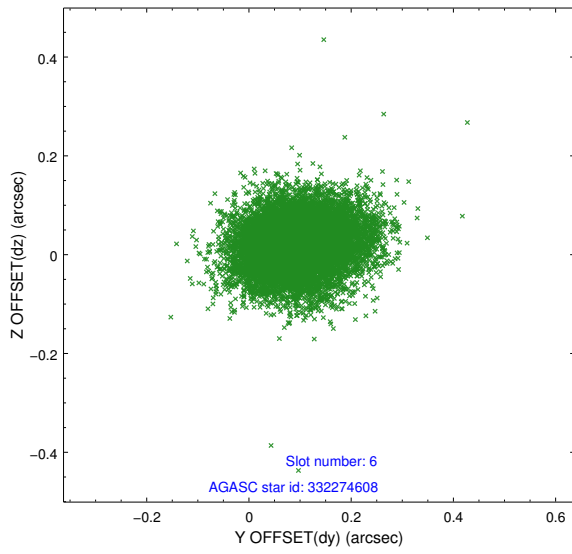
2.4.2 Slot 4



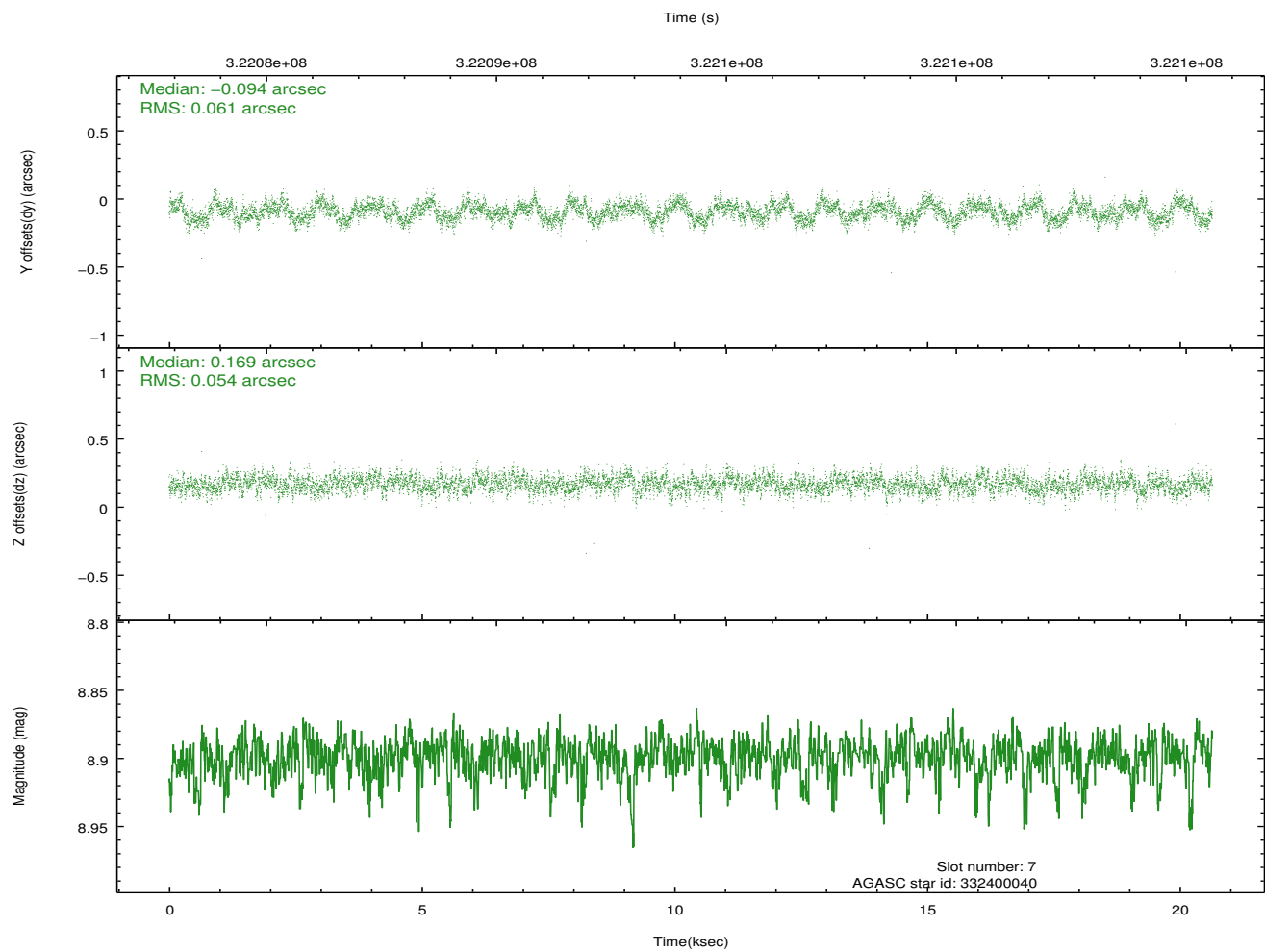
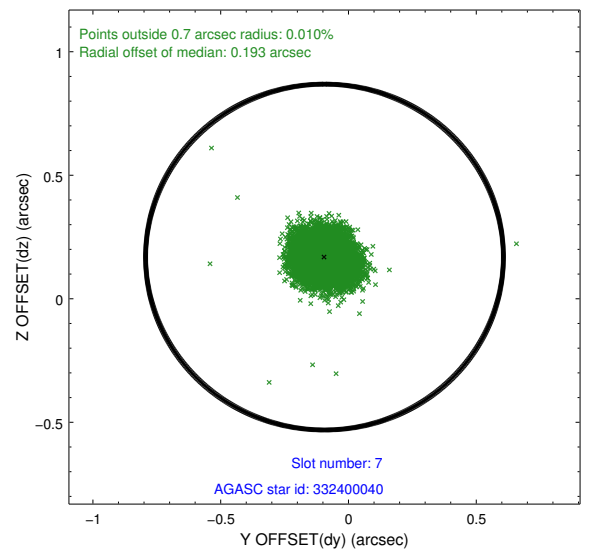
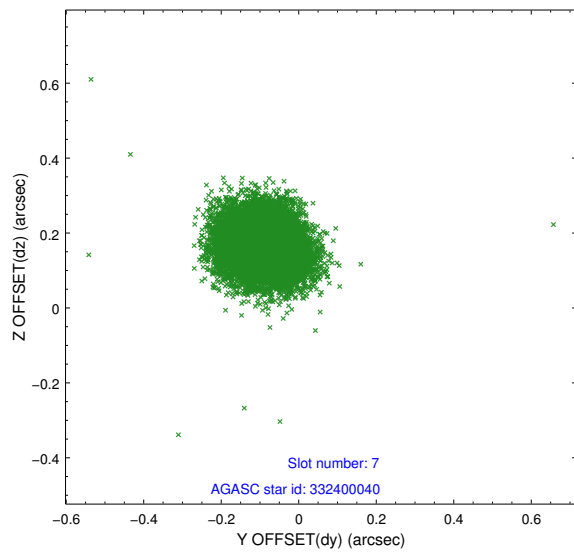
2.4.3 Slot 5



2.4.4 Slot 6

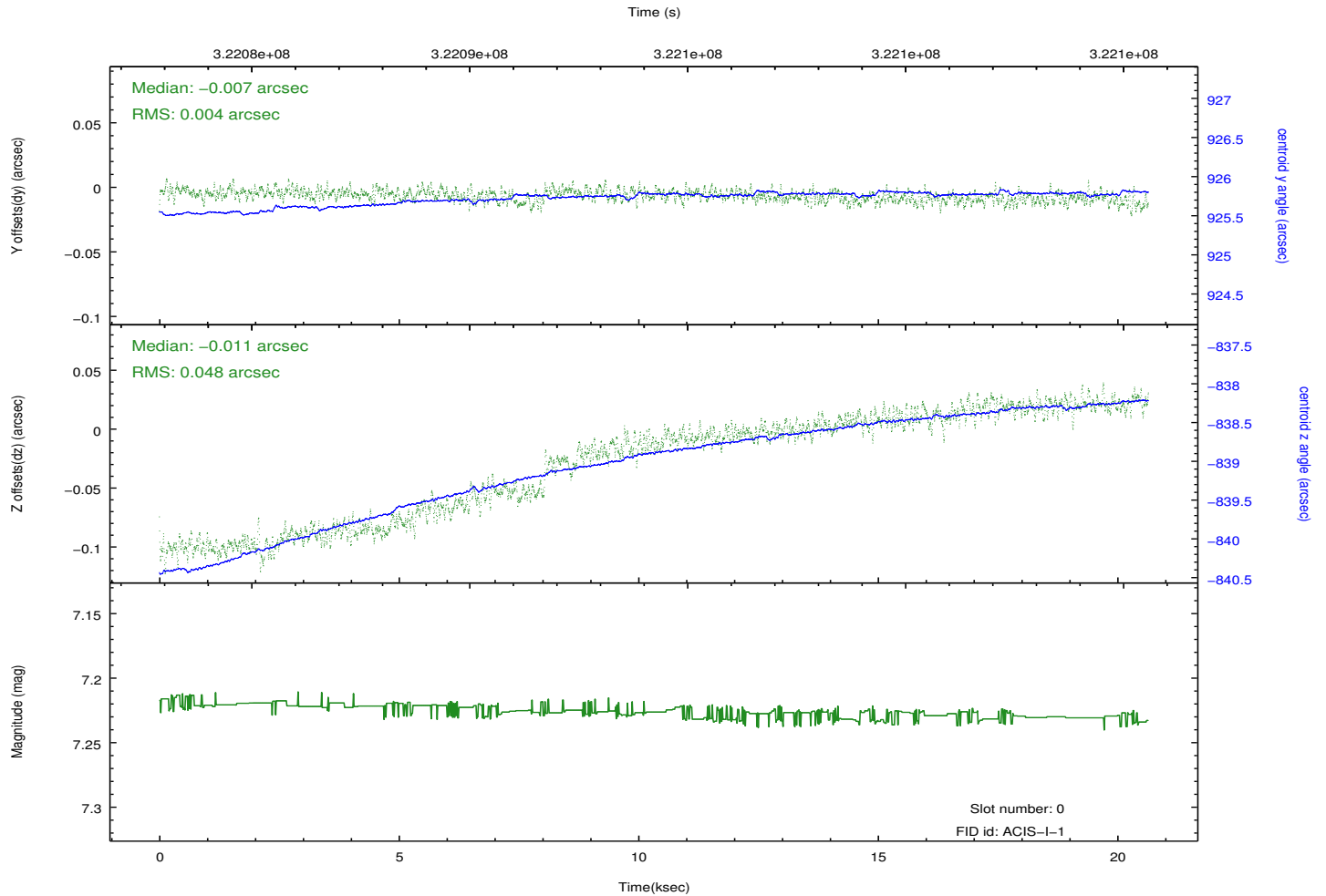
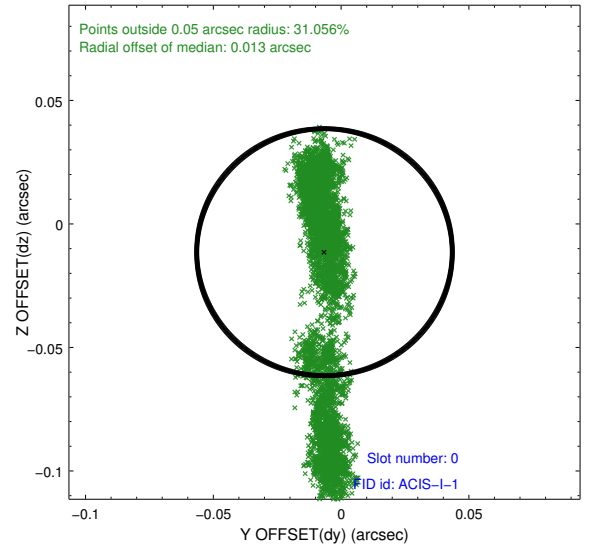
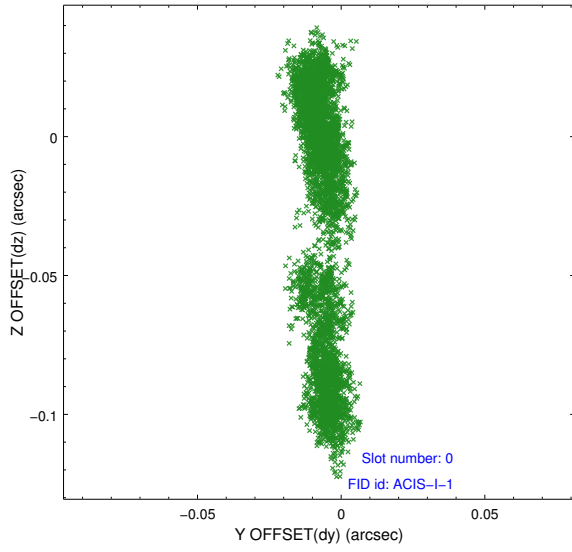


2.4.5 Slot 7

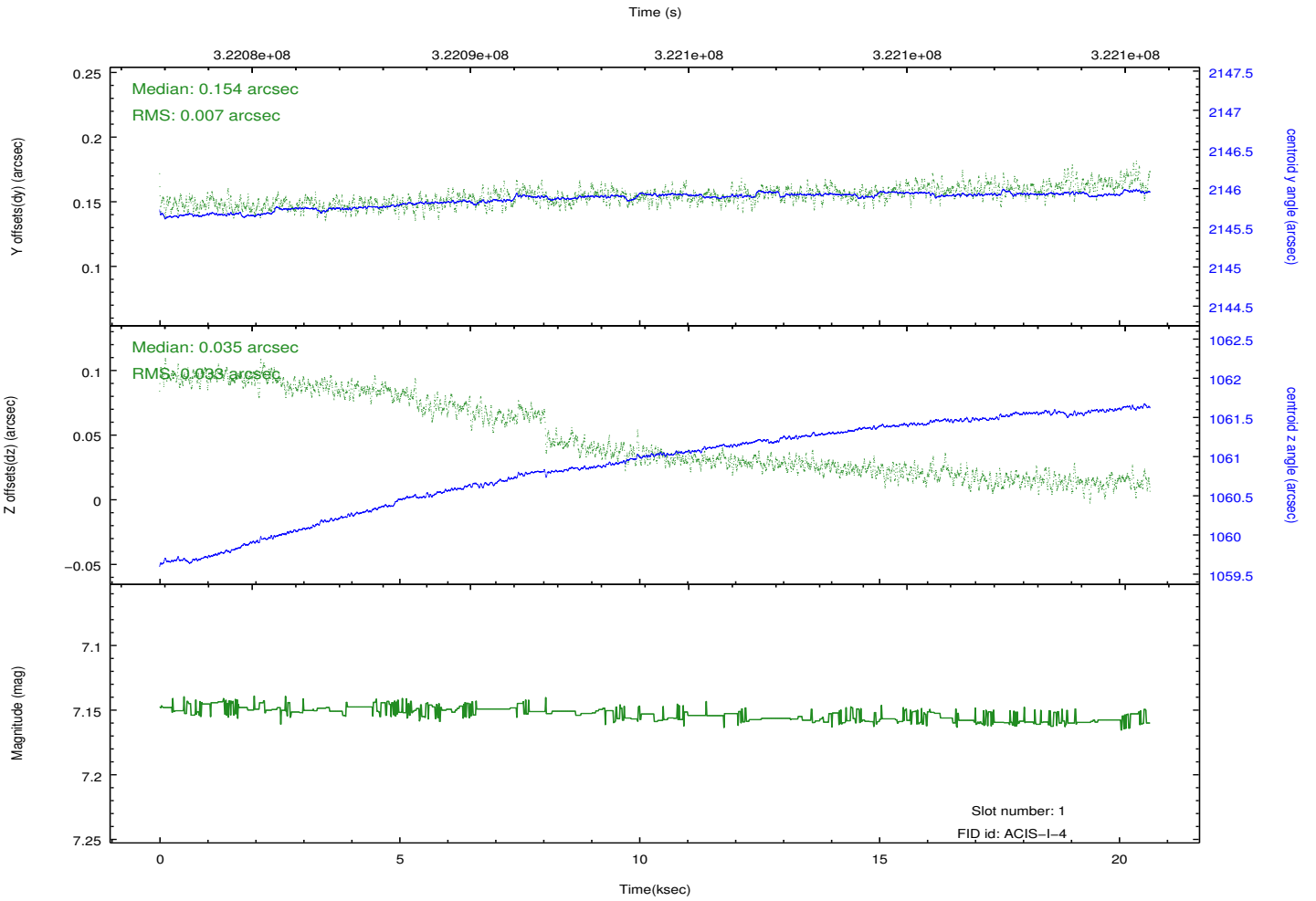
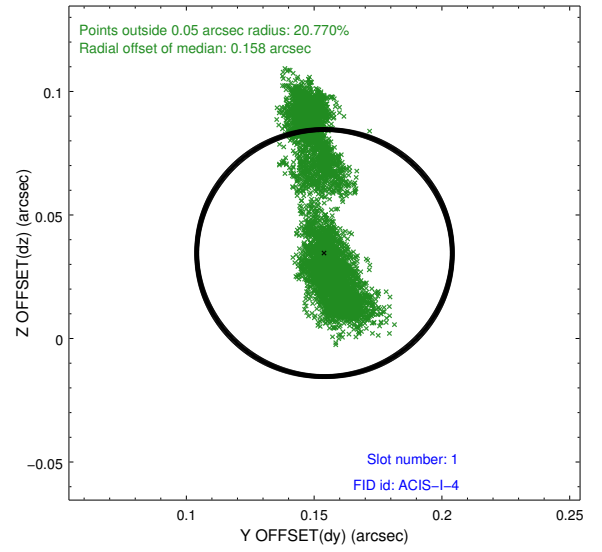
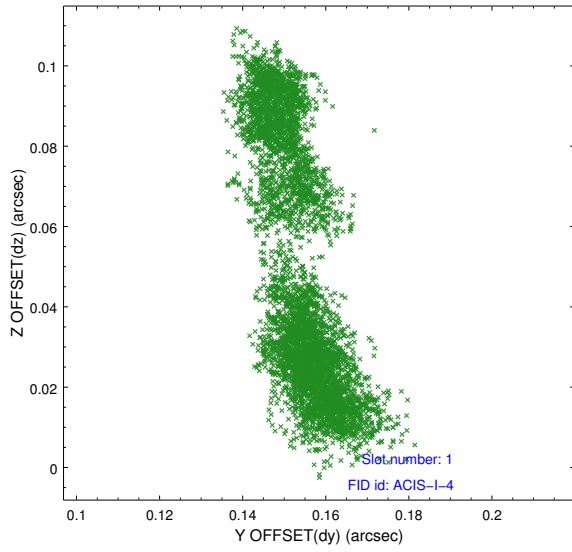


2.5 FID Slots

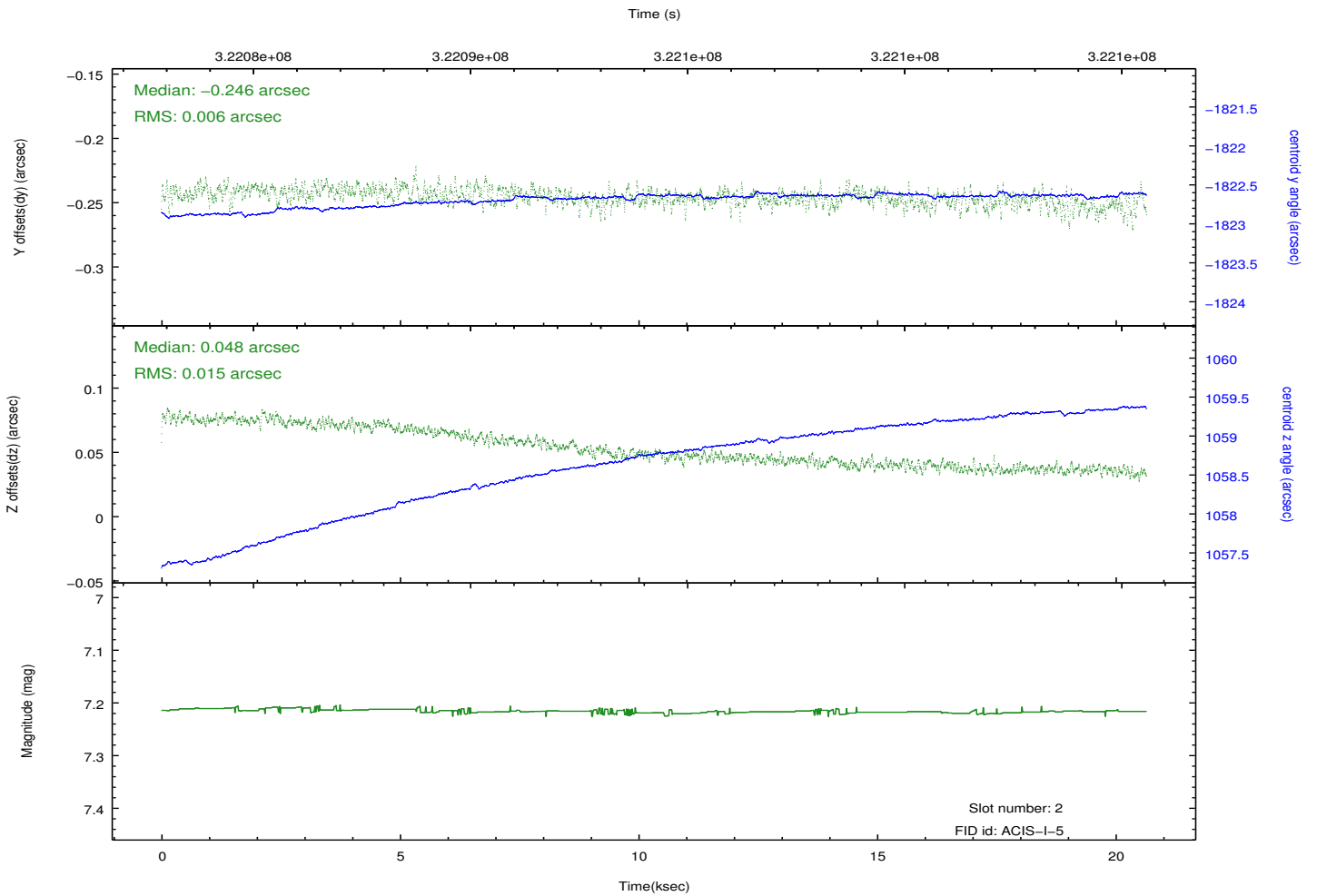
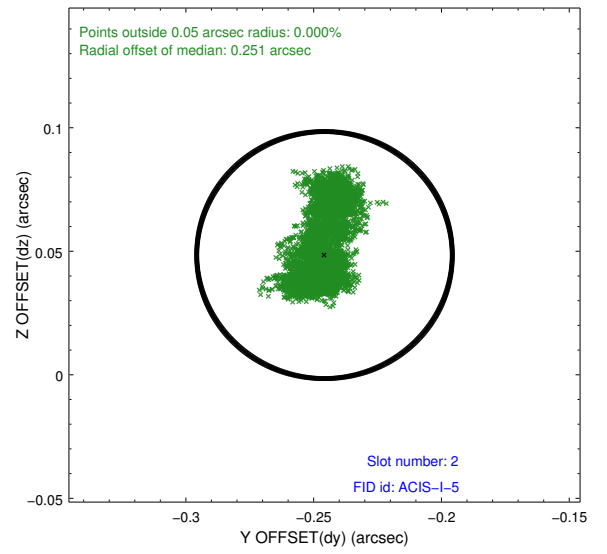
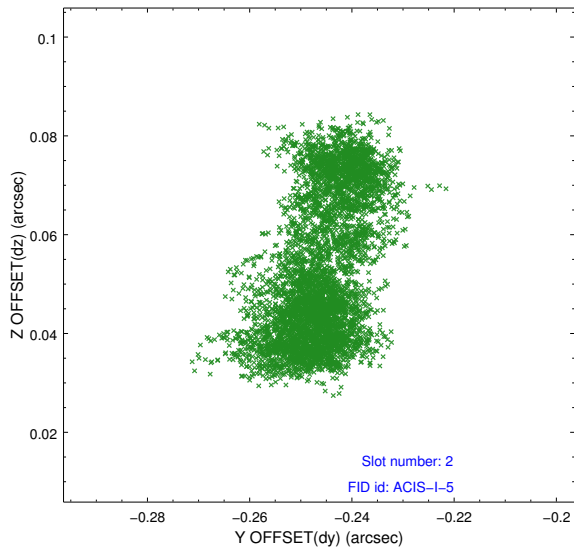
2.5.1 Slot 0



2.5.2 Slot 1



2.5.3 Slot 2



A Summary

A.1 Status

V&V Scientist	Jen Lauer
V&V Date (YYYY-MM-DD)	2012.05.14
V&V Edition	1
V&V Disposition and Status	OK
V&V Charge Time	20.2677181

A.2 Comments

Joint Proposal: NRAO