

# V&V Reference Report

## L2 ASCDS Version : 8.4.4

Observation 9876 - L2 Version 2  
Chandra X-Ray Center

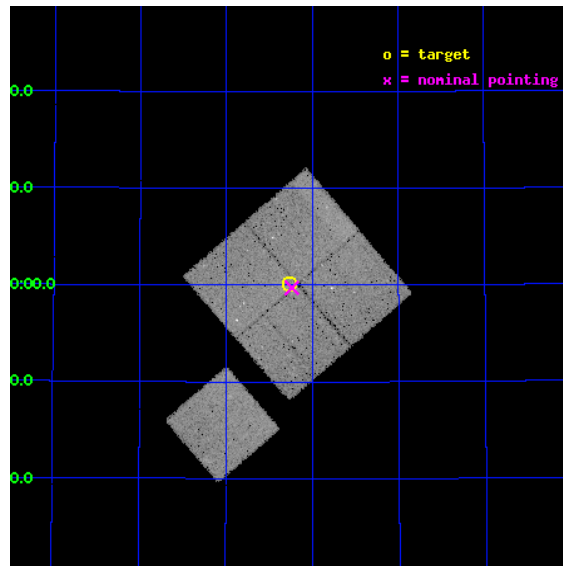
L2 Processing Date : May 17 2012

## Contents

<b>1</b>	<b>Front</b>	<b>2</b>
<b>2</b>	<b>OBI</b>	<b>3</b>
2.1	OBI . . . . .	3
2.1.1	Images . . . . .	3
2.1.2	Bias . . . . .	3
2.1.3	Parameters . . . . .	4
2.1.4	Events . . . . .	4
2.2	Compared Parameters . . . . .	5
2.3	Aspect . . . . .	6
2.4	Star Slots . . . . .	9
2.4.1	Slot 3 . . . . .	9
2.4.2	Slot 4 . . . . .	10
2.4.3	Slot 5 . . . . .	11
2.4.4	Slot 6 . . . . .	12
2.4.5	Slot 7 . . . . .	13
2.5	FID Slots . . . . .	14
2.5.1	Slot 0 . . . . .	14
2.5.2	Slot 1 . . . . .	15
2.5.3	Slot 2 . . . . .	16
<b>A</b>	<b>Summary</b>	<b>17</b>
A.1	Status . . . . .	17
A.2	Comments . . . . .	17

# 1 Front

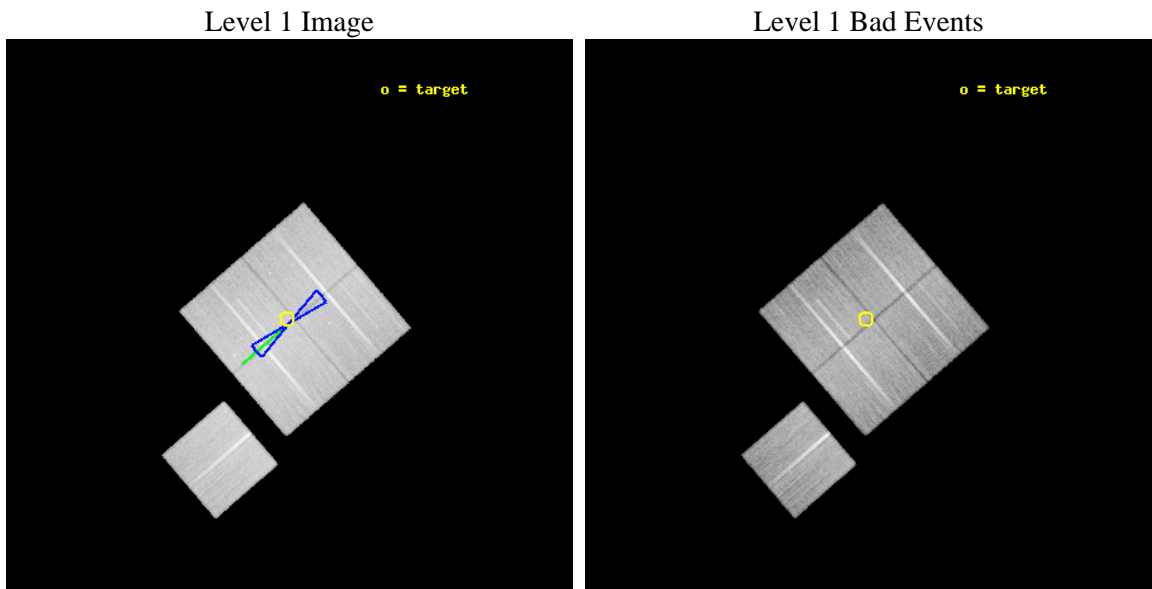
seq_num	900796	Sequence number
obs_id	9876	Observation id
title	The Evolution of Faint AGN at High Redshift	Proposal title
observer	Prof Kirpal Nandra	Principal investigator
object	AEGIS-1	Source name
dtcycle	0	&#160
cycle	P	events from which exps? Prim/Second/Both
ra_targ	215.064583	Observer's specified target RA [deg]
dec_targ	53.002694	Observer's specified target Dec [deg]
ra_nom	215.05920511801	Nominal RA [deg]
dec_nom	52.995284804306	Nominal Dec [deg]
roll_nom	229.21299064466	Nominal Roll [deg]
revision	2	Processing version of data
ontime	33718.577328444	Sum of GTIs [s]
livetime	33278.019292392	Livetime [s]
ontime0	33715.436358392	Sum of GTIs [s]
ontime1	33724.859299123	Sum of GTIs [s]
ontime2	33724.85928905	Sum of GTIs [s]
ontime3	33718.577328444	Sum of GTIs [s]
ontime6	33724.85928905	Sum of GTIs [s]
l2events	115391	Number of level 2 events



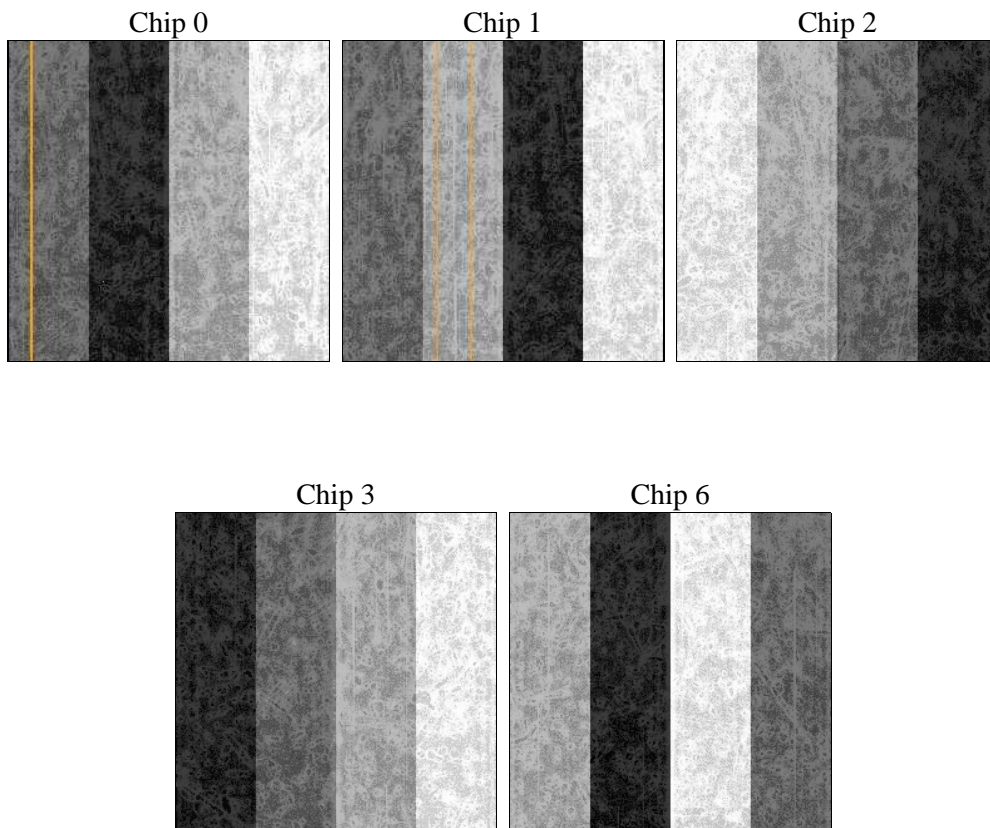
## 2 OBI

### 2.1 OBI

#### 2.1.1 Images



#### 2.1.2 Bias



### 2.1.3 Parameters

obi_num	0	Obi number	sched_exp_time	33560.000000	[s] Scheduled observation exposure time
ascdsver	8.4.4	Processing system revision	ontime	33718.577328444	Sum of GTIs [s]
caldsver	4.4.9	&#160	ontime0	33715.436358392	Sum of GTIs [s]
date	2012-05-17T03:12:38	Date and time of file creation	ontime1	33724.859299123	Sum of GTIs [s]
revision	2	Processing version of data	ontime2	33724.85928905	Sum of GTIs [s]
			ontime3	33718.577328444	Sum of GTIs [s]
			ontime6	33724.85928905	Sum of GTIs [s]
			l1events	1316020	Number of level 1 events

### 2.1.4 Events

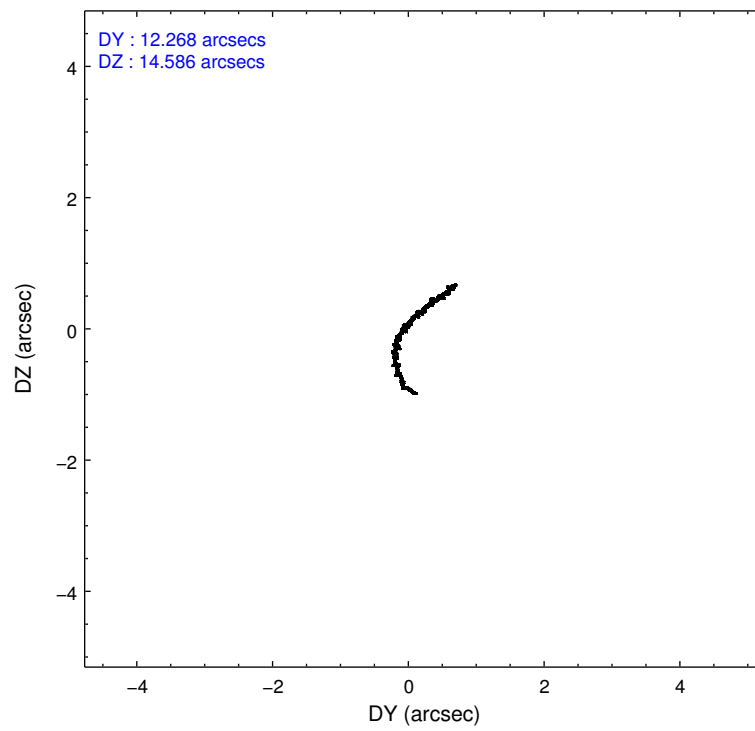
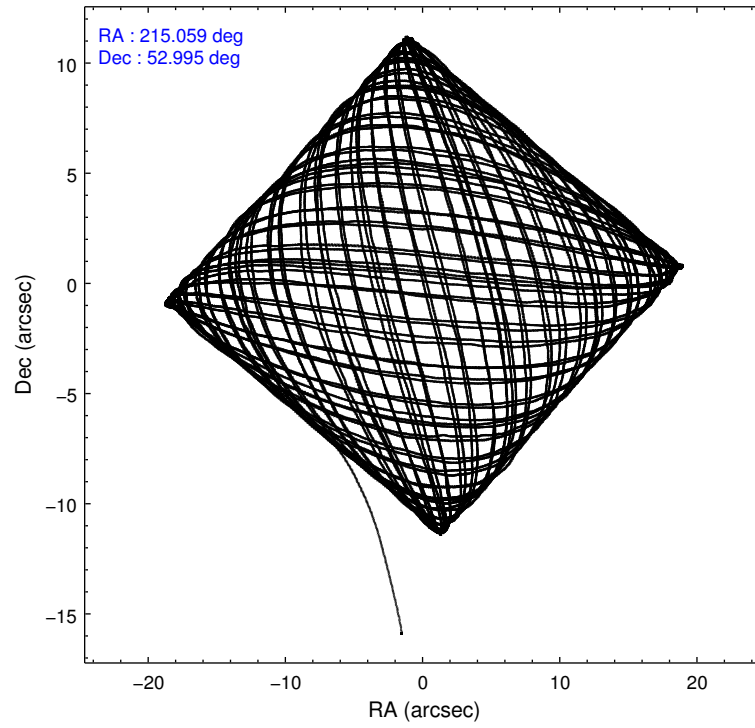
	ccd 0	ccd 1	ccd 2	ccd 3	ccd 6
level 1 events	246245	251724	282884	267323	267844
rejected events	218697	220863	256304	241260	240344
rejected %	88%	87%	90%	90%	89%

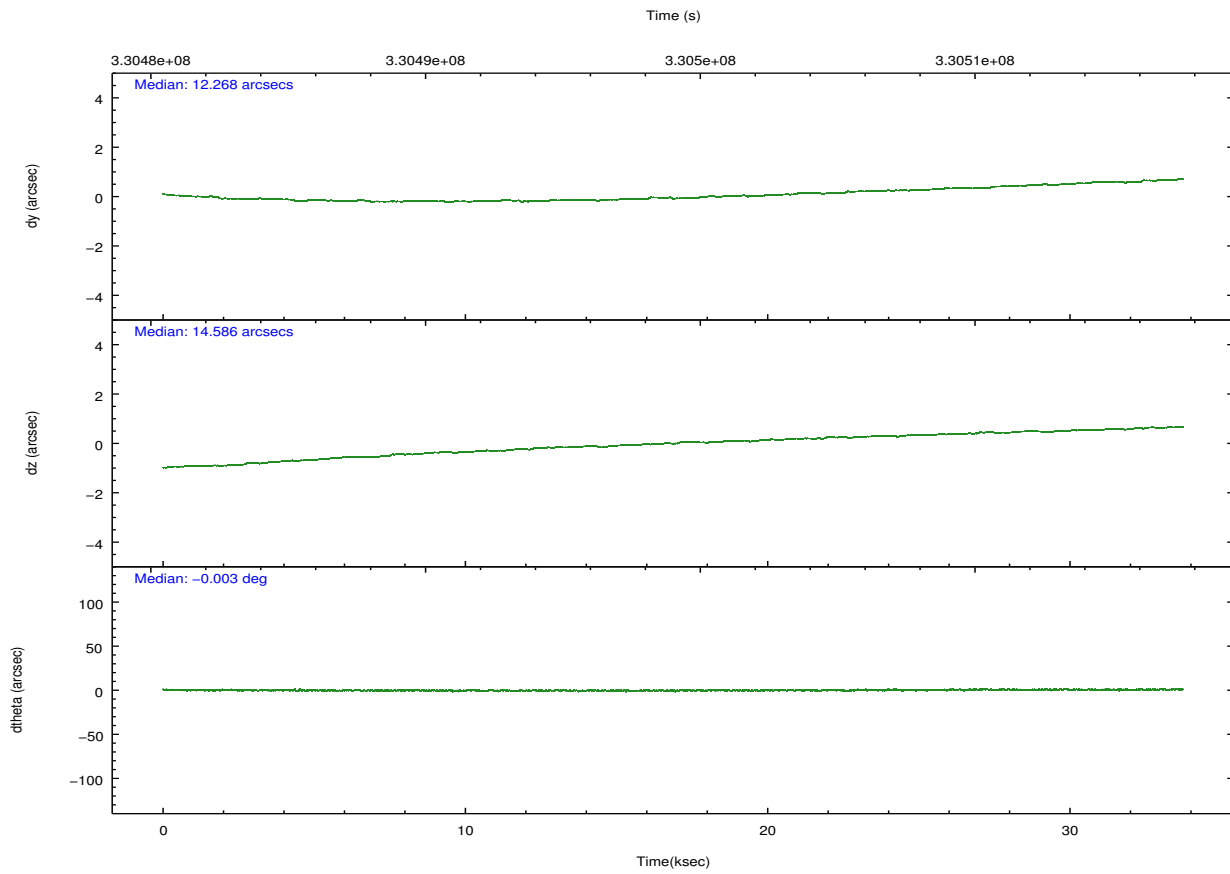
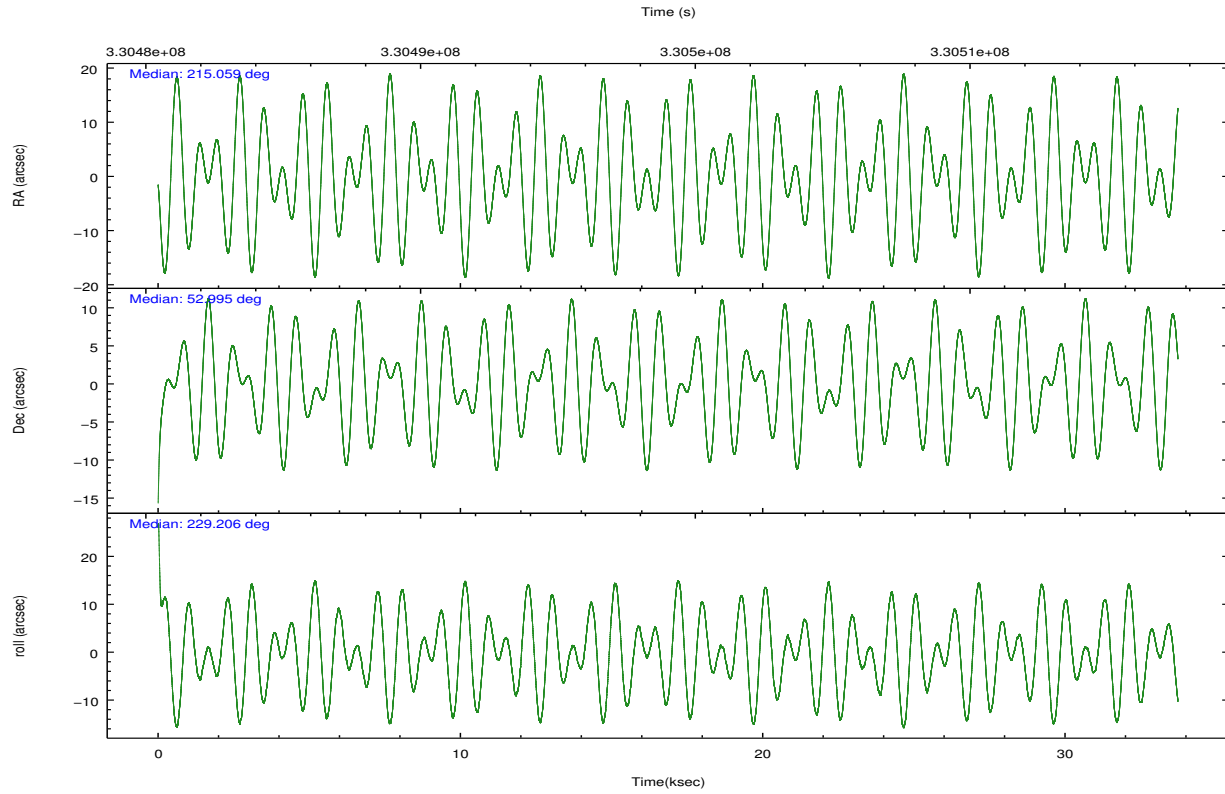
	ccd 0	ccd 1	ccd 2	ccd 3	ccd 6
grade 0 events	9721	11185	9439	9506	9576
	3%	4%	3%	3%	3%
grade 1 events	154	132	175	167	134
	0%	0%	0%	0%	0%
grade 2 events	6706	7084	6664	5654	5906
	2%	2%	2%	2%	2%
grade 3 events	3019	3210	2768	2880	3063
	1%	1%	0%	1%	1%
grade 4 events	2929	3246	2815	2899	2978
	1%	1%	0%	1%	1%
grade 5 events	9569	10915	9049	11358	10802
	3%	4%	3%	4%	4%
grade 6 events	5189	6149	4902	5136	5988
	2%	2%	1%	1%	2%
grade 7 events	208958	209803	247072	229723	229397
	84%	83%	87%	85%	85%

## 2.2 Compared Parameters

Parameter	Planned	Actual	Parameter	Planned	Actual
Instrument	ACIS	ACIS	Obspar format version number	7	7
Detector	ACIS-01236	ACIS-01236	Obspar file type	PREDICTED	ACTUAL
Grating	NONE	NONE	Obspar update status	NONE	UPDATED
Data mode	VFAINT	VFAINT	CCD I0 on	Y	Y
Observation mode	POINTING	POINTING	CCD I1 on	Y	Y
[deg] Pointing RA	215.067608	215.0592051180052	CCD I2 on	Y	Y
[deg] Pointing Dec	53.022319	52.9952848043057	CCD I3 on	Y	Y
[deg] Pointing Roll	228.997590	229.21299064466	CCD S0 on	N	N
[deg] Roll angle	50.000000	50.000000	CCD S1 on	N	N
[deg] Roll tolerance	10.000000	10.000000	CCD S2 on	O1	Y
Roll constraint allows 180D rotation	Y	Y	CCD S3 on	N	N
[mm] SIM focus pos	-0.782348	-0.7809083437167272	CCD S4 on	N	N
[mm] SIM defocus	0	0.001439871863259334	CCD S5 on	N	N
[mm] SIM translation stage pos	-233.592463	-233.5874344608287	Number of optional ACIS chips dropped	0	0
[mm] SIM translation stage offset	0	-0.005018542100998502	On-chip summing requested	N	N
[s] Observation start time (MET)	330482319.184000	330481323.96762	Subarray requested	NONE	NONE
Observation start date	2008-06-22T00:37:34	2008-06-22T00:22:03	Alternating exposures requested	N	N
[s] Observation end time (MET)	330515879.184000	330516452.76934	[s] Primary exposure time	0.000000	3.1
Observation end date	2008-06-22T09:56:54	2008-06-22T10:07:32			
Read mode	TIMED	TIMED			

## 2.3 Aspect



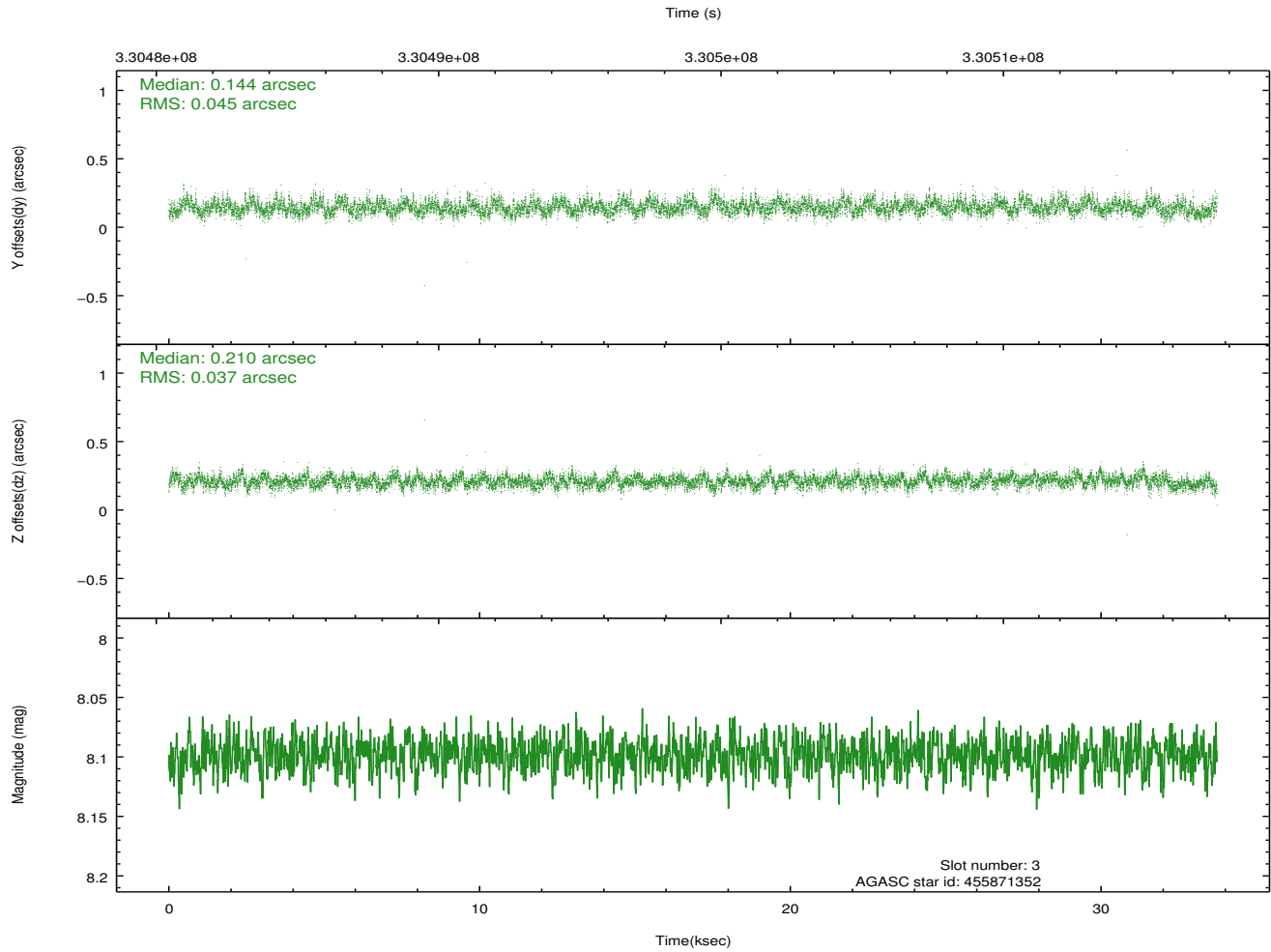
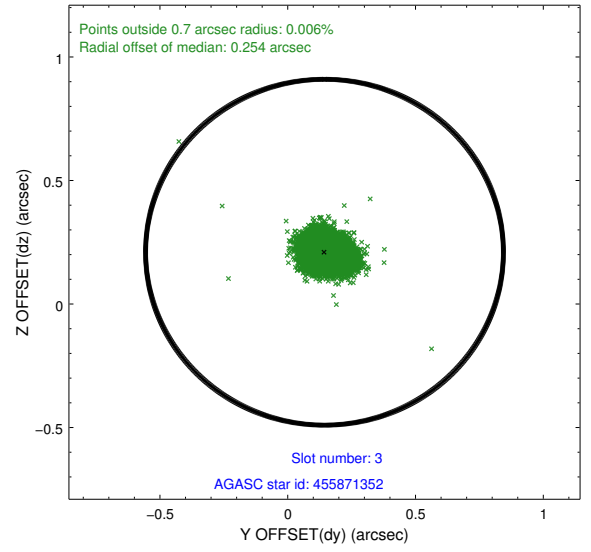
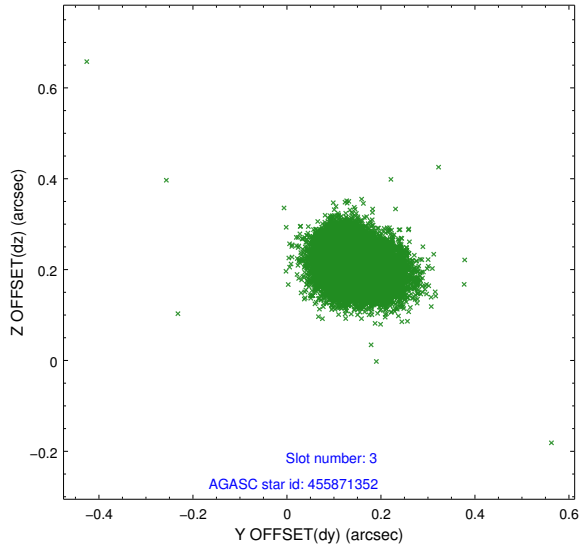


### Slot Statistics

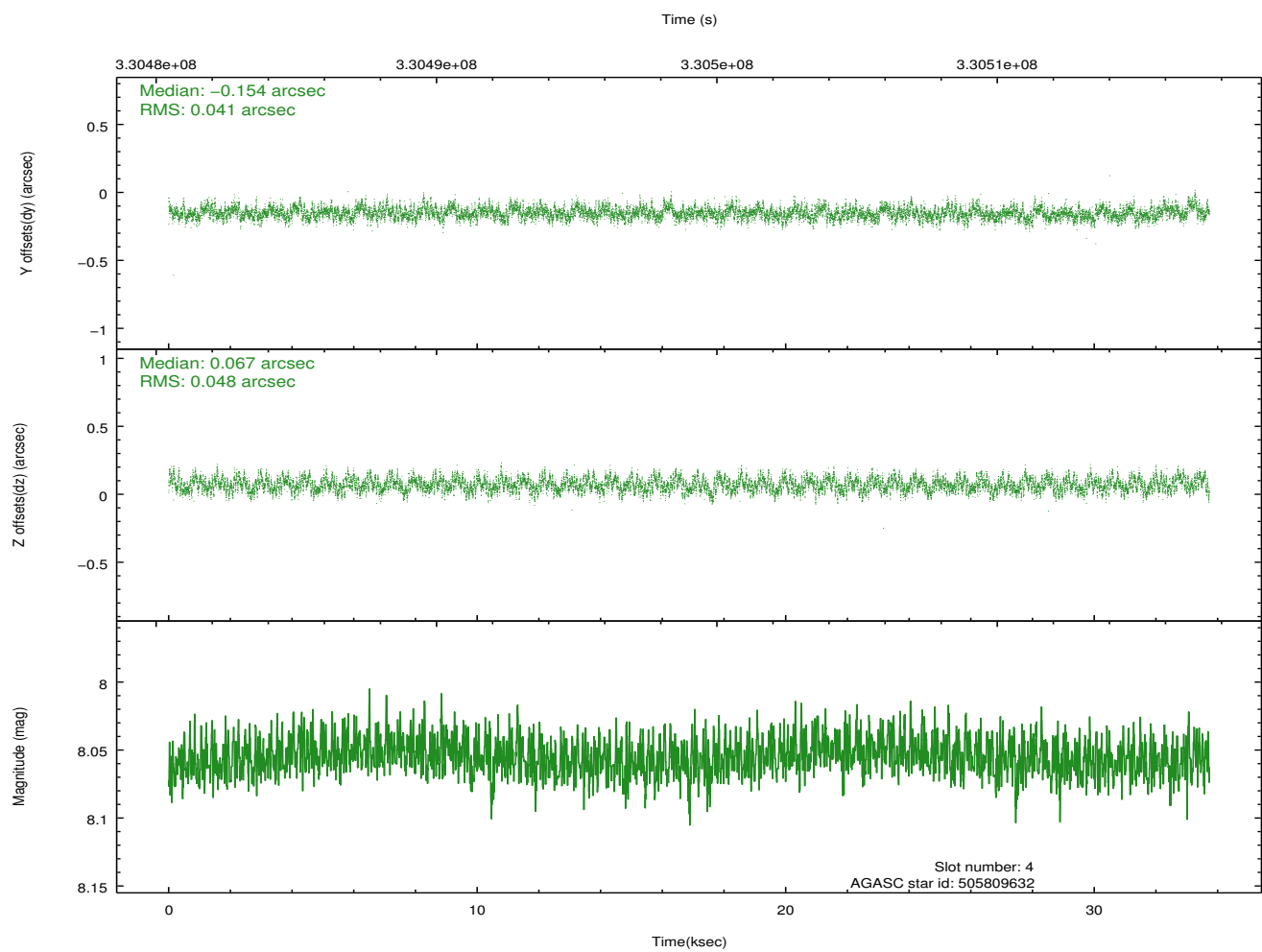
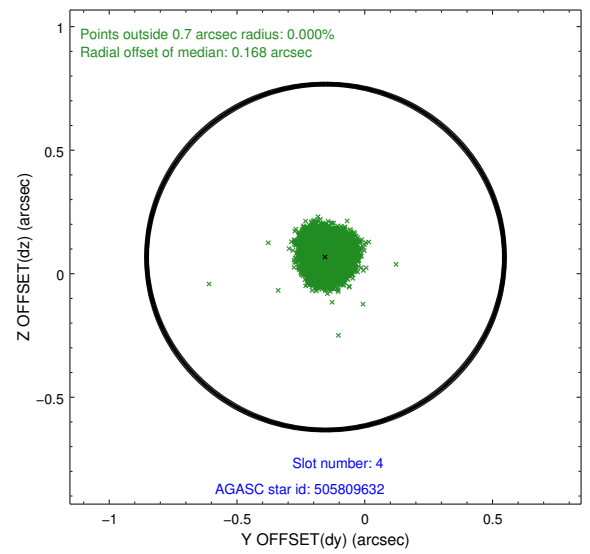
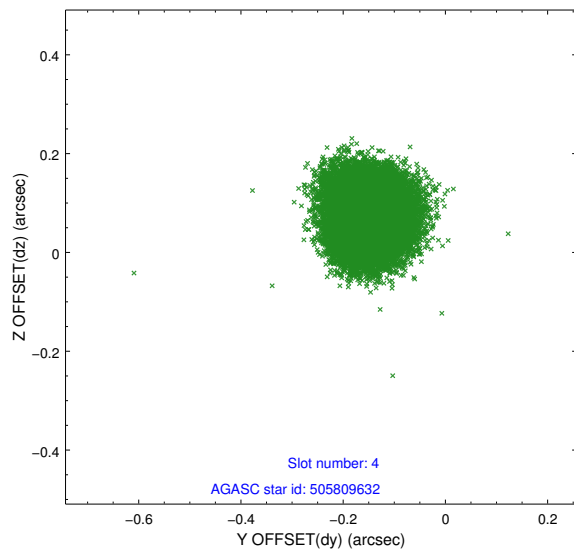
slot	status	id	mag	n_pts	med_dy	med_dz	dr1	dr2	ra	dec	mean_y	mean_z
0	FID	ACIS-I-1	7.04	8228	0.001	0.029	0.019	0.038	0.000000	0.000000	927.19	-838.08
1	FID	ACIS-I-5	7.03	8228	-0.162	0.023	0.013	0.026	0.000000	0.000000	-1821.08	1059.35
2	FID	ACIS-I-6	7.03	8228	0.071	0.022	0.020	0.029	0.000000	0.000000	392.72	1703.93
3	GUIDE	455871352	8.10	16449	0.144	0.210	0.061	0.100	215.099961	52.172669	2261.70	2061.49
4	GUIDE	505809632	8.06	16456	-0.154	0.067	0.068	0.107	215.499426	53.521185	-1963.55	-482.47
5	GUIDE	505812088	8.14	16453	0.082	-0.114	0.064	0.104	214.186617	53.263562	580.83	-2008.94
6	GUIDE	505812376	7.67	16392	0.080	-0.215	0.051	0.082	214.039537	52.937930	1681.14	-1494.40
7	GUIDE	505815928	8.31	16450	-0.156	0.050	0.060	0.097	216.234742	53.074559	-1813.59	1768.06

## 2.4 Star Slots

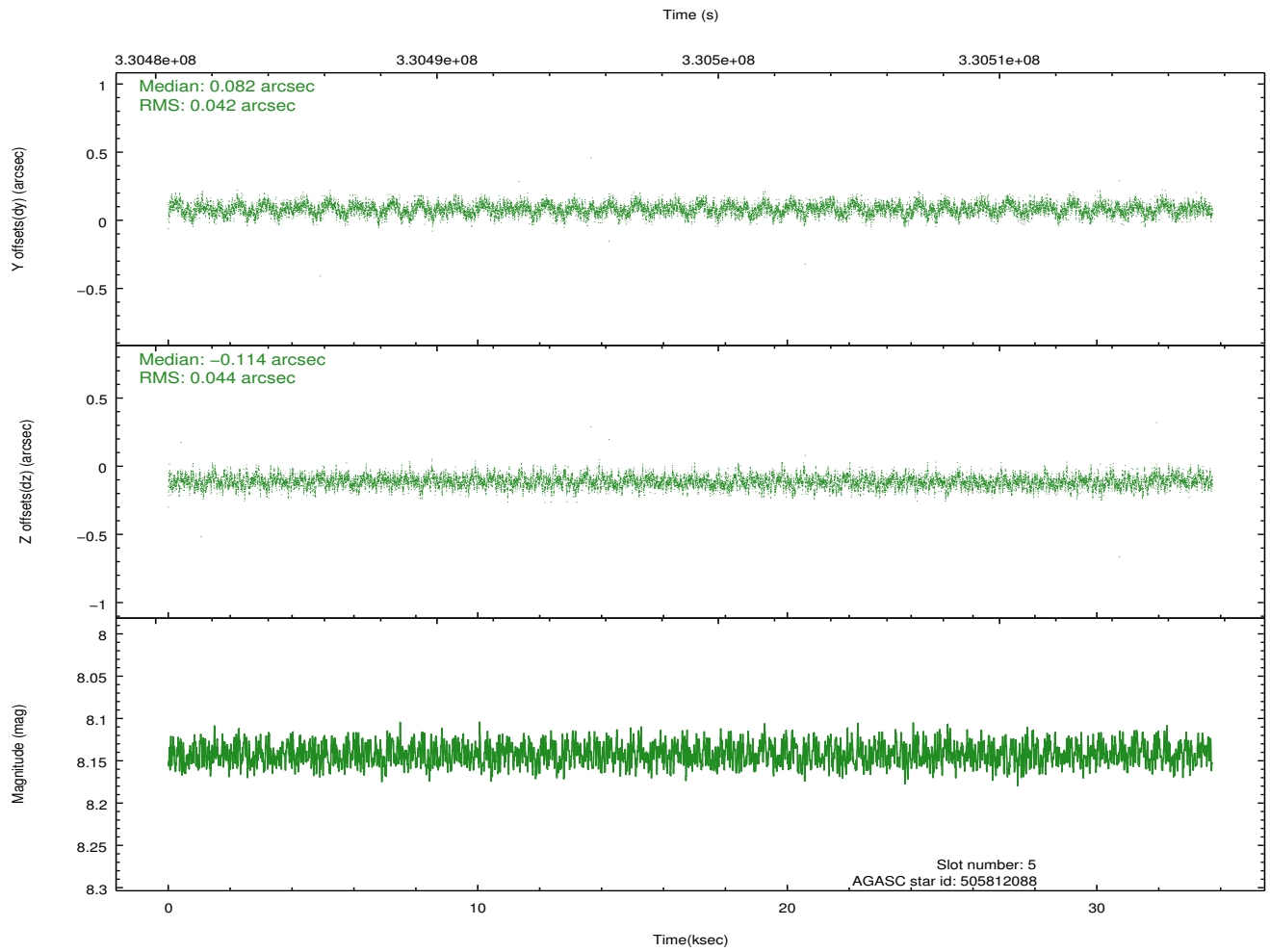
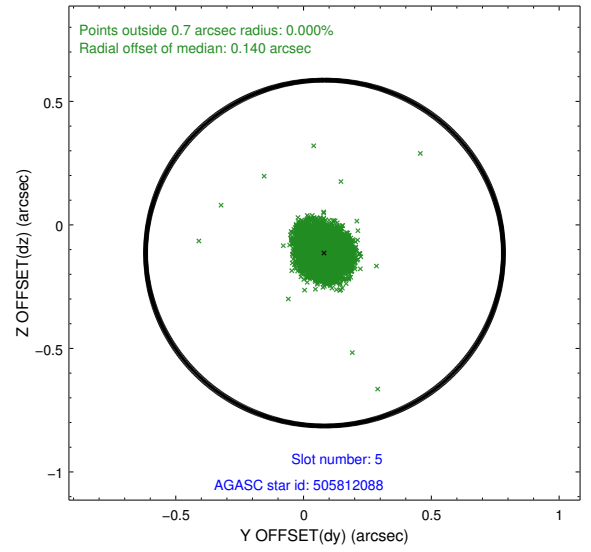
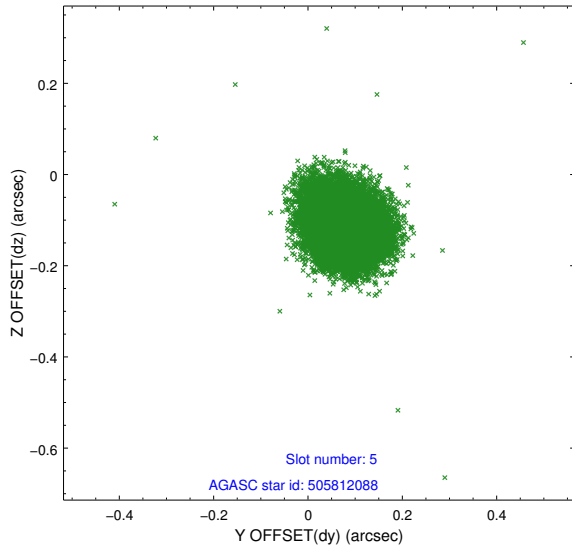
### 2.4.1 Slot 3



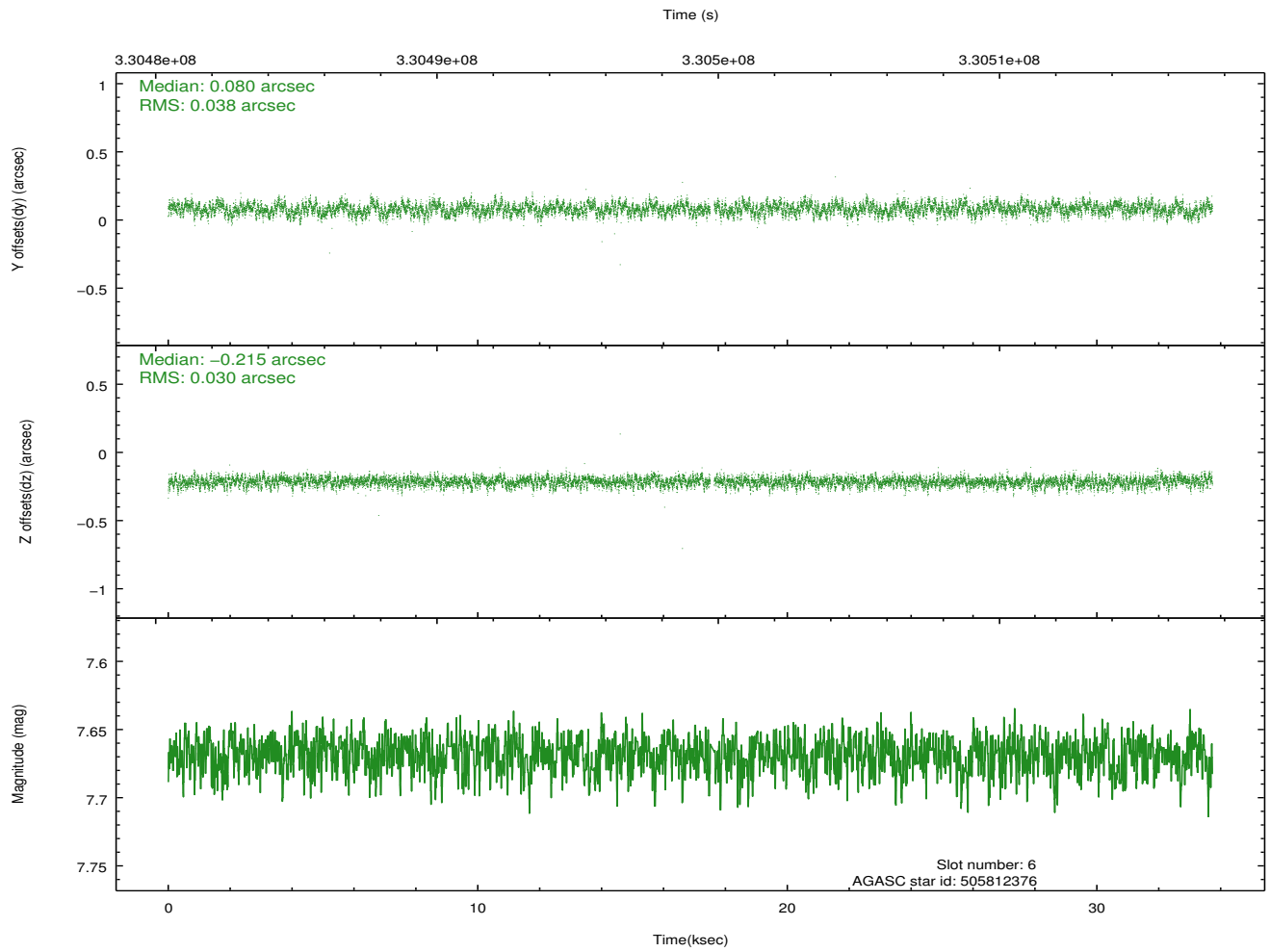
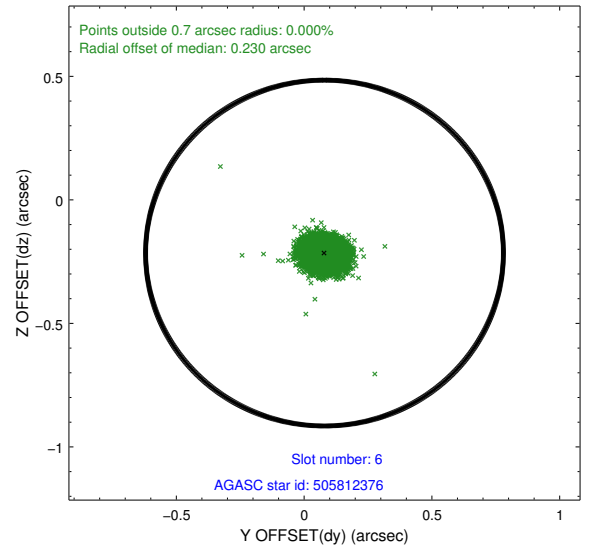
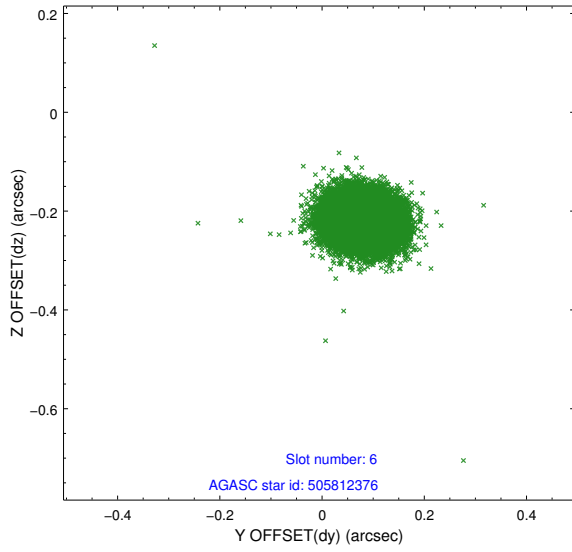
## 2.4.2 Slot 4



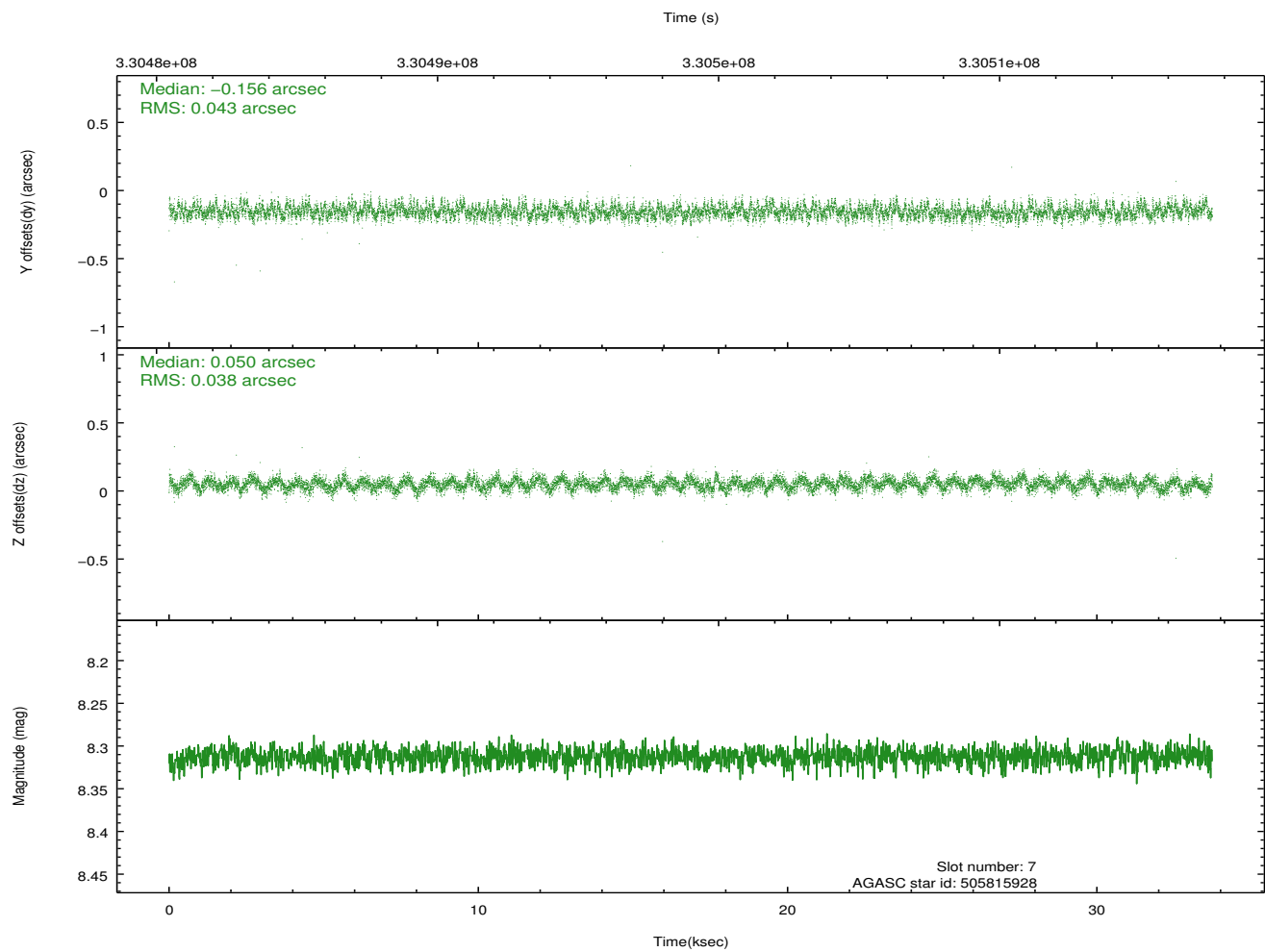
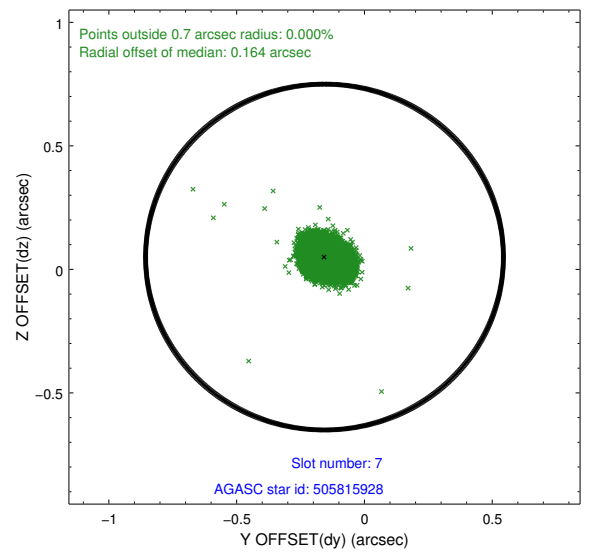
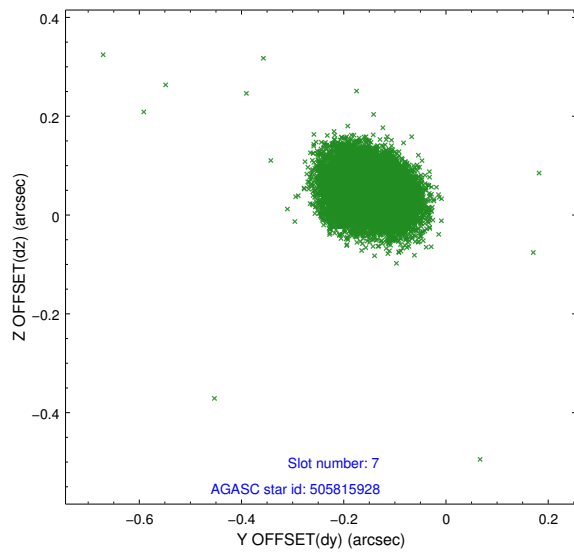
### 2.4.3 Slot 5



### 2.4.4 Slot 6

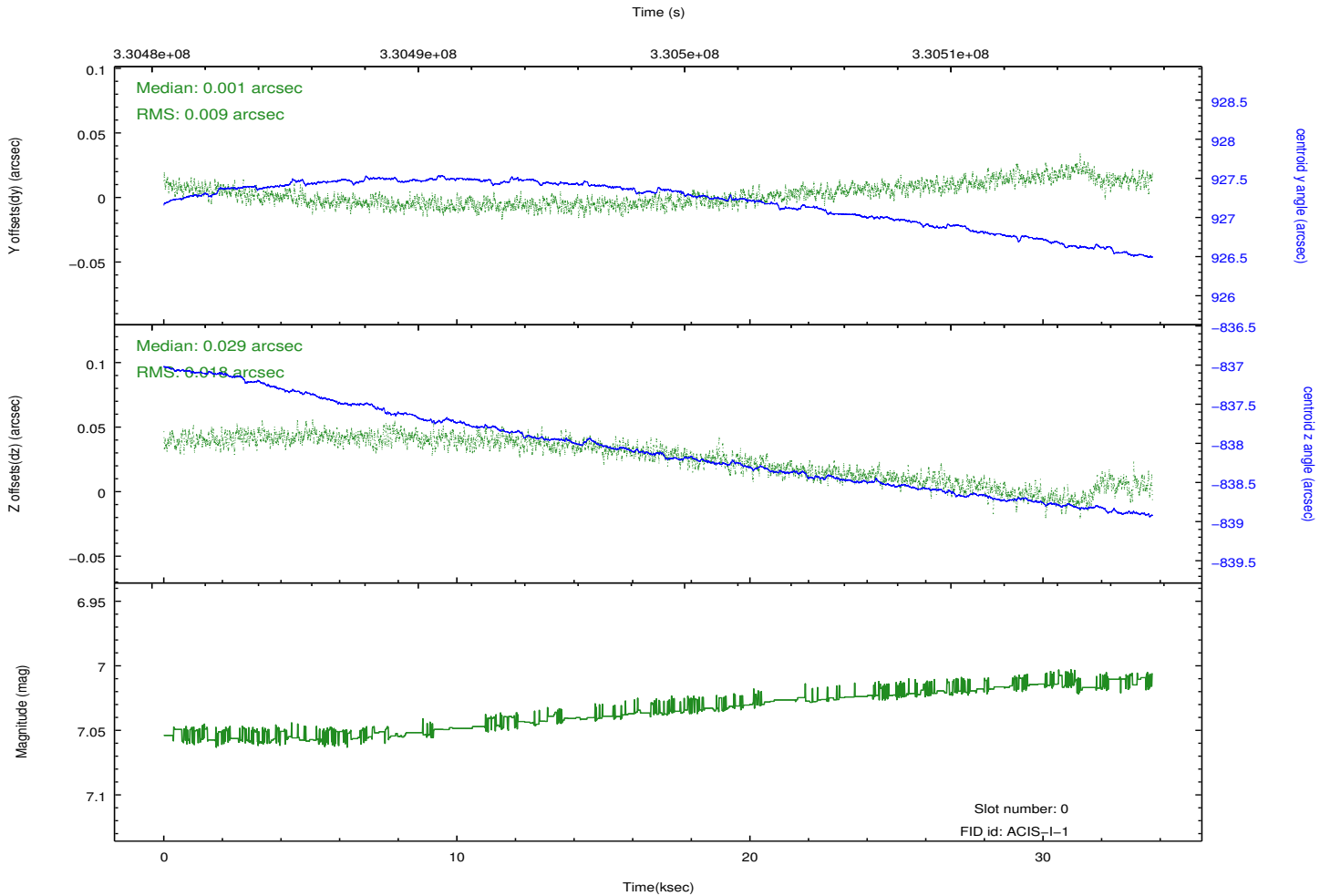
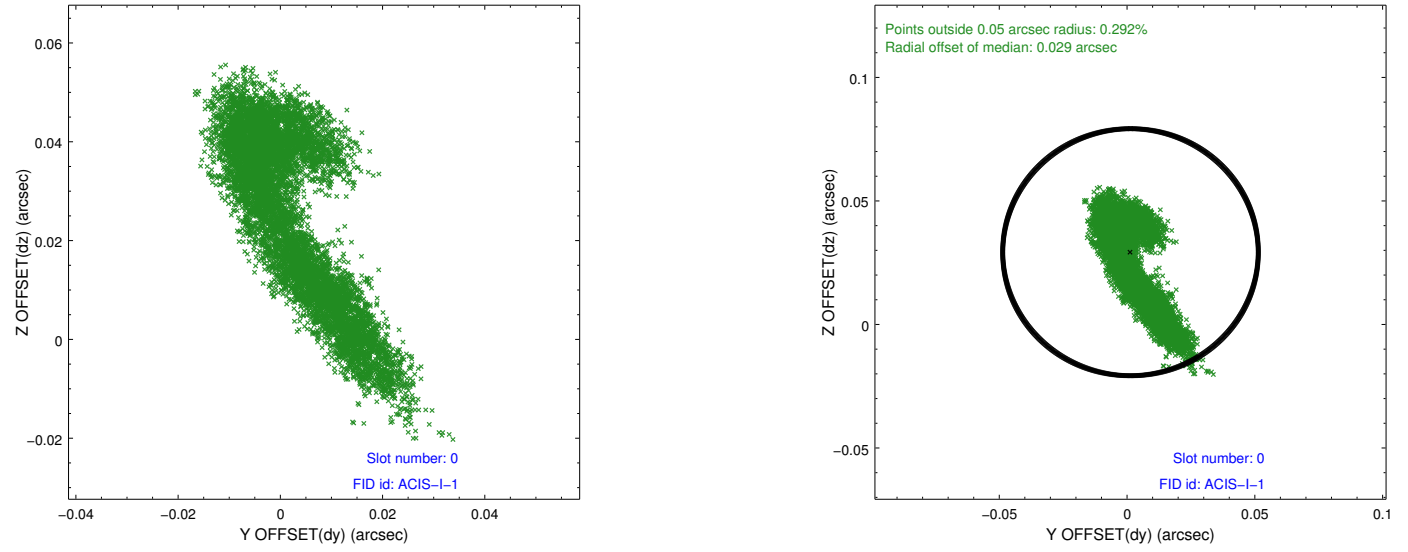


## 2.4.5 Slot 7

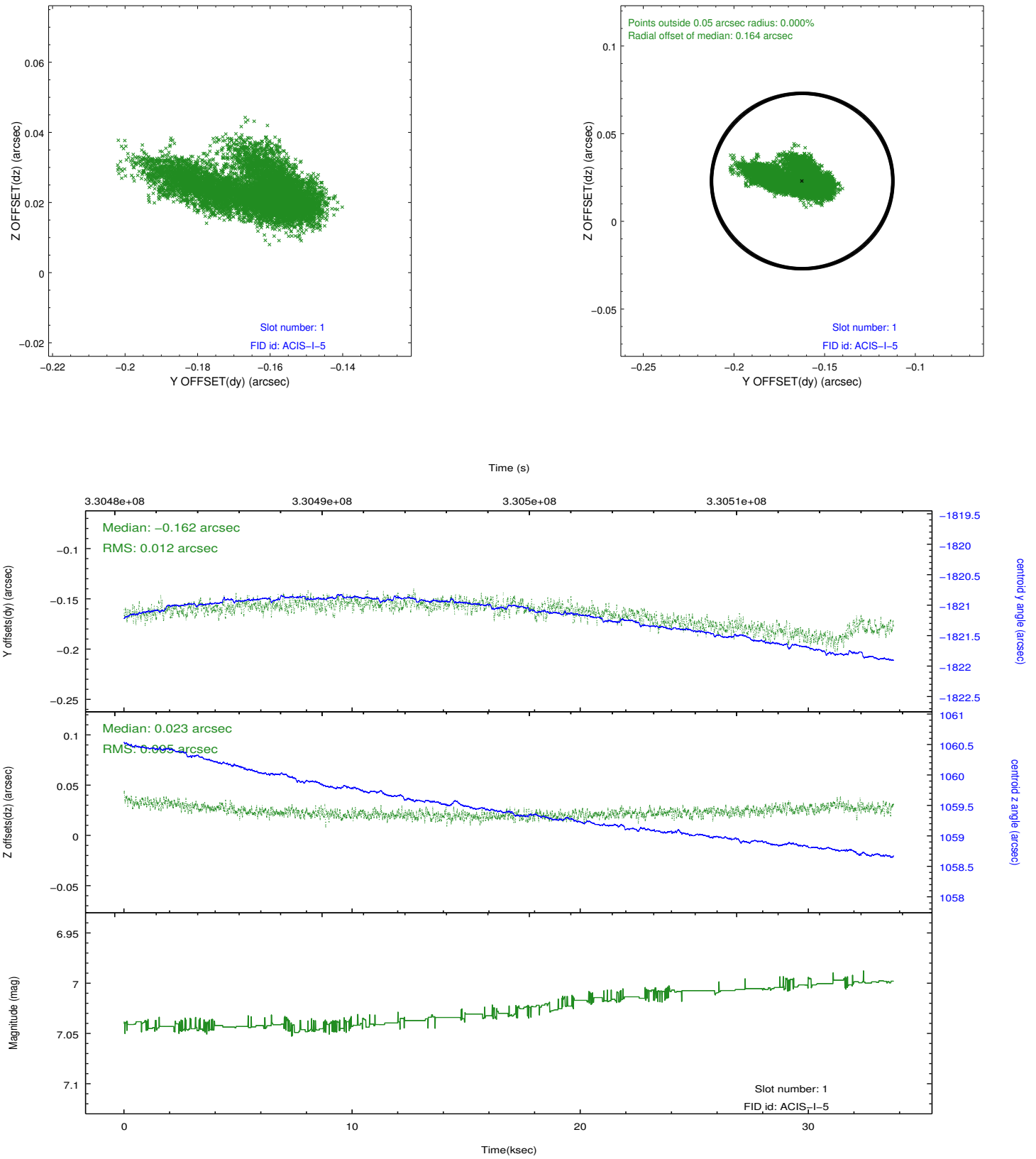


## 2.5 FID Slots

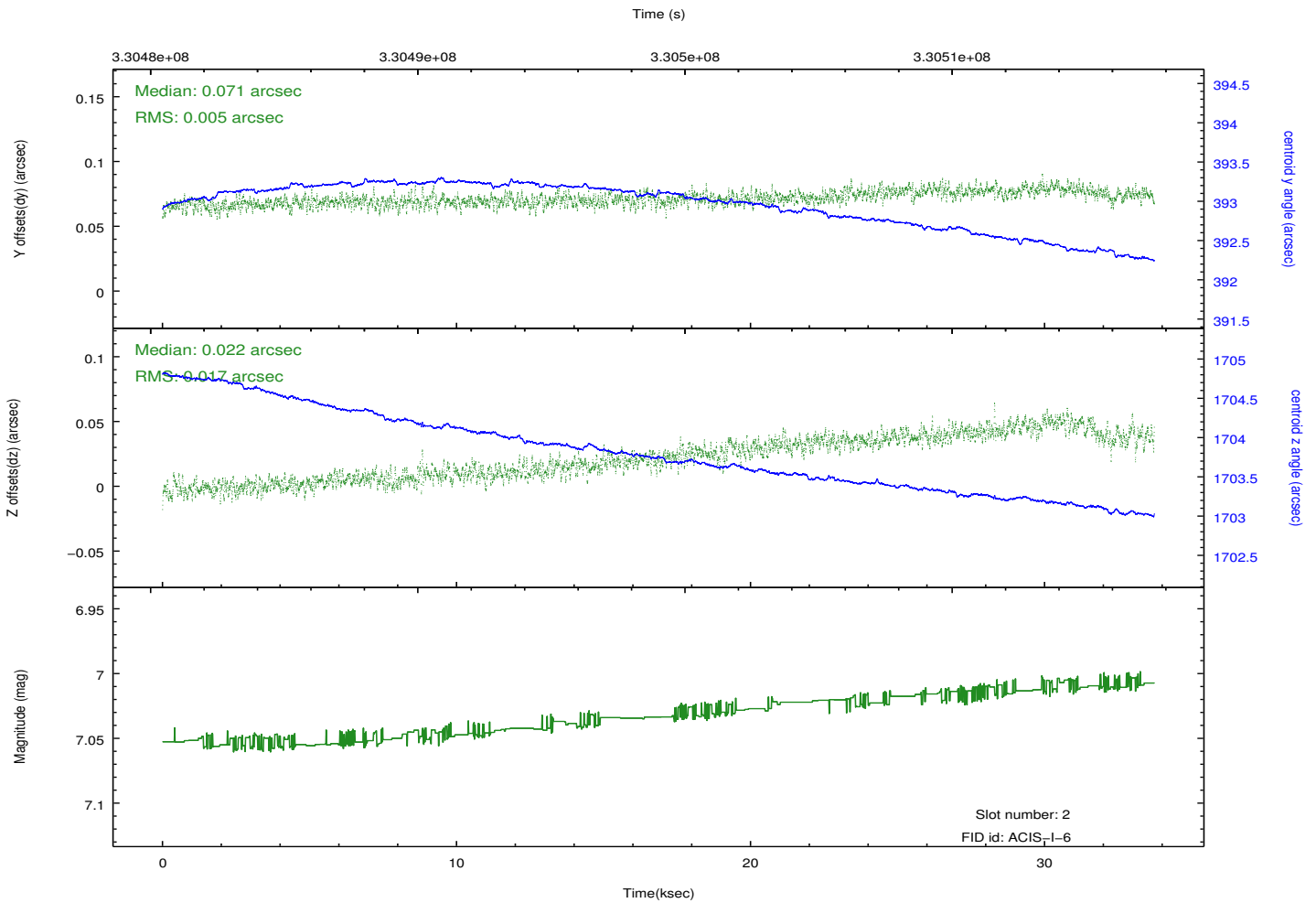
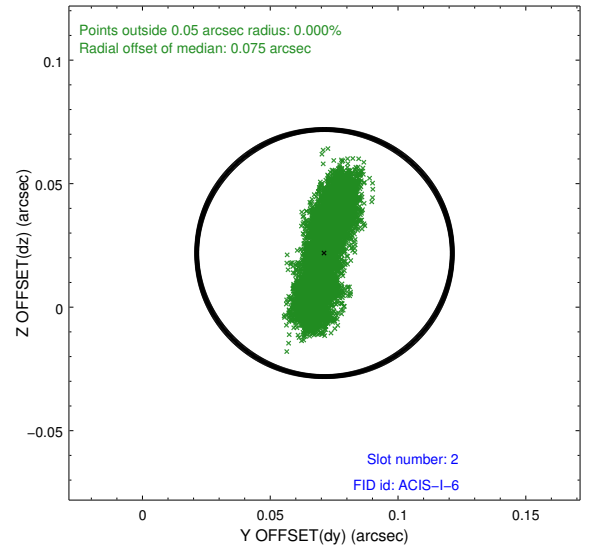
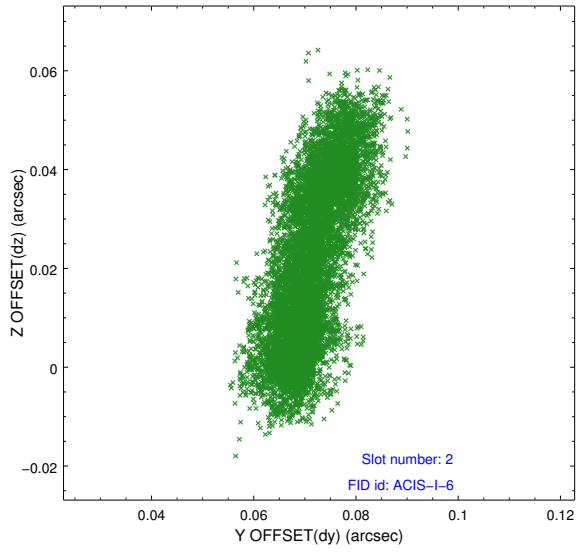
### 2.5.1 Slot 0



## 2.5.2 Slot 1



### 2.5.3 Slot 2



# A Summary

## A.1 Status

V&V Scientist	Beth Sundheim
V&V Date (YYYY-MM-DD)	2012.05.23
V&V Edition	1
V&V Disposition and Status	OK
V&V Charge Time	33.7185773

## A.2 Comments

Joint proposal with Spitzer.

Roll preference met.